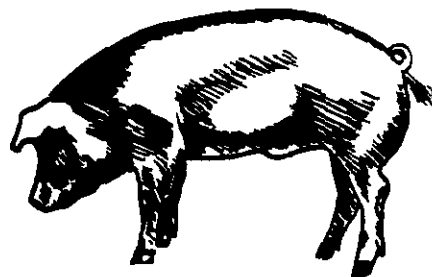


# HOGS AND PIGS

MARCH 1969 (10 Corn Belt States)

## In this issue:

- ★ Inventory
- ★ Sows Farrowing
- ★ Pig Crop



Release:  
March 21, 1969  
3:00 P.M. EST

## HOGS AND PIGS ON FARMS UP 4 PERCENT

Hogs and pigs on farms in the 10 Corn Belt States on March 1, 1969, were up 4 percent from a year earlier, according to the Crop Reporting Board. An estimated 41.3 million head were on farms March 1, 1969 compared with 39.8 million a year earlier. The 10 States included in this report are Ohio, Indiana, Illinois, Wisconsin, Minnesota, Iowa, Missouri, South Dakota, Nebraska and Kansas.

The December-February 1969 pig crop is estimated at 13,440,000, up 3 percent from the same period a year earlier. Sows farrowing during this period totaled 1,860,000 compared with 1,789,000 in the year earlier period.

Hog producers in the 10 States reported intentions to farrow 5 percent more sows during March-May 1969 and 6 percent more during June-August 1969 compared with the same periods a year earlier.

## MARCH 1 INVENTORY

More hogs and pigs were on farms March 1 in each of the 10 States except Illinois where the estimate is 2 percent less than March 1, 1968. Kansas was up 11 percent from a year earlier; South Dakota, 10 percent; Ohio and Nebraska, each up 7 percent; Missouri, 5 percent; Minnesota and Iowa, each, 4 percent; Indiana, 2 percent; and Wisconsin, 1 percent.

Market hogs in the 10 States were estimated at 33,815,000 head, an increase of 4 percent from a year earlier. By weight groups, the estimated number and changes from a year earlier are as follows: Under 60 pounds, 12,480,000, up 535,000; 60-119 pounds, 7,289,000, up 259,000; 120-179 pounds, 8,276,000, up 236,000; 180-219 pounds, 4,733,000, up 183,000; and 220 pounds and over 1,037,000, up 81,000. Hogs and pigs kept for breeding totaled 7,439,000, up 2 percent from March 1, 1968.

---

## DECEMBER-FEBRUARY PIG CROP

More sows farrowed during December-February this year in all of the 10 States, except Indiana and Wisconsin. Increases were largest in the Western Corn Belt States with Nebraska, Kansas and South Dakota showing increases of 8, 10, and 16 percent, respectively. Indiana farrowings were down 2 percent and Wisconsin was unchanged from last year. The average number of pigs per litter for this period is estimated at 7.23 compared with 7.28 a year earlier. Severe winter weather and disease problems were frequently mentioned by farmers as adversely affecting litter size, particularly in Central and Northwestern Corn Belt States.

## MARCH-MAY FARROWING INTENTIONS

Farmers in all States, except Wisconsin, South Dakota and Nebraska, reported intentions to farrow more sows in the March-May period than a year earlier. Increases ranged from 4 to 6 percent in Ohio, Indiana, Illinois, Minnesota, Missouri and Kansas. Iowa showed an 8 percent increase. South Dakota and Nebraska reported the same number as a year earlier while Wisconsin recorded a 3 percent decrease.

## JUNE-AUGUST FARROWING INTENTIONS

For the June-August quarter, only Wisconsin shows a decline in expected farrowings from a year earlier. Increases in other States range from 2 percent in Nebraska to 11 percent in Iowa.

\*\*\*\*\*

Hogs and Pigs: Number on farms, sows farrowing and pig crop,  
selected States, 1967-69

Item	1967	1968	1969	1969 as percent of 1968
	- - - <u>1,000 head</u> - - -			<u>Percent</u>
<u>Number on Farms-March 1:</u>				
All hogs and pigs .....	38,855	39,786	41,254	104
Kept for breeding .....	7,273	7,265	7,439	102
Market .....	31,582	32,521	33,815	104
<u>Market hogs and pigs</u>				
<u>by weight groups</u>				
Under 60 pounds .....	11,647	11,945	12,480	104
60-119 pounds .....	6,762	7,030	7,289	104
120-179 pounds .....	7,739	8,040	8,276	103
180-219 pounds .....	4,479	4,550	4,733	104
220 pounds and over .....	955	956	1,037	108
<u>Sows farrowing</u>				
December 1/-February .....	1,745	1,789	1,860	104
March-May .....	3,330	3,358	<sup>2</sup> /3,520	105
June-August .....	2,258	2,387	<sup>2</sup> /2,541	106
September-November .....	2,234	2,337		
<u>Pig crop</u>				
December 1/-February .....	12,770	13,024	13,440	103
March-May .....	24,544	25,138		
June-August .....	16,666	17,648		
September-November .....	16,542	17,214		
<u>Pigs per litter</u>				
December 1/-February .....	7.32	7.28	7.23	99
March-May .....	7.37	7.49		
June-August .....	7.38	7.39		
September-November .....	7.40	7.37		

1/ December preceding year.

2/ Intentions.

Hogs and Pigs: Number on farms, breeding, market, and total,  
December 1, 1967 and 1968, selected States

State	Breeding			Market			Total		
	1968			1968			1968		
	1967	Number	As % of 1967	1967	Number	As % of 1967	1967	Number	As % of 1967
	1,000 head	Percent		1,000 head	Percent		1,000 head	Percent	
Ohio	345	362	105	2,212	2,221	100	2,557	2,583	101
Indiana	638	621	97	3,730	3,878	104	4,368	4,499	103
Illinois	1,117	1,188	106	6,090	6,235	102	7,207	7,423	103
Wisconsin	336	318	95	1,432	1,450	101	1,768	1,768	100
Minnesota	522	564	108	2,622	2,894	110	3,144	3,458	110
Iowa	2,340	2,536	108	12,757	13,316	104	15,097	15,852	105
Missouri	686	707	103	3,743	3,855	103	4,429	4,562	103
S. Dakota	334	335	100	1,472	1,525	104	1,806	1,860	103
Nebraska	487	507	104	2,556	2,871	112	3,043	3,378	111
Kansas	252	265	105	1,326	1,502	113	1,578	1,767	112
Total 10 States	7,057	7,403	105	37,940	39,747	105	44,997	47,150	105
Hawaii	10	10	100	58	54	93	68	64	94

Market Hogs and Pigs: Number on farms, by weight groups,  
December 1, 1967 and 1968, selected States

State	Under 60 lbs.		60-119 lbs.		120-179 lbs.		180-219 lbs.		220 lbs. and over	
	1967	1968	1967	1968	1967	1968	1967	1968	1967	1968
	--- 1,000 head ---									
Ohio	867	866	664	666	409	422	232	222	40	45
Indiana	1,194	1,210	1,100	1,140	858	1,008	477	434	101	86
Illinois	2,058	2,151	1,772	1,808	1,267	1,278	810	811	183	187
Wisconsin	587	551	301	377	308	305	193	181	43	36
Minnesota	933	984	787	894	498	564	325	356	79	96
Iowa	4,210	4,461	3,342	3,462	2,615	2,863	1,952	1,931	638	599
Missouri	1,497	1,465	898	1,041	749	752	412	424	187	173
S. Dakota	530	549	353	374	280	290	221	221	88	91
Nebraska	982	1,120	700	735	468	519	299	356	107	141
Kansas	530	616	345	368	252	293	146	165	53	60
Total 10 States	13,388	13,973	10,262	10,865	7,704	8,294	5,067	5,101	1,519	1,514
Hawaii	28	24	18	17	11	10	1	2	---	1

Hogs and Pigs: Number on farms, breeding, market, and total,  
March 1, 1968 and 1969, selected States

State	Breeding			Market			Total		
	1969			1969			1969		
	1968	Number	As % of 1968	1968	Number	As % of 1968	1968	Number	As % of 1968
	1,000 head	Percent		1,000 head	Percent		1,000 head	Percent	
Ohio	363	376	104	1,981	2,132	108	2,344	2,508	107
Indiana	662	675	102	3,473	3,543	102	4,135	4,218	102
Illinois	1,105	1,115	101	5,396	5,256	97	6,501	6,371	98
Wisconsin	332	321	97	1,111	1,136	102	1,443	1,457	101
Minnesota	524	536	102	2,263	2,362	104	2,787	2,898	104
Iowa	2,414	2,511	104	10,293	10,704	104	12,707	13,215	104
Missouri	703	738	105	3,203	3,363	105	3,906	4,101	105
S. Dakota	356	359	101	1,126	1,271	113	1,482	1,630	110
Nebraska	561	553	99	2,390	2,605	109	2,951	3,158	107
Kansas	245	255	104	1,285	1,443	112	1,530	1,698	111
Total 10 States	7,265	7,439	102	32,521	33,815	104	39,786	41,254	104
Hawaii	10	10	100	57	51	89	67	61	91

Market Hogs and Pigs: Number on farms, by weight groups,  
March 1, 1968 and 1969, selected States

State	Under	60-119		120-179		180-219		220 lbs. and over		
	60 lbs.	lbs.		lbs.		lbs.		and over		
	1968	1969	1968	1969	1968	1969	1968	1969	1968	1969
	1,000 head									
Ohio	772	789	446	501	475	522	248	277	40	43
Indiana	1,406	1,453	785	779	747	772	462	461	73	78
Illinois	1,851	1,850	1,187	1,183	1,408	1,340	810	736	140	147
Wisconsin	475	471	219	231	239	251	156	159	22	24
Minnesota	928	944	430	449	475	520	362	378	68	71
Iowa	3,531	3,714	2,131	2,172	2,779	2,837	1,492	1,606	360	375
Missouri	1,217	1,312	769	790	736	757	359	370	122	134
S. Dakota	417	445	231	280	281	337	158	165	39	44
Nebraska	860	925	549	586	598	651	323	365	60	78
Kansas	488	577	283	318	302	289	180	216	32	43
Total 10 States	11,945	12,480	7,030	7,289	8,040	8,276	4,550	4,733	956	1,037
Hawaii	27	23	18	17	11	10	1	1	---	---

Farrowings: Number of sows, pigs per litter and pig crop,  
December 1/ - February 1967-69, selected States

State	Sows farrowing				Pigs per litter		Pig crop 2/		
	1967	1968	1969		1968	1969	1968	1969	
			Number	As % of 1968				Number	As % of 1968
	1,000 head		Percent		Number		1,000 head		Percent
Ohio .....	116	115	117	102	7.10	7.30	816	854	105
Indiana .....	219	219	215	98	7.26	7.58	1,590	1,630	103
Illinois .....	307	307	313	102	7.05	6.80	2,164	2,128	98
Wisconsin ....	83	80	80	100	7.79	7.62	623	610	98
Minnesota ....	136	141	147	104	7.78	7.42	1,097	1,091	99
Iowa .....	462	480	509	106	7.25	7.05	3,480	3,588	103
Missouri .....	186	190	196	103	7.08	7.33	1,345	1,437	107
South Dakota :	50	58	67	116	7.60	7.33	441	491	111
Nebraska .....	116	125	135	108	7.45	7.30	931	986	106
Kansas .....	70	74	81	110	7.26	7.71	537	625	116
Total 10 States .....	1,745	1,789	1,860	104	7.28	7.23	13,024	13,440	103
Hawaii .....	2.9	3.0	2.7	89	6.65	6.89	20	19	95

1/ December preceding year.

2/ Number of pigs born December through February that were on hand March 1 or had been sold.

Farrowings: Number of sows, pigs per litter and pig crop,  
March-May 1967-69, selected States

State	Sows farrowing				Pigs per litter		Pig crop 2/	
	1967	1968	1969 1/		1968	1968	1968	
			Number	As % of 1968			Number	1,000 head
	1,000 head		Percent		Number		1,000 head	
Ohio .....	155	146	155	106	7.59	1,108		
Indiana .....	235	235	249	106	7.53	1,770		
Illinois .....	508	508	528	104	7.19	3,653		
Wisconsin ....	149	149	145	97	7.74	1,153		
Minnesota ....	268	279	293	105	7.58	2,115		
Iowa .....	1,179	1,155	1,247	108	7.52	8,686		
Missouri .....	293	299	311	104	7.54	2,254		
South Dakota :	200	206	206	100	7.50	1,545		
Nebraska .....	245	277	277	100	7.39	2,047		
Kansas .....	98	104	109	105	7.76	807		
Total 10 States .....	3,330	3,358	3,520	105	7.49	25,138		
Hawaii .....	2.8	3.0	2.9	97	6.66	20		

1/ Intentions.

2/ Number of pigs born March through May that were on hand June 1 or had been sold.

Farrowings: Number of sows, pigs per litter and pig crop, June-August 1967-69, selected States

State	Sows farrowing				Pigs per litter	Pig crop
	1967	1968	1969	As % of 1968		
	1,000 head		Percent	Number	1,000 head	
Ohio .....	142	142	148	104	7.53	1,069
Indiana .....	254	262	275	105	7.21	1,889
Illinois .....	417	434	447	103	7.16	3,107
Wisconsin .....	108	108	107	99	7.86	849
Minnesota .....	178	190	209	110	7.56	1,436
Iowa .....	665	718	797	111	7.46	5,356
Missouri .....	235	249	256	103	7.27	1,810
South Dakota ...	64	68	75	110	7.23	492
Nebraska .....	122	139	142	102	7.54	1,048
Kansas .....	73	77	85	110	7.69	592
Total 10 States .....	2,258	2,387	2,541	106	7.39	17,648
Hawaii .....	2.9	3.0	2.9	97	7.40	22

1/ Intentions.

2/ Number of pigs born June through August that were on hand September 1 or had been sold.

Hogs and Pigs: Number on farms, pig crop, inshipments, death loss and marketings, December 1 1/- March 1, 1968 and 1969, 10 States

Item	1968	1969
	1,000 head	
Hogs and Pigs on hand December 1 1/ .....	44,997	47,150
Pig Crop Dec. 1/-Feb. ....	13,024	13,449
Inshipments 2/ Dec. 1/-Feb. ....	232	219
Slaughter 3/ Dec. 1/-Feb. ....	17,413	18,419
Death Loss Dec. 1/-Feb. ....	1,054	1,136
Hogs and Pigs on hand March 1 .....	39,786	41,254

1/ December preceding year.

2/ Includes only those shipped in from States outside the 10 States.

3/ Includes farm slaughter, and feeder pig outshipments to States other than the 10 States.

---

UNITED STATES DEPARTMENT OF AGRICULTURE  
STATISTICAL REPORTING SERVICE  
WASHINGTON, D. C. 20250

POSTAGE AND FEES PAID  
U. S. DEPARTMENT OF AGRICULTURE

OFFICIAL BUSINESS