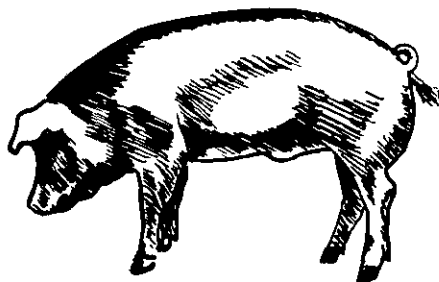


HOGS AND PIGS

JUNE 1969 (U.S. and 10 Corn Belt States)



In this issue:

- ★ June 1 Inventory
- ★ Sows Farrowing
- ★ Pig Crop

Release:
June 24, 1969
3:00 P.M. EDT

HOGS AND PIGS ON FARMS DOWN 2 PERCENT

Hogs and pigs on U.S. farms on June 1, 1969 are estimated at 59.3 million head -- a 2-percent decrease from a year earlier, according to the Crop Reporting Board. Breeder hogs are estimated at 9.4 million, up 1 percent from a year earlier, but market hogs, at 49.9 million, are down 3 percent.

The December-May 1969 pig crop is estimated at 47.2 million head, 4 percent below the same period in 1968. A total of 6.4 million sows farrowed December-May 1969, 4 percent less than a year earlier. Average pig litter was 7.35 compared with 7.37 last year.

Hog producers intend to farrow 6.4 million sows during June-November 1969, 3 percent more than the year earlier period. If intended farrowings are realized and pigs per litter equal the average, allowing for trend, the June-November pig crop will be 47.1 million head, 4 percent more than last year. The 1969 pig crop (December 1968 through November 1969) would then be 94.3 million head, nearly the same as 1968.

HOGS AND PIGS ON FARMS JUNE 1, 1969

The number of hogs and pigs on farms June 1 is estimated at 59,257,000 head -- down 2 percent from a year earlier. Breeding hogs totaled 9,368,000, an increase of 1 percent from 1968. Hogs and pigs for market totaled 49,889,000, down 3 percent from a year earlier.

By weight group, market hogs and pigs on hand June 1, 1969 and the percentage changes from the previous year are: under 60 pounds, 24,206,000 head, down 7 percent; 60-119 pounds, 12,096,000 head, up 1 percent; 120-179 pounds, 7,833,000 head, virtually unchanged; 180 to 219 pounds, 4,367,000, up 4 percent and 220 pounds and over, 1,387,000, down 5 percent.

UNITED STATES DEPARTMENT OF AGRICULTURE

Statistical Reporting Service
MtAn 4 (6-69)

Crop Reporting Board
Washington, D. C. 20250

Hog numbers decreased 4 percent in the North Central States, and 2 percent in the South Central. Numbers in the North and South Atlantic each increased 7 percent, and the West 3 percent.

In the 10 Corn Belt States -- Ohio, Indiana, Illinois, Wisconsin, Minnesota, Iowa, Missouri, South Dakota, Nebraska and Kansas -- the June 1 number of hogs and pigs is estimated at 45,026,000 head, down 4 percent from a year earlier. These 10 States accounted for 76 percent of the Nation's total hog and pig inventory. Iowa, with nearly one-fourth of the total hog inventory, had 5 percent less hogs than a year earlier.

Market hogs and pigs in the 10 States totaled 37,962,000, down 4 percent from a year earlier, but breeding hogs at 7,064,000 head, were up 1 percent.

U.S. DECEMBER-MAY PIG CROP DOWN 4 PERCENT

The December-May 1969 pig crop is estimated at 47,152,000 head, a 4-percent decrease from a year earlier. The West North Central Region at 7 percent accounted for much of the decline, followed by the East North Central at 5 percent. The South Central was unchanged, but other regions were higher than a year earlier.

Sows farrowing totaled 6,411,000 head during December-May 1969, down 4 percent from a year earlier. Farrowings were down 6 percent in the West North Central Region, 5 percent in the South Central, and 4 percent in the East North Central. These decreases more than offset larger farrowings in both the North and South Atlantic Regions and the West.

Average litter size during December-May 1969 was 7.35 pigs, compared with 7.37 for this period a year ago.

The December-February 1969 pig crop in the 10 Corn Belt States totaled 13,220,000 head, an increase of 2 percent from a year earlier. Sows farrowing during the quarter totaled 1,829,000 head.

The March-May 1969 pig crop in the 10 Corn Belt States totaled 22,480,000 head, down 11 percent from the same period of 1968. Severe cold, snow and mud during winter hampered care and feeding in nearly all of the Corn Belt. Apparently many gilts that were reported on March 1 to farrow during March-May did not breed or were sold before farrowing. Actual March-May farrowings, at 3,046,000 sows, were down sharply from indicated March 1 intentions.

JUNE-NOVEMBER INTENTIONS UP 3 PERCENT

The Nation's hog producers reported intentions to farrow 6,362,000 sows during the June-November 1969 period, up 3 percent from a year earlier. Farrowing intentions are up except in the South Central Region which was down 3 percent. Increases ranged from 2 percent in the East North Central States to 9 percent in the South Atlantic and Western States.

Realization of the June-November sow farrowings and average pigs per litter plus an allowance for trend would indicate a pig crop of 47,100,000 head, 4 percent above a year earlier.

Farrowing intentions in the 10 Corn Belt States during June-August 1969 are expected to total 2,501,000 head, 5 percent more than a year earlier. Farrowings are expected to be below a year earlier in Illinois, the same in Indiana and indicated increases in other States, ranging from 4 percent in Iowa to 15 percent in Nebraska.


Indicated intentions at 2,381,000 sows to farrow during the September-November 1969 quarter in the 10 States were 2 percent above last year. Decreases are expected in Illinois and Minnesota. No change is indicated for Missouri, but other States indicate increases ranging from 1 to 10 percent.

* * * * *

CROP REPORTING BOARD:

- G. D. Simpson, Chairman,
- M. L. Koehn, Secretary,
- J. R. Kendall, E. B. Hannawald,
- B. S. Peterson, D. M. Bay,
- C. R. Brantner, H. L. Castle,
- C. E. Caudill, L. A. Fretwell,
- A. F. Feistner, M. H. Hammer,
- A. J. Hintzman, B. A. Nelson,
- W. H. Walther.

APPROVED:



ACTING SECRETARY OF AGRICULTURE

Hogs and Pigs: Number on farms, sows farrowing and pig crop,
United States, 1967-69

Item	1967	1968	1969	1969 as percent of 1968 Percent
		<u>1,000 head</u>		
<u>Number on farms-June 1:</u>				
All hogs and pigs	59,372	60,625	59,257	98
Kept for breeding	8,988	9,265	9,368	101
Market	50,384	51,360	49,889	97
<u>Market hogs and pigs</u>				
<u>by weight groups:</u>				
Under 60 pounds	26,029	25,997	24,206	93
60-119 pounds	11,889	11,921	12,096	101
120-179 pounds	7,373	7,796	7,833	100
180-219 pounds	3,804	4,189	4,367	104
220 pounds and over	1,289	1,457	1,387	95
<u>Sows farrowing:</u>				
December 1/-February	2,450	2,557	2,614	102
March-May	4,120	4,124	3,797	92
December-May	6,570	6,681	6,411	96
June-August	2,974	3,165	---	---
September-November	2,925	2,996	---	---
June-November	5,899	6,161	<u>2/6,362</u>	103
<u>Pig crop:</u>				
December 1/-May	48,205	49,236	47,152	96
June-November	43,540	45,303	<u>3/47,100</u>	104
Year	91,745	94,539	94,252	100
<u>Pigs per litter</u>		<u>Number</u>		
December 1/-May	7.34	7.37	7.35	xxx
June-November	7.38	7.35	<u>3/7.40</u>	xxx

1/ December preceding year.

2/ Intentions.

3/ Average number of pigs per litter with allowance for trend used to compute indicated June-November pig crop.

Hogs and Pigs: Number on farms, sows farrowing and pig crop,
1967-69, 10 States ^{1/}

Item	1967	1968	1969	1969 as percent of 1968 Percent
		<u>1,000 head</u>		
<u>Number on farms-June 1:</u>				
All hogs and pigs	45,801	46,717	45,026	96
Kept for breeding	6,774	6,997	7,064	101
Market	39,027	39,720	37,962	96
<u>Market hogs and pigs</u>				
<u>by weight groups</u>				
Under 60 pounds	20,599	20,681	18,711	90
60-119 pounds	8,978	8,946	9,032	101
120-179 pounds	5,512	5,789	5,801	100
180-219 pounds	2,929	3,161	3,358	106
220 pounds and over	1,009	1,143	1,060	93
<u>Sows farrowing</u>				
December ^{2/} -February	1,745	1,789	1,829	102
March-May	3,330	3,358	3,046	91
June-August	2,258	2,387	^{3/} 2,501	105
September-November	2,234	2,337	^{3/} 2,381	102
<u>Pig crop:</u>				
December ^{2/} -February	12,770	13,024	13,220	102
March-May	24,544	25,138	22,480	89
June-August	16,666	17,648	---	---
September-November	16,542	17,214	---	---
<u>Pigs per litter</u>		<u>Number</u>		
December ^{2/} -February	7.32	7.28	7.23	xxx
March-May	7.37	7.49	7.38	xxx
June-August	7.38	7.39	---	---
September-November	7.40	7.37	---	---

^{1/} See page 12 for States included.

^{2/} December preceding year.

^{3/} Intentions.

Hogs and Pigs: Number on farms, breeding, market and total, June 1, 1968 and 1969									
State	For breeding			Market			Total		
	1969		As % of 1968	1969		As % of 1968	1969		As % of 1968
	1968	Number		1968	Number		1968	Number	
	I,000 head	Percent	I,000 head	Percent	I,000 head	Percent	I,000 head	Percent	
Maine	2	2	100	8	6.6	82	10	8.6	86
N. H.	2	2	100	11	12	109	13	14	108
Vt.	.8	.7	88	4.9	4.4	90	5.7	5.1	90
Mass.	12	12	100	82	77	94	94	89	95
R. I.	1.1	1.3	118	8.2	8.4	102	9.3	9.7	104
Conn.	1	2	200	11	9	82	12	11	92
N. Y.	20	20	100	90	95	106	110	115	105
N. J.	12	12	100	117	121	103	129	133	103
Pa.	68	77	113	419	473	113	487	550	113
Ohio	382	395	103	2,167	2,154	99	2,549	2,549	100
Ind.	647	660	102	3,665	3,738	102	4,312	4,398	102
Ill.	1,109	1,057	95	5,997	5,552	93	7,106	6,609	93
Mich.	103	107	104	501	515	103	604	622	103
Wis.	313	332	106	1,475	1,510	102	1,788	1,842	103
Minn.	553	547	99	3,082	2,870	93	3,635	3,417	94
Iowa	2,223	2,258	102	13,109	12,307	94	15,332	14,565	95
Mo.	668	666	100	3,670	3,629	99	4,338	4,295	99
N. Dak.	60	54	90	337	335	99	397	389	98
S. Dak.	333	331	99	1,961	1,802	92	2,294	2,133	93
Nebr.	526	557	106	3,100	2,924	94	3,626	3,481	96
Kans.	243	261	107	1,494	1,476	99	1,737	1,737	100
Del.	6	7	117	29	30	103	35	37	106
Md.	27	29	107	133	139	105	160	168	105
Va.	91	95	104	477	501	105	568	596	105
W. Va.	12	12	100	71	65	92	83	77	93
N. C.	329	353	107	1,521	1,663	109	1,850	2,016	109
S. C.	76	86	113	396	433	109	472	519	110
Ga.	225	245	109	1,383	1,443	104	1,608	1,688	105
Fla.	56	63	112	255	285	112	311	348	112
Ky.	230	228	99	1,209	1,240	103	1,439	1,468	102
Tenn.	218	179	82	820	786	96	1,038	965	93
Ala.	151	158	105	853	836	98	1,004	994	99
Miss.	82	83	101	466	454	97	548	537	98
Ark.	48	52	108	221	206	93	269	258	96
La.	44	43	98	175	154	88	219	197	90
Okla.	61	60	98	323	278	86	384	338	88
Texas	150	133	89	735	752	102	885	885	100
Mont.	27	27	100	150	143	95	177	170	96
Idaho	19	19	100	98	103	105	117	122	104
Wyo.	6	5	83	24	23	96	30	28	93
Colo.	35	39	111	201	223	111	236	262	111
N. Mex.	10	10	100	40	46	115	50	56	112
Ariz.	8	9	112	46	48	104	54	57	106
Utah	10.0	10.0	100	41	41	100	51	51	100
Nev.	1.4	.9	64	8.6	4.8	56	10.0	5.7	57
Wash.	13	14	108	72	76	106	85	90	106
Oreg.	15	17	113	103	99	96	118	116	98
Calif.	26	27	104	143	150	105	169	177	105
48 States	9,255	9,358	101	51,303	49,840	97	60,558	59,198	98
Alaska	.3	.3	100	.9	1.0	111	1.2	1.3	108
Hawaii	10	10	100	56	48	86	66	58	88
U. S.	9,265	9,368	101	51,360	49,889	97	60,625	59,257	98

Market hogs and pigs: Number on farms, by weight groups, June 1, 1968 and 1969										
State	Under 60 lbs.		60-119 lbs.		120-179 lbs.		180-219 lbs.		220 lbs. and over	
	1968	1969	1968	1969	1968	1969	1968	1969	1968	1969
	1,000 head									
Maine	4	2.7	2	1.4	1	1.3	1	.9	---	.3
N. H.	5	4	2	4	2	2	1	1	1	1
Vt.	2.4	2.0	.9	.9	.8	.8	.5	.5	.3	.2
Mass.	33	26	20	19	13	17	11	9	5	6
R. I.	3	3.5	2.5	2.6	1.4	1.1	.7	.9	.6	.3
Conn.	3	4.3	3	1.7	3	1.8	2	.8	---	.4
N. Y.	37	39	22	22	19	17	8	13	4	4
N. J.	32	33	26	32	26	24	22	22	11	10
Pa.	180	204	105	118	80	90	42	47	12	14
Ohio	949	948	598	593	412	409	176	172	32	32
Ind.	1,576	1,525	935	1,028	751	755	330	355	73	75
Ill.	2,879	2,526	1,439	1,416	1,019	916	492	527	168	167
Mich.	253	268	112	126	78	67	47	46	11	8
Wis.	914	921	270	279	170	189	90	91	31	30
Minn.	1,710	1,535	678	674	370	359	247	230	77	72
Iowa	7,053	6,276	2,884	2,831	1,704	1,723	1,009	1,108	459	369
Mo.	1,908	1,742	734	780	569	617	330	363	129	127
N. Dak.	242	214	51	62	24	25	10	19	10	15
S. Dak.	1,284	1,090	353	361	167	180	98	108	59	63
Nebr.	1,736	1,491	666	687	388	409	232	249	78	88
Kans.	672	657	389	383	239	244	157	155	37	37
Del.	12	12	7	8	6	6	3	3	1	1
Md.	65	67	31	35	21	20	12	14	4	3
Va.	215	216	129	135	81	95	38	45	14	10
W. Va.	38	33	14	14	11	10	5	5	3	3
N. C.	671	739	394	466	281	289	137	126	38	43
S. C.	170	199	95	109	79	75	36	35	16	15
Ga.	595	678	387	404	276	260	97	79	28	22
Fla.	107	151	71	74	38	37	26	14	13	9
Ky.	568	608	302	285	194	198	121	112	24	37
Tenn.	361	362	221	196	148	141	74	71	16	16
Ala.	401	359	213	226	145	159	68	75	26	17
Miss.	210	204	130	122	70	82	42	32	14	14
Ark.	122	113	46	41	32	31	15	16	6	5
La.	100	83	49	43	14	14	7	6	5	8
Okla.	133	131	90	75	61	44	33	24	6	4
Texas	316	301	206	195	125	143	73	83	15	30
Mont.	68	72	36	33	21	18	15	13	10	7
Idaho	47	47	24	24	17	17	9	13	1	2
Wyo.	15	12	5	4	2	3	1	3	1	1
Colo.	91	97	44	57	40	42	21	21	5	6
N. Mex.	18	23	11	9	7	7	3	5	1	2
Ariz.	18	20	11	10	9	8	6	8	2	2
Utah	25	22	5	9	4	5	5	4	2	1
Nev.	4.1	2.4	2.8	1.3	1.1	.6	.5	.4	.1	.1
Wash.	30	28	20	21	13	17	7	7	2	3
Oreg.	42	36	25	26	24	21	10	13	2	3
Calif.	51	54	42	39	29	33	17	20	4	4
48 States	25,969	24,181	11,903	12,082	7,786	7,824	4,188	4,366	1,457	1,387
Alaska	.46	.59	.18	.21	.14	.15	.10	.04	.02	.01
Hawaii	27	24	18	14	10	9	1	1	---	---
U. S.	25,997	24,206	11,921	12,096	7,796	7,833	4,189	4,367	1,457	1,387

Farrowings: Number of sows, pigs per litter and pig crop, December 1/-May 1967-69											
State	Sows farrowing				Pigs per litter		Pig crop				
	1967	1968	1969		1968	1969	1967	1968	1969		
	Number	Number	Percent of 1968	Percent of 1968	Number	Number	Number	Number	Percent of 1968	Percent of 1968	
	1,000 head		Percent		Number		1,000 head		Percent		
Maine	1.2	1.1	1.0	91	6.5	6.4	7.7	7.2	6.4	89	
N. H.	1.3	1.2	1.2	100	7.0	7.2	9.4	8.4	8.6	102	
Vt.	.8	.6	.5	84	7.5	7.8	5.8	4.5	3.9	87	
Mass.	8.9	8.2	7.5	91	5.8	6.2	56	48	46	96	
R. I.	.7	.7	.9	129	6.3	6.3	4.2	4.4	5.7	130	
Conn.	1.3	1.2	1.1	92	5.9	6.0	8.3	7.1	6.6	93	
N. Y.	9.5	10.0	11	110	7.6	7.7	72	76	85	112	
N. J.	8.0	8.3	8.4	101	6.3	6.0	47	52	50	96	
Pa.	53	53	57	108	7.7	8.0	408	408	456	112	
Ohio	271	261	255	98	7.37	7.47	1,970	1,924	1,904	99	
Ind.	454	454	445	98	7.40	7.55	3,386	3,360	3,360	100	
Ill.	815	815	749	92	7.14	6.92	5,986	5,817	5,182	89	
Mich.	63	65	66	102	7.42	7.56	475	482	499	104	
Wis.	232	229	228	100	7.76	7.57	1,702	1,776	1,726	97	
Minn.	404	420	393	94	7.65	7.44	3,069	3,212	2,924	91	
Iowa	1,641	1,635	1,518	93	7.44	7.35	11,858	12,166	11,164	92	
Mo.	479	489	474	97	7.36	7.21	3,564	3,599	3,419	95	
N. Dak.	52	45	42	93	7.65	7.50	391	344	315	92	
S. Dak.	250	264	244	92	7.52	7.31	1,830	1,986	1,783	90	
Nebr.	361	402	384	96	7.41	7.33	2,684	2,978	2,816	95	
Kans.	168	178	185	104	7.55	7.69	1,265	1,344	1,422	106	
Del.	3.7	3.4	3.5	103	7.0	7.3	26	24	26	108	
Md.	18	16	17	106	7.5	7.3	133	120	124	103	
Va.	54	52	55	106	7.3	7.4	394	380	407	107	
W. Va.	7.3	7.2	6.8	95	7.7	7.6	54	55	52	95	
N. C.	200	212	225	106	7.5	7.8	1,520	1,590	1,755	110	
S. C.	51	50	53	106	7.0	7.3	357	350	387	111	
Ga.	176	181	188	104	7.1	7.3	1,250	1,285	1,372	107	
Fla.	34	34	36	106	6.8	7.1	235	231	256	111	
Ky.	155	167	167	100	7.3	7.5	1,132	1,219	1,252	103	
Tenn.	125	135	116	86	7.0	7.6	925	945	882	93	
Ala.	105	110	110	100	7.2	7.3	756	792	803	101	
Miss.	55	58	58	100	6.3	6.9	374	365	400	110	
Ark.	32	35	33	94	7.1	7.4	230	248	244	98	
La.	25	24	21	88	6.5	6.8	162	156	143	92	
Okla.	43	46	42	91	7.3	7.3	310	336	307	91	
Texas	90	90	87	97	7.1	7.5	648	639	652	102	
Mont.	19	18	18	100	7.8	7.4	146	140	133	95	
Idaho	13	13	13	100	8.0	7.9	98	104	103	99	
Wyo.	3.0	3.4	3.1	91	7.1	7.1	21	24	22	92	
Colo.	25	27	28	104	7.2	7.8	175	194	218	112	
N. Mex.	4.9	5.4	6.5	120	7.4	7.1	35	40	46	115	
Ariz.	4.4	5.5	6.3	115	8.1	8.2	35	45	52	116	
Utah	5.5	5.5	5.5	100	7.5	6.8	41	41	37	90	
Nev.	1.0	1.2	.7	58	6.4	5.9	6.3	7.7	4.1	53	
Wash.	7.5	8.0	8.5	106	8.3	8.2	62	66	70	106	
Oreg.	12	11	11	100	8.5	8.2	101	94	90	96	
Calif.	20	15	14	93	6.7	6.7	139	100	94	94	
48 States	6,564	6,675	6,405	96	7.37	7.36	48,164	49,195	47,113	96	
Alaska	.14	.13	.14	108	6.0	6.5	.80	.78	.91	117	
Hawaii	5.7	6.0	5.4	90	6.67	7.04	40	40	38	95	
U. S.	6,570	6,681	6,411	96	7.37	7.35	48,205	49,236	47,152	96	

1/ December preceding year.
 HOGS AND PIGS, June 1969

Farrowings: Number of sows by quarters, December 1/-February and March-May 1967-69								
State	December - February			1969 as: % of 1968:	March - May			1969 as: % of 1968
	1967	1968	1969		1967	1968	1969	
	1,000 head			Percent	1,000 head			Percent
Maine	.3	.3	.2	67	.9	.8	.8	100
N. H.	.2	.2	.2	100	1.1	1.0	1.0	100
Vt.	.2	.2	.1	50	.6	.4	.4	100
Mass.	2.7	2.1	2.1	100	6.2	6.1	5.4	89
R. I.	.3	.3	.3	100	.4	.4	.6	150
Conn.	.4	.5	.4	80	.9	.7	.7	100
N. Y.	3.0	3.3	5.5	167	6.5	6.7	5.5	97
N. J.	2.7	3.4	3.8	112	5.3	4.9	4.6	94
Pa.	23	24	27	112	30	29	30	103
Ohio	116	115	115	100	155	146	140	96
Ind.	219	219	215	98	235	235	230	98
Ill.	307	307	307	100	508	508	442	87
Mich.	22	29	30	103	41	36	36	100
Wis.	83	80	78	98	149	149	150	101
Minn.	136	141	147	104	268	279	246	88
Iowa	462	480	490	102	1,179	1,155	1,028	89
Mo.	186	190	196	103	293	299	278	93
N. Dak.	9	9	13	144	43	36	29	81
S. Dak.	50	58	67	116	200	206	177	86
Nebr.	116	125	135	108	245	277	249	90
Kans.	70	74	79	107	98	104	106	102
Del.	1.6	1.5	1.9	127	2.1	1.9	1.6	84
Md.	9.0	7.7	8.0	104	9.0	8.3	9.0	108
Va.	29	27	28	104	25	25	27	108
W. Va.	2.4	2.4	2.2	92	4.9	4.8	4.6	96
N. C.	98	113	122	108	102	99	103	104
S. C.	26	27	27	100	25	23	26	113
Ga.	97	105	103	98	79	76	85	112
Fla.	18	17	19	112	16	17	17	100
Ky.	70	79	92	116	85	88	75	85
Tenn.	59	71	58	82	66	64	58	91
Ala.	56	60	60	100	49	50	50	100
Miss.	29	29	31	107	26	29	27	93
Ark.	15	19	16	84	17	16	17	106
La.	14	13	12	92	11	11	9	82
Okla.	21	23	20	87	22	23	22	96
Texas	42	47	44	94	48	43	43	100
Mont.	6.0	7.0	8.0	114	13	11	10.0	91
Idaho	6.0	5.0	6.0	120	7.0	8.0	7.0	88
Wyo.	.8	1.1	1.1	100	2.2	2.3	2.0	87
Colo.	10	12	13	108	15	15	15	100
N. Mex.	2.4	2.8	3.2	114	2.5	2.6	3.3	127
Ariz.	2.2	2.9	3.3	114	2.2	2.6	3.0	115
Utah	2.1	2.4	2.6	108	3.4	3.1	2.9	94
Nev.	.3	.4	.3	75	.7	.8	.4	50
Wash.	3.2	3.8	4.3	74	4.3	4.2	4.2	100
Oreg.	7.0	6.0	6.0	100	5.0	5.0	5.0	100
Calif.	11	8.0	7.0	88	9.0	7.0	7.0	100
48 States	2,447	2,554	2,611	102	4,117	4,121	3,794	92
Alaska	.04	.05	.05	100	.10	.08	.09	112
Hawaii	2.9	3.0	2.7	89	2.8	3.0	2.7	90
U. S.	2,450	2,557	2,614	102	4,120	4,124	3,797	92

Farrowings: Number of sows, pigs per litter and pig crop, June-November 1967-69

State	Sows farrowing				Pigs per litter		Pig crop	
	1967	1968	1969	As % of	1967	1968	1967	1968
	1,000 head		Number	Percent	Number		1,000 head	
Maine	1.1	1.1	1.1	100	6.8	8.0	7.5	8.8
N. H.	1.4	1.5	1.6	107	7.4	6.8	10	10.2
Vt.	.9	.8	.7	88	7.1	7.5	6.4	6.0
Mass.	8.0	8.5	8.5	100	6.4	6.4	51	54
R. I.	.7	.8	.9	113	6.6	5.5	4.6	4.4
Conn.	1.2	1.0	1.0	100	6.3	6.4	7.6	6.4
N. Y.	9.1	10.0	10.0	100	7.9	7.4	72	74
N. J.	7.5	7.2	6.7	93	6.0	6.3	45	45
Pa.	45	50	55	110	7.8	7.5	351	375
Ohio	263	267	285	107	7.52	7.47	1,979	1,994
Ind.	438	450	459	102	7.56	7.36	3,310	3,314
Ill.	799	827	811	98	7.31	7.14	5,840	5,909
Mich.	75	70	77	110	7.52	7.40	564	518
Wis.	216	219	241	110	7.59	7.76	1,640	1,699
Minn.	325	349	360	103	7.51	7.44	2,440	2,597
Iowa	1,345	1,425	1,475	104	7.33	7.40	9,858	10,552
Mo.	503	525	537	102	7.31	7.25	3,678	3,805
N. Dak.	27	26	25	96	7.59	7.50	205	195
S. Dak.	152	159	171	108	7.22	7.45	1,097	1,185
Nebr.	292	331	354	107	7.42	7.52	2,168	2,490
Kans.	159	172	189	110	7.53	7.66	1,198	1,317
Del.	4.4	4.7	4.5	96	7.4	7.1	33	33
Md.	19	20	20	100	7.4	7.3	141	146
Va.	55	57	60	105	7.6	7.5	418	428
W. Va.	8.0	7.7	7.0	91	7.8	7.7	62	59
N. C.	145	151	175	116	7.6	7.5	1,102	1,132
S. C.	43	45	48	107	7.0	7.1	301	320
Ga.	152	161	169	105	7.2	7.2	1,094	1,159
Fla.	29	36	40	111	7.1	6.9	206	248
Ky.	155	152	152	100	7.5	7.3	1,162	1,110
Tenn.	124	124	114	92	7.4	7.2	918	893
Ala.	95	102	102	100	7.2	7.2	684	734
Miss.	53	50	51	102	6.9	7.0	366	350
Ark.	43	45	45	100	7.4	7.0	318	315
La.	22	19	20	105	6.4	6.4	141	122
Okla.	51	49	44	90	7.3	7.2	372	353
Texas	113	114	106	93	7.1	7.1	802	809
Mont.	17	18	20	109	7.5	7.9	128	142
Idaho	12	12	13	108	7.8	7.9	94	95
Wyo.	2.3	2.8	2.7	96	7.3	7.8	17	22
Colo.	25	29	35	119	7.5	7.3	187	212
N. Mex.	4.7	5.6	6.1	109	7.5	7.5	35	42
Ariz.	5.2	6.2	6.5	105	8.0	7.6	42	47
Utah	6.5	6.5	7.0	108	7.0	7.5	46	49
Nev.	1.0	1.1	.7	64	7.0	7.5	7.0	8.2
Wash.	8.0	7.4	8.4	114	7.7	8.4	62	62
Oreg.	13	12	12	100	8.3	8.5	108	102
Calif.	18	16	17	106	6.7	6.8	121	109
48 States	5,893	6,152	6,356	103	7.38	7.35	43,499	45,260
Alaska	.19	.15	.19	127	5.8	6.1	1.1	.92
Hawaii	5.7	6.0	5.8	97	7.02	7.00	40	42
U. S.	5,899	6,161	6,362	103	7.38	7.35	43,540	45,303

1/ Intentions.
HOGS AND PIGS, June 1969

Farrowings: Number of sows, by quarters, June-August and September-November
1967-1968

State	June - August		1968 as % of 1967	September - November		1968 as % of 1967
	1967	1968		1967	1968	
	1,000 head		Percent	1,000 head		Percent
Maine	.7	.9	129	.4	.2	50
N. H.	.8	.9	112	.6	.6	100
Vt.	.4	.5	125	.5	.3	60
Mass.	4.1	5.7	139	3.9	2.8	72
R. I.	.4	.5	125	.3	.3	100
Conn.	.6	.4	67	.6	.6	100
N. Y.	4.1	5.0	122	5.0	5.0	100
N. J.	4.0	3.8	95	3.5	3.4	97
Pa.	21	24	114	24	26	108
Ohio	142	142	100	121	125	103
Ind.	254	262	103	184	188	102
Ill.	417	434	104	382	393	103
Mich.	43	41	95	32	29	91
Wis.	108	108	100	108	111	103
Minn.	178	190	107	147	159	108
Iowa	665	718	108	680	707	104
Mo.	235	249	106	268	276	103
N. Dak.	15	17	113	12	9	75
S. Dak.	64	68	106	88	91	103
Nebr.	122	139	114	170	192	113
Kans.	73	77	105	86	95	110
Del.	2.7	3.0	111	1.7	1.7	100
Md.	10	12	120	9.0	8.0	89
Va.	29	30	103	26	27	104
W. Va.	3.2	3.1	97	4.8	4.6	96
N. C.	76	80	105	69	71	103
S. C.	20	23	115	23	22	96
Ga.	79	84	106	73	77	105
Fla.	15	18	120	14	18	129
Ky.	82	88	107	73	64	88
Tenn.	60	66	110	64	58	91
Ala.	48	59	123	47	43	91
Miss.	29	30	103	24	20	83
Ark.	24	24	100	19	21	111
La.	12	11	92	10	8	80
Okla.	23	23	100	28	26	93
Texas	49	62	127	64	52	81
Mont.	8	10	125	9	8	89
Idaho	6	6	100	6	6	100
Wyo.	1.2	1.4	117	1.1	1.4	127
Colo.	13	13	100	12	16	133
N. Mex.	2.0	2.9	145	2.7	2.7	100
Ariz.	2.4	3.4	142	2.8	2.8	100
Utah	2.6	3.7	142	3.9	2.8	72
Nev.	.5	.6	120	.5	.5	100
Wash.	4.2	3.0	71	3.8	4.4	116
Oreg.	8.0	7.0	88	5.0	5.0	100
Calif.	9.0	8.0	89	9.0	8.0	89
48 States	2,971	3,162	106	2,922	2,993	102
Alaska	.12	.09	75	.07	.06	86
Hawaii	2.9	3.0	103	2.8	3.0	107
U. S.	2,974	3,165	106	2,925	2,996	102

Hogs and Pigs: Number on farms, breeding, market and total,
March 1, 1968 and 1969, selected States

State	For breeding		Market		Total				
	1968	1969	1968	1969	1968	1969			
	Number	As % of 1968	Number	As % of 1968	Number	As % of 1968			
	1,000 head	Percent	1,000 head	Percent	1,000 head	Percent			
Ohio	363	362	100	1,981	2,052	104	2,344	2,414	103
Indiana	662	675	102	3,473	3,543	102	4,135	4,218	102
Illinois	1,105	1,115	101	5,396	5,256	97	6,501	6,371	98
Wisconsin	332	321	97	1,111	1,136	102	1,443	1,457	101
Minnesota	524	536	102	2,263	2,362	104	2,787	2,898	104
Iowa	2,414	2,511	104	10,293	10,704	104	12,707	13,215	104
Missouri	703	738	105	3,203	3,363	105	3,906	4,101	105
S. Dakota	356	326	92	1,126	1,304	116	1,482	1,630	110
Nebraska	561	553	99	2,390	2,605	109	2,951	3,158	107
Kansas	245	255	104	1,285	1,443	112	1,530	1,698	111
Total 10 States	7,265	7,392	102	32,521	33,768	104	39,786	41,160	103
Hawaii	10	10	100	57	51	89	67	61	91

Market Hogs and Pigs: Number on farms, by weight groups,
March 1, 1968 and 1969, selected States

State	Under 60 lbs.		60-119 lbs.		120-179 lbs.		180-219 lbs.		220 lbs. and over	
	1968	1969	1968	1969	1968	1969	1968	1969	1968	1969
	1,000 head									
Ohio	772	759	446	482	475	503	248	267	40	41
Indiana	1,406	1,453	785	779	747	772	462	461	73	78
Illinois	1,851	1,850	1,187	1,183	1,408	1,340	810	736	140	147
Wisconsin	475	471	219	231	239	251	156	159	22	24
Minnesota	928	944	430	449	475	520	362	378	68	71
Iowa	3,531	3,714	2,131	2,172	2,779	2,837	1,492	1,606	360	375
Missouri	1,217	1,312	769	790	736	757	359	370	122	134
S. Dakota	417	456	231	287	281	346	158	169	39	46
Nebraska	860	925	549	586	598	651	323	365	60	78
Kansas	488	577	283	318	302	289	180	216	32	43
Total 10 States	11,945	12,461	7,030	7,277	8,040	8,266	4,550	4,727	956	1,037
Hawaii	27	23	18	17	11	10	1	1	---	---

Hogs and Pigs: Number on farms, breeding, market and total,
June 1, 1968 and 1969, selected States

State	For breeding			Market			Total		
	1968	1969	As % of 1968	1968	1969	As % of 1968	1968	1969	As % of 1968
	Number	Number	1968	Number	Number	1968	Number	Number	1968
	1,000 head	Percent		1,000 head	Percent		1,000 head	Percent	
Ohio	382	395	103	2,167	2,154	99	2,549	2,549	100
Indiana	647	660	102	3,665	3,738	102	4,312	4,398	102
Illinois	1,109	1,057	95	5,997	5,552	93	7,106	6,609	93
Wisconsin	313	332	106	1,475	1,510	102	1,788	1,842	103
Minnesota	553	547	99	3,082	2,870	93	3,635	3,417	94
Iowa	2,223	2,258	102	13,109	12,307	94	15,332	14,565	95
Missouri	668	666	100	3,670	3,629	99	4,338	4,295	99
S. Dakota	333	331	99	1,961	1,802	92	2,294	2,133	93
Nebraska	526	557	106	3,100	2,924	94	3,626	3,481	96
Kansas	243	261	107	1,494	1,476	99	1,737	1,737	100
Total 10 States	6,997	7,064	101	39,720	37,962	96	46,717	45,026	96
Hawaii	10	10	100	56	48	86	66	58	88

Market Hogs and Pigs: Number on farms, by weight groups,
June 1, 1968 and 1969, selected States

State	Under 60 lbs.		60-119 lbs.		120-179 lbs.		180-219 lbs.		220 lbs. and over	
	1968	1969	1968	1969	1968	1969	1968	1969	1968	1969
	1,000 head									
Ohio	949	948	598	593	412	409	176	172	32	32
Indiana	1,576	1,525	935	1,028	751	755	330	355	73	75
Illinois	2,879	2,526	1,439	1,416	1,019	916	492	527	168	167
Wisconsin	914	921	270	279	170	189	90	91	31	30
Minnesota	1,710	1,535	678	674	370	359	247	230	77	72
Iowa	7,053	6,276	2,884	2,831	1,704	1,723	1,009	1,108	459	369
Missouri	1,908	1,742	734	780	569	617	330	363	129	127
S. Dakota	1,284	1,090	353	361	167	180	98	108	59	63
Nebraska	1,736	1,491	666	687	388	409	232	249	78	88
Kansas	672	657	389	383	239	244	157	155	37	37
Total 10 States	20,681	18,711	8,946	9,032	5,789	5,801	3,161	3,358	1,143	1,060
Hawaii	27	24	18	14	10	9	1	1	---	---

Farrowings: Number of sows, pigs per litter and pig crop,
December 1/ - February 1967-1969, selected States

State	Sows farrowing				Pigs per litter		Pig crop 2/		
	1967	1968	1969	As % of 1968	1968	1969	1968	1969	As % of 1968
	Number		Number	Percent	Number		Number		Percent
	1,000 head		Percent		Number		1,000 head		Percent
Ohio	116	115	115	100	7.10	7.30	816	840	103
Ind.	219	219	215	98	7.26	7.58	1,590	1,630	103
Ill.	307	307	307	100	7.05	6.80	2,164	2,088	96
Wis.	83	80	78	98	7.79	7.62	623	594	95
Minn.	136	141	147	104	7.78	7.42	1,097	1,091	99
Iowa	462	480	490	102	7.25	7.05	3,480	3,454	99
Mo.	186	190	196	103	7.08	7.33	1,345	1,437	107
S. Dak.	50	58	67	116	7.60	7.33	441	491	111
Nebr.	116	125	135	108	7.45	7.30	931	986	106
Kans.	70	74	72	107	7.26	7.71	537	609	113
Total 10 States	1,745	1,789	1,829	102	7.28	7.23	13,024	13,220	102
Hawaii	2.9	3.0	2.7	89	6.65	6.89	20	19	95

1/ December preceding year.

2/ Number of pigs born December through February that were on hand March 1 or had been sold.

Farrowings: Number of sows, pigs per litter and pig crop,
March-May 1967-1969, selected States

State	Sows farrowing				Pigs per litter		Pig crop 1/		
	1967	1968	1969	As % of 1968	1968	1969	1968	1969	As % of 1968
	Number		Number	Percent	Number		Number		Percent
	1,000 head		Percent		Number		1,000 head		Percent
Ohio	155	146	140	96	7.59	7.60	1,108	1,064	96
Ind.	235	235	230	98	7.53	7.52	1,770	1,730	98
Ill.	508	508	442	87	7.19	7.00	3,653	3,094	85
Wis.	149	149	150	101	7.74	7.55	1,153	1,132	98
Minn.	268	279	246	88	7.58	7.45	2,115	1,833	87
Iowa	1,179	1,155	1,028	89	7.52	7.50	8,686	7,710	89
Mo.	293	299	278	93	7.54	7.13	2,254	1,982	88
S. Dak.	200	206	177	86	7.50	7.30	1,545	1,292	84
Nebr.	245	277	249	90	7.39	7.35	2,047	1,830	89
Kans.	98	104	106	102	7.76	7.67	807	813	101
Total 10 States	3,330	3,358	3,046	91	7.49	7.38	25,138	22,480	89
Hawaii	2.8	3.0	2.7	90	6.66	7.04	20	19	95

1/ Number of pigs born March through May that were on hand June 1 or had been sold.

Farrowings: Number of sows, pigs per litter and pig crop,
June-August, 1967-1969, selected States

State	Sows farrowing				Pigs per litter	Pig crop ^{2/}
	1967	1968	1969 1/	As % of 1968		
	1,000 head		Percent	Number	1,000 head	
Ohio	142	142	153	108	7.53	1,069
Ind.	254	262	262	100	7.21	1,889
Ill.	417	434	430	99	7.16	3,107
Wis.	108	108	119	110	7.86	849
Minn.	178	190	209	110	7.56	1,436
Iowa	665	718	747	104	7.46	5,356
Mo.	235	249	261	105	7.27	1,810
S. Dak.	64	68	75	110	7.23	492
Nebr.	122	139	160	115	7.54	1,048
Kans.	73	77	85	110	7.69	592
Total 10 States	2,258	2,387	2,501	105	7.39	17,648
Hawaii	2.9	3.0	2.9	97	7.40	22

1/ Intentions.

2/ Number of pigs born June through August that were on hand September 1 or had been sold.

Farrowings: Number of sows, pigs per litter and pig crop,
September-November 1967-1969, selected States

State	Sows farrowing				Pigs per litter	Pig crop ^{2/}
	1967	1968	1969 1/	As % of 1968		
	1,000 head		Percent	Number	1,000 head	
Ohio	121	125	132	106	7.40	925
Indiana	184	188	197	105	7.58	1,425
Illinois	382	393	381	97	7.13	2,802
Wisconsin	108	111	122	110	7.66	850
Minnesota	147	159	151	95	7.30	1,161
Iowa	680	707	728	103	7.35	5,196
Missouri	268	276	276	100	7.23	1,995
South Dakota	88	91	96	105	7.62	693
Nebraska	170	192	194	101	7.51	1,442
Kansas	86	95	104	110	7.63	725
Total 10 States	2,234	2,337	2,381	102	7.37	17,214
Hawaii	2.8	3.0	2.9	97	6.67	20

1/ Intentions.

2/ Number of pigs born September through November that were on hand December 1 or had been sold.

UNITED STATES DEPARTMENT OF AGRICULTURE
 STATISTICAL REPORTING SERVICE
 WASHINGTON, D. C. 20250

OFFICIAL BUSINESS



Hogs and Pigs: Number on farms, pig crop, inshipments, death loss and marketings,
 March-May 1968 and 1969, 10 States ^{1/}

I t e m	1 9 6 8	1 9 6 9
	- - <u>-1,000 head</u> - - -	
Hogs and Pigs on Farms March 1	39,786	41,160
Pig Crop March-May	25,138	22,480
Inshipments ^{2/} March-May	308	341
Slaughter ^{3/} March-May	17,413	17,765
Death Loss March-May	1,102	1,190
Hogs and Pigs on Farms June 1	46,717	45,026

^{1/} See page 12 for listing of 10 States.

^{2/} Includes only those shipped in from States outside the 10 States.

^{3/} Includes farm slaughter, and feeder pig outshipments to States other than the 10 States.