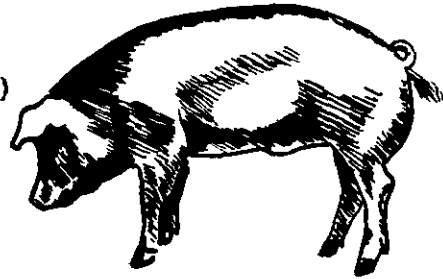


HOGS AND PIGS

DECEMBER 1969 (U. S. and 10 Corn Belt States)



In this issue:

- ★ December 1 Inventory
- ★ Sows Farrowing
- ★ Pig Crop

Release:
December 23, 1969
3:00 P.M. EST

Hogs and pigs on farms in the United States on December 1, 1969 are estimated at 56.7 million head according to the Crop Reporting Board. This is a decrease of 6 percent from a year earlier. Hogs kept for breeding are estimated at 8.9 million, down 5 percent, and market hogs at 47.8 million, down 7 percent.

The June-November 1969 pig crop is estimated at 42.1 million head, 7 percent below a year earlier. A total of 5.7 million sows farrowed in this period, 6 percent less than a year earlier.

The December 1968-May 1969 pig crop is estimated at 46.9 million head, down 5 percent from a year earlier. The total pig crop expected for 1969 (December 1968 through November 1969) is 88.9 million, down 6 percent from a year earlier.

Hog producers intend to farrow 6.6 million sows from December 1969-May 1970, 3 percent more than a year earlier. If these intentions are realized and pigs per litter are average, allowing for trend, the pig crop for the period will be 48.6 million head, 4 percent more than last year.

HOGS AND PIGS ON FARMS DECEMBER 1, 1969

The number of hogs and pigs on farms December 1 is estimated at 56,743,000 head -- down 6 percent from a year earlier. Breeding hogs totaled 8,953,000, a decrease of 5 percent from 1968. Hogs and pigs for market totaled 47,790,000, down 7 percent from a year earlier.

By weight groups, market hogs and pigs on hand December 1, 1969, and the percentage change from a year earlier are: less than 60 pounds, 17,511,000 head, down 5 percent; 60-119 pounds, 13,010,000 head, down 6 percent; 120-179 pounds, 9,624,000 head, down 9 percent; and 180 pounds and heavier, 7,645,000 head, down 8 percent.

UNITED STATES DEPARTMENT OF AGRICULTURE

Statistical Reporting Service

IMtAn 4 (12-69)

Crop Reporting Board

Washington, D. C. 20250

Smaller hog numbers in the North Central and South Central regions more than offset increases in the North Atlantic and South Atlantic regions. The Western region inventory was the same on December 1, 1969 as a year earlier.

In the 10 Corn Belt States--Ohio, Indiana, Illinois, Wisconsin, Minnesota, Iowa, Missouri, South Dakota, Nebraska and Kansas -- on December 1 hogs and pigs are estimated at 42,752,000 head, down 9 percent from a year earlier, accounting for 75 percent of the total U.S. hog and pig inventory. Iowa, accounting for about a fourth of U.S. hogs, had 12 percent less than a year earlier.

Market hogs and pigs in the 10 States totaled 36,031,000, down 9 percent from a year earlier. Breeding hogs in the 10 States totaled 6,721,000, down 7 percent from December 1, 1968.

JUNE-NOVEMBER PIG CROP DOWN 7 PERCENT

The June-November 1969 pig crop totaled 42,071,000 head, a decrease of 7 percent from a year earlier. The West North Central region was down 11 percent, East North Central, 5 percent, the South Central down slightly, but all the other regions showed small increases.

Sows farrowed during June-November 1969 totaled 5,735,000 head, down 6 percent from a year earlier.

Average litter size during June-November 1969 was 7.34 pigs compared with 7.35 for this period a year earlier.

The June-August 1969 pig crop in the 10 Corn Belt States totaled 15,850,000 head, a decrease of 10 percent from a year earlier. Sows farrowed during the quarter totaled 2,155,000 head.

The September-November 1969 pig crop in the 10 Corn Belt States totaled 15,604,000 head, down 9 percent from the same period in 1968. Sows farrowed totaled 2,149,000 head.

(Continued on page 20)

CROP REPORTING BOARD:

G. D. Simpson, Chairman,
M. L. Koehn, Secretary,

APPROVED:

| | |
|-------------------|------------------|
| J. R. Kendall, | E. B. Hannawald, |
| K. E. Logan, | D. D. Pittman, |
| R. H. Sutherland, | D. M. Bay, |
| C. E. Caudill, | A. R. Feistner, |
| R. C. Halley, | M. H. Hammer, |
| A. J. Hintzman, | S. W. Lebahn, |
| H. M. McWilliams, | W. H. Walther. |

Clarence D. Salmburg

ACTING SECRETARY OF AGRICULTURE

Hogs and Pigs: Number on farms, sows farrowing and pig crop,
United States, 1967-70

| Item | 1967 | 1968 | 1969 | 1970 | 1969 as percent of 1968 | 1970 as percent of 1969 |
|------------------------------------|------------|--------|--------|----------|-------------------------------|-------------------------------|
| | 1,000 head | | | | Percent | |
| Number on farms-December 1: | | | | | | |
| All hogs and pigs | 58,777 | 60,632 | 56,743 | --- | 94 | --- |
| Kept for breeding | 9,181 | 9,437 | 8,953 | --- | 95 | --- |
| Market | 49,596 | 51,195 | 47,790 | --- | 93 | --- |
| Market hogs and pigs | | | | | | |
| by weight groups: | | | | | | |
| Under 60 pounds | 18,013 | 18,419 | 17,511 | --- | 95 | --- |
| 60-119 pounds | 13,398 | 13,899 | 13,010 | --- | 94 | --- |
| 120-179 pounds | 9,853 | 10,527 | 9,624 | --- | 91 | --- |
| 180-219 pounds | 6,232 | 6,284 | 5,767 | --- | 92 | --- |
| 220 pounds and over | 2,100 | 2,066 | 1,878 | --- | 91 | --- |
| Sows farrowing: | | | | | | |
| December 1/-February | 2,450 | 2,557 | 2,571 | --- | 101 | --- |
| March-May | 4,120 | 4,112 | 3,801 | --- | 92 | --- |
| December 1/-May | 6,570 | 6,669 | 6,372 | 2/6,568 | 96 | 103 |
| June-August | 2,974 | 3,152 | 2,942 | --- | 93 | --- |
| September-November | 2,925 | 2,977 | 2,793 | --- | 94 | --- |
| June-November | 5,899 | 6,129 | 5,735 | --- | 94 | --- |
| Pig crop: | | | | | | |
| December 1/-May | 48,205 | 49,146 | 46,877 | 3/48,603 | 95 | 104 |
| June-November | 43,540 | 45,071 | 42,071 | --- | 93 | --- |
| Year | 91,745 | 94,217 | 88,948 | --- | 94 | --- |
| Pigs per litter: | | | | | | |
| December 1/-May | 7.34 | 7.37 | 7.36 | 3/7.40 | 100 | 101 |
| June-November | 7.38 | 7.35 | 7.34 | --- | 100 | --- |

1/ December preceding year.

2/ Intentions.

3/ Average number of pigs per litter with allowance for trend used to compute indicated December-May pig crop.

Hogs and Pigs: Number on farms, sows farrowing and pig crop
10 States, 1967-70

| Item | 1967 | 1968 | 1969 | 1970 | 1969 as percent of 1968 | 1970 as percent of 1969 |
|-----------------------------|---------------|--------|--------|---------|-------------------------------|-------------------------------|
| | 1,000 head | | | | Percent | |
| <u>Number on Farms</u> | | | | | | |
| <u>December 1:</u> | | | | | | |
| All hogs and pigs | 44,997 | 46,760 | 42,752 | --- | 91 | --- |
| Kept for breeding ... | 7,057 | 7,263 | 6,721 | --- | 93 | --- |
| Market | 37,940 | 39,497 | 36,031 | --- | 91 | --- |
| <u>Market hogs and pigs</u> | | | | | | |
| <u>by weight groups</u> | | | | | | |
| Under 60 pounds | 13,388 | 13,881 | 12,893 | --- | 93 | --- |
| 60-119 pounds | 10,262 | 10,793 | 9,892 | --- | 92 | --- |
| 120-179 pounds | 7,704 | 8,245 | 7,362 | --- | 89 | --- |
| 180-219 pounds | 5,067 | 5,072 | 4,575 | --- | 90 | --- |
| 220 pounds and over ... | 1,519 | 1,506 | 1,309 | --- | 87 | --- |
| <u>Sows farrowing</u> | | | | | | |
| December 1/-February ... | 1,745 | 1,789 | 1,782 | 2/1,805 | 100 | 101 |
| March-May | 3,330 | 3,346 | 3,046 | 2/3,144 | 91 | 103 |
| June-August | 2,258 | 2,373 | 2,155 | --- | 91 | --- |
| September-November | 2,234 | 2,319 | 2,149 | --- | 93 | --- |
| <u>Pig Crop</u> | | | | | | |
| December 1/-February ... | 12,770 | 13,024 | 12,882 | --- | 99 | --- |
| March-May | 24,544 | 25,049 | 22,480 | --- | 90 | --- |
| June-August | 16,666 | 17,546 | 15,850 | --- | 90 | --- |
| September-November | 16,542 | 17,083 | 15,604 | --- | 91 | --- |
| <u>Pigs per litter</u> | | | | | | |
| | <u>Number</u> | | | | | |
| December 1/-February ... | 7.32 | 7.28 | 7.23 | --- | 99 | --- |
| March-May | 7.37 | 7.49 | 7.38 | --- | 99 | --- |
| June-August | 7.38 | 7.39 | 7.35 | --- | 99 | --- |
| September-November | 7.40 | 7.37 | 7.26 | --- | 98 | --- |

1/ December preceding year.

2/ Intentions.

Hogs and Pigs: On farm, pig crop, inshipments, death loss and marketings,
by quarters, December 1, 1967-69, 10 States ^{1/}

| Item | 1967 | 1968 | |
|---|-----------------------|--------|--------------|
| | | Number | As % of 1967 |
| | - <u>1,000 head</u> - | | |
| Hogs and Pigs on hand December 1 | 44,997 | 46,760 | 104 |
| | | | |
| | 1968 | 1969 | |
| | | Number | As % of 1968 |
| Pig Crop December ^{2/} - February | 13,024 | 12,882 | 99 |
| Inshipments ^{3/} December ^{2/} - February | 185 | 219 | 118 |
| Slaughter ^{4/} December ^{2/} - February | 17,337 | 18,186 | 105 |
| Death Loss December ^{2/} - February | 1,083 | 1,136 | 105 |
| Hogs and Pigs on hand March 1 | 39,786 | 40,539 | 102 |
| Pig Crop March - May | 25,049 | 22,480 | 90 |
| Inshipments ^{3/} March - May | 318 | 341 | 107 |
| Slaughter ^{4/} March - May | 17,339 | 17,521 | 101 |
| Death Loss March - May | 1,165 | 1,190 | 102 |
| Hogs and Pigs on hand June 1 | 46,649 | 44,649 | 96 |
| Pig Crop June - August | 17,546 | 15,850 | 90 |
| Inshipments ^{3/} June - August | 294 | 285 | 97 |
| Slaughter ^{4/} June - August | 15,135 | 14,826 | 98 |
| Death Loss June - August | 1,064 | 1,040 | 98 |
| Hogs and Pigs on hand September 1 | 48,290 | 44,918 | 93 |
| Pig Crop September - November | 17,083 | 15,604 | 91 |
| Inshipments ^{3/} September - November | 303 | 340 | 112 |
| Slaughter ^{4/} September - November | 17,996 | 17,110 | 95 |
| Death Loss September - November | 920 | 1,000 | 109 |
| Hogs and Pigs on hand December 1 | 46,760 | 42,752 | 91 |

^{1/} See page 14 for States included.

^{2/} December preceding year.

^{3/} Includes only those shipped in from States outside the 10 States.

^{4/} Includes farm slaughter, and feeder pig outshipments to States other than the 10 States.

Hogs and Pigs: Number on farms, breeding, market and total,
December 1, 1968 and 1969

| State | Breeding | | | Market | | | Total | | |
|-----------|------------|---------|--------------|------------|---------|--------------|------------|---------|--------------|
| | 1969 | | | 1969 | | | 1969 | | |
| | 1968 | Number | As % of 1968 | 1968 | Number | As % of 1968 | 1968 | Number | As % of 1968 |
| | 1,000 head | Percent | | 1,000 head | Percent | | 1,000 head | Percent | |
| Maine | 2 | 2 | 100 | 9 | 9 | 100 | 11 | 11 | 100 |
| N. H. | 2 | 2 | 100 | 13 | 12 | 92 | 15 | 14 | 93 |
| Vt. | .9 | 1.0 | 111 | 5.2 | 5.7 | 110 | 6.1 | 6.7 | 110 |
| Mass. | 12 | 12 | 100 | 83 | 77 | 93 | 95 | 89 | 94 |
| R. I. | 1.2 | 1 | 83 | 8.1 | 9 | 111 | 9.3 | 10 | 108 |
| Conn. | 2 | 2 | 100 | 9 | 8 | 89 | 11 | 10 | 91 |
| N. Y. | 15 | 14 | 93 | 88 | 89 | 101 | 103 | 103 | 100 |
| N. J. | 12 | 13 | 108 | 115 | 108 | 94 | 127 | 121 | 95 |
| Pa. | 71 | 80 | 113 | 476 | 533 | 112 | 547 | 613 | 112 |
| Ohio | 362 | 358 | 99 | 2,221 | 2,199 | 99 | 2,583 | 2,557 | 99 |
| Ind. | 621 | 585 | 94 | 3,878 | 3,914 | 101 | 4,499 | 4,499 | 100 |
| Ill. | 1,092 | 983 | 90 | 6,187 | 5,568 | 90 | 7,279 | 6,551 | 90 |
| Mich. | 91 | 104 | 114 | 515 | 587 | 114 | 606 | 691 | 114 |
| Wis. | 318 | 294 | 92 | 1,450 | 1,386 | 96 | 1,768 | 1,680 | 95 |
| Minn. | 543 | 531 | 98 | 2,821 | 2,631 | 93 | 3,364 | 3,162 | 94 |
| Iowa | 2,536 | 2,302 | 91 | 13,316 | 11,648 | 87 | 15,852 | 13,950 | 88 |
| Mo. | 707 | 672 | 95 | 3,855 | 3,525 | 91 | 4,562 | 4,197 | 92 |
| N. Dak. | 61 | 60 | 98 | 260 | 255 | 98 | 321 | 315 | 98 |
| S. Dak. | 335 | 301 | 90 | 1,525 | 1,373 | 90 | 1,860 | 1,674 | 90 |
| Nebr. | 484 | 440 | 91 | 2,742 | 2,399 | 87 | 3,226 | 2,839 | 88 |
| Kans. | 265 | 255 | 96 | 1,502 | 1,388 | 92 | 1,767 | 1,643 | 93 |
| Del. | 6 | 6 | 100 | 34 | 34 | 100 | 40 | 40 | 100 |
| Md. | 30 | 29 | 97 | 168 | 163 | 97 | 198 | 192 | 97 |
| Va. | 83 | 87 | 105 | 530 | 532 | 100 | 613 | 619 | 101 |
| W. Va. | 9 | 10 | 111 | 67 | 61 | 91 | 76 | 71 | 93 |
| N. C. | 235 | 266 | 113 | 1,283 | 1,346 | 105 | 1,518 | 1,612 | 106 |
| S. C. | 74 | 76 | 103 | 397 | 400 | 101 | 471 | 476 | 101 |
| Ga. | 239 | 267 | 112 | 1,409 | 1,513 | 107 | 1,648 | 1,780 | 108 |
| Fla. | 59 | 63 | 107 | 289 | 268 | 93 | 348 | 331 | 95 |
| Ky. | 229 | 231 | 101 | 1,202 | 1,214 | 101 | 1,431 | 1,445 | 101 |
| Tenn. | 180 | 171 | 95 | 849 | 755 | 89 | 1,029 | 926 | 90 |
| Ala. | 162 | 142 | 88 | 848 | 807 | 95 | 1,010 | 949 | 94 |
| Miss. | 81 | 83 | 102 | 441 | 444 | 101 | 522 | 527 | 101 |
| Ark. | 56 | 55 | 98 | 235 | 233 | 99 | 291 | 288 | 99 |
| La. | 45 | 51 | 113 | 171 | 182 | 106 | 216 | 233 | 108 |
| Okla. | 60 | 64 | 107 | 339 | 311 | 92 | 399 | 375 | 94 |
| Texas | 173 | 163 | 94 | 847 | 796 | 94 | 1,020 | 959 | 94 |
| Mont. | 30 | 27 | 90 | 147 | 134 | 91 | 177 | 161 | 91 |
| Idaho | 17 | 17 | 100 | 101 | 101 | 100 | 118 | 118 | 100 |
| Wyo. | 5 | 5 | 100 | 24 | 24 | 100 | 29 | 29 | 100 |
| Colo. | 36 | 39 | 108 | 210 | 232 | 110 | 246 | 271 | 110 |
| N. Mex. | 9 | 9 | 100 | 39 | 39 | 100 | 48 | 48 | 100 |
| Ariz. | 8 | 9 | 112 | 47 | 52 | 111 | 55 | 61 | 111 |
| Utah | 9 | 8 | 89 | 47 | 48 | 102 | 56 | 56 | 100 |
| Nev. | 1 | 1.1 | 110 | 10 | 8.3 | 83 | 11 | 9.4 | 85 |
| Wash. | 14 | 13 | 93 | 73 | 77 | 105 | 87 | 90 | 103 |
| Oreg. | 17 | 17 | 100 | 101 | 101 | 100 | 118 | 118 | 100 |
| Calif. | 27 | 23 | 85 | 154 | 142 | 92 | 181 | 165 | 91 |
| 48 States | 9,427 | 8,944 | 95 | 51,140 | 47,741 | 93 | 60,567 | 56,685 | 94 |
| Alaska | .3 | .2 | 67 | .8 | .9 | 112 | 1.1 | 1.1 | 100 |
| Hawaii | 10 | 9 | 90 | 54 | 48 | 89 | 64 | 57 | 89 |
| U. S. | 9,437 | 8,953 | 95 | 51,195 | 47,790 | 93 | 60,632 | 56,743 | 94 |

| Market hogs and pigs: Number on farms by weight groups, December 1, 1968 and 1969 | | | | | | | | | | |
|---|---------------|--------|-------------|--------|--------------|-------|--------------|-------|-------------------|-------|
| State | Under 60 lbs. | | 60-119 lbs. | | 120-179 lbs. | | 180-219 lbs. | | 220 lbs. and over | |
| | 1968 | 1969 | 1968 | 1969 | 1968 | 1969 | 1968 | 1969 | 1968 | 1969 |
| | 1,000 head | | | | | | | | | |
| Maine | 3 | 4 | 2 | 2 | 2 | 1 | 1 | 1 | 1 | 1 |
| N.H. | 4 | 4 | 4 | 3 | 2 | 2 | 2 | 2 | 1 | 1 |
| Vt. | 1.7 | 2.5 | 1.2 | 1.4 | 1.0 | .7 | .7 | .7 | .6 | .4 |
| Mass. | 15 | 26 | 32 | 22 | 15 | 15 | 14 | 9 | 7 | 5 |
| R.I. | 3.5 | 5 | 2.1 | 2 | 1.1 | 1 | .8 | 1 | .6 | -- |
| Conn. | 3.2 | 3 | 2.4 | 2 | 1.7 | 2 | 1.4 | 1 | .4 | -- |
| N.Y. | 35 | 32 | 18 | 25 | 18 | 15 | 10 | 13 | 7 | 4 |
| N.J. | 29 | 22 | 37 | 29 | 24 | 27 | 15 | 18 | 10 | 12 |
| Pa. | 186 | 182 | 119 | 144 | 90 | 101 | 52 | 69 | 29 | 37 |
| Ohio | 866 | 857 | 666 | 660 | 422 | 418 | 222 | 220 | 45 | 44 |
| Ind. | 1,210 | 1,252 | 1,140 | 1,155 | 1,008 | 920 | 434 | 509 | 86 | 78 |
| Ill. | 2,135 | 2,060 | 1,794 | 1,531 | 1,268 | 1,197 | 804 | 613 | 186 | 167 |
| Mich. | 175 | 194 | 124 | 164 | 119 | 140 | 82 | 77 | 15 | 12 |
| Wis. | 551 | 541 | 377 | 360 | 305 | 284 | 181 | 166 | 36 | 35 |
| Minn. | 959 | 882 | 872 | 787 | 550 | 539 | 347 | 339 | 93 | 84 |
| Iowa | 4,461 | 4,018 | 3,462 | 3,087 | 2,863 | 2,388 | 1,931 | 1,666 | 599 | 489 |
| Mo. | 1,465 | 1,304 | 1,041 | 969 | 752 | 705 | 424 | 388 | 173 | 159 |
| N. Dak. | 78 | 69 | 57 | 64 | 60 | 56 | 52 | 51 | 13 | 15 |
| S. Dak. | 549 | 493 | 374 | 330 | 290 | 234 | 221 | 220 | 91 | 96 |
| Nebr. | 1,069 | 959 | 699 | 624 | 494 | 420 | 343 | 288 | 137 | 108 |
| Kans. | 616 | 527 | 368 | 389 | 293 | 257 | 165 | 166 | 60 | 49 |
| Del. | 14 | 13 | 9 | 9 | 6 | 7 | 4 | 4 | 1 | 1 |
| Md. | 66 | 62 | 47 | 46 | 29 | 30 | 17 | 16 | 9 | 9 |
| Va. | 205 | 186 | 134 | 138 | 89 | 93 | 49 | 56 | 53 | 59 |
| W. Va. | 29 | 26 | 12 | 13 | 10 | 7 | 7 | 5 | 9 | 10 |
| N. C. | 545 | 538 | 333 | 357 | 224 | 242 | 105 | 121 | 76 | 88 |
| S. C. | 160 | 160 | 115 | 108 | 77 | 80 | 28 | 32 | 17 | 20 |
| Ga. | 578 | 635 | 408 | 439 | 296 | 303 | 99 | 106 | 28 | 30 |
| Fla. | 118 | 118 | 87 | 72 | 51 | 51 | 27 | 19 | 6 | 8 |
| Ky. | 469 | 509 | 307 | 297 | 240 | 231 | 144 | 134 | 42 | 43 |
| Tenn. | 346 | 338 | 186 | 156 | 155 | 124 | 81 | 67 | 81 | 70 |
| Ala. | 313 | 323 | 263 | 234 | 170 | 153 | 68 | 73 | 34 | 24 |
| Miss. | 185 | 182 | 93 | 102 | 88 | 85 | 53 | 53 | 22 | 22 |
| Ark. | 102 | 111 | 52 | 51 | 40 | 37 | 31 | 20 | 10 | 14 |
| La. | 76 | 81 | 51 | 47 | 29 | 31 | 10 | 13 | 5 | 10 |
| Okla. | 139 | 132 | 94 | 87 | 66 | 55 | 32 | 28 | 8 | 9 |
| Texas | 280 | 278 | 254 | 239 | 169 | 167 | 102 | 80 | 42 | 32 |
| Mont. | 52 | 50 | 34 | 34 | 35 | 28 | 21 | 17 | 5 | 5 |
| Idaho | 40 | 40 | 26 | 27 | 22 | 22 | 11 | 10 | 2 | 2 |
| Wyo. | 9 | 11 | 8 | 6 | 4 | 4 | 2 | 2 | 1 | 1 |
| Colo. | 74 | 91 | 50 | 53 | 48 | 49 | 31 | 30 | 7 | 9 |
| N. Mex. | 17 | 18 | 10 | 10 | 6 | 6 | 4 | 4 | 2 | 1 |
| Ariz. | 18 | 18 | 10 | 12 | 9 | 11 | 9 | 8 | 1 | 3 |
| Utah | 20 | 22 | 13 | 11 | 9 | 8 | 4 | 6 | 1 | 1 |
| Nev. | 4 | 3.3 | 3 | 2.1 | 2 | 1.6 | 1 | 1.0 | -- | .3 |
| Wash. | 25 | 23 | 22 | 22 | 15 | 19 | 9 | 11 | 2 | 2 |
| Oreg. | 31 | 35 | 30 | 31 | 24 | 22 | 13 | 11 | 3 | 2 |
| Calif. | 65 | 49 | 39 | 40 | 25 | 26 | 17 | 21 | 8 | 6 |
| 48 | | | | | | | | | | |
| States | 18,394 | 17,489 | 13,882 | 12,993 | 10,517 | 9,615 | 6,282 | 5,766 | 2,065 | 1,878 |
| Alaska | .30 | .40 | .2 | .14 | .2 | .16 | 1/ .1 | .13 | -- | .07 |
| Hawaii | 24 | 21 | 17 | 17 | 10 | 9 | 2 | 1 | 1 | -- |
| U.S. | 18,419 | 17,511 | 13,899 | 13,010 | 10,527 | 9,624 | 6,284 | 5,767 | 2,066 | 1,878 |

Hogs and Pigs: Number on farms, breeding, market and total, June 1, 1968 and 1969

| State | Breeding | | | Market | | | Total | | |
|------------|------------|---------|--------------|---------|------------|--------------|------------|---------|--------------|
| | 1969 | | | 1969 | | | 1969 | | |
| | 1968 | Number | As % of 1968 | 1968 | Number | As % of 1968 | 1968 | Number | As % of 1968 |
| | 1,000 head | Percent | 1,000 head | Percent | 1,000 head | Percent | 1,000 head | Percent | |
| Maine | 2 | 2.0 | 100 | 8 | 6.6 | 82 | 10 | 8.6 | 86 |
| N. H. | 2 | 2 | 100 | 11 | 12 | 109 | 13 | 14 | 108 |
| Vt. | .8 | .7 | 88 | 4.9 | 4.4 | 90 | 5.7 | 5.1 | 89 |
| Mass. | 12 | 12 | 100 | 82 | 77 | 94 | 94 | 89 | 95 |
| R. I. | 1.1 | 1.3 | 118 | 8.2 | 8.6 | 105 | 9.3 | 9.9 | 106 |
| Conn. | 1 | 2 | 200 | 11 | 9 | 82 | 12 | 11 | 92 |
| N. Y. | 20 | 20 | 100 | 90 | 95 | 106 | 110 | 115 | 105 |
| N. J. | 12 | 12 | 100 | 117 | 121 | 103 | 129 | 133 | 103 |
| Pa. | 68 | 77 | 113 | 419 | 473 | 113 | 487 | 550 | 113 |
| Ohio | 382 | 395 | 103 | 2,167 | 2,154 | 99 | 2,549 | 2,549 | 100 |
| Ind. | 647 | 660 | 102 | 3,665 | 3,738 | 102 | 4,312 | 4,398 | 102 |
| Ill. | 1,109 | 1,023 | 92 | 5,997 | 5,372 | 90 | 7,106 | 6,395 | 90 |
| Mich. | 103 | 109 | 106 | 501 | 525 | 105 | 604 | 634 | 105 |
| Wis. | 313 | 322 | 103 | 1,475 | 1,466 | 99 | 1,788 | 1,788 | 100 |
| Minn. | 553 | 547 | 99 | 3,082 | 2,870 | 93 | 3,635 | 3,417 | 94 |
| Iowa | 2,223 | 2,199 | 99 | 13,109 | 12,366 | 94 | 15,332 | 14,565 | 95 |
| Mo. | 668 | 659 | 99 | 3,670 | 3,592 | 98 | 4,338 | 4,251 | 98 |
| N. Dak. | 60 | 53 | 88 | 337 | 328 | 97 | 397 | 381 | 96 |
| S. Dak. | 333 | 331 | 99 | 1,961 | 1,802 | 92 | 2,294 | 2,133 | 93 |
| Nebr. | 516 | 547 | 106 | 3,042 | 2,869 | 94 | 3,558 | 3,416 | 96 |
| Kans. | 243 | 261 | 107 | 1,494 | 1,476 | 99 | 1,737 | 1,737 | 100 |
| Del. | 6 | 7 | 117 | 29 | 30 | 103 | 35 | 37 | 106 |
| Md. | 27 | 29 | 107 | 133 | 139 | 105 | 160 | 168 | 105 |
| Va. | 91 | 95 | 104 | 477 | 501 | 105 | 568 | 596 | 105 |
| W. Va. | 12 | 12 | 100 | 71 | 65 | 92 | 83 | 77 | 93 |
| N. C. | 329 | 353 | 107 | 1,521 | 1,663 | 109 | 1,850 | 2,016 | 109 |
| S. C. | 76 | 86 | 113 | 396 | 433 | 109 | 472 | 519 | 110 |
| Ga. | 225 | 245 | 109 | 1,383 | 1,443 | 104 | 1,608 | 1,688 | 105 |
| Fla. | 56 | 63 | 112 | 255 | 285 | 112 | 311 | 348 | 112 |
| Ky. | 230 | 228 | 99 | 1,209 | 1,240 | 103 | 1,439 | 1,468 | 102 |
| Tenn. | 218 | 179 | 82 | 820 | 786 | 96 | 1,038 | 965 | 93 |
| Ala. | 151 | 158 | 105 | 853 | 836 | 98 | 1,004 | 994 | 99 |
| Miss. | 82 | 83 | 101 | 466 | 454 | 97 | 548 | 537 | 98 |
| Ark. | 48 | 52 | 108 | 221 | 206 | 93 | 269 | 258 | 96 |
| La. | 44 | 43 | 98 | 175 | 154 | 88 | 219 | 197 | 90 |
| Okla. | 61 | 60 | 98 | 323 | 278 | 86 | 384 | 338 | 88 |
| Texas | 150 | 133 | 89 | 735 | 752 | 102 | 885 | 885 | 100 |
| Mont. | 27 | 27 | 100 | 150 | 143 | 95 | 177 | 170 | 96 |
| Idaho | 19 | 18 | 95 | 98 | 95 | 97 | 117 | 113 | 97 |
| Wyo. | 6 | 5 | 83 | 24 | 23 | 96 | 30 | 28 | 93 |
| Colo. | 35 | 39 | 111 | 201 | 223 | 111 | 236 | 262 | 111 |
| N. Mex. | 10 | 10 | 100 | 40 | 46 | 115 | 50 | 56 | 112 |
| Ariz. | 9 | 9 | 100 | 45 | 51 | 113 | 54 | 60 | 111 |
| Utah | 10 | 10 | 100 | 41 | 41 | 100 | 51 | 51 | 100 |
| Nev. | 1 | 1.0 | 100 | 9 | 5.3 | 59 | 10 | 6.3 | 63 |
| Wash. | 13 | 14 | 108 | 72 | 76 | 106 | 85 | 90 | 106 |
| Oreg. | 15 | 17 | 113 | 103 | 99 | 96 | 118 | 116 | 98 |
| Calif. | 26 | 27 | 104 | 143 | 150 | 105 | 169 | 177 | 105 |
| 48 States: | 9,246 | 9,238 | 100 | 51,244 | 49,582 | 97 | 60,490 | 58,820 | 97 |
| Alaska | .3 | .3 | 100 | .9 | 1.0 | 111 | 1.2 | 1.3 | 108 |
| Hawaii | 10 | 10 | 100 | 56 | 48 | 86 | 66 | 58 | 88 |
| U. S. | 9,256 | 9,248 | 100 | 51,301 | 49,631 | 97 | 60,557 | 58,879 | 97 |

Market hogs and pigs: Number on farms, by weight groups, June 1, 1968 and 1969

| State | Under 60 lbs. | | 60-119 lbs. | | 120-179 lbs. | | 180-219 lbs. | | 220 lbs. and over | |
|---------|---------------|--------|-------------|--------|--------------|-------|--------------|-------|-------------------|-------|
| | 1968 | 1969 | 1968 | 1969 | 1968 | 1969 | 1968 | 1969 | 1968 | 1969 |
| | 1,000 head | | | | | | | | | |
| Maine | 4 | 2.7 | 2 | 1.4 | 1 | 1.3 | 1 | 0.9 | --- | 0.3 |
| N. H. | 5 | 4 | 2 | 4 | 2 | 2 | 1 | 1 | 1 | 1 |
| Vt. | 2.4 | 2.0 | .9 | .9 | .8 | .8 | .5 | .5 | .3 | .2 |
| Mass. | 33 | 26 | 20 | 19 | 13 | 17 | 11 | 9 | 5 | 6 |
| R. I. | 3.0 | 3.6 | 2.5 | 2.7 | 1.4 | 1.1 | .7 | .9 | .6 | .3 |
| Conn. | 3 | 4 | 3 | 2 | 3 | 2 | 2 | 1 | --- | --- |
| N. Y. | 37 | 39 | 22 | 22 | 19 | 17 | 8 | 13 | 4 | 4 |
| N. J. | 32 | 33 | 26 | 32 | 26 | 24 | 22 | 22 | 11 | 10 |
| Pa. | 180 | 204 | 105 | 118 | 80 | 90 | 42 | 47 | 12 | 14 |
| Ohio | 949 | 948 | 598 | 593 | 412 | 409 | 176 | 172 | 32 | 32 |
| Ind. | 1,576 | 1,525 | 935 | 1,028 | 751 | 755 | 330 | 355 | 73 | 75 |
| Ill. | 2,879 | 2,445 | 1,439 | 1,370 | 1,019 | 886 | 492 | 510 | 168 | 161 |
| Mich. | 253 | 273 | 112 | 129 | 78 | 68 | 47 | 47 | 11 | 8 |
| Wis. | 914 | 895 | 270 | 271 | 170 | 183 | 90 | 88 | 31 | 29 |
| Minn. | 1,710 | 1,535 | 678 | 674 | 370 | 359 | 247 | 230 | 77 | 72 |
| Iowa | 7,079 | 6,307 | 2,884 | 2,844 | 1,704 | 1,731 | 1,009 | 1,113 | 433 | 371 |
| Mo. | 1,908 | 1,724 | 734 | 772 | 569 | 611 | 330 | 359 | 129 | 126 |
| N. Dak. | 242 | 210 | 51 | 61 | 24 | 24 | 10 | 18 | 10 | 15 |
| S. Dak. | 1,284 | 1,090 | 353 | 361 | 167 | 180 | 98 | 108 | 59 | 63 |
| Nebr. | 1,734 | 1,463 | 639 | 674 | 380 | 402 | 213 | 244 | 76 | 86 |
| Kans. | 672 | 657 | 389 | 383 | 239 | 244 | 157 | 155 | 37 | 37 |
| Del. | 12 | 12 | 7 | 8 | 6 | 6 | 3 | 3 | 1 | 1 |
| Md. | 65 | 67 | 31 | 35 | 21 | 20 | 12 | 14 | 4 | 3 |
| Va. | 215 | 216 | 129 | 135 | 81 | 95 | 38 | 45 | 14 | 10 |
| W. Va. | 38 | 33 | 14 | 14 | 11 | 10 | 5 | 5 | 3 | 3 |
| N. C. | 671 | 739 | 394 | 466 | 281 | 289 | 137 | 126 | 38 | 43 |
| S. C. | 170 | 199 | 95 | 109 | 79 | 75 | 36 | 35 | 16 | 15 |
| Ga. | 595 | 678 | 387 | 404 | 276 | 260 | 97 | 79 | 28 | 22 |
| Fla. | 107 | 151 | 71 | 74 | 38 | 37 | 26 | 14 | 13 | 9 |
| Ky. | 568 | 608 | 302 | 285 | 194 | 198 | 121 | 112 | 24 | 37 |
| Tenn. | 361 | 362 | 221 | 196 | 148 | 141 | 74 | 71 | 16 | 16 |
| Ala. | 401 | 359 | 213 | 226 | 145 | 159 | 68 | 75 | 26 | 17 |
| Miss. | 210 | 204 | 130 | 122 | 70 | 82 | 42 | 32 | 14 | 14 |
| Ark. | 122 | 113 | 46 | 41 | 32 | 31 | 15 | 16 | 6 | 5 |
| La. | 100 | 83 | 49 | 43 | 14 | 14 | 7 | 6 | 5 | 8 |
| Okla. | 133 | 131 | 90 | 75 | 61 | 44 | 33 | 24 | 6 | 4 |
| Texas | 316 | 301 | 206 | 195 | 125 | 143 | 73 | 83 | 15 | 30 |
| Mont. | 68 | 72 | 36 | 33 | 21 | 18 | 15 | 13 | 10 | 7 |
| Idaho | 47 | 44 | 24 | 23 | 17 | 16 | 9 | 10 | 1 | 2 |
| Wyo. | 15 | 12 | 5 | 4 | 2 | 3 | 1 | 3 | 1 | 1 |
| Colo. | 91 | 97 | 44 | 57 | 40 | 42 | 21 | 21 | 5 | 6 |
| N. Mex. | 18 | 23 | 11 | 9 | 7 | 7 | 3 | 5 | 1 | 2 |
| Ariz. | 18 | 21 | 10 | 11 | 9 | 9 | 6 | 8 | 2 | 2 |
| Utah | 25 | 22 | 5 | 9 | 4 | 5 | 5 | 4 | 2 | 1 |
| Nev. | 4 | 2.7 | 3 | 1.4 | 1 | .7 | 1 | .4 | --- | .1 |
| Wash. | 30 | 28 | 20 | 21 | 13 | 17 | 7 | 7 | 2 | 3 |
| Oreg. | 42 | 36 | 25 | 26 | 24 | 21 | 10 | 13 | 2 | 3 |
| Calif. | 51 | 54 | 42 | 39 | 29 | 33 | 17 | 20 | 4 | 4 |
| States | 25,993 | 24,058 | 11,875 | 12,023 | 7,778 | 7,783 | 4,169 | 4,339 | 1,429 | 1,379 |
| Alaska | .46 | .59 | .18 | .21 | .14 | .15 | .10 | .04 | .02 | .01 |
| Hawaii | 27 | 24 | 18 | 14 | 10 | 9 | 1 | 1 | --- | --- |
| U. S. | 26,021 | 24,083 | 11,893 | 12,037 | 7,788 | 7,792 | 4,170 | 4,340 | 1,429 | 1,379 |

| Farrowings: Number of sows, pigs per litter and pig crop, December 1/-May, 1967-70 | | | | | | | | | | |
|--|----------------|-------|-------|---------|-----------------|------|------|------------|--------|--------|
| State | Sows farrowing | | | | Pigs per litter | | | Pig crop | | |
| | 1967 | 1968 | 1969 | 1970 2/ | As % of: | | 1967 | 1968 | 1969 | |
| | Number | | | | 1969 | 1968 | 1969 | Number | | |
| | 1,000 head | | | | Percent | | | 1,000 head | | |
| Maine | 1.2 | 1.1 | 1.0 | 1.2 | 120 | 6.5 | 6.4 | 7.7 | 7.2 | 6.4 |
| N. H. | 1.3 | 1.2 | 1.2 | 1.4 | 117 | 7.0 | 7.2 | 9.4 | 8.4 | 8.6 |
| Vt. | .8 | .6 | .5 | .6 | 120 | 7.5 | 7.8 | 5.8 | 4.5 | 3.9 |
| Mass. | 8.9 | 8.2 | 7.5 | 7.5 | 100 | 5.8 | 6.2 | 56 | 48 | 46 |
| R. I. | .7 | .7 | .9 | 1.0 | 111 | 6.3 | 6.3 | 4.2 | 4.4 | 5.7 |
| Conn. | 1.3 | 1.2 | 1.1 | 1.0 | 91 | 5.9 | 6.0 | 8.3 | 7.1 | 6.6 |
| N. Y. | 9.5 | 10 | 11 | 10 | 91 | 7.6 | 7.7 | 72 | 76 | 85 |
| N. J. | 8.0 | 8.3 | 8.4 | 8.5 | 101 | 6.3 | 6.0 | 47 | 52 | 50 |
| Pa. | 53 | 53 | 57 | 62 | 109 | 7.7 | 8.0 | 408 | 408 | 456 |
| Ohio | 271 | 261 | 255 | 265 | 104 | 7.37 | 7.47 | 1,970 | 1,924 | 1,904 |
| Ind. | 454 | 454 | 440 | 453 | 103 | 7.40 | 7.55 | 3,386 | 3,360 | 3,322 |
| Ill. | 815 | 815 | 734 | 776 | 106 | 7.14 | 6.92 | 5,986 | 5,817 | 5,080 |
| Mich. | 63 | 65 | 68 | 76 | 112 | 7.42 | 7.56 | 475 | 482 | 514 |
| Wis. | 232 | 229 | 224 | 222 | 99 | 7.76 | 7.57 | 1,702 | 1,776 | 1,696 |
| Minn. | 404 | 420 | 387 | 402 | 104 | 7.65 | 7.44 | 3,069 | 3,212 | 2,879 |
| Iowa | 1,641 | 1,635 | 1,508 | 1,529 | 101 | 7.44 | 7.36 | 11,858 | 12,166 | 11,094 |
| Mo. | 479 | 489 | 474 | 468 | 99 | 7.36 | 7.21 | 3,564 | 3,599 | 3,419 |
| N. Dak. | 52 | 45 | 41 | 43 | 105 | 7.65 | 7.50 | 391 | 344 | 308 |
| S. Dak. | 250 | 264 | 244 | 253 | 104 | 7.52 | 7.31 | 1,830 | 1,986 | 1,783 |
| Nebr. | 361 | 390 | 380 | 389 | 102 | 7.41 | 7.33 | 2,684 | 2,889 | 2,786 |
| Kans. | 168 | 178 | 182 | 192 | 105 | 7.55 | 7.69 | 1,265 | 1,344 | 1,399 |
| Del. | 3.7 | 3.4 | 3.5 | 3.8 | 108 | 7.0 | 7.3 | 26 | 24 | 26 |
| Md. | 18 | 16 | 17 | 18 | 106 | 7.5 | 7.3 | 133 | 120 | 124 |
| Va. | 54 | 52 | 55 | 56 | 102 | 7.3 | 7.4 | 394 | 380 | 407 |
| W. Va. | 7.3 | 7.2 | 6.8 | 6.6 | 97 | 7.7 | 7.6 | 54 | 55 | 52 |
| N. C. | 200 | 212 | 225 | 245 | 109 | 7.5 | 7.8 | 1,520 | 1,590 | 1,755 |
| S. C. | 51 | 50 | 53 | 54 | 102 | 7.0 | 7.3 | 357 | 350 | 387 |
| Ga. | 176 | 181 | 188 | 211 | 112 | 7.1 | 7.3 | 1,250 | 1,285 | 1,372 |
| Fla. | 34 | 34 | 36 | 37 | 103 | 6.8 | 7.1 | 235 | 231 | 256 |
| Ky. | 155 | 167 | 167 | 174 | 104 | 7.3 | 7.5 | 1,132 | 1,219 | 1,252 |
| Tenn. | 125 | 135 | 116 | 121 | 104 | 7.0 | 7.6 | 925 | 945 | 882 |
| Ala. | 105 | 110 | 110 | 110 | 100 | 7.2 | 7.3 | 756 | 792 | 803 |
| Miss. | 55 | 58 | 58 | 60 | 103 | 6.3 | 6.9 | 374 | 365 | 400 |
| Ark. | 32 | 35 | 33 | 33 | 100 | 7.1 | 7.4 | 230 | 248 | 244 |
| La. | 25 | 24 | 21 | 22 | 105 | 6.5 | 6.8 | 162 | 156 | 143 |
| Okla. | 43 | 46 | 42 | 41 | 98 | 7.3 | 7.3 | 310 | 336 | 307 |
| Texas | 90 | 90 | 95 | 95 | 100 | 7.1 | 7.5 | 648 | 639 | 712 |
| Mont. | 19 | 18 | 18 | 18 | 100 | 7.8 | 7.4 | 146 | 140 | 133 |
| Idaho | 13 | 13 | 12 | 12 | 100 | 8.0 | 7.9 | 98 | 104 | 95 |
| Wyo. | 3.0 | 3.4 | 3.1 | 3.4 | 110 | 7.1 | 7.1 | 21 | 24 | 22 |
| Colo. | 25 | 27 | 28 | 29 | 105 | 7.2 | 7.8 | 175 | 194 | 218 |
| N. Mex. | 4.9 | 5.4 | 6.5 | 6.8 | 105 | 7.4 | 7.1 | 35 | 40 | 46 |
| Ariz. | 4.4 | 5.5 | 6.6 | 6.9 | 104 | 8.1 | 8.2 | 35 | 45 | 54 |
| Utah | 5.5 | 5.5 | 5.5 | 5.2 | 95 | 7.5 | 6.8 | 41 | 41 | 37 |
| Nev. | 1.0 | 1.2 | .8 | 1.0 | 125 | 6.4 | 5.9 | 6.3 | 7.7 | 4.7 |
| Wash. | 7.5 | 8.0 | 8.5 | 8.5 | 100 | 8.3 | 8.2 | 62 | 66 | 70 |
| Oreg. | 12 | 11 | 11 | 11 | 100 | 8.5 | 8.2 | 101 | 94 | 90 |
| Calif. | 20 | 15 | 14 | 13 | 93 | 6.7 | 6.7 | 139 | 100 | 94 |
| 48 States | 6,564 | 6,663 | 6,366 | 6,563 | 103 | 7.37 | 7.36 | 48,164 | 49,105 | 46,838 |
| Alaska | .14 | .13 | .14 | .11 | 79 | 6.0 | 6.5 | .80 | .78 | .91 |
| Hawaii | 5.7 | 6.0 | 5.4 | 5.2 | 96 | 6.67 | 7.04 | 40 | 40 | 38 |
| U. S. | 6,570 | 6,669 | 6,372 | 6,568 | 103 | 7.37 | 7.36 | 48,205 | 49,146 | 46,877 |

1/ December preceding year. 2/ Intentions.

Farrowings: Number of sows, by quarters, December 1/-February and March-May
1968 and 1969

| State | December - February | | | March - May | | |
|-----------|---------------------|-------|----------------------|-------------|-------|----------------------|
| | 1968 | 1969 | 1969 as % of 1968 | 1968 | 1969 | 1969 as % of 1968 |
| | 1,000 head | | Percent | 1,000 head | | Percent |
| Maine | 0.3 | 0.2 | 67 | 0.8 | 0.8 | 100 |
| N. H. | .2 | .2 | 100 | 1.0 | 1.0 | 100 |
| Vt. | .2 | .1 | 50 | .4 | .4 | 100 |
| Mass. | 2.1 | 2.1 | 100 | 6.1 | 5.4 | 89 |
| R. I. | .3 | .3 | 100 | .4 | .6 | 150 |
| Conn. | .5 | .4 | 80 | .7 | .7 | 100 |
| N. Y. | 4 | 5 | 125 | 6 | 6 | 100 |
| N. J. | 3.4 | 3.8 | 112 | 4.9 | 4.6 | 94 |
| Pa. | 24 | 27 | 112 | 29 | 30 | 103 |
| Ohio | 115 | 115 | 100 | 146 | 140 | 96 |
| Ind. | 219 | 210 | 96 | 235 | 230 | 98 |
| Ill. | 307 | 292 | 95 | 508 | 442 | 87 |
| Mich. | 29 | 31 | 107 | 36 | 37 | 103 |
| Wis. | 80 | 74 | 93 | 149 | 150 | 101 |
| Minn. | 141 | 141 | 100 | 279 | 246 | 88 |
| Iowa | 480 | 480 | 100 | 1,155 | 1,028 | 89 |
| Mo. | 190 | 196 | 103 | 299 | 278 | 93 |
| N. Dak. | 9 | 13 | 144 | 36 | 28 | 78 |
| S. Dak. | 58 | 67 | 116 | 206 | 177 | 86 |
| Nebr. | 125 | 131 | 105 | 265 | 249 | 94 |
| Kans. | 74 | 76 | 103 | 104 | 106 | 102 |
| Del. | 1.5 | 1.9 | 127 | 1.9 | 1.6 | 84 |
| Md. | 7.7 | 8 | 104 | 8.3 | 9 | 108 |
| Va. | 27 | 28 | 104 | 25 | 27 | 108 |
| W. Va. | 2.4 | 2.2 | 92 | 4.8 | 4.6 | 96 |
| N. C. | 112 | 122 | 109 | 100 | 103 | 103 |
| S. C. | 27 | 27 | 100 | 23 | 26 | 113 |
| Ga. | 105 | 103 | 98 | 76 | 85 | 112 |
| Fla. | 17 | 19 | 112 | 17 | 17 | 100 |
| Ky. | 79 | 92 | 116 | 88 | 75 | 85 |
| Tenn. | 71 | 58 | 82 | 64 | 58 | 91 |
| Ala. | 60 | 60 | 100 | 50 | 50 | 100 |
| Miss. | 29 | 31 | 107 | 29 | 27 | 93 |
| Ark. | 19 | 16 | 84 | 16 | 17 | 106 |
| La. | 13 | 12 | 92 | 11 | 9 | 82 |
| Okla. | 23 | 20 | 87 | 23 | 22 | 96 |
| Texas | 47 | 48 | 102 | 43 | 47 | 109 |
| Mont. | 7 | 8 | 114 | 11 | 10 | 91 |
| Idaho | 5 | 6 | 120 | 8 | 6 | 75 |
| Wyo. | 1.1 | 1.1 | 100 | 2.3 | 2.0 | 87 |
| Colo. | 12 | 13 | 108 | 15 | 15 | 100 |
| N. Mex. | 2.8 | 3.2 | 114 | 2.6 | 3.3 | 127 |
| Ariz. | 2.5 | 3.5 | 140 | 3.0 | 3.1 | 103 |
| Utah | 2.4 | 2.4 | 100 | 3.1 | 3.1 | 100 |
| Nev. | .4 | .3 | 75 | .8 | .5 | 62 |
| Wash. | 3.8 | 4.3 | 113 | 4.2 | 4.2 | 100 |
| Oreg. | 6 | 6 | 100 | 5 | 5 | 100 |
| Calif. | 8 | 7 | 88 | 7 | 7 | 100 |
| 48 States | 2,554 | 2,568 | 101 | 4,109 | 3,798 | 92 |
| Alaska | .05 | .05 | 100 | .08 | .09 | 112 |
| Hawaii | 3.0 | 2.7 | 89 | 3.0 | 2.7 | 90 |
| U. S. | 2,557 | 2,571 | 101 | 4,112 | 3,801 | 92 |

1/ December preceding year.

HOGS AND PIGS, December 1969

Farrowings: Number of sows, pigs per litter and pig crop, June-November 1967-69

| State | Sows farrowing | | | | Pigs per litter | | Pig crop | | | |
|-----------|----------------|-------|---------|--------------|-----------------|------|------------|--------|---------|--------------|
| | 1967 | 1968 | 1969 | | 1968 | 1969 | 1967 | 1968 | 1969 | |
| | | | Number | As % of 1968 | | | | | Number | As % of 1968 |
| | 1,000 head | | Percent | | Number | | 1,000 head | | Percent | |
| Maine | 1.1 | 1.1 | 1.1 | 100 | 8.0 | 7.5 | 7.5 | 8.8 | 8.2 | 93 |
| N. H. | 1.4 | 1.5 | 1.7 | 113 | 6.8 | 5.4 | 10 | 10 | 9.2 | 92 |
| Vt. | .9 | .8 | .9 | 112 | 7.5 | 7.5 | 6.4 | 6.0 | 6.8 | 113 |
| Mass. | 8.0 | 8.5 | 8.0 | 94 | 6.4 | 6.9 | 51 | 54 | 55 | 102 |
| R. I. | .7 | .8 | .9 | 113 | 5.5 | 7.2 | 4.6 | 4.4 | 6.5 | 148 |
| Conn. | 1.2 | 1.0 | .9 | 90 | 6.4 | 6.5 | 7.6 | 6.4 | 5.8 | 91 |
| N. Y. | 9.1 | 10 | 9.5 | 95 | 7.5 | 7.7 | 72 | 75 | 73 | 97 |
| N. J. | 7.5 | 7.2 | 6.7 | 93 | 6.3 | 5.7 | 45 | 45 | 38 | 84 |
| Pa. | 45 | 50 | 53 | 106 | 7.5 | 7.7 | 351 | 375 | 408 | 109 |
| Ohio | 263 | 267 | 264 | 99 | 7.47 | 7.45 | 1,979 | 1,994 | 1,967 | 99 |
| Ind. | 438 | 450 | 425 | 94 | 7.36 | 7.68 | 3,310 | 3,314 | 3,265 | 99 |
| Ill. | 799 | 807 | 729 | 90 | 7.15 | 7.10 | 5,840 | 5,767 | 5,175 | 90 |
| Mich. | 75 | 70 | 77 | 110 | 7.40 | 7.40 | 564 | 518 | 570 | 110 |
| Wis. | 216 | 219 | 211 | 96 | 7.76 | 7.81 | 1,640 | 1,699 | 1,648 | 97 |
| Minn. | 325 | 349 | 336 | 96 | 7.44 | 7.38 | 2,440 | 2,597 | 2,479 | 95 |
| Iowa | 1,345 | 1,425 | 1,261 | 88 | 7.40 | 7.17 | 9,853 | 10,552 | 9,047 | 86 |
| Mo. | 503 | 525 | 483 | 92 | 7.25 | 7.07 | 3,678 | 3,805 | 3,414 | 90 |
| N. Dak. | 27 | 26 | 25 | 96 | 7.50 | 7.40 | 205 | 195 | 185 | 95 |
| S. Dak. | 152 | 159 | 146 | 92 | 7.45 | 7.39 | 1,097 | 1,185 | 1,079 | 91 |
| Nebr. | 292 | 319 | 288 | 90 | 7.52 | 7.44 | 2,168 | 2,399 | 2,143 | 89 |
| Kans. | 159 | 172 | 161 | 94 | 7.66 | 7.68 | 1,198 | 1,317 | 1,237 | 94 |
| Del. | 4.4 | 4.7 | 5.2 | 111 | 7.1 | 7.5 | 33 | 33 | 39 | 118 |
| Md. | 19 | 20 | 20 | 100 | 7.3 | 6.7 | 141 | 146 | 134 | 92 |
| Va. | 55 | 57 | 55 | 96 | 7.5 | 7.7 | 418 | 428 | 424 | 99 |
| W. Va. | 8.0 | 7.7 | 7.3 | 95 | 7.7 | 7.9 | 62 | 59 | 58 | 98 |
| N. C. | 145 | 151 | 157 | 104 | 7.5 | 7.5 | 1,102 | 1,132 | 1,178 | 104 |
| S. C. | 43 | 45 | 45 | 100 | 7.1 | 7.1 | 301 | 320 | 320 | 100 |
| Ga. | 152 | 161 | 171 | 106 | 7.2 | 7.3 | 1,094 | 1,159 | 1,248 | 108 |
| Fla. | 29 | 36 | 35 | 97 | 6.9 | 6.6 | 206 | 248 | 231 | 93 |
| Ky. | 155 | 152 | 149 | 98 | 7.3 | 7.7 | 1,162 | 1,110 | 1,147 | 103 |
| Tenn. | 124 | 124 | 114 | 92 | 7.2 | 7.7 | 913 | 893 | 878 | 98 |
| Ala. | 95 | 102 | 98 | 96 | 7.2 | 7.3 | 684 | 734 | 715 | 97 |
| Miss. | 53 | 52 | 53 | 102 | 7.0 | 7.1 | 366 | 364 | 376 | 103 |
| Ark. | 43 | 45 | 43 | 96 | 7.0 | 7.5 | 318 | 315 | 322 | 102 |
| La. | 22 | 19 | 20 | 105 | 6.4 | 7.0 | 141 | 122 | 140 | 115 |
| Okla. | 51 | 47 | 43 | 91 | 7.2 | 7.3 | 372 | 338 | 314 | 93 |
| Texas | 113 | 114 | 106 | 93 | 7.1 | 7.4 | 802 | 809 | 784 | 97 |
| Mont. | 17 | 18 | 17 | 94 | 7.9 | 7.8 | 128 | 142 | 133 | 94 |
| Idaho | 12 | 12 | 12 | 100 | 7.9 | 8.2 | 94 | 95 | 98 | 103 |
| Wyo. | 2.3 | 2.6 | 2.9 | 112 | 7.8 | 6.9 | 17 | 20 | 20 | 100 |
| Colo. | 25 | 29 | 32 | 110 | 7.3 | 7.5 | 187 | 212 | 240 | 113 |
| N. Mex. | 4.7 | 5.6 | 6.1 | 109 | 7.5 | 7.4 | 35 | 42 | 45 | 107 |
| Ariz. | 5.2 | 6.6 | 6.6 | 100 | 7.6 | 7.8 | 42 | 50 | 51 | 102 |
| Utah | 6.5 | 6.5 | 6.0 | 92 | 7.5 | 7.9 | 46 | 49 | 47 | 96 |
| Nev. | 1.0 | 1.1 | .9 | 82 | 7.5 | 7.5 | 7.0 | 8.2 | 6.8 | 83 |
| Wash. | 8.0 | 7.4 | 9.0 | 122 | 8.4 | 7.0 | 62 | 62 | 63 | 102 |
| Oreg. | 13 | 12 | 12 | 100 | 8.5 | 8.3 | 108 | 102 | 100 | 98 |
| Calif. | 18 | 16 | 14 | 88 | 6.8 | 7.2 | 121 | 109 | 101 | 93 |
| 48 States | 5,893 | 6,123 | 5,729 | 94 | 7.35 | 7.34 | 43,499 | 45,028 | 42,032 | 93 |
| Alaska | .19 | .15 | .14 | 93 | 6.1 | 5.8 | 1.1 | .92 | .81 | 88 |
| Hawaii | 5.7 | 6.0 | 5.4 | 90 | 7.00 | 7.04 | 40 | 42 | 38 | 90 |
| U. S. | 5,899 | 6,129 | 5,735 | 94 | 7.35 | 7.34 | 43,540 | 45,071 | 42,071 | 93 |

Farrowings: Number of sows, by quarters, June-August and
September-November 1968 and 1969

| State | June - August | | | September - November | | |
|-----------|---------------|-------|----------------------|----------------------|-------|----------------------|
| | 1968 | 1969 | 1969 as % of 1968 | 1968 | 1969 | 1969 as % of 1968 |
| | 1,000 head | | Percent | 1,000 head | | Percent |
| Maine | 0.9 | 0.8 | 89 | 0.2 | 0.3 | 150 |
| N. H. | .9 | 1.2 | 133 | .6 | .5 | 83 |
| Vt. | .5 | .6 | 120 | .3 | .3 | 100 |
| Mass. | 5.7 | 4.8 | 84 | 2.8 | 3.2 | 114 |
| R. I. | .5 | .6 | 120 | .3 | .3 | 100 |
| Conn. | .4 | .4 | 100 | .6 | .5 | 83 |
| N. Y. | 5.0 | 5.0 | 100 | 5.0 | 4.5 | 90 |
| N. J. | 3.8 | 3.6 | 95 | 3.4 | 3.1 | 91 |
| Pa. | 24 | 28 | 117 | 26 | 25 | 96 |
| Ohio | 142 | 139 | 98 | 125 | 125 | 100 |
| Ind. | 262 | 241 | 92 | 188 | 184 | 98 |
| Ill. | 425 | 374 | 88 | 382 | 355 | 93 |
| Mich. | 41 | 52 | 127 | 29 | 25 | 86 |
| Wis. | 108 | 104 | 96 | 111 | 107 | 96 |
| Minn. | 190 | 190 | 100 | 159 | 146 | 92 |
| Iowa | 718 | 625 | 87 | 707 | 636 | 90 |
| Mo. | 249 | 229 | 92 | 276 | 254 | 92 |
| N. Dak. | 17 | 17 | 100 | 9 | 8 | 89 |
| S. Dak. | 68 | 61 | 90 | 91 | 85 | 93 |
| Nebr. | 134 | 122 | 91 | 185 | 166 | 90 |
| Kans. | 77 | 70 | 91 | 95 | 91 | 96 |
| Del. | 3.0 | 3.6 | 120 | 1.7 | 1.6 | 94 |
| Md. | 12 | 13 | 108 | 8 | 7 | 88 |
| Va. | 30 | 30 | 100 | 27 | 25 | 93 |
| W. Va. | 3.1 | 3.5 | 113 | 4.6 | 3.8 | 83 |
| N. C. | 80 | 86 | 108 | 71 | 71 | 100 |
| S. C. | 23 | 26 | 113 | 22 | 19 | 86 |
| Ga. | 84 | 92 | 110 | 77 | 79 | 103 |
| Fla. | 18 | 19 | 106 | 18 | 16 | 89 |
| Ky. | 88 | 77 | 88 | 64 | 72 | 112 |
| Tenn. | 66 | 63 | 95 | 58 | 51 | 88 |
| Ala. | 59 | 53 | 90 | 43 | 45 | 105 |
| Miss. | 31 | 30 | 97 | 21 | 23 | 110 |
| Ark. | 24 | 22 | 92 | 21 | 21 | 100 |
| La. | 11 | 11 | 100 | 8 | 9 | 112 |
| Okla. | 23 | 22 | 96 | 24 | 21 | 88 |
| Texas | 62 | 57 | 92 | 52 | 49 | 94 |
| Mont. | 10 | 10 | 100 | 8 | 7 | 88 |
| Idaho | 6 | 6 | 100 | 6 | 6 | 100 |
| Wyo. | 1.3 | 1.6 | 123 | 1.3 | 1.3 | 100 |
| Colo. | 13 | 16 | 123 | 16 | 16 | 100 |
| N. Mex. | 2.9 | 3.2 | 110 | 2.7 | 2.9 | 107 |
| Ariz. | 3.4 | 3.5 | 103 | 3.2 | 3.1 | 97 |
| Utah | 3.7 | 2.9 | 78 | 2.8 | 3.1 | 111 |
| Nev. | .6 | .5 | 83 | .5 | .4 | 80 |
| Wash. | 3.0 | 4.0 | 133 | 4.4 | 5.0 | 114 |
| Oreg. | 7 | 7 | 100 | 5 | 5 | 100 |
| Calif. | 8 | 7 | 88 | 8 | 7 | 88 |
| 48 States | 3,142 | 2,939 | 93 | 2,974 | 2,790 | 94 |
| Alaska | .09 | .10 | 111 | .06 | .04 | 67 |
| Hawaii | 3.0 | 2.8 | 93 | 3.0 | 2.6 | 87 |
| U. S. | 3,152 | 2,942 | 93 | 2,977 | 2,793 | 94 |

Hogs and Pigs: Number on farms, breeding, market and total,
March 1, 1968 and 1969, selected States

| State | Breeding | | | Market | | | Total | | |
|---------------------|------------|------------|--------------|------------|------------|--------------|------------|------------|--------------|
| | 1968 | 1969 | As % of 1968 | 1968 | 1969 | As % of 1968 | 1968 | 1969 | As % of 1968 |
| | Number | Number | | Number | Number | | Number | Number | |
| | 1,000 head | 1,000 head | Percent | 1,000 head | 1,000 head | Percent | 1,000 head | 1,000 head | Percent |
| Ohio | 363 | 362 | 100 | 1,981 | 2,052 | 104 | 2,344 | 2,414 | 103 |
| Indiana ... | 662 | 675 | 102 | 3,473 | 3,543 | 102 | 4,135 | 4,218 | 102 |
| Illinois ... | 1,105 | 1,081 | 98 | 5,396 | 5,095 | 94 | 6,501 | 6,176 | 95 |
| Wisconsin : | 332 | 314 | 95 | 1,111 | 1,115 | 100 | 1,443 | 1,429 | 99 |
| Minnesota : | 524 | 526 | 100 | 2,263 | 2,317 | 102 | 2,787 | 2,843 | 102 |
| Iowa | 2,414 | 2,463 | 102 | 10,293 | 10,498 | 102 | 12,707 | 12,961 | 102 |
| Missouri ... | 703 | 738 | 105 | 3,203 | 3,363 | 105 | 3,906 | 4,101 | 105 |
| S. Dakota : | 356 | 326 | 92 | 1,126 | 1,304 | 116 | 1,482 | 1,630 | 110 |
| Nebraska ... | 561 | 537 | 96 | 2,390 | 2,532 | 106 | 2,951 | 3,069 | 104 |
| Kansas | 245 | 255 | 104 | 1,285 | 1,443 | 112 | 1,530 | 1,698 | 111 |
| Total 10 States ... | 7,265 | 7,277 | 100 | 32,521 | 33,262 | 102 | 39,786 | 40,539 | 102 |
| Hawaii | 10 | 10 | 100 | 57 | 51 | 89 | 67 | 61 | 91 |

Market Hogs and Pigs: Number on farms, by weight groups, March 1, 1968 and 1969, selected States

| State | Under 60 lbs. | | 60-119 lbs. | | 120-179 lbs. | | 180-219 lbs. | | 220 lbs. and over | |
|---------------------|---------------|--------|-------------|-------|--------------|-------|--------------|-------|-------------------|-------|
| | 1968 | 1969 | 1968 | 1969 | 1968 | 1969 | 1968 | 1969 | 1968 | 1969 |
| | 1,000 head | | | | | | | | | |
| Ohio | 772 | 759 | 446 | 482 | 475 | 503 | 248 | 267 | 40 | 41 |
| Indiana ... | 1,406 | 1,453 | 785 | 779 | 747 | 772 | 462 | 461 | 73 | 78 |
| Illinois ... | 1,851 | 1,794 | 1,187 | 1,146 | 1,408 | 1,299 | 810 | 713 | 140 | 143 |
| Wisconsin : | 475 | 463 | 219 | 226 | 239 | 247 | 156 | 156 | 22 | 23 |
| Minnesota .. | 928 | 927 | 430 | 440 | 475 | 510 | 362 | 371 | 68 | 69 |
| Iowa | 3,531 | 3,643 | 2,131 | 2,131 | 2,779 | 2,782 | 1,492 | 1,575 | 360 | 367 |
| Missouri ... | 1,217 | 1,312 | 769 | 790 | 736 | 757 | 359 | 370 | 122 | 134 |
| S. Dakota : | 417 | 456 | 231 | 287 | 281 | 346 | 158 | 169 | 39 | 46 |
| Nebraska ... | 860 | 899 | 549 | 570 | 598 | 633 | 323 | 354 | 60 | 76 |
| Kansas | 488 | 577 | 283 | 318 | 302 | 289 | 180 | 216 | 32 | 43 |
| Total 10 States ... | 11,945 | 12,283 | 7,030 | 7,169 | 8,040 | 8,138 | 4,550 | 4,652 | 956 | 1,020 |
| Hawaii | 27 | 23 | 18 | 17 | 11 | 10 | 1 | 1 | --- | --- |

Hogs and Pigs: Number on farms, breeding, market, and total,
June 1, 1968 and 1969, selected States

| State | Breeding | | | Market | | | Total | | |
|-----------------|------------|---------|-----------------|---------|------------|-----------------|--------|--------|-----------------|
| | 1969 | | As % of 1968 | 1969 | | As % of 1968 | 1969 | | As % of 1968 |
| | Number | 1968 | | Number | 1968 | | Number | 1968 | |
| | 1,000 head | Percent | 1,000 head | Percent | 1,000 head | Percent | | | |
| Ohio | 382 | 395 | 103 | 2,167 | 2,154 | 99 | 2,549 | 2,549 | 100 |
| Indiana .. | 647 | 660 | 102 | 3,665 | 3,738 | 102 | 4,312 | 4,398 | 102 |
| Illinois .. | 1,109 | 1,023 | 92 | 5,997 | 5,372 | 90 | 7,106 | 6,395 | 90 |
| Wisconsin .. | 313 | 322 | 103 | 1,475 | 1,466 | 99 | 1,788 | 1,788 | 100 |
| Minnesota .. | 553 | 547 | 99 | 3,082 | 2,870 | 93 | 3,635 | 3,417 | 94 |
| Iowa | 2,223 | 2,199 | 99 | 13,109 | 12,366 | 94 | 15,332 | 14,565 | 95 |
| Missouri .. | 668 | 659 | 99 | 3,670 | 3,592 | 98 | 4,338 | 4,251 | 98 |
| S. Dakota .. | 333 | 331 | 99 | 1,961 | 1,802 | 92 | 2,294 | 2,133 | 93 |
| Nebraska .. | 516 | 547 | 106 | 3,042 | 2,869 | 94 | 3,558 | 3,416 | 96 |
| Kansas | 243 | 261 | 107 | 1,494 | 1,476 | 99 | 1,737 | 1,737 | 100 |
| Total 10 States | 6,987 | 6,944 | 99 | 39,662 | 37,705 | 95 | 46,649 | 44,649 | 96 |
| Hawaii ... | 10 | 10 | 100 | 56 | 48 | 86 | 66 | 58 | 88 |

Market Hogs and Pigs: Number on farms, by weight groups,
June 1, 1968 and 1969, selected States

| State | Under 60 lbs. | | 60-119 lbs. | | 120-179 lbs. | | 180-219 lbs. | | 220 lbs. and over | |
|-----------------|---------------|--------|-------------|-------|--------------|-------|--------------|-------|-------------------|-------|
| | 1969 | | 1968 | | 1969 | | 1968 | | 1969 | |
| | 1968 | 1969 | 1968 | 1969 | 1968 | 1969 | 1968 | 1969 | 1968 | 1969 |
| | 1,000 head | | | | | | | | | |
| Ohio | 949 | 948 | 598 | 593 | 412 | 409 | 176 | 172 | 32 | 32 |
| Indiana .. | 1,576 | 1,525 | 935 | 1,028 | 751 | 755 | 330 | 355 | 73 | 75 |
| Illinois .. | 2,879 | 2,445 | 1,439 | 1,370 | 1,019 | 886 | 492 | 510 | 168 | 161 |
| Wisconsin .. | 914 | 895 | 270 | 271 | 170 | 183 | 90 | 88 | 31 | 29 |
| Minnesota .. | 1,710 | 1,535 | 678 | 674 | 370 | 359 | 247 | 230 | 77 | 72 |
| Iowa | 7,079 | 6,307 | 2,884 | 2,844 | 1,704 | 1,731 | 1,009 | 1,113 | 433 | 371 |
| Missouri .. | 1,908 | 1,724 | 734 | 772 | 569 | 611 | 330 | 359 | 129 | 126 |
| S. Dakota .. | 1,284 | 1,090 | 353 | 361 | 167 | 180 | 98 | 108 | 59 | 63 |
| Nebraska .. | 1,734 | 1,463 | 639 | 674 | 380 | 402 | 213 | 244 | 76 | 86 |
| Kansas ... | 672 | 657 | 389 | 383 | 239 | 244 | 157 | 155 | 37 | 37 |
| Total 10 States | 20,705 | 18,589 | 8,919 | 8,970 | 5,781 | 5,760 | 3,142 | 3,334 | 1,115 | 1,052 |
| Hawaii ... | 27 | 24 | 18 | 14 | 10 | 9 | 1 | 1 | --- | --- |

Hogs and Pigs: Number on farms, breeding, market and total,
September 1, 1968 and 1969, selected States

| State | Breeding | | | Market | | | Total | | |
|------------------------|------------|---------|-----------------|---------|------------|-----------------|--------|--------|-----------------|
| | 1969 | | As % of 1968 | 1969 | | As % of 1968 | 1969 | | As % of 1968 |
| | 1968 | Number | | 1968 | Number | | 1968 | Number | |
| | 1,000 head | Percent | 1,000 head | Percent | 1,000 head | Percent | | | |
| Ohio | 353 | 357 | 101 | 2,365 | 2,388 | 101 | 2,718 | 2,745 | 101 |
| Indiana .. | 646 | 639 | 99 | 3,967 | 3,928 | 99 | 4,613 | 4,567 | 99 |
| Illinois : | 1,048 | 1,011 | 96 | 6,440 | 5,728 | 89 | 7,488 | 6,739 | 90 |
| Wisconsin : | 314 | 314 | 100 | 1,586 | 1,586 | 100 | 1,900 | 1,900 | 100 |
| Minnesota : | 538 | 523 | 97 | 3,196 | 3,211 | 100 | 3,734 | 3,734 | 100 |
| Iowa | 2,168 | 2,050 | 95 | 13,894 | 12,085 | 87 | 16,062 | 14,135 | 88 |
| Missouri : | 610 | 586 | 96 | 3,907 | 3,660 | 94 | 4,517 | 4,246 | 94 |
| S. Dakota : | 285 | 275 | 96 | 1,904 | 1,761 | 92 | 2,189 | 2,036 | 93 |
| Nebraska : | 486 | 488 | 100 | 2,866 | 2,663 | 93 | 3,352 | 3,151 | 94 |
| Kansas ...: | 249 | 250 | 100 | 1,468 | 1,415 | 96 | 1,717 | 1,665 | 97 |
| Total 10 States ..: | 6,697 | 6,493 | 97 | 41,593 | 38,425 | 92 | 48,290 | 44,918 | 93 |
| Hawaii ...: | 10 | 9 | 90 | 56 | 47 | 84 | 66 | 56 | 85 |

Market Hogs and Pigs: Number on farms, by weight groups,
September 1, 1968 and 1969, selected States

| State | Under 60 lbs. | | 60-119 lbs. | | 120-179 lbs. | | 180-219 lbs. | | 220 lbs. and over | |
|------------------------|---------------|--------|-------------|-------|--------------|-------|--------------|-------|----------------------|------|
| | 1968 | 1969 | 1968 | 1969 | 1968 | 1969 | 1968 | 1969 | 1968 | 1969 |
| | 1,000 head | | | | | | | | | |
| Ohio | 970 | 984 | 544 | 554 | 532 | 525 | 284 | 287 | 35 | 38 |
| Indiana ..: | 1,706 | 1,650 | 873 | 903 | 833 | 805 | 476 | 491 | 79 | 79 |
| Illinois : | 2,318 | 2,148 | 1,636 | 1,432 | 1,558 | 1,289 | 773 | 716 | 155 | 143 |
| Wisconsin : | 730 | 714 | 357 | 373 | 293 | 293 | 174 | 174 | 32 | 32 |
| Minnesota : | 1,227 | 1,300 | 812 | 777 | 655 | 626 | 448 | 450 | 54 | 58 |
| Iowa | 4,724 | 4,290 | 3,751 | 3,021 | 3,335 | 2,840 | 1,737 | 1,595 | 347 | 339 |
| Missouri : | 1,504 | 1,449 | 1,055 | 977 | 805 | 736 | 449 | 410 | 94 | 88 |
| S. Dakota : | 505 | 495 | 533 | 497 | 571 | 492 | 257 | 238 | 38 | 39 |
| Nebraska : | 831 | 826 | 774 | 719 | 773 | 652 | 416 | 399 | 72 | 67 |
| Kansas ...: | 499 | 495 | 352 | 347 | 338 | 311 | 235 | 220 | 44 | 42 |
| Total 10 States ..: | 15,014 | 14,351 | 10,687 | 9,600 | 9,693 | 8,569 | 5,249 | 4,980 | 950 | 925 |
| Hawaii ...: | 27 | 25 | 19 | 15 | 9 | 6 | 1 | 1 | --- | --- |

Hogs and Pigs: Number on farms, breeding, market and total,
December 1, 1968 and 1969, selected States

| State | Breeding | | | Market | | | Total | | |
|---------------------|------------|---------|-----------------|---------|------------|-----------------|--------|--------|-----------------|
| | 1969 | | As % of 1968 | 1969 | | As % of 1968 | 1969 | | As % of 1968 |
| | Number | 1968 | | Number | 1968 | | Number | 1968 | |
| | 1,000 head | Percent | 1,000 head | Percent | 1,000 head | Percent | | | |
| Ohio | 362 | 358 | 99 | 2,221 | 2,199 | 99 | 2,583 | 2,557 | 99 |
| Indiana ... | 621 | 585 | 94 | 3,878 | 3,914 | 101 | 4,499 | 4,499 | 100 |
| Illinois... | 1,092 | 983 | 90 | 6,187 | 5,568 | 90 | 7,279 | 6,551 | 90 |
| Wisconsin : | 318 | 294 | 92 | 1,450 | 1,386 | 96 | 1,768 | 1,680 | 95 |
| Minnesota : | 543 | 531 | 98 | 2,821 | 2,631 | 93 | 3,364 | 3,162 | 94 |
| Iowa | 2,536 | 2,302 | 91 | 13,316 | 11,648 | 87 | 15,852 | 13,950 | 88 |
| Missouri : | 707 | 672 | 95 | 3,855 | 3,525 | 91 | 4,562 | 4,197 | 92 |
| S. Dakota : | 335 | 301 | 90 | 1,525 | 1,373 | 90 | 1,860 | 1,674 | 90 |
| Nebraska : | 484 | 440 | 91 | 2,742 | 2,399 | 87 | 3,226 | 2,839 | 88 |
| Kansas ...: | 265 | 255 | 96 | 1,502 | 1,388 | 92 | 1,767 | 1,643 | 93 |
| Total 10 States ..: | 7,263 | 6,721 | 93 | 39,497 | 36,031 | 91 | 46,760 | 42,752 | 91 |
| Hawaii ..: | 10 | 9 | 90 | 54 | 48 | 89 | 64 | 57 | 89 |

Market Hogs and Pigs: Number on farms by weight groups,
December 1, 1968 and 1969, selected States

| State | Under 60 lbs. | | 60-119 lbs. | | 120-179 lbs. | | 180-219 lbs. | | 220 lbs. and over. | |
|---------------------|---------------|--------|-------------|-------|--------------|-------|--------------|-------|--------------------|-------|
| | 1969 | | 1968 | | 1968 | | 1969 | | 1968 | |
| | 1968 | 1969 | 1968 | 1969 | 1968 | 1969 | 1968 | 1969 | 1968 | 1969 |
| | 1,000 head | | | | | | | | | |
| Ohio | 866 | 857 | 666 | 660 | 422 | 418 | 222 | 220 | 45 | 44 |
| Indiana .. | 1,210 | 1,252 | 1,140 | 1,155 | 1,008 | 920 | 434 | 509 | 86 | 78 |
| Illinois... | 2,135 | 2,060 | 1,794 | 1,531 | 1,268 | 1,197 | 804 | 613 | 186 | 167 |
| Wisconsin : | 551 | 541 | 377 | 360 | 305 | 284 | 181 | 166 | 36 | 35 |
| Minnesota : | 959 | 882 | 872 | 787 | 550 | 539 | 347 | 339 | 93 | 84 |
| Iowa | 4,461 | 4,018 | 3,462 | 3,087 | 2,863 | 2,388 | 1,931 | 1,666 | 599 | 489 |
| Missouri : | 1,465 | 1,304 | 1,041 | 969 | 752 | 705 | 424 | 388 | 173 | 159 |
| S. Dakota : | 549 | 493 | 374 | 330 | 290 | 234 | 221 | 220 | 91 | 96 |
| Nebraska : | 1,069 | 959 | 699 | 624 | 494 | 420 | 343 | 288 | 137 | 108 |
| Kansas....: | 616 | 527 | 368 | 382 | 293 | 257 | 162 | 166 | 60 | 49 |
| Total 10 States ..: | 13,881 | 12,893 | 10,793 | 9,892 | 8,245 | 7,362 | 5,072 | 4,575 | 1,506 | 1,309 |
| Hawaii ..: | 24 | 21 | 17 | 17 | 10 | 9 | 2 | 1 | 1 | --- |

Farrowings: Number of sows, pigs per litter and pig crop,
December 1/ through Feb., 1967-70, selected States

| State | Sows farrowing | | | | | Pigs per litter | | Pig Crop 3/ | | |
|-----------------|----------------|-------|---------|---------|--------------|-----------------|------------|-------------|---------|--------------|
| | 1967 | 1968 | 1969 | 1970 2/ | As % of 1969 | 1968 | 1969 | 1968 | 1969 | As % of 1968 |
| | 1,000 head | | Percent | | Number | | 1,000 head | | Percent | |
| Ohio | 116 | 115 | 115 | 118 | 103 | 7.10 | 7.30 | 816 | 840 | 103 |
| Ind. | 219 | 219 | 210 | 214 | 102 | 7.26 | 7.58 | 1,590 | 1,592 | 100 |
| Ill. | 307 | 307 | 292 | 307 | 105 | 7.05 | 6.80 | 2,164 | 1,986 | 92 |
| Wis. | 83 | 80 | 74 | 75 | 101 | 7.79 | 7.62 | 623 | 564 | 91 |
| Minn. | 136 | 141 | 141 | 144 | 102 | 7.78 | 7.42 | 1,097 | 1,046 | 95 |
| Iowa | 462 | 480 | 480 | 470 | 98 | 7.25 | 7.05 | 3,430 | 3,384 | 97 |
| Mo. | 186 | 190 | 196 | 190 | 97 | 7.08 | 7.33 | 1,345 | 1,437 | 107 |
| S. Dak. | 50 | 58 | 67 | 67 | 100 | 7.60 | 7.33 | 441 | 491 | 111 |
| Nebr. | 116 | 125 | 131 | 140 | 107 | 7.45 | 7.30 | 931 | 956 | 103 |
| Kans. | 70 | 74 | 76 | 80 | 105 | 7.26 | 7.71 | 537 | 586 | 109 |
| Total 10 States | 1,745 | 1,789 | 1,782 | 1,805 | 101 | 7.28 | 7.23 | 13,024 | 12,882 | 99 |
| Hawaii | 2.9 | 3.0 | 2.7 | 2.6 | 96 | 6.65 | 6.89 | 20 | 19 | 95 |

1/ December preceding year. 2/ Intentions. 3/ Number of pigs born December through February that were still on hand March 1 or had been sold.

Farrowings: Number of sows, pigs per litter and pig crop,
March-May, 1967-70, selected States

| State | Sows farrowing | | | | | Pigs per litter | | Pig crop 2/ | | |
|-----------------|----------------|-------|---------|---------|--------------|-----------------|------------|-------------|---------|--------------|
| | 1967 | 1968 | 1969 | 1970 1/ | As % of 1969 | 1968 | 1969 | 1968 | 1969 | As % of 1968 |
| | 1,000 head | | Percent | | Number | | 1,000 head | | Percent | |
| Ohio | 155 | 146 | 140 | 147 | 105 | 7.59 | 7.60 | 1,108 | 1,064 | 96 |
| Ind. | 235 | 235 | 230 | 239 | 104 | 7.53 | 7.52 | 1,770 | 1,730 | 98 |
| Ill. | 508 | 508 | 442 | 469 | 106 | 7.19 | 7.00 | 3,653 | 3,094 | 85 |
| Wis. | 149 | 149 | 150 | 147 | 98 | 7.74 | 7.55 | 1,153 | 1,132 | 98 |
| Minn. | 268 | 279 | 246 | 258 | 105 | 7.58 | 7.45 | 2,115 | 1,833 | 87 |
| Iowa | 1,179 | 1,155 | 1,028 | 1,059 | 103 | 7.52 | 7.50 | 8,686 | 7,710 | 89 |
| Mo. | 293 | 299 | 278 | 278 | 100 | 7.54 | 7.13 | 2,254 | 1,982 | 88 |
| S. Dak. | 200 | 206 | 177 | 186 | 105 | 7.50 | 7.30 | 1,545 | 1,292 | 84 |
| Nebr. | 245 | 265 | 249 | 249 | 100 | 7.39 | 7.35 | 1,958 | 1,830 | 93 |
| Kans. | 98 | 104 | 106 | 112 | 106 | 7.76 | 7.67 | 807 | 813 | 101 |
| Total 10 States | 3,330 | 3,346 | 3,046 | 3,144 | 103 | 7.49 | 7.38 | 25,049 | 22,480 | 90 |
| Hawaii | 2.8 | 3.0 | 2.7 | 2.6 | 96 | 6.66 | 7.04 | 20 | 19 | 95 |

1/ Intentions. 2/ Number of pigs born March through May that were still on hand June 1 or had been sold.

Farrowings: Number of sows, pigs per litter and pig crop,
June-August 1967-1969, selected States

| State | Sows farrowing | | | | Pigs per litter | | Pig crop 1/ | | |
|---------------|----------------|------|------|--------------|-----------------|------|-------------|--------|--------------|
| | 1967 | 1968 | 1969 | As % of 1968 | 1968 | 1969 | 1968 | Number | As % of 1968 |
| | -1,000 head- | | Per- | cent | -Number- | | 1,000 head | Per- | cent |
| Ohio | 142 | 142 | 139 | 98 | 7.53 | 7.50 | 1,069 | 1,042 | 97 |
| Indiana | 254 | 262 | 241 | 92 | 7.21 | 7.75 | 1,889 | 1,868 | 99 |
| Illinois ... | 417 | 425 | 374 | 88 | 7.16 | 7.10 | 3,043 | 2,655 | 87 |
| Wisconsin .. | 108 | 108 | 104 | 96 | 7.86 | 7.87 | 849 | 818 | 96 |
| Minnesota .. | 178 | 190 | 190 | 100 | 7.56 | 7.50 | 1,436 | 1,425 | 99 |
| Iowa | 665 | 718 | 625 | 87 | 7.46 | 7.20 | 5,356 | 4,500 | 84 |
| Missouri ... | 235 | 249 | 229 | 92 | 7.27 | 7.13 | 1,810 | 1,633 | 90 |
| South Dakota: | 64 | 68 | 61 | 90 | 7.23 | 7.50 | 492 | 458 | 93 |
| Nebraska ... | 122 | 134 | 122 | 91 | 7.54 | 7.50 | 1,010 | 915 | 91 |
| Kansas | 73 | 77 | 70 | 91 | 7.69 | 7.65 | 592 | 536 | 91 |

Total 10 States 2,258 2,373 2,155 91 7.39 7.35 17,546 15,850 90

Hawaii 2.9 3.0 2.8 93 7.40 6.80 22 19 86

1/ Number of pigs born June through August that were still on hand September 1 or had been sold.

Farrowings: Number of sows, pigs per litter and pig crop,
September-November, 1967-1969, selected States

| State | Sows farrowing | | | | Pigs per litter | | Pig crop 1/ | | |
|---------------|----------------|------|------|--------------|-----------------|------|-------------|--------|--------------|
| | 1967 | 1968 | 1969 | As % of 1968 | 1968 | 1969 | 1968 | Number | As % of 1968 |
| | -1,000 head- | | Per- | cent | -Number- | | 1,000 head | Per- | cent |
| Ohio | 121 | 125 | 125 | 100 | 7.40 | 7.40 | 925 | 925 | 100 |
| Indiana | 184 | 188 | 184 | 98 | 7.58 | 7.59 | 1,425 | 1,397 | 98 |
| Illinois ... | 382 | 382 | 355 | 93 | 7.13 | 7.10 | 2,724 | 2,520 | 93 |
| Wisconsin .. | 108 | 111 | 107 | 96 | 7.66 | 7.76 | 350 | 830 | 98 |
| Minnesota .. | 147 | 159 | 146 | 92 | 7.30 | 7.22 | 1,161 | 1,054 | 91 |
| Iowa | 580 | 707 | 636 | 90 | 7.35 | 7.15 | 5,196 | 4,547 | 88 |
| Missouri ... | 268 | 276 | 254 | 92 | 7.23 | 7.01 | 1,995 | 1,781 | 89 |
| South Dakota: | 88 | 91 | 85 | 93 | 7.62 | 7.31 | 693 | 621 | 90 |
| Nebraska ... | 170 | 185 | 166 | 90 | 7.51 | 7.40 | 1,389 | 1,228 | 88 |
| Kansas | 86 | 95 | 91 | 96 | 7.63 | 7.70 | 725 | 701 | 97 |

Total 10 States 2,234 2,319 2,149 93 7.37 7.26 17,083 15,604 91

Hawaii 2.8 3.0 2.6 87 6.67 7.40 20 19 95

1/ Number of pigs born September through November that are still on hand December 1, or had been sold.

UNITED STATES DEPARTMENT OF AGRICULTURE
STATISTICAL REPORTING SERVICE
WASHINGTON, D. C. 20250



OFFICIAL BUSINESS

(Continued from page 2)

DECEMBER-MAY INTENTIONS UP 3 PERCENT

U. S. hog producers reported intentions to farrow 6,568,000 sows during the December 1969-May 1970 period, 3 percent above a year earlier. All regions show increases from a year earlier ranging from 1 percent in the West to 8 percent in the South Atlantic region.

If the December-May sow farrowing intentions are realized and pigs per litter are average, allowing for trend, the pig crop will total 48,603,000 head, 4 percent more than a year earlier.

Sows bred and intended to farrow in the 10 Corn Belt States during December 1969-February 1970 total 1,805,000 head, 1 percent more than a year earlier. Intentions are up in all of the 10 States except Iowa and Missouri, which were down and South Dakota, unchanged.

Reported intentions are for 3,144,000 sows to farrow during the March-May 1970 quarter in the 10 States, 3 percent more than last year. All of the 10 States except Wisconsin, Missouri and Nebraska are expecting farrowings to increase 3 to 6 percent over a year earlier. Wisconsin is down 2 percent and Missouri and Nebraska are unchanged.

Farrowings in these 10 States are expected to total 4,949,000 sows for the December 1969-May 1970 period, an increase of 3 percent from a year earlier.

CROP REPORTING BOARD

HOGS AND PIGS, December 1969 - 20 - Crop Reporting Board, SRS, USDA