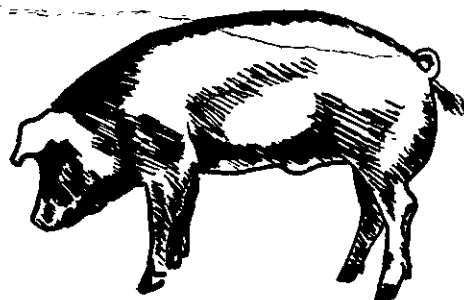


HOGS AND PIGS

JUNE 1970 (U.S. and 10 Corn Belt States)

In this issue:

- ★ June 1 Inventory
- ★ Sows Farrowing
- ★ Pig Crop



Release:
June 24, 1970
3:00 P.M. EDT

Hogs and pigs on U.S. farms on June 1, 1970 are estimated at 64.7 million head -- a 10 percent increase from a year earlier, according to the Crop Reporting Board. Hogs and pigs kept for breeding are estimated at 10.7 million, up 16 percent from a year earlier. Market hogs and pigs, at 54.0 million, are up 9 percent.

The December-May 1970 pig crop is estimated at 52.6 million head, 12 percent above the same period in 1969. A total of 7.2 million sows farrowed during December-May 1970, 13 percent more than a year earlier. Pigs per litter averaged 7.33 compared with 7.36 last year.

Hog producers intend to farrow 6.7 million sows during June-November 1970, 17 percent more than in the year earlier period. Intended farrowings and average pigs per litter adjusted for trend, if realized, would produce a June-November pig crop of 49.2 million head, 17 percent more than last year. The 1970 pig crop (December 1969 through November 1970) would then be 101.8 million head, 14 percent above 1969 -- largest since 1943.

HOGS AND PIGS ON FARMS UP 10 PERCENT

The number of hogs and pigs on farms June 1 is estimated at 64,734,000 -- up 10 percent from a year earlier. Breeding hogs at 10,712,000, were 16 percent more than a year earlier. Hogs and pigs for market totaled 54,022,000, up 9 percent from a year earlier.

By weight groups, market hogs and pigs on June 1, 1970, and the percentage increases from the previous year are: under 60 pounds--27,187,000 head, up 13 percent; 60-119 pounds--12,964,000 head, up 8 percent; 120-179 pounds--8,050,000 head, up 3 percent; 180-219 pounds--4,377,000 head, up 1 percent and 220 pounds and over--1,444,000 head, up 5 percent.

Hogs on farms in the North Atlantic States on June 1, 1970 totaled 931,000 head, compared with 936,000 a year earlier. In the South Atlantic States there were 5,946,000 hogs, up 9 percent; in the South Central States 6,376,000, up 13 percent, and in the Western, 1,238,000, up 10 percent compared with June 1, 1969.

In the 10 Corn Belt States -- Ohio, Indiana, Illinois, Wisconsin, Minnesota, Iowa, Missouri, South Dakota, Nebraska and Kansas -- the June 1 number of hogs and pigs is estimated at 48,979,000 head, up 10 percent from a year earlier. These 10 States accounted for 76 percent of the Nation's total hog and pig inventory. Iowa, with nearly one-fourth of the total hog inventory, had 8 percent more hogs than a year earlier.

Market hogs and pigs in the 10 States totaled 41,102,000, up 9 percent from a year earlier, and breeding hogs at 7,877,000 head, were 13 percent above June 1, 1969.

U.S. DECEMBER-MAY PIG CROP UP 12 PERCENT

The December-May 1970 pig crop is estimated at 52,563,000 head, 12 percent above a year earlier. All regions of the country, except the North Atlantic, had larger spring pig crops than last year. The Western region exhibited the largest percentage increase at 14 percent, followed by the West North Central region with 13 percent. The South Atlantic and South Central regions each showed 12 percent increases, and the East North Central region had 11 percent more spring pigs.

Sows farrowed totaled 7,174,000 head during December-May 1970, an increase of 13 percent from a year earlier. Farrowings were up in all regions of the country, with the largest percentage increases occurring in the South Atlantic and South Central regions.

In December-May 1970, pigs per litter averaged 7.33, compared with 7.36 for this period a year ago.

The December-February 1970 pig crop in the 10 Corn Belt States totaled 13,675,000, 6 percent more than a year earlier. Sows farrowing during the quarter totaled 1,894,000.

The March-May 1970 pig crop in the 10 Corn Belt States totaled 26,014,000, up 16 percent from the same period of 1969. Sows farrowing during the March-May period totaled 3,530,000.

JUNE-NOVEMBER INTENTIONS UP 17 PERCENT

The Nation's hog producers reported intentions to farrow 6,697,000 sows during the June-November 1970 period, an increase of 17 percent from a year earlier. All areas expect increased farrowings, with the increases ranging from 6 percent in the North Atlantic States, to 25 percent in the South Central States.

Realization of the June-November sow farrowings and average number of pigs per litter plus an allowance for trend would indicate a pig crop of 49,200,000 head, 17 percent above a year earlier.

Farrowings in the 10 Corn Belt States during June-August 1970 are expected to total 2,517,000 head, 17 percent more than a year earlier. Farrowings are expected to be above a year earlier in each of the 10 States, ranging from increases of 10 percent in both Ohio and Wisconsin, to 39 percent in Nebraska.

During the September-November 1970 quarter, 2,470,000 sows are expected to farrow in the 10 States, 15 percent more than last year. Increases range from 8 percent in Ohio to 29 percent in South Dakota.

* * * * *

CROP REPORTING BOARD:

G. D. Simpson, Chairman,

M. L. Koehn, Secretary,

B. W. Kelly,

R. Potas,

R. F. Carver,

A. F. Feistner,

M. H. Hammer,

A. J. Hintzman,

J. C. Ranek,

H. J. Tippett,

E. B. Hannawald,

J. S. Buche,

W. C. Evans,

G. E. Fisher,

G. F. Hart,

J. R. Kendall,

R. L. Sitzman,

W. H. Walther,

APPROVED:



ACTING SECRETARY OF AGRICULTURE

Hogs and Pigs: Number on farms, sows farrowing and pig crop,
United States, 1968-70

| Item | 1968 | 1969 | 1970 | 1970 as percent of 1969 Percent |
|--------------------------------|--------|---------------|----------|--|
| | | 1,000 head | | |
| <u>Number on farms-June 1:</u> | | | | |
| All hogs and pigs | 60,557 | 58,879 | 64,734 | 110 |
| Kept for breeding | 9,256 | 9,248 | 10,712 | 116 |
| Market | 51,301 | 49,631 | 54,022 | 109 |
| <u>Market hogs and pigs</u> | | | | |
| <u>by weight groups:</u> | | | | |
| Under 60 pounds | 26,021 | 24,083 | 27,187 | 113 |
| 60-119 pounds | 11,893 | 12,037 | 12,964 | 108 |
| 120-179 pounds | 7,788 | 7,792 | 8,050 | 103 |
| 180-219 pounds | 4,170 | 4,340 | 4,377 | 101 |
| 220 pounds and over | 1,429 | 1,379 | 1,444 | 105 |
| <u>Sows farrowing:</u> | | | | |
| December 1/-February | 2,557 | 2,571 | 2,751 | 107 |
| March-May | 4,112 | 3,801 | 4,423 | 116 |
| December-May | 6,669 | 6,372 | 7,174 | 113 |
| June-August | 3,152 | 2,942 | --- | --- |
| September-November | 2,977 | 2,793 | --- | --- |
| June-November | 6,129 | 5,735 | 2/6,697 | 117 |
| <u>Pig Crop:</u> | | | | |
| December 1/-May | 49,146 | 46,877 | 52,563 | 112 |
| June-November | 45,071 | 42,071 | 3/49,200 | 117 |
| Year | 94,217 | 88,948 | 101,763 | 114 |
| <u>Pigs per litter</u> | | <u>Number</u> | | |
| December 1/-May | 7.37 | 7.36 | 7.33 | xxx |
| June-November | 7.35 | 7.34 | 3/7.35 | xxx |

1/ December preceding year.

2/ Intentions.

3/ Average number of pigs per litter with allowance for trend used to compute indicated June-November pig crop.

Hogs and Pigs: Number on farms, sows farrowing and pig crop,
1968-70, 10 States ^{1/}

| Item | 1968 | 1969 | 1970 | 1970 as percent of 1969 Percent |
|--|------------|--------|---------------------|--|
| | 1,000 head | | | |
| <u>Number on farms-June 1:</u> | | | | |
| All hogs and pigs | 46,649 | 44,649 | 48,979 | 110 |
| Kept for breeding | 6,987 | 6,944 | 7,877 | 113 |
| Market | 39,662 | 37,705 | 41,102 | 109 |
| <u>Market hogs and pigs by weight groups</u> | | | | |
| Under 60 pounds | 20,705 | 18,589 | 20,971 | 113 |
| 60-119 pounds | 8,919 | 8,970 | 9,623 | 107 |
| 120-179 pounds | 5,781 | 5,760 | 6,044 | 105 |
| 180-219 pounds | 3,142 | 3,334 | 3,364 | 101 |
| 220 pounds and over | 1,115 | 1,052 | 1,100 | 105 |
| <u>Sows farrowing</u> | | | | |
| December ^{2/} -February | 1,789 | 1,782 | 1,894 | 106 |
| March-May | 3,346 | 3,046 | 3,530 | 116 |
| June-August | 2,373 | 2,155 | ^{3/} 2,517 | 117 |
| September-November | 2,319 | 2,149 | ^{3/} 2,470 | 115 |
| <u>Pig Crop:</u> | | | | |
| December ^{2/} -February | 13,024 | 12,882 | 13,675 | 106 |
| March-May | 25,049 | 22,480 | 26,014 | 116 |
| June-August | 17,546 | 15,850 | --- | --- |
| September-November | 17,083 | 15,604 | --- | --- |
| <u>Pigs per litter</u> | | | | |
| December ^{2/} -February | 7.28 | 7.23 | 7.22 | xxx |
| March-May | 7.49 | 7.38 | 7.37 | xxx |
| June-August | 7.39 | 7.35 | --- | --- |
| September-November | 7.37 | 7.26 | --- | --- |

^{1/} See page 12 for States included.

^{2/} December preceding year.

^{3/} Intentions.

| Hogs and Pigs: Number on farms, breeding, market and total, June 1, 1969 and 1970 | | | | | | | | | |
|---|--------------|---------|---------|------------|---------|---------|------------|---------|---------|
| State | For breeding | | | Market | | | Total | | |
| | 1970 | | | 1970 | | | 1970 | | |
| | 1969 | Number | As % of | 1969 | Number | As % of | 1969 | Number | As % of |
| | 1,000 head | Percent | | 1,000 head | Percent | | 1,000 head | Percent | |
| Maine | 2.0 | 1.7 | 85 | 6.6 | 5.8 | 88 | 8.6 | 7.5 | 87 |
| N. H. | 2 | 2 | 100 | 12 | 9 | 75 | 14 | 11 | 79 |
| Vt. | .7 | .7 | 100 | 4.4 | 4.0 | 91 | 5.1 | 4.7 | 92 |
| Mass. | 12 | 12 | 100 | 77 | 70 | 91 | 89 | 82 | 92 |
| R. I. | 1.3 | 2 | 154 | 8.6 | 9 | 105 | 9.9 | 11 | 111 |
| Conn. | 2 | 1.6 | 80 | 9 | 7.2 | 80 | 11 | 8.8 | 80 |
| N. Y. | 20 | 19 | 95 | 95 | 93 | 98 | 115 | 112 | 97 |
| N. J. | 12 | 13 | 108 | 121 | 115 | 95 | 133 | 128 | 96 |
| Pa. | 77 | 85 | 110 | 473 | 481 | 102 | 550 | 566 | 103 |
| Ohio | 395 | 428 | 108 | 2,154 | 2,248 | 104 | 2,549 | 2,676 | 105 |
| Ind. | 660 | 781 | 118 | 3,738 | 4,101 | 110 | 4,398 | 4,882 | 111 |
| Ill. | 1,023 | 1,156 | 113 | 5,372 | 6,070 | 113 | 6,395 | 7,226 | 113 |
| Mich. | 109 | 135 | 124 | 525 | 638 | 122 | 634 | 773 | 122 |
| Wis. | 322 | 338 | 105 | 1,466 | 1,539 | 105 | 1,788 | 1,877 | 105 |
| Minn. | 547 | 639 | 117 | 2,870 | 3,120 | 109 | 3,417 | 3,759 | 110 |
| Iowa | 2,199 | 2,517 | 114 | 12,366 | 13,213 | 107 | 14,565 | 15,730 | 108 |
| Mo. | 659 | 775 | 118 | 3,592 | 4,071 | 113 | 4,251 | 4,846 | 114 |
| N. Dak. | 53 | 65 | 123 | 328 | 369 | 112 | 381 | 434 | 114 |
| S. Dak. | 331 | 365 | 110 | 1,802 | 2,067 | 115 | 2,133 | 2,432 | 114 |
| Nebr. | 547 | 568 | 104 | 2,869 | 2,985 | 104 | 3,416 | 3,553 | 104 |
| Kans. | 261 | 310 | 119 | 1,476 | 1,688 | 114 | 1,737 | 1,998 | 115 |
| Del. | 7 | 9 | 129 | 30 | 37 | 123 | 37 | 46 | 124 |
| Md. | 29 | 33 | 114 | 139 | 133 | 96 | 168 | 166 | 99 |
| Va. | 95 | 110 | 116 | 501 | 540 | 108 | 596 | 650 | 109 |
| W. Va. | 12 | 13 | 108 | 65 | 61 | 94 | 77 | 74 | 96 |
| N. C. | 353 | 456 | 129 | 1,663 | 1,822 | 110 | 2,016 | 2,278 | 113 |
| S. C. | 86 | 118 | 137 | 433 | 474 | 109 | 519 | 592 | 114 |
| Ga. | 245 | 268 | 109 | 1,443 | 1,521 | 105 | 1,688 | 1,789 | 106 |
| Fla. | 63 | 70 | 111 | 285 | 281 | 99 | 348 | 351 | 101 |
| Ky. | 228 | 288 | 126 | 1,240 | 1,312 | 106 | 1,468 | 1,600 | 109 |
| Tenn. | 179 | 240 | 134 | 786 | 850 | 108 | 965 | 1,090 | 113 |
| Ala. | 158 | 190 | 120 | 836 | 864 | 103 | 994 | 1,054 | 106 |
| Miss. | 83 | 108 | 130 | 454 | 526 | 116 | 537 | 634 | 118 |
| Ark. | 52 | 65 | 125 | 206 | 234 | 114 | 258 | 299 | 116 |
| La. | 43 | 46 | 107 | 154 | 161 | 105 | 197 | 207 | 105 |
| Okla. | 60 | 79 | 132 | 278 | 316 | 114 | 338 | 395 | 117 |
| Tex. | 133 | 197 | 148 | 752 | 900 | 120 | 885 | 1,097 | 124 |
| Mont. | 27 | 30 | 111 | 143 | 160 | 112 | 170 | 190 | 112 |
| Idaho | 18 | 18 | 100 | 95 | 104 | 109 | 113 | 122 | 108 |
| Wyo. | 5 | 7 | 140 | 23 | 27 | 117 | 28 | 34 | 121 |
| Colo. | 39 | 51 | 131 | 223 | 269 | 121 | 262 | 320 | 122 |
| N. Mex. | 10 | 11 | 110 | 46 | 48 | 104 | 56 | 59 | 105 |
| Ariz. | 9 | 10 | 111 | 51 | 58 | 114 | 60 | 68 | 113 |
| Utah | 10 | 11 | 110 | 41 | 41 | 100 | 51 | 52 | 102 |
| Nev. | 1.0 | 1.4 | 140 | 5.3 | 8.1 | 153 | 6.3 | 9.5 | 151 |
| Wash. | 14 | 16 | 114 | 76 | 81 | 107 | 90 | 97 | 108 |
| Oreg. | 17 | 19 | 112 | 99 | 105 | 106 | 116 | 124 | 107 |
| Calif. | 27 | 24 | 89 | 150 | 139 | 93 | 177 | 163 | 92 |
| 48 States | 2,238 | 10,702 | 116 | 49,582 | 53,975 | 109 | 58,820 | 64,678 | 110 |
| Alaska | .3 | .3 | 100 | 1.0 | .7 | 70 | 1.3 | 1.0 | 77 |
| Hawaii | 10 | 9 | 90 | 48 | 46 | 96 | 58 | 55 | 95 |
| U. S. | 2,248 | 10,712 | 116 | 49,631 | 54,022 | 109 | 58,879 | 64,734 | 110 |

| Market hogs and pigs: Number on farms, by weight groups, June 1, 1969 and 1970 | | | | | | | | | | |
|--|---------------|----------|-------------|----------|--------------|---------|--------------|---------|-------------------|---------|
| State | Under 60 lbs. | | 60-119 lbs. | | 120-179 lbs. | | 180-219 lbs. | | 220 lbs. and over | |
| | 1969 | 1970 | 1969 | 1970 | 1969 | 1970 | 1969 | 1970 | 1969 | 1970 |
| 1,000 head | | | | | | | | | | |
| Maine | 2.7 | 1.7 | 1.4 | 1.5 | 1.3 | .9 | .9 | 1.4 | .3 | .3 |
| N. H. | 4 | 4 | 4 | 2 | 2 | 1 | 1 | 1 | 1 | 1 |
| Vt. | 2.0 | 2.0 | .9 | .9 | .8 | .6 | .5 | .3 | .2 | .2 |
| Mass. | 26 | 27 | 19 | 15 | 17 | 12 | 9 | 10 | 6 | 6 |
| R. I. | 3.6 | 4 | 2.7 | 2 | 1.1 | 1 | .9 | 1 | .3 | 1 |
| Conn. | 4 | 3.4 | 2 | 1.9 | 2 | 1.0 | 1 | .7 | --- | .2 |
| N. Y. | 39 | 37 | 22 | 27 | 17 | 16 | 13 | 8 | 4 | 5 |
| N. J. | 33 | 34 | 32 | 28 | 24 | 25 | 22 | 18 | 10 | 10 |
| Pa. | 204 | 204 | 118 | 125 | 90 | 82 | 47 | 53 | 14 | 17 |
| Ohio | 948 | 1,012 | 593 | 618 | 409 | 427 | 172 | 169 | 32 | 22 |
| Ind. | 1,525 | 1,641 | 1,028 | 1,230 | 755 | 779 | 355 | 369 | 75 | 82 |
| Ill. | 2,445 | 3,035 | 1,370 | 1,396 | 886 | 1,032 | 510 | 486 | 161 | 121 |
| Mich. | 273 | 313 | 129 | 140 | 68 | 89 | 47 | 77 | 8 | 19 |
| Wis. | 895 | 931 | 271 | 293 | 183 | 192 | 88 | 92 | 29 | 31 |
| Minn. | 1,535 | 1,685 | 674 | 717 | 359 | 437 | 230 | 187 | 72 | 94 |
| Iowa | 6,307 | 7,003 | 2,844 | 2,907 | 1,731 | 1,718 | 1,113 | 1,189 | 371 | 396 |
| Mo. | 1,724 | 2,117 | 772 | 835 | 611 | 623 | 359 | 366 | 126 | 130 |
| N. Dak. | 210 | 244 | 61 | 63 | 24 | 26 | 18 | 18 | 15 | 18 |
| S. Dak. | 1,090 | 1,281 | 361 | 455 | 180 | 165 | 108 | 83 | 63 | 83 |
| Nebr. | 1,463 | 1,507 | 674 | 716 | 402 | 418 | 244 | 254 | 86 | 90 |
| Kans. | 657 | 759 | 383 | 456 | 244 | 253 | 155 | 169 | 37 | 51 |
| Del. | 12 | 15 | 8 | 10 | 6 | 7 | 3 | 4 | 1 | 1 |
| Md. | 67 | 65 | 35 | 29 | 20 | 23 | 14 | 12 | 3 | 4 |
| Va. | 216 | 243 | 135 | 157 | 95 | 92 | 45 | 32 | 10 | 16 |
| W. Va. | 33 | 32 | 14 | 14 | 10 | 8 | 5 | 4 | 3 | 3 |
| N. C. | 739 | 855 | 466 | 483 | 289 | 302 | 126 | 137 | 43 | 45 |
| S. C. | 199 | 228 | 109 | 130 | 75 | 74 | 35 | 33 | 15 | 9 |
| Ga. | 678 | 722 | 404 | 426 | 260 | 266 | 79 | 84 | 22 | 23 |
| Fla. | 151 | 152 | 74 | 84 | 37 | 28 | 14 | 11 | 9 | 6 |
| Ky. | 608 | 734 | 285 | 289 | 198 | 171 | 112 | 92 | 37 | 26 |
| Tenn. | 362 | 450 | 196 | 213 | 141 | 119 | 71 | 51 | 16 | 17 |
| Ala. | 359 | 398 | 226 | 233 | 159 | 147 | 75 | 69 | 17 | 17 |
| Miss. | 204 | 237 | 122 | 131 | 82 | 95 | 32 | 47 | 14 | 16 |
| Ark. | 113 | 129 | 41 | 49 | 31 | 32 | 16 | 18 | 5 | 6 |
| La. | 83 | 81 | 43 | 45 | 14 | 21 | 6 | 8 | 8 | 6 |
| Okla. | 131 | 147 | 75 | 93 | 44 | 47 | 24 | 21 | 4 | 8 |
| Texas | 301 | 378 | 195 | 279 | 143 | 126 | 83 | 90 | 30 | 27 |
| Mont. | 72 | 80 | 33 | 38 | 18 | 22 | 13 | 13 | 7 | 7 |
| Idaho | 44 | 43 | 23 | 33 | 16 | 14 | 10 | 12 | 2 | 2 |
| Wyo. | 12 | 15 | 4 | 5 | .3 | 4 | 3 | 2 | 1 | 1 |
| Colo. | 97 | 123 | 57 | 62 | 42 | 48 | 21 | 23 | 6 | 13 |
| N. Mex. | 23 | 23 | 9 | 10 | 7 | 8 | 5 | 5 | 2 | 2 |
| Ariz. | 21 | 24 | 11 | 12 | 9 | 11 | 8 | 10 | 2 | 1 |
| Utah | 22 | 22 | 9 | 10 | 5 | 5 | 4 | 3 | 1 | 1 |
| Nev. | 2.7 | 3.9 | 1.4 | 2.1 | .7 | 1.1 | .4 | .8 | .1 | .2 |
| Wash. | 28 | 28 | 21 | 19 | 17 | 19 | 7 | 12 | 3 | 3 |
| Oreg. | 36 | 39 | 26 | 28 | 21 | 24 | 13 | 12 | 3 | 2 |
| Calif. | 54 | 53 | 39 | 35 | 33 | 29 | 20 | 18 | 4 | 4 |
| 48 | 24,058.0 | 27,165.0 | 12,023.4 | 12,948.4 | 7,782.9 | 8,041.6 | 4,338.7 | 4,376.2 | 1,378.9 | 1,443.9 |
| States | --- | --- | --- | --- | --- | --- | --- | --- | --- | --- |
| Alaska | .59 | .39 | .21 | .17 | .15 | .11 | .04 | .02 | .01 | .01 |
| Hawaii | 24 | 22 | 14 | 15 | 9 | 8 | 11 | 11 | --- | --- |
| U. S. | 24,083 | 27,187 | 12,037 | 12,964 | 7,792 | 8,050 | 4,340 | 4,377 | 1,379 | 1,444 |

1/ Includes hogs and pigs 220 lbs. and over.

| Farrowings: Number of sows, pigs per litter and pig crop, December 1/-May 1968-70 | | | | | | | | | | | |
|---|----------------|-------|-------|-----------------|-----------------|------|------------|--------|--------|-----------------|--|
| State | Sows farrowing | | | | Pigs per litter | | Pig crop | | | | |
| | 1968 | 1969 | 1970 | Percent of 1969 | 1969 | 1970 | 1968 | 1969 | 1970 | Percent of 1969 | |
| | 1,000 head | | Pct. | | Number | | 1,000 head | | Pct. | | |
| Maine | 1.1 | 1.0 | .9 | 90 | 6.4 | 6.4 | 7.2 | 6.4 | 5.8 | 91 | |
| N. H. | 1.2 | 1.2 | 1.0 | 83 | 7.2 | 7.0 | 8.4 | 8.6 | 7.0 | 81 | |
| Vt. | .6 | .5 | .5 | 100 | 7.8 | 7.2 | 4.5 | 3.9 | 3.6 | 92 | |
| Mass. | 8.2 | 7.5 | 7.4 | 98 | 6.2 | 6.2 | 48 | 46 | 46 | 100 | |
| R. I. | .7 | .9 | 1.1 | 122 | 6.3 | 6.3 | 4.4 | 5.7 | 6.9 | 121 | |
| Conn. | 1.2 | 1.1 | 1.1 | 100 | 6.0 | 6.6 | 7.1 | 6.6 | 7.3 | 111 | |
| N. Y. | 10 | 11 | 10 | 91 | 7.7 | 7.8 | 76 | 85 | 78 | 92 | |
| N. J. | 8.3 | 8.4 | 8.1 | 97 | 6.0 | 5.7 | 52 | 50 | 46 | 92 | |
| Pa. | 53 | 57 | 60 | 106 | 8.0 | 7.5 | 408 | 456 | 450 | 99 | |
| Ohio | 261 | 255 | 265 | 104 | 7.47 | 7.48 | 1,924 | 1,904 | 1,982 | 104 | |
| Ind. | 454 | 440 | 501 | 114 | 7.55 | 7.44 | 3,360 | 3,322 | 3,725 | 112 | |
| Ill. | 815 | 734 | 847 | 115 | 6.92 | 6.85 | 5,817 | 5,080 | 5,801 | 114 | |
| Mich. | 65 | 68 | 82 | 121 | 7.56 | 7.25 | 482 | 514 | 594 | 116 | |
| Wis. | 229 | 224 | 240 | 107 | 7.57 | 7.57 | 1,776 | 1,696 | 1,817 | 107 | |
| Minn. | 420 | 387 | 442 | 114 | 7.44 | 7.43 | 3,212 | 2,879 | 3,285 | 114 | |
| Iowa | 1,635 | 1,508 | 1,681 | 111 | 7.36 | 7.34 | 12,166 | 11,094 | 12,331 | 111 | |
| Mo. | 489 | 474 | 540 | 114 | 7.21 | 7.39 | 3,599 | 3,419 | 3,993 | 117 | |
| N. Dak. | 45 | 41 | 47 | 114 | 7.50 | 7.50 | 344 | 308 | 352 | 114 | |
| S. Dak. | 264 | 244 | 277 | 114 | 7.31 | 7.34 | 1,986 | 1,783 | 2,034 | 114 | |
| Nebr. | 390 | 380 | 420 | 111 | 7.33 | 7.37 | 2,889 | 2,786 | 3,095 | 111 | |
| Kans. | 178 | 182 | 211 | 116 | 7.62 | 7.71 | 1,344 | 1,399 | 1,626 | 116 | |
| Del. | 3.4 | 3.5 | 4.2 | 120 | 7.3 | 7.2 | 24 | 26 | 30 | 115 | |
| Md. | 16 | 17 | 16 | 94 | 7.3 | 7.3 | 120 | 124 | 117 | 94 | |
| Va. | 52 | 55 | 62 | 112 | 7.4 | 7.4 | 380 | 407 | 459 | 113 | |
| W. Va. | 7.2 | 6.8 | 6.8 | 100 | 7.6 | 7.4 | 55 | 52 | 50 | 96 | |
| N. C. | 212 | 225 | 277 | 123 | 7.8 | 7.6 | 1,590 | 1,755 | 2,105 | 120 | |
| S. C. | 50 | 53 | 65 | 123 | 7.3 | 6.9 | 350 | 387 | 448 | 116 | |
| Ga. | 181 | 188 | 199 | 106 | 7.3 | 7.3 | 1,285 | 1,372 | 1,453 | 106 | |
| Fla. | 34 | 36 | 37 | 103 | 7.1 | 7.0 | 231 | 256 | 259 | 101 | |
| Ky. | 167 | 167 | 179 | 107 | 7.5 | 7.3 | 1,219 | 1,252 | 1,307 | 104 | |
| Tenn. | 135 | 116 | 135 | 116 | 7.6 | 7.4 | 945 | 882 | 999 | 113 | |
| Ala. | 110 | 110 | 119 | 108 | 7.3 | 7.4 | 792 | 803 | 881 | 110 | |
| Miss. | 58 | 58 | 72 | 124 | 6.9 | 6.9 | 365 | 400 | 497 | 124 | |
| Ark. | 35 | 33 | 35 | 105 | 7.4 | 7.3 | 248 | 244 | 256 | 105 | |
| La. | 24 | 21 | 22 | 105 | 6.8 | 7.1 | 156 | 143 | 156 | 109 | |
| Okla. | 46 | 42 | 50 | 119 | 7.3 | 7.4 | 336 | 307 | 370 | 120 | |
| Texas | 90 | 95 | 119 | 125 | 7.5 | 7.3 | 639 | 712 | 869 | 122 | |
| Mont. | 18 | 18 | 21 | 117 | 7.4 | 7.6 | 140 | 133 | 160 | 120 | |
| Idaho | 13 | 12 | 14 | 117 | 7.9 | 8.0 | 104 | 95 | 112 | 118 | |
| Wyo. | 3.4 | 3.1 | 3.4 | 110 | 7.1 | 7.4 | 24 | 22 | 25 | 114 | |
| Colo. | 27 | 28 | 33 | 118 | 7.8 | 7.8 | 194 | 218 | 257 | 118 | |
| N. Mex. | 5.4 | 6.5 | 6.6 | 102 | 7.1 | 7.1 | 40 | 46 | 47 | 102 | |
| Ariz. | 5.5 | 6.6 | 7.6 | 115 | 8.2 | 7.9 | 45 | 54 | 60 | 111 | |
| Utah | 5.5 | 5.5 | 5.5 | 100 | 6.8 | 7.1 | 41 | 37 | 39 | 105 | |
| Nev. | 1.2 | .8 | 1.0 | 125 | 5.9 | 7.4 | 7.7 | 4.7 | 7.4 | 157 | |
| Wash. | 8.0 | 8.5 | 9.0 | 106 | 8.2 | 8.0 | 66 | 70 | 72 | 103 | |
| Oreg. | 11 | 11 | 12 | 108 | 8.2 | 8.3 | 94 | 90 | 100 | 111 | |
| Calif. | 15 | 14 | 14 | 100 | 6.7 | 7.4 | 100 | 94 | 104 | 111 | |
| 48 States | 6,663 | 6,366 | 7,168 | 113 | 7.36 | 7.33 | 49,105 | 46,838 | 52,525 | 112 | |
| Alaska | .13 | .14 | .12 | 86 | 6.5 | 6.6 | .78 | .91 | .79 | 87 | |
| Hawaii | 6.0 | 5.4 | 5.2 | 96 | 7.04 | 7.12 | 40 | 38 | 37 | 97 | |
| U. S. | 6,669 | 6,372 | 7,174 | 113 | 7.36 | 7.33 | 49,146 | 46,877 | 52,563 | 112 | |

1/ December preceding year.

Farrowings: Number of sows by quarters, December 1/-February and March-May, 1968-70

| State | December-February | | | | March-May | | | |
|-----------|-------------------|-------|-------|-------------------|------------|-------|-------|-------------------|
| | 1968 | 1969 | 1970 | 1970 as % of 1969 | 1968 | 1969 | 1970 | 1970 as % of 1969 |
| | 1,000 head | | | | 1,000 head | | | |
| | Percent | | | | Percent | | | |
| Maine | .3 | .2 | .2 | 100 | .08 | .08 | .7 | 88 |
| N. H. | .2 | .2 | .2 | 100 | 1.0 | 1.0 | .8 | 80 |
| Vt. | .2 | .1 | .1 | 100 | .4 | .4 | .4 | 100 |
| Mass. | 2.1 | 2.1 | 1.8 | 86 | 6.1 | 5.4 | 5.6 | 104 |
| R. I. | .3 | .3 | .4 | 133 | .4 | .6 | .7 | 117 |
| Conn. | .5 | .4 | .4 | 100 | .7 | .7 | .7 | 100 |
| N. Y. | 4 | 5 | 4 | 80 | 6 | 6 | 6 | 100 |
| N. J. | 3.4 | 3.8 | 3.3 | 87 | 4.9 | 4.6 | 4.8 | 104 |
| Pa. | 24 | 27 | 30 | 111 | 29 | 30 | 30 | 100 |
| Ohio | 115 | 115 | 118 | 103 | 146 | 140 | 147 | 105 |
| Ind. | 219 | 210 | 220 | 105 | 235 | 230 | 281 | 122 |
| Ill. | 307 | 292 | 321 | 110 | 508 | 442 | 526 | 119 |
| Mich. | 29 | 31 | 37 | 119 | 36 | 37 | 45 | 122 |
| Wis. | 80 | 74 | 75 | 101 | 149 | 150 | 165 | 110 |
| Minn. | 141 | 141 | 147 | 104 | 279 | 246 | 295 | 120 |
| Iowa | 480 | 480 | 499 | 104 | 1,155 | 1,028 | 1,182 | 115 |
| Mo. | 190 | 196 | 206 | 105 | 299 | 278 | 334 | 120 |
| N. Dak. | 9 | 13 | 16 | 123 | 36 | 28 | 31 | 111 |
| S. Dak. | 58 | 67 | 70 | 105 | 206 | 177 | 207 | 117 |
| Nebr. | 125 | 131 | 149 | 114 | 265 | 249 | 271 | 109 |
| Kans. | 74 | 76 | 89 | 117 | 104 | 106 | 122 | 115 |
| Del. | 1.5 | 1.9 | 2.4 | 126 | 1.9 | 1.6 | 1.8 | 112 |
| Md. | 7.7 | 8 | 8 | 100 | 8.3 | 9 | 8 | 89 |
| Va. | 27 | 28 | 31 | 111 | 25 | 27 | 31 | 115 |
| W. Va. | 2.4 | 2.2 | 2.3 | 105 | 4.8 | 4.6 | 4.5 | 98 |
| N. C. | 112 | 122 | 141 | 116 | 100 | 103 | 136 | 132 |
| S. C. | 27 | 27 | 35 | 130 | 23 | 26 | 30 | 115 |
| Ga. | 105 | 103 | 100 | 97 | 76 | 85 | 99 | 116 |
| Fla. | 17 | 19 | 18 | 95 | 17 | 17 | 19 | 112 |
| Ky. | 79 | 92 | 81 | 88 | 88 | 75 | 98 | 131 |
| Tenn. | 71 | 58 | 69 | 119 | 64 | 58 | 66 | 114 |
| Ala. | 60 | 60 | 65 | 108 | 50 | 50 | 54 | 108 |
| Miss. | 29 | 31 | 37 | 119 | 29 | 27 | 35 | 130 |
| Ark. | 19 | 16 | 16 | 100 | 16 | 17 | 19 | 112 |
| La. | 13 | 12 | 13 | 108 | 11 | 9 | 9 | 100 |
| Okla. | 23 | 20 | 23 | 115 | 23 | 22 | 27 | 123 |
| Texas | 47 | 48 | 58 | 121 | 43 | 47 | 61 | 130 |
| Mont. | 7 | 8 | 10 | 125 | 11 | 10 | 11 | 110 |
| Idaho | 5 | 6 | 7 | 117 | 8 | 6 | 7 | 117 |
| Wyo. | 1.1 | 1.1 | 1.2 | 109 | 2.3 | 2.0 | 2.2 | 110 |
| Colo. | 12 | 13 | 15 | 115 | 15 | 15 | 18 | 120 |
| N. Mex. | 2.8 | 3.2 | 3.3 | 103 | 2.6 | 3.3 | 3.3 | 100 |
| Ariz. | 2.5 | 3.5 | 3.7 | 106 | 3.0 | 3.1 | 3.9 | 126 |
| Utah | 2.4 | 2.6 | 2.5 | 96 | 3.1 | 2.9 | 3.0 | 103 |
| Nev. | .4 | .3 | .5 | 167 | .8 | .5 | .5 | 100 |
| Wash. | 3.8 | 4.3 | 4.5 | 105 | 4.2 | 4.2 | 4.5 | 107 |
| Oreg. | 6 | 6 | 6 | 100 | 5 | 5 | 6 | 120 |
| Calif. | 8 | 7 | 7 | 100 | 7 | 7 | 7 | 100 |
| 48 States | 2,554 | 2,568 | 2,748 | 107 | 4,109 | 3,798 | 4,420 | 116 |
| Alaska | .05 | .05 | .05 | 100 | .08 | .09 | .07 | 78 |
| Hawaii | 3.0 | 2.7 | 2.6 | 96 | 3.0 | 2.7 | 2.6 | 96 |
| U. S. | 2,557 | 2,571 | 2,751 | 107 | 4,112 | 3,801 | 4,423 | 116 |

1/ December preceding year.

| Farrowings: Number of sows, pigs per litter and pig crop, June-November, 1968-70 | | | | | | | | |
|--|----------------|-------|---------|----------|--------|------------|----------|--------|
| State | Sows farrowing | | | | Pigs | | Pig crop | |
| | 1968 | 1969 | 1970 1/ | As % of: | per | 1968 | 1969 | |
| | Number | | Number | 1969 | litter | 1968 | 1969 | |
| | 1,000 head | | Percent | | Number | 1,000 head | | |
| Maine | 1.1 | 1.1 | 1.0 | 91 | 8.0 | 7.5 | 8.8 | 8.2 |
| N. H. | 1.5 | 1.7 | 1.5 | 88 | 6.8 | 5.4 | 10 | 9.2 |
| Vt. | .8 | .9 | .9 | 100 | 7.5 | 7.5 | 6.0 | 6.8 |
| Mass. | 8.5 | 8.0 | 8.0 | 100 | 6.4 | 6.9 | 54 | 55 |
| R. I. | .8 | .9 | 1.2 | 133 | 5.5 | 7.2 | 4.4 | 6.5 |
| Conn. | 1.0 | .9 | .9 | 100 | 6.4 | 6.5 | 6.4 | 5.8 |
| N. Y. | 10 | 9.5 | 9.2 | 97 | 7.5 | 7.7 | 75 | 73 |
| N. J. | 7.2 | 6.7 | 7.0 | 104 | 6.3 | 5.7 | 45 | 38 |
| Pa. | 50 | 53 | 58 | 109 | 7.5 | 7.7 | 375 | 408 |
| Ohio | 267 | 264 | 288 | 109 | 7.47 | 7.45 | 1,994 | 1,967 |
| Ind. | 450 | 425 | 476 | 112 | 7.36 | 7.68 | 3,314 | 3,265 |
| Ill. | 807 | 729 | 860 | 118 | 7.15 | 7.10 | 5,767 | 5,175 |
| Mich. | 70 | 77 | 86 | 112 | 7.40 | 7.40 | 518 | 570 |
| Wis. | 219 | 211 | 237 | 112 | 7.76 | 7.81 | 1,699 | 1,648 |
| Minn. | 349 | 336 | 379 | 113 | 7.44 | 7.38 | 2,597 | 2,479 |
| Iowa | 1,425 | 1,261 | 1,419 | 113 | 7.40 | 7.17 | 10,552 | 9,047 |
| Mo. | 525 | 483 | 562 | 116 | 7.25 | 7.07 | 3,805 | 3,414 |
| N. Dak. | 26 | 25 | 35 | 140 | 7.50 | 7.40 | 195 | 185 |
| S. Dak. | 159 | 146 | 189 | 129 | 7.45 | 7.39 | 1,185 | 1,079 |
| Nebr. | 319 | 288 | 378 | 131 | 7.52 | 7.44 | 2,399 | 2,143 |
| Kans. | 172 | 161 | 199 | 124 | 7.66 | 7.68 | 1,317 | 1,237 |
| Del. | 4.7 | 5.2 | 6.0 | 115 | 7.1 | 7.5 | 33 | 39 |
| Md. | 20 | 20 | 22 | 110 | 7.3 | 6.7 | 146 | 134 |
| Va. | 57 | 55 | 64 | 116 | 7.5 | 7.7 | 428 | 424 |
| W. Va. | 7.7 | 7.3 | 8.0 | 110 | 7.7 | 7.9 | 59 | 58 |
| N. C. | 151 | 157 | 190 | 121 | 7.5 | 7.5 | 1,132 | 1,178 |
| S. C. | 45 | 45 | 60 | 133 | 7.1 | 7.1 | 320 | 320 |
| Ga. | 161 | 171 | 188 | 110 | 7.2 | 7.3 | 1,159 | 1,248 |
| Fla. | 36 | 35 | 40 | 114 | 6.9 | 6.6 | 248 | 231 |
| Ky. | 152 | 149 | 174 | 117 | 7.3 | 7.7 | 1,110 | 1,147 |
| Tenn. | 124 | 114 | 145 | 127 | 7.2 | 7.7 | 893 | 878 |
| Ala. | 102 | 98 | 112 | 114 | 7.2 | 7.3 | 734 | 715 |
| Miss. | 52 | 53 | 69 | 130 | 7.0 | 7.1 | 364 | 376 |
| Ark. | 45 | 43 | 55 | 128 | 7.0 | 7.5 | 315 | 322 |
| La. | 19 | 20 | 21 | 105 | 6.4 | 7.0 | 122 | 140 |
| Okla. | 47 | 43 | 56 | 130 | 7.2 | 7.3 | 338 | 314 |
| Texas | 114 | 106 | 149 | 141 | 7.1 | 7.4 | 809 | 784 |
| Mont. | 18 | 17 | 22 | 129 | 7.9 | 7.8 | 142 | 133 |
| Idaho | 12 | 12 | 14 | 117 | 7.9 | 8.2 | 95 | 98 |
| Wyo. | 2.6 | 2.9 | 3.8 | 131 | 7.8 | 6.9 | 20 | 20 |
| Colo. | 29 | 32 | 37 | 116 | 7.3 | 7.5 | 212 | 240 |
| N. Mex. | 5.6 | 6.1 | 6.4 | 105 | 7.5 | 7.4 | 42 | 45 |
| Ariz. | 6.6 | 6.6 | 7.7 | 117 | 7.6 | 7.8 | 50 | 51 |
| Utah | 6.5 | 6.0 | 6.5 | 108 | 7.5 | 7.9 | 49 | 47 |
| Nev. | 1.1 | .9 | 1.2 | 133 | 7.5 | 7.5 | 8.2 | 6.8 |
| Wash. | 7.4 | 9.0 | 11 | 123 | 8.4 | 7.0 | 62 | 63 |
| Oreg. | 12 | 12 | 13 | 108 | 8.5 | 8.3 | 102 | 100 |
| Calif. | 16 | 14 | 14 | 100 | 6.8 | 7.2 | 109 | 101 |
| 48 States | 6,123 | 5,729 | 6,691 | 117 | 7.35 | 7.34 | 45,028 | 42,032 |
| Alaska | .15 | .14 | .19 | 136 | 6.1 | 5.8 | .92 | .81 |
| Hawaii | 6.0 | 5.4 | 5.2 | 96 | 7.00 | 7.20 | 42 | 38 |
| U. S. | 6,129 | 5,735 | 6,697 | 117 | 7.35 | 7.34 | 45,071 | 42,071 |

1/ Intentions.

HOGS AND PIGS, June 1970

Farrowings: Number of sows, by quarters, June-August and September-November
1968-69

| State | June-August | | | September-November | | |
|-----------|-------------|-------|----------------------|--------------------|-------|----------------------|
| | 1968 | 1969 | 1969 as % of 1968 | 1968 | 1969 | 1969 as % of 1968 |
| | 1,000 head | | Percent | 1,000 head | | Percent |
| Maine | .9 | 0.8 | 89 | .2 | 0.3 | 150 |
| N. H. | .9 | 1.2 | 133 | .6 | .5 | 83 |
| Vt. | .5 | .6 | 120 | .3 | .3 | 100 |
| Mass. | 5.7 | 4.8 | 84 | 2.8 | 3.2 | 114 |
| P. I. | .5 | .6 | 120 | .3 | .3 | 100 |
| Conn. | .4 | .4 | 100 | .6 | .5 | 83 |
| N. Y. | 5.0 | 5.0 | 100 | 5.0 | 4.5 | 90 |
| N. J. | 3.8 | 3.6 | 95 | 3.4 | 3.1 | 91 |
| Pa. | 24 | 28 | 117 | 26 | 25 | 96 |
| Ohio | 142 | 139 | 98 | 125 | 125 | 100 |
| Ind. | 262 | 241 | 92 | 188 | 184 | 98 |
| Ill. | 425 | 374 | 88 | 382 | 355 | 93 |
| Mich. | 41 | 52 | 127 | 29 | 25 | 86 |
| Wis. | 108 | 104 | 96 | 111 | 107 | 96 |
| Minn. | 190 | 190 | 100 | 159 | 146 | 92 |
| Iowa | 718 | 625 | 87 | 707 | 636 | 90 |
| Mo. | 249 | 229 | 92 | 276 | 254 | 92 |
| N. Dak. | 17 | 17 | 100 | 9 | 8 | 89 |
| S. Dak. | 68 | 61 | 90 | 91 | 85 | 93 |
| Nebr. | 134 | 122 | 91 | 185 | 166 | 90 |
| Kans. | 77 | 70 | 91 | 95 | 91 | 96 |
| Del. | 3.0 | 3.6 | 120 | 1.7 | 1.6 | 94 |
| Md. | 12 | 13 | 108 | 8 | 7 | 88 |
| Va. | 30 | 30 | 100 | 27 | 25 | 93 |
| W. Va. | 3.1 | 3.5 | 113 | 4.6 | 3.8 | 83 |
| N. C. | 80 | 86 | 108 | 71 | 71 | 100 |
| S. C. | 23 | 26 | 113 | 22 | 19 | 86 |
| Ga. | 84 | 92 | 110 | 77 | 79 | 103 |
| Fla. | 18 | 19 | 106 | 18 | 16 | 89 |
| Ky. | 88 | 77 | 88 | 64 | 72 | 112 |
| Tenn. | 66 | 63 | 95 | 58 | 51 | 88 |
| Ala. | 59 | 53 | 90 | 43 | 45 | 105 |
| Miss. | 31 | 30 | 97 | 21 | 23 | 110 |
| Ark. | 24 | 22 | 92 | 21 | 21 | 100 |
| La. | 11 | 11 | 100 | 8 | 9 | 112 |
| Okla. | 23 | 22 | 96 | 24 | 21 | 88 |
| Texas | 62 | 57 | 92 | 52 | 49 | 94 |
| Mont. | 10 | 10 | 100 | 8 | 7 | 88 |
| Idaho | 6 | 6 | 100 | 6 | 6 | 100 |
| Wyo. | 1.3 | 1.6 | 123 | 1.3 | 1.3 | 100 |
| Colo. | 13 | 16 | 123 | 16 | 16 | 100 |
| N. Mex. | 2.9 | 3.2 | 110 | 2.7 | 2.9 | 107 |
| Ariz. | 3.4 | 3.5 | 103 | 3.2 | 3.1 | 97 |
| Utah | 3.7 | 2.9 | 78 | 2.8 | 3.1 | 111 |
| Nev. | .6 | .5 | 83 | .5 | .4 | 80 |
| Wash. | 3.0 | 4.0 | 133 | 4.4 | 5.0 | 114 |
| Oreg. | 7 | 7 | 100 | 5 | 5 | 100 |
| Calif. | 8 | 7 | 88 | 8 | 7 | 88 |
| 48 States | 3,149 | 2,939 | 93 | 2,974 | 2,790 | 94 |
| Alaska | .09 | .10 | 111 | .06 | .04 | 67 |
| Hawaii | 3.0 | 2.8 | 93 | 3.0 | 2.6 | 87 |
| U. S. | 3,152 | 2,942 | 93 | 2,977 | 2,793 | 94 |

Hogs and Pigs: Number on farms, breeding, market and total,
March 1, 1969 and 1970, selected States

| State | For breeding | | | Market | | | Total | | |
|-----------------|--------------|------------|--------------|------------|---------|--------------|---------|--------|--------------|
| | 1970 | | | 1970 | | | 1970 | | |
| | 1969 | Number | As % of 1969 | 1969 | Number | As % of 1969 | 1969 | Number | As % of 1969 |
| | | 1,000 head | Percent | 1,000 head | Percent | 1,000 head | Percent | | |
| Ohio | 362 | 378 | 104 | 2,052 | 2,060 | 100 | 2,414 | 2,438 | 101 |
| Ind. | 675 | 668 | 99 | 3,543 | 3,508 | 99 | 4,218 | 4,176 | 99 |
| Ill. | 1,081 | 1,134 | 105 | 5,095 | 5,166 | 101 | 6,176 | 6,300 | 102 |
| Wis. | 314 | 305 | 97 | 1,115 | 1,081 | 97 | 1,429 | 1,386 | 97 |
| Minn. | 526 | 559 | 106 | 2,317 | 2,369 | 102 | 2,843 | 2,928 | 103 |
| Iowa | 2,463 | 2,389 | 97 | 10,498 | 10,183 | 97 | 12,961 | 12,572 | 97 |
| Miss. | 738 | 768 | 104 | 3,363 | 3,169 | 94 | 4,101 | 3,937 | 96 |
| S. Dak. | 326 | 351 | 108 | 1,304 | 1,246 | 96 | 1,630 | 1,597 | 98 |
| Nebr. | 537 | 541 | 101 | 2,532 | 2,467 | 97 | 3,069 | 3,008 | 98 |
| Kans. | 255 | 300 | 118 | 1,443 | 1,517 | 105 | 1,698 | 1,817 | 107 |
| Total 10 States | 7,277 | 7,393 | 102 | 33,262 | 32,766 | 99 | 40,539 | 40,159 | 99 |
| Hawaii | 10 | 10 | 100 | 51 | 46 | 90 | 61 | 56 | 92 |

Market Hogs and Pigs: Number on farms, by weight groups,
March 1, 1969 and 1970, selected States

| State | Under 60 lbs. | | 60-119 lbs. | | 120-179 lbs. | | 180-219 lbs. | | 220 lbs. and over | |
|-----------------|---------------|--------|-------------|-------|--------------|-------|--------------|-------|-------------------|------|
| | 1970 | | 1970 | | 1970 | | 1970 | | 1970 | |
| | 1969 | 1970 | 1969 | 1970 | 1969 | 1970 | 1969 | 1970 | 1969 | 1970 |
| | 1,000 head | | | | | | | | | |
| Ohio | 759 | 762 | 482 | 486 | 503 | 505 | 267 | 268 | 41 | 39 |
| Ind. | 1,453 | 1,403 | 779 | 737 | 772 | 807 | 461 | 491 | 78 | 70 |
| Ill. | 1,794 | 1,937 | 1,146 | 1,137 | 1,299 | 1,266 | 713 | 671 | 143 | 155 |
| Wis. | 463 | 470 | 226 | 216 | 247 | 232 | 156 | 141 | 23 | 22 |
| Minn. | 927 | 971 | 440 | 474 | 510 | 498 | 371 | 355 | 69 | 71 |
| Iowa | 3,643 | 3,717 | 2,131 | 2,138 | 2,782 | 2,546 | 1,575 | 1,477 | 367 | 305 |
| Miss. | 1,312 | 1,252 | 790 | 760 | 757 | 697 | 370 | 349 | 134 | 111 |
| S. Dak. | 456 | 480 | 287 | 243 | 346 | 299 | 169 | 174 | 46 | 50 |
| Nebr. | 899 | 1,011 | 570 | 580 | 633 | 530 | 354 | 284 | 76 | 62 |
| Kans. | 577 | 622 | 318 | 334 | 289 | 303 | 216 | 212 | 43 | 46 |
| Total 10 States | 12,283 | 12,625 | 7,169 | 7,105 | 8,138 | 7,683 | 4,652 | 4,422 | 1,020 | 931 |
| Hawaii | 23 | 24 | 17 | 14 | 10 | 7 | 1 | 1 | | |

Hogs and Pigs: Number on farms, breeding, market and total,
June 1, 1969 and 1970, selected States

| State | For breeding | | Market | | Total | | | | |
|-----------------|--------------|--------------|------------|--------------|------------|--------------|--------|--------|-----|
| | 1969 | 1970 | 1969 | 1970 | 1969 | 1970 | | | |
| | Number | As % of 1969 | Number | As % of 1969 | Number | As % of 1969 | | | |
| | 1,000 head | Percent | 1,000 head | Percent | 1,000 head | Percent | | | |
| Ohio | 395 | 428 | 108 | 2,154 | 2,248 | 104 | 2,549 | 2,676 | 105 |
| Ind. | 660 | 781 | 118 | 3,738 | 4,101 | 110 | 4,398 | 4,882 | 111 |
| Ill. | 1,023 | 1,156 | 113 | 5,372 | 6,070 | 113 | 6,395 | 7,226 | 113 |
| Wis. | 322 | 338 | 105 | 1,466 | 1,539 | 105 | 1,788 | 1,877 | 105 |
| Minn. | 547 | 639 | 117 | 2,870 | 3,120 | 109 | 3,417 | 3,759 | 110 |
| Iowa | 2,199 | 2,517 | 114 | 12,366 | 13,213 | 107 | 14,565 | 15,730 | 108 |
| Mo. | 659 | 775 | 118 | 3,592 | 4,071 | 113 | 4,251 | 4,846 | 114 |
| S. Dak. | 331 | 365 | 110 | 1,802 | 2,067 | 115 | 2,133 | 2,432 | 114 |
| Nebr. | 547 | 568 | 104 | 2,869 | 2,985 | 104 | 3,416 | 3,553 | 104 |
| Kans. | 261 | 310 | 119 | 1,476 | 1,688 | 114 | 1,737 | 1,998 | 115 |
| Total 10 States | 6,944 | 7,877 | 113 | 37,705 | 41,102 | 109 | 44,649 | 48,979 | 110 |
| Hawaii | 10 | 9 | 90 | 48 | 46 | 96 | 58 | 55 | 95 |

Market Hogs and Pigs: Number on farms, by weight groups,
June 1, 1969 and 1970, selected States

| State | Under 60 lbs. | | 60-119 lbs. | | 120-179 lbs. | | 180-219 lbs. | | 220 lbs. and over | |
|-----------------|---------------|--------|-------------|-------|--------------|-------|--------------|-------|-------------------|-------|
| | 1969 | 1970 | 1969 | 1970 | 1969 | 1970 | 1969 | 1970 | 1969 | 1970 |
| | 1,000 head | | | | | | | | | |
| Ohio | 948 | 1,012 | 593 | 618 | 409 | 427 | 172 | 169 | 32 | 22 |
| Ind. | 1,525 | 1,641 | 1,028 | 1,230 | 755 | 779 | 355 | 369 | 75 | 82 |
| Ill. | 2,445 | 3,035 | 1,370 | 1,396 | 886 | 1,032 | 510 | 486 | 161 | 121 |
| Wis. | 895 | 931 | 271 | 293 | 183 | 192 | 88 | 92 | 29 | 31 |
| Minn. | 1,535 | 1,685 | 674 | 717 | 359 | 437 | 230 | 187 | 72 | 94 |
| Iowa | 6,307 | 7,003 | 2,844 | 2,907 | 1,731 | 1,718 | 1,113 | 1,189 | 371 | 396 |
| Mo. | 1,724 | 2,117 | 772 | 835 | 611 | 623 | 359 | 366 | 126 | 130 |
| S. Dak. | 1,090 | 1,281 | 361 | 455 | 180 | 165 | 108 | 83 | 63 | 83 |
| Nebr. | 1,463 | 1,507 | 674 | 716 | 402 | 418 | 244 | 254 | 86 | 90 |
| Kans. | 657 | 759 | 383 | 456 | 244 | 253 | 155 | 169 | 37 | 51 |
| Total 10 States | 18,589 | 20,971 | 8,970 | 9,623 | 5,760 | 6,044 | 3,334 | 3,364 | 1,052 | 1,100 |
| Hawaii | 24 | 22 | 14 | 15 | 9 | 8 | 1 | 1 | | |

Farrowings: Number of sows, pigs per litter and pig crop,
December 1/-February 1968-70, selected States

| State | Sows farrowing | | | Pigs per litter | | Pig crop 2/ | | | |
|-----------------|----------------|-------|---------|-----------------|------|-------------|--------|---------|-----|
| | 1968 | 1969 | 1970 | As % of | | 1969 | 1970 | | |
| | Number | | | 1969 | 1970 | Number | | | |
| | 1,000 head | | Percent | Number | | 1,000 head | | Percent | |
| Ohio | 115 | 115 | 118 | 103 | 7.30 | 7.20 | 840 | 850 | 101 |
| Ind. | 219 | 210 | 220 | 105 | 7.58 | 7.34 | 1,592 | 1,615 | 101 |
| Ill. | 307 | 292 | 321 | 110 | 6.80 | 6.60 | 1,986 | 2,119 | 107 |
| Wis. | 80 | 74 | 75 | 101 | 7.62 | 7.64 | 564 | 573 | 102 |
| Minn. | 141 | 141 | 147 | 104 | 7.42 | 7.50 | 1,046 | 1,102 | 105 |
| Iowa | 480 | 480 | 499 | 104 | 7.05 | 7.30 | 3,384 | 3,643 | 108 |
| Mo. | 190 | 196 | 206 | 105 | 7.33 | 6.98 | 1,437 | 1,438 | 100 |
| S. Dak. | 58 | 67 | 70 | 105 | 7.33 | 7.42 | 491 | 519 | 106 |
| Nebr. | 125 | 131 | 149 | 114 | 7.30 | 7.68 | 956 | 1,144 | 120 |
| Kans. | 74 | 76 | 89 | 117 | 7.71 | 7.55 | 586 | 672 | 115 |
| Total 10 States | 1,789 | 1,782 | 1,894 | 106 | 7.23 | 7.22 | 12,882 | 13,675 | 106 |
| Hawaii | 3.0 | 2.7 | 2.6 | 96 | 6.89 | 7.31 | 19 | 19 | 100 |

1/ December preceding year.

2/ Number of pigs born December through February that were on hand March 1 or had been sold.

Farrowings: Number of sows, pigs per litter and pig crop,
March-May 1968-70, selected States

| State | Sows farrowing | | | Pigs per litter | | Pig crop 1/ | | | |
|-----------------|----------------|-------|---------|-----------------|------|-------------|--------|---------|-----|
| | 1968 | 1969 | 1970 | As % of | | 1969 | 1970 | | |
| | Number | | | 1969 | 1970 | Number | | | |
| | 1,000 head | | Percent | Number | | 1,000 head | | Percent | |
| Ohio | 146 | 140 | 147 | 105 | 7.60 | 7.70 | 1,064 | 1,132 | 106 |
| Ind. | 235 | 230 | 281 | 122 | 7.52 | 7.51 | 1,730 | 2,110 | 122 |
| Ill. | 508 | 442 | 526 | 119 | 7.00 | 7.00 | 3,094 | 3,682 | 119 |
| Wis. | 149 | 150 | 165 | 110 | 7.55 | 7.54 | 1,132 | 1,244 | 110 |
| Minn. | 279 | 246 | 295 | 120 | 7.45 | 7.40 | 1,833 | 2,183 | 119 |
| Iowa | 1,155 | 1,028 | 1,182 | 115 | 7.50 | 7.35 | 7,710 | 8,688 | 113 |
| Mo. | 299 | 278 | 334 | 120 | 7.13 | 7.65 | 1,982 | 2,555 | 129 |
| S. Dak. | 206 | 177 | 207 | 117 | 7.30 | 7.32 | 1,292 | 1,515 | 117 |
| Nebr. | 265 | 249 | 271 | 109 | 7.35 | 7.20 | 1,830 | 1,951 | 107 |
| Kans. | 104 | 106 | 122 | 115 | 7.67 | 7.82 | 813 | 954 | 117 |
| Total 10 States | 3,346 | 3,046 | 3,530 | 116 | 7.38 | 7.37 | 22,480 | 26,014 | 116 |
| Hawaii | 3.0 | 2.7 | 2.6 | 96 | 7.04 | 7.10 | 19 | 18 | 95 |

1/ Number of pigs born March through May that were on hand June 1 or had been sold.

Farrowings: Number of sows, pigs per litter and pig crop, June-August, 1968-70, selected States

| State | Sows farrowing | | | 1969 | | |
|-----------------|----------------|------------|-------------------|-----------------|--------------------|---------------------------|
| | 1968 | 1969 | 1970 1/ Number | As % of 1969 | Pigs per litter | Pig crop 2/ 1,000 head |
| | | 1,000 head | | Percent | Number | 1,000 head |
| Ohio | 142 | 139 | 153 | 110 | 7.50 | 1,042 |
| Indiana | 262 | 241 | 270 | 112 | 7.75 | 1,868 |
| Illinois | 425 | 374 | 441 | 118 | 7.10 | 2,655 |
| Wisconsin | 108 | 104 | 114 | 110 | 7.87 | 818 |
| Minnesota | 190 | 190 | 211 | 111 | 7.50 | 1,425 |
| Iowa | 718 | 625 | 719 | 115 | 7.20 | 4,500 |
| Missouri | 249 | 229 | 270 | 118 | 7.13 | 1,633 |
| South Dakota | 68 | 61 | 79 | 130 | 7.50 | 458 |
| Nebraska | 134 | 122 | 170 | 139 | 7.50 | 915 |
| Kansas | 77 | 70 | 90 | 128 | 7.65 | 536 |
| Total 10 States | 2,373 | 2,155 | 2,517 | 117 | 7.35 | 15,850 |

Hawaii : 3.0 2.8 2.6 93 6.80 19
 1/ Intentions.
 2/ Number of pigs born June through August that were on hand September 1 or had been sold.

Farrowings: Number of sows, pigs per litter and pig crop September-November 1968-70, selected States

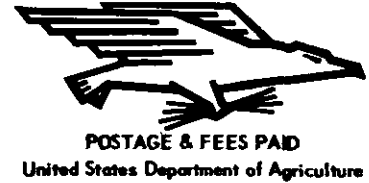
| State | Sows farrowing | | | 1969 | | |
|-----------------|----------------|------------|-------------------|-----------------|--------------------|---------------------------|
| | 1968 | 1969 | 1970 1/ Number | As % of 1969 | Pigs per litter | Pig crop 2/ 1,000 head |
| | | 1,000 head | | Percent | Number | 1,000 head |
| Ohio | 125 | 125 | 135 | 108 | 7.40 | 925 |
| Indiana | 188 | 184 | 206 | 112 | 7.59 | 1,397 |
| Illinois | 382 | 355 | 419 | 118 | 7.10 | 2,520 |
| Wisconsin | 111 | 107 | 123 | 115 | 7.76 | 830 |
| Minnesota | 159 | 146 | 168 | 115 | 7.22 | 1,054 |
| Iowa | 707 | 636 | 700 | 110 | 7.15 | 4,547 |
| Missouri | 276 | 254 | 292 | 115 | 7.01 | 1,781 |
| South Dakota | 91 | 85 | 110 | 129 | 7.31 | 621 |
| Nebraska | 185 | 166 | 208 | 125 | 7.40 | 1,228 |
| Kansas | 95 | 91 | 109 | 120 | 7.70 | 701 |
| Total 10 States | 2,319 | 2,149 | 2,470 | 115 | 7.26 | 15,604 |

Hawaii : 3.0 2.6 2.6 100 7.40 19
 1/ Intentions
 2/ Number of pigs born September through November that were on hand December 1 or had been sold.

UNITED STATES DEPARTMENT OF AGRICULTURE
 STATISTICAL REPORTING SERVICE
 WASHINGTON, D. C. 20250

OFFICIAL BUSINESS

PENALTY FOR PRIVATE USE, \$300



Hogs and Pigs: Number on farms, pig crop, inshipments, death loss and marketings, March-May 1969 and 1970, 10 States ^{1/}

| Item | 1969 | 1970 | |
|---|--------|-------------------|----------------|
| | | Number | As % of 1969 |
| | | <u>1,000 head</u> | <u>Percent</u> |
| Hogs and Pigs on farms March 1 | 40,539 | 40,159 | 99 |
| Pig Crop March-May | 22,480 | 26,014 | 116 |
| Inshipments ^{2/} March-May | 341 | 320 | 94 |
| Slaughter ^{3/} March-May | 17,484 | 16,334 | 93 |
| Death Loss March-May | 1,227 | 1,180 | 96 |
| Hogs and Pigs on farms June 1 | 44,649 | 48,979 | 110 |

^{1/} See page 12 for listing of 10 States.

^{2/} Includes only those shipped in from States outside the 10 States.

^{3/} Includes farm slaughter, and feeder pig outshipments to States other than the 10 States.