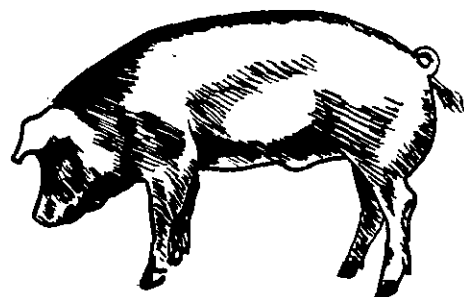


# HOGS AND PIGS

SEPTEMBER 1970 (10 Corn Belt States)

## In this issue:

- ★ September 1 Inventory
- ★ Sows Farrowing
- ★ Pig Crop



Release:  
September 22, 1970  
3:00 P.M. EDT

Hogs and pigs on farms on September 1, 1970 in the 10 Corn Belt States are estimated at 50.6 million head--13 percent more than a year earlier, according to the Crop Reporting Board. Breeding hogs are estimated at 7.2 million, up 11 percent from a year earlier, while market hogs, at 43.4 million are up 13 percent. The 10 States included in this report are Ohio, Indiana, Illinois, Wisconsin, Minnesota, Iowa, Missouri, South Dakota, Nebraska, and Kansas.

The June-August 1970 pig crop is estimated at 18.1 million head, 14 percent above the same period in 1969. A total of 2.5 million sows farrowed during that period. This number is 17 percent more than a year earlier. Pigs per litter averaged 7.18 compared with 7.35 during June-August 1969.

Hog producers in the 10 States intend to farrow 13 percent more sows during September-November 1970 and 6 percent more during December 1970-February 1971 compared with the same periods a year earlier.

## HOGS AND PIGS ON FARMS UP 13 PERCENT

The number of hogs and pigs on farms, September 1 in the 10 Corn Belt States, is up 13 percent from a year earlier. Hogs and pigs on farms in Iowa, the Nation's leading hog producing State, increased 10 percent from a year earlier. In Kansas, the number was up 25 percent, the largest percentage increase for any of the ten States. Missouri was up 20 percent; South Dakota, 17 percent; Illinois, Nebraska and Minnesota, each 14 percent; Indiana, 9 percent; Ohio, 7 percent; and Wisconsin, 6 percent.

Market hogs in the 10 States are estimated at 43,358,000 head, an increase of 13 percent from a year earlier. All weight groups are above a year earlier. By weight groups, the estimates and increases from September 1, 1969 are as follows: Under 60 pounds, 16,560,000 head, 15 percent; 60-119 pounds, 11,212,000, 17 percent; 120-179 pounds, 9,453,000, 10 percent; 180-219 pounds, 5,167,000, 4 percent; and 220 pounds and over, 966,000, 4 percent.

#### JUNE-AUGUST PIG CROP UP 14 PERCENT

The June-August pig crop in the 10 States is estimated at 18,088,000 head, 14 percent above a year earlier. The number of sows farrowing was 2,520,000 head--up 17 percent. Farrowings in June-August this year were up 59 percent in Nebraska, 30 percent in South Dakota and 28 percent in Kansas. Increases in the other 7 States ranged from 25 percent in Missouri to 6 percent in Indiana. The average number of pigs per litter at 7.18 was down from the 7.35 last year.

#### SEPTEMBER-NOVEMBER INTENTIONS UP 13 PERCENT

Sows and gilts bred for September-November farrowings in the 10 States total 2,426,000 head, 13 percent more than farrowed in the same period last year. Farmers in all 10 States reported more sows to farrow than a year earlier. The increases ranged from 25 percent in Nebraska to 7 percent in Indiana.

#### DECEMBER 1970-FEBRUARY 1971 INTENTIONS UP 6 PERCENT

Farrowing intentions for the December 1970-February 1971 quarter in the 10 Corn Belt States are up 6 percent from a year earlier. Indiana is unchanged, and Wisconsin is 3 percent below a year ago. All other States expect increases ranging from 19 percent in Nebraska to 2 percent in Ohio.

\*\*\*\*\*

Hogs and Pigs: Number on farms, sows farrowing and pig crop  
10 States, 1968-71

Item	1968	1969	1970	1971	1970 as	
					percent of 1969	percent of 1970
----- 1,000 head ----- Percent -----						
<u>Number on Farms-September 1:</u>						
All Hogs and pigs .....	48,290	44,918	50,566	---	113	---
Kept for breeding .....	6,697	6,493	7,208	---	111	---
Market .....	41,593	38,425	43,358	---	113	---
<u>Market hogs and pigs</u>						
<u>by weight groups</u>						
Under 60 pounds .....	15,014	14,351	16,560	---	115	---
60-119 pounds .....	10,687	9,600	11,212	---	117	---
120-179 pounds .....	9,693	8,569	9,453	---	110	---
180-219 pounds .....	5,249	4,980	5,167	---	104	---
220 pounds and over .....	950	925	966	---	104	---
<u>Sows farrowing</u>						
December 1/-February ..:	1,789	1,782	1,894	<u>2/2,000</u>	106	106
March-May .....	3,346	3,046	3,530	---	116	---
June-August .....	2,373	2,155	2,520	---	117	---
September-November .....	2,319	2,149	<u>2/2,426</u>	---	113	---
<u>Pig Crop</u>						
December 1/-February ..:	13,024	12,882	13,675	---	106	---
March-May .....	25,049	22,480	26,014	---	116	---
June-August .....	17,546	15,850	18,088	---	114	---
September-November .....	17,083	15,604	---	---	---	---
<u>Pigs per litter</u>						
	<u>Number</u>	<u>Number</u>	<u>Number</u>	<u>Number</u>		
December 1/-February ..:	7.28	7.23	7.22	---	100	---
March-May .....	7.49	7.38	7.37	---	100	---
June-August .....	7.39	7.35	7.18	---	98	---
September-November .....	7.37	7.26	---	---	---	---

1/ December preceding year.  
2/ Intentions.

Hogs and Pigs: Number on farms, breeding, market, and total,  
June 1, 1969 and 1970, selected States

State	Breeding			Market			Total		
	1969	1970		1969	1970		1969	1970	
		Number	As % of		Number	As % of		Number	As % of
		1969	1969		1969	1969			
	1,000 head	Percent	1,000 head	Percent	1,000 head	Percent			
Ohio .....	395	428	108	2,154	2,248	104	2,549	2,676	105
Indiana .....	660	781	118	3,738	4,101	110	4,398	4,882	111
Illinois .....	1,023	1,156	113	5,372	6,070	113	6,395	7,226	113
Wisconsin ...	322	338	105	1,466	1,539	105	1,788	1,877	105
Minnesota ...	547	639	117	2,870	3,120	109	3,417	3,759	110
Iowa .....	2,199	2,517	114	12,366	13,213	107	14,565	15,730	108
Missouri .....	659	775	118	3,592	4,071	113	4,251	4,846	114
S. Dakota ...	331	365	110	1,802	2,067	115	2,133	2,432	114
Nebraska .....	547	568	104	2,869	2,985	104	3,416	3,553	104
Kansas .....	261	310	119	1,476	1,688	114	1,737	1,998	115
Total 10 States .....	6,944	7,877	113	37,705	41,102	109	44,649	48,979	110
Hawaii .....	10	9	90	48	46	96	58	55	95

Market Hogs and Pigs: Number on farms, by weight groups,  
June 1, 1969 and 1970, selected States

State	Under 60 lbs.		60-119 lbs.		120-179 lbs.		180-219 lbs.		220 lbs. and over											
	1969	1970	1969	1970	1969	1970	1969	1970	1969	1970										
											1,000 head									
Ohio .....	948	1,012	593	618	409	427	172	169	32	22										
Indiana .....	1,525	1,641	1,028	1,230	755	779	355	369	75	82										
Illinois .....	2,445	3,035	1,370	1,396	886	1,032	510	486	161	121										
Wisconsin ...	895	931	271	293	183	192	88	92	29	31										
Minnesota ...	1,535	1,685	674	717	359	437	230	187	72	94										
Iowa .....	6,307	7,003	2,844	2,907	1,731	1,718	1,113	1,189	371	396										
Missouri .....	1,724	2,117	772	835	611	623	359	366	126	130										
S. Dakota ...	1,090	1,281	361	455	180	165	108	83	63	83										
Nebraska .....	1,463	1,507	674	716	402	418	244	254	86	90										
Kansas .....	657	759	383	456	244	253	155	169	37	51										
Total 10 States .....	18,589	20,971	8,970	9,623	5,760	6,044	3,334	3,364	1,052	1,100										
Hawaii .....	24	22	14	15	9	8	1	1	---	---										

Hogs and Pigs: Number on farms, breeding, market, and total  
September 1, 1969 and 1970, selected States

State	Breeding			Market			Total		
	1969	1970		1969	1970		1969	1970	
		Number	As % of		Number	As % of		Number	As % of
	1,000 head	Percent	1,000 head	Percent	1,000 head	Percent	1,000 head	Percent	
Ohio .....	357	382	107	2,388	2,555	107	2,745	2,937	107
Indiana .....	639	672	105	3,928	4,306	110	4,567	4,978	109
Illinois ....	1,011	1,114	110	5,728	6,568	115	6,739	7,682	114
Wisconsin ..	314	332	106	1,586	1,682	106	1,900	2,014	106
Minnesota ..	523	575	110	3,211	3,682	115	3,734	4,257	114
Iowa .....	2,050	2,254	110	12,085	13,294	110	14,135	15,548	110
Missouri ....	586	703	120	3,660	4,392	120	4,246	5,095	120
South Dakota:	275	310	113	1,761	2,072	118	2,036	2,382	117
Nebraska ....	488	575	118	2,663	3,017	113	3,151	3,592	114
Kansas .....	250	291	116	1,415	1,790	127	1,665	2,081	125
Total 10 States ...	6,493	7,208	111	38,425	43,358	113	44,918	50,566	113
Hawaii .....	9	9	100	47	46	98	56	55	98

Market Hogs and Pigs: Number on farms, by weight groups,  
September 1, 1969 and 1970, selected States

State	Under 60 lbs.		60-119 lbs.		120-179 lbs.		180-219 lbs.		220 lbs. and over	
	1969	1970	1969	1970	1969	1970	1969	1970	1969	1970
	1,000 head									
Ohio .....	984	1,047	554	626	525	575	287	281	38	26
Indiana .....	1,650	1,722	903	1,077	805	904	491	517	79	86
Illinois ....	2,148	2,496	1,432	1,688	1,289	1,478	716	755	143	151
Wisconsin ..	714	757	373	404	293	319	174	168	32	34
Minnesota ..	1,300	1,473	777	920	626	722	450	497	58	70
Iowa .....	4,290	4,786	3,021	3,523	2,840	3,058	1,595	1,595	339	332
Missouri ....	1,449	1,818	977	1,142	736	856	410	475	88	101
South Dakota:	495	622	497	648	492	501	238	249	39	52
Nebraska ....	826	1,177	719	754	652	664	399	362	67	60
Kansas .....	495	662	347	430	311	376	220	268	42	54
Total 10 States ...	14,351	16,560	9,600	11,212	8,569	9,453	4,980	5,167	925	966
Hawaii .....	25	22	15	15	6	8	1	1	---	---

Farrowings: Number of sows, pigs per litter and pig crop,  
June-August 1968-70, selected States

State	Sows farrowing				Pigs per litter		Fig crop 1/		
	1968	1969	1970		1969	1970	1969	1970	
			Number	As % of 1969				Number	As % of 1969
	- 1,000 head -		Percent		Number		1,000 head		Percent
Ohio .....	142	139	150	108	7.50	7.70	1,042	1,155	111
Indiana .....	262	241	255	106	7.75	7.45	1,868	1,900	102
Illinois ...	425	374	441	118	7.10	7.00	2,655	3,087	116
Wisconsin ..	108	104	114	110	7.87	7.49	818	854	104
Minnesota ..	190	190	211	111	7.50	7.38	1,425	1,557	109
Iowa .....	718	625	700	112	7.20	7.05	4,500	4,935	110
Missouri ...	249	229	286	125	7.13	7.04	1,633	2,013	123
South Dakota:	68	61	79	130	7.50	7.14	458	564	123
Nebraska ...	134	122	194	159	7.50	6.90	915	1,339	146
Kansas .....	77	70	90	128	7.65	7.60	536	684	128
Total 10 States ...	2,373	2,155	2,520	117	7.35	7.18	15,850	18,088	114
Hawaii .....	3.0	2.8	2.6	93	6.80	7.10	19	18	95

1/ Number of pigs born June through August that were on hand September 1 or had been sold.

Farrowings: Number of sows, pigs per litter and pig crop,  
September-November 1968-70, selected States

State	Sows farrowing				Pigs per litter		Pig crop 2/	
	1968	1969	1970 1/		1969	1969	1969	1969
			Number	As % of 1969				
	- - 1,000 head - -		Percent		Number		1,000 head	
Ohio .....	125	125	135	108	7.40		925	
Indiana .....	188	184	197	107	7.59		1,397	
Illinois ...	382	355	401	113	7.10		2,520	
Wisconsin ..	111	107	119	111	7.76		830	
Minnesota ..	159	146	161	110	7.22		1,054	
Iowa .....	707	636	700	110	7.15		4,547	
Missouri ...	276	254	292	115	7.01		1,781	
South Dakota:	91	85	104	122	7.31		621	
Nebraska ...	185	166	208	125	7.40		1,228	
Kansas .....	95	91	109	120	7.70		701	
Total 10 States ...	2,319	2,149	2,426	113	7.26		15,604	
Hawaii .....	3.0	2.6	2.6	100	7.40		19	

1/ Intentions.

2/ The number of pigs born September through November that were on hand December 1 or had been sold.

Farrowings: Number of sows, pigs per litter and pig crop,  
December 1/ -February 1969-1971, selected States

State	Sows farrowing				Pigs per	Pig
	1969	1970	1971 2/		litter	crop 3/
			Number	As % of	1970	1970
	1,000 head		Percent		Number	1,000 head
Ohio .....	115	118	120	102	7.20	850
Indiana .....	210	220	220	100	7.34	1,615
Illinois .....	292	321	337	105	6.60	2,119
Wisconsin .....	74	75	73	97	7.64	573
Minnesota .....	141	147	154	105	7.50	1,102
Iowa .....	480	499	514	103	7.30	3,643
Missouri .....	196	206	227	110	6.98	1,438
South Dakota .....	67	70	73	104	7.42	519
Nebraska .....	131	149	177	119	7.68	1,144
Kansas .....	76	89	105	118	7.55	672
Total 10 States .....	1,782	1,894	2,000	106	7.22	13,675
Hawaii .....	2.7	2.6	2.6	100	7.31	19

1/ December preceding year.

2/ Intentions

3/ Number of pigs born December through February that were on hand March 1 or had been sold.

Hogs and Pigs: Number on farms, pig crop, inshipments, death loss and marketings  
June 1-September 1, 1969 and 1970, 10 States

Item	1969	1970	
		Number	As % of 1969
	1,000 head		Percent
Hogs and pigs on hand June 1 .....	44,649	48,979	110
Pig crop June-Aug. ....	15,850	18,088	114
Inshipments 1/ June-Aug. ....	285	330	116
Slaughter 2/ June-Aug. ....	14,826	15,666	106
Death loss June-Aug. ....	1,040	1,165	112
Hogs and pigs on hand Sept. 1 .....	44,918	50,566	113

1/ Includes only those shipped in from States outside the 10 States.

2/ Includes farm slaughter, and feeder pig outshipments to States other than the 10 States.

UNITED STATES DEPARTMENT OF AGRICULTURE  
STATISTICAL REPORTING SERVICE  
WASHINGTON, D. C. 20250

OFFICIAL BUSINESS

PENALTY FOR PRIVATE USE, \$300



POSTAGE & FEES PAID  
United States Department of Agriculture