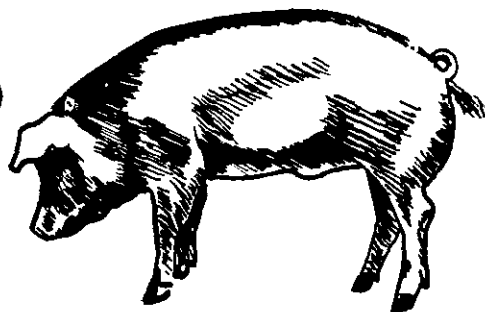


HOGS AND PIGS

DECEMBER 1970 (U. S. and 10 Corn Belt States)

In this issue:

- ★ December 1 Inventory
- ★ Sows Farrowing
- ★ Pig Crop



Release:
December 23, 1970
3:00 P.M. EST

Hogs and pigs on farms in the United States on December 1, 1970 are estimated at 67.5 million head -- 19 percent more than a year earlier, according to the Crop Reporting Board. Hogs and pigs kept for breeding are estimated at 9.4 million, an increase of 5 percent. Market hogs and pigs at 58.1 million, are up 22 percent.

The June-November 1970 pig crop is estimated at 49.7 million head, 18 percent above a year earlier. A total of 6.9 million sows farrowed in this period, 21 percent more than a year earlier.

The December 1969-May 1970 pig crop is estimated at 52.6 million head, up 12 percent from a year earlier. The total 1970 pig crop (December 1969-November 1970) is 102.3 million, 15 percent above a year earlier.

Hog producers intend to farrow 7.2 million sows from December 1970-May 1971, 1 percent more than a year earlier. If these intentions are realized and pigs per litter are average, allowing for trend, the pig crop for the period will be 53.1 million head, 1 percent more than a year earlier.

HOGS AND PIGS ON FARMS DECEMBER 1, 1970

The number of hogs and pigs on farms December 1 is estimated at 67,540,000 head -- up 19 percent from December 1, 1969. Breeding hogs totaled 9,418,000, an increase of 5 percent from 1969. The number of hogs and pigs for market totaled 58,122,000, up 22 percent from a year ago.

By weight groups, market hogs and pigs on hand December 1, 1970 and the percentage increases from a year earlier are: Less than 60 pounds, 21,603,000 head, 24 percent; 60-119 pounds, 15,681,000 head, 21 percent; 120-179 pounds, 11,449,000 head, 19 percent; 180-219 pounds, 6,973,000 head, 21 percent; and 220 pounds and heavier, 2,416,000 head, 29 percent.

UNITED STATES DEPARTMENT OF AGRICULTURE

STATISTICAL REPORTING SERVICE CROP REPORTING BOARD

MtAn 4 (12-70)

WASHINGTON, D.C. 20250

All regions were up in hog numbers. The South Central region had the largest increase, 26 percent. The South Atlantic and Western regions each showed 22 percent increases; the West North Central, 21 percent; East North Central, 14 percent; and the North Atlantic, 6 percent above a year earlier.

THE 10 CORN BELT STATES: December 1 hogs and pigs in the 10 Corn Belt States are estimated at 50,403,000 head, up 18 percent from a year earlier. These 10 States -- Ohio, Indiana, Illinois, Wisconsin, Minnesota, Iowa, Missouri, South Dakota, Nebraska and Kansas -- accounted for 75 percent of the total U. S. hog and pig inventory. The largest two States, Iowa and Illinois, which account for 24 and 11 percent of the U. S. total, were up 17 and 14 percent respectively from a year ago.

Market hogs and pigs in the 10 States totaled 43,566,000 head, up 21 percent from the 36,003,000 head on December 1, 1969. Breeding hogs total 6,837,000, an increase of 2 percent from a year earlier.

JUNE-NOVEMBER PIG CROP UP 18 PERCENT

The June-November 1970 pig crop totaled 49,768,000 head, an increase of 18 percent from a year earlier. The South Central region was up 22 percent; West North Central, 21 percent; Western, 18 percent; South Atlantic, 16 percent; East North Central, 15 percent and the North Atlantic, up slightly.

Sows farrowed during June-November 1970 totaled 6,905,000 head, up 21 percent from a year earlier.

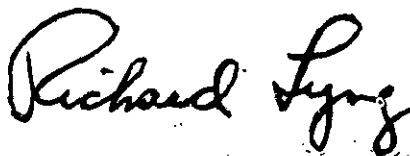
Average litter size during June-November 1970 was 7.21 pigs compared with 7.34 for this period a year ago.

THE JUNE-AUGUST 1970 PIG CROP IN THE 10 CORN BELT STATES totaled 18,334,000 head, an increase of 16 percent from a year earlier. Sows farrowed during the quarter totaled 2,554,000 head.

THE SEPTEMBER-NOVEMBER 1970 PIG CROP IN THE 10 CORN BELT STATES totaled 18,899,000 head, up 21 percent from a year earlier. Sows farrowed during this period totaled 2,645,000 head, an increase of 23 percent.

(Continued on page 20)

APPROVED:



ACTING SECRETARY OF AGRICULTURE

CROP REPORTING BOARD:

G. D. Simpson, Chairman,

M. L. Koehn, Secretary,

B. W. Kelly, E. B. Hannawald,
F. S. Barrett, R. P. Bellinghausen,
R. W. Britton, J. S. Buche,
D. J. Buckner, R. F. Carver,
M. R. Heiser, J. C. Ranek,
G. W. Suter, H. J. Tippet,
C. N. Ullom, F. A. Vogel,
W. H. Walther.

Hogs and Pigs: Number on farms, sows farrowing and pig crop,
United States, 1968-71

Item	1968	1969	1970	1971	1970 as percent of 1969	1971 as percent of 1970
	1,000 head				Percent	
<u>Number on farms-Dec. 1:</u>						
All hogs and pigs	60,632	56,655	67,540		119	
Kept for breeding	9,437	8,938	9,418		105	
Market	51,195	47,717	58,122		122	
<u>Market hogs and pigs</u>						
<u>by weight groups:</u>						
Under 60 pounds	18,419	17,486	21,603		124	
60-119 pounds	13,899	12,988	15,681		121	
120-179 pounds	10,527	9,609	11,449		119	
180-219 pounds	6,284	5,758	6,973		121	
220 pounds and over	2,066	1,876	2,416		129	
<u>Sows farrowing:</u>						
December 1/-February	2,557	2,570	2,750		107	
March-May	4,112	3,790	4,421		117	
December 1/-May	6,669	6,360	7,171	2/7,222	113	101
June-August	3,152	2,924	3,493		119	
September-November	2,977	2,803	3,412		122	
June-November	6,129	5,727	6,905		121	
<u>Pig crop:</u>						
December 1/-May	49,146	46,788	52,551	3/53,082	112	101
June-November	45,071	42,019	49,768		118	
Year	94,217	88,807	102,319		115	
<u>Pigs per litter:</u>		Number				
December 1/-May	7.37	7.36	7.33	3/7.35	100	100
June-November	7.35	7.34	7.21		98	

1/ December preceding year.

2/ Intentions.

3/ Average number of pigs per litter with allowance for trend used to compute indicated December-May pig crop.

Hogs and Pigs: Number on farms, sows farrowing and pig crop,
10 States, 1968-71

Item	1968	1969	1970	1971	1970 as percent of 1969	1971 as percent of 1970
	1,000 head			Percent		
<u>Number on Farms-</u>						
<u>December 1:</u>						
All hogs and pigs	46,760	42,719	50,403		118	
Kept for breeding	7,263	6,716	6,837		102	
Market	39,497	36,003	43,566		121	
<u>Market hogs and pigs</u>						
<u>by weight groups</u>						
Under 60 pounds	13,881	12,883	15,745		122	
60-119 pounds	10,793	9,883	11,809		119	
120-179 pounds	8,245	7,357	8,782		119	
180-219 pounds	5,072	4,572	5,566		122	
220 pounds and over	1,506	1,308	1,664		127	
<u>Sows farrowing</u>						
December 1/-February	1,789	1,782	1,894	2/2,000	106	106
March-May	3,346	3,035	3,530	2/3,304	116	94
June-August	2,373	2,148	2,554		119	
September-November	2,319	2,157	2,645		123	
<u>Pig crop</u>						
December 1/-February	13,024	12,882	13,675		106	
March-May	25,049	22,399	26,014		116	
June-August	17,546	15,797	18,334		116	
September-November	17,083	15,664	18,899		121	
<u>Pigs per litter</u>						
		Number				
December 1/-February	7.28	7.23	7.22		100	
March-May	7.49	7.38	7.37		100	
June-August	7.39	7.35	7.18		98	
September-November	7.37	7.26	7.15		98	

1/ December preceding year.

2/ Intentions.

Hogs and Pigs: On farm, pig crop, inshipments, death loss and marketings,
by quarters, Dec. 1, 1968-70, 10 States 1/

Item	1968	1969	
		Number	As % of 1968
		1,000 head	Percent
Hogs and Pigs on hand Dec. 1	46,760	42,719	91
	1969	1970	
		Number	As % of 1969
Pig crop Dec. 2/ - Feb.	12,882	13,675	106
Inshipments 3/ Dec. 2/ -Feb.	219	233	106
Slaughter 4/ Dec. 2/ - Feb.	18,364	15,419	84
Death loss Dec. 2/ - Feb.	1,136	1,030	91
Hogs and Pigs on hand Mar. 1	40,361	40,178	100
Pig crop Mar. - May	22,399	26,014	116
Inshipments 3/ Mar. - May	341	320	94
Slaughter 4/ Mar. - May	17,368	16,162	93
Death loss Mar. - May	1,227	1,220	99
Hogs and Pigs on hand June 1	44,506	49,130	110
Pig crop June-August	15,797	18,334	116
Inshipments 3/ June-August	281	332	118
Slaughter 4/ June-August	14,917	15,890	107
Death loss June-August	1,040	1,165	112
Hogs and Pigs on hand September 1	44,627	50,741	114
Pig crop September-November	15,664	18,899	121
Inshipments 3/ September-November	349	326	93
Slaughter 4/ September-November	17,011	18,528	109
Death loss September-November	910	1,035	114
Hogs and Pigs on hand December 1	42,719	50,403	118

1/ See page 14 for States included.

2/ December preceding year.

3/ Includes only those shipped in from States outside the 10 States.

4/ Includes farm slaughter, and feeder pig outshipments to States other than the 10 States.

Hogs and Pigs: Number on farms, breeding, market and total,
December 1, 1969 and 1970

State	Breeding			Market			Total		
	1970			1970			1970		
	1969	Number	As % of 1969	1969	Number	As % of 1969	1969	Number	As % of 1969
	1,000 head		Percent	1,000 head		Percent	1,000 head		Percent
Maine	2	2	100	9	8	89	11	10	91
N. H.	2	2	100	12	10	83	14	12	86
Vt.	1.0	1.0	100	5.7	5.0	88	6.7	6.0	90
Mass.	12	12	100	77	77	100	89	89	100
R. I.	1	1	100	9	9	100	10	10	100
Conn.	2	1.7	85	8	7.8	98	10	9.5	95
N. Y.	14	13	93	89	88	99	103	101	98
N. J.	13	13	100	108	108	100	121	121	100
Pa.	80	84	105	533	590	111	613	674	110
Ohio	358	369	103	2,199	2,469	112	2,557	2,838	111
Ind.	585	615	105	3,914	4,514	115	4,499	5,129	114
Ill.	983	1,023	104	5,568	6,445	116	6,551	7,468	114
Mich.	94	106	113	536	713	133	630	819	130
Wis.	294	299	102	1,386	1,633	118	1,680	1,932	115
Minn.	526	543	103	2,603	3,149	121	3,129	3,692	118
Iowa	2,302	2,203	96	11,648	14,119	121	13,950	16,322	117
Mo.	672	717	107	3,525	4,403	125	4,197	5,120	122
N. Dak.	60	68	113	255	357	140	315	425	135
S. Dak.	301	291	97	1,373	1,718	125	1,674	2,009	120
Nebr.	440	480	109	2,399	3,211	134	2,839	3,691	130
Kans.	255	297	116	1,388	1,905	137	1,643	2,202	134
Del.	6	7	117	34	39	115	40	46	115
Md.	29	34	117	163	187	115	192	221	115
Va.	87	106	122	532	711	134	619	817	132
W. Va.	10	11	110	61	65	107	71	76	107
N. C.	266	305	115	1,346	1,726	128	1,612	2,031	126
S. C.	76	92	121	400	541	135	476	633	133
Ga.	267	301	116	1,513	1,755	116	1,780	2,065	116
Fla.	63	67	106	268	307	115	331	374	113
Ky.	231	260	113	1,214	1,474	121	1,445	1,734	120
Tenn.	171	189	111	755	922	122	926	1,111	120
Ala.	142	159	112	807	951	118	949	1,110	117
Miss.	83	92	111	444	540	122	527	632	120
Ark.	55	74	135	233	318	136	288	392	136
La.	51	56	110	182	203	112	233	259	111
Okla.	64	76	119	311	430	138	375	506	135
Texas	163	227	139	796	1,192	150	959	1,419	148
Mont.	29	35	121	141	186	132	170	221	130
Idaho	17	21	124	101	150	149	118	171	145
Wyo.	5	6	120	24	32	133	29	38	130
Colo.	39	51	131	232	301	130	271	352	130
N. Mex.	9	10	111	39	50	128	48	60	125
Ariz.	9	12	133	52	67	129	61	79	130
Utah	8	9	113	48	50	104	56	59	105
Nev.	1.1	1.4	127	8.3	11.6	140	9.4	13.0	138
Wash.	11	15	136	76	81	107	87	96	110
Oreg.	17	17	100	101	105	104	118	122	103
Calif.	23	25	109	142	140	99	165	165	100
48 States	8,929	9,408	105	47,668	58,073	122	56,597	67,481	119
Alaska	.20	.40	200	.90	.70	78	1.10	1.10	100
Hawaii	9	10	111	48	48	100	57	58	102
U. S.	8,938	9,418	105	47,717	58,122	122	56,655	67,540	119

Market Hogs and Pigs: Number on farms by weight groups, December 1, 1969 and 1970

State	Under 60 lbs.		60-119 lbs.		120-179 lbs.		180-219 lbs.		220 lbs. and over	
	1969	1970	1969	1970	1969	1970	1969	1970	1969	1970
	1,000 head									
Maine	4	3	2	2	1	1	1	1	1	2
N. H.	4	4	3	2	2	1	2	2	1	1
Vt.	2.5	2.1	1.4	1.7	.7	.7	.7	.1	.4	.1
Mass.	26	29	22	20	15	14	9	9	5	5
R. I.	5	4.9	2	2.3	1	1.3	1	.4	.1	.1
Conn.	3	3.4	2	2.0	2	1.6	1	.5	.3	.3
N. Y.	32	29	25	23	15	19	13	11	4	6
N. J.	22	25	29	27	27	28	18	16	12	12
Pa.	182	201	144	177	101	106	69	65	37	41
Ohio	857	988	660	716	418	469	220	247	44	49
Ind.	1,252	1,445	1,155	1,354	920	993	509	609	78	113
Ill.	2,060	2,481	1,531	1,740	1,197	1,289	613	722	167	213
Mich.	177	232	150	189	128	164	70	111	11	17
Wis.	541	653	360	425	284	318	166	196	35	41
Minn.	872	1,055	778	929	534	630	336	409	83	126
Iowa	4,018	4,942	3,087	3,671	2,388	2,894	1,666	2,019	489	593
Mo.	1,304	1,651	969	1,189	705	881	388	484	159	198
N. Dak.	69	111	64	93	56	75	51	57	15	21
S. Dak.	493	618	330	430	234	301	220	266	96	103
Nebr.	959	1,138	624	803	420	674	288	385	108	161
Kans.	527	724	389	552	257	333	166	229	49	67
Del.	13	15	9	9	7	8	4	5	1	1
Md.	62	75	46	45	30	33	16	25	9	9
Va.	186	277	138	166	93	120	56	63	59	85
W. Va.	26	28	13	14	7	8	5	5	10	10
N. C.	538	718	357	452	242	285	121	145	88	126
S. C.	160	240	108	143	80	92	32	42	20	24
Ga.	635	754	439	491	303	334	106	123	30	53
Fla.	118	135	72	77	51	61	19	25	8	9
Ky.	509	590	297	383	231	295	134	147	43	59
Tenn.	338	399	156	202	124	148	67	87	70	86
Ala.	323	390	234	266	153	181	73	81	24	33
Miss.	182	232	102	130	85	92	53	59	22	27
Ark.	111	155	51	73	37	48	20	25	14	17
La.	81	91	47	56	31	32	13	15	10	9
Okla.	132	168	87	128	55	73	28	41	9	20
Texas	278	473	239	370	167	203	80	107	32	39
Mont.	52	67	36	48	30	41	18	23	5	7
Idaho	40	59	27	41	22	32	10	15	2	3
Wyo.	11	14	6	9	4	6	2	2	1	1
Colo.	91	121	53	75	49	57	30	36	9	12
N. Mex.	18	19	10	14	6	8	4	6	1	3
Ariz.	18	25	12	16	11	13	8	11	3	2
Utah	22	21	11	13	8	8	6	6	1	2
Nev.	3.3	4.5	2.1	2.8	1.6	2.4	1.0	1.4	.3	.5
Wash.	23	28	21	27	19	16	11	7	2	3
Oreg.	35	38	31	31	22	21	11	13	2	2
Calif.	49	52	40	36	26	30	21	18	6	4
48 States:	17,464	21,579	12,971	15,666	9,600	11,441	5,757	6,971	1,876	2,416
Alaska	.40	.28	.14	.24	.16	.14	.13	.02	.07	.02
Hawaii	21	24	17	15	9	8	1	1		
U. S.	17,486	21,603	12,988	15,681	9,609	11,449	5,758	6,973	1,876	2,416

Hogs and Pigs: Number on farms, breeding, market and total, June 1, 1969 and 1970

State	Breeding			Market			Total		
	1969	1970		1969	1970		1969	1970	
		Number	As % of 1969		Number	As % of 1969		Number	As % of 1969
	1,000 head	Percent	1,000 head	Percent	1,000 head	Percent			
Maine	2.0	1.7	85	6.6	5.8	88	8.6	7.5	87
N. H.	2	2	100	12	9	75	14	11	79
Vt.	.7	.7	100	4.4	4.0	91	5.1	4.7	92
Mass.	12	11	92	77	69	90	89	80	90
R. I.	1.3	1.0	77	8.6	6.7	78	9.9	7.7	78
Conn.	2	1.6	80	9	7.2	80	11	8.8	80
N. Y.	20	19	95	95	93	98	115	112	97
N. J.	12	13	108	121	115	95	133	128	96
Pa.	77	85	110	473	481	102	550	566	103
Ohio	395	428	108	2,154	2,248	104	2,549	2,676	105
Ind.	660	781	118	3,738	4,101	110	4,398	4,882	111
Ill.	1,023	1,156	113	5,372	6,070	113	6,395	7,226	113
Mich.	109	127	117	525	596	114	634	723	114
Wis.	322	338	105	1,466	1,539	105	1,788	1,877	105
Minn.	547	643	117	2,870	3,252	109	3,417	3,895	110
Iowa	2,199	2,517	114	12,366	13,213	107	14,565	15,730	108
Mo.	659	775	118	3,592	4,071	113	4,251	4,846	114
N. Dak.	53	65	123	328	369	112	381	434	114
S. Dak.	331	365	110	1,802	2,067	115	2,133	2,432	114
Nebr.	524	589	112	2,749	2,979	108	3,273	3,568	109
Kans.	261	310	119	1,476	1,688	114	1,737	1,998	115
Del.	7	9	129	30	37	123	37	46	124
Md.	29	33	114	139	133	96	168	166	99
Va.	95	110	116	501	540	108	596	650	109
W. Va.	12	13	108	65	61	94	77	74	96
N. C.	353	456	129	1,663	1,822	110	2,016	2,278	113
S. C.	86	118	137	433	474	109	519	592	114
Ga.	245	268	109	1,443	1,521	105	1,688	1,789	106
Fla.	63	70	111	285	281	99	348	351	101
Ky.	228	288	126	1,240	1,312	106	1,468	1,600	109
Tenn.	179	240	134	786	850	108	965	1,090	113
Ala.	158	190	120	836	864	103	994	1,054	106
Miss.	83	108	130	454	526	116	537	634	118
Ark.	52	65	125	206	234	114	258	299	116
La.	43	46	107	154	161	105	197	207	105
Okla.	60	79	132	278	316	114	338	395	117
Texas	133	197	148	752	900	120	885	1,097	124
Mont.	27	30	111	143	160	112	170	190	112
Idaho	18	18	100	95	104	109	113	122	108
Wyo.	5	7	140	23	27	117	28	34	121
Colo.	39	51	131	223	269	121	262	320	122
N. Mex.	10	11	110	46	48	104	56	59	105
Ariz.	9	10	111	51	58	114	60	68	113
Utah	10	11	110	41	41	100	51	52	102
Nev.	1.0	1.4	140	5.3	8.1	153	6.3	9.5	151
Wash.	14	15	107	76	77	101	90	92	102
Oreg.	17	19	112	99	105	106	116	124	107
Calif.	27	24	89	150	139	93	177	163	92
48 States	9,215	10,716	116	49,462	54,052	109	58,677	64,768	110
Alaska	.3	.3	100	1.0	.7	70	1.3	1.0	77
Hawaii	10	9	90	48	46	96	58	55	95
U. S.	9,225	10,725	116	49,511	54,099	109	58,736	64,824	110

Market Hogs and Pigs: Number on farms, by weight groups, June 1, 1969 and 1970

State	Under		60-119		120-179		180-219		220 lbs.	
	60 lbs.		lbs.		lbs.		lbs.		and over	
	1969	1970	1969	1970	1969	1970	1969	1970	1969	1970
	1,000 head									
Maine	2.7	1.7	1.4	1.5	1.3	.9	.9	1.4	.3	.3
N. H.	4	4	4	2	2	1	1	1	1	1
Vt.	2.0	2.0	.9	.9	.8	.6	.5	.3	.2	.2
Mass.	26	27	19	15	17	12	9	10	6	5
R. I.	3.6	2.1	2.7	1.7	1.1	1.6	.9	1.1	.3	.2
Conn.	4.0	3.4	2	1.9	2	1	1	.7		.2
N. Y.	39	37	22	27	17	16	13	8	4	5
N. J.	33	34	32	28	24	25	22	18	10	10
Pa.	204	204	118	125	90	82	47	53	14	17
Ohio	948	1,012	593	618	409	427	172	169	32	22
Ind.	1,525	1,641	1,028	1,230	755	779	355	369	75	82
Ill.	2,445	3,035	1,370	1,396	886	1,032	510	486	161	121
Mich.	273	304	129	137	68	77	47	66	8	12
Wis.	895	931	271	293	183	192	88	92	29	31
Minn.	1,535	1,756	674	748	359	455	230	195	72	98
Iowa	6,307	7,003	2,844	2,907	1,731	1,718	1,113	1,189	371	396
Mo.	1,724	2,117	772	835	611	623	359	366	126	130
N. Dak.	210	244	61	63	24	26	18	18	15	18
S. Dak.	1,090	1,281	361	455	180	165	108	83	63	83
Nebr.	1,402	1,505	646	715	385	417	234	253	82	89
Kans.	657	759	383	456	244	253	155	169	37	51
Del.	12	15	8	10	6	7	3	4	1	1
Md.	67	65	35	29	20	23	14	12	3	4
Va.	216	243	135	157	95	92	45	32	10	16
W. Va.	33	32	14	14	10	8	5	4	3	3
N. C.	739	855	466	483	289	302	126	137	43	45
S. C.	199	228	109	130	75	74	35	33	15	9
Ga.	678	722	404	426	260	266	79	84	22	23
Fla.	151	152	74	84	37	28	14	11	9	6
Ky.	608	734	285	289	198	171	112	92	37	26
Tenn.	362	450	196	213	141	119	71	51	16	17
Ala.	359	398	226	233	159	147	75	69	17	17
Miss.	204	237	122	131	82	95	32	47	14	16
Ark.	113	129	41	49	31	32	16	18	5	6
La.	83	81	43	45	14	21	6	8	8	6
Okla.	131	147	75	93	44	47	24	21	4	8
Texas	301	378	195	279	143	126	83	90	30	27
Mont.	72	80	33	38	18	22	13	13	7	7
Idaho	44	43	23	33	16	14	10	12	2	2
Wyo.	12	15	4	5	3	4	3	2	1	1
Colo.	97	123	57	62	42	48	21	23	6	13
N. Mex.	23	23	9	10	7	8	5	5	2	2
Ariz.	21	24	11	12	9	11	8	10	2	1
Utah	22	22	9	10	5	5	4	3	1	1
Nev.	2.7	3.9	1.4	2.1	.7	1.1	.4	.8	.1	.2
Wash.	28	27	21	18	17	17	7	12	3	3
Oreg.	36	39	26	28	21	24	13	12	3	2
Calif.	54	53	39	35	33	29	20	18	4	4
48 States:	23,997	27,222	11,995	12,974	7,766	8,045	4,329	4,373	1,375	1,438
Alaska	.59	.39	.21	.17	.15	.11	.04	.02	.01	.01
Hawaii	24	22	14	15	9	8	1	1		
U. S.	24,022	27,245	12,009	12,989	7,775	8,053	4,330	4,374	1,375	1,438

Farrowings: Number of sows, pigs per litter and pig crop, December 1/-May, 1968-71

State	Sows farrowing					Pigs per litter		Pig crop		
	1968	1969	1970	1971 2/		1969	1970	1968	1969	1970
				Number	As % of 1970					
	1,000 head			Percent		Number		1,000 head		
Maine	1.1	1.0	.9	.9	100	6.4	6.4	7.2	6.4	5.8
N. H.	1.2	1.2	1.0	.9	90	7.2	7.0	8.4	8.6	7.0
Vt.	.6	.5	.5	.5	100	7.8	7.2	4.5	3.9	3.6
Mass.	8.2	7.5	7.4	7.0	95	6.2	6.2	48	46	46
R. I.	.7	.9	.8	.8	100	6.3	6.3	4.4	5.7	5.0
Conn.	1.2	1.1	1.1	1.0	91	6.0	6.6	7.1	6.6	7.3
N. Y.	10.0	11.0	10.0	9.0	90	7.7	7.8	76	85	78
N. J.	8.3	8.4	8.1	8.1	100	6.0	5.7	52	50	46
Pa.	53.0	57.0	60	60	100	8.0	7.5	408	456	450
Ohio	261	255	265	262	99	7.47	7.48	1,924	1,904	1,982
Ind.	454	440	501	499	100	7.55	7.44	3,360	3,322	3,725
Ill.	815	734	847	826	98	6.92	6.85	5,817	5,080	5,801
Mich.	65	68	82	86	105	7.56	7.25	482	514	594
Wis.	229	224	240	244	102	7.57	7.57	1,776	1,696	1,817
Minn.	420	387	442	412	93	7.44	7.43	3,212	2,879	3,285
Iowa	1,635	1,508	1,681	1,586	94	7.36	7.34	12,166	11,094	12,331
Mo.	489	474	540	554	103	7.21	7.39	3,599	3,419	3,993
N. Dak.	45	41	47	52	110	7.50	7.50	344	308	352
S. Dak.	264	244	277	271	98	7.31	7.34	1,986	1,783	2,034
Nebr.	390	369	420	407	97	7.33	7.37	2,889	2,705	3,095
Kans.	178	182	211	243	115	7.69	7.71	1,344	1,399	1,626
Del.	3.4	3.5	4.2	4.7	112	7.3	7.2	24	26	30
Mi.	16	17	16	18	112	7.3	7.3	120	124	117
Va.	52	55	62	68	110	7.4	7.4	380	407	459
W. Va.	7.2	6.8	6.8	6.7	99	7.6	7.4	55	52	50
N. C.	212	225	277	310	112	7.8	7.6	1,590	1,755	2,105
S. C.	50	53	65	72	111	7.3	6.9	350	387	448
Ge.	181	188	199	209	105	7.3	7.3	1,285	1,372	1,453
Fla.	34	36	37	39	105	7.1	7.2	231	256	266
Ky.	167	167	179	188	105	7.5	7.3	1,219	1,252	1,307
Tenn.	135	116	135	140	104	7.6	7.4	945	882	999
Ala.	110	110	119	125	105	7.3	7.4	792	803	881
Miss.	58	58	72	74	103	6.9	6.9	365	400	487
Ark.	35	33	35	44	126	7.4	7.3	248	244	256
Ia.	24	21	22	23	105	6.8	7.1	156	143	156
Okla.	46	42	50	57	114	7.3	7.4	336	307	370
Texas	90	95	119	163	137	7.5	7.3	639	712	869
Mont.	18	18	21	24	114	7.4	7.6	140	133	160
Idaho	13	12	14	17	121	7.9	8.0	104	95	112
Wyo.	3.4	3.1	3.4	3.8	112	7.1	7.4	24	22	25
Colo.	27	28	33	42	127	7.8	7.8	194	218	257
N. Mex.	5.4	6.5	6.6	6.3	95	7.1	7.1	40	46	47
Ariz.	5.5	6.6	7.6	9.1	120	8.2	7.9	45	54	60
Utah	5.5	5.5	5.5	5.5	100	6.8	7.1	41	37	39
Nev.	1.2	.8	1.0	1.1	110	5.9	7.4	7.7	4.7	7.4
Wash.	8.0	8.5	8.0	10.0	125	8.2	8.0	66	70	64
Oreg.	11	10	11	11	100	8.2	8.3	94	82	91
Calif.	15	14	14	15	107	6.7	7.4	100	94	104
48 States:	6,663	6,354	7,166	7,216	101	7.36	7.33	49,105	46,749	52,513
Alaska	.13	.14	.12	.22	183	6.5	6.6	.78	.91	.79
Hawaii	6.0	5.4	5.2	5.5	105	7.04	7.12	40	38	37
U. S.	6,669	6,360	7,171	7,222	101	7.36	7.33	49,146	46,788	52,551

Farrowings: Number of sows, by quarters, December 1/-February and March-May
1969 and 1970

State	December - February			March - May		
	1969	1970	1970 as % of 1969	1969	1970	1970 as % of 1969
	1,000 head		Percent	1,000 head		Percent
Maine	.2	.2	100	.8	.7	88
N. H.	.2	.2	100	1.0	.8	80
Vt.	.1	.1	100	.4	.4	100
Mass.	2.1	1.8	86	5.4	5.6	104
R. I.	.3	.3	100	.6	.5	83
Conn.	.4	.4	100	.7	.7	100
N. Y.	5	4	80	6	6	100
N. J.	3.8	3.3	87	4.4	4.8	109
Pa.	27	30	111	30	30	100
Ohio	115	118	103	140	147	105
Ind.	210	220	105	230	281	122
Ill.	292	321	110	442	526	119
Mich.	31	37	119	37	45	122
Wis.	74	75	101	150	165	110
Minn.	141	147	104	246	295	120
Iowa	480	499	104	1,028	1,182	115
Mo.	196	206	105	278	334	120
N. Dak.	13	16	123	28	31	111
S. Dak.	67	70	104	177	207	117
Nebr.	131	149	114	238	271	114
Kans.	76	89	117	106	122	115
Del.	1.9	2.4	126	1.6	1.8	113
Md.	8	8	100	9	8	89
Va.	28	31	111	27	31	115
W. Va.	2.2	2.3	105	4.6	4.5	98
N. C.	122	141	116	103	136	132
S. C.	27	35	130	26	30	115
Ga.	103	100	97	85	99	116
Fla.	19	18	95	17	19	112
Ky.	92	81	88	75	98	131
Tenn.	58	69	119	58	66	114
Ala.	60	65	108	50	54	108
Miss.	31	37	119	27	35	130
Ark.	16	16	100	17	19	112
La.	12	13	108	9	9	100
Okla.	20	23	115	22	27	123
Texas	48	58	121	47	61	130
Mont.	8	10	125	10	11	110
Idaho	6	7	117	6	7	117
Wyo.	1.1	1.2	109	2	2.2	110
Colo.	13	15	115	15	18	120
N. Mex.	3.2	3.3	103	3.3	3.3	100
Ariz.	3.5	3.7	106	3.1	3.9	126
Utah	2.4	2.5	104	3.1	3.0	97
Nev.	.3	.5	167	.5	.5	100
Wash.	4.3	4.0	93	4.2	4.0	95
Oreg.	5	6	120	5	5	100
Calif.	7	7	100	7	7	100
48 States	2,567	2,747	107	3,787	4,419	117
Alaska	.05	.05	100	.09	.07	77
Hawaii	2.7	2.6	96	2.7	2.6	96
U. S.	2,570	2,750	107	3,790	4,421	117

1/ December preceding year.

Farrowings: Number of sows, pigs per litter and pig crop, June-November 1968-70

State	Sows farrowing				Pigs per litter		Pig crop			
	1968	1969	1970		1969	1970	1968	1969	1970	
			Number	As % of 1969					Number	As % of 1969
	1,000 head		Percent		Number		1,000 head		Percent	
Maine	1.1	1.1	1.0	91	7.5	7.2	8.8	8.2	7.2	88
N. H.	1.5	1.7	1.5	88	5.4	6.0	10	9.2	9.0	98
Vt.	.8	.9	.8	89	7.5	6.8	6.0	6.8	5.4	79
Mass.	8.5	8.0	8.4	105	6.9	6.4	54	55	54	98
R. I.	.8	.9	.9	100	7.2	5.2	4.4	6.5	4.7	72
Conn.	1.0	.9	.9	100	6.5	6.0	6.4	5.8	5.4	93
N. Y.	10	9.5	9.0	95	7.7	8.0	75	73	72	99
N. J.	7.2	6.7	7.1	106	5.7	5.4	45	38	38	100
Pa.	50	53	56	106	7.7	7.7	375	408	431	106
Ohio	267	264	297	113	7.45	7.56	1,994	1,967	2,244	114
Ind.	450	425	480	113	7.68	7.41	3,314	3,265	3,556	109
Ill.	807	729	878	120	7.10	6.92	5,767	5,175	6,080	117
Mich.	70	70	90	128	7.40	7.20	518	518	648	125
Wis.	219	211	250	118	7.81	7.49	1,699	1,648	1,873	114
Minn.	349	326	386	118	7.37	7.30	2,597	2,404	2,817	117
Iowa	1,425	1,261	1,495	119	7.17	7.05	10,552	9,047	10,540	117
Mo.	525	483	604	125	7.07	7.10	3,805	3,414	4,290	126
N. Dak.	26	25	35	140	7.40	7.40	195	185	259	140
S. Dak.	159	146	186	127	7.39	7.21	1,185	1,079	1,341	124
Nebr.	319	296	410	139	7.44	7.01	2,399	2,203	2,873	130
Kans.	172	164	213	130	7.68	7.60	1,317	1,259	1,619	129
Del.	4.7	5.2	6.0	115	7.5	7.0	33	39	42	108
Mi.	20	20	23	115	6.7	7.0	146	134	161	120
Va.	57	55	70	127	7.7	7.2	428	424	504	119
W. Va.	7.7	7.3	7.8	107	7.9	7.6	59	58	59	102
N. C.	151	157	188	120	7.5	7.4	1,132	1,178	1,391	118
S. C.	45	45	60	133	7.1	7.2	320	320	432	135
Ga.	161	171	188	110	7.3	7.2	1,159	1,248	1,354	108
Fla.	36	35	39	111	6.6	6.9	248	231	269	116
Ky.	152	149	177	119	7.7	7.5	1,110	1,147	1,328	116
Tenn.	124	114	135	118	7.7	7.5	893	878	1,013	115
Ala.	102	98	112	114	7.3	7.5	734	715	840	117
Miss.	52	53	64	120	7.1	7.0	364	376	448	119
Ark.	45	43	54	125	7.5	7.3	315	322	394	122
La.	19	20	21	105	7.0	7.0	122	140	147	105
Okla.	47	43	55	128	7.3	7.3	338	314	402	128
Texas	114	106	149	141	7.4	7.5	809	784	1,118	143
Mont.	18	17	22	129	7.8	7.3	142	133	161	121
Idaho	12	12	14	117	8.2	8.3	95	98	116	118
Wyo.	2.6	2.9	3.8	131	6.9	7.4	20	20	28	140
Colo.	29	32	40	125	7.5	7.5	212	240	300	125
N. Mex.	5.6	6.1	6.1	100	7.4	6.7	42	45	41	91
Ariz.	6.6	6.6	8.5	129	7.8	7.8	50	51	66	129
Utah	6.5	6.0	6.0	100	7.9	7.2	49	47	43	91
Nev.	1.1	.9	1.1	122	7.5	6.8	8.2	6.8	7.5	110
Wash.	7.4	8.0	10	125	7.0	7.5	62	56	75	134
Oreg.	12	12	13	108	8.3	8.0	102	100	104	104
Calif.	16	14	16	115	7.2	7.4	109	101	118	117
48 States:	6,123	5,721	6,899	121	7.34	7.21	45,028	41,980	49,728	118
Alaska	.15	.14	.13	93	5.8	6.9	.92	.81	.90	111
Hawaii	6.0	5.4	5.5	102	7.04	7.09	42	38	39	103
U. S.	6,129	5,727	6,905	121	7.34	7.21	45,071	42,019	49,768	118

Farrowings: Number of sows, by quarters, June-August and September-November
1969 and 1970

State	June-August			September-November		
	1969	1970	1970 as % of 1969	1969	1970	1970 as % of 1969
	1,000 head	1,000 head	Percent	1,000 head	1,000 head	Percent
Maine	.8	.7	88	.3	.3	100
N. H.	1.2	.9	75	.5	.6	120
Vt.	.6	.4	67	.3	.4	133
Mass.	4.8	4.9	102	3.2	3.5	109
R. I.	.6	.6	100	.3	.3	100
Conn.	.4	.4	100	.5	.5	100
N. Y.	5	4.9	98	4.5	4.1	91
N. J.	3.6	3.6	100	3.1	3.5	113
Pa.	28	29	104	25	27	108
Ohio	139	153	110	125	144	115
Ind.	241	265	110	184	215	117
Ill.	374	441	118	355	437	123
Mich.	42	59	140	28	31	111
Wis.	104	116	112	107	134	125
Minn.	180	211	117	146	175	120
Iowa	625	719	115	636	776	122
Mo.	229	286	125	254	318	125
N. Dak.	17	23	135	8	12	150
S. Dak.	61	79	130	85	107	126
Nebr.	122	194	159	174	216	124
Kans.	73	90	123	91	123	135
Del.	3.6	3.7	103	1.6	2.3	144
Md.	13	16	123	7	7	100
Va.	30	38	127	25	32	128
W. Va.	3.5	4.0	114	3.8	3.8	100
N. C.	86	102	119	71	86	121
S. C.	26	32	123	19	28	147
Ga.	92	100	109	79	88	111
Fla.	19	22	116	16	17	106
Ky.	77	97	126	72	80	111
Tenn.	63	80	127	51	55	108
Ala.	53	63	119	45	49	109
Miss.	30	33	110	23	31	135
Ark.	22	26	118	21	28	133
La.	11	11	100	.9	10	111
Okla.	22	30	136	21	25	119
Texas	57	76	133	49	73	149
Mont.	10	13	130	7	9	129
Idaho	6	7	117	6	7	117
Wyo.	1.6	2.2	138	1.3	1.6	123
Colo.	16	21	131	16	19	119
N. Mex.	3.2	3.5	109	2.9	2.6	90
Ariz.	3.5	5.1	146	3.1	3.4	110
Utah	2.9	2.8	97	3.1	3.2	103
Nev.	.5	.6	120	.4	.5	125
Wash.	3.6	5	139	4.4	5	114
Oreg.	7	7	100	5	6	120
Calif.	7	8	114	7	8	114
48 States	2,921	3,490	119	2,800	3,409	122
Alaska	.100	.085	85	.040	.045	112
Hawaii	2.8	2.6	93	2.6	2.9	112
U. S.	2,924	3,493	119	2,803	3,412	122

Hogs and Pigs: Number on farms, breeding, market and total,
March 1, 1969 and 1970, selected States

State	Breeding			Market			Total		
	1970		1969	1970		1969	1970		1969
	Number	As % of 1969		Number	As % of 1969		Number	As % of 1969	
	1,000 head	Percent	1,000 head	Percent	1,000 head	Percent			
Ohio	362	378	104	2,052	2,060	100	2,414	2,438	101
Indiana	675	682	101	3,543	3,578	101	4,218	4,260	101
Illinois	1,081	1,134	105	5,095	5,166	101	6,176	6,300	102
Wisconsin	314	305	97	1,115	1,081	97	1,429	1,386	97
Minnesota	526	559	106	2,317	2,369	102	2,843	2,928	103
Iowa	2,463	2,389	97	10,498	10,183	97	12,961	12,572	97
Missouri	738	768	104	3,363	3,169	94	4,101	3,937	96
S. Dakota	326	351	108	1,304	1,246	96	1,630	1,597	98
Nebraska	511	572	112	2,410	2,437	101	2,921	3,009	103
Kansas	250	289	116	1,418	1,462	103	1,668	1,751	105
Total 10 States	7,246	7,427	102	33,115	32,751	99	40,361	40,178	100
Hawaii	10	10	100	51	46	90	61	56	92

Market Hogs and Pigs: Number on farms, by weight groups,
March 1, 1969 and 1970, selected States

State	Under 60 lbs.		60-119 lbs.		120-179 lbs.		180-219 lbs.		220 lbs. and over	
	1969	1970	1969	1970	1969	1970	1969	1970	1969	1970
	1,000 head									
Ohio	759	762	482	486	503	505	267	268	41	39
Indiana	1,453	1,431	779	751	772	823	461	501	78	72
Illinois	1,794	1,937	1,146	1,137	1,299	1,266	713	671	143	155
Wisconsin	463	470	226	216	247	232	156	141	23	22
Minnesota	927	971	440	474	510	498	371	355	69	71
Iowa	3,643	3,717	2,131	2,138	2,782	2,546	1,575	1,477	367	305
Missouri	1,312	1,252	790	760	757	697	370	349	134	111
S. Dakota	456	480	287	243	346	299	169	174	46	50
Nebraska	856	999	542	573	603	524	337	280	72	61
Kansas	567	599	312	322	284	292	213	205	42	44
Total 10 States	12,230	12,618	7,135	7,100	8,103	7,682	4,632	4,421	1,015	930
Hawaii	23	24	17	14	10	7	1	1		

Hogs and Pigs: Number on farms, breeding, market, and total,
June 1, 1969 and 1970, selected States

State	Breeding			Market			Total		
	1970			1970			1970		
	1969	Number	As % of	1969	Number	As % of	1969	Number	As % of
		1969			1969			1969	
	1,000 head	Percent		1,000 head	Percent		1,000 head	Percent	
Ohio	395	428	108	2,154	2,248	104	2,549	2,676	105
Indiana	660	781	118	3,738	4,101	110	4,398	4,882	111
Illinois	1,023	1,156	113	5,372	6,070	113	6,395	7,226	113
Wisconsin	322	338	105	1,466	1,539	105	1,788	1,877	105
Minnesota	547	643	118	2,870	3,252	113	3,417	3,895	114
Iowa	2,199	2,517	114	12,366	13,213	107	14,565	15,730	108
Missouri	659	775	118	3,592	4,071	113	4,251	4,846	114
S. Dakota	331	365	110	1,802	2,067	115	2,133	2,432	114
Nebraska	524	589	112	2,749	2,979	108	3,273	3,568	109
Kansas	261	310	119	1,476	1,688	114	1,737	1,998	115
Total 10 States	6,921	7,902	114	37,585	41,228	110	44,506	49,130	110
Hawaii	10	9	90	48	46	96	58	55	95

Market Hogs and Pigs: Number on farms, by weight groups,
June 1, 1969 and 1970, selected States

State	Under 60 lbs.		60-119 lbs.		120-179 lbs.		180-219 lbs.		220 lbs. and over	
	1969	1970	1969	1970	1969	1970	1969	1970	1969	1970
	1,000 head									
Ohio	948	1,012	593	618	409	427	172	169	32	22
Indiana	1,525	1,641	1,028	1,230	755	779	355	369	75	82
Illinois	2,445	3,035	1,370	1,396	886	1,032	510	486	161	121
Wisconsin	895	931	271	293	183	192	88	92	29	31
Minnesota	1,535	1,756	674	748	359	455	230	195	72	98
Iowa	6,307	7,003	2,844	2,907	1,731	1,718	1,113	1,189	371	396
Missouri	1,724	2,117	772	835	611	623	359	366	126	130
S. Dakota	1,090	1,281	361	455	180	165	108	83	63	83
Nebraska	1,402	1,505	646	715	385	417	234	253	82	89
Kansas	657	759	383	456	244	253	155	169	37	51
Total 10 States	18,528	21,040	8,942	9,653	5,743	6,061	3,324	3,371	1,048	1,103
Hawaii	24	22	14	15	9	8	1	1		

Hogs and Pigs: Number on farms, breeding, market and total,
September 1, 1969 and 1970, selected States

State	Breeding			Market			Total		
	1969	1970		1969	1970		1969	1970	
		Number	As % of 1969		Number	As % of 1969		Number	As % of 1969
	1,000 head	Percent	1,000 head	Percent	1,000 head	Percent			
Ohio	357	382	107	2,388	2,555	107	2,745	2,937	107
Indiana	639	709	111	3,928	4,543	116	4,567	5,252	115
Illinois	1,011	1,114	110	5,728	6,568	115	6,739	7,682	114
Wisconsin	314	332	106	1,586	1,682	106	1,900	2,014	106
Minnesota	491	559	114	3,019	3,583	119	3,510	4,142	118
Iowa	2,050	2,254	110	12,085	13,294	110	14,135	15,548	110
Missouri	586	703	120	3,660	4,392	120	4,246	5,095	120
S. Dakota	275	310	113	1,761	2,072	118	2,036	2,382	117
Nebraska	478	541	113	2,606	3,067	118	3,084	3,608	117
Kansas	250	291	116	1,415	1,790	127	1,665	2,081	125
Total 10 States	6,451	7,195	112	38,176	43,546	114	44,627	50,741	114
Hawaii	9	9	100	47	46	98	56	55	98

Market Hogs and Pigs: Number on farms, by weight groups,
September 1, 1969 and 1970, selected States

State	Under 60 lbs.		60-119 lbs.		120-179 lbs.		180-219 lbs.		220 lbs. and over	
	1969	1970	1969	1970	1969	1970	1969	1970	1969	1970
Ohio	984	1,047	554	626	525	575	287	281	38	26
Indiana	1,650	1,817	903	1,136	805	954	491	545	79	91
Illinois	2,148	2,496	1,432	1,688	1,289	1,478	716	755	143	151
Wisconsin	714	757	373	404	293	319	174	168	32	34
Minnesota	1,223	1,469	730	860	589	702	423	484	54	68
Iowa	4,290	4,786	3,021	3,523	2,840	3,058	1,595	1,595	339	332
Missouri	1,449	1,818	977	1,142	736	856	410	475	88	101
S. Dakota	495	622	497	648	492	501	238	249	39	52
Nebraska	808	1,196	704	767	638	675	391	368	65	61
Kansas	495	662	347	430	311	376	220	268	42	54
Total 10 States	14,256	16,670	9,538	11,224	8,518	9,494	4,945	5,188	919	970
Hawaii	25	22	15	15	6	8	1	1		

Hogs and Pigs: Number on farms, breeding, market and total,
December 1, 1969 and 1970, selected States

State	Breeding			Market			Total		
	1970			1970			1970		
	1969	Number	As % of	1969	Number	As % of	1969	Number	As % of
	1,000 head	Percent	1,000 head	Percent	1,000 head	Percent	1,000 head	Percent	
Ohio	358	369	103	2,199	2,469	112	2,557	2,838	111
Indiana	585	615	105	3,914	4,514	115	4,499	5,129	114
Illinois	983	1,023	104	5,568	6,445	116	6,551	7,468	114
Wisconsin	294	299	102	1,386	1,633	118	1,680	1,932	115
Minnesota	526	543	103	2,603	3,149	121	3,129	3,692	118
Iowa	2,302	2,203	96	11,648	14,119	121	13,950	16,322	117
Missouri	872	717	107	3,525	4,403	125	4,197	5,120	122
S. Dakota	301	291	97	1,373	1,718	125	1,674	2,009	120
Nebraska	440	480	109	2,399	3,211	134	2,839	3,691	130
Kansas	255	297	116	1,388	1,905	137	1,643	2,202	134
Total 10 States	6,716	6,837	102	36,003	43,566	121	42,719	50,403	118
Hawaii	9	10	111	48	48	100	57	58	102

Market Hogs and Pigs: Number on farms, by weight groups,
December 1, 1969 and 1970, selected States

State	Under 60 lbs.		60-119 lbs.		120-179 lbs.		180-219 lbs.		220 lbs. and over	
	1969	1970	1969	1970	1969	1970	1969	1970	1969	1970
	1,000 head									
Ohio	857	988	660	716	418	469	220	247	44	49
Indiana	1,252	1,445	1,155	1,354	920	993	509	609	78	113
Illinois	2,060	2,481	1,531	1,740	1,197	1,289	613	722	167	213
Wisconsin	541	653	360	425	284	318	166	196	35	41
Minnesota	872	1,055	778	929	534	630	336	409	83	126
Iowa	4,018	4,942	3,087	3,671	2,388	2,894	1,666	2,019	489	593
Missouri	1,304	1,651	969	1,189	705	881	338	484	159	198
S. Dakota	493	618	330	430	234	301	220	266	96	103
Nebraska	959	1,188	624	803	420	674	288	385	108	161
Kansas	527	724	389	552	257	333	166	229	49	67
Total 10 States	12,833	15,745	9,883	11,809	7,357	8,782	4,572	5,566	1,308	1,664
Hawaii	21	24	17	15	9	8	1	1		

Farrowings: Number of sows, pigs per litter and pig crop,
December 1/ through February, 1968-71, selected States

State	Sows farrowing					Pigs per litter		Pig crop 3/		
	1968	1969	1970	1971 2/		1969	1970	1969	1970	
				Number	As % of 1970			Number	As % of 1969	
	1,000 head			Percent		Number		1,000 head		Percent
Ohio	115	115	118	118	100	7.30	7.20	840	850	101
Indiana	219	210	220	235	107	7.58	7.34	1,592	1,615	101
Illinois	307	292	321	337	105	6.80	6.60	1,986	2,119	107
Wisconsin	80	74	75	79	105	7.62	7.64	564	573	102
Minnesota	141	141	147	147	100	7.42	7.50	1,046	1,102	105
Iowa	480	480	499	499	100	7.05	7.30	3,384	3,643	108
Missouri	190	196	206	227	110	7.33	6.98	1,437	1,438	100
S. Dakota	58	67	70	70	100	7.33	7.42	491	519	106
Nebraska	125	131	149	177	119	7.30	7.68	956	1,144	120
Kansas	74	76	89	111	125	7.71	7.55	586	672	115
Total 10 States	1,789	1,782	1,894	2,000	106	7.23	7.22	12,882	13,675	106
Hawaii	3.0	2.7	2.6	2.8	108	6.89	7.31	19	19	100

1/ December preceding year. 2/ Intentions. 3/ Number of pigs born December through February that were still on hand March 1 or had been sold.

Farrowings: Number of sows, pigs per litter and pig crop,
March-May, 1968-71, selected States

State	Sows farrowing					Pigs per litter		Pig crop 2/		
	1968	1969	1970	1971 1/		1969	1970	1969	1970	
				Number	As % of 1970			Number	As % of 1969	
	1,000 head			Percent		Number		1,000 head		Percent
Ohio	146	140	147	144	98	7.60	7.70	1,064	1,132	106
Indiana	235	230	281	264	94	7.52	7.51	1,730	2,110	122
Illinois	508	442	526	489	93	7.00	7.00	3,094	3,682	119
Wisconsin	149	150	165	165	100	7.55	7.54	1,132	1,244	110
Minnesota	279	246	295	265	90	7.45	7.40	1,833	2,183	119
Iowa	1,155	1,028	1,182	1,087	92	7.50	7.35	7,710	8,688	113
Missouri	299	278	334	327	98	7.13	7.65	1,982	2,555	129
S. Dakota	206	177	207	201	97	7.30	7.32	1,292	1,515	117
Nebraska	265	238	271	230	85	7.35	7.20	1,749	1,951	112
Kansas	104	106	122	132	108	7.67	7.82	813	954	117
Total 10 States	3,346	3,035	3,530	3,304	94	7.38	7.37	22,399	26,014	116
Hawaii	3.0	2.7	2.6	2.7	104	7.04	7.10	19	18	95

1/ Intentions. 2/ Number of pigs born March through May that were still on hand June 1 or had been sold.

Farrowings: Number of sows, pigs per litter and pig crop,
June-August 1968-70, selected States

State	Sows farrowing				Pigs per litter		Pig crop 1/		
	1968	1969	1970		1969	1970	1969	1970	
			Number	As % of 1969				Number	As % of 1969
	1,000 head		Percent		Number		1,000 head		Percent
Ohio	142	139	153	110	7.50	7.70	1,042	1,178	113
Indiana	262	241	265	110	7.75	7.45	1,868	1,974	106
Illinois	425	374	441	118	7.10	7.00	2,655	3,087	116
Wisconsin	108	104	116	112	7.87	7.49	818	869	106
Minnesota	190	180	211	117	7.50	7.38	1,350	1,557	115
Iowa	718	625	719	115	7.20	7.05	4,500	5,069	113
Missouri	249	229	286	125	7.13	7.04	1,633	2,013	123
S. Dakota	68	61	79	130	7.50	7.14	458	564	123
Nebraska	134	122	194	159	7.50	6.90	915	1,339	146
Kansas	77	73	90	123	7.65	7.60	558	684	123
Total 10 States	2,373	2,148	2,554	119	7.35	7.18	15,797	18,334	116
Hawaii	3.0	2.8	2.6	93	6.80	7.10	19	18	95

1/ Number of pigs born June through August that were still on hand September 1 or had been sold.

Farrowings: Number of sows, pigs per litter and pig crop,
September-November, 1968-70, selected States

State	Sows farrowing				Pigs per litter		Pig crop 1/		
	1968	1969	1970		1969	1970	1969	1970	
			Number	As % of 1969				Number	As % of 1969
	1,000 head		Percent		Number		1,000 head		Percent
Ohio	125	125	144	115	7.40	7.40	925	1,066	115
Indiana	188	184	215	117	7.59	7.36	1,397	1,582	113
Illinois	382	355	437	123	7.10	6.85	2,520	2,993	119
Wisconsin	111	107	134	125	7.76	7.49	830	1,004	121
Minnesota	159	146	175	120	7.22	7.20	1,054	1,260	120
Iowa	707	636	776	122	7.15	7.05	4,547	5,471	120
Missouri	276	254	318	125	7.01	7.16	1,781	2,277	128
S. Dakota	91	85	107	126	7.31	7.26	621	777	125
Nebraska	185	174	216	124	7.40	7.10	1,288	1,534	119
Kansas	95	91	123	135	7.70	7.60	701	935	133
Total 10 States	2,319	2,157	2,645	123	7.26	7.15	15,664	18,899	121
Hawaii	3.0	2.6	2.9	112	7.40	7.10	19	21	111

1/ Number of pigs born September through November that are still on hand December 1, or had been sold.

UNITED STATES DEPARTMENT OF AGRICULTURE
STATISTICAL REPORTING SERVICE
WASHINGTON, D. C. 20250

OFFICIAL BUSINESS

PENALTY FOR PRIVATE USE, \$300



POSTAGE & FEES PAID
United States Department of Agriculture

(Continued from page 2)

DECEMBER-MAY INTENTIONS UP 1 PERCENT

Hog producers in the U. S. intend to have 7,222,000 sows farrow during December 1970-May 1971, an increase of 1 percent from a year earlier. Farrowings in the Western, South Central, and South Atlantic regions will be above a year ago, but other regions expect farrowings to be down.

If the farrowing intentions for December-May are realized and litter rates are average, allowing for trend, the pig crop will total 53,082,000, an increase of 1 percent from a year earlier.

Sows bred and intended to farrow in the 10 Corn Belt States during December 1970-February 1971 total 2,000,000, a 6 percent increase from a year earlier. Intentions are higher in 6 States while farrowings in 4 States are expected to be the same as a year ago.

Reported intentions are for 3,304,000 sows to farrow during the March-May 1971 quarter in the 10 States, down 6 percent from the previous year. All of the 10 States are below a year earlier except Wisconsin which is unchanged, and Kansas which plans to increase farrowings 8 percent.

Farrowings in these 10 States are expected to total 5,304,000 sows for the December 1970-May 1971 period, a decline of 2 percent from a year earlier.

CROP REPORTING BOARD