

---

---

# Hogs and Pigs



Crop  
Reporting  
Board

Statistical Reporting  
Service

United States  
Department of  
Agriculture

Washington, D.C. 20250

---

---

RELEASED: June 21, 1984  
3:00 P.M. ET

## In this Issue:

- \* Inventories
- \* Pig Crop
- \* Intentions
- \* December-February Pig Crop Revisions
- \* March 1 Inventory Revisions

INVENTORY DOWN 9 PERCENT: Inventory of all hogs and pigs in the U.S. on June 1, 1984, is estimated at 52.0 million head, according to the Crop Reporting Board. This is 9 percent below a year ago but about the same as 1982.

-- Breeding inventory, at 7.34 million head, was 9 percent less than a year ago and 1 percent below two years ago.

-- Market hog inventory, at 44.7 million head, was 9 percent below a year ago but about the same as two years ago.

Estimates for the 10 Quarterly States account for about 79 percent of the U.S. total inventory. These States, with 41.3 million head, were down 9 percent from last year but about the same as 1982.

PIG CROP: The December 1983-May 1984 U.S. pig crop was 41.5 million head, an 11 percent decrease from the corresponding period last year but 1 percent above two years ago.

Sows farrowing during this 6-month period, at 5.56 million, were 11 percent less than the comparable period last year. Pigs saved per litter was 7.46 compared with 7.52 last year and 7.34 two years ago.

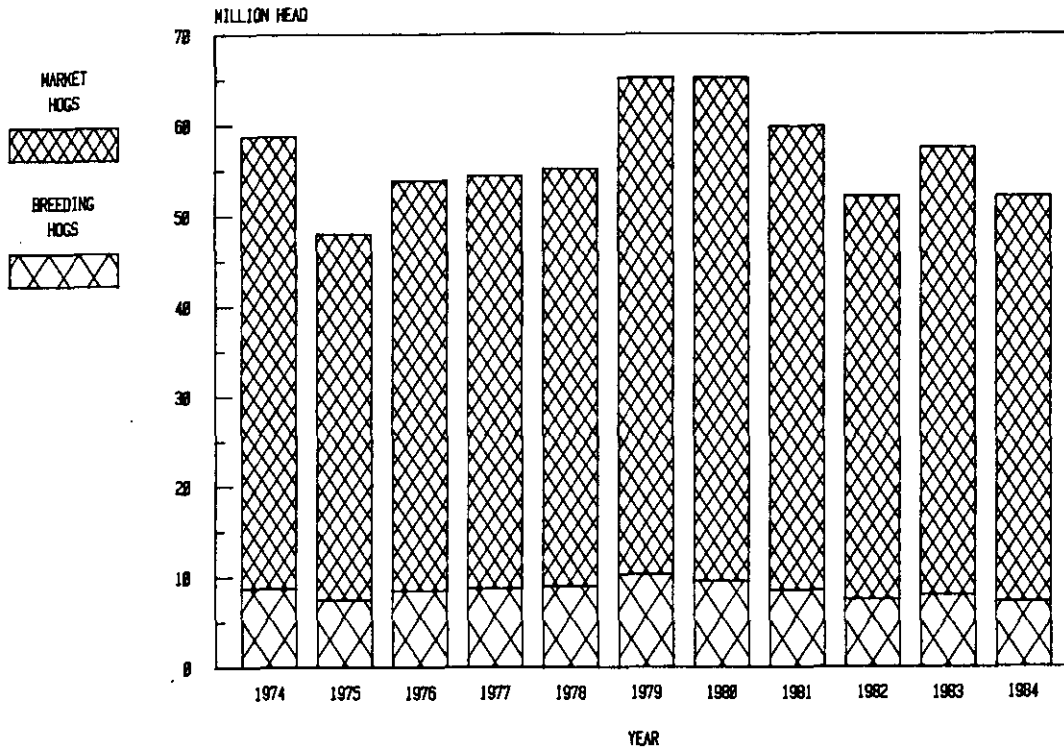
In the 10 Quarterly States, the December-May pig crop was 32.7 million head, 11 percent below last year. The December-February pig crop, at 14.0 million head, was down 10 percent and the March-May total of 18.7 million head was down 11 percent from the corresponding earlier period.

FARROWING INTENTIONS: U.S. producers intend to have 5.61 million sows farrow during the June-November period, a decrease of 9 percent from the same period in 1983 and 3 percent below 1982.

Intentions in the 10 Quarterly States for June-August are 2.21 million sows, down 8 percent from the same period in 1983. September-November quarter intended farrowings, at 2.20 million sows, are down 7 percent from the comparable quarter in 1983.

\*\*\*\*\*  
\* Requests for a subscription order form covering all available reports \*  
\* should be directed to Crop Reporting Board Publications, Room 5829 - \*  
\* South Building, USDA, Washington, D.C. 20250 (Phone (202) 447-4021). \*  
\*\*\*\*\*

## JUNE 1 HOGS AND PIGS INVENTORY UNITED STATES



**RELIABILITY AND ESTIMATING PROCEDURES:** Primary data used in setting these hog estimates were obtained from a sample of farmers across the U.S. using probability surveys. Information was collected by mail, telephone and personal interviews. Since all operations raising hogs were not included in the sample, survey estimates are subject to sampling variability. This variability, as measured by the relative standard error, is about two percent at the U.S. level for hog inventory. This means that chances are approximately 95 out of 100 that survey estimates will be within four percent of the complete coverage value if the same procedures were used to survey all producers. Survey estimates are also subject to non-sampling errors such as omissions, duplications, and mistakes in reporting, recording and processing the data. These errors cannot be measured directly, but they are minimized through rigid quality controls in the data collection process and a careful review of all reported data for consistency and reasonableness.

The sampling variability of survey estimates on intended farrowings is slightly larger than that for inventories. More important, actual farrowings may differ significantly from reported intentions due to unexpected economic and environmental conditions. For June-August intentions these differences have exceeded two percent in three of the last ten years. For September-November intentions as of June 1, these differences have exceeded six percent in four of the last ten years.

In setting the inventory estimates, the Crop Reporting Board constructed a U.S. balance sheet using estimates on births, deaths and check data on slaughter, imports and exports. This balance sheet provided an additional check on survey inventory estimates.

APPROVED:

*Richard E. Lyng*

ACTING SECRETARY OF AGRICULTURE

CROP REPORTING BOARD:

|                             |                |
|-----------------------------|----------------|
| R. R. Hancock, Chairperson, |                |
| G. L. Clampet, Secretary,   |                |
| R. D. Allen,                | R. L. Freie,   |
| J. L. Aschwege,             | R. W. Gann,    |
| C. A. Hudson,               | D. C. Ledbury, |
| R. B. Pense,                | S. D. Wiyatt.  |

HOGS AND PIGS: INVENTORY NUMBER, JUNE 1 AND DECEMBER 1, SOWS FARROWING AND PIG CROP, 1982-84, UNITED STATES

| ITEM                 | 1982      | 1983   | 1984     | 1984 AS % OF |      |
|----------------------|-----------|--------|----------|--------------|------|
|                      |           |        |          | 1982         | 1983 |
|                      | 1000 HEAD |        |          | PERCENT      |      |
| JUNE 1 INVENTORY     |           |        |          |              |      |
| ALL HOGS AND PIGS    | 52210     | 57450  | 52030    | 100          | 91   |
| KEPT FOR BREEDING    | 7419      | 8074   | 7335     | 99           | 91   |
| MARKET               | 44791     | 49376  | 44695    | 100          | 91   |
| MARKET HOGS AND PIGS |           |        |          |              |      |
| BY WEIGHT GROUPS:    |           |        |          |              |      |
| UNDER 60 POUNDS      | 19029     | 21855  | 18997    | 100          | 87   |
| 60-119 POUNDS        | 10999     | 11915  | 11224    | 102          | 94   |
| 120-179 POUNDS       | 8257      | 8764   | 7981     | 97           | 91   |
| 180 POUNDS AND OVER  | 6506      | 6842   | 6493     | 100          | 95   |
| DECEMBER 1 INVENTORY |           |        |          |              |      |
| ALL HOGS AND PIGS    | 53935     | 55819  |          |              |      |
| KEPT FOR BREEDING    | 7415      | 7352   |          |              |      |
| MARKET               | 46519     | 48467  |          |              |      |
| MARKET HOGS AND PIGS |           |        |          |              |      |
| BY WEIGHT GROUPS:    |           |        |          |              |      |
| UNDER 60 POUNDS      | 18628     | 18753  |          |              |      |
| 60-119 POUNDS        | 11808     | 12333  |          |              |      |
| 120-179 POUNDS       | 9282      | 9771   |          |              |      |
| 180 POUNDS AND OVER  | 6802      | 7610   |          |              |      |
| SOWS FARROWING:      |           |        |          |              |      |
| DECEMBER 1/-FEBRUARY | 2576      | 2742   | 2501     | 97           | 91   |
| MARCH-MAY            | 3016      | 3480   | 3062     | 102          | 88   |
| DECEMBER 1/-MAY      | 5592      | 6221   | 5563     | 99           | 89   |
| JUNE-AUGUST          | 2851      | 3149   |          |              |      |
| SEPTEMBER-NOVEMBER   | 2951      | 2992   |          |              |      |
| JUNE-NOVEMBER        | 5802      | 6140   | 2/ 5609  | 97           | 91   |
| PIG CROP:            |           |        |          |              |      |
| DECEMBER 1/-FEBRUARY | 18372     | 20365  | 18272    | 99           | 90   |
| MARCH-MAY            | 22655     | 26400  | 23206    | 102          | 88   |
| DECEMBER 1/-MAY      | 41027     | 46765  | 41478    | 101          | 89   |
| JUNE-AUGUST          | 21088     | 23178  |          |              |      |
| SEPTEMBER-NOVEMBER   | 21907     | 22301  |          |              |      |
| JUNE-NOVEMBER        | 42995     | 45479  | 3/ 41500 | 97           | 91   |
| YEAR                 | 84022     | 92244  | 3/ 82978 | 99           | 90   |
| PIGS PER LITTER:     |           | NUMBER |          |              |      |
| DECEMBER 1/-FEBRUARY | 7.13      | 7.43   | 7.31     | 103          | 98   |
| MARCH-MAY            | 7.51      | 7.59   | 7.58     | 101          | 100  |
| DECEMBER 1/-MAY      | 7.34      | 7.52   | 7.46     | 102          | 99   |
| JUNE-AUGUST          | 7.40      | 7.36   |          |              |      |
| SEPTEMBER-NOVEMBER   | 7.42      | 7.45   |          |              |      |
| JUNE-NOVEMBER        | 7.41      | 7.41   | 3/ 7.40  | 100          | 100  |

1/ DECEMBER PRECEDING YEAR.

2/ INTENTIONS.

3/ AVERAGE NUMBER OF PIGS PER LITTER WITH ALLOWANCE FOR TREND USED TO COMPUTE INDICATED JUNE-NOVEMBER PIG CROP.

HOGS AND PIGS: INVENTORY NUMBER, MARCH 1, JUNE 1, SEPTEMBER 1, DECEMBER 1,  
1982-84, 10 STATES 1/

| ITEM                  | 1982  | 1983      | 1984  | 1984 AS % OF |      |
|-----------------------|-------|-----------|-------|--------------|------|
|                       |       |           |       | 1982         | 1983 |
|                       |       | 1000 HEAD |       | PERCENT      |      |
| MARCH 1 INVENTORY     |       |           |       |              |      |
| ALL HOGS AND PIGS     | 40610 | 41840     | 39820 | 98           | 95   |
| KEPT FOR BREEDING     | 5578  | 5928      | 5392  | 97           | 91   |
| MARKET                | 35032 | 35912     | 34428 | 98           | 96   |
| MARKET HOGS AND PIGS  |       |           |       |              |      |
| BY WEIGHT GROUPS:     |       |           |       |              |      |
| UNDER 60 POUNDS       | 12755 | 13672     | 12320 | 97           | 90   |
| 60-119 POUNDS         | 8764  | 8979      | 8512  | 97           | 95   |
| 120-179 POUNDS        | 7815  | 7697      | 7739  | 99           | 101  |
| 180 POUNDS AND OVER   | 5698  | 5564      | 5857  | 103          | 105  |
| JUNE 1 INVENTORY      |       |           |       |              |      |
| ALL HOGS AND PIGS     | 41190 | 45250     | 41330 | 100          | 91   |
| KEPT FOR BREEDING     | 5689  | 6224      | 5735  | 101          | 92   |
| MARKET                | 35501 | 39026     | 35595 | 100          | 91   |
| MARKET HOGS AND PIGS  |       |           |       |              |      |
| BY WEIGHT GROUPS:     |       |           |       |              |      |
| UNDER 60 POUNDS       | 14941 | 17335     | 15197 | 102          | 88   |
| 60-119 POUNDS         | 8779  | 9415      | 9024  | 103          | 96   |
| 120-179 POUNDS        | 6575  | 6864      | 6231  | 95           | 91   |
| 180 POUNDS AND OVER   | 5206  | 5412      | 5143  | 99           | 95   |
| SEPTEMBER 1 INVENTORY |       |           |       |              |      |
| ALL HOGS AND PIGS     | 41670 | 45880     |       |              |      |
| KEPT FOR BREEDING     | 5553  | 5829      |       |              |      |
| MARKET                | 36117 | 40051     |       |              |      |
| MARKET HOGS AND PIGS  |       |           |       |              |      |
| BY WEIGHT GROUPS:     |       |           |       |              |      |
| UNDER 60 POUNDS       | 14562 | 15804     |       |              |      |
| 60-119 POUNDS         | 9000  | 10169     |       |              |      |
| 120-179 POUNDS        | 7277  | 8303      |       |              |      |
| 180 POUNDS AND OVER   | 5278  | 5775      |       |              |      |
| DECEMBER 1 INVENTORY  |       |           |       |              |      |
| ALL HOGS AND PIGS     | 42440 | 43430     |       |              |      |
| KEPT FOR BREEDING     | 5670  | 5605      |       |              |      |
| MARKET                | 36770 | 37825     |       |              |      |
| MARKET HOGS AND PIGS  |       |           |       |              |      |
| BY WEIGHT GROUPS:     |       |           |       |              |      |
| UNDER 60 POUNDS       | 14745 | 14556     |       |              |      |
| 60-119 POUNDS         | 9259  | 9649      |       |              |      |
| 120-179 POUNDS        | 7453  | 7723      |       |              |      |
| 180 POUNDS AND OVER   | 5313  | 5897      |       |              |      |

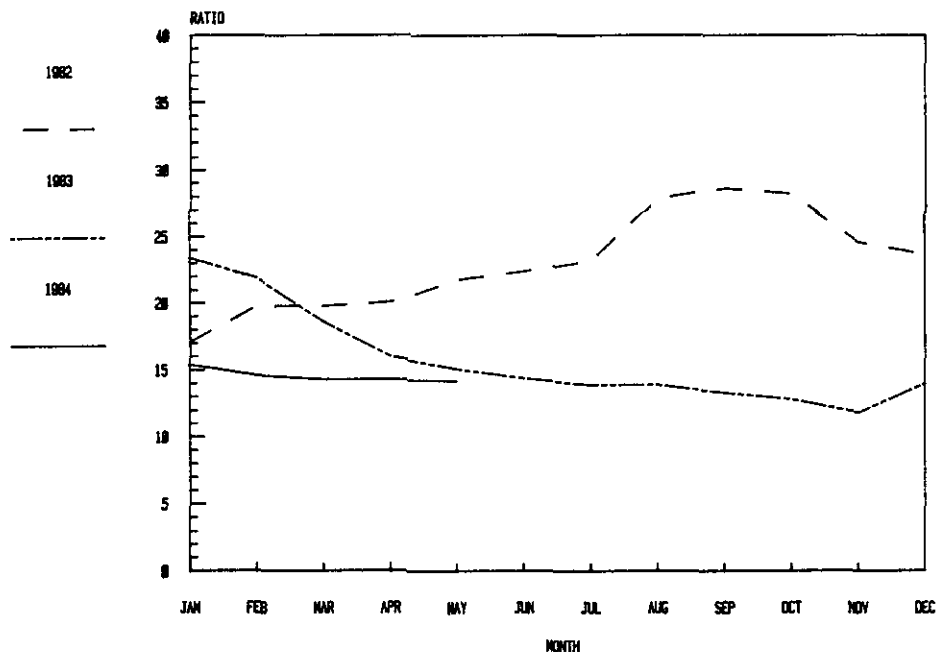
1/ GEORGIA, ILLINOIS, INDIANA, IOWA, KANSAS, MINNESOTA, MISSOURI NEBRASKA,  
NORTH CAROLINA, OHIO.

FARROWINGS: NUMBER OF SOWS, PIG CROP, AND PIGS PER LITTER,  
1982-84, 10 STATES 1/

| ITEM                 | 1982      | 1983  | 1984    | 1984 AS % OF |      |
|----------------------|-----------|-------|---------|--------------|------|
|                      |           |       |         | 1982         | 1983 |
|                      | 1000 HEAD |       | PERCENT |              |      |
| SOWS FARROWING:      |           |       |         |              |      |
| DECEMBER 2/-FEBRUARY | 1977      | 2090  | 1926    | 97           | 92   |
| MARCH-MAY            | 2391      | 2768  | 2462    | 103          | 89   |
| DECEMBER 2/-MAY      | 4368      | 4858  | 4388    | 100          | 90   |
| JUNE-AUGUST          | 2199      | 2400  | 3/ 2209 | 100          | 92   |
| SEPTEMBER-NOVEMBER   | 2363      | 2370  | 3/ 2200 | 93           | 93   |
| JUNE-NOVEMBER        | 4562      | 4770  | 3/ 4409 | 97           | 92   |
| PIG CROP:            |           |       |         |              |      |
| DECEMBER 2/-FEBRUARY | 14059     | 15543 | 13988   | 99           | 90   |
| MARCH-MAY            | 17943     | 21063 | 18677   | 104          | 89   |
| DECEMBER 2/-MAY      | 32002     | 36606 | 32665   | 102          | 89   |
| JUNE-AUGUST          | 16254     | 17675 |         |              |      |
| SEPTEMBER-NOVEMBER   | 17548     | 17611 |         |              |      |
| JUNE-NOVEMBER        | 33802     | 35286 |         |              |      |
| PIGS PER LITTER:     |           |       |         |              |      |
| DECEMBER 2/-FEBRUARY | 7.11      | 7.44  | 7.26    | 102          | 98   |
| MARCH-MAY            | 7.50      | 7.61  | 7.59    | 101          | 100  |
| DECEMBER 2/-MAY      | 7.33      | 7.54  | 7.44    | 102          | 99   |
| JUNE-AUGUST          | 7.39      | 7.36  |         |              |      |
| SEPTEMBER-NOVEMBER   | 7.43      | 7.43  |         |              |      |
| JUNE-NOVEMBER        | 7.41      | 7.40  |         |              |      |

- 1/ GEORGIA, ILLINOIS, INDIANA, IOWA, KANSAS, MINNESOTA, MISSOURI,  
NEBRASKA, NORTH CAROLINA, OHIO.  
2/ DECEMBER PRECEDING YEAR.  
3/ INTENTIONS.

HOG-CORN PRICE RATIO-UNITED STATES  
BU OF CORN=VALUE TO 100 LBS HOG LVWT



HOGS AND PIGS: INVENTORY NUMBERS, BREEDING, MARKET AND TOTAL,  
JUNE 1, 1983-84

| STATE    | BREEDING  |           |           | MARKET  |           |         | TOTAL     |           |         |
|----------|-----------|-----------|-----------|---------|-----------|---------|-----------|-----------|---------|
|          | 1984      |           |           | 1984    |           |         | 1984      |           |         |
|          | 1983      | :AS % OF: | 1983      | 1983    | :AS % OF: | 1983    | 1983      | :AS % OF: | 1983    |
|          | NUMBER:   | 1983      | NUMBER:   | 1983    | NUMBER:   | 1983    | NUMBER:   | 1983      | NUMBER: |
|          | 1000 HEAD | PERCENT   | 1000 HEAD | PERCENT | 1000 HEAD | PERCENT | 1000 HEAD | PERCENT   |         |
| GA       | 211       | 210       | 100       | 1189    | 1140      | 96      | 1400      | 1350      | 96      |
| ILL      | 810       | 800       | 99        | 5190    | 4900      | 94      | 6000      | 5700      | 95      |
| IND      | 620       | 590       | 95        | 3980    | 3710      | 93      | 4600      | 4300      | 93      |
| IOWA     | 2070      | 1880      | 91        | 13130   | 11920     | 91      | 15200     | 13800     | 91      |
| KANS     | 230       | 190       | 83        | 1470    | 1295      | 88      | 1700      | 1485      | 87      |
| MINN     | 598       | 570       | 95        | 3872    | 3300      | 85      | 4470      | 3870      | 87      |
| MO       | 575       | 520       | 90        | 3175    | 2880      | 91      | 3750      | 3400      | 91      |
| NEBR     | 535       | 450       | 84        | 3465    | 3050      | 88      | 4000      | 3500      | 88      |
| N C      | 305       | 285       | 93        | 1925    | 1840      | 96      | 2230      | 2125      | 95      |
| OHIO     | 270       | 240       | 89        | 1630    | 1560      | 96      | 1900      | 1800      | 95      |
| TOTAL    |           |           |           |         |           |         |           |           |         |
| 10 STS.  | 6224      | 5735      | 92        | 39026   | 35595     | 91      | 45250     | 41330     | 91      |
| OTHER 1/ | 1850      | 1600      | 86        | 10350   | 9100      | 88      | 12200     | 10700     | 88      |
| U.S.     | 8074      | 7335      | 91        | 49376   | 44695     | 91      | 57450     | 52030     | 91      |

1/ INDIVIDUAL STATE ESTIMATES NOT AVAILABLE FOR 40 STATES.

MARKET HOGS AND PIGS: INVENTORY NUMBER, BY WEIGHT GROUPS,  
JUNE 1, 1983-84

| STATE    | UNDER 60 LBS. |       | 60-119 LBS. |       | 120-179 LBS. |      | 180 LBS AND OVER |      |
|----------|---------------|-------|-------------|-------|--------------|------|------------------|------|
|          | 1983          | 1984  | 1983        | 1984  | 1983         | 1984 | 1983             | 1984 |
|          | 1000 HEAD     |       |             |       |              |      |                  |      |
| GA       | 530           | 502   | 324         | 308   | 224          | 216  | 111              | 114  |
| ILL      | 2257          | 2150  | 1225        | 1200  | 929          | 870  | 779              | 680  |
| IND      | 1568          | 1440  | 1075        | 1020  | 764          | 670  | 573              | 580  |
| IOWA     | 6053          | 4985  | 3072        | 3055  | 2219         | 2100 | 1786             | 1780 |
| KANS     | 654           | 565   | 382         | 341   | 240          | 210  | 194              | 179  |
| MINN     | 1607          | 1390  | 952         | 850   | 736          | 590  | 577              | 470  |
| MO       | 1581          | 1440  | 695         | 630   | 502          | 450  | 397              | 360  |
| NEBR     | 1540          | 1300  | 810         | 765   | 630          | 515  | 485              | 470  |
| N C      | 835           | 770   | 450         | 445   | 350          | 340  | 290              | 285  |
| OHIO     | 710           | 655   | 430         | 410   | 270          | 270  | 220              | 225  |
| TOTAL    |               |       |             |       |              |      |                  |      |
| 10 STS.  | 17335         | 15197 | 9415        | 9024  | 6864         | 6231 | 5412             | 5143 |
| OTHER 1/ | 4520          | 3800  | 2500        | 2200  | 1900         | 1750 | 1430             | 1350 |
| U.S.     | 21855         | 18997 | 11915       | 11224 | 8764         | 7981 | 6842             | 6493 |

1/ INDIVIDUAL STATE ESTIMATES NOT AVAILABLE FOR 40 STATES.

HOGS AND PIGS: INVENTORY NUMBERS, BREEDING, MARKET AND TOTAL,  
DECEMBER 1, 1982-83

| STATE    | BREEDING  |           |           | MARKET  |           |         | TOTAL   |           |     |
|----------|-----------|-----------|-----------|---------|-----------|---------|---------|-----------|-----|
|          | 1983      |           |           | 1983    |           |         | 1983    |           |     |
|          | 1982      | :AS % OF: |           | 1982    | :AS % OF: |         | 1982    | :AS % OF: |     |
|          | NUMBER:   | 1982:     |           | NUMBER: | 1982:     |         | NUMBER: | 1982:     |     |
|          | 1000 HEAD | PERCENT   | 1000 HEAD | PERCENT | 1000 HEAD | PERCENT |         |           |     |
| GA       | 217       | 186       | 86        | 1183    | 1124      | 95      | 1400    | 1310      | 94  |
| ILL      | 767       | 725       | 95        | 4833    | 4675      | 97      | 5600    | 5400      | 96  |
| IND      | 590       | 550       | 93        | 3810    | 3650      | 96      | 4400    | 4200      | 95  |
| IOWA     | 1786      | 1820      | 102       | 12614   | 12980     | 103     | 14400   | 14800     | 103 |
| KANS     | 195       | 194       | 99        | 1475    | 1406      | 95      | 1670    | 1600      | 96  |
| MINN     | 550       | 580       | 105       | 3350    | 3690      | 110     | 3900    | 4270      | 109 |
| MO       | 550       | 510       | 93        | 2950    | 3040      | 103     | 3500    | 3550      | 101 |
| NEBR     | 465       | 470       | 101       | 3135    | 3430      | 109     | 3600    | 3900      | 108 |
| N C      | 310       | 300       | 97        | 1840    | 2000      | 109     | 2150    | 2300      | 107 |
| OHIO     | 240       | 270       | 113       | 1580    | 1830      | 116     | 1820    | 2100      | 115 |
| TOTAL    |           |           |           |         |           |         |         |           |     |
| 10 STS.  | 5670      | 5605      | 99        | 36770   | 37825     | 103     | 42440   | 43430     | 102 |
| OTHER 1/ | 1745      | 1747      | 100       | 9749    | 10642     | 109     | 11495   | 12389     | 108 |
| U.S.     | 7415      | 7352      | 99        | 46519   | 48467     | 104     | 53935   | 55819     | 103 |

1/ INDIVIDUAL STATE ESTIMATES FOR 40 STATES PUBLISHED ONLY IN DECEMBER REPORT.

MARKET HOGS AND PIGS: INVENTORY NUMBER, BY WEIGHT GROUPS,  
DECEMBER 1, 1982-83

| STATE    | UNDER     |       | 60-119 |       | 120-179 |      | 180 LBS  |      |
|----------|-----------|-------|--------|-------|---------|------|----------|------|
|          | 60 LBS.   |       | LBS.   |       | LBS.    |      | AND OVER |      |
|          | 1982      | 1983  | 1982   | 1983  | 1982    | 1983 | 1982     | 1983 |
|          | 1000 HEAD |       |        |       |         |      |          |      |
| GA       | 509       | 472   | 349    | 292   | 213     | 231  | 112      | 129  |
| ILL      | 1837      | 1730  | 1155   | 1190  | 1049    | 960  | 792      | 795  |
| IND      | 1400      | 1300  | 1060   | 980   | 840     | 840  | 510      | 530  |
| IOWA     | 5008      | 4945  | 3179   | 3375  | 2573    | 2713 | 1854     | 1947 |
| KANS     | 575       | 549   | 354    | 357   | 295     | 274  | 251      | 226  |
| MINN     | 1374      | 1470  | 888    | 940   | 653     | 730  | 435      | 550  |
| MO       | 1330      | 1300  | 708    | 760   | 543     | 550  | 369      | 430  |
| NEBR     | 1317      | 1280  | 736    | 850   | 627     | 700  | 455      | 600  |
| N C      | 785       | 820   | 430    | 455   | 340     | 365  | 285      | 360  |
| OHIO     | 610       | 690   | 400    | 450   | 320     | 360  | 250      | 330  |
| TOTAL    |           |       |        |       |         |      |          |      |
| 10 STS.  | 14745     | 14556 | 9259   | 9649  | 7453    | 7723 | 5313     | 5897 |
| OTHER 1/ | 3883      | 4197  | 2549   | 2684  | 1829    | 2048 | 1489     | 1713 |
| U.S.     | 18628     | 18753 | 11808  | 12333 | 9282    | 9771 | 6802     | 7610 |

1/ INDIVIDUAL STATE ESTIMATES FOR 40 STATES PUBLISHED ONLY IN DECEMBER REPORT.

FARROWINGS: NUMBER OF SOWS, PIGS PER LITTER AND PIG CROP,  
DECEMBER 1/-MAY, 1983-84

| STATE    | SOWS FARROWING |        |         | PIGS PER LITTER |      | PIG CROP |        |         |
|----------|----------------|--------|---------|-----------------|------|----------|--------|---------|
|          | 1983           | 1984   |         | PER LITTER      |      | 1983     | 1984   |         |
|          |                | NUMBER | PERCENT | 1983            | 1984 |          | NUMBER | PERCENT |
| GA       | 149            | 143    | 96      | 7.06            | 7.10 | 1052     | 1016   | 97      |
| ILL      | 670            | 655    | 98      | 7.45            | 7.10 | 4991     | 4651   | 93      |
| IND      | 480            | 430    | 90      | 7.60            | 7.70 | 3648     | 3313   | 91      |
| IOWA     | 1585           | 1385   | 87      | 7.45            | 7.41 | 11811    | 10267  | 87      |
| KANS     | 191            | 163    | 85      | 7.48            | 7.23 | 1428     | 1179   | 83      |
| MINN     | 500            | 435    | 87      | 7.77            | 7.72 | 3886     | 3357   | 86      |
| MO       | 425            | 390    | 92      | 7.49            | 7.36 | 3183     | 2871   | 90      |
| NEBR     | 410            | 360    | 88      | 7.60            | 7.59 | 3116     | 2732   | 88      |
| N C      | 243            | 230    | 95      | 7.85            | 7.83 | 1907     | 1801   | 94      |
| OHIO     | 205            | 197    | 96      | 7.73            | 7.50 | 1584     | 1478   | 93      |
| TOTAL    |                |        |         |                 |      |          |        |         |
| 10 STS.  | 4858           | 4388   | 90      | 7.54            | 7.44 | 36606    | 32665  | 89      |
| OTHER 2/ | 1363           | 1175   | 86      | 7.45            | 7.50 | 10159    | 8813   | 87      |
| U.S.     | 6221           | 5563   | 89      | 7.52            | 7.46 | 46765    | 41478  | 89      |

1/ DECEMBER PRECEDING YEAR.

2/ INDIVIDUAL STATE ESTIMATES FOR 40 STATES PUBLISHED ONLY IN DECEMBER REPORT.

FARROWINGS: NUMBER OF SOWS, BY QUARTERS,  
DECEMBER 1/-FEBRUARY AND MARCH-MAY, 1983-84

| STATE    | DECEMBER-FEBRUARY |              |         | MARCH-MAY |              |         |
|----------|-------------------|--------------|---------|-----------|--------------|---------|
|          | 1983              | 1984 AS % OF |         | 1983      | 1984 AS % OF |         |
|          |                   | 1984         | 1983    |           | 1984         | 1983    |
|          |                   | 1000 HEAD    | PERCENT |           | 1000 HEAD    | PERCENT |
| GA       | 68                | 66           | 97      | 81        | 77           | 95      |
| ILL      | 270               | 255          | 94      | 400       | 400          | 100     |
| IND      | 240               | 210          | 88      | 240       | 220          | 92      |
| IOWA     | 625               | 575          | 92      | 960       | 810          | 84      |
| KANS     | 91                | 78           | 86      | 100       | 85           | 85      |
| MINN     | 225               | 200          | 89      | 275       | 235          | 85      |
| MO       | 180               | 165          | 92      | 245       | 225          | 92      |
| NEBR     | 175               | 170          | 97      | 235       | 190          | 81      |
| N C      | 118               | 110          | 93      | 125       | 120          | 96      |
| OHIO     | 98                | 97           | 99      | 107       | 100          | 93      |
| TOTAL    |                   |              |         |           |              |         |
| 10 STS.  | 2090              | 1926         | 92      | 2768      | 2462         | 89      |
| OTHER 2/ | 652               | 575          | 88      | 712       | 600          | 84      |
| U.S.     | 2742              | 2501         | 91      | 3480      | 3062         | 88      |

1/ DECEMBER PRECEDING YEAR.

2/ INDIVIDUAL STATE ESTIMATES FOR 40 STATES PUBLISHED ONLY IN DECEMBER REPORT.



FARROWINGS: NUMBER OF SOWS, PIGS PER LITTER AND PIG CROP,  
JUNE-NOVEMBER 1982-84

| STATE            | SOWS FARROWING |      |         | PIGS PER LITTER |      |      | PIG CROP  |         |           |                 |
|------------------|----------------|------|---------|-----------------|------|------|-----------|---------|-----------|-----------------|
|                  | 1982           | 1983 | 1984 1/ | AS % OF<br>1982 | 1982 | 1983 | 1982      | 1983    | 1983      |                 |
|                  |                |      | NUMBER  |                 |      |      |           |         | 1983      | AS % OF<br>1982 |
|                  |                |      |         |                 |      |      | 1000 HEAD | PERCENT | 1000 HEAD | PERCENT         |
| GA               | 149            | 142  | 142     | 100             | 7.10 | 7.15 | 1058      | 1015    | 96        |                 |
| ILL              | 660            | 650  | 630     | 97              | 7.18 | 7.15 | 4736      | 4645    | 98        |                 |
| IND              | 430            | 450  | 425     | 94              | 7.55 | 7.44 | 3247      | 3350    | 103       |                 |
| IOWA             | 1470           | 1560 | 1415    | 91              | 7.33 | 7.33 | 10771     | 11428   | 106       |                 |
| KANS             | 174            | 174  | 150     | 86              | 7.51 | 7.50 | 1306      | 1305    | 100       |                 |
| MINN             | 475            | 470  | 455     | 97              | 7.55 | 7.65 | 3588      | 3595    | 100       |                 |
| MO               | 410            | 455  | 405     | 89              | 7.35 | 7.28 | 3015      | 3312    | 110       |                 |
| NEBR             | 380            | 400  | 350     | 88              | 7.55 | 7.55 | 2870      | 3019    | 105       |                 |
| N C              | 222            | 240  | 235     | 98              | 7.70 | 7.75 | 1709      | 1860    | 109       |                 |
| OHIO             | 192            | 229  | 202     | 88              | 7.82 | 7.67 | 1502      | 1757    | 117       |                 |
| TOTAL<br>10 STS. | 4562           | 4770 | 4409    | 92              | 7.41 | 7.40 | 33802     | 35286   | 104       |                 |
| OTHER 2/         | 1240           | 1370 | 1200    | 88              | 7.41 | 7.44 | 9193      | 10193   | 111       |                 |
| U.S.             | 5802           | 6140 | 5609    | 91              | 7.41 | 7.41 | 42995     | 45479   | 106       |                 |

1/ INTENTIONS

2/ INDIVIDUAL STATE ESTIMATES FOR 40 STATES PUBLISHED ONLY IN DECEMBER REPORT.

FARROWINGS: NUMBER OF SOWS, BY QUARTERS,  
JUNE-AUGUST AND SEPTEMBER-NOVEMBER, 1982-83

| STATE            | JUNE-AUGUST |      |        | SEPTEMBER-NOVEMBER |      |      |           |                 |           |         |
|------------------|-------------|------|--------|--------------------|------|------|-----------|-----------------|-----------|---------|
|                  | 1982        | 1983 | 1983   | AS % OF<br>1982    | 1982 | 1983 | 1983      | AS % OF<br>1982 |           |         |
|                  |             |      | NUMBER |                    |      |      | NUMBER    |                 |           |         |
|                  |             |      |        |                    |      |      | 1000 HEAD | PERCENT         | 1000 HEAD | PERCENT |
| GA               | 77          | 72   | 72     | 94                 | 72   | 70   | 72        | 97              |           |         |
| ILL              | 330         | 340  | 340    | 103                | 330  | 310  | 310       | 94              |           |         |
| IND              | 220         | 255  | 255    | 116                | 210  | 195  | 195       | 93              |           |         |
| IOWA             | 680         | 760  | 760    | 112                | 790  | 800  | 800       | 101             |           |         |
| KANS             | 80          | 84   | 84     | 105                | 94   | 90   | 90        | 96              |           |         |
| MINN             | 250         | 230  | 230    | 92                 | 225  | 240  | 240       | 107             |           |         |
| MO               | 185         | 225  | 225    | 122                | 225  | 230  | 230       | 102             |           |         |
| NEBR             | 175         | 190  | 190    | 109                | 205  | 210  | 210       | 102             |           |         |
| N C              | 110         | 125  | 125    | 114                | 112  | 115  | 115       | 103             |           |         |
| OHIO             | 92          | 119  | 119    | 129                | 100  | 110  | 110       | 110             |           |         |
| TOTAL<br>10 STS. | 2199        | 2400 | 2400   | 109                | 2363 | 2370 | 2370      | 100             |           |         |
| OTHER 1/         | 652         | 749  | 749    | 115                | 588  | 622  | 622       | 106             |           |         |
| U.S.             | 2851        | 3149 | 3149   | 110                | 2951 | 2992 | 2992      | 101             |           |         |

1/ INDIVIDUAL STATE ESTIMATES FOR 40 STATES PUBLISHED ONLY IN DECEMBER REPORT.

HOGS AND PIGS: INVENTORY NUMBERS, BREEDING, MARKET AND TOTAL,  
MARCH 1, 1983-84 , 10 STATES

| STATE   | BREEDING  |           |           | MARKET    |           |           | TOTAL     |           |      |
|---------|-----------|-----------|-----------|-----------|-----------|-----------|-----------|-----------|------|
|         | 1984      |           |           | 1984      |           |           | 1984      |           |      |
|         | 1983      | :AS % OF: | 1983      | :AS % OF: | 1983      | :AS % OF: | 1983      | :AS % OF: | 1983 |
|         | NUMBER:   | 1983      | NUMBER:   | 1983      | NUMBER:   | 1983      | NUMBER:   | 1983      |      |
|         | 1000 HEAD | PERCENT   | 1000 HEAD | PERCENT   | 1000 HEAD | PERCENT   | 1000 HEAD | PERCENT   |      |
| GA      | 184       | 170       | 92        | 1106      | 1040      | 94        | 1290      | 1210      | 94   |
| ILL     | 753       | 710       | 94        | 4547      | 4290      | 94        | 5300      | 5000      | 94   |
| IND     | 580       | 540       | 93        | 3820      | 3460      | 91        | 4400      | 4000      | 91   |
| IOWA    | 1975      | 1770      | 90        | 12125     | 11480     | 95        | 14100     | 13250     | 94   |
| KANS    | 234       | 182       | 78        | 1446      | 1248      | 86        | 1680      | 1430      | 85   |
| MINN    | 592       | 530       | 90        | 3578      | 3450      | 96        | 4170      | 3980      | 95   |
| MO      | 545       | 510       | 94        | 2755      | 2740      | 99        | 3300      | 3250      | 98   |
| NEBR    | 490       | 450       | 92        | 3010      | 3100      | 103       | 3500      | 3550      | 101  |
| N C     | 315       | 280       | 89        | 1935      | 1870      | 97        | 2250      | 2150      | 96   |
| OHIO    | 260       | 250       | 96        | 1590      | 1750      | 110       | 1850      | 2000      | 108  |
| TOTAL   |           |           |           |           |           |           |           |           |      |
| 10 STS. | 5928      | 5392      | 91        | 35912     | 34428     | 96        | 41840     | 39820     | 95   |

MARKET HOGS AND PIGS: INVENTORY NUMBER, BY WEIGHT GROUPS,  
MARCH 1, 1983-84 , 10 STATES

| STATE   | UNDER     |       | 60-119 |      | 120-179 |      | 180 LBS  |      |
|---------|-----------|-------|--------|------|---------|------|----------|------|
|         | 60 LBS.   |       | LBS.   |      | LBS.    |      | AND OVER |      |
|         | 1983      | 1984  | 1983   | 1984 | 1983    | 1984 | 1983     | 1984 |
|         | 1000 HEAD |       |        |      |         |      |          |      |
| GA      | 448       | 431   | 305    | 270  | 231     | 214  | 122      | 125  |
| ILL     | 1714      | 1590  | 1092   | 1010 | 1027    | 960  | 714      | 730  |
| IND     | 1490      | 1275  | 980    | 900  | 820     | 760  | 530      | 525  |
| IOWA    | 4292      | 3795  | 3019   | 2783 | 2753    | 2762 | 2061     | 2140 |
| KANS    | 575       | 489   | 362    | 295  | 304     | 266  | 205      | 198  |
| MINN    | 1395      | 1250  | 920    | 860  | 680     | 770  | 583      | 570  |
| MO      | 1130      | 1020  | 683    | 675  | 584     | 594  | 358      | 451  |
| NEBR    | 1174      | 1100  | 768    | 844  | 617     | 663  | 451      | 493  |
| N C     | 820       | 740   | 460    | 435  | 365     | 370  | 290      | 325  |
| OHIO    | 634       | 630   | 390    | 440  | 316     | 380  | 250      | 300  |
| TOTAL   |           |       |        |      |         |      |          |      |
| 10 STS. | 13672     | 12320 | 8979   | 8512 | 7697    | 7739 | 5564     | 5857 |

HOGS AND PIGS: INVENTORY NUMBERS, BREEDING, MARKET AND TOTAL,  
SEPTEMBER 1, 1982-83 , 10 STATES

| STATE   | BREEDING  |            |           | MARKET     |           |            | TOTAL     |            |         |
|---------|-----------|------------|-----------|------------|-----------|------------|-----------|------------|---------|
|         | 1983      |            |           | 1983       |           |            | 1983      |            |         |
|         | 1982      | : AS % OF: | 1982      | : AS % OF: | 1982      | : AS % OF: | 1982      | : AS % OF: | 1982    |
|         | NUMBER:   | 1982       | NUMBER:   | 1982       | NUMBER:   | 1982       | NUMBER:   | 1982       | NUMBER: |
|         | 1000 HEAD | PERCENT    | 1000 HEAD | PERCENT    | 1000 HEAD | PERCENT    | 1000 HEAD | PERCENT    |         |
| GA      | 210       | 190        | 90        | 1170       | 1110      | 95         | 1380      | 1300       | 94      |
| ILL     | 764       | 732        | 96        | 4936       | 5368      | 109        | 5700      | 6100       | 107     |
| IND     | 557       | 610        | 110       | 3693       | 4190      | 113        | 4250      | 4800       | 113     |
| IOWA    | 1825      | 1966       | 108       | 12775      | 13634     | 107        | 14600     | 15600      | 107     |
| KANS    | 214       | 218        | 102       | 1426       | 1482      | 104        | 1640      | 1700       | 104     |
| MINN    | 573       | 533        | 93        | 3377       | 3797      | 112        | 3950      | 4330       | 110     |
| MO      | 450       | 525        | 117       | 2550       | 3175      | 125        | 3000      | 3700       | 123     |
| NEBR    | 450       | 475        | 106       | 3000       | 3425      | 114        | 3450      | 3900       | 113     |
| N C     | 270       | 310        | 115       | 1730       | 1990      | 115        | 2000      | 2300       | 115     |
| OHIO    | 240       | 270        | 113       | 1460       | 1880      | 129        | 1700      | 2150       | 126     |
| TOTAL   |           |            |           |            |           |            |           |            |         |
| 10 STS. | 5553      | 5829       | 105       | 36117      | 40051     | 111        | 41670     | 45880      | 110     |

MARKET HOGS AND PIGS: INVENTORY NUMBER, BY WEIGHT GROUPS,  
SEPTEMBER 1, 1982-83 , 10 STATES

| STATE   | UNDER     |       | 60-119 |       | 120-179 |      | 180 LBS  |      |
|---------|-----------|-------|--------|-------|---------|------|----------|------|
|         | 60 LBS.   |       | LBS.   |       | LBS.    |      | AND OVER |      |
|         | 1982      | 1983  | 1982   | 1983  | 1982    | 1983 | 1982     | 1983 |
|         | 1000 HEAD |       |        |       |         |      |          |      |
| GA      | 538       | 494   | 289    | 294   | 205     | 200  | 138      | 122  |
| ILL     | 1900      | 2013  | 1185   | 1331  | 1037    | 1127 | 814      | 897  |
| IND     | 1460      | 1630  | 883    | 1065  | 830     | 910  | 520      | 585  |
| IOWA    | 4919      | 5338  | 3334   | 3633  | 2644    | 2863 | 1878     | 1800 |
| KANS    | 540       | 565   | 373    | 387   | 287     | 295  | 226      | 235  |
| MINN    | 1520      | 1458  | 888    | 923   | 550     | 801  | 419      | 615  |
| MO      | 1160      | 1381  | 573    | 756   | 459     | 587  | 358      | 451  |
| NEBR    | 1200      | 1320  | 705    | 855   | 630     | 750  | 465      | 500  |
| N C     | 725       | 835   | 420    | 475   | 345     | 400  | 240      | 280  |
| OHIO    | 600       | 770   | 350    | 450   | 290     | 370  | 220      | 290  |
| TOTAL   |           |       |        |       |         |      |          |      |
| 10 STS. | 14562     | 15804 | 9000   | 10169 | 7277    | 8303 | 5278     | 5775 |

FARROWINGS: NUMBER OF SOWS, PIGS PER LITTER AND PIG CROP,  
DECEMBER 1/-FEBRUARY 1983-84 , 10 STATES

| STATE   | SOWS FARROWING |           |         | PIGS PER LITTER |      | PIG CROP 2/ |          |      |
|---------|----------------|-----------|---------|-----------------|------|-------------|----------|------|
|         | 1984           |           |         | 1983            |      | 1984        |          |      |
|         | 1983           | :AS % OF: |         | 1983            | 1984 | 1983        | :AS % OF |      |
|         | NUMBER         | 1983      | 1983    | 1983            | 1984 | NUMBER      | 1983     | 1983 |
|         |                | 1000 HEAD | PERCENT | NUMBER          |      | 1000 HEAD   | PERCENT  |      |
| GA      | 68             | 66        | 97      | 6.90            | 7.00 | 469         | 462      | 99   |
| ILL     | 270            | 255       | 94      | 7.30            | 7.10 | 1971        | 1811     | 92   |
| IND     | 240            | 210       | 88      | 7.50            | 7.50 | 1800        | 1575     | 88   |
| IOWA    | 625            | 575       | 92      | 7.30            | 7.15 | 4563        | 4111     | 90   |
| KANS    | 91             | 78        | 86      | 7.40            | 7.00 | 673         | 546      | 81   |
| MINN    | 225            | 200       | 89      | 7.80            | 7.50 | 1755        | 1500     | 85   |
| MO      | 180            | 165       | 92      | 7.20            | 7.10 | 1296        | 1172     | 90   |
| NEBR    | 175            | 170       | 97      | 7.60            | 7.35 | 1330        | 1250     | 94   |
| N C     | 118            | 110       | 93      | 7.85            | 7.75 | 926         | 853      | 92   |
| OHIO    | 98             | 97        | 99      | 7.75            | 7.30 | 760         | 708      | 93   |
| TOTAL   |                |           |         |                 |      |             |          |      |
| 10 STS. | 2090           | 1926      | 92      | 7.44            | 7.26 | 15543       | 13988    | 90   |

1/ DECEMBER PRECEDING YEAR.

2/ NUMBER OF PIGS BORN DECEMBER THROUGH FEBRUARY, THAT WERE ON HAND MARCH 1, OR HAD BEEN SOLD.

FARROWINGS: NUMBER OF SOWS, PIGS PER LITTER AND PIG CROP,  
MARCH-MAY 1983-84 , 10 STATES

| STATE   | SOWS FARROWING |           |         | PIGS PER LITTER |      | PIG CROP 1/ |          |      |
|---------|----------------|-----------|---------|-----------------|------|-------------|----------|------|
|         | 1984           |           |         | 1983            |      | 1984        |          |      |
|         | 1983           | :AS % OF: |         | 1983            | 1984 | 1983        | :AS % OF |      |
|         | NUMBER         | 1983      | 1983    | 1983            | 1984 | NUMBER      | 1983     | 1983 |
|         |                | 1000 HEAD | PERCENT | NUMBER          |      | 1000 HEAD   | PERCENT  |      |
| GA      | 81             | 77        | 95      | 7.20            | 7.20 | 583         | 554      | 95   |
| ILL     | 400            | 400       | 100     | 7.55            | 7.10 | 3020        | 2840     | 94   |
| IND     | 240            | 220       | 92      | 7.70            | 7.90 | 1848        | 1738     | 94   |
| IOWA    | 960            | 810       | 84      | 7.55            | 7.60 | 7248        | 6156     | 85   |
| KANS    | 100            | 85        | 85      | 7.55            | 7.45 | 755         | 633      | 84   |
| MINN    | 275            | 235       | 85      | 7.75            | 7.90 | 2131        | 1857     | 87   |
| MO      | 245            | 225       | 92      | 7.70            | 7.55 | 1887        | 1699     | 90   |
| NEBR    | 235            | 190       | 81      | 7.60            | 7.80 | 1786        | 1482     | 83   |
| N C     | 125            | 120       | 96      | 7.85            | 7.90 | 981         | 948      | 97   |
| OHIO    | 107            | 100       | 93      | 7.70            | 7.70 | 824         | 770      | 93   |
| TOTAL   |                |           |         |                 |      |             |          |      |
| 10 STS. | 2768           | 2462      | 89      | 7.61            | 7.59 | 21063       | 18677    | 89   |

1/ NUMBER OF PIGS BORN MARCH THROUGH MAY, THAT WERE ON HAND JUNE 1, OR HAD BEEN SOLD.

FARROWINGS: NUMBER OF SOWS, PIGS PER LITTER AND PIG CROP,  
JUNE-AUGUST 1982-84 , 10 STATES

| STATE   | SOWS FARROWING |         |        |         | PIGS PER LITTER |         | PIG CROP 1/ |         |      |
|---------|----------------|---------|--------|---------|-----------------|---------|-------------|---------|------|
|         | 1982           |         | 1983   |         | 1983            |         | 1982        |         | 1983 |
|         | NUMBER         | AS % OF | NUMBER | AS % OF | NUMBER          | AS % OF | NUMBER      | AS % OF |      |
|         | 1000 HEAD      | PERCENT | NUMBER | PERCENT | NUMBER          | PERCENT | 1000 HEAD   | PERCENT |      |
| GA      | 77             | 72      | 72     | 100     | 7.10            | 7.10    | 547         | 511     | 93   |
| ILL     | 330            | 340     | 330    | 97      | 7.10            | 7.05    | 2343        | 2397    | 102  |
| IND     | 220            | 255     | 235    | 92      | 7.60            | 7.40    | 1672        | 1887    | 113  |
| IOWA    | 680            | 760     | 675    | 89      | 7.30            | 7.30    | 4964        | 5548    | 112  |
| KANS    | 80             | 84      | 75     | 89      | 7.40            | 7.50    | 592         | 630     | 106  |
| MINN    | 250            | 230     | 230    | 100     | 7.60            | 7.70    | 1900        | 1771    | 93   |
| MO      | 185            | 225     | 200    | 89      | 7.30            | 7.10    | 1350        | 1598    | 118  |
| NEBR    | 175            | 190     | 170    | 89      | 7.50            | 7.60    | 1312        | 1444    | 110  |
| N C     | 110            | 125     | 120    | 96      | 7.70            | 7.70    | 847         | 963     | 114  |
| OHIO    | 92             | 119     | 102    | 86      | 7.90            | 7.78    | 727         | 926     | 127  |
| TOTAL   |                |         |        |         |                 |         |             |         |      |
| 10 STS. | 2199           | 2400    | 2209   | 92      | 7.39            | 7.36    | 16254       | 17675   | 109  |

1/ NUMBER OF PIGS BORN JUNE THROUGH AUGUST, THAT WERE ON HAND SEPTEMBER 1, OR HAD BEEN SOLD.  
2/ INTENTIONS.

FARROWINGS: NUMBER OF SOWS, PIGS PER LITTER AND PIG CROP,  
SEPTEMBER-NOVEMBER 1982-84 , 10 STATES

| STATE   | SOWS FARROWING |         |        |         | PIGS PER LITTER |         | PIG CROP 1/ |         |      |
|---------|----------------|---------|--------|---------|-----------------|---------|-------------|---------|------|
|         | 1982           |         | 1983   |         | 1983            |         | 1982        |         | 1983 |
|         | NUMBER         | AS % OF | NUMBER | AS % OF | NUMBER          | AS % OF | NUMBER      | AS % OF |      |
|         | 1000 HEAD      | PERCENT | NUMBER | PERCENT | NUMBER          | PERCENT | 1000 HEAD   | PERCENT |      |
| GA      | 72             | 70      | 70     | 100     | 7.10            | 7.20    | 511         | 504     | 99   |
| ILL     | 330            | 310     | 300    | 97      | 7.25            | 7.25    | 2393        | 2248    | 94   |
| IND     | 210            | 195     | 190    | 97      | 7.50            | 7.50    | 1575        | 1463    | 93   |
| IOWA    | 790            | 800     | 740    | 93      | 7.35            | 7.35    | 5807        | 5880    | 101  |
| KANS    | 94             | 90      | 75     | 83      | 7.60            | 7.50    | 714         | 675     | 95   |
| MINN    | 225            | 240     | 225    | 94      | 7.50            | 7.60    | 1688        | 1824    | 108  |
| MO      | 225            | 230     | 205    | 89      | 7.40            | 7.45    | 1665        | 1714    | 103  |
| NEBR    | 205            | 210     | 180    | 86      | 7.60            | 7.50    | 1558        | 1575    | 101  |
| N C     | 112            | 115     | 115    | 100     | 7.70            | 7.80    | 862         | 897     | 104  |
| OHIO    | 100            | 110     | 100    | 91      | 7.75            | 7.55    | 775         | 831     | 107  |
| TOTAL   |                |         |        |         |                 |         |             |         |      |
| 10 STS. | 2363           | 2370    | 2200   | 93      | 7.43            | 7.43    | 17548       | 17611   | 100  |

1/ NUMBER OF PIGS BORN SEPTEMBER THROUGH NOVEMBER, THAT WERE ON HAND DECEMBER 1, OR HAD BEEN SOLD.  
2/ INTENTIONS.





Crop Reporting Board

Statistical Reporting Service

July 1984

**ORDER FORM  
USDA CROP REPORTING BOARD REPORTS**

| Report Title  | Subscription Fee Domestic | Foreign |
|---|---------------------------|---------|
| <b>FIELD CROP SERIES</b>  |                           |         |
| <input type="checkbox"/> Crop Production (monthly/annual)<br>Plus single copies of:<br>Prospective Plantings<br>Acreage<br>Small Grains | \$30.00                   | \$37.50 |
| <input type="checkbox"/> Grain Stocks<br>Four issues plus copy of:<br>Soybean Stocks  | 12.00                     | 15.00   |
| <input type="checkbox"/> Potatoes & Sweetpotatoes<br>One issue plus 6 copies of:<br>Potato Stocks                                       | 9.50                      | 11.90   |
| <input type="checkbox"/> Rice Stocks (4 issues)   | 6.00                      | 7.50    |
| <b>FRUIT &amp; VEGETABLE SERIES</b>   |                           |         |
| <input type="checkbox"/> Celery (monthly)   | 16.00                     | 20.00   |
| <input type="checkbox"/> Noncitrus Fruits & Nuts (midyear/annual)   | 8.50                      | 10.65   |
| <input type="checkbox"/> Vegetables<br>Eleven seasonal issues plus (midyear & annual).  | 18.00                     | 22.50   |
| <b>LIVESTOCK SERIES</b>   |                           |         |
| <input type="checkbox"/> Cattle<br>Two issues plus monthly issues of:<br>Cattle on Feed   | 22.00                     | 27.50   |
| <input type="checkbox"/> Hogs & Pigs (4 issues)   | 10.00                     | 12.50   |
| <input type="checkbox"/> Livestock Slaughter (monthly/annual)   | 20.00                     | 25.00   |
| <b>POULTRY SERIES</b>   |                           |         |
| <input type="checkbox"/> Egg Products (monthly)   | 16.00                     | 20.00   |

| Report Title  | Subscription Fee Domestic | Foreign |
|---|---------------------------|---------|
| <input type="checkbox"/> Eggs, Chickens, & Turkeys<br>Monthly issues plus single copies of:<br>Hatchery Production Annual<br>Layers & Egg Prod. Annual<br>Poultry Prod., Disposition, & Income<br>Turkeys | \$25.00                   | \$31.25 |
| <input type="checkbox"/> Poultry Slaughter (monthly)  | 18.00                     | 22.50   |
| <b>DAIRY SERIES</b>   |                           |         |
| <input type="checkbox"/> Dairy Products (monthly/annual)  | 20.00                     | 25.00   |
| <input type="checkbox"/> Milk Production<br>Monthly issues plus single copy of:<br>Milk Prod., Disposition, & Income  | 18.00                     | 22.50   |
| <b>OTHER REPORTS</b>  |                           |         |
| <input type="checkbox"/> Agricultural Prices (monthly)  | 27.00                     | 33.75   |
| <input type="checkbox"/> Catfish (monthly)  | 16.00                     | 20.00   |
| <input type="checkbox"/> Cold Storage (monthly/annual)  | 23.00                     | 28.75   |
| <b>SPECIAL SINGLE COPY REPORTS</b>  |                           |         |
| <input type="checkbox"/> Scope & Methods of the Statistical Reporting Service<br>SN: 001-000-04389-2  | 5.00                      | 6.25    |
| <input type="checkbox"/> Agricultural Statistics, 1983<br>SN: 001-000-04401-0   | 13.00                     | 16.25   |
| <input type="checkbox"/> Usual Planting and Harvesting Dates for U.S. Field Crops<br>SN: 001-000-04418-8  | 3.00                      | 3.75    |

Note: For your convenience in ordering, we have grouped several publications together in packages. For example, when you subscribe to the Crop Production series you will receive 12 monthly copies and an annual summary of that report plus single copies of Prospective Plantings, Acreage, and Small Grains. If you have any questions about ordering, please call (202) 447-4021.

**ORDER FORM To:** Superintendent of Documents, U.S. Government Printing Office, Washington, D.C. 20402

Enclosed is \$ \_\_\_\_\_  check,  
 money order, or charge to my  
Deposit Account No.

\_\_\_\_\_-\_\_\_\_

Order No. \_\_\_\_\_



**Credit Card Orders Only**

Total charges \$ \_\_\_\_\_ Fill in the boxes below.

Credit Card No. \_\_\_\_\_

Expiration Date  
Month/Year \_\_\_\_\_

Company or personal name \_\_\_\_\_  
Additional address/attention line \_\_\_\_\_  
Street address \_\_\_\_\_  
City \_\_\_\_\_ State \_\_\_\_\_ ZIP Code \_\_\_\_\_  
(or Country) \_\_\_\_\_

| For Office Use Only |                        |
|---------------------|------------------------|
| Quantity            | Charges                |
| .....               | Enclosed .....         |
| .....               | To be mailed .....     |
| .....               | Subscriptions .....    |
| .....               | Postage .....          |
| .....               | Foreign handling ..... |
| .....               | MMOB .....             |
| .....               | OPNR .....             |
| .....               | UPNS .....             |
| .....               | Discount .....         |
| .....               | Refund .....           |

PLEASE PRINT OR TYPE

**UNITED STATES DEPARTMENT OF AGRICULTURE  
WASHINGTON, D.C. 20250**

**OFFICIAL BUSINESS  
PENALTY FOR PRIVATE USE, \$300**

To stop mailing  or to change your  
address  send this sheet with label  
intact, showing new address, to Crop  
Reporting Board Publications, SRS, U.S.  
Dept. of Agriculture, Rm 5829 South  
Building, 14th & Independence Ave. S.W.,  
Wash., D.C. 20250.

**POSTAGE AND FEES PAID  
U.S. DEPARTMENT OF  
AGRICULTURE  
AGR 101  
FIRST CLASS**

