

# Hogs and Pigs



**National  
Agricultural  
Statistics  
Service**

**United States  
Department of  
Agriculture**

**Washington, D.C.**

---

Released December 30, 1992, by the Agricultural Statistics Board. Estimates refer to December 1, September–November 1992, and revisions for 1991 and 1992.

## **U.S. Hog Inventory Up 4 Percent**

**U.S. inventory** of all hogs and pigs on December 1, 1992, was 59.8 million head. This was 4 percent above December 1991 but 3 percent below the September 1, 1992, inventory.

**Breeding inventory**, at 7.41 million head was up 2 percent from December 1, 1991, but virtually unchanged from September 1, 1992. **Market hog inventory**, at 52.4 million head was 4 percent above December 1, 1991, but 3 percent below September 1, 1992.

The **September–November 1992 U.S. pig crop** was 24.7 million head, 5 percent more than 1991 and up 11 percent from the same period in 1990. Sows farrowing during this period totaled 3.07 million head, up 3 percent from last year and 8 percent above two years ago. Pigs saved per litter was a record high 8.05 for the period compared to the previous record of 7.89 during September–November 1991.

**U.S. producers intend** to have 3.00 million sows farrow during the December 1992–February 1993 quarter, 3 percent more than the actual farrowings during the same period last year and 10 percent above 1991. Intended farrowings for March–May 1993 at 3.40 million sows, are 1 percent above 1992 and up 3 percent from the 1991 period.

## **16 State Inventory Increases 4 Percent**

The **16 quarterly States**, with an inventory of 54.7 million on December 1, 1992, were up 4 percent from last year and 10 percent above December 1, 1990. These 16 States accounted for approximately 91 percent of the U.S. hog and pig inventory.

In the **16 quarterly States**, the September–November pig crop was 22.5 million head, up 6 percent from last year and up 12 percent from two years ago. There were 2.80 million sows that farrowed during September–November, up 4 percent from a year earlier and 9 percent above the same period two years ago. Sows farrowing during September–November 1992 in the 16 States averaged 8.05 pigs per litter, a new record high, compared with 7.89 last year and 7.81 during the comparable period in 1990.

---

For information call Hubert Hamer (202) 720-3106. Office hours are 8:00 a.m. to 4:30 p.m. Et.

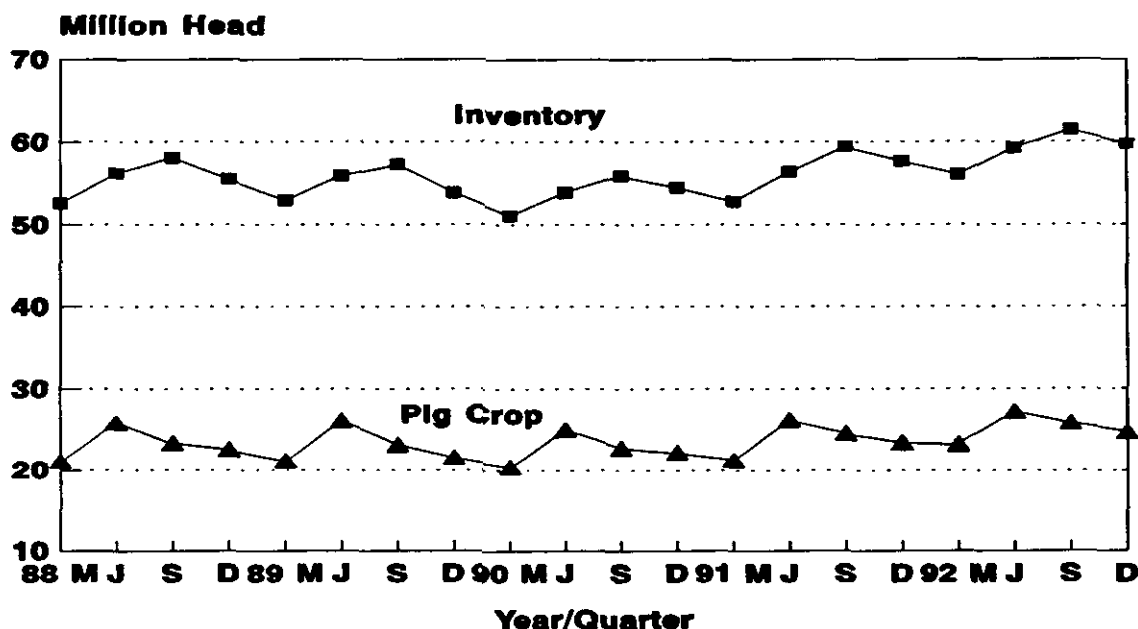
Mt An 4 (12-92)

Farrowing intentions in the 16 quarterly States for December 1992-February 1993 are 2.73 million head, up 4 percent from the corresponding period last year and 11 percent above two years ago. March-May 1993 intended farrowings, at 3.12 million head, are up 2 percent from a year earlier and 4 percent above 1991.

The number of operations with hogs totaled 249,500 during 1992, down 2 percent from last year and 9 percent below 1990. Places with 500 or more hogs on hand accounted for 12 percent of the operations and 69 percent of the inventory. a year ago 12 percent of the operations had inventories over 500 head and accounted for 68 percent of the inventory.

Value per head averaged \$71.60 on December 1, 1992, compared with \$68.90 in 1991 and \$85.40 in 1990. The December 1, 1992, inventory was valued at \$4.28 billion, compared to \$3.97 billion on December 1, 1991.

## December 1 Inventory & Pig Crop United States



This report was approved on December 30, 1992, by the Acting Secretary of Agriculture and the National Agricultural Statistics Service's Agricultural Statistics Board.

Acting Secretary of  
Agriculture  
Ann Veneman

Agricultural Statistics Board  
Chairperson  
Rich Allen

Hogs and Pigs: Inventory Number, by Class, Weight Group,  
and Quarter, United States 1990-92

| Item                  | 1990   | 1991       | 1992   | 1992 as % of |      |
|-----------------------|--------|------------|--------|--------------|------|
|                       |        |            |        | 1990         | 1991 |
|                       |        | 1,000 Head |        | Percent      |      |
| March 1 Inventory     |        |            |        |              |      |
| All Hogs and Pigs     | 51,150 | 52,820     | 56,190 | 110          | 106  |
| Kept For Breeding     | 6,806  | 6,997      | 7,155  | 105          | 102  |
| Market                | 44,344 | 45,823     | 49,035 | 111          | 107  |
| Market Hogs and Pigs  |        |            |        |              |      |
| By Weight Groups:     |        |            |        |              |      |
| Under 60 Pounds       | 16,895 | 17,678     | 19,045 | 113          | 108  |
| 60-119 Pounds         | 10,602 | 11,056     | 11,865 | 112          | 107  |
| 120-179 Pounds        | 9,209  | 9,330      | 9,780  | 106          | 105  |
| 180 Pounds and Over   | 7,638  | 7,759      | 8,345  | 109          | 108  |
| June 1 Inventory      |        |            |        |              |      |
| All Hogs and Pigs     | 53,850 | 56,410     | 59,295 | 110          | 105  |
| Kept For Breeding     | 7,075  | 7,505      | 7,608  | 108          | 101  |
| Market                | 46,775 | 48,905     | 51,687 | 111          | 106  |
| Market Hogs and Pigs  |        |            |        |              |      |
| By Weight Groups:     |        |            |        |              |      |
| Under 60 Pounds       | 19,806 | 20,755     | 21,557 | 109          | 104  |
| 60-119 Pounds         | 11,718 | 12,380     | 13,001 | 111          | 105  |
| 120-179 Pounds        | 8,535  | 8,821      | 9,612  | 113          | 109  |
| 180 Pounds and Over   | 6,716  | 6,949      | 7,517  | 112          | 108  |
| September 1 Inventory |        |            |        |              |      |
| All Hogs and Pigs     | 55,940 | 59,430     | 61,570 | 110          | 104  |
| Kept For Breeding     | 6,815  | 7,265      | 7,415  | 109          | 102  |
| Market                | 49,125 | 52,165     | 54,155 | 110          | 104  |
| Market Hogs and Pigs  |        |            |        |              |      |
| By Weight Groups:     |        |            |        |              |      |
| Under 60 Pounds       | 18,936 | 20,220     | 20,872 | 110          | 103  |
| 60-119 Pounds         | 12,218 | 13,050     | 13,619 | 111          | 104  |
| 120-179 Pounds        | 10,132 | 10,630     | 10,890 | 107          | 102  |
| 180 Pounds and Over   | 7,839  | 8,265      | 8,774  | 112          | 106  |
| December 1 Inventory  |        |            |        |              |      |
| All Hogs and Pigs     | 54,477 | 57,684     | 59,815 | 110          | 104  |
| Kept For Breeding     | 6,870  | 7,254      | 7,408  | 108          | 102  |
| Market                | 47,607 | 50,430     | 52,408 | 110          | 104  |
| Market Hogs and Pigs  |        |            |        |              |      |
| By Weight Groups:     |        |            |        |              |      |
| Under 60 Pounds       | 17,866 | 18,678     | 19,594 | 110          | 105  |
| 60-119 Pounds         | 12,206 | 12,969     | 13,326 | 109          | 103  |
| 120-179 Pounds        | 9,641  | 10,382     | 10,780 | 112          | 104  |
| 180 Pounds and Over   | 7,894  | 8,402      | 8,708  | 110          | 104  |

Farrowings: Number of Sows, Pig Crop, and Pigs Per Litter,  
United States 1990-93,

| Item                 | 1990       | 1991   | 1992   | 1993            | 1992 as % of 1993 | 1993 as % of 1992 |
|----------------------|------------|--------|--------|-----------------|-------------------|-------------------|
|                      | 1,000 Head |        |        |                 | Percent           |                   |
| Sows Farrowing:      |            |        |        |                 |                   |                   |
| December 1/-February | 2,602      | 2,714  | 2,900  | <u>2/</u> 2,998 | 111               | 107               |
| March-May            | 3,143      | 3,287  | 3,375  | <u>2/</u> 3,401 | 107               | 103               |
| December 1/-May      | 5,745      | 6,001  | 6,275  | <u>2/</u> 6,399 | 109               | 105               |
| June-August          | 2,879      | 3,105  | 3,182  |                 | 111               | 102               |
| September-November   | 2,838      | 2,969  | 3,069  |                 | 108               | 103               |
| June-November        | 5,717      | 6,074  | 6,251  |                 | 109               | 103               |
| Pig Crop:            |            |        |        |                 |                   |                   |
| December 1/-February | 20,362     | 21,349 | 23,320 |                 | 115               | 109               |
| March-May            | 24,959     | 26,158 | 27,257 |                 | 109               | 104               |
| December 1/-May      | 45,321     | 47,507 | 50,577 |                 | 112               | 106               |
| June-August          | 22,745     | 24,499 | 25,915 |                 | 114               | 106               |
| September-November   | 22,194     | 23,427 | 24,697 |                 | 111               | 105               |
| June-November        | 44,939     | 47,926 | 50,612 |                 | 113               | 106               |
| Pigs Per Litter:     |            | Number |        |                 |                   |                   |
| December 1/-February | 7.83       | 7.87   | 8.04   |                 | 103               | 102               |
| March-May            | 7.94       | 7.96   | 8.08   |                 | 102               | 102               |
| December 1/-May      | 7.89       | 7.92   | 8.06   |                 | 102               | 102               |
| June-August          | 7.90       | 7.89   | 8.14   |                 | 103               | 103               |
| September-November   | 7.82       | 7.89   | 8.05   |                 | 103               | 102               |
| June-November        | 7.86       | 7.89   | 8.10   |                 | 103               | 103               |

1/ December preceding year. 2/ Intentions.

Hogs and Pigs: Inventory Number, by Class, Weight Group,  
and Quarter, 16 States, 1990-92 1/

| Item                  | 1990       | 1991   | 1992   | 1992 as % of |      |
|-----------------------|------------|--------|--------|--------------|------|
|                       |            |        |        | 1990         | 1991 |
|                       | 1,000 Head |        |        | Percent      |      |
| March 1 Inventory     |            |        |        |              |      |
| All Hogs and Pigs     | 46,750     | 48,220 | 51,390 | 110          | 107  |
| Kept For Breeding     | 6,186      | 6,347  | 6,485  | 105          | 102  |
| Market                | 40,564     | 41,873 | 44,905 | 111          | 107  |
| Market Hogs and Pigs  |            |        |        |              |      |
| By Weight Groups:     |            |        |        |              |      |
| Under 60 Pounds       | 15,385     | 16,118 | 17,395 | 113          | 108  |
| 60-119 Pounds         | 9,702      | 10,056 | 10,825 | 112          | 108  |
| 120-179 Pounds        | 8,509      | 8,630  | 9,050  | 106          | 105  |
| 180 Pounds and Over   | 6,968      | 7,069  | 7,635  | 110          | 108  |
| June 1 Inventory      |            |        |        |              |      |
| All Hogs and Pigs     | 49,250     | 51,210 | 54,095 | 110          | 106  |
| Kept For Breeding     | 6,305      | 6,655  | 6,788  | 108          | 102  |
| Market                | 42,945     | 44,555 | 47,307 | 110          | 106  |
| Market Hogs and Pigs  |            |        |        |              |      |
| By Weight Groups:     |            |        |        |              |      |
| Under 60 Pounds       | 18,176     | 18,885 | 19,677 | 108          | 104  |
| 60-119 Pounds         | 10,728     | 11,250 | 11,861 | 111          | 105  |
| 120-179 Pounds        | 7,855      | 8,071  | 8,852  | 113          | 110  |
| 180 Pounds and Over   | 6,186      | 6,349  | 6,917  | 112          | 109  |
| September 1 Inventory |            |        |        |              |      |
| All Hogs and Pigs     | 50,840     | 54,030 | 56,120 | 110          | 104  |
| Kept For Breeding     | 6,215      | 6,625  | 6,765  | 109          | 102  |
| Market                | 44,625     | 47,405 | 49,355 | 111          | 104  |
| Market Hogs and Pigs  |            |        |        |              |      |
| By Weight Groups:     |            |        |        |              |      |
| Under 60 Pounds       | 17,136     | 18,330 | 18,952 | 111          | 103  |
| 60-119 Pounds         | 11,118     | 11,910 | 12,459 | 112          | 105  |
| 120-179 Pounds        | 9,332      | 9,760  | 10,025 | 107          | 103  |
| 180 Pounds and Over   | 7,039      | 7,405  | 7,919  | 113          | 107  |
| December 1 Inventory  |            |        |        |              |      |
| All Hogs and Pigs     | 49,580     | 52,705 | 54,680 | 110          | 104  |
| Kept For Breeding     | 6,167      | 6,540  | 6,695  | 109          | 102  |
| Market                | 43,413     | 46,165 | 47,985 | 111          | 104  |
| Market Hogs and Pigs  |            |        |        |              |      |
| By Weight Groups:     |            |        |        |              |      |
| Under 60 Pounds       | 16,223     | 17,055 | 17,910 | 110          | 105  |
| 60-119 Pounds         | 11,131     | 11,856 | 12,185 | 109          | 103  |
| 120-179 Pounds        | 8,808      | 9,520  | 9,885  | 112          | 104  |
| 180 Pounds and Over   | 7,251      | 7,734  | 8,005  | 110          | 104  |

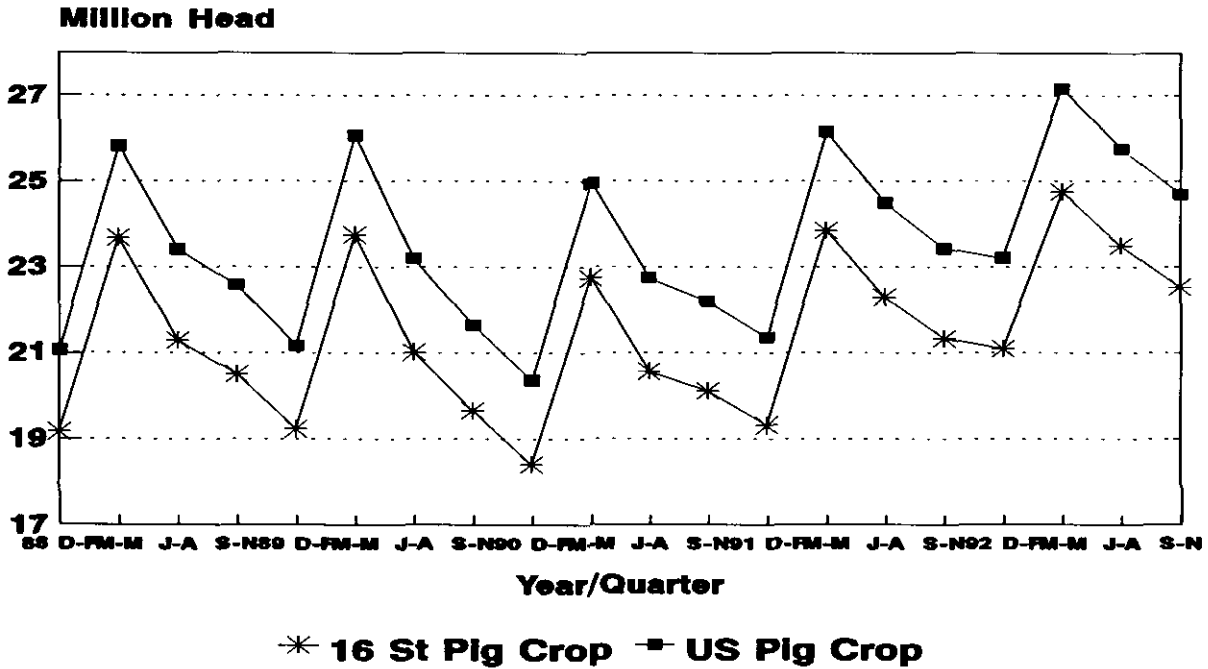
1/ GA, IL, IN, IA, KS, KY, MI, MN, MO, NE, NC, OH, PA, SD, TN, and WI

Farrowings: Number of Sows, Pig Crop, and Pigs per Litter,  
16 States, 1990-93 <sup>1/</sup>

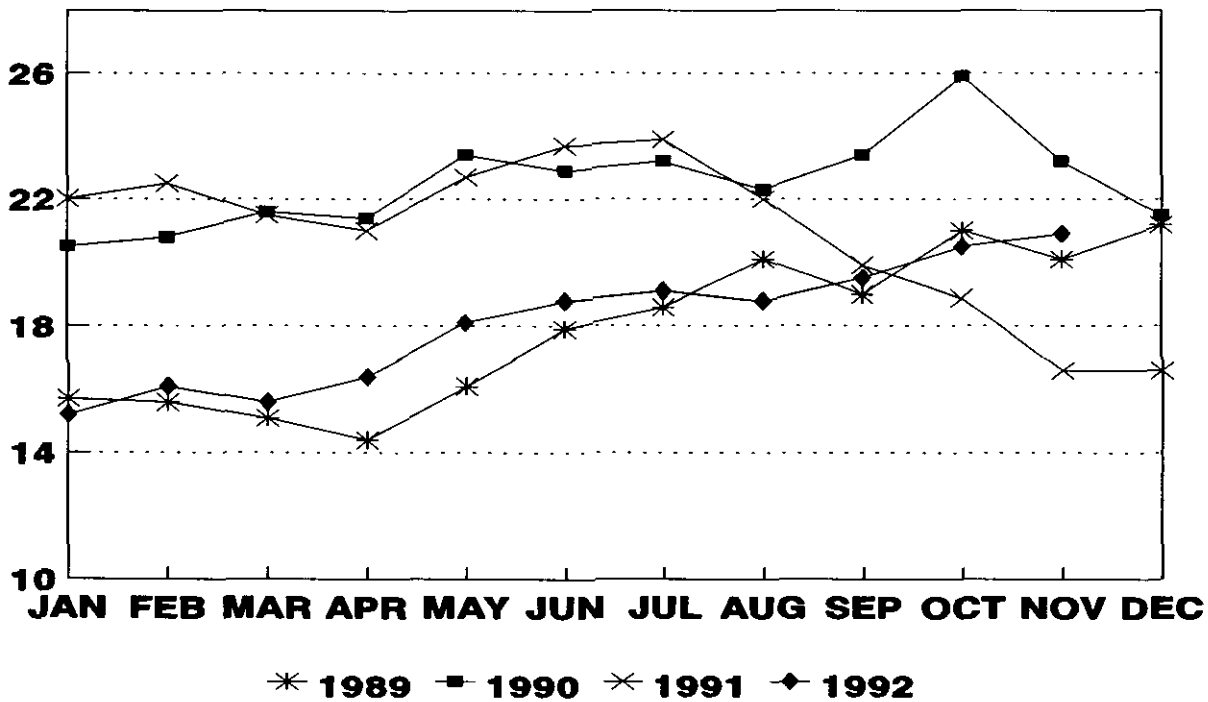
| Item                             | 1990       | 1991   | 1992   | 1993                | 1992 as % of: |      | 1993 as |         |
|----------------------------------|------------|--------|--------|---------------------|---------------|------|---------|---------|
|                                  |            |        |        |                     | 1990          | 1991 | Percent | of 1992 |
|                                  | 1,000 Head |        |        | Percent             |               |      |         |         |
| Sows Farrowing:                  |            |        |        |                     |               |      |         |         |
| December <sup>2/</sup> -February | 2,349      | 2,448  | 2,631  | <sup>3/</sup> 2,728 | 112           | 107  | 104     |         |
| March-May                        | 2,860      | 2,992  | 3,069  | <sup>3/</sup> 3,116 | 107           | 103  | 102     |         |
| December <sup>2/</sup> -May      | 5,209      | 5,440  | 5,700  | <sup>3/</sup> 5,844 | 109           | 105  | 103     |         |
| June-August                      | 2,605      | 2,825  | 2,894  |                     | 111           | 102  |         |         |
| September-November               | 2,574      | 2,704  | 2,799  |                     | 109           | 104  |         |         |
| June-November                    | 5,179      | 5,529  | 5,693  |                     | 110           | 103  |         |         |
| Pig Crop:                        |            |        |        |                     |               |      |         |         |
| December <sup>2/</sup> -February | 18,402     | 19,305 | 21,181 |                     | 115           | 110  |         |         |
| March-May                        | 22,741     | 23,846 | 24,802 |                     | 109           | 104  |         |         |
| December <sup>2/</sup> -May      | 41,143     | 43,151 | 45,983 |                     | 112           | 107  |         |         |
| June-August                      | 20,556     | 22,290 | 23,565 |                     | 115           | 106  |         |         |
| September-November               | 20,113     | 21,331 | 22,526 |                     | 112           | 106  |         |         |
| June-November                    | 40,669     | 43,621 | 46,091 |                     | 113           | 106  |         |         |
| Pigs per Litter:                 |            |        |        |                     |               |      |         |         |
|                                  | Number     |        |        |                     |               |      |         |         |
| December <sup>2/</sup> -February | 7.83       | 7.89   | 8.05   |                     | 103           | 102  |         |         |
| March-May                        | 7.95       | 7.97   | 8.08   |                     | 102           | 101  |         |         |
| December <sup>2/</sup> -May      | 7.90       | 7.93   | 8.07   |                     | 102           | 102  |         |         |
| June-August                      | 7.89       | 7.89   | 8.14   |                     | 103           | 103  |         |         |
| September-November               | 7.81       | 7.89   | 8.05   |                     | 103           | 102  |         |         |
| June-November                    | 7.85       | 7.89   | 8.10   |                     | 103           | 103  |         |         |

<sup>1/</sup> Georgia, Illinois, Indiana, Iowa, Kansas, Kentucky, Michigan, Minnesota, Missouri, Nebraska, North Carolina, Ohio, Pennsylvania, South Dakota, Tennessee, and Wisconsin. <sup>2/</sup> December Preceding Year. <sup>3/</sup> Intentions.

## Pig Crop U.S. & 16 States



## US Hog-Corn Price Ratio Bu of Corn=Value to 100 Lbs Hog LVWT



Hogs and Pigs: Inventory Numbers, Breeding, Market, and Total,  
by State and United States, December 1, 1991-92

| State   | Breeding   |         |                 | Market  |            |                 | Total      |         |                 |
|---------|------------|---------|-----------------|---------|------------|-----------------|------------|---------|-----------------|
|         | 1991       | 1992    |                 | 1991    | 1992       |                 | 1991       | 1992    |                 |
|         |            | Number  | as % of<br>1991 |         | Number     | as % of<br>1991 |            | Number  | as % of<br>1991 |
|         | 1,000 Head | Percent | 1,000 Head      | Percent | 1,000 Head | Percent         | 1,000 Head | Percent |                 |
| GA      | 160        | 155     | 97              | 970     | 945        | 97              | 1,130      | 1,100   | 97              |
| IL      | 740        | 720     | 97              | 5,160   | 5,180      | 100             | 5,900      | 5,900   | 100             |
| IN      | 555        | 555     | 100             | 4,045   | 4,045      | 100             | 4,600      | 4,600   | 100             |
| IA      | 1,800      | 1,950   | 108             | 13,200  | 14,450     | 109             | 15,000     | 16,400  | 109             |
| KS      | 170        | 160     | 94              | 1,260   | 1,280      | 102             | 1,430      | 1,440   | 101             |
| MN      | 590        | 580     | 98              | 4,310   | 4,120      | 96              | 4,900      | 4,700   | 96              |
| MO      | 380        | 375     | 99              | 2,320   | 2,475      | 107             | 2,700      | 2,850   | 106             |
| NE      | 550        | 580     | 105             | 3,950   | 4,070      | 103             | 4,500      | 4,650   | 103             |
| NC      | 440        | 500     | 114             | 3,210   | 4,000      | 125             | 3,650      | 4,500   | 123             |
| OH      | 225        | 225     | 100             | 1,700   | 1,575      | 93              | 1,925      | 1,800   | 94              |
| 10 Sts: | 5,610      | 5,800   | 103             | 40,125  | 42,140     | 105             | 45,735     | 47,940  | 105             |
| KY      | 135        | 120     | 89              | 815     | 750        | 92              | 950        | 870     | 92              |
| MI      | 175        | 175     | 100             | 1,125   | 1,105      | 98              | 1,300      | 1,280   | 98              |
| PA      | 100        | 105     | 105             | 820     | 845        | 103             | 920        | 950     | 103             |
| SD      | 260        | 235     | 90              | 1,690   | 1,595      | 94              | 1,950      | 1,830   | 94              |
| TN      | 90         | 85      | 94              | 580     | 515        | 89              | 670        | 600     | 90              |
| WI      | 170        | 175     | 103             | 1,010   | 1,035      | 102             | 1,180      | 1,210   | 103             |
| 16 Sts: | 6,540      | 6,695   | 102             | 46,165  | 47,985     | 104             | 52,705     | 54,680  | 104             |
| AL      | 65         | 60      | 92              | 310     | 310        | 100             | 375        | 370     | 99              |
| AK      | 0.40       | 0.40    | 100             | 1.0     | 1.6        | 160             | 1.4        | 2.0     | 143             |
| AZ      | 12         | 15      | 125             | 88      | 91         | 103             | 100        | 106     | 106             |
| AR      | 110        | 115     | 105             | 650     | 695        | 107             | 760        | 810     | 107             |
| CA      | 29         | 35      | 121             | 186     | 215        | 116             | 215        | 250     | 116             |
| CO      | 45         | 45      | 100             | 365     | 365        | 100             | 410        | 410     | 100             |
| CT      | 1.1        | 1.0     | 91              | 5.9     | 5.0        | 85              | 7.0        | 6.0     | 86              |
| DE      | 4.0        | 6.0     | 150             | 35      | 40         | 114             | 39         | 46      | 118             |
| FL      | 24         | 20      | 83              | 111     | 95         | 86              | 135        | 115     | 85              |
| HI      | 6.0        | 6.0     | 100             | 28      | 29         | 104             | 34         | 35      | 103             |
| ID      | 7.0        | 7.0     | 100             | 45      | 53         | 118             | 52         | 60      | 115             |
| LA      | 10         | 10      | 100             | 50      | 45         | 90              | 60         | 55      | 92              |
| ME      | 1.7        | 2.8     | 165             | 7.5     | 6.3        | 84              | 9.2        | 9.1     | 99              |
| MD      | 30         | 30      | 100             | 145     | 150        | 103             | 175        | 180     | 103             |
| MA      | 5.0        | 4.9     | 98              | 24      | 22         | 92              | 29         | 27      | 93              |
| MS      | 22         | 25      | 114             | 127     | 157        | 124             | 149        | 182     | 122             |
| MT      | 26         | 24      | 92              | 199     | 191        | 96              | 225        | 215     | 96              |
| NV      | 2.0        | 1.5     | 75              | 11      | 8.5        | 77              | 13         | 10      | 77              |
| NH      | 1.5        | 1.4     | 93              | 7.5     | 7.6        | 101             | 9.0        | 9.0     | 100             |
| NJ      | 2.3        | 2.0     | 87              | 22      | 26         | 118             | 24         | 28      | 117             |
| NM      | 4.0        | 4.0     | 100             | 20      | 19         | 95              | 24         | 23      | 96              |
| NY      | 14         | 15      | 107             | 84      | 90         | 107             | 98         | 105     | 107             |
| ND      | 37         | 35      | 95              | 253     | 255        | 101             | 290        | 290     | 100             |
| OK      | 34         | 35      | 103             | 156     | 205        | 131             | 190        | 240     | 126             |
| OR      | 11         | 10      | 91              | 64      | 60         | 94              | 75         | 70      | 93              |
| RI      | 0.70       | 0.60    | 86              | 5.3     | 5.4        | 102             | 6.0        | 6.0     | 100             |
| SC      | 59         | 56      | 95              | 346     | 329        | 95              | 405        | 385     | 95              |
| TX      | 80         | 75      | 94              | 420     | 465        | 111             | 500        | 540     | 108             |
| UT      | 5.0        | 6.0     | 120             | 33      | 38         | 115             | 38         | 44      | 116             |
| VT      | 0.90       | 0.90    | 100             | 4.3     | 3.8        | 88              | 5.2        | 4.7     | 90              |
| VA      | 48         | 47      | 98              | 362     | 343        | 95              | 410        | 390     | 95              |
| WA      | 7.0        | 6.0     | 86              | 51      | 40         | 78              | 58         | 46      | 79              |
| WV      | 6.0        | 5.0     | 83              | 28      | 27         | 96              | 34         | 32      | 94              |
| WY      | 3.0        | 5.0     | 167             | 21      | 30         | 143             | 24         | 35      | 146             |
| US      | 7,254      | 7,408   | 102             | 50,430  | 52,408     | 104             | 57,684     | 59,815  | 104             |



Market Hogs and Pigs: Inventory Number, by Weight Groups,  
State, and United States, December 1, 1991-92

| State   | Under 60 Lbs. |        | 60-119 Lbs. |        | 120-179 Lbs. |        | 180 Lbs and Over |       |
|---------|---------------|--------|-------------|--------|--------------|--------|------------------|-------|
|         | 1991          | 1992   | 1991        | 1992   | 1991         | 1992   | 1991             | 1992  |
|         | 1,000 Head    |        |             |        |              |        |                  |       |
| GA      | 415           | 385    | 260         | 255    | 180          | 190    | 115              | 115   |
| IL      | 1,900         | 1,920  | 1,240       | 1,260  | 1,100        | 1,100  | 920              | 900   |
| IN      | 1,380         | 1,415  | 1,110       | 1,100  | 860          | 860    | 695              | 670   |
| IA      | 4,570         | 5,250  | 3,550       | 3,800  | 2,840        | 3,000  | 2,240            | 2,400 |
| KS      | 450           | 450    | 335         | 345    | 260          | 270    | 215              | 215   |
| MN      | 1,630         | 1,560  | 1,100       | 1,030  | 860          | 840    | 720              | 690   |
| MO      | 935           | 970    | 565         | 655    | 440          | 445    | 380              | 405   |
| NE      | 1,560         | 1,620  | 1,000       | 1,020  | 770          | 800    | 620              | 630   |
| NC      | 1,375         | 1,600  | 730         | 880    | 600          | 820    | 505              | 700   |
| OH      | 640           | 620    | 435         | 395    | 345          | 310    | 280              | 250   |
| 10 Sts: | 14,855        | 15,790 | 10,325      | 10,740 | 8,255        | 8,635  | 6,690            | 6,975 |
| KY      | 320           | 285    | 210         | 195    | 155          | 145    | 130              | 125   |
| MI      | 350           | 350    | 260         | 250    | 275          | 265    | 240              | 240   |
| PA      | 280           | 305    | 216         | 215    | 180          | 185    | 144              | 140   |
| SD      | 670           | 600    | 435         | 390    | 325          | 335    | 260              | 270   |
| TN      | 225           | 195    | 150         | 120    | 115          | 110    | 90               | 90    |
| WI      | 355           | 385    | 260         | 275    | 215          | 210    | 180              | 165   |
| 16 Sts: | 17,055        | 17,910 | 11,856      | 12,185 | 9,520        | 9,885  | 7,734            | 8,005 |
| AL      | 112           | 113    | 90          | 92     | 73           | 69     | 35               | 36    |
| AK      | 0.50          | 0.80   | 0.20        | 0.40   | 0.20         | 0.20   | 0.10             | 0.20  |
| AZ      | 33            | 35     | 25          | 25     | 19           | 18     | 11               | 13    |
| AR      | 310           | 330    | 150         | 155    | 110          | 125    | 80               | 85    |
| CA      | 64            | 76     | 51          | 58     | 40           | 45     | 31               | 36    |
| CO      | 125           | 127    | 85          | 86     | 80           | 79     | 75               | 73    |
| CT      | 2.0           | 1.8    | 1.5         | 1.2    | 0.90         | 0.80   | 1.5              | 1.2   |
| DE      | 15            | 16     | 11          | 12     | 6.0          | 8.0    | 3.0              | 4.0   |
| FL      | 65            | 48     | 20          | 22     | 16           | 16     | 10               | 9.0   |
| HI      | 12            | 13     | 8.0         | 9.0    | 6.0          | 5.0    | 2.0              | 2.0   |
| ID      | 15            | 18     | 13          | 16     | 10           | 11     | 7.0              | 8.0   |
| LA      | 18            | 18     | 14          | 13     | 10           | 8.0    | 8.0              | 6.0   |
| ME      | 2.7           | 2.6    | 2.8         | 1.9    | 0.70         | 1.0    | 1.3              | 0.80  |
| MD      | 64            | 66     | 34          | 35     | 26           | 27     | 21               | 22    |
| MA      | 9.0           | 8.1    | 7.0         | 6.3    | 5.0          | 4.5    | 3.0              | 2.7   |
| MS      | 41            | 47     | 36          | 45     | 29           | 35     | 21               | 30    |
| MT      | 70            | 67     | 55          | 51     | 41           | 42     | 33               | 31    |
| NV      | 3.0           | 2.0    | 3.0         | 3.5    | 3.0          | 2.0    | 2.0              | 1.0   |
| NH      | 2.5           | 2.0    | 2.4         | 3.0    | 1.3          | 1.5    | 1.3              | 1.1   |
| NJ      | 3.8           | 7.0    | 5.9         | 6.0    | 5.6          | 8.0    | 6.4              | 5.0   |
| NM      | 9.0           | 7.0    | 4.0         | 4.0    | 3.0          | 4.0    | 4.0              | 4.0   |
| NY      | 30            | 35     | 24          | 25     | 17           | 16     | 13               | 14    |
| ND      | 95            | 90     | 60          | 62     | 50           | 53     | 48               | 50    |
| OK      | 60            | 75     | 45          | 61     | 27           | 34     | 24               | 35    |
| OR      | 18            | 18     | 17          | 15     | 16           | 15     | 13               | 12    |
| RI      | 2.9           | 2.5    | 1.3         | 1.5    | 0.50         | 0.70   | 0.60             | 0.70  |
| SC      | 135           | 134    | 89          | 87     | 73           | 64     | 49               | 44    |
| TX      | 127           | 135    | 140         | 140    | 89           | 105    | 64               | 85    |
| UT      | 11            | 14     | 8.0         | 9.0    | 7.0          | 9.0    | 7.0              | 6.0   |
| VT      | 1.7           | 1.7    | 1.5         | 1.3    | 0.50         | 0.40   | 0.60             | 0.40  |
| VA      | 128           | 133    | 87          | 73     | 75           | 70     | 72               | 67    |
| WA      | 17            | 16     | 11          | 10     | 13           | 8.0    | 10               | 6.0   |
| WV      | 14            | 12     | 5.0         | 5.0    | 4.0          | 4.0    | 5.0              | 6.0   |
| WY      | 7.0           | 12     | 5.0         | 6.0    | 4.0          | 6.0    | 5.0              | 6.0   |
| US      | 18,678        | 19,594 | 12,969      | 13,326 | 10,382       | 10,780 | 8,402            | 8,708 |

Farrowings: Number of Sows, Pigs per Litter and Pig Crop,  
by State and United States, December-February 1991-93 <sup>1/</sup>

| State                 | Sows Farrowing |       |                    |              | Pigs per Litter |      | Pig Crop <sup>2/</sup> |        |              |
|-----------------------|----------------|-------|--------------------|--------------|-----------------|------|------------------------|--------|--------------|
|                       | 1991           | 1992  | 1993 <sup>3/</sup> |              | 1991            | 1992 | 1991                   | 1992   |              |
|                       |                |       | Number             | as % of 1992 |                 |      |                        | Number | as % of 1991 |
|                       | 1,000 Head     |       | Percent            |              | 1,000 Head      |      | Percent                |        |              |
| GA                    | 62             | 60    | 59                 | 98           | 8.00            | 7.45 | 496                    | 447    | 90           |
| IL                    | 270            | 280   | 280                | 100          | 7.60            | 7.90 | 2,052                  | 2,212  | 108          |
| IN                    | 230            | 230   | 235                | 102          | 7.85            | 8.10 | 1,806                  | 1,863  | 103          |
| IA                    | 650            | 730   | 800                | 110          | 7.75            | 8.10 | 5,038                  | 5,913  | 117          |
| KS                    | 74             | 76    | 71                 | 93           | 7.90            | 8.00 | 585                    | 608    | 104          |
| MN                    | 230            | 250   | 245                | 98           | 8.10            | 8.20 | 1,863                  | 2,050  | 110          |
| MO                    | 140            | 145   | 145                | 100          | 7.70            | 7.80 | 1,078                  | 1,131  | 105          |
| NE                    | 220            | 220   | 235                | 107          | 8.00            | 8.10 | 1,760                  | 1,782  | 101          |
| NC                    | 165            | 215   | 245                | 114          | 8.25            | 8.40 | 1,361                  | 1,806  | 133          |
| OH                    | 90             | 90    | 90                 | 100          | 8.30            | 8.00 | 747                    | 720    | 96           |
| 10 Sts                | 2,131          | 2,296 | 2,405              | 105          | 7.88            | 8.07 | 16,786                 | 18,532 | 110          |
| KY                    | 46             | 50    | 45                 | 90           | 7.70            | 7.64 | 354                    | 382    | 108          |
| MI                    | 45             | 47    | 50                 | 106          | 7.90            | 8.00 | 356                    | 376    | 106          |
| PA                    | 38             | 40    | 40                 | 100          | 8.20            | 8.40 | 312                    | 336    | 108          |
| SD                    | 91             | 95    | 85                 | 89           | 8.10            | 7.90 | 737                    | 751    | 102          |
| TN                    | 33             | 36    | 33                 | 92           | 7.60            | 7.80 | 251                    | 281    | 112          |
| WI                    | 64             | 67    | 70                 | 104          | 7.95            | 7.80 | 509                    | 523    | 103          |
| 16 Sts                | 2,448          | 2,631 | 2,728              | 104          | 7.89            | 8.05 | 19,305                 | 21,181 | 110          |
| AL                    | 28             | 23    |                    |              | 6.9             | 8.1  | 193                    | 186    | 96           |
| AK                    | 0.05           | 0.09  |                    |              | 8.0             | 7.8  | 0.40                   | 0.7    | 175          |
| AZ                    | 5.0            | 5.0   |                    |              | 7.7             | 8.0  | 39                     | 40     | 103          |
| AR                    | 42             | 44    |                    |              | 8.4             | 8.4  | 353                    | 370    | 105          |
| CA                    | 11             | 11    |                    |              | 8.4             | 8.8  | 92                     | 97     | 105          |
| CO                    | 19             | 19    |                    |              | 8.1             | 8.8  | 154                    | 167    | 108          |
| CT                    | 0.10           | 0.40  |                    |              | 8.0             | 7.3  | 0.80                   | 2.9    | 363          |
| DE                    | 2.6            | 2.2   |                    |              | 8.1             | 8.6  | 21                     | 19     | 90           |
| FL                    | 7.0            | 7.0   |                    |              | 7.0             | 7.0  | 49                     | 49     | 100          |
| HI                    | 1.9            | 2.0   |                    |              | 6.4             | 6.5  | 12                     | 13     | 108          |
| ID                    | 2.3            | 3.0   |                    |              | 7.7             | 8.6  | 18                     | 26     | 144          |
| LA                    | 3.0            | 3.0   |                    |              | 7.1             | 8.0  | 21                     | 24     | 114          |
| ME                    | 0.50           | 0.30  |                    |              | 8.0             | 7.7  | 4.0                    | 2.3    | 58           |
| MD                    | 7.0            | 9.0   |                    |              | 7.9             | 9.0  | 55                     | 81     | 147          |
| MA                    | 1.4            | 1.3   |                    |              | 7.6             | 7.7  | 11                     | 10     | 91           |
| MS                    | 9.0            | 8.0   |                    |              | 7.8             | 7.5  | 70                     | 60     | 86           |
| MT                    | 12             | 11    |                    |              | 8.2             | 8.4  | 98                     | 92     | 94           |
| NV                    | 0.70           | 0.70  |                    |              | 7.0             | 8.0  | 4.9                    | 5.6    | 114          |
| NH                    | 0.30           | 0.20  |                    |              | 8.0             | 6.0  | 2.4                    | 1.2    | 50           |
| NJ                    | 0.60           | 0.30  |                    |              | 6.6             | 6.0  | 4.0                    | 1.8    | 45           |
| NM                    | 1.4            | 1.4   |                    |              | 7.0             | 7.0  | 9.8                    | 9.8    | 100          |
| NY                    | 4.0            | 4.0   |                    |              | 8.0             | 8.0  | 32                     | 32     | 100          |
| ND                    | 13             | 15    |                    |              | 7.9             | 7.9  | 103                    | 119    | 116          |
| OK                    | 7.0            | 9.0   |                    |              | 7.4             | 7.4  | 52                     | 67     | 129          |
| OR                    | 3.5            | 3.5   |                    |              | 8.0             | 8.5  | 28                     | 30     | 107          |
| RI                    | 0.20           | 0.20  |                    |              | 8.0             | 5.2  | 1.6                    | 1      | 63           |
| SC                    | 22             | 21    |                    |              | 7.0             | 7.2  | 154                    | 151    | 98           |
| TX                    | 30             | 36    |                    |              | 7.0             | 6.9  | 210                    | 248    | 118          |
| UT                    | 1.5            | 1.5   |                    |              | 7.5             | 7.1  | 11                     | 11     | 100          |
| VT                    | 0.30           | 0.20  |                    |              | 6.5             | 7.6  | 2.0                    | 1.5    | 75           |
| VA                    | 24             | 22    |                    |              | 8.0             | 8.3  | 192                    | 183    | 95           |
| WA                    | 3.0            | 2.0   |                    |              | 9.0             | 8.5  | 27                     | 17     | 63           |
| WV                    | 1.7            | 1.6   |                    |              | 7.6             | 7.7  | 13                     | 12     | 92           |
| WY                    | 0.80           | 1.0   |                    |              | 8.0             | 8.5  | 6.4                    | 8.5    | 133          |
| Oth Sts <sup>4/</sup> |                |       | 270                | 100          |                 |      |                        |        |              |
| US                    | 2,714          | 2,900 | 2,998              | 103          | 7.87            | 8.04 | 21,349                 | 23,320 | 109          |

<sup>1/</sup> December preceding year. <sup>2/</sup> Number of pigs born Dec-Feb, that were still on hand Mar 1, or had been sold. <sup>3/</sup> Intentions. <sup>4/</sup> Individual State estimates not available for 34 States.

Farrowings: Number of Sows, Pigs per Litter and Pig Crop,  
by State and United States, March-May 1991-93

| State      | Sows Farrowing |       |         |              | Pigs per Litter |      | Pig Crop 1/ |        |              |
|------------|----------------|-------|---------|--------------|-----------------|------|-------------|--------|--------------|
|            | 1991           | 1992  | 1993 2/ |              | 1991            | 1992 | 1991        | 1992   |              |
|            |                |       | Number  | as % of 1992 |                 |      |             | Number | as % of 1991 |
|            | 1,000 Head     |       | Percent |              | 1,000 Head      |      | Percent     |        |              |
| GA         | 66             | 64    | 61      | 95           | 7.75            | 7.85 | 512         | 502    | 98           |
| IL         | 340            | 340   | 330     | 97           | 7.60            | 7.75 | 2,584       | 2,635  | 102          |
| IN         | 255            | 260   | 260     | 100          | 8.10            | 8.15 | 2,066       | 2,119  | 103          |
| IA         | 850            | 890   | 940     | 106          | 7.95            | 8.10 | 6,758       | 7,209  | 107          |
| KS         | 77             | 79    | 74      | 94           | 7.90            | 8.10 | 608         | 640    | 105          |
| MN         | 270            | 275   | 275     | 100          | 8.25            | 8.30 | 2,228       | 2,283  | 102          |
| MO         | 185            | 175   | 175     | 100          | 7.60            | 7.85 | 1,406       | 1,374  | 98           |
| NE         | 250            | 250   | 260     | 104          | 7.95            | 8.10 | 1,988       | 2,025  | 102          |
| NC         | 180            | 220   | 250     | 114          | 8.70            | 8.55 | 1,566       | 1,881  | 120          |
| OH         | 115            | 110   | 100     | 91           | 8.10            | 8.20 | 932         | 902    | 97           |
| 10 Sts     | 2,588          | 2,663 | 2,725   | 102          | 7.98            | 8.10 | 20,648      | 21,570 | 104          |
| KY         | 47             | 49    | 46      | 94           | 7.75            | 7.90 | 364         | 387    | 106          |
| MI         | 83             | 89    | 86      | 97           | 7.90            | 8.10 | 656         | 721    | 110          |
| PA         | 40             | 41    | 41      | 100          | 8.40            | 8.30 | 336         | 340    | 101          |
| SD         | 126            | 120   | 115     | 96           | 8.00            | 8.00 | 1,008       | 960    | 95           |
| TN         | 40             | 37    | 33      | 89           | 7.50            | 7.60 | 300         | 281    | 94           |
| WI         | 68             | 70    | 70      | 100          | 7.85            | 7.75 | 534         | 543    | 102          |
| 16 Sts     | 2,992          | 3,069 | 3,116   | 102          | 7.97            | 8.08 | 23,846      | 24,802 | 104          |
| AL         | 26             | 26    |         |              | 7.8             | 7.8  | 203         | 203    | 100          |
| AK         | 0.10           | 0.15  |         |              | 8.0             | 8.0  | 0.80        | 1.2    | 150          |
| AZ         | 6.0            | 6.0   |         |              | 7.9             | 8.3  | 47          | 50     | 106          |
| AR         | 45             | 46    |         |              | 8.7             | 9.0  | 392         | 414    | 106          |
| CA         | 12             | 13    |         |              | 8.0             | 8.4  | 96          | 105    | 109          |
| CO         | 22             | 23    |         |              | 8.6             | 8.7  | 189         | 200    | 106          |
| CT         | 0.40           | 0.30  |         |              | 7.8             | 8.5  | 3.1         | 2.6    | 84           |
| DE         | 2.2            | 3.0   |         |              | 8.2             | 7.0  | 18          | 21     | 117          |
| FL         | 10             | 8.0   |         |              | 7.0             | 7.1  | 70          | 57     | 81           |
| HI         | 1.9            | 2.0   |         |              | 6.4             | 6.5  | 12          | 13     | 108          |
| ID         | 3.4            | 4.0   |         |              | 7.5             | 8.3  | 26          | 33     | 127          |
| LA         | 3.0            | 3.0   |         |              | 6.2             | 7.8  | 19          | 23     | 121          |
| ME         | 0.70           | 0.80  |         |              | 6.5             | 5.4  | 4.6         | 4.3    | 93           |
| MD         | 12             | 14    |         |              | 7.2             | 8.3  | 86          | 116    | 135          |
| MA         | 1.5            | 1.2   |         |              | 5.8             | 7.3  | 8.7         | 8.8    | 101          |
| MS         | 8.0            | 10    |         |              | 7.3             | 7.2  | 58          | 72     | 124          |
| MT         | 13             | 13    |         |              | 8.4             | 8.4  | 109         | 109    | 100          |
| NV         | 0.70           | 0.60  |         |              | 7.4             | 7.7  | 5.2         | 4.6    | 88           |
| NH         | 0.30           | 0.30  |         |              | 7.0             | 6.6  | 2.1         | 2.2    | 95           |
| NJ         | 0.70           | 0.80  |         |              | 6.7             | 6.1  | 4.7         | 4.9    | 104          |
| NM         | 1.7            | 1.7   |         |              | 6.8             | 8.0  | 12          | 14     | 117          |
| NY         | 7.0            | 6.0   |         |              | 7.6             | 8.5  | 53          | 51     | 96           |
| ND         | 17             | 19    |         |              | 7.7             | 8.0  | 131         | 152    | 116          |
| OK         | 14             | 16    |         |              | 7.1             | 7.2  | 99          | 115    | 116          |
| OR         | 4.0            | 3.5   |         |              | 8.2             | 8.0  | 33          | 28     | 85           |
| RI         | 0.20           | 0.20  |         |              | 8.0             | 5.5  | 1.6         | 1.1    | 69           |
| SC         | 24             | 23    |         |              | 7.5             | 7.4  | 180         | 170    | 94           |
| TX         | 26             | 28    |         |              | 7.4             | 7.1  | 192         | 199    | 104          |
| UT         | 2.3            | 2.4   |         |              | 6.7             | 7.0  | 15          | 17     | 113          |
| VT         | 0.40           | 0.40  |         |              | 7.0             | 6.9  | 2.8         | 2.8    | 100          |
| VA         | 23             | 25    |         |              | 8.2             | 8.5  | 189         | 213    | 113          |
| WA         | 2.5            | 2.0   |         |              | 8.0             | 8.5  | 20          | 17     | 85           |
| WV         | 2.2            | 2.0   |         |              | 8.0             | 7.6  | 18          | 15     | 83           |
| WY         | 1.6            | 1.8   |         |              | 7.0             | 9.0  | 11          | 16     | 145          |
| Oth Sts 3/ |                |       | 285     | 93           |                 |      |             |        |              |
| US         | 3,287          | 3,375 | 3,401   | 101          | 7.96            | 8.08 | 26,158      | 27,257 | 104          |

1/ Number of Pigs Born Mar-May, that were still on hand Jun 1, or had been sold. 2/ Intentions. 3/ Individual State estimates not available for 34 States.

Farrowings: Number of Sows, Pigs per Litter and Pig Crop,  
by State and United States, June-August 1991-92

| State  | Sows Farrowing |         |              | Pigs per Litter |      | Pig Crop <sup>1/</sup> |         |              |
|--------|----------------|---------|--------------|-----------------|------|------------------------|---------|--------------|
|        | 1991           | 1992    |              | 1991            | 1992 | 1991                   | 1992    |              |
|        |                | Number  | as % of 1991 |                 |      |                        | Number  | as % of 1991 |
|        | 1,000 Head     | Percent |              | Number          |      | 1,000 Head             | Percent |              |
| GA     | 60             | 61      | 102          | 7.65            | 7.75 | 459                    | 473     | 103          |
| IL     | 330            | 325     | 98           | 7.80            | 7.85 | 2,574                  | 2,551   | 99           |
| IN     | 245            | 250     | 102          | 7.85            | 8.15 | 1,923                  | 2,038   | 106          |
| IA     | 800            | 840     | 105          | 7.70            | 8.20 | 6,160                  | 6,888   | 112          |
| KS     | 74             | 77      | 104          | 7.85            | 8.25 | 581                    | 635     | 109          |
| MN     | 270            | 255     | 94           | 8.20            | 8.40 | 2,214                  | 2,142   | 97           |
| MO     | 155            | 165     | 106          | 7.45            | 7.70 | 1,155                  | 1,271   | 110          |
| NE     | 220            | 230     | 105          | 8.10            | 8.10 | 1,782                  | 1,863   | 105          |
| NC     | 195            | 225     | 115          | 8.70            | 8.60 | 1,697                  | 1,935   | 114          |
| OH     | 100            | 93      | 93           | 8.00            | 8.20 | 800                    | 763     | 95           |
| 10 Sts | 2,449          | 2,521   | 103          | 7.90            | 8.16 | 19,345                 | 20,559  | 106          |
| KY     | 50             | 51      | 102          | 7.85            | 8.10 | 393                    | 413     | 105          |
| MI     | 72             | 74      | 103          | 7.80            | 7.90 | 562                    | 585     | 104          |
| PA     | 39             | 42      | 108          | 8.20            | 8.50 | 320                    | 357     | 112          |
| SD     | 108            | 96      | 89           | 7.95            | 8.05 | 859                    | 773     | 90           |
| TN     | 40             | 40      | 100          | 7.20            | 7.60 | 288                    | 304     | 106          |
| WI     | 67             | 70      | 104          | 7.80            | 8.20 | 523                    | 574     | 110          |
| 16 Sts | 2,825          | 2,894   | 102          | 7.89            | 8.14 | 22,290                 | 23,565  | 106          |
| AL     | 20             | 21      | 105          | 8.2             | 7.5  | 164                    | 158     | 96           |
| AK     | 0.13           | 0.12    | 92           | 7.7             | 8.3  | 1.00                   | 1.0     | 100          |
| AZ     | 6.0            | 7.0     | 117          | 8.2             | 8.5  | 49                     | 60      | 122          |
| AR     | 45             | 47      | 104          | 8.4             | 9.0  | 378                    | 423     | 112          |
| CA     | 13             | 13      | 100          | 7.7             | 8.7  | 96                     | 109     | 114          |
| CO     | 22             | 21      | 95           | 8.2             | 8.7  | 180                    | 183     | 102          |
| CT     | 0.50           | 0.30    | 60           | 7.5             | 7.6  | 3.8                    | 2.3     | 61           |
| DE     | 1.8            | 2.5     | 139          | 8.9             | 8.6  | 16                     | 22      | 138          |
| FL     | 8              | 6.0     | 75           | 7.0             | 6.8  | 56                     | 41      | 73           |
| HI     | 1.9            | 2.0     | 105          | 6.4             | 7.1  | 12                     | 14      | 117          |
| ID     | 2.8            | 3.6     | 129          | 8.1             | 8.0  | 23                     | 29      | 126          |
| LA     | 3.0            | 3.0     | 100          | 7.4             | 8.1  | 22                     | 24      | 109          |
| ME     | 0.70           | 0.40    | 57           | 7.0             | 6.5  | 4.9                    | 2.6     | 53           |
| MD     | 9              | 11      | 122          | 8.0             | 8.0  | 72                     | 88      | 122          |
| MA     | 1.7            | 1.3     | 76           | 5.8             | 6.6  | 9.9                    | 8.6     | 87           |
| MS     | 9.5            | 13      | 137          | 7.6             | 7.3  | 72                     | 91      | 126          |
| MT     | 13             | 11      | 85           | 8.4             | 8.4  | 109                    | 92      | 84           |
| NV     | 0.80           | 0.60    | 75           | 7.8             | 7.6  | 6.2                    | 4.6     | 74           |
| NH     | 0.30           | 0.40    | 133          | 7.0             | 8.2  | 2.1                    | 3.3     | 157          |
| NJ     | 0.80           | 1.10    | 138          | 6.9             | 5.2  | 5.5                    | 5.7     | 104          |
| NM     | 1.5            | 1.5     | 100          | 7.7             | 8.0  | 12                     | 12      | 100          |
| NY     | 6.0            | 6.0     | 100          | 7.0             | 8.5  | 42                     | 51      | 121          |
| ND     | 16             | 17      | 106          | 7.6             | 8.2  | 122                    | 139     | 114          |
| OK     | 9              | 14      | 156          | 7.3             | 7.1  | 66                     | 99      | 150          |
| OR     | 3.4            | 3.0     | 88           | 7.8             | 8.5  | 27                     | 26      | 96           |
| RI     | 0.20           | 0.30    | 150          | 8.0             | 6.0  | 1.6                    | 1.8     | 113          |
| SC     | 23             | 20      | 87           | 7.5             | 7.6  | 173                    | 152     | 88           |
| TX     | 31             | 30      | 97           | 7.5             | 8.2  | 233                    | 246     | 106          |
| UT     | 2.0            | 2.1     | 105          | 7.4             | 7.0  | 15                     | 15      | 100          |
| VT     | 0.40           | 0.40    | 100          | 7.2             | 7.6  | 2.9                    | 3.0     | 103          |
| VA     | 22             | 23      | 105          | 8.5             | 8.3  | 187                    | 191     | 102          |
| WA     | 2.0            | 2.5     | 125          | 8.0             | 8.0  | 16                     | 20      | 125          |
| WV     | 2.1            | 2.0     | 95           | 7.4             | 7.1  | 16                     | 14      | 88           |
| WY     | 1.6            | 2.0     | 125          | 8.0             | 9.0  | 13                     | 18      | 138          |
| US     | 3,105          | 3,182   | 102          | 7.89            | 8.14 | 24,499                 | 25,915  | 106          |

<sup>1/</sup> Number of pigs born Jun-Aug, were on hand Sept 1, or had been sold.

Farrowings: Number of Sows, Pigs per Litter and Pig Crop,  
by State and United States, September-November 1991-92<sup>1/</sup>

| State  | Sows Farrowing |         |              | Pigs per Litter |            | Pig Crop 1/ |         |              |
|--------|----------------|---------|--------------|-----------------|------------|-------------|---------|--------------|
|        | 1991           | 1992    |              | 1991            | 1992       | 1991        | 1992    |              |
|        |                | Number  | as % of 1991 |                 |            |             | Number  | as % of 1991 |
|        | 1,000 Head     | Percent | Number       | Number          | 1,000 Head | Percent     | Percent |              |
| GA     | 60             | 57      | 95           | 7.65            | 7.60       | 459         | 433     | 94           |
| IL     | 320            | 315     | 98           | 7.70            | 7.80       | 2,464       | 2,457   | 100          |
| IN     | 230            | 230     | 100          | 7.90            | 8.10       | 1,817       | 1,863   | 103          |
| IA     | 740            | 810     | 109          | 7.65            | 8.00       | 5,661       | 6,480   | 114          |
| KS     | 73             | 71      | 97           | 7.81            | 8.00       | 570         | 568     | 100          |
| MN     | 245            | 235     | 96           | 8.25            | 8.50       | 2,021       | 1,998   | 99           |
| MO     | 155            | 165     | 106          | 7.80            | 7.80       | 1,209       | 1,287   | 106          |
| NE     | 230            | 245     | 107          | 8.00            | 8.00       | 1,840       | 1,960   | 107          |
| NC     | 205            | 240     | 117          | 8.60            | 8.50       | 1,763       | 2,040   | 116          |
| OH     | 90             | 90      | 100          | 8.30            | 8.25       | 747         | 743     | 99           |
| 10 Sts | 2,348          | 2,458   | 105          | 7.90            | 8.07       | 18,551      | 19,829  | 107          |
| KY     | 51             | 46      | 90           | 7.61            | 7.65       | 388         | 352     | 91           |
| MI     | 58             | 58      | 100          | 7.70            | 7.90       | 447         | 458     | 102          |
| PA     | 39             | 40      | 103          | 8.30            | 8.50       | 324         | 340     | 105          |
| SD     | 110            | 100     | 91           | 7.95            | 8.00       | 875         | 800     | 91           |
| TN     | 38             | 32      | 84           | 7.70            | 7.70       | 293         | 246     | 84           |
| WI     | 60             | 65      | 108          | 7.55            | 7.70       | 453         | 501     | 111          |
| 16 Sts | 2,704          | 2,799   | 104          | 7.89            | 8.05       | 21,331      | 22,526  | 106          |
| AL     | 20             | 19      | 95           | 7.8             | 8.0        | 156         | 152     | 97           |
| AK     | 0.05           | 0.13    | 260          | 8.0             | 7.7        | 0.4         | 1.0     | 250          |
| AZ     | 6.0            | 6.0     | 100          | 8.0             | 8.1        | 48          | 49      | 102          |
| AR     | 42             | 45      | 107          | 8.6             | 8.9        | 361         | 401     | 111          |
| CA     | 12             | 15      | 125          | 8.6             | 7.7        | 103         | 112     | 109          |
| CO     | 20             | 21      | 105          | 8.1             | 8.6        | 162         | 181     | 112          |
| CT     | 0.30           | 0.30    | 100          | 7.4             | 8.7        | 2.2         | 2.6     | 118          |
| DE     | 1.2            | 1.4     | 117          | 9.0             | 8.8        | 11          | 12      | 109          |
| FL     | 10.0           | 7.0     | 70           | 7.3             | 7.1        | 73          | 50      | 68           |
| HI     | 2.0            | 1.9     | 95           | 6.9             | 7.0        | 14          | 13      | 93           |
| ID     | 2.4            | 2.7     | 113          | 8.0             | 8.3        | 19          | 22      | 116          |
| LA     | 4.0            | 3.5     | 88           | 7.8             | 8.0        | 31          | 28      | 90           |
| ME     | 0.50           | 1.00    | 200          | 8.0             | 6.3        | 4.0         | 6.3     | 158          |
| MD     | 10.0           | 11      | 110          | 8.7             | 8.0        | 87          | 88      | 101          |
| MA     | 1.4            | 1.0     | 71           | 6.9             | 7.4        | 9.7         | 7.4     | 76           |
| MS     | 7.5            | 10      | 127          | 7.9             | 7.4        | 59          | 70      | 119          |
| MT     | 13             | 11      | 85           | 8.0             | 8.4        | 104         | 92      | 88           |
| NV     | 0.90           | 0.50    | 56           | 7.4             | 7.6        | 6.7         | 3.8     | 57           |
| NH     | 0.40           | 0.30    | 75           | 7.5             | 7.3        | 3.0         | 2.2     | 73           |
| NJ     | 0.50           | 1.0     | 200          | 7.0             | 7.0        | 3.5         | 7.0     | 200          |
| NM     | 1.5            | 1.6     | 107          | 7.3             | 7.4        | 11          | 12      | 109          |
| NY     | 6.0            | 6.0     | 100          | 6.0             | 7.5        | 36          | 45      | 125          |
| ND     | 14             | 13      | 93           | 7.8             | 8.0        | 109         | 104     | 95           |
| OK     | 12.0           | 16      | 133          | 7.8             | 7.2        | 94          | 115     | 122          |
| OR     | 3.5            | 4.0     | 114          | 8.0             | 7.6        | 28          | 30      | 107          |
| RI     | 0.40           | 0.30    | 75           | 6.6             | 8.0        | 2.6         | 2.4     | 92           |
| SC     | 22             | 21      | 95           | 7.4             | 7.2        | 163         | 151     | 93           |
| TX     | 23             | 21      | 91           | 7.0             | 8.0        | 161         | 168     | 104          |
| UT     | 2.0            | 2.3     | 115          | 7.9             | 8.0        | 16          | 18      | 113          |
| VT     | 0.30           | 0.30    | 100          | 7.0             | 6.6        | 2.1         | 2.0     | 95           |
| VA     | 21             | 20      | 95           | 8.2             | 8.2        | 172         | 164     | 95           |
| WA     | 2.0            | 2.5     | 125          | 9.0             | 8.0        | 18          | 20      | 111          |
| WV     | 1.9            | 2.0     | 105          | 7.4             | 7.5        | 14          | 15      | 107          |
| WY     | 1.4            | 2.5     | 179          | 8.3             | 9.5        | 12          | 24      | 200          |
| US     | 2,969          | 3,069   | 103          | 7.89            | 8.05       | 23,427      | 24,697  | 105          |

1/ Number of pigs born Sept-Nov, were on hand Dec 1, or had been sold.

Hogs and Pigs: Inventory Numbers, Breeding, Market, and Total,  
by State and United States, March 1, 1991-92

| State                      | Breeding         |           |                  | Market  |                  |         | Total            |          |     |
|----------------------------|------------------|-----------|------------------|---------|------------------|---------|------------------|----------|-----|
|                            | 1991             | 1992      |                  | 1991    | 1992             |         | 1991             | 1992     |     |
|                            |                  | :as % of: |                  |         | :as % of:        |         |                  | :as % of |     |
|                            | : Number: 1991 : |           | : Number: 1991 : |         | : Number: 1991 : |         | : Number: 1991 : |          |     |
|                            | 1,000 Head       | Percent   | 1,000 Head       | Percent | 1,000 Head       | Percent | 1,000 Head       | Percent  |     |
| GA                         | 165              | 160       | 97               | 1,005   | 1,000            | 100     | 1,170            | 1,160    | 99  |
| IL                         | 740              | 730       | 99               | 4,760   | 4,970            | 104     | 5,500            | 5,700    | 104 |
| IN                         | 555              | 550       | 99               | 3,695   | 3,800            | 103     | 4,250            | 4,350    | 102 |
| IA                         | 1,700            | 1,750     | 103              | 11,800  | 12,950           | 110     | 13,500           | 14,700   | 109 |
| KS                         | 180              | 185       | 103              | 1,320   | 1,265            | 96      | 1,500            | 1,450    | 97  |
| MN                         | 560              | 565       | 101              | 3,790   | 4,135            | 109     | 4,350            | 4,700    | 108 |
| MO                         | 410              | 375       | 91               | 2,290   | 2,275            | 99      | 2,700            | 2,650    | 98  |
| NE                         | 540              | 540       | 100              | 3,710   | 3,760            | 101     | 4,250            | 4,300    | 101 |
| NC                         | 350              | 450       | 129              | 2,550   | 3,450            | 135     | 2,900            | 3,900    | 134 |
| OH                         | 255              | 250       | 98               | 1,635   | 1,640            | 100     | 1,890            | 1,890    | 100 |
| 10 Sts:                    | 5,455            | 5,555     | 102              | 36,555  | 39,245           | 107     | 42,010           | 44,800   | 107 |
| KY                         | 120              | 130       | 108              | 700     | 760              | 109     | 820              | 890      | 109 |
| MI                         | 180              | 180       | 100              | 920     | 920              | 100     | 1,100            | 1,100    | 100 |
| PA                         | 97               | 105       | 108              | 783     | 825              | 105     | 880              | 930      | 106 |
| SD                         | 245              | 245       | 100              | 1,465   | 1,585            | 108     | 1,710            | 1,830    | 107 |
| TN                         | 80               | 100       | 125              | 440     | 560              | 127     | 520              | 660      | 127 |
| WI                         | 170              | 170       | 100              | 1,010   | 1,010            | 100     | 1,180            | 1,180    | 100 |
| 16 Sts:                    | 6,347            | 6,485     | 102              | 41,873  | 44,905           | 107     | 48,220           | 51,390   | 107 |
| Oth<br>Sts <sup>1/</sup> : | 650              | 670       | 103              | 3,950   | 4,130            | 105     | 4,600            | 4,800    | 104 |
| US                         | 6,997            | 7,155     | 102              | 45,823  | 49,035           | 107     | 52,820           | 56,190   | 106 |

<sup>1/</sup> Individual State estimates not available for the 34 other States.

Market Hogs and Pigs: Inventory Number, by Weight Groups,  
by State and United States, March 1, 1991-92

| State                      | Under<br>60 Lbs. |        | 60-119<br>Lbs. |        | 120-179<br>Lbs. |       | 180 Lbs<br>and Over |       |
|----------------------------|------------------|--------|----------------|--------|-----------------|-------|---------------------|-------|
|                            | 1991             | 1992   | 1991           | 1992   | 1991            | 1992  | 1991                | 1992  |
|                            | 1,000 Head       |        |                |        |                 |       |                     |       |
| GA                         | 425              | 405    | 265            | 270    | 205             | 210   | 110                 | 115   |
| IL                         | 1,790            | 1,860  | 1,170          | 1,210  | 990             | 1,050 | 810                 | 850   |
| IN                         | 1,450            | 1,460  | 910            | 950    | 730             | 760   | 605                 | 630   |
| IA                         | 4,270            | 4,840  | 2,830          | 3,100  | 2,600           | 2,680 | 2,100               | 2,330 |
| KS                         | 490              | 510    | 320            | 305    | 285             | 245   | 225                 | 205   |
| MN                         | 1,520            | 1,650  | 880            | 1,010  | 750             | 780   | 640                 | 695   |
| MO                         | 875              | 915    | 550            | 540    | 460             | 450   | 405                 | 370   |
| NE                         | 1,530            | 1,550  | 880            | 890    | 700             | 720   | 600                 | 600   |
| NC                         | 1,045            | 1,390  | 600            | 800    | 495             | 660   | 410                 | 600   |
| OH                         | 650              | 635    | 370            | 390    | 345             | 340   | 270                 | 275   |
| 10 Sts:                    | 14,045           | 15,215 | 8,775          | 9,465  | 7,560           | 7,895 | 6,175               | 6,670 |
| KY                         | 285              | 310    | 175            | 190    | 135             | 150   | 105                 | 110   |
| MI                         | 300              | 305    | 220            | 220    | 210             | 210   | 190                 | 185   |
| PA                         | 283              | 305    | 206            | 200    | 165             | 170   | 129                 | 150   |
| SD                         | 620              | 630    | 350            | 380    | 275             | 320   | 220                 | 255   |
| TN                         | 195              | 230    | 100            | 140    | 75              | 105   | 70                  | 85    |
| WI                         | 390              | 400    | 230            | 230    | 210             | 200   | 180                 | 180   |
| 16 Sts:                    | 16,118           | 17,395 | 10,056         | 10,825 | 8,630           | 9,050 | 7,069               | 7,635 |
| Oth<br>Sts <sub>1/</sub> : | 1,560            | 1,650  | 1,000          | 1,040  | 700             | 730   | 690                 | 710   |
| US                         | 17,678           | 19,045 | 11,056         | 11,865 | 9,330           | 9,780 | 7,759               | 8,345 |

1/ Individual State estimates not available for the 34 other States.

Hogs and Pigs: Inventory Numbers, Breeding, Market, and Total,  
by State and United States, June 1, 1991-92

| State                      | Breeding   |         |     | Market     |         |     | Total      |         |     |
|----------------------------|------------|---------|-----|------------|---------|-----|------------|---------|-----|
|                            | 1991       | 1992    |     | 1991       | 1992    |     | 1991       | 1992    |     |
|                            | : as % of: |         |     | : as % of: |         |     | : as % of: |         |     |
|                            | Number:    | 1991    |     | Number:    | 1991    |     | Number:    | 1991    |     |
|                            | 1,000 Head | Percent |     | 1,000 Head | Percent |     | 1,000 Head | Percent |     |
| GA                         | 165        | 160     | 97  | 1,005      | 1,000   | 100 | 1,170      | 1,160   | 99  |
| IL                         | 760        | 720     | 95  | 4,840      | 4,980   | 103 | 5,600      | 5,700   | 102 |
| IN                         | 565        | 575     | 102 | 3,935      | 4,025   | 102 | 4,500      | 4,600   | 102 |
| IA                         | 1,820      | 1,900   | 104 | 12,780     | 13,900  | 109 | 14,600     | 15,800  | 108 |
| KS                         | 180        | 185     | 103 | 1,340      | 1,335   | 100 | 1,520      | 1,520   | 100 |
| MN                         | 620        | 600     | 97  | 4,080      | 4,350   | 107 | 4,700      | 4,950   | 105 |
| MO                         | 410        | 395     | 96  | 2,490      | 2,505   | 101 | 2,900      | 2,900   | 100 |
| NE                         | 570        | 570     | 100 | 3,830      | 3,930   | 103 | 4,400      | 4,500   | 102 |
| NC                         | 375        | 465     | 124 | 2,775      | 3,735   | 135 | 3,150      | 4,200   | 133 |
| OH                         | 260        | 275     | 106 | 1,740      | 1,650   | 95  | 2,000      | 1,925   | 96  |
| 10 Sts:                    | 5,725      | 5,845   | 102 | 38,815     | 41,410  | 107 | 44,540     | 47,255  | 106 |
| KY                         | 125        | 125     | 100 | 705        | 745     | 106 | 830        | 870     | 105 |
| MI                         | 170        | 180     | 106 | 1,130      | 1,120   | 99  | 1,300      | 1,300   | 100 |
| PA                         | 100        | 103     | 103 | 790        | 827     | 105 | 890        | 930     | 104 |
| SD                         | 260        | 255     | 98  | 1,610      | 1,645   | 102 | 1,870      | 1,900   | 102 |
| TN                         | 105        | 100     | 95  | 545        | 540     | 99  | 650        | 640     | 98  |
| WI                         | 170        | 180     | 106 | 960        | 1,020   | 106 | 1,130      | 1,200   | 106 |
| 16 Sts:                    | 6,655      | 6,788   | 102 | 44,555     | 47,307  | 106 | 51,210     | 54,095  | 106 |
| Oth<br>Sts <sup>1/</sup> : | 850        | 820     | 96  | 4,350      | 4,380   | 101 | 5,200      | 5,200   | 100 |
| US                         | 7,505      | 7,608   | 101 | 48,905     | 51,687  | 106 | 56,410     | 59,295  | 105 |

<sup>1/</sup> Individual State estimates not available for the 34 other States.



Market Hogs and Pigs: Inventory Number, by Weight Groups,  
State, and United States, June 1, 1991-92

| State                      | Under<br>60 Lbs. |        | 60-119<br>Lbs. |        | 120-179<br>Lbs. |       | 180 Lbs<br>and Over |       |
|----------------------------|------------------|--------|----------------|--------|-----------------|-------|---------------------|-------|
|                            | 1991             | 1992   | 1991           | 1992   | 1991            | 1992  | 1991                | 1992  |
|                            | 1,000 Head       |        |                |        |                 |       |                     |       |
| GA                         | 435              | 430    | 275            | 270    | 190             | 195   | 105                 | 105   |
| IL                         | 1,950            | 1,970  | 1,260          | 1,270  | 920             | 970   | 710                 | 770   |
| IN                         | 1,530            | 1,590  | 1,055          | 1,060  | 760             | 770   | 590                 | 605   |
| IA                         | 5,500            | 5,800  | 3,260          | 3,500  | 2,250           | 2,600 | 1,770               | 2,000 |
| KS                         | 510              | 510    | 325            | 330    | 290             | 285   | 215                 | 210   |
| MN                         | 1,690            | 1,780  | 1,050          | 1,120  | 760             | 830   | 580                 | 620   |
| MO                         | 1,170            | 1,170  | 580            | 590    | 390             | 420   | 350                 | 325   |
| NE                         | 1,670            | 1,710  | 960            | 980    | 690             | 700   | 510                 | 540   |
| NC                         | 1,140            | 1,425  | 625            | 895    | 520             | 745   | 490                 | 670   |
| OH                         | 800              | 760    | 430            | 410    | 300             | 280   | 210                 | 200   |
| 10 Sts:                    | 16,395           | 17,145 | 9,820          | 10,425 | 7,070           | 7,795 | 5,530               | 6,045 |
| KY                         | 290              | 310    | 185            | 190    | 130             | 140   | 100                 | 105   |
| MI                         | 555              | 550    | 240            | 230    | 175             | 175   | 160                 | 165   |
| PA                         | 285              | 297    | 200            | 206    | 171             | 182   | 134                 | 142   |
| SD                         | 730              | 730    | 420            | 410    | 255             | 280   | 205                 | 225   |
| TN                         | 235              | 225    | 140            | 140    | 95              | 100   | 75                  | 75    |
| WI                         | 395              | 420    | 245            | 260    | 175             | 180   | 145                 | 160   |
| 16 Sts:                    | 18,885           | 19,677 | 11,250         | 11,861 | 8,071           | 8,852 | 6,349               | 6,917 |
| Oth<br>Sts <sup>1/</sup> : | 1,870            | 1,880  | 1,130          | 1,140  | 750             | 760   | 600                 | 600   |
| US                         | 20,755           | 21,557 | 12,380         | 13,001 | 8,821           | 9,612 | 6,949               | 7,517 |

<sup>1/</sup> Individual State estimates not available for the 34 other States.

Hogs and Pigs: Inventory Numbers, Breeding, Market, and Total,  
by State and United States, September 1, 1991-92

| State                      | Breeding   |         |                         | Market     |         |                         | Total      |         |                         |
|----------------------------|------------|---------|-------------------------|------------|---------|-------------------------|------------|---------|-------------------------|
|                            | 1991       | 1992    | as % of<br>Number: 1991 | 1991       | 1992    | as % of<br>Number: 1991 | 1991       | 1992    | as % of<br>Number: 1991 |
|                            | 1,000 Head | Percent |                         | 1,000 Head | Percent |                         | 1,000 Head | Percent |                         |
| GA                         | 160        | 160     | 100                     | 990        | 1,000   | 101                     | 1,150      | 1,160   | 101                     |
| IL                         | 770        | 730     | 95                      | 5,480      | 5,470   | 100                     | 6,250      | 6,200   | 99                      |
| IN                         | 570        | 580     | 102                     | 4,130      | 4,220   | 102                     | 4,700      | 4,800   | 102                     |
| IA                         | 1,820      | 1,950   | 107                     | 13,980     | 14,950  | 107                     | 15,800     | 16,900  | 107                     |
| KS                         | 175        | 180     | 103                     | 1,295      | 1,410   | 109                     | 1,470      | 1,590   | 108                     |
| MN                         | 620        | 570     | 92                      | 4,430      | 4,330   | 98                      | 5,050      | 4,900   | 97                      |
| MO                         | 375        | 385     | 103                     | 2,375      | 2,515   | 106                     | 2,750      | 2,900   | 105                     |
| NE                         | 530        | 550     | 104                     | 3,920      | 4,050   | 103                     | 4,450      | 4,600   | 103                     |
| NC                         | 410        | 500     | 122                     | 3,090      | 3,800   | 123                     | 3,500      | 4,300   | 123                     |
| OH                         | 250        | 235     | 94                      | 1,710      | 1,590   | 93                      | 1,960      | 1,825   | 93                      |
| 10 Sts:                    | 5,680      | 5,840   | 103                     | 41,400     | 43,335  | 105                     | 47,080     | 49,175  | 104                     |
| KY                         | 140        | 130     | 93                      | 760        | 800     | 105                     | 900        | 930     | 103                     |
| MI                         | 175        | 175     | 100                     | 1,175      | 1,175   | 100                     | 1,350      | 1,350   | 100                     |
| PA                         | 110        | 110     | 100                     | 830        | 870     | 105                     | 940        | 980     | 104                     |
| SD                         | 255        | 235     | 92                      | 1,665      | 1,570   | 94                      | 1,920      | 1,805   | 94                      |
| TN                         | 95         | 95      | 100                     | 575        | 565     | 98                      | 670        | 660     | 99                      |
| WI                         | 170        | 180     | 106                     | 1,000      | 1,040   | 104                     | 1,170      | 1,220   | 104                     |
| 16 Sts:                    | 6,625      | 6,765   | 102                     | 47,405     | 49,355  | 104                     | 54,030     | 56,120  | 104                     |
| Oth<br>Sts <sub>1/</sub> : | 640        | 650     | 102                     | 4,760      | 4,800   | 101                     | 5,400      | 5,450   | 101                     |
| US                         | 7,265      | 7,415   | 102                     | 52,165     | 54,155  | 104                     | 59,430     | 61,570  | 104                     |

1/ Individual State estimates not available for the 34 other States.

Market Hogs and Pigs: Inventory Number by Weight Groups,  
State, and United States, September 1, 1991-92

| State                   | Under 60 Lbs. |        | 60-119 Lbs. |        | 120-179 Lbs. |        | 180 Lbs and Over |       |
|-------------------------|---------------|--------|-------------|--------|--------------|--------|------------------|-------|
|                         | 1991          | 1992   | 1991        | 1992   | 1991         | 1992   | 1991             | 1992  |
|                         | 1,000 Head    |        |             |        |              |        |                  |       |
| GA                      | 410           | 415    | 255         | 255    | 195          | 195    | 130              | 135   |
| IL                      | 2,100         | 2,010  | 1,340       | 1,330  | 1,110        | 1,150  | 930              | 980   |
| IN                      | 1,515         | 1,580  | 1,040       | 1,055  | 925          | 915    | 650              | 670   |
| IA                      | 5,000         | 5,450  | 3,700       | 4,050  | 3,030        | 3,050  | 2,250            | 2,400 |
| KS                      | 475           | 515    | 315         | 340    | 285          | 310    | 220              | 245   |
| MN                      | 1,870         | 1,690  | 1,080       | 1,110  | 820          | 840    | 660              | 690   |
| MO                      | 985           | 1,065  | 545         | 560    | 460          | 470    | 385              | 420   |
| NE                      | 1,660         | 1,740  | 890         | 910    | 770          | 780    | 600              | 620   |
| NC                      | 1,300         | 1,530  | 715         | 860    | 590          | 760    | 485              | 650   |
| OH                      | 685           | 640    | 440         | 390    | 380          | 350    | 205              | 210   |
| 10 Sts:                 | 16,000        | 16,635 | 10,320      | 10,860 | 8,565        | 8,820  | 6,515            | 7,020 |
| KY                      | 320           | 330    | 200         | 215    | 140          | 150    | 100              | 105   |
| MI                      | 410           | 410    | 360         | 360    | 230          | 220    | 175              | 185   |
| PA                      | 305           | 322    | 210         | 214    | 175          | 185    | 140              | 149   |
| SD                      | 675           | 595    | 415         | 410    | 340          | 345    | 235              | 220   |
| TN                      | 225           | 235    | 145         | 135    | 120          | 115    | 85               | 80    |
| WI                      | 395           | 425    | 260         | 265    | 190          | 190    | 155              | 160   |
| 16 Sts:                 | 18,330        | 18,952 | 11,910      | 12,459 | 9,760        | 10,025 | 7,405            | 7,919 |
| Oth Sts <sup>1/</sup> : | 1,890         | 1,920  | 1,140       | 1,160  | 870          | 865    | 860              | 855   |
| US                      | 20,220        | 20,872 | 13,050      | 13,619 | 10,630       | 10,890 | 8,265            | 8,774 |

<sup>1/</sup> Individual State estimates not available for the 34 other States.

Hogs and Pigs: Number of Operations With Hogs, Inventory, Value Per Head, and Total Value, by State and United States, December 1, 1991-92 1/

| State  | Operations     |         | Inventory  |        | Value Per Head: |        | Total Value           |           |
|--------|----------------|---------|------------|--------|-----------------|--------|-----------------------|-----------|
|        | 1991 :         | 1992 :  | 1991 :     | 1992 : | 1991 :          | 1992 : | 1991 :                | 1992      |
|        | --- Number --- |         | 1,000 Head |        | -- Dollars --   |        | --- 1,000 Dollars --- |           |
| GA     | 7,000          | 6,500   | 1,130      | 1,100  | 67.00           | 67.00  | 75,710                | 73,700    |
| IL     | 14,800         | 13,500  | 5,900      | 5,900  | 67.00           | 67.00  | 395,300               | 395,300   |
| IN     | 12,000         | 12,800  | 4,600      | 4,600  | 69.00           | 73.00  | 317,400               | 335,800   |
| IA     | 34,000         | 35,000  | 15,000     | 16,400 | 69.00           | 76.00  | 1,035,000             | 1,246,400 |
| KS     | 5,600          | 5,700   | 1,430      | 1,440  | 65.00           | 66.00  | 92,950                | 95,040    |
| MN     | 14,000         | 15,000  | 4,900      | 4,700  | 67.00           | 69.00  | 328,300               | 324,300   |
| MO     | 15,000         | 13,000  | 2,700      | 2,850  | 66.00           | 65.00  | 178,200               | 185,250   |
| NE     | 13,000         | 13,000  | 4,500      | 4,650  | 69.00           | 70.00  | 310,500               | 325,500   |
| NC     | 8,800          | 8,500   | 3,650      | 4,500  | 65.00           | 65.00  | 237,250               | 292,500   |
| OH     | 13,000         | 14,000  | 1,925      | 1,800  | 67.00           | 68.00  | 128,975               | 122,400   |
| 10 Sts | 137,200        | 137,000 | 45,735     | 47,940 | 67.80           | 70.80  | 3,099,585             | 3,396,190 |
| KY     | 6,500          | 7,700   | 950        | 870    | 67.00           | 68.00  | 63,650                | 59,160    |
| MI     | 5,000          | 5,000   | 1,300      | 1,280  | 73.00           | 74.00  | 94,900                | 94,720    |
| PA     | 7,700          | 7,600   | 920        | 950    | 76.00           | 70.00  | 69,920                | 66,500    |
| SD     | 7,500          | 7,600   | 1,950      | 1,830  | 71.00           | 76.00  | 138,450               | 139,080   |
| TN     | 7,000          | 7,500   | 670        | 600    | 67.00           | 64.00  | 44,890                | 38,400    |
| WI     | 8,600          | 8,600   | 1,180      | 1,210  | 72.00           | 75.00  | 84,960                | 90,750    |
| 16 Sts | 179,500        | 181,000 | 52,705     | 54,680 | 68.20           | 71.00  | 3,596,355             | 3,884,800 |
| AL     | 6,000          | 5,000   | 375        | 370    | 78.00           | 73.00  | 29,250                | 27,010    |
| AK     | 40             | 50      | 1.4        | 2.0    | 160.00          | 165.00 | 224                   | 330       |
| AZ     | 400            | 400     | 100        | 106    | 85.00           | 91.00  | 8,500                 | 9,646     |
| AR     | 3,200          | 3,300   | 760        | 810    | 70.00           | 75.00  | 53,200                | 60,750    |
| CA     | 4,200          | 4,200   | 215        | 250    | 105.00          | 115.00 | 22,575                | 28,750    |
| CO     | 1,800          | 1,600   | 410        | 410    | 75.00           | 80.00  | 30,750                | 32,800    |
| CT     | 460            | 470     | 7.0        | 6.0    | 97.00           | 105.00 | 679                   | 630       |
| DE     | 400            | 380     | 39         | 46     | 67.00           | 63.00  | 2,613                 | 2,898     |
| FL     | 4,500          | 4,500   | 135        | 115    | 70.00           | 71.00  | 9,450                 | 8,165     |
| HA     | 450            | 450     | 34         | 35     | 145.00          | 130.00 | 4,930                 | 4,550     |
| ID     | 1,700          | 1,600   | 52         | 60     | 76.00           | 68.00  | 3,952                 | 4,080     |
| LA     | 2,000          | 1,900   | 60         | 55     | 79.00           | 85.00  | 4,740                 | 4,675     |
| ME     | 1,700          | 1,800   | 9.2        | 9.1    | 93.00           | 84.00  | 856                   | 764       |
| MD     | 1,100          | 1,200   | 175        | 180    | 77.00           | 66.00  | 13,475                | 11,880    |
| MA     | 870            | 870     | 29         | 27     | 92.00           | 86.00  | 2,668                 | 2,279     |
| MS     | 5,000          | 4,500   | 149        | 182    | 75.00           | 76.00  | 11,175                | 13,832    |
| MT     | 1,300          | 1,100   | 225        | 215    | 68.00           | 74.00  | 15,300                | 15,910    |
| NV     | 140            | 140     | 13         | 10     | 91.00           | 100.00 | 1,183                 | 1,000     |
| NH     | 750            | 750     | 9.0        | 9.0    | 91.00           | 91.00  | 819                   | 819       |
| NJ     | 700            | 700     | 24         | 28     | 84.00           | 77.00  | 2,016                 | 2,156     |
| NM     | 900            | 800     | 24         | 23     | 82.00           | 82.00  | 1,968                 | 1,886     |
| NY     | 3,000          | 3,100   | 98         | 105    | 77.00           | 72.00  | 7,546                 | 7,560     |
| ND     | 1,900          | 2,100   | 290        | 290    | 72.00           | 73.00  | 20,880                | 21,170    |
| OK     | 4,300          | 4,100   | 190        | 240    | 80.00           | 78.00  | 15,200                | 18,720    |
| OR     | 2,100          | 2,000   | 75         | 70     | 79.00           | 85.00  | 5,925                 | 5,950     |
| RI     | 80             | 90      | 6.0        | 6.0    | 88.00           | 80.00  | 528                   | 480       |
| SC     | 6,500          | 4,500   | 405        | 385    | 73.00           | 70.00  | 29,565                | 26,950    |
| TX     | 9,500          | 7,500   | 500        | 540    | 65.00           | 68.00  | 32,500                | 36,720    |
| UT     | 900            | 1,000   | 38         | 44     | 77.00           | 80.00  | 2,926                 | 3,520     |
| VT     | 1,100          | 1,000   | 5.2        | 4.7    | 98.00           | 105.00 | 510                   | 494       |
| VA     | 3,000          | 2,800   | 410        | 390    | 73.00           | 80.00  | 29,930                | 31,200    |
| WA     | 2,000          | 2,000   | 58         | 46     | 83.00           | 71.00  | 4,814                 | 3,266     |
| WV     | 2,000          | 2,100   | 34         | 32     | 82.00           | 79.00  | 2,788                 | 2,528     |
| WY     | 400            | 500     | 24         | 35     | 77.00           | 87.00  | 1,848                 | 3,045     |
| US     | 253,890        | 249,500 | 57,684     | 59,815 | 68.90           | 71.60  | 3,971,637             | 4,281,213 |

1/ An operation is any place having one or more hogs and pigs on hand at any time during the year. Totals may not add due to rounding.

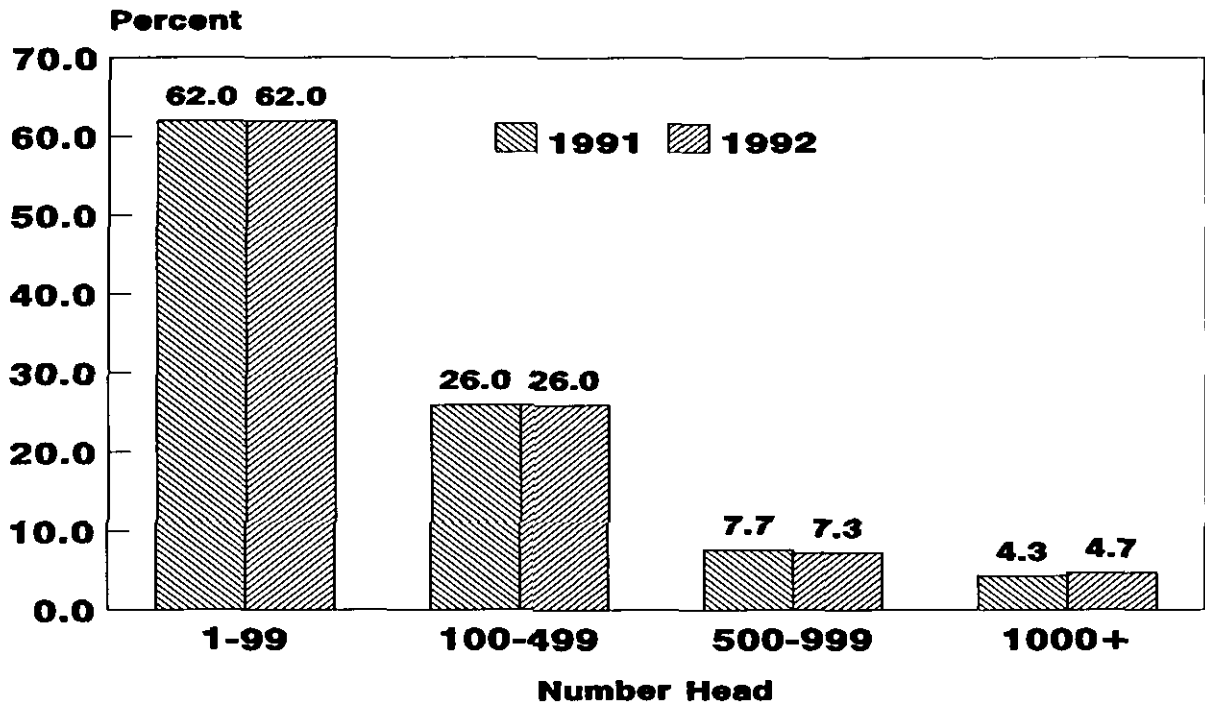
Hogs and Pigs: Percent of Operations and Inventory By Size Groups,  
Selected States, Regions, and United States, 1991-92, 1/

| State   | Operations Having:              |      |              |      |              |      |             |      |
|---------|---------------------------------|------|--------------|------|--------------|------|-------------|------|
|         | 1-99 Head                       |      | 100-499 Head |      | 500-999 Head |      | 1,000+ Head |      |
|         | 1991                            | 1992 | 1991         | 1992 | 1991         | 1992 | 1991        | 1992 |
| Percent |                                 |      |              |      |              |      |             |      |
| GA      | 76.0                            | 76.0 | 17.0         | 17.0 | 4.3          | 4.1  | 2.7         | 2.9  |
| IL      | 39.0                            | 36.0 | 39.0         | 39.0 | 14.0         | 14.0 | 8.0         | 11.0 |
| IN      | 43.0                            | 45.0 | 37.0         | 35.0 | 12.0         | 11.0 | 8.0         | 9.0  |
| IA      | 24.0                            | 23.0 | 48.0         | 47.0 | 19.0         | 20.0 | 9.0         | 10.0 |
| KS      | 52.0                            | 57.0 | 37.5         | 33.0 | 6.5          | 6.5  | 4.0         | 3.5  |
| MN      | 40.0                            | 45.0 | 40.0         | 36.0 | 13.0         | 11.0 | 7.0         | 8.0  |
| MO      | 62.0                            | 55.0 | 28.0         | 33.0 | 7.0          | 8.0  | 3.0         | 4.0  |
| NE      | 37.0                            | 37.0 | 45.0         | 44.5 | 12.0         | 12.0 | 6.0         | 6.5  |
| NC      | 81.0                            | 80.0 | 8.0          | 7.3  | 3.0          | 3.4  | 8.0         | 9.3  |
| OH      | 62.0                            | 66.0 | 27.0         | 24.0 | 7.0          | 6.0  | 4.0         | 4.0  |
| 10 Sts  | 46.0                            | 46.0 | 36.0         | 35.5 | 11.5         | 11.0 | 6.5         | 7.5  |
| KY      | 75.0                            | 81.0 | 18.0         | 14.0 | 4.0          | 3.0  | 3.0         | 2.0  |
| MI      | 67.0                            | 64.0 | 24.5         | 26.0 | 4.0          | 5.0  | 4.5         | 5.0  |
| PA      | 81.0                            | 82.0 | 13.0         | 12.0 | 3.5          | 3.5  | 2.5         | 2.5  |
| SD      | 40.0                            | 38.0 | 48.0         | 50.0 | 9.2          | 9.0  | 2.8         | 3.0  |
| TN      | 78.0                            | 80.0 | 17.5         | 16.0 | 2.5          | 2.7  | 2.0         | 1.3  |
| WI      | 65.0                            | 66.0 | 27.0         | 27.0 | 6.4          | 5.1  | 1.6         | 1.9  |
| 16 Sts  | 51.0                            | 53.0 | 33.0         | 32.0 | 10.0         | 9.0  | 6.0         | 6.0  |
| US      | 62.0                            | 62.0 | 26.0         | 26.0 | 7.7          | 7.3  | 4.3         | 4.7  |
| State   | Inventory on Operations Having: |      |              |      |              |      |             |      |
|         | 1-99 Head                       |      | 100-499 Head |      | 500-999 Head |      | 1,000+ Head |      |
|         | 1991                            | 1992 | 1991         | 1992 | 1991         | 1992 | 1991        | 1992 |
| Percent |                                 |      |              |      |              |      |             |      |
| GA      | 12.0                            | 12.0 | 26.0         | 22.0 | 19.0         | 17.0 | 43.0        | 49.0 |
| IL      | 4.0                             | 3.5  | 26.0         | 23.0 | 25.0         | 22.5 | 45.0        | 51.0 |
| IN      | 4.0                             | 4.0  | 24.0         | 23.0 | 23.0         | 22.0 | 49.0        | 51.0 |
| IA      | 2.5                             | 2.5  | 29.5         | 26.5 | 31.0         | 30.0 | 37.0        | 41.0 |
| KS      | 7.5                             | 8.5  | 32.5         | 28.0 | 16.0         | 18.0 | 44.0        | 45.5 |
| MN      | 4.5                             | 5.5  | 29.5         | 28.5 | 29.0         | 24.0 | 37.0        | 42.0 |
| MO      | 9.0                             | 8.0  | 34.5         | 33.0 | 22.5         | 22.0 | 34.0        | 37.0 |
| NE      | 4.5                             | 4.5  | 31.5         | 30.0 | 24.0         | 24.0 | 40.0        | 41.5 |
| NC      | 3.0                             | 2.0  | 4.4          | 3.5  | 5.6          | 4.5  | 87.0        | 90.0 |
| OH      | 9.0                             | 11.0 | 35.0         | 35.0 | 26.0         | 26.0 | 30.0        | 28.0 |
| 10 Sts  | 4.5                             | 4.0  | 27.5         | 25.0 | 25.0         | 23.0 | 43.0        | 48.0 |
| KY      | 13.0                            | 14.0 | 29.0         | 28.0 | 19.0         | 18.0 | 39.0        | 40.0 |
| MI      | 5.5                             | 6.8  | 22.0         | 23.0 | 12.5         | 12.2 | 60.0        | 58.0 |
| PA      | 10.0                            | 10.0 | 25.0         | 25.0 | 20.0         | 20.0 | 45.0        | 45.0 |
| SD      | 6.0                             | 5.5  | 43.0         | 44.0 | 24.0         | 23.5 | 27.0        | 27.0 |
| TN      | 18.0                            | 20.0 | 36.0         | 33.0 | 18.0         | 20.0 | 28.0        | 27.0 |
| WI      | 11.0                            | 10.0 | 38.0         | 38.0 | 29.0         | 25.0 | 22.0        | 27.0 |
| 16 Sts  | 5.0                             | 5.0  | 28.0         | 27.0 | 25.0         | 22.0 | 42.0        | 46.0 |
| US      | 5.5                             | 5.5  | 26.5         | 25.5 | 24.0         | 22.0 | 44.0        | 47.0 |

1/ An operation is any place having one or more hogs and pigs on hand any time during the year. Percents reflect average distributions based primarily on mid-year surveys.

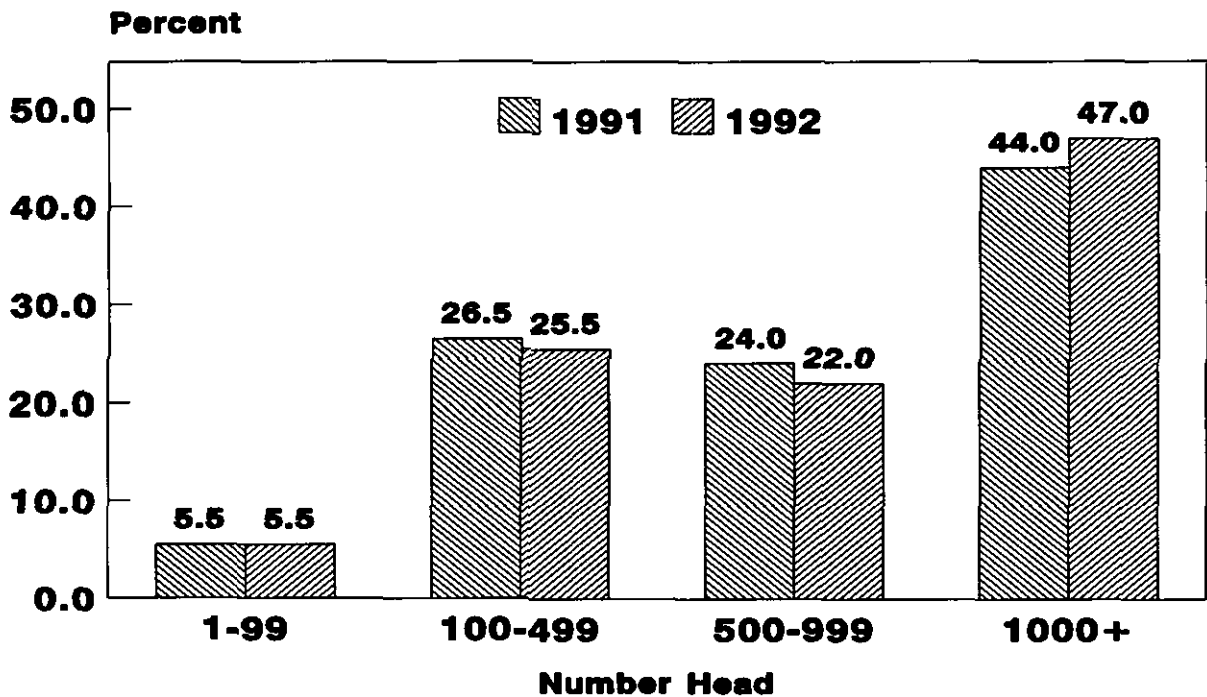
## U.S. Hog Operations

Percent by Size Group, 1991-92



## U.S. Hog Inventory

Percent by Size Group, 1991-92



## Reliability of December 1 Hogs and Pigs Estimates

**Survey Procedures:** A random sample of U.S. producers was surveyed to provide data for these estimates. Survey procedures ensured that all hog and pig producers, regardless of size, had a chance to be included in the survey. Large producers were sampled more heavily than small operations. Data were collected from about 81,000 operations during the first half of December by mail, telephone, and face-to-face personal interviews. Regardless of when operations responded, they were asked to report inventories as of December 1.

**Estimation Procedures:** These hogs and pigs estimates were prepared by the Agricultural Statistics Board after reviewing recommendations and analysis submitted by each State office. National and State survey data were reviewed for reasonableness with each other and with estimates from past years using a balance sheet. The balance sheet begins with the previous inventory estimate, adds to it estimates of births and imports, and subtracts estimates of slaughter, exports, and deaths. This indicated ending inventory level is compared to the Agricultural Statistics Board estimate for reasonableness.

**Revision Policy:** Revisions to previous estimates are made to improve quarter to quarter relationships. Estimates for the previous two quarters are subject to revision when current estimates are made. In December, estimates for all quarters of the current and previous years are reviewed. The reviews are primarily based on hog check-off receipts and slaughter. Estimates will also be reviewed after data from the Department of Commerce's five-year Census of Agriculture are available. No revisions will be made after that date.

**Reliability:** Since all operations raising hogs are not included in the sample, survey estimates are subject to sampling variability. Survey results are also subject to non-sampling errors such as omissions, duplication, and mistakes in reporting, recording, and processing the data. The effects of these errors cannot be measured directly. They are minimized through rigid quality controls in the data collection process and through a careful review of all reported data for consistency and reasonableness.

To assist users in evaluating the reliability of the estimates in this report, the "Root Mean Square Error" is shown for selected items in the table below. The "Root Mean Square Error" is a statistical measure based on past performance and is computed using the difference between first and final estimates. The "Root Mean Square Error" for hog inventory estimates over the past 16 quarters is 0.9 percent. This means that chances are 2 out of 3 that the final estimate will not be above or below the current estimate of 59.8 million head by more than 0.9 percent, or about 538,000 head. Chances are 9 out of 10 that the difference will not exceed 1.6 percent, or about 957,000 (the 90 percent confidence level).

Reliability of December 1 Hog Estimates 1/

|                     | 90% Confidence Level   |         | Difference Between First and Final Estimates <u>2/</u> |         |          |         | Number of Quarters <u>3/</u> |                   |
|---------------------|------------------------|---------|--------------------------------------------------------|---------|----------|---------|------------------------------|-------------------|
|                     | Root Mean Square Error | Percent | (000) Head                                             | Average | Smallest | Largest | First Above Final            | First Below Final |
| All Hogs & Pigs     | 0.9                    | 1.6     | 957                                                    | -4      | 30       | -1130   | 6                            | 10                |
| Pig Crop            | 1.3                    | 2.3     | 568                                                    | 102     | 3        | -562    | 4                            | 12                |
| Expected Farrowings |                        |         |                                                        |         |          |         |                              |                   |
| Next Quarter        | 2.8                    | 5.0     | 150                                                    | -8      | 0        | 132     | 9                            | 6                 |
| Following Quarter   | 4.0                    | 7.1     | 241                                                    | 25      | -2       | 216     | 8                            | 8                 |

1/ Based on quarterly records for the past 16 quarters.

2/ Records for the past 16 quarters.

3/ There was no change from first to final estimates of next quarter expected farrowings in 1 of the 16 quarters represented.

The next "Hogs and Pigs" report will be released at 3:00 p.m. ET on March 26, 1993.



## Index

|                                                                                                                      | Page |
|----------------------------------------------------------------------------------------------------------------------|------|
| Farrowings, Number of Sows, Pig Crop, and Pigs<br>Per Litter, 16 States.....                                         | 6    |
| Farrowings, Number of Sows, Pig Crop, and Pigs Per Litter, U.S.....                                                  | 4    |
| Farrowings, Number of Sows, Pigs Per Litter, and Pig Crop,<br>December-February, by State.....                       | 10   |
| Farrowings, Number of Sows, Pigs Per Litter, and Pig Crop,<br>June-August, by State.....                             | 12   |
| Farrowings, Number of Sows, Pigs Per Litter, and Pig Crop,<br>March-May, by State.....                               | 11   |
| Farrowings, Number of Sows, Pigs Per Litter, and Pig Crop,<br>September-November, by State.....                      | 13   |
| Hogs and Pigs Inventory Number, by Quarter, 16 States.....                                                           | 5    |
| Hogs and Pigs Inventory Number, by Quarter, U.S.....                                                                 | 3    |
| Inventory, Breeding, Market, and Total, by State,<br>December 1.....                                                 | 8    |
| Inventory, Market Hogs by Weight Groups, by State,<br>December 1.....                                                | 9    |
| Inventory, Total and Breeding, Market Hogs, and Market Hogs,<br>by Weight Groups, Quarterly States, June 1.....      | 16   |
| Inventory, Total and Breeding, Market Hogs, and Market Hogs,<br>by Weight Groups, Quarterly States, March 1.....     | 14   |
| Inventory, Total and Breeding, Market Hogs, and Market Hogs,<br>by Weight Groups, Quarterly States, September 1..... | 18   |
| Number of Operations with Hogs, Inventory, Value Per Head,<br>and Total Value, December 1.....                       | 20   |
| Percent of Operations and Inventory by Size Groups,<br>Quarterly States.....                                         | 21   |
| Survey and Estimation Procedures, Revision Policy and<br>Reliability.....                                            | 23   |

