

# Hogs and Pigs



USDA  
Washington, D.C.

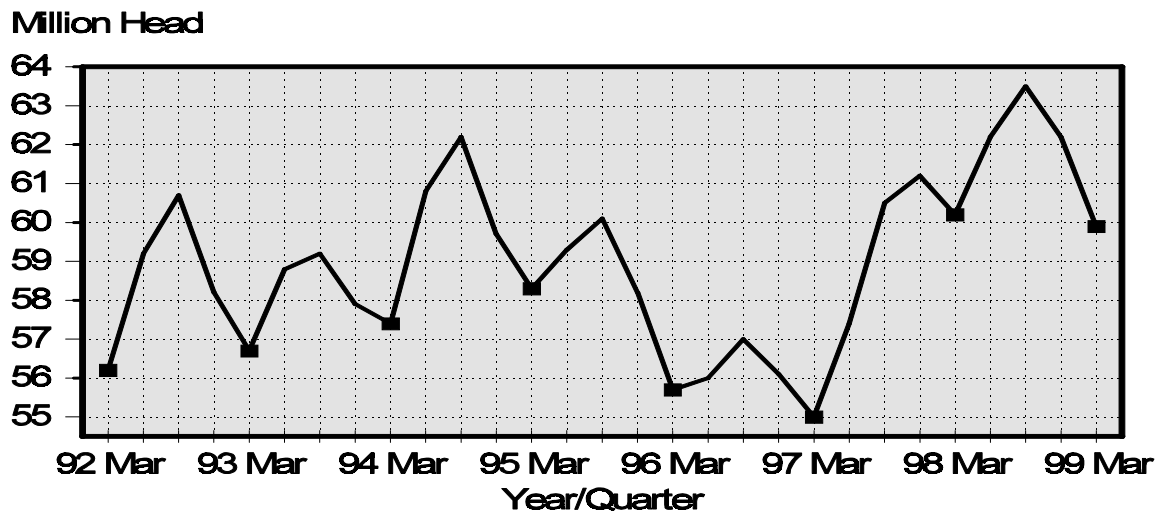
Released March 26, 1999, by the National Agricultural Statistics Service (NASS), Agricultural Statistics Board, U.S. Department of Agriculture. For information on "Hogs and Pigs" call Greg Matli at 202-720-3106, office hours 7:00 a.m. to 4:30 p.m. ET.

## U.S. Hog Inventory Down 1 Percent

**U.S. inventory** of all hogs and pigs on March 1, 1999, was 59.9 million head. This was 1 percent below March 1998, and 4 percent below December 1, 1998.

**Breeding inventory**, at 6.53 million head, was down 6 percent from March 1, 1998 and down 2 percent from December 1, 1998. **Market hog inventory**, at 53.3 million head, was slightly above last year, but 4 percent below last quarter.

## Quarterly Hogs and Pigs Inventory United States



**The December 1998-February 1999 U.S. pig crop**, at 25.3 million head, was 1 percent less than 1998, but 9 percent more than 1997. Sows farrowing during this period totaled 2.89 million head, 1 percent below last year. The sows farrowed during this quarter represented 43 percent of the breeding herd. The average pigs per litter rose to an average of 8.73 pigs saved per litter for the December-February period, compared to 8.70 pigs last year. Pigs saved per litter by size of operation ranged from 7.60 for operations with 1-99 hogs to 8.90 for operations with more than 5,000 hogs and pigs.

**U.S. hog producers** intend to have 2.88 million sows farrow during the March-May 1999 quarter, 7 percent below the actual farrowings during the same period in 1998 and 1 percent below 1997. Intended farrowings for June-August 1999, at 2.84 million sows, are 7 percent below the same period last year and 4 percent below 1997.

The total number of hogs under contract, owned by operations with over 5,000 head, but raised by contractees, accounted for 30 percent of the total U.S. hog inventory.

### Revisions

**All inventory and pig crop estimates** for March 1998 through December 1998 were reviewed using final pig crop, official slaughter, import, and export data in U.S. level balance sheets. Based on the findings of this review, small adjustments of less than one half percent were made to the inventory level for December 1. Adjustments of less than one half percent were made to pig crops for September-November.

---

This report was approved on March 26, 1999.



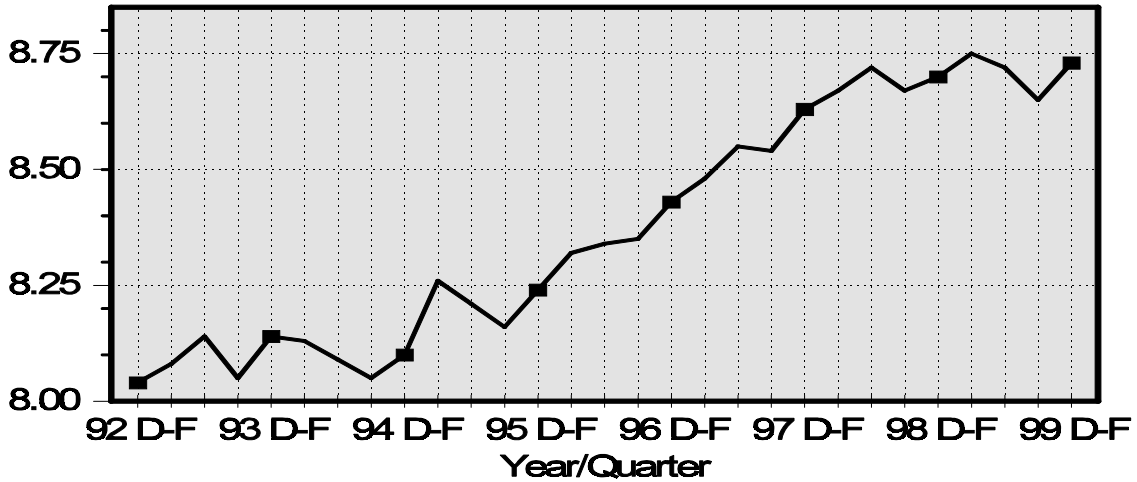
Acting Secretary of  
Agriculture  
Michael V. Dunn



Agricultural Statistics Board  
Chairperson  
Rich Allen

## Litter Rate United States

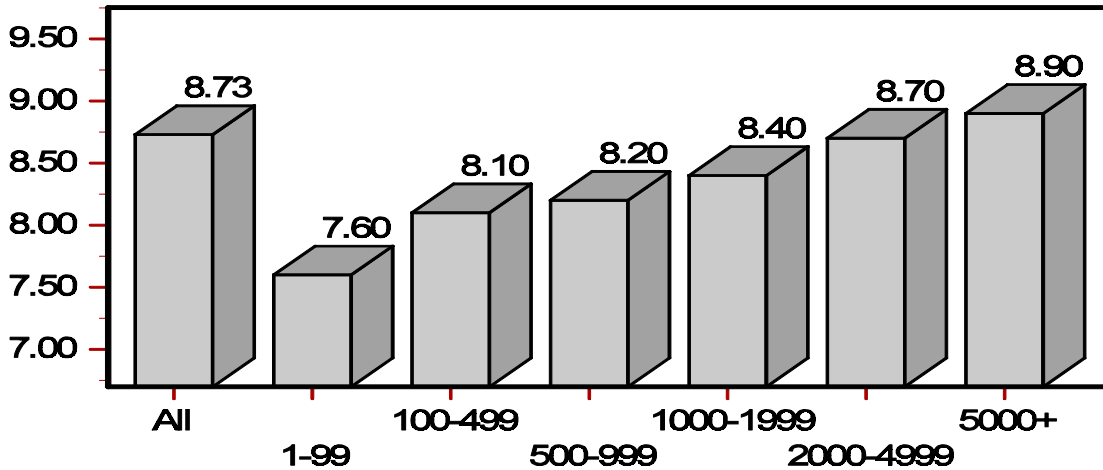
Number Head



## U.S. Pigs per Litter

By Size of Operation, December 98 - February 1999

Number Head



**Hogs and Pigs: Inventory Number by Class, Weight Group,  
and Quarter, United States, 1997-99 <sup>1</sup>**

Item	1997	1998	1999	1999 as % of	
				1997	1998
	<i>1,000 Head</i>	<i>1,000 Head</i>	<i>1,000 Head</i>	<i>Percent</i>	<i>Percent</i>
March 1 Inventory					
All Hogs and Pigs	55,049	60,163	59,851	109	99
Kept for Breeding	6,637	6,942	6,527	98	94
Market	48,412	53,220	53,323	110	100
Market Hogs and Pigs by Weight Groups					
Under 60 Pounds	18,490	20,192	19,804	107	98
60-119 Pounds	11,627	12,791	12,764	110	100
120-179 Pounds	9,858	10,774	10,970	111	102
180 Pounds and Over	8,437	9,464	9,786	116	103
June 1 Inventory					
All Hogs and Pigs	57,366	62,213			
Kept for Breeding	6,789	6,958			
Market	50,577	55,254			
Market Hogs and Pigs by Weight Groups					
Under 60 Pounds	19,988	21,482			
60-119 Pounds	12,574	13,711			
120-179 Pounds	10,002	11,084			
180 Pounds and Over	8,013	8,978			
September 1 Inventory					
All Hogs and Pigs	60,456	63,488			
Kept for Breeding	6,858	6,875			
Market	53,598	56,612			
Market Hogs and Pigs by Weight Groups					
Under 60 Pounds	20,662	21,189			
60-119 Pounds	13,388	14,032			
120-179 Pounds	10,673	11,555			
180 Pounds and Over	8,875	9,837			
December 1 Inventory					
All Hogs and Pigs	61,158	62,206			
Kept for Breeding	6,957	6,682			
Market	54,200	55,523			
Market Hogs and Pigs by Weight Groups					
Under 60 Pounds	20,237	20,140			
60-119 Pounds	13,319	13,631			
120-179 Pounds	11,188	11,585			
180 Pounds and Over	9,457	10,168			

<sup>1</sup> May not add due to rounding.

**Farrowings: Number of Sows, Pig Crop and Pigs Per Litter,  
United States, 1997-99 <sup>1</sup>**

Item	1997	1998	1999	1999 as % of	
				1997	1998
	<i>1,000 Head</i>	<i>1,000 Head</i>	<i>1,000 Head</i>	<i>Percent</i>	<i>Percent</i>
Sows Farrowing					
Dec-Feb <sup>2</sup>	2,684	2,929	2,892	108	99
Mar-May <sup>3</sup>	2,911	3,086	2,879	99	93
Dec-May <sup>2 4</sup>	5,595	6,014	5,771	103	96
Jun-Aug <sup>3</sup>	2,946	3,054	2,841	96	93
Sep-Nov	2,939	2,993			
Jun-Nov	5,884	6,047			
Pig Crop					
Dec-Feb <sup>2</sup>	23,164	25,480	25,250	109	99
Mar-May	25,229	26,989			
Dec-May <sup>2</sup>	48,394	52,469			
Jun-Aug	25,696	26,634			
Sep-Nov	25,494	25,902			
Jun-Nov	51,190	52,535			
	<i>Number</i>	<i>Number</i>	<i>Number</i>	<i>Percent</i>	<i>Percent</i>
Pigs per Litter					
Dec-Feb <sup>2</sup>	8.63	8.70	8.73	101	100
Mar-May	8.67	8.75			
Dec-May <sup>2</sup>	8.65	8.72			
Jun-Aug	8.72	8.72			
Sep-Nov	8.67	8.65			
Jun-Nov	8.70	8.69			

<sup>1</sup> May not add due to rounding.

<sup>2</sup> December preceding year.

<sup>3</sup> Intentions for 1999.

<sup>4</sup> Actual farrowings for December-February 1999 plus intentions for March-May 1999.

**Pigs per Litter: By Size of Operation, United States, 1998-99**

Pig Crop	Pigs per Litter on Operations Having					
	1-99 Head	100-499 Head	500-999 Head	1,000-1,999 Head	2,000-4,999 Head	5,000+ Head
	<i>Number</i>	<i>Number</i>	<i>Number</i>	<i>Number</i>	<i>Number</i>	<i>Number</i>
1998						
Dec-Feb <sup>1</sup>	7.10	7.90	8.30	8.50	8.80	8.90
Mar-May	7.40	8.10	8.40	8.50	8.80	9.00
Jun-Aug	7.30	8.10	8.40	8.60	8.80	8.90
Sep-Nov	7.70	8.00	8.20	8.50	8.70	8.90
1999						
Dec-Feb <sup>1</sup>	7.60	8.10	8.20	8.40	8.70	8.90

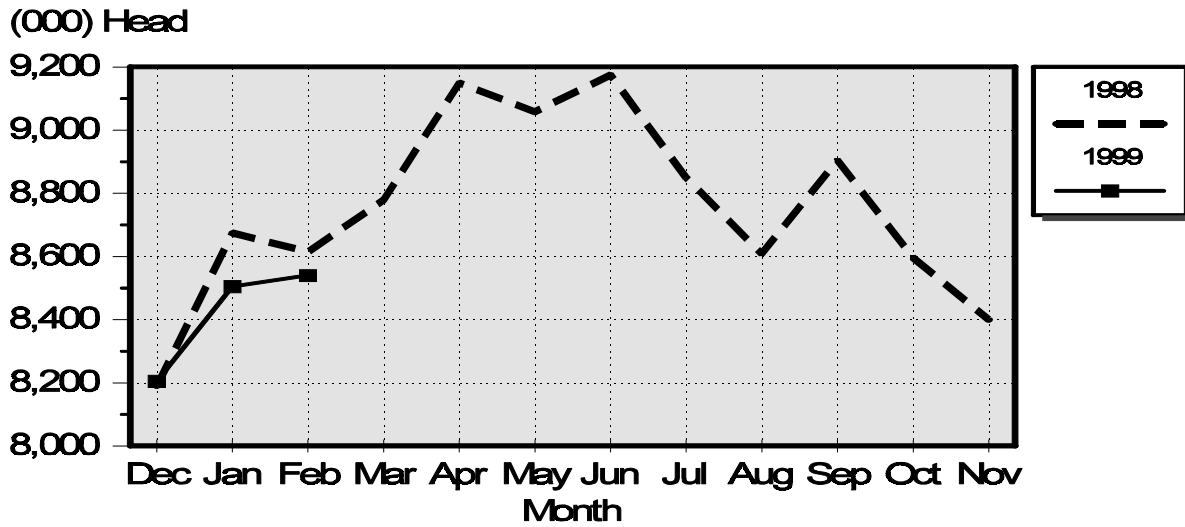
<sup>1</sup> December preceding year.

**Monthly Farrowings: Number of Sows, Pigs per Litter, and Pig Crop,  
United States December-November 1998-99 <sup>1</sup>**

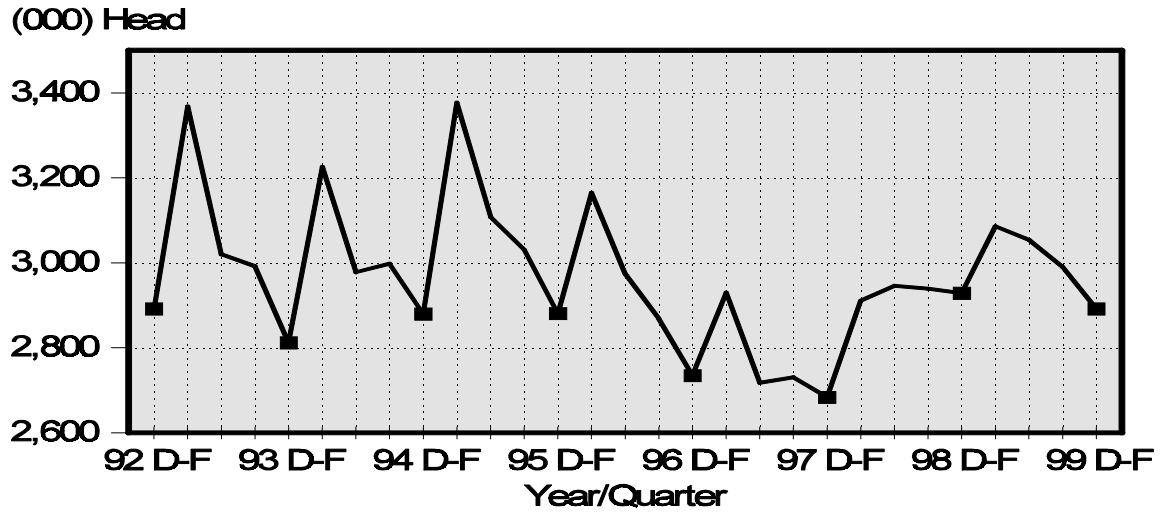
Month	Sows Farrowing		Pigs per Litter		Pig Crop	
	1998	1999	1998	1999	1998	1999
	<i>1,000 Head</i>	<i>1,000 Head</i>	<i>Number</i>	<i>Number</i>	<i>1,000 Head</i>	<i>1,000 Head</i>
Dec <sup>1</sup>	940	940	8.71	8.73	8,190	8,205
Jan	995	975	8.72	8.72	8,675	8,505
Feb	994	977	8.67	8.74	8,615	8,540
Mar	1,010		8.69		8,780	
Apr	1,040		8.80		9,150	
May	1,036		8.74		9,059	
Jun	1,050		8.74		9,175	
Jul	1,014		8.73		8,850	
Aug	990		8.70		8,609	
Sep	1,023		8.70		8,905	
Oct	1,000		8.60		8,597	
Nov	970		8.66		8,400	
Total	12,062		8.71		105,005	

<sup>1</sup> December preceding year.

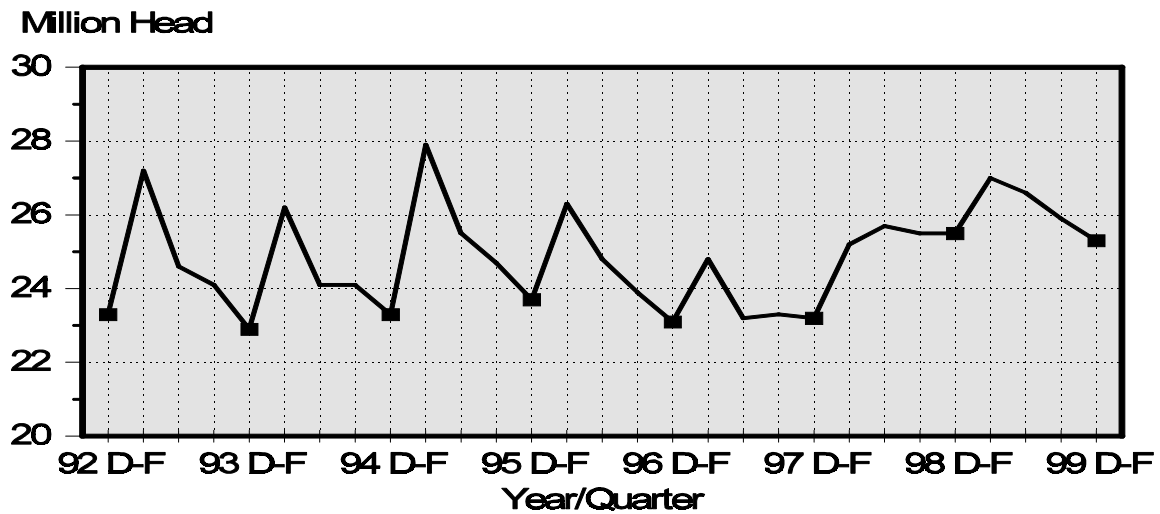
**Monthly Pig Crop  
United States**



## U.S. December-February Sows United States



## Pig Crop United States



**Hogs and Pigs: Breeding, Market, and Total Inventory  
by State and United States, March 1, 1998-99 <sup>1</sup>**

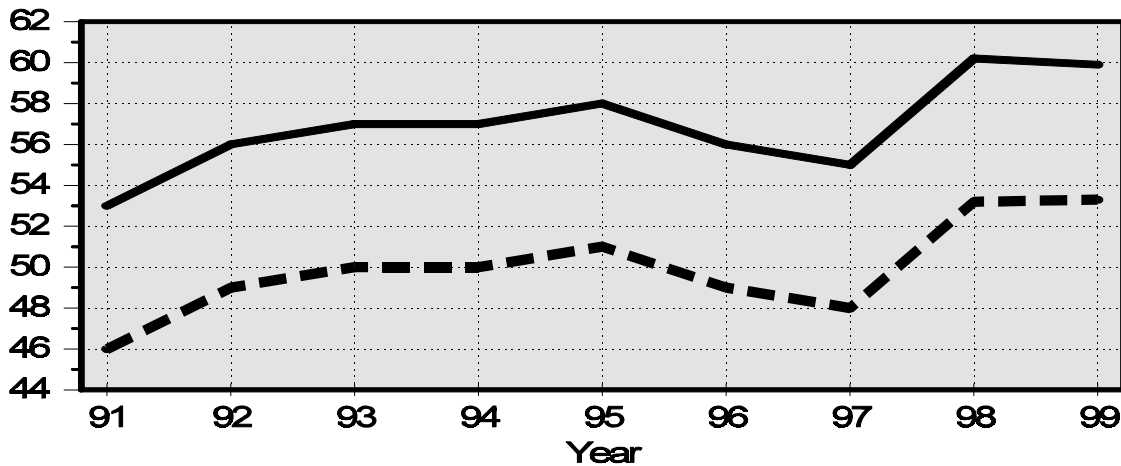
State	Breeding			Market			Total		
	1998	1999		1998	1999		1998	1999	
		Number	as % of 1998		Number	as % of 1998		Number	as % of 1998
	<i>1,000 Head</i>	<i>1,000 Head</i>	<i>Percent</i>	<i>1,000 Head</i>	<i>1,000 Head</i>	<i>Percent</i>	<i>1,000 Head</i>	<i>1,000 Head</i>	<i>Percent</i>
AR	110	110	100	700	625	89	810	735	91
GA	70	70	100	420	420	100	490	490	100
IL	550	470	85	4,150	3,880	93	4,700	4,350	93
IN	470	420	89	3,580	3,380	94	4,050	3,800	94
IA	1,300	1,220	94	12,800	13,380	105	14,100	14,600	104
KS	195	165	85	1,305	1,365	105	1,500	1,530	102
KY	70	65	93	490	405	83	560	470	84
MI	130	110	85	870	880	101	1,000	990	99
MN	630	590	94	5,070	5,010	99	5,700	5,600	98
MO	440	400	91	2,960	2,650	90	3,400	3,050	90
NE	430	420	98	3,020	2,880	95	3,450	3,300	96
NC	1,050	1,000	95	8,450	8,500	101	9,500	9,500	100
OH	210	195	93	1,440	1,455	101	1,650	1,650	100
OK	260	290	112	1,510	1,750	116	1,770	2,040	115
PA	120	120	100	980	980	100	1,100	1,100	100
SD	150	130	87	1,100	1,190	108	1,250	1,320	106
WI	105	85	81	625	585	94	730	670	92
Oth Sts <sup>2</sup>	652	667	102	3,750	3,988	106	4,403	4,656	106
US	6,942	6,527	94	53,220	53,323	100	60,163	59,851	99

<sup>1</sup> May not add due to rounding.

<sup>2</sup> Individual State estimates not available for the 33 other States.

**March 1 Hog Inventory & Market Hogs  
United States**

Million Head





**Market Hogs and Pigs: Inventory Number by Weight Group,  
State, and United States, March 1, 1998-99<sup>1</sup>**

State	Under 60 Lbs.		60-119 Lbs.		120-179 Lbs.		180 Lbs. and Over	
	1998	1999	1998	1999	1998	1999	1998	1999
	<i>1,000 Head</i>	<i>1,000 Head</i>	<i>1,000 Head</i>	<i>1,000 Head</i>	<i>1,000 Head</i>	<i>1,000 Head</i>	<i>1,000 Head</i>	<i>1,000 Head</i>
AR	220	220	175	155	155	135	150	115
GA	170	170	105	105	85	80	60	65
IL	1,510	1,380	980	890	930	870	730	740
IN	1,370	1,290	900	800	700	690	610	600
IA	4,200	4,300	3,400	3,380	2,750	2,950	2,450	2,750
KS	540	515	250	280	235	255	280	315
KY	200	170	115	100	100	75	75	60
MI	290	280	220	225	195	190	165	185
MN	1,960	1,960	1,240	1,230	1,020	990	850	830
MO	1,370	1,170	640	650	540	500	410	330
NE	1,220	1,140	750	750	570	550	480	440
NC	3,350	3,400	1,930	1,950	1,670	1,750	1,500	1,400
OH	640	580	310	355	300	310	190	210
OK	610	700	260	330	210	270	430	450
PA	355	340	260	250	220	210	145	180
SD	390	410	280	310	240	240	190	230
WI	250	210	145	135	120	130	110	110
Oth Sts <sup>2</sup>	1,547	1,569	831	869	734	775	639	776
US	20,192	19,804	12,791	12,764	10,774	10,970	9,464	9,786

<sup>1</sup> Weight groups may not add to Market due to rounding.

<sup>2</sup> Individual State estimates not available for the 33 other States.

**Hogs and Pigs: Breeding, Market, and Total Inventory  
by State and United States, June 1, 1997-98 <sup>1</sup>**

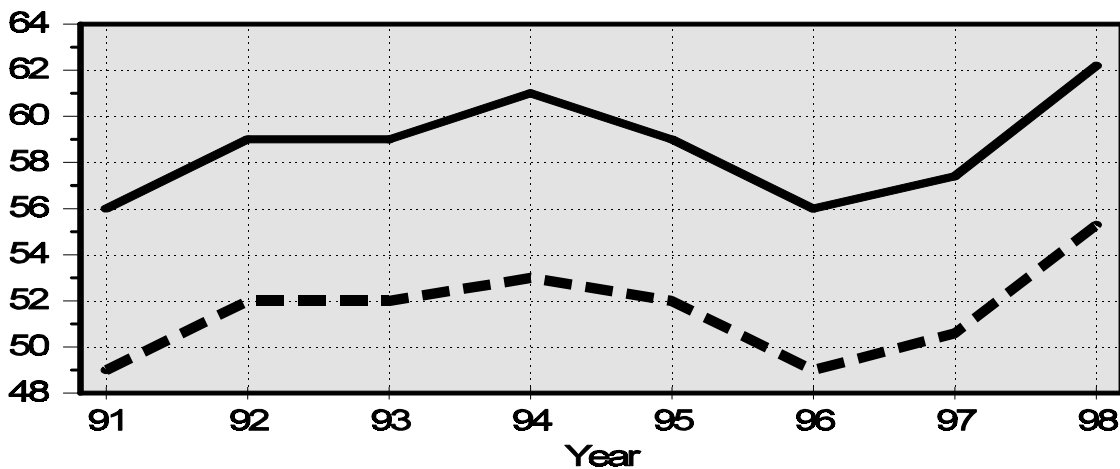
State	Breeding			Market			Total		
	1997	1998		1997	1998		1997	1998	
		Number	as % of 1997		Number	as % of 1997		Number	as % of 1997
	<i>1,000 Head</i>	<i>1,000 Head</i>	<i>Percent</i>	<i>1,000 Head</i>	<i>1,000 Head</i>	<i>Percent</i>	<i>1,000 Head</i>	<i>1,000 Head</i>	<i>Percent</i>
AR	115	110	96	775	680	88	890	790	89
GA	75	70	93	515	430	83	590	500	85
IL	550	580	105	3,900	4,420	113	4,450	5,000	112
IN	440	470	107	3,110	3,730	120	3,550	4,200	118
IA	1,270	1,300	102	11,230	13,500	120	12,500	14,800	118
KS	195	190	97	1,285	1,280	100	1,480	1,470	99
KY	70	65	93	500	455	91	570	520	91
MI	130	130	100	890	1,000	112	1,020	1,130	111
MN	620	640	103	4,780	5,260	110	5,400	5,900	109
MO	455	410	90	3,045	2,890	95	3,500	3,300	94
NE	445	430	97	3,155	3,020	96	3,600	3,450	96
NC	1,000	1,050	105	8,700	8,750	101	9,700	9,800	101
OH	200	220	110	1,300	1,480	114	1,500	1,700	113
OK	210	260	124	1,290	1,610	125	1,500	1,870	125
PA	115	120	104	905	980	108	1,020	1,100	108
SD	165	140	85	1,005	1,210	120	1,170	1,350	115
WI	130	100	77	640	620	97	770	720	94
Oth Sts <sup>2</sup>	604	673	112	3,552	3,939	111	4,156	4,613	111
US	6,789	6,958	102	50,577	55,254	109	57,366	62,213	108

<sup>1</sup> May not add due to rounding.

<sup>2</sup> Individual State estimates not available for the 33 other States.

**June 1 Hog Inventory & Market Hogs  
United States**

Million Head



**Market Hogs and Pigs: Inventory Number by Weight Group,  
State, and United States, June 1, 1997-98 <sup>1</sup>**

State	Under 60 Lbs.		60-119 Lbs.		120-179 Lbs.		180 Lbs. and Over	
	1997	1998	1997	1998	1997	1998	1997	1998
	<i>1,000 Head</i>	<i>1,000 Head</i>	<i>1,000 Head</i>	<i>1,000 Head</i>	<i>1,000 Head</i>	<i>1,000 Head</i>	<i>1,000 Head</i>	<i>1,000 Head</i>
AR	240	250	180	165	205	145	150	120
GA	200	165	130	120	110	90	75	55
IL	1,570	1,750	970	1,080	780	900	580	690
IN	1,140	1,380	770	980	640	780	560	590
IA	4,290	4,630	3,100	3,710	2,170	2,860	1,670	2,300
KS	545	525	285	285	230	240	225	230
KY	195	185	120	110	105	90	80	70
MI	400	450	185	220	180	190	125	140
MN	1,850	2,050	1,210	1,330	990	1,050	730	830
MO	1,430	1,450	665	590	550	510	400	340
NE	1,320	1,240	800	790	570	560	465	430
NC	3,350	3,450	2,170	2,130	1,830	1,770	1,350	1,400
OH	600	660	320	350	240	290	140	180
OK	470	610	210	300	200	220	410	480
PA	330	355	230	260	195	215	150	150
SD	420	455	250	295	180	255	155	205
WI	280	245	135	160	115	120	110	95
Oth Sts <sup>2</sup>	1,358	1,632	844	836	712	799	638	673
US	19,988	21,482	12,574	13,711	10,002	11,084	8,013	8,978

<sup>1</sup> Weight groups may not add to Market due to rounding.

<sup>2</sup> Individual State estimates not available for the 33 other States.

**Hogs and Pigs: Breeding, Market, and Total Inventory  
by State and United States, September 1, 1997-98 <sup>1</sup>**

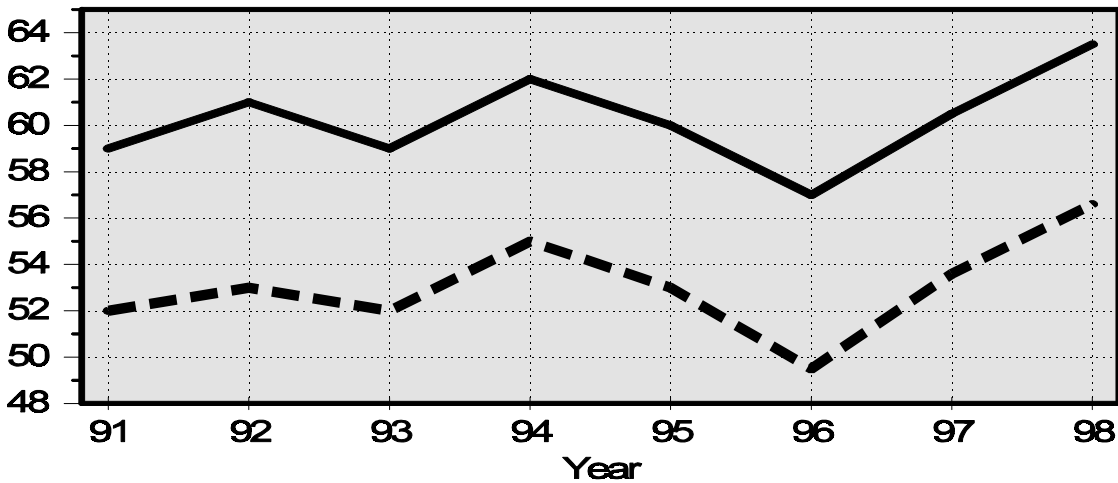
State	Breeding			Market			Total		
	1997	1998		1997	1998		1997	1998	
		Number	as % of 1997		Number	as % of 1997		Number	as % of 1997
	<i>1,000 Head</i>	<i>1,000 Head</i>	<i>Percent</i>	<i>1,000 Head</i>	<i>1,000 Head</i>	<i>Percent</i>	<i>1,000 Head</i>	<i>1,000 Head</i>	<i>Percent</i>
AR	115	110	96	795	690	87	910	800	88
GA	65	65	100	505	415	82	570	480	84
IL	530	540	102	4,070	4,310	106	4,600	4,850	105
IN	450	450	100	3,400	3,650	107	3,850	4,100	106
IA	1,350	1,290	96	12,750	14,210	111	14,100	15,500	110
KS	205	180	88	1,345	1,370	102	1,550	1,550	100
KY	70	65	93	500	455	91	570	520	91
MI	130	120	92	970	950	98	1,100	1,070	97
MN	630	650	103	4,970	5,350	108	5,600	6,000	107
MO	435	420	97	3,115	2,930	94	3,550	3,350	94
NE	435	420	97	3,115	2,980	96	3,550	3,400	96
NC	1,000	1,050	105	8,900	9,250	104	9,900	10,300	104
OH	200	210	105	1,350	1,540	114	1,550	1,750	113
OK	215	290	135	1,385	1,690	122	1,600	1,980	124
PA	120	115	96	980	985	101	1,100	1,100	100
SD	160	130	81	1,060	1,170	110	1,220	1,300	107
WI	135	95	70	665	605	91	800	700	88
Oth Sts <sup>2</sup>	613	675	110	3,723	4,062	109	4,336	4,738	109
US	6,858	6,875	100	53,598	56,612	106	60,456	63,488	105

<sup>1</sup> May not add due to rounding.

<sup>2</sup> Individual State estimates not available for the 33 other States.

**September 1 Hog Inventory & Market Hogs  
United States**

Million Head



**Market Hogs and Pigs: Inventory Number by Weight Group,  
State, and United States, September 1, 1997-98 <sup>1</sup>**

State	Under 60 Lbs.		60-119 Lbs.		120-179 Lbs.		180 Lbs. and Over	
	1997	1998	1997	1998	1997	1998	1997	1998
	<i>1,000 Head</i>	<i>1,000 Head</i>	<i>1,000 Head</i>	<i>1,000 Head</i>	<i>1,000 Head</i>	<i>1,000 Head</i>	<i>1,000 Head</i>	<i>1,000 Head</i>
AR	265	230	190	180	195	150	145	130
GA	195	165	130	105	110	85	70	60
IL	1,540	1,540	970	1,050	820	930	740	790
IN	1,250	1,330	860	880	680	790	610	650
IA	4,300	4,560	3,650	4,050	2,650	3,000	2,150	2,600
KS	590	575	265	290	255	235	235	270
KY	195	185	120	110	105	90	80	70
MI	340	300	260	250	200	195	170	205
MN	2,020	2,110	1,250	1,380	940	1,060	760	800
MO	1,440	1,300	670	680	520	550	485	400
NE	1,350	1,300	760	720	580	540	425	420
NC	3,500	3,620	2,160	2,120	1,850	1,920	1,390	1,590
OH	610	680	330	360	250	310	160	190
OK	490	650	250	300	230	270	415	470
PA	370	350	260	255	205	215	145	165
SD	430	380	260	280	200	290	170	220
WI	280	240	150	140	125	120	110	105
Oth Sts <sup>2</sup>	1,497	1,674	853	882	758	805	615	702
US	20,662	21,189	13,388	14,032	10,673	11,555	8,875	9,837

<sup>1</sup> Weight groups may not add to Market due to rounding.

<sup>2</sup> Individual State estimates not available for the 33 other States.

**Hogs and Pigs: Breeding, Market, and Total Inventory  
by State and United States, December 1, 1997-98 <sup>1</sup>**

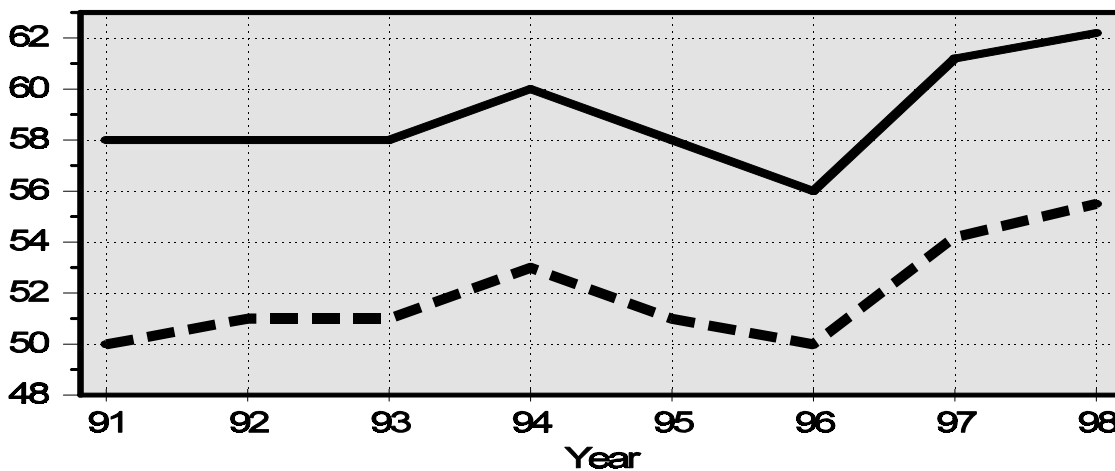
State	Breeding			Market			Total		
	1997	1998		1997	1998		1997	1998	
		Number	as % of 1997		Number	as % of 1997		Number	as % of 1997
	<i>1,000 Head</i>	<i>1,000 Head</i>	<i>Percent</i>	<i>1,000 Head</i>	<i>1,000 Head</i>	<i>Percent</i>	<i>1,000 Head</i>	<i>1,000 Head</i>	<i>Percent</i>
AR	110	110	100	750	640	85	860	750	87
GA	70	70	100	450	410	91	520	480	92
IL	550	530	96	4,150	4,320	104	4,700	4,850	103
IN	460	450	98	3,490	3,600	103	3,950	4,050	103
IA	1,360	1,260	93	13,240	14,040	106	14,600	15,300	105
KS	200	170	85	1,330	1,420	107	1,530	1,590	104
KY	70	65	93	500	455	91	570	520	91
MI	130	120	92	900	1,000	111	1,030	1,120	109
MN	650	620	95	5,050	5,080	101	5,700	5,700	100
MO	440	400	91	3,110	2,900	93	3,550	3,300	93
NE	440	420	95	3,060	2,980	97	3,500	3,400	97
NC	1,000	1,000	100	8,600	8,700	101	9,600	9,700	101
OH	210	200	95	1,490	1,500	101	1,700	1,700	100
OK	240	280	117	1,410	1,640	116	1,650	1,920	116
PA	120	120	100	980	980	100	1,100	1,100	100
SD	160	130	81	1,240	1,270	102	1,400	1,400	100
WI	105	85	81	635	605	95	740	690	93
Oth Sts <sup>2</sup>	642	652	102	3,815	3,983	104	4,458	4,636	104
US	6,957	6,682	96	54,200	55,523	102	61,158	62,206	102

<sup>1</sup> May not add due to rounding.

<sup>2</sup> Individual State estimates not available for the 33 other States.

**December 1 Hog Inventory & Market Hogs  
United States**

Million Head



**Market Hogs and Pigs: Inventory Number by Weight Group,  
State, and United States, December 1, 1997-98 <sup>1</sup>**

State	Under 60 Lbs.		60-119 Lbs.		120-179 Lbs.		180 Lbs. and Over	
	1997	1998	1997	1998	1997	1998	1997	1998
	<i>1,000 Head</i>	<i>1,000 Head</i>	<i>1,000 Head</i>	<i>1,000 Head</i>	<i>1,000 Head</i>	<i>1,000 Head</i>	<i>1,000 Head</i>	<i>1,000 Head</i>
AR	295	200	165	165	155	150	135	125
GA	165	160	130	100	100	80	55	70
IL	1,580	1,550	980	1,050	840	920	750	800
IN	1,230	1,370	880	840	760	780	620	610
IA	4,370	4,400	3,650	3,700	2,780	3,120	2,440	2,820
KS	580	535	260	290	260	280	230	315
KY	200	185	120	110	105	90	75	70
MI	320	340	200	270	205	180	175	210
MN	1,990	2,020	1,270	1,270	990	960	800	830
MO	1,360	1,130	650	770	610	570	490	430
NE	1,180	1,165	800	780	640	600	440	435
NC	3,350	3,400	2,000	2,000	1,840	1,850	1,410	1,450
OH	650	590	340	370	320	330	180	210
OK	480	590	260	320	200	265	470	465
PA	360	340	260	255	210	210	150	175
SD	450	405	330	320	260	280	200	265
WI	240	215	155	130	125	130	115	130
Oth Sts <sup>2</sup>	1,437	1,545	869	891	788	790	722	758
US	20,237	20,140	13,319	13,631	11,188	11,585	9,457	10,168

<sup>1</sup> Weight groups may not add to Market due to rounding.

<sup>2</sup> Individual State estimates not available for the 33 other States.

**Farrowings: Number of Sows, Pigs per Litter, and Pig Crop  
by State and United States, December-February 1998-99<sup>1 2</sup>**

State	Sows Farrowing			Pigs per Litter		Pig Crop <sup>3</sup>		
	1998	1999		1998	1999	1998	1999	
		Number	as % of 1998				Number	as % of 1998
	<i>1,000 Head</i>	<i>1,000 Head</i>	<i>Percent</i>	<i>Number</i>	<i>Number</i>	<i>1,000 Head</i>	<i>1,000 Head</i>	<i>Percent</i>
AR	56	56	100	8.50	8.40	476	470	99
GA	26	28	108	8.35	8.60	217	241	111
IL	225	210	93	8.60	8.70	1,935	1,827	94
IN	195	185	95	8.60	8.60	1,677	1,591	95
IA	520	480	92	8.70	8.70	4,524	4,176	92
KS	90	83	92	9.00	8.70	810	722	89
KY	31	30	97	8.40	8.65	260	260	100
MI	40	37	93	8.80	9.00	352	333	95
MN	260	255	98	8.95	8.95	2,327	2,282	98
MO	195	185	95	8.80	8.60	1,716	1,591	93
NE	165	165	100	8.50	8.55	1,403	1,411	101
NC	515	530	103	8.90	8.85	4,584	4,691	102
OH	89	86	97	8.50	8.50	757	731	97
OK	117	150	128	8.90	9.20	1,041	1,380	133
PA	47	47	100	8.60	8.70	404	409	101
SD	58	50	86	8.60	8.90	499	445	89
WI	42	37	88	8.20	8.35	344	309	90
Oth Sts <sup>4</sup>	258	278	108	8.35	8.56	2,154	2,381	111
US	2,929	2,892	99	8.70	8.73	25,480	25,250	99

<sup>1</sup> May not add due to rounding.

<sup>2</sup> December preceding year.

<sup>3</sup> Number of pigs born December-February on hand March 1, or had been sold.

<sup>4</sup> Individual State estimates not available for the 33 States.



**Farrowings: Number of Sows, Pigs per Litter, and Pig Crop  
by State and United States, March-May 1997-99<sup>1</sup>**

State	Sows Farrowing				Pigs per Litter		Pig Crop <sup>2</sup>		
	1997	1998	1999 <sup>3</sup>		1997	1998	1997	1998	
			Number	as % of 1998				Number	as % of 1997
	<i>1,000 Head</i>	<i>1,000 Head</i>	<i>1,000 Head</i>	<i>Percent</i>	<i>Number</i>	<i>Number</i>	<i>1,000 Head</i>	<i>1,000 Head</i>	<i>1,000 Head</i>
AR	60	56	54	96	8.30	8.40	498	470	94
GA	30	25	28	112	8.35	8.40	251	210	84
IL	240	255	210	82	8.40	8.60	2,016	2,193	109
IN	180	195	175	90	8.40	8.70	1,512	1,697	112
IA	510	550	480	87	8.60	8.70	4,386	4,785	109
KS	90	90	80	89	9.20	8.90	828	801	97
KY	31	30	30	100	8.50	8.40	264	252	95
MI	55	53	53	100	8.40	8.90	462	472	102
MN	255	275	255	93	8.85	8.90	2,257	2,448	108
MO	200	195	180	92	8.90	8.90	1,780	1,736	98
NE	170	170	170	100	8.50	8.40	1,445	1,428	99
NC	515	540	530	98	8.90	8.90	4,584	4,806	105
OH	85	90	84	93	8.40	8.70	714	783	110
OK	87	129	140	109	9.50	9.10	827	1,174	142
PA	48	48	47	98	8.60	8.70	413	418	101
SD	70	65	60	92	8.40	8.70	588	566	96
WI	47	43	33	77	8.50	8.50	400	366	92
Oth Sts <sup>4</sup>	238	277	270	98	8.42	8.61	2,004	2,384	119
US	2,911	3,086	2,879	93	8.67	8.75	25,229	26,989	107

<sup>1</sup> May not add due to rounding.

<sup>2</sup> Number of pigs born March-May that were still on hand June 1, or had been sold.

<sup>3</sup> Intentions.

<sup>4</sup> Individual State estimates not available for the 33 other States.

**Farrowings: Number of Sows, Pigs per Litter, and Pig Crop  
by State and United States, June-August 1997-99 <sup>1</sup>**

State	Sows Farrowing				Pigs per Litter		Pig Crop <sup>2</sup>		
	1997	1998	1999 <sup>3</sup>		1997	1998	1997	1998	
			Number	as % of 1998				Number	as % of 1997
	<i>1,000 Head</i>	<i>1,000 Head</i>	<i>1,000 Head</i>	<i>Percent</i>	<i>Number</i>	<i>Number</i>	<i>1,000 Head</i>	<i>1,000 Head</i>	<i>Percent</i>
AR	58	57	53	93	8.60	8.50	499	485	97
GA	29	25	29	116	8.40	8.45	244	211	86
IL	220	230	200	87	8.40	8.60	1,848	1,978	107
IN	190	190	175	92	8.40	8.65	1,596	1,644	103
IA	540	530	470	89	8.80	8.75	4,752	4,638	98
KS	95	92	80	87	9.20	8.70	874	800	92
KY	31	29	30	103	8.35	8.40	259	244	94
MI	54	52	42	81	8.70	8.90	470	463	99
MN	260	280	255	91	8.85	8.90	2,301	2,492	108
MO	195	195	180	92	8.90	8.70	1,736	1,697	98
NE	165	170	170	100	8.55	8.60	1,411	1,462	104
NC	515	550	530	96	8.90	8.80	4,584	4,840	106
OH	90	90	83	92	8.30	8.75	747	788	105
OK	98	134	140	104	9.40	9.10	921	1,219	132
PA	49	48	47	98	8.70	8.70	426	418	98
SD	68	57	50	88	8.50	8.70	578	496	86
WI	48	42	33	79	8.50	8.35	408	351	86
Oth Sts <sup>4</sup>	241	283	274	97	8.47	8.51	2,042	2,408	118
US	2,946	3,054	2,841	93	8.72	8.72	25,696	26,634	104

<sup>1</sup> May not add due to rounding.

<sup>2</sup> Number of pigs born June-August on hand September 1, or had been sold.

<sup>3</sup> Intentions.

<sup>4</sup> Individual State estimates not available for the 33 States.

**Farrowings: Number of Sows, Pigs per Litter, and Pig Crop  
by State and United States, September-November 1997-98 <sup>1</sup>**

State	Sows Farrowing			Pigs per Litter		Pig Crop <sup>2</sup>		
	1997	1998		1997	1998	1997	1998	
		Number	as % of 1997				Number	as % of 1997
	<i>1,000 Head</i>	<i>1,000 Head</i>	<i>Percent</i>	<i>Number</i>	<i>Number</i>	<i>1,000 Head</i>	<i>1,000 Head</i>	<i>Percent</i>
AR	55	56	102	8.40	8.50	462	476	103
GA	25	28	112	8.35	8.30	209	232	111
IL	240	235	98	8.40	8.60	2,016	2,021	100
IN	190	195	103	8.50	8.65	1,615	1,687	104
IA	520	510	98	8.60	8.70	4,472	4,437	99
KS	95	90	95	9.20	8.70	874	783	90
KY	31	30	97	8.35	8.50	259	255	98
MI	48	52	108	8.70	8.50	418	442	106
MN	260	265	102	8.90	8.85	2,314	2,345	101
MO	200	190	95	8.90	8.60	1,780	1,634	92
NE	165	175	106	8.50	8.50	1,403	1,488	106
NC	510	520	102	8.85	8.65	4,514	4,498	100
OH	90	90	100	8.60	8.60	774	774	100
OK	99	135	136	9.30	9.10	921	1,229	133
PA	48	46	96	8.70	8.90	418	409	98
SD	70	60	86	8.60	8.60	602	516	86
WI	43	39	91	8.30	8.25	357	322	90
Oth Sts <sup>3</sup>	250	277	111	8.34	8.50	2,086	2,354	113
US	2,939	2,993	102	8.67	8.65	25,494	25,902	102

<sup>1</sup> May not add due to rounding.

<sup>2</sup> Number of pigs born September-November that were still on hand December 1 or had been sold.

<sup>3</sup> Individual State estimates not available for the 33 other States.

## Reliability of March 1 Hogs and Pigs Estimates

**Survey Procedures:** A random sample of about 13,500 U.S. producers was surveyed to provide data for these estimates. Survey procedures ensured that all hog and pig producers, regardless of size, had a chance to be included in the survey. Large producers were sampled more heavily than small operations. Data were collected from about 11,500 operations, 85 percent of the total sample, during the first-half of March by mail, telephone, and face-to-face personal interviews. Regardless of when operations responded, they were asked to report inventories as of March 1.

**Estimation Procedures:** These hogs and pigs estimates were prepared by the Agricultural Statistics Board after reviewing recommendations and analysis submitted by each State office. National and State survey data were reviewed for reasonableness with each other and with estimates from past years using a balance sheet. The balance sheet begins with the previous inventory estimate, adds to it estimates of births and imports, and subtracts estimates of slaughter, exports, and deaths. This indicated ending inventory level is compared to the Agricultural Statistics Board estimate for reasonableness.

**Revision Policy:** Revisions to previous estimates are made to improve quarter to quarter relationships. Estimates for the previous four quarters are subject to revision when current estimates are made. In December, estimates for all quarters of the current and previous year are reviewed. The reviews are primarily based on hog check-off receipts and slaughter. Estimates will also be reviewed after data from the Department of Agriculture's five-year Census of Agriculture are available. No revisions will be made after that date.

**Reliability:** Since all operations raising hogs are not included in the sample, survey estimates are subject to sampling variability. Survey results are also subject to non-sampling errors such as omissions, duplication, and mistakes in reporting, recording, and processing the data. The affects of these errors cannot be measured directly. They are minimized through rigid quality controls in the data collection process and through a careful review of all reported data for consistency and reasonableness.

To assist users in evaluating the reliability of the estimates in this report, the "Root Mean Square Error" is shown for selected items in the following table. The "**Root Mean Square Error**" is a statistical measure based on past performance and is computed using the difference between first and final estimates. The "Root Mean Square Error" for hog inventory estimates over the past 20 quarters is 2.0 percent. This means that chances are 2 out of 3 that the final estimate will not be above or below the current estimate of 59.9 million head by more than 2.0 percent, or about 1,197,000 head. Chances are 9 out of 10 that the difference will not exceed 3.5 percent, or about 2,095,000 head (the 90 percent confidence level).

**Reliability of March 1 Hog Estimates <sup>1</sup>**

Item	Root Mean Square Error	90% Confidence Level		Difference Between First and Latest Estimates			Quarters	
				Average	Smallest	Largest	First Above Latest	First Below Latest
	<i>Percent</i>	<i>Percent</i>	<i>1,000 Head</i>	<i>1,000 Head</i>	<i>1,000 Head</i>	<i>1,000 Head</i>	<i>Number</i>	<i>Number</i>
All Hogs & Pigs	2.0	3.5	2,095	883	47	2,820	10	10
Pig Crop	2.1	3.6	909	410	6	1,009	7	13
Expected Farrowings								
Next Quarter	2.8	4.9	141	63	1	225	11	9
Following	5.1	8.8	250	110	17	380	12	8

<sup>1</sup> Based on quarterly records for the past 20 quarters.

## Index

## Page

Farrowings, Number of Sows, Pigs Per Litter, and Pig Crop, September-November, Quarterly States .....	19
Farrowings, Number of Sows, Pigs Per Litter, and Pig Crop, March-May, Quarterly States .....	17
Farrowings, Number of Sows, Pig Crop, and Pigs Per Litter, US .....	5
Farrowings, Number of Sows, Pigs Per Litter, and Pig Crop, December-February, Quarterly States .....	16
Farrowings, Number of Sows, Pigs Per Litter, and Pig Crop, June-August, Quarterly States .....	18
Hogs and Pigs Inventory Number, by Quarter, US .....	4
Inventory, Total and Breeding, Market Hogs, and Market Hogs, by Weight Groups, Quarterly States, September 1 .....	12
Inventory, Total and Breeding, Market Hogs, and Market Hogs, by Weight Groups, Quarterly States, December 1 .....	14
Inventory, Total and Breeding, Market Hogs, and Market Hogs, by Weight Groups, Quarterly States, June 1 .....	10
Inventory, Total and Breeding, Market Hogs, and Market Hogs, by Weight Groups, Quarterly States, March 1 .....	8
Monthly Farrowings, Number of Sows, Pigs per Litter, and Pig Crop, December-November, US .....	6
Pigs per Litter by Size of Operation, US .....	5
Survey and Estimation Procedures, Revision Policy and Reliability .....	20

The next "Hogs and Pigs" report will be released at 3 p.m. ET on June 25, 1999.

The United States Department of Agriculture (USDA) prohibits discrimination in all its programs on the basis of race, color, national origin, gender, religion, age, disability, political beliefs, sexual orientation, and marital or family status. (Not all prohibited bases apply to all programs.) Persons with disabilities who require alternative means for communication of program information (braille, large print, audiotape, etc.) should contact the USDA's TARGET Center at 202-720-2600 (voice and TDD).

To file a complaint of discrimination, write USDA, Director, Office of Civil Rights, Room 326-W, Whitten Building, 14th and Independence Avenue, SW, Washington, D.C., 20250-9410, or call 202-720-5964 (voice or TDD). USDA is an equal opportunity provider and employer.

## **ACCESS TO REPORTS!!**

---

For your convenience, there are several ways to obtain NASS reports, data products, and services:

### **INTERNET ACCESS**

All NASS reports are available free of charge on the worldwide Internet. For access, connect to the Internet and go to the NASS Home Page at: <http://www.usda.gov/nass/>. Select "Today's Reports" or Publications and then Reports by Calendar or Publications and then Search, by Title or Subject.

### **E-MAIL SUBSCRIPTION**

All NASS reports are available by subscription free of charge direct to your e-mail address. Send an e-mail message to: [usda-reports@usda.mannlib.cornell.edu](mailto:usda-reports@usda.mannlib.cornell.edu). In the body of the message type the word: **list**.

### **AUTOFAX ACCESS**

NASSFax service is available for some reports from your fax machine. Please call 202-720-2000, using the handset attached to your fax. Respond to the voice prompts. Document 0411 is a list of available reports.

-----

### **PRINTED REPORTS OR DATA PRODUCTS**

**CALL OUR TOLL-FREE ORDER DESK: 800-999-6779 (U.S. and Canada)**  
Other areas, please call 703-834-0125      FAX: 703-834-0110  
(Visa, MasterCard, check, or money order acceptable for payment.)

-----

### **ASSISTANCE**

For **assistance** with general agricultural statistics or further information about NASS or its products or services, contact the **Agricultural Statistics Hotline** at **800-727-9540**, 7:30 a.m. to 4:00 p.m. ET, or e-mail: [nass@nass.usda.gov](mailto:nass@nass.usda.gov).