

Released May 25, 2001, by the National Agricultural Statistics Service (NASS), Agricultural Statistics Board, U.S. Department of Agriculture. For information on "Monthly Hogs and Pigs" call Rodger Ott at 202-720-3106, office hours 7:00 a.m. to 4:00 p.m. ET.

## April Pig Crop Up 1 Percent

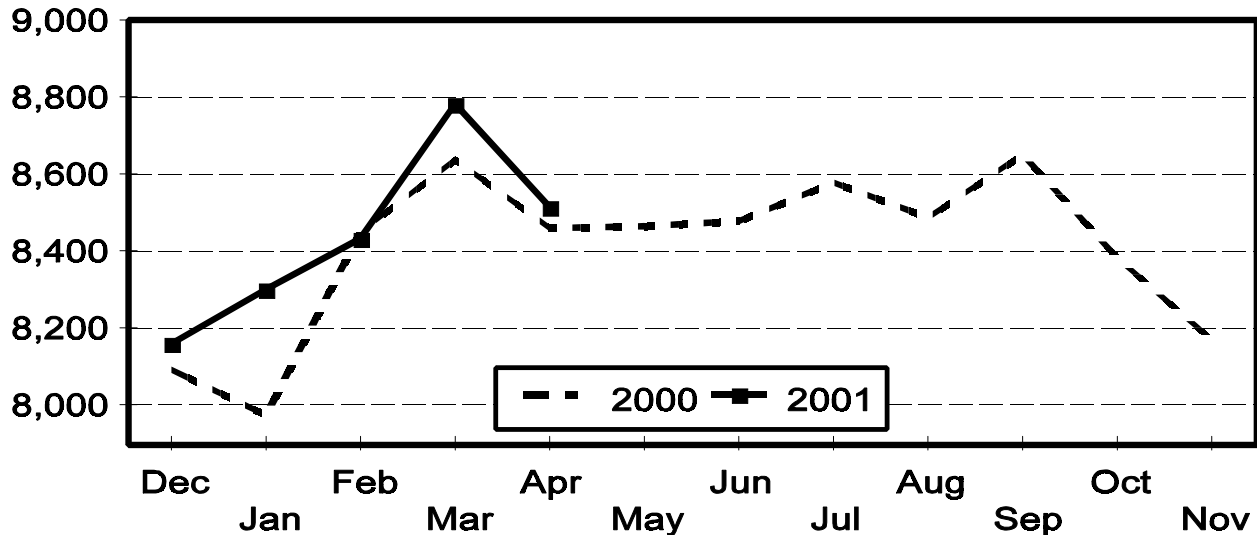
The April 2001 U.S. pig crop at 8.52 million head, was 1 percent more than the previous year. Sows farrowing during this period totaled 953 thousand head, slightly below last year. The average pigs per litter for April rose to 8.94, compared to 8.85 last year.

The U.S. inventory of sows and gilts totaled 5.99 million head on May 1, 2001.

U.S. sows and gilts bred during the month of April totaled 1.17 million head.

## U.S. Monthly Pig Crop

(000) Head



### Special Note

The National Agricultural Statistics Service will publish a special analysis of the changes in the makeup of the hog breeding herd and trends in its efficiency on June 8<sup>th</sup>, 2001 at 3:00 p.m. ET. Included in the report is a comparison of litter rates, pig crop, and pigs per breeding animal by size of operation. The release will only be available on the NASS website at: <http://www.usda.gov/nass/>.

**Monthly Farrowings: Number of Sows, Pigs per Litter, and Pig Crop,  
United States December-November 2000-2001<sup>1 2</sup>**

Month	Sows Farrowing		Pigs per Litter		Pig Crop	
	2000	2001	2000	2001	2000	2001
	<i>1,000 Head</i>	<i>1,000 Head</i>	<i>Number</i>	<i>Number</i>	<i>1,000 Head</i>	<i>1,000 Head</i>
Dec <sup>1</sup>	922	934	8.77	8.74	8,091	8,163
Jan	911	946	8.76	8.77	7,977	8,301
Feb	965	956	8.76	8.82	8,454	8,432
Mar	974	988	8.87	8.89	8,639	8,782
Apr	956	953	8.85	8.94	8,461	8,516
May	955		8.86		8,465	
Jun	960		8.83		8,479	
Jul	970		8.85		8,580	
Aug	959		8.85		8,489	
Sep	979		8.84		8,654	
Oct	947		8.85		8,382	
Nov	922		8.86		8,172	
Total	11,420		8.83		100,843	

<sup>1</sup> December preceding year.

<sup>2</sup> Monthly values may not add to quarterly or annual totals due to rounding.

**Monthly Sows and Gilts: Inventory and Number Bred,  
United States December-November 2000-2001<sup>1 2</sup>**

Month	Inventory 1st of Month			Bred during Month		
	2000	2001		2000	2001	
		Number	as % of 2000		Number	as % of 2000
	<i>1,000 Head</i>	<i>1,000 Head</i>	<i>Percent</i>	<i>1,000 Head</i>	<i>1,000 Head</i>	<i>Percent</i>
Dec <sup>2</sup>		6,090			1,185	
Jan		6,030			1,169	
Feb		6,031			1,142	
Mar		6,065			1,200	
Apr		5,999			1,170	
May		5,986				
Jun						
Jul						
Aug						
Sep				1,234		
Oct	6,072			1,183		
Nov	6,055			1,168		
Total						

<sup>1</sup> Data series beginning October 2000.

<sup>2</sup> December preceding year.

**Survey Procedures:** A random sample of 3,000 U.S. producers from contractors to independent producers were used to provide data for these estimates. Survey procedures ensured that all breeding and farrowing operations, regardless of size, had a chance to be included in the survey. Large producers were sampled more heavily than small operations. Data were collected during the first-half of the month by mail, telephone, and face-to-face personal interviews. Operations were asked to provide information on sow and gilt inventories as of the first of the month, sows and gilts bred during the previous month, sows and gilts farrowed during the previous month, and the pig crop from these litters.

**Revision Policy:** Revisions to previous monthly estimates are made during the quarterly report. These revisions are to improve month to month, and quarter to quarter relationships. In December, estimates for all months and quarters of the current and previous year are reviewed. The reviews are primarily based on hog check-off receipts and slaughter. Estimates will also be reviewed after data from the Department of Agriculture five-year Census of Agriculture are available. No revisions will be made after that date.

**Reliability:** Since all operations with sow and gilt inventory are not included in the sample, survey estimates are subject to sampling variability. Survey results are also subject to non-sampling errors such as omissions, duplication, and mistakes in reporting, recording, and processing the data. The affects of these errors cannot be measured directly. They are minimized through rigid quality controls in the data collection process and through a careful review of all reported data for consistency and reasonableness.

The next "Quarterly Hogs and Pigs" report will be released at 3 p.m. ET on June 29, 2001.

The next "Monthly Hogs and Pigs" report will be released at 3 p.m. ET on July 27, 2001.

The United States Department of Agriculture (USDA) prohibits discrimination in all its programs on the basis of race, color, national origin, gender, religion, age, disability, political beliefs, sexual orientation, and marital or family status. (Not all prohibited bases apply to all programs.) Persons with disabilities who require alternative means for communication of program information (braille, large print, audiotape, etc.) should contact the USDA's TARGET Center at 202-720-2600 (voice and TDD).

To file a complaint of discrimination, write USDA, Director, Office of Civil Rights, Room 326-W, Whitten Building, 1400 Independence Avenue, SW, Washington, D.C., 20250-9410, or call 202-720-5964 (voice or TDD). USDA is an equal opportunity provider and employer.

## **ACCESS TO REPORTS!!**

---

For your convenience, there are several ways to obtain NASS reports, data products, and services:

### **INTERNET ACCESS**

All NASS reports are available free of charge on the worldwide Internet. For access, connect to the Internet and go to the NASS Home Page at: <http://www.usda.gov/nass/>. Select "Today's Reports" or Publications and then Reports by Calendar or Publications and then Search, by Title or Subject.

### **E-MAIL SUBSCRIPTION**

There are two options for subscribing via e-mail. All NASS reports are available by subscription free of charge direct to your e-mail address. 1) Starting with the NASS Home Page at <http://www.usda.gov/nass/>, click on **Publications**, then click on the **Subscribe by E-mail** button which takes you to the page describing e-mail delivery of reports. Finally, click on **Go to the Subscription Page** and follow the instructions. 2) If you do NOT have Internet access, send an e-mail message to: [usda-reports@usda.mannlib.cornell.edu](mailto:usda-reports@usda.mannlib.cornell.edu). In the body of the message type the word: **list**.

### **AUTOFAX ACCESS**

NASSFax service is available for some reports from your fax machine. Please call 202-720-2000, using the handset attached to your fax. Respond to the voice prompts. Document 0411 is a list of available reports.

### **----- PRINTED REPORTS OR DATA PRODUCTS**

**CALL OUR TOLL-FREE ORDER DESK: 800-999-6779 (U.S. and Canada)**  
**Other areas, please call 703-834-0125      FAX: 703-834-0110**  
**(Visa, MasterCard, check, or money order acceptable for payment.)**

-----

### **ASSISTANCE**

For **assistance** with general agricultural statistics or further information about NASS or its products or services, contact the **Agricultural Statistics Hotline** at **800-727-9540**, 7:30 a.m. to 4:00 p.m. ET, or e-mail: [nass@nass.usda.gov](mailto:nass@nass.usda.gov).