

Released September 28, 2001, by the National Agricultural Statistics Service (NASS), Agricultural Statistics Board, U.S. Department of Agriculture. For information on "Quarterly Hogs and Pigs" call Rodger Ott at 202-720-3106, office hours 7:00 a.m. to 4:00 p.m. ET.

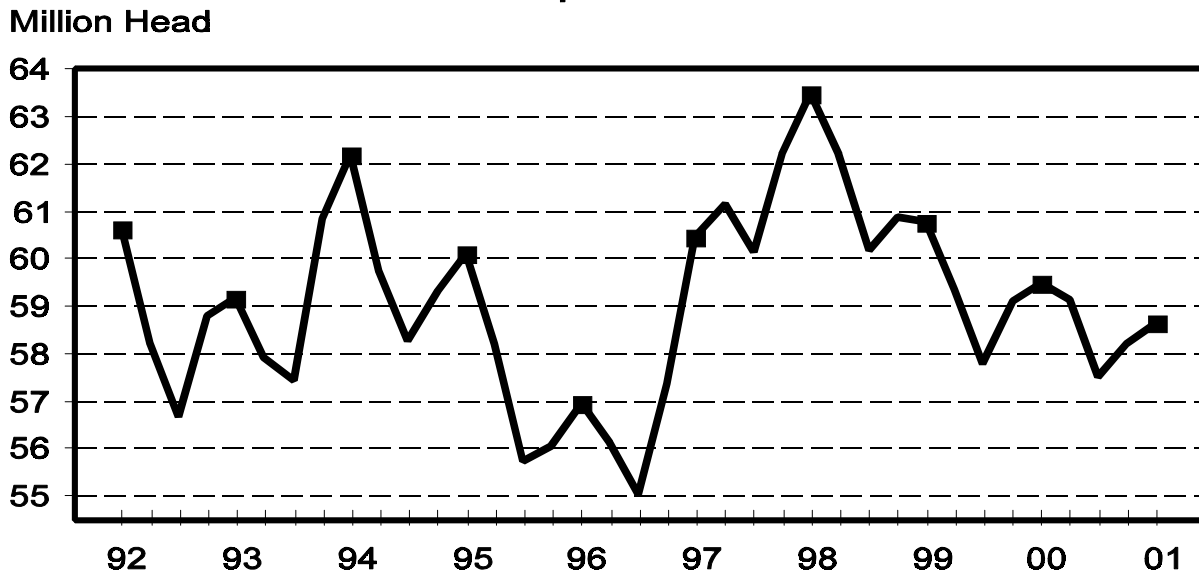
U.S. Hog Inventory Down 1 Percent

U.S. inventory of all hogs and pigs on September 1, 2001, was 58.6 million head. This was 1 percent below September 2000, but 1 percent above June 1, 2001.

Breeding inventory, at 6.16 million head, was down 1 percent from September 1, 2000, and down slightly from June 1, 2001. **Market hog inventory**, at 52.5 million head, was 1 percent below last year, but 1 percent above last quarter.

The June-August 2001 U.S. pig crop, at 25.0 million head, was 2 percent less than 2000, and 3 percent less than 1999. Sows farrowing during this period totaled 2.84 million head, 2 percent below last year. The sows farrowed during this quarter represented 46 percent of the breeding herd. The average pigs per litter was 8.82 pigs saved per litter for the June-August 2001 period, compared to 8.84 pigs last year. Pigs saved per litter by size of operation ranged from 7.40 for operations with 1-99 hogs to 8.90 for operations with more than 5,000 hogs and pigs.

U.S. Quarterly Hogs and Pigs Inventory September 1



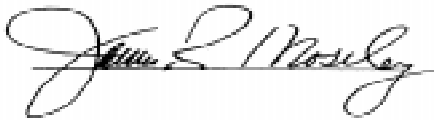
U.S. hog producers intend to have 2.88 million sows farrow during the September-November 2001 quarter, 1 percent above the actual farrowings during the same period in 2000, and 1 percent above 1999. Intended farrowings for December 2001-February 2002, at 2.84 million sows, are 3 percent above the same period in 2001, and up 1 percent from 2000.

The total number of hogs under contract, owned by operations with over 5,000 head, but raised by contractees, accounted for 35 percent of the total U.S. hog inventory, up from 33 percent last year.

Revisions

All inventory and pig crop estimates for September 2000 through June 2001 were reviewed using final pig crop, official slaughter, death loss, import, and export data in U.S. level balance sheets. Based on the findings of this review, adjustments of less than two percent were made to the inventory level for March 1, 2001 and June 1, 2001. Adjustments of less than one half percent were made to the September-November 2000 pig crop, slightly over three percent to the December 2000-February 2001 pig crop, and less than two percent to the March-May 2001 pig crop.

This report was approved on September 28, 2001.



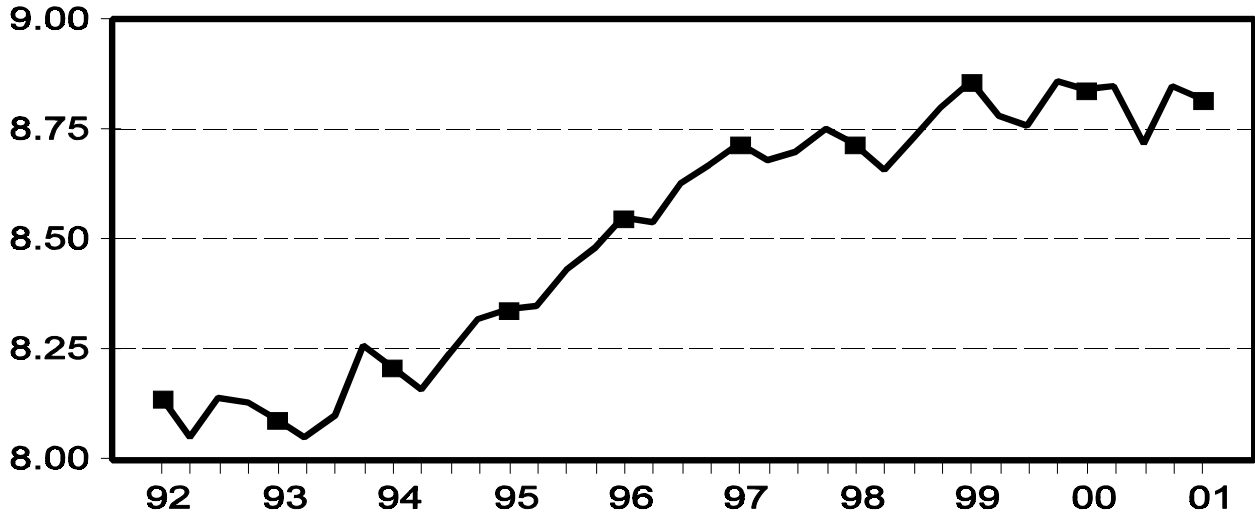
Acting Secretary of
Agriculture
James R. Moseley



Agricultural Statistics Board
Chairperson
Frederic A. Vogel

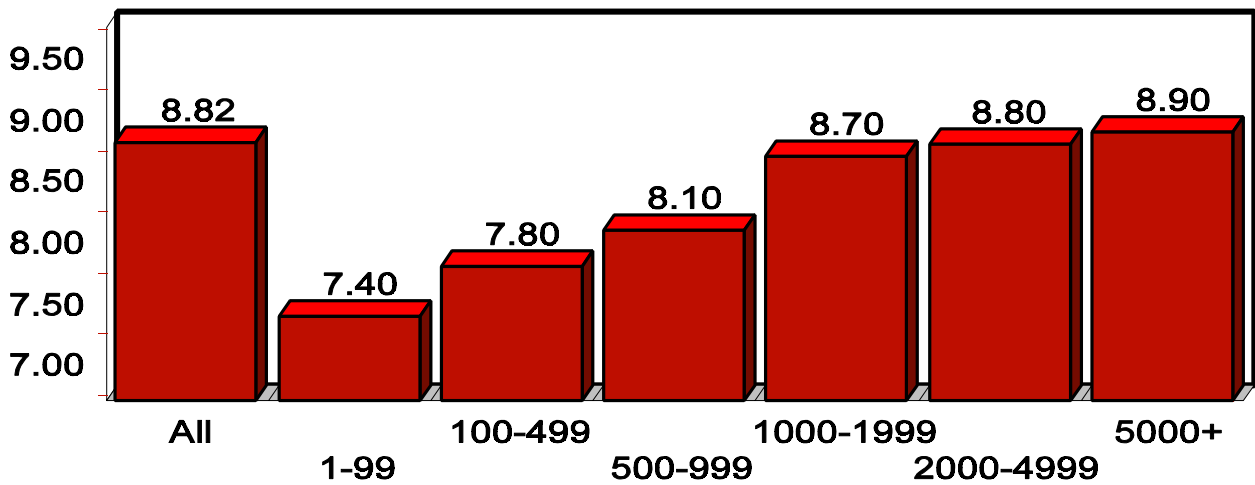
U.S. Litter Rate June - August

Number Head



U.S. Pigs per Litter By Size of Operation, June - August 2001

Number Head



**Hogs and Pigs: Inventory Number by Class, Weight Group,
and Quarter, United States, 1999-2001¹**

Item	1999	2000	2001	2001 as % of	
				1999	2000
	<i>1,000 Head</i>	<i>1,000 Head</i>	<i>1,000 Head</i>	<i>Percent</i>	<i>Percent</i>
March 1 Inventory					
All Hogs and Pigs	60,191	57,782	57,524	96	100
Kept for Breeding	6,527	6,190	6,232	95	101
Market	53,663	51,593	51,292	96	99
Market Hogs and Pigs by Weight Groups					
Under 60 Pounds	19,978	19,217	18,732	94	97
60-119 Pounds	12,899	12,409	12,417	96	100
120-179 Pounds	10,995	10,552	10,810	98	102
180 Pounds and Over	9,792	9,414	9,334	95	99
June 1 Inventory					
All Hogs and Pigs	60,896	59,117	58,223	96	98
Kept for Breeding	6,515	6,234	6,186	95	99
Market	54,380	52,884	52,037	96	98
Market Hogs and Pigs by Weight Groups					
Under 60 Pounds	20,532	19,907	19,568	95	98
60-119 Pounds	13,501	13,247	12,992	96	98
120-179 Pounds	11,076	10,710	10,521	95	98
180 Pounds and Over	9,272	9,019	8,957	97	99
September 1 Inventory					
All Hogs and Pigs	60,776	59,495	58,642	96	99
Kept for Breeding	6,301	6,246	6,158	98	99
Market	54,474	53,250	52,484	96	99
Market Hogs and Pigs by Weight Groups					
Under 60 Pounds	20,243	19,955	19,514	96	98
60-119 Pounds	13,414	13,055	12,840	96	98
120-179 Pounds	11,129	10,817	10,714	96	99
180 Pounds and Over	9,689	9,422	9,417	97	100
December 1 Inventory					
All Hogs and Pigs	59,342	59,138			
Kept for Breeding	6,234	6,270			
Market	53,109	52,868			
Market Hogs and Pigs by Weight Groups					
Under 60 Pounds	19,241	19,421			
60-119 Pounds	13,107	12,933			
120-179 Pounds	11,073	10,846			
180 Pounds and Over	9,687	9,669			

¹ May not add due to rounding.

**Farrowings: Number of Sows, Pig Crop, and Pigs per Litter,
United States, 1999-2002 ¹**

Item	1999	2000	2001	2002	2001 as % of		2002 as % of 2001
					1999	2000	
	<i>1,000 Head</i>	<i>1,000 Head</i>	<i>1,000 Head</i>	<i>1,000 Head</i>	<i>Percent</i>	<i>Percent</i>	<i>Percent</i>
Sows Farrowing							
Dec-Feb ^{2,3}	2,891	2,798	2,749	2,838	95	98	103
Mar-May	2,986	2,885	2,844		95	99	
Dec-May ²	5,877	5,683	5,593		95	98	
Jun-Aug	2,920	2,889	2,838		97	98	
Sep-Nov ⁴	2,844	2,838	2,877		101	101	
Jun-Nov ⁵	5,764	5,727	5,716		99	100	
Pig Crop							
Dec-Feb ²	25,247	24,522	23,969		95	98	
Mar-May	26,272	25,565	25,170		96	98	
Dec-May ²	51,519	50,087	49,140		95	98	
Jun-Aug	25,862	25,548	25,028		97	98	
Sep-Nov	24,973	25,119					
Jun-Nov	50,835	50,667					
	<i>Number</i>	<i>Number</i>	<i>Number</i>	<i>Number</i>	<i>Percent</i>	<i>Percent</i>	<i>Percent</i>
Pigs per Litter							
Dec-Feb ²	8.73	8.76	8.72		100	100	
Mar-May	8.80	8.86	8.85		101	100	
Dec-May ²	8.77	8.81	8.79		100	100	
Jun-Aug	8.86	8.84	8.82		100	100	
Sep-Nov	8.78	8.85					
Jun-Nov	8.82	8.85					

¹ May not add due to rounding.

² December preceding year.

³ Intentions for 2002.

⁴ Intentions for 2001.

⁵ Actual farrowings for June-August plus intentions for September-November.

Pigs per Litter: By Size of Operation, United States, 2000-2001

Pig Crop	Pigs per Litter on Operations Having					
	1-99 Head	100-499 Head	500-999 Head	1,000-1,999 Head	2,000-4,999 Head	5,000+ Head
	<i>Number</i>	<i>Number</i>	<i>Number</i>	<i>Number</i>	<i>Number</i>	<i>Number</i>
2000						
Dec-Feb ¹	7.50	7.90	8.20	8.50	8.70	8.90
Mar-May	7.80	7.90	8.30	8.60	8.80	9.00
Jun-Aug	7.40	7.90	8.30	8.60	8.80	9.00
Sep-Nov	7.60	8.10	8.40	8.70	8.80	9.00
2001						
Dec-Feb ¹	7.50	7.80	8.10	8.50	8.60	8.90
Mar-May	7.60	8.10	8.40	8.60	8.90	8.90
Jun-Aug	7.40	7.80	8.10	8.70	8.80	8.90

¹ December preceding year.

**Monthly Farrowings: Number of Sows, Pigs per Litter, and Pig Crop,
United States December-November 2000-2001^{1 2}**

Month	Sows Farrowing		Pigs per Litter		Pig Crop	
	2000	2001	2000	2001	2000	2001
	<i>1,000 Head</i>	<i>1,000 Head</i>	<i>Number</i>	<i>Number</i>	<i>1,000 Head</i>	<i>1,000 Head</i>
Dec ¹	922	901	8.77	8.66	8,091	7,803
Jan	911	906	8.76	8.71	7,977	7,887
Feb	965	943	8.76	8.78	8,454	8,279
Mar	974	963	8.87	8.83	8,639	8,497
Apr	956	930	8.85	8.83	8,461	8,207
May	955	952	8.86	8.90	8,465	8,466
Jun	960	953	8.83	8.79	8,479	8,369
Jul	970	932	8.85	8.81	8,580	8,204
Aug	959	954	8.85	8.86	8,489	8,455
Sep	970		8.84		8,578	
Oct	940		8.85		8,319	
Nov	928		8.86		8,222	
Total	11,410		8.83		100,754	

¹ December preceding year.

² Monthly values may not add to quarterly or annual totals due to rounding.

**Monthly Sows and Gilts: Inventory and Number Bred,
United States December-November 2000-2001^{1 2}**

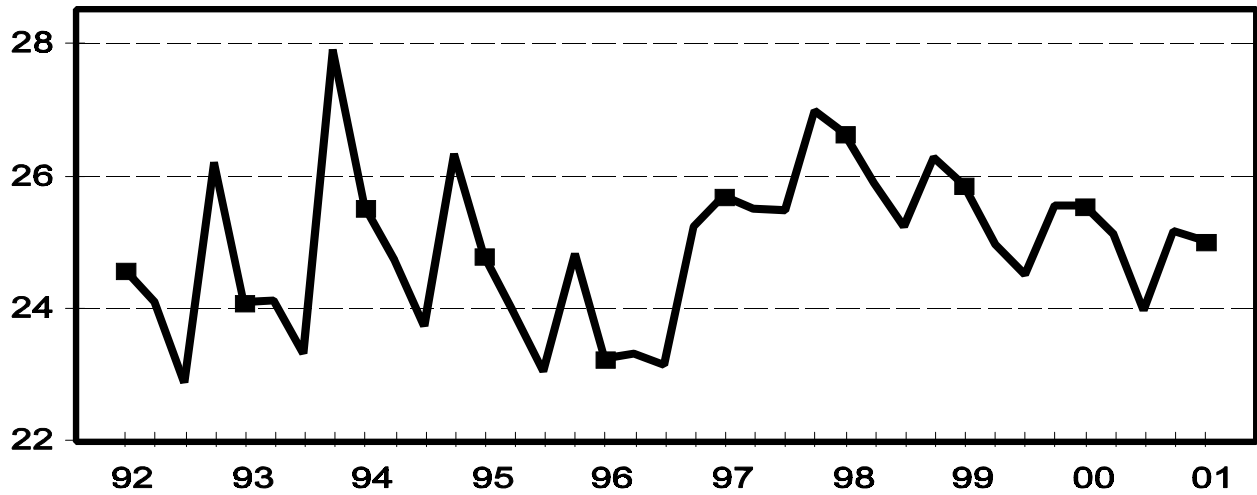
Month	Inventory 1st of Month			Bred during Month		
	2000	2001		2000	2001	
		Number	as % of 2000		Number	as % of 2000
	<i>1,000 Head</i>	<i>1,000 Head</i>	<i>Percent</i>	<i>1,000 Head</i>	<i>1,000 Head</i>	<i>Percent</i>
Dec ²		6,090			1,185	
Jan		6,030			1,169	
Feb		6,031			1,142	
Mar		6,053			1,200	
Apr		5,987			1,170	
May		5,974			1,165	
Jun		6,001			1,197	
Jul		5,955			1,155	
Aug		5,955			1,133	
Sep		5,975		1,234		
Oct	6,072			1,183		
Nov	6,055			1,168		
Total						

¹ Data series beginning October 2000.

² December preceding year.

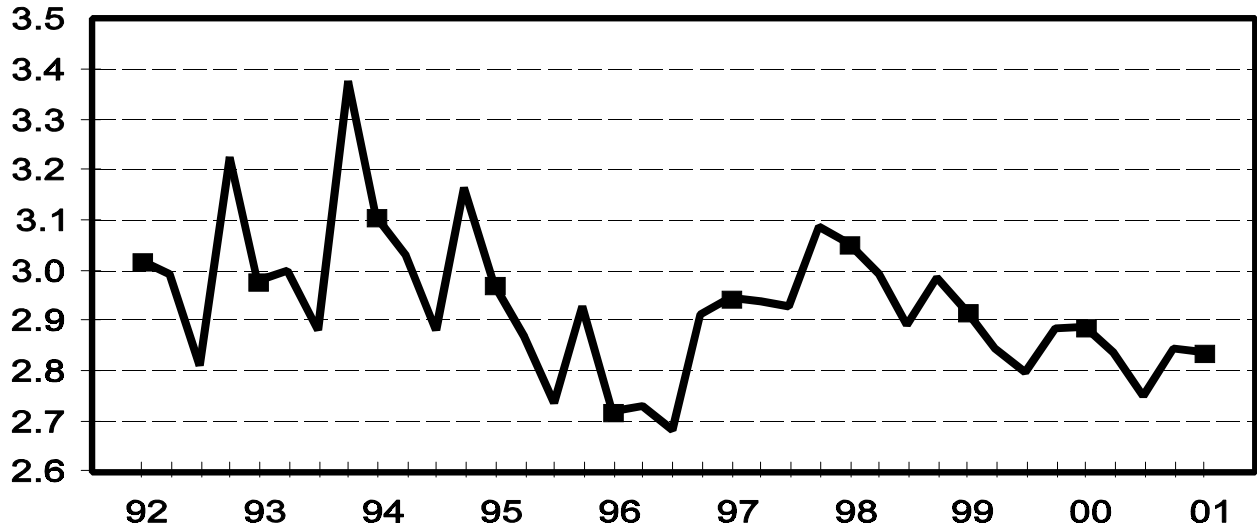
U.S. Quarterly Pig Crop June-August

Million Head



U.S. Quarterly Sows Farrowed June-August

Million Head



**Hogs and Pigs: Breeding, Market, and Total Inventory
by State and United States, March 1, 2000-2001¹**

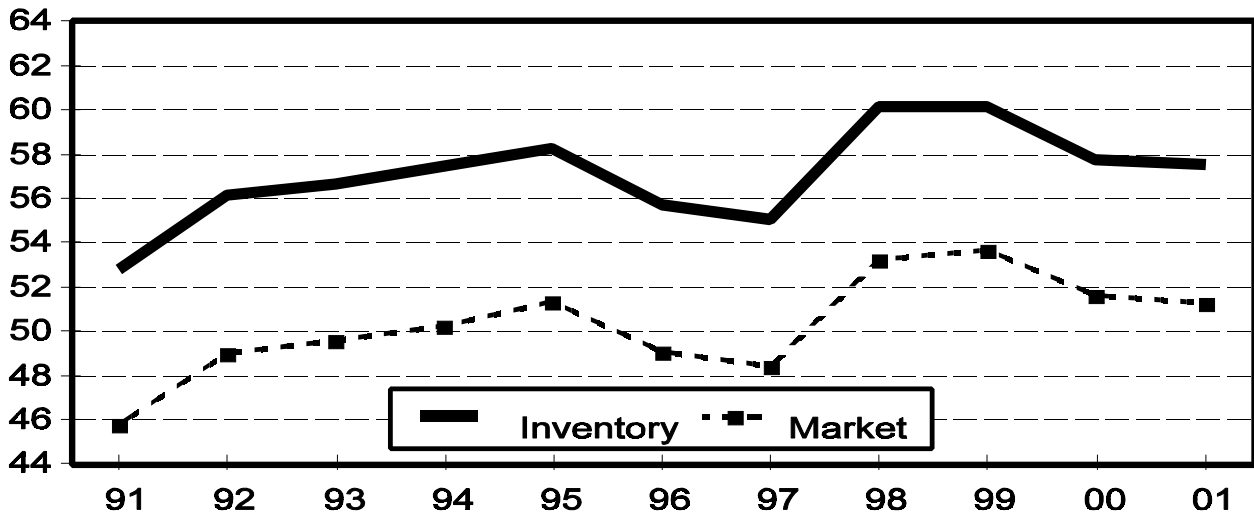
State	Breeding			Market			Total		
	2000	2001		2000	2001		2000	2001	
		Number	as % of 2000		Number	as % of 2000		Number	as % of 2000
	<i>1,000 Head</i>	<i>1,000 Head</i>	<i>Percent</i>	<i>1,000 Head</i>	<i>1,000 Head</i>	<i>Percent</i>	<i>1,000 Head</i>	<i>1,000 Head</i>	<i>Percent</i>
AR	110	105	95	580	545	94	690	650	94
CO	205	180	88	645	580	90	850	760	89
IL	430	440	102	3,620	3,610	100	4,050	4,050	100
IN	350	360	103	2,800	2,790	100	3,150	3,150	100
IA	1,160	1,120	97	13,640	13,280	97	14,800	14,400	97
KS	145	160	110	1,255	1,350	108	1,400	1,510	108
MI	120	120	100	840	780	93	960	900	94
MN	570	590	104	4,830	5,210	108	5,400	5,800	107
MO	380	380	100	2,620	2,520	96	3,000	2,900	97
NE	380	360	95	2,620	2,540	97	3,000	2,900	97
NC	1,000	1,000	100	8,400	8,300	99	9,400	9,300	99
OH	160	165	103	1,270	1,285	101	1,430	1,450	101
OK	310	340	110	1,880	1,900	101	2,190	2,240	102
PA	120	120	100	870	910	105	990	1,030	104
SD	125	135	108	1,105	1,135	103	1,230	1,270	103
TX	80	90	113	780	810	104	860	900	105
WI	65	80	123	505	510	101	570	590	104
Oth Sts ²	480	487	101	3,333	3,237	97	3,812	3,724	98
US	6,190	6,232	101	51,593	51,292	99	57,782	57,524	100

¹ May not add due to rounding.

² Individual State estimates not available for the 33 other States.

March 1 Hog Inventory & Market Hogs United States

Million Head



**Market Hogs and Pigs: Inventory Number by Weight Group,
State, and United States, March 1, 2000-2001¹**

State	Under 60 Lbs.		60-119 Lbs.		120-179 Lbs.		180 Lbs. and Over	
	2000	2001	2000	2001	2000	2001	2000	2001
	<i>1,000 Head</i>	<i>1,000 Head</i>	<i>1,000 Head</i>	<i>1,000 Head</i>	<i>1,000 Head</i>	<i>1,000 Head</i>	<i>1,000 Head</i>	<i>1,000 Head</i>
AR	220	195	135	130	125	120	100	100
CO	370	310	90	75	90	85	95	110
IL	1,260	1,280	880	870	820	830	660	630
IN	1,100	1,010	650	670	550	560	500	550
IA	4,310	3,980	3,590	3,600	2,970	3,070	2,770	2,630
KS	510	460	245	275	230	245	270	370
MI	295	310	215	185	170	160	160	125
MN	1,910	2,040	1,150	1,310	960	1,090	810	770
MO	1,140	1,110	680	610	510	500	290	300
NE	1,030	990	630	650	550	510	410	390
NC	3,400	3,350	1,950	1,800	1,650	1,700	1,400	1,450
OH	535	540	290	305	270	280	175	160
OK	840	840	300	320	250	260	490	480
PA	325	330	225	240	180	190	140	150
SD	370	390	280	300	250	245	205	200
TX	245	265	165	170	170	160	200	215
WI	195	190	110	110	100	110	100	100
Oth Sts ²	1,162	1,142	824	797	707	695	639	604
US	19,217	18,732	12,409	12,417	10,552	10,810	9,414	9,334

¹ Weight groups may not add to Market due to rounding.

² Individual State estimates not available for the 33 other States.

**Hogs and Pigs: Breeding, Market, and Total Inventory
by State and United States, June 1, 2000-2001¹**

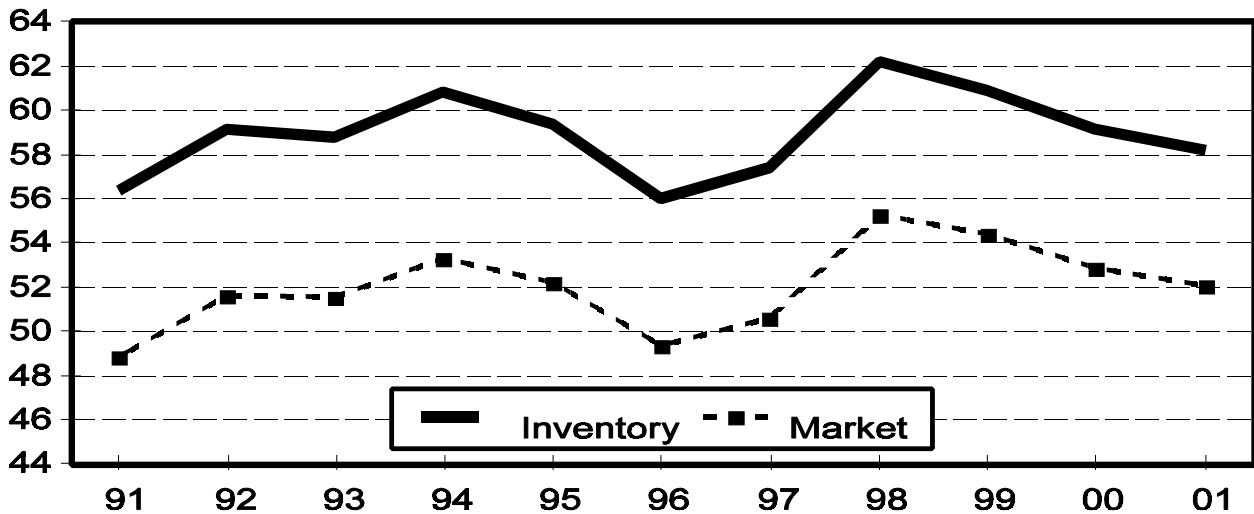
State	Breeding			Market			Total		
	2000	2001		2000	2001		2000	2001	
		Number	as % of 2000		Number	as % of 2000		Number	as % of 2000
	<i>1,000 Head</i>	<i>1,000 Head</i>	<i>Percent</i>	<i>1,000 Head</i>	<i>1,000 Head</i>	<i>Percent</i>	<i>1,000 Head</i>	<i>1,000 Head</i>	<i>Percent</i>
AR	110	105	95	580	545	94	690	650	94
CO	210	170	81	680	580	85	890	750	84
IL	430	420	98	3,720	3,680	99	4,150	4,100	99
IN	350	350	100	2,900	2,750	95	3,250	3,100	95
IA	1,160	1,120	97	14,240	13,680	96	15,400	14,800	96
KS	150	165	110	1,240	1,345	108	1,390	1,510	109
MI	110	110	100	880	810	92	990	920	93
MN	580	590	102	5,120	5,210	102	5,700	5,800	102
MO	380	390	103	2,620	2,610	100	3,000	3,000	100
NE	370	360	97	2,530	2,490	98	2,900	2,850	98
NC	1,000	1,000	100	8,600	8,600	100	9,600	9,600	100
OH	160	160	100	1,240	1,300	105	1,400	1,460	104
OK	340	330	97	1,930	1,860	96	2,270	2,190	96
PA	125	120	96	925	910	98	1,050	1,030	98
SD	125	140	112	1,105	1,130	102	1,230	1,270	103
TX	85	95	112	785	765	97	870	860	99
WI	65	75	115	515	495	96	580	570	98
Oth Sts ²	484	486	100	3,274	3,277	100	3,757	3,763	100
US	6,234	6,186	99	52,884	52,037	98	59,117	58,223	98

¹ May not add due to rounding.

² Individual State estimates not available for the 33 other States.

June 1 Hog Inventory & Market Hogs United States

Million Head



**Market Hogs and Pigs: Inventory Number by Weight Group,
State, and United States, June 1, 2000-2001¹**

State	Under 60 Lbs.		60-119 Lbs.		120-179 Lbs.		180 Lbs. and Over	
	2000	2001	2000	2001	2000	2001	2000	2001
	<i>1,000 Head</i>	<i>1,000 Head</i>	<i>1,000 Head</i>	<i>1,000 Head</i>	<i>1,000 Head</i>	<i>1,000 Head</i>	<i>1,000 Head</i>	<i>1,000 Head</i>
AR	210	190	135	140	130	115	105	100
CO	390	325	90	65	90	75	110	115
IL	1,360	1,320	920	950	820	760	620	650
IN	1,140	990	670	680	570	540	520	540
IA	4,480	4,250	4,060	3,800	3,080	3,080	2,620	2,550
KS	500	470	245	295	235	235	260	345
MI	390	315	200	215	160	155	130	125
MN	2,060	2,140	1,250	1,300	1,020	1,050	790	720
MO	1,150	1,280	660	560	510	470	300	300
NE	1,010	1,000	640	650	500	490	380	350
NC	3,500	3,500	2,000	2,110	1,700	1,620	1,400	1,370
OH	520	530	290	325	270	280	160	165
OK	840	850	400	310	230	270	460	430
PA	340	360	250	235	195	175	140	140
SD	390	430	310	280	240	245	165	175
TX	230	270	200	150	160	150	195	195
WI	195	195	120	115	110	100	90	85
Oth Sts ²	1,202	1,153	807	812	690	711	574	602
US	19,907	19,568	13,247	12,992	10,710	10,521	9,019	8,957

¹ Weight groups may not add to Market due to rounding.

² Individual State estimates not available for the 33 other States.

**Hogs and Pigs: Breeding, Market, and Total Inventory
by State and United States, September 1, 2000-2001¹**

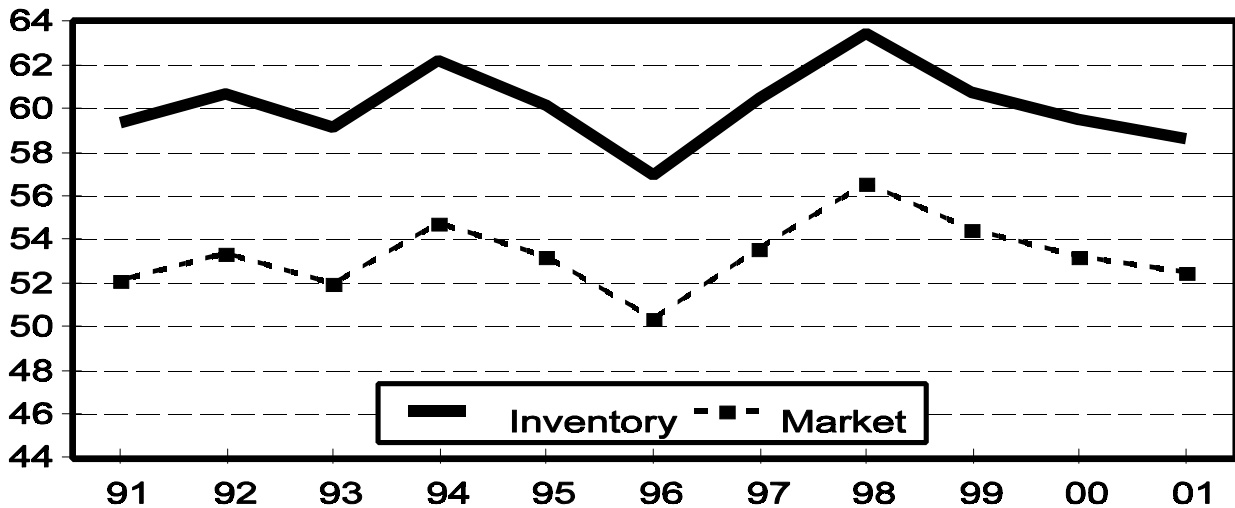
State	Breeding			Market			Total		
	2000	2001		2000	2001		2000	2001	
		Number	as % of 2000		Number	as % of 2000		Number	as % of 2000
	<i>1,000 Head</i>	<i>1,000 Head</i>	<i>Percent</i>	<i>1,000 Head</i>	<i>1,000 Head</i>	<i>Percent</i>	<i>1,000 Head</i>	<i>1,000 Head</i>	<i>Percent</i>
AR	105	100	95	575	605	105	680	705	104
CO	205	175	85	685	595	87	890	770	87
IL	420	420	100	3,630	3,730	103	4,050	4,150	102
IN	360	330	92	2,940	2,720	93	3,300	3,050	92
IA	1,160	1,120	97	14,140	13,580	96	15,300	14,700	96
KS	155	165	106	1,375	1,435	104	1,530	1,600	105
MI	110	110	100	910	850	93	1,020	960	94
MN	580	590	102	5,020	5,210	104	5,600	5,800	104
MO	380	380	100	2,620	2,620	100	3,000	3,000	100
NE	380	360	95	2,620	2,490	95	3,000	2,850	95
NC	1,000	1,000	100	8,700	8,700	100	9,700	9,700	100
OH	160	160	100	1,260	1,300	103	1,420	1,460	103
OK	340	330	97	1,990	1,970	99	2,330	2,300	99
PA	115	125	109	925	935	101	1,040	1,060	102
SD	130	140	108	1,150	1,130	98	1,280	1,270	99
TX	85	95	112	845	775	92	930	870	94
WI	65	75	115	525	485	92	590	560	95
Oth Sts ²	496	483	97	3,340	3,354	100	3,835	3,837	100
US	6,246	6,158	99	53,250	52,484	99	59,495	58,642	99

¹ May not add due to rounding.

² Individual State estimates not available for the 33 other States.

September 1 Hog Inventory & Market Hogs United States

Million Head



**Market Hogs and Pigs: Inventory Number by Weight Group,
State, and United States, September 1, 2000-2001¹**

State	Under 60 Lbs.		60-119 Lbs.		120-179 Lbs.		180 Lbs. and Over	
	2000	2001	2000	2001	2000	2001	2000	2001
	<i>1,000 Head</i>	<i>1,000 Head</i>	<i>1,000 Head</i>	<i>1,000 Head</i>	<i>1,000 Head</i>	<i>1,000 Head</i>	<i>1,000 Head</i>	<i>1,000 Head</i>
AR	220	250	135	125	120	115	100	115
CO	400	335	80	75	80	75	125	110
IL	1,260	1,360	900	890	820	800	650	680
IN	1,130	1,020	710	660	570	520	530	520
IA	4,420	4,200	3,900	3,710	3,140	3,070	2,680	2,600
KS	540	480	280	280	255	275	300	400
MI	360	320	230	225	180	175	140	130
MN	2,080	2,140	1,220	1,260	950	1,070	770	740
MO	1,120	1,150	690	590	520	500	290	380
NE	1,100	990	650	640	490	480	380	380
NC	3,450	3,450	2,000	2,100	1,750	1,750	1,500	1,400
OH	550	540	285	320	255	270	170	170
OK	925	870	325	310	245	220	495	570
PA	345	360	240	245	190	180	150	150
SD	420	390	290	285	255	260	185	195
TX	240	290	175	165	180	145	250	175
WI	195	195	120	110	110	90	100	90
Oth Sts ²	1,200	1,174	825	850	707	719	607	612
US	19,955	19,514	13,055	12,840	10,817	10,714	9,422	9,417

¹ Weight groups may not add to Market due to rounding.

² Individual State estimates not available for the 33 other States.

**Hogs and Pigs: Breeding, Market, and Total Inventory
by State and United States, December 1, 1999-2000¹**

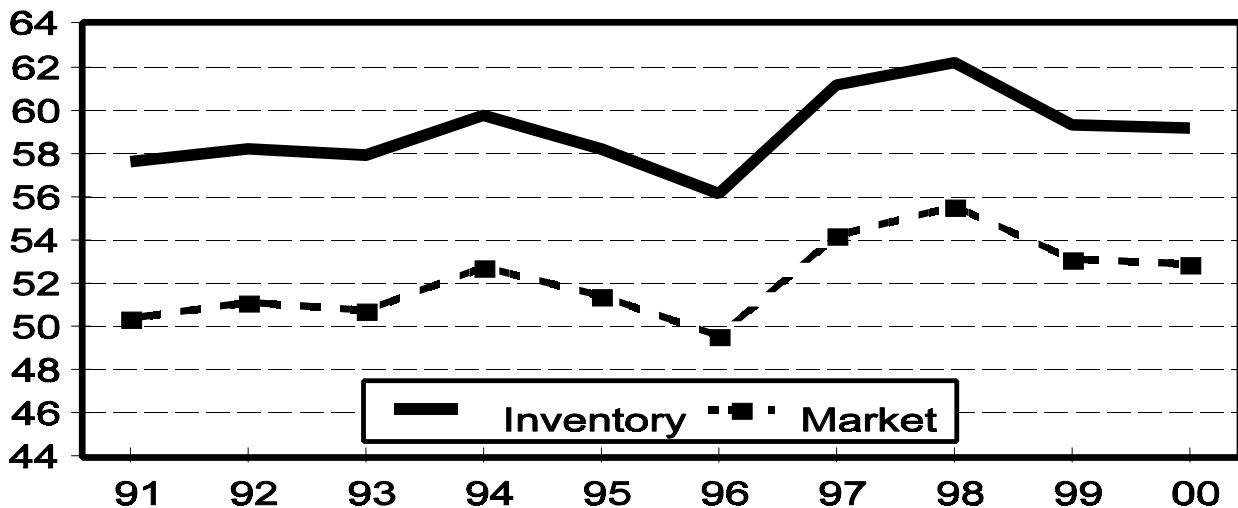
State	Breeding			Market			Total		
	1999	2000		1999	2000		1999	2000	
		Number	as % of 1999		Number	as % of 1999		Number	as % of 1999
	<i>1,000 Head</i>	<i>1,000 Head</i>	<i>Percent</i>	<i>1,000 Head</i>	<i>1,000 Head</i>	<i>Percent</i>	<i>1,000 Head</i>	<i>1,000 Head</i>	<i>Percent</i>
AR	110	110	100	600	575	96	710	685	96
CO	210	190	90	700	650	93	910	840	92
IL	420	450	107	3,630	3,700	102	4,050	4,150	102
IN	370	375	101	2,880	2,975	103	3,250	3,350	103
IA	1,160	1,120	97	14,240	13,980	98	15,400	15,100	98
KS	150	160	107	1,310	1,360	104	1,460	1,520	104
MI	120	110	92	860	840	98	980	950	97
MN	560	600	107	4,940	5,200	105	5,500	5,800	105
MO	410	380	93	2,740	2,520	92	3,150	2,900	92
NE	380	360	95	2,620	2,690	103	3,000	3,050	102
NC	1,000	1,000	100	8,500	8,300	98	9,500	9,300	98
OH	170	170	100	1,310	1,320	101	1,480	1,490	101
OK	310	340	110	1,950	1,970	101	2,260	2,310	102
PA	120	120	100	930	910	98	1,050	1,030	98
SD	120	140	117	1,140	1,180	104	1,260	1,320	105
TX	80	85	106	790	835	106	870	920	106
WI	65	75	115	505	535	106	570	610	107
Oth Sts ²	479	485	101	3,464	3,328	96	3,942	3,813	97
US	6,234	6,270	101	53,109	52,868	100	59,342	59,138	100

¹ May not add due to rounding.

² Individual State estimates not available for the 33 other States.

December 1 Hog Inventory & Market Hogs United States

Million Head



**Market Hogs and Pigs: Inventory Number by Weight Group,
State, and United States, December 1, 1999-2000 ¹**

State	Under 60 Lbs.		60-119 Lbs.		120-179 Lbs.		180 Lbs. and Over	
	1999	2000	1999	2000	1999	2000	1999	2000
	<i>1,000 Head</i>	<i>1,000 Head</i>	<i>1,000 Head</i>	<i>1,000 Head</i>	<i>1,000 Head</i>	<i>1,000 Head</i>	<i>1,000 Head</i>	<i>1,000 Head</i>
AR	210	210	140	135	140	125	110	105
CO	350	370	115	80	110	85	125	115
IL	1,270	1,310	900	920	800	810	660	660
IN	1,090	1,110	740	725	580	590	470	550
IA	4,360	4,360	3,770	3,790	3,210	3,090	2,900	2,740
KS	520	495	310	285	230	210	250	370
MI	330	320	205	200	170	170	155	150
MN	1,940	2,110	1,190	1,270	1,030	1,040	780	780
MO	1,140	1,010	770	680	520	510	310	320
NE	990	1,010	650	700	550	550	430	430
NC	3,350	3,400	1,950	1,800	1,750	1,650	1,450	1,450
OH	530	540	320	320	285	280	175	180
OK	820	880	310	355	270	245	550	490
PA	330	330	250	235	195	190	155	155
SD	370	430	290	290	270	260	210	200
TX	280	215	190	175	160	200	160	245
WI	165	190	135	125	105	110	100	110
Oth Sts ²	1,196	1,131	872	848	698	731	697	619
US	19,241	19,421	13,107	12,933	11,073	10,846	9,687	9,669

¹ Weight groups may not add to Market due to rounding.

² Individual State estimates not available for the 33 other States.

**Farrowings: Number of Sows, Pigs Per Litter, and Pig Crop
by State and United States, December-February 2000-2002^{1 2}**

State	Sows Farrowing				Pigs Per Litter		Pig Crop ³		
	2000	2001	2002 ⁴		2000	2001	2000	2001	
			Number	as % of 2001				Number	as % of 2000
	<i>1,000 Head</i>	<i>1,000 Head</i>	<i>1,000 Head</i>	<i>Percent</i>	<i>Number</i>	<i>Number</i>	<i>1,000 Head</i>	<i>1,000 Head</i>	<i>Percent</i>
AR	56	53	50	94	8.55	8.90	479	472	99
CO	86	76	80	105	8.50	8.50	731	646	88
IL	205	195	205	105	8.70	8.50	1,784	1,658	93
IN	145	155	145	94	8.70	8.80	1,262	1,364	108
IA	455	430	450	105	8.85	8.40	4,027	3,612	90
KS	74	73	75	103	8.70	8.55	644	624	97
MI	44	46	54	117	8.80	8.75	387	403	104
MN	245	260	265	102	8.80	8.95	2,156	2,327	108
MO	175	170	175	103	8.85	8.75	1,549	1,488	96
NE	160	140	160	114	8.75	8.80	1,400	1,232	88
NC	530	530	530	100	8.75	8.85	4,638	4,691	101
OH	75	73	73	100	8.70	8.50	653	621	95
OK	165	165	165	100	8.85	9.25	1,460	1,526	105
PA	46	51	56	110	8.70	8.80	400	449	112
SD	58	62	65	105	8.90	8.80	516	546	106
TX	36	37	41	111	9.50	8.90	342	329	96
WI	31	34	33	97	8.75	8.25	271	281	104
Oth Sts ⁵	212	199	216	108	8.60	8.53	1,823	1,700	93
US	2,798	2,749	2,838	103	8.76	8.72	24,522	23,969	98

¹ December preceding year.

² May not add due to rounding.

³ Number of pigs born December-February that were still on hand March 1, or had been sold.

⁴ Intentions.

⁵ Individual State estimates not available for the 33 other States.

**Farrowings: Number of Sows, Pigs per Litter, and Pig Crop
by State and United States, March-May 2000-2001 ¹**

State	Sows Farrowing			Pigs per Litter		Pig Crop ²		
	2000	2001		2000	2001	2000	2001	
		Number	as % of 2000				Number	as % of 2000
	<i>1,000 Head</i>	<i>1,000 Head</i>	<i>Percent</i>	<i>Number</i>	<i>Number</i>	<i>1,000 Head</i>	<i>1,000 Head</i>	<i>Percent</i>
AR	55	54	98	8.50	9.00	468	486	104
CO	88	78	89	8.40	8.30	739	647	88
IL	210	210	100	8.75	8.80	1,838	1,848	101
IN	145	150	103	8.85	8.85	1,283	1,328	104
IA	490	440	90	8.90	8.70	4,361	3,828	88
KS	76	76	100	8.90	8.60	676	654	97
MI	50	50	100	9.00	8.90	450	445	99
MN	260	265	102	9.00	9.05	2,340	2,398	102
MO	180	185	103	8.80	8.85	1,584	1,637	103
NE	155	160	103	8.85	8.80	1,372	1,408	103
NC	540	540	100	8.90	8.95	4,806	4,833	101
OH	75	73	97	8.90	8.70	668	635	95
OK	165	165	100	8.90	9.25	1,469	1,526	104
PA	48	52	108	8.80	8.90	422	463	110
SD	62	66	106	8.90	8.90	552	587	106
TX	37	39	105	9.50	8.80	352	343	97
WI	30	33	110	8.85	8.60	266	284	107
Oth Sts ³	219	208	95	8.77	8.76	1,919	1,820	95
US	2,885	2,844	99	8.86	8.85	25,565	25,170	98

¹ May not add due to rounding.

² Number of pigs born March-May that were still on hand June 1, or had been sold.

³ Individual State estimates not available for the 33 other States.

**Farrowings: Number of Sows, Pigs per Litter, and Pig Crop
by State and United States, June-August 2000-2001¹**

State	Sows Farrowing			Pigs per Litter		Pig Crop ²		
	2000	2001		2000	2001	2000	2001	
		Number	as % of 2000				Number	as % of 2000
	<i>1,000 Head</i>	<i>1,000 Head</i>	<i>Percent</i>	<i>Number</i>	<i>Number</i>	<i>1,000 Head</i>	<i>1,000 Head</i>	<i>Percent</i>
AR	55	56	102	9.25	9.20	509	515	101
CO	90	79	88	8.40	8.45	756	668	88
IL	200	205	103	8.70	8.60	1,740	1,763	101
IN	155	145	94	8.75	8.85	1,356	1,283	95
IA	470	430	91	8.80	8.50	4,136	3,655	88
KS	84	76	90	8.80	8.70	739	661	89
MI	50	51	102	8.90	9.05	445	462	104
MN	260	265	102	9.10	8.95	2,366	2,372	100
MO	180	175	97	8.80	8.90	1,584	1,558	98
NE	160	150	94	9.00	8.65	1,440	1,298	90
NC	540	550	102	8.80	9.00	4,752	4,950	104
OH	75	74	99	8.85	8.90	664	659	99
OK	170	175	103	8.90	9.35	1,513	1,636	108
PA	49	54	110	8.70	8.80	426	475	112
SD	62	65	105	9.00	8.80	558	572	103
TX	43	44	102	9.40	8.70	404	383	95
WI	30	34	113	8.90	8.10	267	275	103
Oth Sts ³	216	210	97	8.76	8.77	1,893	1,843	97
US	2,889	2,838	98	8.84	8.82	25,548	25,028	98

¹ May not add due to rounding.

² Number of pigs born June-August that were still on hand September 1, or had been sold.

³ Individual State estimates not available for the 33 other States.

**Farrowings: Number of Sows, Pigs per Litter, and Pig Crop
by State and United States, September-November 1999-2001 ¹**

State	Sows Farrowing				Pigs per Litter		Pig Crop ²		
	1999	2000	2001 ³		1999	2000	1999	2000	
			Number	as % of 2000				Number	as % of 1999
	<i>1,000 Head</i>	<i>1,000 Head</i>	<i>1,000 Head</i>	<i>Percent</i>	<i>Number</i>	<i>Number</i>	<i>1,000 Head</i>	<i>1,000 Head</i>	<i>Percent</i>
AR	55	55	54	98	8.50	9.00	468	495	106
CO	87	86	80	93	8.30	8.50	722	731	101
IL	200	210	210	100	8.60	8.70	1,720	1,827	106
IN	155	165	140	85	8.65	8.90	1,341	1,469	110
IA	490	440	450	102	8.90	8.85	4,361	3,894	89
KS	78	81	77	95	8.70	8.60	679	697	103
MI	49	48	53	110	9.00	9.05	441	434	98
MN	245	270	270	100	9.00	8.90	2,205	2,403	109
MO	190	175	175	100	8.70	8.75	1,653	1,531	93
NE	160	150	165	110	8.75	8.75	1,400	1,313	94
NC	520	530	550	104	8.75	8.85	4,550	4,691	103
OH	74	74	73	99	8.70	8.80	644	651	101
OK	155	165	170	103	9.00	9.35	1,395	1,543	111
PA	46	51	55	108	8.70	8.70	400	444	111
SD	57	65	66	102	8.90	8.90	507	579	114
TX	38	38	41	108	9.40	9.40	357	357	100
WI	31	33	32	97	8.70	8.55	270	282	104
Oth Sts ⁴	214	202	216	107	8.68	8.82	1,860	1,778	96
US	2,844	2,838	2,877	101	8.78	8.85	24,973	25,119	101

¹ May not add due to rounding.

² Number of pigs born September-November that were still on hand December 1, or had been sold.

³ Intentions.

⁴ Individual State estimates not available for the 33 other States.

Reliability of September 1 Hogs and Pigs Estimates

Survey Procedures: A random sample of 13,000 U.S. producers was surveyed to provide data for these estimates. Survey procedures ensured that all hog and pig producers, regardless of size, had a chance to be included in the survey. Large producers were sampled more heavily than small operations. Data were collected from about 10,900 operations, 84 percent of the total sample, during the first-half of September by mail, telephone, and face-to-face personal interviews. Regardless of when operations responded, they were asked to report inventories as of September 1.

Estimation Procedures: These hogs and pigs estimates were prepared by the Agricultural Statistics Board after reviewing recommendations and analysis submitted by each State office. National and State survey data were reviewed for reasonableness with each other and with estimates from past years using a balance sheet. The balance sheet begins with the previous inventory estimate, adds to it estimates of births and imports, and subtracts estimates of slaughter, exports, and deaths. This indicated ending inventory level is compared to the Agricultural Statistics Board estimate for reasonableness.

Revision Policy: Revisions to previous estimates are made to improve quarter to quarter relationships. Estimates for the previous four quarters are subject to revision when current estimates are made. In December, estimates for all quarters of the current and previous year are reviewed. The reviews are primarily based on hog check-off receipts and slaughter. Estimates will also be reviewed after data from the Department of Agriculture five-year Census of Agriculture are available. No revisions will be made after that date.

Reliability: Since all operations raising hogs are not included in the sample, survey estimates are subject to sampling variability. Survey results are also subject to non-sampling errors such as omissions, duplication, and mistakes in reporting, recording, and processing the data. The affects of these errors cannot be measured directly. They are minimized through rigid quality controls in the data collection process and through a careful review of all reported data for consistency and reasonableness.

To assist users in evaluating the reliability of the estimates in this report, the "Root Mean Square Error" is shown for selected items in the following table. The "**Root Mean Square Error**" is a statistical measure based on past performance and is computed using the difference between first and final estimates. The "Root Mean Square Error" for hog inventory estimates over the past 20 quarters is 1.1 percent. This means that chances are 2 out of 3 that the final estimate will not be above or below the current estimate of 58.6 million head by more than 1.1 percent. Chances are 9 out of 10 that the difference will not exceed 2.0 percent.

Reliability of September 1 Hog Estimates ¹

Item	Root Mean Square Error	90% Confidence Level		Difference Between First and Latest Estimates			Quarters	
				Average	Smallest	Largest	First Above Latest	First Below Latest
				<i>1,000 Head</i>	<i>1,000 Head</i>	<i>1,000 Head</i>	<i>Number</i>	<i>Number</i>
All Hogs & Pigs	1.1	2.0	1,173	532	40	1,240	11	9
Pig Crop	1.4	2.4	601	265	3	927	12	8
Expected Farrowings								
Next Quarter	2.2	3.8	109	44	1	157	11	9
Following	3.6	6.2	176	76	6	300	10	10

¹ Based on quarterly records for the past 20 quarters.

Index

Page

Farrowings: Number of Sows, Pig Crop, and Pigs per Litter, United States	5
Farrowings: Number of Sows, Pigs per Litter, and Pig Crop, by State and United States, December-February	16
Farrowings: Number of Sows, Pigs per Litter, and Pig Crop, by State and United States, June-August	18
Farrowings: Number of Sows, Pigs per Litter, and Pig Crop, by State and United States, March-May	17
Farrowings: Number of Sows, Pigs per Litter, and Pig Crop, by State and United States, September-November	19
Hogs and Pigs: Breeding, Market, and Total Inventory by State and United States, December 1	14
Hogs and Pigs: Breeding, Market, and Total Inventory by State and United States, June 1	10
Hogs and Pigs: Breeding, Market, and Total Inventory by State and United States, March 1	8
Hogs and Pigs: Breeding, Market, and Total Inventory by State and United States, September 1	12
Hogs and Pigs: Inventory Number by Class, Weight Group, and Quarter, United States	4
Market Hogs and Pigs: Inventory Number by Weight Group, State, and United States, December 1	15
Market Hogs and Pigs: Inventory Number by Weight Group, State, and United States, June 1	11
Market Hogs and Pigs: Inventory Number by Weight Group, State, and United States, March 1	9
Market Hogs and Pigs: Inventory Number by Weight Group, State, and United States, September 1	13
Monthly Farrowings: Number of Sows, Pigs per Litter, and Pig Crop, United States, December-November	6
Monthly Sows and Gilts: Inventory and Number Bred, United States, December-November	6
Pigs per Litter: By Size of Operation, United States	5
Reliability of Hogs and Pigs Estimates	20

The next "Monthly Hogs and Pigs" report will be released at 3 p.m. ET on October 26, 2001.

The next "Quarterly Hogs and Pigs" report will be released at 3 p.m. ET on December 28, 2001.

The United States Department of Agriculture (USDA) prohibits discrimination in all its programs on the basis of race, color, national origin, gender, religion, age, disability, political beliefs, sexual orientation, and marital or family status. (Not all prohibited bases apply to all programs.) Persons with disabilities who require alternative means for communication of program information (braille, large print, audiotape, etc.) should contact the USDA's TARGET Center at 202-720-2600 (voice and TDD).

To file a complaint of discrimination, write USDA, Director, Office of Civil Rights, Room 326-W, Whitten Building, 1400 Independence Avenue, SW, Washington, D.C., 20250-9410, or call 202-720-5964 (voice or TDD). USDA is an equal opportunity provider and employer.

ACCESS TO REPORTS!!

For your convenience, there are several ways to obtain NASS reports, data products, and services:

INTERNET ACCESS

All NASS reports are available free of charge on the worldwide Internet. For access, connect to the Internet and go to the NASS Home Page at: <http://www.usda.gov/nass/>. Select "Today's Reports" or Publications and then Reports by Calendar or Publications and then Search, by Title or Subject.

E-MAIL SUBSCRIPTION

There are two options for subscribing via e-mail. All NASS reports are available by subscription free of charge direct to your e-mail address. 1) Starting with the NASS Home Page at <http://www.usda.gov/nass/>, click on **Publications**, then click on the **Subscribe by E-mail** button which takes you to the page describing e-mail delivery of reports. Finally, click on **Go to the Subscription Page** and follow the instructions. 2) If you do NOT have Internet access, send an e-mail message to: usda-reports@usda.mannlib.cornell.edu. In the body of the message type the word: **list**.

AUTOFAX ACCESS

NASSFax service is available for some reports from your fax machine. Please call 202-720-2000, using the handset attached to your fax. Respond to the voice prompts. Document 0411 is a list of available reports.

PRINTED REPORTS OR DATA PRODUCTS

CALL OUR TOLL-FREE ORDER DESK: 800-999-6779 (U.S. and Canada)
Other areas, please call 703-605-6220 FAX: 703-605-6900
(Visa, MasterCard, check, or money order acceptable for payment.)

ASSISTANCE

For **assistance** with general agricultural statistics or further information about NASS or its products or services, contact the **Agricultural Statistics Hotline** at **800-727-9540**, 7:30 a.m. to 4:00 p.m. ET, or e-mail: nass@nass.usda.gov.

USDA to Hold Public Forum
October 15, 2001

Holiday Inn Mart Plaza
Chicago, Illinois

The National Agricultural Statistics Service will be organizing an open forum for data users. The purpose will be to provide updates on pending changes in the various statistical and information programs and to seek comments and input from data users. The other USDA agencies to be represented will include the Agricultural Marketing Service, the Economic Research Service, the Foreign Agricultural Service, and the World Agricultural Outlook Board. The Foreign Trade Division from the Census Bureau and the National Weather Service will also be included in the meeting.

For registration details for the Data User's meeting, see the NASS home page at <http://www.usda.gov/nass/> Or contact Karlyn McCutcheon (NASS) at (202) 690-8141 or at karlyn_mccutcheon@nass.usda.gov.

This Public Forum precedes an Industry Outlook meeting that will be held at the same location on October 16, 2001. The outlook meeting brings together analysts from the various commodity sectors to discuss the outlook situation. For more information about the outlook meeting and to register for it contact Terry Francl at (847) 685-8769 or at terry@fb.org.