

Monthly Hogs and Pigs

Released October 26, 2001, by the National Agricultural Statistics Service (NASS), Agricultural Statistics Board, U.S. Department of Agriculture. For information on "Monthly Hogs and Pigs" call Rodger Ott at 202-720-3106, office hours 7:00 a.m. to 4:00 p.m. ET.

September Pig Crop Down Slightly

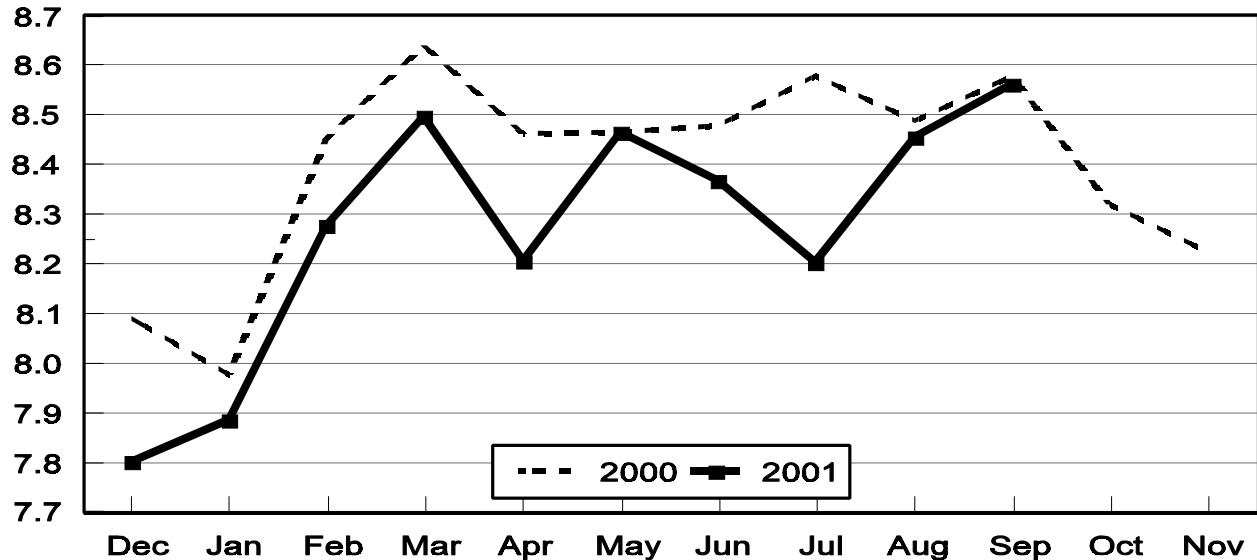
The September 2001 U.S. pig crop at 8.56 million head, was slightly less than the previous year. Sows farrowing during this period totaled 964 thousand head, 1 percent below last year. The average pigs per litter for September rose to 8.88, compared to 8.84 last year.

The U.S. inventory of sows and gilts on October 1, 2001, was 5.99 million head, 1 percent below October 1, 2000.

U.S. sows and gilts bred during September totaled 1.17 million head, up 1 percent from September 2000.

U.S. Monthly Pig Crop

Million Head



Special Note

Monthly farrowing and pig crop estimates are preliminary and may be revised in the Quarterly Hogs and Pigs Reports. Various factors can require revisions, such as sample variability, difference in reporting time-frame (monthly vs. quarterly), and pre-weaning and post-weaning death loss. Please refer to the Revision Policy on Page 3 of this report for more information.

**Monthly Farrowings: Number of Sows, Pigs per Litter, and Pig Crop,
United States December-November 2000-2001^{1 2}**

Month	Sows Farrowing		Pigs per Litter		Pig Crop	
	2000	2001	2000	2001	2000	2001
	<i>1,000 Head</i>	<i>1,000 Head</i>	<i>Number</i>	<i>Number</i>	<i>1,000 Head</i>	<i>1,000 Head</i>
Dec ¹	922	901	8.77	8.66	8,091	7,803
Jan	911	906	8.76	8.71	7,977	7,887
Feb	965	943	8.76	8.78	8,454	8,279
Mar	974	963	8.87	8.83	8,639	8,497
Apr	956	930	8.85	8.83	8,461	8,207
May	955	952	8.86	8.90	8,465	8,466
Jun	960	953	8.83	8.79	8,479	8,369
Jul	970	932	8.85	8.81	8,580	8,204
Aug	959	954	8.85	8.86	8,489	8,455
Sep	970	964	8.84	8.88	8,578	8,564
Oct	940		8.85		8,319	
Nov	928		8.86		8,222	
Total	11,410		8.83		100,754	

¹ December preceding year.

² Monthly values may not add to quarterly or annual totals due to rounding.

**Monthly Sows and Gilts: Inventory and Number Bred,
United States December-November 2000-2001^{1 2}**

Month	Inventory 1st of Month			Bred during Month ³		
	2000	2001		2000	2001	
		Number	as % of 2000		Number	as % of 2000
	<i>1,000 Head</i>	<i>1,000 Head</i>	<i>Percent</i>	<i>1,000 Head</i>	<i>1,000 Head</i>	<i>Percent</i>
Dec ²		6,090			1,185	
Jan		6,030			1,169	
Feb		6,031			1,142	
Mar		6,053			1,200	
Apr		5,987			1,170	
May		5,974			1,165	
Jun		6,001			1,197	
Jul		5,955			1,155	
Aug		5,955			1,133	
Sep		5,975		1,159	1,171	101
Oct	6,072	5,990	99	1,173		
Nov	6,055			1,168		
Total						

¹ Data series beginning October 2000.

² December preceding year.

³ September and October 2000 revised.

Survey Procedures: A random sample of 3,000 U.S. producers from contractors to independent producers were used to provide data for these estimates. Survey procedures ensured that all breeding and farrowing operations, regardless of size, had a chance to be included in the survey. Large producers were sampled more heavily than small operations. Data were collected during the first-half of the month by mail, telephone, and face-to-face personal interviews. Operations were asked to provide information on sow and gilt inventories as of the first of the month, sows and gilts bred during the previous month, sows and gilts farrowed during the previous month, and the pig crop from these litters.

Revision Policy: Revisions to previous monthly estimates are made during the quarterly report. These revisions are to improve month to month, and quarter to quarter relationships. In December, estimates for all months and quarters of the current and previous year are reviewed. The reviews are primarily based on hog check-off receipts and slaughter. Estimates will also be reviewed after data from the Department of Agriculture five-year Census of Agriculture are available. No revisions will be made after that date.

Reliability: Since all operations with sow and gilt inventory are not included in the sample, survey estimates are subject to sampling variability. Survey results are also subject to non-sampling errors such as omissions, duplication, and mistakes in reporting, recording, and processing the data. The affects of these errors cannot be measured directly. They are minimized through rigid quality controls in the data collection process and through a careful review of all reported data for consistency and reasonableness.

The next "Monthly Hogs and Pigs" report will be released at 3 p.m. ET on November 30, 2001.

The United States Department of Agriculture (USDA) prohibits discrimination in all its programs on the basis of race, color, national origin, gender, religion, age, disability, political beliefs, sexual orientation, and marital or family status. (Not all prohibited bases apply to all programs.) Persons with disabilities who require alternative means for communication of program information (braille, large print, audiotape, etc.) should contact the USDA's TARGET Center at 202-720-2600 (voice and TDD).

To file a complaint of discrimination, write USDA, Director, Office of Civil Rights, Room 326-W, Whitten Building, 1400 Independence Avenue, SW, Washington, D.C., 20250-9410, or call 202-720-5964 (voice or TDD). USDA is an equal opportunity provider and employer.

ACCESS TO REPORTS!!

For your convenience, there are several ways to obtain NASS reports, data products, and services:

INTERNET ACCESS

All NASS reports are available free of charge on the worldwide Internet. For access, connect to the Internet and go to the NASS Home Page at: <http://www.usda.gov/nass/>. Select "Today's Reports" or Publications and then Reports by Calendar or Publications and then Search, by Title or Subject.

E-MAIL SUBSCRIPTION

There are two options for subscribing via e-mail. All NASS reports are available by subscription free of charge direct to your e-mail address. 1) Starting with the NASS Home Page at <http://www.usda.gov/nass/>, click on **Publications**, then click on the **Subscribe by E-mail** button which takes you to the page describing e-mail delivery of reports. Finally, click on **Go to the Subscription Page** and follow the instructions. 2) If you do NOT have Internet access, send an e-mail message to: usda-reports@usda.mannlib.cornell.edu. In the body of the message type the word: **list**.

AUTOFAX ACCESS

NASSFax service is available for some reports from your fax machine. Please call 202-720-2000, using the handset attached to your fax. Respond to the voice prompts. Document 0411 is a list of available reports.

PRINTED REPORTS OR DATA PRODUCTS

CALL OUR TOLL-FREE ORDER DESK: 800-999-6779 (U.S. and Canada)
Other areas, please call 703-605-6220 FAX: 703-605-6900
(Visa, MasterCard, check, or money order acceptable for payment.)

ASSISTANCE

For **assistance** with general agricultural statistics or further information about NASS or its products or services, contact the **Agricultural Statistics Hotline** at **800-727-9540**, 7:30 a.m. to 4:00 p.m. ET, or e-mail: nass@nass.usda.gov.