

Released March 28, 2002, by the National Agricultural Statistics Service (NASS), Agricultural Statistics Board, U.S. Department of Agriculture. For information on "Quarterly Hogs and Pigs" call Rodger Ott at 202-720-3106, office hours 7:00 a.m. to 4:00 p.m. ET.

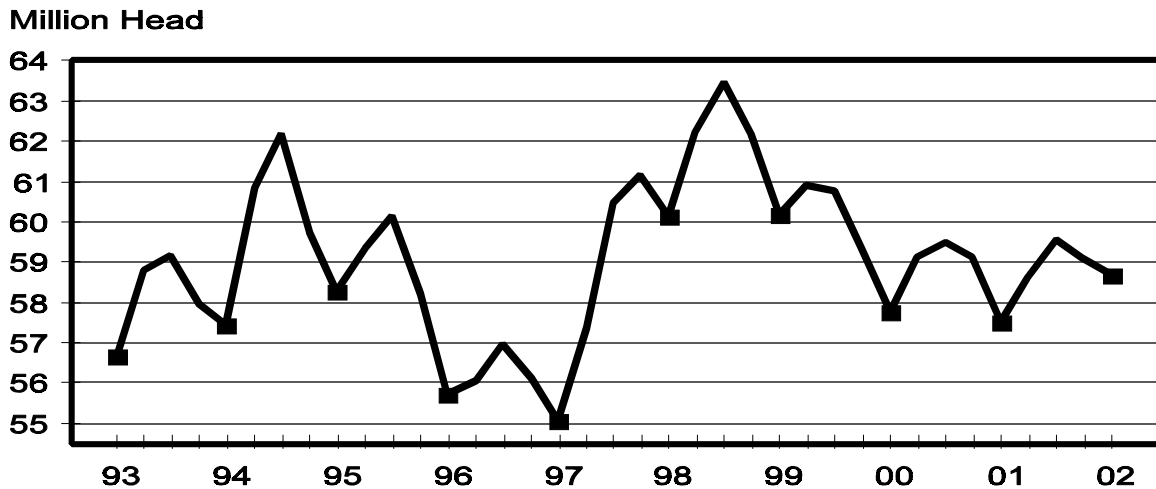
## U.S. Hog Inventory Up 2 Percent

**U.S. inventory** of all hogs and pigs on March 1, 2002, was 58.7 million head. This was 2 percent above March 2001, but 1 percent below December 1, 2001.

**Breeding inventory**, at 6.24 million head, was up slightly from both March 1, 2001, and last quarter. Market hog inventory, at 52.5 million head, was 2 percent above last year but 1 percent below last quarter.

**The December 2001-February 2002 U.S. pig crop**, at 24.7 million head, was 3 percent more than 2001, and 1 percent more than 2000. Sows farrowing during this period totaled 2.83 million head, 3 percent above last year. The sows farrowed during this quarter represented 46 percent of the breeding herd. The average pigs per litter was 8.73 pigs saved per litter for the December 2001-February 2002 period, compared to 8.72 pigs last year. Pigs saved per litter by size of operation ranged from 7.30 for operations with 1-99 hogs to 8.80 for operations with more than 5,000 hogs and pigs.

## U.S. Quarterly Hogs and Pigs Inventory March 1



**U.S. hog producers** intend to have 2.90 million sows farrow during the March-May 2002 quarter, 1 percent above the actual farrowings during the same period in 2001, and slightly above 2000. Intended farrowings for June-August 2002, at 2.90 million sows, are 1 percent above the same period in 2001, and up slightly from 2000.

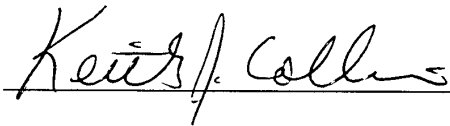
The total number of hogs under contract, owned by operations with over 5,000 head, but raised by contractees, accounted for 31 percent of the total U.S. hog inventory, down from 32 percent last year.

### Revisions

**All inventory and pig crop estimates** for March 2001 through December 2001 were reviewed using final pig crop, official slaughter, death loss, import, and export data in U.S. level balance sheets. Based on the findings of this review, adjustments of one percent were made to the September 1, 2001 inventory, two percent to the June-August 2001 pig crop, and one half percent to the December 1, 2001 inventory.

---

This report was approved on March 28, 2002.



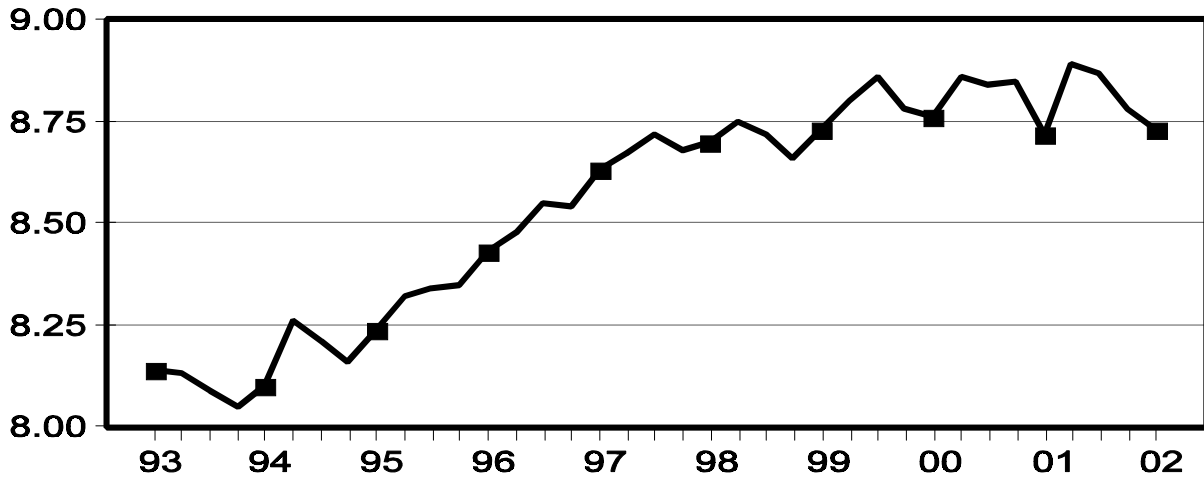
Acting Secretary of  
Agriculture  
Keith J. Collins



Agricultural Statistics Board  
Chairperson  
Frederic A. Vogel

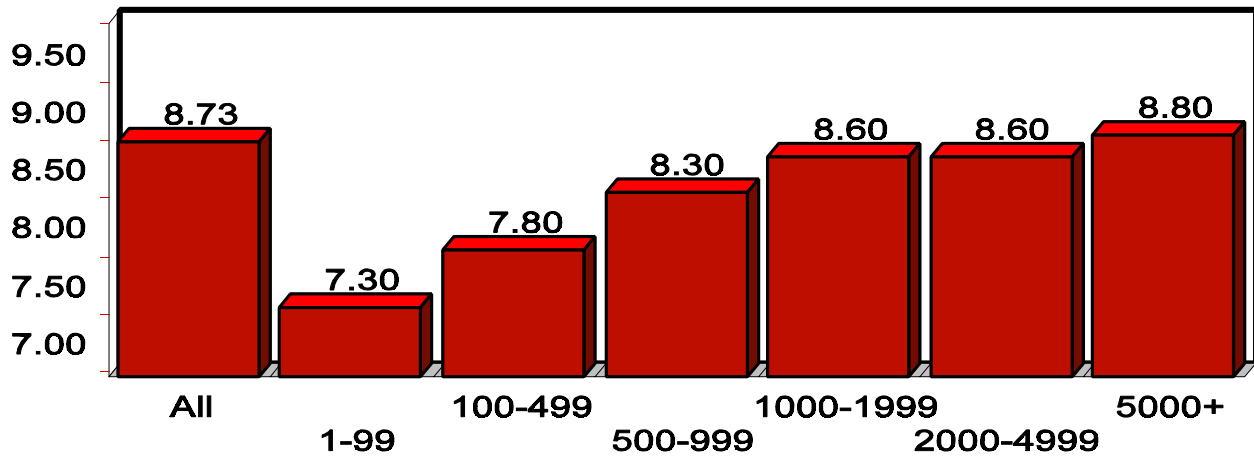
## U.S. Quarterly Litter Rate December - February

Number Head



## U.S. Pigs per Litter By Size of Operation, Dec. 2001 - Feb. 2002

Number Head



**Hogs and Pigs: Inventory Number by Class, Weight Group,  
and Quarter, United States, 2000-2002 <sup>1</sup>**

Item	2000	2001	2002	2002 as % of	
				2000	2001
	<i>1,000 Head</i>	<i>1,000 Head</i>	<i>1,000 Head</i>	<i>Percent</i>	<i>Percent</i>
March 1 Inventory					
All Hogs and Pigs	57,782	57,524	58,698	102	102
Kept for Breeding	6,190	6,232	6,236	101	100
Market	51,593	51,292	52,461	102	102
Market Hogs and Pigs by Weight Groups					
Under 60 Pounds	19,217	18,737	19,381	101	103
60-119 Pounds	12,409	12,417	12,730	103	103
120-179 Pounds	10,552	10,805	10,914	103	101
180 Pounds and Over	9,414	9,334	9,436	100	101
June 1 Inventory					
All Hogs and Pigs	59,117	58,603			
Kept for Breeding	6,234	6,186			
Market	52,884	52,417			
Market Hogs and Pigs by Weight Groups					
Under 60 Pounds	19,907	19,923			
60-119 Pounds	13,247	12,992			
120-179 Pounds	10,710	10,536			
180 Pounds and Over	9,019	8,967			
September 1 Inventory					
All Hogs and Pigs	59,495	59,577			
Kept for Breeding	6,246	6,158			
Market	53,250	53,419			
Market Hogs and Pigs by Weight Groups					
Under 60 Pounds	19,955	19,741			
60-119 Pounds	13,055	13,408			
120-179 Pounds	10,817	10,854			
180 Pounds and Over	9,422	9,417			
December 1 Inventory					
All Hogs and Pigs	59,138	59,074			
Kept for Breeding	6,270	6,209			
Market	52,868	52,864			
Market Hogs and Pigs by Weight Groups					
Under 60 Pounds	19,421	19,304			
60-119 Pounds	12,933	12,750			
120-179 Pounds	10,846	10,792			
180 Pounds and Over	9,669	10,018			

<sup>1</sup> May not add due to rounding.

**Farrowings: Number of Sows, Pig Crop and Pigs per Litter,  
United States, 2000-2002 <sup>1</sup>**

Item	2000	2001	2002	2002 as % of	
				2000	2001
	<i>1,000 Head</i>	<i>1,000 Head</i>	<i>1,000 Head</i>	<i>Percent</i>	<i>Percent</i>
Sows Farrowing					
Dec-Feb <sup>2</sup>	2,798	2,748	2,832	101	103
Mar-May <sup>3</sup>	2,885	2,870	2,896	100	101
Dec-May <sup>2 4</sup>	5,683	5,619	5,728	101	102
Jun-Aug <sup>3</sup>	2,889	2,878	2,896	100	101
Sep-Nov	2,838	2,846			
Jun-Nov	5,727	5,724			
Pig Crop					
Dec-Feb <sup>2</sup>	24,522	23,963	24,711	101	103
Mar-May	25,565	25,509			
Dec-May <sup>2</sup>	50,087	49,472			
Jun-Aug	25,548	25,539			
Sep-Nov	25,112	24,972			
Jun-Nov	50,660	50,511			
	<i>Number</i>	<i>Number</i>	<i>Number</i>	<i>Percent</i>	<i>Percent</i>
Pigs per Litter					
Dec-Feb <sup>2</sup>	8.76	8.72	8.73	100	100
Mar-May	8.86	8.89			
Dec-May <sup>2</sup>	8.81	8.81			
Jun-Aug	8.84	8.87			
Sep-Nov	8.85	8.78			
Jun-Nov	8.85	8.82			

<sup>1</sup> May not add due to rounding.

<sup>2</sup> December preceding year.

<sup>3</sup> Intentions for 2002.

<sup>4</sup> Actual farrowings for December 2001-February 2002 plus intentions for March-May 2002.

**Pigs per Litter: By Size of Operation, United States, 2001-2002**

Pig Crop	Pigs per Litter on Operations Having					
	1-99 Head	100-499 Head	500-999 Head	1,000-1,999 Head	2,000-4,999 Head	5,000+ Head
	<i>Number</i>	<i>Number</i>	<i>Number</i>	<i>Number</i>	<i>Number</i>	<i>Number</i>
2001						
Dec-Feb <sup>1</sup>	7.50	7.80	8.10	8.50	8.60	8.90
Mar-May	7.60	8.20	8.40	8.60	8.90	9.00
Jun-Aug	7.40	7.90	8.20	8.70	8.90	9.00
Sep-Nov	7.40	8.00	8.10	8.60	8.80	8.90
2002						
Dec-Feb <sup>1</sup>	7.30	7.80	8.30	8.60	8.60	8.80

<sup>1</sup> December preceding year.

**Monthly Farrowings: Number of Sows, Pigs per Litter, and Pig Crop,  
United States, December-November 2001-2002<sup>1 2</sup>**

Month	Sows Farrowing		Pigs per Litter		Pig Crop	
	2001	2002	2001	2002	2001	2002
	<i>1,000 Head</i>	<i>1,000 Head</i>	<i>Number</i>	<i>Number</i>	<i>1,000 Head</i>	<i>1,000 Head</i>
Dec <sup>1</sup>	901	924	8.66	8.66	7,803	8,005
Jan	906	943	8.71	8.71	7,887	8,214
Feb	941	965	8.79	8.80	8,273	8,492
Mar	959		8.87		8,503	
Apr	953		8.90		8,481	
May	958		8.90		8,525	
Jun	963		8.85		8,526	
Jul	961		8.87		8,522	
Aug	954		8.90		8,491	
Sep	966		8.75		8,448	
Oct	950		8.78		8,344	
Nov	930		8.80		8,180	
Total	11,342		8.81		99,983	

<sup>1</sup> December preceding year.

<sup>2</sup> Monthly values may not add to quarterly or annual totals due to rounding.

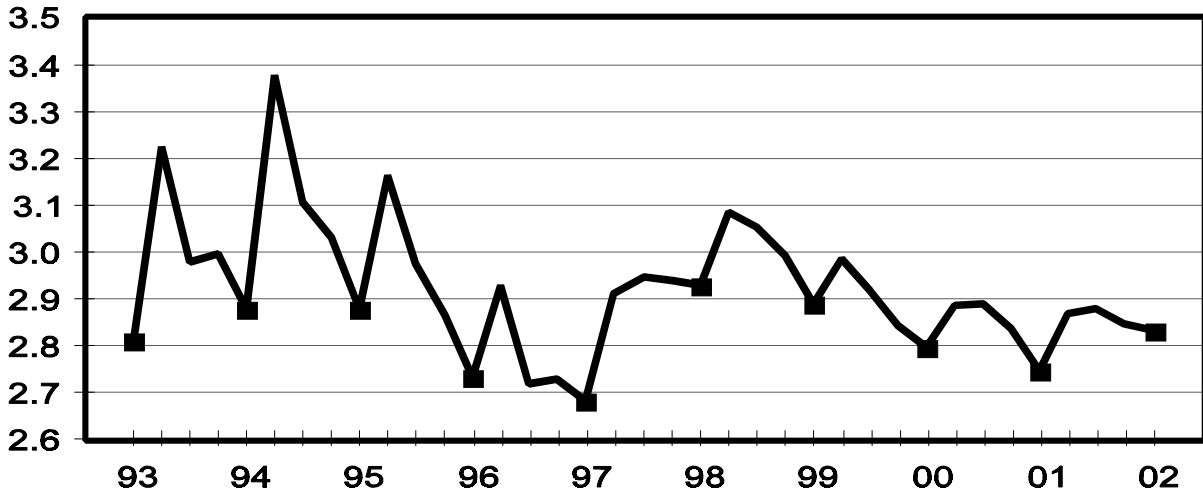
**Monthly Sows and Gilts: Inventory and Number Bred,  
United States December-November 2001-2002<sup>1</sup>**

Month	Inventory 1st of Month			Bred during Month		
	2001	2002		2001	2002	
		Number	as % of 2001		Number	as % of 2001
	<i>1,000 Head</i>	<i>1,000 Head</i>	<i>Percent</i>	<i>1,000 Head</i>	<i>1,000 Head</i>	<i>Percent</i>
Dec <sup>1</sup>	6,090	6,031	99	1,185	1,189	100
Jan	6,030	6,022	100	1,169	1,187	102
Feb	6,031	6,020	100	1,142	1,158	101
Mar	6,053	6,075	100	1,175		
Apr	5,987			1,170		
May	5,974			1,165		
Jun	6,001			1,197		
Jul	5,955			1,155		
Aug	5,955			1,133		
Sep	5,975			1,171		
Oct	5,990			1,197		
Nov	5,968			1,191		

<sup>1</sup> December preceding year.

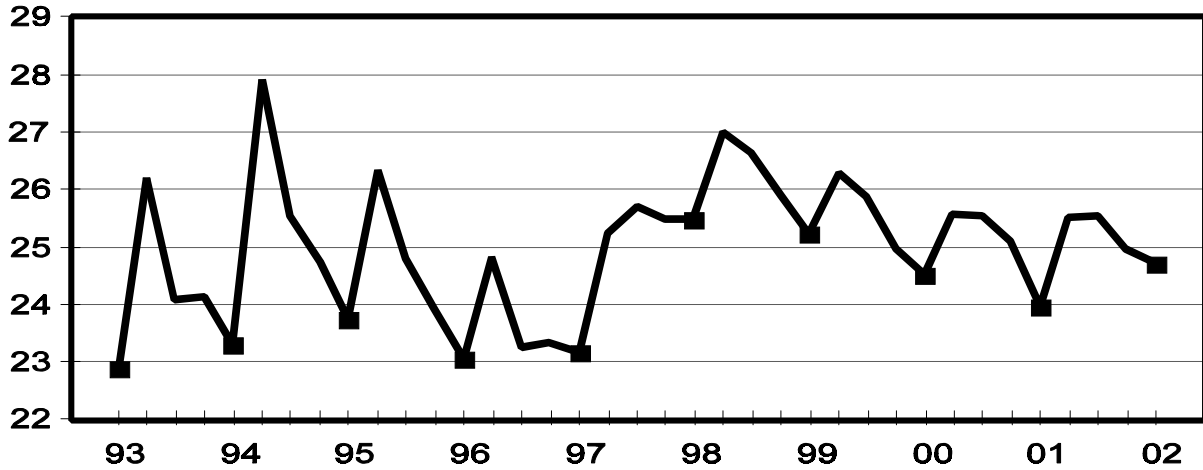
## U.S. Quarterly Sows Farrowed December - February

Million Head



## U.S. Quarterly Pig Crop December - February

Million Head



**Hogs and Pigs: Breeding, Market, and Total Inventory  
by State and United States, March 1, 2001-2002 <sup>1</sup>**

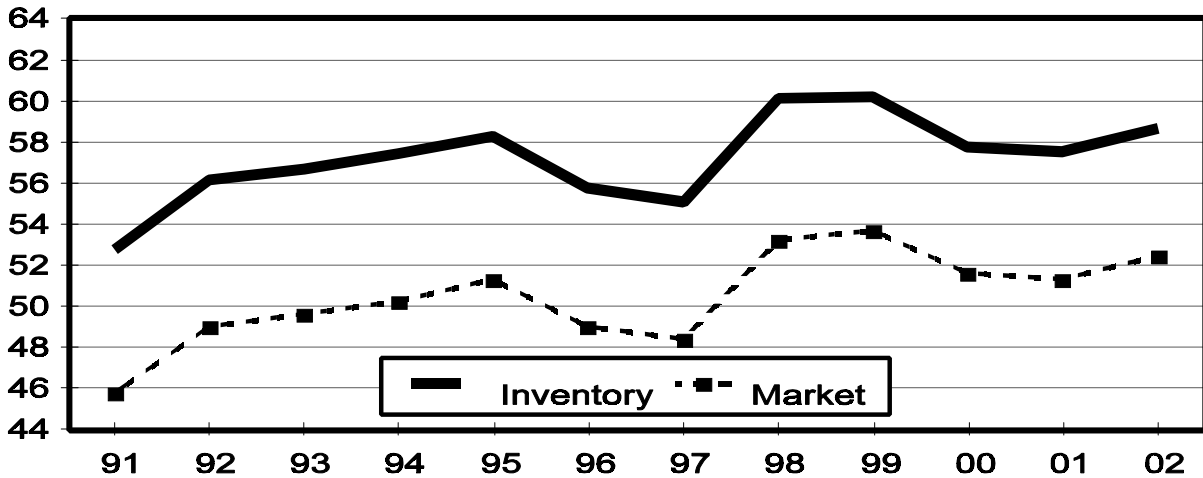
State	Breeding			Market			Total		
	2001	2002		2001	2002		2001	2002	
		Number	as % of 2001		Number	as % of 2001		Number	as % of 2001
	<i>1,000 Head</i>	<i>1,000 Head</i>	<i>Percent</i>	<i>1,000 Head</i>	<i>1,000 Head</i>	<i>Percent</i>	<i>1,000 Head</i>	<i>1,000 Head</i>	<i>Percent</i>
AR	105	105	100	545	485	89	650	590	91
CO	180	180	100	580	610	105	760	790	104
IL	440	450	102	3,610	3,700	102	4,050	4,150	102
IN	360	340	94	2,790	2,810	101	3,150	3,150	100
IA	1,120	1,120	100	13,280	13,780	104	14,400	14,900	103
KS	160	170	106	1,350	1,430	106	1,510	1,600	106
MI	120	120	100	780	840	108	900	960	107
MN	590	570	97	5,210	5,230	100	5,800	5,800	100
MO	380	370	97	2,520	2,580	102	2,900	2,950	102
NE	360	390	108	2,540	2,560	101	2,900	2,950	102
NC	1,000	1,000	100	8,300	8,600	104	9,300	9,600	103
OH	165	165	100	1,285	1,305	102	1,450	1,470	101
OK	340	330	97	1,900	1,960	103	2,240	2,290	102
PA	120	130	108	910	960	105	1,030	1,090	106
SD	135	150	111	1,135	1,120	99	1,270	1,270	100
TX	90	100	111	810	810	100	900	910	101
WI	80	60	75	510	440	86	590	500	85
Oth Sts <sup>2</sup>	487	486	100	3,237	3,241	100	3,724	3,728	100
US	6,232	6,236	100	51,292	52,461	102	57,524	58,698	102

<sup>1</sup> May not add due to rounding.

<sup>2</sup> Individual State estimates not available for the 33 other States.

## March 1 Hog Inventory & Market Hogs United States

Million Head





**Market Hogs and Pigs: Inventory Number by Weight Group,  
State, and United States, March 1, 2001-2002 <sup>1</sup>**

State	Under 60 Lbs.		60-119 Lbs.		120-179 Lbs.		180 Lbs. and Over	
	2001	2002	2001	2002	2001	2002	2001	2002
	<i>1,000 Head</i>	<i>1,000 Head</i>	<i>1,000 Head</i>	<i>1,000 Head</i>	<i>1,000 Head</i>	<i>1,000 Head</i>	<i>1,000 Head</i>	<i>1,000 Head</i>
AR	195	250	130	65	120	80	100	90
CO	310	330	75	95	85	70	110	115
IL	1,280	1,310	870	910	830	810	630	670
IN	1,010	1,010	670	700	560	570	550	530
IA	3,980	4,360	3,600	3,700	3,070	3,120	2,630	2,600
KS	460	490	275	270	245	280	370	390
MI	310	310	185	215	160	165	125	150
MN	2,040	2,080	1,310	1,320	1,090	1,060	770	770
MO	1,110	1,130	610	620	500	510	300	320
NE	990	1,040	650	660	510	490	390	370
NC	3,350	3,400	1,800	1,950	1,700	1,750	1,450	1,500
OH	540	545	305	310	280	290	160	160
OK	840	860	320	310	260	280	480	510
PA	335	345	240	255	185	200	150	160
SD	390	375	300	295	245	265	200	185
TX	265	265	170	175	160	165	215	205
WI	190	165	110	105	110	90	100	80
Oth Sts <sup>2</sup>	1,142	1,116	797	775	695	719	604	631
US	18,737	19,381	12,417	12,730	10,805	10,914	9,334	9,436

<sup>1</sup> Weight groups may not add to Market due to rounding.

<sup>2</sup> Individual State estimates not available for the 33 other States.

**Hogs and Pigs: Breeding, Market, and Total Inventory  
by State and United States, June 1, 2000-2001<sup>1</sup>**

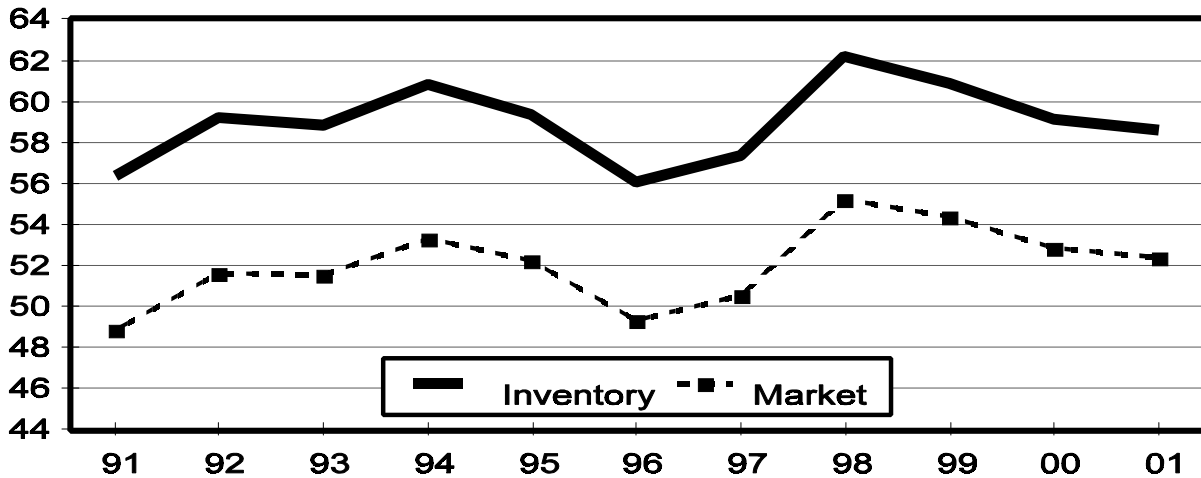
State	Breeding			Market			Total		
	2000	2001		2000	2001		2000	2001	
		Number	as % of 2000		Number	as % of 2000		Number	as % of 2000
	<i>1,000 Head</i>	<i>1,000 Head</i>	<i>Percent</i>	<i>1,000 Head</i>	<i>1,000 Head</i>	<i>Percent</i>	<i>1,000 Head</i>	<i>1,000 Head</i>	<i>Percent</i>
AR	110	105	95	580	545	94	690	650	94
CO	210	170	81	680	590	87	890	760	85
IL	430	420	98	3,720	3,680	99	4,150	4,100	99
IN	350	350	100	2,900	2,800	97	3,250	3,150	97
IA	1,160	1,120	97	14,240	13,780	97	15,400	14,900	97
KS	150	165	110	1,240	1,365	110	1,390	1,530	110
MI	110	110	100	880	810	92	990	920	93
MN	580	590	102	5,120	5,210	102	5,700	5,800	102
MO	380	390	103	2,620	2,660	102	3,000	3,050	102
NE	370	360	97	2,530	2,540	100	2,900	2,900	100
NC	1,000	1,000	100	8,600	8,700	101	9,600	9,700	101
OH	160	160	100	1,240	1,300	105	1,400	1,460	104
OK	340	330	97	1,930	1,860	96	2,270	2,190	96
PA	125	120	96	925	910	98	1,050	1,030	98
SD	125	140	112	1,105	1,130	102	1,230	1,270	103
TX	85	95	112	785	765	97	870	860	99
WI	65	75	115	515	495	96	580	570	98
Oth Sts <sup>2</sup>	484	486	100	3,274	3,277	100	3,757	3,763	100
US	6,234	6,186	99	52,884	52,417	99	59,117	58,603	99

<sup>1</sup> May not add due to rounding.

<sup>2</sup> Individual State estimates not available for the 33 other States.

## June 1 Hog Inventory & Market Hogs United States

Million Head



**Market Hogs and Pigs: Inventory Number by Weight Group,  
State, and United States, June 1, 2000-2001 <sup>1</sup>**

State	Under 60 Lbs.		60-119 Lbs.		120-179 Lbs.		180 Lbs. and Over	
	2000	2001	2000	2001	2000	2001	2000	2001
	<i>1,000 Head</i>	<i>1,000 Head</i>	<i>1,000 Head</i>	<i>1,000 Head</i>	<i>1,000 Head</i>	<i>1,000 Head</i>	<i>1,000 Head</i>	<i>1,000 Head</i>
AR	210	190	135	140	130	115	105	100
CO	390	335	90	65	90	75	110	115
IL	1,360	1,320	920	950	820	760	620	650
IN	1,140	1,040	670	680	570	540	520	540
IA	4,480	4,350	4,060	3,800	3,080	3,080	2,620	2,550
KS	500	475	245	295	235	240	260	355
MI	390	315	200	215	160	155	130	125
MN	2,060	2,140	1,250	1,300	1,020	1,050	790	720
MO	1,150	1,320	660	560	510	480	300	300
NE	1,010	1,050	640	650	500	490	380	350
NC	3,500	3,600	2,000	2,110	1,700	1,620	1,400	1,370
OH	520	530	290	325	270	280	160	165
OK	840	850	400	310	230	270	460	430
PA	340	360	250	235	195	175	140	140
SD	390	430	310	280	240	245	165	175
TX	230	270	200	150	160	150	195	195
WI	195	195	120	115	110	100	90	85
Oth Sts <sup>2</sup>	1,202	1,153	807	812	690	711	574	602
US	19,907	19,923	13,247	12,992	10,710	10,536	9,019	8,967

<sup>1</sup> Weight groups may not add to Market due to rounding.

<sup>2</sup> Individual State estimates not available for the 33 other States.

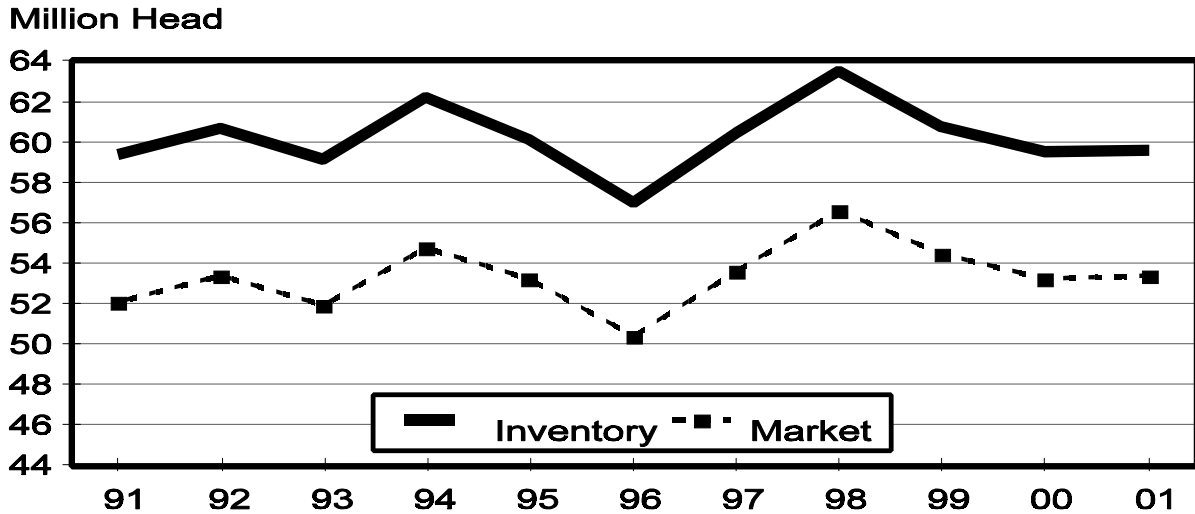
**Hogs and Pigs: Breeding, Market, and Total Inventory  
by State and United States, September 1, 2000-2001<sup>1</sup>**

State	Breeding			Market			Total		
	2000	2001		2000	2001		2000	2001	
		Number	as % of 2000		Number	as % of 2000		Number	as % of 2000
	<i>1,000 Head</i>	<i>1,000 Head</i>	<i>Percent</i>	<i>1,000 Head</i>	<i>1,000 Head</i>	<i>Percent</i>	<i>1,000 Head</i>	<i>1,000 Head</i>	<i>Percent</i>
AR	105	100	95	575	555	97	680	655	96
CO	205	175	85	685	595	87	890	770	87
IL	420	420	100	3,630	3,780	104	4,050	4,200	104
IN	360	330	92	2,940	2,820	96	3,300	3,150	95
IA	1,160	1,120	97	14,140	13,880	98	15,300	15,000	98
KS	155	165	106	1,375	1,435	104	1,530	1,600	105
MI	110	110	100	910	860	95	1,020	970	95
MN	580	590	102	5,020	5,310	106	5,600	5,900	105
MO	380	380	100	2,620	2,670	102	3,000	3,050	102
NE	380	360	95	2,620	2,540	97	3,000	2,900	97
NC	1,000	1,000	100	8,700	8,900	102	9,700	9,900	102
OH	160	160	100	1,260	1,310	104	1,420	1,470	104
OK	340	330	97	1,990	2,020	102	2,330	2,350	101
PA	115	125	109	925	945	102	1,040	1,070	103
SD	130	140	108	1,150	1,140	99	1,280	1,280	100
TX	85	95	112	845	785	93	930	880	95
WI	65	75	115	525	485	92	590	560	95
Oth Sts <sup>2</sup>	496	483	97	3,340	3,389	101	3,835	3,872	101
US	6,246	6,158	99	53,250	53,419	100	59,495	59,577	100

<sup>1</sup> May not add due to rounding.

<sup>2</sup> Individual State estimates not available for the 33 other States.

## September 1 Hog Inventory & Market Hogs United States



**Market Hogs and Pigs: Inventory Number by Weight Group,  
State, and United States, September 1, 2000-2001 <sup>1</sup>**

State	Under 60 Lbs.		60-119 Lbs.		120-179 Lbs.		180 Lbs. and Over	
	2000	2001	2000	2001	2000	2001	2000	2001
	<i>1,000 Head</i>	<i>1,000 Head</i>	<i>1,000 Head</i>	<i>1,000 Head</i>	<i>1,000 Head</i>	<i>1,000 Head</i>	<i>1,000 Head</i>	<i>1,000 Head</i>
AR	220	245	135	110	120	100	100	100
CO	400	330	80	80	80	75	125	110
IL	1,260	1,380	900	930	820	790	650	680
IN	1,130	1,050	710	700	570	550	530	520
IA	4,420	4,300	3,900	3,880	3,140	3,100	2,680	2,600
KS	540	470	280	290	255	275	300	400
MI	360	330	230	225	180	175	140	130
MN	2,080	2,190	1,220	1,320	950	1,060	770	740
MO	1,120	1,140	690	630	520	520	290	380
NE	1,100	980	650	670	490	510	380	380
NC	3,450	3,500	2,000	2,200	1,750	1,800	1,500	1,400
OH	550	545	285	325	255	270	170	170
OK	925	860	325	340	245	235	495	585
PA	345	365	240	250	190	180	150	150
SD	420	395	290	290	255	260	185	195
TX	240	285	175	180	180	145	250	175
WI	195	195	120	110	110	90	100	90
Oth Sts <sup>2</sup>	1,200	1,181	825	878	707	719	607	612
US	19,955	19,741	13,055	13,408	10,817	10,854	9,422	9,417

<sup>1</sup> Weight groups may not add to Market due to rounding.

<sup>2</sup> Individual State estimates not available for the 33 other States.

**Hogs and Pigs: Breeding, Market, and Total Inventory  
by State and United States, December 1, 2000-2001<sup>1</sup>**

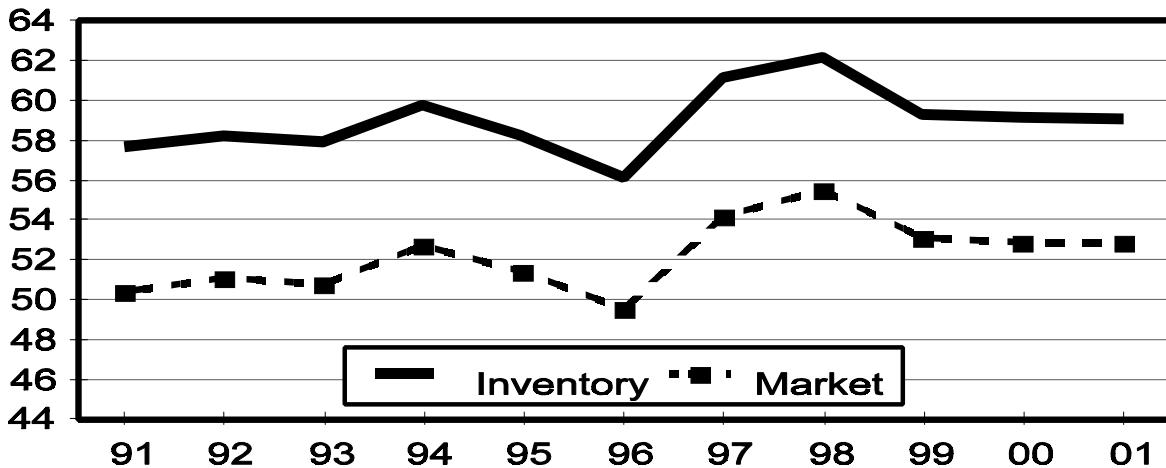
State	Breeding			Market			Total		
	2000	2001		2000	2001		2000	2001	
		Number	as % of 2000		Number	as % of 2000		Number	as % of 2000
	<i>1,000 Head</i>	<i>1,000 Head</i>	<i>Percent</i>	<i>1,000 Head</i>	<i>1,000 Head</i>	<i>Percent</i>	<i>1,000 Head</i>	<i>1,000 Head</i>	<i>Percent</i>
AR	110	100	91	575	470	82	685	570	83
CO	190	175	92	650	605	93	840	780	93
IL	450	450	100	3,700	3,800	103	4,150	4,250	102
IN	375	340	91	2,975	2,810	94	3,350	3,150	94
IA	1,120	1,130	101	13,980	13,970	100	15,100	15,100	100
KS	160	170	106	1,360	1,390	102	1,520	1,560	103
MI	110	110	100	840	850	101	950	960	101
MN	600	570	95	5,200	5,130	99	5,800	5,700	98
MO	380	380	100	2,520	2,620	104	2,900	3,000	103
NE	360	370	103	2,690	2,530	94	3,050	2,900	95
NC	1,000	1,000	100	8,300	8,600	104	9,300	9,600	103
OH	170	160	94	1,320	1,260	95	1,490	1,420	95
OK	340	340	100	1,970	2,130	108	2,310	2,470	107
PA	120	130	108	910	930	102	1,030	1,060	103
SD	140	145	104	1,180	1,135	96	1,320	1,280	97
TX	85	100	118	835	800	96	920	900	98
WI	75	65	87	535	475	89	610	540	89
Oth Sts <sup>2</sup>	485	474	98	3,328	3,359	101	3,813	3,834	101
US	6,270	6,209	99	52,868	52,864	100	59,138	59,074	100

<sup>1</sup> May not add due to rounding.

<sup>2</sup> Individual State estimates not available for the 33 other States.

## December 1 Hog Inventory & Market Hogs United States

Million Head



**Market Hogs and Pigs: Inventory Number by Weight Group,  
State, and United States, December 1, 2000-2001<sup>1</sup>**

State	Under 60 Lbs.		60-119 Lbs.		120-179 Lbs.		180 Lbs. and Over	
	2000	2001	2000	2001	2000	2001	2000	2001
	<i>1,000 Head</i>	<i>1,000 Head</i>	<i>1,000 Head</i>	<i>1,000 Head</i>	<i>1,000 Head</i>	<i>1,000 Head</i>	<i>1,000 Head</i>	<i>1,000 Head</i>
AR	210	220	135	75	125	75	105	100
CO	370	335	80	85	85	75	115	110
IL	1,310	1,380	920	920	810	830	660	670
IN	1,110	1,000	725	700	590	580	550	530
IA	4,360	4,310	3,790	3,800	3,090	3,060	2,740	2,800
KS	495	475	285	285	210	250	370	380
MI	320	310	200	210	170	170	150	160
MN	2,110	2,040	1,270	1,240	1,040	1,030	780	820
MO	1,010	1,140	680	600	510	510	320	370
NE	1,010	1,020	700	620	550	500	430	390
NC	3,400	3,350	1,800	1,950	1,650	1,750	1,450	1,550
OH	540	510	320	310	280	265	180	175
OK	880	840	355	350	245	310	490	630
PA	330	360	235	240	190	180	155	150
SD	430	400	290	290	260	250	200	195
TX	215	255	175	145	200	165	245	235
WI	190	180	125	105	110	100	110	90
Oth Sts <sup>2</sup>	1,131	1,179	848	825	731	692	619	663
US	19,421	19,304	12,933	12,750	10,846	10,792	9,669	10,018

<sup>1</sup> Weight groups may not add to Market due to rounding.

<sup>2</sup> Individual State estimates not available for the 33 other States.

**Farrowings: Number of Sows, Pigs per Litter, and Pig Crop  
by State and United States, December-February 2001-2002<sup>1 2</sup>**

State	Sows Farrowing			Pigs per Litter		Pig Crop <sup>3</sup>		
	2001	2002		2001	2002	2001	2002	
		Number	as % of 2001				Number	as % of 2001
	<i>1,000 Head</i>	<i>1,000 Head</i>	<i>Percent</i>	<i>Number</i>	<i>Number</i>	<i>1,000 Head</i>	<i>1,000 Head</i>	<i>Percent</i>
AR	53	52	98	8.90	9.20	472	478	101
CO	76	79	104	8.50	8.40	646	664	103
IL	195	210	108	8.50	8.55	1,658	1,796	108
IN	155	150	97	8.80	8.65	1,364	1,298	95
IA	430	420	98	8.40	8.50	3,612	3,570	99
KS	73	79	108	8.55	8.40	624	664	106
MI	46	50	109	8.75	9.00	403	450	112
MN	260	260	100	8.95	8.80	2,327	2,288	98
MO	170	170	100	8.75	8.85	1,488	1,505	101
NE	140	170	121	8.80	8.80	1,232	1,496	121
NC	530	540	102	8.85	8.95	4,691	4,833	103
OH	73	74	101	8.50	8.90	621	659	106
OK	165	170	103	9.25	8.75	1,526	1,488	98
PA	51	53	104	8.80	8.80	449	466	104
SD	62	70	113	8.80	8.90	546	623	114
TX	37	43	116	8.90	9.00	329	387	118
WI	34	28	82	8.25	8.45	281	237	84
Oth Sts <sup>4</sup>	198	214	108	8.55	8.45	1,694	1,809	107
US	2,748	2,832	103	8.72	8.73	23,963	24,711	103

<sup>1</sup> May not add due to rounding.

<sup>2</sup> December preceding year.

<sup>3</sup> Number of pigs born December-February on hand March 1, or had been sold.

<sup>4</sup> Individual State estimates not available for the 33 States.



**Farrowings: Number of Sows, Pigs per Litter, and Pig Crop  
by State and United States, March-May 2000-2002 <sup>1</sup>**

State	Sows Farrowing				Pigs per Litter		Pig Crop <sup>2</sup>		
	2000	2001	2002 <sup>3</sup>		2000	2001	2000	2001	
			Number	as % of 2001				Number	as % of 2000
	<i>1,000 Head</i>	<i>1,000 Head</i>	<i>1,000 Head</i>	<i>Percent</i>	<i>Number</i>	<i>Number</i>	<i>1,000 Head</i>	<i>1,000 Head</i>	<i>1,000 Head</i>
AR	55	54	54	100	8.50	9.00	468	486	104
CO	88	79	81	103	8.40	8.30	739	656	89
IL	210	210	215	102	8.75	8.85	1,838	1,859	101
IN	145	155	150	97	8.85	8.90	1,283	1,380	108
IA	490	450	450	100	8.90	8.75	4,361	3,938	90
KS	76	77	82	106	8.90	8.65	676	666	99
MI	50	50	55	110	9.00	8.90	450	445	99
MN	260	270	265	98	9.00	9.05	2,340	2,444	104
MO	180	185	170	92	8.80	8.90	1,584	1,647	104
NE	155	160	175	109	8.85	8.80	1,372	1,408	103
NC	540	540	550	102	8.90	9.00	4,806	4,860	101
OH	75	73	75	103	8.90	8.70	668	635	95
OK	165	165	165	100	8.90	9.35	1,469	1,543	105
PA	48	52	53	102	8.80	8.90	422	463	110
SD	62	66	71	108	8.90	8.90	552	587	106
TX	37	40	43	108	9.50	8.80	352	352	100
WI	30	33	26	79	8.85	8.60	266	284	107
Oth Sts <sup>4</sup>	219	211	216	102	8.77	8.78	1,919	1,856	97
US	2,885	2,870	2,896	101	8.86	8.89	25,565	25,509	100

<sup>1</sup> May not add due to rounding.

<sup>2</sup> Number of pigs born March-May that were still on hand June 1, or had been sold.

<sup>3</sup> Intentions.

<sup>4</sup> Individual State estimates not available for the 33 other States.

**Farrowings: Number of Sows, Pigs per Litter, and Pig Crop  
by State and United States, June-August 2000-2002 <sup>1</sup>**

State	Sows Farrowing				Pigs per Litter		Pig Crop <sup>2</sup>		
	2000	2001	2002 <sup>3</sup>		2000	2001	2000	2001	
			Number	as % of 2001				Number	as % of 2000
	<i>1,000 Head</i>	<i>1,000 Head</i>	<i>1,000 Head</i>	<i>Percent</i>	<i>Number</i>	<i>Number</i>	<i>1,000 Head</i>	<i>1,000 Head</i>	<i>Percent</i>
AR	55	57	51	89	9.25	9.30	509	530	104
CO	90	79	81	103	8.40	8.45	756	668	88
IL	200	210	215	102	8.70	8.65	1,740	1,817	104
IN	155	150	155	103	8.75	8.90	1,356	1,335	98
IA	470	440	450	102	8.80	8.60	4,136	3,784	91
KS	84	78	80	103	8.80	8.70	739	679	92
MI	50	52	54	104	8.90	9.10	445	473	106
MN	260	265	265	100	9.10	9.00	2,366	2,385	101
MO	180	180	170	94	8.80	8.90	1,584	1,602	101
NE	160	155	180	116	9.00	8.70	1,440	1,349	94
NC	540	550	550	100	8.80	9.10	4,752	5,005	105
OH	75	75	75	100	8.85	8.90	664	668	101
OK	170	175	165	94	8.90	9.40	1,513	1,645	109
PA	49	54	53	98	8.70	8.80	426	475	112
SD	62	66	72	109	9.00	8.85	558	584	105
TX	43	44	43	98	9.40	8.70	404	383	95
WI	30	36	26	72	8.90	8.15	267	293	110
Oth Sts <sup>4</sup>	216	212	211	100	8.76	8.79	1,893	1,864	98
US	2,889	2,878	2,896	101	8.84	8.87	25,548	25,539	100

<sup>1</sup> May not add due to rounding.

<sup>2</sup> Number of pigs born June-August on hand September 1, or had been sold.

<sup>3</sup> Intentions.

<sup>4</sup> Individual State estimates not available for the 33 States.

**Farrowings: Number of Sows, Pigs per Litter, and Pig Crop  
by State and United States, September-November 2000-2001<sup>1</sup>**

State	Sows Farrowing			Pigs per Litter		Pig Crop <sup>2</sup>		
	2000	2001		2000	2001	2000	2001	
		Number	as % of 2000				Number	as % of 2000
	<i>1,000 Head</i>	<i>1,000 Head</i>	<i>Percent</i>	<i>Number</i>	<i>Number</i>	<i>1,000 Head</i>	<i>1,000 Head</i>	<i>Percent</i>
AR	55	50	91	9.00	9.50	495	475	96
CO	86	81	94	8.50	8.50	731	689	94
IL	210	215	102	8.70	8.55	1,827	1,838	101
IN	165	150	91	8.90	8.65	1,469	1,298	88
IA	440	450	102	8.85	8.60	3,894	3,870	99
KS	81	80	99	8.60	8.50	697	680	98
MI	48	45	94	9.05	9.10	434	410	94
MN	270	260	96	8.90	8.95	2,403	2,327	97
MO	175	175	100	8.75	8.80	1,531	1,540	101
NE	150	160	107	8.75	8.65	1,313	1,384	105
NC	530	530	100	8.85	8.95	4,691	4,744	101
OH	74	73	99	8.80	8.70	651	635	98
OK	165	170	103	9.35	9.05	1,543	1,539	100
PA	51	55	108	8.70	8.80	444	484	109
SD	65	70	108	8.90	8.90	579	623	108
TX	38	40	105	9.40	8.90	357	356	100
WI	33	29	88	8.55	8.40	282	244	87
Oth Sts <sup>3</sup>	202	213	105	8.78	8.63	1,771	1,836	104
US	2,838	2,846	100	8.85	8.78	25,112	24,972	99

<sup>1</sup> May not add due to rounding.

<sup>2</sup> Number of pigs born September-November that were still on hand December 1 or had been sold.

<sup>3</sup> Individual State estimates not available for the 33 other States.

## Reliability of March 1 Hogs and Pigs Estimates

**Survey Procedures:** A random sample of 12,500 U.S. producers was surveyed to provide data for these estimates. Survey procedures ensured that all hog and pig producers, regardless of size, had a chance to be included in the survey. Large producers were sampled more heavily than small operations. Data were collected from about 10,100 operations, 81 percent of the total sample, during the first-half of March by mail, telephone, and face-to-face personal interviews. Regardless of when operations responded, they were asked to report inventories as of March 1.

**Estimation Procedures:** These hogs and pigs estimates were prepared by the Agricultural Statistics Board after reviewing recommendations and analysis submitted by each State office. National and State survey data were reviewed for reasonableness with each other and with estimates from past years using a balance sheet. The balance sheet begins with the previous inventory estimate, adds to it estimates of births and imports, and subtracts estimates of slaughter, exports, and deaths. This indicated ending inventory level is compared to the Agricultural Statistics Board estimate for reasonableness.

**Revision Policy:** Revisions to previous estimates are made to improve quarter to quarter relationships. Estimates for the previous four quarters are subject to revision when current estimates are made. In December, estimates for all quarters of the current and previous year are reviewed. The reviews are primarily based on hog check-off receipts and slaughter. Estimates will also be reviewed after data from the Department of Agriculture five-year Census of Agriculture are available. No revisions will be made after that date.

**Reliability:** Since all operations raising hogs are not included in the sample, survey estimates are subject to sampling variability. Survey results are also subject to non-sampling errors such as omissions, duplication, and mistakes in reporting, recording, and processing the data. The affects of these errors cannot be measured directly. They are minimized through rigid quality controls in the data collection process and through a careful review of all reported data for consistency and reasonableness.

To assist users in evaluating the reliability of the estimates in this report, the "Root Mean Square Error" is shown for selected items in the following table. The "**Root Mean Square Error**" is a statistical measure based on past performance and is computed using the difference between first and final estimates. The "Root Mean Square Error" for hog inventory estimates over the past 20 quarters is 1.1 percent. This means that chances are 2 out of 3 that the final estimate will not be above or below the current estimate of 58.7 million head by more than 1.1 percent. Chances are 9 out of 10 that the difference will not exceed 1.8 percent.

**Reliability of March 1 Hog Estimates <sup>1</sup>**

Item	Root Mean Square Error	90% Confidence Level		Difference Between First and Latest Estimates			Quarters	
				Average	Smallest	Largest	First Above Latest	First Below Latest
				<i>1,000 Head</i>	<i>1,000 Head</i>	<i>1,000 Head</i>	<i>Number</i>	<i>Number</i>
All Hogs & Pigs	1.1	1.8	1,057	511	40	1,238	9	11
Pig Crop	1.3	2.3	568	246	0	933	12	8
Expected Farrowings								
Next Quarter	1.8	3.2	93	37	1	158	11	9
Following	2.6	4.4	127	62	6	146	10	10

<sup>1</sup> Based on quarterly records for the past 20 quarters.

## Index

**Page**

Farrowings: Number of Sows, Pig Crop, and Pigs per Litter, United States . . . . .	5
Farrowings: Number of Sows, Pigs per Litter, and Pig Crop, by State and United States, December-February . . . . .	16
Farrowings: Number of Sows, Pigs per Litter, and Pig Crop, by State and United States, June-August . . . . .	18
Farrowings: Number of Sows, Pigs per Litter, and Pig Crop, by State and United States, March-May . . . . .	17
Farrowings: Number of Sows, Pigs per Litter, and Pig Crop, by State and United States, September-November . . . . .	19
Hogs and Pigs: Breeding, Market, and Total Inventory by State and United States, December 1 . . . . .	14
Hogs and Pigs: Breeding, Market, and Total Inventory by State and United States, June 1 . . . . .	10
Hogs and Pigs: Breeding, Market, and Total Inventory by State and United States, March 1 . . . . .	8
Hogs and Pigs: Breeding, Market, and Total Inventory by State and United States, September 1 . . . . .	12
Hogs and Pigs: Inventory Number by Class, Weight Group, and Quarter, United States . . . . .	4
Market Hogs and Pigs: Inventory Number by Weight Group, State, and United States, December 1 . . . . .	15
Market Hogs and Pigs: Inventory Number by Weight Group, State, and United States, June 1 . . . . .	11
Market Hogs and Pigs: Inventory Number by Weight Group, State, and United States, March 1 . . . . .	9
Market Hogs and Pigs: Inventory Number by Weight Group, State, and United States, September 1 . . . . .	13
Monthly Farrowings: Number of Sows, Pigs per Litter, and Pig Crop, United States, December-November . . . . .	6
Monthly Sows and Gilts: Inventory and Number Bred, United States, December-November . . . . .	6
Pigs per Litter: By Size of Operation, United States . . . . .	5
Reliability of Hogs and Pigs Estimates . . . . .	20

The next "Monthly Hogs and Pigs" report will be released at 3 p.m. ET on April 26, 2002.

The next "Quarterly Hogs and Pigs" report will be released at 3 p.m. ET on June 28, 2002.

The United States Department of Agriculture (USDA) prohibits discrimination in all its programs on the basis of race, color, national origin, gender, religion, age, disability, political beliefs, sexual orientation, and marital or family status. (Not all prohibited bases apply to all programs.) Persons with disabilities who require alternative means for communication of program information (braille, large print, audiotape, etc.) should contact the USDA's TARGET Center at 202-720-2600 (voice and TDD).

To file a complaint of discrimination, write USDA, Director, Office of Civil Rights, Room 326-W, Whitten Building, 1400 Independence Avenue, SW, Washington, D.C., 20250-9410, or call 202-720-5964 (voice or TDD). USDA is an equal opportunity provider and employer.

## **ACCESS TO REPORTS!!**

---

For your convenience, there are several ways to obtain NASS reports, data products, and services:

### **INTERNET ACCESS**

All NASS reports are available free of charge on the worldwide Internet. For access, connect to the Internet and go to the NASS Home Page at: <http://www.usda.gov/nass/>. Select "Today's Reports" or Publications and then Reports by Calendar or Publications and then Search, by Title or Subject.

### **E-MAIL SUBSCRIPTION**

There are two options for subscribing via e-mail. All NASS reports are available by subscription free of charge direct to your e-mail address. 1) Starting with the NASS Home Page at <http://www.usda.gov/nass/>, click on **Publications**, then click on the **Subscribe by E-mail** button which takes you to the page describing e-mail delivery of reports. Finally, click on **Go to the Subscription Page** and follow the instructions. 2) If you do NOT have Internet access, send an e-mail message to: [usda-reports@usda.mannlib.cornell.edu](mailto:usda-reports@usda.mannlib.cornell.edu). In the body of the message type the word: **list**.

### **AUTOFAX ACCESS**

NASSFax service is available for some reports from your fax machine. Please call 202-720-2000, using the handset attached to your fax. Respond to the voice prompts. Document 0411 is a list of available reports.

-----

### **PRINTED REPORTS OR DATA PRODUCTS**

**CALL OUR TOLL-FREE ORDER DESK: 800-999-6779 (U.S. and Canada)**

**Other areas, please call 703-605-6220                      FAX: 703-605-6900**

**(Visa, MasterCard, check, or money order acceptable for payment.)**

-----

### **ASSISTANCE**

For **assistance** with general agricultural statistics or further information about NASS or its products or services, contact the **Agricultural Statistics Hotline** at **800-727-9540**, 7:30 a.m. to 4:00 p.m. ET, or e-mail: [nass@nass.usda.gov](mailto:nass@nass.usda.gov).

---