

Released June 28, 2002, by the National Agricultural Statistics Service (NASS), Agricultural Statistics Board, U.S. Department of Agriculture. For information on "Quarterly Hogs and Pigs" call Rodger Ott at 202-720-3106, office hours 7:00 a.m. to 4:00 p.m. ET.

U.S. Hog Inventory Up 2 Percent

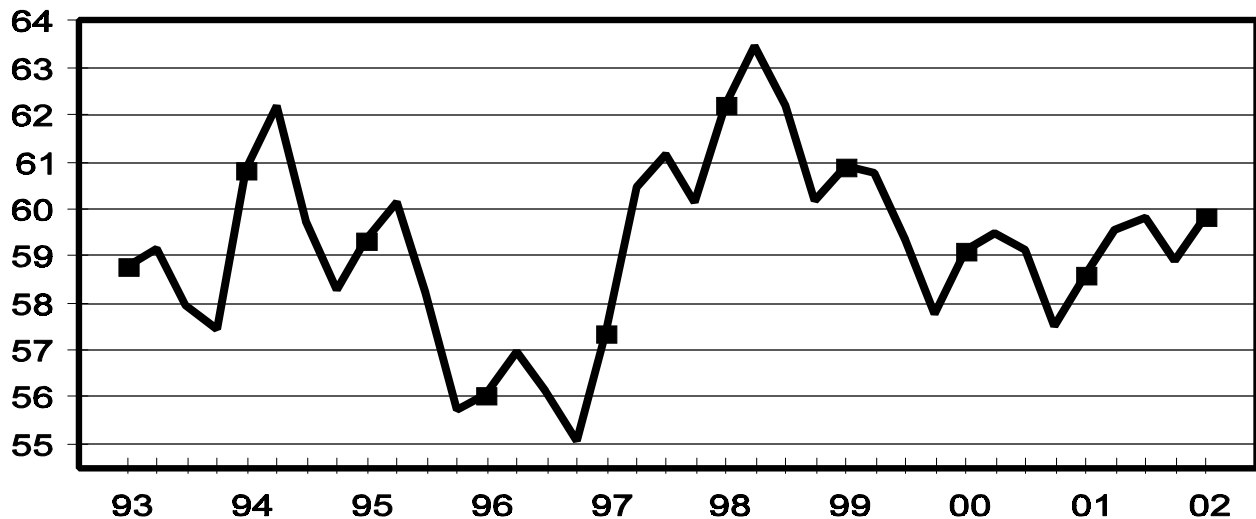
U.S. inventory of all hogs and pigs on June 1, 2002, was 59.8 million head. This was 2 percent above both June 2001, and March 1, 2002.

Breeding inventory, at 6.21 million head, was up slightly from June 1, 2001, but down slightly from last quarter. Market hog inventory, at 53.6 million head, was 2 percent above both last year and last quarter.

The March-May 2002 U.S. pig crop, at 25.9 million head, was 1 percent more than both 2001, and 2000. Sows farrowing during this period totaled 2.93 million head, 2 percent above last year. The sows farrowed during this quarter represented 47 percent of the breeding herd. The average pigs per litter was 8.81 pigs saved per litter for the March-May 2002 period, compared to 8.89 pigs last year. Pigs saved per litter by size of operation ranged from 7.70 for operations with 1-99 hogs to 8.90 for operations with more than 5,000 hogs and pigs.

U.S. Quarterly Hogs and Pigs Inventory June 1

Million Head



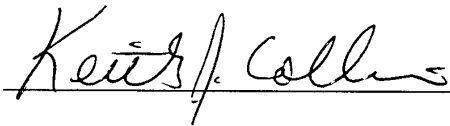
U.S. hog producers intend to have 2.93 million sows farrow during the June-August 2002 quarter, 2 percent above the actual farrowings during the same period in 2001, and 1 percent above 2000. Intended farrowings for September-November 2002, at 2.92 million sows, are 1 percent above the same period in 2001, and up 3 percent from 2000.

The total number of hogs under contract, owned by operations with over 5,000 head, but raised by contractees, accounted for 32 percent of the total U.S. hog inventory, down from 35 percent last year.

Revisions

All inventory and pig crop estimates for June 2001 through March 2002 were reviewed using final pig crop, official slaughter, death loss, import, and export data in U.S. level balance sheets. Based on the findings of this review, adjustments of less than one half percent were made to the inventory level for September 1, 2001 and March 1, 2002, and one percent to the inventory level for December 1, 2001. An adjustment of two percent was made to the September-November 2001 pig crop.

This report was approved on June 28, 2002.



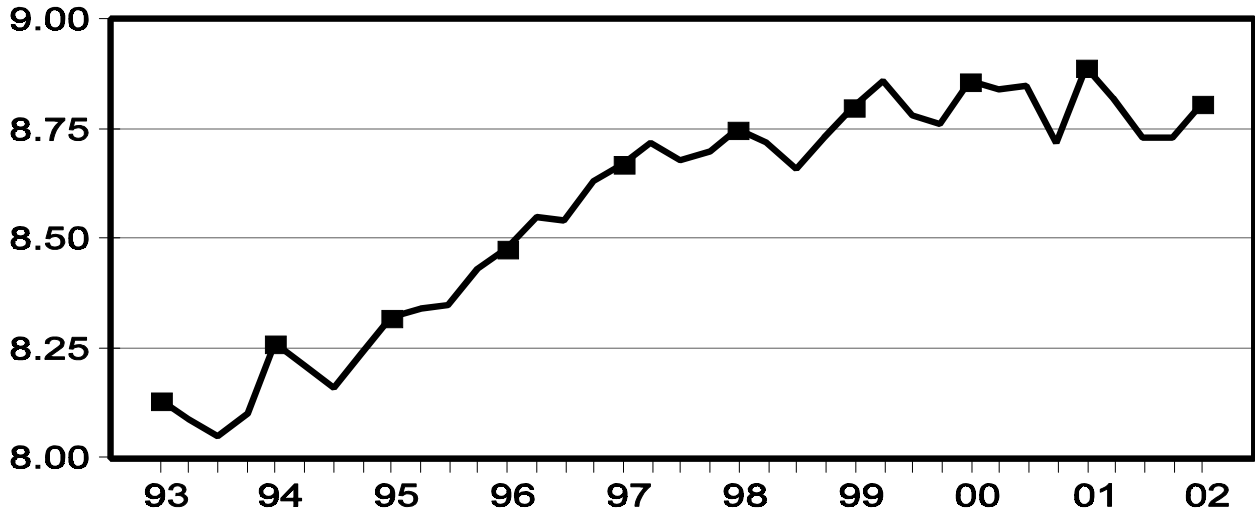
Acting Secretary of
Agriculture
Keith J. Collins



Agricultural Statistics Board
Chairperson
Frederic A. Vogel

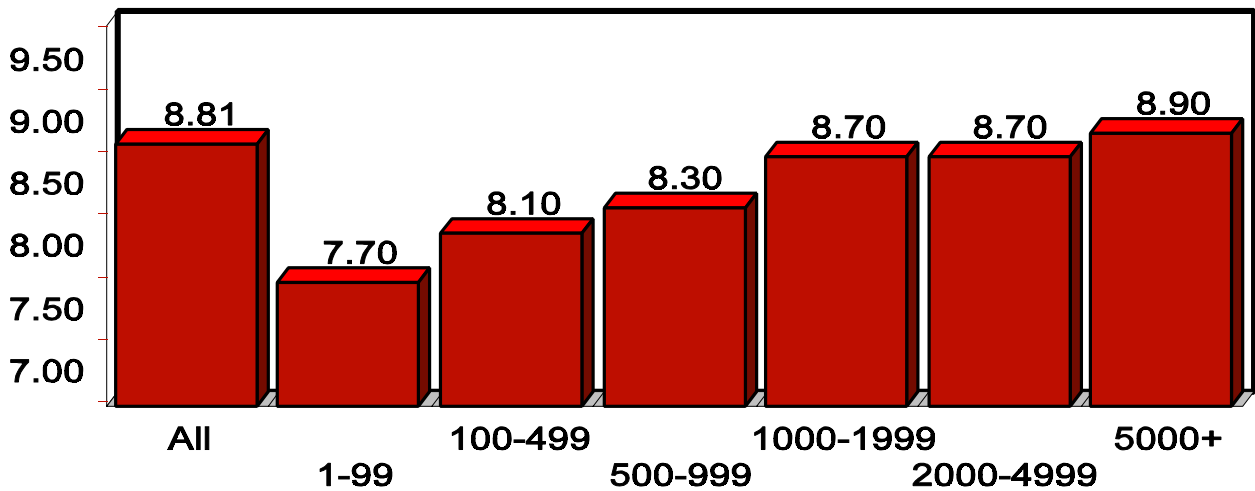
U.S. Quarterly Litter Rate March - May

Number Head



U.S. Pigs per Litter By Size of Operation, March - May 2002

Number Head



**Hogs and Pigs: Inventory Number by Class, Weight Group,
and Quarter, United States, 2000-2002¹**

Item	2000	2001	2002	2002 as % of	
				2000	2001
	<i>1,000 Head</i>	<i>1,000 Head</i>	<i>1,000 Head</i>	<i>Percent</i>	<i>Percent</i>
March 1 Inventory					
All Hogs and Pigs	57,782	57,524	58,898	102	102
Kept for Breeding	6,190	6,232	6,236	101	100
Market	51,593	51,292	52,661	102	103
Market Hogs and Pigs by Weight Groups					
Under 60 Pounds	19,217	18,737	19,381	101	103
60-119 Pounds	12,409	12,417	12,731	103	103
120-179 Pounds	10,552	10,805	11,172	106	103
180 Pounds and Over	9,414	9,334	9,377	100	100
June 1 Inventory					
All Hogs and Pigs	59,117	58,603	59,837	101	102
Kept for Breeding	6,234	6,186	6,209	100	100
Market	52,884	52,417	53,627	101	102
Market Hogs and Pigs by Weight Groups					
Under 60 Pounds	19,907	19,923	20,140	101	101
60-119 Pounds	13,247	12,992	13,109	99	101
120-179 Pounds	10,710	10,536	10,958	102	104
180 Pounds and Over	9,019	8,967	9,420	104	105
September 1 Inventory					
All Hogs and Pigs	59,495	59,777			
Kept for Breeding	6,246	6,158			
Market	53,250	53,619			
Market Hogs and Pigs by Weight Groups					
Under 60 Pounds	19,955	19,911			
60-119 Pounds	13,055	13,438			
120-179 Pounds	10,817	10,854			
180 Pounds and Over	9,422	9,417			
December 1 Inventory					
All Hogs and Pigs	59,138	59,804			
Kept for Breeding	6,270	6,209			
Market	52,868	53,594			
Market Hogs and Pigs by Weight Groups					
Under 60 Pounds	19,421	19,908			
60-119 Pounds	12,933	12,924			
120-179 Pounds	10,846	10,744			
180 Pounds and Over	9,669	10,018			

¹ May not add due to rounding.

**Farrowings: Number of Sows, Pig Crop, and Pigs per Litter,
United States, 2000-2002 ¹**

Item	2000	2001	2002	2002 as % of	
				2000	2001
	<i>1,000 Head</i>	<i>1,000 Head</i>	<i>1,000 Head</i>	<i>Percent</i>	<i>Percent</i>
Sows Farrowing					
Dec-Feb ²	2,798	2,748	2,832	101	103
Mar-May	2,885	2,870	2,933	102	102
Dec-May ²	5,683	5,619	5,765	101	103
Jun-Aug ³	2,889	2,878	2,930	101	102
Sep-Nov ³	2,838	2,889	2,915	103	101
Jun-Nov ³	5,727	5,767	5,845	102	101
Pig Crop					
Dec-Feb ²	24,522	23,963	24,711	101	103
Mar-May	25,565	25,509	25,851	101	101
Dec-May ²	50,087	49,472	50,561	101	102
Jun-Aug	25,548	25,539			
Sep-Nov	25,112	25,492			
Jun-Nov	50,660	51,031			
	<i>Number</i>	<i>Number</i>	<i>Number</i>	<i>Percent</i>	<i>Percent</i>
Pigs per Litter					
Dec-Feb ²	8.76	8.72	8.73	100	100
Mar-May	8.86	8.89	8.81	99	99
Dec-May ²	8.81	8.81	8.77	100	100
Jun-Aug	8.84	8.87			
Sep-Nov	8.85	8.82			
Jun-Nov	8.85	8.85			

¹ May not add due to rounding.

² December preceding year.

³ Intentions for 2002.

Pigs per Litter: By Size of Operation, United States, 2001-2002

Pig Crop	Pigs per Litter on Operations Having					
	1-99 Head	100-499 Head	500-999 Head	1,000-1,999 Head	2,000-4,999 Head	5,000+ Head
	<i>Number</i>	<i>Number</i>	<i>Number</i>	<i>Number</i>	<i>Number</i>	<i>Number</i>
2001						
Dec-Feb ¹	7.50	7.80	8.10	8.50	8.60	8.90
Mar-May	7.60	8.20	8.40	8.60	8.90	9.00
Jun-Aug	7.40	7.90	8.20	8.70	8.90	9.00
Sep-Nov	7.50	8.10	8.20	8.70	8.80	9.00
2002						
Dec-Feb ¹	7.30	7.80	8.30	8.60	8.60	8.80
Mar-May	7.70	8.10	8.30	8.70	8.70	8.90

¹ December preceding year.

**Monthly Farrowings: Number of Sows, Pigs per Litter, and Pig Crop,
United States, December-November 2001-2002^{1 2}**

Month	Sows Farrowing		Pigs per Litter		Pig Crop	
	2001	2002	2001	2002	2001	2002
	<i>1,000 Head</i>	<i>1,000 Head</i>	<i>Number</i>	<i>Number</i>	<i>1,000 Head</i>	<i>1,000 Head</i>
Dec ¹	901	924	8.66	8.66	7,803	8,005
Jan	906	943	8.71	8.71	7,887	8,214
Feb	941	965	8.79	8.80	8,273	8,492
Mar	959	978	8.87	8.80	8,503	8,605
Apr	953	973	8.90	8.83	8,481	8,595
May	958	982	8.90	8.81	8,525	8,651
Jun	963		8.85		8,526	
Jul	961		8.87		8,522	
Aug	954		8.90		8,491	
Sep	966		8.78		8,481	
Oct	963		8.85		8,523	
Nov	960		8.84		8,488	
Total	11,385		8.83		100,503	

¹ December preceding year.

² Monthly values may not add to quarterly or annual totals due to rounding.

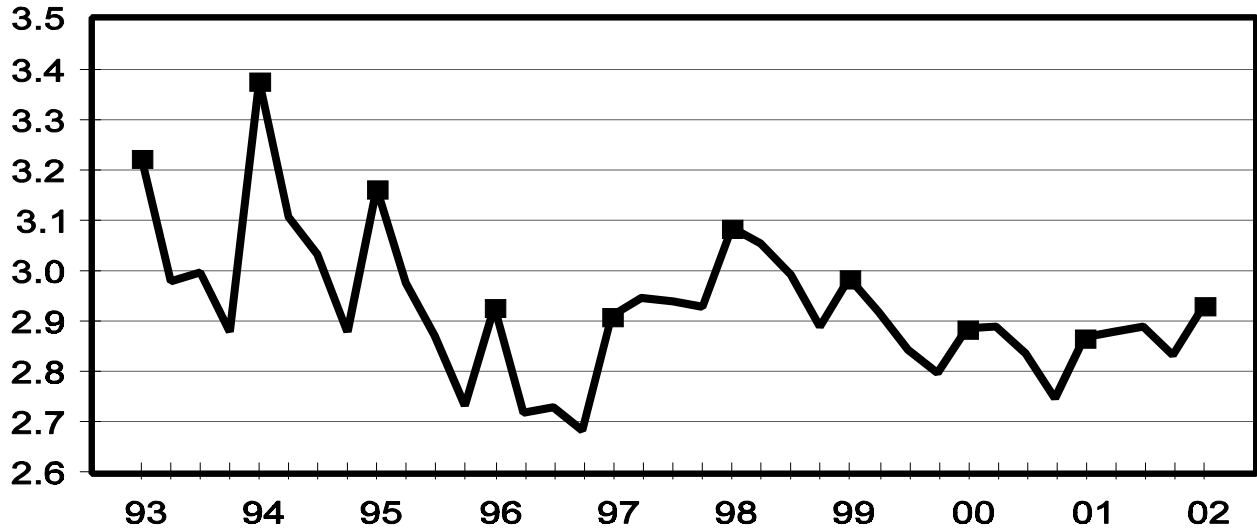
**Monthly Sows and Gilts: Inventory and Number Bred,
United States, December-November 2001-2002¹**

Month	Inventory 1st of Month			Bred during Month		
	2001	2002		2001	2002	
		Number	as % of 2001		Number	as % of 2001
	<i>1,000 Head</i>	<i>1,000 Head</i>	<i>Percent</i>	<i>1,000 Head</i>	<i>1,000 Head</i>	<i>Percent</i>
Dec ¹	6,090	6,031	99	1,185	1,189	100
Jan	6,030	6,022	100	1,169	1,190	102
Feb	6,031	6,020	100	1,142	1,158	101
Mar	6,053	6,075	100	1,175	1,181	101
Apr	5,987	5,980	100	1,170	1,176	101
May	5,974	5,985	100	1,165	1,190	102
Jun	6,001	6,030	100	1,197		
Jul	5,955			1,155		
Aug	5,955			1,133		
Sep	5,975			1,171		
Oct	5,990			1,197		
Nov	5,968			1,200		

¹ December preceding year.

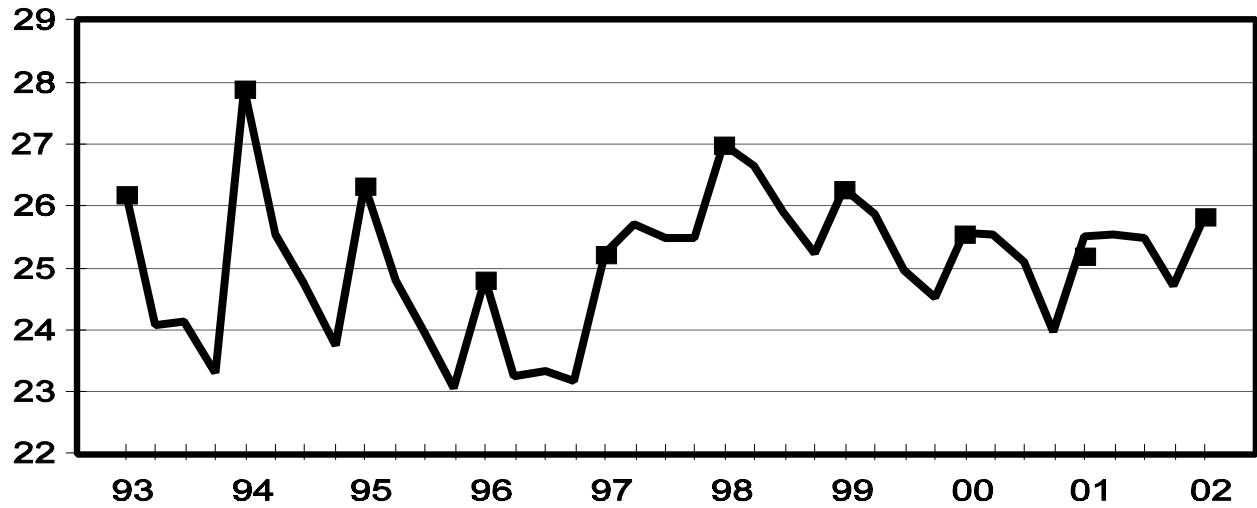
U.S. Quarterly Sows Farrowed March - May

Million Head



U.S. Quarterly Pig Crop March - May

Million Head



**Hogs and Pigs: Breeding, Market, and Total Inventory
by State and United States, March 1, 2001-2002 ¹**

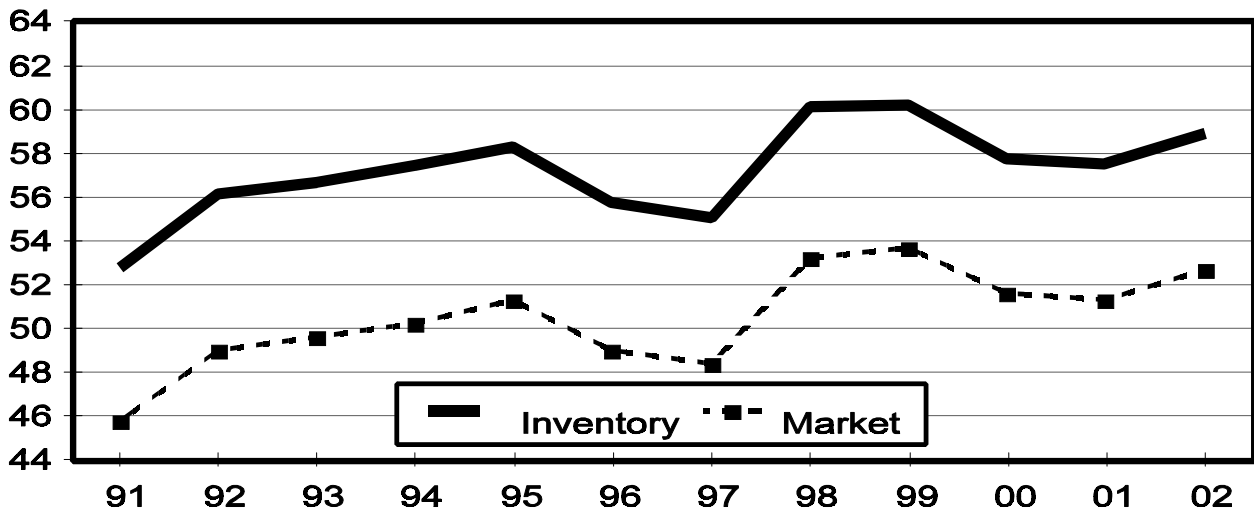
State	Breeding			Market			Total		
	2001	2002		2001	2002		2001	2002	
		Number	as % of 2001		Number	as % of 2001		Number	as % of 2001
	<i>1,000 Head</i>	<i>1,000 Head</i>	<i>Percent</i>	<i>1,000 Head</i>	<i>1,000 Head</i>	<i>Percent</i>	<i>1,000 Head</i>	<i>1,000 Head</i>	<i>Percent</i>
AR	105	105	100	545	485	89	650	590	91
CO	180	180	100	580	610	105	760	790	104
IL	440	450	102	3,610	3,700	102	4,050	4,150	102
IN	360	340	94	2,790	2,810	101	3,150	3,150	100
IA	1,120	1,120	100	13,280	13,880	105	14,400	15,000	104
KS	160	170	106	1,350	1,430	106	1,510	1,600	106
MI	120	120	100	780	840	108	900	960	107
MN	590	570	97	5,210	5,230	100	5,800	5,800	100
MO	380	370	97	2,520	2,580	102	2,900	2,950	102
NE	360	390	108	2,540	2,560	101	2,900	2,950	102
NC	1,000	1,000	100	8,300	8,700	105	9,300	9,700	104
OH	165	165	100	1,285	1,305	102	1,450	1,470	101
OK	340	330	97	1,900	1,960	103	2,240	2,290	102
PA	120	130	108	910	960	105	1,030	1,090	106
SD	135	150	111	1,135	1,120	99	1,270	1,270	100
TX	90	100	111	810	810	100	900	910	101
WI	80	60	75	510	440	86	590	500	85
Oth Sts ²	487	486	100	3,237	3,241	100	3,724	3,728	100
US	6,232	6,236	100	51,292	52,661	103	57,524	58,898	102

¹ May not add due to rounding.

² Individual State estimates not available for the 33 other States.

March 1 Hog Inventory & Market Hogs United States

Million Head



**Market Hogs and Pigs: Inventory Number by Weight Group,
State, and United States, March 1, 2001-2002 ¹**

State	Under 60 Lbs.		60-119 Lbs.		120-179 Lbs.		180 Lbs. and Over	
	2001	2002	2001	2002	2001	2002	2001	2002
	<i>1,000 Head</i>	<i>1,000 Head</i>	<i>1,000 Head</i>	<i>1,000 Head</i>	<i>1,000 Head</i>	<i>1,000 Head</i>	<i>1,000 Head</i>	<i>1,000 Head</i>
AR	195	250	130	65	120	80	100	90
CO	310	330	75	95	85	70	110	115
IL	1,280	1,310	870	910	830	820	630	660
IN	1,010	1,010	670	700	560	580	550	520
IA	3,980	4,360	3,600	3,700	3,070	3,220	2,630	2,600
KS	460	490	275	270	245	290	370	380
MI	310	310	185	215	160	165	125	150
MN	2,040	2,080	1,310	1,320	1,090	1,060	770	770
MO	1,110	1,130	610	620	500	520	300	310
NE	990	1,040	650	660	510	500	390	360
NC	3,350	3,400	1,800	1,950	1,700	1,850	1,450	1,500
OH	540	545	305	310	280	290	160	160
OK	840	860	320	310	260	280	480	510
PA	335	345	240	255	185	200	150	160
SD	390	375	300	295	245	265	200	185
TX	265	265	170	175	160	165	215	205
WI	190	165	110	105	110	90	100	80
Oth Sts ²	1,142	1,116	797	776	695	727	604	622
US	18,737	19,381	12,417	12,731	10,805	11,172	9,334	9,377

¹ Weight groups may not add to Market due to rounding.

² Individual State estimates not available for the 33 other States.

**Hogs and Pigs: Breeding, Market, and Total Inventory
by State and United States, June 1, 2001-2002¹**

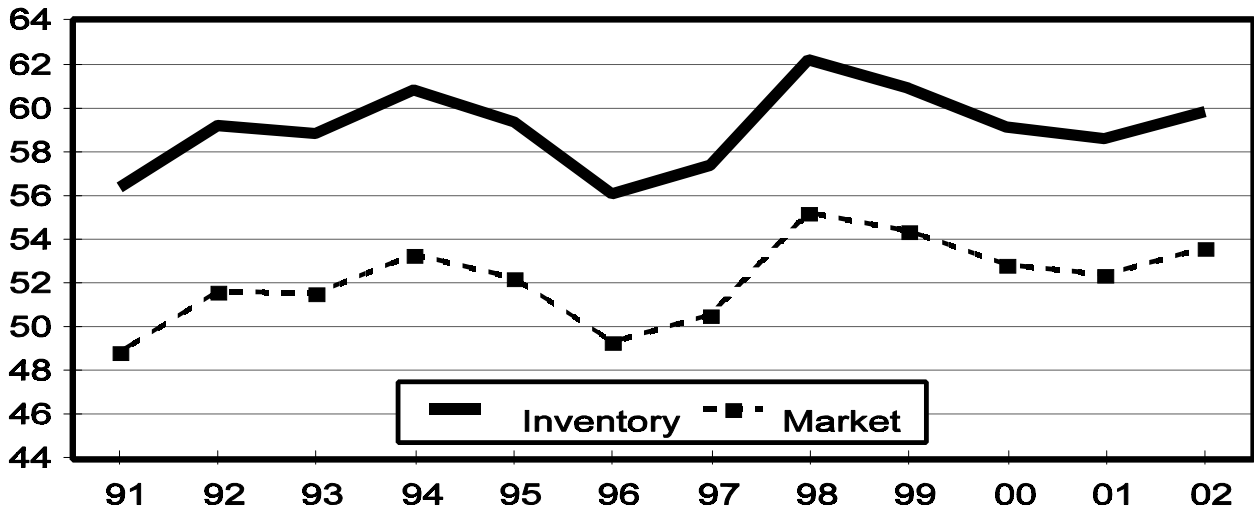
State	Breeding			Market			Total		
	2001	2002		2001	2002		2001	2002	
		Number	as % of 2001		Number	as % of 2001		Number	as % of 2001
	<i>1,000 Head</i>	<i>1,000 Head</i>	<i>Percent</i>	<i>1,000 Head</i>	<i>1,000 Head</i>	<i>Percent</i>	<i>1,000 Head</i>	<i>1,000 Head</i>	<i>Percent</i>
AR	105	100	95	545	495	91	650	595	92
CO	170	150	88	590	600	102	760	750	99
IL	420	450	107	3,680	3,800	103	4,100	4,250	104
IN	350	330	94	2,800	2,820	101	3,150	3,150	100
IA	1,120	1,130	101	13,780	14,270	104	14,900	15,400	103
KS	165	165	100	1,365	1,375	101	1,530	1,540	101
MI	110	110	100	810	800	99	920	910	99
MN	590	580	98	5,210	5,320	102	5,800	5,900	102
MO	390	380	97	2,660	2,670	100	3,050	3,050	100
NE	360	395	110	2,540	2,505	99	2,900	2,900	100
NC	1,000	1,000	100	8,700	8,800	101	9,700	9,800	101
OH	160	170	106	1,300	1,330	102	1,460	1,500	103
OK	330	320	97	1,860	2,100	113	2,190	2,420	111
PA	120	130	108	910	940	103	1,030	1,070	104
SD	140	140	100	1,130	1,130	100	1,270	1,270	100
TX	95	105	111	765	885	116	860	990	115
WI	75	65	87	495	465	94	570	530	93
Oth Sts ²	486	489	101	3,277	3,322	101	3,763	3,812	101
US	6,186	6,209	100	52,417	53,627	102	58,603	59,837	102

¹ May not add due to rounding.

² Individual State estimates not available for the 33 other States.

June 1 Hog Inventory & Market Hogs United States

Million Head



**Market Hogs and Pigs: Inventory Number by Weight Group,
State, and United States, June 1, 2001-2002 ¹**

State	Under 60 Lbs.		60-119 Lbs.		120-179 Lbs.		180 Lbs. and Over	
	2001	2002	2001	2002	2001	2002	2001	2002
	<i>1,000 Head</i>	<i>1,000 Head</i>	<i>1,000 Head</i>	<i>1,000 Head</i>	<i>1,000 Head</i>	<i>1,000 Head</i>	<i>1,000 Head</i>	<i>1,000 Head</i>
AR	190	255	140	60	115	85	100	95
CO	335	310	65	90	75	90	115	110
IL	1,320	1,400	950	950	760	800	650	650
IN	1,040	1,000	680	720	540	580	540	520
IA	4,350	4,520	3,800	3,870	3,080	3,280	2,550	2,600
KS	475	510	295	295	240	250	355	320
MI	315	310	215	195	155	155	125	140
MN	2,140	2,130	1,300	1,320	1,050	1,110	720	760
MO	1,320	1,190	560	620	480	520	300	340
NE	1,050	1,020	650	630	490	480	350	375
NC	3,600	3,600	2,110	2,100	1,620	1,650	1,370	1,450
OH	530	540	325	325	280	290	165	175
OK	850	920	310	280	270	290	430	610
PA	360	350	235	240	175	180	140	170
SD	430	410	280	295	245	250	175	175
TX	270	290	150	230	150	165	195	200
WI	195	165	115	115	100	100	85	85
Oth Sts ²	1,153	1,220	812	774	711	683	602	645
US	19,923	20,140	12,992	13,109	10,536	10,958	8,967	9,420

¹ Weight groups may not add to Market due to rounding.

² Individual State estimates not available for the 33 other States.

**Hogs and Pigs: Breeding, Market, and Total Inventory
by State and United States, September 1, 2000-2001¹**

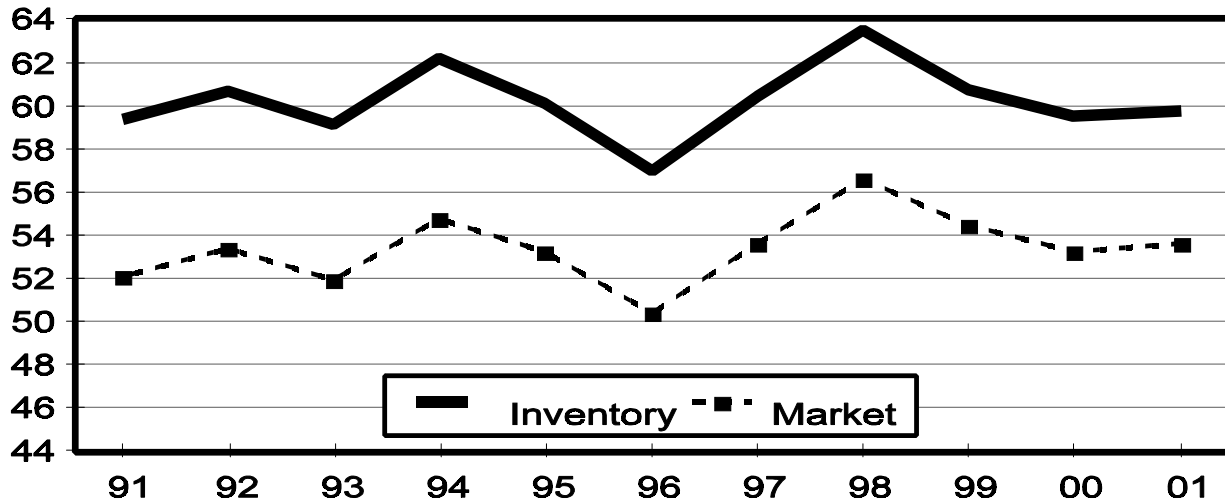
State	Breeding			Market			Total		
	2000	2001		2000	2001		2000	2001	
		Number	as % of 2000		Number	as % of 2000		Number	as % of 2000
	<i>1,000 Head</i>	<i>1,000 Head</i>	<i>Percent</i>	<i>1,000 Head</i>	<i>1,000 Head</i>	<i>Percent</i>	<i>1,000 Head</i>	<i>1,000 Head</i>	<i>Percent</i>
AR	105	100	95	575	555	97	680	655	96
CO	205	175	85	685	605	88	890	780	88
IL	420	420	100	3,630	3,780	104	4,050	4,200	104
IN	360	330	92	2,940	2,820	96	3,300	3,150	95
IA	1,160	1,120	97	14,140	13,980	99	15,300	15,100	99
KS	155	165	106	1,375	1,435	104	1,530	1,600	105
MI	110	110	100	910	860	95	1,020	970	95
MN	580	590	102	5,020	5,310	106	5,600	5,900	105
MO	380	380	100	2,620	2,670	102	3,000	3,050	102
NE	380	360	95	2,620	2,590	99	3,000	2,950	98
NC	1,000	1,000	100	8,700	8,900	102	9,700	9,900	102
OH	160	160	100	1,260	1,310	104	1,420	1,470	104
OK	340	330	97	1,990	2,040	103	2,330	2,370	102
PA	115	125	109	925	955	103	1,040	1,080	104
SD	130	140	108	1,150	1,140	99	1,280	1,280	100
TX	85	95	112	845	795	94	930	890	96
WI	65	75	115	525	485	92	590	560	95
Oth Sts ²	496	483	97	3,340	3,389	101	3,835	3,872	101
US	6,246	6,158	99	53,250	53,619	101	59,495	59,777	100

¹ May not add due to rounding.

² Individual State estimates not available for the 33 other States.

September 1 Hog Inventory & Market Hogs United States

Million Head



**Market Hogs and Pigs: Inventory Number by Weight Group,
State, and United States, September 1, 2000-2001 ¹**

State	Under 60 Lbs.		60-119 Lbs.		120-179 Lbs.		180 Lbs. and Over	
	2000	2001	2000	2001	2000	2001	2000	2001
	<i>1,000 Head</i>	<i>1,000 Head</i>	<i>1,000 Head</i>	<i>1,000 Head</i>	<i>1,000 Head</i>	<i>1,000 Head</i>	<i>1,000 Head</i>	<i>1,000 Head</i>
AR	220	245	135	110	120	100	100	100
CO	400	340	80	80	80	75	125	110
IL	1,260	1,380	900	930	820	790	650	680
IN	1,130	1,050	710	700	570	550	530	520
IA	4,420	4,370	3,900	3,910	3,140	3,100	2,680	2,600
KS	540	470	280	290	255	275	300	400
MI	360	330	230	225	180	175	140	130
MN	2,080	2,190	1,220	1,320	950	1,060	770	740
MO	1,120	1,140	690	630	520	520	290	380
NE	1,100	1,030	650	670	490	510	380	380
NC	3,450	3,500	2,000	2,200	1,750	1,800	1,500	1,400
OH	550	545	285	325	255	270	170	170
OK	925	880	325	340	245	235	495	585
PA	345	375	240	250	190	180	150	150
SD	420	395	290	290	255	260	185	195
TX	240	295	175	180	180	145	250	175
WI	195	195	120	110	110	90	100	90
Oth Sts ²	1,200	1,181	825	878	707	719	607	612
US	19,955	19,911	13,055	13,438	10,817	10,854	9,422	9,417

¹ Weight groups may not add to Market due to rounding.

² Individual State estimates not available for the 33 other States.

**Hogs and Pigs: Breeding, Market, and Total Inventory
by State and United States, December 1, 2000-2001¹**

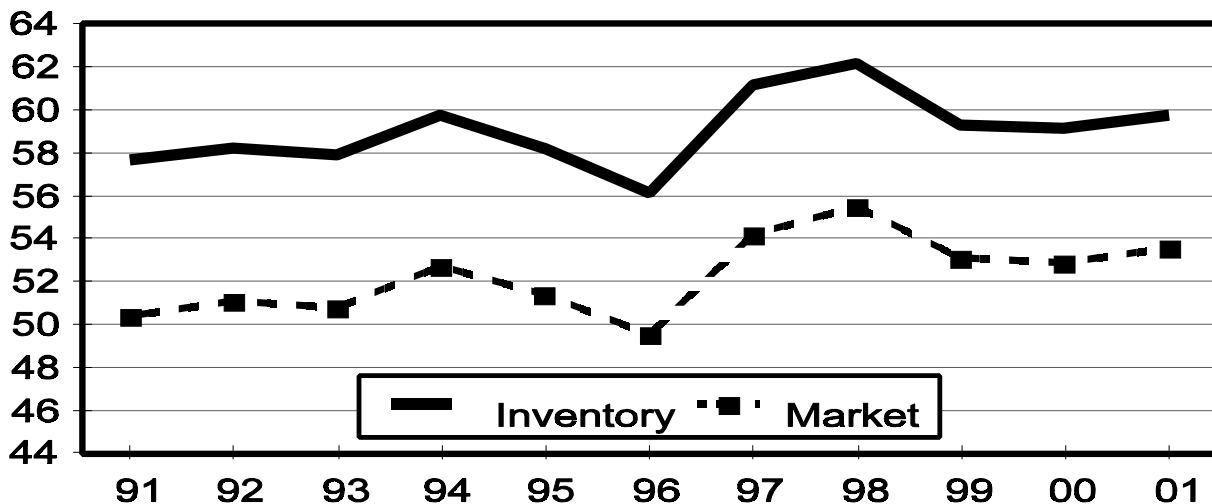
State	Breeding			Market			Total		
	2000	2001		2000	2001		2000	2001	
		Number	as % of 2000		Number	as % of 2000		Number	as % of 2000
	<i>1,000 Head</i>	<i>1,000 Head</i>	<i>Percent</i>	<i>1,000 Head</i>	<i>1,000 Head</i>	<i>Percent</i>	<i>1,000 Head</i>	<i>1,000 Head</i>	<i>Percent</i>
AR	110	100	91	575	480	83	685	580	85
CO	190	175	92	650	625	96	840	800	95
IL	450	450	100	3,700	3,800	103	4,150	4,250	102
IN	375	340	91	2,975	2,860	96	3,350	3,200	96
IA	1,120	1,130	101	13,980	14,270	102	15,100	15,400	102
KS	160	170	106	1,360	1,400	103	1,520	1,570	103
MI	110	110	100	840	850	101	950	960	101
MN	600	570	95	5,200	5,230	101	5,800	5,800	100
MO	380	380	100	2,520	2,620	104	2,900	3,000	103
NE	360	370	103	2,690	2,530	94	3,050	2,900	95
NC	1,000	1,000	100	8,300	8,800	106	9,300	9,800	105
OH	170	160	94	1,320	1,270	96	1,490	1,430	96
OK	340	340	100	1,970	2,140	109	2,310	2,480	107
PA	120	130	108	910	930	102	1,030	1,060	103
SD	140	145	104	1,180	1,145	97	1,320	1,290	98
TX	85	100	118	835	800	96	920	900	98
WI	75	65	87	535	475	89	610	540	89
Oth Sts ²	485	474	98	3,328	3,369	101	3,813	3,844	101
US	6,270	6,209	99	52,868	53,594	101	59,138	59,804	101

¹ May not add due to rounding.

² Individual State estimates not available for the 33 other States.

December 1 Hog Inventory & Market Hogs United States

Million Head



**Market Hogs and Pigs: Inventory Number by Weight Group,
State, and United States, December 1, 2000-2001¹**

State	Under 60 Lbs.		60-119 Lbs.		120-179 Lbs.		180 Lbs. and Over	
	2000	2001	2000	2001	2000	2001	2000	2001
	<i>1,000 Head</i>	<i>1,000 Head</i>	<i>1,000 Head</i>	<i>1,000 Head</i>	<i>1,000 Head</i>	<i>1,000 Head</i>	<i>1,000 Head</i>	<i>1,000 Head</i>
AR	210	230	135	75	125	75	105	100
CO	370	350	80	90	85	75	115	110
IL	1,310	1,380	920	920	810	830	660	670
IN	1,110	1,040	725	710	590	580	550	530
IA	4,360	4,510	3,790	3,900	3,090	3,060	2,740	2,800
KS	495	480	285	290	210	250	370	380
MI	320	315	200	205	170	170	150	160
MN	2,110	2,130	1,270	1,250	1,040	1,030	780	820
MO	1,010	1,140	680	600	510	510	320	370
NE	1,010	1,030	700	610	550	500	430	390
NC	3,400	3,500	1,800	2,020	1,650	1,730	1,450	1,550
OH	540	520	320	310	280	265	180	175
OK	880	860	355	350	245	300	490	630
PA	330	365	235	235	190	180	155	150
SD	430	410	290	290	260	250	200	195
TX	215	260	175	140	200	165	245	235
WI	190	180	125	105	110	100	110	90
Oth Sts ²	1,131	1,208	848	824	731	674	619	663
US	19,421	19,908	12,933	12,924	10,846	10,744	9,669	10,018

¹ Weight groups may not add to Market due to rounding.

² Individual State estimates not available for the 33 other States.

**Farrowings: Number of Sows, Pigs per Litter, and Pig Crop
by State and United States, December-February 2001-2002^{1 2}**

State	Sows Farrowing			Pigs per Litter		Pig Crop ³		
	2001	2002		2001	2002	2001	2002	
		Number	as % of 2001				Number	as % of 2001
	<i>1,000 Head</i>	<i>1,000 Head</i>	<i>Percent</i>	<i>Number</i>	<i>Number</i>	<i>1,000 Head</i>	<i>1,000 Head</i>	<i>Percent</i>
AR	53	52	98	8.90	9.20	472	478	101
CO	76	79	104	8.50	8.40	646	664	103
IL	195	210	108	8.50	8.55	1,658	1,796	108
IN	155	150	97	8.80	8.65	1,364	1,298	95
IA	430	420	98	8.40	8.50	3,612	3,570	99
KS	73	79	108	8.55	8.40	624	664	106
MI	46	50	109	8.75	9.00	403	450	112
MN	260	260	100	8.95	8.80	2,327	2,288	98
MO	170	170	100	8.75	8.85	1,488	1,505	101
NE	140	170	121	8.80	8.80	1,232	1,496	121
NC	530	540	102	8.85	8.95	4,691	4,833	103
OH	73	74	101	8.50	8.90	621	659	106
OK	165	170	103	9.25	8.75	1,526	1,488	98
PA	51	53	104	8.80	8.80	449	466	104
SD	62	70	113	8.80	8.90	546	623	114
TX	37	43	116	8.90	9.00	329	387	118
WI	34	28	82	8.25	8.45	281	237	84
Oth Sts ⁴	198	214	108	8.55	8.45	1,694	1,809	107
US	2,748	2,832	103	8.72	8.73	23,963	24,711	103

¹ May not add due to rounding.

² December preceding year.

³ Number of pigs born December-February on hand March 1, or had been sold.

⁴ Individual State estimates not available for the 33 other States.

**Farrowings: Number of Sows, Pigs per Litter, and Pig Crop
by State and United States, March-May 2001-2002 ¹**

State	Sows Farrowing			Pigs per Litter		Pig Crop ²		
	2001	2002		2001	2002	2001	2002	
		Number	as % of 2001				Number	as % of 2001
	<i>1,000 Head</i>	<i>1,000 Head</i>	<i>Percent</i>	<i>Number</i>	<i>Number</i>	<i>1,000 Head</i>	<i>1,000 Head</i>	<i>Percent</i>
AR	54	52	96	9.00	9.60	486	499	103
CO	79	76	96	8.30	8.50	656	646	98
IL	210	225	107	8.85	8.60	1,859	1,935	104
IN	155	155	100	8.90	8.80	1,380	1,364	99
IA	450	460	102	8.75	8.50	3,938	3,910	99
KS	77	82	106	8.65	8.75	666	718	108
MI	50	50	100	8.90	8.85	445	443	100
MN	270	270	100	9.05	8.95	2,444	2,417	99
MO	185	180	97	8.90	8.95	1,647	1,611	98
NE	160	175	109	8.80	9.00	1,408	1,575	112
NC	540	550	102	9.00	9.00	4,860	4,950	102
OH	73	75	103	8.70	8.95	635	671	106
OK	165	165	100	9.35	8.85	1,543	1,460	95
PA	52	54	104	8.90	8.70	463	470	102
SD	66	70	106	8.90	8.80	587	616	105
TX	40	45	113	8.80	8.90	352	401	114
WI	33	29	88	8.60	8.55	284	248	87
Oth Sts ³	211	220	104	8.78	8.71	1,856	1,917	103
US	2,870	2,933	102	8.89	8.81	25,509	25,851	101

¹ May not add due to rounding.

² Number of pigs born March-May that were still on hand June 1, or had been sold.

³ Individual State estimates not available for the 33 other States.

**Farrowings: Number of Sows, Pigs per Litter, and Pig Crop
by State and United States, June-August 2000-2002 ¹**

State	Sows Farrowing				Pigs per Litter		Pig Crop ²		
	2000	2001	2002 ³		2000	2001	2000	2001	
			Number	as % of 2001				Number	as % of 2000
	<i>1,000 Head</i>	<i>1,000 Head</i>	<i>1,000 Head</i>	<i>Percent</i>	<i>Number</i>	<i>Number</i>	<i>1,000 Head</i>	<i>1,000 Head</i>	<i>Percent</i>
AR	55	57	51	89	9.25	9.30	509	530	104
CO	90	79	76	96	8.40	8.45	756	668	88
IL	200	210	220	105	8.70	8.65	1,740	1,817	104
IN	155	150	150	100	8.75	8.90	1,356	1,335	98
IA	470	440	460	105	8.80	8.60	4,136	3,784	91
KS	84	78	80	103	8.80	8.70	739	679	92
MI	50	52	51	98	8.90	9.10	445	473	106
MN	260	265	270	102	9.10	9.00	2,366	2,385	101
MO	180	180	175	97	8.80	8.90	1,584	1,602	101
NE	160	155	180	116	9.00	8.70	1,440	1,349	94
NC	540	550	560	102	8.80	9.10	4,752	5,005	105
OH	75	75	77	103	8.85	8.90	664	668	101
OK	170	175	165	94	8.90	9.40	1,513	1,645	109
PA	49	54	54	100	8.70	8.80	426	475	112
SD	62	66	67	102	9.00	8.85	558	584	105
TX	43	44	47	107	9.40	8.70	404	383	95
WI	30	36	28	78	8.90	8.15	267	293	110
Oth Sts ⁴	216	212	219	103	8.76	8.79	1,893	1,864	98
US	2,889	2,878	2,930	102	8.84	8.87	25,548	25,539	100

¹ May not add due to rounding.

² Number of pigs born June-August on hand September 1, or had been sold.

³ Intentions.

⁴ Individual State estimates not available for the 33 other States.

**Farrowings: Number of Sows, Pigs per Litter, and Pig Crop
by State and United States, September-November 2000-2002¹**

State	Sows Farrowing				Pigs per Litter		Pig Crop ²		
	2000	2001	2002 ³		2000	2001	2000	2001	
			Number	as % of 2001				Number	as % of 2000
	<i>1,000 Head</i>	<i>1,000 Head</i>	<i>1,000 Head</i>	<i>Percent</i>	<i>Number</i>	<i>Number</i>	<i>1,000 Head</i>	<i>1,000 Head</i>	<i>Percent</i>
AR	55	51	50	98	9.00	9.50	495	485	98
CO	86	82	74	90	8.50	8.50	731	697	95
IL	210	220	220	100	8.70	8.60	1,827	1,892	104
IN	165	155	150	97	8.90	8.70	1,469	1,349	92
IA	440	460	460	100	8.85	8.70	3,894	4,002	103
KS	81	81	78	96	8.60	8.55	697	693	99
MI	48	46	50	109	9.05	9.15	434	421	97
MN	270	265	270	102	8.90	9.00	2,403	2,385	99
MO	175	180	175	97	8.75	8.80	1,531	1,584	103
NE	150	165	180	109	8.75	8.70	1,313	1,436	109
NC	530	530	560	106	8.85	9.00	4,691	4,770	102
OH	74	74	75	101	8.80	8.80	651	651	100
OK	165	170	160	94	9.35	9.10	1,543	1,547	100
PA	51	55	54	98	8.70	8.80	444	484	109
SD	65	71	67	94	8.90	8.95	579	635	110
TX	38	41	44	107	9.40	8.90	357	365	102
WI	33	30	27	90	8.55	8.45	282	254	90
Oth Sts ⁴	202	213	221	104	8.78	8.66	1,771	1,842	104
US	2,838	2,889	2,915	101	8.85	8.82	25,112	25,492	102

¹ May not add due to rounding.

² Number of pigs born September-November that were still on hand December 1, or had been sold.

³ Intentions.

⁴ Individual State estimates not available for the 33 other States.

Reliability of June 1 Hogs and Pigs Estimates

Survey Procedures: A random sample of roughly 12,500 U.S. producers was surveyed to provide data for these estimates. Survey procedures ensured that all hog and pig producers, regardless of size, had a chance to be included in the survey. Large producers were sampled more heavily than small operations. Data were collected from about 9,900 operations, 79 percent of the total sample, during the first-half of June by mail, telephone, and face-to-face personal interviews. Regardless of when operations responded, they were asked to report inventories as of June 1.

Estimation Procedures: These hogs and pigs estimates were prepared by the Agricultural Statistics Board after reviewing recommendations and analysis submitted by each State office. National and State survey data were reviewed for reasonableness with each other and with estimates from past years using a balance sheet. The balance sheet begins with the previous inventory estimate, adds the estimates of births and imports, and subtracts the estimates of slaughter, exports, and deaths. This indicated ending inventory level is compared to the Agricultural Statistics Board estimate for reasonableness.

Revision Policy: Revisions to previous estimates are made to improve quarter to quarter relationships. Estimates for the previous four quarters are subject to revision when current estimates are made. In December, estimates for all quarters of the current and previous year are reviewed. The reviews are primarily based on hog check-off receipts and slaughter. Estimates will also be reviewed after data from the Department of Agriculture five-year Census of Agriculture are available. No revisions will be made after that date.

Reliability: Since all operations raising hogs are not included in the sample, survey estimates are subject to sampling variability. Survey results are also subject to non-sampling errors such as omissions, duplication, and mistakes in reporting, recording, and processing the data. The affects of these errors cannot be measured directly. They are minimized through rigid quality controls in the data collection process and through a careful review of all reported data for consistency and reasonableness.

To assist users in evaluating the reliability of the estimates in this report, the "Root Mean Square Error" is shown for selected items in the following table. The "**Root Mean Square Error**" is a statistical measure based on past performance and is computed using the difference between first and final estimates. The "Root Mean Square Error" for hog inventory estimates over the past 20 quarters is 1.1 percent. This means that chances are 2 out of 3 that the final estimate will not be above or below the current estimate of 59.8 million head by more than 1.1 percent. Chances are 9 out of 10 that the difference will not exceed 1.9 percent.

Reliability of June 1 Hog Estimates ¹

Item	Root Mean Square Error	90% Confidence Level		Difference Between First and Latest Estimates			Quarters	
				Average	Smallest	Largest	First Above Latest	First Below Latest
				<i>1,000 Head</i>	<i>1,000 Head</i>	<i>1,000 Head</i>	<i>Number</i>	<i>Number</i>
All Hogs & Pigs	1.1	1.9	1,137	524	40	1,238	8	12
Pig Crop	1.4	2.4	620	267	0	933	12	8
Expected Farrowings								
Next Quarter	1.8	3.1	91	36	1	158	10	10
Following	2.3	3.9	114	53	6	146	10	10

¹ Based on quarterly records for the past 20 quarters.

Index

Page

Farrowings: Number of Sows, Pig Crop, and Pigs per Litter, United States	5
Farrowings: Number of Sows, Pigs per Litter, and Pig Crop, by State and United States, December-February	16
Farrowings: Number of Sows, Pigs per Litter, and Pig Crop, by State and United States, June-August	18
Farrowings: Number of Sows, Pigs per Litter, and Pig Crop, by State and United States, March-May	17
Farrowings: Number of Sows, Pigs per Litter, and Pig Crop, by State and United States, September-November	19
Hogs and Pigs: Breeding, Market, and Total Inventory by State and United States, December 1	14
Hogs and Pigs: Breeding, Market, and Total Inventory by State and United States, June 1	10
Hogs and Pigs: Breeding, Market, and Total Inventory by State and United States, March 1	8
Hogs and Pigs: Breeding, Market, and Total Inventory by State and United States, September 1	12
Hogs and Pigs: Inventory Number by Class, Weight Group, and Quarter, United States	4
Market Hogs and Pigs: Inventory Number by Weight Group, State, and United States, December 1	15
Market Hogs and Pigs: Inventory Number by Weight Group, State, and United States, June 1	11
Market Hogs and Pigs: Inventory Number by Weight Group, State, and United States, March 1	9
Market Hogs and Pigs: Inventory Number by Weight Group, State, and United States, September 1	13
Monthly Farrowings: Number of Sows, Pigs per Litter, and Pig Crop, United States, December-November	6
Monthly Sows and Gilts: Inventory and Number Bred, United States, December-November	6
Pigs per Litter: By Size of Operation, United States	5
Reliability of Hogs and Pigs Estimates	20

The next "Monthly Hogs and Pigs" report will be released at 3 p.m. ET on July 26, 2002.

The next "Quarterly Hogs and Pigs" report will be released at 3 p.m. ET on September 27, 2002.

The United States Department of Agriculture (USDA) prohibits discrimination in all its programs on the basis of race, color, national origin, gender, religion, age, disability, political beliefs, sexual orientation, and marital or family status. (Not all prohibited bases apply to all programs.) Persons with disabilities who require alternative means for communication of program information (braille, large print, audiotape, etc.) should contact the USDA's TARGET Center at 202-720-2600 (voice and TDD).

To file a complaint of discrimination, write USDA, Director, Office of Civil Rights, Room 326-W, Whitten Building, 1400 Independence Avenue, SW, Washington, D.C., 20250-9410, or call 202-720-5964 (voice or TDD). USDA is an equal opportunity provider and employer.

ACCESS TO REPORTS!!

For your convenience, there are several ways to obtain NASS reports, data products, and services:

INTERNET ACCESS

All NASS reports are available free of charge on the worldwide Internet. For access, connect to the Internet and go to the NASS Home Page at: <http://www.usda.gov/nass/>. Select "Today's Reports" or Publications and then Reports by Calendar or Publications and then Search, by Title or Subject.

E-MAIL SUBSCRIPTION

There are two options for subscribing via e-mail. All NASS reports are available by subscription free of charge direct to your e-mail address. 1) Starting with the NASS Home Page at <http://www.usda.gov/nass/>, click on **Publications**, then click on the **Subscribe by E-mail** button which takes you to the page describing e-mail delivery of reports. Finally, click on **Go to the Subscription Page** and follow the instructions. 2) If you do NOT have Internet access, send an e-mail message to: usda-reports@usda.mannlib.cornell.edu. In the body of the message type the word: **list**.

AUTOFAX ACCESS

NASSFax service is available for some reports from your fax machine. Please call 202-720-2000, using the handset attached to your fax. Respond to the voice prompts. Document 0411 is a list of available reports.

PRINTED REPORTS OR DATA PRODUCTS

CALL OUR TOLL-FREE ORDER DESK: 800-999-6779 (U.S. and Canada)
Other areas, please call 703-605-6220 FAX: 703-605-6900
(Visa, MasterCard, check, or money order acceptable for payment.)

ASSISTANCE

For **assistance** with general agricultural statistics or further information about NASS or its products or services, contact the **Agricultural Statistics Hotline** at **800-727-9540**, 7:30 a.m. to 4:00 p.m. ET, or e-mail: nass@nass.usda.gov.
