

Quarterly Hogs and Pigs

Released March 28, 2003, by the National Agricultural Statistics Service (NASS), Agricultural Statistics Board, U.S. Department of Agriculture. For information on "Quarterly Hogs and Pigs" call Rodger Ott at 202-720-3106, office hours 7:30 a.m. to 4:00 p.m. ET.

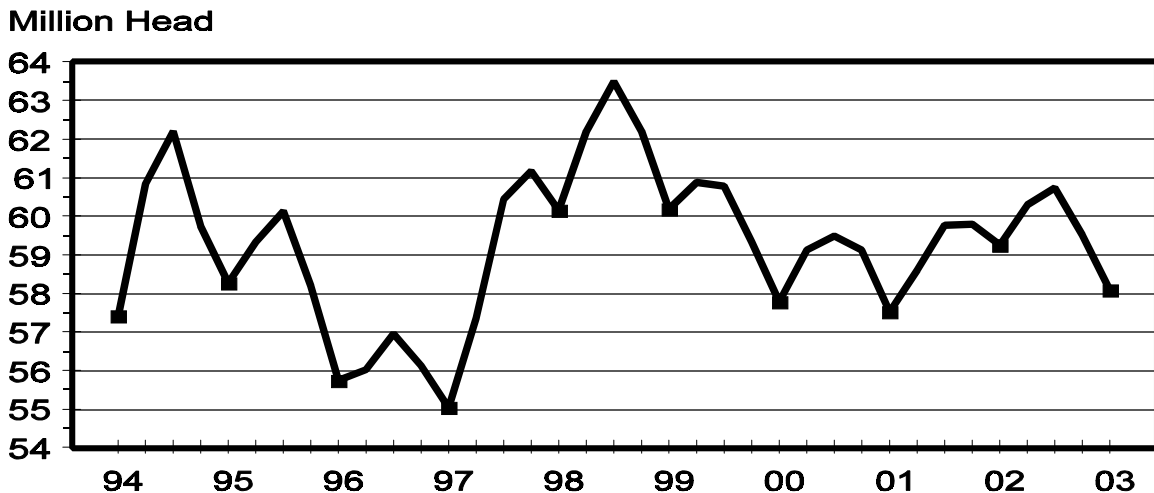
U.S. Hog Inventory Down 2 Percent

U.S. inventory of all hogs and pigs on March 1, 2003, was 58.1 million head. This was 2 percent below March 1, 2002, and 2 percent below December 1, 2002.

Breeding inventory, at 5.96 million head, was down 4 percent from March 1, 2002, and down 1 percent from last quarter. **Market hog inventory**, at 52.2 million head, was 2 percent below last year and 3 percent below last quarter.

The December 2002-February 2003 U.S. pig crop, at 24.4 million head, was 2 percent less than 2002, and 2 percent more than 2001. Sows farrowing during this period totaled 2.77 million head, 2 percent below last year. The sows farrowed during this quarter represented 46 percent of the breeding herd. The average pigs per litter was 8.81 pigs saved per litter for the December 2002-February 2003 period, compared to 8.74 last year. Pigs saved per litter by size of operation ranged from 7.60 for operations with 1-99 hogs to 8.90 for operations with more than 5,000 hogs and pigs.

U.S. Quarterly Hogs and Pigs Inventory March 1



U.S. hog producers intend to have 2.84 million sows farrow during the March-May 2003 quarter, 3 percent below the actual farrowings during the same period in 2002, and 1 percent below 2001. Intended farrowings for June-August 2003, at 2.79 million sows, are 3 percent below the same period in both 2002 and 2001.

The total number of hogs under contract, owned by operations with over 5,000 head, but raised by contractees, accounted for 35 percent of the total U.S. hog inventory, up from 31 percent last year.

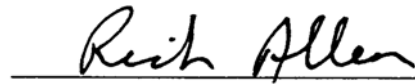
Revisions

All inventory and pig crop estimates for March 2002 through December 2002 were reviewed using final pig crop, official slaughter, death loss, import, and export data in U.S. level balance sheets. Based on the findings of this review, adjustments of one percent were made to the September 1, 2002 inventory, two percent to the June-August 2002 pig crop, and one percent to the December 1, 2002 inventory.

This report was approved on March 28, 2003.



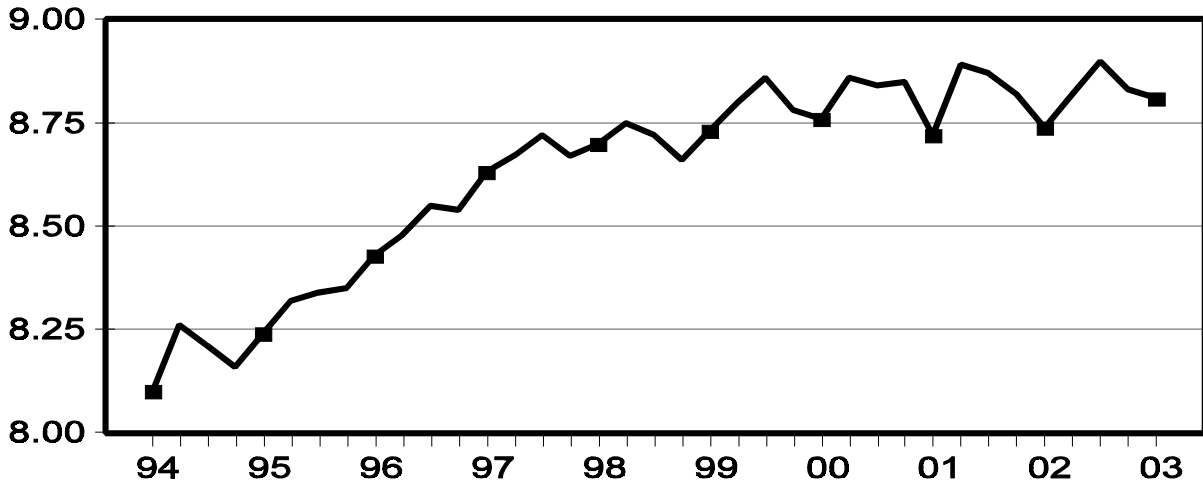
Acting Secretary of
Agriculture
Bill Hawks



Agricultural Statistics Board
Chairperson
Rich Allen

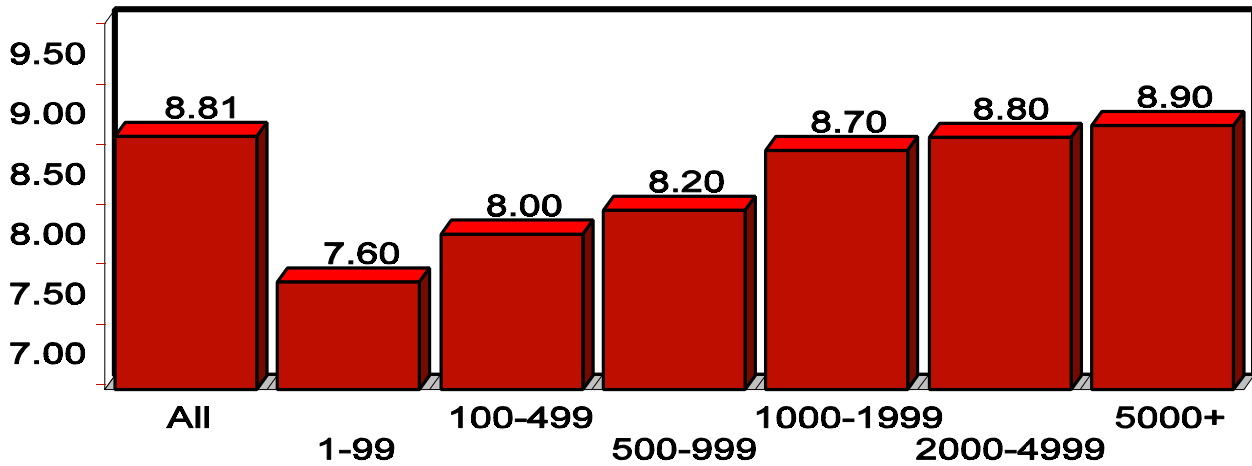
U.S. Quarterly Litter Rate December - February

Number Head



U.S. Pigs per Litter By Size of Operation, Dec. 2002 - Feb. 2003

Number Head



**Hogs and Pigs: Inventory Number by Class, Weight Group,
and Quarter, United States, 2001-2003¹**

Item	2001	2002	2003	2003 as % of	
				2001	2002
	<i>1,000 Head</i>	<i>1,000 Head</i>	<i>1,000 Head</i>	<i>Percent</i>	<i>Percent</i>
March 1 Inventory					
All Hogs and Pigs	57,524	59,248	58,107	101	98
Kept for Breeding	6,232	6,236	5,956	96	96
Market	51,292	53,011	52,151	102	98
Market Hogs and Pigs by Weight Groups					
Under 60 Pounds	18,737	19,487	19,110	102	98
60-119 Pounds	12,417	12,975	12,655	102	98
120-179 Pounds	10,805	11,172	10,894	101	98
180 Pounds and Over	9,334	9,377	9,492	102	101
June 1 Inventory					
All Hogs and Pigs	58,603	60,288			
Kept for Breeding	6,186	6,209			
Market	52,417	54,078			
Market Hogs and Pigs by Weight Groups					
Under 60 Pounds	19,923	20,186			
60-119 Pounds	12,992	13,588			
120-179 Pounds	10,536	10,884			
180 Pounds and Over	8,967	9,420			
September 1 Inventory					
All Hogs and Pigs	59,777	60,725			
Kept for Breeding	6,158	6,054			
Market	53,619	54,670			
Market Hogs and Pigs by Weight Groups					
Under 60 Pounds	19,911	20,070			
60-119 Pounds	13,438	13,655			
120-179 Pounds	10,854	11,019			
180 Pounds and Over	9,417	9,926			
December 1 Inventory					
All Hogs and Pigs	59,804	59,513			
Kept for Breeding	6,209	6,012			
Market	53,594	53,501			
Market Hogs and Pigs by Weight Groups					
Under 60 Pounds	19,908	19,461			
60-119 Pounds	12,924	13,054			
120-179 Pounds	10,744	10,881			
180 Pounds and Over	10,018	10,105			

¹ May not add due to rounding.

**Farrowings: Number of Sows, Pig Crop and Pigs per Litter,
United States, 2001-2003 ¹**

Item	2001	2002	2003	2003 as % of	
				2001	2002
	<i>1,000 Head</i>	<i>1,000 Head</i>	<i>1,000 Head</i>	<i>Percent</i>	<i>Percent</i>
Sows Farrowing					
Dec-Feb ²	2,748	2,836	2,767	101	98
Mar-May ³	2,870	2,943	2,842	99	97
Dec-May ^{2 4}	5,619	5,779	5,610	100	97
Jun-Aug ³	2,878	2,887	2,792	97	97
Sep-Nov	2,889	2,817			
Jun-Nov	5,767	5,704			
Pig Crop					
Dec-Feb ²	23,963	24,794	24,374	102	98
Mar-May	25,509	25,959			
Dec-May ²	49,472	50,752			
Jun-Aug	25,539	25,700			
Sep-Nov	25,492	24,892			
Jun-Nov	51,031	50,592			
	<i>Number</i>	<i>Number</i>	<i>Number</i>	<i>Percent</i>	<i>Percent</i>
Pigs per Litter					
Dec-Feb ²	8.72	8.74	8.81	101	101
Mar-May	8.89	8.82			
Dec-May ²	8.81	8.78			
Jun-Aug	8.87	8.90			
Sep-Nov	8.82	8.83			
Jun-Nov	8.85	8.87			

¹ May not add due to rounding.

² December preceding year.

³ Intentions for 2003.

⁴ Actual farrowings for December 2002-February 2003 plus intentions for March-May 2003.

Pigs per Litter: By Size of Operation, United States, 2002-2003

Pig Crop	Pigs per Litter on Operations Having					
	1-99 Head	100-499 Head	500-999 Head	1,000-1,999 Head	2,000-4,999 Head	5,000+ Head
	<i>Number</i>	<i>Number</i>	<i>Number</i>	<i>Number</i>	<i>Number</i>	<i>Number</i>
2002						
Dec-Feb ¹	7.30	7.80	8.30	8.60	8.70	8.90
Mar-May	7.70	8.10	8.30	8.70	8.70	8.90
Jun-Aug	7.60	7.80	8.40	8.70	8.80	9.00
Sep-Nov	7.50	8.20	8.40	8.60	8.70	9.00
2003						
Dec-Feb ¹	7.60	8.00	8.20	8.70	8.80	8.90

¹ December preceding year.

**Monthly Farrowings: Number of Sows, Pigs per Litter, and Pig Crop,
United States, December-November 2002-2003^{1 2}**

Month	Sows Farrowing		Pigs per Litter		Pig Crop	
	2002	2003	2002	2003	2002	2003
	<i>1,000 Head</i>	<i>1,000 Head</i>	<i>Number</i>	<i>Number</i>	<i>1,000 Head</i>	<i>1,000 Head</i>
Dec ¹	923	908	8.66	8.75	7,994	7,943
Jan	946	931	8.73	8.82	8,257	8,211
Feb	967	928	8.83	8.86	8,543	8,220
Mar	978		8.80		8,608	
Apr	983		8.85		8,700	
May	982		8.81		8,651	
Jun	960		8.89		8,537	
Jul	968		8.89		8,609	
Aug	959		8.92		8,554	
Sep	951		8.85		8,416	
Oct	940		8.83		8,300	
Nov	926		8.83		8,176	
Total	11,483		8.83		101,344	

¹ December preceding year.

² Monthly values may not add to quarterly or annual totals due to rounding.

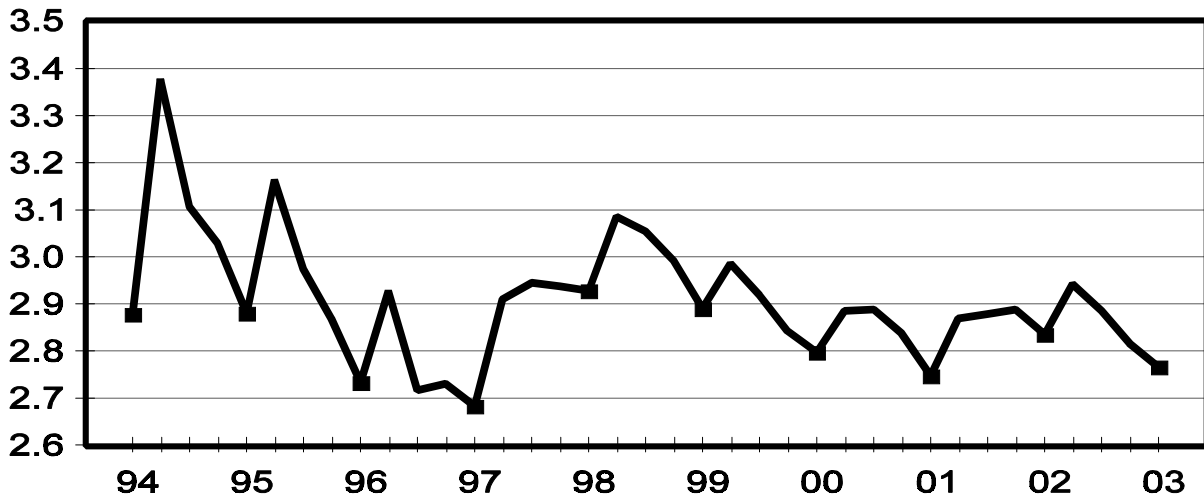
**Monthly Sows and Gilts: Inventory and Number Bred,
United States, December-November 2002-2003¹**

Month	Inventory 1st of Month			Bred during Month		
	2002	2003		2002	2003	
		Number	as % of 2002		Number	as % of 2002
	<i>1,000 Head</i>	<i>1,000 Head</i>	<i>Percent</i>	<i>1,000 Head</i>	<i>1,000 Head</i>	<i>Percent</i>
Dec ¹	6,031	5,850	97	1,194	1,165	98
Jan	6,022	5,835	97	1,190	1,150	97
Feb	6,020	5,810	97	1,156	1,125	97
Mar	6,075	5,830	96	1,181		
Apr	5,980			1,173		
May	5,985			1,170		
Jun	6,030			1,168		
Jul	5,975			1,145		
Aug	5,940			1,120		
Sep	5,890			1,145		
Oct	5,870			1,160		
Nov	5,860			1,170		

¹ December preceding year.

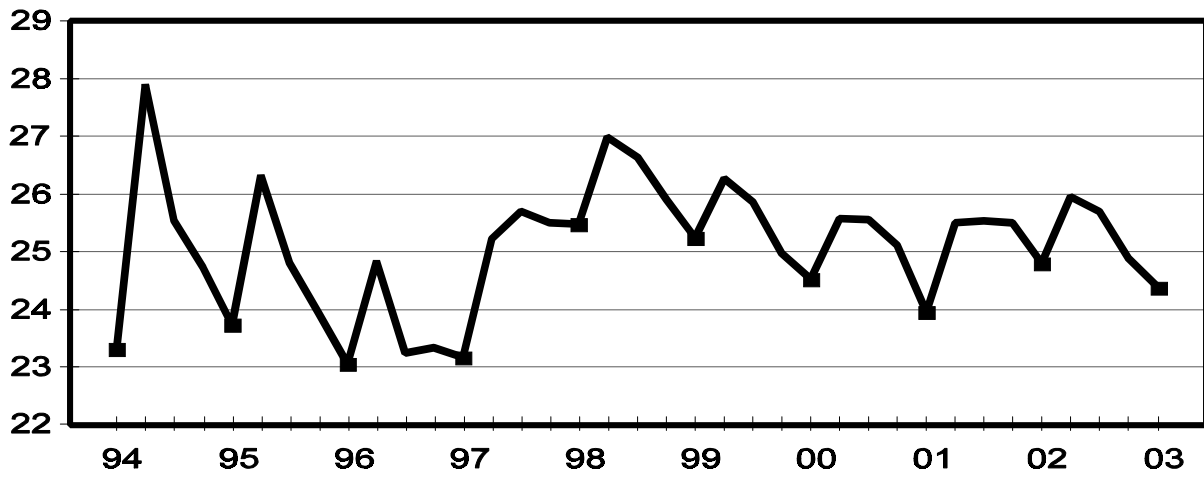
U.S. Quarterly Sows Farrowed December - February

Million Head



U.S. Quarterly Pig Crop December - February

Million Head



**Hogs and Pigs: Breeding, Market, and Total Inventory
by State and United States, March 1, 2002-2003 ¹**

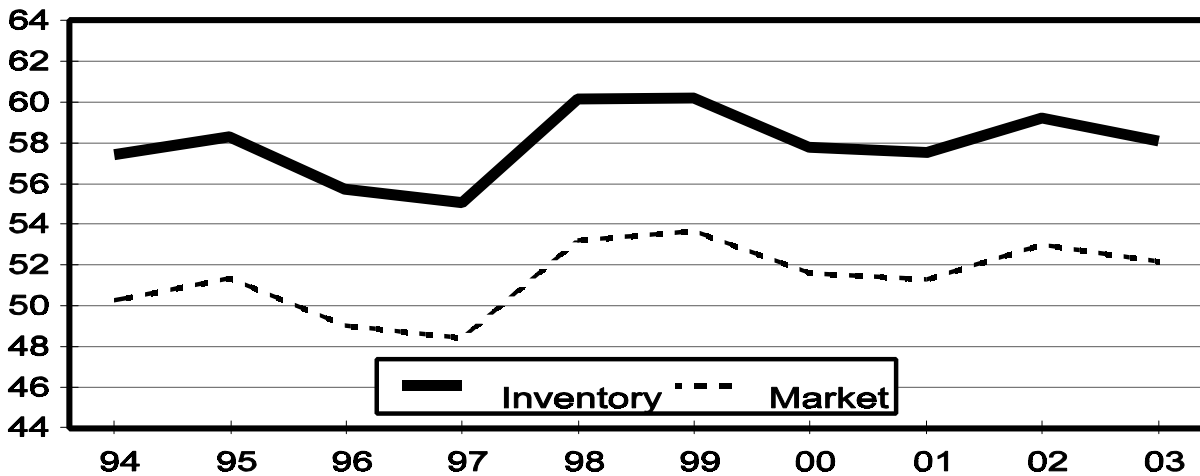
State	Breeding			Market			Total		
	2002	2003		2002	2003		2002	2003	
		Number	as % of 2002		Number	as % of 2002		Number	as % of 2002
	<i>1,000 Head</i>	<i>1,000 Head</i>	<i>Percent</i>	<i>1,000 Head</i>	<i>1,000 Head</i>	<i>Percent</i>	<i>1,000 Head</i>	<i>1,000 Head</i>	<i>Percent</i>
AR	105	75	71	485	200	41	590	275	47
CO	180	120	67	610	590	97	790	710	90
IL	450	420	93	3,750	3,530	94	4,200	3,950	94
IN	340	320	94	2,860	2,780	97	3,200	3,100	97
IA	1,120	1,040	93	13,980	13,860	99	15,100	14,900	99
KS	170	160	94	1,430	1,300	91	1,600	1,460	91
MI	120	100	83	840	770	92	960	870	91
MN	570	590	104	5,230	5,510	105	5,800	6,100	105
MO	370	360	97	2,580	2,590	100	2,950	2,950	100
NE	390	375	96	2,610	2,475	95	3,000	2,850	95
NC	1,000	1,000	100	8,800	8,600	98	9,800	9,600	98
OH	165	160	97	1,305	1,270	97	1,470	1,430	97
OK	330	330	100	1,960	2,130	109	2,290	2,460	107
PA	130	120	92	960	950	99	1,090	1,070	98
SD	150	145	97	1,120	1,145	102	1,270	1,290	102
TX	100	100	100	810	790	98	910	890	98
WI	60	60	100	440	440	100	500	500	100
Oth Sts ²	486	481	99	3,241	3,221	99	3,728	3,702	99
US	6,236	5,956	96	53,011	52,151	98	59,248	58,107	98

¹ May not add due to rounding.

² Individual State estimates not available for the 33 other States.

March 1 Hog Inventory & Market Hogs United States

Million Head



**Market Hogs and Pigs: Inventory Number by Weight Group,
State, and United States, March 1, 2002-2003 ¹**

State	Under 60 Lbs.		60-119 Lbs.		120-179 Lbs.		180 Lbs. and Over	
	2002	2003	2002	2003	2002	2003	2002	2003
	<i>1,000 Head</i>	<i>1,000 Head</i>	<i>1,000 Head</i>	<i>1,000 Head</i>	<i>1,000 Head</i>	<i>1,000 Head</i>	<i>1,000 Head</i>	<i>1,000 Head</i>
AR	250	130	65	20	80	20	90	30
CO	330	305	95	85	70	85	115	115
IL	1,330	1,270	940	860	820	780	660	620
IN	1,040	1,040	720	660	580	560	520	520
IA	4,360	4,300	3,800	3,810	3,220	3,100	2,600	2,650
KS	490	430	270	250	290	250	380	370
MI	310	270	215	190	165	165	150	145
MN	2,070	2,120	1,330	1,320	1,060	1,190	770	880
MO	1,120	1,230	630	570	520	480	310	310
NE	1,070	1,000	680	610	500	470	360	395
NC	3,450	3,350	2,000	2,000	1,850	1,800	1,500	1,450
OH	545	525	310	305	290	280	160	160
OK	860	880	310	380	280	310	510	560
PA	345	340	255	245	200	180	160	185
SD	375	380	295	295	265	270	185	200
TX	265	220	175	210	165	160	205	200
WI	165	165	105	100	90	90	80	85
Oth Sts ²	1,112	1,155	780	745	727	704	622	617
US	19,487	19,110	12,975	12,655	11,172	10,894	9,377	9,492

¹ Weight groups may not add to Market due to rounding.

² Individual State estimates not available for the 33 other States.

**Hogs and Pigs: Breeding, Market, and Total Inventory
by State and United States, June 1, 2001-2002¹**

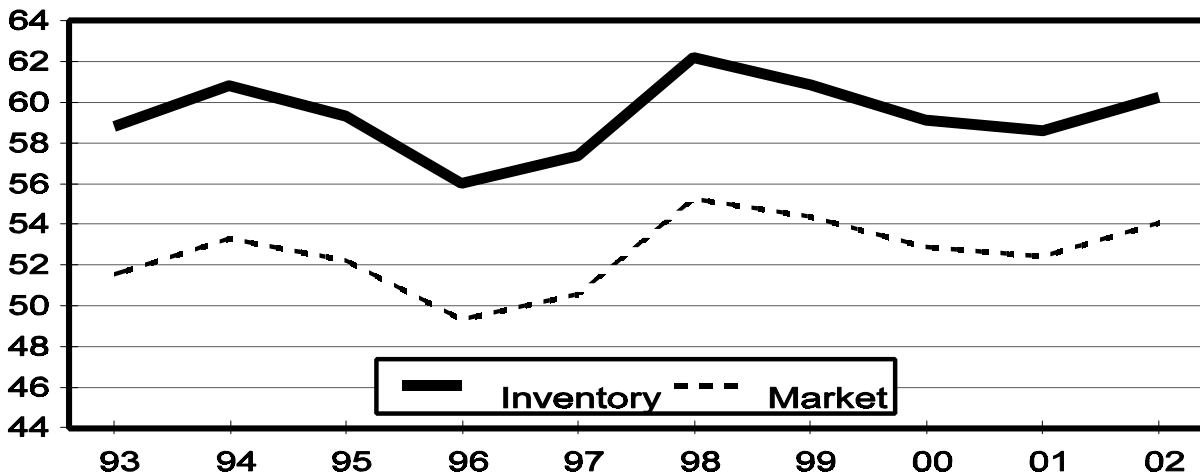
State	Breeding			Market			Total		
	2001	2002		2001	2002		2001	2002	
		Number	as % of 2001		Number	as % of 2001		Number	as % of 2001
	<i>1,000 Head</i>	<i>1,000 Head</i>	<i>Percent</i>	<i>1,000 Head</i>	<i>1,000 Head</i>	<i>Percent</i>	<i>1,000 Head</i>	<i>1,000 Head</i>	<i>Percent</i>
AR	105	100	95	545	495	91	650	595	92
CO	170	150	88	590	600	102	760	750	99
IL	420	450	107	3,680	3,800	103	4,100	4,250	104
IN	350	330	94	2,800	2,870	103	3,150	3,200	102
IA	1,120	1,130	101	13,780	14,470	105	14,900	15,600	105
KS	165	165	100	1,365	1,385	101	1,530	1,550	101
MI	110	110	100	810	810	100	920	920	100
MN	590	580	98	5,210	5,320	102	5,800	5,900	102
MO	390	380	97	2,660	2,670	100	3,050	3,050	100
NE	360	395	110	2,540	2,555	101	2,900	2,950	102
NC	1,000	1,000	100	8,700	8,900	102	9,700	9,900	102
OH	160	170	106	1,300	1,330	102	1,460	1,500	103
OK	330	320	97	1,860	2,120	114	2,190	2,440	111
PA	120	130	108	910	940	103	1,030	1,070	104
SD	140	140	100	1,130	1,130	100	1,270	1,270	100
TX	95	105	111	765	885	116	860	990	115
WI	75	65	87	495	465	94	570	530	93
Oth Sts ²	486	489	101	3,277	3,333	102	3,763	3,823	102
US	6,186	6,209	100	52,417	54,078	103	58,603	60,288	103

¹ May not add due to rounding.

² Individual State estimates not available for the 33 other States.

**June 1 Hog Inventory & Market Hogs
United States**

Million Head



**Market Hogs and Pigs: Inventory Number by Weight Group,
State, and United States, June 1, 2001-2002 ¹**

State	Under 60 Lbs.		60-119 Lbs.		120-179 Lbs.		180 Lbs. and Over	
	2001	2002	2001	2002	2001	2002	2001	2002
	<i>1,000 Head</i>	<i>1,000 Head</i>	<i>1,000 Head</i>	<i>1,000 Head</i>	<i>1,000 Head</i>	<i>1,000 Head</i>	<i>1,000 Head</i>	<i>1,000 Head</i>
AR	190	255	140	65	115	80	100	95
CO	335	305	65	95	75	90	115	110
IL	1,320	1,400	950	970	760	780	650	650
IN	1,040	1,040	680	740	540	570	540	520
IA	4,350	4,570	3,800	4,050	3,080	3,250	2,550	2,600
KS	475	510	295	310	240	245	355	320
MI	315	310	215	205	155	155	125	140
MN	2,140	2,080	1,300	1,380	1,050	1,100	720	760
MO	1,320	1,180	560	640	480	510	300	340
NE	1,050	1,050	650	660	490	470	350	375
NC	3,600	3,600	2,110	2,150	1,620	1,700	1,370	1,450
OH	530	530	325	335	280	290	165	175
OK	850	920	310	300	270	290	430	610
PA	360	345	235	245	175	180	140	170
SD	430	405	280	300	245	250	175	175
TX	270	290	150	235	150	160	195	200
WI	195	165	115	120	100	95	85	85
Oth Sts ²	1,153	1,231	812	788	711	669	602	645
US	19,923	20,186	12,992	13,588	10,536	10,884	8,967	9,420

¹ Weight groups may not add to Market due to rounding.

² Individual State estimates not available for the 33 other States.

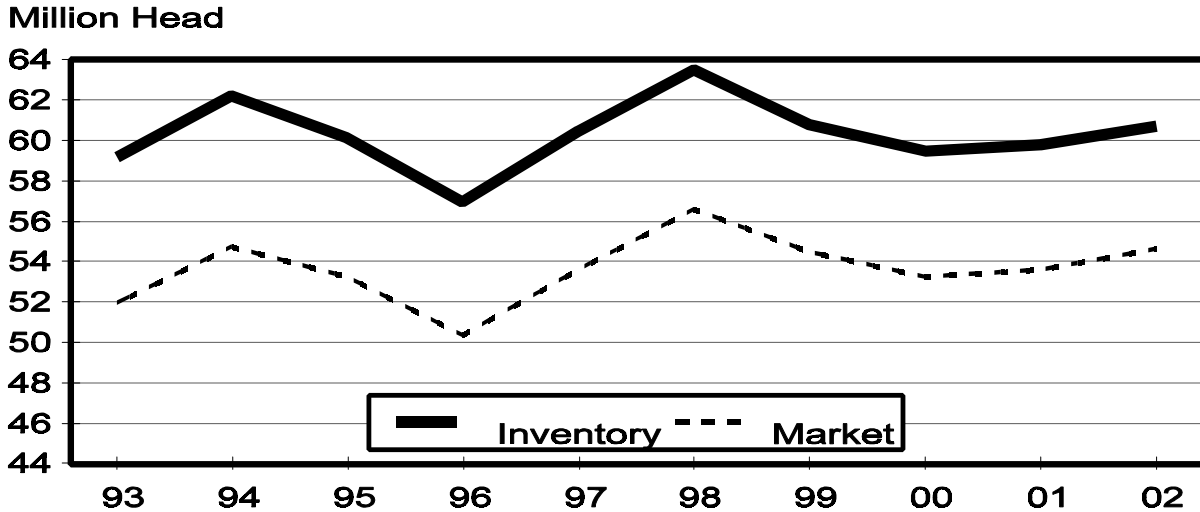
**Hogs and Pigs: Breeding, Market, and Total Inventory
by State and United States, September 1, 2001-2002¹**

State	Breeding			Market			Total		
	2001	2002		2001	2002		2001	2002	
		Number	as % of 2001		Number	as % of 2001		Number	as % of 2001
	<i>1,000 Head</i>	<i>1,000 Head</i>	<i>Percent</i>	<i>1,000 Head</i>	<i>1,000 Head</i>	<i>Percent</i>	<i>1,000 Head</i>	<i>1,000 Head</i>	<i>Percent</i>
AR	100	90	90	555	455	82	655	545	83
CO	175	145	83	605	615	102	780	760	97
IL	420	430	102	3,780	3,820	101	4,200	4,250	101
IN	330	330	100	2,820	2,870	102	3,150	3,200	102
IA	1,120	1,100	98	13,980	14,500	104	15,100	15,600	103
KS	165	160	97	1,435	1,400	98	1,600	1,560	98
MI	110	120	109	860	820	95	970	940	97
MN	590	580	98	5,310	5,520	104	5,900	6,100	103
MO	380	350	92	2,670	2,600	97	3,050	2,950	97
NE	360	360	100	2,590	2,540	98	2,950	2,900	98
NC	1,000	1,000	100	8,900	9,200	103	9,900	10,200	103
OH	160	160	100	1,310	1,330	102	1,470	1,490	101
OK	330	330	100	2,040	2,150	105	2,370	2,480	105
PA	125	125	100	955	945	99	1,080	1,070	99
SD	140	140	100	1,140	1,180	104	1,280	1,320	103
TX	95	100	105	795	900	113	890	1,000	112
WI	75	55	73	485	425	88	560	480	86
Oth Sts ²	483	479	99	3,389	3,400	100	3,872	3,880	100
US	6,158	6,054	98	53,619	54,670	102	59,777	60,725	102

¹ May not add due to rounding.

² Individual State estimates not available for the 33 other States.

September 1 Hog Inventory & Market Hogs United States



**Market Hogs and Pigs: Inventory Number by Weight Group,
State, and United States, September 1, 2001-2002 ¹**

State	Under 60 Lbs.		60-119 Lbs.		120-179 Lbs.		180 Lbs. and Over	
	2001	2002	2001	2002	2001	2002	2001	2002
	<i>1,000 Head</i>	<i>1,000 Head</i>	<i>1,000 Head</i>	<i>1,000 Head</i>	<i>1,000 Head</i>	<i>1,000 Head</i>	<i>1,000 Head</i>	<i>1,000 Head</i>
AR	245	225	110	65	100	75	100	90
CO	340	310	80	95	75	90	110	120
IL	1,380	1,390	930	960	790	790	680	680
IN	1,050	1,050	700	720	550	570	520	530
IA	4,370	4,490	3,910	4,040	3,100	3,160	2,600	2,810
KS	470	485	290	260	275	240	400	415
MI	330	315	225	210	175	160	130	135
MN	2,190	2,170	1,320	1,410	1,060	1,140	740	800
MO	1,140	1,190	630	550	520	470	380	390
NE	1,030	1,000	670	650	510	500	380	390
NC	3,500	3,600	2,200	2,300	1,800	1,800	1,400	1,500
OH	545	540	325	320	270	280	170	190
OK	880	890	340	370	235	340	585	550
PA	375	340	250	250	180	180	150	175
SD	395	400	290	320	260	270	195	190
TX	295	265	180	240	145	195	175	200
WI	195	160	110	100	90	75	90	90
Oth Sts ²	1,181	1,250	878	795	719	684	612	671
US	19,911	20,070	13,438	13,655	10,854	11,019	9,417	9,926

¹ Weight groups may not add to Market due to rounding.

² Individual State estimates not available for the 33 other States.

**Hogs and Pigs: Breeding, Market, and Total Inventory
by State and United States, December 1, 2001-2002 ¹**

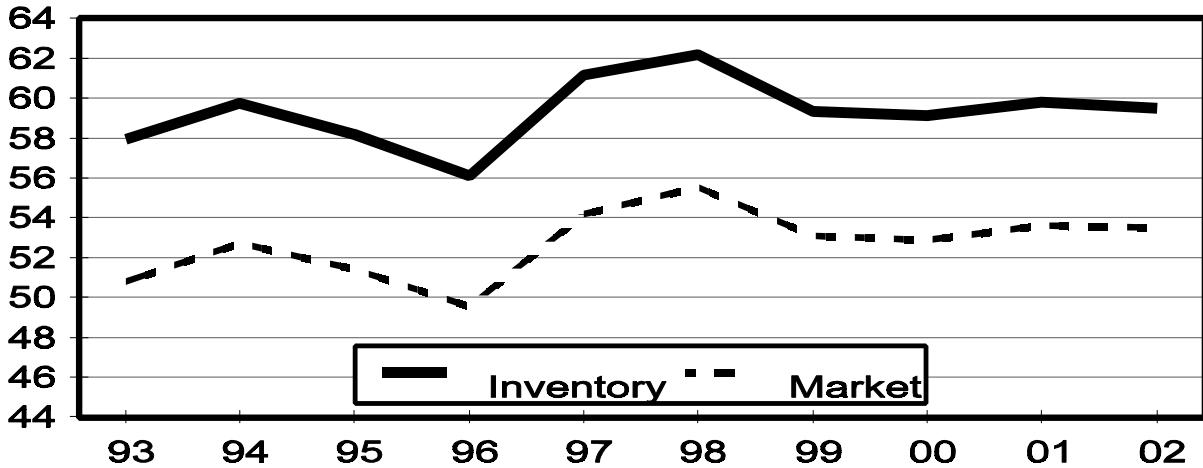
State	Breeding			Market			Total		
	2001	2002		2001	2002		2001	2002	
		Number	as % of 2001		Number	as % of 2001		Number	as % of 2001
	<i>1,000 Head</i>	<i>1,000 Head</i>	<i>Percent</i>	<i>1,000 Head</i>	<i>1,000 Head</i>	<i>Percent</i>	<i>1,000 Head</i>	<i>1,000 Head</i>	<i>Percent</i>
AR	100	80	80	480	225	47	580	305	53
CO	175	160	91	625	630	101	800	790	99
IL	450	430	96	3,800	3,670	97	4,250	4,100	96
IN	340	330	97	2,860	2,870	100	3,200	3,200	100
IA	1,130	1,050	93	14,270	14,450	101	15,400	15,500	101
KS	170	160	94	1,400	1,370	98	1,570	1,530	97
MI	110	100	91	850	760	89	960	860	90
MN	570	580	102	5,230	5,420	104	5,800	6,000	103
MO	380	360	95	2,620	2,590	99	3,000	2,950	98
NE	370	365	99	2,530	2,585	102	2,900	2,950	102
NC	1,000	1,000	100	8,800	8,700	99	9,800	9,700	99
OH	160	155	97	1,270	1,285	101	1,430	1,440	101
OK	340	330	97	2,140	2,160	101	2,480	2,490	100
PA	130	125	96	930	955	103	1,060	1,080	102
SD	145	140	97	1,145	1,170	102	1,290	1,310	102
TX	100	105	105	800	825	103	900	930	103
WI	65	60	92	475	460	97	540	520	96
Oth Sts ²	474	482	102	3,369	3,376	100	3,844	3,858	100
US	6,209	6,012	97	53,594	53,501	100	59,804	59,513	100

¹ May not add due to rounding.

² Individual State estimates not available for the 33 other States.

December 1 Hog Inventory & Market Hogs United States

Million Head



**Market Hogs and Pigs: Inventory Number by Weight Group,
State, and United States, December 1, 2001-2002 ¹**

State	Under 60 Lbs.		60-119 Lbs.		120-179 Lbs.		180 Lbs. and Over	
	2001	2002	2001	2002	2001	2002	2001	2002
	<i>1,000 Head</i>	<i>1,000 Head</i>	<i>1,000 Head</i>	<i>1,000 Head</i>	<i>1,000 Head</i>	<i>1,000 Head</i>	<i>1,000 Head</i>	<i>1,000 Head</i>
AR	230	115	75	40	75	35	100	35
CO	350	350	90	90	75	80	110	110
IL	1,380	1,320	920	890	830	800	670	660
IN	1,040	1,010	710	690	580	620	530	550
IA	4,510	4,400	3,900	3,950	3,060	3,200	2,800	2,900
KS	480	440	290	310	250	290	380	330
MI	315	285	205	180	170	145	160	150
MN	2,130	2,110	1,250	1,330	1,030	1,080	820	900
MO	1,140	1,190	600	530	510	480	370	390
NE	1,030	1,010	610	670	500	500	390	405
NC	3,500	3,450	2,020	2,050	1,730	1,700	1,550	1,500
OH	520	525	310	310	265	275	175	175
OK	860	910	350	330	300	250	630	670
PA	365	340	235	250	180	185	150	180
SD	410	370	290	310	250	265	195	225
TX	260	240	140	230	165	180	235	175
WI	180	165	105	110	100	95	90	90
Oth Sts ²	1,208	1,231	824	784	674	701	663	660
US	19,908	19,461	12,924	13,054	10,744	10,881	10,018	10,105

¹ Weight groups may not add to Market due to rounding.

² Individual State estimates not available for the 33 other States.

**Farrowings: Number of Sows, Pigs per Litter, and Pig Crop
by State and United States, December-February 2002-2003^{1 2}**

State	Sows Farrowing			Pigs per Litter		Pig Crop ³		
	2002	2003		2002	2003	2002	2003	
		Number	as % of 2002				Number	as % of 2002
	<i>1,000 Head</i>	<i>1,000 Head</i>	<i>Percent</i>	<i>Number</i>	<i>Number</i>	<i>1,000 Head</i>	<i>1,000 Head</i>	<i>Percent</i>
AR	52	41	79	9.20	9.70	478	398	83
CO	79	75	95	8.40	8.35	664	626	94
IL	210	200	95	8.55	8.85	1,796	1,770	99
IN	155	150	97	8.70	8.85	1,349	1,328	98
IA	420	410	98	8.60	8.50	3,612	3,485	96
KS	79	76	96	8.40	8.50	664	646	97
MI	50	43	86	9.00	8.80	450	378	84
MN	260	265	102	8.80	8.80	2,288	2,332	102
MO	170	170	100	8.85	8.85	1,505	1,505	100
NE	170	175	103	8.80	8.75	1,496	1,531	102
NC	540	530	98	8.95	9.00	4,833	4,770	99
OH	74	73	99	8.95	8.90	662	650	98
OK	170	170	100	8.75	8.80	1,488	1,496	101
PA	53	49	92	8.80	9.30	466	456	98
SD	70	64	91	8.90	9.05	623	579	93
TX	43	43	100	9.00	8.75	387	376	97
WI	28	29	104	8.45	8.60	237	249	105
Oth Sts ⁴	213	204	96	8.43	8.80	1,796	1,799	100
US	2,836	2,767	98	8.74	8.81	24,794	24,374	98

¹ May not add due to rounding.

² December preceding year.

³ Number of pigs born December-February on hand March 1, or had been sold.

⁴ Individual State estimates not available for the 33 other States.

**Farrowings: Number of Sows, Pigs per Litter, and Pig Crop
by State and United States, March-May 2001-2003 ¹**

State	Sows Farrowing				Pigs per Litter		Pig Crop ²		
	2001	2002	2003 ³		2001	2002	2001	2002	
			Number	as % of 2002				Number	as % of 2001
	<i>1,000 Head</i>	<i>1,000 Head</i>	<i>1,000 Head</i>	<i>Percent</i>	<i>Number</i>	<i>Number</i>	<i>1,000 Head</i>	<i>1,000 Head</i>	<i>Percent</i>
AR	54	52	33	63	9.00	9.60	486	499	103
CO	79	76	69	91	8.30	8.50	656	646	98
IL	210	225	205	91	8.85	8.60	1,859	1,935	104
IN	155	155	145	94	8.90	8.80	1,380	1,364	99
IA	450	470	450	96	8.75	8.55	3,938	4,019	102
KS	77	82	80	98	8.65	8.75	666	718	108
MI	50	50	46	92	8.90	8.85	445	443	100
MN	270	270	270	100	9.05	8.95	2,444	2,417	99
MO	185	180	170	94	8.90	8.95	1,647	1,611	98
NE	160	175	175	100	8.80	9.00	1,408	1,575	112
NC	540	550	550	100	9.00	9.00	4,860	4,950	102
OH	73	75	73	97	8.70	8.95	635	671	106
OK	165	165	170	103	9.35	8.85	1,543	1,460	95
PA	52	54	52	96	8.90	8.70	463	470	102
SD	66	70	69	99	8.90	8.80	587	616	105
TX	40	45	50	111	8.80	8.90	352	401	114
WI	33	29	27	93	8.60	8.55	284	248	87
Oth Sts ⁴	211	220	208	95	8.78	8.69	1,856	1,916	103
US	2,870	2,943	2,842	97	8.89	8.82	25,509	25,959	102

¹ May not add due to rounding.

² Number of pigs born March-May that were still on hand June 1, or had been sold.

³ Intentions.

⁴ Individual State estimates not available for the 33 other States.

**Farrowings: Number of Sows, Pigs per Litter, and Pig Crop
by State and United States, June-August 2001-2003 ¹**

State	Sows Farrowing				Pigs per Litter		Pig Crop ²		
	2001	2002	2003 ³		2001	2002	2001	2002	
			Number	as % of 2002				Number	as % of 2001
	<i>1,000 Head</i>	<i>1,000 Head</i>	<i>1,000 Head</i>	<i>Percent</i>	<i>Number</i>	<i>Number</i>	<i>1,000 Head</i>	<i>1,000 Head</i>	<i>Percent</i>
AR	57	52	30	58	9.30	9.55	530	497	94
CO	79	75	65	87	8.45	8.35	668	626	94
IL	210	210	200	95	8.65	8.75	1,817	1,838	101
IN	150	155	145	94	8.90	8.70	1,335	1,349	101
IA	440	430	440	102	8.60	8.80	3,784	3,784	100
KS	78	82	80	98	8.70	8.75	679	718	106
MI	52	55	42	76	9.10	9.05	473	498	105
MN	265	265	270	102	9.00	8.85	2,385	2,345	98
MO	180	175	160	91	8.90	8.90	1,602	1,558	97
NE	155	165	175	106	8.70	9.00	1,349	1,485	110
NC	550	560	550	98	9.10	9.10	5,005	5,096	102
OH	75	78	73	94	8.90	8.90	668	694	104
OK	175	170	170	100	9.40	9.05	1,645	1,539	94
PA	54	53	51	96	8.80	9.00	475	477	100
SD	66	69	64	93	8.85	9.05	584	624	107
TX	44	50	48	96	8.70	8.95	383	448	117
WI	36	26	26	100	8.15	8.35	293	217	74
Oth Sts ⁴	212	217	203	94	8.79	8.80	1,864	1,907	102
US	2,878	2,887	2,792	97	8.87	8.90	25,539	25,700	101

¹ May not add due to rounding.

² Number of pigs born June-August on hand September 1, or had been sold.

³ Intentions.

⁴ Individual State estimates not available for the 33 other States.

**Farrowings: Number of Sows, Pigs per Litter, and Pig Crop
by State and United States, September-November 2001-2002¹**

State	Sows Farrowing			Pigs per Litter		Pig Crop ²		
	2001	2002		2001	2002	2001	2002	
		Number	as % of 2001				Number	as % of 2001
	<i>1,000 Head</i>	<i>1,000 Head</i>	<i>Percent</i>	<i>Number</i>	<i>Number</i>	<i>1,000 Head</i>	<i>1,000 Head</i>	<i>Percent</i>
AR	51	44	86	9.50	9.80	485	431	89
CO	82	75	91	8.50	8.60	697	645	93
IL	220	210	95	8.60	8.65	1,892	1,817	96
IN	155	150	97	8.70	8.75	1,349	1,313	97
IA	460	430	93	8.70	8.50	4,002	3,655	91
KS	81	79	98	8.55	8.70	693	687	99
MI	46	42	91	9.15	9.10	421	382	91
MN	265	270	102	9.00	8.90	2,385	2,403	101
MO	180	175	97	8.80	8.80	1,584	1,540	97
NE	165	170	103	8.70	9.05	1,436	1,539	107
NC	530	530	100	9.00	9.00	4,770	4,770	100
OH	74	73	99	8.80	8.85	651	646	99
OK	170	165	97	9.10	9.10	1,547	1,502	97
PA	55	53	96	8.80	9.00	484	477	99
SD	71	61	86	8.95	9.00	635	549	86
TX	41	46	112	8.90	8.85	365	407	112
WI	30	28	93	8.45	8.70	254	244	96
Oth Sts ³	213	216	102	8.66	8.71	1,842	1,885	102
US	2,889	2,817	98	8.82	8.83	25,492	24,892	98

¹ May not add due to rounding.

² Number of pigs born September-November that were still on hand December 1 or had been sold.

³ Individual State estimates not available for the 33 other States.

Reliability of March 1 Hogs and Pigs Estimates

Survey Procedures: A random sample of roughly 12,100 U.S. producers was surveyed to provide data for these estimates. Survey procedures ensured that all hog and pig producers, regardless of size, had a chance to be included in the survey. Large producers were sampled more heavily than small operations. Data were collected from about 9,800 operations, 81 percent of the total sample, during the first-half of March by mail, telephone, and face-to-face personal interviews. Regardless of when operations responded, they were asked to report inventories as of March 1.

Estimation Procedures: These hogs and pigs estimates were prepared by the Agricultural Statistics Board after reviewing recommendations and analysis submitted by each State office. National and State survey data were reviewed for reasonableness with each other and with estimates from past years using a balance sheet. The balance sheet begins with the previous inventory estimate, adds the estimates of births and imports, and subtracts the estimates of slaughter, exports, and deaths. This indicated ending inventory level is compared to the Agricultural Statistics Board estimate for reasonableness.

Revision Policy: Revisions to previous estimates are made to improve quarter to quarter relationships. Estimates for the previous four quarters are subject to revision when current estimates are made. In December, estimates for all quarters of the current and previous year are reviewed. The reviews are primarily based on hog check-off receipts and slaughter. Estimates will also be reviewed after data from the Department of Agriculture five-year Census of Agriculture are available. No revisions will be made after that date.

Reliability: Since all operations raising hogs are not included in the sample, survey estimates are subject to sampling variability. Survey results are also subject to non-sampling errors such as omissions, duplication, and mistakes in reporting, recording, and processing the data. The affects of these errors cannot be measured directly. They are minimized through rigid quality controls in the data collection process and through a careful review of all reported data for consistency and reasonableness.

To assist users in evaluating the reliability of the estimates in this report, the "Root Mean Square Error" is shown for selected items in the following table. The "**Root Mean Square Error**" is a statistical measure based on past performance and is computed using the difference between first and final estimates. The "Root Mean Square Error" for hog inventory estimates over the past 20 quarters is 1.0 percent. This means that chances are 2 out of 3 that the final estimate will not be above or below the current estimate of 58.1 million head by more than 1.0 percent. Chances are 9 out of 10 that the difference will not exceed 1.8 percent.

Reliability of March 1 Hog Estimates ¹

Item	Root Mean Square Error	90% Confidence Level		Difference Between First and Latest Estimates			Quarters	
				Average	Smallest	Largest	First Above Latest	First Below Latest
				<i>1,000 Head</i>	<i>1,000 Head</i>	<i>1,000 Head</i>	<i>Number</i>	<i>Number</i>
All Hogs & Pigs	1.0	1.8	1,046	507	40	1,230	7	13
Pig Crop	1.4	2.4	585	255	0	933	11	9
Expected Farrowings								
Next Quarter	1.8	3.1	88	34	1	158	11	9
Following Quarter	2.2	3.8	106	50	1	146	12	8

¹ Based on quarterly records for the past 20 quarters.

Index

Page

Farrowings: Number of Sows, Pig Crop, and Pigs per Litter, United States	5
Farrowings: Number of Sows, Pigs per Litter, and Pig Crop, by State and United States, December-February	16
Farrowings: Number of Sows, Pigs per Litter, and Pig Crop, by State and United States, June-August	18
Farrowings: Number of Sows, Pigs per Litter, and Pig Crop, by State and United States, March-May	17
Farrowings: Number of Sows, Pigs per Litter, and Pig Crop, by State and United States, September-November	19
Hogs and Pigs: Breeding, Market, and Total Inventory by State and United States, December 1	14
Hogs and Pigs: Breeding, Market, and Total Inventory by State and United States, June 1	10
Hogs and Pigs: Breeding, Market, and Total Inventory by State and United States, March 1	8
Hogs and Pigs: Breeding, Market, and Total Inventory by State and United States, September 1	12
Hogs and Pigs: Inventory Number by Class, Weight Group, and Quarter, United States	4
Market Hogs and Pigs: Inventory Number by Weight Group, State, and United States, December 1	15
Market Hogs and Pigs: Inventory Number by Weight Group, State, and United States, June 1	11
Market Hogs and Pigs: Inventory Number by Weight Group, State, and United States, March 1	9
Market Hogs and Pigs: Inventory Number by Weight Group, State, and United States, September 1	13
Monthly Farrowings: Number of Sows, Pigs per Litter, and Pig Crop, United States, December-November	6
Monthly Sows and Gilts: Inventory and Number Bred, United States, December-November	6
Pigs per Litter: By Size of Operation, United States	5
Reliability of Hogs and Pigs Estimates	20

The next "Monthly Hogs and Pigs" report will be released at 3 p.m. ET on April 25, 2003.

The next "Quarterly Hogs and Pigs" report will be released at 3 p.m. ET on June 27, 2003.

The United States Department of Agriculture (USDA) prohibits discrimination in all its programs on the basis of race, color, national origin, gender, religion, age, disability, political beliefs, sexual orientation, and marital or family status. (Not all prohibited bases apply to all programs.) Persons with disabilities who require alternative means for communication of program information (braille, large print, audiotape, etc.) should contact the USDA's TARGET Center at 202-720-2600 (voice and TDD).

To file a complaint of discrimination, write USDA, Director, Office of Civil Rights, Room 326-W, Whitten Building, 1400 Independence Avenue, SW, Washington, D.C., 20250-9410, or call 202-720-5964 (voice or TDD). USDA is an equal opportunity provider and employer.

ACCESS TO REPORTS!!

For your convenience, there are several ways to obtain NASS reports, data products, and services:

INTERNET ACCESS

All NASS reports are available free of charge on the worldwide Internet. For access, connect to the Internet and go to the NASS Home Page at <http://www.usda.gov/nass/>. Select "Today's Reports" or Publications and then Reports Calendar or Publications and then Search, by Title or Subject.

E-MAIL SUBSCRIPTION

All NASS reports are available by subscription free of charge direct to your e-mail address. Starting with the NASS Home Page at <http://www.usda.gov/nass/>, click on **Publications**, then click on the **Subscribe by E-mail** button which takes you to the page describing e-mail delivery of reports. Finally, click on **Go to the Subscription Page** and follow the instructions.

AUTOFAX ACCESS

NASSFax service is available for some reports from your fax machine. Please call 202-720-2000, using the handset attached to your fax. Respond to the voice prompts. Document 0411 is a list of available reports.

PRINTED REPORTS OR DATA PRODUCTS

CALL OUR TOLL-FREE ORDER DESK: 800-999-6779 (U.S. and Canada)
Other areas, please call 703-605-6220 FAX: 703-605-6900
(Visa, MasterCard, check, or money order acceptable for payment.)

ASSISTANCE

For **assistance** with general agricultural statistics or further information about NASS or its products or services, contact the **Agricultural Statistics Hotline** at **800-727-9540**, 7:30 a.m. to 4:00 p.m. ET, or e-mail: nass@nass.usda.gov.
