

# Monthly Hogs and Pigs

Released May 30, 2003, by the National Agricultural Statistics Service (NASS), Agricultural Statistics Board, U.S. Department of Agriculture. For information on "Monthly Hogs and Pigs" call Dan Lofthus at 202-720-3106, office hours 7:30 a.m. to 4:00 p.m. ET.

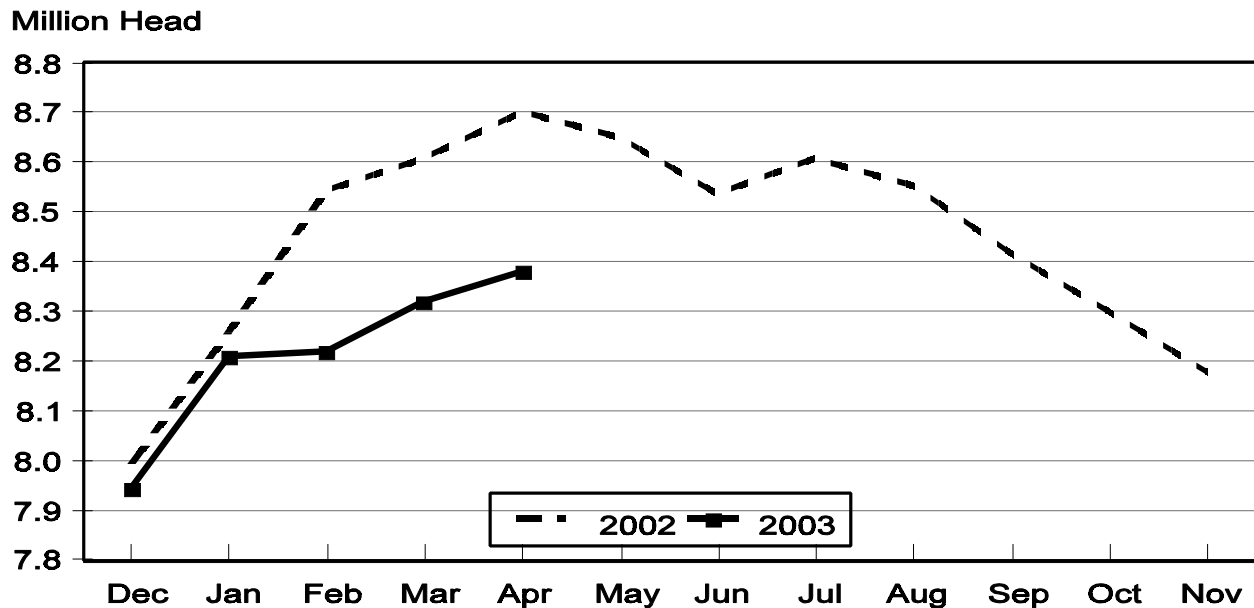
## April Pig Crop Down 4 Percent

The April 2003 U.S. pig crop at 8.38 million head, was 4 percent below the previous year. Sows farrowing during this period totaled 944 thousand head, 4 percent below last year. The average pigs per litter for April increased to 8.88, compared to 8.85 last year.

The U.S. inventory of sows and gilts on May 1, 2003, was 5.80 million head, down 3 percent from May 1, 2002.

U.S. sows and gilts bred during April totaled 1.15 million head, down 2 percent from the previous year.

## U.S. Monthly Pig Crop



### Special Note

Monthly farrowing and pig crop estimates are preliminary and may be revised in the Quarterly Hogs and Pigs Reports. Various factors can require revisions, such as sample variability, difference in reporting time-frame (monthly vs. quarterly), and pre-weaning and post-weaning death loss. Please refer to the Revision Policy on Page 3 of this report for more information.

**Monthly Farrowings: Number of Sows, Pigs per Litter, and Pig Crop,  
United States December-November 2002-2003<sup>1 2</sup>**

Month	Sows Farrowing		Pigs per Litter		Pig Crop	
	2002	2003	2002	2003	2002	2003
	<i>1,000 Head</i>	<i>1,000 Head</i>	<i>Number</i>	<i>Number</i>	<i>1,000 Head</i>	<i>1,000 Head</i>
Dec <sup>1</sup>	923	908	8.66	8.75	7,994	7,943
Jan	946	931	8.73	8.82	8,257	8,211
Feb	967	928	8.83	8.86	8,543	8,220
Mar	978	940	8.80	8.85	8,608	8,319
Apr	983	944	8.85	8.88	8,700	8,382
May	982		8.81		8,651	
Jun	960		8.89		8,537	
Jul	968		8.89		8,609	
Aug	959		8.92		8,554	
Sep	951		8.85		8,416	
Oct	940		8.83		8,300	
Nov	926		8.83		8,176	
Total	11,483		8.83		101,344	

<sup>1</sup> December preceding year.

<sup>2</sup> Monthly values may not add to quarterly or annual totals due to rounding.

**Monthly Sows and Gilts: Inventory and Number Bred,  
United States December-November 2002-2003<sup>1</sup>**

Month	Inventory 1st of Month			Bred during Month		
	2002	2003		2002	2003	
		Number	as % of 2002		Number	as % of 2002
	<i>1,000 Head</i>	<i>1,000 Head</i>	<i>Percent</i>	<i>1,000 Head</i>	<i>1,000 Head</i>	<i>Percent</i>
Dec <sup>1</sup>	6,031	5,850	97	1,194	1,165	98
Jan	6,022	5,835	97	1,190	1,150	97
Feb	6,020	5,810	97	1,156	1,125	97
Mar	6,075	5,830	96	1,181	1,145	97
Apr	5,980	5,795	97	1,173	1,150	98
May	5,985	5,800	97	1,170		
Jun	6,030			1,168		
Jul	5,975			1,145		
Aug	5,940			1,120		
Sep	5,890			1,145		
Oct	5,870			1,160		
Nov	5,860			1,170		

<sup>1</sup> December preceding year.

**Survey Procedures:** A random sample of 2,700 U.S. producers from contractors to independent producers were used to provide data for these estimates. Survey procedures ensured that all breeding and farrowing operations, regardless of size, had a chance to be included in the survey. Large producers were sampled more heavily than small operations. Data were collected during the first-half of the month by mail, telephone, and face-to-face personal interviews. Operations were asked to provide information on sow and gilt inventories as of the first of the month, sows and gilts bred during the previous month, sows and gilts farrowed during the previous month, and the pig crop from these litters.

**Revision Policy:** Revisions to previous monthly estimates are made during the quarterly report. These revisions are to improve month to month, and quarter to quarter relationships. In December, estimates for all months and quarters of the current and previous year are reviewed. The reviews are primarily based on hog check-off receipts and slaughter. Estimates will also be reviewed after data from the Department of Agriculture five-year Census of Agriculture are available. No revisions will be made after that date.

**Reliability:** Since all operations with sow and gilt inventory are not included in the sample, survey estimates are subject to sampling variability. Survey results are also subject to non-sampling errors such as omissions, duplication, and mistakes in reporting, recording, and processing the data. The affects of these errors cannot be measured directly. They are minimized through rigid quality controls in the data collection process and through a careful review of all reported data for consistency and reasonableness.

The next "Quarterly Hogs and Pigs" report will be released at 3 p.m. ET on June 27, 2003.

The next "Monthly Hogs and Pigs" report will be released at 3 p.m. ET on July 25, 2003.

The United States Department of Agriculture (USDA) prohibits discrimination in all its programs on the basis of race, color, national origin, gender, religion, age, disability, political beliefs, sexual orientation, and marital or family status. (Not all prohibited bases apply to all programs.) Persons with disabilities who require alternative means for communication of program information (braille, large print, audiotape, etc.) should contact the USDA's TARGET Center at 202-720-2600 (voice and TDD).

To file a complaint of discrimination, write USDA, Director, Office of Civil Rights, Room 326-W, Whitten Building, 1400 Independence Avenue, SW, Washington, D.C., 20250-9410, or call 202-720-5964 (voice or TDD). USDA is an equal opportunity provider and employer.

## **ACCESS TO REPORTS!!**

---

For your convenience, there are several ways to obtain NASS reports, data products, and services:

### **INTERNET ACCESS**

All NASS reports are available free of charge on the worldwide Internet. For access, connect to the Internet and go to the NASS Home Page at: <http://www.usda.gov/nass/>. Select "Today's Reports" or Publications and then Reports Calendar or Publications and then Search, by Title or Subject.

### **E-MAIL SUBSCRIPTION**

All NASS reports are available by subscription free of charge direct to your e-mail address. Starting with the NASS Home Page at <http://www.usda.gov/nass/>, click on **Publications**, then click on the **Subscribe by E-mail** button which takes you to the page describing e-mail delivery of reports. Finally, click on **Go to the Subscription Page** and follow the instructions.

### **AUTOFAX ACCESS**

NASSFax service is available for some reports from your fax machine. Please call 202-720-2000, using the handset attached to your fax. Respond to the voice prompts. Document 0411 is a list of available reports.

-----  
**PRINTED REPORTS OR DATA PRODUCTS**

**CALL OUR TOLL-FREE ORDER DESK: 800-999-6779 (U.S. and Canada)**  
**Other areas, please call 703-605-6220      FAX: 703-605-6900**  
**(Visa, MasterCard, check, or money order acceptable for payment.)**  
-----

### **ASSISTANCE**

For **assistance** with general agricultural statistics or further information about NASS or its products or services, contact the **Agricultural Statistics Hotline** at **800-727-9540**, 7:30 a.m. to 4:00 p.m. ET, or e-mail: [nass@nass.usda.gov](mailto:nass@nass.usda.gov).

---