

Released September 26, 2003, by the National Agricultural Statistics Service (NASS), Agricultural Statistics Board, U.S. Department of Agriculture. For information on "Quarterly Hogs and Pigs" call Dan Lofthus at 202-720-3106, office hours 7:30 a.m. to 4:00 p.m. ET.

U.S. Hog Inventory Down 2 Percent

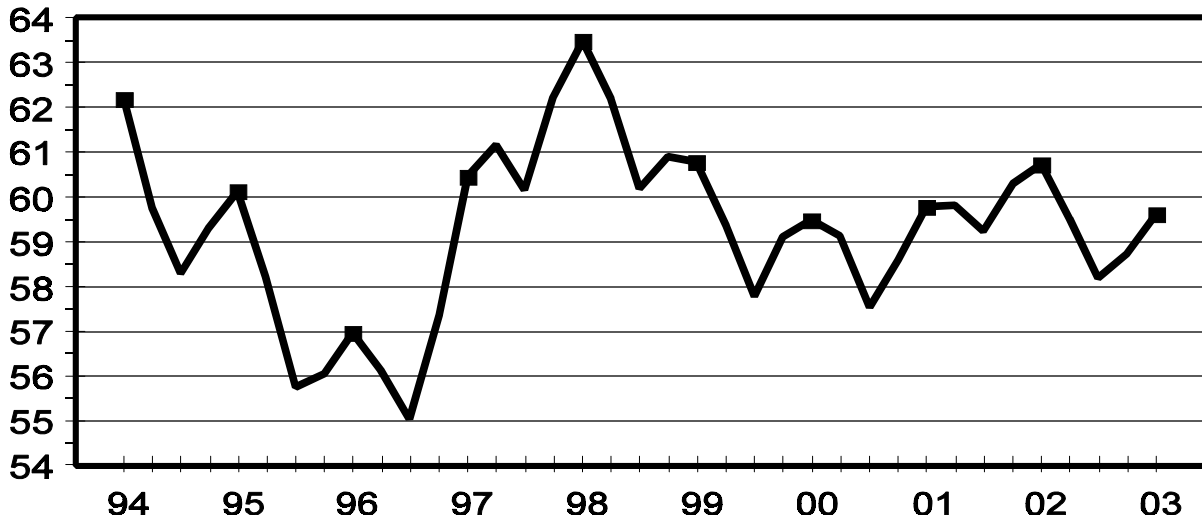
U.S. inventory of all hogs and pigs on September 1, 2003, was 59.6 million head. This was 2 percent below September 1, 2002, but 2 percent above June 1, 2003.

Breeding inventory, at 5.88 million head, was down 3 percent from September 1, 2002, and 1 percent below last quarter. **Market hog inventory**, at 53.7 million head, was 2 percent below last year, but 2 percent above last quarter.

The June-August 2003 U.S. pig crop, at 25.2 million head, was 2 percent less than both 2002 and 2001. Sows farrowing during this period totaled 2.83 million head, 2 percent below last year. The sows farrowed during this quarter represented 48 percent of the breeding herd. The average pigs per litter was 8.90 pigs saved per litter for the June-August 2003 period, equivalent to last year. Pigs saved per litter by size of operation ranged from 7.60 for operations with 1-99 hogs to 9.00 for operations with more than 5,000 hogs and pigs.

U.S. Quarterly Hogs and Pigs Inventory September 1

Million Head



U.S. hog producers intend to have 2.80 million sows farrow during the September-November 2003 quarter, 1 percent below the actual farrowings during the same period in 2002 and 3 percent below 2001. Intended farrowings for December 2003-February 2004, at 2.77 million sows, are 2 percent below the same period in 2002, but 1 percent above 2001.

The total number of hogs under contract, owned by operations with over 5,000 head, but raised by contractees, accounted for 35 percent of the total U.S. hog inventory, unchanged from last year.

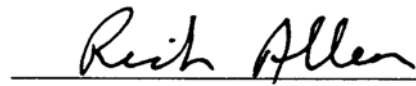
Revisions

All inventory and pig crop estimates for September 2002 through June 2003 were reviewed using final pig crop official slaughter, death loss, and updated import and export data. Based on the findings of this review no revisions were necessary to total hog inventory or pig crop in any quarter.

This report was approved on September 26, 2003.



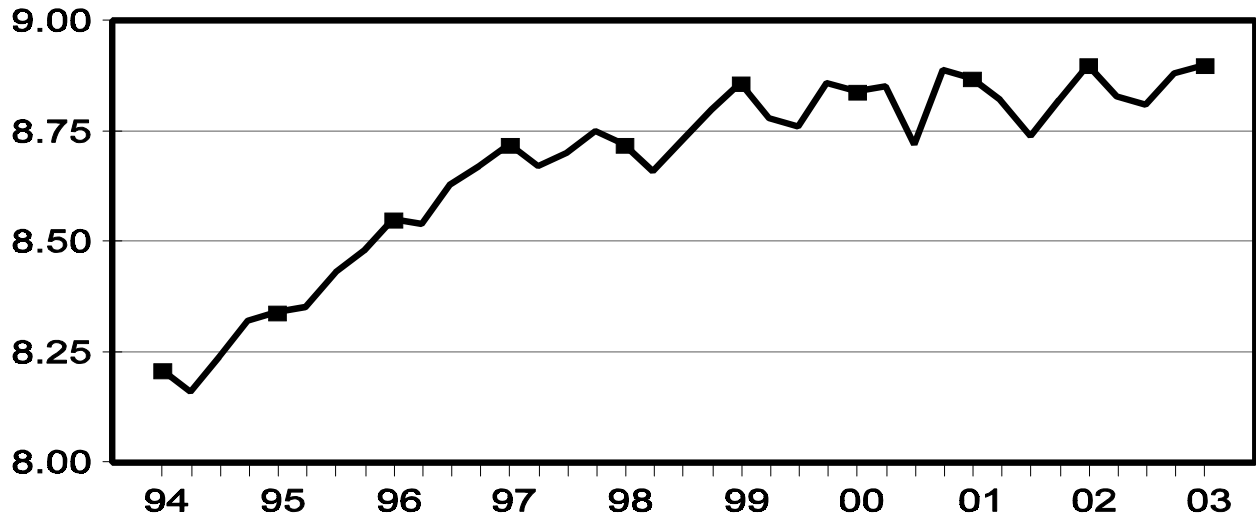
Acting Secretary of
Agriculture
James R. Moseley



Agricultural Statistics Board
Chairperson
Rich Allen

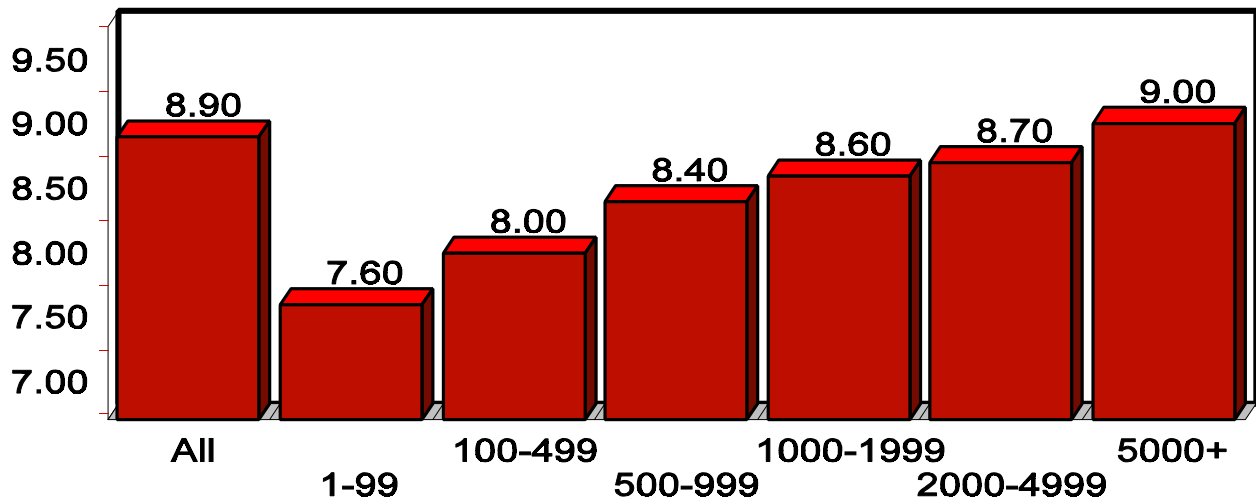
U.S. Quarterly Litter Rate June - August

Number Head



U.S. Pigs per Litter By Size of Operation, June - August 2003

Number Head



**Hogs and Pigs: Inventory Number by Class, Weight Group,
and Quarter, United States, 2001-2003 ¹**

Item	2001	2002	2003	2003 as % of	
				2001	2002
	<i>1,000 Head</i>	<i>1,000 Head</i>	<i>1,000 Head</i>	<i>Percent</i>	<i>Percent</i>
March 1 Inventory					
All Hogs and Pigs	57,524	59,248	58,187	101	98
Kept for Breeding	6,232	6,236	5,956	96	96
Market	51,292	53,011	52,231	102	99
Market Hogs and Pigs by Weight Groups					
Under 60 Pounds	18,737	19,487	19,110	102	98
60-119 Pounds	12,417	12,975	12,655	102	98
120-179 Pounds	10,805	11,172	10,944	101	98
180 Pounds and Over	9,334	9,377	9,522	102	102
June 1 Inventory					
All Hogs and Pigs	58,603	60,288	58,736	100	97
Kept for Breeding	6,186	6,209	5,940	96	96
Market	52,417	54,078	52,796	101	98
Market Hogs and Pigs by Weight Groups					
Under 60 Pounds	19,923	20,186	19,617	98	97
60-119 Pounds	12,992	13,588	13,113	101	97
120-179 Pounds	10,536	10,884	10,727	102	99
180 Pounds and Over	8,967	9,420	9,339	104	99
September 1 Inventory					
All Hogs and Pigs	59,777	60,725	59,623	100	98
Kept for Breeding	6,158	6,054	5,882	96	97
Market	53,619	54,670	53,741	100	98
Market Hogs and Pigs by Weight Groups					
Under 60 Pounds	19,911	20,070	19,862	100	99
60-119 Pounds	13,438	13,655	13,570	101	99
120-179 Pounds	10,854	11,019	10,848	100	98
180 Pounds and Over	9,417	9,926	9,461	100	95
December 1 Inventory					
All Hogs and Pigs	59,804	59,513			
Kept for Breeding	6,209	6,012			
Market	53,594	53,501			
Market Hogs and Pigs by Weight Groups					
Under 60 Pounds	19,908	19,461			
60-119 Pounds	12,924	13,054			
120-179 Pounds	10,744	10,881			
180 Pounds and Over	10,018	10,105			

¹ May not add due to rounding.

**Farrowings: Number of Sows, Pig Crop, and Pigs per Litter,
United States, 2001-2004 ¹**

Item	2001	2002	2003	2004	2003 as % of		2004 as % of 2003
					2001	2002	
	<i>1,000 Head</i>	<i>1,000 Head</i>	<i>1,000 Head</i>	<i>1,000 Head</i>	<i>Percent</i>	<i>Percent</i>	<i>Percent</i>
Sows Farrowing							
Dec-Feb ^{2 3}	2,748	2,836	2,767	2,766	101	98	100
Mar-May	2,870	2,943	2,821		98	96	
Dec-May ²	5,619	5,779	5,589		99	97	
Jun-Aug	2,878	2,887	2,826		98	98	
Sep-Nov ⁴	2,889	2,817	2,801		97	99	
Jun-Nov ⁵	5,767	5,704	5,628		98	99	
Pig Crop							
Dec-Feb ²	23,963	24,794	24,374		102	98	
Mar-May	25,509	25,959	25,053		98	97	
Dec-May ²	49,472	50,752	49,427		100	97	
Jun-Aug	25,539	25,700	25,150		98	98	
Sep-Nov	25,492	24,892					
Jun-Nov	51,031	50,592					
	<i>Number</i>	<i>Number</i>	<i>Number</i>	<i>Number</i>	<i>Percent</i>	<i>Percent</i>	<i>Percent</i>
Pigs per Litter							
Dec-Feb ²	8.72	8.74	8.81		101	101	
Mar-May	8.89	8.82	8.88		100	101	
Dec-May ²	8.81	8.78	8.84		100	101	
Jun-Aug	8.87	8.90	8.90		100	100	
Sep-Nov	8.82	8.83					
Jun-Nov	8.85	8.87					

¹ May not add due to rounding.

² December preceding year.

³ Intentions for 2004.

⁴ Intentions for 2003.

⁵ Actual farrowings for June-August plus intentions for September-November.

Pigs per Litter: By Size of Operation, United States, 2002-2003

Pig Crop	Pigs per Litter on Operations Having					
	1-99 Head	100-499 Head	500-999 Head	1,000-1,999 Head	2,000-4,999 Head	5,000+ Head
	<i>Number</i>	<i>Number</i>	<i>Number</i>	<i>Number</i>	<i>Number</i>	<i>Number</i>
2002						
Dec-Feb ¹	7.30	7.80	8.30	8.60	8.70	8.90
Mar-May	7.70	8.10	8.30	8.70	8.70	8.90
Jun-Aug	7.60	7.80	8.40	8.70	8.80	9.00
Sep-Nov	7.50	8.20	8.40	8.60	8.70	9.00
2003						
Dec-Feb ¹	7.60	8.00	8.20	8.70	8.80	8.90
Mar-May	7.60	8.00	8.40	8.70	8.70	9.00
Jun-Aug	7.60	8.00	8.40	8.60	8.70	9.00

¹ December preceding year.

**Monthly Farrowings: Number of Sows, Pigs per Litter, and Pig Crop,
United States, December-November 2002-2003^{1 2}**

Month	Sows Farrowing		Pigs per Litter		Pig Crop	
	2002	2003	2002	2003	2002	2003
	<i>1,000 Head</i>	<i>1,000 Head</i>	<i>Number</i>	<i>Number</i>	<i>1,000 Head</i>	<i>1,000 Head</i>
Dec ¹	923	908	8.66	8.75	7,994	7,943
Jan	946	931	8.73	8.82	8,257	8,211
Feb	967	928	8.83	8.86	8,543	8,220
Mar	978	938	8.80	8.85	8,608	8,301
Apr	983	942	8.85	8.88	8,700	8,365
May	982	941	8.81	8.91	8,651	8,387
Jun	960	935	8.89	8.91	8,537	8,327
Jul	968	946	8.89	8.90	8,609	8,419
Aug	959	945	8.92	8.89	8,554	8,404
Sep	951		8.85		8,416	
Oct	940		8.83		8,300	
Nov	926		8.83		8,176	
Total	11,483		8.83		101,344	

¹ December preceding year.

² Monthly values may not add to quarterly or annual totals due to rounding.

**Monthly Sows and Gilts: Inventory and Number Bred,
United States, December-November 2002-2003^{1 2}**

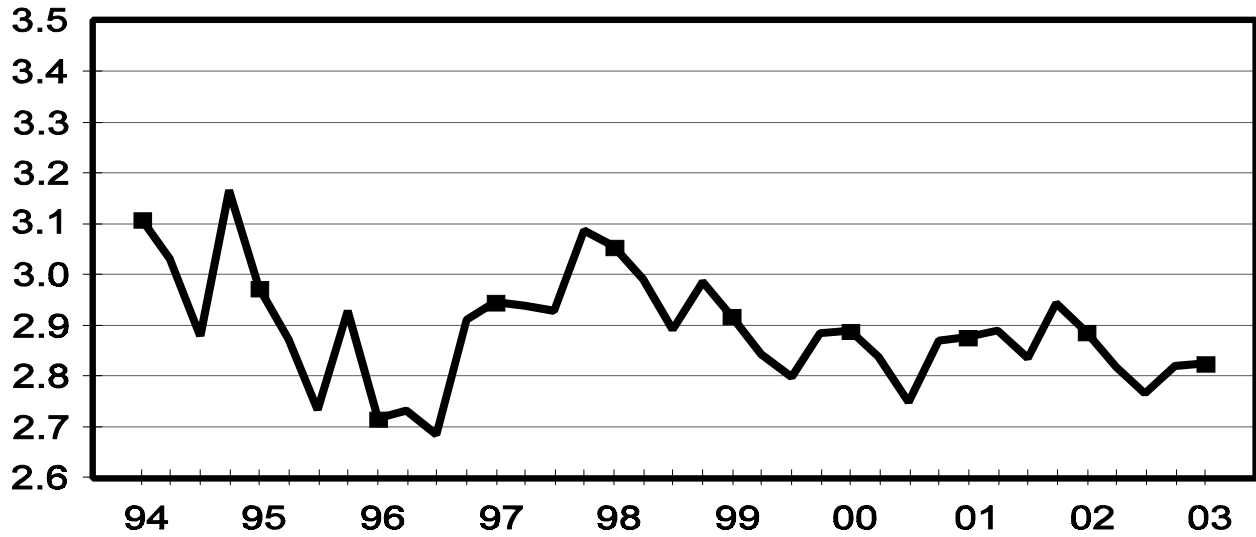
Month	Inventory 1st of Month			Bred during Month		
	2002	2003		2002	2003	
		Number	as % of 2002		Number	as % of 2002
	<i>1,000 Head</i>	<i>1,000 Head</i>	<i>Percent</i>	<i>1,000 Head</i>	<i>1,000 Head</i>	<i>Percent</i>
Dec ¹	6,031	5,850	97	1,194	1,165	98
Jan	6,022	5,835	97	1,190	1,150	97
Feb	6,020	5,810	97	1,156	1,125	97
Mar	6,075	5,830	96	1,181	1,135	96
Apr	5,980	5,765	96	1,173	1,145	98
May	5,985	5,770	96	1,170	1,140	97
Jun	6,030	5,815	96	1,168	1,135	97
Jul	5,975	5,760	96	1,145	1,120	98
Aug	5,940	5,755	97	1,120	1,110	99
Sep	5,890	5,750	98	1,145		
Oct	5,870			1,160		
Nov	5,860			1,170		

¹ December preceding year.

² This is the final publication of this table due to the discontinuation of the Monthly Hog and Pig data collection series.

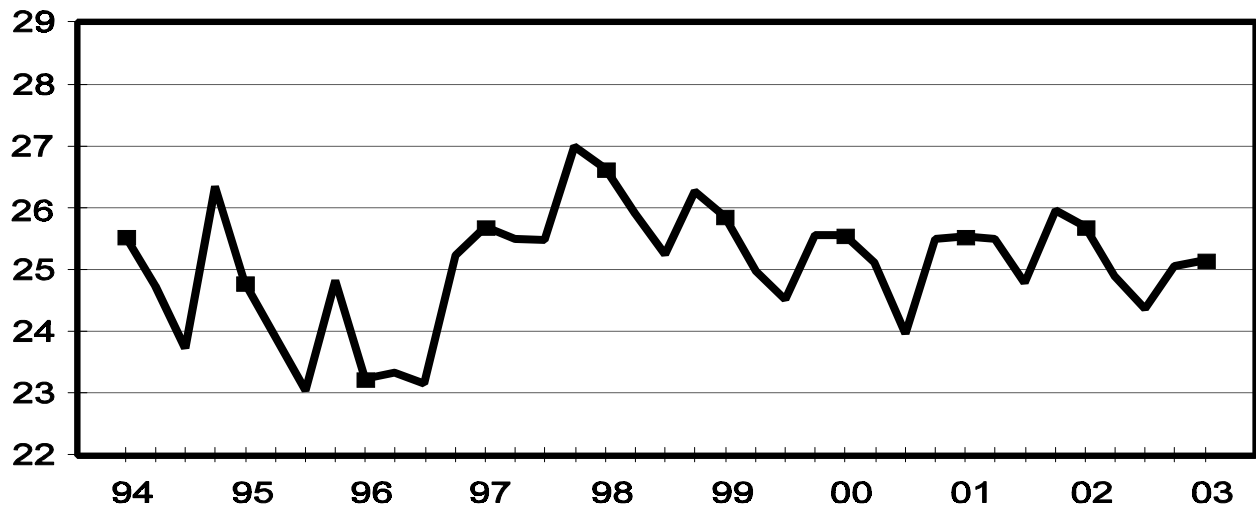
U.S. Quarterly Sows Farrowed June - August

Million Head



U.S. Quarterly Pig Crop June - August

Million Head



**Hogs and Pigs: Breeding, Market, and Total Inventory
by State and United States, March 1, 2002-2003 ¹**

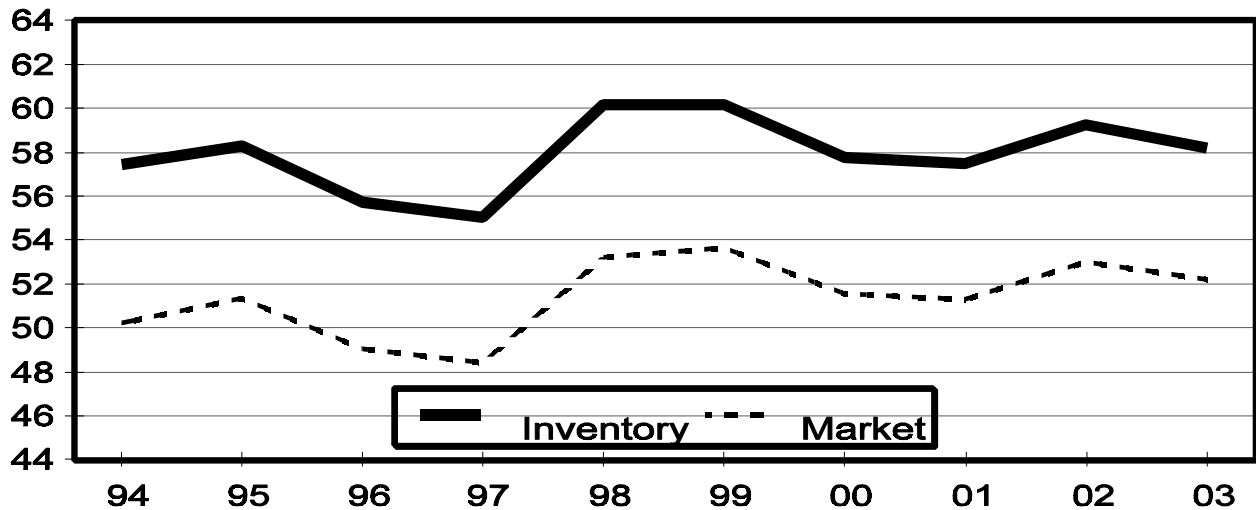
State	Breeding			Market			Total		
	2002	2003		2002	2003		2002	2003	
		Number	as % of 2002		Number	as % of 2002		Number	as % of 2002
	<i>1,000 Head</i>	<i>1,000 Head</i>	<i>Percent</i>	<i>1,000 Head</i>	<i>1,000 Head</i>	<i>Percent</i>	<i>1,000 Head</i>	<i>1,000 Head</i>	<i>Percent</i>
AR	105	75	71	485	200	41	590	275	47
CO	180	120	67	610	590	97	790	710	90
IL	450	420	93	3,750	3,530	94	4,200	3,950	94
IN	340	320	94	2,860	2,780	97	3,200	3,100	97
IA	1,120	1,040	93	13,980	13,960	100	15,100	15,000	99
KS	170	160	94	1,430	1,310	92	1,600	1,470	92
MI	120	100	83	840	770	92	960	870	91
MN	570	590	104	5,230	5,510	105	5,800	6,100	105
MO	370	360	97	2,580	2,590	100	2,950	2,950	100
NE	390	375	96	2,610	2,525	97	3,000	2,900	97
NC	1,000	1,000	100	8,800	8,600	98	9,800	9,600	98
OH	165	160	97	1,305	1,280	98	1,470	1,440	98
OK	330	330	100	1,960	2,030	104	2,290	2,360	103
PA	130	120	92	960	950	99	1,090	1,070	98
SD	150	145	97	1,120	1,155	103	1,270	1,300	102
TX	100	100	100	810	790	98	910	890	98
WI	60	60	100	440	440	100	500	500	100
Oth Sts ²	486	481	99	3,241	3,221	99	3,728	3,702	99
US	6,236	5,956	96	53,011	52,231	99	59,248	58,187	98

¹ May not add due to rounding.

² Individual State estimates not available for the 33 other States.

March 1 Hog Inventory & Market Hogs United States

Million Head



**Market Hogs and Pigs: Inventory Number by Weight Group,
State, and United States, March 1, 2002-2003 ¹**

State	Under 60 Lbs.		60-119 Lbs.		120-179 Lbs.		180 Lbs. and Over	
	2002	2003	2002	2003	2002	2003	2002	2003
	<i>1,000 Head</i>	<i>1,000 Head</i>	<i>1,000 Head</i>	<i>1,000 Head</i>	<i>1,000 Head</i>	<i>1,000 Head</i>	<i>1,000 Head</i>	<i>1,000 Head</i>
AR	250	130	65	20	80	20	90	30
CO	330	305	95	85	70	85	115	115
IL	1,330	1,270	940	860	820	780	660	620
IN	1,040	1,040	720	660	580	560	520	520
IA	4,360	4,300	3,800	3,810	3,220	3,150	2,600	2,700
KS	490	430	270	250	290	250	380	380
MI	310	270	215	190	165	165	150	145
MN	2,070	2,120	1,330	1,320	1,060	1,190	770	880
MO	1,120	1,230	630	570	520	480	310	310
NE	1,070	1,000	680	640	500	490	360	395
NC	3,450	3,350	2,000	2,000	1,850	1,800	1,500	1,450
OH	545	525	310	305	290	280	160	170
OK	860	880	310	350	280	290	510	510
PA	345	340	255	245	200	180	160	185
SD	375	380	295	295	265	270	185	210
TX	265	220	175	210	165	160	205	200
WI	165	165	105	100	90	90	80	85
Oth Sts ²	1,112	1,155	780	745	727	704	622	617
US	19,487	19,110	12,975	12,655	11,172	10,944	9,377	9,522

¹ Weight groups may not add to Market due to rounding.

² Individual State estimates not available for the 33 other States.

**Hogs and Pigs: Breeding, Market, and Total Inventory
by State and United States, June 1, 2002-2003 ¹**

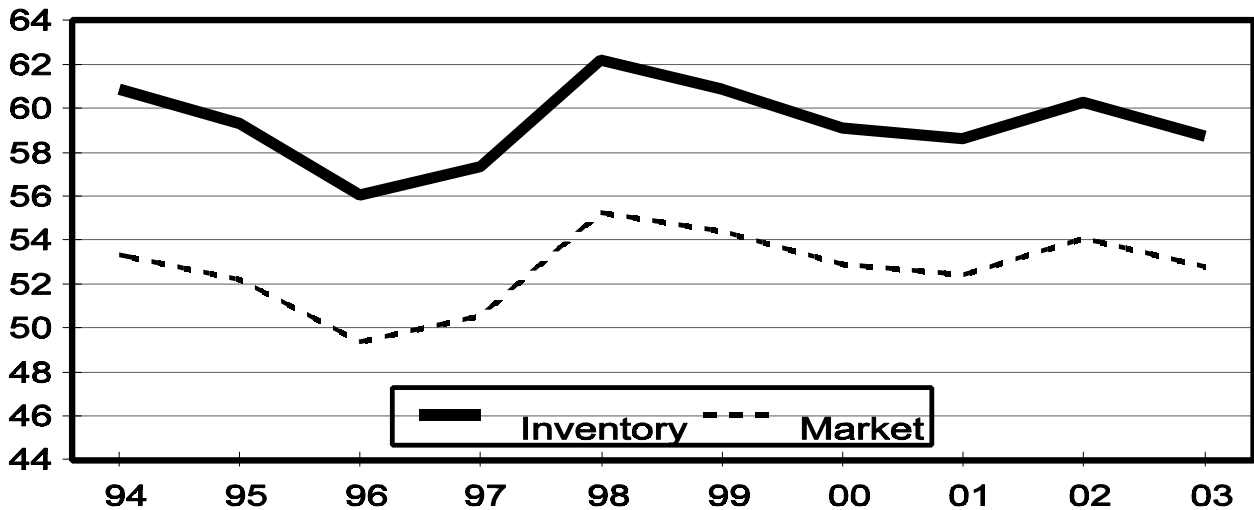
State	Breeding			Market			Total		
	2002	2003		2002	2003		2002	2003	
		Number	as % of 2002		Number	as % of 2002		Number	as % of 2002
	<i>1,000 Head</i>	<i>1,000 Head</i>	<i>Percent</i>	<i>1,000 Head</i>	<i>1,000 Head</i>	<i>Percent</i>	<i>1,000 Head</i>	<i>1,000 Head</i>	<i>Percent</i>
AR	100	75	75	495	185	37	595	260	44
CO	150	120	80	600	600	100	750	720	96
IL	450	420	93	3,800	3,580	94	4,250	4,000	94
IN	330	310	94	2,870	2,690	94	3,200	3,000	94
IA	1,130	1,040	92	14,470	14,460	100	15,600	15,500	99
KS	165	165	100	1,385	1,325	96	1,550	1,490	96
MI	110	100	91	810	800	99	920	900	98
MN	580	590	102	5,320	5,610	105	5,900	6,200	105
MO	380	340	89	2,670	2,560	96	3,050	2,900	95
NE	395	375	95	2,555	2,575	101	2,950	2,950	100
NC	1,000	1,000	100	8,900	8,600	97	9,900	9,600	97
OH	170	155	91	1,330	1,295	97	1,500	1,450	97
OK	320	350	109	2,120	1,940	92	2,440	2,290	94
PA	130	120	92	940	930	99	1,070	1,050	98
SD	140	145	104	1,130	1,175	104	1,270	1,320	104
TX	105	110	105	885	800	90	990	910	92
WI	65	55	85	465	425	91	530	480	91
Oth Sts ²	489	470	96	3,333	3,246	97	3,823	3,716	97
US	6,209	5,940	96	54,078	52,796	98	60,288	58,736	97

¹ May not add due to rounding.

² Individual State estimates not available for the 33 other States.

June 1 Hog Inventory & Market Hogs United States

Million Head



**Market Hogs and Pigs: Inventory Number by Weight Group,
State, and United States, June 1, 2002-2003 ¹**

State	Under 60 Lbs.		60-119 Lbs.		120-179 Lbs.		180 Lbs. and Over	
	2002	2003	2002	2003	2002	2003	2002	2003
	<i>1,000 Head</i>	<i>1,000 Head</i>	<i>1,000 Head</i>	<i>1,000 Head</i>	<i>1,000 Head</i>	<i>1,000 Head</i>	<i>1,000 Head</i>	<i>1,000 Head</i>
AR	255	110	65	25	80	25	95	25
CO	305	310	95	90	90	85	110	115
IL	1,400	1,300	970	900	780	750	650	630
IN	1,040	960	740	650	570	560	520	520
IA	4,570	4,610	4,050	3,960	3,250	3,190	2,600	2,700
KS	510	435	310	295	245	245	320	350
MI	310	290	205	210	155	160	140	140
MN	2,080	2,170	1,380	1,430	1,100	1,180	760	830
MO	1,180	1,240	640	540	510	470	340	310
NE	1,050	1,020	660	690	470	490	375	375
NC	3,600	3,550	2,150	2,100	1,700	1,650	1,450	1,300
OH	530	540	335	315	290	270	175	170
OK	920	850	300	300	290	270	610	520
PA	345	340	245	230	180	180	170	180
SD	405	370	300	305	250	280	175	220
TX	290	265	235	160	160	135	200	240
WI	165	170	120	95	95	85	85	75
Oth Sts ²	1,231	1,087	788	818	669	702	645	639
US	20,186	19,617	13,588	13,113	10,884	10,727	9,420	9,339

¹ Weight groups may not add to Market due to rounding.

² Individual State estimates not available for the 33 other States.

**Hogs and Pigs: Breeding, Market, and Total Inventory
by State and United States, September 1, 2002-2003¹**

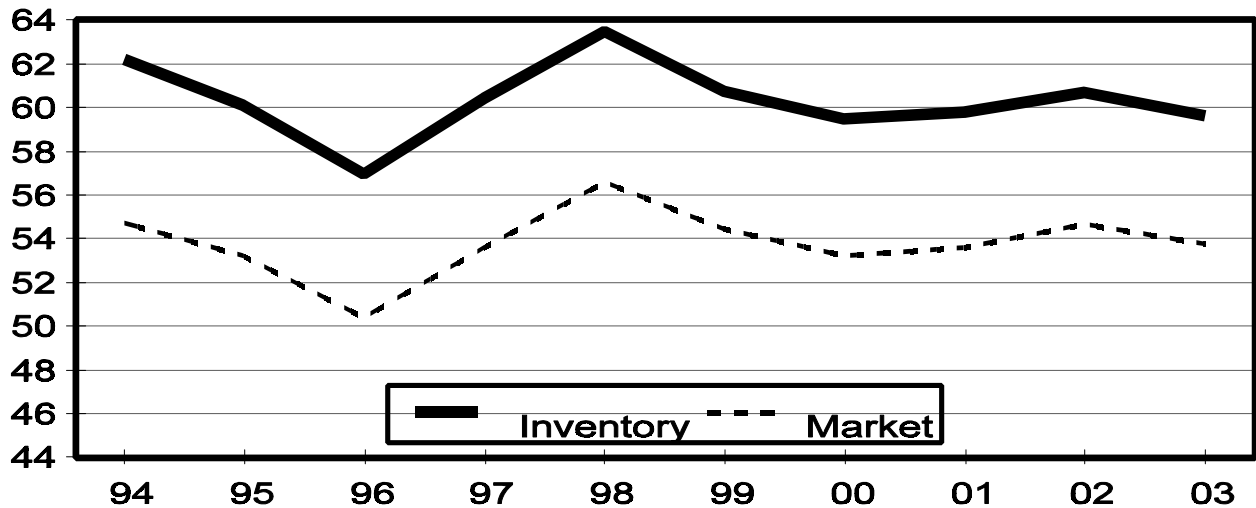
State	Breeding			Market			Total		
	2002	2003		2002	2003		2002	2003	
		Number	as % of 2002		Number	as % of 2002		Number	as % of 2002
	<i>1,000 Head</i>	<i>1,000 Head</i>	<i>Percent</i>	<i>1,000 Head</i>	<i>1,000 Head</i>	<i>Percent</i>	<i>1,000 Head</i>	<i>1,000 Head</i>	<i>Percent</i>
AR	90	80	89	455	200	44	545	280	51
CO	145	110	76	615	630	102	760	740	97
IL	430	420	98	3,820	3,430	90	4,250	3,850	91
IN	330	300	91	2,870	2,700	94	3,200	3,000	94
IA	1,100	1,020	93	14,500	14,680	101	15,600	15,700	101
KS	160	165	103	1,400	1,465	105	1,560	1,630	104
MI	120	100	83	820	790	96	940	890	95
MN	580	590	102	5,520	5,710	103	6,100	6,300	103
MO	350	330	94	2,600	2,570	99	2,950	2,900	98
NE	360	375	104	2,540	2,625	103	2,900	3,000	103
NC	1,000	1,000	100	9,200	8,900	97	10,200	9,900	97
OH	160	155	97	1,330	1,295	97	1,490	1,450	97
OK	330	360	109	2,150	2,070	96	2,480	2,430	98
PA	125	120	96	945	1,010	107	1,070	1,130	106
SD	140	135	96	1,180	1,125	95	1,320	1,260	95
TX	100	95	95	900	825	92	1,000	920	92
WI	55	60	109	425	440	104	480	500	104
Oth Sts ²	479	467	97	3,400	3,276	96	3,880	3,743	96
US	6,054	5,882	97	54,670	53,741	98	60,725	59,623	98

¹ May not add due to rounding.

² Individual State estimates not available for the 33 other States.

September 1 Hog Inventory & Market Hogs United States

Million Head



**Market Hogs and Pigs: Inventory Number by Weight Group,
State, and United States, September 1, 2002-2003 ¹**

State	Under 60 Lbs.		60-119 Lbs.		120-179 Lbs.		180 Lbs. and Over	
	2002	2003	2002	2003	2002	2003	2002	2003
	<i>1,000 Head</i>	<i>1,000 Head</i>	<i>1,000 Head</i>	<i>1,000 Head</i>	<i>1,000 Head</i>	<i>1,000 Head</i>	<i>1,000 Head</i>	<i>1,000 Head</i>
AR	225	110	65	35	75	30	90	25
CO	310	325	95	95	90	90	120	120
IL	1,390	1,270	960	860	790	720	680	580
IN	1,050	1,000	720	680	570	540	530	480
IA	4,490	4,560	4,040	4,100	3,160	3,210	2,810	2,810
KS	485	490	260	340	240	225	415	410
MI	315	290	210	205	160	155	135	140
MN	2,170	2,230	1,410	1,510	1,140	1,180	800	790
MO	1,190	1,220	550	550	470	480	390	320
NE	1,000	1,030	650	690	500	500	390	405
NC	3,600	3,550	2,300	2,250	1,800	1,750	1,500	1,350
OH	540	545	320	330	280	265	190	155
OK	890	950	370	300	340	290	550	530
PA	340	360	250	240	180	200	175	210
SD	400	370	320	305	270	260	190	190
TX	265	290	240	160	195	150	200	225
WI	160	175	100	100	75	85	90	80
Oth Sts ²	1,250	1,097	795	820	684	718	671	641
US	20,070	19,862	13,655	13,570	11,019	10,848	9,926	9,461

¹ Weight groups may not add to Market due to rounding.

² Individual State estimates not available for the 33 other States.

**Hogs and Pigs: Breeding, Market, and Total Inventory
by State and United States, December 1, 2001-2002 ¹**

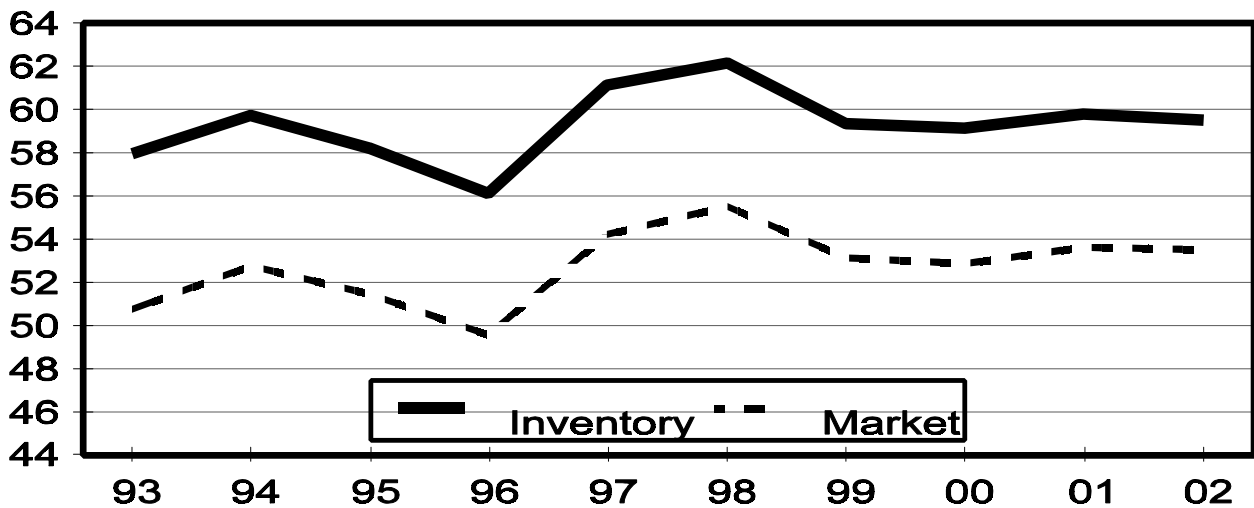
State	Breeding			Market			Total		
	2001	2002		2001	2002		2001	2002	
		Number	as % of 2001		Number	as % of 2001		Number	as % of 2001
	<i>1,000 Head</i>	<i>1,000 Head</i>	<i>Percent</i>	<i>1,000 Head</i>	<i>1,000 Head</i>	<i>Percent</i>	<i>1,000 Head</i>	<i>1,000 Head</i>	<i>Percent</i>
AR	100	80	80	480	225	47	580	305	53
CO	175	160	91	625	630	101	800	790	99
IL	450	430	96	3,800	3,720	98	4,250	4,150	98
IN	340	330	97	2,860	2,870	100	3,200	3,200	100
IA	1,130	1,050	93	14,270	14,550	102	15,400	15,600	101
KS	170	160	94	1,400	1,370	98	1,570	1,530	97
MI	110	100	91	850	760	89	960	860	90
MN	570	580	102	5,230	5,420	104	5,800	6,000	103
MO	380	360	95	2,620	2,590	99	3,000	2,950	98
NE	370	365	99	2,530	2,585	102	2,900	2,950	102
NC	1,000	1,000	100	8,800	8,700	99	9,800	9,700	99
OH	160	155	97	1,270	1,285	101	1,430	1,440	101
OK	340	330	97	2,140	2,010	94	2,480	2,340	94
PA	130	125	96	930	955	103	1,060	1,080	102
SD	145	140	97	1,145	1,170	102	1,290	1,310	102
TX	100	105	105	800	825	103	900	930	103
WI	65	60	92	475	460	97	540	520	96
Oth Sts ²	474	482	102	3,369	3,376	100	3,844	3,858	100
US	6,209	6,012	97	53,594	53,501	100	59,804	59,513	100

¹ May not add due to rounding.

² Individual State estimates not available for the 33 other States.

December 1 Hog Inventory & Market Hogs United States

Million Head



**Market Hogs and Pigs: Inventory Number by Weight Group,
State, and United States, December 1, 2001-2002 ¹**

State	Under 60 Lbs.		60-119 Lbs.		120-179 Lbs.		180 Lbs. and Over	
	2001	2002	2001	2002	2001	2002	2001	2002
	<i>1,000 Head</i>	<i>1,000 Head</i>	<i>1,000 Head</i>	<i>1,000 Head</i>	<i>1,000 Head</i>	<i>1,000 Head</i>	<i>1,000 Head</i>	<i>1,000 Head</i>
AR	230	115	75	40	75	35	100	35
CO	350	350	90	90	75	80	110	110
IL	1,380	1,320	920	920	830	800	670	680
IN	1,040	1,010	710	690	580	620	530	550
IA	4,510	4,400	3,900	3,950	3,060	3,250	2,800	2,950
KS	480	440	290	320	250	290	380	320
MI	315	285	205	180	170	145	160	150
MN	2,130	2,110	1,250	1,330	1,030	1,080	820	900
MO	1,140	1,190	600	530	510	480	370	390
NE	1,030	1,010	610	670	500	500	390	405
NC	3,500	3,450	2,020	2,050	1,730	1,700	1,550	1,500
OH	520	525	310	310	265	275	175	175
OK	860	910	350	280	300	200	630	620
PA	365	340	235	250	180	185	150	180
SD	410	370	290	310	250	265	195	225
TX	260	240	140	240	165	180	235	165
WI	180	165	105	110	100	95	90	90
Oth Sts ²	1,208	1,231	824	784	674	701	663	660
US	19,908	19,461	12,924	13,054	10,744	10,881	10,018	10,105

¹ Weight groups may not add to Market due to rounding.

² Individual State estimates not available for the 33 other States.

**Farrowings: Number of Sows, Pigs per Litter, and Pig Crop
by State and United States, December-February 2002-2004^{1 2}**

State	Sows Farrowing				Pigs Per Litter		Pig Crop ³		
	2002	2003	2004 ⁴		2002	2003	2002	2003	
			Number	as % of 2003				Number	as % of 2002
	<i>1,000 Head</i>	<i>1,000 Head</i>	<i>1,000 Head</i>	<i>Percent</i>	<i>Number</i>	<i>Number</i>	<i>1,000 Head</i>	<i>1,000 Head</i>	<i>Percent</i>
AR	52	41	30	73	9.20	9.70	478	398	83
CO	79	75	61	81	8.40	8.35	664	626	94
IL	210	200	210	105	8.55	8.85	1,796	1,770	99
IN	155	150	145	97	8.70	8.85	1,349	1,328	98
IA	420	410	425	104	8.60	8.50	3,612	3,485	96
KS	79	76	82	108	8.40	8.50	664	646	97
MI	50	43	43	100	9.00	8.80	450	378	84
MN	260	265	270	102	8.80	8.80	2,288	2,332	102
MO	170	170	155	91	8.85	8.85	1,505	1,505	100
NE	170	175	175	100	8.80	8.75	1,496	1,531	102
NC	540	530	540	102	8.95	9.00	4,833	4,770	99
OH	74	73	75	103	8.95	8.90	662	650	98
OK	170	170	160	94	8.75	8.80	1,488	1,496	101
PA	53	49	52	106	8.80	9.30	466	456	98
SD	70	64	64	100	8.90	9.05	623	579	93
TX	43	43	51	119	9.00	8.75	387	376	97
WI	28	29	27	93	8.45	8.60	237	249	105
Oth Sts ⁵	213	204	201	98	8.43	8.80	1,796	1,799	100
US	2,836	2,767	2,766	100	8.74	8.81	24,794	24,374	98

¹ December preceding year.

² May not add due to rounding.

³ Number of pigs born December-February that were still on hand March 1, or had been sold.

⁴ Intentions.

⁵ Individual State estimates not available for the 33 other States.

**Farrowings: Number of Sows, Pigs per Litter, and Pig Crop
by State and United States, March-May 2002-2003 ¹**

State	Sows Farrowing			Pigs per Litter		Pig Crop ²		
	2002	2003		2002	2003	2002	2003	
		Number	as % of 2002				Number	as % of 2002
	<i>1,000 Head</i>	<i>1,000 Head</i>	<i>Percent</i>	<i>Number</i>	<i>Number</i>	<i>1,000 Head</i>	<i>1,000 Head</i>	<i>Percent</i>
AR	52	35	67	9.60	9.70	499	340	68
CO	76	65	86	8.50	8.50	646	553	86
IL	225	205	91	8.60	8.90	1,935	1,825	94
IN	155	140	90	8.80	8.95	1,364	1,253	92
IA	470	460	98	8.55	8.70	4,019	4,002	100
KS	82	81	99	8.75	8.50	718	689	96
MI	50	44	88	8.85	9.00	443	396	89
MN	270	270	100	8.95	8.95	2,417	2,417	100
MO	180	170	94	8.95	8.70	1,611	1,479	92
NE	175	175	100	9.00	8.90	1,575	1,558	99
NC	550	540	98	9.00	9.00	4,950	4,860	98
OH	75	71	95	8.95	9.00	671	639	95
OK	165	170	103	8.85	8.90	1,460	1,513	104
PA	54	49	91	8.70	9.30	470	456	97
SD	70	66	94	8.80	9.10	616	601	98
TX	45	47	104	8.90	9.00	401	423	105
WI	29	27	93	8.55	8.75	248	236	95
Oth Sts ³	220	206	94	8.69	8.78	1,916	1,813	95
US	2,943	2,821	96	8.82	8.88	25,959	25,053	97

¹ May not add due to rounding.

² Number of pigs born March-May that were still on hand June 1, or had been sold.

³ Individual State estimates not available for the 33 other States.

**Farrowings: Number of Sows, Pigs per Litter, and Pig Crop
by State and United States, June-August 2002-2003 ¹**

State	Sows Farrowing			Pigs per Litter		Pig Crop ²		
	2002	2003		2002	2003	2002	2003	
		Number	as % of 2002				Number	as % of 2002
	<i>1,000 Head</i>	<i>1,000 Head</i>	<i>Percent</i>	<i>Number</i>	<i>Number</i>	<i>1,000 Head</i>	<i>1,000 Head</i>	<i>Percent</i>
AR	52	35	67	9.55	9.60	497	336	68
CO	75	67	89	8.35	8.70	626	583	93
IL	210	205	98	8.75	8.85	1,838	1,814	99
IN	155	150	97	8.70	8.95	1,349	1,343	100
IA	430	430	100	8.80	8.70	3,784	3,741	99
KS	82	77	94	8.75	8.75	718	674	94
MI	55	45	82	9.05	9.00	498	405	81
MN	265	270	102	8.85	8.90	2,345	2,403	102
MO	175	170	97	8.90	8.95	1,558	1,522	98
NE	165	175	106	9.00	8.80	1,485	1,540	104
NC	560	550	98	9.10	9.00	5,096	4,950	97
OH	78	75	96	8.90	8.90	694	668	96
OK	170	180	106	9.05	9.00	1,539	1,620	105
PA	53	51	96	9.00	9.40	477	479	100
SD	69	64	93	9.05	9.25	624	592	95
TX	50	48	96	8.95	8.70	448	418	93
WI	26	29	112	8.35	8.60	217	249	115
Oth Sts ³	217	205	95	8.80	8.82	1,907	1,813	95
US	2,887	2,826	98	8.90	8.90	25,700	25,150	98

¹ May not add due to rounding.

² Number of pigs born June-August that were still on hand September 1, or had been sold.

³ Individual State estimates not available for the 33 other States.

**Farrowings: Number of Sows, Pigs per Litter, and Pig Crop
by State and United States, September-November 2001-2003 ¹**

State	Sows Farrowing				Pigs per Litter		Pig Crop ²		
	2001	2002	2003 ³		2001	2002	2001	2002	
			Number	as % of 2002				Number	as % of 2001
	<i>1,000 Head</i>	<i>1,000 Head</i>	<i>1,000 Head</i>	<i>Percent</i>	<i>Number</i>	<i>Number</i>	<i>1,000 Head</i>	<i>1,000 Head</i>	<i>Percent</i>
AR	51	44	33	75	9.50	9.80	485	431	89
CO	82	75	64	85	8.50	8.60	697	645	93
IL	220	210	210	100	8.60	8.65	1,892	1,817	96
IN	155	150	140	93	8.70	8.75	1,349	1,313	97
IA	460	430	430	100	8.70	8.50	4,002	3,655	91
KS	81	79	84	106	8.55	8.70	693	687	99
MI	46	42	45	107	9.15	9.10	421	382	91
MN	265	270	270	100	9.00	8.90	2,385	2,403	101
MO	180	175	165	94	8.80	8.80	1,584	1,540	97
NE	165	170	175	103	8.70	9.05	1,436	1,539	107
NC	530	530	550	104	9.00	9.00	4,770	4,770	100
OH	74	73	72	99	8.80	8.85	651	646	99
OK	170	165	170	103	9.10	9.10	1,547	1,502	97
PA	55	53	52	98	8.80	9.00	484	477	99
SD	71	61	68	111	8.95	9.00	635	549	86
TX	41	46	50	109	8.90	8.85	365	407	112
WI	30	28	27	96	8.45	8.70	254	244	96
Oth Sts ⁴	213	216	196	91	8.66	8.71	1,842	1,885	102
US	2,889	2,817	2,801	99	8.82	8.83	25,492	24,892	98

¹ May not add due to rounding.

² Number of pigs born September-November that were still on hand December 1, or had been sold.

³ Intentions.

⁴ Individual State estimates not available for the 33 other States.

Reliability of June 1 Hogs and Pigs Estimates

Survey Procedures: A random sample of roughly 12,200 U.S. producers was surveyed to provide data for these estimates. Survey procedures ensured that all hog and pig producers, regardless of size, had a chance to be included in the survey. Large producers were sampled more heavily than small operations. Data were collected from about 9,900 operations, 82 percent of the total sample, during the first-half of September by mail, telephone, and face-to-face personal interviews. Regardless of when operations responded, they were asked to report inventories as of September 1.

Estimation Procedures: These hogs and pigs estimates were prepared by the Agricultural Statistics Board after reviewing recommendations and analysis submitted by each State office. National and State survey data were reviewed for reasonableness with each other and with estimates from past years using a balance sheet. The balance sheet begins with the previous inventory estimate, adds the estimates of births and imports, and subtracts the estimates of slaughter, exports, and deaths. This indicated ending inventory level is compared to the Agricultural Statistics Board estimate for reasonableness.

Revision Policy: Revisions to previous estimates are made to improve quarter to quarter relationships. Estimates for the previous four quarters are subject to revision when current estimates are made. In December, estimates for all quarters of the current and previous year are reviewed. The reviews are primarily based on hog check-off receipts and slaughter. Estimates will also be reviewed after data from the Department of Agriculture five-year Census of Agriculture are available. No revisions will be made after that date.

Reliability: Since all operations raising hogs are not included in the sample, survey estimates are subject to sampling variability. Survey results are also subject to non-sampling errors such as omissions, duplication, and mistakes in reporting, recording, and processing the data. The affects of these errors cannot be measured directly. They are minimized through rigid quality controls in the data collection process and through a careful review of all reported data for consistency and reasonableness.

To assist users in evaluating the reliability of the estimates in this report, the "Root Mean Square Error" is shown for selected items in the following table. The "**Root Mean Square Error**" is a statistical measure based on past performance and is computed using the difference between first and final estimates. The "Root Mean Square Error" for hog inventory estimates over the past 20 quarters is 1.0 percent. This means that chances are 2 out of 3 that the final estimate will not be above or below the current estimate of 59.6 million head by more than 1.0 percent. Chances are 9 out of 10 that the difference will not exceed 1.7 percent.

Reliability of September 1 Hog Estimates ¹

Item	Root Mean Square Error	90% Confidence Level		Difference Between First and Latest Estimates			Quarters	
				Average	Smallest	Largest	First Above Latest	First Below Latest
				<i>1,000 Head</i>	<i>1,000 Head</i>	<i>1,000 Head</i>	<i>Number</i>	<i>Number</i>
All Hogs & Pigs	1.0	1.7	1,014	476	0	1,230	8	12
Pig Crop	1.4	2.3	578	226	0	933	13	7
Expected Farrowings								
Next Quarter	1.8	3.1	87	33	1	158	13	7
Following Quarter	2.2	3.7	102	49	1	146	14	6

¹ Based on quarterly records for the past 20 quarters.

Index

Page

Farrowings: Number of Sows, Pig Crop, and Pigs per Litter, United States	5
Farrowings: Number of Sows, Pigs per Litter, and Pig Crop, by State and United States, December-February	16
Farrowings: Number of Sows, Pigs per Litter, and Pig Crop, by State and United States, June-August	18
Farrowings: Number of Sows, Pigs per Litter, and Pig Crop, by State and United States, March-May	17
Farrowings: Number of Sows, Pigs per Litter, and Pig Crop, by State and United States, September-November	19
Hogs and Pigs: Breeding, Market, and Total Inventory by State and United States, December 1	14
Hogs and Pigs: Breeding, Market, and Total Inventory by State and United States, June 1	10
Hogs and Pigs: Breeding, Market, and Total Inventory by State and United States, March 1	8
Hogs and Pigs: Breeding, Market, and Total Inventory by State and United States, September 1	12
Hogs and Pigs: Inventory Number by Class, Weight Group, and Quarter, United States	4
Market Hogs and Pigs: Inventory Number by Weight Group, State, and United States, December 1	15
Market Hogs and Pigs: Inventory Number by Weight Group, State, and United States, June 1	11
Market Hogs and Pigs: Inventory Number by Weight Group, State, and United States, March 1	9
Market Hogs and Pigs: Inventory Number by Weight Group, State, and United States, September 1	13
Monthly Farrowings: Number of Sows, Pigs per Litter, and Pig Crop, United States, December-November	6
Monthly Sows and Gilts: Inventory and Number Bred, United States, December-November	6
Pigs per Litter: By Size of Operation, United States	5
Reliability of Hogs and Pigs Estimates	20

The next "*Quarterly Hogs and Pigs*" report will be released at 3 p.m. ET on December 30, 2003.

The United States Department of Agriculture (USDA) prohibits discrimination in all its programs on the basis of race, color, national origin, gender, religion, age, disability, political beliefs, sexual orientation, and marital or family status. (Not all prohibited bases apply to all programs.) Persons with disabilities who require alternative means for communication of program information (braille, large print, audiotape, etc.) should contact the USDA's TARGET Center at 202-720-2600 (voice and TDD).

To file a complaint of discrimination, write USDA, Director, Office of Civil Rights, Room 326-W, Whitten Building, 1400 Independence Avenue, SW, Washington, D.C., 20250-9410, or call 202-720-5964 (voice or TDD). USDA is an equal opportunity provider and employer.

ACCESS TO REPORTS!!

For your convenience, there are several ways to obtain NASS reports, data products, and services:

INTERNET ACCESS

All NASS reports are available free of charge on the worldwide Internet. For access, connect to the Internet and go to the NASS Home Page at: <http://www.usda.gov/nass/>. Select "Today's Reports" or Publications and then Reports Calendar or Publications and then Search, by Title or Subject.

E-MAIL SUBSCRIPTION

All NASS reports are available by subscription free of charge direct to your e-mail address. Starting with the NASS Home Page at <http://www.usda.gov/nass/>, click on **Publications**, then click on the **Subscribe by E-mail** button which takes you to the page describing e-mail delivery of reports. Finally, click on **Go to the Subscription Page** and follow the instructions.

PRINTED REPORTS OR DATA PRODUCTS

CALL OUR TOLL-FREE ORDER DESK: 800-999-6779 (U.S. and Canada)
Other areas, please call 703-605-6220 FAX: 703-605-6900
(Visa, MasterCard, check, or money order acceptable for payment.)

ASSISTANCE

For **assistance** with general agricultural statistics or further information about NASS or its products or services, contact the **Agricultural Statistics Hotline** at **800-727-9540**, 7:30 a.m. to 4:00 p.m. ET, or e-mail: nass@nass.usda.gov.
