

Released December 30, 2003, by the National Agricultural Statistics Service (NASS), Agricultural Statistics Board, U.S. Department of Agriculture. For information on "Quarterly Hogs and Pigs" call Dan Lofthus at 202-720-3106, office hours 7:30 a.m. to 4:00 p.m. ET.

U.S. Hog Inventory Up 1 Percent

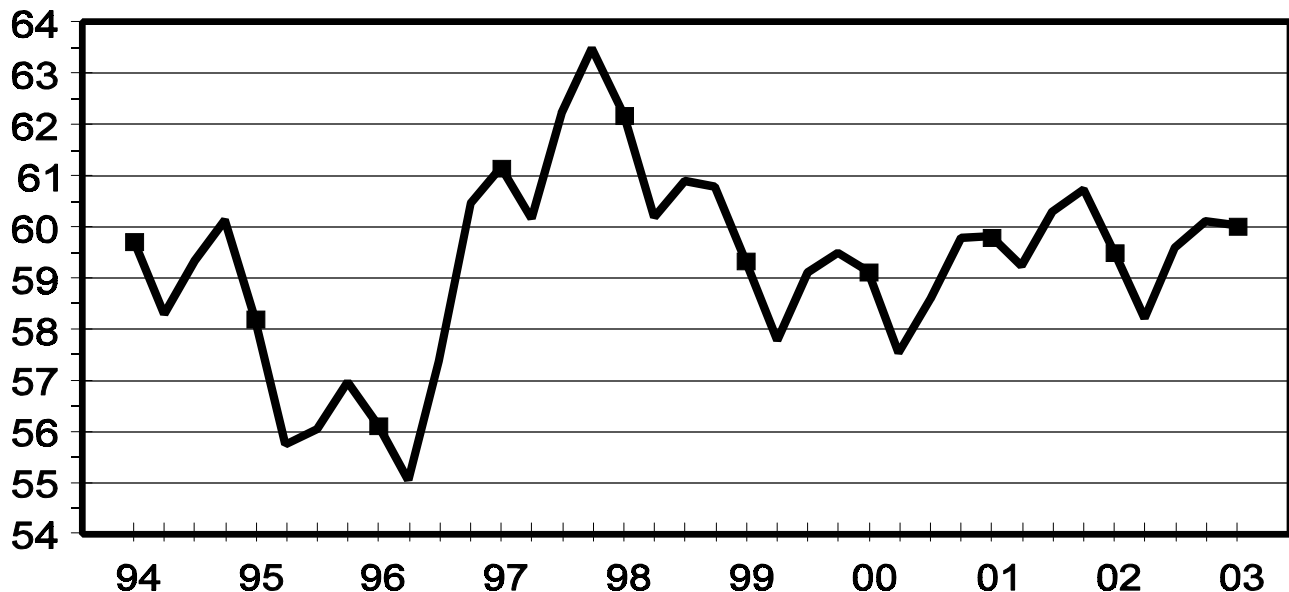
U.S. inventory of all hogs and pigs on December 1, 2003, was 60.0 million head. This was 1 percent above December 1, 2002, but slightly below September 1, 2003.

Breeding inventory, at 5.97 million head, was down 1 percent from December 1, 2002, but 1 percent above last quarter. **Market hog inventory**, at 54.1 million head, was 1 percent above last year, but slightly below last quarter.

The September - November 2003 U.S. pig crop, at 25.3 million head, was 2 percent more than 2002, but 1 percent below 2001. Sows farrowing during this period totaled 2.84 million head, 1 percent above last year. The sows farrowed during this quarter represented 48 percent of the breeding herd. The average pigs saved per litter was 8.93 for the September - November period, compared to 8.83 last year. Pigs saved per litter by size of operation ranged from 7.40 for operations with 1-99 hogs to 9.10 for operations with more than 5,000 hogs and pigs.

U.S. Quarterly Hogs and Pigs Inventory December 1

Million Head



U.S. hog producers intend to have 2.81 million sows farrow during the December 2003 - February 2004 quarter, 1 percent above the actual farrowings during the same period in 2003, but 1 percent below 2002. Intended farrowings for March - May 2004, at 2.85 million sows, are 1 percent below the same period in 2003 and 3 percent below 2002.

Revisions

All inventory and pig crop estimates for March 2002 through September 2003 were reviewed using final pig crop official slaughter, death loss, and updated import and export data. Based on the findings of this review, adjustments of less than one-half percent were made to the March 2003 total inventory, and one percent to the June 2003 and September 2003 total inventories. An adjustment of less than one-half percent was made to the December 2002 - February 2003 pig crop and a two percent adjustment was made to the March - May 2003 pig crop.

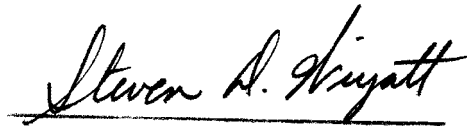
Special Note

The operations-related estimates that are traditionally included were not included in this December 2003 *Quarterly Hogs and Pigs* report to allow a more complete analysis of the estimates in consideration of the 2002 Census of Agriculture data. These operation estimates will be combined with cattle, sheep, and dairy operations into a single *Livestock Operations* report that will be published in Spring 2004. Beginning December 2004, all annual livestock operation estimates, farm numbers, and land in farms will be combined into a new single report released annually. These operation-related estimates will no longer be published in the individual commodity reports.

This report was approved on December 30, 2003.



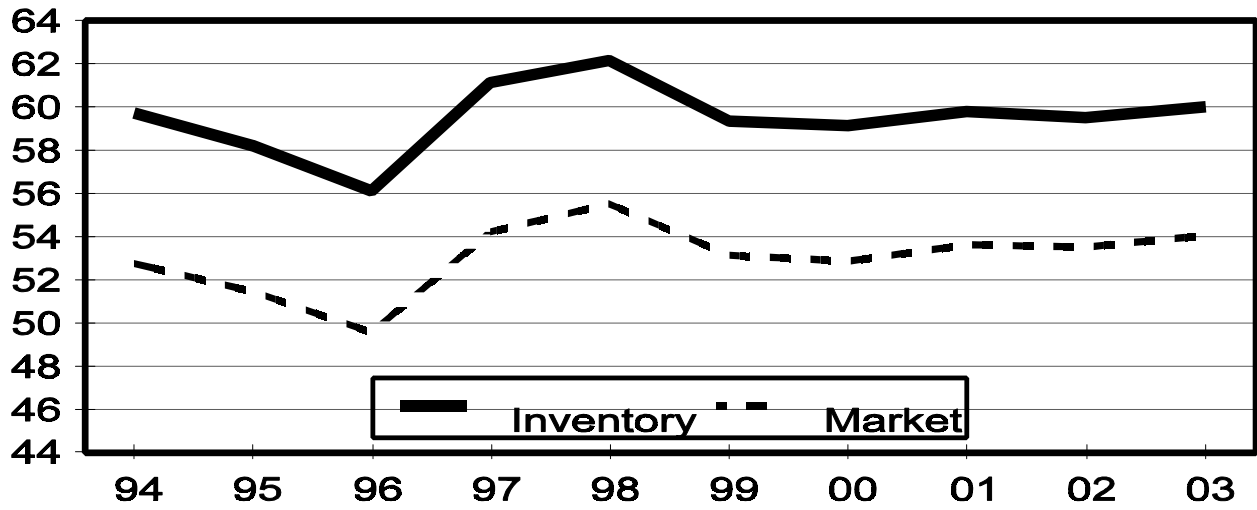
Acting Secretary of
Agriculture
J. B. Penn



Agricultural Statistics Board
Acting Chairperson
Steven D. Wiyatt

December 1 Hog Inventory & Market Hogs United States

Million Head



**Hogs and Pigs: Inventory Number by Class, Weight Group,
and Quarter, United States, 2001-2003¹**

Item	2001	2002	2003	2003 as % of	
				2001	2002
	<i>1,000 Head</i>	<i>1,000 Head</i>	<i>1,000 Head</i>	<i>Percent</i>	<i>Percent</i>
March 1 Inventory					
All Hogs and Pigs	57,524	59,248	58,207	101	98
Kept for Breeding	6,232	6,236	6,021	97	97
Market	51,292	53,011	52,186	102	98
Market Hogs and Pigs by Weight Groups					
Under 60 Pounds	18,737	19,487	19,090	102	98
60-119 Pounds	12,417	12,975	12,655	102	98
120-179 Pounds	10,805	11,172	10,919	101	98
180 Pounds and Over	9,334	9,377	9,522	102	102
June 1 Inventory					
All Hogs and Pigs	58,603	60,288	59,586	102	99
Kept for Breeding	6,186	6,209	5,960	96	96
Market	52,417	54,078	53,626	102	99
Market Hogs and Pigs by Weight Groups					
Under 60 Pounds	19,923	20,186	20,492	103	102
60-119 Pounds	12,992	13,588	12,978	100	96
120-179 Pounds	10,536	10,884	10,787	102	99
180 Pounds and Over	8,967	9,420	9,369	104	99
September 1 Inventory					
All Hogs and Pigs	59,777	60,725	60,103	101	99
Kept for Breeding	6,158	6,054	5,902	96	97
Market	53,619	54,670	54,201	101	99
Market Hogs and Pigs by Weight Groups					
Under 60 Pounds	19,911	20,070	19,862	100	99
60-119 Pounds	13,438	13,655	13,670	102	100
120-179 Pounds	10,854	11,019	11,153	103	101
180 Pounds and Over	9,417	9,926	9,516	101	96
December 1 Inventory					
All Hogs and Pigs	59,804	59,513	60,040	100	101
Kept for Breeding	6,209	6,012	5,966	96	99
Market	53,594	53,501	54,074	101	101
Market Hogs and Pigs by Weight Groups					
Under 60 Pounds	19,908	19,461	19,821	100	102
60-119 Pounds	12,924	13,054	13,250	103	102
120-179 Pounds	10,744	10,881	10,839	101	100
180 Pounds and Over	10,018	10,105	10,164	101	101

¹ May not add due to rounding.

**Farrowings: Number of Sows, Pig Crop, and Pigs per Litter,
United States, 2001-2004¹**

Item	2001	2002	2003	2004	2003 as % of		2004 as Percent of 2003
					2001	2002	
	<i>1,000 Head</i>	<i>1,000 Head</i>	<i>1,000 Head</i>	<i>1,000 Head</i>	<i>Percent</i>	<i>Percent</i>	<i>Percent</i>
Sows Farrowing							
Dec-Feb ^{2 3}	2,748	2,836	2,765	2,806	101	97	101
Mar-May ³	2,870	2,943	2,881	2,846	100	98	99
Dec-May ^{2 3}	5,619	5,779	5,645	5,652	100	98	100
Jun-Aug	2,878	2,887	2,825		98	98	
Sep-Nov	2,889	2,817	2,836		98	101	
Jun-Nov	5,767	5,704	5,660		98	99	
Pig Crop							
Dec-Feb ²	23,963	24,794	24,359		102	98	
Mar-May	25,509	25,959	25,583		100	99	
Dec-May ²	49,472	50,752	49,942		101	98	
Jun-Aug	25,539	25,700	25,150		98	98	
Sep-Nov	25,492	24,892	25,314		99	102	
Jun-Nov	51,031	50,592	50,464		99	100	
	<i>Number</i>	<i>Number</i>	<i>Number</i>	<i>Number</i>	<i>Percent</i>	<i>Percent</i>	<i>Percent</i>
Pigs per Litter							
Dec-Feb ²	8.72	8.74	8.81		101	101	
Mar-May	8.89	8.82	8.88		100	101	
Dec-May ²	8.81	8.78	8.85		100	101	
Jun-Aug	8.87	8.90	8.90		100	100	
Sep-Nov	8.82	8.83	8.93		101	101	
Jun-Nov	8.85	8.87	8.92		101	101	

¹ May not add due to rounding.

² December preceding year.

³ Intentions for 2004.

Pigs per Litter: By Size of Operation, United States, 2002-2003

Pig Crop	Pigs per Litter on Operations Having					
	1-99 Head	100-499 Head	500-999 Head	1,000-1,999 Head	2,000-4,999 Head	5,000+ Head
	<i>Number</i>	<i>Number</i>	<i>Number</i>	<i>Number</i>	<i>Number</i>	<i>Number</i>
2002						
Dec-Feb ¹	7.30	7.80	8.30	8.60	8.70	8.90
Mar-May	7.70	8.10	8.30	8.70	8.70	8.90
Jun-Aug	7.60	7.80	8.40	8.70	8.80	9.00
Sep-Nov	7.50	8.20	8.40	8.60	8.70	9.00
2003						
Dec-Feb ¹	7.60	8.00	8.20	8.70	8.80	8.90
Mar-May	7.60	8.00	8.40	8.70	8.70	9.00
Jun-Aug	7.60	8.00	8.40	8.60	8.70	9.00
Sep-Nov	7.40	7.90	8.30	8.60	8.70	9.10

¹ December preceding year.

**Hogs and Pigs: Breeding, Market, and Total Inventory
by State and United States, December 1, 2002-2003¹**

State	Breeding			Market			Total		
	2002	2003		2002	2003		2002	2003	
		Number	as % of 2002		Number	as % of 2002		Number	as % of 2002
	<i>1,000 Head</i>	<i>1,000 Head</i>	<i>Percent</i>	<i>1,000 Head</i>	<i>1,000 Head</i>	<i>Percent</i>	<i>1,000 Head</i>	<i>1,000 Head</i>	<i>Percent</i>
AL	10	15	150	155	150	97	165	165	100
AK	0.3	0.4	133	0.9	1.1	122	1.2	1.5	125
AZ	14	16	114	129	111	86	143	127	89
AR	80	85	106	225	225	100	305	310	102
CA	21	20	95	114	115	101	135	135	100
CO	160	110	69	630	660	105	790	770	97
CT	0.8	0.8	100	3.0	3.0	100	3.8	3.8	100
DE	4.5	3.0	67	17.5	15.0	86	22.0	18.0	82
FL	7.0	5.0	71	28.0	25.0	89	35.0	30.0	86
GA	55	48	87	290	247	85	345	295	86
HI	5.0	5.0	100	19.0	18.0	95	24.0	23.0	96
ID	3.0	4.0	133	19.0	22.0	116	22.0	26.0	118
IL	430	410	95	3,720	3,540	95	4,150	3,950	95
IN	330	300	91	2,870	2,800	98	3,200	3,100	97
IA	1,050	1,060	101	14,550	14,740	101	15,600	15,800	101
KS	160	160	100	1,370	1,470	107	1,530	1,630	107
KY	40	45	113	330	335	102	370	380	103
LA	3.0	3.0	100	17.0	17.0	100	20.0	20.0	100
ME	1.3	1.5	115	4.7	5.0	106	6.0	6.5	108
MD	7.0	6.0	86	38.0	34.0	89	45.0	40.0	89
MA	2.5	2.5	100	14.0	12.0	86	16.5	14.5	88
MI	100	110	110	760	840	111	860	950	110
MN	580	600	103	5,420	5,800	107	6,000	6,400	107
MS	29	28	97	246	277	113	275	305	111
MO	360	340	94	2,590	2,610	101	2,950	2,950	100
MT	21	18	86	164	152	93	185	170	92
NE	365	370	101	2,585	2,530	98	2,950	2,900	98
NV	1.0	0.6	60	5.5	4.4	80	6.5	5.0	77
NH	0.8	0.8	100	2.4	2.1	88	3.2	2.9	91
NJ	2.0	1.0	50	13.0	11.0	85	15.0	12.0	80
NM	0.4	0.4	100	2.6	2.1	81	3.0	2.5	83
NY	9.0	9.0	100	77.0	64.0	83	86.0	73.0	85
NC	1,000	1,000	100	8,700	8,900	102	9,700	9,900	102
ND	26	30	115	128	120	94	154	150	97
OH	155	160	103	1,285	1,360	106	1,440	1,520	106
OK	330	360	109	2,010	1,980	99	2,340	2,340	100
OR	6.0	6.0	100	25.0	21.0	84	31.0	27.0	87
PA	125	120	96	955	980	103	1,080	1,100	102
RI	0.7	0.6	86	2.2	2.0	91	2.9	2.6	90
SC	30	30	100	270	270	100	300	300	100
SD	140	145	104	1,170	1,115	95	1,310	1,260	96
TN	30	25	83	190	190	100	220	215	98
TX	105	105	100	825	825	100	930	930	100
UT	90	91	101	580	569	98	670	660	99
VT	0.5	0.4	80	2.0	1.7	85	2.5	2.1	84
VA	35	35	100	365	335	92	400	370	93
WA	4.0	4.0	100	20.0	20.0	100	24.0	24.0	100
WV	2.0	2.0	100	9.0	8.0	89	11.0	10.0	91
WI	60	55	92	460	435	95	520	490	94
WY	20	19	95	95	105	111	115	124	108
US	6,012	5,966	99	53,501	54,074	101	59,513	60,040	101

¹ May not add due to rounding.

**Market Hogs and Pigs: Inventory Number by Weight Group,
State, and United States, December 1, 2002-2003¹**

State	Under 60 Lbs.		60-119 Lbs.		120-179 Lbs.		180 Lbs. and Over	
	2002	2003	2002	2003	2002	2003	2002	2003
	<i>1,000 Head</i>	<i>1,000 Head</i>	<i>1,000 Head</i>	<i>1,000 Head</i>	<i>1,000 Head</i>	<i>1,000 Head</i>	<i>1,000 Head</i>	<i>1,000 Head</i>
AL	67	65	31	30	28	27	29	28
AK	0.4	0.5	0.3	0.3	0.1	0.2	0.1	0.1
AZ	44	32	29	27	28	26	28	26
AR	115	125	40	30	35	30	35	40
CA	34	35	29	25	26	28	25	27
CO	350	325	90	105	80	95	110	135
CT	0.9	1.3	0.7	0.6	0.6	0.7	0.8	0.4
DE	6.0	6.5	4.0	3.0	4.0	3.0	3.5	2.5
FL	13.0	13.0	9.0	7.0	4.0	3.0	2.0	2.0
GA	133	114	67	56	50	42	40	35
HI	8.0	8.0	5.0	5.0	4.0	3.0	2.0	2.0
ID	7.0	7.0	5.0	6.0	4.0	5.0	3.0	4.0
IL	1,320	1,280	920	860	800	750	680	650
IN	1,010	990	690	670	620	580	550	560
IA	4,400	4,510	3,950	4,130	3,250	3,100	2,950	3,000
KS	440	510	320	285	290	270	320	405
KY	110	110	80	90	75	70	65	65
LA	6.0	6.0	4.0	5.0	4.0	3.0	3.0	3.0
ME	2.8	2.3	1.0	1.4	0.5	0.8	0.4	0.5
MD	10.0	10.0	7.0	7.0	9.0	9.0	12.0	8.0
MA	4.5	3.8	4.5	3.3	3.0	3.1	2.0	1.8
MI	285	300	180	205	145	175	150	160
MN	2,110	2,210	1,330	1,420	1,080	1,200	900	970
MS	90	34	59	81	50	81	47	81
MO	1,190	1,280	530	530	480	460	390	340
MT	55	50	41	37	35	35	33	30
NE	1,010	980	670	650	500	490	405	410
NV	1.3	0.9	1.3	1.1	1.4	1.0	1.5	1.4
NH	0.9	0.6	0.3	0.7	0.7	0.5	0.5	0.3
NJ	2.0	1.0	2.0	2.0	3.0	3.0	6.0	5.0
NM	1.3	1.0	0.5	0.3	0.3	0.3	0.5	0.5
NY	30.0	24.0	17.0	15.0	15.0	13.0	15.0	12.0
NC	3,450	3,550	2,050	2,150	1,700	1,700	1,500	1,500
ND	50	50	33	30	25	21	20	19
OH	525	560	310	330	275	280	175	190
OK	910	920	280	320	200	290	620	450
OR	9.0	8.0	7.0	6.0	4.0	3.0	5.0	4.0
PA	340	360	250	235	185	185	180	200
RI	0.8	0.6	0.6	0.4	0.4	0.7	0.4	0.3
SC	65	65	70	70	55	60	80	75
SD	370	385	310	250	265	260	225	220
TN	75	77	42	43	37	36	36	34
TX	240	245	240	195	180	200	165	185
UT	230	245	120	123	130	123	100	78
VT	0.7	0.7	0.4	0.3	0.3	0.3	0.6	0.4
VA	125	105	85	80	80	60	75	90
WA	7.0	7.0	6.0	5.0	4.0	4.0	3.0	4.0
WV	3.0	3.0	3.0	1.0	1.0	1.0	2.0	3.0
WI	165	165	110	100	95	85	90	85
WY	38	39	19	23	19	22	19	21
US	19,461	19,821	13,054	13,250	10,881	10,839	10,105	10,164

¹ Weight groups may not add to Market due to rounding.

**Hogs and Pigs: Breeding, Market, and Total Inventory
by State and United States, March 1, 2002-2003¹**

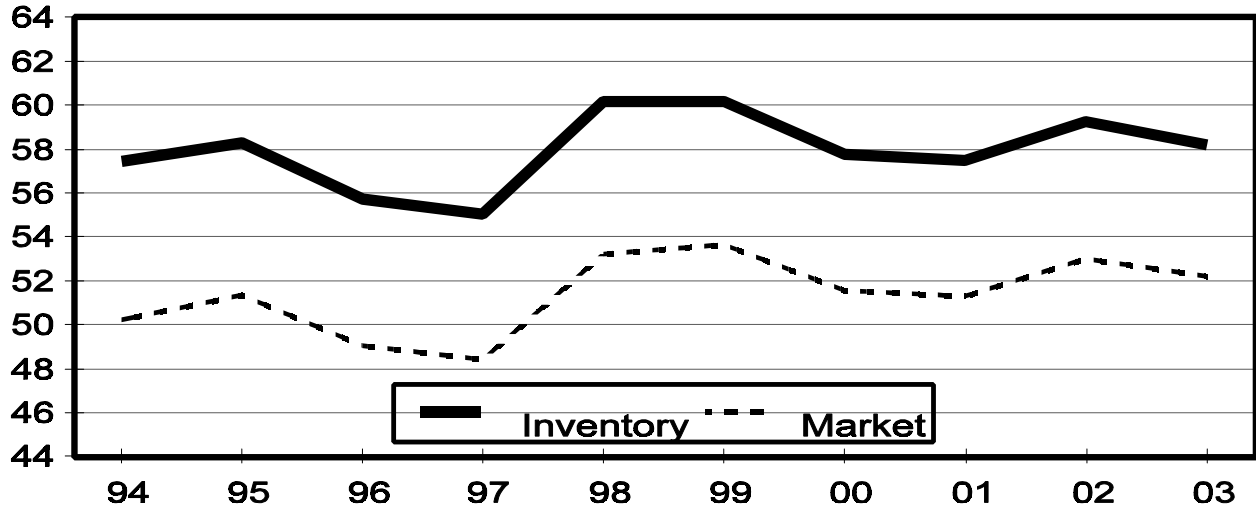
State	Breeding			Market			Total		
	2002	2003		2002	2003		2002	2003	
		Number	as % of 2002		Number	as % of 2002		Number	as % of 2002
	<i>1,000 Head</i>	<i>1,000 Head</i>	<i>Percent</i>	<i>1,000 Head</i>	<i>1,000 Head</i>	<i>Percent</i>	<i>1,000 Head</i>	<i>1,000 Head</i>	<i>Percent</i>
AR	105	75	71	485	200	41	590	275	47
CO	180	130	72	610	590	97	790	720	91
IL	450	420	93	3,750	3,530	94	4,200	3,950	94
IN	340	320	94	2,860	2,780	97	3,200	3,100	97
IA	1,120	1,060	95	13,980	13,940	100	15,100	15,000	99
KS	170	160	94	1,430	1,310	92	1,600	1,470	92
MI	120	100	83	840	770	92	960	870	91
MN	570	600	105	5,230	5,500	105	5,800	6,100	105
MO	370	360	97	2,580	2,590	100	2,950	2,950	100
NE	390	380	97	2,610	2,520	97	3,000	2,900	97
NC	1,000	1,000	100	8,800	8,600	98	9,800	9,600	98
OH	165	160	97	1,305	1,280	98	1,470	1,440	98
OK	330	340	103	1,960	2,030	104	2,290	2,370	103
PA	130	125	96	960	945	98	1,090	1,070	98
SD	150	145	97	1,120	1,155	103	1,270	1,300	102
TX	100	105	105	810	785	97	910	890	98
WI	60	60	100	440	440	100	500	500	100
Oth Sts ²	486	481	99	3,241	3,221	99	3,728	3,702	99
US	6,236	6,021	97	53,011	52,186	98	59,248	58,207	98

¹ May not add due to rounding.

² Individual State estimates not available for the 33 other States.

March 1 Hog Inventory & Market Hogs United States

Million Head



**Market Hogs and Pigs: Inventory Number by Weight Group,
State, and United States, March 1, 2002-2003¹**

State	Under 60 Lbs.		60-119 Lbs.		120-179 Lbs.		180 Lbs. and Over	
	2002	2003	2002	2003	2002	2003	2002	2003
	<i>1,000 Head</i>	<i>1,000 Head</i>	<i>1,000 Head</i>	<i>1,000 Head</i>	<i>1,000 Head</i>	<i>1,000 Head</i>	<i>1,000 Head</i>	<i>1,000 Head</i>
AR	250	130	65	20	80	20	90	30
CO	330	305	95	85	70	85	115	115
IL	1,330	1,270	940	860	820	780	660	620
IN	1,040	1,040	720	660	580	560	520	520
IA	4,360	4,290	3,800	3,810	3,220	3,140	2,600	2,700
KS	490	430	270	250	290	250	380	380
MI	310	270	215	190	165	165	150	145
MN	2,070	2,110	1,330	1,320	1,060	1,190	770	880
MO	1,120	1,230	630	570	520	480	310	310
NE	1,070	1,000	680	640	500	485	360	395
NC	3,450	3,350	2,000	2,000	1,850	1,800	1,500	1,450
OH	545	525	310	305	290	280	160	170
OK	860	880	310	350	280	290	510	510
PA	345	340	255	245	200	175	160	185
SD	375	380	295	295	265	270	185	210
TX	265	220	175	210	165	155	205	200
WI	165	165	105	100	90	90	80	85
Oth Sts ²	1,112	1,155	780	745	727	704	622	617
US	19,487	19,090	12,975	12,655	11,172	10,919	9,377	9,522

¹ Weight groups may not add to Market due to rounding.

² Individual State estimates not available for the 33 other States.

**Hogs and Pigs: Breeding, Market, and Total Inventory
by State and United States, June 1, 2002-2003¹**

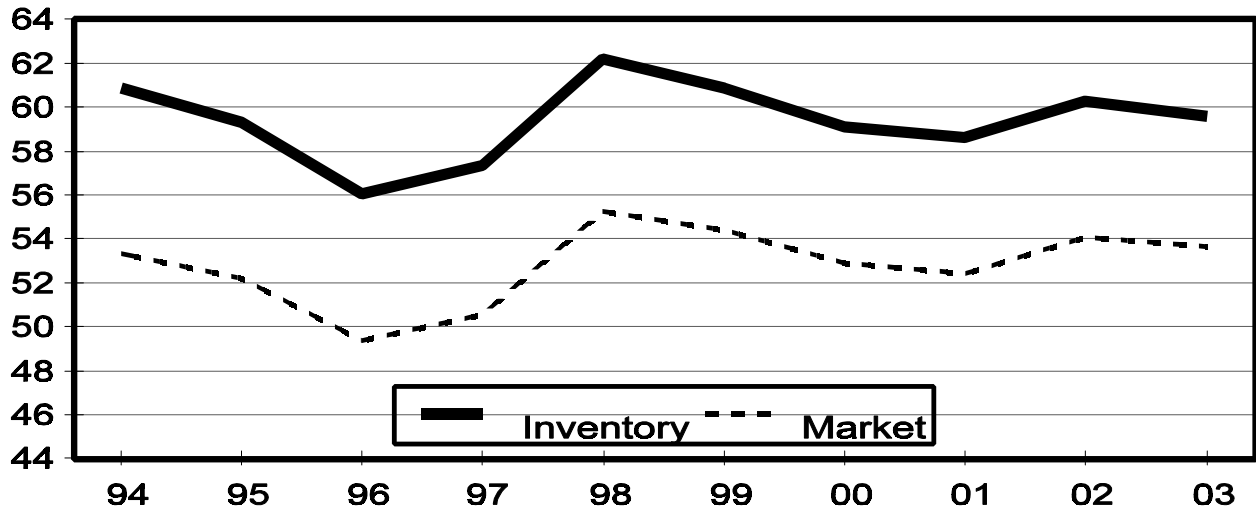
State	Breeding			Market			Total		
	2002	2003		2002	2003		2002	2003	
		Number	as % of 2002		Number	as % of 2002		Number	as % of 2002
	<i>1,000 Head</i>	<i>1,000 Head</i>	<i>Percent</i>	<i>1,000 Head</i>	<i>1,000 Head</i>	<i>Percent</i>	<i>1,000 Head</i>	<i>1,000 Head</i>	<i>Percent</i>
AR	100	75	75	495	195	39	595	270	45
CO	150	120	80	600	610	102	750	730	97
IL	450	420	93	3,800	3,630	96	4,250	4,050	95
IN	330	310	94	2,870	2,740	95	3,200	3,050	95
IA	1,130	1,050	93	14,470	14,750	102	15,600	15,800	101
KS	165	165	100	1,385	1,345	97	1,550	1,510	97
MI	110	100	91	810	830	102	920	930	101
MN	580	600	103	5,320	5,700	107	5,900	6,300	107
MO	380	340	89	2,670	2,560	96	3,050	2,900	95
NE	395	375	95	2,555	2,575	101	2,950	2,950	100
NC	1,000	1,000	100	8,900	8,800	99	9,900	9,800	99
OH	170	155	91	1,330	1,305	98	1,500	1,460	97
OK	320	350	109	2,120	1,940	92	2,440	2,290	94
PA	130	120	92	940	930	99	1,070	1,050	98
SD	140	145	104	1,130	1,185	105	1,270	1,330	105
TX	105	110	105	885	800	90	990	910	92
WI	65	55	85	465	425	91	530	480	91
Oth Sts ²	489	470	96	3,333	3,306	99	3,823	3,776	99
US	6,209	5,960	96	54,078	53,626	99	60,288	59,586	99

¹ May not add due to rounding.

² Individual State estimates not available for the 33 other States.

June 1 Hog Inventory & Market Hogs United States

Million Head



**Market Hogs and Pigs: Inventory Number by Weight Group,
State, and United States, June 1, 2002-2003¹**

State	Under 60 Lbs.		60-119 Lbs.		120-179 Lbs.		180 Lbs. and Over	
	2002	2003	2002	2003	2002	2003	2002	2003
	<i>1,000 Head</i>	<i>1,000 Head</i>	<i>1,000 Head</i>	<i>1,000 Head</i>	<i>1,000 Head</i>	<i>1,000 Head</i>	<i>1,000 Head</i>	<i>1,000 Head</i>
AR	255	120	65	25	80	25	95	25
CO	305	320	95	90	90	85	110	115
IL	1,400	1,330	970	890	780	780	650	630
IN	1,040	990	740	650	570	570	520	530
IA	4,570	4,910	4,050	3,950	3,250	3,190	2,600	2,700
KS	510	445	310	285	245	255	320	360
MI	310	310	205	210	155	165	140	145
MN	2,080	2,300	1,380	1,390	1,100	1,180	760	830
MO	1,180	1,250	640	530	510	470	340	310
NE	1,050	1,030	660	680	470	490	375	375
NC	3,600	3,750	2,150	2,100	1,700	1,650	1,450	1,300
OH	530	540	335	315	290	275	175	175
OK	920	870	300	280	290	270	610	520
PA	345	350	245	220	180	180	170	180
SD	405	380	300	305	250	280	175	220
TX	290	275	235	150	160	135	200	240
WI	165	175	120	90	95	85	85	75
Oth Sts ²	1,231	1,147	788	818	669	702	645	639
US	20,186	20,492	13,588	12,978	10,884	10,787	9,420	9,369

¹ Weight groups may not add to Market due to rounding.

² Individual State estimates not available for the 33 other States.

**Hogs and Pigs: Breeding, Market, and Total Inventory
by State and United States, September 1, 2002-2003¹**

State	Breeding			Market			Total		
	2002	2003		2002	2003		2002	2003	
		Number	as % of 2002		Number	as % of 2002		Number	as % of 2002
	<i>1,000 Head</i>	<i>1,000 Head</i>	<i>Percent</i>	<i>1,000 Head</i>	<i>1,000 Head</i>	<i>Percent</i>	<i>1,000 Head</i>	<i>1,000 Head</i>	<i>Percent</i>
AR	90	80	89	455	200	44	545	280	51
CO	145	110	76	615	630	102	760	740	97
IL	430	420	98	3,820	3,480	91	4,250	3,900	92
IN	330	300	91	2,870	2,700	94	3,200	3,000	94
IA	1,100	1,030	94	14,500	14,770	102	15,600	15,800	101
KS	160	165	103	1,400	1,485	106	1,560	1,650	106
MI	120	100	83	820	800	98	940	900	96
MN	580	600	103	5,520	5,800	105	6,100	6,400	105
MO	350	330	94	2,600	2,570	99	2,950	2,900	98
NE	360	375	104	2,540	2,625	103	2,900	3,000	103
NC	1,000	1,000	100	9,200	9,100	99	10,200	10,100	99
OH	160	155	97	1,330	1,295	97	1,490	1,450	97
OK	330	360	109	2,150	2,070	96	2,480	2,430	98
PA	125	120	96	945	1,010	107	1,070	1,130	106
SD	140	135	96	1,180	1,125	95	1,320	1,260	95
TX	100	95	95	900	825	92	1,000	920	92
WI	55	60	109	425	440	104	480	500	104
Oth Sts ²	479	467	97	3,400	3,276	96	3,880	3,743	96
US	6,054	5,902	97	54,670	54,201	99	60,725	60,103	99

¹ May not add due to rounding.

² Individual State estimates not available for the 33 other States.

September 1 Hog Inventory & Market Hogs United States

Million Head



**Market Hogs and Pigs: Inventory Number by Weight Group,
State, and United States, September 1, 2002-2003¹**

State	Under 60 Lbs.		60-119 Lbs.		120-179 Lbs.		180 Lbs. and Over	
	2002	2003	2002	2003	2002	2003	2002	2003
	<i>1,000 Head</i>	<i>1,000 Head</i>	<i>1,000 Head</i>	<i>1,000 Head</i>	<i>1,000 Head</i>	<i>1,000 Head</i>	<i>1,000 Head</i>	<i>1,000 Head</i>
AR	225	110	65	35	75	30	90	25
CO	310	325	95	95	90	90	120	120
IL	1,390	1,270	960	860	790	770	680	580
IN	1,050	1,000	720	680	570	540	530	480
IA	4,490	4,560	4,040	4,100	3,160	3,300	2,810	2,810
KS	485	490	260	340	240	235	415	420
MI	315	290	210	205	160	160	135	145
MN	2,170	2,230	1,410	1,510	1,140	1,230	800	830
MO	1,190	1,220	550	550	470	480	390	320
NE	1,000	1,030	650	690	500	500	390	405
NC	3,600	3,550	2,300	2,350	1,800	1,850	1,500	1,350
OH	540	545	320	330	280	265	190	155
OK	890	950	370	300	340	290	550	530
PA	340	360	250	240	180	200	175	210
SD	400	370	320	305	270	260	190	190
TX	265	290	240	160	195	150	200	225
WI	160	175	100	100	75	85	90	80
Oth Sts ²	1,250	1,097	795	820	684	718	671	641
US	20,070	19,862	13,655	13,670	11,019	11,153	9,926	9,516

¹ Weight groups may not add to Market due to rounding.

² Individual State estimates not available for the 33 other States.

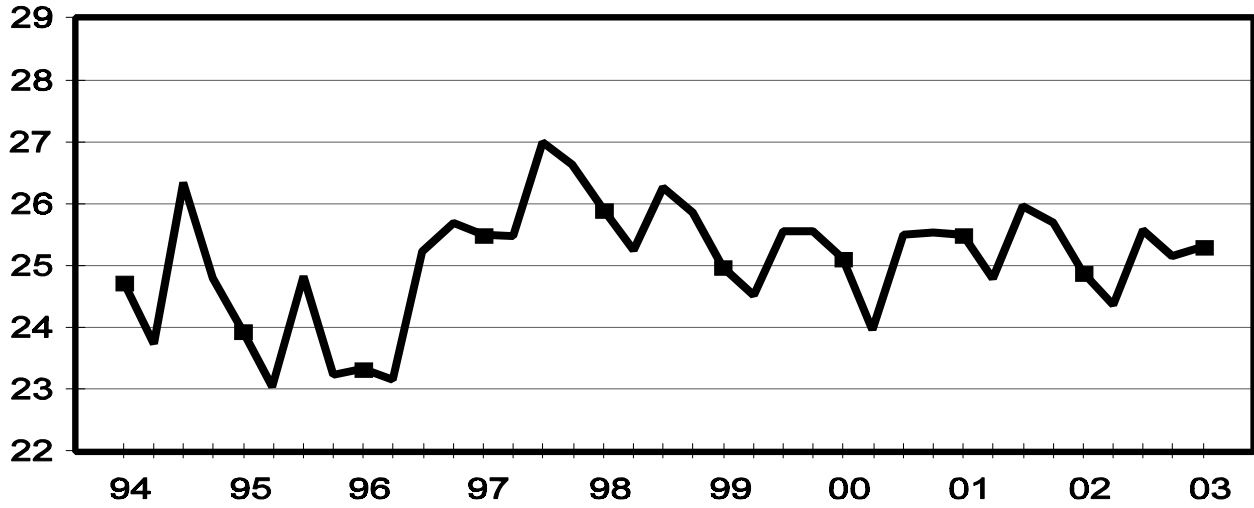
**Annual Farrowings: Number of Sows, Pigs per Litter, and Pig Crop
by State and United States, December-November 2002-2003**^{1 2}

State	Sows Farrowing			Pigs per Litter		Pig Crop		
	2002	2003		2002	2003	2002	2003	
		Number	as % of 2002				Number	as % of 2002
	<i>1,000 Head</i>	<i>1,000 Head</i>	<i>Percent</i>	<i>Number</i>	<i>Number</i>	<i>1,000 Head</i>	<i>1,000 Head</i>	<i>Percent</i>
AL	24.0	25.0	104	9.04	8.80	217.0	220.0	101
AK	0.26	0.32	123	9.15	9.28	2.38	2.97	125
AZ	33.0	30.0	91	7.91	8.33	261.0	250.0	96
AR	200	147	74	9.53	9.63	1,905	1,416	74
CA	34.0	33.0	97	8.68	9.45	295.0	312.0	106
CO	305	269	88	8.46	8.49	2,581	2,283	88
CT	0.80	0.80	100	8.00	8.10	6.40	6.48	101
DE	8.00	6.00	75	7.00	8.67	56.00	52.00	93
FL	14.00	10.00	71	7.00	7.00	98.00	70.00	71
GA	101.0	95.0	94	8.84	8.81	893.0	837.0	94
HI	4.50	4.30	96	7.11	7.21	32.00	31.00	97
ID	5.60	6.00	107	7.50	8.17	42.00	49.00	117
IL	855	825	96	8.64	8.86	7,386	7,312	99
IN	615	590	96	8.74	8.90	5,375	5,252	98
IA	1,750	1,750	100	8.61	8.68	15,070	15,187	101
KS	322	317	98	8.66	8.62	2,787	2,731	98
KY	91.0	74.0	81	8.58	8.58	781.0	635.0	81
LA	4.60	4.60	100	6.96	7.39	32.00	34.00	106
ME	2.00	1.90	95	6.50	7.00	13.00	13.30	102
MD	9.00	8.00	89	7.78	8.00	70.00	64.00	91
MA	2.80	2.70	96	7.39	7.96	20.70	21.48	104
MI	197	185	94	9.00	8.90	1,773	1,646	93
MN	1,065	1,095	103	8.88	8.91	9,453	9,761	103
MS	59.0	60.0	102	8.51	8.60	502.0	516.0	103
MO	700	685	98	8.88	8.90	6,214	6,099	98
MT	38.0	37.0	97	9.16	9.14	348.0	338.0	97
NE	680	705	104	8.96	8.86	6,095	6,248	103
NV	0.80	0.71	89	8.20	7.68	6.56	5.45	83
NH	0.90	0.80	89	8.50	6.50	7.65	5.20	68
NJ	2.10	0.80	38	8.38	7.00	17.60	5.60	32
NM	0.40	0.40	100	7.25	7.50	2.90	3.00	103
NY	14.50	14.00	97	8.62	9.14	125.00	128.00	102
NC	2,180	2,160	99	9.01	9.03	19,649	19,494	99
ND	52.5	47.0	90	8.46	8.94	444.0	420.0	95
OH	300	295	98	8.91	8.90	2,673	2,626	98
OK	670	710	106	8.94	8.85	5,989	6,284	105
OR	6.20	6.40	103	8.71	8.44	54.00	54.00	100
PA	213	200	94	8.87	9.38	1,890	1,876	99
RI	0.70	0.60	86	6.50	7.00	4.55	4.20	92
SC	57.0	53.0	93	8.96	9.00	511.0	477.0	93
SD	270	267	99	8.93	9.14	2,412	2,440	101
TN	53.0	51.0	96	8.32	8.41	441.0	429.0	97
TX	184	173	94	8.93	8.71	1,643	1,506	92
UT	137.0	135.0	99	9.07	9.36	1,242.0	1,263.0	102
VT	0.60	0.50	83	8.50	7.50	5.10	3.75	74
VA	60.0	61.0	102	9.13	9.38	548.0	572.0	104
WA	5.00	4.50	90	8.40	8.44	42.00	38.00	90
WV	2.20	2.50	114	7.95	7.40	17.50	18.50	106
WI	111	112	101	8.52	8.65	946	969	102
WY	42.0	44.0	105	8.69	9.02	365.0	397.0	109
US	11,483	11,306	98	8.83	8.88	101,344	100,406	99

¹ December preceding year.
² May not add due to rounding.

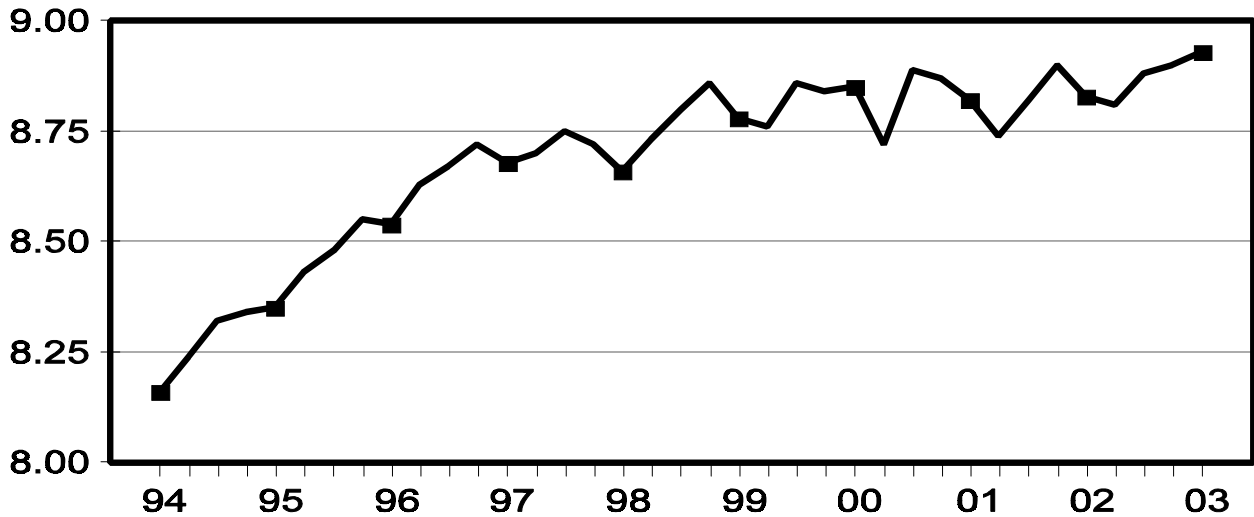
U.S. Quarterly Pig Crop September - November

Million Head



U.S. Quarterly Litter Rate September - November

Number Head



**Farrowings: Number of Sows, Pigs per Litter, and Pig Crop
by State and United States, December-February 2002-2004^{1,2}**

State	Sows Farrowing				Pigs Per Litter		Pig Crop ³		
	2002	2003	2004 ⁴		2002	2003	2002	2003	
			Number	as % of 2003				Number	as % of 2002
	<i>1,000 Head</i>	<i>1,000 Head</i>	<i>1,000 Head</i>	<i>Percent</i>	<i>Number</i>	<i>Number</i>	<i>1,000 Head</i>	<i>1,000 Head</i>	<i>Percent</i>
AR	52	41	35	85	9.20	9.70	478	398	83
CO	79	75	65	87	8.40	8.35	664	626	94
IL	210	200	200	100	8.55	8.85	1,796	1,770	99
IN	155	150	135	90	8.70	8.85	1,349	1,328	98
IA	420	410	450	110	8.60	8.50	3,612	3,485	96
KS	79	76	82	108	8.40	8.50	664	646	97
MI	50	43	50	116	9.00	8.80	450	378	84
MN	260	265	270	102	8.80	8.80	2,288	2,332	102
MO	170	170	165	97	8.85	8.85	1,505	1,505	100
NE	170	175	170	97	8.80	8.75	1,496	1,531	102
NC	540	530	540	102	8.95	9.00	4,833	4,770	99
OH	74	73	74	101	8.95	8.90	662	650	98
OK	170	170	175	103	8.75	8.80	1,488	1,496	101
PA	53	49	51	104	8.80	9.30	466	456	98
SD	70	64	70	109	8.90	9.05	623	579	93
TX	43	43	44	102	9.00	8.75	387	376	97
WI	28	29	24	83	8.45	8.60	237	249	105
Oth Sts ⁵	213	202	206	102	8.43	8.84	1,796	1,784	99
US	2,836	2,765	2,806	101	8.74	8.81	24,794	24,359	98

¹ December preceding year.

² May not add due to rounding.

³ Number of pigs born December-February that were still on hand March 1, or had been sold.

⁴ Intentions.

⁵ Individual State estimates not available for the 33 other States.

**Farrowings: Number of Sows, Pigs per Litter, and Pig Crop
by State and United States, March-May 2002-2004¹**

State	Sows Farrowing				Pigs per Litter		Pig Crop ²		
	2002	2003	2004 ³		2002	2003	2002	2003	
			Number	as % of 2003				Number	as % of 2002
	<i>1,000 Head</i>	<i>1,000 Head</i>	<i>1,000 Head</i>	<i>Percent</i>	<i>Number</i>	<i>Number</i>	<i>1,000 Head</i>	<i>1,000 Head</i>	<i>Percent</i>
AR	52	36	32	89	9.60	9.70	499	349	70
CO	76	67	63	94	8.50	8.50	646	570	88
IL	225	215	205	95	8.60	8.90	1,935	1,914	99
IN	155	145	135	93	8.80	8.95	1,364	1,298	95
IA	470	470	460	98	8.55	8.70	4,019	4,089	102
KS	82	83	82	99	8.75	8.50	718	706	98
MI	50	46	50	109	8.85	9.00	443	414	93
MN	270	280	275	98	8.95	8.95	2,417	2,506	104
MO	180	170	170	100	8.95	8.70	1,611	1,479	92
NE	175	180	175	97	9.00	8.90	1,575	1,602	102
NC	550	540	550	102	9.00	9.00	4,950	4,860	98
OH	75	73	75	103	8.95	9.00	671	657	98
OK	165	175	175	100	8.85	8.90	1,460	1,558	107
PA	54	49	52	106	8.70	9.30	470	456	97
SD	70	68	70	103	8.80	9.10	616	619	100
TX	45	49	45	92	8.90	9.00	401	441	110
WI	29	28	25	89	8.55	8.75	248	245	99
Oth Sts ⁴	220	207	207	100	8.69	8.81	1,916	1,820	95
US	2,943	2,881	2,846	99	8.82	8.88	25,959	25,583	99

¹ May not add due to rounding.

² Number of pigs born March-May that were still on hand June 1, or had been sold.

³ Intentions.

⁴ Individual State estimates not available for the 33 other States.

**Farrowings: Number of Sows, Pigs per Litter, and Pig Crop
by State and United States, June-August 2002-2003¹**

State	Sows Farrowing			Pigs per Litter		Pig Crop ²		
	2002	2003		2002	2003	2002	2003	
		Number	as % of 2002				Number	as % of 2002
	<i>1,000 Head</i>	<i>1,000 Head</i>	<i>Percent</i>	<i>Number</i>	<i>Number</i>	<i>1,000 Head</i>	<i>1,000 Head</i>	<i>Percent</i>
AR	52	35	67	9.55	9.60	497	336	68
CO	75	67	89	8.35	8.70	626	583	93
IL	210	205	98	8.75	8.85	1,838	1,814	99
IN	155	150	97	8.70	8.95	1,349	1,343	100
IA	430	430	100	8.80	8.70	3,784	3,741	99
KS	82	77	94	8.75	8.75	718	674	94
MI	55	45	82	9.05	9.00	498	405	81
MN	265	270	102	8.85	8.90	2,345	2,403	102
MO	175	170	97	8.90	8.95	1,558	1,522	98
NE	165	175	106	9.00	8.80	1,485	1,540	104
NC	560	550	98	9.10	9.00	5,096	4,950	97
OH	78	75	96	8.90	8.90	694	668	96
OK	170	180	106	9.05	9.00	1,539	1,620	105
PA	53	51	96	9.00	9.40	477	479	100
SD	69	65	94	9.05	9.30	624	605	97
TX	50	48	96	8.95	8.70	448	418	93
WI	26	29	112	8.35	8.60	217	249	115
Oth Sts ³	217	203	94	8.80	8.88	1,907	1,800	94
US	2,887	2,825	98	8.90	8.90	25,700	25,150	98

¹ May not add due to rounding.

² Number of pigs born June-August that were still on hand September 1, or had been sold.

³ Individual State estimates not available for the 33 other States.

**Farrowings: Number of Sows, Pigs per Litter, and Pig Crop
by State and United States, September-November 2002-2003¹**

State	Sows Farrowing			Pigs per Litter		Pig Crop ²		
	2002	2003		2002	2003	2002	2003	
		Number	as % of 2002				Number	as % of 2002
	<i>1,000 Head</i>	<i>1,000 Head</i>	<i>Percent</i>	<i>Number</i>	<i>Number</i>	<i>1,000 Head</i>	<i>1,000 Head</i>	<i>Percent</i>
AR	44	35	80	9.80	9.50	431	333	77
CO	75	60	80	8.60	8.40	645	504	78
IL	210	205	98	8.65	8.85	1,817	1,814	100
IN	150	145	97	8.75	8.85	1,313	1,283	98
IA	430	440	102	8.50	8.80	3,655	3,872	106
KS	79	81	103	8.70	8.70	687	705	103
MI	42	51	121	9.10	8.80	382	449	118
MN	270	280	104	8.90	9.00	2,403	2,520	105
MO	175	175	100	8.80	9.10	1,540	1,593	103
NE	170	175	103	9.05	9.00	1,539	1,575	102
NC	530	540	102	9.00	9.10	4,770	4,914	103
OH	73	74	101	8.85	8.80	646	651	101
OK	165	185	112	9.10	8.70	1,502	1,610	107
PA	53	51	96	9.00	9.50	477	485	102
SD	61	70	115	9.00	9.10	549	637	116
TX	46	33	72	8.85	8.20	407	271	67
WI	28	26	93	8.70	8.70	244	226	93
Oth Sts ³	216	210	97	8.71	8.93	1,885	1,872	99
US	2,817	2,836	101	8.83	8.93	24,892	25,314	102

¹ May not add due to rounding.

² Number of pigs born September-November that were still on hand December 1 or had been sold.

³ Individual State estimates not available for the 33 other States.

**Monthly Farrowings: Number of Sows, Pigs per Litter, and Pig Crop,
United States, December-November 2002-2003^{1 2}**

Month	Sows Farrowing		Pigs per Litter		Pig Crop	
	2002	2003	2002	2003	2002	2003
	<i>1,000 Head</i>	<i>1,000 Head</i>	<i>Number</i>	<i>Number</i>	<i>1,000 Head</i>	<i>1,000 Head</i>
Dec ¹	923	908	8.66	8.75	7,994	7,943
Jan	946	930	8.73	8.82	8,257	8,205
Feb	967	927	8.83	8.86	8,543	8,211
Mar	978	938	8.80	8.85	8,608	8,301
Apr	983	968	8.85	8.88	8,700	8,596
May	982	975	8.81	8.91	8,651	8,686
Jun	960	936	8.89	8.91	8,537	8,341
Jul	968	946	8.89	8.90	8,609	8,422
Aug	959	943	8.92	8.89	8,554	8,387
Sep	951	962	8.85	8.91	8,416	8,574
Oct	940	950	8.83	8.93	8,300	8,486
Nov	926	924	8.83	8.93	8,176	8,254
Total	11,483	11,306	8.83	8.88	101,344	100,406

¹ December preceding year.

² Monthly values may not add to quarterly or annual totals due to rounding.

Reliability of December 1 Hogs and Pigs Estimates

Survey Procedures: A random sample of roughly 14,400 U.S. producers was surveyed to provide data for these estimates. Survey procedures ensured that all hog and pig producers, regardless of size, had a chance to be included in the survey. Large producers were sampled more heavily than small operations. Data were collected from about 11,900 operations, 83 percent of the total sample, during the first-half of December by mail, telephone, and face-to-face personal interviews. Regardless of when operations responded, they were asked to report inventories as of December 1.

Estimation Procedures: These hogs and pigs estimates were prepared by the Agricultural Statistics Board after reviewing recommendations and analysis submitted by each State office. National and State survey data were reviewed for reasonableness with each other and with estimates from past years using a balance sheet. The balance sheet begins with the previous inventory estimate, adds the estimates of births and imports, and subtracts the estimates of slaughter, exports, and deaths. This indicated ending inventory level is compared to the Agricultural Statistics Board estimate for reasonableness.

Revision Policy: Revisions to previous estimates are made to improve quarter to quarter relationships. Estimates for the previous four quarters are subject to revision when current estimates are made. In December, estimates for all quarters of the current and previous year are reviewed. The reviews are primarily based on hog check-off receipts and slaughter. Estimates will also be reviewed after data from the Department of Agriculture five-year Census of Agriculture are available. No revisions will be made after that date.

Reliability: Since all operations raising hogs are not included in the sample, survey estimates are subject to sampling variability. Survey results are also subject to non-sampling errors such as omissions, duplication, and mistakes in reporting, recording, and processing the data. The affects of these errors cannot be measured directly. They are minimized through rigid quality controls in the data collection process and through a careful review of all reported data for consistency and reasonableness.

To assist users in evaluating the reliability of the estimates in this report, the "Root Mean Square Error" is shown for selected items in the following table. The "**Root Mean Square Error**" is a statistical measure based on past performance and is computed using the difference between first and final estimates. The "Root Mean Square Error" for hog inventory estimates over the past 20 quarters is 1.0 percent. This means that chances are 2 out of 3 that the final estimate will not be above or below the current estimate of 60.0 million head by more than 1.0 percent. Chances are 9 out of 10 that the difference will not exceed 1.8 percent.

Reliability of December 1 Hog Estimates ¹

Item	Root Mean Square Error	90% Confidence Level		Difference Between First and Latest Estimates			Quarters	
				Average	Smallest	Largest	First Above Latest	First Below Latest
				<i>1,000 Head</i>	<i>1,000 Head</i>	<i>1,000 Head</i>	<i>Number</i>	<i>Number</i>
All Hogs & Pigs	<i>Percent</i> 1.0	<i>Percent</i> 1.8	<i>1,000 Head</i> 1,081	<i>1,000 Head</i> 514	<i>1,000 Head</i> 40	<i>1,000 Head</i> 1,230	<i>Number</i> 7	<i>Number</i> 13
Pig Crop	1.4	2.4	608	235	0	933	12	8
Expected Farrowings								
Next Quarter	1.8	3.1	87	34	1	158	13	7
Following Quarter	2.1	3.7	105	48	1	146	13	7

¹ Based on quarterly records for the past 20 quarters.

Index

	Page
Annual Farrowings: Number of Sows, Pigs per Litter, and Pig Crop, by State and United States, December-November	14
Farrowings: Number of Sows, Pigs per Litter, and Pig Crop, by State and United States, December-February	16
Farrowings: Number of Sows, Pigs per Litter, and Pig Crop, by State and United States, June-August	18
Farrowings: Number of Sows, Pigs per Litter, and Pig Crop, by State and United States, March-May	17
Farrowings: Number of Sows, Pigs per Litter, and Pig Crop, by State and United States, September-November	19
Farrowings: Number of Sows, Pig Crop, and Pigs per Litter, United States	5
Hogs and Pigs: Breeding, Market, and Total Inventory by State and United States, December 1	6
Hogs and Pigs: Breeding, Market, and Total Inventory by State and United States, June 1	10
Hogs and Pigs: Breeding, Market, and Total Inventory by State and United States, March 1	8
Hogs and Pigs: Breeding, Market, and Total Inventory by State and United States, September 1	12
Hogs and Pigs: Inventory Number by Class, Weight Group, and Quarter, United States	4
Market Hogs and Pigs: Inventory Number by Weight Group, State, and United States, December 1	7
Market Hogs and Pigs: Inventory Number by Weight Group, State, and United States, June 1	11
Market Hogs and Pigs: Inventory Number by Weight Group, State, and United States, March 1	9
Market Hogs and Pigs: Inventory Number by Weight Group, State, and United States, September 1	13
Monthly Farrowings: Number of Sows, Pigs per Litter, and Pig Crop, United States, December-November	20
Pigs per Litter: By Size of Operation, United States	5
Reliability of Hogs and Pigs Estimates	21

The next "*Quarterly Hogs and Pigs*" report will be released at 3 p.m. ET on March 26, 2004.

The United States Department of Agriculture (USDA) prohibits discrimination in all its programs on the basis of race, color, national origin, gender, religion, age, disability, political beliefs, sexual orientation, and marital or family status. (Not all prohibited bases apply to all programs.) Persons with disabilities who require alternative means for communication of program information (braille, large print, audiotape, etc.) should contact the USDA's TARGET Center at 202-720-2600 (voice and TDD).

To file a complaint of discrimination, write USDA, Director, Office of Civil Rights, Room 326-W, Whitten Building, 1400 Independence Avenue, SW, Washington, D.C., 20250-9410, or call 202-720-5964 (voice or TDD). USDA is an equal opportunity provider and employer.

ACCESS TO REPORTS!!

For your convenience, there are several ways to obtain NASS reports, data products, and services:

INTERNET ACCESS

All NASS reports are available free of charge on the worldwide Internet. For access, connect to the Internet and go to the NASS Home Page at: <http://www.usda.gov/nass/>. Select "Today's Reports" or Publications and then Reports Calendar or Publications and then Search, by Title or Subject.

E-MAIL SUBSCRIPTION

All NASS reports are available by subscription free of charge direct to your e-mail address. Starting with the NASS Home Page at <http://www.usda.gov/nass/>, click on **Publications**, then click on the **Subscribe by E-mail** button which takes you to the page describing e-mail delivery of reports. Finally, click on **Go to the Subscription Page** and follow the instructions.

PRINTED REPORTS OR DATA PRODUCTS

CALL OUR TOLL-FREE ORDER DESK: 800-999-6779 (U.S. and Canada)
Other areas, please call 703-605-6220 FAX: 703-605-6900
(Visa, MasterCard, check, or money order acceptable for payment.)

ASSISTANCE

For **assistance** with general agricultural statistics or further information about NASS or its products or services, contact the **Agricultural Statistics Hotline** at **800-727-9540**, 7:30 a.m. to 4:00 p.m. ET, or e-mail: nass@nass.usda.gov.
