

Released March 26, 2004, by the National Agricultural Statistics Service (NASS), Agricultural Statistics Board, U.S. Department of Agriculture. For information on "Quarterly Hogs and Pigs" call Dan Lofthus at 202-720-3106, office hours 7:30 a.m. to 4:00 p.m. ET.

## U.S. Hog Inventory Up 2 Percent

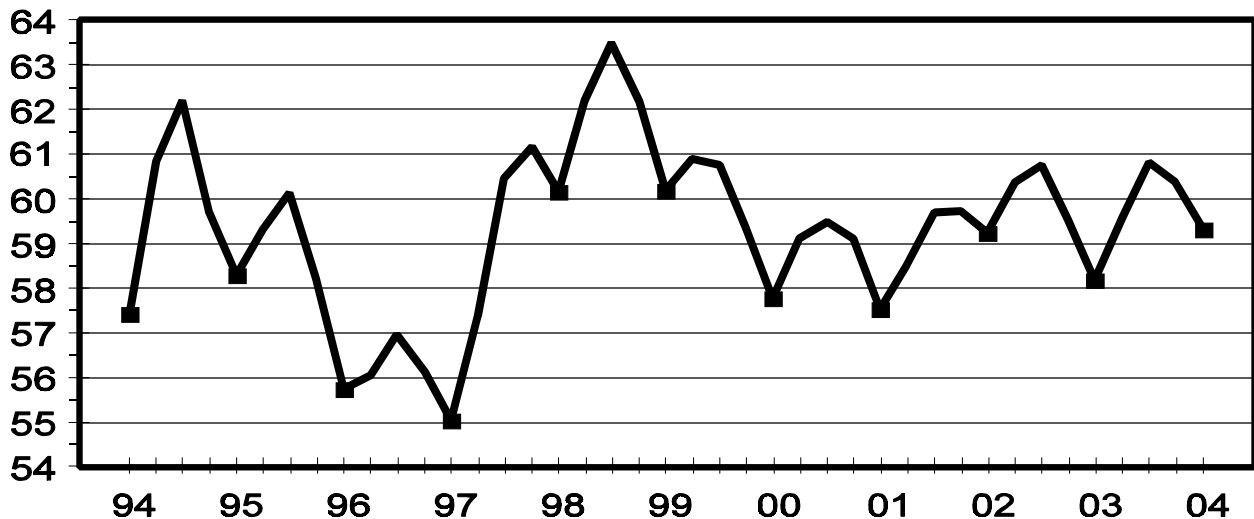
**U.S. inventory** of all hogs and pigs on March 1, 2004, was 59.3 million head. This was 2 percent above March 1, 2003, but 2 percent below December 1, 2003.

**Breeding inventory**, at 5.92 million head, was down 2 percent from March 1, 2003, and down 1 percent from last quarter. **Market hog inventory**, at 53.4 million head, was 2 percent above last year, but 2 percent below last quarter.

**The December 2003 - February 2004 U.S. pig crop**, at 24.9 million head, was 2 percent more than 2003, and up slightly from 2002. Sows farrowing during this period totaled 2.81 million head, 2 percent above last year. The sows farrowed during this quarter represented 47 percent of the breeding herd. The average pigs saved per litter was 8.85 for the December 2003 - February 2004 period, compared to 8.81 last year. Pigs saved per litter by size of operation ranged from 7.60 for operations with 1-99 hogs to 9.00 for operations with more than 5,000 hogs and pigs.

## U.S. Quarterly Hogs and Pigs Inventory March 1

Million Head



**U.S. hog producers** intend to have 2.85 million sows farrow during the March-May 2004 quarter, 1 percent below the actual farrowings during the same period in 2003, and 3 percent below 2002. Intended farrowings for June-August 2004, at 2.85 million sows, are 2 percent below the same period in 2003 and 1 percent below 2002.

The total number of hogs under contract, owned by operations with over 5,000 head, but raised by contractees, accounted for 38 percent of the total U.S. hog inventory, up from 35 percent last year.

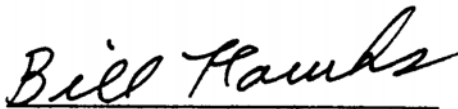
### Revisions

All inventory and pig crop estimates for March 2003 through December 2003 were reviewed using final pig crop, official slaughter, death loss, and updated import and export data. Based on the findings of this review, adjustments of less than one-half of one percent were made to the March 2003 and June 2003 total inventories. An adjustment of one percent was made to the September 2003 and December 2003 total inventories. An adjustment of less than one-half of one percent was made to the December 2002-February 2003 pig crop, March-May 2003 pig crop, and September-November 2003 pig crop. The June-August 2003 pig crop was adjusted three percent.

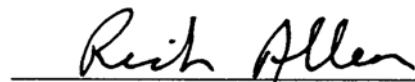
NASS has completed the 5-year historical review for March 1998 through December 2002. To ensure the continuity and availability of estimates to data users, December 1, 2003, breeding inventory, market inventory, and farrowings have been published on pages 13, 14, and 19 with any revisions. Final estimates were released on Monday, March 22, 2004, in the NASS Statistical Bulletin Number 986, Hogs and Pigs - Final Estimates 1998-2002.

---

This report was approved on March 26, 2004.



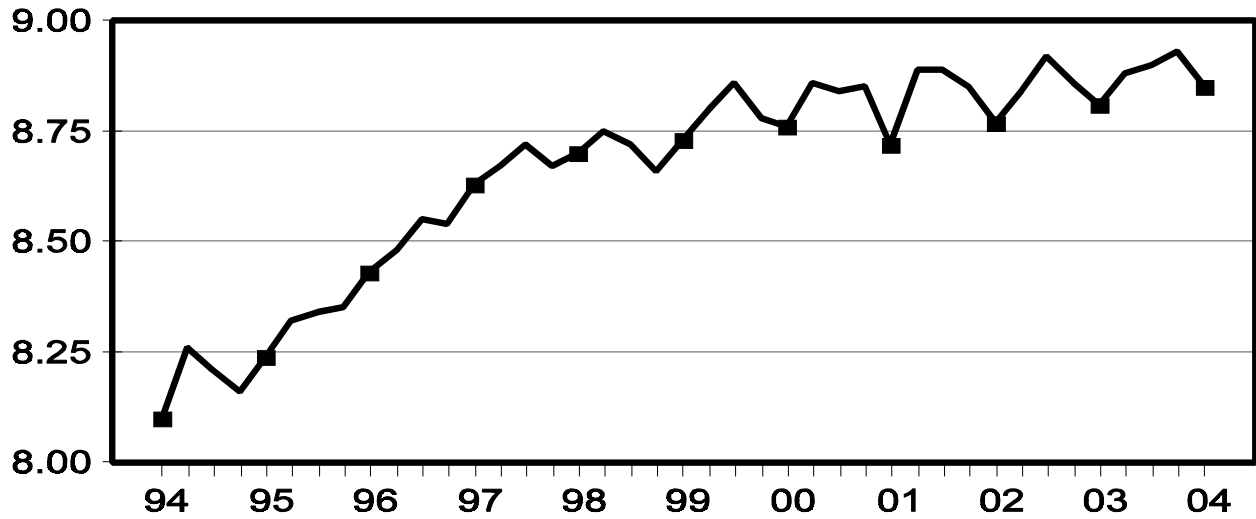
Acting Secretary of  
Agriculture  
Bill Hawks



Agricultural Statistics Board  
Chairperson  
Rich Allen

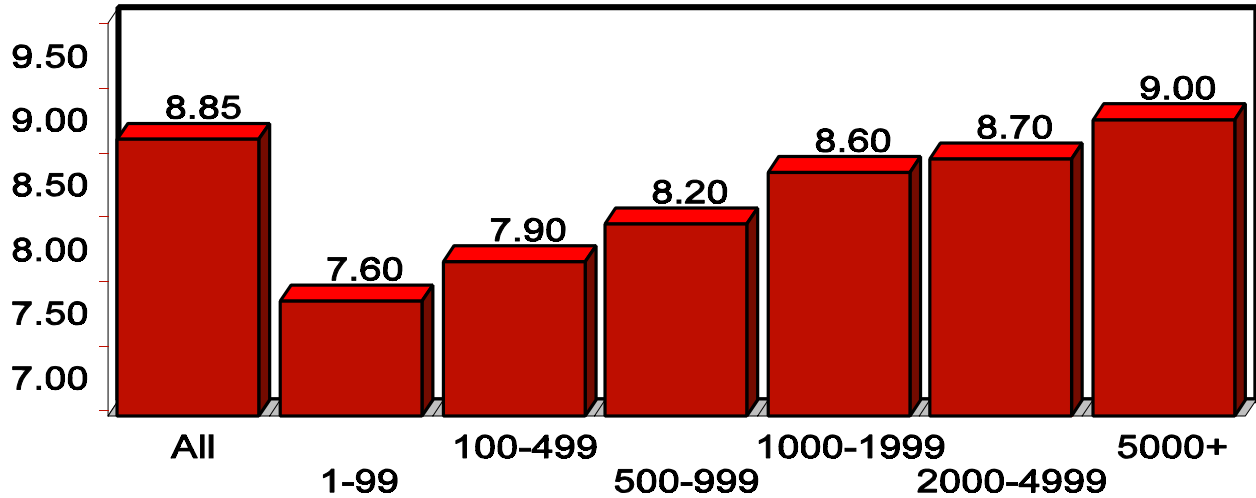
## U.S. Quarterly Litter Rate December - February

Number Head



## U.S. Pigs per Litter By Size of Operation, Dec. 2003 - Feb. 2004

Number Head



**Hogs and Pigs: Inventory Number by Class, Weight Group,  
and Quarter, United States, 2002-2004 <sup>1</sup>**

Item	2002	2003	2004	2004 as % of	
				2002	2003
	<i>1,000 Head</i>	<i>1,000 Head</i>	<i>1,000 Head</i>	<i>Percent</i>	<i>Percent</i>
March 1 Inventory					
All Hogs and Pigs	59,256	58,183	59,315	100	102
Kept for Breeding	6,230	6,017	5,915	95	98
Market	53,026	52,166	53,399	101	102
Market Hogs and Pigs by Weight Groups					
Under 60 Pounds	19,560	19,086	19,679	101	103
60-119 Pounds	12,938	12,649	12,993	100	103
120-179 Pounds	11,148	10,915	11,088	99	102
180 Pounds and Over	9,380	9,516	9,641	103	101
June 1 Inventory					
All Hogs and Pigs	60,391	59,602			
Kept for Breeding	6,208	6,006			
Market	54,183	53,596			
Market Hogs and Pigs by Weight Groups					
Under 60 Pounds	20,226	20,433			
60-119 Pounds	13,539	12,972			
120-179 Pounds	10,906	10,828			
180 Pounds and Over	9,512	9,363			
September 1 Inventory					
All Hogs and Pigs	60,753	60,829			
Kept for Breeding	6,051	5,898			
Market	54,702	54,931			
Market Hogs and Pigs by Weight Groups					
Under 60 Pounds	20,038	20,358			
60-119 Pounds	13,632	13,729			
120-179 Pounds	11,113	11,334			
180 Pounds and Over	9,919	9,510			
December 1 Inventory					
All Hogs and Pigs	59,554	60,389			
Kept for Breeding	6,058	5,965			
Market	53,496	54,423			
Market Hogs and Pigs by Weight Groups					
Under 60 Pounds	19,485	19,744			
60-119 Pounds	13,033	13,259			
120-179 Pounds	10,875	11,110			
180 Pounds and Over	10,103	10,312			

<sup>1</sup> May not add due to rounding.

**Farrowings: Number of Sows, Pig Crop, and Pigs per Litter,  
United States, 2002-2004 <sup>1</sup>**

Item	2002	2003	2004	2004 as % of	
				2002	2003
	<i>1,000 Head</i>	<i>1,000 Head</i>	<i>1,000 Head</i>	<i>Percent</i>	<i>Percent</i>
Sows Farrowing					
Dec-Feb <sup>2</sup>	2,835	2,769	2,814	99	102
Mar-May <sup>3</sup>	2,941	2,885	2,852	97	99
Dec-May <sup>2 4</sup>	5,776	5,655	5,666	98	100
Jun-Aug <sup>3</sup>	2,883	2,906	2,851	99	98
Sep-Nov	2,833	2,841			
Jun-Nov	5,716	5,746			
Pig Crop					
Dec-Feb <sup>2</sup>	24,857	24,399	24,895	100	102
Mar-May	26,001	25,627			
Dec-May <sup>2</sup>	50,858	50,027			
Jun-Aug	25,725	25,869			
Sep-Nov	25,094	25,359			
Jun-Nov	50,820	51,227			
	<i>Number</i>	<i>Number</i>	<i>Number</i>	<i>Percent</i>	<i>Percent</i>
Pigs per Litter					
Dec-Feb <sup>2</sup>	8.77	8.81	8.85	101	100
Mar-May	8.84	8.88			
Dec-May <sup>2</sup>	8.81	8.85			
Jun-Aug	8.92	8.90			
Sep-Nov	8.86	8.93			
Jun-Nov	8.89	8.91			

<sup>1</sup> May not add due to rounding.

<sup>2</sup> December preceding year.

<sup>3</sup> Intentions for 2004.

<sup>4</sup> Actual farrowings for December 2003-February 2004 plus intentions for March-May 2004.

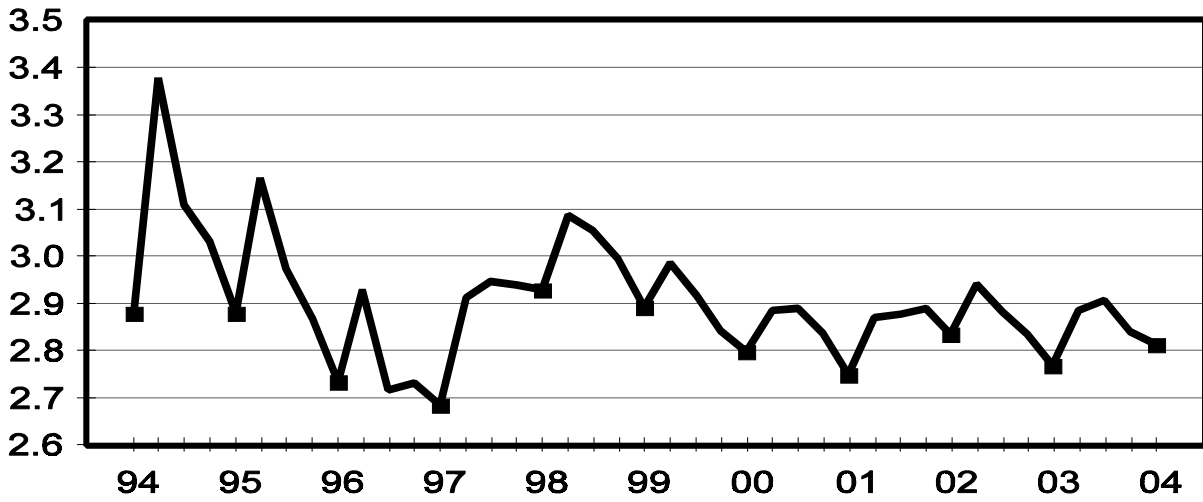
**Pigs per Litter: By Size of Operation, United States, 2003-2004**

Pig Crop	Pigs per Litter on Operations Having					
	1-99 Head	100-499 Head	500-999 Head	1,000-1,999 Head	2,000-4,999 Head	5,000+ Head
	<i>Number</i>	<i>Number</i>	<i>Number</i>	<i>Number</i>	<i>Number</i>	<i>Number</i>
2003						
Dec-Feb <sup>1</sup>	7.70	8.10	8.30	8.80	8.90	9.00
Mar-May	7.60	8.00	8.40	8.70	8.70	9.00
Jun-Aug	7.60	8.00	8.30	8.60	8.70	9.00
Sep-Nov	7.30	7.70	8.20	8.50	8.60	9.00
2004						
Dec-Feb <sup>1</sup>	7.60	7.90	8.20	8.60	8.70	9.00
Mar-May						
Jun-Aug						
Sep-Nov						

<sup>1</sup> December preceding year.

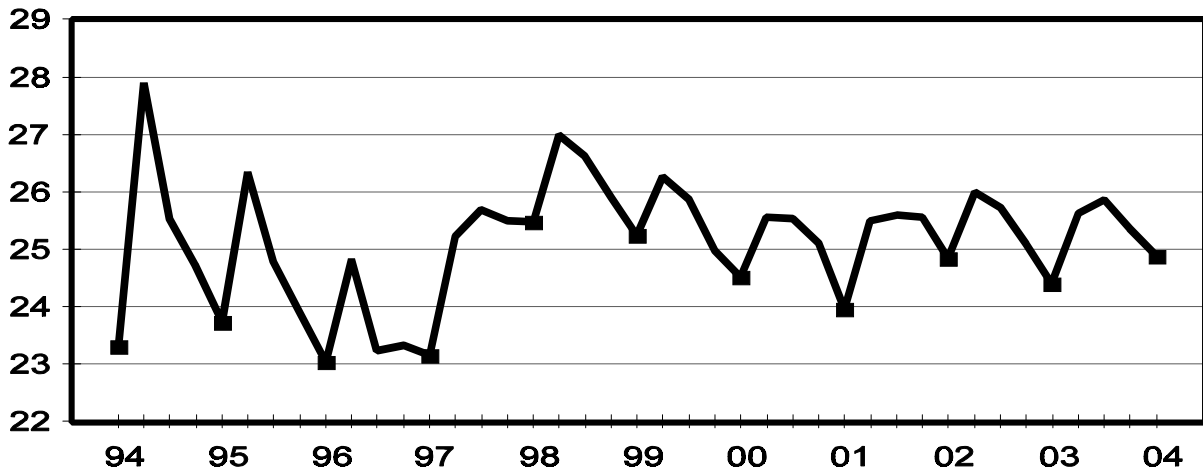
## U.S. Quarterly Sows Farrowed December - February

Million Head



## U.S. Quarterly Pig Crop December - February

Million Head



**Hogs and Pigs: Breeding, Market, and Total Inventory  
by State and United States, March 1, 2003-2004 <sup>1</sup>**

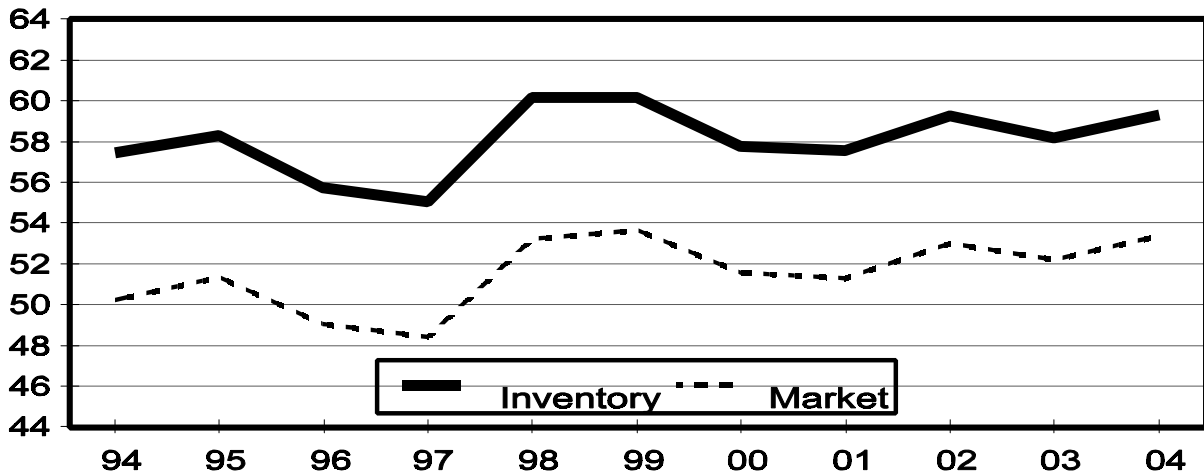
State	Breeding			Market			Total		
	2003	2004		2003	2004		2003	2004	
		Number	as % of 2003		Number	as % of 2003		Number	as % of 2003
	<i>1,000 Head</i>	<i>1,000 Head</i>	<i>Percent</i>	<i>1,000 Head</i>	<i>1,000 Head</i>	<i>Percent</i>	<i>1,000 Head</i>	<i>1,000 Head</i>	<i>Percent</i>
AR	75	85	113	200	230	115	275	315	115
CO	130	115	88	590	525	89	720	640	89
IL	420	410	98	3,530	3,440	97	3,950	3,850	97
IN	320	300	94	2,780	2,800	101	3,100	3,100	100
IA	1,060	1,040	98	13,940	14,460	104	15,000	15,500	103
KS	160	170	106	1,310	1,550	118	1,470	1,720	117
MI	100	100	100	770	830	108	870	930	107
MN	600	600	100	5,500	5,800	105	6,100	6,400	105
MO	360	330	92	2,590	2,570	99	2,950	2,900	98
NE	380	360	95	2,520	2,490	99	2,900	2,850	98
NC	1,000	1,000	100	8,600	8,900	103	9,600	9,900	103
OH	160	160	100	1,280	1,360	106	1,440	1,520	106
OK	340	350	103	2,030	2,000	99	2,370	2,350	99
PA	125	120	96	945	910	96	1,070	1,030	96
SD	145	145	100	1,155	1,095	95	1,300	1,240	95
TX	105	110	105	785	810	103	890	920	103
WI	60	55	92	440	395	90	500	450	90
Oth Sts <sup>2</sup>	477	465	98	3,201	3,234	101	3,678	3,700	101
US	6,017	5,915	98	52,166	53,399	102	58,183	59,315	102

<sup>1</sup> May not add due to rounding.

<sup>2</sup> Individual State estimates not available for the 33 other States.

## March 1 Hog Inventory & Market Hogs United States

Million Head



**Market Hogs and Pigs: Inventory Number by Weight Group,  
State, and United States, March 1, 2003-2004 <sup>1</sup>**

State	Under 60 Lbs.		60-119 Lbs.		120-179 Lbs.		180 Lbs. and Over	
	2003	2004	2003	2004	2003	2004	2003	2004
	<i>1,000 Head</i>	<i>1,000 Head</i>	<i>1,000 Head</i>	<i>1,000 Head</i>	<i>1,000 Head</i>	<i>1,000 Head</i>	<i>1,000 Head</i>	<i>1,000 Head</i>
AR	130	135	20	30	20	30	30	35
CO	305	290	85	60	85	65	115	110
IL	1,270	1,260	860	820	780	750	620	610
IN	1,040	1,010	660	660	560	610	520	520
IA	4,290	4,510	3,810	4,000	3,140	3,250	2,700	2,700
KS	430	530	250	285	250	310	380	425
MI	270	300	190	205	165	175	145	150
MN	2,110	2,200	1,320	1,420	1,190	1,200	880	980
MO	1,230	1,270	570	510	480	470	310	320
NE	1,000	980	640	640	485	460	395	410
NC	3,350	3,500	2,000	2,200	1,800	1,800	1,450	1,400
OH	525	550	305	320	280	290	170	200
OK	880	940	350	310	290	240	510	510
PA	340	300	245	240	175	205	185	165
SD	380	375	295	245	270	265	210	210
TX	220	265	210	180	155	195	200	170
WI	165	155	100	90	90	75	85	75
Oth Sts <sup>2</sup>	1,151	1,109	739	778	700	698	611	651
US	19,086	19,679	12,649	12,993	10,915	11,088	9,516	9,641

<sup>1</sup> Weight groups may not add to Market due to rounding.

<sup>2</sup> Individual State estimates not available for the 33 other States.



**Hogs and Pigs: Breeding, Market, and Total Inventory  
by State and United States, June 1, 2002-2003 <sup>1</sup>**

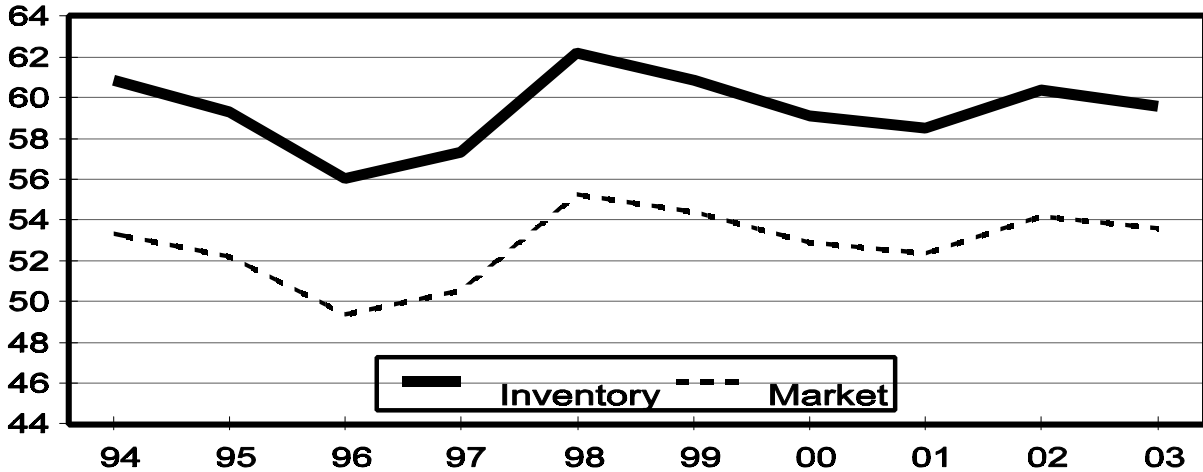
State	Breeding			Market			Total		
	2002	2003		2002	2003		2002	2003	
		Number	as % of 2002		Number	as % of 2002		Number	as % of 2002
	<i>1,000 Head</i>	<i>1,000 Head</i>	<i>Percent</i>	<i>1,000 Head</i>	<i>1,000 Head</i>	<i>Percent</i>	<i>1,000 Head</i>	<i>1,000 Head</i>	<i>Percent</i>
AR	100	75	75	495	195	39	595	270	45
CO	150	125	83	610	605	99	760	730	96
IL	450	420	93	3,850	3,630	94	4,300	4,050	94
IN	330	310	94	2,870	2,740	95	3,200	3,050	95
IA	1,130	1,070	95	14,470	14,730	102	15,600	15,800	101
KS	165	165	100	1,395	1,345	96	1,560	1,510	97
MI	110	100	91	810	830	102	920	930	101
MN	580	600	103	5,420	5,700	105	6,000	6,300	105
MO	380	340	89	2,620	2,560	98	3,000	2,900	97
NE	395	380	96	2,555	2,570	101	2,950	2,950	100
NC	1,000	1,000	100	8,900	8,800	99	9,900	9,800	99
OH	170	160	94	1,330	1,300	98	1,500	1,460	97
OK	320	360	113	2,130	1,940	91	2,450	2,300	94
PA	130	120	92	940	940	100	1,070	1,060	99
SD	140	145	104	1,130	1,185	105	1,270	1,330	105
TX	105	110	105	885	800	90	990	910	92
WI	65	60	92	465	420	90	530	480	91
Oth Sts <sup>2</sup>	488	466	96	3,308	3,306	100	3,796	3,772	99
US	6,208	6,006	97	54,183	53,596	99	60,391	59,602	99

<sup>1</sup> May not add due to rounding.

<sup>2</sup> Individual State estimates not available for the 33 other States.

## June 1 Hog Inventory & Market Hogs United States

Million Head



**Market Hogs and Pigs: Inventory Number by Weight Group,  
State, and United States, June 1, 2002-2003 <sup>1</sup>**

State	Under 60 Lbs.		60-119 Lbs.		120-179 Lbs.		180 Lbs. and Over	
	2002	2003	2002	2003	2002	2003	2002	2003
	<i>1,000 Head</i>	<i>1,000 Head</i>	<i>1,000 Head</i>	<i>1,000 Head</i>	<i>1,000 Head</i>	<i>1,000 Head</i>	<i>1,000 Head</i>	<i>1,000 Head</i>
AR	255	120	65	25	80	25	95	25
CO	305	315	95	90	95	85	115	115
IL	1,400	1,330	970	890	800	780	680	630
IN	1,040	990	740	650	570	570	520	530
IA	4,570	4,890	4,050	3,950	3,250	3,190	2,600	2,700
KS	510	445	310	285	245	255	330	360
MI	310	310	205	210	155	165	140	145
MN	2,110	2,300	1,400	1,390	1,100	1,180	810	830
MO	1,200	1,250	580	530	500	470	340	310
NE	1,050	1,020	660	680	470	495	375	375
NC	3,600	3,750	2,150	2,100	1,700	1,650	1,450	1,300
OH	530	535	335	315	290	275	175	175
OK	920	860	300	280	295	280	615	520
PA	345	350	245	220	180	190	170	180
SD	405	380	300	305	250	280	175	220
TX	290	275	235	150	160	135	200	240
WI	165	170	120	90	95	85	85	75
Oth Sts <sup>2</sup>	1,221	1,143	779	812	671	718	637	633
US	20,226	20,433	13,539	12,972	10,906	10,828	9,512	9,363

<sup>1</sup> Weight groups may not add to Market due to rounding.

<sup>2</sup> Individual State estimates not available for the 33 other States.

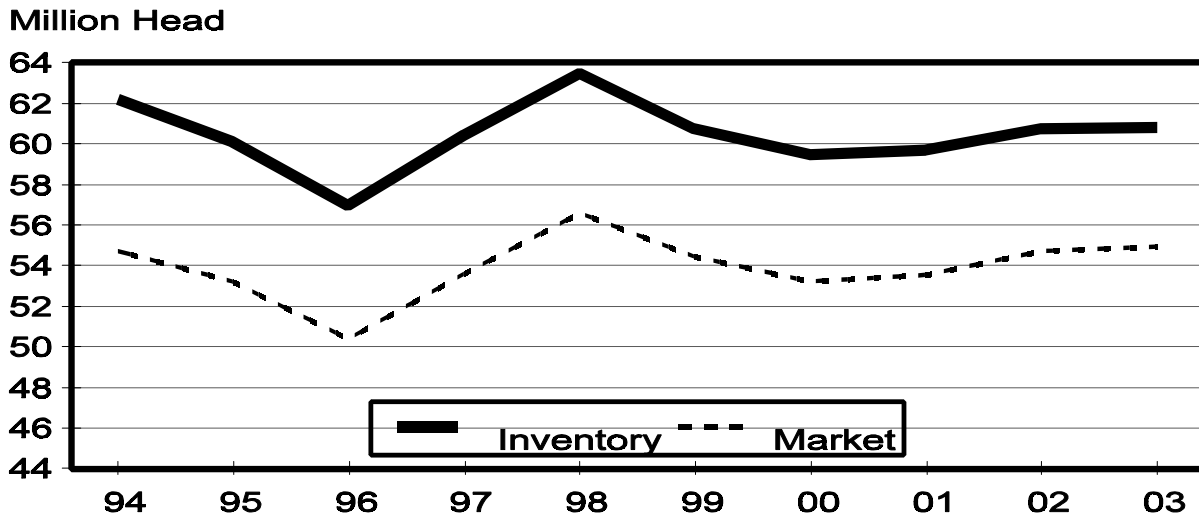
**Hogs and Pigs: Breeding, Market, and Total Inventory  
by State and United States, September 1, 2002-2003<sup>1</sup>**

State	Breeding			Market			Total		
	2002	2003		2002	2003		2002	2003	
		Number	as % of 2002		Number	as % of 2002		Number	as % of 2002
	<i>1,000 Head</i>	<i>1,000 Head</i>	<i>Percent</i>	<i>1,000 Head</i>	<i>1,000 Head</i>	<i>Percent</i>	<i>1,000 Head</i>	<i>1,000 Head</i>	<i>Percent</i>
AR	90	80	89	455	200	44	545	280	51
CO	145	110	76	615	630	102	760	740	97
IL	430	420	98	3,820	3,530	92	4,250	3,950	93
IN	330	300	91	2,870	2,750	96	3,200	3,050	95
IA	1,100	1,030	94	14,500	15,070	104	15,600	16,100	103
KS	160	165	103	1,410	1,505	107	1,570	1,670	106
MI	120	100	83	820	820	100	940	920	98
MN	580	600	103	5,620	5,900	105	6,200	6,500	105
MO	350	330	94	2,550	2,570	101	2,900	2,900	100
NE	360	375	104	2,540	2,675	105	2,900	3,050	105
NC	1,000	1,000	100	9,200	9,200	100	10,200	10,200	100
OH	160	155	97	1,340	1,325	99	1,500	1,480	99
OK	330	360	109	2,160	2,070	96	2,490	2,430	98
PA	125	120	96	955	1,010	106	1,080	1,130	105
SD	140	135	96	1,180	1,155	98	1,320	1,290	98
TX	100	95	95	900	825	92	1,000	920	92
WI	55	60	109	425	440	104	480	500	104
Oth Sts <sup>2</sup>	476	463	97	3,342	3,256	97	3,818	3,719	97
US	6,051	5,898	97	54,702	54,931	100	60,753	60,829	100

<sup>1</sup> May not add due to rounding.

<sup>2</sup> Individual State estimates not available for the 33 other States.

## September 1 Hog Inventory & Market Hogs United States



**Market Hogs and Pigs: Inventory Number by Weight Group,  
State, and United States, September 1, 2002-2003 <sup>1</sup>**

State	Under 60 Lbs.		60-119 Lbs.		120-179 Lbs.		180 Lbs. and Over	
	2002	2003	2002	2003	2002	2003	2002	2003
	<i>1,000 Head</i>	<i>1,000 Head</i>	<i>1,000 Head</i>	<i>1,000 Head</i>	<i>1,000 Head</i>	<i>1,000 Head</i>	<i>1,000 Head</i>	<i>1,000 Head</i>
AR	225	110	65	35	75	30	90	25
CO	310	325	95	95	90	90	120	120
IL	1,390	1,310	960	870	790	770	680	580
IN	1,050	1,030	720	690	570	550	530	480
IA	4,490	4,760	4,040	4,100	3,160	3,400	2,810	2,810
KS	485	500	260	350	250	235	415	420
MI	315	300	210	210	160	165	135	145
MN	2,170	2,300	1,450	1,510	1,200	1,260	800	830
MO	1,180	1,220	510	550	470	480	390	320
NE	1,000	1,060	650	700	500	510	390	405
NC	3,600	3,650	2,300	2,350	1,800	1,850	1,500	1,350
OH	540	545	320	345	290	280	190	155
OK	890	950	370	300	350	290	550	530
PA	340	360	250	240	190	200	175	210
SD	400	380	320	310	270	275	190	190
TX	265	290	240	160	195	150	200	225
WI	160	175	100	100	75	85	90	80
Oth Sts <sup>2</sup>	1,228	1,093	772	814	678	714	664	635
US	20,038	20,358	13,632	13,729	11,113	11,334	9,919	9,510

<sup>1</sup> Weight groups may not add to Market due to rounding.

<sup>2</sup> Individual State estimates not available for the 33 other States.

**Hogs and Pigs: Breeding, Market, and Total Inventory  
by State and United States, December 1, 2002-2003 <sup>1</sup>**

State	Breeding			Market			Total		
	2002	2003		2002	2003		2002	2003	
		Number	as % of 2002		Number	as % of 2002		Number	as % of 2002
	<i>1,000 Head</i>	<i>1,000 Head</i>	<i>Percent</i>	<i>1,000 Head</i>	<i>1,000 Head</i>	<i>Percent</i>	<i>1,000 Head</i>	<i>1,000 Head</i>	<i>Percent</i>
AL	12	15	125	153	150	98	165	165	100
AK	0.3	0.4	133	0.9	1.1	122	1.2	1.5	125
AZ	14	16	114	124	111	90	138	127	92
AR	80	85	106	225	225	100	305	310	102
CA	22	20	91	128	115	90	150	135	90
CO	160	110	69	630	580	92	790	690	87
CT	0.8	0.7	88	3.2	3.3	103	4.0	4.0	100
DE	3.5	3.0	86	9.5	9.0	95	13.0	12.0	92
FL	7.0	5.0	71	28.0	25.0	89	35.0	30.0	86
GA	50	48	96	295	247	84	345	295	86
HI	5.0	5.0	100	19.0	18.0	95	24.0	23.0	96
ID	3.0	4.0	133	19.0	22.0	116	22.0	26.0	118
IL	430	410	95	3,720	3,590	97	4,150	4,000	96
IN	330	300	91	2,920	2,800	96	3,250	3,100	95
IA	1,100	1,060	96	14,400	14,840	103	15,500	15,900	103
KS	160	160	100	1,370	1,490	109	1,530	1,650	108
KY	40	45	113	320	335	105	360	380	106
LA	3.0	3.0	100	17.0	17.0	100	20.0	20.0	100
ME	1.3	1.3	100	3.7	4.2	114	5.0	5.5	110
MD	6.0	6.0	100	29.0	29.0	100	35.0	35.0	100
MA	2.0	1.8	90	12.0	10.2	85	14.0	12.0	86
MI	100	110	110	770	840	109	870	950	109
MN	580	600	103	5,520	5,900	107	6,100	6,500	107
MS	29	28	97	246	277	113	275	305	111
MO	360	340	94	2,590	2,610	101	2,950	2,950	100
MT	20	18	90	155	152	98	175	170	97
NE	365	370	101	2,635	2,530	96	3,000	2,900	97
NV	1.0	1.0	100	4.5	4.5	100	5.5	5.5	100
NH	0.8	0.8	100	2.4	2.1	88	3.2	2.9	91
NJ	2.0	1.0	50	13.0	11.0	85	15.0	12.0	80
NM	0.4	0.4	100	2.6	2.1	81	3.0	2.5	83
NY	9.0	9.0	100	77.0	64.0	83	86.0	73.0	85
NC	1,000	1,000	100	8,700	9,000	103	9,700	10,000	103
ND	24	30	125	120	120	100	144	150	104
OH	155	160	103	1,285	1,360	106	1,440	1,520	106
OK	330	360	109	1,910	2,020	106	2,240	2,380	106
OR	5.0	6.0	120	21.0	21.0	100	26.0	27.0	104
PA	130	120	92	1,000	990	99	1,130	1,110	98
RI	0.6	0.5	83	1.7	1.5	88	2.3	2.0	87
SC	30	30	100	270	270	100	300	300	100
SD	140	145	104	1,190	1,135	95	1,330	1,280	96
TN	30	25	83	195	190	97	225	215	96
TX	105	105	100	825	825	100	930	930	100
UT	90	91	101	580	569	98	670	660	99
VT	0.4	0.4	100	1.6	1.4	88	2.0	1.8	90
VA	35	35	100	365	345	95	400	380	95
WA	4.0	4.0	100	25.0	23.0	92	29.0	27.0	93
WV	2.0	2.0	100	10.0	8.0	80	12.0	10.0	83
WI	60	55	92	460	425	92	520	480	92
WY	20	19	95	95	105	111	115	124	108
US	6,058	5,965	98	53,496	54,423	102	59,554	60,389	101

<sup>1</sup> May not add due to rounding.

**Market Hogs and Pigs: Inventory Number by Weight Group,  
State, and United States, December 1, 2002-2003 <sup>1</sup>**

State	Under 60 Lbs.		60-119 Lbs.		120-179 Lbs.		180 Lbs. and Over	
	2002	2003	2002	2003	2002	2003	2002	2003
	<i>1,000 Head</i>	<i>1,000 Head</i>	<i>1,000 Head</i>	<i>1,000 Head</i>	<i>1,000 Head</i>	<i>1,000 Head</i>	<i>1,000 Head</i>	<i>1,000 Head</i>
AL	67	65	29	30	28	27	29	28
AK	0.4	0.5	0.3	0.3	0.1	0.2	0.1	0.1
AZ	43	32	29	27	26	26	26	26
AR	115	120	40	30	35	30	35	45
CA	39	35	32	25	29	28	28	27
CO	350	305	90	70	80	70	110	135
CT	1.0	1.3	0.8	0.7	0.6	0.7	0.8	0.6
DE	4.0	4.0	2.5	2.0	1.5	1.5	1.5	1.5
FL	13.0	13.0	9.0	7.0	4.0	3.0	2.0	2.0
GA	138	114	67	56	50	42	40	35
HI	8.0	8.0	5.0	5.0	4.0	3.0	2.0	2.0
ID	7.0	7.0	5.0	6.0	4.0	5.0	3.0	4.0
IL	1,320	1,280	920	860	800	770	680	680
IN	1,040	990	710	670	620	580	550	560
IA	4,350	4,510	3,900	4,130	3,200	3,200	2,950	3,000
KS	440	510	320	285	290	280	320	415
KY	110	110	80	90	70	70	60	65
LA	6.0	6.0	4.0	5.0	4.0	3.0	3.0	3.0
ME	2.2	2.3	0.8	1.0	0.4	0.5	0.3	0.4
MD	8.0	9.0	5.0	6.0	7.0	7.0	9.0	7.0
MA	3.9	3.3	3.8	2.8	2.6	2.4	1.7	1.7
MI	285	300	180	205	155	175	150	160
MN	2,110	2,210	1,350	1,420	1,130	1,250	930	1,020
MS	90	34	59	81	50	81	47	81
MO	1,190	1,280	530	530	480	460	390	340
MT	51	50	39	37	34	35	31	30
NE	1,040	960	690	650	500	490	405	430
NV	1.3	1.3	1.3	1.2	0.9	1.0	1.0	1.0
NH	0.9	0.6	0.3	0.7	0.7	0.5	0.5	0.3
NJ	2.0	1.0	2.0	2.0	3.0	3.0	6.0	5.0
NM	1.3	1.0	0.5	0.3	0.3	0.3	0.5	0.5
NY	30.0	24.0	17.0	15.0	15.0	13.0	15.0	12.0
NC	3,450	3,550	2,050	2,200	1,700	1,750	1,500	1,500
ND	48	50	29	30	23	21	20	19
OH	525	540	310	330	275	280	175	210
OK	910	920	260	320	160	320	580	460
OR	8.0	8.0	5.0	6.0	4.0	3.0	4.0	4.0
PA	355	350	250	235	200	195	195	210
RI	0.6	0.6	0.5	0.4	0.3	0.2	0.3	0.3
SC	65	65	70	70	55	60	80	75
SD	370	385	310	250	280	280	230	220
TN	75	77	42	43	42	36	36	34
TX	240	245	240	195	180	200	165	185
UT	230	245	120	123	130	123	100	78
VT	0.6	0.6	0.3	0.2	0.2	0.2	0.5	0.4
VA	125	105	85	80	80	70	75	90
WA	9.0	8.0	7.0	6.0	5.0	5.0	4.0	4.0
WV	4.0	3.0	3.0	1.0	1.0	1.0	2.0	3.0
WI	165	165	110	95	95	85	90	80
WY	38	39	19	23	19	22	19	21
US	19,485	19,744	13,033	13,259	10,875	11,110	10,103	10,312

<sup>1</sup> Weight groups may not add to Market due to rounding.

**Farrowings: Number of Sows, Pigs per Litter, and Pig Crop  
by State and United States, December-February 2003-2004<sup>1 2</sup>**

State	Sows Farrowing			Pigs per Litter		Pig Crop <sup>3</sup>		
	2003	2004		2003	2004	2003	2004	
		Number	as % of 2003				Number	as % of 2003
	<i>1,000 Head</i>	<i>1,000 Head</i>	<i>Percent</i>	<i>Number</i>	<i>Number</i>	<i>1,000 Head</i>	<i>1,000 Head</i>	<i>Percent</i>
AR	41	38	93	9.70	9.60	398	365	92
CO	75	60	80	8.35	8.00	626	480	77
IL	200	205	103	8.85	8.85	1,770	1,814	102
IN	150	145	97	8.85	8.85	1,328	1,283	97
IA	410	400	98	8.50	8.70	3,485	3,480	100
KS	76	84	111	8.50	8.70	646	731	113
MI	43	45	105	8.80	8.90	378	401	106
MN	265	285	108	8.80	9.05	2,332	2,579	111
MO	170	170	100	8.85	9.00	1,505	1,530	102
NE	180	175	97	8.75	8.90	1,575	1,558	99
NC	530	550	104	9.00	8.95	4,770	4,923	103
OH	73	74	101	8.90	8.80	650	651	100
OK	170	185	109	8.80	8.60	1,496	1,591	106
PA	49	53	108	9.30	8.50	456	451	99
SD	64	70	109	9.05	9.20	579	644	111
TX	43	46	107	8.75	8.40	376	386	103
WI	29	24	83	8.60	8.80	249	211	85
Oth Sts <sup>4</sup>	201	205	102	8.84	8.86	1,780	1,817	102
US	2,769	2,814	102	8.81	8.85	24,399	24,895	102

<sup>1</sup> May not add due to rounding.

<sup>2</sup> December preceding year.

<sup>3</sup> Number of pigs born December-February that were still on hand March 1 or had been sold.

<sup>4</sup> Individual State estimates not available for the 33 other States.

**Farrowings: Number of Sows, Pigs per Litter, and Pig Crop  
by State and United States, March-May 2002-2004 <sup>1</sup>**

State	Sows Farrowing				Pigs per Litter		Pig Crop <sup>2</sup>		
	2002	2003	2004 <sup>3</sup>		2002	2003	2002	2003	
			Number	as % of 2003				Number	as % of 2002
	<i>1,000 Head</i>	<i>1,000 Head</i>	<i>1,000 Head</i>	<i>Percent</i>	<i>Number</i>	<i>Number</i>	<i>1,000 Head</i>	<i>1,000 Head</i>	<i>Percent</i>
AR	52	36	45	125	9.60	9.70	499	349	70
CO	76	67	63	94	8.50	8.50	646	570	88
IL	220	215	205	95	8.80	8.90	1,936	1,914	99
IN	155	145	140	97	8.80	8.95	1,364	1,298	95
IA	470	470	430	91	8.55	8.70	4,019	4,089	102
KS	82	83	85	102	8.75	8.50	718	706	98
MI	49	46	47	102	8.85	9.00	434	414	95
MN	270	280	285	102	8.95	8.95	2,417	2,506	104
MO	180	170	165	97	9.05	8.70	1,629	1,479	91
NE	185	185	175	95	9.00	8.90	1,665	1,647	99
NC	550	540	550	102	9.00	9.00	4,950	4,860	98
OH	75	73	76	104	8.95	9.00	671	657	98
OK	165	175	180	103	8.85	8.90	1,460	1,558	107
PA	53	49	54	110	8.70	9.30	461	456	99
SD	69	68	72	106	8.80	9.10	607	619	102
TX	45	49	51	104	8.90	9.00	401	441	110
WI	29	28	23	82	8.55	8.75	248	245	99
Oth Sts <sup>4</sup>	216	206	206	100	8.70	8.82	1,876	1,819	97
US	2,941	2,885	2,852	99	8.84	8.88	26,001	25,627	99

<sup>1</sup> May not add due to rounding.

<sup>2</sup> Number of pigs born March-May that were still on hand June 1 or had been sold.

<sup>3</sup> Intentions.

<sup>4</sup> Individual State estimates not available for the 33 other States.



**Farrowings: Number of Sows, Pigs per Litter, and Pig Crop  
by State and United States, June-August 2002-2004 <sup>1</sup>**

State	Sows Farrowing				Pigs per Litter		Pig Crop <sup>2</sup>		
	2002	2003	2004 <sup>3</sup>		2002	2003	2002	2003	
			Number	as % of 2003				Number	as % of 2002
	<i>1,000 Head</i>	<i>1,000 Head</i>	<i>1,000 Head</i>	<i>Percent</i>	<i>Number</i>	<i>Number</i>	<i>1,000 Head</i>	<i>1,000 Head</i>	<i>Percent</i>
AR	52	37	40	108	9.55	9.60	497	355	71
CO	75	68	62	91	8.35	8.70	626	592	95
IL	210	215	205	95	8.90	8.85	1,869	1,903	102
IN	150	150	140	93	8.70	8.95	1,305	1,343	103
IA	430	450	440	98	8.80	8.70	3,784	3,915	103
KS	82	80	86	108	8.75	8.75	718	700	97
MI	54	47	45	96	9.05	9.00	489	423	87
MN	265	275	285	104	8.85	8.90	2,345	2,448	104
MO	170	170	165	97	9.05	8.95	1,539	1,522	99
NE	175	185	175	95	9.00	8.80	1,575	1,628	103
NC	560	560	550	98	9.10	9.00	5,096	5,040	99
OH	78	76	75	99	8.90	8.90	694	676	97
OK	170	185	180	97	9.05	9.00	1,539	1,665	108
PA	53	51	54	106	9.00	9.40	477	479	100
SD	69	70	70	100	9.05	9.30	624	651	104
TX	50	49	52	106	8.95	8.70	448	426	95
WI	26	29	24	83	8.35	8.60	217	249	115
Oth Sts <sup>4</sup>	214	209	203	97	8.80	8.88	1,883	1,854	98
US	2,883	2,906	2,851	98	8.92	8.90	25,725	25,869	101

<sup>1</sup> May not add due to rounding.

<sup>2</sup> Number of pigs born June-August that were still on hand September 1 or had been sold.

<sup>3</sup> Intentions.

<sup>4</sup> Individual State estimates not available for the 33 other States.

**Farrowings: Number of Sows, Pigs per Litter, and Pig Crop  
by State and United States, September-November 2002-2003<sup>1</sup>**

State	Sows Farrowing			Pigs per Litter		Pig Crop <sup>2</sup>		
	2002	2003		2002	2003	2002	2003	
		Number	as % of 2002				Number	as % of 2002
	<i>1,000 Head</i>	<i>1,000 Head</i>	<i>Percent</i>	<i>Number</i>	<i>Number</i>	<i>1,000 Head</i>	<i>1,000 Head</i>	<i>Percent</i>
AR	44	35	80	9.80	9.50	431	333	77
CO	75	60	80	8.60	8.40	645	504	78
IL	210	205	98	8.85	8.85	1,859	1,814	98
IN	145	145	100	8.75	8.85	1,269	1,283	101
IA	440	440	100	8.50	8.80	3,740	3,872	104
KS	79	81	103	8.70	8.70	687	705	103
MI	42	51	121	9.10	8.80	382	449	118
MN	275	280	102	8.90	9.00	2,448	2,520	103
MO	170	175	103	8.95	9.10	1,522	1,593	105
NE	180	180	100	9.05	9.00	1,629	1,620	99
NC	530	540	102	9.00	9.10	4,770	4,914	103
OH	73	74	101	8.85	8.80	646	651	101
OK	165	185	112	9.10	8.70	1,502	1,610	107
PA	53	51	96	9.00	9.50	477	485	102
SD	61	70	115	9.00	9.10	549	637	116
TX	46	33	72	8.85	8.20	407	271	67
WI	28	26	93	8.70	8.70	244	226	93
Oth Sts <sup>3</sup>	217	210	97	8.71	8.93	1,887	1,872	99
US	2,833	2,841	100	8.86	8.93	25,094	25,359	101

<sup>1</sup> May not add due to rounding.

<sup>2</sup> Number of pigs born September-November that were still on hand December 1 or had been sold.

<sup>3</sup> Individual State estimates not available for the 33 other States.

**Annual Farrowings: Number of Sows, Pigs per Litter, and Pig Crop  
by State and United States, December-November 2002-2003<sup>1 2</sup>**

State	Sows Farrowing			Pigs per Litter		Pig Crop		
	2002	2003		2002	2003	2002	2003	
		Number	as % of 2002				Number	as % of 2002
	<i>1,000 Head</i>	<i>1,000 Head</i>	<i>Percent</i>	<i>Number</i>	<i>Number</i>	<i>1,000 Head</i>	<i>1,000 Head</i>	<i>Percent</i>
AL	24.0	25.0	104	9.04	8.80	217.0	220.0	101
AK	0.26	0.32	123	9.15	9.28	2.38	2.97	125
AZ	33.0	30.0	91	7.91	8.33	261.0	250.0	96
AR	200	149	75	9.53	9.63	1,905	1,435	75
CA	35.0	34.0	97	8.69	9.44	304.0	321.0	106
CO	305	270	89	8.46	8.49	2,581	2,292	89
CT	0.80	0.80	100	8.00	8.10	6.40	6.48	101
DE	8.00	6.00	75	7.00	8.67	56.00	52.00	93
FL	13.00	10.00	77	7.00	7.00	91.00	70.00	77
GA	100.0	96.0	96	8.84	8.81	884.0	846.0	96
HI	4.50	4.30	96	7.11	7.21	32.00	31.00	97
ID	5.60	5.90	105	7.50	8.31	42.00	49.00	117
IL	850	835	98	8.83	8.86	7,502	7,401	99
IN	605	590	98	8.74	8.90	5,287	5,252	99
IA	1,750	1,770	101	8.61	8.68	15,069	15,361	102
KS	322	320	99	8.66	8.62	2,787	2,757	99
KY	89.0	75.0	84	8.57	8.59	763.0	644.0	84
LA	4.60	4.60	100	6.96	7.39	32.00	34.00	106
ME	1.90	1.80	95	6.50	7.00	12.35	12.60	102
MD	9.00	8.00	89	7.78	8.00	70.00	64.00	91
MA	2.40	2.30	96	7.25	7.90	17.40	18.17	104
MI	195	187	96	9.00	8.90	1,755	1,664	95
MN	1,070	1,100	103	8.88	8.91	9,498	9,806	103
MS	59.0	60.0	102	8.51	8.60	502.0	516.0	103
MO	690	685	99	9.01	8.90	6,220	6,099	98
MT	36.0	37.0	103	9.11	9.14	328.0	338.0	103
NE	720	730	101	8.96	8.86	6,453	6,470	100
NV	0.80	0.68	85	8.20	7.66	6.56	5.21	79
NH	0.90	0.80	89	8.50	6.50	7.65	5.20	68
NJ	2.10	0.80	38	8.38	7.00	17.60	5.60	32
NM	0.40	0.40	100	7.25	7.50	2.90	3.00	103
NY	14.50	14.00	97	8.62	9.14	125.00	128.00	102
NC	2,180	2,170	100	9.01	9.02	19,649	19,584	100
ND	52.5	48.0	91	8.46	8.94	444.0	429.0	97
OH	300	296	99	8.91	8.90	2,673	2,634	99
OK	670	715	107	8.94	8.85	5,989	6,329	106
OR	6.20	6.40	103	8.71	8.44	54.00	54.00	100
PA	212	200	94	8.87	9.38	1,881	1,876	100
RI	0.60	0.50	83	6.50	7.00	3.90	3.50	90
SC	57.0	53.0	93	8.96	9.00	511.0	477.0	93
SD	269	272	101	8.93	9.14	2,403	2,486	103
TN	51.0	51.0	100	8.33	8.41	425.0	429.0	101
TX	184	174	95	8.93	8.70	1,643	1,514	92
UT	137.0	136.0	99	9.07	9.35	1,242.0	1,272.0	102
VT	0.50	0.50	100	8.50	7.50	4.25	3.75	88
VA	60.0	61.0	102	9.13	9.38	548.0	572.0	104
WA	5.00	4.50	90	8.40	8.44	42.00	38.00	90
WV	2.20	2.50	114	7.95	7.40	17.50	18.50	106
WI	111	112	101	8.52	8.65	946	969	102
WY	42.0	45.0	107	8.69	9.02	365.0	406.0	111
US	11,492	11,401	99	8.85	8.88	101,678	101,254	100

<sup>1</sup> December preceding year.

<sup>2</sup> May not add due to rounding.

**Monthly Farrowings: Number of Sows, Pigs per Litter, and Pig Crop,  
United States, December-November 2003-2004<sup>1 2</sup>**

Month	Sows Farrowing		Pigs per Litter		Pig Crop	
	2003	2004	2003	2004	2003	2004
	<i>1,000 Head</i>	<i>1,000 Head</i>	<i>Number</i>	<i>Number</i>	<i>1,000 Head</i>	<i>1,000 Head</i>
Dec <sup>1</sup>	907	925	8.75	8.84	7,940	8,176
Jan	930	951	8.82	8.83	8,202	8,400
Feb	932	938	8.86	8.87	8,257	8,319
Mar	946		8.85		8,372	
Apr	966		8.88		8,581	
May	973		8.91		8,674	
Jun	961		8.91		8,567	
Jul	974		8.90		8,670	
Aug	971		8.89		8,632	
Sep	962		8.91		8,575	
Oct	949		8.93		8,478	
Nov	930		8.93		8,305	
Total	11,401		8.88		101,254	

<sup>1</sup> December preceding year.

<sup>2</sup> Monthly values may not add to quarterly or annual totals due to rounding.

## Reliability of March 1 Hogs and Pigs Estimates

**Survey Procedures:** A random sample of roughly 11,600 U.S. producers was surveyed to provide data for these estimates. Survey procedures ensured that all hog and pig producers, regardless of size, had a chance to be included in the survey. Large producers were sampled more heavily than small operations. Data were collected from about 9,500 operations, 82 percent of the total sample, during the first-half of March by mail, telephone, and face-to-face personal interviews. Regardless of when operations responded, they were asked to report inventories as of March 1.

**Estimation Procedures:** These hogs and pigs estimates were prepared by the Agricultural Statistics Board after reviewing recommendations and analysis submitted by each State office. National and State survey data were reviewed for reasonableness with each other and with estimates from past years using a balance sheet. The balance sheet begins with the previous inventory estimate, adds the estimates of births and imports, and subtracts the estimates of slaughter, exports, and deaths. This indicated ending inventory level is compared to the Agricultural Statistics Board estimate for reasonableness.

**Revision Policy:** Revisions to previous estimates are made to improve quarter to quarter relationships. Estimates for the previous four quarters are subject to revision when current estimates are made. In December, estimates for all quarters of the current and previous year are reviewed. The reviews are primarily based on hog check-off receipts and slaughter. Estimates will also be reviewed after data from the Department of Agriculture five-year Census of Agriculture are available. No revisions will be made after that date.

**Reliability:** Since all operations raising hogs are not included in the sample, survey estimates are subject to sampling variability. Survey results are also subject to non-sampling errors such as omissions, duplication, and mistakes in reporting, recording, and processing the data. The affects of these errors cannot be measured directly. They are minimized through rigid quality controls in the data collection process and through a careful review of all reported data for consistency and reasonableness.

To assist users in evaluating the reliability of the estimates in this report, the "Root Mean Square Error" is shown for selected items in the following table. The "**Root Mean Square Error**" is a statistical measure based on past performance and is computed using the difference between first and final estimates. The "Root Mean Square Error" for hog inventory estimates over the past 20 quarters is 1.1 percent. This means that chances are 2 out of 3 that the final estimate will not be above or below the current estimate of 59.3 million head by more than 1.1 percent. Chances are 9 out of 10 that the difference will not exceed 1.9 percent.

**Reliability of March 1 Hog Estimates <sup>1</sup>**

Item	Root Mean Square Error	90% Confidence Level		Difference Between First and Latest Estimates			Quarters	
				Average	Smallest	Largest	First Above Latest	First Below Latest
				<i>1,000 Head</i>	<i>1,000 Head</i>	<i>1,000 Head</i>	<i>Number</i>	<i>Number</i>
All Hogs & Pigs	1.1	1.9	1,127	571	38	1,208	7	13
Pig Crop	1.6	2.7	675	297	5	926	10	10
Expected Farrowings								
Next Quarter	1.9	3.3	94	40	2	158	11	9
Following Quarter	2.3	3.9	228	51	2	146	12	8

<sup>1</sup> Based on quarterly records for the past 20 quarters.

## Index

## Page

Annual Farrowings: Number of Sows, Pigs per Litter, and Pig Crop by State and United States, December-November .....	19
Farrowings: Number of Sows, Pig Crop, and Pigs per Litter, United States .....	5
Farrowings: Number of Sows, Pigs per Litter, and Pig Crop by State and United States, December-February .....	15
Farrowings: Number of Sows, Pigs per Litter, and Pig Crop by State and United States, June-August .....	17
Farrowings: Number of Sows, Pigs per Litter, and Pig Crop by State and United States, March-May .....	16
Farrowings: Number of Sows, Pigs per Litter, and Pig Crop by State and United States, September-November .....	18
Hogs and Pigs: Breeding, Market, and Total Inventory by State and United States, December 1 .....	13
Hogs and Pigs: Breeding, Market, and Total Inventory by State and United States, June 1 .....	9
Hogs and Pigs: Breeding, Market, and Total Inventory by State and United States, March 1 .....	7
Hogs and Pigs: Breeding, Market, and Total Inventory by State and United States, September 1 .....	11
Hogs and Pigs: Inventory Number by Class, Weight Group, and Quarter, United States .....	4
Market Hogs and Pigs: Inventory Number by Weight Group, State, and United States, December 1 .....	14
Market Hogs and Pigs: Inventory Number by Weight Group, State, and United States, June 1 .....	10
Market Hogs and Pigs: Inventory Number by Weight Group, State, and United States, March 1 .....	8
Market Hogs and Pigs: Inventory Number by Weight Group, State, and United States, September 1 .....	12
Monthly Farrowings: Number of Sows, Pigs per Litter, and Pig Crop, United States, December-November .....	20
Pigs per Litter: By Size of Operation, United States .....	5
Reliability of Hogs and Pigs Estimates .....	21

The next "*Quarterly Hogs and Pigs*" report will be released at 3 p.m. ET on June 25, 2004.

The United States Department of Agriculture (USDA) prohibits discrimination in all its programs on the basis of race, color, national origin, gender, religion, age, disability, political beliefs, sexual orientation, and marital or family status. (Not all prohibited bases apply to all programs.) Persons with disabilities who require alternative means for communication of program information (braille, large print, audiotape, etc.) should contact the USDA's TARGET Center at 202-720-2600 (voice and TDD).

To file a complaint of discrimination, write USDA, Director, Office of Civil Rights, Room 326-W, Whitten Building, 1400 Independence Avenue, SW, Washington, D.C., 20250-9410, or call 202-720-5964 (voice or TDD). USDA is an equal opportunity provider and employer.

## ACCESS TO REPORTS!!

---

For your convenience, there are several ways to obtain NASS reports, data products, and services:

### INTERNET ACCESS

All NASS reports are available free of charge on the worldwide Internet. For access, connect to the Internet and go to the NASS Home Page at: [www.usda.gov/nass/](http://www.usda.gov/nass/). Select "Today's Reports" or Publications and then Reports Calendar or Publications and then Search, by Title or Subject.

### E-MAIL SUBSCRIPTION

All NASS reports are available by subscription free of charge direct to your e-mail address. Starting with the NASS Home Page at [www.usda.gov/nass/](http://www.usda.gov/nass/), click on **Publications**, then click on the **Subscribe by E-mail** button which takes you to the page describing e-mail delivery of reports. Finally, click on **Go to the Subscription Page** and follow the instructions.

-----

### PRINTED REPORTS OR DATA PRODUCTS

**CALL OUR TOLL-FREE ORDER DESK: 800-999-6779 (U.S. and Canada)**  
**Other areas, please call 703-605-6220      FAX: 703-605-6900**  
**(Visa, MasterCard, check, or money order acceptable for payment.)**

-----

### ASSISTANCE

For **assistance** with general agricultural statistics or further information about NASS or its products or services, contact the **Agricultural Statistics Hotline** at **800-727-9540**, 7:30 a.m. to 4:00 p.m. ET, or e-mail: [nass@nass.usda.gov](mailto:nass@nass.usda.gov).

---