

Released June 25, 2004, by the National Agricultural Statistics Service (NASS), Agricultural Statistics Board, U.S. Department of Agriculture. For information on *Quarterly Hogs and Pigs* call Dan Lofthus at 202-720-3106, office hours 7:30 a.m. to 4:00 p.m. ET.

U.S. Hog Inventory Up 1 Percent

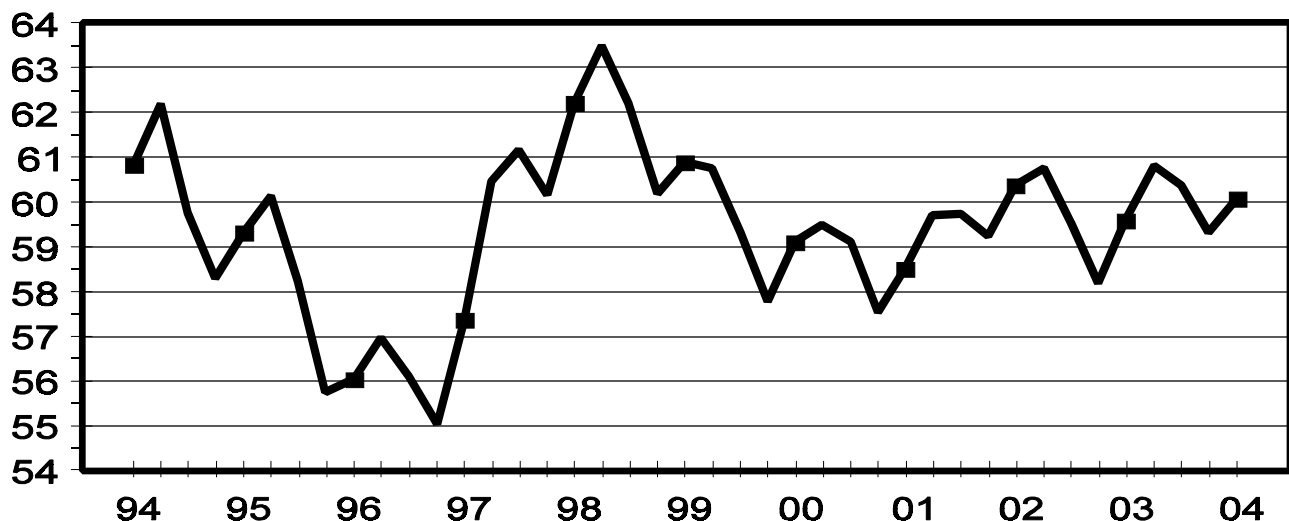
U.S. inventory of all hogs and pigs on June 1, 2004 was 60.1 million head. This was 1 percent above both June 1, 2003 and March 1, 2004.

Breeding inventory, at 5.91 million head, was down 2 percent from June 1, 2003, and down slightly from last quarter. **Market hog inventory**, at 54.2 million head, was 1 percent above both last year and last quarter.

The March - May 2004 U.S. pig crop, at 25.5 million head, was down less than one-half of one percent from 2003, and down 2 percent from 2002. Sows farrowing during this period totaled 2.86 million head, 1 percent below last year. The sows farrowed during this quarter represented 48 percent of the breeding herd. The average pigs saved per litter was 8.93 for the March - May 2004 period, compared to 8.88 last year. Pigs saved per litter by size of operation ranged from 7.70 for operations with 1-99 hogs to 9.00 for operations with more than 5,000 hogs and pigs.

U.S. Quarterly Hogs and Pigs Inventory June 1

Million Head



U.S. hog producers intend to have 2.87 million sows farrow during the June-August 2004 quarter, 1 percent below the actual farrowings during the same period in both 2003 and 2002. Intended farrowings for September-November 2004, at 2.84 million sows, are down slightly from the same period in 2003, but up slightly from the same period in 2002.

The total number of hogs under contract, owned by operations with over 5,000 head, but raised by contractees, accounted for 38 percent of the total U.S. hog inventory, up from 35 percent last year.

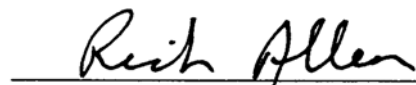
Revisions

All inventory and pig crop estimates for June 2003 through March 2004 were reviewed using final pig crop, official slaughter, death loss, and updated import and export data. Based on the findings of this review small adjustments were made within inventory components for March 2004. No adjustment was made to March 2004 total inventory.

This report was approved on June 25, 2004.



Acting Secretary of
Agriculture
James R. Moseley



Agricultural Statistics Board
Chairperson
Rich Allen

Contents

Page

Quarterly U.S. Inventory by Class and Weight Group, 2002-2004	1
Quarterly U.S. Sows Farrowed, Pig Crop, and Pigs per Litter, 2002-2004	2
Hogs and Pigs: Inventory by State and U.S., 2002-2004	
March 1.	5
June 1.	7
September 1	9
December 1	11
Farrowings: Number of Sows, Pigs per Litter, Pig Crop by State and U.S., 2002-2004	
December-February.	13
March-May.	14
June-August.	15
September-November.	16
Monthly U.S. Farrowings, December-November 2003-2004.	17
Reliability Statement.	18
Index.	20

**Hogs and Pigs: Inventory Number by Class, Weight Group,
and Quarter, United States, 2002-2004¹**

Item	2002	2003	2004	2004 as % of	
				2002	2003
	<i>1,000 Head</i>	<i>1,000 Head</i>	<i>1,000 Head</i>	<i>Percent</i>	<i>Percent</i>
March 1 Inventory					
All Hogs and Pigs	59,256	58,183	59,315	100	102
Kept for Breeding	6,230	6,017	5,917	95	98
Market	53,026	52,166	53,397	101	102
Market Hogs and Pigs by Weight Groups					
Under 60 Pounds	19,560	19,086	19,684	101	103
60-119 Pounds	12,938	12,649	12,990	100	103
120-179 Pounds	11,148	10,915	11,146	100	102
180 Pounds and Over	9,380	9,516	9,579	102	101
June 1 Inventory					
All Hogs and Pigs	60,391	59,602	60,083	99	101
Kept for Breeding	6,208	6,006	5,913	95	98
Market	54,183	53,596	54,169	100	101
Market Hogs and Pigs by Weight Groups					
Under 60 Pounds	20,226	20,433	20,308	100	99
60-119 Pounds	13,539	12,972	13,251	98	102
120-179 Pounds	10,906	10,828	11,077	102	102
180 Pounds and Over	9,512	9,363	9,535	100	102
September 1 Inventory					
All Hogs and Pigs	60,753	60,829			
Kept for Breeding	6,051	5,898			
Market	54,702	54,931			
Market Hogs and Pigs by Weight Groups					
Under 60 Pounds	20,038	20,358			
60-119 Pounds	13,632	13,729			
120-179 Pounds	11,113	11,334			
180 Pounds and Over	9,919	9,510			
December 1 Inventory					
All Hogs and Pigs	59,554	60,389			
Kept for Breeding	6,058	5,965			
Market	53,496	54,423			
Market Hogs and Pigs by Weight Groups					
Under 60 Pounds	19,485	19,744			
60-119 Pounds	13,033	13,259			
120-179 Pounds	10,875	11,110			
180 Pounds and Over	10,103	10,312			

¹ May not add due to rounding.

**Farrowings: Number of Sows, Pig Crop, and Pigs per Litter,
United States, 2002-2004¹**

Item	2002	2003	2004	2004 as % of	
				2002	2003
	<i>1,000 Head</i>	<i>1,000 Head</i>	<i>1,000 Head</i>	<i>Percent</i>	<i>Percent</i>
Sows Farrowing					
Dec-Feb ²	2,835	2,769	2,814	99	102
Mar-May	2,941	2,885	2,857	97	99
Dec-May ²	5,776	5,655	5,671	98	100
Jun-Aug ³	2,883	2,906	2,867	99	99
Sep-Nov ³	2,833	2,841	2,837	100	100
Jun-Nov ³	5,716	5,746	5,703	100	99
Pig Crop					
Dec-Feb ²	24,857	24,399	24,895	100	102
Mar-May	26,001	25,627	25,520	98	100
Dec-May ²	50,858	50,027	50,414	99	101
Jun-Aug	25,725	25,869			
Sep-Nov	25,094	25,359			
Jun-Nov	50,820	51,227			
	<i>Number</i>	<i>Number</i>	<i>Number</i>	<i>Percent</i>	<i>Percent</i>
Pigs per Litter					
Dec-Feb ²	8.77	8.81	8.85	101	100
Mar-May	8.84	8.88	8.93	101	101
Dec-May ²	8.81	8.85	8.89	101	100
Jun-Aug	8.92	8.90			
Sep-Nov	8.86	8.93			
Jun-Nov	8.89	8.91			

¹ May not add due to rounding.

² December preceding year.

³ Intentions for 2004.

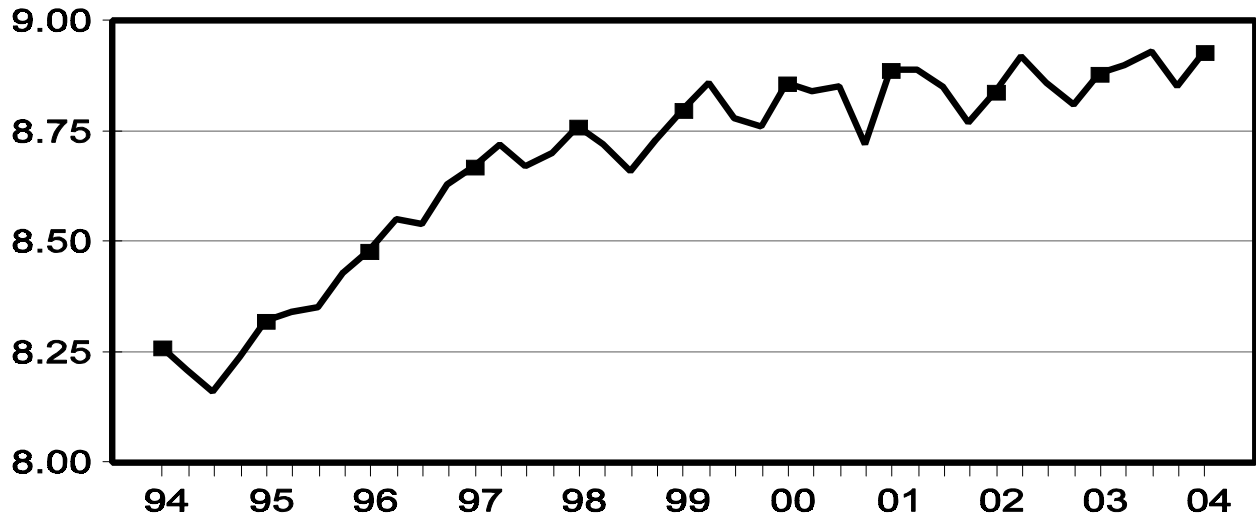
Pigs per Litter: By Size of Operation, United States, 2003-2004

Pig Crop	Pigs per Litter on Operations Having					
	1-99 Head	100-499 Head	500-999 Head	1,000-1,999 Head	2,000-4,999 Head	5,000+ Head
	<i>Number</i>	<i>Number</i>	<i>Number</i>	<i>Number</i>	<i>Number</i>	<i>Number</i>
2003						
Dec-Feb ¹	7.60	8.00	8.20	8.70	8.80	8.90
Mar-May	7.60	8.00	8.40	8.70	8.70	9.00
Jun-Aug	7.60	8.00	8.40	8.60	8.70	9.00
Sep-Nov	7.40	7.90	8.30	8.60	8.70	9.10
2004						
Dec-Feb ¹	7.60	7.90	8.20	8.60	8.70	9.00
Mar-May	7.70	7.90	8.30	8.70	8.90	9.00
Jun-Aug						
Sep-Nov						

¹ December preceding year.

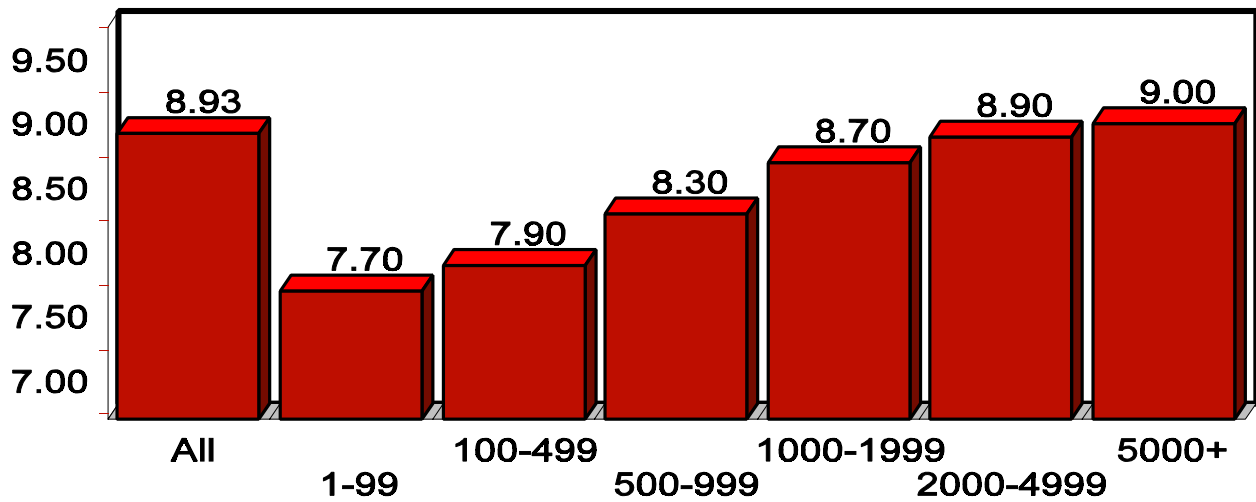
U.S. Quarterly Litter Rate March - May

Number Head



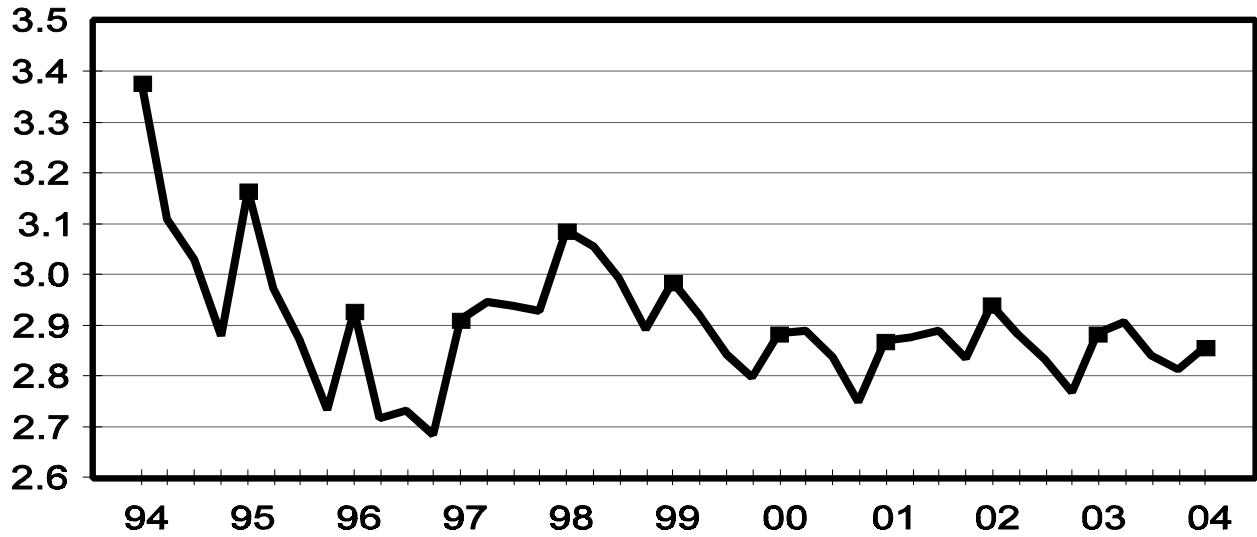
U.S. Pigs per Litter By Size of Operation, Mar-May 2004

Number Head



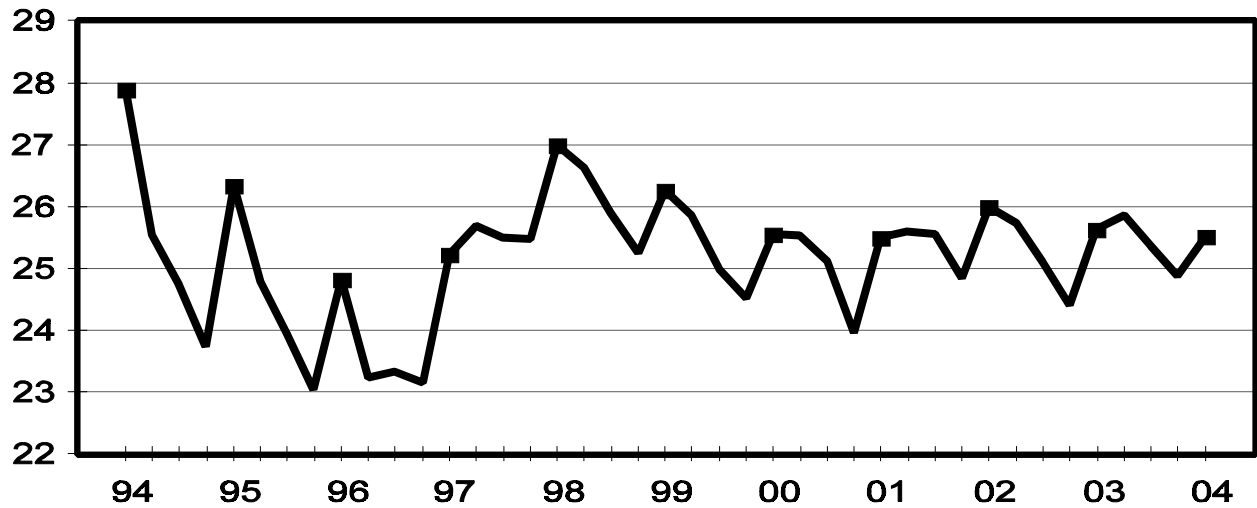
U.S. Quarterly Sows Farrowed March-May

Million Head



U.S. Quarterly Pig Crop March - May

Million Head



**Hogs and Pigs: Breeding, Market, and Total Inventory
by State and United States, March 1, 2003-2004 ¹**

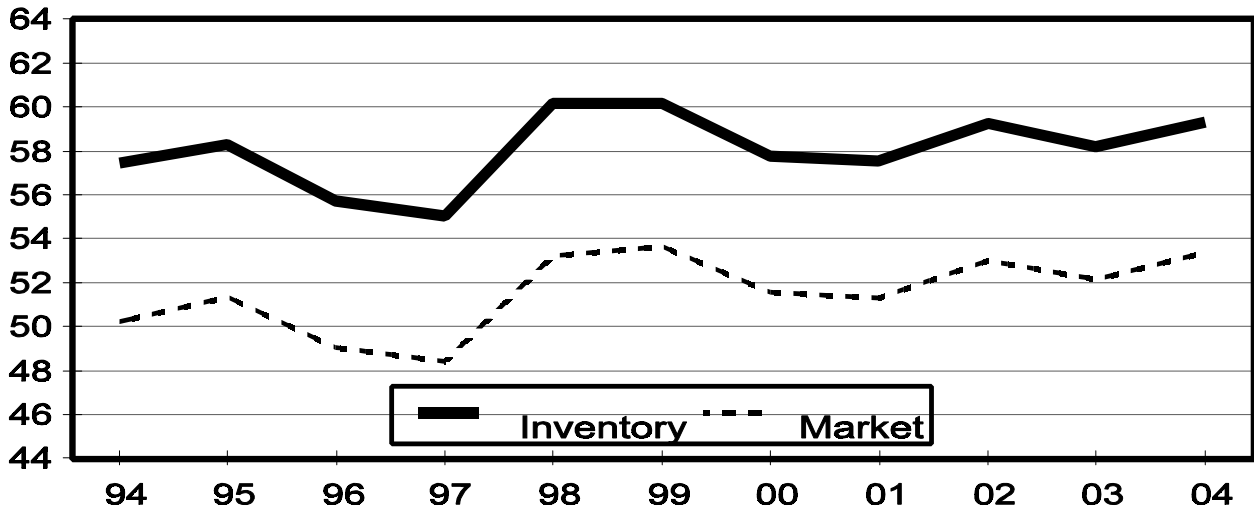
State	Breeding			Market			Total		
	2003	2004		2003	2004		2003	2004	
		Number	as % of 2003		Number	as % of 2003		Number	as % of 2003
	<i>1,000 Head</i>	<i>1,000 Head</i>	<i>Percent</i>	<i>1,000 Head</i>	<i>1,000 Head</i>	<i>Percent</i>	<i>1,000 Head</i>	<i>1,000 Head</i>	<i>Percent</i>
AR	75	85	113	200	230	115	275	315	115
CO	130	115	88	590	525	89	720	640	89
IL	420	410	98	3,530	3,440	97	3,950	3,850	97
IN	320	300	94	2,780	2,800	101	3,100	3,100	100
IA	1,060	1,040	98	13,940	14,460	104	15,000	15,500	103
KS	160	170	106	1,310	1,550	118	1,470	1,720	117
MI	100	100	100	770	830	108	870	930	107
MN	600	600	100	5,500	5,800	105	6,100	6,400	105
MO	360	330	92	2,590	2,570	99	2,950	2,900	98
NE	380	360	95	2,520	2,490	99	2,900	2,850	98
NC	1,000	1,000	100	8,600	8,900	103	9,600	9,900	103
OH	160	160	100	1,280	1,360	106	1,440	1,520	106
OK	340	350	103	2,030	2,000	99	2,370	2,350	99
PA	125	120	96	945	910	96	1,070	1,030	96
SD	145	145	100	1,155	1,095	95	1,300	1,240	95
TX	105	110	105	785	810	103	890	920	103
WI	60	55	92	440	395	90	500	450	90
Oth Sts ²	477	467	98	3,201	3,232	101	3,678	3,700	101
US	6,017	5,917	98	52,166	53,397	102	58,183	59,315	102

¹ May not add due to rounding.

² Individual State estimates not available for the 33 other States.

March 1 Hog Inventory & Market Hogs United States

Million Head



**Market Hogs and Pigs: Inventory Number by Weight Group,
State, and United States, March 1, 2003-2004 ¹**

State	Under 60 Lbs.		60-119 Lbs.		120-179 Lbs.		180 Lbs. and Over	
	2003	2004	2003	2004	2003	2004	2003	2004
	<i>1,000 Head</i>	<i>1,000 Head</i>	<i>1,000 Head</i>	<i>1,000 Head</i>	<i>1,000 Head</i>	<i>1,000 Head</i>	<i>1,000 Head</i>	<i>1,000 Head</i>
AR	130	135	20	30	20	30	30	35
CO	305	290	85	60	85	65	115	110
IL	1,270	1,260	860	820	780	750	620	610
IN	1,040	1,010	660	660	560	620	520	510
IA	4,290	4,510	3,810	4,000	3,140	3,250	2,700	2,700
KS	430	530	250	285	250	310	380	425
MI	270	300	190	205	165	175	145	150
MN	2,110	2,200	1,320	1,420	1,190	1,220	880	960
MO	1,230	1,270	570	510	480	470	310	320
NE	1,000	980	640	640	485	470	395	400
NC	3,350	3,500	2,000	2,200	1,800	1,800	1,450	1,400
OH	525	550	305	320	280	290	170	200
OK	880	940	350	310	290	250	510	500
PA	340	300	245	240	175	210	185	160
SD	380	375	295	245	270	265	210	210
TX	220	265	210	180	155	195	200	170
WI	165	155	100	90	90	80	85	70
Oth Sts ²	1,151	1,114	739	775	700	696	611	649
US	19,086	19,684	12,649	12,990	10,915	11,146	9,516	9,579

¹ Weight groups may not add to Market due to rounding.

² Individual State estimates not available for the 33 other States.

**Hogs and Pigs: Breeding, Market, and Total Inventory
by State and United States, June 1, 2003-2004¹**

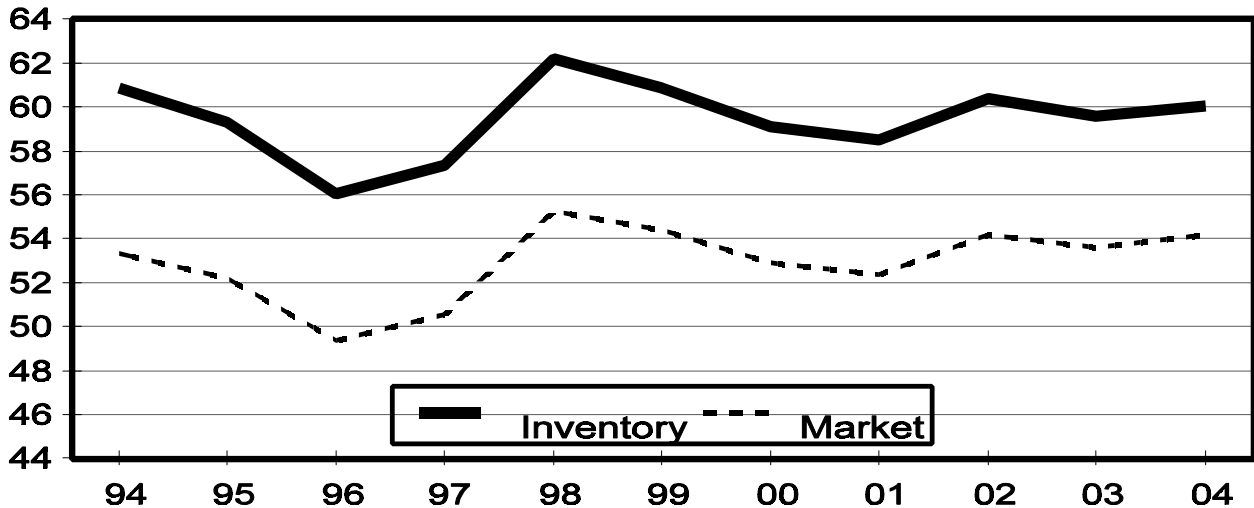
State	Breeding			Market			Total		
	2003	2004		2003	2004		2003	2004	
		Number	as % of 2003		Number	as % of 2003		Number	as % of 2003
	<i>1,000 Head</i>	<i>1,000 Head</i>	<i>Percent</i>	<i>1,000 Head</i>	<i>1,000 Head</i>	<i>Percent</i>	<i>1,000 Head</i>	<i>1,000 Head</i>	<i>Percent</i>
AR	75	85	113	195	250	128	270	335	124
CO	125	125	100	605	585	97	730	710	97
IL	420	420	100	3,630	3,530	97	4,050	3,950	98
IN	310	290	94	2,740	2,810	103	3,050	3,100	102
IA	1,070	1,060	99	14,730	14,840	101	15,800	15,900	101
KS	165	165	100	1,345	1,565	116	1,510	1,730	115
MI	100	95	95	830	815	98	930	910	98
MN	600	600	100	5,700	5,900	104	6,300	6,500	103
MO	340	320	94	2,560	2,580	101	2,900	2,900	100
NE	380	360	95	2,570	2,490	97	2,950	2,850	97
NC	1,000	1,000	100	8,800	9,100	103	9,800	10,100	103
OH	160	155	97	1,300	1,295	100	1,460	1,450	99
OK	360	350	97	1,940	2,100	108	2,300	2,450	107
PA	120	110	92	940	870	93	1,060	980	92
SD	145	145	100	1,185	1,085	92	1,330	1,230	92
TX	110	110	100	800	760	95	910	870	96
WI	60	50	83	420	390	93	480	440	92
Oth Sts ²	466	473	102	3,306	3,204	97	3,772	3,678	97
US	6,006	5,913	98	53,596	54,169	101	59,602	60,083	101

¹ May not add due to rounding.

² Individual State estimates not available for the 33 other States.

June 1 Hog Inventory & Market Hogs United States

Million Head



**Market Hogs and Pigs: Inventory Number by Weight Group,
State, and United States, June 1, 2003-2004 ¹**

State	Under 60 Lbs.		60-119 Lbs.		120-179 Lbs.		180 Lbs. and Over	
	2003	2004	2003	2004	2003	2004	2003	2004
	<i>1,000 Head</i>	<i>1,000 Head</i>	<i>1,000 Head</i>	<i>1,000 Head</i>	<i>1,000 Head</i>	<i>1,000 Head</i>	<i>1,000 Head</i>	<i>1,000 Head</i>
AR	120	145	25	40	25	30	25	35
CO	315	310	90	95	85	80	115	100
IL	1,330	1,350	890	850	780	750	630	580
IN	990	1,020	650	630	570	600	530	560
IA	4,890	4,540	3,950	4,200	3,190	3,300	2,700	2,800
KS	445	540	285	320	255	275	360	430
MI	310	310	210	190	165	170	145	145
MN	2,300	2,360	1,390	1,420	1,180	1,230	830	890
MO	1,250	1,280	530	520	470	480	310	300
NE	1,020	980	680	660	495	460	375	390
NC	3,750	3,750	2,100	2,150	1,650	1,750	1,300	1,450
OH	535	535	315	310	275	270	175	180
OK	860	980	280	330	280	310	520	480
PA	350	310	220	230	190	180	180	150
SD	380	370	305	290	280	250	220	175
TX	275	255	150	165	135	175	240	165
WI	170	150	90	85	85	80	75	75
Oth Sts ²	1,143	1,123	812	766	718	687	633	630
US	20,433	20,308	12,972	13,251	10,828	11,077	9,363	9,535

¹ Weight groups may not add to Market due to rounding.

² Individual State estimates not available for the 33 other States.

**Hogs and Pigs: Breeding, Market, and Total Inventory
by State and United States, September 1, 2002-2003¹**

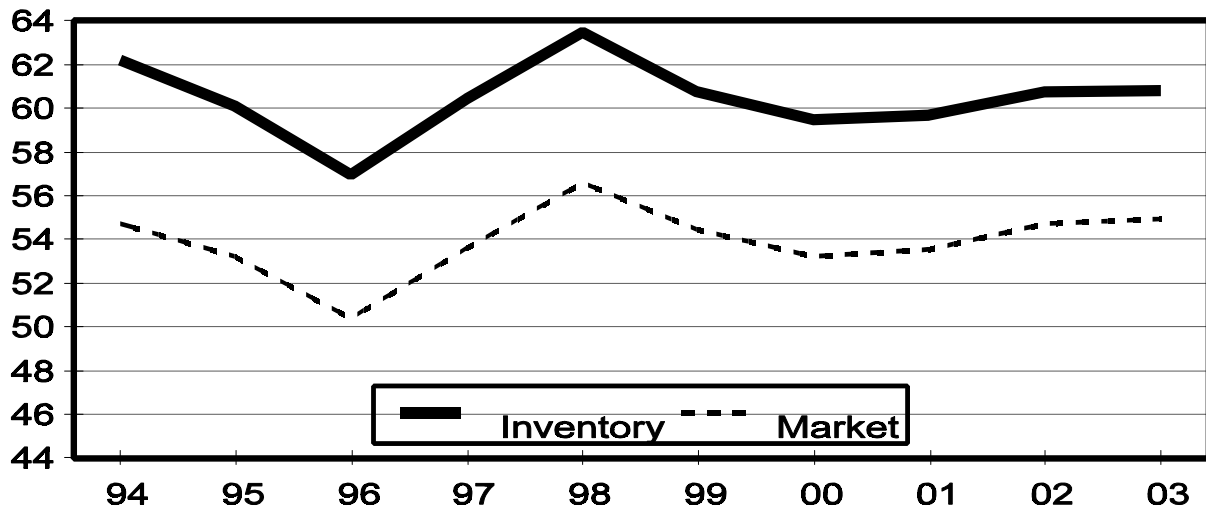
State	Breeding			Market			Total		
	2002	2003		2002	2003		2002	2003	
		Number	as % of 2002		Number	as % of 2002		Number	as % of 2002
	<i>1,000 Head</i>	<i>1,000 Head</i>	<i>Percent</i>	<i>1,000 Head</i>	<i>1,000 Head</i>	<i>Percent</i>	<i>1,000 Head</i>	<i>1,000 Head</i>	<i>Percent</i>
AR	90	80	89	455	200	44	545	280	51
CO	145	110	76	615	630	102	760	740	97
IL	430	420	98	3,820	3,530	92	4,250	3,950	93
IN	330	300	91	2,870	2,750	96	3,200	3,050	95
IA	1,100	1,030	94	14,500	15,070	104	15,600	16,100	103
KS	160	165	103	1,410	1,505	107	1,570	1,670	106
MI	120	100	83	820	820	100	940	920	98
MN	580	600	103	5,620	5,900	105	6,200	6,500	105
MO	350	330	94	2,550	2,570	101	2,900	2,900	100
NE	360	375	104	2,540	2,675	105	2,900	3,050	105
NC	1,000	1,000	100	9,200	9,200	100	10,200	10,200	100
OH	160	155	97	1,340	1,325	99	1,500	1,480	99
OK	330	360	109	2,160	2,070	96	2,490	2,430	98
PA	125	120	96	955	1,010	106	1,080	1,130	105
SD	140	135	96	1,180	1,155	98	1,320	1,290	98
TX	100	95	95	900	825	92	1,000	920	92
WI	55	60	109	425	440	104	480	500	104
Oth Sts ²	476	463	97	3,342	3,256	97	3,818	3,719	97
US	6,051	5,898	97	54,702	54,931	100	60,753	60,829	100

¹ May not add due to rounding.

² Individual State estimates not available for the 33 other States.

September 1 Hog Inventory & Market Hogs United States

Million Head



**Market Hogs and Pigs: Inventory Number by Weight Group,
State, and United States, September 1, 2002-2003 ¹**

State	Under 60 Lbs.		60-119 Lbs.		120-179 Lbs.		180 Lbs. and Over	
	2002	2003	2002	2003	2002	2003	2002	2003
	<i>1,000 Head</i>	<i>1,000 Head</i>	<i>1,000 Head</i>	<i>1,000 Head</i>	<i>1,000 Head</i>	<i>1,000 Head</i>	<i>1,000 Head</i>	<i>1,000 Head</i>
AR	225	110	65	35	75	30	90	25
CO	310	325	95	95	90	90	120	120
IL	1,390	1,310	960	870	790	770	680	580
IN	1,050	1,030	720	690	570	550	530	480
IA	4,490	4,760	4,040	4,100	3,160	3,400	2,810	2,810
KS	485	500	260	350	250	235	415	420
MI	315	300	210	210	160	165	135	145
MN	2,170	2,300	1,450	1,510	1,200	1,260	800	830
MO	1,180	1,220	510	550	470	480	390	320
NE	1,000	1,060	650	700	500	510	390	405
NC	3,600	3,650	2,300	2,350	1,800	1,850	1,500	1,350
OH	540	545	320	345	290	280	190	155
OK	890	950	370	300	350	290	550	530
PA	340	360	250	240	190	200	175	210
SD	400	380	320	310	270	275	190	190
TX	265	290	240	160	195	150	200	225
WI	160	175	100	100	75	85	90	80
Oth Sts ²	1,228	1,093	772	814	678	714	664	635
US	20,038	20,358	13,632	13,729	11,113	11,334	9,919	9,510

¹ Weight groups may not add to Market due to rounding.

² Individual State estimates not available for the 33 other States.

**Hogs and Pigs: Breeding, Market, and Total Inventory
by State and United States, December 1, 2002-2003¹**

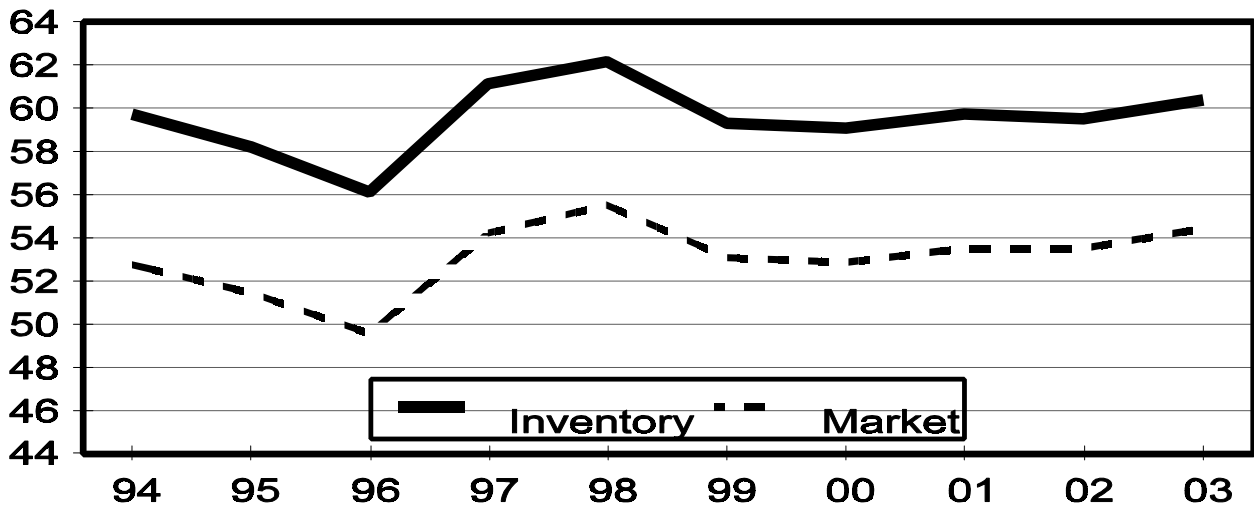
State	Breeding			Market			Total		
	2002	2003		2002	2003		2002	2003	
		Number	as % of 2002		Number	as % of 2002		Number	as % of 2002
	<i>1,000 Head</i>	<i>1,000 Head</i>	<i>Percent</i>	<i>1,000 Head</i>	<i>1,000 Head</i>	<i>Percent</i>	<i>1,000 Head</i>	<i>1,000 Head</i>	<i>Percent</i>
AR	80	85	106	225	225	100	305	310	102
CO	160	110	69	630	580	92	790	690	87
IL	430	410	95	3,720	3,590	97	4,150	4,000	96
IN	330	300	91	2,920	2,800	96	3,250	3,100	95
IA	1,100	1,060	96	14,400	14,840	103	15,500	15,900	103
KS	160	160	100	1,370	1,490	109	1,530	1,650	108
MI	100	110	110	770	840	109	870	950	109
MN	580	600	103	5,520	5,900	107	6,100	6,500	107
MO	360	340	94	2,590	2,610	101	2,950	2,950	100
NE	365	370	101	2,635	2,530	96	3,000	2,900	97
NC	1,000	1,000	100	8,700	9,000	103	9,700	10,000	103
OH	155	160	103	1,285	1,360	106	1,440	1,520	106
OK	330	360	109	1,910	2,020	106	2,240	2,380	106
PA	130	120	92	1,000	990	99	1,130	1,110	98
SD	140	145	104	1,190	1,135	95	1,330	1,280	96
TX	105	105	100	825	825	100	930	930	100
WI	60	55	92	460	425	92	520	480	92
Oth Sts ²	473	475	100	3,346	3,263	98	3,819	3,739	98
US	6,058	5,965	98	53,496	54,423	102	59,554	60,389	101

¹ May not add due to rounding.

² Individual State estimates not available for the 33 other States.

December 1 Hog Inventory & Market Hogs United States

Million Head



**Market Hogs and Pigs: Inventory Number by Weight Group,
State, and United States, December 1, 2002-2003¹**

State	Under 60 Lbs.		60-119 Lbs.		120-179 Lbs.		180 Lbs. and Over	
	2002	2003	2002	2003	2002	2003	2002	2003
	<i>1,000 Head</i>	<i>1,000 Head</i>	<i>1,000 Head</i>	<i>1,000 Head</i>	<i>1,000 Head</i>	<i>1,000 Head</i>	<i>1,000 Head</i>	<i>1,000 Head</i>
AR	115	120	40	30	35	30	35	45
CO	350	305	90	70	80	70	110	135
IL	1,320	1,280	920	860	800	770	680	680
IN	1,040	990	710	670	620	580	550	560
IA	4,350	4,510	3,900	4,130	3,200	3,200	2,950	3,000
KS	440	510	320	285	290	280	320	415
MI	285	300	180	205	155	175	150	160
MN	2,110	2,210	1,350	1,420	1,130	1,250	930	1,020
MO	1,190	1,280	530	530	480	460	390	340
NE	1,040	960	690	650	500	490	405	430
NC	3,450	3,550	2,050	2,200	1,700	1,750	1,500	1,500
OH	525	540	310	330	275	280	175	210
OK	910	920	260	320	160	320	580	460
PA	355	350	250	235	200	195	195	210
SD	370	385	310	250	280	280	230	220
TX	240	245	240	195	180	200	165	185
WI	165	165	110	95	95	85	90	80
Oth Sts ²	1,230	1,124	773	784	695	695	648	662
US	19,485	19,744	13,033	13,259	10,875	11,110	10,103	10,312

¹ Weight groups may not add to Market due to rounding.

² Individual State estimates not available for the 33 other States.

**Farrowings: Number of Sows, Pigs per Litter, and Pig Crop
by State and United States, December-February 2003-2004^{1 2}**

State	Sows Farrowing			Pigs per Litter		Pig Crop ³		
	2003	2004		2003	2004	2003	2004	
		Number	as % of 2003				Number	as % of 2003
	<i>1,000 Head</i>	<i>1,000 Head</i>	<i>Percent</i>	<i>Number</i>	<i>Number</i>	<i>1,000 Head</i>	<i>1,000 Head</i>	<i>Percent</i>
AR	41	38	93	9.70	9.60	398	365	92
CO	75	60	80	8.35	8.00	626	480	77
IL	200	205	103	8.85	8.85	1,770	1,814	102
IN	150	145	97	8.85	8.85	1,328	1,283	97
IA	410	400	98	8.50	8.70	3,485	3,480	100
KS	76	84	111	8.50	8.70	646	731	113
MI	43	45	105	8.80	8.90	378	401	106
MN	265	285	108	8.80	9.05	2,332	2,579	111
MO	170	170	100	8.85	9.00	1,505	1,530	102
NE	180	175	97	8.75	8.90	1,575	1,558	99
NC	530	550	104	9.00	8.95	4,770	4,923	103
OH	73	74	101	8.90	8.80	650	651	100
OK	170	185	109	8.80	8.60	1,496	1,591	106
PA	49	53	108	9.30	8.50	456	451	99
SD	64	70	109	9.05	9.20	579	644	111
TX	43	46	107	8.75	8.40	376	386	103
WI	29	24	83	8.60	8.80	249	211	85
Oth Sts ⁴	201	205	102	8.84	8.86	1,780	1,817	102
US	2,769	2,814	102	8.81	8.85	24,399	24,895	102

¹ May not add due to rounding.

² December preceding year.

³ Number of pigs born December-February that were still on hand March 1 or had been sold.

⁴ Individual State estimates not available for the 33 other States.

**Farrowings: Number of Sows, Pigs per Litter, and Pig Crop
by State and United States, March-May 2003-2004 ¹**

State	Sows Farrowing			Pigs per Litter		Pig Crop ²		
	2003	2004		2003	2004	2003	2004	
		Number	as % of 2003				Number	as % of 2003
	<i>1,000 Head</i>	<i>1,000 Head</i>	<i>Percent</i>	<i>Number</i>	<i>Number</i>	<i>1,000 Head</i>	<i>1,000 Head</i>	<i>Percent</i>
AR	36	41	114	9.70	9.70	349	398	114
CO	67	59	88	8.50	8.00	570	472	83
IL	215	215	100	8.90	8.90	1,914	1,914	100
IN	145	135	93	8.95	8.90	1,298	1,202	93
IA	470	430	91	8.70	8.75	4,089	3,763	92
KS	83	84	101	8.50	8.80	706	739	105
MI	46	44	96	9.00	9.10	414	400	97
MN	280	290	104	8.95	8.95	2,506	2,596	104
MO	170	170	100	8.70	9.00	1,479	1,530	103
NE	185	175	95	8.90	8.90	1,647	1,558	95
NC	540	550	102	9.00	9.10	4,860	5,005	103
OH	73	73	100	9.00	8.90	657	650	99
OK	175	190	109	8.90	8.80	1,558	1,672	107
PA	49	50	102	9.30	8.75	456	438	96
SD	68	70	103	9.10	9.40	619	658	106
TX	49	47	96	9.00	8.60	441	404	92
WI	28	26	93	8.75	8.75	245	228	93
Oth Sts ³	206	208	101	8.82	9.10	1,819	1,893	104
US	2,885	2,857	99	8.88	8.93	25,627	25,520	100

¹ May not add due to rounding.

² Number of pigs born March-May that were still on hand June 1, or had been sold.

³ Individual State estimates not available for the 33 other States.

**Farrowings: Number of Sows, Pigs per Litter, and Pig Crop
by State and United States, June-August 2002-2004 ¹**

State	Sows Farrowing				Pigs per Litter		Pig Crop ²		
	2002	2003	2004 ³		2002	2003	2002	2003	
			Number	as % of 2003				Number	as % of 2002
	<i>1,000 Head</i>	<i>1,000 Head</i>	<i>1,000 Head</i>	<i>Percent</i>	<i>Number</i>	<i>Number</i>	<i>1,000 Head</i>	<i>1,000 Head</i>	<i>Percent</i>
AR	52	37	46	124	9.55	9.60	497	355	71
CO	75	68	58	85	8.35	8.70	626	592	95
IL	210	215	210	98	8.90	8.85	1,869	1,903	102
IN	150	150	135	90	8.70	8.95	1,305	1,343	103
IA	430	450	440	98	8.80	8.70	3,784	3,915	103
KS	82	80	84	105	8.75	8.75	718	700	97
MI	54	47	42	89	9.05	9.00	489	423	87
MN	265	275	290	105	8.85	8.90	2,345	2,448	104
MO	170	170	160	94	9.05	8.95	1,539	1,522	99
NE	175	185	170	92	9.00	8.80	1,575	1,628	103
NC	560	560	560	100	9.10	9.00	5,096	5,040	99
OH	78	76	75	99	8.90	8.90	694	676	97
OK	170	185	185	100	9.05	9.00	1,539	1,665	108
PA	53	51	50	98	9.00	9.40	477	479	100
SD	69	70	70	100	9.05	9.30	624	651	104
TX	50	49	53	108	8.95	8.70	448	426	95
WI	26	29	23	79	8.35	8.60	217	249	115
Oth Sts ⁴	214	209	216	103	8.80	8.88	1,883	1,854	98
US	2,883	2,906	2,867	99	8.92	8.90	25,725	25,869	101

¹ May not add due to rounding.

² Number of pigs born June-August that were still on hand September 1 or had been sold.

³ Intentions.

⁴ Individual State estimates not available for the 33 other States.

**Farrowings: Number of Sows, Pigs per Litter, and Pig Crop
by State and United States, September-November 2002-2004¹**

State	Sows Farrowing				Pigs per Litter		Pig Crop ²		
	2002	2003	2004 ³		2002	2003	2002	2003	
			Number	as % of 2003				Number	as % of 2002
	<i>1,000 Head</i>	<i>1,000 Head</i>	<i>1,000 Head</i>	<i>Percent</i>	<i>Number</i>	<i>Number</i>	<i>1,000 Head</i>	<i>1,000 Head</i>	<i>Percent</i>
AR	44	35	46	131	9.80	9.50	431	333	77
CO	75	60	59	98	8.60	8.40	645	504	78
IL	210	205	210	102	8.85	8.85	1,859	1,814	98
IN	145	145	135	93	8.75	8.85	1,269	1,283	101
IA	440	440	450	102	8.50	8.80	3,740	3,872	104
KS	79	81	85	105	8.70	8.70	687	705	103
MI	42	51	42	82	9.10	8.80	382	449	118
MN	275	280	285	102	8.90	9.00	2,448	2,520	103
MO	170	175	160	91	8.95	9.10	1,522	1,593	105
NE	180	180	170	94	9.05	9.00	1,629	1,620	99
NC	530	540	540	100	9.00	9.10	4,770	4,914	103
OH	73	74	74	100	8.85	8.80	646	651	101
OK	165	185	180	97	9.10	8.70	1,502	1,610	107
PA	53	51	50	98	9.00	9.50	477	485	102
SD	61	70	71	101	9.00	9.10	549	637	116
TX	46	33	46	139	8.85	8.20	407	271	67
WI	28	26	22	85	8.70	8.70	244	226	93
Oth Sts ⁴	217	210	212	101	8.71	8.93	1,887	1,872	99
US	2,833	2,841	2,837	100	8.86	8.93	25,094	25,359	101

¹ May not add due to rounding.

² Number of pigs born September-November that were still on hand December 1, or had been sold.

³ Intentions.

⁴ Individual State estimates not available for the 33 other States.

**Monthly Farrowings: Number of Sows, Pigs per Litter, and Pig Crop,
United States, December-November 2003-2004^{1 2}**

Month	Sows Farrowing		Pigs per Litter		Pig Crop	
	2003	2004	2003	2004	2003	2004
	<i>1,000 Head</i>	<i>1,000 Head</i>	<i>Number</i>	<i>Number</i>	<i>1,000 Head</i>	<i>1,000 Head</i>
Dec ¹	907	925	8.75	8.84	7,940	8,176
Jan	930	951	8.82	8.83	8,202	8,400
Feb	932	938	8.86	8.87	8,257	8,319
Mar	946	953	8.85	8.92	8,372	8,505
Apr	966	953	8.88	8.94	8,581	8,518
May	973	951	8.91	8.93	8,674	8,497
Jun	961		8.91		8,567	
Jul	974		8.90		8,670	
Aug	971		8.89		8,632	
Sep	962		8.91		8,575	
Oct	949		8.93		8,478	
Nov	930		8.93		8,305	
Total	11,401		8.88		101,254	

¹ December preceding year.

² Monthly values may not add to quarterly or annual totals due to rounding.

Reliability of June 1 Hogs and Pigs Estimates

Survey Procedures: A random sample of roughly 11,600 U.S. producers was surveyed to provide data for these estimates. Survey procedures ensured that all hog and pig producers, regardless of size, had a chance to be included in the survey. Large producers were sampled more heavily than small operations. Data were collected from about 9,550 operations, 82 percent of the total sample, during the first-half of June by mail, telephone, and face-to-face personal interviews. Regardless of when operations responded, they were asked to report inventories as of June 1.

Estimation Procedures: These hogs and pigs estimates were prepared by the Agricultural Statistics Board after reviewing recommendations and analysis submitted by each State office. National and State survey data were reviewed for reasonableness with each other and with estimates from past years using a balance sheet. The balance sheet begins with the previous inventory estimate, adds the estimates of births and imports, and subtracts the estimates of slaughter, exports, and deaths. This indicated ending inventory level is compared to the Agricultural Statistics Board estimate for reasonableness.

Revision Policy: Revisions to previous estimates are made to improve quarter to quarter relationships. Estimates for the previous four quarters are subject to revision when current estimates are made. In December, estimates for all quarters of the current and previous year are reviewed. The reviews are primarily based on hog check-off receipts and slaughter. Estimates will also be reviewed after data from the Department of Agriculture five-year Census of Agriculture are available. No revisions will be made after that date.

Reliability: Since all operations raising hogs are not included in the sample, survey estimates are subject to sampling variability. Survey results are also subject to non-sampling errors such as omissions, duplication, and mistakes in reporting, recording, and processing the data. The affects of these errors cannot be measured directly. They are minimized through rigid quality controls in the data collection process and through a careful review of all reported data for consistency and reasonableness.

To assist users in evaluating the reliability of the estimates in this report, the "Root Mean Square Error" is shown for selected items in the following table. The "**Root Mean Square Error**" is a statistical measure based on past performance and is computed using the difference between first and final estimates. The "Root Mean Square Error" for hog inventory estimates over the past 20 quarters is 1.1 percent. This means that chances are 2 out of 3 that the final estimate will not be above or below the current estimate of 60.1 million head by more than 1.1 percent. Chances are 9 out of 10 that the difference will not exceed 1.9 percent.

Reliability of June 1 Hog Estimates ¹

Item	Root Mean Square Error	90% Confidence Level		Difference Between First and Latest Estimates			Quarters	
				Average	Smallest	Largest	First Above Latest	First Below Latest
				<i>1,000 Head</i>	<i>1,000 Head</i>	<i>1,000 Head</i>	<i>Number</i>	<i>Number</i>
All Hogs & Pigs	1.1	1.9	1,142	554	0	1,208	7	12
Pig Crop	1.6	2.7	689	297	0	926	10	10
Expected Farrowings								
Next Quarter	1.9	3.3	95	40	6	158	10	10
Following Quarter	2.1	3.7	105	48	2	146	11	9

¹ Based on quarterly records for the past 20 quarters.

Index

Page

Farrowings: Number of Sows, Pig Crop, and Pigs per Litter, United States	2
Farrowings: Number of Sows, Pigs per Litter, and Pig Crop by State and United States, December-February	13
Farrowings: Number of Sows, Pigs per Litter, and Pig Crop by State and United States, June-August	15
Farrowings: Number of Sows, Pigs per Litter, and Pig Crop by State and United States, March-May	14
Farrowings: Number of Sows, Pigs per Litter, and Pig Crop by State and United States, September-November	16
Hogs and Pigs: Breeding, Market, and Total Inventory by State and United States, December 1	11
Hogs and Pigs: Breeding, Market, and Total Inventory by State and United States, June 1	7
Hogs and Pigs: Breeding, Market, and Total Inventory by State and United States, March 1	5
Hogs and Pigs: Breeding, Market, and Total Inventory by State and United States, September 1	9
Hogs and Pigs: Inventory Number by Class, Weight Group, and Quarter, United States	1
Market Hogs and Pigs: Inventory Number by Weight Group, State, and United States, December 1	12
Market Hogs and Pigs: Inventory Number by Weight Group, State, and United States, June 1	8
Market Hogs and Pigs: Inventory Number by Weight Group, State, and United States, March 1	6
Market Hogs and Pigs: Inventory Number by Weight Group, State, and United States, September 1	10
Monthly Farrowings: Number of Sows, Pigs per Litter, and Pig Crop, United States, December-November	17
Pigs per Litter: By Size of Operation, United States	2
Reliability of Hogs and Pigs Estimates	18

ACCESS TO REPORTS!!

For your convenience, there are several ways to obtain NASS reports, data products, and services:

INTERNET ACCESS

All NASS reports are available free of charge on the worldwide Internet. For access, connect to the Internet and go to the NASS Home Page at: www.usda.gov/nass/. Select "Today's Reports" or Publications and then Reports Calendar or Publications and then Search, by Title or Subject.

E-MAIL SUBSCRIPTION

All NASS reports are available by subscription free of charge direct to your e-mail address. Starting with the NASS Home Page at www.usda.gov/nass/, click on **Publications**, then click on the **Subscribe by E-mail** button which takes you to the page describing e-mail delivery of reports. Finally, click on **Go to the Subscription Page** and follow the instructions.

PRINTED REPORTS OR DATA PRODUCTS

CALL OUR TOLL-FREE ORDER DESK: 800-999-6779 (U.S. and Canada)
Other areas, please call 703-605-6220 FAX: 703-605-6900
(Visa, MasterCard, check, or money order acceptable for payment.)

ASSISTANCE

For **assistance** with general agricultural statistics or further information about NASS or its products or services, contact the **Agricultural Statistics Hotline** at **800-727-9540**, 7:30 a.m. to 4:00 p.m. ET, or e-mail: nass@nass.usda.gov.

The United States Department of Agriculture (USDA) prohibits discrimination in all its programs on the basis of race, color, national origin, gender, religion, age, disability, political beliefs, sexual orientation, and marital or family status. (Not all prohibited bases apply to all programs.) Persons with disabilities who require alternative means for communication of program information (braille, large print, audiotape, etc.) should contact the USDA's TARGET Center at 202-720-2600 (voice and TDD).

To file a complaint of discrimination, write USDA, Director, Office of Civil Rights, Room 326-W, Whitten Building, 1400 Independence Avenue, SW, Washington, D.C., 20250-9410, or call 202-720-5964 (voice or TDD). USDA is an equal opportunity provider and employer.