

Released March 24, 2005, by the National Agricultural Statistics Service (NASS), Agricultural Statistics Board, U.S. Department of Agriculture. For information on *Quarterly Hogs and Pigs* call Dan Lofthus at 202-720-3106, office hours 7:30 a.m. to 4:00 p.m. ET.

U.S. Hog Inventory Up 1 Percent

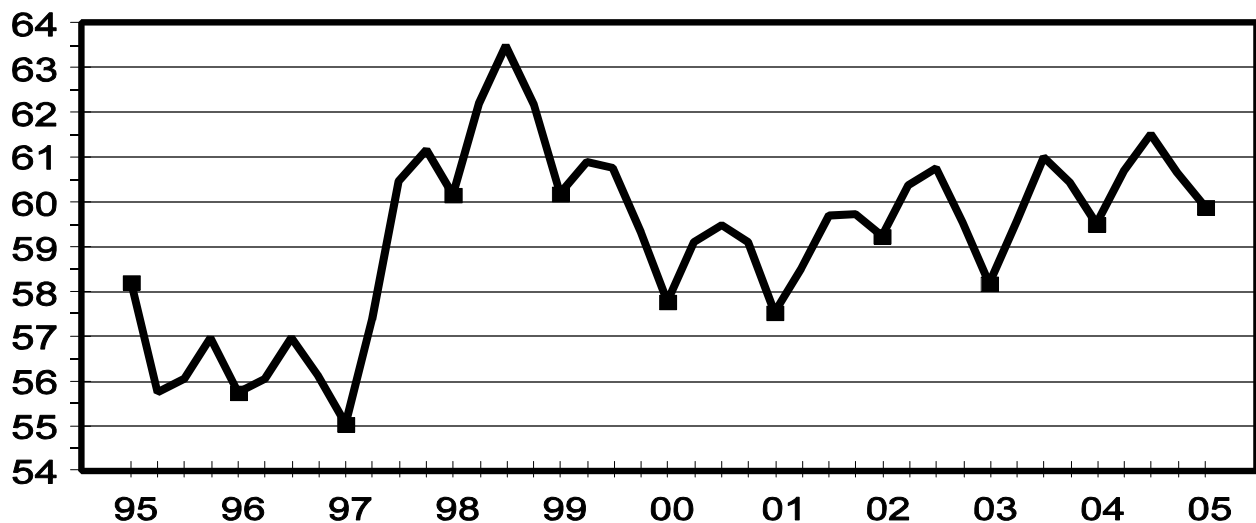
U.S. inventory of all hogs and pigs on March 1, 2005 was 59.9 million head. This was up 1 percent from March 1, 2004, but down 1 percent from December 1, 2004.

Breeding inventory, at 5.94 million head, was down slightly from both March 1, 2004 and last quarter. **Market hog inventory**, at 54.0 million head, was up 1 percent from last year, but down 1 percent from last quarter.

The December 2004 - February 2005 U.S. pig crop, at 25.5 million head, was up 2 percent from 2004 and up 4 percent from 2003. Sows farrowing during this period totaled 2.85 million head, up 1 percent from last year. The sows farrowed during this quarter represented 48 percent of the breeding herd. The average pigs saved per litter was 8.94 for the December 2004 - February 2005 period, compared to 8.85 last year. Pigs saved per litter by size of operation ranged from 7.50 for operations with 1-99 hogs to 9.00 for operations with more than 5,000 hogs and pigs.

U.S. Quarterly Hogs and Pigs Inventory March 1

Million Head



U.S. hog producers intend to have 2.87 million sows farrowed during the March-May 2005 quarter, unchanged from the actual farrowings during the same period in 2004, but 1 percent below 2003. Intended farrowings for June-August 2005, at 2.88 million sows, are down 1 percent from the same period in both 2004 and 2003.

The total number of hogs under contract, owned by operations with over 5,000 head, but raised by contractees, accounted for 39 percent of the total U.S. hog inventory, up from 37 percent last year.

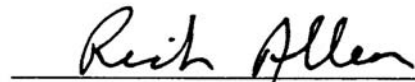
Revisions

All inventory and pig crop estimates for March 2004 through December 2004 were reviewed using final pig crop, official slaughter, death loss, and updated import and export data. Based on the findings of this review, small revisions of less than one-half of one percent were made to the September 1, 2004 total inventory and the December 1, 2004 total inventory. An adjustment slightly larger than one-half of one percent was made to the June-August 2004 pig crop.

This report was approved on March 24, 2005.



Secretary of
Agriculture
Mike Johanns



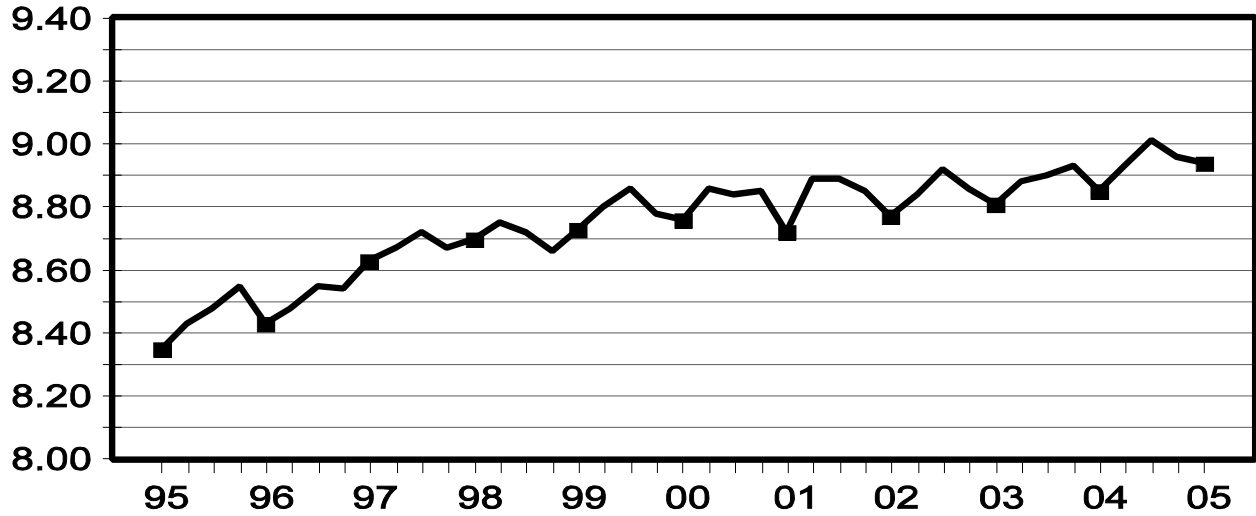
Agricultural Statistics Board
Chairperson
Rich Allen

Contents

	Page
Quarterly U.S. Inventory by Class and Weight Group, 2003-2005	1
Quarterly U.S. Sows Farrowed, Pig Crop, and Pigs per Litter, 2003-2005	2
Hogs and Pigs: Inventory by State and U.S., 2003-2005	
March 1	4
June 1	6
September 1	8
December 1	10
Farrowings: Number of Sows, Pigs per Litter, Pig Crop by State and U.S., 2003-2005	
December-February	12
March-May	13
June-August	14
September-November	15
Monthly U.S. Farrowings, December-November 2004-2005	12
Reliability Statement	17
Index	19

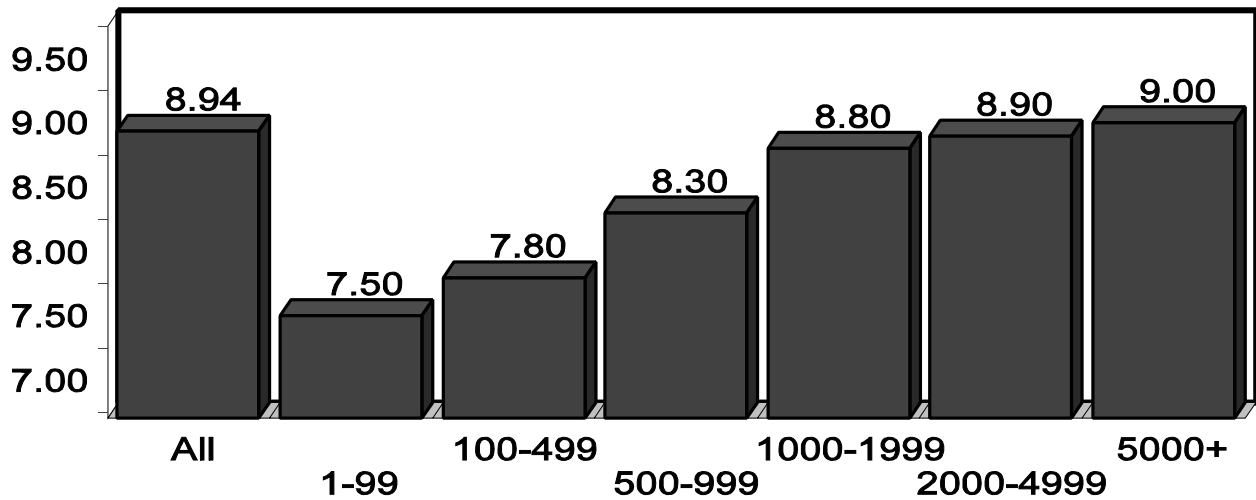
U.S. Quarterly Litter Rate December-February

Number Head



U.S. Pigs per Litter By Size of Operation, Dec. 2004 - Feb. 2005

Number Head



**Hogs and Pigs: Inventory Number by Class, Weight Group,
and Quarter, United States, 2003-2005 ¹**

Item	2003	2004	2005	2005 as % of	
				2003	2004
	<i>1,000 Head</i>	<i>1,000 Head</i>	<i>1,000 Head</i>	<i>Percent</i>	<i>Percent</i>
March 1 Inventory					
All Hogs and Pigs	58,183	59,520	59,899	103	101
Kept for Breeding	6,027	5,961	5,941	99	100
Market	52,156	53,558	53,957	103	101
Market Hogs and Pigs by Weight Groups					
Under 60 Pounds	19,086	19,823	19,817	104	100
60-119 Pounds	12,639	12,954	13,087	104	101
120-179 Pounds	10,915	11,205	11,430	105	102
180 Pounds and Over	9,516	9,578	9,624	101	100
June 1 Inventory					
All Hogs and Pigs	59,602	60,698			
Kept for Breeding	6,026	5,937			
Market	53,576	54,760			
Market Hogs and Pigs by Weight Groups					
Under 60 Pounds	20,433	20,292			
60-119 Pounds	12,952	13,500			
120-179 Pounds	10,828	11,256			
180 Pounds and Over	9,363	9,714			
September 1 Inventory					
All Hogs and Pigs	61,009	61,519			
Kept for Breeding	5,938	5,962			
Market	55,071	55,556			
Market Hogs and Pigs by Weight Groups					
Under 60 Pounds	20,438	20,729			
60-119 Pounds	13,739	13,613			
120-179 Pounds	11,384	11,235			
180 Pounds and Over	9,510	9,981			
December 1 Inventory					
All Hogs and Pigs	60,444	60,645			
Kept for Breeding	6,009	5,969			
Market	54,434	54,675			
Market Hogs and Pigs by Weight Groups					
Under 60 Pounds	19,778	19,650			
60-119 Pounds	13,238	13,439			
120-179 Pounds	11,109	11,186			
180 Pounds and Over	10,311	10,401			

¹ May not add due to rounding.

**Farrowings: Number of Sows, Pig Crop, and Pigs per Litter,
United States, 2003-2005 ¹**

Item	2003	2004	2005	2005 as % of	
				2003	2004
	<i>1,000 Head</i>	<i>1,000 Head</i>	<i>1,000 Head</i>	<i>Percent</i>	<i>Percent</i>
Sows Farrowing					
Dec-Feb ²	2,769	2,836	2,851	103	101
Mar-May ³	2,886	2,870	2,870	99	100
Dec-May ^{2 4}	5,655	5,706	5,721	101	100
Jun-Aug ³	2,918	2,905	2,880	99	99
Sep-Nov	2,856	2,852			
Jun-Nov	5,773	5,757			
Pig Crop					
Dec-Feb ²	24,400	25,105	25,489	104	102
Mar-May	25,629	25,633			
Dec-May ²	50,029	50,737			
Jun-Aug	25,974	26,162			
Sep-Nov	25,488	25,558			
Jun-Nov	51,462	51,720			
	<i>Number</i>	<i>Number</i>	<i>Number</i>	<i>Percent</i>	<i>Percent</i>
Pigs per Litter					
Dec-Feb ²	8.81	8.85	8.94	101	101
Mar-May	8.88	8.93			
Dec-May ²	8.85	8.89			
Jun-Aug	8.90	9.01			
Sep-Nov	8.93	8.96			
Jun-Nov	8.91	8.98			

¹ May not add due to rounding.

² December preceding year.

³ Intentions for 2005.

⁴ Actual farrowings for December 2004-February 2005 plus intentions for March-May 2005.

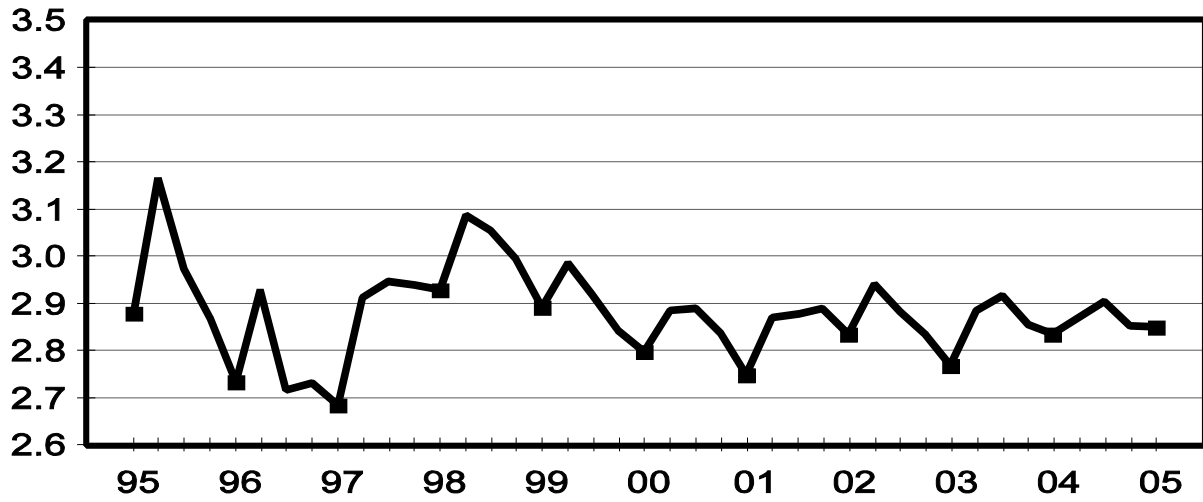
Pigs per Litter: By Size of Operation, United States, 2004-2005

Pig Crop	Pigs per Litter on Operations Having					
	1-99 Head	100-499 Head	500-999 Head	1,000-1,999 Head	2,000-4,999 Head	5,000+ Head
	<i>Number</i>	<i>Number</i>	<i>Number</i>	<i>Number</i>	<i>Number</i>	<i>Number</i>
2004						
Dec-Feb ¹	7.60	7.90	8.20	8.60	8.70	9.00
Mar-May	7.70	7.90	8.30	8.70	8.90	9.00
Jun-Aug	7.50	7.80	8.30	8.80	8.90	9.10
Sep-Nov	7.50	7.70	8.20	8.80	8.90	9.10
2005						
Dec-Feb ¹	7.50	7.80	8.30	8.80	8.90	9.00
Mar-May						
Jun-Aug						
Sep-Nov						

¹ December preceding year.

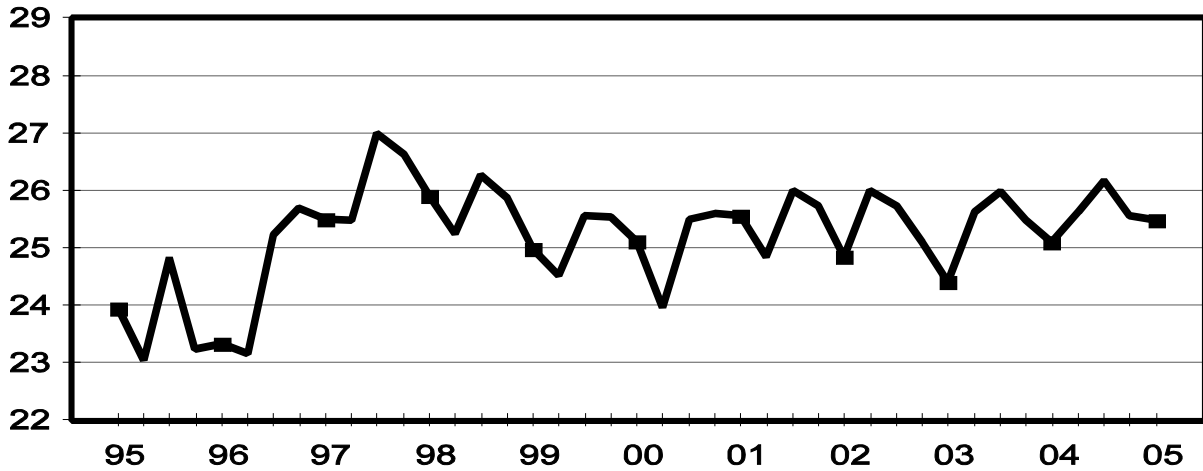
U.S. Quarterly Sows Farrowed December - February

Million Head



U.S. Quarterly Pig Crop December - February

Million Head



**Hogs and Pigs: Breeding, Market, and Total Inventory
by State and United States, March 1, 2004-2005 ¹**

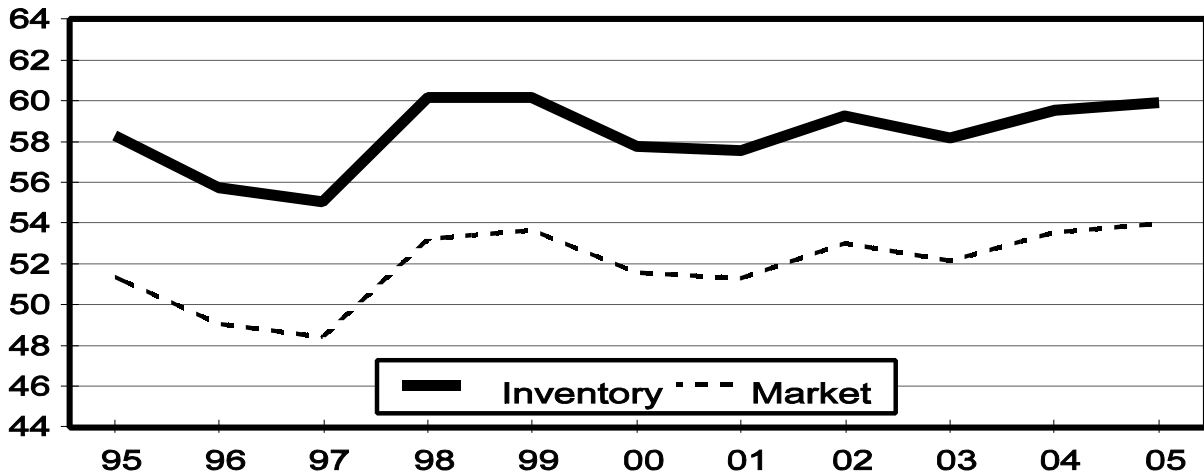
State	Breeding			Market			Total		
	2004	2005		2004	2005		2004	2005	
		Number	as % of 2004		Number	as % of 2004		Number	as % of 2004
	<i>1,000 Head</i>	<i>1,000 Head</i>	<i>Percent</i>	<i>1,000 Head</i>	<i>1,000 Head</i>	<i>Percent</i>	<i>1,000 Head</i>	<i>1,000 Head</i>	<i>Percent</i>
AR	85	85	100	230	245	107	315	330	105
CO	140	140	100	550	670	122	690	810	117
IL	410	430	105	3,440	3,570	104	3,850	4,000	104
IN	300	290	97	2,850	2,710	95	3,150	3,000	95
IA	1,040	1,080	104	14,460	15,120	105	15,500	16,200	105
KS	170	155	91	1,550	1,545	100	1,720	1,700	99
MI	100	100	100	830	820	99	930	920	99
MN	600	590	98	5,900	5,710	97	6,500	6,300	97
MO	330	330	100	2,570	2,520	98	2,900	2,850	98
NE	360	355	99	2,490	2,395	96	2,850	2,750	96
NC	1,020	1,010	99	8,880	8,690	98	9,900	9,700	98
OH	160	160	100	1,360	1,360	100	1,520	1,520	100
OK	350	360	103	2,000	2,060	103	2,350	2,420	103
PA	120	105	88	910	995	109	1,030	1,100	107
SD	145	145	100	1,105	1,215	110	1,250	1,360	109
TX	110	95	86	810	825	102	920	920	100
WI	55	50	91	395	390	99	450	440	98
Oth Sts ²	466	461	99	3,228	3,117	97	3,695	3,579	97
US	5,961	5,941	100	53,558	53,957	101	59,520	59,899	101

¹ May not add due to rounding.

² Individual State estimates not available for the 33 other States.

March 1 Hog Inventory & Market Hogs United States

Million Head



**Market Hogs and Pigs: Inventory Number by Weight Group,
State, and United States, March 1, 2004-2005 ¹**

State	Under 60 Lbs.		60-119 Lbs.		120-179 Lbs.		180 Lbs. and Over	
	2004	2005	2004	2005	2004	2005	2004	2005
	<i>1,000 Head</i>	<i>1,000 Head</i>	<i>1,000 Head</i>	<i>1,000 Head</i>	<i>1,000 Head</i>	<i>1,000 Head</i>	<i>1,000 Head</i>	<i>1,000 Head</i>
AR	135	145	30	35	30	30	35	35
CO	315	365	60	115	65	85	110	105
IL	1,260	1,360	820	830	750	770	610	610
IN	1,060	1,000	660	650	620	570	510	490
IA	4,510	4,430	4,000	4,230	3,250	3,490	2,700	2,970
KS	530	550	285	260	310	285	425	450
MI	300	325	205	190	175	160	150	145
MN	2,250	2,230	1,410	1,370	1,280	1,270	960	840
MO	1,270	1,190	510	520	470	480	320	330
NE	980	970	640	600	470	470	400	355
NC	3,500	3,410	2,180	2,030	1,800	1,850	1,400	1,400
OH	555	570	315	300	290	310	200	180
OK	940	980	310	350	250	260	500	470
PA	300	290	240	290	210	230	160	185
SD	385	430	245	295	265	270	210	220
TX	265	295	180	200	195	160	170	170
WI	155	145	90	95	80	85	70	65
Oth Sts ²	1,113	1,132	774	727	695	655	648	604
US	19,823	19,817	12,954	13,087	11,205	11,430	9,578	9,624

¹ Weight groups may not add to Market due to rounding.

² Individual State estimates not available for the 33 other States.

**Hogs and Pigs: Breeding, Market, and Total Inventory
by State and United States, June 1, 2003-2004 ¹**

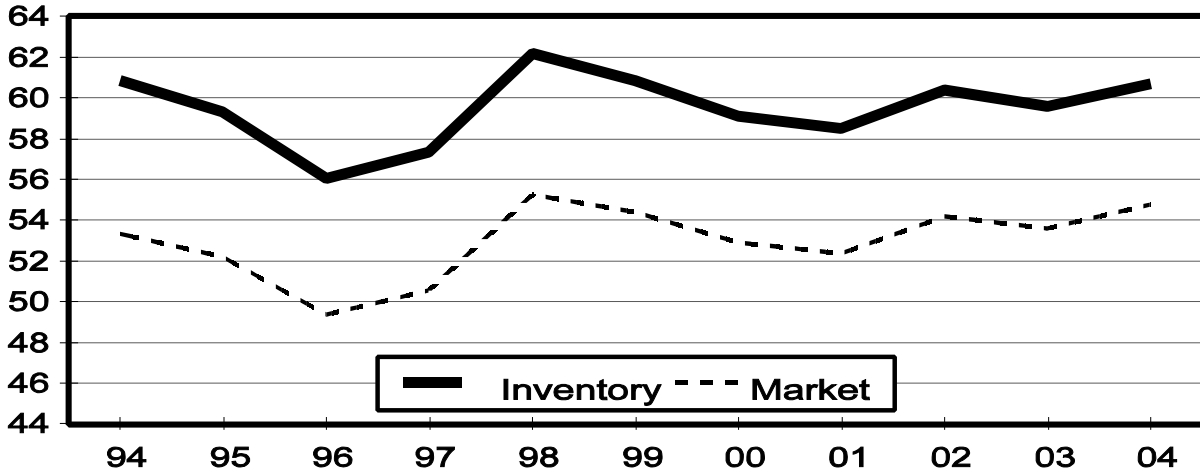
State	Breeding			Market			Total		
	2003	2004		2003	2004		2003	2004	
		Number	as % of 2003		Number	as % of 2003		Number	as % of 2003
	<i>1,000 Head</i>	<i>1,000 Head</i>	<i>Percent</i>	<i>1,000 Head</i>	<i>1,000 Head</i>	<i>Percent</i>	<i>1,000 Head</i>	<i>1,000 Head</i>	<i>Percent</i>
AR	75	85	113	195	250	128	270	335	124
CO	125	140	112	605	610	101	730	750	103
IL	420	420	100	3,630	3,530	97	4,050	3,950	98
IN	310	290	94	2,740	2,860	104	3,050	3,150	103
IA	1,070	1,060	99	14,730	15,040	102	15,800	16,100	102
KS	165	165	100	1,345	1,565	116	1,510	1,730	115
MI	100	95	95	830	815	98	930	910	98
MN	600	600	100	5,700	6,000	105	6,300	6,600	105
MO	340	320	94	2,560	2,630	103	2,900	2,950	102
NE	380	360	95	2,570	2,490	97	2,950	2,850	97
NC	1,020	1,010	99	8,780	9,190	105	9,800	10,200	104
OH	160	155	97	1,300	1,315	101	1,460	1,470	101
OK	360	350	97	1,940	2,100	108	2,300	2,450	107
PA	120	110	92	940	900	96	1,060	1,010	95
SD	145	145	100	1,185	1,085	92	1,330	1,230	92
TX	110	110	100	800	780	98	910	890	98
WI	60	50	83	420	390	93	480	440	92
Oth Sts ²	466	472	101	3,306	3,210	97	3,772	3,683	98
US	6,026	5,937	99	53,576	54,760	102	59,602	60,698	102

¹ May not add due to rounding.

² Individual State estimates not available for the 33 other States.

June 1 Hog Inventory & Market Hogs United States

Million Head



**Market Hogs and Pigs: Inventory Number by Weight Group,
State, and United States, June 1, 2003-2004 ¹**

State	Under 60 Lbs.		60-119 Lbs.		120-179 Lbs.		180 Lbs. and Over	
	2003	2004	2003	2004	2003	2004	2003	2004
	<i>1,000 Head</i>	<i>1,000 Head</i>	<i>1,000 Head</i>	<i>1,000 Head</i>	<i>1,000 Head</i>	<i>1,000 Head</i>	<i>1,000 Head</i>	<i>1,000 Head</i>
AR	120	145	25	40	25	30	25	35
CO	315	335	90	95	85	80	115	100
IL	1,330	1,330	890	870	780	750	630	580
IN	990	1,040	650	660	570	600	530	560
IA	4,890	4,540	3,950	4,300	3,190	3,350	2,700	2,850
KS	445	530	285	330	255	275	360	430
MI	310	300	210	200	165	170	145	145
MN	2,300	2,380	1,390	1,420	1,180	1,260	830	940
MO	1,250	1,300	530	550	470	480	310	300
NE	1,020	980	680	660	495	460	375	390
NC	3,750	3,690	2,080	2,200	1,650	1,800	1,300	1,500
OH	535	535	315	310	275	290	175	180
OK	860	980	280	330	280	310	520	480
PA	350	310	220	230	190	190	180	170
SD	380	370	305	290	280	250	220	175
TX	275	255	150	165	135	185	240	175
WI	170	150	90	85	85	80	75	75
Oth Sts ²	1,143	1,122	812	765	718	696	633	629
US	20,433	20,292	12,952	13,500	10,828	11,256	9,363	9,714

¹ Weight groups may not add to Market due to rounding.

² Individual State estimates not available for the 33 other States.

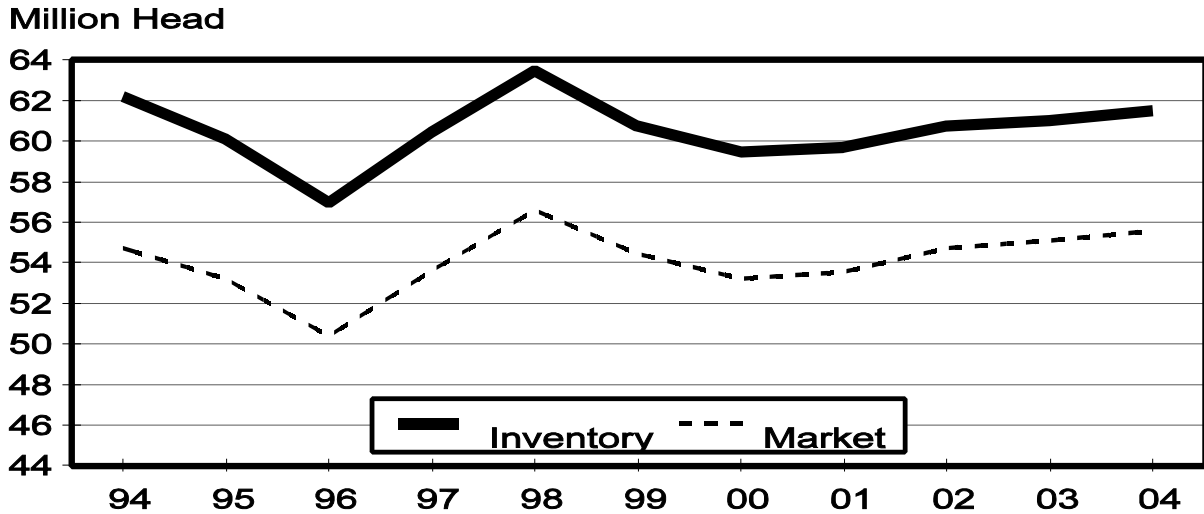
**Hogs and Pigs: Breeding, Market, and Total Inventory
by State and United States, September 1, 2003-2004¹**

State	Breeding			Market			Total		
	2003	2004		2003	2004		2003	2004	
		Number	as % of 2003		Number	as % of 2003		Number	as % of 2003
	<i>1,000 Head</i>	<i>1,000 Head</i>	<i>Percent</i>	<i>1,000 Head</i>	<i>1,000 Head</i>	<i>Percent</i>	<i>1,000 Head</i>	<i>1,000 Head</i>	<i>Percent</i>
AR	80	80	100	200	240	120	280	320	114
CO	130	140	108	640	580	91	770	720	94
IL	420	410	98	3,530	3,590	102	3,950	4,000	101
IN	300	300	100	2,800	2,950	105	3,100	3,250	105
IA	1,030	1,060	103	15,170	15,340	101	16,200	16,400	101
KS	165	160	97	1,505	1,630	108	1,670	1,790	107
MI	100	100	100	820	840	102	920	940	102
MN	600	590	98	5,900	6,010	102	6,500	6,600	102
MO	330	330	100	2,570	2,570	100	2,900	2,900	100
NE	375	360	96	2,675	2,490	93	3,050	2,850	93
NC	1,020	1,030	101	9,180	9,270	101	10,200	10,300	101
OH	155	160	103	1,325	1,350	102	1,480	1,510	102
OK	360	360	100	2,070	2,100	101	2,430	2,460	101
PA	120	105	88	1,010	955	95	1,130	1,060	94
SD	135	140	104	1,155	1,080	94	1,290	1,220	95
TX	95	110	116	825	920	112	920	1,030	112
WI	60	50	83	440	390	89	500	440	88
Oth Sts ²	463	477	103	3,256	3,251	100	3,719	3,729	100
US	5,938	5,962	100	55,071	55,556	101	61,009	61,519	101

¹ May not add due to rounding.

² Individual State estimates not available for the 33 other States.

September 1 Hog Inventory & Market Hogs United States



**Market Hogs and Pigs: Inventory Number by Weight Group,
State, and United States, September 1, 2003-2004 ¹**

State	Under 60 Lbs.		60-119 Lbs.		120-179 Lbs.		180 Lbs. and Over	
	2003	2004	2003	2004	2003	2004	2003	2004
	<i>1,000 Head</i>	<i>1,000 Head</i>	<i>1,000 Head</i>	<i>1,000 Head</i>	<i>1,000 Head</i>	<i>1,000 Head</i>	<i>1,000 Head</i>	<i>1,000 Head</i>
AR	110	140	35	35	30	35	25	30
CO	335	320	95	85	90	75	120	100
IL	1,310	1,380	870	840	770	770	580	600
IN	1,060	1,080	690	710	570	600	480	560
IA	4,800	4,740	4,130	4,200	3,430	3,350	2,810	3,050
KS	500	550	350	340	235	285	420	455
MI	300	320	210	200	165	170	145	150
MN	2,300	2,420	1,510	1,440	1,260	1,240	830	910
MO	1,220	1,270	550	500	480	450	320	350
NE	1,060	970	700	660	510	470	405	390
NC	3,650	3,670	2,330	2,350	1,850	1,850	1,350	1,400
OH	545	570	345	330	280	270	155	180
OK	950	1,000	300	370	290	250	530	480
PA	360	290	240	245	200	195	210	225
SD	380	390	310	270	275	240	190	180
TX	290	340	160	185	150	210	225	185
WI	175	150	100	90	85	80	80	70
Oth Sts ²	1,093	1,129	814	763	714	695	635	666
US	20,438	20,729	13,739	13,613	11,384	11,235	9,510	9,981

¹ Weight groups may not add to Market due to rounding.

² Individual State estimates not available for the 33 other States.

**Hogs and Pigs: Breeding, Market, and Total Inventory
by State and United States, December 1, 2003-2004 ¹**

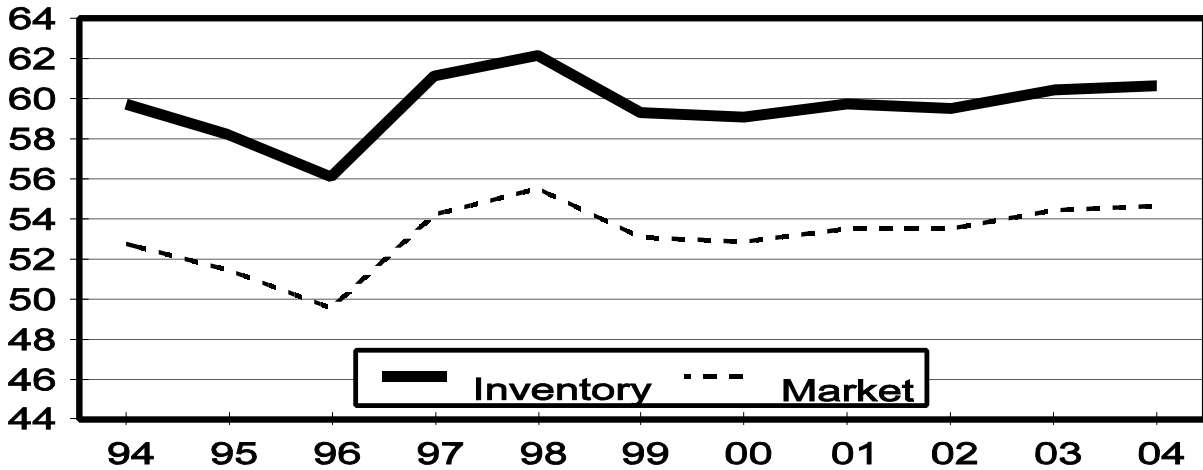
State	Breeding			Market			Total		
	2003	2004		2003	2004		2003	2004	
		Number	as % of 2003		Number	as % of 2003		Number	as % of 2003
	<i>1,000 Head</i>	<i>1,000 Head</i>	<i>Percent</i>	<i>1,000 Head</i>	<i>1,000 Head</i>	<i>Percent</i>	<i>1,000 Head</i>	<i>1,000 Head</i>	<i>Percent</i>
AR	85	85	100	225	245	109	310	330	106
CO	135	140	104	615	660	107	750	800	107
IL	410	420	102	3,590	3,630	101	4,000	4,050	101
IN	300	290	97	2,800	2,860	102	3,100	3,150	102
IA	1,060	1,070	101	14,840	15,130	102	15,900	16,200	102
KS	160	155	97	1,490	1,555	104	1,650	1,710	104
MI	110	110	100	840	830	99	950	940	99
MN	600	600	100	5,900	5,900	100	6,500	6,500	100
MO	340	340	100	2,610	2,560	98	2,950	2,900	98
NE	370	355	96	2,530	2,495	99	2,900	2,850	98
NC	1,020	1,020	100	8,980	8,780	98	10,000	9,800	98
OH	160	155	97	1,360	1,295	95	1,520	1,450	95
OK	360	360	100	2,020	2,030	100	2,380	2,390	100
PA	120	115	96	990	965	97	1,110	1,080	97
SD	145	140	97	1,135	1,190	105	1,280	1,330	104
TX	105	100	95	825	880	107	930	980	105
WI	55	50	91	425	380	89	480	430	90
Oth Sts ²	474	464	98	3,259	3,290	101	3,734	3,755	101
US	6,009	5,969	99	54,434	54,675	100	60,444	60,645	100

¹ May not add due to rounding.

² Individual State estimates not available for the 33 other States.

December 1 Hog Inventory & Market Hogs United States

Million Head



**Market Hogs and Pigs: Inventory Number by Weight Group,
State, and United States, December 1, 2003-2004 ¹**

State	Under 60 Lbs.		60-119 Lbs.		120-179 Lbs.		180 Lbs. and Over	
	2003	2004	2003	2004	2003	2004	2003	2004
	<i>1,000 Head</i>	<i>1,000 Head</i>	<i>1,000 Head</i>	<i>1,000 Head</i>	<i>1,000 Head</i>	<i>1,000 Head</i>	<i>1,000 Head</i>	<i>1,000 Head</i>
AR	120	130	30	40	30	35	45	40
CO	340	355	70	100	70	75	135	130
IL	1,280	1,360	860	830	770	770	680	670
IN	990	960	670	750	580	600	560	550
IA	4,510	4,480	4,130	4,130	3,200	3,340	3,000	3,180
KS	510	460	285	330	280	340	415	425
MI	300	320	205	195	175	160	160	155
MN	2,210	2,250	1,420	1,420	1,250	1,250	1,020	980
MO	1,280	1,200	530	530	460	480	340	350
NE	960	970	650	650	490	470	430	405
NC	3,550	3,420	2,180	2,150	1,750	1,700	1,500	1,510
OH	540	535	330	310	280	270	210	180
OK	920	970	320	340	320	230	460	490
PA	350	280	235	275	195	215	210	195
SD	385	400	250	300	280	260	220	230
TX	245	290	195	200	200	205	185	185
WI	165	135	95	90	85	80	80	75
Oth Sts ²	1,123	1,135	783	799	694	706	661	651
US	19,778	19,650	13,238	13,439	11,109	11,186	10,311	10,401

¹ Weight groups may not add to Market due to rounding.

² Individual State estimates not available for the 33 other States.

**Farrowings: Number of Sows, Pigs per Litter, and Pig Crop
by State and United States, December-February 2004-2005^{1 2}**

State	Sows Farrowing			Pigs per Litter		Pig Crop ³		
	2004	2005		2004	2005	2004	2005	
		Number	as % of 2004				Number	as % of 2004
	<i>1,000 Head</i>	<i>1,000 Head</i>	<i>Percent</i>	<i>Number</i>	<i>Number</i>	<i>1,000 Head</i>	<i>1,000 Head</i>	<i>Percent</i>
AR	38	43	113	9.60	9.55	365	411	113
CO	73	76	104	8.30	8.55	606	650	107
IL	205	210	102	8.85	8.90	1,814	1,869	103
IN	145	135	93	8.85	8.80	1,283	1,188	93
IA	410	445	109	8.70	8.90	3,567	3,961	111
KS	84	81	96	8.70	8.70	731	705	96
MI	45	44	98	8.90	9.00	401	396	99
MN	285	275	96	9.05	9.10	2,579	2,503	97
MO	170	170	100	9.00	9.05	1,530	1,539	101
NE	175	175	100	8.90	9.00	1,558	1,575	101
NC	550	540	98	8.95	8.85	4,923	4,779	97
OH	74	78	105	8.80	9.00	651	702	108
OK	185	190	103	8.60	8.80	1,591	1,672	105
PA	53	48	91	8.50	9.50	451	456	101
SD	70	72	103	9.20	9.40	644	677	105
TX	46	44	96	8.40	9.20	386	405	105
WI	24	25	104	8.80	8.75	211	219	104
Oth Sts ⁴	204	200	98	8.90	8.92	1,814	1,782	98
US	2,836	2,851	101	8.85	8.94	25,105	25,489	102

¹ May not add due to rounding.

² December preceding year.

³ Number of pigs born December-February that were still on hand March 1 or had been sold.

⁴ Individual State estimates not available for the 33 other States.

**Farrowings: Number of Sows, Pigs per Litter, and Pig Crop
by State and United States, March-May 2003-2005 ¹**

State	Sows Farrowing				Pigs per Litter		Pig Crop ²		
	2003	2004	2005 ³		2003	2004	2003	2004	
			Number	as % of 2004				Number	as % of 2003
	<i>1,000 Head</i>	<i>1,000 Head</i>	<i>1,000 Head</i>	<i>Percent</i>	<i>Number</i>	<i>Number</i>	<i>1,000 Head</i>	<i>1,000 Head</i>	<i>Percent</i>
AR	36	41	45	110	9.70	9.70	349	398	114
CO	67	72	78	108	8.50	8.10	570	583	102
IL	215	215	210	98	8.90	8.90	1,914	1,914	100
IN	145	135	135	100	8.95	8.90	1,298	1,202	93
IA	470	430	450	105	8.70	8.75	4,089	3,763	92
KS	83	84	85	101	8.50	8.80	706	739	105
MI	46	44	46	105	9.00	9.10	414	400	97
MN	280	290	280	97	8.95	8.95	2,506	2,596	104
MO	170	170	165	97	8.70	9.00	1,479	1,530	103
NE	185	175	175	100	8.90	8.90	1,647	1,558	95
NC	540	550	540	98	9.00	9.10	4,860	5,005	103
OH	73	73	79	108	9.00	8.90	657	650	99
OK	175	190	190	100	8.90	8.80	1,558	1,672	107
PA	49	50	47	94	9.30	8.75	456	438	96
SD	68	70	73	104	9.10	9.40	619	658	106
TX	49	47	44	94	9.00	8.60	441	404	92
WI	28	26	23	88	8.75	8.75	245	228	93
Oth Sts ⁴	207	208	205	99	8.81	9.12	1,821	1,895	104
US	2,886	2,870	2,870	100	8.88	8.93	25,629	25,633	100

¹ May not add due to rounding.

² Number of pigs born March-May that were still on hand June 1 or had been sold.

³ Intentions.

⁴ Individual State estimates not available for the 33 other States.

**Farrowings: Number of Sows, Pigs per Litter, and Pig Crop
by State and United States, June-August 2003-2005 ¹**

State	Sows Farrowing				Pigs per Litter		Pig Crop ²		
	2003	2004	2005 ³		2003	2004	2003	2004	
			Number	as % of 2004				Number	as % of 2003
	<i>1,000 Head</i>	<i>1,000 Head</i>	<i>1,000 Head</i>	<i>Percent</i>	<i>Number</i>	<i>Number</i>	<i>1,000 Head</i>	<i>1,000 Head</i>	<i>Percent</i>
AR	37	43	43	100	9.60	9.40	355	404	114
CO	70	70	78	111	8.70	8.40	609	588	97
IL	215	210	210	100	8.85	8.90	1,903	1,869	98
IN	150	140	140	100	8.95	9.00	1,343	1,260	94
IA	460	440	440	100	8.70	8.90	4,002	3,916	98
KS	80	87	85	98	8.75	8.80	700	766	109
MI	47	48	46	96	9.00	9.20	423	442	104
MN	275	285	280	98	8.90	9.05	2,448	2,579	105
MO	170	170	170	100	8.95	9.00	1,522	1,530	101
NE	185	175	175	100	8.80	8.90	1,628	1,558	96
NC	560	560	550	98	9.00	9.15	5,040	5,124	102
OH	76	75	79	105	8.90	8.90	676	668	99
OK	185	195	190	97	9.00	9.00	1,665	1,755	105
PA	51	46	48	104	9.40	9.20	479	423	88
SD	70	68	73	107	9.30	9.30	651	632	97
TX	49	56	47	84	8.70	9.05	426	507	119
WI	29	24	24	100	8.60	8.85	249	212	85
Oth Sts ⁴	209	213	202	95	8.88	9.06	1,855	1,929	104
US	2,918	2,905	2,880	99	8.90	9.01	25,974	26,162	101

¹ May not add due to rounding.

² Number of pigs born June-August that were still on hand September 1 or had been sold.

³ Intentions.

⁴ Individual State estimates not available for the 33 other States.

**Farrowings: Number of Sows, Pigs per Litter, and Pig Crop
by State and United States, September-November 2003-2004¹**

State	Sows Farrowing			Pigs per Litter		Pig Crop ²		
	2003	2004		2003	2004	2003	2004	
		Number	as % of 2003				Number	as % of 2003
	<i>1,000 Head</i>	<i>1,000 Head</i>	<i>Percent</i>	<i>Number</i>	<i>Number</i>	<i>1,000 Head</i>	<i>1,000 Head</i>	<i>Percent</i>
AR	35	42	120	9.50	9.50	333	399	120
CO	70	72	103	8.40	8.45	588	608	103
IL	205	205	100	8.85	8.85	1,814	1,814	100
IN	145	135	93	8.85	8.85	1,283	1,195	93
IA	440	450	102	8.80	8.90	3,872	4,005	103
KS	81	82	101	8.70	8.80	705	722	102
MI	51	44	86	8.80	9.20	449	405	90
MN	280	280	100	9.00	9.10	2,520	2,548	101
MO	175	170	97	9.10	8.95	1,593	1,522	96
NE	185	170	92	9.00	9.00	1,665	1,530	92
NC	540	540	100	9.10	9.00	4,914	4,860	99
OH	74	77	104	8.80	9.00	651	693	106
OK	185	190	103	8.70	8.90	1,610	1,691	105
PA	51	49	96	9.50	9.50	485	466	96
SD	70	70	100	9.10	9.20	637	644	101
TX	33	45	136	8.20	8.95	271	403	149
WI	26	25	96	8.70	8.80	226	220	97
Oth Sts ³	210	206	98	8.93	8.91	1,872	1,833	98
US	2,856	2,852	100	8.93	8.96	25,488	25,558	100

¹ May not add due to rounding.

² Number of pigs born September-November that were still on hand December 1 or had been sold.

³ Individual State estimates not available for the 33 other States.

**Monthly Farrowings: Number of Sows, Pigs per Litter, and Pig Crop,
United States, December-November 2004-2005^{1 2}**

Month	Sows Farrowing		Pigs per Litter		Pig Crop	
	2004	2005	2004	2005	2004	2005
	<i>1,000 Head</i>	<i>1,000 Head</i>	<i>Number</i>	<i>Number</i>	<i>1,000 Head</i>	<i>1,000 Head</i>
Dec ¹	935	946	8.84	8.89	8,265	8,410
Jan	954	959	8.86	8.94	8,448	8,573
Feb	947	946	8.86	8.99	8,392	8,506
Mar	958		8.89		8,515	
Apr	957		8.93		8,550	
May	955		8.97		8,568	
Jun	978		8.99		8,792	
Jul	970		9.00		8,730	
Aug	957		9.03		8,640	
Sep	958		8.97		8,589	
Oct	951		8.96		8,524	
Nov	943		8.96		8,445	
Total	11,462		8.94		102,457	

¹ December preceding year.

² Monthly values may not add to quarterly or annual totals due to rounding.

Reliability of March 1 Hogs and Pigs Estimates

Survey Procedures: A random sample of roughly 10,600 U.S. producers was surveyed to provide data for these estimates. Survey procedures ensured that all hog and pig producers, regardless of size, had a chance to be included in the survey. Large producers were sampled more heavily than small operations. Data were collected from about 8,600 operations, 81 percent of the total sample, during the first-half of March by mail, telephone, and face-to-face personal interviews. Regardless of when operations responded, they were asked to report inventories as of March 1.

Estimation Procedures: These hogs and pigs estimates were prepared by the Agricultural Statistics Board after reviewing recommendations and analysis submitted by each State office. National and State survey data were reviewed for reasonableness with each other and with estimates from past years using a balance sheet. The balance sheet begins with the previous inventory estimate, adds the estimates of births and imports, and subtracts the estimates of slaughter, exports, and deaths. This indicated ending inventory level is compared to the Agricultural Statistics Board estimate for reasonableness.

Revision Policy: Revisions to previous estimates are made to improve quarter to quarter relationships. Estimates for the previous four quarters are subject to revision when current estimates are made. In December, estimates for all quarters of the current and previous year are reviewed. The reviews are primarily based on hog check-off receipts and slaughter. Estimates will also be reviewed after data from the Department of Agriculture five-year Census of Agriculture are available. No revisions will be made after that date.

Reliability: Since all operations raising hogs are not included in the sample, survey estimates are subject to sampling variability. Survey results are also subject to non-sampling errors such as omissions, duplication, and mistakes in reporting, recording, and processing the data. The affects of these errors cannot be measured directly. They are minimized through rigid quality controls in the data collection process and through a careful review of all reported data for consistency and reasonableness.

To assist users in evaluating the reliability of the estimates in this report, the "Root Mean Square Error" is shown for selected items in the following table. The "**Root Mean Square Error**" is a statistical measure based on past performance and is computed using the difference between first and final estimates. The "Root Mean Square Error" for hog inventory estimates over the past 20 quarters is 1.2 percent. This means that chances are 2 out of 3 that the final estimate will not be above or below the current estimate of 59.9 million head by more than 1.2 percent. Chances are 9 out of 10 that the difference will not exceed 2.0 percent.

Reliability of March 1 Hog Estimates ¹

Item	Root Mean Square Error	90% Confidence Level		Difference Between First and Latest Estimates			Quarters	
				Average	Smallest	Largest	First Above Latest	First Below Latest
				<i>1,000 Head</i>	<i>1,000 Head</i>	<i>1,000 Head</i>	<i>Number</i>	<i>Number</i>
All Hogs & Pigs	1.2	2.0	1,198	598	76	1,386	6	14
Pig Crop	1.6	2.8	714	318	0	926	6	13
Expected Farrowings								
Next Quarter	1.8	3.2	92	40	7	158	9	11
Following Quarter	2.1	3.6	104	45	2	146	10	10

¹ Based on quarterly records for the past 20 quarters.

Index

Page

Farrowings: Number of Sows, Pig Crop, and Pigs per Litter, United States	2
Farrowings: Number of Sows, Pigs per Litter, and Pig Crop by State and United States, December-February	12
Farrowings: Number of Sows, Pigs per Litter, and Pig Crop by State and United States, June-August	14
Farrowings: Number of Sows, Pigs per Litter, and Pig Crop by State and United States, March-May	13
Farrowings: Number of Sows, Pigs per Litter, and Pig Crop by State and United States, September-November	15
Hogs and Pigs: Breeding, Market, and Total Inventory by State and United States, December 1	10
Hogs and Pigs: Breeding, Market, and Total Inventory by State and United States, June 1	6
Hogs and Pigs: Breeding, Market, and Total Inventory by State and United States, March 1	4
Hogs and Pigs: Breeding, Market, and Total Inventory by State and United States, September 1	8
Hogs and Pigs: Inventory Number by Class, Weight Group, and Quarter, United States	1
Market Hogs and Pigs: Inventory Number by Weight Group, State, and United States, December 1	11
Market Hogs and Pigs: Inventory Number by Weight Group, State, and United States, June 1	7
Market Hogs and Pigs: Inventory Number by Weight Group, State, and United States, March 1	5
Market Hogs and Pigs: Inventory Number by Weight Group, State, and United States, September 1	9
Monthly Farrowings: Number of Sows, Pigs per Litter, and Pig Crop, United States, December-November	16
Pigs per Litter: By Size of Operation, United States	2
Reliability of Hogs and Pigs Estimates	17

ACCESS TO REPORTS!!

For your convenience, there are several ways to obtain NASS reports, data products, and services:

INTERNET ACCESS

All NASS reports are available free of charge on the worldwide Internet. For access, connect to the Internet and go to the NASS Home Page at: www.usda.gov/nass/. Select "Today's Reports" or Publications and then Reports Calendar or Publications and then Search, by Title or Subject.

E-MAIL SUBSCRIPTION

All NASS reports are available by subscription free of charge direct to your e-mail address. Starting with the NASS Home Page at www.usda.gov/nass/, click on **Publications**, then click on the **Subscribe by E-mail** button which takes you to the page describing e-mail delivery of reports. Finally, click on **Go to the Subscription Page** and follow the instructions.

PRINTED REPORTS OR DATA PRODUCTS

CALL OUR TOLL-FREE ORDER DESK: 800-999-6779 (U.S. and Canada)
Other areas, please call 703-605-6220 FAX: 703-605-6900
(Visa, MasterCard, check, or money order acceptable for payment.)

ASSISTANCE

For **assistance** with general agricultural statistics or further information about NASS or its products or services, contact the **Agricultural Statistics Hotline** at **800-727-9540**, 7:30 a.m. to 4:00 p.m. ET, or e-mail: **nass@nass.usda.gov**.

The United States Department of Agriculture (USDA) prohibits discrimination in all its programs on the basis of race, color, national origin, gender, religion, age, disability, political beliefs, sexual orientation, and marital or family status. (Not all prohibited bases apply to all programs.) Persons with disabilities who require alternative means for communication of program information (braille, large print, audiotape, etc.) should contact the USDA's TARGET Center at 202-720-2600 (voice and TDD).

To file a complaint of discrimination, write USDA, Director, Office of Civil Rights, Room 326-W, Whitten Building, 1400 Independence Avenue, SW, Washington, D.C., 20250-9410, or call 202-720-5964 (voice or TDD). USDA is an equal opportunity provider and employer.