



NASS

FACT FINDERS FOR AGRICULTURE
UNITED STATES DEPARTMENT OF AGRICULTURE

Washington, D.C.

Quarterly Hogs and Pigs

Released September 30, 2005, by the National Agricultural Statistics Service (NASS), Agricultural Statistics Board, U.S. Department of Agriculture. For information on *Quarterly Hogs and Pigs* call Bruce Boess at 202-720-3106, office hours 7:30 a.m. to 4:00 p.m. ET.

U.S. Hog Inventory Up Slightly

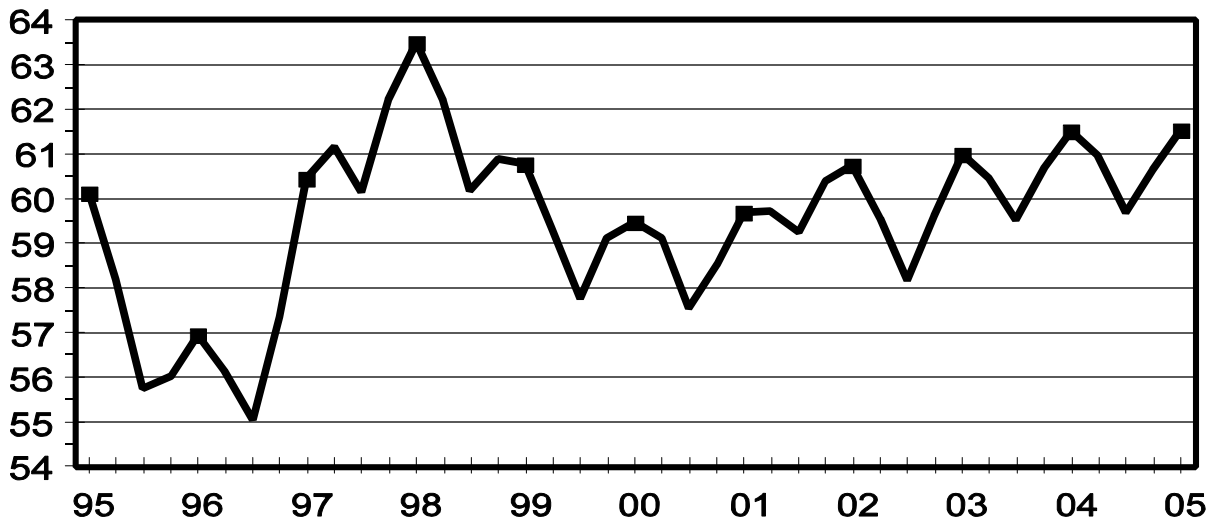
U.S. inventory of all hogs and pigs on September 1, 2005 was 61.5 million head. This was up slightly from September 1, 2004, and up 1 percent from June 1, 2005.

Breeding inventory, at 5.97 million head, was up less than 1 percent from last year but down less than 1 percent from last quarter. **Market hog inventory**, at 55.6 million head, was virtually unchanged from last year but up 2 percent from last quarter.

The June - August 2005 U.S. pig crop, at 26.3 million head, was up slightly from 2004 and up 1 percent from 2003. Sows farrowing during this period totaled 2.90 million head, down slightly from last year. The sows farrowed during this quarter represented 49 percent of the breeding herd. The average pigs saved per litter was 9.07 for the June-August 2005 period, compared to 9.01 last year. Pigs saved per litter by size of operation ranged from 7.60 for operations with 1-99 hogs and pigs to 9.10 for operations with more than 5,000 hogs and pigs.

U.S. Quarterly Hogs and Pigs Inventory September 1

Million Head



U.S. hog producers intend to have 2.89 million sows farrow during the September-November 2005 quarter, unchanged from the actual farrowings during the same period in 2004, but up 1 percent from 2003. Intended farrowings for December 2005-February 2006, at 2.88 million sows, are up 1 percent from both 2005 and 2004.

The total number of hogs under contract, owned by operations with over 5,000 head, but raised by contractees, accounted for 39 percent of the total U.S. hog inventory, unchanged from last year.

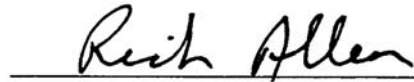
Revisions

All inventory and pig crop estimates for September 2004 through June 2005 were reviewed using final pig crop, official slaughter, death loss, and updated import and export data. Based on the findings of this review, an adjustment of less than one-half of one percent was made to the March 2005 and June 2005 total inventory. An adjustment of slightly larger than one-half of one percent was made to the December 2004-February 2005 pig crop.

This report was approved on September 30, 2005.



Acting Secretary of
Agriculture
Charles F. Conner



Agricultural Statistics Board
Chairperson
Rich Allen

Contents

Page

Quarterly U.S. Inventory by Class and Weight Group, 2003-2005	1
Quarterly U.S. Sows Farrowed, Pig Crop, and Pigs per Litter, 2003-2005	2
Hogs and Pigs: Inventory by State and U.S., 2003-2005	
March 1	5
June 1	7
September 1	9
December 1	11
Farrowings: Number of Sows, Pigs per Litter, Pig Crop by State and U.S., 2003-2005	
December-February	13
March-May	14
June-August	15
September-November	16
Monthly U.S. Farrowings, December-November 2004-2005	17
Reliability Statement	18
Index	20

**Hogs and Pigs: Inventory Number by Class, Weight Group,
and Quarter, United States, 2003-2005 ¹**

Item	2003	2004	2005	2005 as % of	
				2003	2004
	<i>1,000 Head</i>	<i>1,000 Head</i>	<i>1,000 Head</i>	<i>Percent</i>	<i>Percent</i>
March 1 Inventory					
All Hogs and Pigs	58,183	59,520	59,699	103	100
Kept for Breeding	6,027	5,961	5,941	99	100
Market	52,156	53,558	53,757	103	100
Market Hogs and Pigs by Weight Groups					
Under 60 Pounds	19,086	19,823	19,667	103	99
60-119 Pounds	12,639	12,954	13,087	104	101
120-179 Pounds	10,915	11,205	11,360	104	101
180 Pounds and Over	9,516	9,578	9,644	101	101
June 1 Inventory					
All Hogs and Pigs	59,602	60,698	60,632	102	100
Kept for Breeding	6,026	5,937	5,977	99	101
Market	53,576	54,760	54,654	102	100
Market Hogs and Pigs by Weight Groups					
Under 60 Pounds	20,433	20,292	20,223	99	100
60-119 Pounds	12,952	13,500	13,356	103	99
120-179 Pounds	10,828	11,256	11,263	104	100
180 Pounds and Over	9,363	9,714	9,813	105	101
September 1 Inventory					
All Hogs and Pigs	61,009	61,519	61,536	101	100
Kept for Breeding	5,938	5,962	5,972	101	100
Market	55,071	55,556	55,563	101	100
Market Hogs and Pigs by Weight Groups					
Under 60 Pounds	20,438	20,729	20,634	101	100
60-119 Pounds	13,739	13,613	13,716	100	101
120-179 Pounds	11,384	11,235	11,384	100	101
180 Pounds and Over	9,510	9,981	9,830	103	98
December 1 Inventory					
All Hogs and Pigs	60,444	60,975			
Kept for Breeding	6,009	5,969			
Market	54,434	55,005			
Market Hogs and Pigs by Weight Groups					
Under 60 Pounds	19,778	19,980			
60-119 Pounds	13,238	13,439			
120-179 Pounds	11,109	11,186			
180 Pounds and Over	10,311	10,401			

¹ May not add due to rounding.

**Farrowings: Number of Sows, Pig Crop, and Pigs per Litter,
United States, 2003-2006 ¹**

Item	2003	2004	2005	2006	2005 as % of		2006 as % of 2005
					2003	2004	
	<i>1,000 Head</i>	<i>1,000 Head</i>	<i>1,000 Head</i>	<i>1,000 Head</i>	<i>Percent</i>	<i>Percent</i>	<i>Percent</i>
Sows Farrowing							
Dec-Feb ^{2,3}	2,769	2,836	2,835	2,875	102	100	101
Mar-May	2,886	2,870	2,870		99	100	
Dec-May ²	5,655	5,706	5,705		101	100	
Jun-Aug	2,918	2,905	2,898		99	100	
Sep-Nov ⁴	2,856	2,888	2,888		101	100	
Jun-Nov ⁵	5,773	5,793	5,786		100	100	
Pig Crop							
Dec-Feb ²	24,400	25,105	25,346		104	101	
Mar-May	25,629	25,633	25,884		101	101	
Dec-May ²	50,029	50,737	51,230		102	101	
Jun-Aug	25,974	26,162	26,273		101	100	
Sep-Nov	25,488	25,881					
Jun-Nov	51,462	52,043					
	<i>Number</i>	<i>Number</i>	<i>Number</i>	<i>Number</i>	<i>Percent</i>	<i>Percent</i>	<i>Percent</i>
Pigs per Litter							
Dec-Feb ²	8.81	8.85	8.94		101	101	
Mar-May	8.88	8.93	9.02		102	101	
Dec-May ²	8.85	8.89	8.98		102	101	
Jun-Aug	8.90	9.01	9.07		102	101	
Sep-Nov	8.93	8.96					
Jun-Nov	8.91	8.98					

¹ May not add due to rounding.

² December preceding year.

³ Intentions for 2006.

⁴ Intentions for 2005.

⁵ Actual farrowings for June-August plus intentions for September-November.

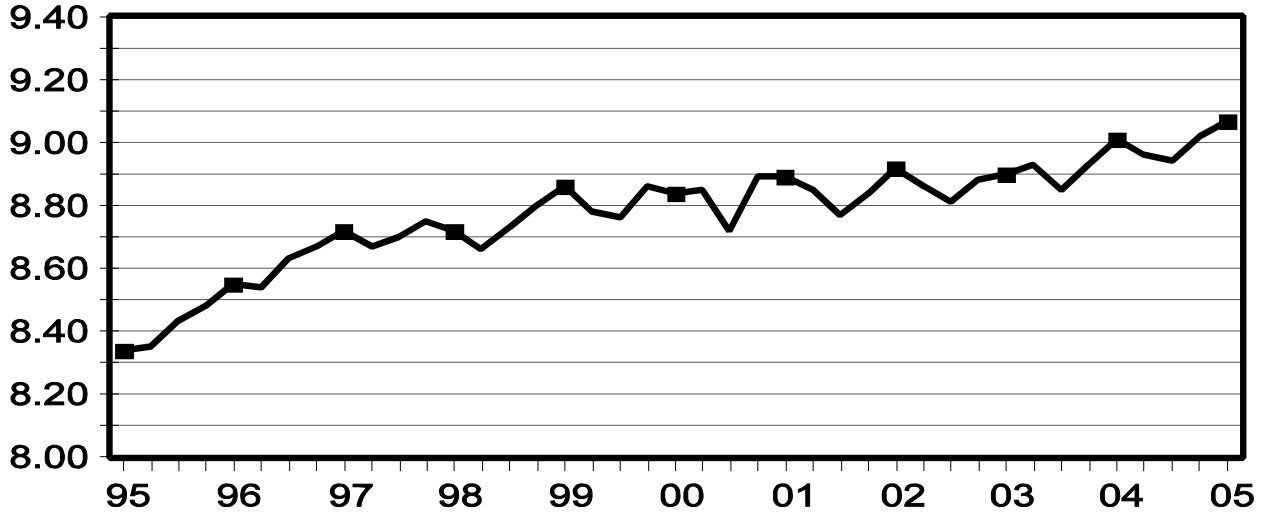
Pigs per Litter: By Size of Operation, United States, 2004-2005

Pig Crop	Pigs per Litter on Operations Having					
	1-99 Head	100-499 Head	500-999 Head	1,000-1,999 Head	2,000-4,999 Head	5,000+ Head
	<i>Number</i>	<i>Number</i>	<i>Number</i>	<i>Number</i>	<i>Number</i>	<i>Number</i>
2004						
Dec-Feb ¹	7.60	7.90	8.20	8.60	8.70	9.00
Mar-May	7.70	7.90	8.30	8.70	8.90	9.00
Jun-Aug	7.50	7.80	8.30	8.80	8.90	9.10
Sep-Nov	7.50	7.70	8.20	8.80	8.90	9.10
2005						
Dec-Feb ¹	7.50	7.80	8.30	8.80	8.90	9.00
Mar-May	7.50	7.90	8.30	8.80	9.00	9.10
Jun-Aug	7.60	7.90	8.70	8.80	9.00	9.10
Sep-Nov						

¹ December preceding year.

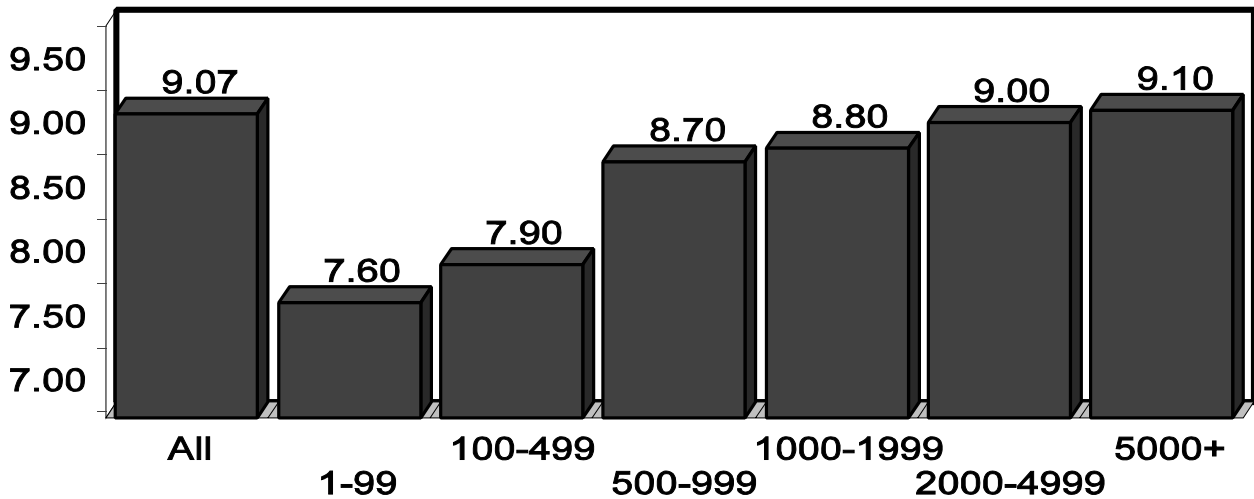
U.S. Quarterly Litter Rate June - August

Number Head



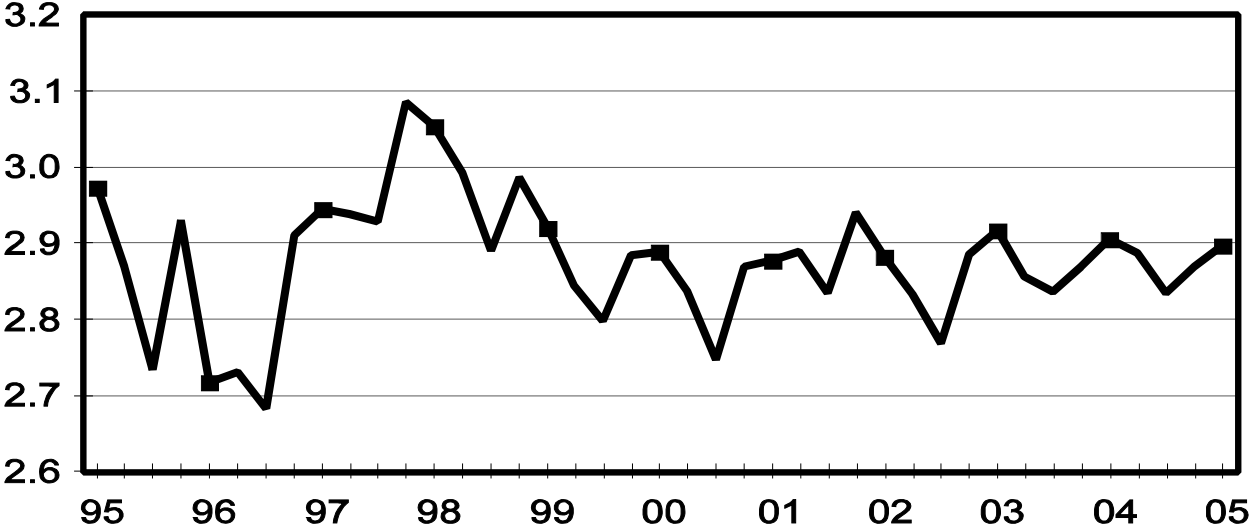
U.S. Pigs per Litter By Size of Operation, June - August 2005

Number Head



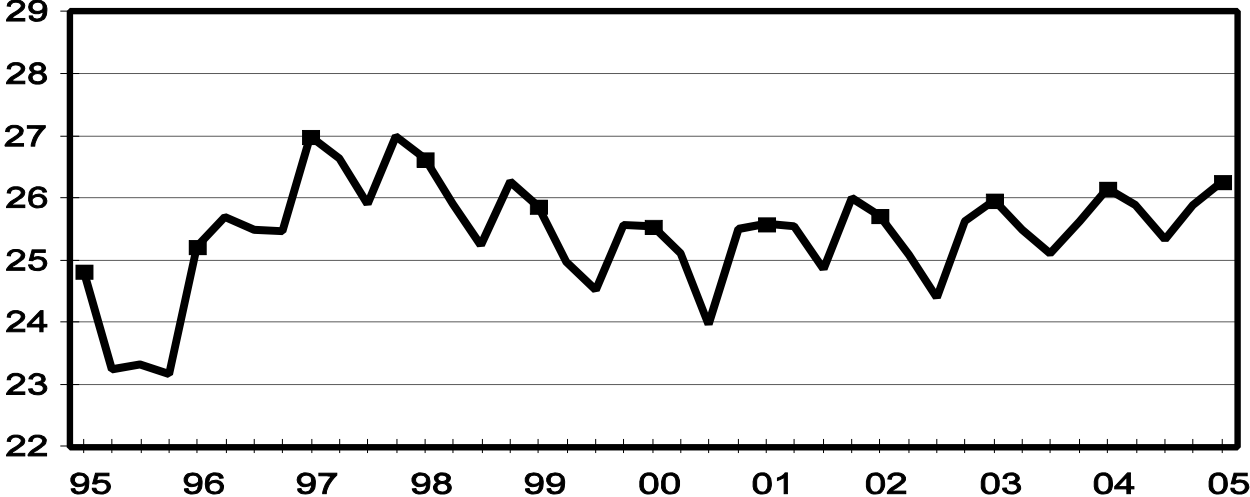
U.S. Quarterly Sows Farrowed June - August

Million Head



U.S. Quarterly Pig Crop June - August

Million Head



**Hogs and Pigs: Breeding, Market, and Total Inventory
by State and United States, March 1, 2004-2005 ¹**

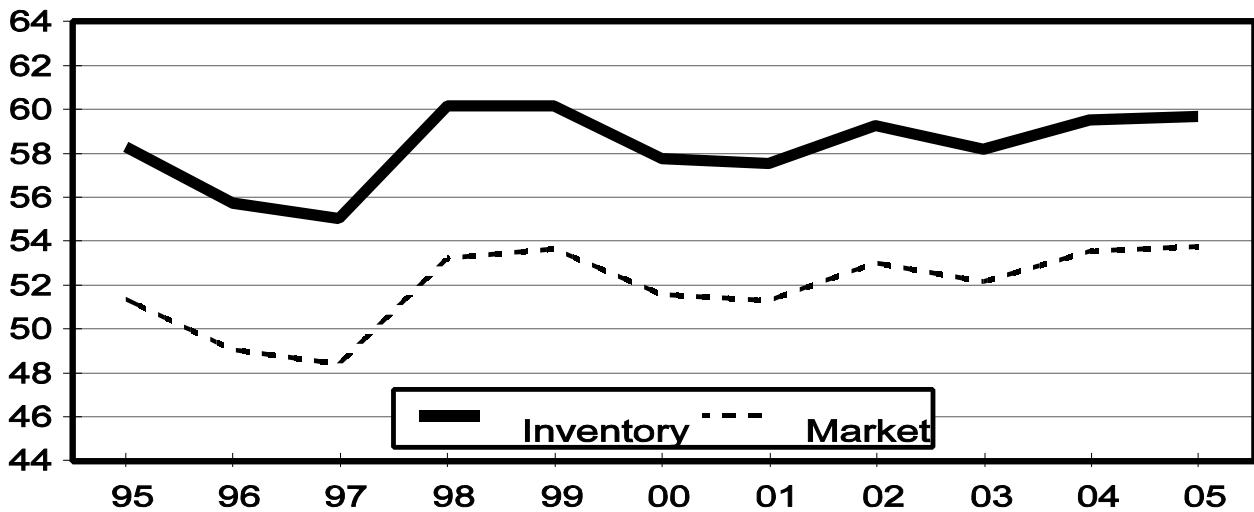
State	Breeding			Market			Total		
	2004	2005		2004	2005		2004	2005	
		Number	as % of 2004		Number	as % of 2004		Number	as % of 2004
	<i>1,000 Head</i>	<i>1,000 Head</i>	<i>Percent</i>	<i>1,000 Head</i>	<i>1,000 Head</i>	<i>Percent</i>	<i>1,000 Head</i>	<i>1,000 Head</i>	<i>Percent</i>
AR	85	85	100	230	245	107	315	330	105
CO	140	140	100	550	670	122	690	810	117
IL	410	430	105	3,440	3,570	104	3,850	4,000	104
IN	300	290	97	2,850	2,710	95	3,150	3,000	95
IA	1,040	1,080	104	14,460	15,020	104	15,500	16,100	104
KS	170	155	91	1,550	1,525	98	1,720	1,680	98
MI	100	100	100	830	820	99	930	920	99
MN	600	590	98	5,900	5,710	97	6,500	6,300	97
MO	330	330	100	2,570	2,520	98	2,900	2,850	98
NE	360	355	99	2,490	2,395	96	2,850	2,750	96
NC	1,020	1,010	99	8,880	8,690	98	9,900	9,700	98
OH	160	160	100	1,360	1,340	99	1,520	1,500	99
OK	350	360	103	2,000	2,020	101	2,350	2,380	101
PA	120	105	88	910	995	109	1,030	1,100	107
SD	145	145	100	1,105	1,215	110	1,250	1,360	109
TX	110	95	86	810	815	101	920	910	99
WI	55	50	91	395	380	96	450	430	96
Oth Sts ²	466	461	99	3,228	3,117	97	3,695	3,579	97
US	5,961	5,941	100	53,558	53,757	100	59,520	59,699	100

¹ May not add due to rounding.

² Individual State estimates not available for the 33 other States.

March 1 Hog Inventory & Market Hogs United States

Million Head



**Market Hogs and Pigs: Inventory Number by Weight Group,
State, and United States, March 1, 2004-2005 ¹**

State	Under 60 Lbs.		60-119 Lbs.		120-179 Lbs.		180 Lbs. and Over	
	2004	2005	2004	2005	2004	2005	2004	2005
	<i>1,000 Head</i>	<i>1,000 Head</i>	<i>1,000 Head</i>	<i>1,000 Head</i>	<i>1,000 Head</i>	<i>1,000 Head</i>	<i>1,000 Head</i>	<i>1,000 Head</i>
AR	135	145	30	35	30	30	35	35
CO	315	365	60	115	65	85	110	105
IL	1,260	1,360	820	840	750	760	610	610
IN	1,060	1,000	660	650	620	570	510	490
IA	4,510	4,330	4,000	4,230	3,250	3,490	2,700	2,970
KS	530	540	285	255	310	280	425	450
MI	300	325	205	190	175	160	150	145
MN	2,250	2,230	1,410	1,390	1,280	1,250	960	840
MO	1,270	1,190	510	520	470	480	320	330
NE	980	970	640	600	470	470	400	355
NC	3,500	3,410	2,180	2,030	1,800	1,830	1,400	1,420
OH	555	550	315	310	290	300	200	180
OK	940	960	310	330	250	260	500	470
PA	300	290	240	290	210	230	160	185
SD	385	430	245	295	265	270	210	220
TX	265	295	180	190	195	160	170	170
WI	155	145	90	90	80	80	70	65
Oth Sts ²	1,113	1,132	774	727	695	655	648	604
US	19,823	19,667	12,954	13,087	11,205	11,360	9,578	9,644

¹ Weight groups may not add to Market due to rounding.

² Individual State estimates not available for the 33 other States.

**Hogs and Pigs: Breeding, Market, and Total Inventory
by State and United States, June 1, 2004-2005¹**

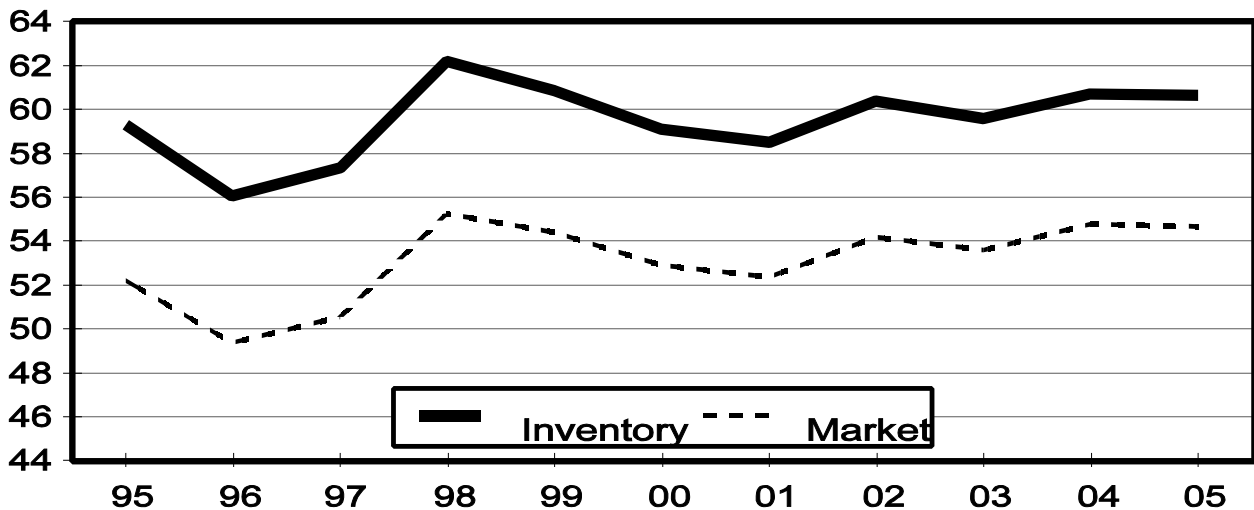
State	Breeding			Market			Total		
	2004	2005		2004	2005		2004	2005	
		Number	as % of 2004		Number	as % of 2004		Number	as % of 2004
	<i>1,000 Head</i>	<i>1,000 Head</i>	<i>Percent</i>	<i>1,000 Head</i>	<i>1,000 Head</i>	<i>Percent</i>	<i>1,000 Head</i>	<i>1,000 Head</i>	<i>Percent</i>
AR	85	85	100	250	205	82	335	290	87
CO	140	140	100	610	630	103	750	770	103
IL	420	430	102	3,530	3,670	104	3,950	4,100	104
IN	290	300	103	2,860	2,800	98	3,150	3,100	98
IA	1,060	1,070	101	15,040	15,130	101	16,100	16,200	101
KS	165	155	94	1,565	1,535	98	1,730	1,690	98
MI	95	100	105	815	800	98	910	900	99
MN	600	600	100	6,000	6,000	100	6,600	6,600	100
MO	320	340	106	2,630	2,510	95	2,950	2,850	97
NE	360	355	99	2,490	2,395	96	2,850	2,750	96
NC	1,010	1,020	101	9,190	8,880	97	10,200	9,900	97
OH	155	160	103	1,315	1,420	108	1,470	1,580	107
OK	350	360	103	2,100	2,020	96	2,450	2,380	97
PA	110	100	91	900	970	108	1,010	1,070	106
SD	145	145	100	1,085	1,245	115	1,230	1,390	113
TX	110	100	91	780	820	105	890	920	103
WI	50	50	100	390	370	95	440	420	95
Oth Sts ²	472	467	99	3,210	3,254	101	3,683	3,722	101
US	5,937	5,977	101	54,760	54,654	100	60,698	60,632	100

¹ May not add due to rounding.

² Individual State estimates not available for the 33 other States.

June 1 Hog Inventory & Market Hogs United States

Million Head



**Market Hogs and Pigs: Inventory Number by Weight Group,
State, and United States, June 1, 2004-2005 ¹**

State	Under 60 Lbs.		60-119 Lbs.		120-179 Lbs.		180 Lbs. and Over	
	2004	2005	2004	2005	2004	2005	2004	2005
	<i>1,000 Head</i>	<i>1,000 Head</i>	<i>1,000 Head</i>	<i>1,000 Head</i>	<i>1,000 Head</i>	<i>1,000 Head</i>	<i>1,000 Head</i>	<i>1,000 Head</i>
AR	145	140	40	20	30	20	35	25
CO	335	345	95	110	80	60	100	115
IL	1,330	1,340	870	900	750	770	580	660
IN	1,040	1,020	660	700	600	570	560	510
IA	4,540	4,550	4,300	4,130	3,350	3,550	2,850	2,900
KS	530	550	330	305	275	280	430	400
MI	300	300	200	200	170	155	145	145
MN	2,380	2,380	1,420	1,440	1,260	1,250	940	930
MO	1,300	1,210	550	490	480	460	300	350
NE	980	960	660	610	460	470	390	355
NC	3,690	3,540	2,200	2,140	1,800	1,740	1,500	1,460
OH	535	580	310	340	290	300	180	200
OK	980	960	330	330	310	230	480	500
PA	310	280	230	290	190	230	170	170
SD	370	455	290	320	250	250	175	220
TX	255	310	165	150	185	165	175	195
WI	150	140	85	90	80	70	75	70
Oth Sts ²	1,122	1,163	765	791	696	693	629	608
US	20,292	20,223	13,500	13,356	11,256	11,263	9,714	9,813

¹ Weight groups may not add to Market due to rounding.

² Individual State estimates not available for the 33 other States.

**Hogs and Pigs: Breeding, Market, and Total Inventory
by State and United States, September 1, 2004-2005¹**

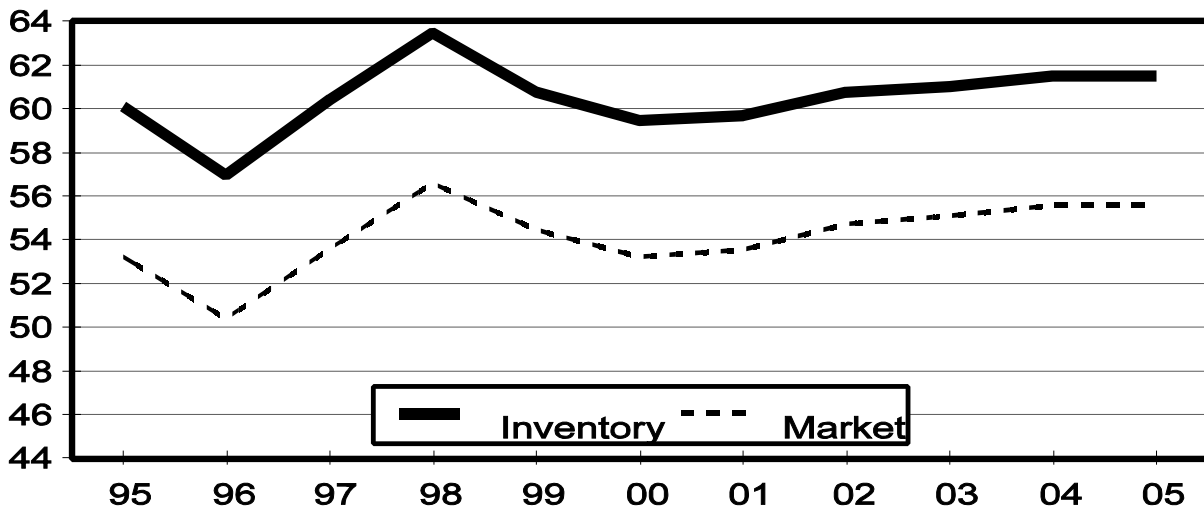
State	Breeding			Market			Total		
	2004	2005		2004	2005		2004	2005	
		Number	as % of 2004		Number	as % of 2004		Number	as % of 2004
	<i>1,000 Head</i>	<i>1,000 Head</i>	<i>Percent</i>	<i>1,000 Head</i>	<i>1,000 Head</i>	<i>Percent</i>	<i>1,000 Head</i>	<i>1,000 Head</i>	<i>Percent</i>
AR	80	85	106	240	200	83	320	285	89
CO	140	145	104	580	695	120	720	840	117
IL	410	420	102	3,590	3,630	101	4,000	4,050	101
IN	300	300	100	2,950	2,750	93	3,250	3,050	94
IA	1,060	1,080	102	15,340	15,420	101	16,400	16,500	101
KS	160	155	97	1,630	1,555	95	1,790	1,710	96
MI	100	100	100	840	810	96	940	910	97
MN	590	600	102	6,010	6,200	103	6,600	6,800	103
MO	330	340	103	2,570	2,510	98	2,900	2,850	98
NE	360	350	97	2,490	2,400	96	2,850	2,750	96
NC	1,030	1,020	99	9,270	9,080	98	10,300	10,100	98
OH	160	160	100	1,350	1,380	102	1,510	1,540	102
OK	360	360	100	2,100	2,040	97	2,460	2,400	98
PA	105	95	90	955	985	103	1,060	1,080	102
SD	140	140	100	1,080	1,230	114	1,220	1,370	112
TX	110	100	91	920	880	96	1,030	980	95
WI	50	50	100	390	370	95	440	420	95
Oth Sts ²	477	472	99	3,251	3,428	105	3,729	3,901	105
US	5,962	5,972	100	55,556	55,563	100	61,519	61,536	100

¹ May not add due to rounding.

² Individual State estimates not available for the 33 other States.

September 1 Hog Inventory & Market Hogs United States

Million Head



**Market Hogs and Pigs: Inventory Number by Weight Group,
State, and United States, September 1, 2004-2005 ¹**

State	Under 60 Lbs.		60-119 Lbs.		120-179 Lbs.		180 Lbs. and Over	
	2004	2005	2004	2005	2004	2005	2004	2005
	<i>1,000 Head</i>	<i>1,000 Head</i>	<i>1,000 Head</i>	<i>1,000 Head</i>	<i>1,000 Head</i>	<i>1,000 Head</i>	<i>1,000 Head</i>	<i>1,000 Head</i>
AR	140	145	35	20	35	15	30	20
CO	320	390	85	100	75	85	100	120
IL	1,380	1,380	840	890	770	800	600	560
IN	1,080	1,000	710	720	600	550	560	480
IA	4,740	4,760	4,200	4,320	3,350	3,450	3,050	2,890
KS	550	535	340	345	285	265	455	410
MI	320	310	200	190	170	160	150	150
MN	2,420	2,450	1,440	1,500	1,240	1,320	910	930
MO	1,270	1,180	500	520	450	470	350	340
NE	970	980	660	620	470	450	390	350
NC	3,670	3,650	2,350	2,130	1,850	1,780	1,400	1,520
OH	570	570	330	330	270	285	180	195
OK	1,000	920	370	290	250	270	480	560
PA	290	300	245	270	195	220	225	195
SD	390	430	270	315	240	255	180	230
TX	340	280	185	210	210	195	185	195
WI	150	145	90	90	80	70	70	65
Oth Sts ²	1,129	1,209	763	856	695	744	666	620
US	20,729	20,634	13,613	13,716	11,235	11,384	9,981	9,830

¹ Weight groups may not add to Market due to rounding.

² Individual State estimates not available for the 33 other States.

**Hogs and Pigs: Breeding, Market, and Total Inventory
by State and United States, December 1, 2003-2004 ¹**

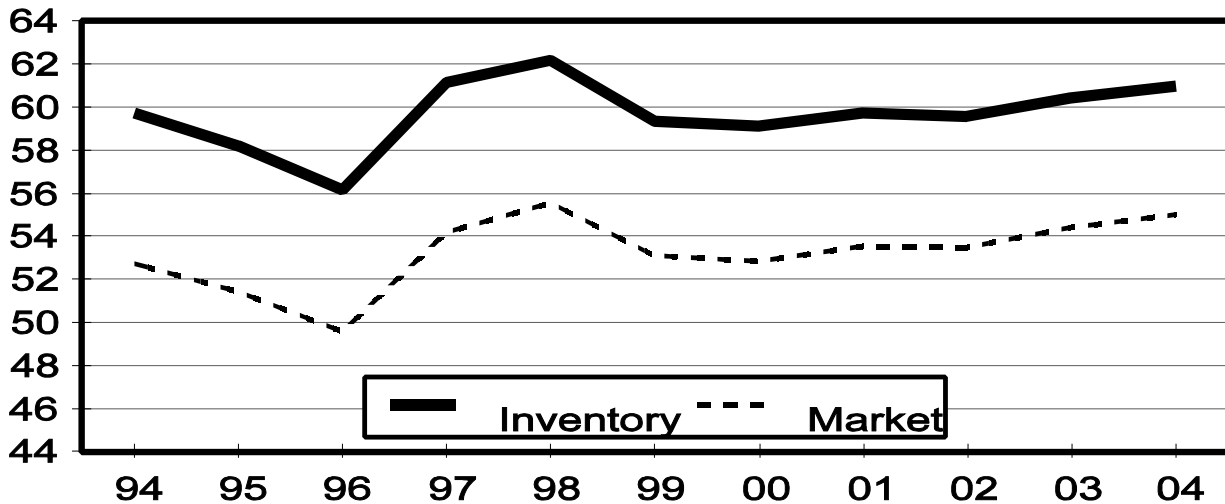
State	Breeding			Market			Total		
	2003	2004		2003	2004		2003	2004	
		Number	as % of 2003		Number	as % of 2003		Number	as % of 2003
	<i>1,000 Head</i>	<i>1,000 Head</i>	<i>Percent</i>	<i>1,000 Head</i>	<i>1,000 Head</i>	<i>Percent</i>	<i>1,000 Head</i>	<i>1,000 Head</i>	<i>Percent</i>
AR	85	85	100	225	245	109	310	330	106
CO	135	140	104	615	660	107	750	800	107
IL	410	420	102	3,590	3,680	103	4,000	4,100	103
IN	300	290	97	2,800	2,910	104	3,100	3,200	103
IA	1,060	1,070	101	14,840	15,230	103	15,900	16,300	103
KS	160	155	97	1,490	1,555	104	1,650	1,710	104
MI	110	110	100	840	840	100	950	950	100
MN	600	600	100	5,900	5,900	100	6,500	6,500	100
MO	340	340	100	2,610	2,560	98	2,950	2,900	98
NE	370	355	96	2,530	2,495	99	2,900	2,850	98
NC	1,020	1,020	100	8,980	8,880	99	10,000	9,900	99
OH	160	155	97	1,360	1,295	95	1,520	1,450	95
OK	360	360	100	2,020	2,030	100	2,380	2,390	100
PA	120	115	96	990	965	97	1,110	1,080	97
SD	145	140	97	1,135	1,200	106	1,280	1,340	105
TX	105	100	95	825	890	108	930	990	106
WI	55	50	91	425	380	89	480	430	90
Oth Sts ²	474	464	98	3,259	3,290	101	3,734	3,755	101
US	6,009	5,969	99	54,434	55,005	101	60,444	60,975	101

¹ May not add due to rounding.

² Individual State estimates not available for the 33 other States.

December 1 Hog Inventory & Market Hogs United States

Million Head



**Market Hogs and Pigs: Inventory Number by Weight Group,
State, and United States, December 1, 2003-2004 ¹**

State	Under 60 Lbs.		60-119 Lbs.		120-179 Lbs.		180 Lbs. and Over	
	2003	2004	2003	2004	2003	2004	2003	2004
	<i>1,000 Head</i>	<i>1,000 Head</i>	<i>1,000 Head</i>	<i>1,000 Head</i>	<i>1,000 Head</i>	<i>1,000 Head</i>	<i>1,000 Head</i>	<i>1,000 Head</i>
AR	120	130	30	40	30	35	45	40
CO	340	355	70	100	70	75	135	130
IL	1,280	1,410	860	830	770	770	680	670
IN	990	1,010	670	750	580	600	560	550
IA	4,510	4,580	4,130	4,130	3,200	3,340	3,000	3,180
KS	510	460	285	330	280	340	415	425
MI	300	330	205	195	175	160	160	155
MN	2,210	2,250	1,420	1,420	1,250	1,250	1,020	980
MO	1,280	1,200	530	530	460	480	340	350
NE	960	970	650	650	490	470	430	405
NC	3,550	3,520	2,180	2,150	1,750	1,700	1,500	1,510
OH	540	535	330	310	280	270	210	180
OK	920	970	320	340	320	230	460	490
PA	350	280	235	275	195	215	210	195
SD	385	410	250	300	280	260	220	230
TX	245	300	195	200	200	205	185	185
WI	165	135	95	90	85	80	80	75
Oth Sts ²	1,123	1,135	783	799	694	706	661	651
US	19,778	19,980	13,238	13,439	11,109	11,186	10,311	10,401

¹ Weight groups may not add to Market due to rounding.

² Individual State estimates not available for the 33 other States.

**Farrowings: Number of Sows, Pigs per Litter, and Pig Crop
by State and United States, December-February 2004-2006^{1 2}**

State	Sows Farrowing				Pigs Per Litter		Pig Crop ³		
	2004	2005	2006 ⁴		2004	2005	2004	2005	
			Number	as % of 2005				Number	as % of 2004
	<i>1,000 Head</i>	<i>1,000 Head</i>	<i>1,000 Head</i>	<i>Percent</i>	<i>Number</i>	<i>Number</i>	<i>1,000 Head</i>	<i>1,000 Head</i>	<i>Percent</i>
AR	38	43	43	100	9.60	9.55	365	411	113
CO	73	75	80	107	8.30	8.55	606	641	106
IL	205	210	205	98	8.85	8.90	1,814	1,869	103
IN	145	130	140	108	8.85	8.80	1,283	1,144	89
IA	410	440	460	105	8.70	8.90	3,567	3,916	110
KS	84	80	85	106	8.70	8.70	731	696	95
MI	45	44	47	107	8.90	9.00	401	396	99
MN	285	275	280	102	9.05	9.10	2,579	2,503	97
MO	170	170	165	97	9.00	9.05	1,530	1,539	101
NE	175	175	175	100	8.90	9.00	1,558	1,575	101
NC	550	540	540	100	8.95	8.85	4,923	4,779	97
OH	74	77	78	101	8.80	9.00	651	693	106
OK	185	190	190	100	8.60	8.80	1,591	1,672	105
PA	53	47	47	100	8.50	9.50	451	447	99
SD	70	72	69	96	9.20	9.40	644	677	105
TX	46	43	44	102	8.40	9.20	386	396	103
WI	24	24	24	100	8.80	8.75	211	210	100
Oth Sts ⁵	204	200	203	102	8.90	8.92	1,814	1,782	98
US	2,836	2,835	2,875	101	8.85	8.94	25,105	25,346	101

¹ December preceding year.

² May not add due to rounding.

³ Number of pigs born December-February that were still on hand March 1, or had been sold.

⁴ Intentions.

⁵ Individual State estimates not available for the 33 other States.

**Farrowings: Number of Sows, Pigs per Litter, and Pig Crop
by State and United States, March-May 2004-2005 ¹**

State	Sows Farrowing			Pigs per Litter		Pig Crop ²		
	2004	2005		2004	2005	2004	2005	
		Number	as % of 2004				Number	as % of 2004
	<i>1,000 Head</i>	<i>1,000 Head</i>	<i>Percent</i>	<i>Number</i>	<i>Number</i>	<i>1,000 Head</i>	<i>1,000 Head</i>	<i>Percent</i>
AR	41	42	102	9.70	9.70	398	407	102
CO	72	76	106	8.10	8.80	583	669	115
IL	215	210	98	8.90	8.95	1,914	1,880	98
IN	135	135	100	8.90	8.85	1,202	1,195	99
IA	430	440	102	8.75	9.05	3,763	3,982	106
KS	84	83	99	8.80	8.80	739	730	99
MI	44	44	100	9.10	9.00	400	396	99
MN	290	285	98	8.95	9.15	2,596	2,608	100
MO	170	170	100	9.00	9.10	1,530	1,547	101
NE	175	175	100	8.90	9.05	1,558	1,584	102
NC	550	550	100	9.10	8.90	5,005	4,895	98
OH	73	77	105	8.90	9.00	650	693	107
OK	190	190	100	8.80	8.90	1,672	1,691	101
PA	50	47	94	8.75	9.10	438	428	98
SD	70	74	106	9.40	9.30	658	688	105
TX	47	44	94	8.60	9.40	404	414	102
WI	26	24	92	8.75	8.75	228	210	92
Oth Sts ³	208	204	98	9.12	9.16	1,895	1,867	99
US	2,870	2,870	100	8.93	9.02	25,633	25,884	101

¹ May not add due to rounding.

² Number of pigs born March-May that were still on hand June 1, or had been sold.

³ Individual State estimates not available for the 33 other States.

**Farrowings: Number of Sows, Pigs per Litter, and Pig Crop
by State and United States, June-August 2004-2005 ¹**

State	Sows Farrowing			Pigs per Litter		Pig Crop ²		
	2004	2005		2004	2005	2004	2005	
		Number	as % of 2004				Number	as % of 2004
	<i>1,000 Head</i>	<i>1,000 Head</i>	<i>Percent</i>	<i>Number</i>	<i>Number</i>	<i>1,000 Head</i>	<i>1,000 Head</i>	<i>Percent</i>
AR	43	43	100	9.40	9.60	404	413	102
CO	70	80	114	8.40	8.80	588	704	120
IL	210	205	98	8.90	8.90	1,869	1,825	98
IN	140	140	100	9.00	8.90	1,260	1,246	99
IA	440	450	102	8.90	9.00	3,916	4,050	103
KS	87	83	95	8.80	8.80	766	730	95
MI	48	46	96	9.20	9.25	442	426	96
MN	285	280	98	9.05	9.30	2,579	2,604	101
MO	170	170	100	9.00	9.05	1,530	1,539	101
NE	175	175	100	8.90	9.05	1,558	1,584	102
NC	560	560	100	9.15	9.10	5,124	5,096	99
OH	75	77	103	8.90	9.10	668	701	105
OK	195	200	103	9.00	8.90	1,755	1,780	101
PA	46	47	102	9.20	9.40	423	442	104
SD	68	68	100	9.30	9.40	632	639	101
TX	56	44	79	9.05	9.10	507	400	79
WI	24	25	104	8.85	8.70	212	218	103
Oth Sts ³	213	205	96	9.06	9.14	1,929	1,876	97
US	2,905	2,898	100	9.01	9.07	26,162	26,273	100

¹ May not add due to rounding.

² Number of pigs born June-August that were still on hand September 1, or had been sold.

³ Individual State estimates not available for the 33 other States.

**Farrowings: Number of Sows, Pigs per Litter, and Pig Crop
by State and United States, September-November 2003-2005¹**

State	Sows Farrowing				Pigs per Litter		Pig Crop ²		
	2003	2004	2005 ³		2003	2004	2003	2004	
			Number	as % of 2004				Number	as % of 2003
	<i>1,000 Head</i>	<i>1,000 Head</i>	<i>1,000 Head</i>	<i>Percent</i>	<i>Number</i>	<i>Number</i>	<i>1,000 Head</i>	<i>1,000 Head</i>	<i>Percent</i>
AR	35	42	44	105	9.50	9.50	333	399	120
CO	70	73	81	111	8.40	8.45	588	617	105
IL	205	210	205	98	8.85	8.85	1,814	1,859	102
IN	145	135	135	100	8.85	8.85	1,283	1,195	93
IA	440	460	460	100	8.80	8.90	3,872	4,094	106
KS	81	83	84	101	8.70	8.80	705	730	104
MI	51	46	49	107	8.80	9.20	449	423	94
MN	280	285	280	98	9.00	9.10	2,520	2,594	103
MO	175	170	170	100	9.10	8.95	1,593	1,522	96
NE	185	170	175	103	9.00	9.00	1,665	1,530	92
NC	540	550	540	98	9.10	9.00	4,914	4,950	101
OH	74	77	80	104	8.80	9.00	651	693	106
OK	185	190	190	100	8.70	8.90	1,610	1,691	105
PA	51	49	46	94	9.50	9.50	485	466	96
SD	70	71	72	101	9.10	9.20	637	653	103
TX	33	46	46	100	8.20	8.95	271	412	152
WI	26	25	24	96	8.70	8.80	226	220	97
Oth Sts ⁴	210	206	207	100	8.93	8.91	1,872	1,833	98
US	2,856	2,888	2,888	100	8.93	8.96	25,488	25,881	102

¹ May not add due to rounding.

² Number of pigs born September-November that were still on hand December 1, or had been sold.

³ Intentions.

⁴ Individual State estimates not available for the 33 other States.

**Monthly Farrowings: Number of Sows, Pigs per Litter, and Pig Crop,
United States, December-November 2004-2005^{1 2}**

Month	Sows Farrowing		Pigs per Litter		Pig Crop	
	2004	2005	2004	2005	2004	2005
	<i>1,000 Head</i>	<i>1,000 Head</i>	<i>Number</i>	<i>Number</i>	<i>1,000 Head</i>	<i>1,000 Head</i>
Dec ¹	935	938	8.84	8.89	8,265	8,339
Jan	954	951	8.86	8.94	8,448	8,501
Feb	947	946	8.86	8.99	8,392	8,506
Mar	958	959	8.89	9.01	8,515	8,641
Apr	957	958	8.93	9.01	8,550	8,631
May	955	953	8.97	9.04	8,568	8,612
Jun	978	964	8.99	9.06	8,792	8,734
Jul	970	973	9.00	9.04	8,730	8,800
Aug	957	961	9.03	9.09	8,640	8,739
Sep	981		8.94		8,771	
Oct	961		8.96		8,611	
Nov	946		8.98		8,499	
Total	11,498		8.94		102,780	

¹ December preceding year.

² Monthly values may not add to quarterly or annual totals due to rounding.

Reliability of September 1 Hogs and Pigs Estimates

Survey Procedures: A random sample of roughly 10,600 U.S. producers was surveyed to provide data for these estimates. Survey procedures ensured that all hog and pig producers, regardless of size, had a chance to be included in the survey. Large producers were sampled more heavily than small operations. During the first half of September data were collected from about 8,700 operations, 82 percent of the total sample. The data collected was received by mail, telephone, and face-to-face personal interviews. Regardless of when operations responded, they were asked to report inventories as of September 1.

Estimation Procedures: These hogs and pigs estimates were prepared by the Agricultural Statistics Board after reviewing recommendations and analysis submitted by each field office. National and State survey data were reviewed for reasonableness with each other and with estimates from past years using a balance sheet. The balance sheet begins with the previous inventory estimate, adds the estimates of births and imports, and subtracts the estimates of slaughter, exports, and deaths. This indicated ending inventory level is compared to the Agricultural Statistics Board estimate for reasonableness.

Revision Policy: Revisions to previous estimates are made to improve quarter to quarter relationships. Estimates for the previous four quarters are subject to revision when current estimates are made. In December, estimates for all quarters of the current and previous year are reviewed. The reviews are primarily based on hog check-off receipts and slaughter. Estimates will also be reviewed after data from the Department of Agriculture five-year census of agriculture are available. No revisions will be made after that date.

Reliability: Since all operations raising hogs are not included in the sample, survey estimates are subject to sampling variability. Survey results are also subject to non-sampling errors such as omissions, duplication, and mistakes in reporting, recording, and processing the data. The affects of these errors cannot be measured directly. They are minimized through rigid quality controls in the data collection process and through a careful review of all reported data for consistency and reasonableness.

To assist users in evaluating the reliability of the estimates in this report, the "**Root Mean Square Error**" is shown for selected items in the following table. The "Root Mean Square Error" is a statistical measure based on past performance and is computed using the difference between first and final estimates. The "Root Mean Square Error" for hog inventory estimates over the past 20 quarters is 1.2 percent. This means that chances are 9 out of 10 that the final estimate will not be above or below the current estimate of 61.5 million head by more than 1.2 percent. Chances are 9 out of 10 that the difference will not exceed 2.1 percent.

Reliability of September 1 Hog Estimates ¹

Item	Root Mean Square Error	90% Confidence Level		Difference Between First and Latest Estimates			Quarters	
				Average	Smallest	Largest	First Above Latest	First Below Latest
				<i>1,000 Head</i>	<i>1,000 Head</i>	<i>1,000 Head</i>	<i>Number</i>	<i>Number</i>
All Hogs & Pigs	<i>Percent</i> 1.2	<i>Percent</i> 2.0	<i>1,000 Head</i> 1,210	<i>1,000 Head</i> 600	<i>1,000 Head</i> 76	<i>1,000 Head</i> 1,386	<i>Number</i> 6	<i>Number</i> 14
Pig Crop	1.6	2.8	715	315	0	926	5	14
Expected Farrowings								
Next Quarter	1.8	3.2	91	40	0	158	9	11
Following Quarter	2.1	3.6	100	45	2	146	10	10

¹ Based on quarterly records for the past 20 quarters.

Index

Page

Farrowings: Number of Sows, Pig Crop, and Pigs per Litter, United States	2
Farrowings: Number of Sows, Pigs per Litter, and Pig Crop by State and United States, December-February	13
Farrowings: Number of Sows, Pigs per Litter, and Pig Crop by State and United States, June-August	15
Farrowings: Number of Sows, Pigs per Litter, and Pig Crop by State and United States, March-May	14
Farrowings: Number of Sows, Pigs per Litter, and Pig Crop by State and United States, September-November	16
Hogs and Pigs: Breeding, Market, and Total Inventory by State and United States, December 1	11
Hogs and Pigs: Breeding, Market, and Total Inventory by State and United States, June 1	7
Hogs and Pigs: Breeding, Market, and Total Inventory by State and United States, March 1	5
Hogs and Pigs: Breeding, Market, and Total Inventory by State and United States, September 1	9
Hogs and Pigs: Inventory Number by Class, Weight Group, and Quarter, United States	1
Market Hogs and Pigs: Inventory Number by Weight Group, State, and United States, December 1	12
Market Hogs and Pigs: Inventory Number by Weight Group, State, and United States, June 1	8
Market Hogs and Pigs: Inventory Number by Weight Group, State, and United States, March 1	6
Market Hogs and Pigs: Inventory Number by Weight Group, State, and United States, September 1	10
Monthly Farrowings: Number of Sows, Pigs per Litter, and Pig Crop, United States, December-November	17
Pigs per Litter: By Size of Operation, United States	2
Reliability of Hogs and Pigs Estimates	18

ACCESS TO REPORTS!!

For your convenience, there are several ways to obtain NASS reports, data products, and services:

INTERNET ACCESS

All NASS reports are available free of charge on the worldwide Internet. For access, connect to the Internet and go to the NASS Home Page at: www.usda.gov/nass/. Select "Today's Reports" or Publications and then Reports Calendar or Publications and then Search, by Title or Subject.

E-MAIL SUBSCRIPTION

All NASS reports are available by subscription free of charge direct to your e-mail address. Starting with the NASS Home Page at www.usda.gov/nass/, click on **Publications**, then click on the **Subscribe by E-mail** button which takes you to the page describing e-mail delivery of reports. Finally, click on **Go to the Subscription Page** and follow the instructions.

PRINTED REPORTS OR DATA PRODUCTS

CALL OUR TOLL-FREE ORDER DESK: 800-999-6779 (U.S. and Canada)
Other areas, please call 703-605-6220 FAX: 703-605-6900
(Visa, MasterCard, check, or money order acceptable for payment.)

ASSISTANCE

For **assistance** with general agricultural statistics or further information about NASS or its products or services, contact the **Agricultural Statistics Hotline** at **800-727-9540**, 7:30 a.m. to 4:00 p.m. ET, or e-mail: nass@nass.usda.gov.

The U.S. Department of Agriculture (USDA) prohibits discrimination in all its programs and activities on the basis of race, color, national origin, age, disability, and where applicable, sex, marital status, familial status, parental status, religion, sexual orientation, genetic information, political beliefs, reprisal, or because all or part of an individual's income is derived from any public assistance program. (Not all prohibited bases apply to all programs.) Persons with disabilities who require alternative means for communication of program information (Braille, large print, audiotape, etc.) should contact USDA's TARGET Center at (202) 720-2600 (voice and TDD).

To file a complaint of discrimination, write to USDA, Director, Office of Civil Rights, 1400 Independence Avenue, S.W., Washington, D.C. 20250-9410, or call (800) 795-3272 (voice) or (202) 720-6382 (TDD). USDA is an equal opportunity provider and employer.

USDA Data Users' Meeting

October 17, 2005

Embassy Suites at O'Hare

Chicago, Illinois

(847) 678-4000

The USDA's National Agricultural Statistics Service will be organizing an open forum for data users. The purpose will be to provide updates on pending changes in the various statistical and information programs and seek comments and input from data users. Other USDA agencies to be represented will include the Agricultural Marketing Service, the Economic Research Service, the Foreign Agricultural Service, and World Agricultural Outlook Board. The Foreign Trade Division from the Census Bureau will also be included in the meeting.

For registration details or additional information for the Data Users' Meeting, see the NASS homepage at www.usda.gov/nass/ or contact Lynda Ford (NASS) at (202) 720-3896 or at lynda_ford@nass.usda.gov.

This Data Users' Meeting precedes an Industry Outlook meeting that will be held at the same location on October 18, 2005. The Outlook meeting brings together analysts from various commodity sectors to discuss the outlook situation. For more information about the outlook meeting and to register contact Jim Robb (Livestock and Marketing Information Center) at (720) 544-2941 or at robb@lmic.info.