



NASS

FACT FINDERS FOR AGRICULTURE
UNITED STATES DEPARTMENT OF AGRICULTURE

Washington, D.C.

Quarterly Hogs and Pigs

Released December 28, 2005, by the National Agricultural Statistics Service (NASS), Agricultural Statistics Board, U.S. Department of Agriculture. For information on *Quarterly Hogs and Pigs* call Bruce Boess at 202-720-3106, office hours 7:30 a.m. to 4:00 p.m. ET.

U.S. Hog Inventory Up Slightly

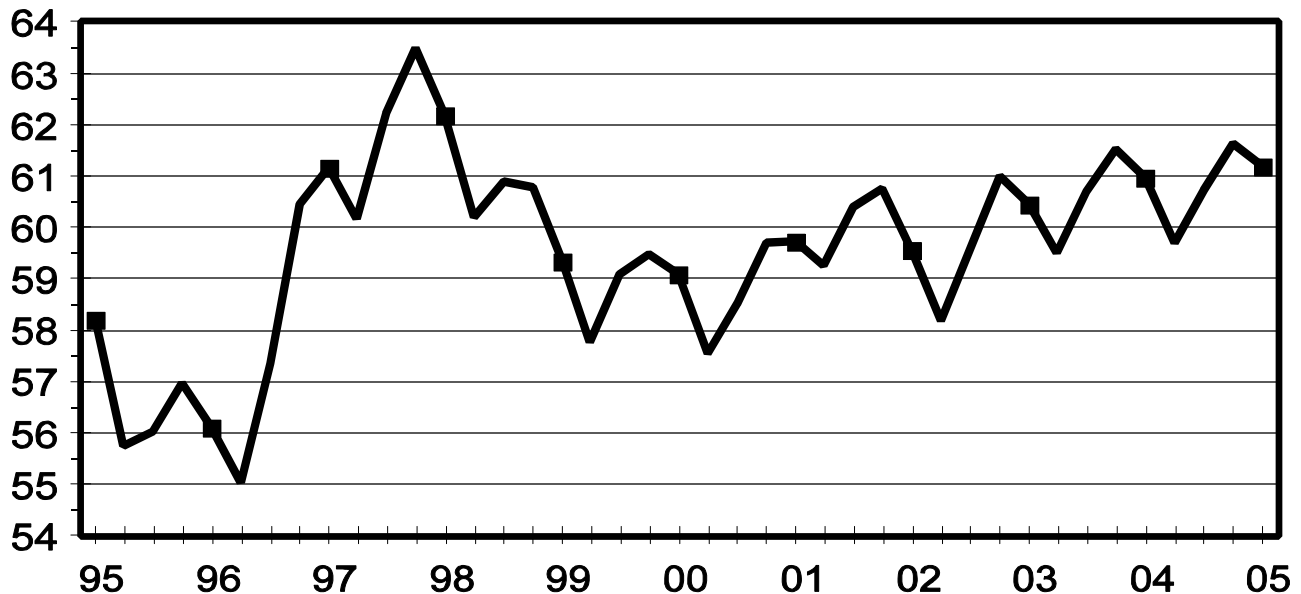
U.S. inventory of all hogs and pigs on December 1, 2005 was 61.2 million head. This was up slightly from December 1, 2004, but down 1 percent from September 1, 2005.

Breeding inventory, at 6.01 million head, was up 1 percent from last year and last quarter. **Market hog inventory**, at 55.2 million head, was up slightly from last year but down 1 percent from last quarter.

The September-November 2005 U.S. pig crop, at 26.1 million head, was up 1 percent from 2004 and up 2 percent from 2003. Sows farrowing during this period totaled 2.89 million head, unchanged from last year. The sows farrowed during this quarter represented 48 percent of the breeding herd. The average pigs saved per litter was 9.03 for the September-November 2005 period, compared to 8.96 last year. Pigs saved per litter by size of operation ranged from 7.50 for operations with 1-99 hogs and pigs to 9.10 for operations with more than 5,000 hogs and pigs.

U.S. Quarterly Hogs and Pigs Inventory December 1

Million Head



U.S. hog producers intend to have 2.88 million sows farrow during the December 2005-February 2006 quarter, up 1 percent from the actual farrowings during the same period in both 2005 and 2004. Intended farrowings for March-May 2006, at 2.89 million sows, are up slightly from 2005 and up 1 percent from 2004.

The total number of hogs under contract, owned by operations with over 5,000 head, but raised by contractees, accounted for 39 percent of the total U.S. hog inventory, up from 38 percent from last year.


Revisions

All inventory and pig crop estimates for March 2004 through September 2005 were reviewed using final pig crop, official slaughter, death loss, and updated import and export data. Based on the findings of this review, small adjustments of less than one-half of one percent were made to the June 2005 total inventory, September 2005 total inventory and to the March-May 2005 pig crop.

This report was approved on December 28, 2005.



Acting Secretary of
Agriculture
Charles F. Conner



Agricultural Statistics Board
Chairperson
Carol C. House

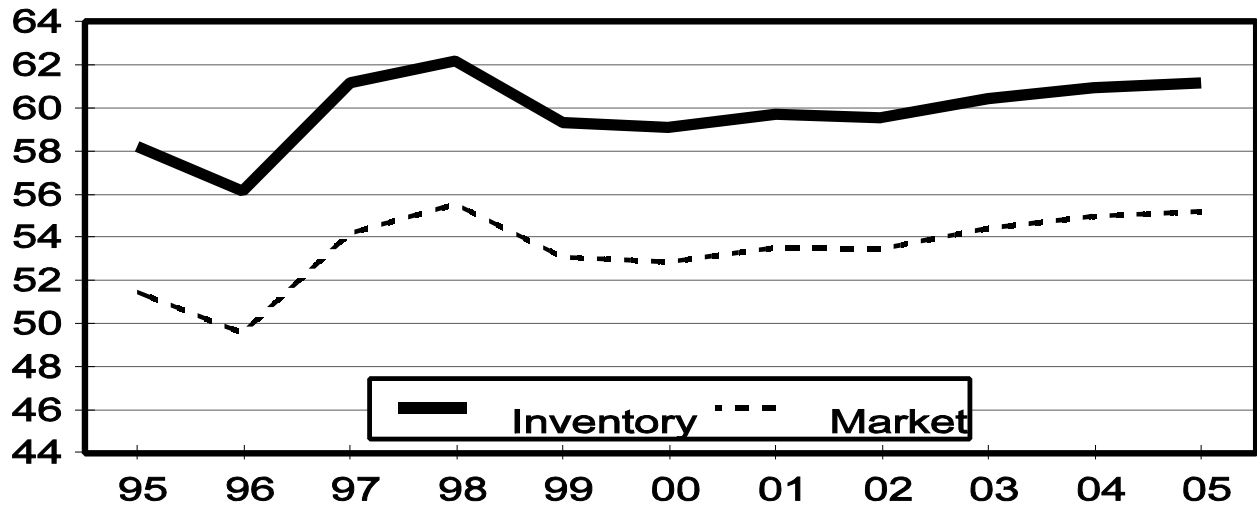
Contents

Page

Quarterly U.S. Inventory by Class and Weight Group, 2003-2005	1
Quarterly U.S. Sows Farrowed, Pig Crop, and Pigs per Litter, 2003-2006	2
Hogs and Pigs: Inventory by State and U.S., 2004-2005	
December 1	5
March 1	7
June 1	9
September 1	11
Farrowings: Number of Sows, Pigs per Litter, Pig Crop by State and U.S., 2004-2006	
December-November	13
December-February	14
March-May	15
June-August	16
September-November	17
Monthly U.S. Farrowings, December-November 2004-2005	18
Reliability Statement	19
Index	21

U.S. Hog Inventory & Market Hogs December 1

Million Head



**Hogs and Pigs: Inventory Number by Class, Weight Group,
and Quarter, United States, 2003-2005 ¹**

Item	2003	2004	2005	2005 as % of	
				2003	2004
	<i>1,000 Head</i>	<i>1,000 Head</i>	<i>1,000 Head</i>	<i>Percent</i>	<i>Percent</i>
March 1 Inventory					
All Hogs and Pigs	58,183	59,520	59,699	103	100
Kept for Breeding	6,027	5,961	5,941	99	100
Market	52,156	53,558	53,757	103	100
Market Hogs and Pigs by Weight Groups					
Under 60 Pounds	19,086	19,823	19,667	103	99
60-119 Pounds	12,639	12,954	13,087	104	101
120-179 Pounds	10,915	11,205	11,360	104	101
180 Pounds and Over	9,516	9,578	9,644	101	101
June 1 Inventory					
All Hogs and Pigs	59,602	60,698	60,732	102	100
Kept for Breeding	6,026	5,937	5,977	99	101
Market	53,576	54,760	54,754	102	100
Market Hogs and Pigs by Weight Groups					
Under 60 Pounds	20,433	20,292	20,423	100	101
60-119 Pounds	12,952	13,500	13,376	103	99
120-179 Pounds	10,828	11,256	11,143	103	99
180 Pounds and Over	9,363	9,714	9,813	105	101
September 1 Inventory					
All Hogs and Pigs	61,009	61,519	61,636	101	100
Kept for Breeding	5,938	5,962	5,972	101	100
Market	55,071	55,556	55,663	101	100
Market Hogs and Pigs by Weight Groups					
Under 60 Pounds	20,438	20,729	20,634	101	100
60-119 Pounds	13,739	13,613	13,796	100	101
120-179 Pounds	11,384	11,235	11,404	100	102
180 Pounds and Over	9,510	9,981	9,830	103	98
December 1 Inventory					
All Hogs and Pigs	60,444	60,975	61,197	101	100
Kept for Breeding	6,009	5,969	6,011	100	101
Market	54,434	55,005	55,186	101	100
Market Hogs and Pigs by Weight Groups					
Under 60 Pounds	19,778	19,980	19,955	101	100
60-119 Pounds	13,238	13,439	13,552	102	101
120-179 Pounds	11,109	11,186	11,266	101	101
180 Pounds and Over	10,311	10,401	10,414	101	100

¹ May not add due to rounding.

**Farrowings: Number of Sows, Pig Crop, and Pigs per Litter,
United States, 2003-2006 ¹**

Item	2003	2004	2005	2006	2005 as % of		2006 as Percent of 2005
					2003	2004	
	<i>1,000 Head</i>	<i>1,000 Head</i>	<i>1,000 Head</i>	<i>1,000 Head</i>	<i>Percent</i>	<i>Percent</i>	<i>Percent</i>
Sows Farrowing							
Dec-Feb ^{2,3}	2,769	2,836	2,835	2,877	102	100	101
Mar-May ³	2,886	2,870	2,882	2,890	100	100	100
Dec-May ^{2,3}	5,655	5,706	5,716	5,767	101	100	101
Jun-Aug	2,918	2,905	2,899		99	100	
Sep-Nov	2,856	2,888	2,888		101	100	
Jun-Nov	5,773	5,793	5,787		100	100	
Pig Crop							
Dec-Feb ²	24,400	25,105	25,343		104	101	
Mar-May	25,629	25,633	25,986		101	101	
Dec-May ²	50,029	50,737	51,330		103	101	
Jun-Aug	25,974	26,162	26,276		101	100	
Sep-Nov	25,488	25,881	26,080		102	101	
Jun-Nov	51,462	52,043	52,355		102	101	
	<i>Number</i>	<i>Number</i>	<i>Number</i>	<i>Number</i>	<i>Percent</i>	<i>Percent</i>	<i>Percent</i>
Pigs per Litter							
Dec-Feb ²	8.81	8.85	8.94		101	101	
Mar-May	8.88	8.93	9.02		102	101	
Dec-May ²	8.85	8.89	8.98		102	101	
Jun-Aug	8.90	9.01	9.06		102	101	
Sep-Nov	8.93	8.96	9.03		101	101	
Jun-Nov	8.91	8.98	9.05		101	101	

¹ May not add due to rounding.

² December preceding year.

³ Intentions for 2006.

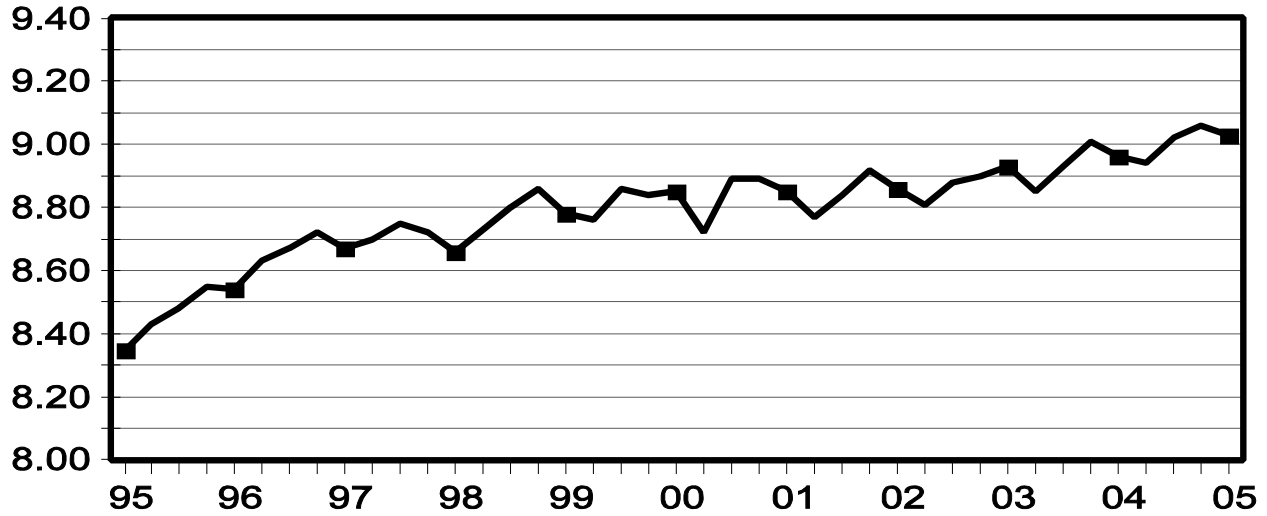
Pigs per Litter: By Size of Operation, United States, 2004-2005

Pig Crop	Pigs per Litter on Operations Having					
	1-99 Head	100-499 Head	500-999 Head	1,000-1,999 Head	2,000-4,999 Head	5,000+ Head
	<i>Number</i>	<i>Number</i>	<i>Number</i>	<i>Number</i>	<i>Number</i>	<i>Number</i>
2004						
Dec-Feb ¹	7.60	7.90	8.20	8.60	8.70	9.00
Mar-May	7.70	7.90	8.30	8.70	8.90	9.00
Jun-Aug	7.50	7.80	8.30	8.80	8.90	9.10
Sep-Nov	7.50	7.70	8.20	8.80	8.90	9.10
2005						
Dec-Feb ¹	7.50	7.80	8.30	8.80	8.90	9.00
Mar-May	7.50	7.90	8.30	8.80	9.00	9.10
Jun-Aug	7.60	7.90	8.70	8.80	9.00	9.10
Sep-Nov	7.50	8.00	8.50	8.70	9.00	9.10

¹ December preceding year.

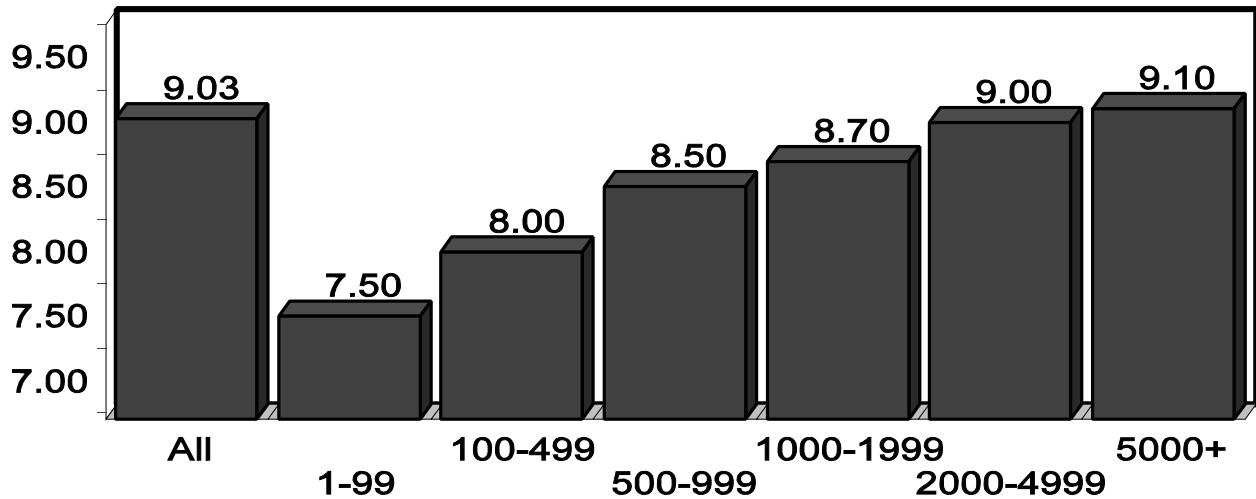
U.S. Quarterly Litter Rate September-November

Number Head



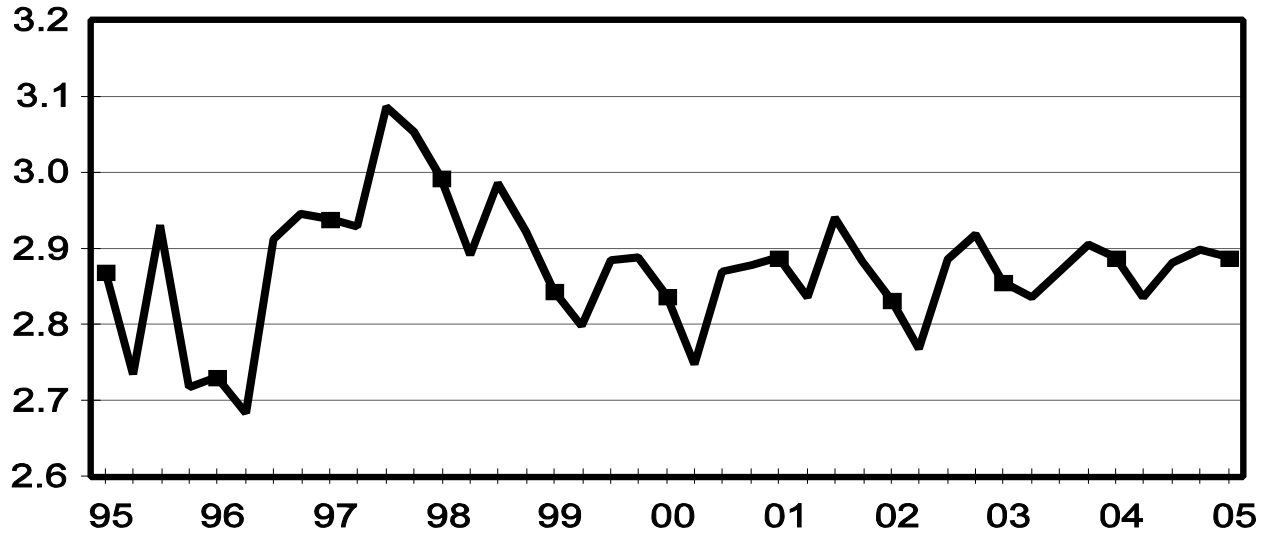
U.S. Pigs per Litter By Size of Operation, September-November 2005

Number Head



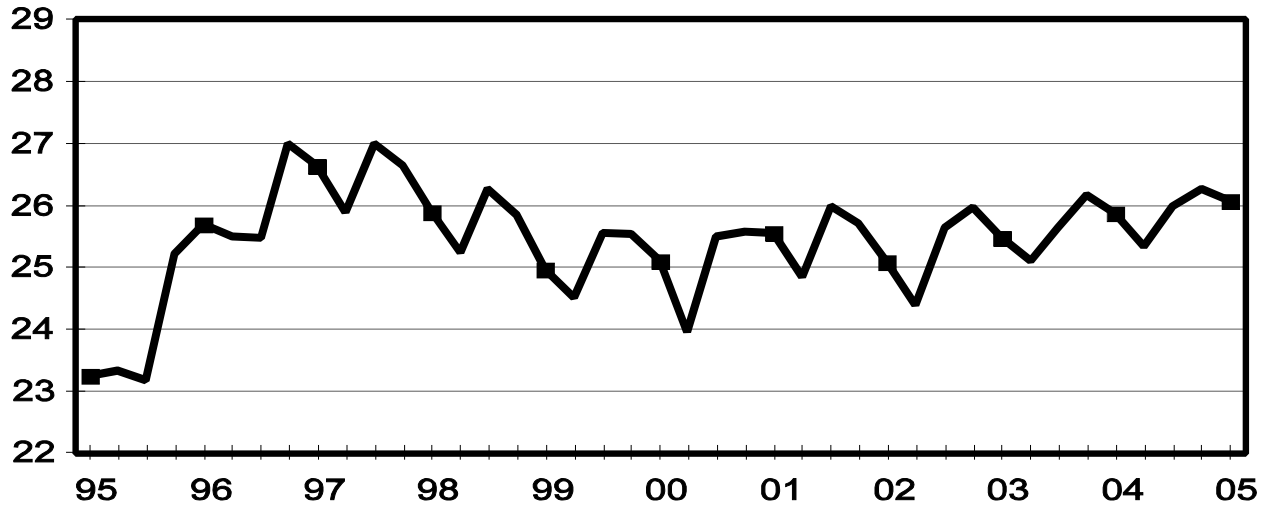
U.S. Quarterly Sows Farrowed September-November

Million Head



U.S. Quarterly Pig Crop September-November

Million Head



**Hogs and Pigs: Breeding, Market, and Total Inventory
by State and United States, December 1, 2004-2005 ¹**

State	Breeding			Market			Total		
	2004	2005		2004	2005		2004	2005	
		Number	as % of 2004		Number	as % of 2004		Number	as % of 2004
	<i>1,000 Head</i>	<i>1,000 Head</i>	<i>Percent</i>	<i>1,000 Head</i>	<i>1,000 Head</i>	<i>Percent</i>	<i>1,000 Head</i>	<i>1,000 Head</i>	<i>Percent</i>
AL	18	17	94	162	143	88	180	160	89
AK	0.3	0.3	100	1.4	1.3	93	1.7	1.6	94
AZ	16	15	94	134	127	95	150	142	95
AR	85	85	100	245	185	76	330	270	82
CA	20	20	100	120	125	104	140	145	104
CO	140	145	104	660	695	105	800	840	105
CT	0.9	0.7	78	3.3	2.8	85	4.2	3.5	83
DE	3.0	3.5	117	12.0	13.0	108	15.0	16.5	110
FL	4.0	4.0	100	16.0	16.0	100	20.0	20.0	100
GA	42	43	102	233	227	97	275	270	98
HI	5.2	5.0	96	16.8	14.0	83	22.0	19.0	86
ID	3.0	4.0	133	18.0	17.0	94	21.0	21.0	100
IL	420	430	102	3,680	3,570	97	4,100	4,000	98
IN	290	310	107	2,910	2,890	99	3,200	3,200	100
IA	1,070	1,070	100	15,230	15,330	101	16,300	16,400	101
KS	155	160	103	1,555	1,620	104	1,710	1,780	104
KY	40	40	100	310	330	106	350	370	106
LA	2.0	2.0	100	14.0	12.0	86	16.0	14.0	88
ME	1.3	1.2	92	3.7	3.8	103	5.0	5.0	100
MD	4.0	5.0	125	22.0	30.0	136	26.0	35.0	135
MA	1.5	2.0	133	10.5	11.0	105	12.0	13.0	108
MI	110	100	91	840	850	101	950	950	100
MN	600	590	98	5,900	6,010	102	6,500	6,600	102
MS	35	39	111	280	336	120	315	375	119
MO	340	345	101	2,560	2,405	94	2,900	2,750	95
MT	17	18	106	148	157	106	165	175	106
NE	355	350	99	2,495	2,500	100	2,850	2,850	100
NV	1.0	0.5	50	4.5	3.5	78	5.5	4.0	73
NH	0.9	0.5	56	2.7	2.7	100	3.6	3.2	89
NJ	1.0	1.0	100	10.0	8.0	80	11.0	9.0	82
NM	0.3	0.2	67	2.2	1.8	82	2.5	2.0	80
NY	12.0	10.0	83	72.0	73.0	101	84.0	83.0	99
NC	1,020	1,010	99	8,880	8,790	99	9,900	9,800	99
ND	29	31	107	140	126	90	169	157	93
OH	155	165	106	1,295	1,385	107	1,450	1,550	107
OK	360	360	100	2,030	2,010	99	2,390	2,370	99
OR	5.0	4.0	80	22.0	19.0	86	27.0	23.0	85
PA	115	100	87	965	990	103	1,080	1,090	101
RI	0.5	0.5	100	1.5	1.3	87	2.0	1.8	90
SC	30	30	100	270	285	106	300	315	105
SD	140	165	118	1,200	1,315	110	1,340	1,480	110
TN	23	20	87	192	170	89	215	190	88
TX	100	100	100	890	830	93	990	930	94
UT	92	92	100	598	598	100	690	690	100
VT	0.4	0.4	100	1.6	1.9	119	2.0	2.3	115
VA	30	35	117	345	455	132	375	490	131
WA	4.0	5.0	125	22.0	25.0	114	26.0	30.0	115
WV	2.0	2.0	100	8.0	6.0	75	10.0	8.0	80
WI	50	55	110	380	375	99	430	430	100
WY	20	19	95	94	94	100	114	113	99
US	5,969	6,011	101	55,005	55,186	100	60,975	61,197	100

¹ May not add due to rounding.

**Market Hogs and Pigs: Inventory Number by Weight Group,
State, and United States, December 1, 2004-2005 ¹**

State	Under 60 Lbs.		60-119 Lbs.		120-179 Lbs.		180 Lbs. and Over	
	2004	2005	2004	2005	2004	2005	2004	2005
	<i>1,000 Head</i>	<i>1,000 Head</i>	<i>1,000 Head</i>	<i>1,000 Head</i>	<i>1,000 Head</i>	<i>1,000 Head</i>	<i>1,000 Head</i>	<i>1,000 Head</i>
AL	69	60	32	30	30	27	31	26
AK	1.0	0.4	0.2	0.6	0.1	0.2	0.1	0.1
AZ	47	46	29	27	29	27	29	27
AR	130	130	40	20	35	15	40	20
CA	32	40	32	35	26	25	30	25
CO	355	390	100	95	75	85	130	125
CT	1.6	1.5	0.6	0.7	0.5	0.4	0.6	0.2
DE	5.0	5.0	2.5	2.5	2.0	3.0	2.5	2.5
FL	8.0	8.0	3.0	4.0	3.0	2.0	2.0	2.0
GA	98	97	55	51	43	40	37	39
HI	7.6	6.0	4.4	3.9	3.2	2.4	1.6	1.7
ID	5.0	6.0	5.0	5.0	5.0	3.0	3.0	3.0
IL	1,410	1,300	830	860	770	740	670	670
IN	1,010	1,010	750	730	600	560	550	590
IA	4,580	4,530	4,130	4,160	3,340	3,500	3,180	3,140
KS	460	570	330	320	340	310	425	420
KY	100	105	80	85	70	75	60	65
LA	5.0	4.0	4.0	3.0	2.0	2.0	3.0	3.0
ME	2.2	2.1	0.8	0.8	0.4	0.4	0.3	0.5
MD	7.0	12.0	5.0	3.0	5.0	7.0	5.0	8.0
MA	4.0	5.0	3.1	2.6	1.8	1.7	1.6	1.7
MI	330	315	195	205	160	170	155	160
MN	2,250	2,320	1,420	1,460	1,250	1,200	980	1,030
MS	67	83	76	85	70	83	67	85
MO	1,200	1,155	530	480	480	450	350	320
MT	48	50	37	40	33	34	30	33
NE	970	980	650	660	470	470	405	390
NV	1.3	0.9	1.2	1.0	1.0	0.9	1.0	0.7
NH	0.9	1.0	0.8	0.4	0.5	0.6	0.5	0.7
NJ	1.0	1.0	2.0	2.0	2.0	2.0	5.0	3.0
NM	0.5	0.5	0.6	0.5	0.6	0.5	0.5	0.3
NY	26.0	24.0	18.0	16.0	13.0	17.0	15.0	16.0
NC	3,520	3,450	2,150	2,130	1,700	1,720	1,510	1,490
ND	51	50	34	30	28	23	27	23
OH	535	540	310	340	270	295	180	210
OK	970	920	340	330	230	240	490	520
OR	7.0	6.0	7.0	5.0	4.0	4.0	4.0	4.0
PA	280	310	275	280	215	215	195	185
RI	0.4	0.4	0.4	0.4	0.2	0.3	0.5	0.2
SC	65	60	70	85	60	70	75	70
SD	410	440	300	335	260	290	230	250
TN	72	60	45	40	38	35	37	35
TX	300	270	200	195	205	180	185	185
UT	250	260	131	146	131	136	86	56
VT	0.6	0.9	0.4	0.4	0.2	0.2	0.4	0.4
VA	115	140	90	130	75	100	65	85
WA	7.0	9.0	6.0	7.0	5.0	5.0	4.0	4.0
WV	2.0	2.0	1.0	1.0	1.0	1.0	4.0	2.0
WI	135	150	90	85	80	75	75	65
WY	28	28	22	23	22	22	22	21
US	19,980	19,955	13,439	13,552	11,186	11,266	10,401	10,414

¹ Weight groups may not add to Market due to rounding.

**Hogs and Pigs: Breeding, Market, and Total Inventory
by State and United States, March 1, 2004-2005 ¹**

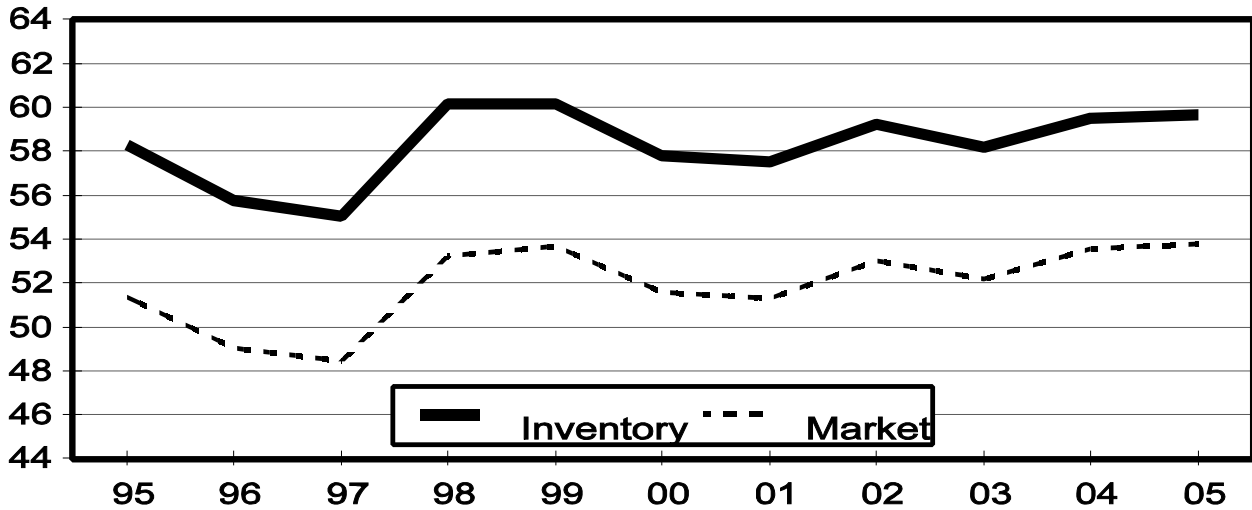
State	Breeding			Market			Total		
	2004	2005		2004	2005		2004	2005	
		Number	as % of 2004		Number	as % of 2004		Number	as % of 2004
	<i>1,000 Head</i>	<i>1,000 Head</i>	<i>Percent</i>	<i>1,000 Head</i>	<i>1,000 Head</i>	<i>Percent</i>	<i>1,000 Head</i>	<i>1,000 Head</i>	<i>Percent</i>
AR	85	85	100	230	245	107	315	330	105
CO	140	140	100	550	670	122	690	810	117
IL	410	430	105	3,440	3,570	104	3,850	4,000	104
IN	300	290	97	2,850	2,710	95	3,150	3,000	95
IA	1,040	1,080	104	14,460	15,020	104	15,500	16,100	104
KS	170	155	91	1,550	1,525	98	1,720	1,680	98
MI	100	100	100	830	820	99	930	920	99
MN	600	590	98	5,900	5,710	97	6,500	6,300	97
MO	330	330	100	2,570	2,520	98	2,900	2,850	98
NE	360	355	99	2,490	2,395	96	2,850	2,750	96
NC	1,020	1,010	99	8,880	8,690	98	9,900	9,700	98
OH	160	160	100	1,360	1,340	99	1,520	1,500	99
OK	350	360	103	2,000	2,020	101	2,350	2,380	101
PA	120	105	88	910	995	109	1,030	1,100	107
SD	145	145	100	1,105	1,215	110	1,250	1,360	109
TX	110	95	86	810	815	101	920	910	99
WI	55	50	91	395	380	96	450	430	96
Oth Sts ²	466	461	99	3,228	3,117	97	3,695	3,579	97
US	5,961	5,941	100	53,558	53,757	100	59,520	59,699	100

¹ May not add due to rounding.

² Individual State estimates not available for the 33 Other States.

U.S. Hog Inventory & Market Hogs March 1

Million Head



**Market Hogs and Pigs: Inventory Number by Weight Group,
State, and United States, March 1, 2004-2005 ¹**

State	Under 60 Lbs.		60-119 Lbs.		120-179 Lbs.		180 Lbs. and Over	
	2004	2005	2004	2005	2004	2005	2004	2005
	<i>1,000 Head</i>	<i>1,000 Head</i>	<i>1,000 Head</i>	<i>1,000 Head</i>	<i>1,000 Head</i>	<i>1,000 Head</i>	<i>1,000 Head</i>	<i>1,000 Head</i>
AR	135	145	30	35	30	30	35	35
CO	315	365	60	115	65	85	110	105
IL	1,260	1,360	820	840	750	760	610	610
IN	1,060	1,000	660	650	620	570	510	490
IA	4,510	4,330	4,000	4,230	3,250	3,490	2,700	2,970
KS	530	540	285	255	310	280	425	450
MI	300	325	205	190	175	160	150	145
MN	2,250	2,230	1,410	1,390	1,280	1,250	960	840
MO	1,270	1,190	510	520	470	480	320	330
NE	980	970	640	600	470	470	400	355
NC	3,500	3,410	2,180	2,030	1,800	1,830	1,400	1,420
OH	555	550	315	310	290	300	200	180
OK	940	960	310	330	250	260	500	470
PA	300	290	240	290	210	230	160	185
SD	385	430	245	295	265	270	210	220
TX	265	295	180	190	195	160	170	170
WI	155	145	90	90	80	80	70	65
Oth Sts ²	1,113	1,132	774	727	695	655	648	604
US	19,823	19,667	12,954	13,087	11,205	11,360	9,578	9,644

¹ Weight groups may not add to Market due to rounding.

² Individual State estimates not available for the 33 Other States.

**Hogs and Pigs: Breeding, Market, and Total Inventory
by State and United States, June 1, 2004-2005¹**

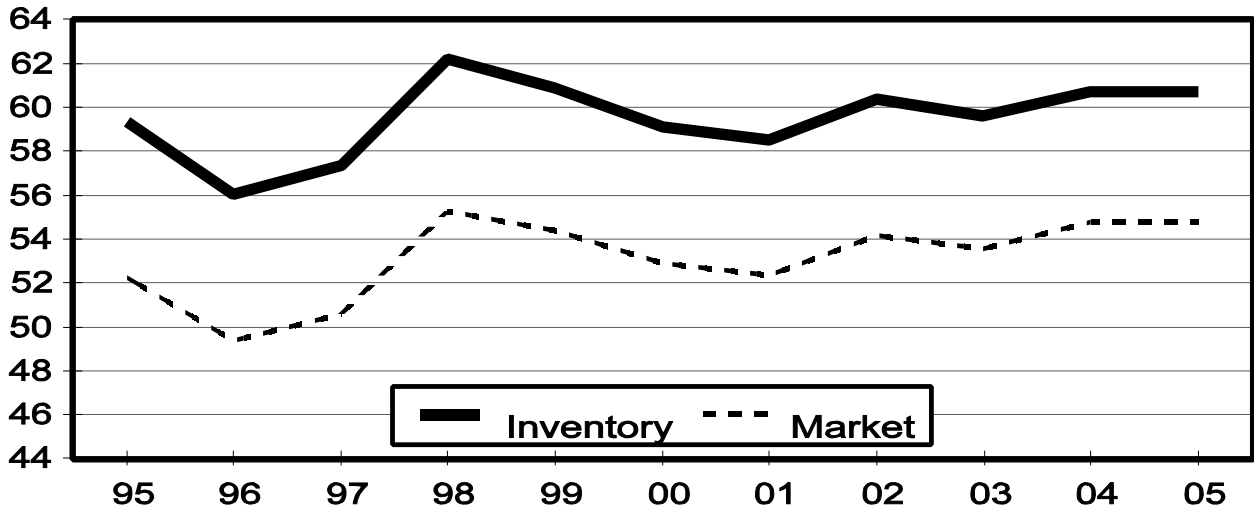
State	Breeding			Market			Total		
	2004	2005		2004	2005		2004	2005	
		Number	as % of 2004		Number	as % of 2004		Number	as % of 2004
	<i>1,000 Head</i>	<i>1,000 Head</i>	<i>Percent</i>	<i>1,000 Head</i>	<i>1,000 Head</i>	<i>Percent</i>	<i>1,000 Head</i>	<i>1,000 Head</i>	<i>Percent</i>
AR	85	85	100	250	205	82	335	290	87
CO	140	140	100	610	640	105	750	780	104
IL	420	430	102	3,530	3,670	104	3,950	4,100	104
IN	290	300	103	2,860	2,800	98	3,150	3,100	98
IA	1,060	1,070	101	15,040	15,130	101	16,100	16,200	101
KS	165	155	94	1,565	1,535	98	1,730	1,690	98
MI	95	100	105	815	810	99	910	910	100
MN	600	600	100	6,000	6,000	100	6,600	6,600	100
MO	320	340	106	2,630	2,510	95	2,950	2,850	97
NE	360	355	99	2,490	2,445	98	2,850	2,800	98
NC	1,010	1,020	101	9,190	8,880	97	10,200	9,900	97
OH	155	160	103	1,315	1,420	108	1,470	1,580	107
OK	350	360	103	2,100	2,020	96	2,450	2,380	97
PA	110	100	91	900	970	108	1,010	1,070	106
SD	145	145	100	1,085	1,255	116	1,230	1,400	114
TX	110	100	91	780	830	106	890	930	104
WI	50	50	100	390	380	97	440	430	98
Oth Sts ²	472	467	99	3,210	3,254	101	3,683	3,722	101
US	5,937	5,977	101	54,760	54,754	100	60,698	60,732	100

¹ May not add due to rounding.

² Individual State estimates not available for the 33 Other States.

U.S. Hog Inventory & Market Hogs June 1

Million Head



**Market Hogs and Pigs: Inventory Number by Weight Group,
State, and United States, June 1, 2004-2005 ¹**

State	Under 60 Lbs.		60-119 Lbs.		120-179 Lbs.		180 Lbs. and Over	
	2004	2005	2004	2005	2004	2005	2004	2005
	<i>1,000 Head</i>	<i>1,000 Head</i>	<i>1,000 Head</i>	<i>1,000 Head</i>	<i>1,000 Head</i>	<i>1,000 Head</i>	<i>1,000 Head</i>	<i>1,000 Head</i>
AR	145	140	40	20	30	20	35	25
CO	335	355	95	110	80	60	100	115
IL	1,330	1,340	870	900	750	770	580	660
IN	1,040	1,040	660	700	600	550	560	510
IA	4,540	4,600	4,300	4,130	3,350	3,500	2,850	2,900
KS	530	550	330	305	275	280	430	400
MI	300	310	200	200	170	155	145	145
MN	2,380	2,410	1,420	1,440	1,260	1,220	940	930
MO	1,300	1,230	550	480	480	450	300	350
NE	980	960	660	640	460	490	390	355
NC	3,690	3,560	2,200	2,140	1,800	1,720	1,500	1,460
OH	535	580	310	340	290	300	180	200
OK	980	960	330	330	310	230	480	500
PA	310	285	230	290	190	225	170	170
SD	370	465	290	320	250	250	175	220
TX	255	325	165	150	185	160	175	195
WI	150	150	85	90	80	70	75	70
Oth Sts ²	1,122	1,163	765	791	696	693	629	608
US	20,292	20,423	13,500	13,376	11,256	11,143	9,714	9,813

¹ Weight groups may not add to Market due to rounding.

² Individual State estimates not available for the 33 Other States.

**Hogs and Pigs: Breeding, Market, and Total Inventory
by State and United States, September 1, 2004-2005¹**

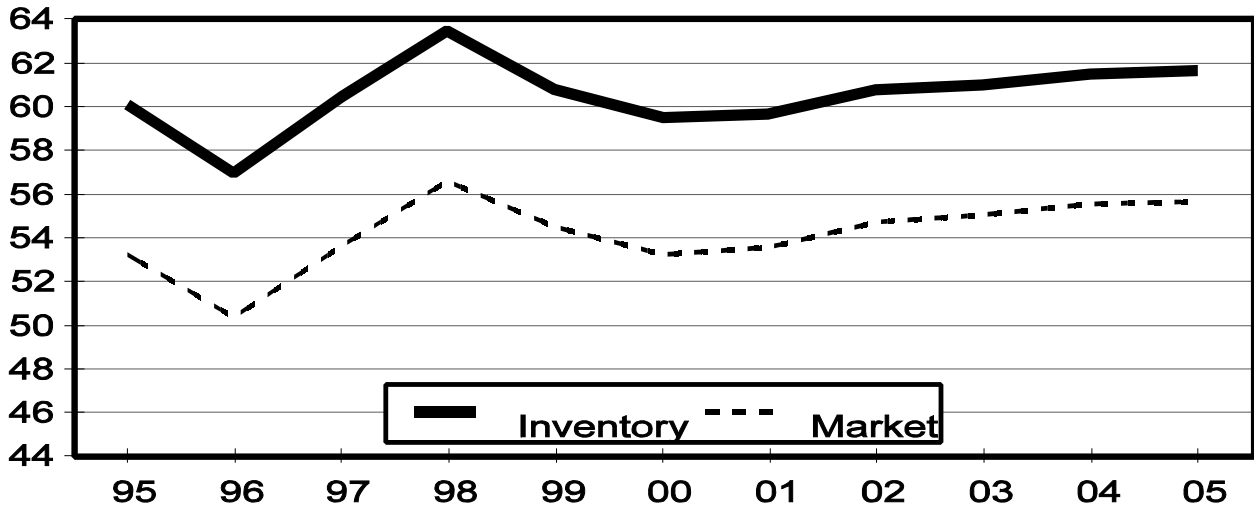
State	Breeding			Market			Total		
	2004	2005		2004	2005		2004	2005	
		Number	as % of 2004		Number	as % of 2004		Number	as % of 2004
	<i>1,000 Head</i>	<i>1,000 Head</i>	<i>Percent</i>	<i>1,000 Head</i>	<i>1,000 Head</i>	<i>Percent</i>	<i>1,000 Head</i>	<i>1,000 Head</i>	<i>Percent</i>
AR	80	85	106	240	200	83	320	285	89
CO	140	145	104	580	705	122	720	850	118
IL	410	420	102	3,590	3,630	101	4,000	4,050	101
IN	300	300	100	2,950	2,750	93	3,250	3,050	94
IA	1,060	1,080	102	15,340	15,420	101	16,400	16,500	101
KS	160	155	97	1,630	1,565	96	1,790	1,720	96
MI	100	100	100	840	820	98	940	920	98
MN	590	600	102	6,010	6,200	103	6,600	6,800	103
MO	330	340	103	2,570	2,510	98	2,900	2,850	98
NE	360	350	97	2,490	2,450	98	2,850	2,800	98
NC	1,030	1,020	99	9,270	9,080	98	10,300	10,100	98
OH	160	160	100	1,350	1,390	103	1,510	1,550	103
OK	360	360	100	2,100	2,050	98	2,460	2,410	98
PA	105	95	90	955	985	103	1,060	1,080	102
SD	140	140	100	1,080	1,230	114	1,220	1,370	112
TX	110	100	91	920	880	96	1,030	980	95
WI	50	50	100	390	370	95	440	420	95
Oth Sts ²	477	472	99	3,251	3,428	105	3,729	3,901	105
US	5,962	5,972	100	55,556	55,663	100	61,519	61,636	100

¹ May not add due to rounding.

² Individual State estimates not available for the 33 Other States.

U.S. Hog Inventory & Market Hogs September 1

Million Head



**Market Hogs and Pigs: Inventory Number by Weight Group,
State, and United States, September 1, 2004-2005 ¹**

State	Under 60 Lbs.		60-119 Lbs.		120-179 Lbs.		180 Lbs. and Over	
	2004	2005	2004	2005	2004	2005	2004	2005
	<i>1,000 Head</i>	<i>1,000 Head</i>	<i>1,000 Head</i>	<i>1,000 Head</i>	<i>1,000 Head</i>	<i>1,000 Head</i>	<i>1,000 Head</i>	<i>1,000 Head</i>
AR	140	145	35	20	35	15	30	20
CO	320	390	85	110	75	85	100	120
IL	1,380	1,380	840	890	770	800	600	560
IN	1,080	1,000	710	720	600	550	560	480
IA	4,740	4,760	4,200	4,320	3,350	3,450	3,050	2,890
KS	550	535	340	355	285	265	455	410
MI	320	310	200	195	170	165	150	150
MN	2,420	2,450	1,440	1,500	1,240	1,320	910	930
MO	1,270	1,180	500	520	450	470	350	340
NE	970	980	660	660	470	460	390	350
NC	3,670	3,650	2,350	2,130	1,850	1,780	1,400	1,520
OH	570	570	330	335	270	290	180	195
OK	1,000	920	370	300	250	270	480	560
PA	290	300	245	270	195	220	225	195
SD	390	430	270	315	240	255	180	230
TX	340	280	185	210	210	195	185	195
WI	150	145	90	90	80	70	70	65
Oth Sts ²	1,129	1,209	763	856	695	744	666	620
US	20,729	20,634	13,613	13,796	11,235	11,404	9,981	9,830

¹ Weight groups may not add to Market due to rounding.

² Individual State estimates not available for the 33 Other States.

**Annual Farrowings: Number of Sows, Pigs per Litter, and Pig Crop
by State and United States, December-November 2004-2005^{1 2}**

State	Sows Farrowing			Pigs per Litter		Pig Crop		
	2004	2005		2004	2005	2004	2005	
		Number	as % of 2004				Number	as % of 2004
	<i>1,000 Head</i>	<i>1,000 Head</i>	<i>Percent</i>	<i>Number</i>	<i>Number</i>	<i>1,000 Head</i>	<i>1,000 Head</i>	<i>Percent</i>
AL	29.0	32.0	110	8.83	8.91	256.0	285.0	111
AK	0.38	0.32	84	8.39	9.41	3.19	3.01	94
AZ	32.0	30.0	94	9.34	9.20	299.0	276.0	92
AR	164	169	103	9.55	9.64	1,566	1,629	104
CA	39.0	32.0	82	9.03	9.56	352.0	306.0	87
CO	288	310	108	8.31	8.74	2,394	2,709	113
CT	0.80	0.70	88	7.60	8.10	6.08	5.67	93
DE	6.00	6.00	100	9.17	9.33	55.00	56.00	102
FL	8.00	8.00	100	7.50	7.25	60.00	58.00	97
GA	91.0	84.0	92	8.75	8.81	796.0	740.0	93
HI	4.30	4.00	93	7.21	7.00	31.00	28.00	90
ID	3.80	3.90	103	8.95	8.72	34.00	34.00	100
IL	840	825	98	8.88	8.90	7,456	7,344	98
IN	555	540	97	8.90	8.89	4,940	4,800	97
IA	1,740	1,785	103	8.82	8.99	15,340	16,043	105
KS	338	330	98	8.78	8.75	2,966	2,887	97
KY	85.0	78.0	92	8.96	8.92	762.0	696.0	91
LA	4.20	3.60	86	7.14	7.50	30.00	27.00	90
ME	1.50	1.60	107	7.10	7.30	10.65	11.68	110
MD	8.00	10.00	125	8.00	8.40	64.00	84.00	131
MA	1.90	2.50	132	7.80	8.08	14.82	20.20	136
MI	183	182	99	9.10	9.12	1,666	1,659	100
MN	1,145	1,125	98	9.04	9.20	10,348	10,351	100
MS	61.5	70.0	114	8.78	8.86	540.0	620.0	115
MO	680	685	101	8.99	9.04	6,112	6,191	101
MT	32.5	33.0	102	9.54	9.67	310.0	319.0	103
NE	695	700	101	8.93	9.04	6,204	6,327	102
NV	0.76	0.66	87	7.83	7.45	5.95	4.92	83
NH	0.80	0.70	88	6.60	8.00	5.28	5.60	106
NJ	1.10	0.40	36	7.00	7.00	7.70	2.80	36
NM	0.40	0.40	100	7.50	8.50	3.00	3.40	113
NY	16.80	14.60	87	9.88	8.90	166.00	130.00	78
NC	2,210	2,200	100	9.05	8.96	20,002	19,720	99
ND	48.0	50.0	104	9.19	9.42	441.0	471.0	107
OH	299	311	104	8.90	9.05	2,662	2,815	106
OK	760	765	101	8.83	8.88	6,709	6,790	101
OR	6.40	5.80	91	7.50	6.72	48.00	39.00	81
PA	198	188	95	8.98	9.46	1,778	1,778	100
RI	0.50	0.50	100	7.50	8.50	3.75	4.25	113
SC	52.0	54.0	104	9.46	9.30	492.0	502.0	102
SD	279	295	106	9.27	9.35	2,587	2,758	107
TN	43.0	40.0	93	8.28	8.58	356.0	343.0	96
TX	195	175	90	8.76	9.15	1,709	1,602	94
UT	142.0	139.0	98	9.30	9.53	1,320.0	1,325.0	100
VT	0.50	0.50	100	7.70	7.70	3.85	3.85	100
VA	59.0	59.0	100	9.42	9.22	556.0	544.0	98
WA	4.80	6.40	133	8.75	8.44	42.00	54.00	129
WV	2.30	2.10	91	7.91	7.00	18.20	14.70	81
WI	99	101	102	8.80	8.72	871	881	101
WY	43.0	44.0	102	8.79	8.73	378.0	384.0	102
US	11,498	11,504	100	8.94	9.01	102,780	103,685	101

¹ December preceding year.

² May not add due to rounding.

**Farrowings: Number of Sows, Pigs per Litter, and Pig Crop
by State and United States, December-February 2004-2006^{1 2}**

State	Sows Farrowing				Pigs Per Litter		Pig Crop ³		
	2004	2005	2006 ⁴		2004	2005	2004	2005	
			Number	as % of 2005				Number	as % of 2004
	<i>1,000 Head</i>	<i>1,000 Head</i>	<i>1,000 Head</i>	<i>Percent</i>	<i>Number</i>	<i>Number</i>	<i>1,000 Head</i>	<i>1,000 Head</i>	<i>Percent</i>
AR	38	43	42	98	9.60	9.55	365	411	113
CO	73	75	82	109	8.30	8.55	606	641	106
IL	205	210	210	100	8.85	8.90	1,814	1,869	103
IN	145	130	140	108	8.85	8.80	1,283	1,144	89
IA	410	440	440	100	8.70	8.90	3,567	3,916	110
KS	84	80	87	109	8.70	8.70	731	696	95
MI	45	44	45	102	8.90	9.00	401	396	99
MN	285	275	275	100	9.05	9.10	2,579	2,503	97
MO	170	170	170	100	9.00	9.05	1,530	1,539	101
NE	175	175	170	97	8.90	9.00	1,558	1,575	101
NC	550	540	540	100	8.95	8.85	4,923	4,779	97
OH	74	77	81	105	8.80	9.00	651	693	106
OK	185	190	190	100	8.60	8.80	1,591	1,672	105
PA	53	47	49	104	8.50	9.50	451	447	99
SD	70	72	83	115	9.20	9.40	644	677	105
TX	46	43	44	102	8.40	9.20	386	396	103
WI	24	24	25	104	8.80	8.75	211	210	100
Oth Sts ⁵	204	200	204	102	8.90	8.91	1,814	1,779	98
US	2,836	2,835	2,877	101	8.85	8.94	25,105	25,343	101

¹ December preceding year.

² May not add due to rounding.

³ Number of pigs born December-February that were still on hand March 1, or had been sold.

⁴ Intentions.

⁵ Individual State estimates not available for the 33 Other States.

**Farrowings: Number of Sows, Pigs per Litter, and Pig Crop
by State and United States, March-May 2004-2006 ¹**

State	Sows Farrowing				Pigs per Litter		Pig Crop ²		
	2004	2005	2006 ³		2004	2005	2004	2005	
			Number	as % of 2005				Number	as % of 2004
	<i>1,000 Head</i>	<i>1,000 Head</i>	<i>1,000 Head</i>	<i>Percent</i>	<i>Number</i>	<i>Number</i>	<i>1,000 Head</i>	<i>1,000 Head</i>	<i>Percent</i>
AR	41	42	41	98	9.70	9.70	398	407	102
CO	72	77	82	106	8.10	8.80	583	678	116
IL	215	210	210	100	8.90	8.95	1,914	1,880	98
IN	135	135	140	104	8.90	8.85	1,202	1,195	99
IA	430	440	440	100	8.75	9.05	3,763	3,982	106
KS	84	83	87	105	8.80	8.80	739	730	99
MI	44	45	48	107	9.10	9.00	400	405	101
MN	290	290	280	97	8.95	9.15	2,596	2,654	102
MO	170	170	170	100	9.00	9.10	1,530	1,547	101
NE	175	175	170	97	8.90	9.05	1,558	1,584	102
NC	550	550	540	98	9.10	8.90	5,005	4,895	98
OH	73	77	81	105	8.90	9.00	650	693	107
OK	190	190	190	100	8.80	8.90	1,672	1,691	101
PA	50	47	49	104	8.75	9.10	438	428	98
SD	70	75	85	113	9.40	9.30	658	698	106
TX	47	45	46	102	8.60	9.40	404	423	105
WI	26	25	25	100	8.75	8.75	228	219	96
Oth Sts ⁴	208	206	206	100	9.12	9.13	1,895	1,877	99
US	2,870	2,882	2,890	100	8.93	9.02	25,633	25,986	101

¹ May not add due to rounding.

² Number of pigs born March-May that were still on hand June 1 or had been sold.

³ Intentions.

⁴ Individual State estimates not available for the 33 Other States.

**Farrowings: Number of Sows, Pigs per Litter, and Pig Crop
by State and United States, June-August 2004-2005 ¹**

State	Sows Farrowing			Pigs per Litter		Pig Crop ²		
	2004	2005		2004	2005	2004	2005	
		Number	as % of 2004				Number	as % of 2004
	<i>1,000 Head</i>	<i>1,000 Head</i>	<i>Percent</i>	<i>Number</i>	<i>Number</i>	<i>1,000 Head</i>	<i>1,000 Head</i>	<i>Percent</i>
AR	43	43	100	9.40	9.60	404	413	102
CO	70	80	114	8.40	8.80	588	704	120
IL	210	205	98	8.90	8.90	1,869	1,825	98
IN	140	140	100	9.00	8.90	1,260	1,246	99
IA	440	450	102	8.90	9.00	3,916	4,050	103
KS	87	83	95	8.80	8.80	766	730	95
MI	48	46	96	9.20	9.25	442	426	96
MN	285	280	98	9.05	9.30	2,579	2,604	101
MO	170	170	100	9.00	9.05	1,530	1,539	101
NE	175	175	100	8.90	9.05	1,558	1,584	102
NC	560	560	100	9.15	9.10	5,124	5,096	99
OH	75	77	103	8.90	9.10	668	701	105
OK	195	200	103	9.00	8.90	1,755	1,780	101
PA	46	47	102	9.20	9.40	423	442	104
SD	68	68	100	9.30	9.40	632	639	101
TX	56	44	79	9.05	9.10	507	400	79
WI	24	25	104	8.85	8.70	212	218	103
Oth Sts ³	213	206	97	9.06	9.12	1,929	1,879	97
US	2,905	2,899	100	9.01	9.06	26,162	26,276	100

¹ May not add due to rounding.

² Number of pigs born June-August that were still on hand September 1, or had been sold.

³ Individual State estimates not available for the 33 Other States.

**Farrowings: Number of Sows, Pigs per Litter, and Pig Crop
by State and United States, September-November 2004-2005¹**

State	Sows Farrowing			Pigs per Litter		Pig Crop ²		
	2004	2005		2004	2005	2004	2005	
		Number	as % of 2004				Number	as % of 2004
	<i>1,000 Head</i>	<i>1,000 Head</i>	<i>Percent</i>	<i>Number</i>	<i>Number</i>	<i>1,000 Head</i>	<i>1,000 Head</i>	<i>Percent</i>
AR	42	41	98	9.50	9.70	399	398	100
CO	73	78	107	8.45	8.80	617	686	111
IL	210	200	95	8.85	8.85	1,859	1,770	95
IN	135	135	100	8.85	9.00	1,195	1,215	102
IA	460	455	99	8.90	9.00	4,094	4,095	100
KS	83	84	101	8.80	8.70	730	731	100
MI	46	47	102	9.20	9.20	423	432	102
MN	285	280	98	9.10	9.25	2,594	2,590	100
MO	170	175	103	8.95	8.95	1,522	1,566	103
NE	170	175	103	9.00	9.05	1,530	1,584	104
NC	550	550	100	9.00	9.00	4,950	4,950	100
OH	77	80	104	9.00	9.10	693	728	105
OK	190	185	97	8.90	8.90	1,691	1,647	97
PA	49	47	96	9.50	9.80	466	461	99
SD	71	80	113	9.20	9.30	653	744	114
TX	46	43	93	8.95	8.90	412	383	93
WI	25	27	108	8.80	8.65	220	234	106
Oth Sts ³	206	206	100	8.91	9.04	1,833	1,866	102
US	2,888	2,888	100	8.96	9.03	25,881	26,080	101

¹ May not add due to rounding.

² Number of pigs born September-November that were still on hand December 1 or had been sold.

³ Individual State estimates not available for the 33 Other States.

**Monthly Farrowings: Number of Sows, Pigs per Litter, and Pig Crop,
United States, December-November 2004-2005^{1 2}**

Month	Sows Farrowing		Pigs per Litter		Pig Crop	
	2004	2005	2004	2005	2004	2005
	<i>1,000 Head</i>	<i>1,000 Head</i>	<i>Number</i>	<i>Number</i>	<i>1,000 Head</i>	<i>1,000 Head</i>
Dec ¹	935	938	8.84	8.89	8,265	8,338
Jan	954	951	8.86	8.94	8,448	8,500
Feb	947	946	8.86	8.99	8,392	8,505
Mar	958	967	8.89	8.99	8,515	8,693
Apr	957	962	8.93	9.00	8,550	8,656
May	955	953	8.97	9.06	8,568	8,637
Jun	978	963	8.99	9.07	8,792	8,734
Jul	970	973	9.00	9.04	8,730	8,800
Aug	957	963	9.03	9.08	8,640	8,742
Sep	981	982	8.94	9.03	8,771	8,873
Oct	961	966	8.96	9.05	8,611	8,740
Nov	946	940	8.98	9.01	8,499	8,467
Total	11,498	11,504	8.94	9.01	102,780	103,685

¹ December preceding year.

² Monthly values may not add to quarterly or annual totals due to rounding.

Reliability of December 1 Hogs and Pigs Estimates

Survey Procedures: A random sample of roughly 12,800 U.S. producers was surveyed to provide data for these estimates. Survey procedures ensured that all hog and pig producers, regardless of size, had a chance to be included in the survey. Large producers were sampled more heavily than small operations. During the first half of December data were collected from about 10,400 operations, 81 percent of the total sample. The data collected were received by email, mail, telephone, and face-to-face personal interviews. Regardless of when operations responded, they were asked to report inventories as of December 1.

Estimation Procedures: These hogs and pigs estimates were prepared by the Agricultural Statistics Board after reviewing recommendations and analysis submitted by each field office. National and State survey data were reviewed for reasonableness with each other and with estimates from past years using a balance sheet. The balance sheet begins with the previous inventory estimate, adds the estimates of births and imports, and subtracts the estimates of slaughter, exports, and deaths. This indicated ending inventory level is compared to the Agricultural Statistics Board estimate for reasonableness.

Revision Policy: Revisions to previous estimates are made to improve quarter to quarter relationships. Estimates for the previous four quarters are subject to revision when current estimates are made. In December, estimates for all quarters of the current and previous year are reviewed. The reviews are primarily based on hog check-off receipts and slaughter. Estimates will also be reviewed after data from the Department of Agriculture five-year census of agriculture are available. No revisions will be made after that date.

Reliability: Since all operations raising hogs are not included in the sample, survey estimates are subject to sampling variability. Survey results are also subject to non-sampling errors such as omissions, duplication, and mistakes in reporting, recording, and processing the data. The affects of these errors cannot be measured directly. They are minimized through rigid quality controls in the data collection process and through a careful review of all reported data for consistency and reasonableness.

To assist users in evaluating the reliability of the estimates in this report, the "**Root Mean Square Error**" is shown for selected items in the following table. The "Root Mean Square Error" is a statistical measure based on past performance and is computed using the difference between first and final estimates. The "Root Mean Square Error" for hog inventory estimates over the past 20 quarters is 1.1 percent. This means that chances are 2 out of 3 that the final estimate will not be above or below the current estimate of 61.2 million head by more than 1.1 percent. Chances are 9 out of 10 that the difference will not exceed 2.0 percent.

Reliability of December 1 Hog Estimates ¹

Item	Root Mean Square Error	90% Confidence Level		Difference Between First and Latest Estimates			Quarters	
				Average	Smallest	Largest	First Above Latest	First Below Latest
				<i>1,000 Head</i>	<i>1,000 Head</i>	<i>1,000 Head</i>	<i>Number</i>	<i>Number</i>
All Hogs & Pigs	1.1	2.0	1,210	565	76	1,386	5	15
Pig Crop	1.6	2.8	715	314	2	926	4	16
Expected Farrowings								
Next Quarter	1.8	3.2	91	39	3	158	9	11
Following Quarter	2.0	3.5	100	45	2	146	10	10

¹ Based on quarterly records for the past 20 quarters.

Index

	Page
Annual Farrowings: Number of Sows, Pigs per Litter, and Pig Crop, by State and United States, December-November	13
Farrowings: Number of Sows, Pigs per Litter, and Pig Crop, by State and United States, December-February	14
Farrowings: Number of Sows, Pigs per Litter, and Pig Crop, by State and United States, June-August	16
Farrowings: Number of Sows, Pigs per Litter, and Pig Crop, by State and United States, March-May	15
Farrowings: Number of Sows, Pigs per Litter, and Pig Crop, by State and United States, September-November	17
Farrowings: Number of Sows, Pig Crop, and Pigs per Litter, United States	2
Hogs and Pigs: Breeding, Market, and Total Inventory by State and United States, December 1	5
Hogs and Pigs: Breeding, Market, and Total Inventory by State and United States, June 1	9
Hogs and Pigs: Breeding, Market, and Total Inventory by State and United States, March 1	7
Hogs and Pigs: Breeding, Market, and Total Inventory by State and United States, September 1	11
Hogs and Pigs: Inventory Number by Class, Weight Group, and Quarter, United States	1
Market Hogs and Pigs: Inventory Number by Weight Group, State, and United States, December 1	6
Market Hogs and Pigs: Inventory Number by Weight Group, State, and United States, June 1	10
Market Hogs and Pigs: Inventory Number by Weight Group, State, and United States, March 1	8
Market Hogs and Pigs: Inventory Number by Weight Group, State, and United States, September 1	12
Monthly Farrowings: Number of Sows, Pigs per Litter, and Pig Crop, United States, December-November	18
Pigs per Litter: By Size of Operation, United States	2
Reliability of Hogs and Pigs Estimates	19

ACCESS TO REPORTS!!

For your convenience, there are several ways to obtain NASS reports, data products, and services:

INTERNET ACCESS

All NASS reports are available free of charge on the worldwide Internet. For access, connect to the Internet and go to the NASS Home Page at: www.nass.usda.gov.

E-MAIL SUBSCRIPTION

All NASS reports are available by subscription free of charge direct to your e-mail address. Starting with the NASS Home Page at www.nass.usda.gov, under the right navigation, *Receive reports by Email*, click on **National** or **State**. Follow the instructions on the screen.

PRINTED REPORTS OR DATA PRODUCTS

CALL OUR TOLL-FREE ORDER DESK: 800-999-6779 (U.S. and Canada)
Other areas, please call 703-605-6220 FAX: 703-605-6900
(Visa, MasterCard, check, or money order acceptable for payment.)

ASSISTANCE

For **assistance** with general agricultural statistics or further information about NASS or its products or services, contact the **Agricultural Statistics Hotline** at **800-727-9540**, 7:30 a.m. to 4:00 p.m. ET, or e-mail: nass@nass.usda.gov.

The U.S. Department of Agriculture (USDA) prohibits discrimination in all its programs and activities on the basis of race, color, national origin, age, disability, and where applicable, sex, marital status, familial status, parental status, religion, sexual orientation, genetic information, political beliefs, reprisal, or because all or part of an individual's income is derived from any public assistance program. (Not all prohibited bases apply to all programs.) Persons with disabilities who require alternative means for communication of program information (Braille, large print, audiotape, etc.) should contact USDA's TARGET Center at (202) 720-2600 (voice and TDD).

To file a complaint of discrimination, write to USDA, Director, Office of Civil Rights, 1400 Independence Avenue, S.W., Washington, D.C. 20250-9410, or call (800) 795-3272 (voice) or (202) 720-6382 (TDD). USDA is an equal opportunity provider and employer.