



# NASS

FACT FINDERS FOR AGRICULTURE  
UNITED STATES DEPARTMENT OF AGRICULTURE

Washington, D.C.

# Quarterly Hogs and Pigs

Released September 29, 2006, by the National Agricultural Statistics Service (NASS), Agricultural Statistics Board, U.S. Department of Agriculture. For information on *Quarterly Hogs and Pigs* call Bruce Boess at 202-720-3106, office hours 7:30 a.m. to 4:00 p.m. ET.

## U.S. Hog Inventory Up 1 Percent

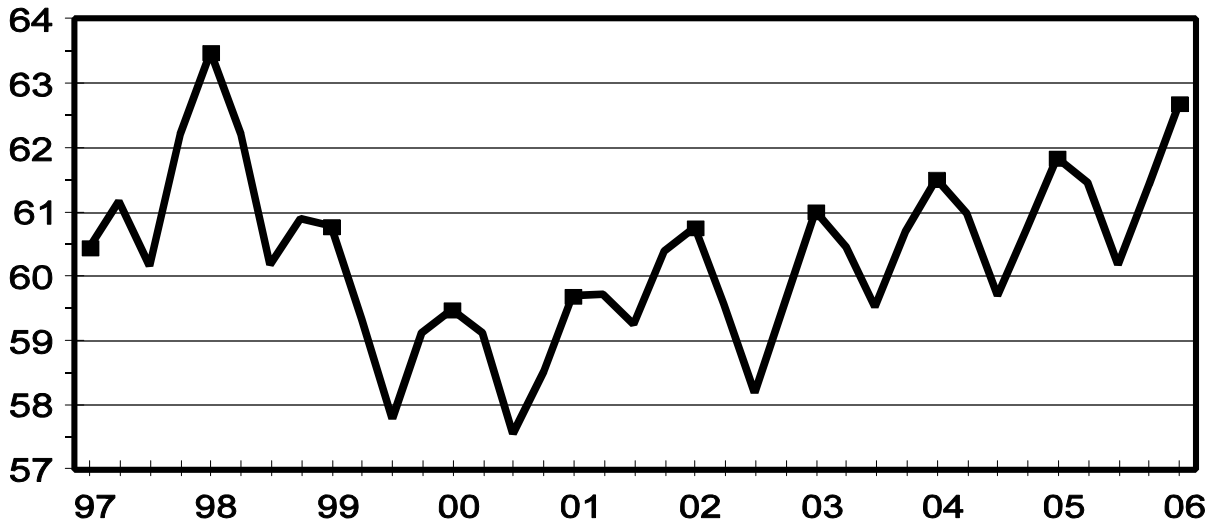
U.S. inventory of all hogs and pigs on September 1, 2006 was 62.7 million head. This was up 1 percent from September 1, 2005 and up 2 percent from June 1, 2006.

**Breeding inventory**, at 6.08 million head, was up 2 percent from last year and up slightly from the previous quarter. **Market hog inventory**, at 56.6 million head, was up 1 percent from last year and up 2 percent from last quarter.

**The June-August 2006 pig crop**, at 26.7 million head, was up 1 percent from 2005 and up 2 percent from 2004. Sows farrowing during this period totaled 2.92 million head, up slightly from 2005 and up 1 percent from 2004. The sows farrowed during this quarter represented 48 percent of the breeding herd. The average pigs saved per litter was 9.14 for the June-August 2006 period, compared to 9.06 last year. Pigs saved per litter by size of operation ranged from 7.70 for operations with 1-99 hogs and pigs to 9.20 for operations with more than 5,000 hogs and pigs.

## U.S. Quarterly Hogs and Pigs Inventory September 1

Million Head



**U.S. hog producers** intend to have 2.92 million sows farrow during the September-November 2006 quarter, up 1 percent from the actual farrowings in both 2005 and 2004. Intended farrowings for December 2006-February 2007, at 2.90 million sows, are up 2 percent from both 2006 and 2005.

The total number of hogs under contract, owned by operations with over 5,000 head, but raised by contractees, accounted for 39 percent of the total U.S. hog inventory, unchanged from last year.

### **Revisions**

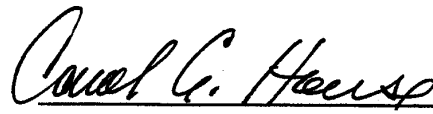
All inventory and pig crop estimates for September 2005 through June 2006 were reviewed using final pig crop, official slaughter, death loss, and updated import and export data. Based on the findings of this review, a small adjustment of less than one-half of one percent was made to the March 2006 inventory along with an adjustment of slightly larger than one-half of one percent to the June 2006 total inventory.

---

This report was approved on September 29, 2006.



Secretary of  
Agriculture  
Mike Johanns



Agricultural Statistics Board  
Chairperson  
Carol C. House

## Contents

|  | <b>Page</b> |
|--|-------------|
| Quarterly U.S. Inventory by Class and Weight Group, 2004-2006 .....                | 1           |
| Quarterly U.S. Sows Farrowed, Pig Crop, and Pigs per Litter, 2004-2007 .....       | 2           |
| Hogs and Pigs: Inventory by State and U.S., 2004-2006                              |             |
| March 1 .....  | 5           |
| June 1 .....   | 7           |
| September 1 .....  | 9           |
| December 1 .....   | 11          |
| Farrowings: Number of Sows, Pigs per Litter, Pig Crop by State and U.S., 2004-2007 |             |
| December-February .....  | 13          |
| March-May .....  | 14          |
| June-August .....  | 15          |
| September-November .....   | 16          |
| Monthly U.S. Farrowings, December-November 2005-2006 .....                         | 17          |
| Reliability Statement .....  | 18          |

**Hogs and Pigs: Inventory Number by Class, Weight Group,  
and Quarter, United States, 2004-2006<sup>1</sup>**

| Item                                     | 2004              | 2005              | 2006              | 2006 as % of   |                |
|--|-------------------|-------------------|-------------------|----------------|----------------|
|  |                   |                   |                   | 2004           | 2005           |
|  | <i>1,000 Head</i> | <i>1,000 Head</i> | <i>1,000 Head</i> | <i>Percent</i> | <i>Percent</i> |
| March 1 Inventory                        |                   |                   |                   |                |                |
| All Hogs and Pigs                        | 59,520            | 59,699            | 60,176            | 101            | 101            |
| Kept for Breeding                        | 5,961             | 5,941             | 6,025             | 101            | 101            |
| Market                                   | 53,558            | 53,757            | 54,151            | 101            | 101            |
| Market Hogs and Pigs<br>by Weight Groups |                   |                   |                   |                |                |
| Under 60 Pounds                          | 19,823            | 19,667            | 19,988            | 101            | 102            |
| 60-119 Pounds                            | 12,954            | 13,087            | 13,006            | 100            | 99             |
| 120-179 Pounds                           | 11,205            | 11,360            | 11,334            | 101            | 100            |
| 180 Pounds and Over                      | 9,578             | 9,644             | 9,824             | 103            | 102            |
| June 1 Inventory                         |                   |                   |                   |                |                |
| All Hogs and Pigs                        | 60,698            | 60,732            | 61,417            | 101            | 101            |
| Kept for Breeding                        | 5,937             | 5,977             | 6,060             | 102            | 101            |
| Market                                   | 54,760            | 54,754            | 55,357            | 101            | 101            |
| Market Hogs and Pigs<br>by Weight Groups |                   |                   |                   |                |                |
| Under 60 Pounds                          | 20,292            | 20,423            | 20,608            | 102            | 101            |
| 60-119 Pounds                            | 13,500            | 13,376            | 13,642            | 101            | 102            |
| 120-179 Pounds                           | 11,256            | 11,143            | 11,465            | 102            | 103            |
| 180 Pounds and Over                      | 9,714             | 9,813             | 9,643             | 99             | 98             |
| September 1 Inventory                    |                   |                   |                   |                |                |
| All Hogs and Pigs                        | 61,519            | 61,846            | 62,704            | 102            | 101            |
| Kept for Breeding                        | 5,962             | 5,972             | 6,079             | 102            | 102            |
| Market                                   | 55,556            | 55,873            | 56,625            | 102            | 101            |
| Market Hogs and Pigs<br>by Weight Groups |                   |                   |                   |                |                |
| Under 60 Pounds                          | 20,729            | 20,764            | 20,998            | 101            | 101            |
| 60-119 Pounds                            | 13,613            | 13,876            | 13,991            | 103            | 101            |
| 120-179 Pounds                           | 11,235            | 11,404            | 11,555            | 103            | 101            |
| 180 Pounds and Over                      | 9,981             | 9,830             | 10,082            | 101            | 103            |
| December 1 Inventory                     |                   |                   |                   |                |                |
| All Hogs and Pigs                        | 60,975            | 61,449            |                   |                |                |
| Kept for Breeding                        | 5,969             | 6,011             |                   |                |                |
| Market                                   | 55,005            | 55,438            |                   |                |                |
| Market Hogs and Pigs<br>by Weight Groups |                   |                   |                   |                |                |
| Under 60 Pounds                          | 19,980            | 20,055            |                   |                |                |
| 60-119 Pounds                            | 13,439            | 13,524            |                   |                |                |
| 120-179 Pounds                           | 11,186            | 11,293            |                   |                |                |
| 180 Pounds and Over                      | 10,401            | 10,567            |                   |                |                |

<sup>1</sup> May not add due to rounding.

**Farrowings: Number of Sows, Pig Crop, and Pigs per Litter,  
United States, 2004-2007 <sup>1</sup>**

| Item                   | 2004              | 2005              | 2006              | 2007              | 2006 as % of   |                | 2007<br>as % of<br>2006 |
|------------------------|-------------------|-------------------|-------------------|-------------------|----------------|----------------|-------------------------|
|                        |                   |                   |                   |                   | 2004           | 2005           |                         |
|                        | <i>1,000 Head</i> | <i>1,000 Head</i> | <i>1,000 Head</i> | <i>1,000 Head</i> | <i>Percent</i> | <i>Percent</i> | <i>Percent</i>          |
| Sows Farrowing         |                   |                   |                   |                   |                |                |                         |
| Dec-Feb <sup>2,3</sup> | 2,836             | 2,835             | 2,840             | 2,902             | 100            | 100            | 102                     |
| Mar-May                | 2,870             | 2,882             | 2,897             |                   | 101            | 101            |                         |
| Dec-May <sup>2</sup>   | 5,706             | 5,716             | 5,737             |                   | 101            | 100            |                         |
| Jun-Aug                | 2,905             | 2,918             | 2,924             |                   | 101            | 100            |                         |
| Sep-Nov <sup>4</sup>   | 2,888             | 2,900             | 2,925             |                   | 101            | 101            |                         |
| Jun-Nov <sup>5</sup>   | 5,793             | 5,818             | 5,849             |                   | 101            | 101            |                         |
| Pig Crop               |                   |                   |                   |                   |                |                |                         |
| Dec-Feb <sup>2</sup>   | 25,105            | 25,343            | 25,658            |                   | 102            | 101            |                         |
| Mar-May                | 25,633            | 25,986            | 26,301            |                   | 103            | 101            |                         |
| Dec-May <sup>2</sup>   | 50,737            | 51,330            | 51,958            |                   | 102            | 101            |                         |
| Jun-Aug                | 26,162            | 26,449            | 26,727            |                   | 102            | 101            |                         |
| Sep-Nov                | 25,881            | 26,187            |                   |                   |                |                |                         |
| Jun-Nov                | 52,043            | 52,635            |                   |                   |                |                |                         |
|                        | <i>Number</i>     | <i>Number</i>     | <i>Number</i>     | <i>Number</i>     | <i>Percent</i> | <i>Percent</i> | <i>Percent</i>          |
| Pigs per Litter        |                   |                   |                   |                   |                |                |                         |
| Dec-Feb <sup>2</sup>   | 8.85              | 8.94              | 9.03              |                   | 102            | 101            |                         |
| Mar-May                | 8.93              | 9.02              | 9.08              |                   | 102            | 101            |                         |
| Dec-May <sup>2</sup>   | 8.89              | 8.98              | 9.06              |                   | 102            | 101            |                         |
| Jun-Aug                | 9.01              | 9.06              | 9.14              |                   | 101            | 101            |                         |
| Sep-Nov                | 8.96              | 9.03              |                   |                   |                |                |                         |
| Jun-Nov                | 8.98              | 9.05              |                   |                   |                |                |                         |

<sup>1</sup> May not add due to rounding.

<sup>2</sup> December preceding year.

<sup>3</sup> Intentions for 2007.

<sup>4</sup> Intentions for 2006.

<sup>5</sup> Actual farrowings for June-August plus intentions for September-November.

**Pigs per Litter: By Size of Operation, United States, 2005-2006 <sup>1</sup>**

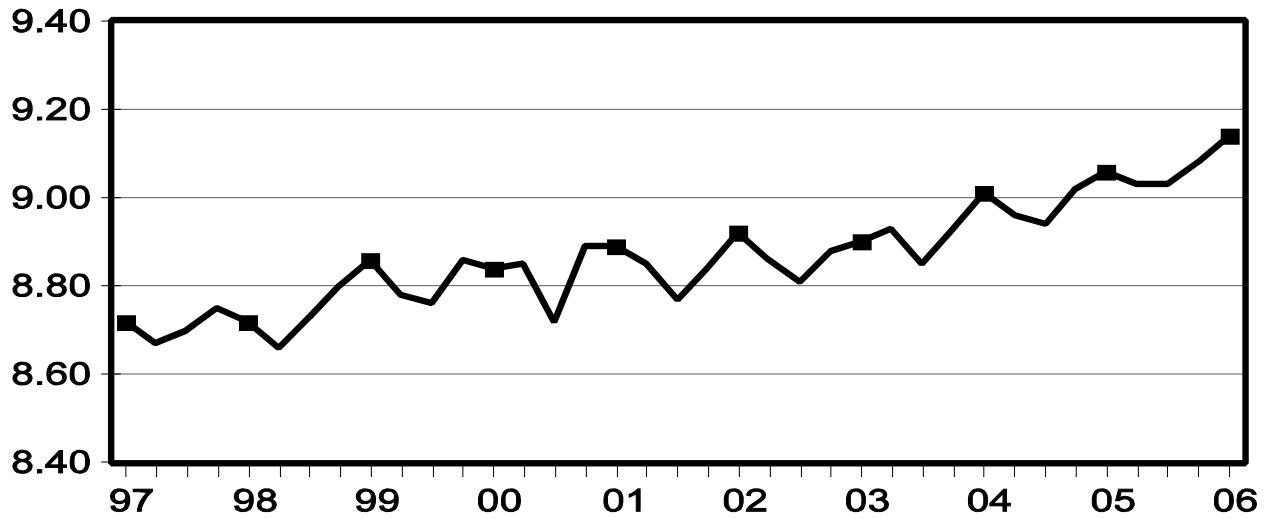
| Pig Crop             | Pigs per Litter on Operations Having |                 |                 |                     |                     |                |
|----------------------|--------------------------------------|-----------------|-----------------|---------------------|---------------------|----------------|
|                      | 1-99<br>Head                         | 100-499<br>Head | 500-999<br>Head | 1,000-1,999<br>Head | 2,000-4,999<br>Head | 5,000+<br>Head |
|                      | <i>Number</i>                        | <i>Number</i>   | <i>Number</i>   | <i>Number</i>       | <i>Number</i>       | <i>Number</i>  |
| 2005                 |                                      |                 |                 |                     |                     |                |
| Dec-Feb <sup>2</sup> | 7.50                                 | 7.80            | 8.30            | 8.80                | 8.90                | 9.00           |
| Mar-May              | 7.50                                 | 7.90            | 8.30            | 8.80                | 9.00                | 9.10           |
| Jun-Aug              | 7.60                                 | 7.90            | 8.70            | 8.80                | 9.00                | 9.10           |
| Sep-Nov              | 7.50                                 | 8.00            | 8.50            | 8.70                | 9.00                | 9.10           |
| 2006                 |                                      |                 |                 |                     |                     |                |
| Dec-Feb <sup>2</sup> | 7.50                                 | 8.00            | 8.30            | 8.80                | 9.00                | 9.10           |
| Mar-May              | 7.60                                 | 8.00            | 8.40            | 8.80                | 9.00                | 9.20           |
| Jun-Aug              | 7.70                                 | 8.00            | 8.40            | 8.80                | 9.10                | 9.20           |
| Sep-Nov              |                                      |                 |                 |                     |                     |                |

<sup>1</sup> Pigs per litter rounded to the nearest tenth.

<sup>2</sup> December preceding year.

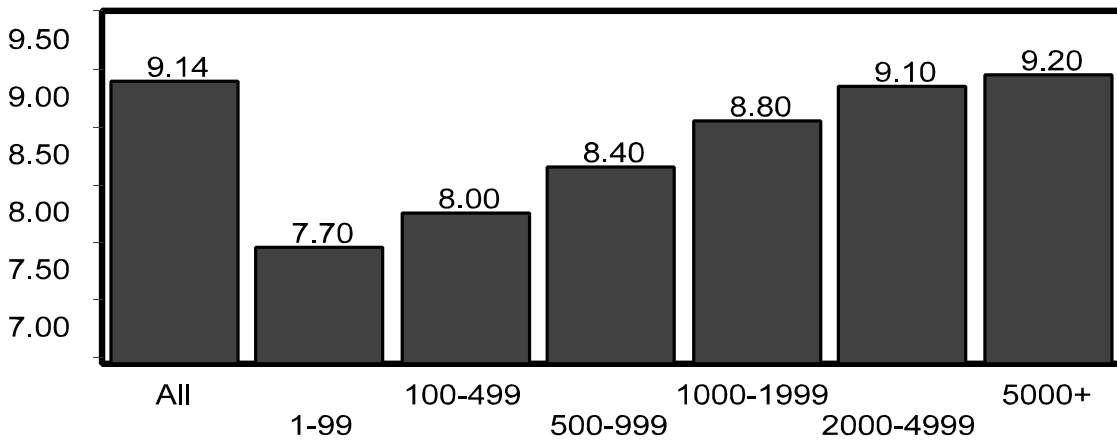
## U.S. Quarterly Litter Rate June-August

Number Head



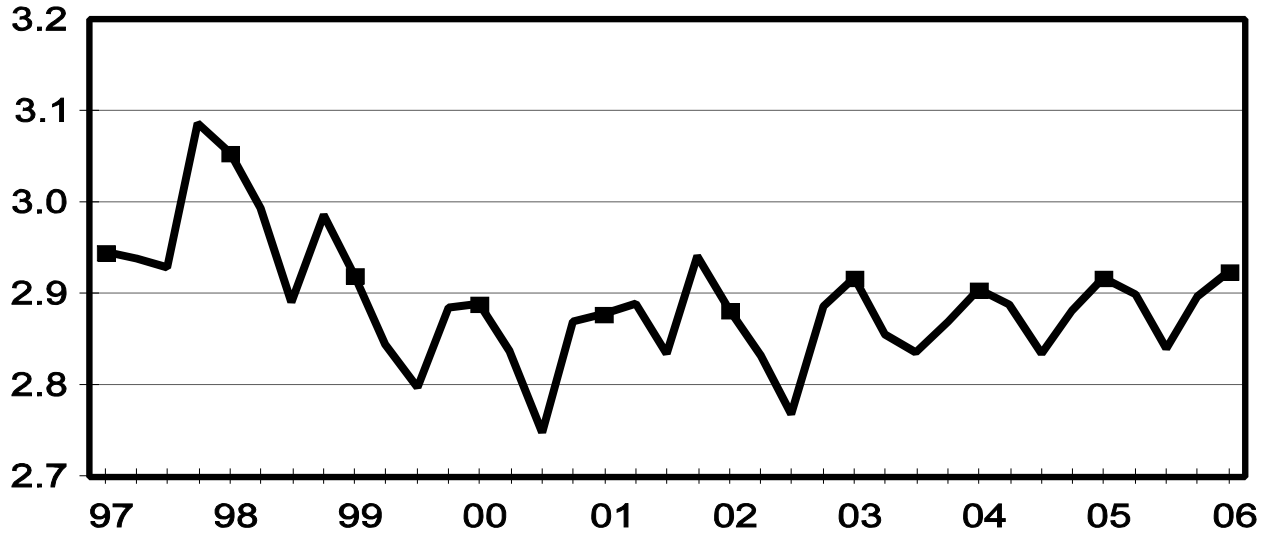
## U.S. Pigs per Litter By Size of Operation, June-August 2006

Number Head



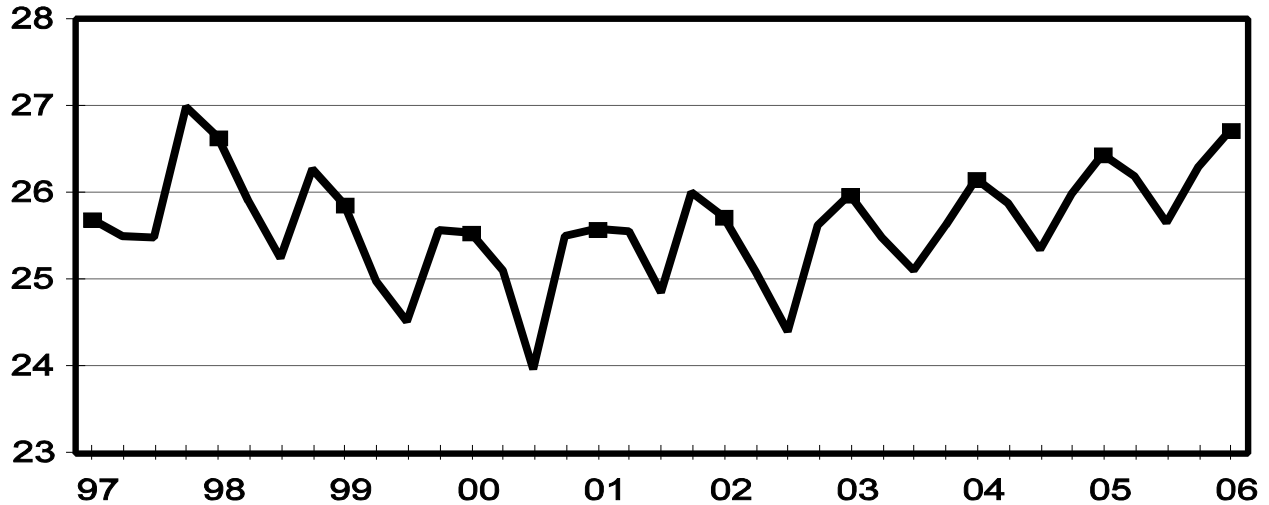
## U.S. Quarterly Sows Farrowed June-August

Million Head



## U.S. Quarterly Pig Crop June-August

Million Head



**Hogs and Pigs: Breeding, Market, and Total Inventory  
by State and United States, March 1, 2005-2006<sup>1</sup>**

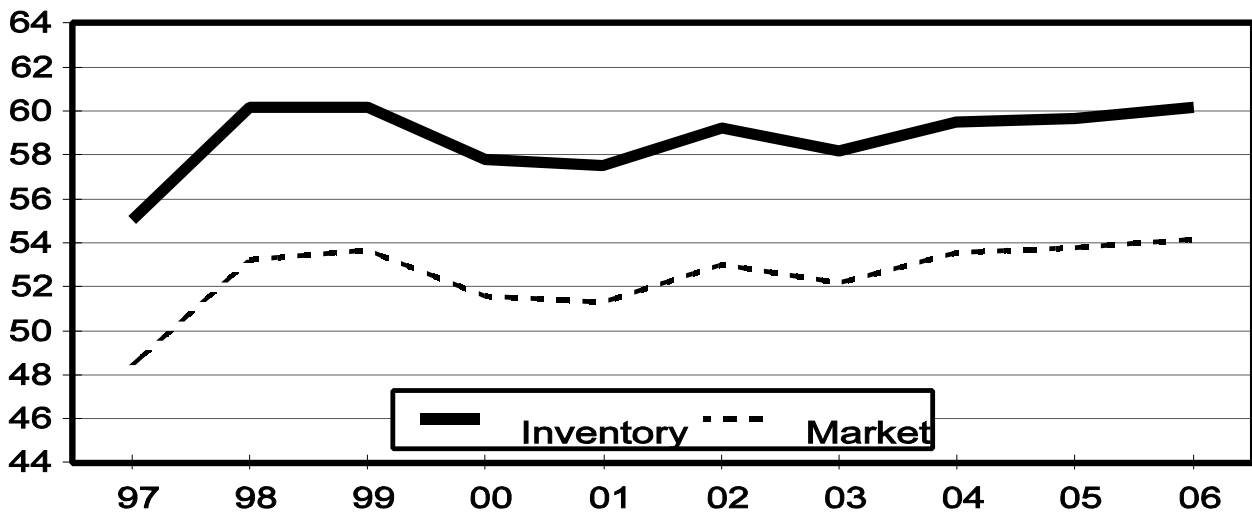
| State                | Breeding          |                   |                | Market            |                   |                | Total             |                   |                |
|----------------------|-------------------|-------------------|----------------|-------------------|-------------------|----------------|-------------------|-------------------|----------------|
|                      | 2005              | 2006              |                | 2005              | 2006              |                | 2005              | 2006              |                |
|                      |                   | Number            | as % of 2005   |                   | Number            | as % of 2005   |                   | Number            | as % of 2005   |
|                      | <i>1,000 Head</i> | <i>1,000 Head</i> | <i>Percent</i> | <i>1,000 Head</i> | <i>1,000 Head</i> | <i>Percent</i> | <i>1,000 Head</i> | <i>1,000 Head</i> | <i>Percent</i> |
| AR                   | 85                | 85                | 100            | 245               | 185               | 76             | 330               | 270               | 82             |
| CO                   | 140               | 150               | 107            | 670               | 680               | 101            | 810               | 830               | 102            |
| IL                   | 430               | 420               | 98             | 3,570             | 3,680             | 103            | 4,000             | 4,100             | 103            |
| IN                   | 290               | 310               | 107            | 2,710             | 2,790             | 103            | 3,000             | 3,100             | 103            |
| IA                   | 1,080             | 1,100             | 102            | 15,020            | 15,200            | 101            | 16,100            | 16,300            | 101            |
| KS                   | 155               | 165               | 106            | 1,525             | 1,565             | 103            | 1,680             | 1,730             | 103            |
| MI                   | 100               | 100               | 100            | 820               | 860               | 105            | 920               | 960               | 104            |
| MN                   | 590               | 580               | 98             | 5,710             | 5,820             | 102            | 6,300             | 6,400             | 102            |
| MO                   | 330               | 345               | 105            | 2,520             | 2,355             | 93             | 2,850             | 2,700             | 95             |
| NE                   | 355               | 355               | 100            | 2,395             | 2,545             | 106            | 2,750             | 2,900             | 105            |
| NC                   | 1,010             | 1,020             | 101            | 8,690             | 8,480             | 98             | 9,700             | 9,500             | 98             |
| OH                   | 160               | 160               | 100            | 1,340             | 1,380             | 103            | 1,500             | 1,540             | 103            |
| OK                   | 360               | 360               | 100            | 2,020             | 1,970             | 98             | 2,380             | 2,330             | 98             |
| PA                   | 105               | 100               | 95             | 995               | 1,010             | 102            | 1,100             | 1,110             | 101            |
| SD                   | 145               | 155               | 107            | 1,215             | 1,285             | 106            | 1,360             | 1,440             | 106            |
| TX                   | 95                | 100               | 105            | 815               | 830               | 102            | 910               | 930               | 102            |
| WI                   | 50                | 50                | 100            | 380               | 370               | 97             | 430               | 420               | 98             |
| Oth Sts <sup>2</sup> | 461               | 470               | 102            | 3,117             | 3,146             | 101            | 3,579             | 3,616             | 101            |
| US                   | 5,941             | 6,025             | 101            | 53,757            | 54,151            | 101            | 59,699            | 60,176            | 101            |

<sup>1</sup> May not add due to rounding.

<sup>2</sup> Individual State estimates not available for the 33 Other States.

## U.S. Hog Inventory & Market Hogs March 1

Million Head





**Market Hogs and Pigs: Inventory Number by Weight Group,  
State, and United States, March 1, 2005-2006 <sup>1</sup>**

| State                   | Under<br>60 Lbs.  |                   | 60-119<br>Lbs.    |                   | 120-179<br>Lbs.   |                   | 180 Lbs.<br>and Over |                   |
|-------------------------|-------------------|-------------------|-------------------|-------------------|-------------------|-------------------|----------------------|-------------------|
|                         | 2005              | 2006              | 2005              | 2006              | 2005              | 2006              | 2005                 | 2006              |
|                         | <i>1,000 Head</i> | <i>1,000 Head</i> | <i>1,000 Head</i> | <i>1,000 Head</i> | <i>1,000 Head</i> | <i>1,000 Head</i> | <i>1,000 Head</i>    | <i>1,000 Head</i> |
| AR                      | 145               | 140               | 35                | 15                | 30                | 15                | 35                   | 15                |
| CO                      | 365               | 360               | 115               | 90                | 85                | 80                | 105                  | 150               |
| IL                      | 1,360             | 1,310             | 840               | 870               | 760               | 820               | 610                  | 680               |
| IN                      | 1,000             | 1,030             | 650               | 700               | 570               | 560               | 490                  | 500               |
| IA                      | 4,330             | 4,680             | 4,230             | 4,140             | 3,490             | 3,440             | 2,970                | 2,940             |
| KS                      | 540               | 530               | 255               | 285               | 280               | 345               | 450                  | 405               |
| MI                      | 325               | 315               | 190               | 200               | 160               | 175               | 145                  | 170               |
| MN                      | 2,230             | 2,280             | 1,390             | 1,330             | 1,250             | 1,310             | 840                  | 900               |
| MO                      | 1,190             | 1,085             | 520               | 490               | 480               | 460               | 330                  | 320               |
| NE                      | 970               | 1,000             | 600               | 660               | 470               | 490               | 355                  | 395               |
| NC                      | 3,410             | 3,400             | 2,030             | 1,940             | 1,830             | 1,690             | 1,420                | 1,450             |
| OH                      | 550               | 570               | 310               | 315               | 300               | 305               | 180                  | 190               |
| OK                      | 960               | 910               | 330               | 350               | 260               | 220               | 470                  | 490               |
| PA                      | 290               | 370               | 290               | 270               | 230               | 210               | 185                  | 160               |
| SD                      | 430               | 455               | 295               | 300               | 270               | 275               | 220                  | 255               |
| TX                      | 295               | 265               | 190               | 190               | 160               | 195               | 170                  | 180               |
| WI                      | 145               | 145               | 90                | 90                | 80                | 70                | 65                   | 65                |
| Oth<br>Sts <sup>2</sup> | 1,132             | 1,143             | 727               | 771               | 655               | 674               | 604                  | 559               |
| US                      | 19,667            | 19,988            | 13,087            | 13,006            | 11,360            | 11,334            | 9,644                | 9,824             |

<sup>1</sup> Weight groups may not add to Market due to rounding.

<sup>2</sup> Individual State estimates not available for the 33 Other States.

**Hogs and Pigs: Breeding, Market, and Total Inventory  
by State and United States, June 1, 2005-2006<sup>1</sup>**

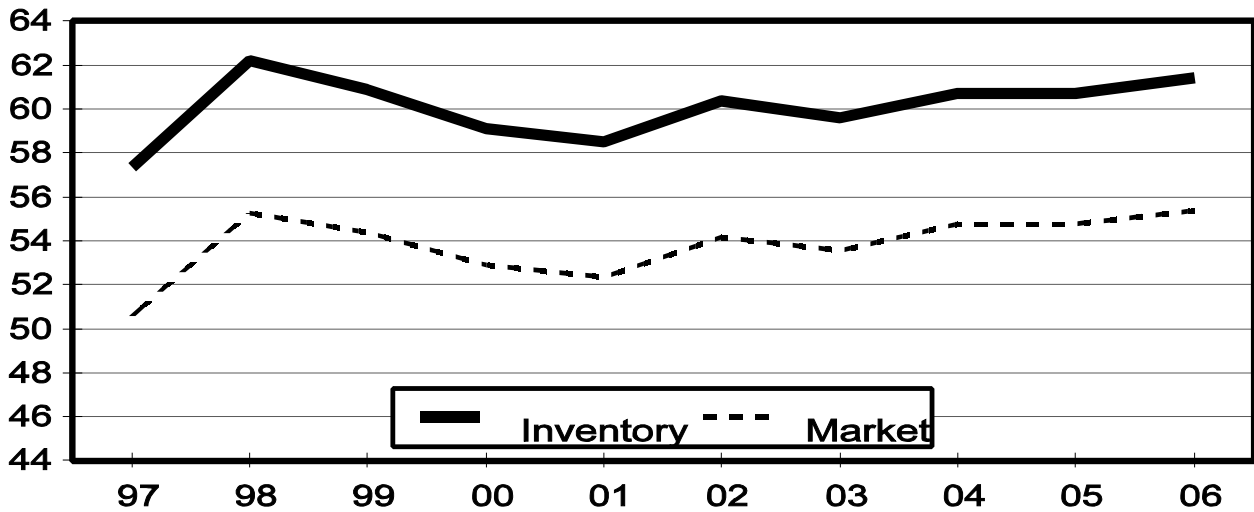
| State                | Breeding          |                   |                | Market            |                   |                | Total             |                   |                |
|----------------------|-------------------|-------------------|----------------|-------------------|-------------------|----------------|-------------------|-------------------|----------------|
|                      | 2005              | 2006              |                | 2005              | 2006              |                | 2005              | 2006              |                |
|                      |                   | Number            | as % of 2005   |                   | Number            | as % of 2005   |                   | Number            | as % of 2005   |
|                      | <i>1,000 Head</i> | <i>1,000 Head</i> | <i>Percent</i> | <i>1,000 Head</i> | <i>1,000 Head</i> | <i>Percent</i> | <i>1,000 Head</i> | <i>1,000 Head</i> | <i>Percent</i> |
| AR                   | 85                | 85                | 100            | 205               | 195               | 95             | 290               | 280               | 97             |
| CO                   | 140               | 150               | 107            | 640               | 690               | 108            | 780               | 840               | 108            |
| IL                   | 430               | 430               | 100            | 3,670             | 3,770             | 103            | 4,100             | 4,200             | 102            |
| IN                   | 300               | 320               | 107            | 2,800             | 2,880             | 103            | 3,100             | 3,200             | 103            |
| IA                   | 1,070             | 1,080             | 101            | 15,130            | 15,420            | 102            | 16,200            | 16,500            | 102            |
| KS                   | 155               | 160               | 103            | 1,535             | 1,670             | 109            | 1,690             | 1,830             | 108            |
| MI                   | 100               | 100               | 100            | 810               | 870               | 107            | 910               | 970               | 107            |
| MN                   | 600               | 590               | 98             | 6,000             | 6,110             | 102            | 6,600             | 6,700             | 102            |
| MO                   | 340               | 350               | 103            | 2,510             | 2,350             | 94             | 2,850             | 2,700             | 95             |
| NE                   | 355               | 365               | 103            | 2,445             | 2,585             | 106            | 2,800             | 2,950             | 105            |
| NC                   | 1,020             | 1,020             | 100            | 8,880             | 8,580             | 97             | 9,900             | 9,600             | 97             |
| OH                   | 160               | 165               | 103            | 1,420             | 1,445             | 102            | 1,580             | 1,610             | 102            |
| OK                   | 360               | 360               | 100            | 2,020             | 2,000             | 99             | 2,380             | 2,360             | 99             |
| PA                   | 100               | 100               | 100            | 970               | 990               | 102            | 1,070             | 1,090             | 102            |
| SD                   | 145               | 160               | 110            | 1,255             | 1,300             | 104            | 1,400             | 1,460             | 104            |
| TX                   | 100               | 105               | 105            | 830               | 855               | 103            | 930               | 960               | 103            |
| WI                   | 50                | 55                | 110            | 380               | 375               | 99             | 430               | 430               | 100            |
| Oth Sts <sup>2</sup> | 467               | 465               | 99             | 3,254             | 3,272             | 101            | 3,722             | 3,737             | 100            |
| US                   | 5,977             | 6,060             | 101            | 54,754            | 55,357            | 101            | 60,732            | 61,417            | 101            |

<sup>1</sup> May not add due to rounding.

<sup>2</sup> Individual State estimates not available for the 33 Other States.

## U.S. Hog Inventory & Market Hogs June 1

Million Head



**Market Hogs and Pigs: Inventory Number by Weight Group,  
State, and United States, June 1, 2005-2006 <sup>1</sup>**

| State                   | Under<br>60 Lbs.  |                   | 60-119<br>Lbs.    |                   | 120-179<br>Lbs.   |                   | 180 Lbs.<br>and Over |                   |
|-------------------------|-------------------|-------------------|-------------------|-------------------|-------------------|-------------------|----------------------|-------------------|
|                         | 2005              | 2006              | 2005              | 2006              | 2005              | 2006              | 2005                 | 2006              |
|                         | <i>1,000 Head</i> | <i>1,000 Head</i> | <i>1,000 Head</i> | <i>1,000 Head</i> | <i>1,000 Head</i> | <i>1,000 Head</i> | <i>1,000 Head</i>    | <i>1,000 Head</i> |
| AR                      | 140               | 140               | 20                | 20                | 20                | 15                | 25                   | 20                |
| CO                      | 355               | 360               | 110               | 85                | 60                | 95                | 115                  | 150               |
| IL                      | 1,340             | 1,350             | 900               | 940               | 770               | 840               | 660                  | 640               |
| IN                      | 1,040             | 1,080             | 700               | 760               | 550               | 550               | 510                  | 490               |
| IA                      | 4,600             | 4,760             | 4,130             | 4,240             | 3,500             | 3,530             | 2,900                | 2,890             |
| KS                      | 550               | 575               | 305               | 360               | 280               | 310               | 400                  | 425               |
| MI                      | 310               | 325               | 200               | 195               | 155               | 175               | 145                  | 175               |
| MN                      | 2,410             | 2,430             | 1,440             | 1,500             | 1,220             | 1,290             | 930                  | 890               |
| MO                      | 1,230             | 1,135             | 480               | 490               | 450               | 420               | 350                  | 305               |
| NE                      | 960               | 1,000             | 640               | 680               | 490               | 530               | 355                  | 375               |
| NC                      | 3,560             | 3,540             | 2,140             | 1,960             | 1,720             | 1,690             | 1,460                | 1,390             |
| OH                      | 580               | 580               | 340               | 360               | 300               | 320               | 200                  | 185               |
| OK                      | 960               | 920               | 330               | 330               | 230               | 270               | 500                  | 480               |
| PA                      | 285               | 320               | 290               | 290               | 225               | 215               | 170                  | 165               |
| SD                      | 465               | 465               | 320               | 310               | 250               | 275               | 220                  | 250               |
| TX                      | 325               | 265               | 150               | 220               | 160               | 205               | 195                  | 165               |
| WI                      | 150               | 145               | 90                | 105               | 70                | 70                | 70                   | 55                |
| Oth<br>Sts <sup>2</sup> | 1,163             | 1,218             | 791               | 797               | 693               | 665               | 608                  | 593               |
| US                      | 20,423            | 20,608            | 13,376            | 13,642            | 11,143            | 11,465            | 9,813                | 9,643             |

<sup>1</sup> Weight groups may not add to Market due to rounding.

<sup>2</sup> Individual State estimates not available for the 33 Other States.

**Hogs and Pigs: Breeding, Market, and Total Inventory  
by State and United States, September 1, 2005-2006<sup>1</sup>**

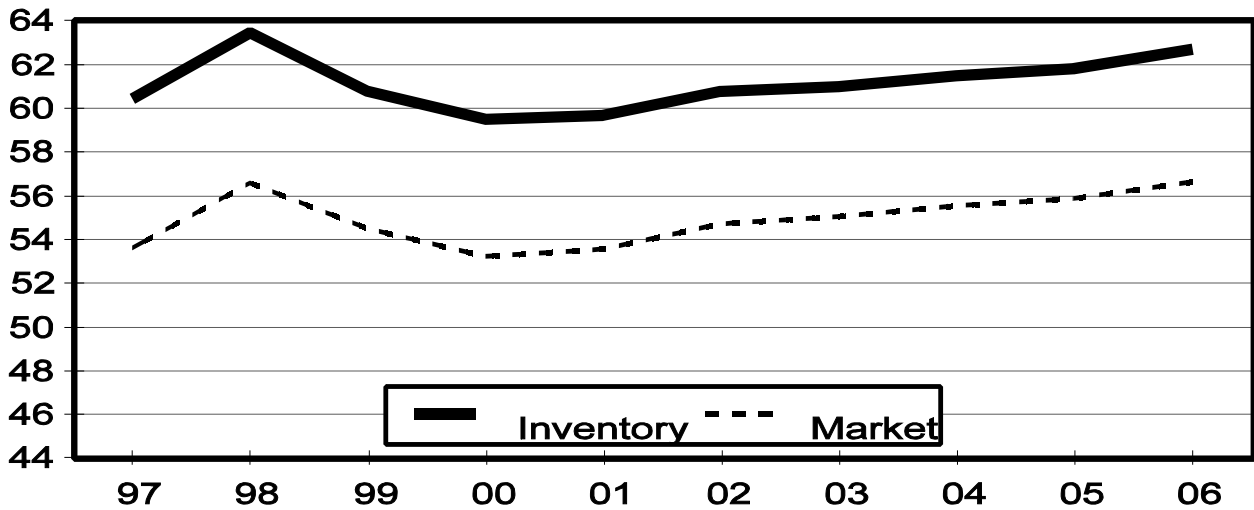
| State                | Breeding          |                   |                | Market            |                   |                | Total             |                   |                |
|----------------------|-------------------|-------------------|----------------|-------------------|-------------------|----------------|-------------------|-------------------|----------------|
|                      | 2005              | 2006              |                | 2005              | 2006              |                | 2005              | 2006              |                |
|                      |                   | Number            | as % of 2005   |                   | Number            | as % of 2005   |                   | Number            | as % of 2005   |
|                      | <i>1,000 Head</i> | <i>1,000 Head</i> | <i>Percent</i> | <i>1,000 Head</i> | <i>1,000 Head</i> | <i>Percent</i> | <i>1,000 Head</i> | <i>1,000 Head</i> | <i>Percent</i> |
| AR                   | 85                | 85                | 100            | 200               | 195               | 98             | 285               | 280               | 98             |
| CO                   | 145               | 155               | 107            | 715               | 695               | 97             | 860               | 850               | 99             |
| IL                   | 420               | 440               | 105            | 3,630             | 3,910             | 108            | 4,050             | 4,350             | 107            |
| IN                   | 300               | 330               | 110            | 2,800             | 3,020             | 108            | 3,100             | 3,350             | 108            |
| IA                   | 1,080             | 1,080             | 100            | 15,520            | 15,820            | 102            | 16,600            | 16,900            | 102            |
| KS                   | 155               | 165               | 106            | 1,565             | 1,745             | 112            | 1,720             | 1,910             | 111            |
| MI                   | 100               | 100               | 100            | 830               | 870               | 105            | 930               | 970               | 104            |
| MN                   | 600               | 590               | 98             | 6,200             | 6,310             | 102            | 6,800             | 6,900             | 101            |
| MO                   | 340               | 355               | 104            | 2,510             | 2,395             | 95             | 2,850             | 2,750             | 96             |
| NE                   | 350               | 350               | 100            | 2,450             | 2,550             | 104            | 2,800             | 2,900             | 104            |
| NC                   | 1,020             | 1,010             | 99             | 9,080             | 8,690             | 96             | 10,100            | 9,700             | 96             |
| OH                   | 160               | 170               | 106            | 1,400             | 1,490             | 106            | 1,560             | 1,660             | 106            |
| OK                   | 360               | 360               | 100            | 2,060             | 2,030             | 99             | 2,420             | 2,390             | 99             |
| PA                   | 95                | 105               | 111            | 985               | 1,045             | 106            | 1,080             | 1,150             | 106            |
| SD                   | 140               | 155               | 111            | 1,240             | 1,325             | 107            | 1,380             | 1,480             | 107            |
| TX                   | 100               | 100               | 100            | 890               | 880               | 99             | 990               | 980               | 99             |
| WI                   | 50                | 55                | 110            | 370               | 375               | 101            | 420               | 430               | 102            |
| Oth Sts <sup>2</sup> | 472               | 474               | 100            | 3,428             | 3,280             | 96             | 3,901             | 3,754             | 96             |
| US                   | 5,972             | 6,079             | 102            | 55,873            | 56,625            | 101            | 61,846            | 62,704            | 101            |

<sup>1</sup> May not add due to rounding.

<sup>2</sup> Individual State estimates not available for the 33 Other States.

## U.S. Hog Inventory & Market Hogs September 1

Million Head



**Market Hogs and Pigs: Inventory Number by Weight Group,  
State, and United States, September 1, 2005-2006 <sup>1</sup>**

| State                   | Under<br>60 Lbs.  |                   | 60-119<br>Lbs.    |                   | 120-179<br>Lbs.   |                   | 180 Lbs.<br>and Over |                   |
|-------------------------|-------------------|-------------------|-------------------|-------------------|-------------------|-------------------|----------------------|-------------------|
|                         | 2005              | 2006              | 2005              | 2006              | 2005              | 2006              | 2005                 | 2006              |
|                         | <i>1,000 Head</i> | <i>1,000 Head</i> | <i>1,000 Head</i> | <i>1,000 Head</i> | <i>1,000 Head</i> | <i>1,000 Head</i> | <i>1,000 Head</i>    | <i>1,000 Head</i> |
| AR                      | 145               | 145               | 20                | 15                | 15                | 15                | 20                   | 20                |
| CO                      | 400               | 385               | 110               | 85                | 85                | 85                | 120                  | 140               |
| IL                      | 1,380             | 1,370             | 890               | 980               | 800               | 850               | 560                  | 710               |
| IN                      | 1,050             | 1,120             | 720               | 770               | 550               | 590               | 480                  | 540               |
| IA                      | 4,780             | 4,850             | 4,400             | 4,470             | 3,450             | 3,520             | 2,890                | 2,980             |
| KS                      | 535               | 600               | 355               | 380               | 265               | 300               | 410                  | 465               |
| MI                      | 320               | 305               | 195               | 215               | 165               | 180               | 150                  | 170               |
| MN                      | 2,450             | 2,490             | 1,500             | 1,560             | 1,320             | 1,300             | 930                  | 960               |
| MO                      | 1,180             | 1,115             | 520               | 480               | 470               | 470               | 340                  | 330               |
| NE                      | 980               | 990               | 660               | 660               | 460               | 510               | 350                  | 390               |
| NC                      | 3,650             | 3,560             | 2,130             | 2,010             | 1,780             | 1,710             | 1,520                | 1,410             |
| OH                      | 580               | 610               | 335               | 360               | 290               | 320               | 195                  | 200               |
| OK                      | 930               | 960               | 300               | 320               | 270               | 260               | 560                  | 490               |
| PA                      | 300               | 340               | 270               | 290               | 220               | 230               | 195                  | 185               |
| SD                      | 440               | 485               | 315               | 315               | 255               | 275               | 230                  | 250               |
| TX                      | 290               | 320               | 210               | 195               | 195               | 180               | 195                  | 185               |
| WI                      | 145               | 150               | 90                | 85                | 70                | 75                | 65                   | 65                |
| Oth<br>Sts <sup>2</sup> | 1,209             | 1,203             | 856               | 801               | 744               | 685               | 620                  | 592               |
| US                      | 20,764            | 20,998            | 13,876            | 13,991            | 11,404            | 11,555            | 9,830                | 10,082            |

<sup>1</sup> Weight groups may not add to Market due to rounding.

<sup>2</sup> Individual State estimates not available for the 33 Other States.

**Hogs and Pigs: Breeding, Market, and Total Inventory  
by State and United States, December 1, 2004-2005<sup>1</sup>**

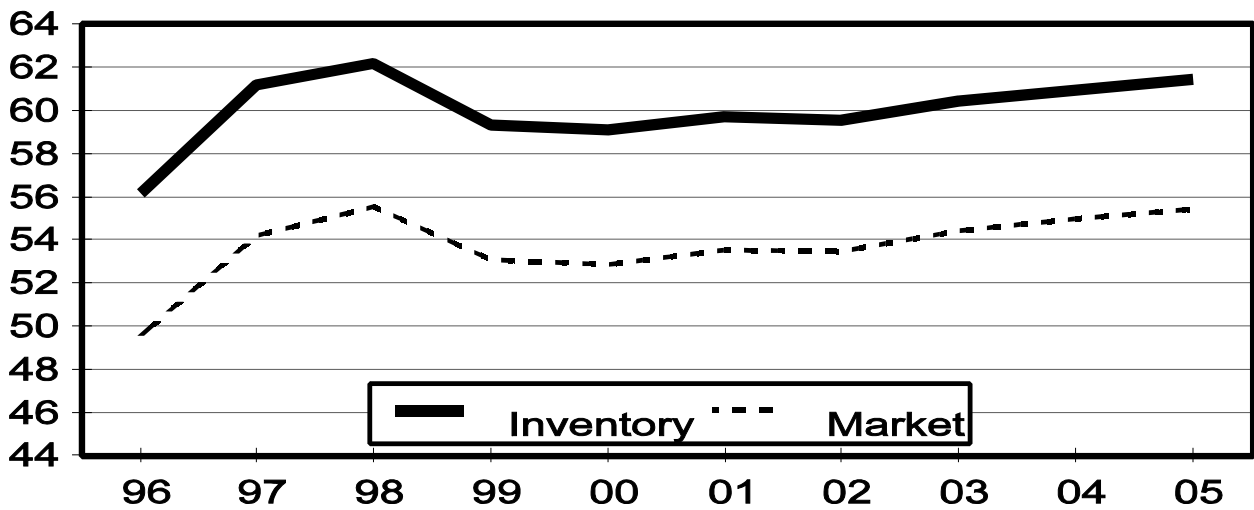
| State                | Breeding          |                   |                | Market            |                   |                | Total             |                   |                |
|----------------------|-------------------|-------------------|----------------|-------------------|-------------------|----------------|-------------------|-------------------|----------------|
|                      | 2004              | 2005              |                | 2004              | 2005              |                | 2004              | 2005              |                |
|                      |                   | Number            | as % of 2004   |                   | Number            | as % of 2004   |                   | Number            | as % of 2004   |
|                      | <i>1,000 Head</i> | <i>1,000 Head</i> | <i>Percent</i> | <i>1,000 Head</i> | <i>1,000 Head</i> | <i>Percent</i> | <i>1,000 Head</i> | <i>1,000 Head</i> | <i>Percent</i> |
| AR                   | 85                | 85                | 100            | 245               | 185               | 76             | 330               | 270               | 82             |
| CO                   | 140               | 145               | 104            | 660               | 705               | 107            | 800               | 850               | 106            |
| IL                   | 420               | 430               | 102            | 3,680             | 3,570             | 97             | 4,100             | 4,000             | 98             |
| IN                   | 290               | 310               | 107            | 2,910             | 2,940             | 101            | 3,200             | 3,250             | 102            |
| IA                   | 1,070             | 1,070             | 100            | 15,230            | 15,530            | 102            | 16,300            | 16,600            | 102            |
| KS                   | 155               | 160               | 103            | 1,555             | 1,630             | 105            | 1,710             | 1,790             | 105            |
| MI                   | 110               | 100               | 91             | 840               | 860               | 102            | 950               | 960               | 101            |
| MN                   | 600               | 590               | 98             | 5,900             | 6,010             | 102            | 6,500             | 6,600             | 102            |
| MO                   | 340               | 345               | 101            | 2,560             | 2,355             | 92             | 2,900             | 2,700             | 93             |
| NE                   | 355               | 350               | 99             | 2,495             | 2,500             | 100            | 2,850             | 2,850             | 100            |
| NC                   | 1,020             | 1,010             | 99             | 8,880             | 8,790             | 99             | 9,900             | 9,800             | 99             |
| OH                   | 155               | 165               | 106            | 1,295             | 1,395             | 108            | 1,450             | 1,560             | 108            |
| OK                   | 360               | 360               | 100            | 2,030             | 2,010             | 99             | 2,390             | 2,370             | 99             |
| PA                   | 115               | 100               | 87             | 965               | 1,000             | 104            | 1,080             | 1,100             | 102            |
| SD                   | 140               | 165               | 118            | 1,200             | 1,325             | 110            | 1,340             | 1,490             | 111            |
| TX                   | 100               | 100               | 100            | 890               | 830               | 93             | 990               | 930               | 94             |
| WI                   | 50                | 55                | 110            | 380               | 375               | 99             | 430               | 430               | 100            |
| Oth Sts <sup>2</sup> | 464               | 471               | 101            | 3,290             | 3,428             | 104            | 3,755             | 3,899             | 104            |
| US                   | 5,969             | 6,011             | 101            | 55,005            | 55,438            | 101            | 60,975            | 61,449            | 101            |

<sup>1</sup> May not add due to rounding.

<sup>2</sup> Individual State estimates not available for the 33 other States.

## U.S. Hog Inventory & Market Hogs December 1

Million Head



**Market Hogs and Pigs: Inventory Number by Weight Group,  
State, and United States, December 1, 2004-2005 <sup>1</sup>**

| State                   | Under<br>60 Lbs.  |                   | 60-119<br>Lbs.    |                   | 120-179<br>Lbs.   |                   | 180 Lbs.<br>and Over |                   |
|-------------------------|-------------------|-------------------|-------------------|-------------------|-------------------|-------------------|----------------------|-------------------|
|                         | 2004              | 2005              | 2004              | 2005              | 2004              | 2005              | 2004                 | 2005              |
|                         | <i>1,000 Head</i> | <i>1,000 Head</i> | <i>1,000 Head</i> | <i>1,000 Head</i> | <i>1,000 Head</i> | <i>1,000 Head</i> | <i>1,000 Head</i>    | <i>1,000 Head</i> |
| AR                      | 130               | 130               | 40                | 20                | 35                | 15                | 40                   | 20                |
| CO                      | 355               | 390               | 100               | 95                | 75                | 85                | 130                  | 135               |
| IL                      | 1,410             | 1,300             | 830               | 860               | 770               | 740               | 670                  | 670               |
| IN                      | 1,010             | 1,060             | 750               | 730               | 600               | 560               | 550                  | 590               |
| IA                      | 4,580             | 4,610             | 4,130             | 4,180             | 3,340             | 3,520             | 3,180                | 3,220             |
| KS                      | 460               | 570               | 330               | 315               | 340               | 315               | 425                  | 430               |
| MI                      | 330               | 315               | 195               | 205               | 160               | 175               | 155                  | 165               |
| MN                      | 2,250             | 2,320             | 1,420             | 1,460             | 1,250             | 1,200             | 980                  | 1,030             |
| MO                      | 1,200             | 1,105             | 530               | 480               | 480               | 450               | 350                  | 320               |
| NE                      | 970               | 980               | 650               | 660               | 470               | 470               | 405                  | 390               |
| NC                      | 3,520             | 3,450             | 2,150             | 2,130             | 1,700             | 1,720             | 1,510                | 1,490             |
| OH                      | 535               | 550               | 310               | 330               | 270               | 295               | 180                  | 220               |
| OK                      | 970               | 920               | 340               | 320               | 230               | 240               | 490                  | 530               |
| PA                      | 280               | 310               | 275               | 280               | 215               | 215               | 195                  | 195               |
| SD                      | 410               | 450               | 300               | 325               | 260               | 290               | 230                  | 260               |
| TX                      | 300               | 270               | 200               | 195               | 205               | 180               | 185                  | 185               |
| WI                      | 135               | 150               | 90                | 85                | 80                | 75                | 75                   | 65                |
| Oth<br>Sts <sup>2</sup> | 1,135             | 1,175             | 799               | 854               | 706               | 748               | 651                  | 652               |
| US                      | 19,980            | 20,055            | 13,439            | 13,524            | 11,186            | 11,293            | 10,401               | 10,567            |

<sup>1</sup> Weight groups may not add to Market due to rounding.

<sup>2</sup> Individual State estimates not available for the 33 other States.

**Farrowings: Number of Sows, Pigs per Litter, and Pig Crop  
by State and United States, December-February 2005-2007<sup>1,2</sup>**

| State                | Sows Farrowing    |                   |                   |                | Pigs Per Litter |               | Pig Crop <sup>3</sup> |                   |                |
|----------------------|-------------------|-------------------|-------------------|----------------|-----------------|---------------|-----------------------|-------------------|----------------|
|                      | 2005              | 2006              | 2007 <sup>4</sup> |                | 2005            | 2006          | 2005                  | 2006              |                |
|                      |                   |                   | Number            | as % of 2006   |                 |               |                       | Number            | as % of 2005   |
|                      | <i>1,000 Head</i> | <i>1,000 Head</i> | <i>1,000 Head</i> | <i>Percent</i> | <i>Number</i>   | <i>Number</i> | <i>1,000 Head</i>     | <i>1,000 Head</i> | <i>Percent</i> |
| AR                   | 43                | 41                | 39                | 95             | 9.55            | 9.50          | 411                   | 390               | 95             |
| CO                   | 75                | 81                | 81                | 100            | 8.55            | 8.80          | 641                   | 713               | 111            |
| IL                   | 210               | 195               | 210               | 108            | 8.90            | 9.00          | 1,869                 | 1,755             | 94             |
| IN                   | 130               | 130               | 150               | 115            | 8.80            | 8.95          | 1,144                 | 1,164             | 102            |
| IA                   | 440               | 455               | 450               | 99             | 8.90            | 9.00          | 3,916                 | 4,095             | 105            |
| KS                   | 80                | 84                | 88                | 105            | 8.70            | 8.85          | 696                   | 743               | 107            |
| MI                   | 44                | 48                | 50                | 104            | 9.00            | 9.30          | 396                   | 446               | 113            |
| MN                   | 275               | 270               | 275               | 102            | 9.10            | 9.10          | 2,503                 | 2,457             | 98             |
| MO                   | 170               | 165               | 165               | 100            | 9.05            | 9.00          | 1,539                 | 1,485             | 96             |
| NE                   | 175               | 175               | 170               | 97             | 9.00            | 9.15          | 1,575                 | 1,601             | 102            |
| NC                   | 540               | 540               | 540               | 100            | 8.85            | 9.10          | 4,779                 | 4,914             | 103            |
| OH                   | 77                | 76                | 83                | 109            | 9.00            | 9.10          | 693                   | 692               | 100            |
| OK                   | 190               | 185               | 180               | 97             | 8.80            | 8.70          | 1,672                 | 1,610             | 96             |
| PA                   | 47                | 47                | 51                | 109            | 9.50            | 9.90          | 447                   | 465               | 104            |
| SD                   | 72                | 77                | 79                | 103            | 9.40            | 9.40          | 677                   | 724               | 107            |
| TX                   | 43                | 42                | 48                | 114            | 9.20            | 8.60          | 396                   | 361               | 91             |
| WI                   | 24                | 26                | 26                | 100            | 8.75            | 8.55          | 210                   | 222               | 106            |
| Oth Sts <sup>5</sup> | 200               | 203               | 217               | 107            | 8.91            | 8.97          | 1,779                 | 1,821             | 102            |
| US                   | 2,835             | 2,840             | 2,902             | 102            | 8.94            | 9.03          | 25,343                | 25,658            | 101            |

<sup>1</sup> December preceding year.

<sup>2</sup> May not add due to rounding.

<sup>3</sup> Number of pigs born December-February that were still on hand March 1, or had been sold.

<sup>4</sup> Intentions.

<sup>5</sup> Individual State estimates not available for the 33 Other States.



**Farrowings: Number of Sows, Pigs per Litter, and Pig Crop  
by State and United States, March-May 2005-2006 <sup>1</sup>**

| State                | Sows Farrowing    |                   |                | Pigs per Litter |               | Pig Crop <sup>2</sup> |                   |                |
|----------------------|-------------------|-------------------|----------------|-----------------|---------------|-----------------------|-------------------|----------------|
|                      | 2005              | 2006              |                | 2005            | 2006          | 2005                  | 2006              |                |
|                      |                   | Number            | as % of 2005   |                 |               |                       | Number            | as % of 2005   |
|                      | <i>1,000 Head</i> | <i>1,000 Head</i> | <i>Percent</i> | <i>Number</i>   | <i>Number</i> | <i>1,000 Head</i>     | <i>1,000 Head</i> | <i>Percent</i> |
| AR                   | 42                | 41                | 98             | 9.70            | 9.60          | 407                   | 394               | 97             |
| CO                   | 77                | 81                | 105            | 8.80            | 8.90          | 678                   | 721               | 106            |
| IL                   | 210               | 205               | 98             | 8.95            | 9.05          | 1,880                 | 1,855             | 99             |
| IN                   | 135               | 135               | 100            | 8.85            | 8.90          | 1,195                 | 1,202             | 101            |
| IA                   | 440               | 455               | 103            | 9.05            | 8.95          | 3,982                 | 4,072             | 102            |
| KS                   | 83                | 81                | 98             | 8.80            | 9.10          | 730                   | 737               | 101            |
| MI                   | 45                | 46                | 102            | 9.00            | 9.20          | 405                   | 423               | 104            |
| MN                   | 290               | 280               | 97             | 9.15            | 9.30          | 2,654                 | 2,604             | 98             |
| MO                   | 170               | 170               | 100            | 9.10            | 9.10          | 1,547                 | 1,547             | 100            |
| NE                   | 175               | 180               | 103            | 9.05            | 9.15          | 1,584                 | 1,647             | 104            |
| NC                   | 550               | 550               | 100            | 8.90            | 9.10          | 4,895                 | 5,005             | 102            |
| OH                   | 77                | 79                | 103            | 9.00            | 9.00          | 693                   | 711               | 103            |
| OK                   | 190               | 185               | 97             | 8.90            | 8.90          | 1,691                 | 1,647             | 97             |
| PA                   | 47                | 46                | 98             | 9.10            | 9.10          | 428                   | 419               | 98             |
| SD                   | 75                | 82                | 109            | 9.30            | 9.35          | 698                   | 767               | 110            |
| TX                   | 45                | 44                | 98             | 9.40            | 9.25          | 423                   | 407               | 96             |
| WI                   | 25                | 27                | 108            | 8.75            | 8.70          | 219                   | 235               | 107            |
| Oth Sts <sup>3</sup> | 206               | 210               | 102            | 9.13            | 9.09          | 1,877                 | 1,908             | 102            |
| US                   | 2,882             | 2,897             | 101            | 9.02            | 9.08          | 25,986                | 26,301            | 101            |

<sup>1</sup> May not add due to rounding.

<sup>2</sup> Number of pigs born March-May that were still on hand June 1, or had been sold.

<sup>3</sup> Individual State estimates not available for the 33 other States.

**Farrowings: Number of Sows, Pigs per Litter, and Pig Crop  
by State and United States, June-August 2005-2006 <sup>1</sup>**

| State                | Sows Farrowing    |                   |                | Pigs per Litter |               | Pig Crop <sup>2</sup> |                   |                |
|----------------------|-------------------|-------------------|----------------|-----------------|---------------|-----------------------|-------------------|----------------|
|                      | 2005              | 2006              |                | 2005            | 2006          | 2005                  | 2006              |                |
|                      |                   | Number            | as % of 2005   |                 |               |                       | Number            | as % of 2005   |
|                      | <i>1,000 Head</i> | <i>1,000 Head</i> | <i>Percent</i> | <i>Number</i>   | <i>Number</i> | <i>1,000 Head</i>     | <i>1,000 Head</i> | <i>Percent</i> |
| AR                   | 44                | 41                | 93             | 9.60            | 9.70          | 422                   | 398               | 94             |
| CO                   | 81                | 83                | 102            | 8.80            | 9.00          | 713                   | 747               | 105            |
| IL                   | 205               | 205               | 100            | 8.90            | 9.05          | 1,825                 | 1,855             | 102            |
| IN                   | 140               | 140               | 100            | 8.90            | 8.95          | 1,246                 | 1,253             | 101            |
| IA                   | 460               | 455               | 99             | 9.00            | 9.10          | 4,140                 | 4,141             | 100            |
| KS                   | 83                | 85                | 102            | 8.80            | 8.80          | 730                   | 748               | 102            |
| MI                   | 48                | 47                | 98             | 9.25            | 9.20          | 444                   | 432               | 97             |
| MN                   | 280               | 280               | 100            | 9.30            | 9.30          | 2,604                 | 2,604             | 100            |
| MO                   | 170               | 170               | 100            | 9.05            | 9.10          | 1,539                 | 1,547             | 101            |
| NE                   | 175               | 175               | 100            | 9.05            | 9.15          | 1,584                 | 1,601             | 101            |
| NC                   | 560               | 560               | 100            | 9.10            | 9.15          | 5,096                 | 5,124             | 101            |
| OH                   | 78                | 85                | 109            | 9.10            | 9.20          | 710                   | 782               | 110            |
| OK                   | 200               | 190               | 95             | 8.90            | 9.00          | 1,780                 | 1,710             | 96             |
| PA                   | 47                | 46                | 98             | 9.40            | 8.80          | 442                   | 405               | 92             |
| SD                   | 71                | 80                | 113            | 9.40            | 9.40          | 667                   | 752               | 113            |
| TX                   | 45                | 50                | 111            | 9.10            | 9.65          | 410                   | 483               | 118            |
| WI                   | 25                | 26                | 104            | 8.70            | 8.85          | 218                   | 230               | 106            |
| Oth Sts <sup>3</sup> | 206               | 206               | 100            | 9.12            | 9.30          | 1,879                 | 1,915             | 102            |
| US                   | 2,918             | 2,924             | 100            | 9.06            | 9.14          | 26,449                | 26,727            | 101            |

<sup>1</sup> May not add due to rounding.

<sup>2</sup> Number of pigs born June-August that were still on hand September 1, or had been sold.

<sup>3</sup> Individual State estimates not available for the 33 Other States.

**Farrowings: Number of Sows, Pigs per Litter, and Pig Crop  
by State and United States, September-November 2004-2006<sup>1</sup>**

| State                | Sows Farrowing    |                   |                   |                | Pigs per Litter |               | Pig Crop <sup>2</sup> |                   |                |
|----------------------|-------------------|-------------------|-------------------|----------------|-----------------|---------------|-----------------------|-------------------|----------------|
|                      | 2004              | 2005              | 2006 <sup>3</sup> |                | 2004            | 2005          | 2004                  | 2005              |                |
|                      |                   |                   | Number            | as % of 2005   |                 |               |                       | Number            | as % of 2004   |
|                      | <i>1,000 Head</i> | <i>1,000 Head</i> | <i>1,000 Head</i> | <i>Percent</i> | <i>Number</i>   | <i>Number</i> | <i>1,000 Head</i>     | <i>1,000 Head</i> | <i>Percent</i> |
| AR                   | 42                | 42                | 41                | 98             | 9.50            | 9.70          | 399                   | 407               | 102            |
| CO                   | 73                | 81                | 83                | 102            | 8.45            | 8.80          | 617                   | 713               | 116            |
| IL                   | 210               | 200               | 215               | 108            | 8.85            | 8.85          | 1,859                 | 1,770             | 95             |
| IN                   | 135               | 135               | 145               | 107            | 8.85            | 9.00          | 1,195                 | 1,215             | 102            |
| IA                   | 460               | 455               | 460               | 101            | 8.90            | 9.00          | 4,094                 | 4,095             | 100            |
| KS                   | 83                | 84                | 88                | 105            | 8.80            | 8.70          | 730                   | 731               | 100            |
| MI                   | 46                | 47                | 49                | 104            | 9.20            | 9.20          | 423                   | 432               | 102            |
| MN                   | 285               | 280               | 275               | 98             | 9.10            | 9.25          | 2,594                 | 2,590             | 100            |
| MO                   | 170               | 175               | 170               | 97             | 8.95            | 8.95          | 1,522                 | 1,566             | 103            |
| NE                   | 170               | 175               | 175               | 100            | 9.00            | 9.05          | 1,530                 | 1,584             | 104            |
| NC                   | 550               | 550               | 540               | 98             | 9.00            | 9.00          | 4,950                 | 4,950             | 100            |
| OH                   | 77                | 81                | 82                | 101            | 9.00            | 9.10          | 693                   | 737               | 106            |
| OK                   | 190               | 190               | 185               | 97             | 8.90            | 8.90          | 1,691                 | 1,691             | 100            |
| PA                   | 49                | 47                | 50                | 106            | 9.50            | 9.80          | 466                   | 461               | 99             |
| SD                   | 71                | 81                | 81                | 100            | 9.20            | 9.30          | 653                   | 753               | 115            |
| TX                   | 46                | 44                | 48                | 109            | 8.95            | 8.90          | 412                   | 392               | 95             |
| WI                   | 25                | 27                | 26                | 96             | 8.80            | 8.65          | 220                   | 234               | 106            |
| Oth Sts <sup>4</sup> | 206               | 206               | 212               | 103            | 8.91            | 9.04          | 1,833                 | 1,866             | 102            |
| US                   | 2,888             | 2,900             | 2,925             | 101            | 8.96            | 9.03          | 25,881                | 26,187            | 101            |

<sup>1</sup> May not add due to rounding.

<sup>2</sup> Number of pigs born September-November that were still on hand December 1, or had been sold.

<sup>3</sup> Intentions.

<sup>4</sup> Individual State estimates not available for the 33 other States.

**Monthly Farrowings: Number of Sows, Pigs per Litter, and Pig Crop,  
United States, December-November 2005-2006<sup>1 2</sup>**

| Month            | Sows Farrowing    |                   | Pigs per Litter |               | Pig Crop          |                   |
|------------------|-------------------|-------------------|-----------------|---------------|-------------------|-------------------|
|                  | 2005              | 2006              | 2005            | 2006          | 2005              | 2006              |
|                  | <i>1,000 Head</i> | <i>1,000 Head</i> | <i>Number</i>   | <i>Number</i> | <i>1,000 Head</i> | <i>1,000 Head</i> |
| Dec <sup>1</sup> | 938               | 937               | 8.89            | 8.98          | 8,338             | 8,412             |
| Jan              | 951               | 953               | 8.94            | 9.07          | 8,500             | 8,648             |
| Feb              | 946               | 950               | 8.99            | 9.05          | 8,505             | 8,598             |
| Mar              | 967               | 973               | 8.99            | 9.03          | 8,693             | 8,782             |
| Apr              | 962               | 956               | 9.00            | 9.09          | 8,656             | 8,691             |
| May              | 953               | 968               | 9.06            | 9.12          | 8,637             | 8,828             |
| Jun              | 968               | 974               | 9.07            | 9.13          | 8,779             | 8,888             |
| Jul              | 978               | 970               | 9.04            | 9.13          | 8,845             | 8,859             |
| Aug              | 972               | 980               | 9.08            | 9.16          | 8,825             | 8,980             |
| Sep              | 982               |                   | 9.04            |               | 8,874             |                   |
| Oct              | 970               |                   | 9.05            |               | 8,777             |                   |
| Nov              | 948               |                   | 9.00            |               | 8,536             |                   |
| Total            | 11,535            |                   | 9.01            |               | 103,965           |                   |

<sup>1</sup> December preceding year.

<sup>2</sup> Monthly values may not add to quarterly or annual totals due to rounding.

## Reliability of September 1 Hogs and Pigs Estimates

**Survey Procedures:** A random sample of roughly 10,000 U.S. producers was surveyed to provide data for these estimates. Survey procedures ensured that all hog and pig producers, regardless of size, had a chance to be included in the survey. Large producers were sampled more heavily than small operations. During the first half of September data were collected from about 8,000 operations, 80 percent of the total sample. The data collected were received by electronic data reporting (EDR), mail, telephone, and face-to-face personal interviews. Regardless of when operations responded, they were asked to report inventories as of September 1.

**Estimation Procedures:** These hogs and pigs estimates were prepared by the Agricultural Statistics Board after reviewing recommendations and analysis submitted by each field office. National and State survey data were reviewed for reasonableness with each other and with estimates from past years using a balance sheet. The balance sheet begins with the previous inventory estimate, adds the estimates of births and imports, and subtracts the estimates of slaughter, exports, and deaths. This indicated ending inventory level is compared to the Agricultural Statistics Board estimate for reasonableness.

**Revision Policy:** Revisions to previous estimates are made to improve quarter to quarter relationships. Estimates for the previous four quarters are subject to revision when current estimates are made. In December, estimates for all quarters of the current and previous year are reviewed. The reviews are primarily based on hog check-off receipts and slaughter. Estimates will also be reviewed after data from the Department of Agriculture five-year census of agriculture are available. No revisions will be made after that date.

**Reliability:** Since all operations raising hogs are not included in the sample, survey estimates are subject to sampling variability. Survey results are also subject to non-sampling errors such as omissions, duplication, and mistakes in reporting, recording, and processing the data. The affects of these errors cannot be measured directly. They are minimized through rigid quality controls in the data collection process and through a careful review of all reported data for consistency and reasonableness.

To assist users in evaluating the reliability of the estimates in this report, the "**Root Mean Square Error**" is shown for selected items in the following table. The "Root Mean Square Error" is a statistical measure based on past performance and is computed using the difference between first and final estimates. The "Root Mean Square Error" for hog inventory estimates over the past 20 quarters is 1.0 percent. This means that chances are 2 out of 3 that the final estimate will not be above or below the current estimate of 62.7 million head by more than 1.0 percent. Chances are 9 out of 10 that the difference will not exceed 1.7 percent.

**Reliability of September 1 Hog Estimates <sup>1</sup>**

| Item                | Root Mean Square Error | 90% Confidence Level |       | Difference Between First and Latest Estimates |                   |                   | Quarters           |                    |
|---------------------|------------------------|----------------------|-------|---|-------------------|-------------------|--------------------|--------------------|
|                     |                        |                      |       | Average                                       | Smallest          | Largest           | First Above Latest | First Below Latest |
|                     |                        |                      |       | <i>1,000 Head</i>                             | <i>1,000 Head</i> | <i>1,000 Head</i> | <i>Number</i>      | <i>Number</i>      |
| All Hogs & Pigs     | 1.0                    | 1.7                  | 1,066 | 492   | 72                | 1,386             | 2                  | 18                 |
| Pig Crop            | 1.3                    | 2.3                  | 615   | 258   | 0                 | 824               | 1                  | 18                 |
| Expected Farrowings |                        |                      |       |   |                   |                   |                    |                    |
| Next Quarter        | 1.3                    | 2.2                  | 64    | 30  | 1                 | 91                | 6                  | 14                 |
| Following Quarter   | 1.7                    | 2.9                  | 84    | 39  | 2                 | 126               | 8                  | 12                 |

<sup>1</sup> Based on quarterly records for the past 20 quarters.

**Information Contacts**

Listed below are the commodity specialists in the Livestock Branch of the National Agricultural Statistics Service to contact for additional information.

Dan Kerestes, Chief, Livestock Branch ..... (202) 720-3570

**Livestock Section**

William Weaver, Head, Livestock Section ..... (202) 720-3570  
 Bruce Boess - Hogs and Pigs ..... (202) 720-3106  
 Shawn Clark - Dairy Products ..... (202) 690-3236  
 Jason Hardegree - Milk Production and Milk Cows ..... (202) 720-3278  
 Scott Hollis - Sheep & Lambs, Goats ..... (202) 720-4751  
 Mike Miller - Cattle, Cattle on Feed ..... (202) 720-3040  
 Katy Paulsen - Livestock Slaughter ..... (515) 284-4340  
 Charmaine Wilson - Dairy Products Prices ..... (202) 690-2168

## ACCESS TO REPORTS!!

---

For your convenience, there are several ways to obtain NASS reports, data products, and services:

### INTERNET ACCESS

All NASS reports are available free of charge on the worldwide Internet. For access, connect to the Internet and go to the NASS Home Page at: **www.nass.usda.gov**.

### E-MAIL SUBSCRIPTION

All NASS reports are available by subscription free of charge direct to your e-mail address. Starting with the NASS Home Page at **www.nass.usda.gov**, under the right navigation, *Receive reports by Email*, click on **National** or **State**. Follow the instructions on the screen.

-----

### PRINTED REPORTS OR DATA PRODUCTS

**CALL OUR TOLL-FREE ORDER DESK: 800-999-6779 (U.S. and Canada)**  
**Other areas, please call 703-605-6220      FAX: 703-605-6900**  
**(Visa, MasterCard, check, or money order acceptable for payment.)**

-----

### ASSISTANCE

For **assistance** with general agricultural statistics or further information about NASS or its products or services, contact the **Agricultural Statistics Hotline** at **800-727-9540**, 7:30 a.m. to 4:00 p.m. ET, or e-mail: **nass@nass.usda.gov**.

The U.S. Department of Agriculture (USDA) prohibits discrimination in all its programs and activities on the basis of race, color, national origin, age, disability, and where applicable, sex, marital status, familial status, parental status, religion, sexual orientation, genetic information, political beliefs, reprisal, or because all or part of an individual's income is derived from any public assistance program. (Not all prohibited bases apply to all programs.) Persons with disabilities who require alternative means for communication of program information (Braille, large print, audiotape, etc.) should contact USDA's TARGET Center at (202) 720-2600 (voice and TDD).

To file a complaint of discrimination, write to USDA, Director, Office of Civil Rights, 1400 Independence Avenue, S.W., Washington, D.C. 20250-9410, or call (800) 795-3272 (voice) or (202) 720-6382 (TDD). USDA is an equal opportunity provider and employer.

## **USDA Data Users' Meeting**

**October 16, 2006**

**Doubletree Chicago O'Hare Airport - Rosemont**

**Chicago, Illinois**

**(847) 292-9100**

The USDA's National Agricultural Statistics Service will be organizing an open forum for data users. The purpose will be to provide updates on pending changes in the various statistical and information programs and seek comments and input from data users. Other USDA agencies to be represented will include the Agricultural Marketing Service, the Economic Research Service, the Foreign Agricultural Service, and World Agricultural Outlook Board. The Foreign Trade Division from the Census Bureau will also be included in the meeting.

For registration details or additional information for the Data Users' Meeting, see the NASS homepage at [www.nass.usda.gov/forum/](http://www.nass.usda.gov/forum/) or contact Amy Jenkins (NASS) at (202) 690-8141 or at [amy\\_jenkins@nass.usda.gov](mailto:amy_jenkins@nass.usda.gov).

This Data Users' Meeting precedes an Industry Outlook meeting that will be held at the same location on October 17, 2006. The Outlook meeting brings together analysts from various commodity sectors to discuss the outlook situation. For more information about the outlook meeting and to register contact Jim Robb (Livestock and Marketing Information Center) at (720) 544-2941 or at [robb@lmic.info](mailto:robb@lmic.info).