



NASS

FACT FINDERS FOR AGRICULTURE
UNITED STATES DEPARTMENT OF AGRICULTURE

Washington, D.C.

Quarterly Hogs and Pigs

Released December 27, 2006, by the National Agricultural Statistics Service (NASS), Agricultural Statistics Board, U.S. Department of Agriculture. For information on *Quarterly Hogs and Pigs* call Bruce Boess at 202-720-3106, office hours 7:30 a.m. to 4:00 p.m. ET.

U.S. Hog Inventory Up 1 Percent

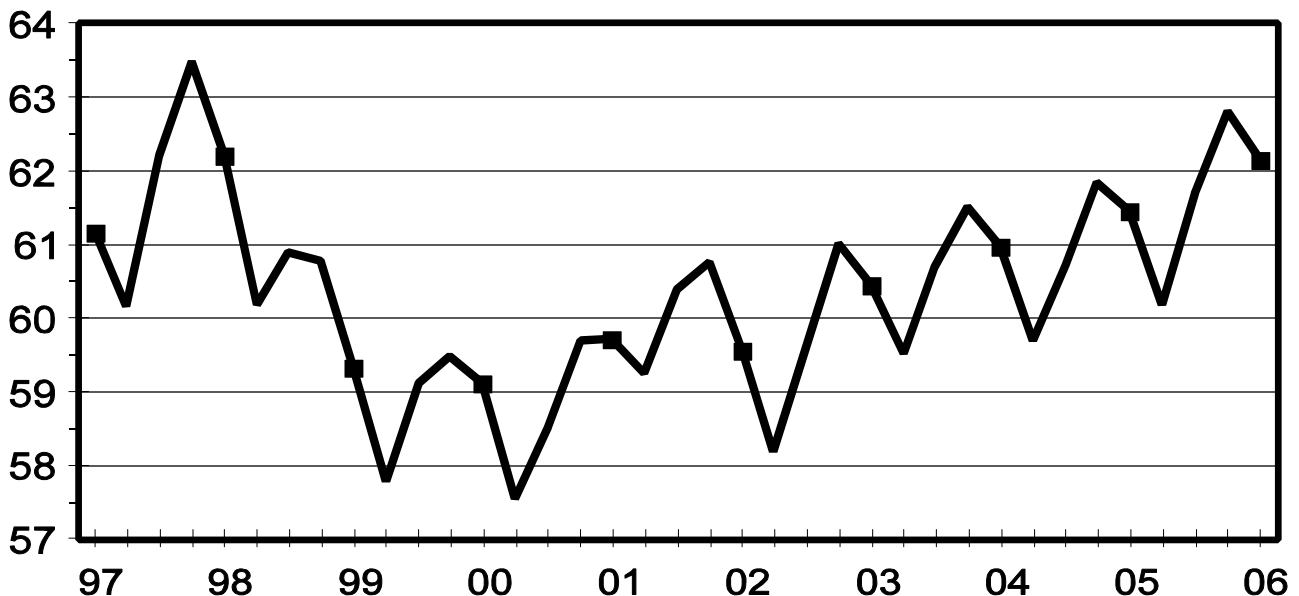
U.S. inventory of all hogs and pigs on December 1, 2006 was 62.1 million head. This was up 1 percent from December 1, 2005, but down 1 percent from September 1, 2006.

Breeding inventory, at 6.09 million head, was up 1 percent from last year and up slightly from the previous quarter. **Market hog inventory**, at 56.1 million head, was up 1 percent from last year, but down 1 percent from last quarter.

The September-November 2006 pig crop, at 26.6 million head, was up 1 percent from 2005 and up 3 percent from 2004. Sows farrowing during this period totaled 2.91 million head, up slightly from 2005 and up 1 percent from 2004. The sows farrowed during this quarter represented 48 percent of the breeding herd. The average pigs saved per litter was 9.13 for the September-November 2006 period, compared to 9.03 last year. Pigs saved per litter by size of operation ranged from 7.60 for operations with 1-99 hogs and pigs to 9.20 for operations with more than 5,000 hogs and pigs.

U.S. Quarterly Hogs and Pigs Inventory December 1

Million Head



U.S. hog producers intend to have 2.90 million sows farrow during the December 2006-February 2007 quarter, up 2 percent from the actual farrowings during the same period in both 2006 and 2005. Intended farrowings for March-May 2007, at 2.93 million sows, are up 1 percent from 2006 and up 2 percent from 2005.

The total number of hogs under contract, owned by operations with over 5,000 head, but raised by contractees, accounted for 38 percent of the total U.S. hog inventory, down from 39 percent last year.

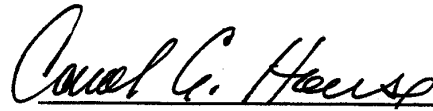
Revisions

All inventory and pig crop estimates for March 2005 through September 2006 were reviewed using final pig crop, official slaughter, death loss, and updated import and export data. Based on the findings of this review, a small adjustment of less than one-half of one percent was made to the June 2006 inventory and September 2006 inventory, along with an adjustment of slightly larger than one-half of one percent to the March-May 2006 pig crop.

This report was approved on December 27, 2006.



Acting Secretary of
Agriculture
Charles F. Conner



Agricultural Statistics Board
Chairperson
Carol C. House

Contents

Page

Quarterly U.S. Inventory by Class and Weight Group, 2004-2006	1
Quarterly U.S. Sows Farrowed, Pig Crop, and Pigs per Litter, 2004-2007	2
Hogs and Pigs: Inventory by State and U.S., 2005-2006	
December 1	5
March 1	7
June 1	9
September 1	11
Farrowings: Number of Sows, Pigs per Litter, Pig Crop by State and U.S., 2005-2007	
December-November	13
December-February	14
March-May	15
June-August	16
September-November	17
Monthly U.S. Farrowings, December-November 2005-2006	18
Reliability Statement	19

**Hogs and Pigs: Inventory Number by Class, Weight Group,
and Quarter, United States, 2004-2006 ¹**

Item	2004	2005	2006	2006 as % of	
				2004	2005
	<i>1,000 Head</i>	<i>1,000 Head</i>	<i>1,000 Head</i>	<i>Percent</i>	<i>Percent</i>
March 1 Inventory					
All Hogs and Pigs	59,520	59,699	60,176	101	101
Kept for Breeding	5,961	5,941	6,025	101	101
Market	53,558	53,757	54,151	101	101
Market Hogs and Pigs by Weight Groups					
Under 60 Pounds	19,823	19,667	19,988	101	102
60-119 Pounds	12,954	13,087	13,006	100	99
120-179 Pounds	11,205	11,360	11,334	101	100
180 Pounds and Over	9,578	9,644	9,824	103	102
June 1 Inventory					
All Hogs and Pigs	60,698	60,732	61,687	102	102
Kept for Breeding	5,937	5,977	6,060	102	101
Market	54,760	54,754	55,627	102	102
Market Hogs and Pigs by Weight Groups					
Under 60 Pounds	20,292	20,423	20,808	103	102
60-119 Pounds	13,500	13,376	13,692	101	102
120-179 Pounds	11,256	11,143	11,485	102	103
180 Pounds and Over	9,714	9,813	9,643	99	98
September 1 Inventory					
All Hogs and Pigs	61,519	61,846	62,814	102	102
Kept for Breeding	5,962	5,972	6,079	102	102
Market	55,556	55,873	56,735	102	102
Market Hogs and Pigs by Weight Groups					
Under 60 Pounds	20,729	20,764	20,998	101	101
60-119 Pounds	13,613	13,876	13,991	103	101
120-179 Pounds	11,235	11,404	11,585	103	102
180 Pounds and Over	9,981	9,830	10,162	102	103
December 1 Inventory					
All Hogs and Pigs	60,975	61,449	62,149	102	101
Kept for Breeding	5,969	6,011	6,088	102	101
Market	55,005	55,438	56,061	102	101
Market Hogs and Pigs by Weight Groups					
Under 60 Pounds	19,980	20,055	20,334	102	101
60-119 Pounds	13,439	13,524	13,603	101	101
120-179 Pounds	11,186	11,293	11,544	103	102
180 Pounds and Over	10,401	10,567	10,580	102	100

¹ May not add due to rounding.

**Farrowings: Number of Sows, Pig Crop, and Pigs per Litter,
United States, 2004-2007 ¹**

Item	2004	2005	2006	2007	2006 as % of		2007 as Percent of 2006
					2004	2005	
	<i>1,000 Head</i>	<i>1,000 Head</i>	<i>1,000 Head</i>	<i>1,000 Head</i>	<i>Percent</i>	<i>Percent</i>	<i>Percent</i>
Sows Farrowing							
Dec-Feb ^{2,3}	2,836	2,835	2,840	2,902	100	100	102
Mar-May ³	2,870	2,882	2,916	2,932	102	101	101
Dec-May ^{2,3}	5,706	5,716	5,756	5,834	101	101	101
Jun-Aug	2,905	2,918	2,924		101	100	
Sep-Nov	2,888	2,900	2,909		101	100	
Jun-Nov	5,793	5,818	5,834		101	100	
Pig Crop							
Dec-Feb ²	25,105	25,343	25,661		102	101	
Mar-May	25,633	25,986	26,480		103	102	
Dec-May ²	50,737	51,330	52,141		103	102	
Jun-Aug	26,162	26,449	26,731		102	101	
Sep-Nov	25,881	26,187	26,551		103	101	
Jun-Nov	52,043	52,635	53,282		102	101	
	<i>Number</i>	<i>Number</i>	<i>Number</i>	<i>Number</i>	<i>Percent</i>	<i>Percent</i>	<i>Percent</i>
Pigs per Litter							
Dec-Feb ²	8.85	8.94	9.03		102	101	
Mar-May	8.93	9.02	9.08		102	101	
Dec-May ²	8.89	8.98	9.06		102	101	
Jun-Aug	9.01	9.06	9.14		101	101	
Sep-Nov	8.96	9.03	9.13		102	101	
Jun-Nov	8.98	9.05	9.13		102	101	

¹ May not add due to rounding.

² December preceding year.

³ Intentions for 2007.

Pigs per Litter: By Size of Operation, United States, 2005-2006 ¹

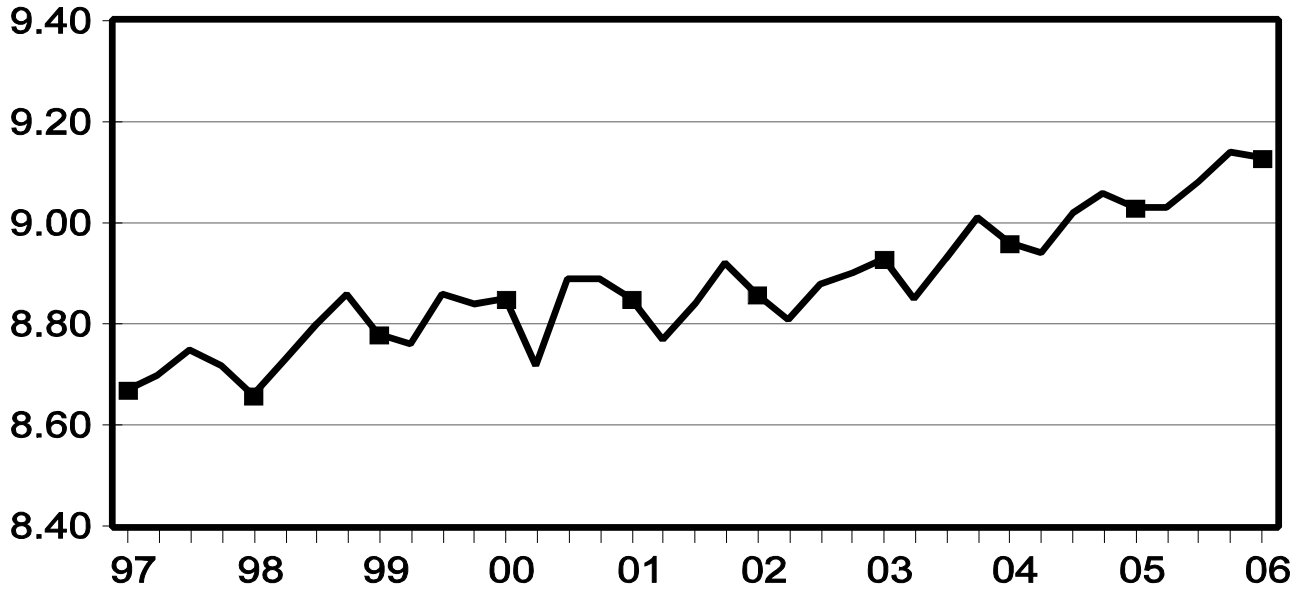
Pig Crop	Pigs per Litter on Operations Having					
	1-99 Head	100-499 Head	500-999 Head	1,000-1,999 Head	2,000-4,999 Head	5,000+ Head
	<i>Number</i>	<i>Number</i>	<i>Number</i>	<i>Number</i>	<i>Number</i>	<i>Number</i>
2005						
Dec-Feb ²	7.50	7.80	8.30	8.80	8.90	9.00
Mar-May	7.50	7.90	8.30	8.80	9.00	9.10
Jun-Aug	7.60	7.90	8.70	8.80	9.00	9.10
Sep-Nov	7.50	8.00	8.50	8.70	9.00	9.10
2006						
Dec-Feb ²	7.50	8.00	8.30	8.80	9.00	9.10
Mar-May	7.60	8.00	8.40	8.80	9.00	9.20
Jun-Aug	7.70	8.00	8.40	8.80	9.10	9.20
Sep-Nov	7.60	8.10	8.30	8.70	9.00	9.20

¹ Pigs per litter rounded to the nearest tenth.

² December preceding year.

U.S. Quarterly Litter Rate September-November

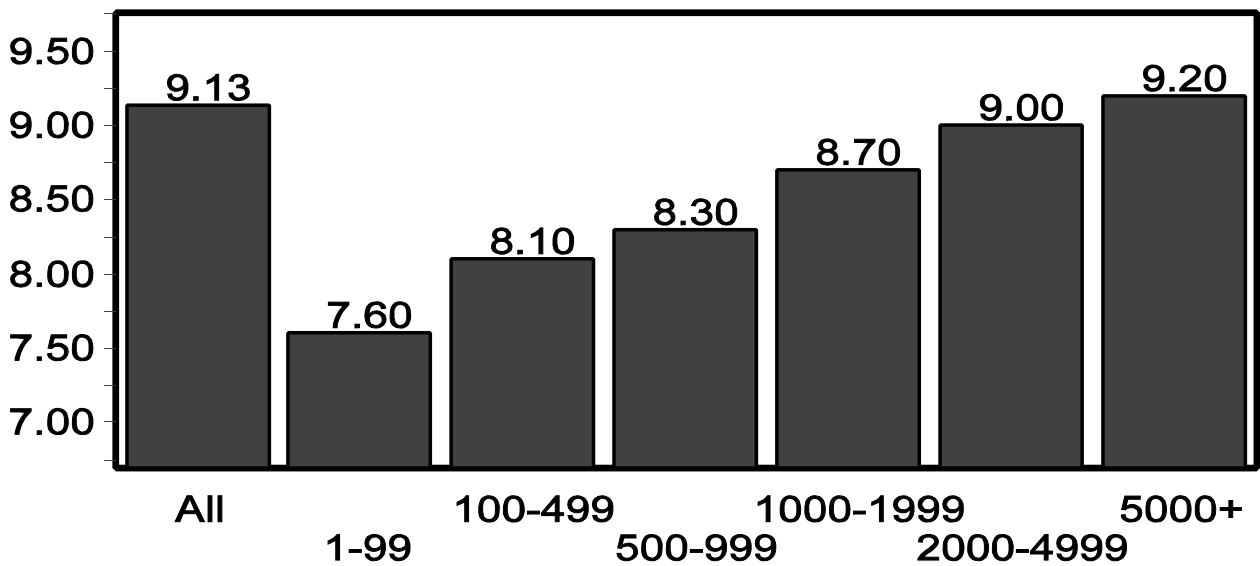
Number Head



U.S. Pigs per Litter

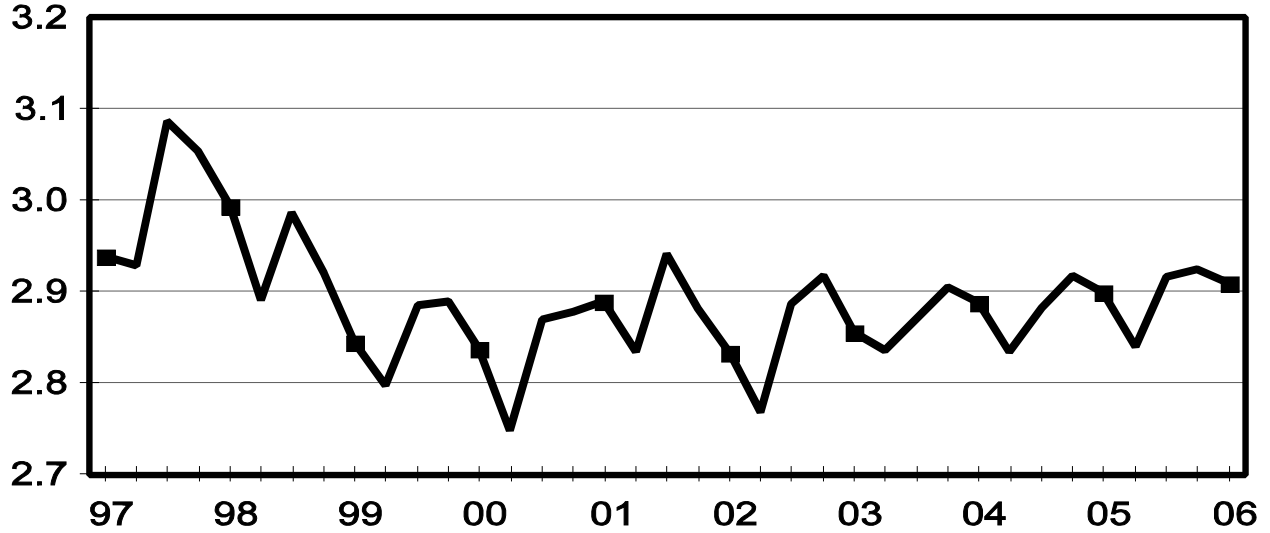
By Size of Operation, September-November 2006

Number Head



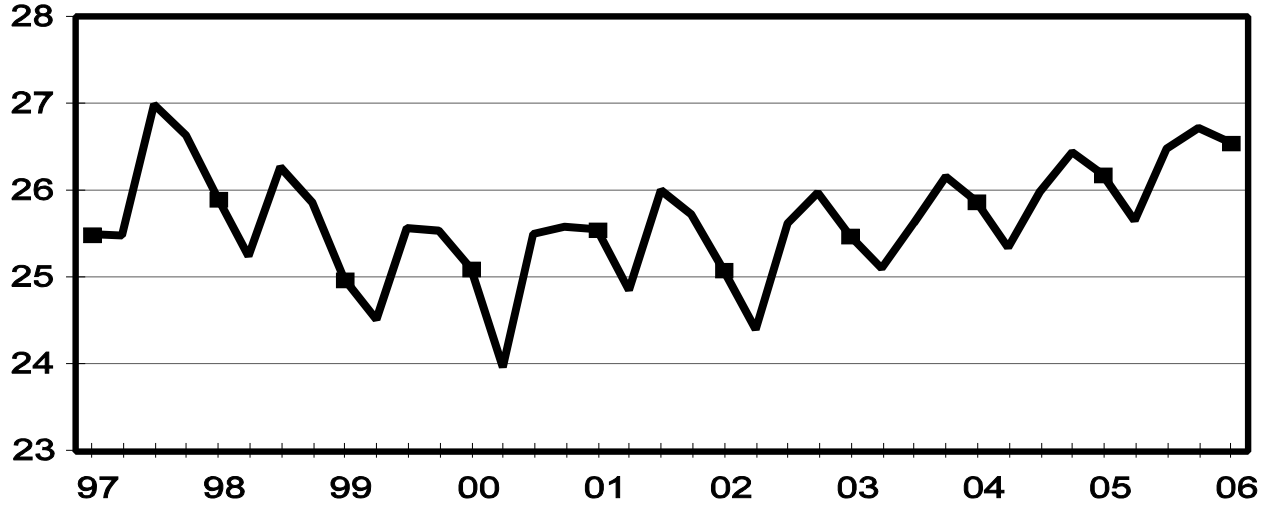
U.S. Quarterly Sows Farrowed September-November

Million Head



U.S. Quarterly Pig Crop September-November

Million Head



**Hogs and Pigs: Breeding, Market, and Total Inventory
by State and United States, December 1, 2005-2006 ¹**

State	Breeding			Market			Total		
	2005	2006		2005	2006		2005	2006	
		Number	as % of 2005		Number	as % of 2005		Number	as % of 2005
	<i>1,000 Head</i>	<i>1,000 Head</i>	<i>Percent</i>	<i>1,000 Head</i>	<i>1,000 Head</i>	<i>Percent</i>	<i>1,000 Head</i>	<i>1,000 Head</i>	<i>Percent</i>
AL	17	19	112	143	146	102	160	165	103
AK	0.3	0.3	100	1.3	0.6	46	1.6	0.9	56
AZ	15	16	107	127	132	104	142	148	104
AR	85	85	100	185	175	95	270	260	96
CA	20	20	100	125	130	104	145	150	103
CO	145	155	107	705	675	96	850	830	98
CT	0.7	0.7	100	2.8	2.9	104	3.5	3.6	103
DE	3.5	2.5	71	13.0	8.0	62	16.5	10.5	64
FL	4.0	4.0	100	16.0	16.0	100	20.0	20.0	100
GA	43	38	88	227	207	91	270	245	91
HI	5.0	4.1	82	14.0	11.9	85	19.0	16.0	84
ID	4.0	5.0	125	17.0	20.0	118	21.0	25.0	119
IL	430	440	102	3,570	3,760	105	4,000	4,200	105
IN	310	330	106	2,940	2,970	101	3,250	3,300	102
IA	1,070	1,080	101	15,530	16,120	104	16,600	17,200	104
KS	160	170	106	1,630	1,670	102	1,790	1,840	103
KY	40	35	88	330	275	83	370	310	84
LA	2.0	2.0	100	12.0	12.0	100	14.0	14.0	100
ME	1.2	1.1	92	3.8	3.7	97	5.0	4.8	96
MD	5.0	7.0	140	30.0	27.0	90	35.0	34.0	97
MA	2.0	1.5	75	11.0	11.5	105	13.0	13.0	100
MI	100	110	110	860	890	103	960	1,000	104
MN	590	590	100	6,010	6,210	103	6,600	6,800	103
MS	39	35	90	336	300	89	375	335	89
MO	345	360	104	2,355	2,390	101	2,700	2,750	102
MT	18	18	100	157	162	103	175	180	103
NE	350	365	104	2,500	2,635	105	2,850	3,000	105
NV	0.5	0.4	80	3.5	3.1	89	4.0	3.5	88
NH	0.5	0.5	100	2.7	2.3	85	3.2	2.8	88
NJ	1.0	0.5	50	8.0	6.5	81	9.0	7.0	78
NM	0.2	0.2	100	1.8	1.8	100	2.0	2.0	100
NY	10.0	12.0	120	73.0	86.0	118	83.0	98.0	118
NC	1,010	1,010	100	8,790	8,490	97	9,800	9,500	97
ND	31	33	106	126	136	108	157	169	108
OH	165	170	103	1,395	1,510	108	1,560	1,680	108
OK	360	350	97	2,010	1,980	99	2,370	2,330	98
OR	4.0	5.0	125	19.0	20.0	105	23.0	25.0	109
PA	100	105	105	1,000	965	97	1,100	1,070	97
RI	0.5	0.5	100	1.3	1.4	108	1.8	1.9	106
SC	30	30	100	285	265	93	315	295	94
SD	165	140	85	1,325	1,190	90	1,490	1,330	89
TN	20	22	110	170	198	116	190	220	116
TX	100	95	95	830	835	101	930	930	100
UT	92	103	112	598	577	96	690	680	99
VT	0.4	0.5	125	1.9	2.0	105	2.3	2.5	109
VA	35	30	86	455	330	73	490	360	73
WA	5.0	4.0	80	25.0	32.0	128	30.0	36.0	120
WV	2.0	2.0	100	6.0	9.0	150	8.0	11.0	138
WI	55	55	100	375	385	103	430	440	102
WY	19	25	132	86	75	87	105	100	95
US	6,011	6,088	101	55,438	56,061	101	61,449	62,149	101

¹ May not add due to rounding.

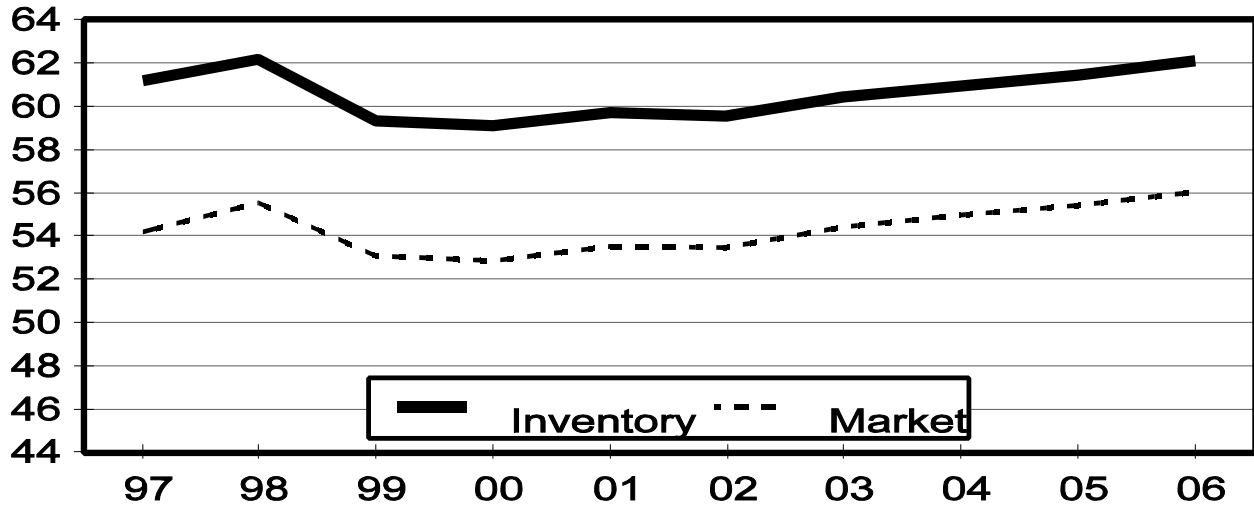
**Market Hogs and Pigs: Inventory Number by Weight Group,
State, and United States, December 1, 2005-2006 ¹**

State	Under 60 Lbs.		60-119 Lbs.		120-179 Lbs.		180 Lbs. and Over	
	2005	2006	2005	2006	2005	2006	2005	2006
	<i>1,000 Head</i>	<i>1,000 Head</i>	<i>1,000 Head</i>	<i>1,000 Head</i>	<i>1,000 Head</i>	<i>1,000 Head</i>	<i>1,000 Head</i>	<i>1,000 Head</i>
AL	60	62	30	29	27	26	26	29
AK	0.4	0.2	0.6	0.2	0.2	0.1	0.1	0.1
AZ	46	49	27	28	27	27	27	28
AR	130	125	20	15	15	15	20	20
CA	40	42	35	40	25	20	25	28
CO	390	370	95	80	85	90	135	135
CT	1.5	1.3	0.7	0.8	0.4	0.4	0.2	0.4
DE	5.0	4.0	2.5	1.0	3.0	2.0	2.5	1.0
FL	8.0	7.0	4.0	4.0	2.0	4.0	2.0	1.0
GA	97	96	51	46	40	35	39	30
HI	6.0	5.5	3.9	3.0	2.4	2.0	1.7	1.4
ID	6.0	9.0	5.0	5.0	3.0	3.0	3.0	3.0
IL	1,300	1,270	860	930	740	820	670	740
IN	1,060	1,090	730	740	560	590	590	550
IA	4,610	4,870	4,180	4,400	3,520	3,620	3,220	3,230
KS	570	560	315	310	315	325	430	475
KY	105	90	85	70	75	60	65	55
LA	4.0	4.0	3.0	3.0	2.0	2.0	3.0	3.0
ME	2.1	1.7	0.8	1.1	0.4	0.4	0.5	0.5
MD	12.0	10.0	3.0	6.0	7.0	7.0	8.0	4.0
MA	5.0	4.2	2.6	3.4	1.7	2.4	1.7	1.5
MI	315	300	205	220	175	170	165	200
MN	2,320	2,370	1,460	1,490	1,200	1,290	1,030	1,060
MS	83	125	85	69	83	53	85	53
MO	1,105	1,110	480	460	450	485	320	335
MT	50	53	40	40	34	35	33	34
NE	980	1,010	660	690	470	520	390	415
NV	0.9	0.7	1.0	0.9	0.9	0.8	0.7	0.7
NH	1.0	0.8	0.4	0.4	0.6	0.2	0.7	0.9
NJ	1.0	1.0	2.0	2.0	2.0	1.5	3.0	2.0
NM	0.5	0.5	0.5	0.5	0.5	0.5	0.3	0.3
NY	24.0	23.0	16.0	22.0	17.0	21.0	16.0	20.0
NC	3,450	3,410	2,130	1,940	1,720	1,710	1,490	1,430
ND	50	58	30	36	23	22	23	20
OH	550	590	330	350	295	335	220	235
OK	920	900	320	340	240	240	530	500
OR	6.0	6.5	5.0	6.0	4.0	4.0	4.0	3.5
PA	310	290	280	290	215	190	195	195
RI	0.4	0.5	0.4	0.4	0.3	0.3	0.2	0.2
SC	60	60	80	80	70	65	75	60
SD	450	435	325	270	290	240	260	245
TN	60	73	40	40	35	40	35	45
TX	270	270	195	200	180	190	185	175
UT	260	273	146	129	136	115	56	60
VT	0.9	0.7	0.4	0.4	0.2	0.3	0.4	0.6
VA	140	110	125	90	100	70	90	60
WA	9.0	8.0	7.0	9.0	5.0	9.0	4.0	6.0
WV	2.0	2.0	1.0	2.0	1.0	2.0	2.0	3.0
WI	150	155	85	90	75	70	65	70
WY	28	27	20	20	19	13	19	15
US	20,055	20,334	13,524	13,603	11,293	11,544	10,567	10,580

¹ Weight groups may not add to Market due to rounding.

U.S. Hog Inventory & Market Hogs December 1

Million Head



**Hogs and Pigs: Breeding, Market, and Total Inventory
by State and United States, March 1, 2005-2006 ¹**

State	Breeding			Market			Total		
	2005	2006		2005	2006		2005	2006	
		Number	as % of 2005		Number	as % of 2005		Number	as % of 2005
	<i>1,000 Head</i>	<i>1,000 Head</i>	<i>Percent</i>	<i>1,000 Head</i>	<i>1,000 Head</i>	<i>Percent</i>	<i>1,000 Head</i>	<i>1,000 Head</i>	<i>Percent</i>
AR	85	85	100	245	185	76	330	270	82
CO	140	150	107	670	680	101	810	830	102
IL	430	420	98	3,570	3,680	103	4,000	4,100	103
IN	290	310	107	2,710	2,790	103	3,000	3,100	103
IA	1,080	1,100	102	15,020	15,200	101	16,100	16,300	101
KS	155	165	106	1,525	1,565	103	1,680	1,730	103
MI	100	100	100	820	860	105	920	960	104
MN	590	580	98	5,710	5,820	102	6,300	6,400	102
MO	330	345	105	2,520	2,355	93	2,850	2,700	95
NE	355	355	100	2,395	2,545	106	2,750	2,900	105
NC	1,010	1,020	101	8,690	8,480	98	9,700	9,500	98
OH	160	160	100	1,340	1,380	103	1,500	1,540	103
OK	360	360	100	2,020	1,970	98	2,380	2,330	98
PA	105	100	95	995	1,010	102	1,100	1,110	101
SD	145	155	107	1,215	1,285	106	1,360	1,440	106
TX	95	100	105	815	830	102	910	930	102
WI	50	50	100	380	370	97	430	420	98
Oth Sts ²	461	470	102	3,117	3,146	101	3,579	3,616	101
US	5,941	6,025	101	53,757	54,151	101	59,699	60,176	101

¹ May not add due to rounding.

² Individual State estimates not available for the 33 Other States.

**Market Hogs and Pigs: Inventory Number by Weight Group,
State, and United States, March 1, 2005-2006 ¹**

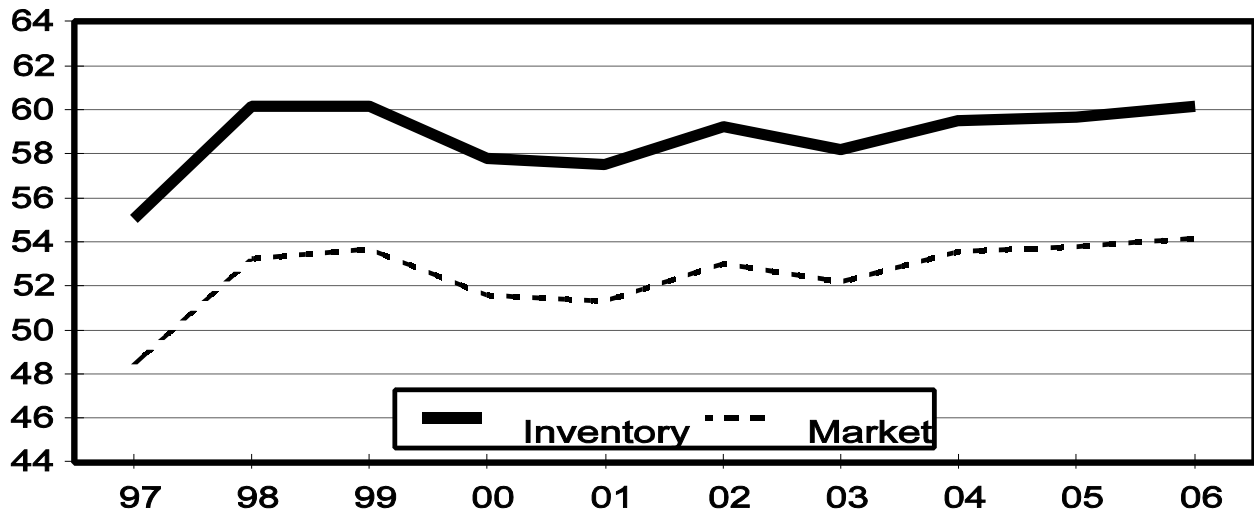
State	Under 60 Lbs.		60-119 Lbs.		120-179 Lbs.		180 Lbs. and Over	
	2005	2006	2005	2006	2005	2006	2005	2006
	<i>1,000 Head</i>	<i>1,000 Head</i>	<i>1,000 Head</i>	<i>1,000 Head</i>	<i>1,000 Head</i>	<i>1,000 Head</i>	<i>1,000 Head</i>	<i>1,000 Head</i>
AR	145	140	35	15	30	15	35	15
CO	365	360	115	90	85	80	105	150
IL	1,360	1,310	840	870	760	820	610	680
IN	1,000	1,030	650	700	570	560	490	500
IA	4,330	4,680	4,230	4,140	3,490	3,440	2,970	2,940
KS	540	530	255	285	280	345	450	405
MI	325	315	190	200	160	175	145	170
MN	2,230	2,280	1,390	1,330	1,250	1,310	840	900
MO	1,190	1,085	520	490	480	460	330	320
NE	970	1,000	600	660	470	490	355	395
NC	3,410	3,400	2,030	1,940	1,830	1,690	1,420	1,450
OH	550	570	310	315	300	305	180	190
OK	960	910	330	350	260	220	470	490
PA	290	370	290	270	230	210	185	160
SD	430	455	295	300	270	275	220	255
TX	295	265	190	190	160	195	170	180
WI	145	145	90	90	80	70	65	65
Oth Sts ²	1,132	1,143	727	771	655	674	604	559
US	19,667	19,988	13,087	13,006	11,360	11,334	9,644	9,824

¹ Weight groups may not add to Market due to rounding.

² Individual State estimates not available for the 33 Other States.

U.S. Hog Inventory & Market Hogs March 1

Million Head



**Hogs and Pigs: Breeding, Market, and Total Inventory
by State and United States, June 1, 2005-2006¹**

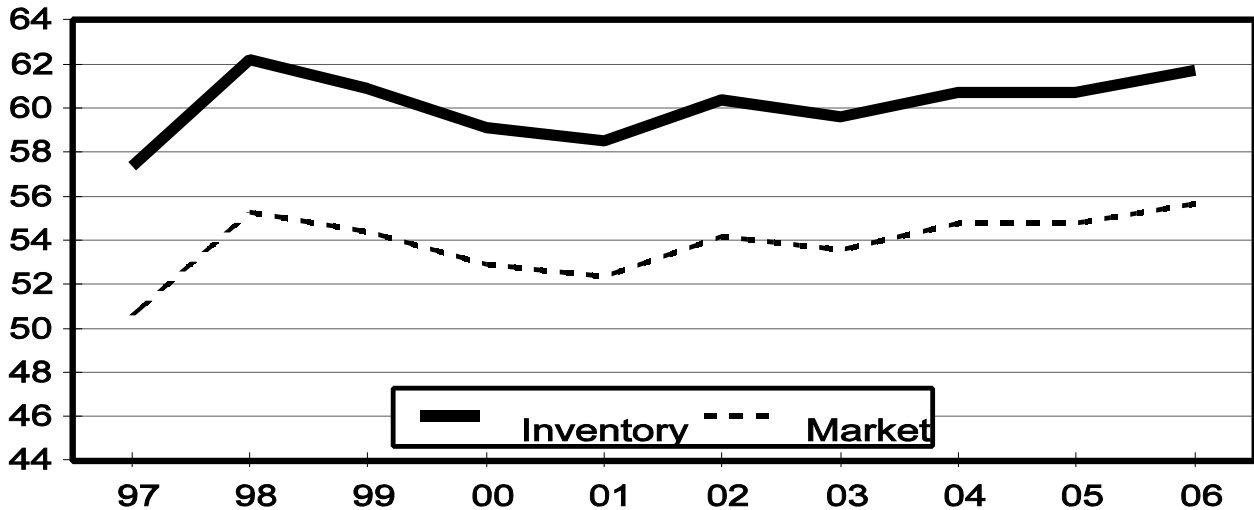
State	Breeding			Market			Total		
	2005	2006		2005	2006		2005	2006	
		Number	as % of 2005		Number	as % of 2005		Number	as % of 2005
	<i>1,000 Head</i>	<i>1,000 Head</i>	<i>Percent</i>	<i>1,000 Head</i>	<i>1,000 Head</i>	<i>Percent</i>	<i>1,000 Head</i>	<i>1,000 Head</i>	<i>Percent</i>
AR	85	85	100	205	195	95	290	280	97
CO	140	150	107	640	690	108	780	840	108
IL	430	430	100	3,670	3,770	103	4,100	4,200	102
IN	300	320	107	2,800	2,880	103	3,100	3,200	103
IA	1,070	1,080	101	15,130	15,520	103	16,200	16,600	102
KS	155	160	103	1,535	1,680	109	1,690	1,840	109
MI	100	100	100	810	880	109	910	980	108
MN	600	590	98	6,000	6,210	104	6,600	6,800	103
MO	340	350	103	2,510	2,350	94	2,850	2,700	95
NE	355	365	103	2,445	2,585	106	2,800	2,950	105
NC	1,020	1,020	100	8,880	8,580	97	9,900	9,600	97
OH	160	165	103	1,420	1,455	102	1,580	1,620	103
OK	360	360	100	2,020	2,010	100	2,380	2,370	100
PA	100	100	100	970	1,000	103	1,070	1,100	103
SD	145	160	110	1,255	1,310	104	1,400	1,470	105
TX	100	105	105	830	865	104	930	970	104
WI	50	55	110	380	375	99	430	430	100
Oth Sts ²	467	465	99	3,254	3,272	101	3,722	3,737	100
US	5,977	6,060	101	54,754	55,627	102	60,732	61,687	102

¹ May not add due to rounding.

² Individual State estimates not available for the 33 Other States.

U.S. Hog Inventory & Market Hogs June 1

Million Head



**Market Hogs and Pigs: Inventory Number by Weight Group,
State, and United States, June 1, 2005-2006 ¹**

State	Under 60 Lbs.		60-119 Lbs.		120-179 Lbs.		180 Lbs. and Over	
	2005	2006	2005	2006	2005	2006	2005	2006
	<i>1,000 Head</i>	<i>1,000 Head</i>	<i>1,000 Head</i>	<i>1,000 Head</i>	<i>1,000 Head</i>	<i>1,000 Head</i>	<i>1,000 Head</i>	<i>1,000 Head</i>
AR	140	140	20	20	20	15	25	20
CO	355	360	110	85	60	95	115	150
IL	1,340	1,350	900	940	770	840	660	640
IN	1,040	1,080	700	760	550	550	510	490
IA	4,600	4,860	4,130	4,240	3,500	3,530	2,900	2,890
KS	550	585	305	360	280	310	400	425
MI	310	335	200	195	155	175	145	175
MN	2,410	2,460	1,440	1,550	1,220	1,310	930	890
MO	1,230	1,135	480	490	450	420	350	305
NE	960	1,000	640	680	490	530	355	375
NC	3,560	3,540	2,140	1,960	1,720	1,690	1,460	1,390
OH	580	590	340	360	300	320	200	185
OK	960	930	330	330	230	270	500	480
PA	285	330	290	290	225	215	170	165
SD	465	475	320	310	250	275	220	250
TX	325	275	150	220	160	205	195	165
WI	150	145	90	105	70	70	70	55
Oth Sts ²	1,163	1,218	791	797	693	665	608	593
US	20,423	20,808	13,376	13,692	11,143	11,485	9,813	9,643

¹ Weight groups may not add to Market due to rounding.

² Individual State estimates not available for the 33 Other States.

**Hogs and Pigs: Breeding, Market, and Total Inventory
by State and United States, September 1, 2005-2006¹**

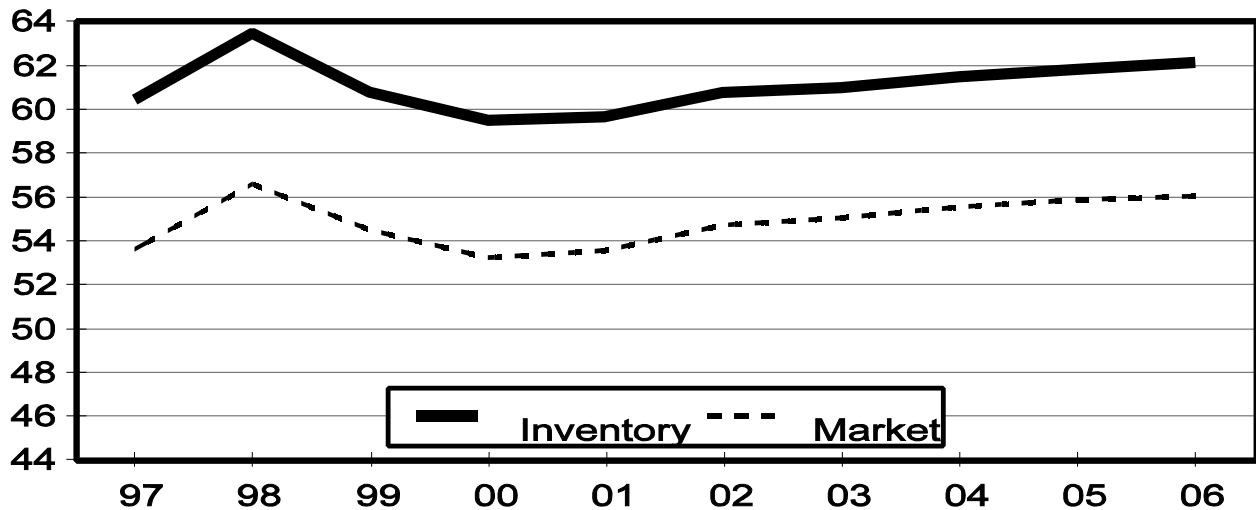
State	Breeding			Market			Total		
	2005	2006		2005	2006		2005	2006	
		Number	as % of 2005		Number	as % of 2005		Number	as % of 2005
	<i>1,000 Head</i>	<i>1,000 Head</i>	<i>Percent</i>	<i>1,000 Head</i>	<i>1,000 Head</i>	<i>Percent</i>	<i>1,000 Head</i>	<i>1,000 Head</i>	<i>Percent</i>
AR	85	85	100	200	195	98	285	280	98
CO	145	155	107	715	695	97	860	850	99
IL	420	440	105	3,630	3,910	108	4,050	4,350	107
IN	300	330	110	2,800	2,970	106	3,100	3,300	106
IA	1,080	1,080	100	15,520	15,920	103	16,600	17,000	102
KS	155	165	106	1,565	1,745	112	1,720	1,910	111
MI	100	100	100	830	880	106	930	980	105
MN	600	590	98	6,200	6,310	102	6,800	6,900	101
MO	340	355	104	2,510	2,395	95	2,850	2,750	96
NE	350	350	100	2,450	2,600	106	2,800	2,950	105
NC	1,020	1,010	99	9,080	8,690	96	10,100	9,700	96
OH	160	170	106	1,400	1,490	106	1,560	1,660	106
OK	360	360	100	2,060	2,030	99	2,420	2,390	99
PA	95	105	111	985	1,045	106	1,080	1,150	106
SD	140	155	111	1,240	1,325	107	1,380	1,480	107
TX	100	100	100	890	880	99	990	980	99
WI	50	55	110	370	375	101	420	430	102
Oth Sts ²	472	474	100	3,428	3,280	96	3,901	3,754	96
US	5,972	6,079	102	55,873	56,735	102	61,846	62,814	102

¹ May not add due to rounding.

² Individual State estimates not available for the 33 Other States.

U.S. Hog Inventory & Market Hogs September 1

Million Head



**Market Hogs and Pigs: Inventory Number by Weight Group,
State, and United States, September 1, 2005-2006 ¹**

State	Under 60 Lbs.		60-119 Lbs.		120-179 Lbs.		180 Lbs. and Over	
	2005	2006	2005	2006	2005	2006	2005	2006
	<i>1,000 Head</i>	<i>1,000 Head</i>	<i>1,000 Head</i>	<i>1,000 Head</i>	<i>1,000 Head</i>	<i>1,000 Head</i>	<i>1,000 Head</i>	<i>1,000 Head</i>
AR	145	145	20	15	15	15	20	20
CO	400	385	110	85	85	85	120	140
IL	1,380	1,370	890	980	800	850	560	710
IN	1,050	1,090	720	760	550	580	480	540
IA	4,780	4,850	4,400	4,470	3,450	3,550	2,890	3,050
KS	535	600	355	380	265	300	410	465
MI	320	305	195	215	165	180	150	180
MN	2,450	2,490	1,500	1,560	1,320	1,300	930	960
MO	1,180	1,115	520	480	470	470	340	330
NE	980	1,020	660	670	460	520	350	390
NC	3,650	3,560	2,130	2,010	1,780	1,710	1,520	1,410
OH	580	610	335	360	290	320	195	200
OK	930	960	300	320	270	260	560	490
PA	300	340	270	290	220	230	195	185
SD	440	485	315	315	255	275	230	250
TX	290	320	210	195	195	180	195	185
WI	145	150	90	85	70	75	65	65
Oth Sts ²	1,209	1,203	856	801	744	685	620	592
US	20,764	20,998	13,876	13,991	11,404	11,585	9,830	10,162

¹ Weight groups may not add to Market due to rounding.

² Individual State estimates not available for the 33 Other States.

**Annual Farrowings: Number of Sows, Pigs per Litter, and Pig Crop
by State and United States, December-November 2005-2006^{1 2}**

State	Sows Farrowing			Pigs per Litter		Pig Crop		
	2005	2006		2005	2006	2005	2006	
		Number	as % of 2005				Number	as % of 2005
	<i>1,000 Head</i>	<i>1,000 Head</i>	<i>Percent</i>	<i>Number</i>	<i>Number</i>	<i>1,000 Head</i>	<i>1,000 Head</i>	<i>Percent</i>
AL	32.0	32.0	100	8.91	8.66	285.0	277.0	97
AK	0.32	0.26	81	9.41	9.19	3.01	2.39	79
AZ	30.0	31.0	103	9.20	9.00	276.0	279.0	101
AR	171	160	94	9.63	9.64	1,647	1,543	94
CA	32.0	34.0	106	9.56	10.00	306.0	340.0	111
CO	314	329	105	8.74	8.88	2,745	2,920	106
CT	0.70	0.60	86	8.10	7.60	5.67	4.56	80
DE	6.00	6.00	100	9.33	9.33	56.00	56.00	100
FL	8.00	8.00	100	7.25	7.00	58.00	56.00	97
GA	84.0	83.0	99	8.81	8.90	740.0	739.0	100
HI	4.00	3.40	85	7.00	7.35	28.00	25.00	89
ID	3.90	5.60	144	8.72	8.93	34.00	50.00	147
IL	825	820	99	8.90	9.05	7,344	7,422	101
IN	540	545	101	8.89	8.91	4,800	4,858	101
IA	1,795	1,835	102	8.99	9.03	16,133	16,561	103
KS	330	338	102	8.75	8.90	2,887	3,007	104
KY	78.0	75.0	96	8.92	9.08	696.0	681.0	98
LA	3.60	3.70	103	7.50	7.03	27.00	26.00	96
ME	1.60	1.40	88	7.30	6.40	11.68	8.96	77
MD	10.00	8.00	80	8.40	8.00	84.00	64.00	76
MA	2.50	1.60	64	8.08	8.30	20.20	13.28	66
MI	184	193	105	9.11	9.16	1,677	1,768	105
MN	1,125	1,105	98	9.20	9.25	10,351	10,223	99
MS	70.0	74.5	106	8.86	9.33	620.0	695.0	112
MO	685	675	99	9.04	9.05	6,191	6,109	99
MT	33.0	34.0	103	9.67	9.56	319.0	325.0	102
NE	700	710	101	9.04	9.17	6,327	6,514	103
NV	0.66	0.62	94	7.45	7.45	4.92	4.62	94
NH	0.70	0.60	86	8.00	7.00	5.60	4.20	75
NJ	0.40	0.60	150	7.00	6.33	2.80	3.80	136
NM	0.40	0.40	100	8.50	8.50	3.40	3.40	100
NY	14.60	15.60	107	8.90	9.55	130.00	149.00	115
NC	2,200	2,200	100	8.96	9.13	19,720	20,076	102
ND	50.0	55.5	111	9.42	9.55	471.0	530.0	113
OH	313	325	104	9.05	9.13	2,833	2,967	105
OK	770	745	97	8.88	8.90	6,834	6,632	97
OR	5.80	6.20	107	6.72	8.39	39.00	52.00	133
PA	188	183	97	9.46	9.21	1,778	1,685	95
RI	0.50	0.50	100	8.50	8.00	4.25	4.00	94
SC	54.0	55.0	102	9.30	9.24	502.0	508.0	101
SD	299	310	104	9.35	9.40	2,795	2,914	104
TN	40.0	37.0	93	8.58	8.89	343.0	329.0	96
TX	177	182	103	9.16	9.14	1,621	1,664	103
UT	139.0	140.0	101	9.53	10.01	1,325.0	1,401.0	106
VT	0.50	0.60	120	7.70	7.70	3.85	4.62	120
VA	59.0	62.0	105	9.22	8.84	544.0	548.0	101
WA	6.40	5.60	88	8.44	8.57	54.00	48.00	89
WV	2.10	2.20	105	7.00	7.00	14.70	15.40	105
WI	101	107	106	8.72	8.75	881	936	106
WY	44.0	43.5	99	8.73	8.67	384.0	377.0	98
US	11,535	11,590	100	9.01	9.10	103,965	105,423	101

¹ December preceding year.

² May not add due to rounding.

**Farrowings: Number of Sows, Pigs per Litter, and Pig Crop
by State and United States, December-February 2005-2007^{1 2}**

State	Sows Farrowing				Pigs Per Litter		Pig Crop ³		
	2005	2006	2007 ⁴		2005	2006	2005	2006	
			Number	as % of 2006				Number	as % of 2005
	<i>1,000 Head</i>	<i>1,000 Head</i>	<i>1,000 Head</i>	<i>Percent</i>	<i>Number</i>	<i>Number</i>	<i>1,000 Head</i>	<i>1,000 Head</i>	<i>Percent</i>
AR	43	41	40	98	9.55	9.50	411	390	95
CO	75	81	84	104	8.55	8.80	641	713	111
IL	210	195	220	113	8.90	9.00	1,869	1,755	94
IN	130	130	145	112	8.80	8.90	1,144	1,157	101
IA	440	455	450	99	8.90	9.00	3,916	4,095	105
KS	80	84	88	105	8.70	8.85	696	743	107
MI	44	48	50	104	9.00	9.30	396	446	113
MN	275	270	270	100	9.10	9.10	2,503	2,457	98
MO	170	165	175	106	9.05	9.00	1,539	1,485	96
NE	175	175	180	103	9.00	9.15	1,575	1,601	102
NC	540	540	540	100	8.85	9.10	4,779	4,914	103
OH	77	77	82	106	9.00	9.10	693	701	101
OK	190	185	185	100	8.80	8.70	1,672	1,610	96
PA	47	47	48	102	9.50	9.90	447	465	104
SD	72	77	69	90	9.40	9.40	677	724	107
TX	43	42	44	105	9.20	8.60	396	361	91
WI	24	26	25	96	8.75	8.55	210	222	106
Oth Sts ⁵	200	202	207	102	8.91	9.00	1,779	1,822	102
US	2,835	2,840	2,902	102	8.94	9.03	25,343	25,661	101

¹ December preceding year.

² May not add due to rounding.

³ Number of pigs born December-February that were still on hand March 1, or had been sold.

⁴ Intentions.

⁵ Individual State estimates not available for the 33 Other States.

**Farrowings: Number of Sows, Pigs per Litter, and Pig Crop
by State and United States, March-May 2005-2007 ¹**

State	Sows Farrowing				Pigs per Litter		Pig Crop ²		
	2005	2006	2007 ³		2005	2006	2005	2006	
			Number	as % of 2006				Number	as % of 2005
	<i>1,000 Head</i>	<i>1,000 Head</i>	<i>1,000 Head</i>	<i>Percent</i>	<i>Number</i>	<i>Number</i>	<i>1,000 Head</i>	<i>1,000 Head</i>	<i>Percent</i>
AR	42	41	40	98	9.70	9.60	407	394	97
CO	77	81	84	104	8.80	8.90	678	721	106
IL	210	210	215	102	8.95	9.05	1,880	1,901	101
IN	135	135	145	107	8.85	8.90	1,195	1,202	101
IA	440	460	470	102	9.05	8.95	3,982	4,117	103
KS	83	82	89	109	8.80	9.10	730	746	102
MI	45	47	52	111	9.00	9.20	405	432	107
MN	290	280	270	96	9.15	9.30	2,654	2,604	98
MO	170	170	175	103	9.10	9.10	1,547	1,547	100
NE	175	180	180	100	9.05	9.15	1,584	1,647	104
NC	550	550	540	98	8.90	9.10	4,895	5,005	102
OH	77	80	85	106	9.00	9.00	693	720	104
OK	190	185	185	100	8.90	8.90	1,691	1,647	97
PA	47	47	48	102	9.10	9.10	428	428	100
SD	75	83	71	86	9.30	9.35	698	776	111
TX	45	46	46	100	9.40	9.25	423	426	101
WI	25	27	28	104	8.75	8.70	219	235	107
Oth Sts ⁴	206	212	209	99	9.13	9.11	1,877	1,932	103
US	2,882	2,916	2,932	101	9.02	9.08	25,986	26,480	102

¹ May not add due to rounding.

² Number of pigs born March-May that were still on hand June 1, or had been sold.

³ Intentions.

⁴ Individual State estimates not available for the 33 Other States.

**Farrowings: Number of Sows, Pigs per Litter, and Pig Crop
by State and United States, June-August 2005-2006 ¹**

State	Sows Farrowing			Pigs per Litter		Pig Crop ²		
	2005	2006		2005	2006	2005	2006	
		Number	as % of 2005				Number	as % of 2005
	<i>1,000 Head</i>	<i>1,000 Head</i>	<i>Percent</i>	<i>Number</i>	<i>Number</i>	<i>1,000 Head</i>	<i>1,000 Head</i>	<i>Percent</i>
AR	44	41	93	9.60	9.70	422	398	94
CO	81	83	102	8.80	9.00	713	747	105
IL	205	205	100	8.90	9.05	1,825	1,855	102
IN	140	140	100	8.90	8.95	1,246	1,253	101
IA	460	455	99	9.00	9.10	4,140	4,141	100
KS	83	85	102	8.80	8.80	730	748	102
MI	48	48	100	9.25	9.20	444	442	100
MN	280	280	100	9.30	9.30	2,604	2,604	100
MO	170	170	100	9.05	9.10	1,539	1,547	101
NE	175	175	100	9.05	9.15	1,584	1,601	101
NC	560	560	100	9.10	9.15	5,096	5,124	101
OH	78	85	109	9.10	9.20	710	782	110
OK	200	190	95	8.90	9.00	1,780	1,710	96
PA	47	46	98	9.40	8.80	442	405	92
SD	71	80	113	9.40	9.40	667	752	113
TX	45	50	111	9.10	9.65	410	483	118
WI	25	26	104	8.70	8.85	218	230	106
Oth Sts ³	206	205	100	9.12	9.31	1,879	1,909	102
US	2,918	2,924	100	9.06	9.14	26,449	26,731	101

¹ May not add due to rounding.

² Number of pigs born June-August that were still on hand September 1, or had been sold.

³ Individual State estimates not available for the 33 Other States.

**Farrowings: Number of Sows, Pigs per Litter, and Pig Crop
by State and United States, September-November 2005-2006¹**

State	Sows Farrowing			Pigs per Litter		Pig Crop ²		
	2005	2006		2005	2006	2005	2006	
		Number	as % of 2005				Number	as % of 2005
	<i>1,000 Head</i>	<i>1,000 Head</i>	<i>Percent</i>	<i>Number</i>	<i>Number</i>	<i>1,000 Head</i>	<i>1,000 Head</i>	<i>Percent</i>
AR	42	37	88	9.70	9.75	407	361	89
CO	81	84	104	8.80	8.80	713	739	104
IL	200	210	105	8.85	9.10	1,770	1,911	108
IN	135	140	104	9.00	8.90	1,215	1,246	103
IA	455	465	102	9.00	9.05	4,095	4,208	103
KS	84	87	104	8.70	8.85	731	770	105
MI	47	50	106	9.20	8.95	432	448	104
MN	280	275	98	9.25	9.30	2,590	2,558	99
MO	175	170	97	8.95	9.00	1,566	1,530	98
NE	175	180	103	9.05	9.25	1,584	1,665	105
NC	550	550	100	9.00	9.15	4,950	5,033	102
OH	81	83	102	9.10	9.20	737	764	104
OK	190	185	97	8.90	9.00	1,691	1,665	98
PA	47	43	91	9.80	9.00	461	387	84
SD	81	70	86	9.30	9.45	753	662	88
TX	44	44	100	8.90	8.95	392	394	101
WI	27	28	104	8.65	8.90	234	249	106
Oth Sts ³	206	208	101	9.04	9.41	1,866	1,961	105
US	2,900	2,909	100	9.03	9.13	26,187	26,551	101

¹ May not add due to rounding.

² Number of pigs born September-November that were still on hand December 1, or had been sold.

³ Individual State estimates not available for the 33 Other States.

**Monthly Farrowings: Number of Sows, Pigs per Litter, and Pig Crop,
United States, December-November 2005-2006^{1 2}**

Month	Sows Farrowing		Pigs per Litter		Pig Crop	
	2005	2006	2005	2006	2005	2006
	<i>1,000 Head</i>	<i>1,000 Head</i>	<i>Number</i>	<i>Number</i>	<i>1,000 Head</i>	<i>1,000 Head</i>
Dec ¹	938	937	8.89	8.98	8,338	8,412
Jan	951	952	8.94	9.08	8,500	8,648
Feb	946	951	8.99	9.05	8,505	8,607
Mar	967	979	8.99	9.04	8,693	8,848
Apr	962	967	9.00	9.06	8,656	8,765
May	953	970	9.06	9.14	8,637	8,868
Jun	968	974	9.07	9.14	8,779	8,901
Jul	978	970	9.04	9.13	8,845	8,859
Aug	972	980	9.08	9.15	8,825	8,971
Sep	982	986	9.04	9.12	8,874	8,996
Oct	970	972	9.05	9.14	8,777	8,888
Nov	948	951	9.00	9.11	8,536	8,667
Total	11,535	11,590	9.01	9.10	103,965	105,430

¹ December preceding year.

² Monthly values may not add to quarterly or annual totals due to rounding.

Reliability of December 1 Hogs and Pigs Estimates

Survey Procedures: A random sample of roughly 12,100 U.S. producers was surveyed to provide data for these estimates. Survey procedures ensured that all hog and pig producers, regardless of size, had a chance to be included in the survey. Large producers were sampled more heavily than small operations. During the first half of December data were collected from about 9,800 operations, 81 percent of the total sample. The data collected were received by electronic data reporting (EDR), mail, telephone, and face-to-face personal interviews. Regardless of when operations responded, they were asked to report inventories as of December 1.

Estimation Procedures: These hogs and pigs estimates were prepared by the Agricultural Statistics Board after reviewing recommendations and analysis submitted by each field office. National and State survey data were reviewed for reasonableness with each other and with estimates from past years using a balance sheet. The balance sheet begins with the previous inventory estimate, adds the estimates of births and imports, and subtracts the estimates of slaughter, exports, and deaths. This indicated ending inventory level is compared to the Agricultural Statistics Board estimate for reasonableness.

Revision Policy: Revisions to previous estimates are made to improve quarter to quarter relationships. Estimates for the previous four quarters are subject to revision when current estimates are made. In December, estimates for all quarters of the current and previous year are reviewed. The reviews are primarily based on hog check-off receipts and slaughter. Estimates will also be reviewed after data from the Department of Agriculture five-year census of agriculture are available. No revisions will be made after that date.

Reliability: Since all operations raising hogs are not included in the sample, survey estimates are subject to sampling variability. Survey results are also subject to non-sampling errors such as omissions, duplication, and mistakes in reporting, recording, and processing the data. The affects of these errors cannot be measured directly. They are minimized through rigid quality controls in the data collection process and through a careful review of all reported data for consistency and reasonableness.

To assist users in evaluating the reliability of the estimates in this report, the "**Root Mean Square Error**" is shown for selected items in the following table. The "Root Mean Square Error" is a statistical measure based on past performance and is computed using the difference between first and final estimates. The "Root Mean Square Error" for hog inventory estimates over the past 20 quarters is 0.9 percent. This means that chances are 2 out of 3 that the final estimate will not be above or below the current estimate of 62.1 million head by more than 0.9 percent. Chances are 9 out of 10 that the difference will not exceed 1.6 percent.

Reliability of December 1 Hog Estimates ¹

Item	Root Mean Square Error	90% Confidence Level		Difference Between First and Latest Estimates			Quarters	
				Average	Smallest	Largest	First Above Latest	First Below Latest
				<i>1,000 Head</i>	<i>1,000 Head</i>	<i>1,000 Head</i>	<i>Number</i>	<i>Number</i>
All Hogs & Pigs	<i>Percent</i> 0.9	<i>Percent</i> 1.6	<i>1,000 Head</i> 994	<i>1,000 Head</i> 458	<i>1,000 Head</i> 72	<i>1,000 Head</i> 1,386	<i>Number</i> 2	<i>Number</i> 18
Pig Crop	1.3	2.2	584	240	5	824	1	19
Expected Farrowings								
Next Quarter	1.2	2.1	61	29	2	91	5	15
Following Quarter	1.7	2.9	85	38	1	126	7	13

¹ Based on quarterly records for the past 20 quarters.

Information Contacts

Listed below are the commodity specialists in the Livestock Branch of the National Agricultural Statistics Service to contact for additional information.

Dan Kerestes, Chief, Livestock Branch (202) 720-3570

Livestock Section

William Weaver, Head, Livestock Section (202) 720-3570
 Bruce Boess - Hogs and Pigs (202) 720-3106
 Shawn Clark - Dairy Products (202) 690-3236
 Jason Hardegree - Milk Production and Milk Cows (202) 720-3278
 Scott Hollis - Sheep & Lambs, Goats (202) 720-4751
 Mike Miller - Cattle, Cattle on Feed (202) 720-3040
 Katy Paulsen - Livestock Slaughter (515) 284-4340
 Charmaine Wilson - Dairy Products Prices (202) 690-2168

ACCESS TO REPORTS!!

For your convenience, there are several ways to obtain NASS reports, data products, and services:

INTERNET ACCESS

All NASS reports are available free of charge on the worldwide Internet. For access, connect to the Internet and go to the NASS Home Page at: www.nass.usda.gov.

E-MAIL SUBSCRIPTION

All NASS reports are available by subscription free of charge direct to your e-mail address. Starting with the NASS Home Page at www.nass.usda.gov, under the right navigation, *Receive reports by Email*, click on **National** or **State**. Follow the instructions on the screen.

PRINTED REPORTS OR DATA PRODUCTS

CALL OUR TOLL-FREE ORDER DESK: 800-999-6779 (U.S. and Canada)
Other areas, please call 703-605-6220 FAX: 703-605-6900
(Visa, MasterCard, check, or money order acceptable for payment.)

ASSISTANCE

For **assistance** with general agricultural statistics or further information about NASS or its products or services, contact the **Agricultural Statistics Hotline** at **800-727-9540**, 7:30 a.m. to 4:00 p.m. ET, or e-mail: nass@nass.usda.gov.

The U.S. Department of Agriculture (USDA) prohibits discrimination in all its programs and activities on the basis of race, color, national origin, age, disability, and where applicable, sex, marital status, familial status, parental status, religion, sexual orientation, genetic information, political beliefs, reprisal, or because all or a part of an individual's income is derived from any public assistance program. (Not all prohibited bases apply to all programs.) Persons with disabilities who require alternative means for communication of program information (Braille, large print, audiotape, etc.) should contact USDA's TARGET Center at (202) 720-2600 (voice and TDD).

To file a complaint of discrimination, write to USDA, Director, Office of Civil Rights, 1400 Independence Avenue, S.W., Washington, D.C. 20250-9410, or call (800) 795-3272 (voice) or (202) 720-6382 (TDD). USDA is an equal opportunity provider and employer.