

# Quarterly Hogs and Pigs

Released September 26, 2008, by the National Agricultural Statistics Service (NASS), Agricultural Statistics Board, U.S. Department of Agriculture. For information on *Quarterly Hogs and Pigs* call Nick Streff at 202-720-3106, office hours 7:30 a.m. to 4:00 p.m. ET.

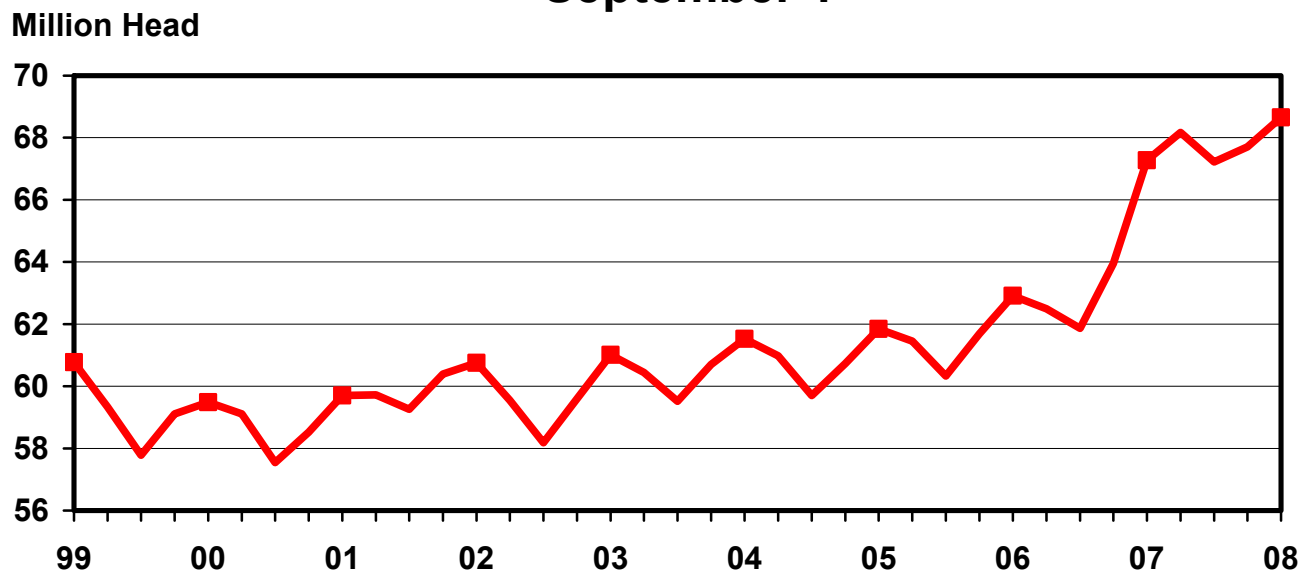
## U.S. Hog Inventory up 2 Percent

**U.S. inventory** of all hogs and pigs on September 1, 2008 was 68.7 million head. This was up 2 percent from September 1, 2007 and up 1 percent from June 1, 2008.

**Breeding inventory**, at 6.05 million head, was down 3 percent from last year and down 1 percent from the previous quarter. **Market hog inventory**, at 62.6 million head, was up 3 percent from last year and up 2 percent from last quarter.

**The June-August 2008 pig crop**, at 29.3 million head, was up 1 percent from 2007 and up 10 percent from 2006. Sows farrowing during this period totaled 3.08 million head, down 2 percent from 2007 but up 6 percent from 2006. The sows farrowed during this quarter represented 51 percent of the breeding herd. The average pigs saved per litter was 9.51 for the June-August 2008 period, compared to 9.29 last year. Pigs saved per litter by size of operation ranged from 7.80 for operations with 1-99 hogs and pigs to 9.60 for operations with more than 5,000 hogs and pigs.

## U.S. Quarterly Hogs and Pigs Inventory September 1



**U.S. hog producers** intend to have 3.01 million sows farrow during the September-November 2008 quarter, down 5 percent from the actual farrowings during the same period in 2007, but up 2 percent from 2006. Intended farrowings for December 2008-February 2009, at 2.98 million sows, are down 3 percent from 2008 but up 3 percent from 2007.

The total number of hogs under contract owned by operations with over 5,000 head, but raised by contractees, accounted for 43 percent of the total U.S. hog inventory, up from 40 percent last year.

### Revisions


All inventory and pig crop estimates for September 2007 through June 2008 were reviewed using final pig crop, official slaughter, death loss, and updated import and export data. Based on the findings of this review, adjustments of less than one half of one percent were made to the June 2008, March 2008, December 2007 and September 2007 total inventory and December 2007-February 2008 pig crop.

---

This report was approved on September 26, 2008.



Acting Secretary of  
Agriculture  
Bruce Knight



Agricultural Statistics Board  
Chairperson  
Carol C. House

## Contents

	Page
Quarterly U.S. Inventory by Class and Weight Group, 2006-2008 .....	1
Quarterly U.S. Sows Farrowed, Pig Crop, and Pigs per Litter, 2006-2009 .....	2
Hogs and Pigs: Inventory by State and U.S., 2006-2008	
March 1 .....	5
June 1 .....	7
September 1 .....	9
December 1 .....	11
Farrowings: Number of Sows, Pigs per Litter, Pig Crop by State and U.S., 2006-2009	
December-February .....	13
March-May .....	14
June-August .....	15
September-November .....	16
Monthly U.S. Farrowings, December-November 2007-2008 .....	17
Reliability Statement .....	18
Information Contacts .....	19

**Hogs and Pigs: Inventory Number by Class, Weight Group,  
and Quarter, United States, 2006-2008<sup>1</sup>**

Item	2006	2007	2008	2008 as % of	
				2006	2007
	<i>1,000 Head</i>	<i>1,000 Head</i>	<i>1,000 Head</i>	<i>Percent</i>	<i>Percent</i>
March 1 Inventory					
All Hogs and Pigs	60,326	61,860	67,219	111	109
Kept for Breeding	6,025	6,110	6,188	103	101
Market	54,301	55,749	61,030	112	109
Market Hogs and Pigs by Weight Groups					
Under 60 Pounds	19,988	20,381	22,147	111	109
60-119 Pounds	13,006	13,356	14,491	111	108
120-179 Pounds	11,434	11,679	13,193	115	113
180 Pounds and Over	9,874	10,334	11,200	113	108
June 1 Inventory					
All Hogs and Pigs	61,687	63,951	67,711	110	106
Kept for Breeding	6,060	6,120	6,119	101	100
Market	55,627	57,830	61,591	111	107
Market Hogs and Pigs by Weight Groups					
Under 60 Pounds	20,808	21,782	22,587	109	104
60-119 Pounds	13,692	14,339	15,242	111	106
120-179 Pounds	11,485	11,790	12,902	112	109
180 Pounds and Over	9,643	9,920	10,861	113	109
September 1 Inventory					
All Hogs and Pigs	62,914	67,279	68,657	109	102
Kept for Breeding	6,079	6,209	6,049	100	97
Market	56,835	61,069	62,607	110	103
Market Hogs and Pigs by Weight Groups					
Under 60 Pounds	20,708	22,650	22,573	109	100
60-119 Pounds	14,231	15,262	15,428	108	101
120-179 Pounds	11,685	12,531	13,295	114	106
180 Pounds and Over	10,212	10,627	11,312	111	106
December 1 Inventory					
All Hogs and Pigs	62,490	68,173			
Kept for Breeding	6,087	6,221			
Market	56,402	61,951			
Market Hogs and Pigs by Weight Groups					
Under 60 Pounds	20,462	22,552			
60-119 Pounds	13,928	15,174			
120-179 Pounds	11,275	12,657			
180 Pounds and Over	10,738	11,569			

<sup>1</sup> May not add due to rounding.

**Farrowings: Number of Sows, Pig Crop, and Pigs per Litter,  
United States, 2006-2009<sup>1</sup>**

Item	2006	2007	2008	2009	2008 as % of		2009 as % of 2008
					2006	2007	
	<i>1,000 Head</i>	<i>1,000 Head</i>	<i>1,000 Head</i>	<i>1,000 Head</i>	<i>Percent</i>	<i>Percent</i>	<i>Percent</i>
Sows Farrowing							
Dec-Feb <sup>2 3</sup>	2,841	2,905	3,071	2,983	108	106	97
Mar-May	2,927	3,033	3,092		106	102	
Dec-May <sup>2</sup>	5,768	5,938	6,163		107	104	
Jun-Aug	2,912	3,132	3,076		106	98	
Sep-Nov <sup>4</sup>	2,949	3,180	3,006		102	95	
Jun-Nov <sup>5</sup>	5,862	6,312	6,082		104	96	
Pig Crop							
Dec-Feb <sup>2</sup>	25,662	26,396	28,388		111	108	
Mar-May	26,580	27,896	29,000		109	104	
Dec-May <sup>2</sup>	52,242	54,293	57,388		110	106	
Jun-Aug	26,519	29,094	29,251		110	101	
Sep-Nov	26,857	29,511					
Jun-Nov	53,376	58,606					
	<i>Number</i>	<i>Number</i>	<i>Number</i>	<i>Number</i>	<i>Percent</i>	<i>Percent</i>	<i>Percent</i>
Pigs per Litter							
Dec-Feb <sup>2</sup>	9.03	9.09	9.24		102	102	
Mar-May	9.08	9.20	9.38		103	102	
Dec-May <sup>2</sup>	9.06	9.14	9.31		103	102	
Jun-Aug	9.11	9.29	9.51		104	102	
Sep-Nov	9.11	9.28					
Jun-Nov	9.11	9.28					

<sup>1</sup> May not add due to rounding.

<sup>2</sup> December preceding year.

<sup>3</sup> Intentions for 2009.

<sup>4</sup> Intentions for 2008.

<sup>5</sup> Actual farrowings for June-August plus intentions for September-November.

**Pigs per Litter: By Size of Operation, United States, 2007-2008<sup>1</sup>**

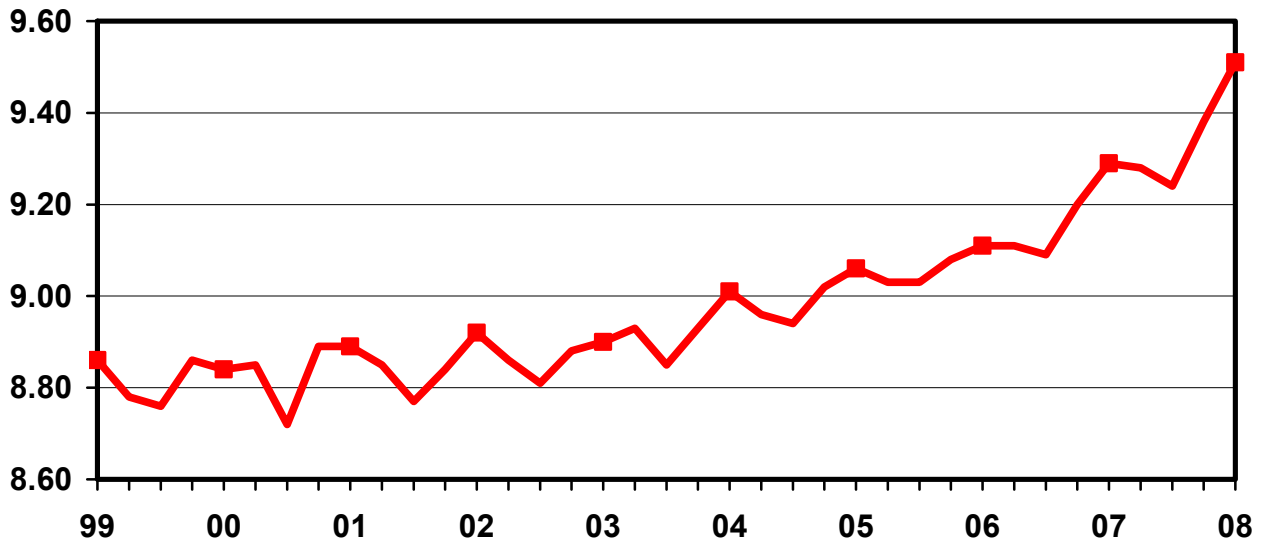
Pig Crop	Pigs per Litter on Operations Having					
	1-99 Head	100-499 Head	500-999 Head	1,000-1,999 Head	2,000-4,999 Head	5,000+ Head
	<i>Number</i>	<i>Number</i>	<i>Number</i>	<i>Number</i>	<i>Number</i>	<i>Number</i>
2007						
Dec-Feb <sup>2</sup>	7.60	8.00	8.40	8.80	9.00	9.20
Mar-May	7.60	8.00	8.40	8.90	9.10	9.30
Jun-Aug	7.60	8.20	8.60	9.00	9.20	9.40
Sep-Nov	7.50	8.20	8.60	9.00	9.30	9.40
2008						
Dec-Feb <sup>2</sup>	7.50	8.20	8.40	8.80	9.20	9.30
Mar-May	7.70	8.20	8.40	9.00	9.40	9.40
Jun-Aug	7.80	8.30	8.40	9.00	9.50	9.60
Sep-Nov						

<sup>1</sup> Pigs per litter rounded to the nearest tenth.

<sup>2</sup> December preceding year.

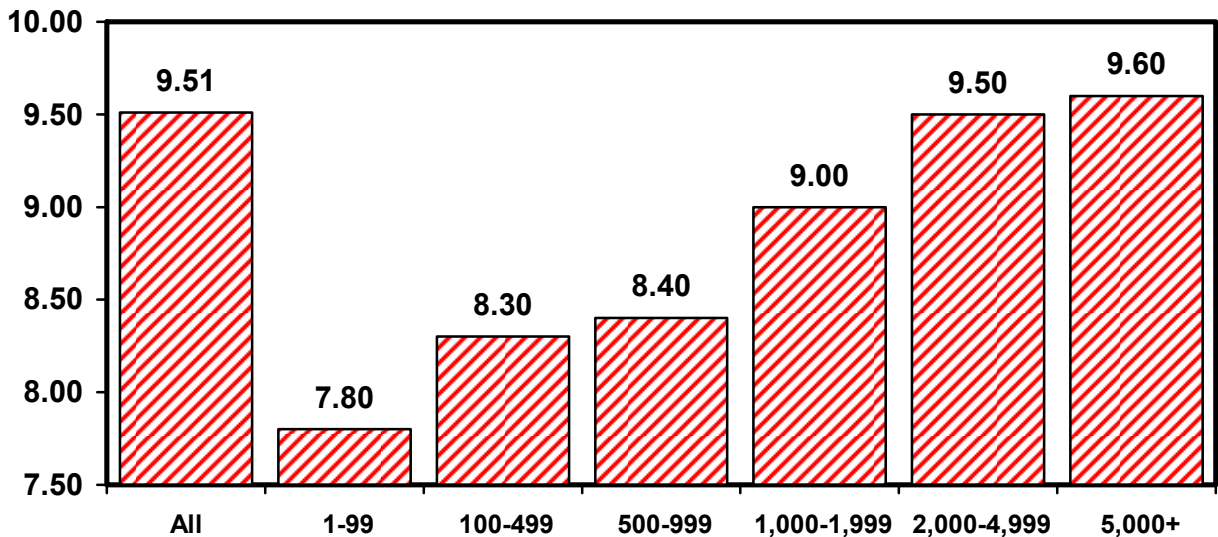
## U.S. Quarterly Litter Rate June-August

Number Head



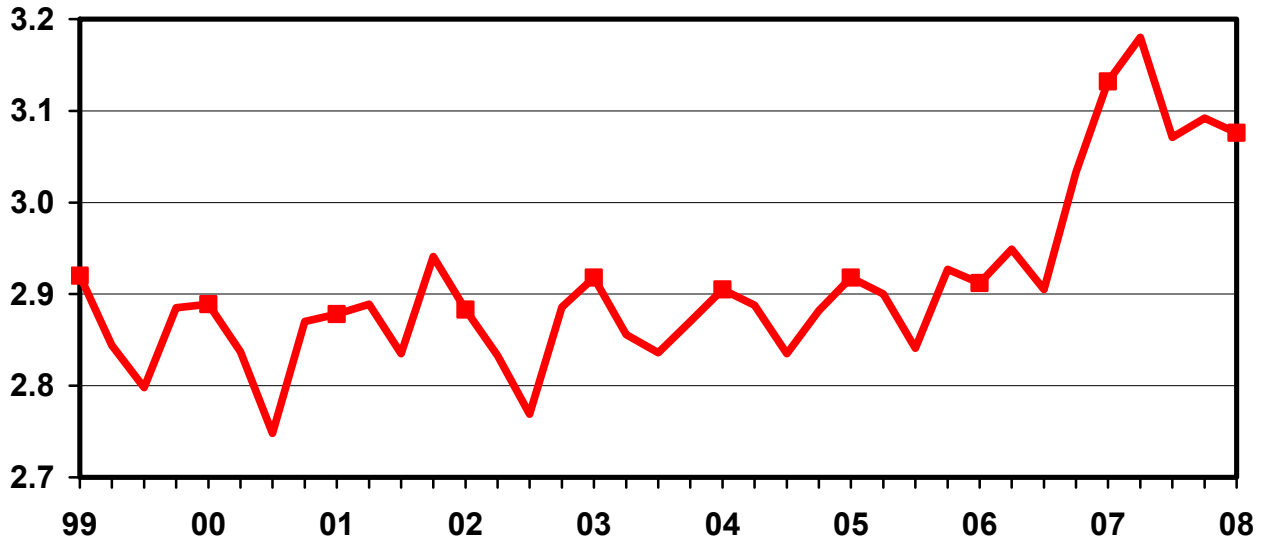
## U.S. Pigs per Litter By Size of Operation, June-August 2008

Number Head



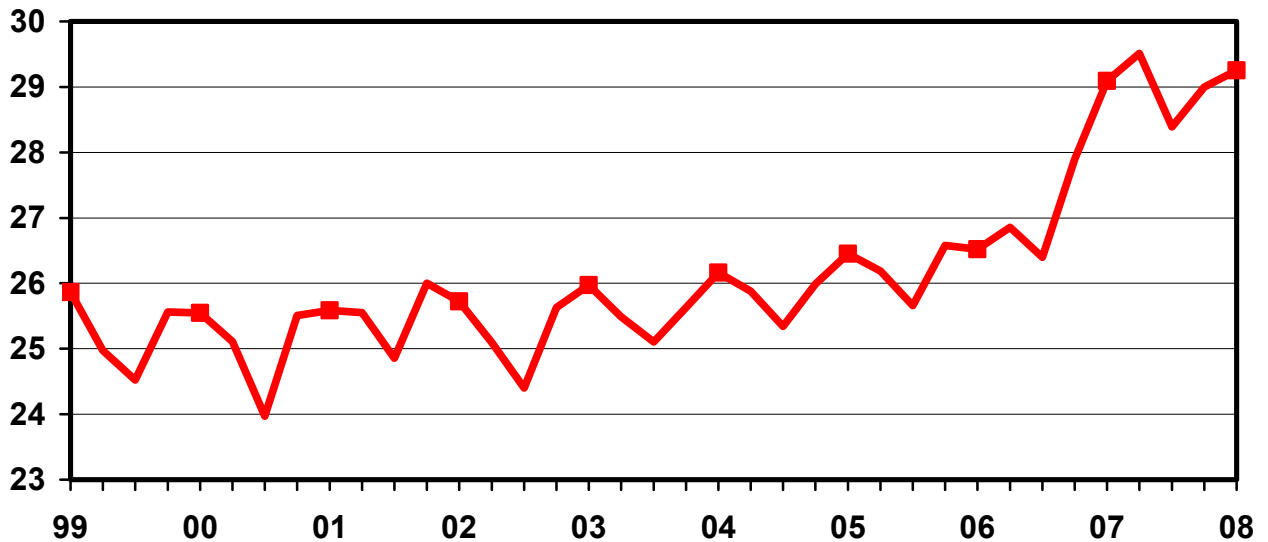
## U.S. Quarterly Sows Farrowed June-August

Million Head



## U.S. Quarterly Pig Crop June-August

Million Head



**Hogs and Pigs: Breeding, Market, and Total Inventory  
by State and United States, March 1, 2007-2008<sup>1</sup>**

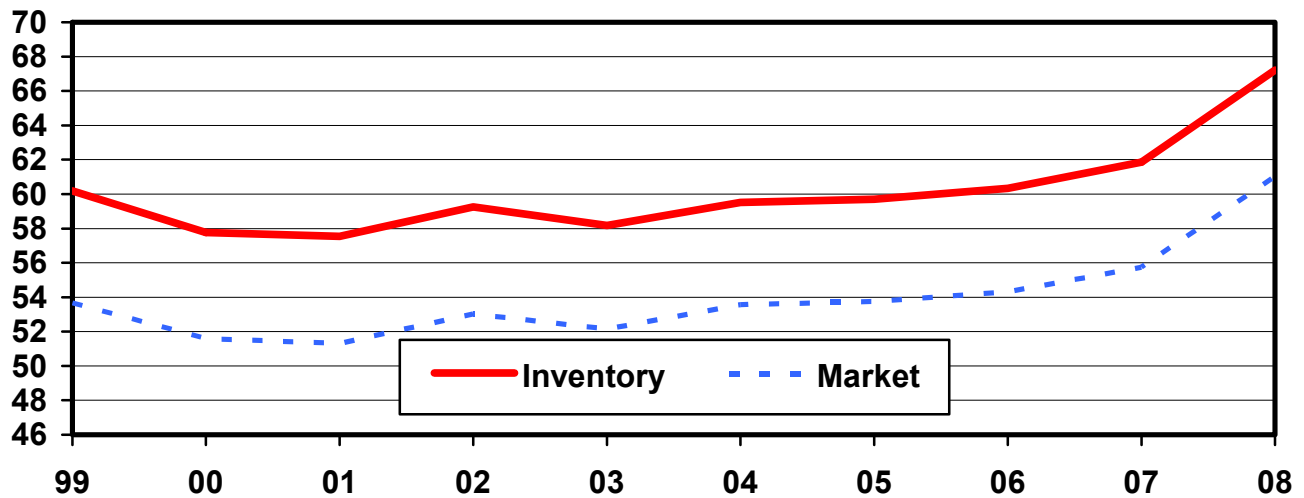
State	Breeding			Market			Total		
	2007	2008		2007	2008		2007	2008	
		Number	as % of 2007		Number	as % of 2007		Number	as % of 2007
	<i>1,000 Head</i>	<i>1,000 Head</i>	<i>Percent</i>	<i>1,000 Head</i>	<i>1,000 Head</i>	<i>Percent</i>	<i>1,000 Head</i>	<i>1,000 Head</i>	<i>Percent</i>
AR	85	90	106	190	210	111	275	300	109
CO	150	155	103	670	625	93	820	780	95
IL	440	450	102	3,660	4,000	109	4,100	4,450	109
IN	320	320	100	2,930	3,330	114	3,250	3,650	112
IA	1,090	1,090	100	15,810	18,010	114	16,900	19,100	113
KS	165	170	103	1,685	1,710	101	1,850	1,880	102
MI	110	100	91	880	890	101	990	990	100
MN	600	590	98	6,300	6,910	110	6,900	7,500	109
MO	365	380	104	2,485	2,720	109	2,850	3,100	109
NE	360	360	100	2,740	2,940	107	3,100	3,300	106
NC	1,030	1,020	99	8,370	9,080	108	9,400	10,100	107
OH	165	170	103	1,545	1,690	109	1,710	1,860	109
OK	360	400	111	1,990	1,950	98	2,350	2,350	100
PA	100	100	100	1,010	1,050	104	1,110	1,150	104
SD	140	160	114	1,140	1,310	115	1,280	1,470	115
TX	100	115	115	870	975	112	970	1,090	112
WI	55	45	82	385	365	95	440	410	93
Oth Sts <sup>2</sup>	475	473	100	3,089	3,265	106	3,565	3,739	105
US	6,110	6,188	101	55,749	61,030	109	61,860	67,219	109

<sup>1</sup> May not add due to rounding.

<sup>2</sup> Individual State estimates not available for the 33 Other States.

## U.S. Hog Inventory & Market Hogs March 1

Million Head





**Market Hogs and Pigs: Inventory Number by Weight Group,  
State, and United States, March 1, 2007-2008 <sup>1</sup>**

State	Under 60 Lbs.		60-119 Lbs.		120-179 Lbs.		180 Lbs. and Over	
	2007	2008	2007	2008	2007	2008	2007	2008
	<i>1,000 Head</i>	<i>1,000 Head</i>	<i>1,000 Head</i>	<i>1,000 Head</i>	<i>1,000 Head</i>	<i>1,000 Head</i>	<i>1,000 Head</i>	<i>1,000 Head</i>
AR	140	160	20	15	15	10	15	25
CO	375	320	100	85	75	80	120	140
IL	1,310	1,440	890	940	790	900	670	720
IN	1,070	1,200	730	830	580	680	550	620
IA	4,650	5,450	4,210	4,680	3,780	4,430	3,170	3,450
KS	575	575	310	370	335	295	465	470
MI	305	320	210	220	180	175	185	175
MN	2,400	2,690	1,540	1,650	1,330	1,460	1,030	1,110
MO	1,160	1,255	485	510	500	530	340	425
NE	1,050	1,080	730	760	530	670	430	430
NC	3,430	3,580	1,850	2,090	1,670	1,890	1,420	1,520
OH	605	635	380	415	320	390	240	250
OK	940	960	310	300	220	220	520	470
PA	300	320	295	300	225	230	190	200
SD	415	480	260	285	240	280	225	265
TX	315	330	205	190	185	210	165	245
WI	155	150	90	85	70	60	70	70
Oth Sts <sup>2</sup>	1,186	1,202	741	766	634	683	529	615
US	20,381	22,147	13,356	14,491	11,679	13,193	10,334	11,200

<sup>1</sup> Weight groups may not add to Market Hogs and Pigs due to rounding.

<sup>2</sup> Individual State estimates not available for the 33 Other States.

**Hogs and Pigs: Breeding, Market, and Total Inventory  
by State and United States, June 1, 2007-2008<sup>1</sup>**

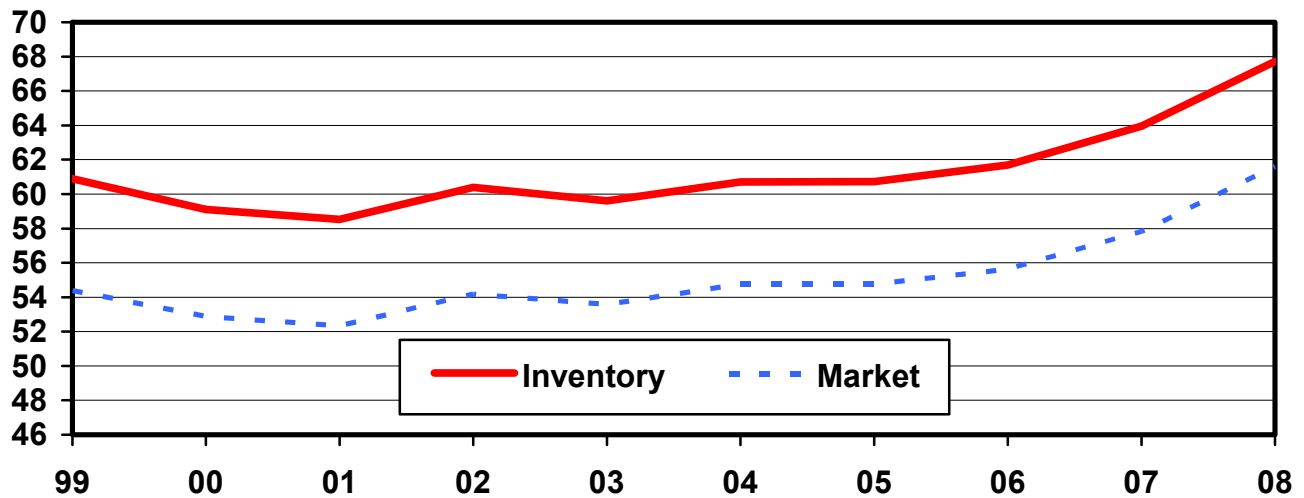
State	Breeding			Market			Total		
	2007	2008		2007	2008		2007	2008	
		Number	as % of 2007		Number	as % of 2007		Number	as % of 2007
	<i>1,000 Head</i>	<i>1,000 Head</i>	<i>Percent</i>	<i>1,000 Head</i>	<i>1,000 Head</i>	<i>Percent</i>	<i>1,000 Head</i>	<i>1,000 Head</i>	<i>Percent</i>
AR	85	95	112	205	215	105	290	310	107
CO	150	150	100	690	620	90	840	770	92
IL	440	440	100	3,560	3,910	110	4,000	4,350	109
IN	310	300	97	3,040	3,400	112	3,350	3,700	110
IA	1,080	1,090	101	17,120	18,310	107	18,200	19,400	107
KS	165	170	103	1,735	1,630	94	1,900	1,800	95
MI	110	100	91	920	940	102	1,030	1,040	101
MN	610	580	95	6,390	7,020	110	7,000	7,600	109
MO	375	375	100	2,675	2,775	104	3,050	3,150	103
NE	360	360	100	2,790	3,040	109	3,150	3,400	108
NC	1,020	1,020	100	8,680	9,080	105	9,700	10,100	104
OH	165	165	100	1,505	1,745	116	1,670	1,910	114
OK	360	400	111	1,960	1,960	100	2,320	2,360	102
PA	100	95	95	1,020	1,095	107	1,120	1,190	106
SD	145	150	103	1,145	1,300	114	1,290	1,450	112
TX	110	110	100	890	970	109	1,000	1,080	108
WI	50	45	90	360	355	99	410	400	98
Oth Sts <sup>2</sup>	485	474	98	3,145	3,226	103	3,631	3,701	102
US	6,120	6,119	100	57,830	61,591	107	63,951	67,711	106

<sup>1</sup> May not add due to rounding.

<sup>2</sup> Individual State estimates not available for the 33 Other States.

## U.S. Hog Inventory & Market Hogs June 1

Million Head



**Market Hogs and Pigs: Inventory Number by Weight Group,  
State, and United States, June 1, 2007-2008<sup>1</sup>**

State	Under 60 Lbs.		60-119 Lbs.		120-179 Lbs.		180 Lbs. and Over	
	2007	2008	2007	2008	2007	2008	2007	2008
	<i>1,000 Head</i>	<i>1,000 Head</i>	<i>1,000 Head</i>	<i>1,000 Head</i>	<i>1,000 Head</i>	<i>1,000 Head</i>	<i>1,000 Head</i>	<i>1,000 Head</i>
AR	150	160	20	20	15	15	20	20
CO	375	320	100	115	85	70	130	115
IL	1,310	1,420	920	990	760	850	570	650
IN	1,120	1,220	780	900	590	670	550	610
IA	5,450	5,500	4,770	4,980	3,850	4,450	3,050	3,380
KS	620	550	340	330	335	270	440	480
MI	330	335	215	230	195	185	180	190
MN	2,570	2,760	1,620	1,760	1,300	1,470	900	1,030
MO	1,300	1,350	545	545	505	475	325	405
NE	1,040	1,130	730	810	580	650	440	450
NC	3,600	3,700	2,000	2,150	1,670	1,760	1,410	1,470
OH	600	650	375	435	315	400	215	260
OK	940	990	315	300	230	220	475	450
PA	300	335	305	315	225	235	190	210
SD	425	485	270	305	240	270	210	240
TX	285	325	215	225	200	200	190	220
WI	155	140	85	90	65	60	55	65
Oth Sts <sup>2</sup>	1,212	1,217	734	742	630	652	570	616
US	21,782	22,587	14,339	15,242	11,790	12,902	9,920	10,861

<sup>1</sup> Weight groups may not add to Market Hogs and Pigs due to rounding.

<sup>2</sup> Individual State estimates not available for the 33 Other States.

**Hogs and Pigs: Breeding, Market, and Total Inventory  
by State and United States, September 1, 2007-2008<sup>1</sup>**

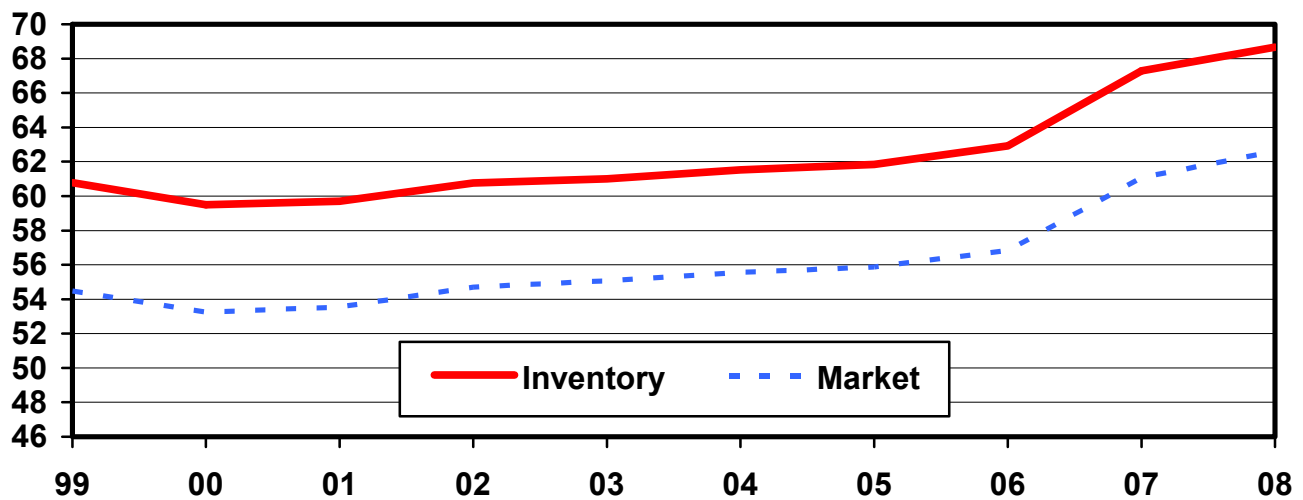
State	Breeding			Market			Total		
	2007	2008		2007	2008		2007	2008	
		Number	as % of 2007		Number	as % of 2007		Number	as % of 2007
	<i>1,000 Head</i>	<i>1,000 Head</i>	<i>Percent</i>	<i>1,000 Head</i>	<i>1,000 Head</i>	<i>Percent</i>	<i>1,000 Head</i>	<i>1,000 Head</i>	<i>Percent</i>
AR	85	95	112	205	220	107	290	315	109
CO	160	145	91	700	605	86	860	750	87
IL	450	450	100	3,750	3,950	105	4,200	4,400	105
IN	310	300	97	3,190	3,400	107	3,500	3,700	106
IA	1,070	1,070	100	17,830	18,730	105	18,900	19,800	105
KS	180	170	94	1,790	1,660	93	1,970	1,830	93
MI	100	100	100	990	960	97	1,090	1,060	97
MN	610	570	93	6,690	7,130	107	7,300	7,700	105
MO	385	365	95	2,765	2,835	103	3,150	3,200	102
NE	365	355	97	2,985	2,995	100	3,350	3,350	100
NC	1,030	1,000	97	9,370	9,300	99	10,400	10,300	99
OH	170	170	100	1,600	1,770	111	1,770	1,940	110
OK	400	400	100	2,050	2,060	100	2,450	2,460	100
PA	100	85	85	1,090	1,055	97	1,190	1,140	96
SD	155	150	97	1,225	1,290	105	1,380	1,440	104
TX	100	110	110	1,020	1,030	101	1,120	1,140	102
WI	50	45	90	370	345	93	420	390	93
Oth Sts <sup>2</sup>	489	469	96	3,449	3,272	95	3,939	3,742	95
US	6,209	6,049	97	61,069	62,607	103	67,279	68,657	102

<sup>1</sup> May not add due to rounding.

<sup>2</sup> Individual State estimates not available for the 33 Other States.

## U.S. Hog Inventory & Market Hogs September 1

Million Head



**Market Hogs and Pigs: Inventory Number by Weight Group,  
State, and United States, September 1, 2007-2008<sup>1</sup>**

State	Under 60 Lbs.		60-119 Lbs.		120-179 Lbs.		180 Lbs. and Over	
	2007	2008	2007	2008	2007	2008	2007	2008
	<i>1,000 Head</i>	<i>1,000 Head</i>	<i>1,000 Head</i>	<i>1,000 Head</i>	<i>1,000 Head</i>	<i>1,000 Head</i>	<i>1,000 Head</i>	<i>1,000 Head</i>
AR	150	170	20	20	15	15	20	15
CO	365	310	120	100	75	75	140	120
IL	1,400	1,410	930	1,020	800	860	620	660
IN	1,120	1,190	830	900	640	670	600	640
IA	5,790	5,550	4,910	5,140	4,030	4,550	3,100	3,490
KS	550	560	380	310	375	295	485	495
MI	335	360	235	235	235	190	185	175
MN	2,680	2,790	1,710	1,830	1,300	1,490	1,000	1,020
MO	1,300	1,360	545	565	530	535	390	375
NE	1,150	1,080	810	800	590	660	435	455
NC	3,700	3,700	2,310	2,050	1,810	1,860	1,550	1,690
OH	635	655	385	455	355	410	225	250
OK	950	980	340	320	250	240	510	520
PA	350	320	310	305	240	230	190	200
SD	425	470	290	300	270	275	240	245
TX	355	330	215	250	220	215	230	235
WI	150	135	105	90	60	55	55	65
Oth Sts <sup>2</sup>	1,245	1,203	817	738	736	670	652	662
US	22,650	22,573	15,262	15,428	12,531	13,295	10,627	11,312

<sup>1</sup> Weight groups may not add to Market Hogs and Pigs due to rounding.

<sup>2</sup> Individual State estimates not available for the 33 Other States.

**Hogs and Pigs: Breeding, Market, and Total Inventory  
by State and United States, December 1, 2006-2007<sup>1</sup>**

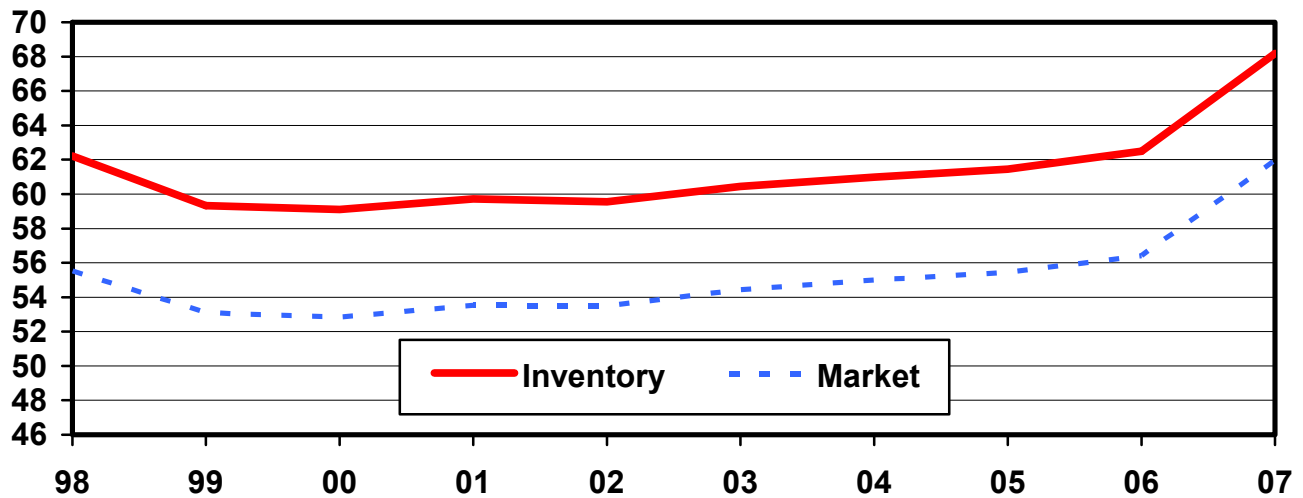
State	Breeding			Market			Total		
	2006	2007		2006	2007		2006	2007	
		Number	as % of 2006		Number	as % of 2006		Number	as % of 2006
	<i>1,000 Head</i>	<i>1,000 Head</i>	<i>Percent</i>	<i>1,000 Head</i>	<i>1,000 Head</i>	<i>Percent</i>	<i>1,000 Head</i>	<i>1,000 Head</i>	<i>Percent</i>
AR	85	85	100	175	205	117	260	290	112
CO	155	160	103	685	700	102	840	860	102
IL	440	440	100	3,760	3,910	104	4,200	4,350	104
IN	330	330	100	3,020	3,370	112	3,350	3,700	110
IA	1,080	1,100	102	16,220	18,300	113	17,300	19,400	112
KS	170	180	106	1,670	1,700	102	1,840	1,880	102
MI	110	100	91	890	940	106	1,000	1,040	104
MN	590	600	102	6,310	7,100	113	6,900	7,700	112
MO	360	375	104	2,440	2,775	114	2,800	3,150	113
NE	365	355	97	2,685	2,995	112	3,050	3,350	110
NC	1,010	1,030	102	8,490	9,170	108	9,500	10,200	107
OH	170	165	97	1,520	1,675	110	1,690	1,840	109
OK	350	400	114	1,980	1,950	98	2,330	2,350	101
PA	105	100	95	975	1,070	110	1,080	1,170	108
SD	140	165	118	1,130	1,295	115	1,270	1,460	115
TX	95	110	116	845	1,050	124	940	1,160	123
WI	55	50	91	395	390	99	450	440	98
Oth Sts <sup>2</sup>	477	476	100	3,212	3,356	104	3,690	3,833	104
US	6,087	6,221	102	56,402	61,951	110	62,490	68,173	109

<sup>1</sup> May not add due to rounding.

<sup>2</sup> Individual State estimates not available for the 33 Other States.

## U.S. Hog Inventory & Market Hogs December 1

Million Head



**Market Hogs and Pigs: Inventory Number by Weight Group,  
State, and United States, December 1, 2006-2007 <sup>1</sup>**

State	Under 60 Lbs.		60-119 Lbs.		120-179 Lbs.		180 Lbs. and Over	
	2006	2007	2006	2007	2006	2007	2006	2007
	<i>1,000 Head</i>	<i>1,000 Head</i>	<i>1,000 Head</i>	<i>1,000 Head</i>	<i>1,000 Head</i>	<i>1,000 Head</i>	<i>1,000 Head</i>	<i>1,000 Head</i>
AR	125	150	15	20	15	15	20	20
CO	380	360	80	90	85	90	140	160
IL	1,270	1,420	970	980	800	820	720	690
IN	1,120	1,260	760	850	580	670	560	590
IA	4,910	5,810	4,470	4,880	3,540	4,060	3,300	3,550
KS	560	580	320	365	310	295	480	460
MI	300	320	230	240	170	200	190	180
MN	2,420	2,750	1,540	1,730	1,250	1,450	1,100	1,170
MO	1,130	1,310	490	570	475	475	345	420
NE	1,010	1,150	720	805	530	590	425	450
NC	3,390	3,420	1,970	2,220	1,680	1,890	1,450	1,640
OH	590	650	370	405	305	365	255	255
OK	900	910	340	300	240	220	500	520
PA	300	350	300	300	185	220	190	200
SD	415	465	260	285	220	295	235	250
TX	280	310	200	230	185	230	180	280
WI	155	150	100	100	70	70	70	70
Oth Sts <sup>2</sup>	1,207	1,187	793	804	635	702	578	664
US	20,462	22,552	13,928	15,174	11,275	12,657	10,738	11,569

<sup>1</sup> Weight groups may not add to Market Hogs and Pigs due to rounding.

<sup>2</sup> Individual State estimates not available for the 33 Other States.

**Farrowings: Number of Sows, Pigs per Litter, and Pig Crop  
by State and United States, December-February 2007-2009<sup>1,2</sup>**

State	Sows Farrowing				Pigs Per Litter		Pig Crop <sup>3</sup>		
	2007	2008	2009 <sup>4</sup>		2007	2008	2007	2008	
			Number	as % of 2008				Number	as % of 2007
	<i>1,000 Head</i>	<i>1,000 Head</i>	<i>1,000 Head</i>	<i>Percent</i>	<i>Number</i>	<i>Number</i>	<i>1,000 Head</i>	<i>1,000 Head</i>	<i>Percent</i>
AR	39	44	45	102	9.45	9.60	369	422	114
CO	83	84	80	95	8.80	9.05	730	760	104
IL	210	240	240	100	9.05	9.25	1,901	2,220	117
IN	140	150	145	97	8.80	9.00	1,232	1,350	110
IA	455	510	490	96	9.00	9.20	4,095	4,692	115
KS	88	86	87	101	8.90	9.10	783	783	100
MI	49	52	53	102	8.75	9.45	429	491	114
MN	275	285	275	96	9.25	9.25	2,544	2,636	104
MO	180	190	185	97	9.05	9.20	1,629	1,748	107
NE	180	190	180	95	9.20	9.50	1,656	1,805	109
NC	540	550	540	98	9.10	9.20	4,914	5,060	103
OH	84	89	85	96	9.15	9.15	769	814	106
OK	190	180	180	100	9.20	9.35	1,748	1,683	96
PA	44	43	37	86	9.00	9.50	396	409	103
SD	67	88	76	86	9.50	9.60	637	845	133
TX	45	53	50	94	8.90	9.00	401	477	119
WI	27	26	23	88	8.95	8.95	242	233	96
Oth Sts <sup>5</sup>	209	211	212	100	9.18	9.29	1,921	1,960	102
US	2,905	3,071	2,983	97	9.09	9.24	26,396	28,388	108

<sup>1</sup> December preceding year.

<sup>2</sup> May not add due to rounding.

<sup>3</sup> Number of pigs born December-February that were still on hand March 1, or had been sold.

<sup>4</sup> Intentions.

<sup>5</sup> Individual State estimates not available for the 33 Other States.



**Farrowings: Number of Sows, Pigs per Litter, and Pig Crop  
by State and United States, March-May 2007-2008 <sup>1</sup>**

State	Sows Farrowing			Pigs per Litter		Pig Crop <sup>2</sup>		
	2007	2008		2007	2008	2007	2008	
		Number	as % of 2007				Number	as % of 2007
	<i>1,000 Head</i>	<i>1,000 Head</i>	<i>Percent</i>	<i>Number</i>	<i>Number</i>	<i>1,000 Head</i>	<i>1,000 Head</i>	<i>Percent</i>
AR	42	45	107	9.80	9.80	412	441	107
CO	80	82	103	8.90	8.85	712	726	102
IL	230	230	100	9.05	9.35	2,082	2,151	103
IN	140	145	104	8.95	9.10	1,253	1,320	105
IA	480	530	110	9.20	9.35	4,416	4,956	112
KS	88	80	91	8.95	9.10	788	728	92
MI	53	53	100	9.00	9.70	477	514	108
MN	290	290	100	9.35	9.50	2,712	2,755	102
MO	195	195	100	9.15	9.40	1,784	1,833	103
NE	185	190	103	9.45	9.60	1,748	1,824	104
NC	560	560	100	9.05	9.35	5,068	5,236	103
OH	83	89	107	9.30	9.40	772	837	108
OK	195	185	95	9.40	9.45	1,833	1,748	95
PA	45	43	96	9.10	9.45	410	406	99
SD	73	86	118	9.55	9.70	697	834	120
TX	49	52	106	9.25	8.60	453	447	99
WI	26	26	100	8.90	9.10	231	237	103
Oth Sts <sup>3</sup>	219	211	96	9.36	9.53	2,048	2,007	98
US	3,033	3,092	102	9.20	9.38	27,896	29,000	104

<sup>1</sup> May not add due to rounding.

<sup>2</sup> Number of pigs born March-May that were still on hand June 1, or had been sold.

<sup>3</sup> Individual State estimates not available for the 33 Other States.

**Farrowings: Number of Sows, Pigs per Litter, and Pig Crop  
by State and United States, June-August 2007-2008 <sup>1</sup>**

State	Sows Farrowing			Pigs per Litter		Pig Crop <sup>2</sup>		
	2007	2008		2007	2008	2007	2008	
		Number	as % of 2007				Number	as % of 2007
	<i>1,000 Head</i>	<i>1,000 Head</i>	<i>Percent</i>	<i>Number</i>	<i>Number</i>	<i>1,000 Head</i>	<i>1,000 Head</i>	<i>Percent</i>
AR	46	50	109	9.70	9.70	446	485	109
CO	83	76	92	9.15	8.90	759	676	89
IL	245	240	98	9.15	9.45	2,242	2,268	101
IN	150	145	97	9.10	9.25	1,365	1,341	98
IA	480	510	106	9.30	9.40	4,464	4,794	107
KS	90	81	90	9.00	9.15	810	741	91
MI	55	53	96	9.20	9.25	506	490	97
MN	295	285	97	9.50	9.80	2,803	2,793	100
MO	195	195	100	9.30	9.70	1,814	1,892	104
NE	200	185	93	9.50	9.70	1,900	1,795	94
NC	580	560	97	9.10	9.65	5,278	5,404	102
OH	86	89	103	9.40	9.50	808	846	105
OK	195	195	100	9.35	9.40	1,823	1,833	101
PA	48	38	79	9.60	9.60	461	365	79
SD	83	81	98	9.60	9.80	797	794	100
TX	58	52	90	9.05	8.55	525	445	85
WI	26	24	92	8.90	9.10	231	218	94
Oth Sts <sup>3</sup>	217	217	100	9.49	9.56	2,062	2,071	100
US	3,132	3,076	98	9.29	9.51	29,094	29,251	101

<sup>1</sup> May not add due to rounding.

<sup>2</sup> Number of pigs born June-August that were still on hand September 1, or had been sold.

<sup>3</sup> Individual State estimates not available for the 33 Other States.

**Farrowings: Number of Sows, Pigs per Litter, and Pig Crop  
by State and United States, September-November 2006-2008<sup>1</sup>**

State	Sows Farrowing				Pigs Per Litter		Pig Crop <sup>2</sup>		
	2006	2007	2008 <sup>3</sup>		2006	2007	2006	2007	
			Number	as % of 2007				Number	as % of 2006
	<i>1,000 Head</i>	<i>1,000 Head</i>	<i>1,000 Head</i>	<i>Percent</i>	<i>Number</i>	<i>Number</i>	<i>1,000 Head</i>	<i>1,000 Head</i>	<i>Percent</i>
AR	38	44	46	105	9.75	9.80	371	431	116
CO	84	83	77	93	8.80	9.05	739	751	102
IL	215	245	240	98	9.10	9.25	1,957	2,266	116
IN	140	155	140	90	8.90	9.00	1,246	1,395	112
IA	480	540	510	94	9.05	9.30	4,344	5,022	116
KS	87	89	85	96	8.85	9.15	770	814	106
MI	50	53	52	98	8.95	9.45	448	501	112
MN	280	295	275	93	9.30	9.30	2,604	2,744	105
MO	175	195	185	95	9.00	9.30	1,575	1,814	115
NE	185	195	180	92	9.25	9.55	1,711	1,862	109
NC	550	570	540	95	9.15	9.20	5,033	5,244	104
OH	83	86	85	99	9.20	9.45	764	813	106
OK	185	190	190	100	9.00	9.20	1,665	1,748	105
PA	43	51	37	73	9.00	9.10	387	464	120
SD	71	90	78	87	9.45	9.55	671	860	128
TX	45	58	54	93	8.95	9.35	403	542	134
WI	29	26	23	88	8.90	8.90	258	231	90
Oth Sts <sup>4</sup>	209	215	209	97	9.12	9.36	1,911	2,009	105
US	2,949	3,180	3,006	95	9.11	9.28	26,857	29,511	110

<sup>1</sup> May not add due to rounding.

<sup>2</sup> Number of pigs born September-November that were still on hand December 1, or had been sold.

<sup>3</sup> Intentions.

<sup>4</sup> Individual State estimates not available for the 33 Other States.

**Monthly Farrowings: Number of Sows, Pigs per Litter, and Pig Crop,  
United States, December-November 2007-2008<sup>1 2</sup>**

Month	Sows Farrowing		Pigs per Litter		Pig Crop	
	2007	2008	2007	2008	2007	2008
	<i>1,000 Head</i>	<i>1,000 Head</i>	<i>Number</i>	<i>Number</i>	<i>1,000 Head</i>	<i>1,000 Head</i>
Dec <sup>1</sup>	960	1,017	9.08	9.22	8,712	9,381
Jan	972	1,028	9.10	9.24	8,841	9,502
Feb	973	1,026	9.09	9.26	8,843	9,505
Mar	1,023	1,060	9.14	9.35	9,346	9,910
Apr	1,006	1,013	9.23	9.38	9,290	9,507
May	1,004	1,019	9.22	9.40	9,260	9,583
Jun	1,046	1,046	9.30	9.48	9,727	9,916
Jul	1,040	1,021	9.31	9.52	9,680	9,721
Aug	1,046	1,009	9.26	9.53	9,687	9,614
Sep	1,078		9.27		9,993	
Oct	1,062		9.30		9,872	
Nov	1,040		9.28		9,646	
Total	12,250		9.22		112,898	

<sup>1</sup> December preceding year.

<sup>2</sup> Monthly values may not add to quarterly or annual totals due to rounding.

## Reliability of September 1 Hogs and Pigs Estimates

**Survey Procedures:** A random sample of roughly 9,200 U.S. producers was surveyed to provide data for these estimates. Survey procedures ensured that all hog and pig producers, regardless of size, had a chance to be included in the survey. Large producers were sampled more heavily than small operations. During the first half of September 2008, data were collected from about 7,600 operations, 83 percent of the total sample. The data collected were received by electronic data reporting (EDR), mail, telephone, and face-to-face personal interviews. Regardless of when operations responded, they were asked to report inventories as of September 1, 2008.

**Estimation Procedures:** Hogs and pigs estimates were prepared by the Agricultural Statistics Board after reviewing recommendations and analysis submitted by each field office. National and State survey data were reviewed for reasonableness with each other and with estimates from past years using a balance sheet. The balance sheet begins with the previous inventory estimate, adds the estimates of births and imports, and subtracts the estimates of slaughter, exports, and deaths. This indicated ending inventory level is compared to the Agricultural Statistics Board estimate for reasonableness.

**Revision Policy:** Revisions to previous estimates are made to improve quarter to quarter relationships. Estimates for the previous four quarters are subject to revision when current estimates are made. In December, estimates for all quarters of the current and previous year are reviewed. The reviews are primarily based on hog check-off receipts and slaughter. Estimates will also be reviewed after data from the Department of Agriculture five-year Census of Agriculture are available. No revisions will be made after that date.

**Reliability:** Since all hog raising operations are not included in the sample, survey estimates are subject to sampling variability. Survey results are also subject to non-sampling errors such as omissions, duplication, and mistakes in reporting, recording, and processing the data. The affects of these errors cannot be measured directly. They are minimized through rigid quality controls in the data collection process and through a careful review of all reported data for consistency and reasonableness.

To assist users in evaluating the reliability of the estimates in this report, the "**Root Mean Square Error**" is shown for selected items in the following table. The "Root Mean Square Error" is a statistical measure based on past performance and is computed using the difference between first and final estimates. The "Root Mean Square Error" for hog inventory estimates over the past 20 quarters is 1.6 percent. This means that chances are 2 out of 3 that the final estimate will not be above or below the current estimate of 68.7 million head by more than 1.6 percent. Chances are 9 out of 10 that the difference will not exceed 2.8 percent.

**Reliability of September 1 Hog Estimates <sup>1</sup>**

Item	Root Mean Square Error	90% Confidence Level		Difference Between First and Latest Estimates			Quarters	
				Average	Smallest	Largest	First Above Latest	First Below Latest
				<i>1,000 Head</i>	<i>1,000 Head</i>	<i>1,000 Head</i>		
	<i>Percent</i>	<i>Percent</i>	<i>1,000 Head</i>	<i>1,000 Head</i>	<i>1,000 Head</i>	<i>1,000 Head</i>	<i>Number</i>	<i>Number</i>
All Hogs & Pigs	1.6	2.8	1,911	731	50	3,063	2	18
Pig Crop	2.1	3.6	1,039	382	0	1,643	2	17
Expected Farrowings								
Next Quarter	2.5	4.3	131	53	3	216	3	17
Following Quarter	2.9	5.0	152	65	3	220	3	17

<sup>1</sup> Based on quarterly records for the past 20 quarters.

**Information Contacts**

Listed below are the commodity specialists in the Livestock Branch of the National Agricultural Statistics Service to contact for additional information.

Dan Kerestes, Chief, Livestock Branch ..... (202) 720-3570

**Livestock Section**

Scott Hollis, Head, Livestock Section ..... (202) 690-2424  
 Jim Collom - Dairy Products ..... (202) 690-3236  
 Joe Gaynor - Dairy Products Prices ..... (202) 690-2168  
 Jason Hardegree - Cattle, Cattle on Feed ..... (202) 720-3040  
 Benita Hodge - Livestock Slaughter ..... (515) 284-4340  
 Everett Olbert - Sheep and Goats ..... (202) 720-4751  
 Mike Miller - Milk Production and Milk Cows ..... (202) 720-3278  
 Nick Streff - Hogs and Pigs ..... (202) 720-3106

## ACCESS TO REPORTS!!

---

For your convenience, there are several ways to obtain NASS reports, data products, and services:

### INTERNET ACCESS

All NASS reports are available free of charge on the worldwide Internet. For access, connect to the Internet and go to the NASS Home Page at: [www.nass.usda.gov](http://www.nass.usda.gov).

### E-MAIL SUBSCRIPTION

All NASS reports are available by subscription free of charge direct to your e-mail address. Starting with the NASS Home Page at [www.nass.usda.gov](http://www.nass.usda.gov), under the right navigation, *Receive reports by Email*, click on **National** or **State**. Follow the instructions on the screen.

-----

### PRINTED REPORTS OR DATA PRODUCTS

**CALL OUR TOLL-FREE ORDER DESK: 800-999-6779 (U.S. and Canada)**  
**Other areas, please call 703-605-6220      FAX: 703-605-6900**  
**(Visa, MasterCard, check, or money order acceptable for payment.)**

-----

### ASSISTANCE

For **assistance** with general agricultural statistics or further information about NASS or its products or services, contact the **Agricultural Statistics Hotline** at **800-727-9540**, 7:30 a.m. to 4:00 p.m. ET, or e-mail: [nass@nass.usda.gov](mailto:nass@nass.usda.gov).

The U.S. Department of Agriculture (USDA) prohibits discrimination in all its programs and activities on the basis of race, color, national origin, age, disability, and where applicable, sex, marital status, familial status, parental status, religion, sexual orientation, genetic information, political beliefs, reprisal, or because all or a part of an individual's income is derived from any public assistance program. (Not all prohibited bases apply to all programs.) Persons with disabilities who require alternative means for communication of program information (Braille, large print, audiotape, etc.) should contact USDA's TARGET Center at (202) 720-2600 (voice and TDD).

To file a complaint of discrimination, write to USDA, Director, Office of Civil Rights, 1400 Independence Avenue, S.W., Washington, D.C. 20250-9410, or call (800) 795-3272 (voice) or (202) 720-6382 (TDD). USDA is an equal opportunity provider and employer.

# **USDA Data Users' Meeting**

**October 20, 2008**

**Doubletree Hotel Chicago O'Hare Airport-Rosemont**

**Rosemont, Illinois**

**(847) 292-9100**

The USDA's National Agricultural Statistics Service will be organizing an open forum for data users. The purpose will be to provide updates on pending changes in the various statistical and information programs and seek comments and input from data users. Other USDA agencies to be represented will include the Agricultural Marketing Service, the Economic Research Service, the Foreign Agricultural Service, and World Agricultural Outlook Board. The Foreign Trade Division from the Census Bureau will also be included in the meeting.

For registration details or additional information for the Data Users' Meeting, see the NASS homepage at [www.nass.usda.gov/forum/](http://www.nass.usda.gov/forum/) or contact Marjorie Taylor (NASS) at (202) 690-8141 or at [marjorie\\_taylor@nass.usda.gov](mailto:marjorie_taylor@nass.usda.gov).

This Data Users' Meeting precedes an Industry Outlook meeting that will be held at the same location on October 21, 2008. The Outlook meeting brings together analysts from various commodity sectors to discuss the outlook situation. For registration details or additional information for the Industry Outlook Meeting see the Livestock and Marketing Information Center (LMIC) homepage at [www.lmic.info](http://www.lmic.info) or contact Jim Robb at (720) 544-2941 or at [robb@lmic.info](mailto:robb@lmic.info).