

Quarterly Hogs and Pigs

Released December 30, 2008, by the National Agricultural Statistics Service (NASS), Agricultural Statistics Board, U.S. Department of Agriculture. For information on *Quarterly Hogs and Pigs* call Nick Streff at 202-720-3106, office hours 7:30 a.m. to 4:00 p.m. ET.

U.S. Hog Inventory down 2 Percent

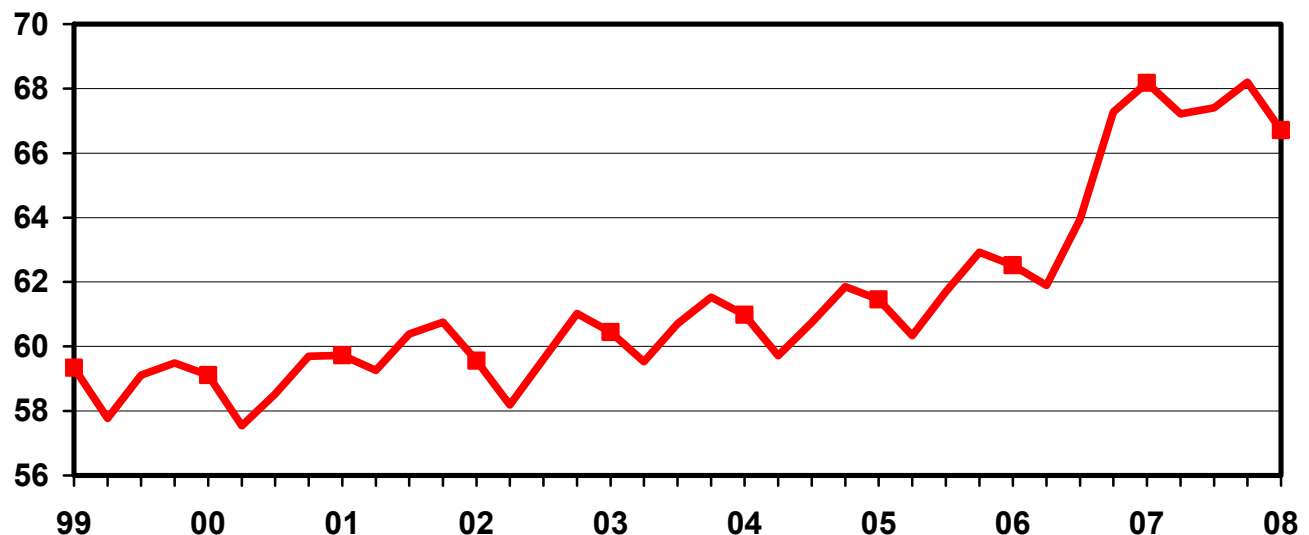
U.S. inventory of all hogs and pigs on December 1, 2008 was 66.7 million head. This was down 2 percent from both December 1, 2007 and September 1, 2008.

Breeding inventory, at 6.08 million head, was down 2 percent from last year but up slightly from the previous quarter. **Market hog inventory**, at 60.6 million head, was down 2 percent from both last year and last quarter.

The September-November 2008 pig crop, at 28.4 million head, was down 4 percent from 2007 but up 6 percent from 2006. Sows farrowing during this period totaled 2.99 million head, down 6 percent from 2007 but up 1 percent from 2006. The sows farrowed during this quarter represented 49 percent of the breeding herd. The average pigs saved per litter was 9.50 for the September-November 2008 period, compared to 9.28 last year. Pigs saved per litter by size of operation ranged from 7.50 for operations with 1-99 hogs and pigs to 9.60 for operations with more than 5,000 hogs and pigs.

U.S. Quarterly Hogs and Pigs Inventory December 1

Million Head



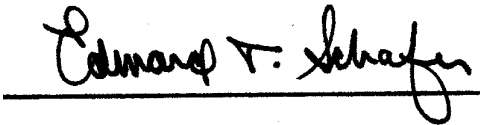
U.S. hog producers intend to have 2.97 million sows farrow during the December 2008-February 2009 quarter, down 3 percent from the actual farrowings during the same period in 2008 but up 2 percent from 2007. Intended farrowings for March-May 2009, at 3.01 million sows, are down 2 percent from 2008 and down 1 percent from 2007.

The total number of hogs under contract owned by operations with over 5,000 head, but raised by contractees, accounted for 43 percent of the total U.S. hog inventory, up from 39 percent last year.

Revisions

All inventory and pig crop estimates for March 2007 through September 2008 were reviewed using slaughter, death loss and current import and export data. Based on this review, adjustments of less than one half of one percent were made to the June 2008 total inventory and March-May 2007 pig crop. An adjustment of less than two percent was made to the March-May 2008 pig crop while an adjustment of less than one percent was made to the September 2008 total inventory.

This report was approved on December 30, 2008.



Secretary of
Agriculture
Edward T. Schafer



Agricultural Statistics Board
Chairperson
Carol C. House

Contents

Page

Quarterly U.S. Inventory by Class and Weight Group, 2007-2008	1
Quarterly U.S. Sows Farrowed, Pig Crop, and Pigs per Litter, 2007-2009	2
Hogs and Pigs: Inventory by State and U.S., 2007-2008	
December 1	5
March 1	7
June 1	9
September 1	11
Farrowings: Number of Sows, Pigs per Litter, Pig Crop by State and U.S., 2007-2009	
December-November	13
December-February	14
March-May	15
June-August	16
September-November	17
Monthly U.S. Farrowings, December-November 2007-2008	18
Reliability Statement	19
Information Contacts	20

**Hogs and Pigs: Inventory Number by Class, Weight Group,
and Quarter, United States, 2007-2008¹**

Item	2007	2008	2008 as a % 2007
	<i>1,000 Head</i>	<i>1,000 Head</i>	<i>Percent</i>
March 1 Inventory			
All Hogs and Pigs	61,896	67,218	109
Kept for Breeding	6,149	6,200	101
Market	55,746	61,018	109
Market Hogs and Pigs by Weight Groups			
Under 60 Pounds	20,379	22,137	109
60-119 Pounds	13,355	14,490	109
120-179 Pounds	11,678	13,193	113
180 Pounds and Over	10,334	11,199	108
June 1 Inventory			
All Hogs and Pigs	63,947	67,400	105
Kept for Breeding	6,169	6,131	99
Market	57,777	61,269	106
Market Hogs and Pigs by Weight Groups			
Under 60 Pounds	21,748	22,197	102
60-119 Pounds	14,320	15,321	107
120-179 Pounds	11,789	12,892	109
180 Pounds and Over	9,920	10,860	109
September 1 Inventory			
All Hogs and Pigs	67,275	68,196	101
Kept for Breeding	6,208	6,061	98
Market	61,066	62,135	102
Market Hogs and Pigs by Weight Groups			
Under 60 Pounds	22,648	22,533	99
60-119 Pounds	15,261	15,547	102
120-179 Pounds	12,530	12,855	103
180 Pounds and Over	10,627	11,201	105
December 1 Inventory			
All Hogs and Pigs	68,177	66,708	98
Kept for Breeding	6,233	6,081	98
Market	61,944	60,627	98
Market Hogs and Pigs by Weight Groups			
Under 60 Pounds	22,545	21,297	94
60-119 Pounds	15,173	15,096	99
120-179 Pounds	12,658	12,716	100
180 Pounds and Over	11,569	11,518	100

¹ May not add due to rounding.

**Farrowings: Number of Sows, Pig Crop, and Pigs per Litter,
United States, 2007-2009¹**

Item	2007	2008	2009	2008 as % of 2007	2009 as % of 2008
	<i>1,000 Head</i>	<i>1,000 Head</i>	<i>1,000 Head</i>	<i>Percent</i>	<i>Percent</i>
Sows Farrowing					
Dec-Feb ^{2 3}	2,905	3,071	2,971	106	97
Mar-May ³	3,030	3,055	3,007	101	98
Dec-May ^{2 3}	5,935	6,126	5,978	103	98
Jun-Aug	3,133	3,075		98	
Sep-Nov	3,180	2,990		94	
Jun-Nov	6,312	6,065		96	
Pig Crop					
Dec-Feb ²	26,395	28,387		108	
Mar-May	27,870	28,657		103	
Dec-May ²	54,266	57,044		105	
Jun-Aug	29,095	29,250		101	
Sep-Nov	29,513	28,410		96	
Jun-Nov	58,608	57,660		98	
	<i>Number</i>	<i>Number</i>	<i>Number</i>	<i>Percent</i>	<i>Percent</i>
Pigs per Litter					
Dec-Feb ²	9.09	9.24		102	
Mar-May	9.20	9.38		102	
Dec-May ²	9.14	9.31		102	
Jun-Aug	9.29	9.51		102	
Sep-Nov	9.28	9.50		102	
Jun-Nov	9.28	9.51		102	

¹ May not add due to rounding.

² December preceding year.

³ Intentions for 2009.

Pigs per Litter: By Size of Operation, United States, 2007-2008¹

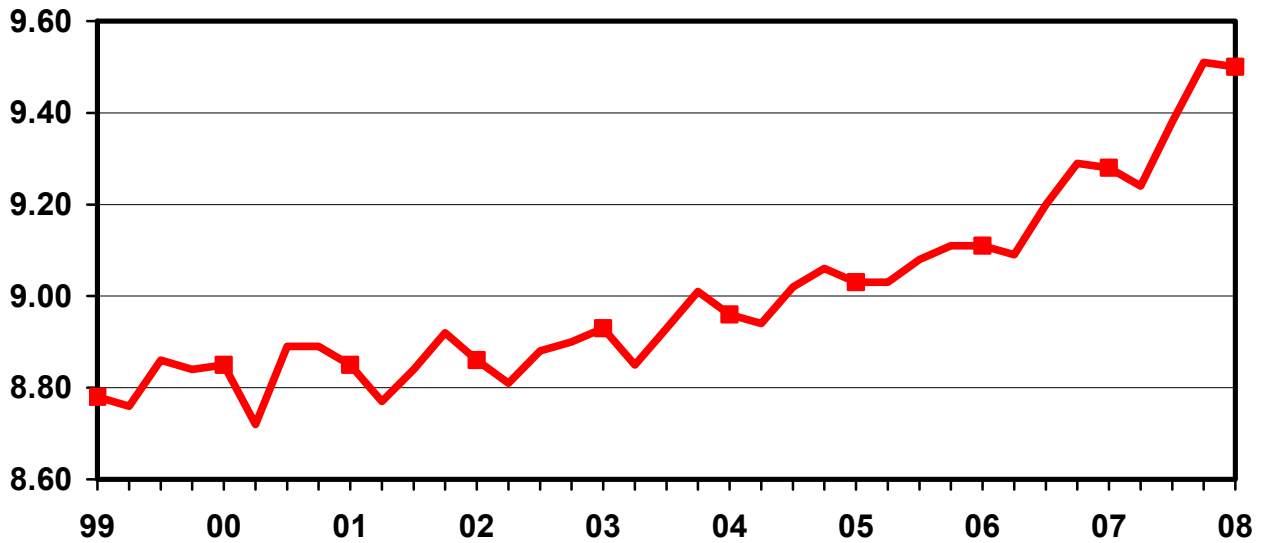
Pig Crop	Pigs per Litter on Operations Having					
	1-99 Head	100-499 Head	500-999 Head	1,000-1,999 Head	2,000-4,999 Head	5,000+ Head
	<i>Number</i>	<i>Number</i>	<i>Number</i>	<i>Number</i>	<i>Number</i>	<i>Number</i>
2007						
Dec-Feb ²	7.60	8.00	8.40	8.80	9.00	9.20
Mar-May	7.60	8.00	8.40	8.90	9.10	9.30
Jun-Aug	7.60	8.20	8.60	9.00	9.20	9.40
Sep-Nov	7.50	8.20	8.60	9.00	9.30	9.40
2008						
Dec-Feb ²	7.50	8.20	8.40	8.80	9.20	9.30
Mar-May	7.70	8.20	8.40	9.00	9.40	9.40
Jun-Aug	7.80	8.30	8.40	9.00	9.50	9.60
Sep-Nov	7.50	8.20	8.30	9.00	9.40	9.60

¹ Pigs per litter rounded to the nearest tenth.

² December preceding year.

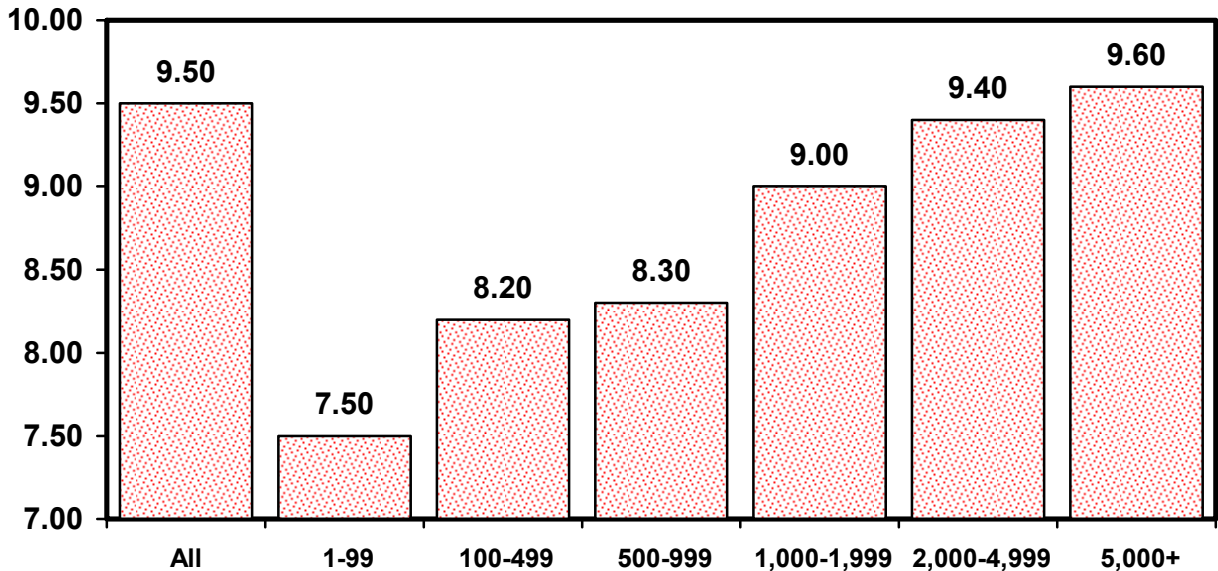
U.S. Quarterly Litter Rate September-November

Number Head



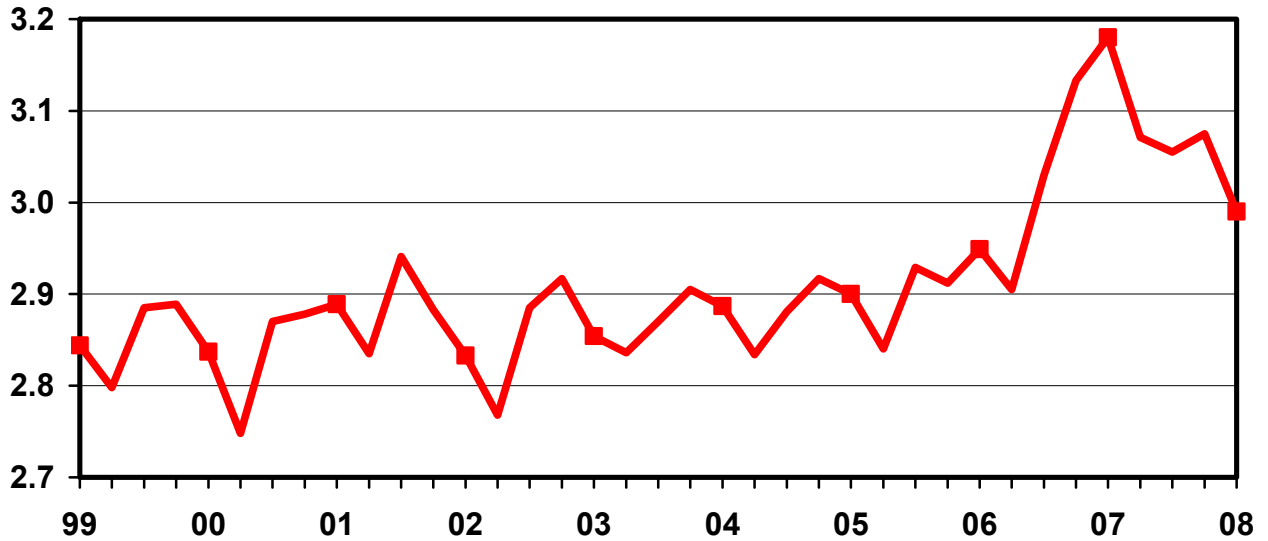
U.S. Pigs per Litter By Size of Operation, September-November 2008

Number Head



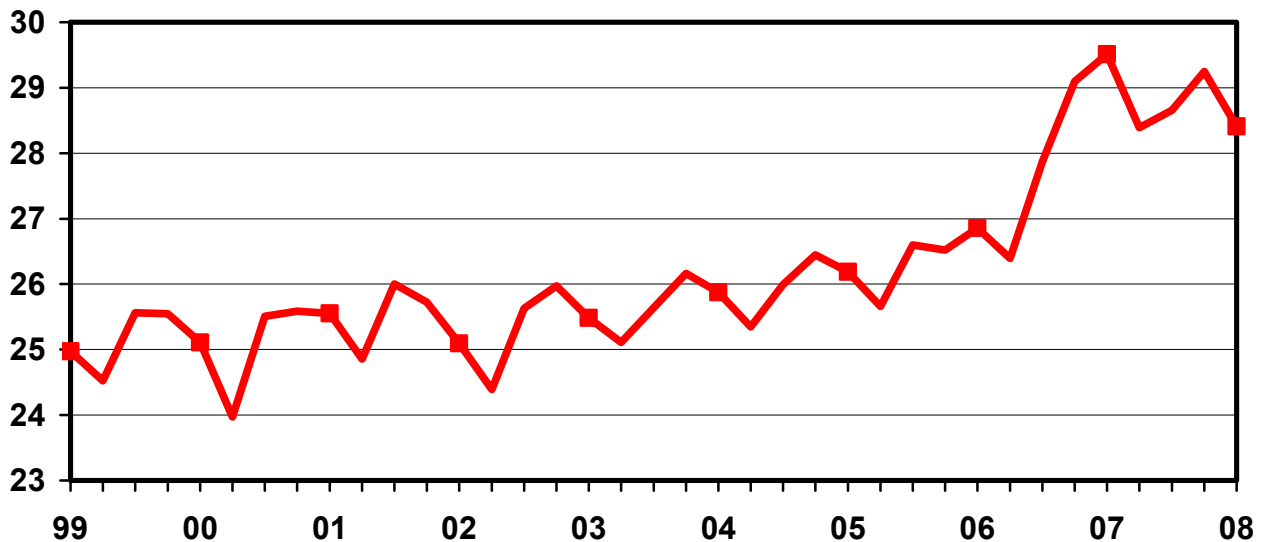
U.S. Quarterly Sows Farrowed September-November

Million Head



U.S. Quarterly Pig Crop September-November

Million Head



**Hogs and Pigs: Breeding, Market, and Total Inventory
by State and United States, December 1, 2007-2008 ¹**

State	Breeding			Market			Total		
	2007	2008		2007	2008		2007	2008	
		Number	as % of 2007		Number	as % of 2007		Number	as % of 2007
	<i>1,000 Head</i>	<i>1,000 Head</i>	<i>Percent</i>	<i>1,000 Head</i>	<i>1,000 Head</i>	<i>Percent</i>	<i>1,000 Head</i>	<i>1,000 Head</i>	<i>Percent</i>
AL	18	17	94	157	158	101	175	175	100
AK	0.3	0.2	67	0.6	0.7	117	0.9	0.9	100
AZ	17	17	100	158	148	94	175	165	94
AR	85	90	106	205	190	93	290	280	97
CA	20	10	50	135	70	52	155	80	52
CO	160	155	97	700	565	81	860	720	84
CT	0.9	0.6	67	2.8	2.5	89	3.7	3.1	84
DE	2.5	2.5	100	6.5	6.5	100	9.0	9.0	100
FL	5.0	5.0	100	15.0	15.0	100	20.0	20.0	100
GA	40	37	93	225	193	86	265	230	87
HI	3.6	2.8	78	11.4	10.2	89	15.0	13.0	87
ID	6.0	6.0	100	26.0	27.0	104	32.0	33.0	103
IL	480	490	102	3,870	3,860	100	4,350	4,350	100
IN	320	280	88	3,380	3,220	95	3,700	3,500	95
IA	1,080	1,070	99	18,320	18,730	102	19,400	19,800	102
KS	180	165	92	1,700	1,565	92	1,880	1,730	92
KY	40	40	100	330	310	94	370	350	95
LA	1.5	2.0	133	9.5	9.0	95	11.0	11.0	100
ME	0.9	1.0	111	3.5	3.4	97	4.4	4.4	100
MD	5.0	4.0	80	28.0	27.0	96	33.0	31.0	94
MA	1.5	1.5	100	10.5	8.5	81	12.0	10.0	83
MI	100	110	110	930	910	98	1,030	1,020	99
MN	600	580	97	7,100	6,820	96	7,700	7,400	96
MS	35	36	103	310	339	109	345	375	109
MO	375	370	99	2,775	2,730	98	3,150	3,100	98
MT	18	22	122	162	153	94	180	175	97
NE	365	370	101	2,985	2,980	100	3,350	3,350	100
NV	0.4	0.5	125	2.6	3.0	115	3.0	3.5	117
NH	0.6	0.5	83	2.2	2.3	105	2.8	2.8	100
NJ	1.0	1.0	100	8.0	7.0	88	9.0	8.0	89
NM	0.2	0.2	100	1.8	1.8	100	2.0	2.0	100
NY	11.0	13.0	118	75.0	82.0	109	86.0	95.0	110
NC	1,020	980	96	9,180	8,620	94	10,200	9,600	94
ND	37	39	105	145	112	77	182	151	83
OH	160	170	106	1,670	1,760	105	1,830	1,930	105
OK	400	400	100	1,950	1,990	102	2,350	2,390	102
OR	4.0	4.0	100	17.0	16.0	94	21.0	20.0	95
PA	105	90	86	1,065	1,020	96	1,170	1,110	95
RI	0.6	0.5	83	1.7	1.3	76	2.3	1.8	78
SC	29	18	62	266	222	83	295	240	81
SD	165	155	94	1,295	1,165	90	1,460	1,320	90
TN	18	20	111	122	185	152	140	205	146
TX	105	100	95	1,055	1,020	97	1,160	1,120	97
UT	100	100	100	690	640	93	790	740	94
VT	0.6	0.6	100	2.1	2.0	95	2.7	2.6	96
VA	30	30	100	340	320	94	370	350	95
WA	4.0	4.0	100	25.0	21.0	84	29.0	25.0	86
WV	2.0	1.5	75	7.0	5.5	79	9.0	7.0	78
WI	50	40	80	390	320	82	440	360	82
WY	29	29	100	78	60	77	107	89	83
US	6,233	6,081	98	61,944	60,627	98	68,177	66,708	98

¹ May not add due to rounding.

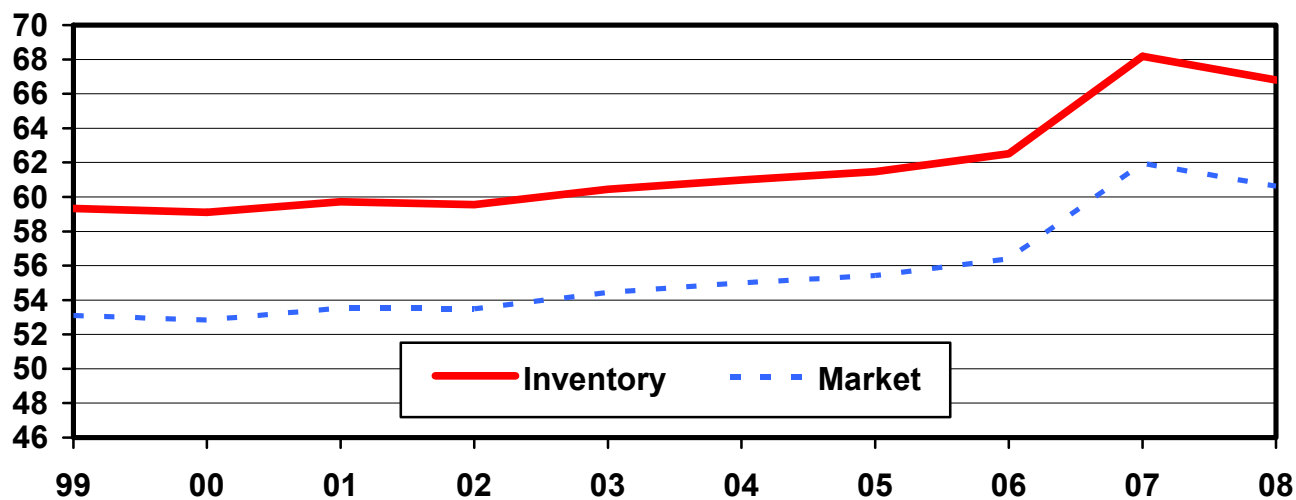
**Market Hogs and Pigs: Inventory Number by Weight Group,
State, and United States, December 1, 2007-2008¹**

State	Under 60 Lbs.		60-119 Lbs.		120-179 Lbs.		180 Lbs. and Over	
	2007	2008	2007	2008	2007	2008	2007	2008
	<i>1,000 Head</i>	<i>1,000 Head</i>	<i>1,000 Head</i>	<i>1,000 Head</i>	<i>1,000 Head</i>	<i>1,000 Head</i>	<i>1,000 Head</i>	<i>1,000 Head</i>
AL	65	70	32	37	30	23	30	28
AK	0.2	0.2	0.2	0.2	0.1	0.2	0.1	0.1
AZ	62	56	32	31	32	31	32	30
AR	150	145	20	15	15	15	20	15
CA	40	25	37	15	30	20	28	10
CO	360	300	90	70	90	70	160	125
CT	1.2	1.2	0.6	0.7	0.4	0.3	0.6	0.3
DE	3.0	3.0	1.0	1.0	1.5	1.5	1.0	1.0
FL	7.0	7.0	5.0	5.0	2.0	2.0	1.0	1.0
GA	94	84	51	38	41	37	39	34
HI	5.8	4.3	2.7	2.8	1.8	1.9	1.1	1.2
ID	12.0	12.0	6.0	7.0	5.0	6.0	3.0	2.0
IL	1,420	1,400	980	1,010	800	800	670	650
IN	1,260	1,170	850	830	680	610	590	610
IA	5,810	5,190	4,880	5,320	4,060	4,500	3,570	3,720
KS	580	515	365	305	295	245	460	500
KY	105	95	80	75	70	70	75	70
LA	3.0	3.0	3.0	2.0	2.0	2.0	1.5	2.0
ME	1.7	1.3	0.8	1.2	0.5	0.2	0.5	0.7
MD	9.0	9.0	7.0	6.0	8.0	8.0	4.0	4.0
MA	3.8	2.8	3.0	2.1	2.2	1.7	1.5	1.9
MI	315	310	235	240	200	175	180	185
MN	2,750	2,670	1,730	1,700	1,450	1,380	1,170	1,070
MS	111	131	77	80	61	64	61	64
MO	1,300	1,310	570	550	485	480	420	390
MT	55	55	40	36	36	33	31	29
NE	1,140	1,090	805	800	590	630	450	460
NV	0.7	1.2	0.7	0.8	0.6	0.6	0.6	0.4
NH	0.6	0.4	0.4	0.8	0.4	0.4	0.8	0.7
NJ	1.5	2.0	2.0	2.0	2.0	1.5	2.5	1.5
NM	0.5	0.5	0.5	0.5	0.5	0.5	0.3	0.3
NY	17.0	29.0	20.0	18.0	20.0	17.0	18.0	18.0
NC	3,430	3,300	2,220	1,930	1,890	1,750	1,640	1,640
ND	75	49	27	24	24	23	19	16
OH	650	660	405	445	360	400	255	255
OK	910	920	300	320	220	260	520	490
OR	5.0	5.0	4.5	4.0	4.0	3.5	3.5	3.5
PA	345	310	300	300	220	215	200	195
RI	0.7	0.6	0.3	0.4	0.4	0.2	0.3	0.1
SC	50	30	81	65	70	65	65	62
SD	465	445	285	245	295	240	250	235
TN	40	53	23	45	23	35	36	52
TX	315	320	230	200	230	205	280	295
UT	275	260	148	140	142	140	125	100
VT	0.9	0.9	0.4	0.4	0.3	0.4	0.5	0.3
VA	100	95	100	75	75	75	65	75
WA	6.0	7.0	7.0	6.0	6.0	5.0	6.0	3.0
WV	1.0	1.0	2.0	1.0	2.0	1.0	2.0	2.5
WI	150	120	100	85	70	55	70	60
WY	42	28	13	8	14	16	9	8
US	22,545	21,297	15,173	15,096	12,658	12,716	11,569	11,518

¹ Weight groups may not add to Market due to rounding.

U.S. Hog Inventory & Market Hogs December 1

Million Head



**Hogs and Pigs: Breeding, Market, and Total Inventory
by State and United States, March 1, 2007-2008 ¹**

State	Breeding			Market			Total		
	2007	2008		2007	2008		2007	2008	
		Number	as % of 2007		Number	as % of 2007		Number	as % of 2007
	<i>1,000 Head</i>	<i>1,000 Head</i>	<i>Percent</i>	<i>1,000 Head</i>	<i>1,000 Head</i>	<i>Percent</i>	<i>1,000 Head</i>	<i>1,000 Head</i>	<i>Percent</i>
AR	85	90	106	195	210	108	280	300	107
CO	150	155	103	680	625	92	830	780	94
IL	490	490	100	3,610	3,960	110	4,100	4,450	109
IN	310	310	100	2,940	3,340	114	3,250	3,650	112
IA	1,070	1,080	101	15,830	18,020	114	16,900	19,100	113
KS	175	170	97	1,685	1,710	101	1,860	1,880	101
MI	110	100	91	870	880	101	980	980	100
MN	590	590	100	6,310	6,910	110	6,900	7,500	109
MO	360	380	106	2,490	2,720	109	2,850	3,100	109
NE	360	370	103	2,740	2,930	107	3,100	3,300	106
NC	1,030	1,010	98	8,370	9,090	109	9,400	10,100	107
OH	160	165	103	1,540	1,685	109	1,700	1,850	109
OK	400	400	100	1,950	1,950	100	2,350	2,350	100
PA	100	100	100	1,010	1,050	104	1,110	1,150	104
SD	135	160	119	1,145	1,310	114	1,280	1,470	115
TX	95	105	111	875	985	113	970	1,090	112
WI	55	45	82	385	365	95	440	410	93
Oth Sts ²	474	480	101	3,121	3,278	105	3,596	3,758	105
US	6,149	6,200	101	55,746	61,018	109	61,896	67,218	109

¹ May not add due to rounding.

² Individual State estimates not available for the 33 Other States.

**Market Hogs and Pigs: Inventory Number by Weight Group,
State, and United States, March 1, 2007-2008¹**

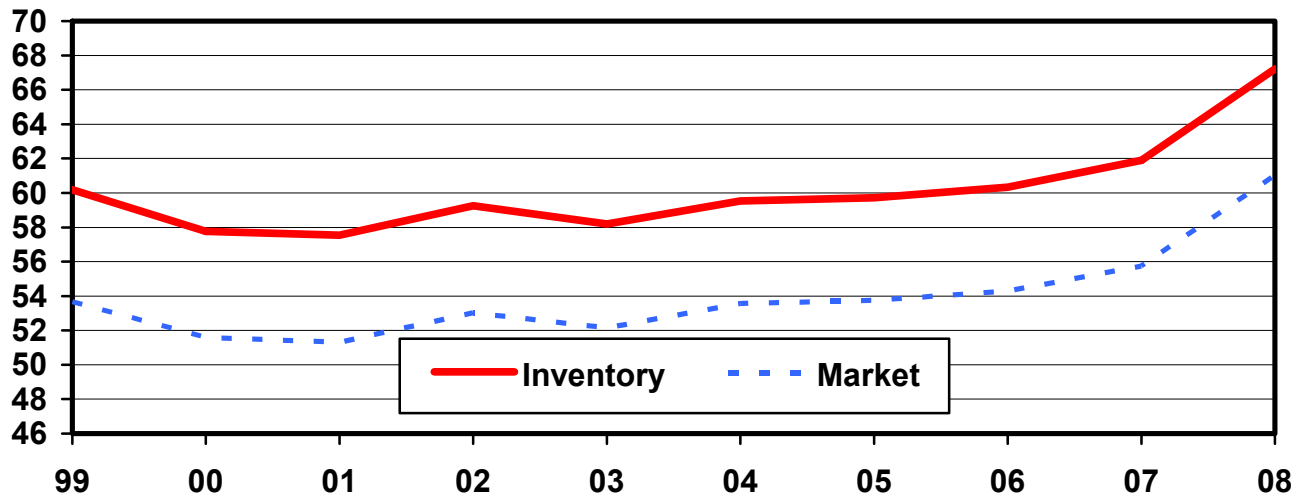
State	Under 60 Lbs.		60-119 Lbs.		120-179 Lbs.		180 Lbs. and Over	
	2007	2008	2007	2008	2007	2008	2007	2008
	<i>1,000 Head</i>	<i>1,000 Head</i>	<i>1,000 Head</i>	<i>1,000 Head</i>	<i>1,000 Head</i>	<i>1,000 Head</i>	<i>1,000 Head</i>	<i>1,000 Head</i>
AR	140	160	20	15	20	10	15	25
CO	380	320	105	85	75	80	120	140
IL	1,310	1,440	890	900	760	900	650	720
IN	1,070	1,200	730	840	580	680	560	620
IA	4,650	5,450	4,210	4,680	3,790	4,440	3,180	3,450
KS	575	575	310	370	335	295	465	470
MI	300	315	210	220	175	170	185	175
MN	2,400	2,690	1,540	1,650	1,330	1,460	1,040	1,110
MO	1,165	1,245	485	520	500	530	340	425
NE	1,050	1,080	730	760	530	660	430	430
NC	3,430	3,580	1,850	2,100	1,670	1,890	1,420	1,520
OH	605	635	375	410	320	390	240	250
OK	930	960	300	300	210	220	510	470
PA	300	320	295	300	225	230	190	200
SD	415	480	260	285	245	280	225	265
TX	315	330	205	200	190	210	165	245
WI	155	150	90	85	70	60	70	70
Oth Sts ²	1,189	1,207	750	770	653	688	529	614
US	20,379	22,137	13,355	14,490	11,678	13,193	10,334	11,199

¹ Weight groups may not add to Market Hogs and Pigs due to rounding.

² Individual State estimates not available for the 33 Other States.

U.S. Hog Inventory & Market Hogs March 1

Million Head



**Hogs and Pigs: Breeding, Market, and Total Inventory
by State and United States, June 1, 2007-2008¹**

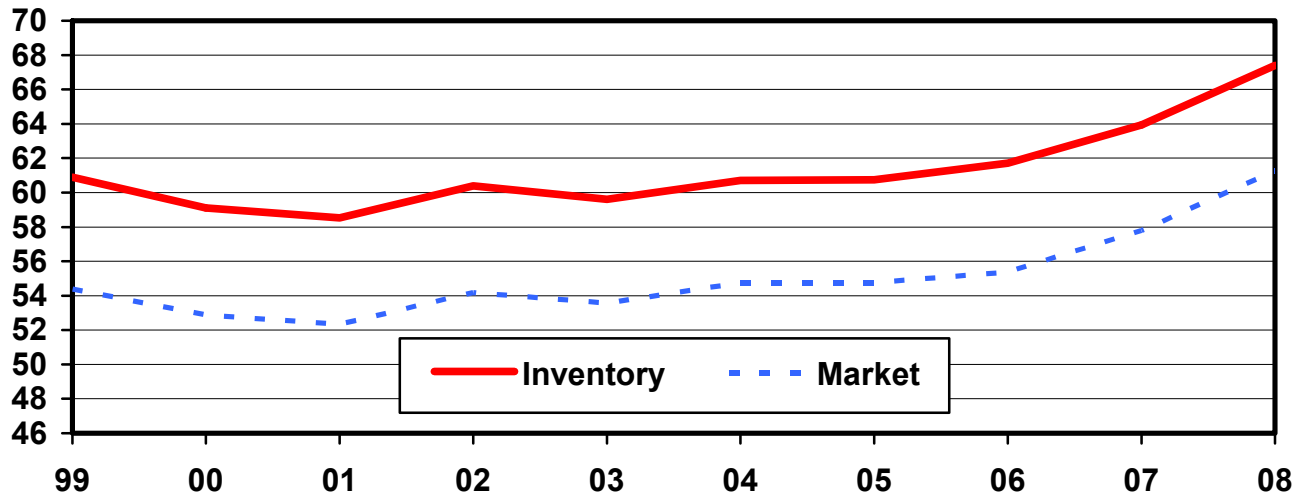
State	Breeding			Market			Total		
	2007	2008		2007	2008		2007	2008	
		Number	as % of 2007		Number	as % of 2007		Number	as % of 2007
	<i>1,000 Head</i>	<i>1,000 Head</i>	<i>Percent</i>	<i>1,000 Head</i>	<i>1,000 Head</i>	<i>Percent</i>	<i>1,000 Head</i>	<i>1,000 Head</i>	<i>Percent</i>
AR	85	95	112	205	215	105	290	310	107
CO	150	150	100	690	610	88	840	760	90
IL	480	460	96	3,520	3,890	111	4,000	4,350	109
IN	300	290	97	3,050	3,360	110	3,350	3,650	109
IA	1,060	1,080	102	17,140	18,320	107	18,200	19,400	107
KS	175	170	97	1,725	1,610	93	1,900	1,780	94
MI	110	100	91	910	930	102	1,020	1,030	101
MN	600	580	97	6,400	6,920	108	7,000	7,500	107
MO	375	380	101	2,675	2,720	102	3,050	3,100	102
NE	365	370	101	2,785	3,030	109	3,150	3,400	108
NC	1,020	1,020	100	8,680	9,080	105	9,700	10,100	104
OH	165	165	100	1,495	1,725	115	1,660	1,890	114
OK	400	400	100	1,920	1,960	102	2,320	2,360	102
PA	100	95	95	1,020	1,085	106	1,120	1,180	105
SD	145	150	103	1,145	1,280	112	1,290	1,430	111
TX	105	105	100	895	965	108	1,000	1,070	107
WI	50	45	90	360	345	96	410	390	95
Oth Sts ²	484	476	98	3,162	3,224	102	3,647	3,700	101
US	6,169	6,131	99	57,777	61,269	106	63,947	67,400	105

¹ May not add due to rounding.

² Individual State estimates not available for the 33 Other States.

U.S. Hog Inventory & Market Hogs June 1

Million Head



**Market Hogs and Pigs: Inventory Number by Weight Group,
State, and United States, June 1, 2007-2008¹**

State	Under 60 Lbs.		60-119 Lbs.		120-179 Lbs.		180 Lbs. and Over	
	2007	2008	2007	2008	2007	2008	2007	2008
	<i>1,000 Head</i>	<i>1,000 Head</i>	<i>1,000 Head</i>	<i>1,000 Head</i>	<i>1,000 Head</i>	<i>1,000 Head</i>	<i>1,000 Head</i>	<i>1,000 Head</i>
AR	150	160	20	20	15	15	20	20
CO	375	310	100	115	85	70	130	115
IL	1,300	1,400	910	990	750	850	560	650
IN	1,120	1,180	780	900	590	670	560	610
IA	5,460	5,430	4,770	5,060	3,860	4,450	3,050	3,380
KS	610	540	340	330	335	260	440	480
MI	325	325	215	230	190	185	180	190
MN	2,570	2,660	1,620	1,760	1,300	1,470	910	1,030
MO	1,300	1,295	545	545	505	475	325	405
NE	1,020	1,120	730	810	590	650	445	450
NC	3,600	3,700	2,000	2,150	1,670	1,760	1,410	1,470
OH	600	630	370	435	310	400	215	260
OK	930	990	310	300	220	220	460	450
PA	300	320	305	320	225	235	190	210
SD	425	480	270	305	240	255	210	240
TX	290	315	215	225	200	205	190	220
WI	155	130	85	90	65	60	55	65
Oth Sts ²	1,218	1,212	735	736	639	662	570	615
US	21,748	22,197	14,320	15,321	11,789	12,892	9,920	10,860

¹ Weight groups may not add to Market Hogs and Pigs due to rounding.

² Individual State estimates not available for the 33 Other States.

**Hogs and Pigs: Breeding, Market, and Total Inventory
by State and United States, September 1, 2007-2008¹**

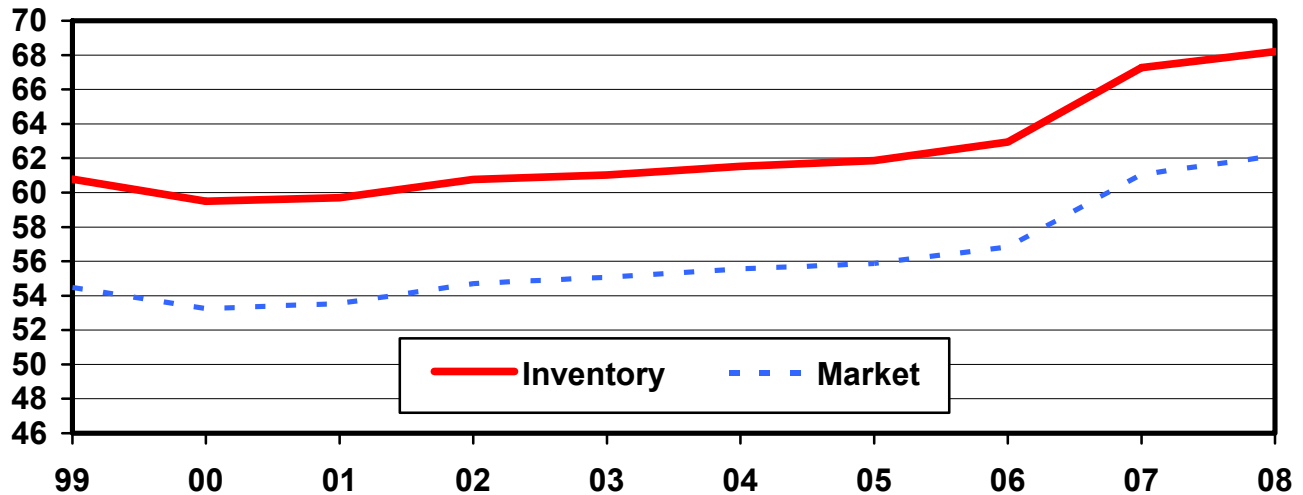
State	Breeding			Market			Total		
	2007	2008		2007	2008		2007	2008	
		Number	as % of 2007		Number	as % of 2007		Number	as % of 2007
	<i>1,000 Head</i>	<i>1,000 Head</i>	<i>Percent</i>	<i>1,000 Head</i>	<i>1,000 Head</i>	<i>Percent</i>	<i>1,000 Head</i>	<i>1,000 Head</i>	<i>Percent</i>
AR	85	95	112	205	220	107	290	315	109
CO	160	150	94	700	590	84	860	740	86
IL	490	470	96	3,710	3,880	105	4,200	4,350	104
IN	300	280	93	3,200	3,320	104	3,500	3,600	103
IA	1,050	1,070	102	17,850	18,730	105	18,900	19,800	105
KS	180	170	94	1,790	1,640	92	1,970	1,810	92
MI	100	100	100	980	950	97	1,080	1,050	97
MN	610	570	93	6,690	7,030	105	7,300	7,600	104
MO	385	375	97	2,765	2,775	100	3,150	3,150	100
NE	370	360	97	2,980	2,940	99	3,350	3,300	99
NC	1,020	1,000	98	9,380	9,300	99	10,400	10,300	99
OH	165	165	100	1,595	1,755	110	1,760	1,920	109
OK	400	400	100	2,050	2,060	100	2,450	2,460	100
PA	100	85	85	1,090	1,035	95	1,190	1,120	94
SD	155	150	97	1,225	1,270	104	1,380	1,420	103
TX	100	105	105	1,020	1,015	100	1,120	1,120	100
WI	50	45	90	370	335	91	420	380	90
Oth Sts ²	488	471	96	3,466	3,290	95	3,955	3,761	95
US	6,208	6,061	98	61,066	62,135	102	67,275	68,196	101

¹ May not add due to rounding.

² Individual State estimates not available for the 33 Other States.

U.S. Hog Inventory & Market Hogs September 1

Million Head



**Market Hogs and Pigs: Inventory Number by Weight Group,
State, and United States, September 1, 2007-2008¹**

State	Under 60 Lbs.		60-119 Lbs.		120-179 Lbs.		180 Lbs. and Over	
	2007	2008	2007	2008	2007	2008	2007	2008
	<i>1,000 Head</i>	<i>1,000 Head</i>	<i>1,000 Head</i>	<i>1,000 Head</i>	<i>1,000 Head</i>	<i>1,000 Head</i>	<i>1,000 Head</i>	<i>1,000 Head</i>
AR	150	170	20	20	15	15	20	15
CO	365	305	120	100	75	70	140	115
IL	1,400	1,390	910	1,020	780	820	620	650
IN	1,120	1,200	840	890	640	620	600	610
IA	5,790	5,550	4,920	5,240	4,040	4,460	3,100	3,480
KS	550	560	380	310	375	275	485	495
MI	335	355	230	240	230	185	185	170
MN	2,680	2,790	1,710	1,850	1,300	1,400	1,000	990
MO	1,300	1,350	545	565	530	495	390	365
NE	1,150	1,080	810	800	590	610	430	450
NC	3,700	3,700	2,310	2,050	1,820	1,860	1,550	1,690
OH	630	655	385	455	350	400	230	245
OK	950	980	340	320	250	240	510	520
PA	350	320	310	305	240	215	190	195
SD	425	470	290	300	270	260	240	240
TX	355	325	215	250	220	205	230	235
WI	150	125	105	90	60	55	55	65
Oth Sts ²	1,248	1,208	821	742	745	670	652	671
US	22,648	22,533	15,261	15,547	12,530	12,855	10,627	11,201

¹ Weight groups may not add to Market Hogs and Pigs due to rounding.

² Individual State estimates not available for the 33 Other States.

**Annual Farrowings: Number of Sows, Pigs per Litter, and Pig Crop
by State and United States, December-November 2007-2008^{1 2}**

State	Sows Farrowing			Pigs per Litter		Pig Crop		
	2007	2008		2007	2008	2007	2008	
		Number	as % of 2007				Number	as % of 2007
	<i>1,000 Head</i>	<i>1,000 Head</i>	<i>Percent</i>	<i>Number</i>	<i>Number</i>	<i>1,000 Head</i>	<i>1,000 Head</i>	<i>Percent</i>
AL	33.0	27.0	82	8.73	8.93	288.0	241.0	84
AK	0.25	0.18	72	9.20	8.94	2.30	1.61	70
AZ	32.0	32.0	100	9.47	9.78	303.0	313.0	103
AR	171	185	108	9.70	9.72	1,658	1,799	109
CA	33.0	21.0	64	10.15	9.33	335.0	196.0	59
CO	329	313	95	8.97	8.90	2,952	2,787	94
CT	0.70	0.50	71	7.80	8.10	5.46	4.05	74
DE	6.00	6.00	100	9.33	9.33	56.0	56.0	100
FL	8.00	8.00	100	7.00	7.00	56.0	56.0	100
GA	75.0	71.0	95	8.91	9.08	668.0	645.0	97
HI	3.20	2.80	88	7.50	7.14	24.0	20.0	83
ID	8.00	7.80	98	8.88	8.85	71.0	69.0	97
IL	950	960	101	9.13	9.36	8,671	8,989	104
IN	590	580	98	8.97	9.14	5,290	5,299	100
IA	1,935	2,040	105	9.21	9.36	17,814	19,098	107
KS	354	323	91	9.00	9.18	3,186	2,966	93
KY	75.0	73.0	97	9.35	9.18	701.0	670.0	96
LA	3.00	3.30	110	6.97	6.79	20.90	22.41	107
ME	1.30	1.30	100	6.80	7.20	8.84	9.36	106
MD	8.00	8.50	106	7.75	8.00	62.0	68.0	110
MA	1.60	1.80	113	7.50	7.70	12.00	13.86	116
MI	210	211	100	9.11	9.51	1,913	2,006	105
MN	1,155	1,135	98	9.35	9.60	10,803	10,895	101
MS	75.5	75.0	99	9.46	9.63	714.0	722.0	101
MO	765	775	101	9.20	9.49	7,041	7,356	104
MT	33.5	36.5	109	10.06	10.16	337.0	371.0	110
NE	755	745	99	9.43	9.65	7,120	7,189	101
NV	0.58	0.40	69	7.29	6.58	4.23	2.63	62
NH	0.60	0.40	67	7.50	8.30	4.50	3.32	74
NJ	1.00	1.00	100	7.00	6.85	7.00	6.85	98
NM	0.40	0.40	100	8.00	8.00	3.20	3.20	100
NY	18.00	18.00	100	9.78	9.39	176.00	169.0	96
NC	2,250	2,170	96	9.11	9.44	20,504	20,478	100
ND	62.0	67.0	108	9.85	9.88	611.0	662.0	108
OH	338	355	105	9.33	9.26	3,153	3,289	104
OK	770	740	96	9.29	9.35	7,152	6,920	97
OR	5.40	5.00	93	8.15	8.80	44.0	44.0	100
PA	188	163	87	9.21	9.48	1,731	1,545	89
RI	0.60	0.70	117	7.90	7.30	4.74	5.11	108
SC	52.0	49.0	94	9.10	9.16	473.0	449.0	95
SD	313	339	108	9.56	9.73	2,991	3,297	110
TN	43.0	43.0	100	9.07	9.21	390.0	396.0	102
TX	209	207	99	9.16	8.92	1,914	1,846	96
UT	160.0	163.0	102	9.78	9.90	1,565.0	1,614.0	103
VT	0.70	0.60	86	7.40	8.00	5.18	4.80	93
VA	59.0	56.0	95	9.31	9.43	549.0	528.0	96
WA	5.20	5.40	104	8.08	9.07	42.0	49.0	117
WV	1.90	1.40	74	7.58	7.43	14.40	10.40	72
WI	105	99	94	8.90	9.03	935	894	96
WY	53.0	63.5	120	9.21	9.84	488.0	625.0	128
US	12,247	12,190	100	9.22	9.41	112,874	114,704	102

¹ December preceding year.

² May not add due to rounding.

**Farrowings: Number of Sows, Pigs per Litter, and Pig Crop
by State and United States, December-February 2007-2009^{1 2}**

State	Sows Farrowing				Pigs Per Litter		Pig Crop ³		
	2007	2008	2009 ⁴		2007	2008	2007	2008	
			Number	as % of 2008				Number	as % of 2007
	<i>1,000 Head</i>	<i>1,000 Head</i>	<i>1,000 Head</i>	<i>Percent</i>	<i>Number</i>	<i>Number</i>	<i>1,000 Head</i>	<i>1,000 Head</i>	<i>Percent</i>
AR	39	44	45	102	9.45	9.60	369	422	114
CO	83	84	79	94	8.80	9.05	730	760	104
IL	220	240	250	104	9.05	9.25	1,991	2,220	112
IN	140	150	140	93	8.80	9.00	1,232	1,350	110
IA	450	510	480	94	9.00	9.20	4,050	4,692	116
KS	88	86	81	94	8.90	9.10	783	783	100
MI	49	52	51	98	8.75	9.45	429	491	114
MN	275	285	280	98	9.25	9.25	2,544	2,636	104
MO	180	190	190	100	9.05	9.20	1,629	1,748	107
NE	175	190	180	95	9.20	9.50	1,610	1,805	112
NC	540	550	540	98	9.10	9.20	4,914	5,060	103
OH	84	89	82	92	9.15	9.15	769	814	106
OK	190	180	180	100	9.20	9.35	1,748	1,683	96
PA	44	43	39	91	9.00	9.50	396	409	103
SD	67	88	81	92	9.50	9.60	637	845	133
TX	45	54	46	85	8.90	9.00	401	486	121
WI	27	26	22	85	8.95	8.95	242	233	96
Oth Sts ⁵	209	210	205	98	9.18	9.29	1,921	1,950	102
US	2,905	3,071	2,971	97	9.09	9.24	26,395	28,387	108

¹ December preceding year.

² May not add due to rounding.

³ Number of pigs born December-February that were still on hand March 1, or had been sold.

⁴ Intentions.

⁵ Individual State estimates not available for the 33 Other States.

**Farrowings: Number of Sows, Pigs per Litter, and Pig Crop
by State and United States, March-May 2007-2009 ¹**

State	Sows Farrowing				Pigs per Litter		Pig Crop ²		
	2007	2008	2009 ³		2007	2008	2007	2008	
			Number	as % of 2008				Number	as % of 2007
	<i>1,000 Head</i>	<i>1,000 Head</i>	<i>1,000 Head</i>	<i>Percent</i>	<i>Number</i>	<i>Number</i>	<i>1,000 Head</i>	<i>1,000 Head</i>	<i>Percent</i>
AR	42	45	45	100	9.80	9.80	412	441	107
CO	80	82	78	95	8.90	8.85	712	726	102
IL	240	230	250	109	9.05	9.35	2,172	2,151	99
IN	145	145	140	97	8.95	9.10	1,298	1,320	102
IA	465	520	480	92	9.20	9.35	4,278	4,862	114
KS	87	80	81	101	8.95	9.10	779	728	93
MI	53	53	55	104	9.00	9.70	477	514	108
MN	290	285	280	98	9.35	9.50	2,712	2,708	100
MO	195	190	195	103	9.15	9.40	1,784	1,786	100
NE	185	185	185	100	9.45	9.60	1,748	1,776	102
NC	560	550	550	100	9.05	9.35	5,068	5,143	101
OH	82	89	88	99	9.30	9.40	763	837	110
OK	195	185	185	100	9.40	9.45	1,833	1,748	95
PA	45	42	39	93	9.10	9.45	410	397	97
SD	73	85	82	96	9.55	9.70	697	825	118
TX	48	52	49	94	9.30	8.60	446	447	100
WI	26	26	21	81	8.90	9.10	231	237	103
Oth Sts ⁴	219	211	204	97	9.36	9.54	2,050	2,011	98
US	3,030	3,055	3,007	98	9.20	9.38	27,870	28,657	103

¹ May not add due to rounding.

² Number of pigs born March-May that were still on hand June 1, or had been sold.

³ Intentions.

⁴ Individual State estimates not available for the 33 Other States.

**Farrowings: Number of Sows, Pigs per Litter, and Pig Crop
by State and United States, June-August 2007-2008¹**

State	Sows Farrowing			Pigs per Litter		Pig Crop ²		
	2007	2008		2007	2008	2007	2008	
		Number	as % of 2007				Number	as % of 2007
	<i>1,000 Head</i>	<i>1,000 Head</i>	<i>Percent</i>	<i>Number</i>	<i>Number</i>	<i>1,000 Head</i>	<i>1,000 Head</i>	<i>Percent</i>
AR	46	50	109	9.70	9.70	446	485	109
CO	83	76	92	9.15	8.90	759	676	89
IL	245	240	98	9.15	9.45	2,242	2,268	101
IN	150	145	97	9.10	9.25	1,365	1,341	98
IA	480	510	106	9.30	9.40	4,464	4,794	107
KS	90	81	90	9.00	9.15	810	741	91
MI	55	53	96	9.20	9.25	506	490	97
MN	295	285	97	9.50	9.80	2,803	2,793	100
MO	195	195	100	9.30	9.70	1,814	1,892	104
NE	200	185	93	9.50	9.70	1,900	1,795	94
NC	580	560	97	9.10	9.65	5,278	5,404	102
OH	86	89	103	9.40	9.50	808	846	105
OK	195	195	100	9.35	9.40	1,823	1,833	101
PA	48	38	79	9.60	9.60	461	365	79
SD	83	82	99	9.60	9.80	797	804	101
TX	58	52	90	9.05	8.55	525	445	85
WI	26	24	92	8.90	9.10	231	218	94
Oth Sts ³	218	215	99	9.49	9.58	2,063	2,060	100
US	3,133	3,075	98	9.29	9.51	29,095	29,250	101

¹ May not add due to rounding.

² Number of pigs born June-August that were still on hand September 1, or had been sold.

³ Individual State estimates not available for the 33 Other States.

**Farrowings: Number of Sows, Pigs per Litter, and Pig Crop
by State and United States, September-November 2007-2008 ¹**

State	Sows Farrowing			Pigs per Litter		Pig Crop ²		
	2007	2008		2007	2008	2007	2008	
		Number	as % of 2007				Number	as % of 2007
	<i>1,000 Head</i>	<i>1,000 Head</i>	<i>Percent</i>	<i>Number</i>	<i>Number</i>	<i>1,000 Head</i>	<i>1,000 Head</i>	<i>Percent</i>
AR	44	46	105	9.80	9.80	431	451	105
CO	83	71	86	9.05	8.80	751	625	83
IL	245	250	102	9.25	9.40	2,266	2,350	104
IN	155	140	90	9.00	9.20	1,395	1,288	92
IA	540	500	93	9.30	9.50	5,022	4,750	95
KS	89	76	85	9.15	9.40	814	714	88
MI	53	53	100	9.45	9.65	501	511	102
MN	295	280	95	9.30	9.85	2,744	2,758	101
MO	195	200	103	9.30	9.65	1,814	1,930	106
NE	195	185	95	9.55	9.80	1,862	1,813	97
NC	570	510	89	9.20	9.55	5,244	4,871	93
OH	86	88	102	9.45	9.00	813	792	97
OK	190	180	95	9.20	9.20	1,748	1,656	95
PA	51	40	78	9.10	9.35	464	374	81
SD	90	84	93	9.55	9.80	860	823	96
TX	58	49	84	9.35	9.55	542	468	86
WI	26	23	88	8.90	8.95	231	206	89
Oth Sts ³	215	215	100	9.37	9.44	2,011	2,030	101
US	3,180	2,990	94	9.28	9.50	29,513	28,410	96

¹ May not add due to rounding.

² Number of pigs born September-November that were still on hand December 1, or had been sold.

³ Individual State estimates not available for the 33 Other States.

**Monthly Farrowings: Number of Sows, Pigs per Litter, and Pig Crop,
United States, December-November 2007-2008^{1 2}**

Month	Sows Farrowing		Pigs per Litter		Pig Crop	
	2007	2008	2007	2008	2007	2008
	<i>1,000 Head</i>	<i>1,000 Head</i>	<i>Number</i>	<i>Number</i>	<i>1,000 Head</i>	<i>1,000 Head</i>
Dec ¹	960	1,017	9.08	9.22	8,712	9,381
Jan	972	1,028	9.10	9.24	8,841	9,501
Feb	973	1,026	9.09	9.26	8,842	9,505
Mar	1,022	1,049	9.14	9.35	9,336	9,813
Apr	1,005	999	9.24	9.38	9,282	9,374
May	1,003	1,007	9.22	9.40	9,252	9,470
Jun	1,047	1,046	9.29	9.48	9,728	9,921
Jul	1,040	1,020	9.31	9.52	9,680	9,715
Aug	1,046	1,009	9.26	9.53	9,687	9,614
Sep	1,078	1,034	9.27	9.50	9,993	9,826
Oct	1,062	992	9.30	9.48	9,873	9,404
Nov	1,040	964	9.28	9.52	9,647	9,180
Total	12,247	12,190	9.22	9.41	112,874	114,704

¹ December preceding year.

² Monthly values may not add to quarterly or annual totals due to rounding.

Reliability of December 1 Hogs and Pigs Estimates

Survey Procedures: A random sample of roughly 11,900 U.S. producers was surveyed to provide data for these estimates. Survey procedures ensured that all hog and pig producers, regardless of size, had a chance to be included in the survey. Large producers were sampled more heavily than small operations. During the first half of December 2008, data were collected from about 9,800 operations, 82 percent of the total sample. The data collected were received by electronic data reporting (EDR), mail, telephone, and face-to-face personal interviews. Regardless of when operations responded, they were asked to report inventories as of December 1, 2008.

Estimation Procedures: Hogs and pigs estimates were prepared by the Agricultural Statistics Board after reviewing recommendations and analysis submitted by each field office. National and State survey data were reviewed for reasonableness with each other and with estimates from past years using a balance sheet. The balance sheet begins with the previous inventory estimate, adds the estimates of births and imports, and subtracts the estimates of slaughter, exports, and deaths. This indicated ending inventory level is compared to the Agricultural Statistics Board estimate for reasonableness.

Revision Policy: Revisions to previous estimates are made to improve quarter to quarter relationships. Estimates for the previous four quarters are subject to revision when current estimates are made. In December, estimates for all quarters of the current and previous year are reviewed. The reviews are primarily based on hog check-off receipts and slaughter. Estimates will also be reviewed after data from the Department of Agriculture five-year Census of Agriculture are available. No revisions will be made after that date.

Reliability: Since all hog raising operations are not included in the sample, survey estimates are subject to sampling variability. Survey results are also subject to non-sampling errors such as omissions, duplication, and mistakes in reporting, recording, and processing the data. The affects of these errors cannot be measured directly. They are minimized through rigid quality controls in the data collection process and through a careful review of all reported data for consistency and reasonableness.

To assist users in evaluating the reliability of the estimates in this report, the "**Root Mean Square Error**" is shown for selected items in the following table. The "Root Mean Square Error" is a statistical measure based on past performance and is computed using the difference between first and final estimates. The "Root Mean Square Error" for hog inventory estimates over the past 20 quarters is 1.6 percent. This means that chances are 2 out of 3 that the final estimate will not be above or below the current estimate of 66.7 million head by more than 1.6 percent. Chances are 9 out of 10 that the difference will not exceed 2.7 percent.

Reliability of December 1 Hog Estimates ¹

Item	Root Mean Square Error	90% Confidence Level		Difference Between First and Latest Estimates			Quarters	
				Average	Smallest	Largest	First Above Latest	First Below Latest
				<i>1,000 Head</i>	<i>1,000 Head</i>	<i>1,000 Head</i>	<i>Number</i>	<i>Number</i>
All Hogs & Pigs	1.6	2.7	1,801	696	80	3,067	4	16
Pig Crop	2.0	3.4	966	357	1	1,644	4	16
Expected Farrowings								
Next Quarter	2.4	4.1	122	47	3	216	3	17
Following Quarter	2.7	4.7	141	59	3	220	3	17

¹ Based on quarterly records for the past 20 quarters.

Information Contacts

Listed below are the commodity specialists in the Livestock Branch of the National Agricultural Statistics Service to contact for additional information.

Dan Kerestes, Chief, Livestock Branch (202) 720-3570

Livestock Section

Scott Hollis, Head, Livestock Section (202) 690-2424
 Jim Collom - Dairy Products (202) 690-3236
 Joe Gaynor - Dairy Products Prices (202) 690-2168
 Jason Hardegree - Cattle, Cattle on Feed (202) 720-3040
 Benita Hodge - Livestock Slaughter (515) 284-4340
 Everett Olbert - Sheep and Goats (202) 720-4751
 Mike Miller - Milk Production and Milk Cows (202) 720-3278
 Nick Streff - Hogs and Pigs (202) 720-3106

ACCESS TO REPORTS!!

For your convenience, there are several ways to obtain NASS reports, data products, and services:

INTERNET ACCESS

All NASS reports are available free of charge on the worldwide Internet. For access, connect to the Internet and go to the NASS Home Page at: www.nass.usda.gov.

E-MAIL SUBSCRIPTION

All NASS reports are available by subscription free of charge direct to your e-mail address. Starting with the NASS Home Page at www.nass.usda.gov, under the right navigation, *Receive reports by Email*, click on **National** or **State**. Follow the instructions on the screen.

PRINTED REPORTS OR DATA PRODUCTS

CALL OUR TOLL-FREE ORDER DESK: 800-999-6779 (U.S. and Canada)
Other areas, please call 703-605-6220 FAX: 703-605-6900
(Visa, MasterCard, check, or money order acceptable for payment.)

ASSISTANCE

For **assistance** with general agricultural statistics or further information about NASS or its products or services, contact the **Agricultural Statistics Hotline** at **800-727-9540**, 7:30 a.m. to 4:00 p.m. ET, or e-mail: nass@nass.usda.gov.

The U.S. Department of Agriculture (USDA) prohibits discrimination in all its programs and activities on the basis of race, color, national origin, age, disability, and where applicable, sex, marital status, familial status, parental status, religion, sexual orientation, genetic information, political beliefs, reprisal, or because all or a part of an individual's income is derived from any public assistance program. (Not all prohibited bases apply to all programs.) Persons with disabilities who require alternative means for communication of program information (Braille, large print, audiotape, etc.) should contact USDA's TARGET Center at (202) 720-2600 (voice and TDD).

To file a complaint of discrimination, write to USDA, Director, Office of Civil Rights, 1400 Independence Avenue, S.W., Washington, D.C. 20250-9410, or call (800) 795-3272 (voice) or (202) 720-6382 (TDD). USDA is an equal opportunity provider and employer.