

# Quarterly Hogs and Pigs

Released June 26, 2009, by the National Agricultural Statistics Service (NASS), Agricultural Statistics Board, U.S. Department of Agriculture. For information on *Quarterly Hogs and Pigs* call Nick Streff at 202-720-3106, office hours 7:30 a.m. to 4:00 p.m. ET.

## U.S. Hog Inventory down 2 Percent

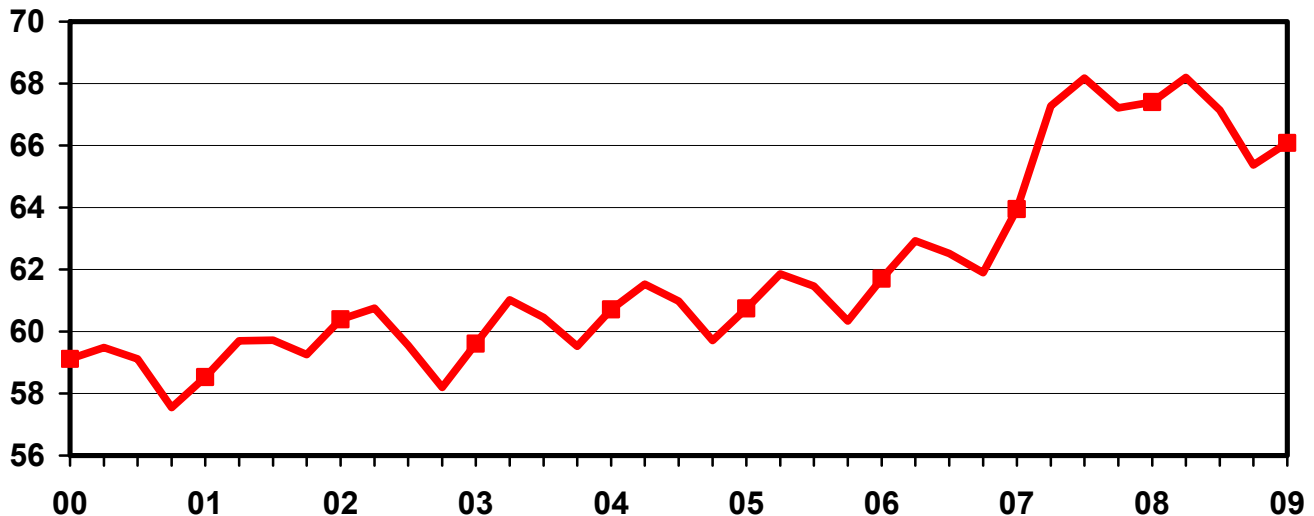
**U.S. inventory** of all hogs and pigs on June 1, 2009 was 66.1 million head. This was down 2 percent from June 1, 2008 but up 1 percent from March 1, 2009.

**Breeding inventory**, at 5.97 million head, was down 3 percent from last year and down slightly from the previous quarter. **Market hog inventory**, at 60.1 million head, was down 2 percent from last year but up 1 percent from last quarter.

**The March-May 2009 pig crop**, at 28.5 million head, was down slightly from 2008 but up 2 percent from 2007. Sows farrowing during this period totaled 2.97 million head, down 3 percent from 2008 and down 2 percent from 2007. The sows farrowed during this quarter represented 50 percent of the breeding herd. The average pigs saved per litter was a record high 9.61 for the March-May 2009 period, compared to 9.38 last year. Pigs saved per litter by size of operation ranged from 7.40 for operations with 1-99 hogs and pigs to 9.70 for operations with more than 5,000 hogs and pigs.

## U.S. Quarterly Hogs and Pigs Inventory June 1

Million Head



**U.S. hog producers** intend to have 2.97 million sows farrow during the June-August 2009 quarter, down 3 percent from the actual farrowings during the same period in 2008 and down 5 percent from 2007. Intended farrowings for September-November 2009, at 2.96 million sows, are down 2 percent from 2008 and down 7 percent from 2007.

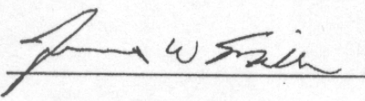
The total number of hogs under contract owned by operations with over 5,000 head, but raised by contractees, accounted for 46 percent of the total U.S. hog inventory, up from 41 percent last year.

### Revisions

All inventory and pig crop estimates for June 2008 through March 2009 were reviewed using slaughter, death loss and current import and export data. Based on this review, adjustments of less than one percent were made to the December 2008 total inventory and March 2009 total inventory. An adjustment of less than one and a half percent was made to the September-November 2008 pig crop.

---

This report was approved on June 26, 2009.



Acting Secretary of  
Agriculture  
James W. Miller



Agricultural Statistics Board  
Chairperson  
Carol C. House

## Contents

	<b>Page</b>
Quarterly U.S. Inventory by Class and Weight Group, 2008-2009 .....	1
Quarterly U.S. Sows Farrowed, Pig Crop, and Pigs per Litter, 2007-2009 .....	2
Quarterly U.S. Pigs per Litter by Size of Operation, 2008-2009 .....	2
Hogs and Pigs: Inventory by State and U.S., 2007-2009	
March 1 .....	5
June 1 .....	7
September 1 .....	9
December 1 .....	11
Farrowings: Number of Sows, Pigs per Litter, Pig Crop by State and U.S., 2007-2009	
December-February .....	13
March-May .....	14
June-August .....	15
September-November .....	16
Monthly U.S. Farrowings, December-November 2008-2009 .....	17
Reliability Statement .....	18
Information Contacts .....	19

**Hogs and Pigs: Inventory Number by Class, Weight Group,  
and Quarter, United States, 2008-2009**

Item	2008	2009	2009 as a % 2008
	<i>1,000 Head</i>	<i>1,000 Head</i>	<i>Percent</i>
March 1 Inventory <sup>1</sup>			
All Hogs and Pigs	67,218	65,369	97
Kept for Breeding	6,200	5,991	97
Market	61,018	59,378	97
Market Hogs and Pigs by Weight Groups			
Under 60 Pounds	22,137	21,458	97
60-119 Pounds	14,490	14,326	99
120-179 Pounds	13,193	12,732	97
180 Pounds and Over	11,199	10,862	97
June 1 Inventory <sup>1</sup>			
All Hogs and Pigs	67,400	66,079	98
Kept for Breeding	6,131	5,967	97
Market	61,269	60,112	98
Market Hogs and Pigs by Weight Groups			
Under 60 Pounds	22,197	21,673	98
60-119 Pounds	15,321	15,008	98
120-179 Pounds	12,892	12,584	98
180 Pounds and Over	10,860	10,847	100
September 1 Inventory <sup>1</sup>			
All Hogs and Pigs	68,196		
Kept for Breeding	6,061		
Market	62,135		
Market Hogs and Pigs by Weight Groups			
Under 60 Pounds	22,683		
60-119 Pounds	15,397		
120-179 Pounds	12,855		
180 Pounds and Over	11,201		
December 1 Inventory <sup>1</sup>			
All Hogs and Pigs	67,148		
Kept for Breeding	6,061		
Market	61,087		
Market Hogs and Pigs by Weight Groups			
Under 60 Pounds	21,727		
60-119 Pounds	15,096		
120-179 Pounds	12,731		
180 Pounds and Over	11,533		

<sup>1</sup> May not add due to rounding.

**Farrowings: Number of Sows, Pig Crop, and Pigs per Litter,  
United States, 2007-2009**

Item	2007	2008	2009	2009 as % of	
				2007	2008
	<i>1,000 Head</i>	<i>1,000 Head</i>	<i>1,000 Head</i>	<i>Percent</i>	<i>Percent</i>
Sows Farrowing					
Dec-Feb <sup>1</sup>	2,905	3,071	2,978	103	97
Mar-May	3,030	3,052	2,971	98	97
Dec-May <sup>1 2</sup>	5,935	6,123	5,949	100	97
Jun-Aug <sup>3</sup>	3,133	3,075	2,974	95	97
Sep-Nov <sup>3</sup>	3,180	3,028	2,962	93	98
Jun-Nov <sup>2 3</sup>	6,312	6,103	5,936	94	97
Pig Crop					
Dec-Feb <sup>1</sup>	26,395	28,387	28,230	107	99
Mar-May	27,870	28,630	28,547	102	100
Dec-May <sup>1 2</sup>	54,266	57,017	56,777	105	100
Jun-Aug	29,095	29,240			
Sep-Nov	29,513	28,770			
Jun-Nov <sup>2</sup>	58,608	58,010			
	<i>Number</i>	<i>Number</i>	<i>Number</i>	<i>Percent</i>	<i>Percent</i>
Pigs per Litter					
Dec-Feb <sup>1</sup>	9.09	9.24	9.48	104	103
Mar-May	9.20	9.38	9.61	104	102
Dec-May <sup>1</sup>	9.14	9.31	9.54	104	102
Jun-Aug	9.29	9.51			
Sep-Nov	9.28	9.50			
Jun-Nov	9.28	9.51			

<sup>1</sup> December preceding year.

<sup>2</sup> May not add due to rounding.

<sup>3</sup> Intentions for 2009.

**Pigs per Litter: By Size of Operation, United States, 2008-2009**

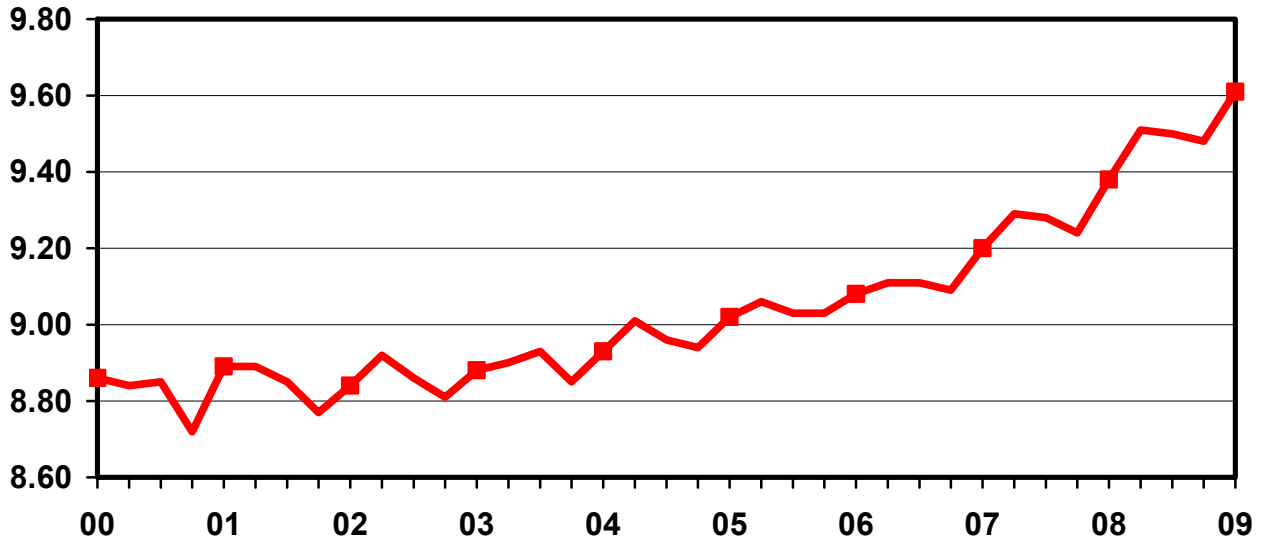
Pig Crop	Pigs per Litter on Operations Having <sup>1</sup>					
	1-99 Head	100-499 Head	500-999 Head	1,000-1,999 Head	2,000-4,999 Head	5,000+ Head
	<i>Number</i>	<i>Number</i>	<i>Number</i>	<i>Number</i>	<i>Number</i>	<i>Number</i>
2008						
Dec-Feb <sup>2</sup>	7.50	8.20	8.40	8.80	9.20	9.30
Mar-May	7.70	8.20	8.40	9.00	9.40	9.40
Jun-Aug	7.80	8.30	8.40	9.00	9.50	9.60
Sep-Nov	7.50	8.20	8.30	9.00	9.40	9.60
2009						
Dec-Feb <sup>2</sup>	7.30	8.10	8.40	9.00	9.40	9.50
Mar-May	7.40	8.10	8.50	9.10	9.60	9.70
Jun-Aug						
Sep-Nov						

<sup>1</sup> Pigs per litter rounded to the nearest tenth.

<sup>2</sup> December preceding year.

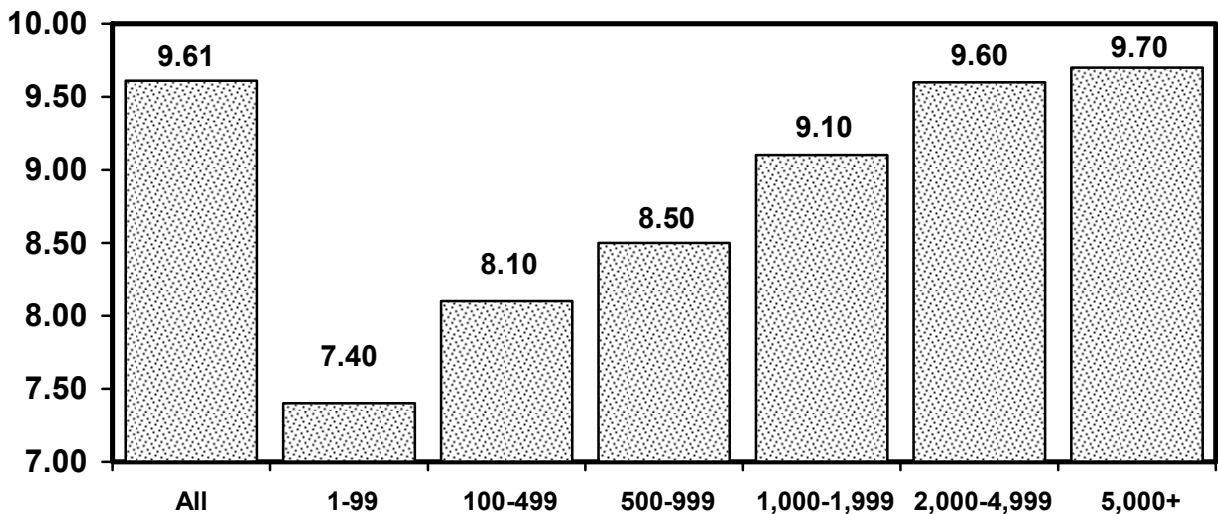
## U.S. Quarterly Litter Rate March-May

Number Head



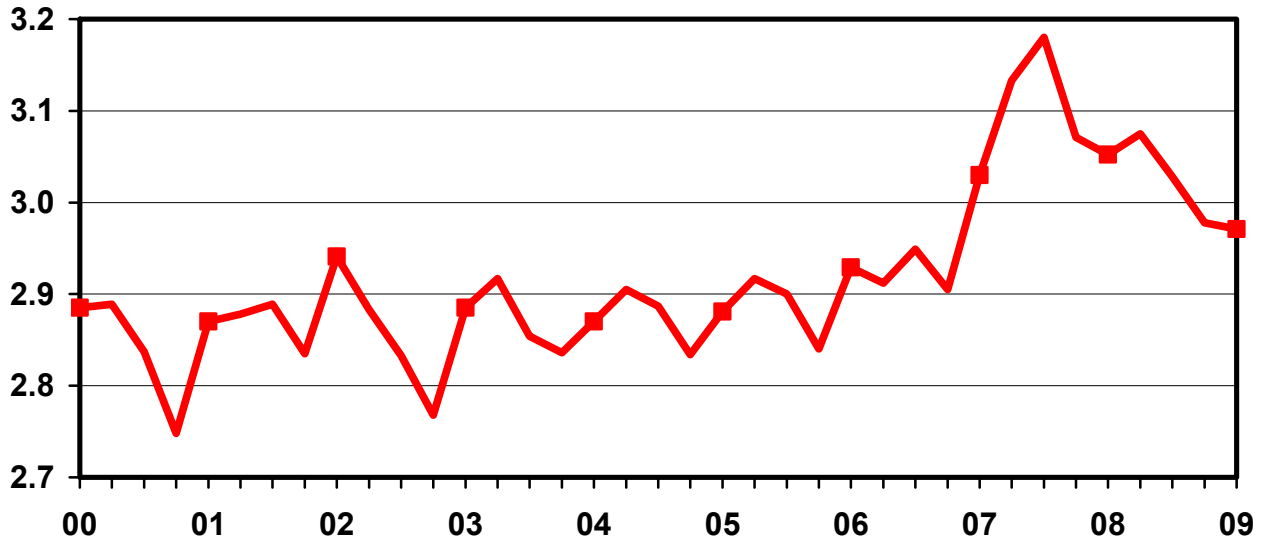
## U.S. Pigs per Litter By Size of Operation, March-May 2009

Number Head



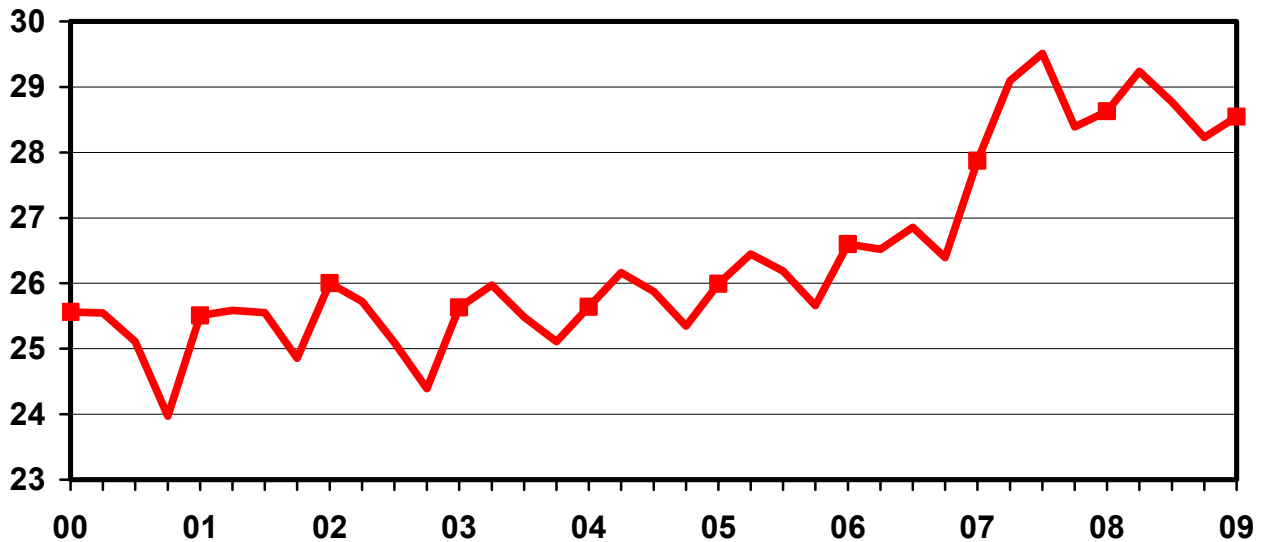
## U.S. Quarterly Sows Farrowed March-May

Million Head



## U.S. Quarterly Pig Crop March-May

Million Head



**Hogs and Pigs: Breeding, Market, and Total Inventory  
by State and United States, March 1, 2008-2009**

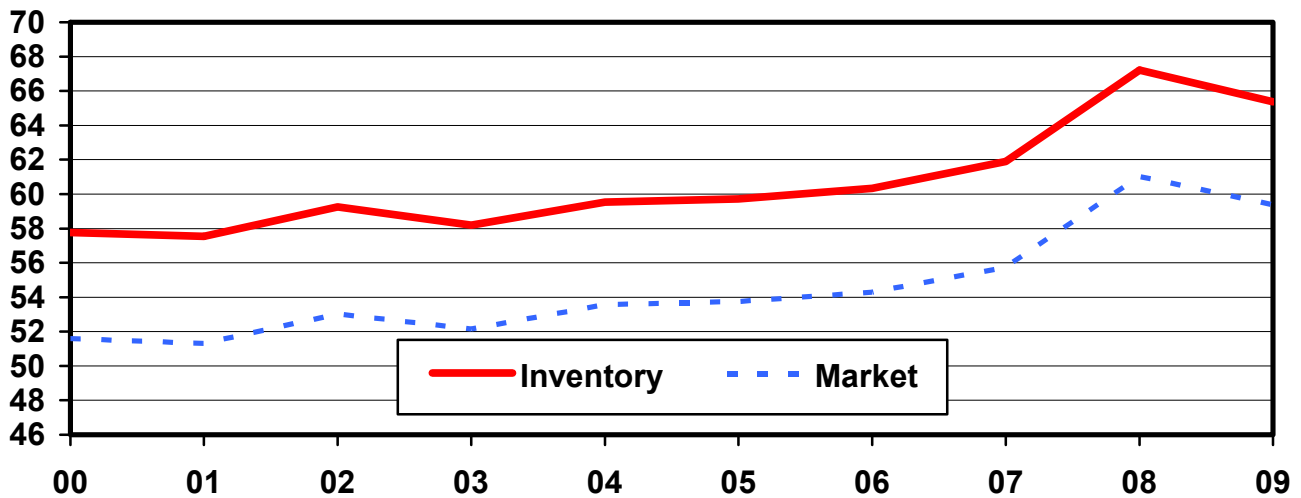
State	Breeding			Market			Total		
	2008	2009		2008	2009		2008	2009	
		Number	as % of 2008		Number	as % of 2008		Number	as % of 2008
	<i>1,000 Head</i>	<i>1,000 Head</i>	<i>Percent</i>	<i>1,000 Head</i>	<i>1,000 Head</i>	<i>Percent</i>	<i>1,000 Head</i>	<i>1,000 Head</i>	<i>Percent</i>
AR	90	85	94	210	190	90	300	275	92
CO	155	150	97	625	590	94	780	740	95
IL	490	480	98	3,960	3,770	95	4,450	4,250	96
IN	310	270	87	3,340	3,230	97	3,650	3,500	96
IA	1,080	1,040	96	18,020	18,260	101	19,100	19,300	101
KS	170	165	97	1,710	1,655	97	1,880	1,820	97
MI	100	110	110	880	930	106	980	1,040	106
MN	590	580	98	6,910	6,720	97	7,500	7,300	97
MO	380	365	96	2,720	2,585	95	3,100	2,950	95
NE	370	385	104	2,930	2,765	94	3,300	3,150	95
NC	1,010	980	97	9,090	8,420	93	10,100	9,400	93
OH	165	170	103	1,685	1,810	107	1,850	1,980	107
OK	400	400	100	1,950	1,940	99	2,350	2,340	100
PA	100	90	90	1,050	1,020	97	1,150	1,110	97
SD	160	150	94	1,310	1,160	89	1,470	1,310	89
TX	105	95	90	985	995	101	1,090	1,090	100
WI	45	45	100	365	325	89	410	370	90
Oth Sts <sup>1</sup>	480	431	90	3,278	3,013	92	3,758	3,444	92
US <sup>2</sup>	6,200	5,991	97	61,018	59,378	97	67,218	65,369	97

<sup>1</sup> Individual State estimates not available for the 33 Other States.

<sup>2</sup> May not add due to rounding.

## U.S. Hog Inventory & Market Hogs March 1

Million Head





**Market Hogs and Pigs: Inventory Number by Weight Group,  
State, and United States, March 1, 2008-2009**

State	Under 60 Lbs.		60-119 Lbs.		120-179 Lbs.		180 Lbs. and Over	
	2008	2009	2008	2009	2008	2009	2008	2009
	<i>1,000 Head</i>	<i>1,000 Head</i>	<i>1,000 Head</i>	<i>1,000 Head</i>	<i>1,000 Head</i>	<i>1,000 Head</i>	<i>1,000 Head</i>	<i>1,000 Head</i>
AR	160	145	15	15	10	15	25	15
CO	320	320	85	75	80	70	140	125
IL	1,440	1,440	900	960	900	770	720	600
IN	1,200	1,230	840	800	680	620	620	580
IA	5,450	5,150	4,680	5,050	4,440	4,690	3,450	3,370
KS	575	575	370	265	295	290	470	525
MI	315	350	220	230	170	160	175	190
MN	2,690	2,620	1,650	1,670	1,460	1,390	1,110	1,040
MO	1,245	1,250	520	470	530	465	425	400
NE	1,080	1,030	760	700	660	610	430	425
NC	3,580	3,400	2,100	1,840	1,890	1,710	1,520	1,470
OH	635	715	410	435	390	390	250	270
OK	960	890	300	340	220	210	470	500
PA	320	350	300	275	230	200	200	195
SD	480	450	285	250	280	245	265	215
TX	330	310	200	200	210	200	245	285
WI	150	145	85	70	60	55	70	55
Oth Sts <sup>1</sup>	1,207	1,088	770	681	688	642	614	602
US <sup>2</sup>	22,137	21,458	14,490	14,326	13,193	12,732	11,199	10,862

<sup>1</sup> Individual State estimates not available for the 33 Other States.

<sup>2</sup> Weight groups may not add to Market Hogs and Pigs due to rounding.

**Hogs and Pigs: Breeding, Market, and Total Inventory  
by State and United States, June 1, 2008-2009**

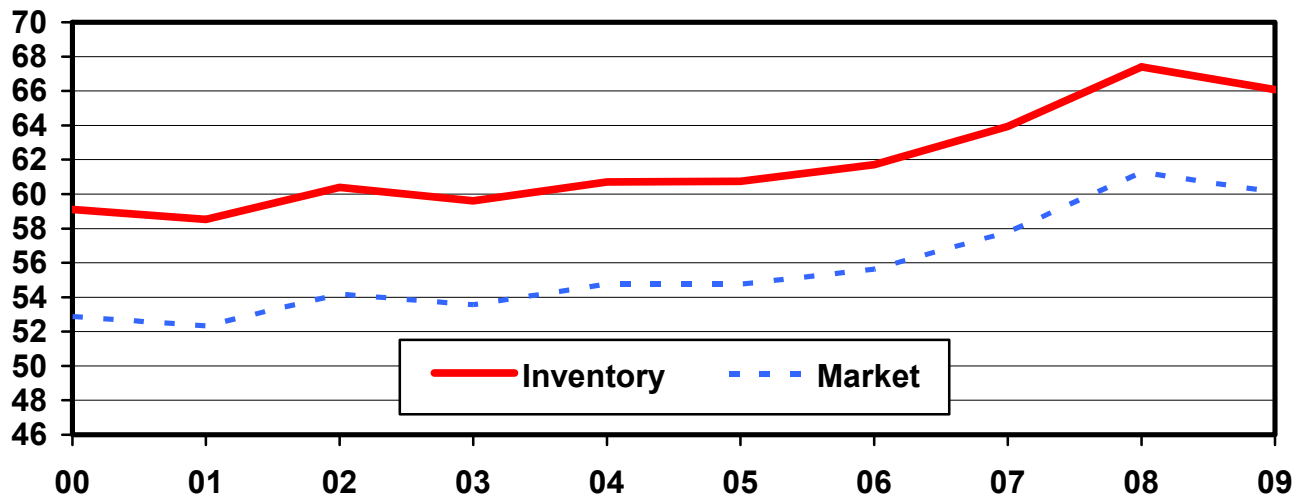
State	Breeding			Market			Total		
	2008	2009		2008	2009		2008	2009	
		Number	as % of 2008		Number	as % of 2008		Number	as % of 2008
	<i>1,000 Head</i>	<i>1,000 Head</i>	<i>Percent</i>	<i>1,000 Head</i>	<i>1,000 Head</i>	<i>Percent</i>	<i>1,000 Head</i>	<i>1,000 Head</i>	<i>Percent</i>
AR	95	85	89	215	200	93	310	285	92
CO	150	150	100	610	590	97	760	740	97
IL	460	480	104	3,890	3,820	98	4,350	4,300	99
IN	290	270	93	3,360	3,230	96	3,650	3,500	96
IA	1,080	1,020	94	18,320	18,580	101	19,400	19,600	101
KS	170	170	100	1,610	1,610	100	1,780	1,780	100
MI	100	110	110	930	940	101	1,030	1,050	102
MN	580	580	100	6,920	6,820	99	7,500	7,400	99
MO	380	345	91	2,720	2,655	98	3,100	3,000	97
NE	380	390	103	3,020	2,860	95	3,400	3,250	96
NC	1,020	990	97	9,080	8,610	95	10,100	9,600	95
OH	165	170	103	1,725	1,830	106	1,890	2,000	106
OK	400	400	100	1,960	1,880	96	2,360	2,280	97
PA	95	90	95	1,085	1,050	97	1,180	1,140	97
SD	150	155	103	1,280	1,125	88	1,430	1,280	90
TX	105	95	90	965	915	95	1,070	1,010	94
WI	45	45	100	345	315	91	390	360	92
Oth Sts <sup>1</sup>	466	422	91	3,234	3,082	95	3,700	3,504	95
US <sup>2</sup>	6,131	5,967	97	61,269	60,112	98	67,400	66,079	98

<sup>1</sup> Individual State estimates not available for the 33 Other States.

<sup>2</sup> May not add due to rounding.

## U.S. Hog Inventory & Market Hogs June 1

Million Head



**Market Hogs and Pigs: Inventory Number by Weight Group,  
State, and United States, June 1, 2008-2009**

State	Under 60 Lbs.		60-119 Lbs.		120-179 Lbs.		180 Lbs. and Over	
	2008	2009	2008	2009	2008	2009	2008	2009
	<i>1,000 Head</i>	<i>1,000 Head</i>	<i>1,000 Head</i>	<i>1,000 Head</i>	<i>1,000 Head</i>	<i>1,000 Head</i>	<i>1,000 Head</i>	<i>1,000 Head</i>
AR	160	155	20	15	15	15	20	15
CO	310	315	115	90	70	70	115	115
IL	1,400	1,360	990	1,030	850	790	650	640
IN	1,180	1,220	900	830	670	620	610	560
IA	5,430	5,380	5,060	5,250	4,450	4,530	3,380	3,420
KS	540	520	330	315	260	285	480	490
MI	325	360	230	240	185	160	190	180
MN	2,660	2,660	1,760	1,760	1,470	1,370	1,030	1,030
MO	1,295	1,295	545	490	475	455	405	415
NE	1,120	1,060	810	750	650	630	440	420
NC	3,700	3,420	2,150	1,920	1,760	1,740	1,470	1,530
OH	630	715	435	450	400	395	260	270
OK	990	860	300	300	220	210	450	510
PA	320	350	320	310	235	205	210	185
SD	480	425	305	260	255	225	240	215
TX	315	295	225	215	205	205	220	200
WI	130	130	90	75	60	60	65	50
Oth Sts <sup>1</sup>	1,212	1,153	736	708	662	619	625	602
US <sup>2</sup>	22,197	21,673	15,321	15,008	12,892	12,584	10,860	10,847

<sup>1</sup> Individual State estimates not available for the 33 Other States.

<sup>2</sup> Weight groups may not add to Market Hogs and Pigs due to rounding.

**Hogs and Pigs: Breeding, Market, and Total Inventory  
by State and United States, September 1, 2007-2008**

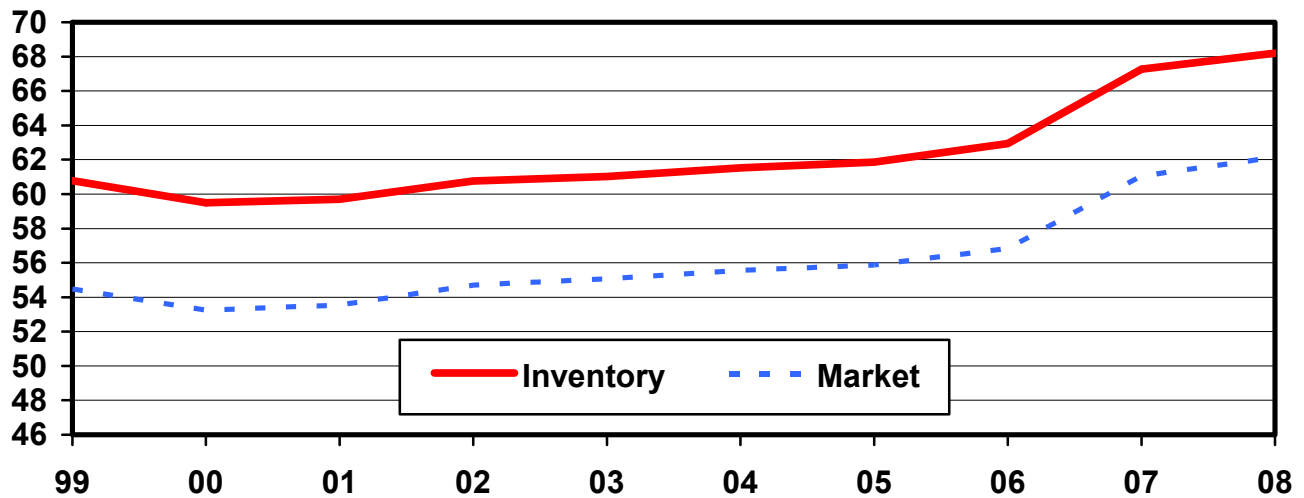
State	Breeding			Market			Total		
	2007	2008		2007	2008		2007	2008	
		Number	as % of 2007		Number	as % of 2007		Number	as % of 2007
	<i>1,000 Head</i>	<i>1,000 Head</i>	<i>Percent</i>	<i>1,000 Head</i>	<i>1,000 Head</i>	<i>Percent</i>	<i>1,000 Head</i>	<i>1,000 Head</i>	<i>Percent</i>
AR	85	95	112	205	220	107	290	315	109
CO	160	150	94	700	600	86	860	750	87
IL	490	470	96	3,710	3,930	106	4,200	4,400	105
IN	300	280	93	3,200	3,320	104	3,500	3,600	103
IA	1,050	1,070	102	17,850	18,730	105	18,900	19,800	105
KS	180	170	94	1,790	1,640	92	1,970	1,810	92
MI	100	100	100	980	950	97	1,080	1,050	97
MN	610	570	93	6,690	7,030	105	7,300	7,600	104
MO	385	375	97	2,765	2,775	100	3,150	3,150	100
NE	370	375	101	2,980	2,925	98	3,350	3,300	99
NC	1,020	1,000	98	9,380	9,300	99	10,400	10,300	99
OH	165	165	100	1,595	1,755	110	1,760	1,920	109
OK	400	400	100	2,050	2,060	100	2,450	2,460	100
PA	100	85	85	1,090	1,035	95	1,190	1,120	94
SD	155	150	97	1,225	1,210	99	1,380	1,360	99
TX	100	105	105	1,020	1,015	100	1,120	1,120	100
WI	50	45	90	370	335	91	420	380	90
Oth Sts <sup>1</sup>	488	456	93	3,466	3,305	95	3,955	3,761	95
US <sup>2</sup>	6,208	6,061	98	61,066	62,135	102	67,275	68,196	101

<sup>1</sup> Individual State estimates not available for the 33 Other States.

<sup>2</sup> May not add due to rounding.

## U.S. Hog Inventory & Market Hogs September 1

Million Head



**Market Hogs and Pigs: Inventory Number by Weight Group,  
State, and United States, September 1, 2007-2008**

State	Under 60 Lbs.		60-119 Lbs.		120-179 Lbs.		180 Lbs. and Over	
	2007	2008	2007	2008	2007	2008	2007	2008
	<i>1,000 Head</i>	<i>1,000 Head</i>	<i>1,000 Head</i>	<i>1,000 Head</i>	<i>1,000 Head</i>	<i>1,000 Head</i>	<i>1,000 Head</i>	<i>1,000 Head</i>
AR	150	170	20	20	15	15	20	15
CO	365	310	120	105	75	70	140	115
IL	1,400	1,420	910	1,010	780	840	620	660
IN	1,120	1,200	840	890	640	620	600	610
IA	5,790	5,620	4,920	5,170	4,040	4,460	3,100	3,480
KS	550	570	380	300	375	275	485	495
MI	335	355	230	240	230	185	185	170
MN	2,680	2,820	1,710	1,820	1,300	1,400	1,000	990
MO	1,300	1,350	545	565	530	495	390	365
NE	1,150	1,090	810	780	590	610	430	445
NC	3,700	3,700	2,310	2,050	1,820	1,860	1,550	1,690
OH	630	655	385	455	350	400	230	245
OK	950	980	340	320	250	240	510	520
PA	350	320	310	305	240	215	190	195
SD	425	455	290	285	270	240	240	230
TX	355	325	215	250	220	205	230	235
WI	150	125	105	90	60	55	55	65
Oth Sts <sup>1</sup>	1,248	1,218	821	742	745	670	652	676
US <sup>2</sup>	22,648	22,683	15,261	15,397	12,530	12,855	10,627	11,201

<sup>1</sup> Individual State estimates not available for the 33 Other States.

<sup>2</sup> Weight groups may not add to Market Hogs and Pigs due to rounding.

**Hogs and Pigs: Breeding, Market, and Total Inventory  
by State and United States, December 1, 2007-2008**

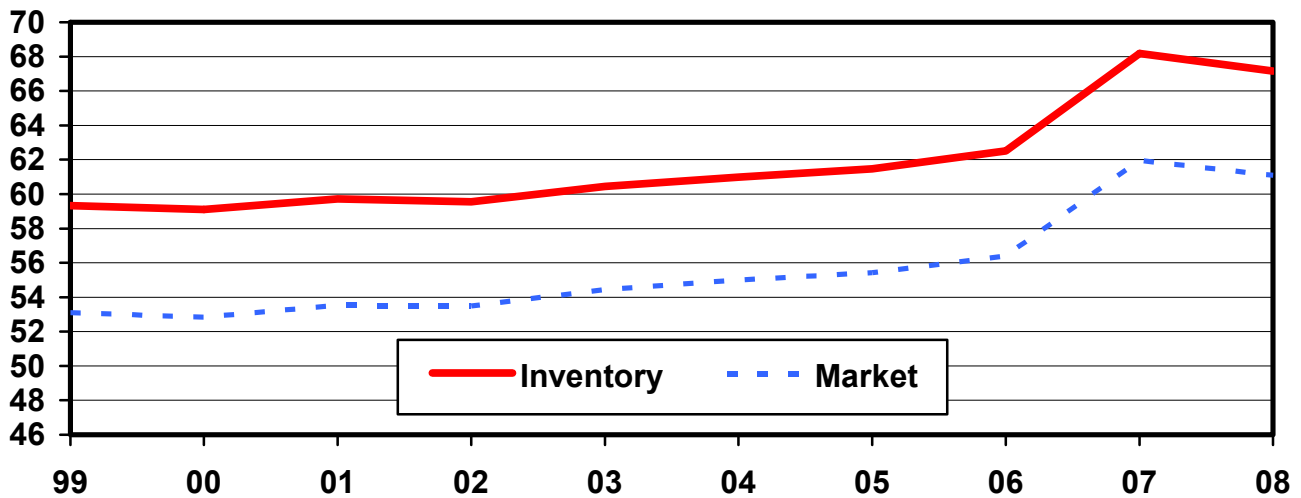
State	Breeding			Market			Total		
	2007	2008		2007	2008		2007	2008	
		Number	as % of 2007		Number	as % of 2007		Number	as % of 2007
	<i>1,000 Head</i>	<i>1,000 Head</i>	<i>Percent</i>	<i>1,000 Head</i>	<i>1,000 Head</i>	<i>Percent</i>	<i>1,000 Head</i>	<i>1,000 Head</i>	<i>Percent</i>
AR	85	90	106	205	190	93	290	280	97
CO	160	150	94	700	580	83	860	730	85
IL	480	490	102	3,870	3,860	100	4,350	4,350	100
IN	320	280	88	3,380	3,270	97	3,700	3,550	96
IA	1,080	1,070	99	18,320	18,830	103	19,400	19,900	103
KS	180	165	92	1,700	1,575	93	1,880	1,740	93
MI	100	110	110	930	920	99	1,030	1,030	100
MN	600	580	97	7,100	6,920	97	7,700	7,500	97
MO	375	370	99	2,775	2,780	100	3,150	3,150	100
NE	365	380	104	2,985	2,970	99	3,350	3,350	100
NC	1,020	980	96	9,180	8,720	95	10,200	9,700	95
OH	160	170	106	1,670	1,770	106	1,830	1,940	106
OK	400	400	100	1,950	2,000	103	2,350	2,400	102
PA	105	90	86	1,065	1,030	97	1,170	1,120	96
SD	165	155	94	1,295	1,125	87	1,460	1,280	88
TX	105	100	95	1,055	1,020	97	1,160	1,120	97
WI	50	40	80	390	320	82	440	360	82
Oth Sts <sup>1</sup>	483	441	91	3,374	3,207	95	3,857	3,648	95
US <sup>2</sup>	6,233	6,061	97	61,944	61,087	99	68,177	67,148	98

<sup>1</sup> Individual State estimates not available for the 33 Other States.

<sup>2</sup> May not add due to rounding.

## U.S. Hog Inventory & Market Hogs December 1

Million Head



**Market Hogs and Pigs: Inventory Number by Weight Group,  
State, and United States, December 1, 2007-2008**

State	Under 60 Lbs.		60-119 Lbs.		120-179 Lbs.		180 Lbs. and Over	
	2007	2008	2007	2008	2007	2008	2007	2008
	<i>1,000 Head</i>	<i>1,000 Head</i>	<i>1,000 Head</i>	<i>1,000 Head</i>	<i>1,000 Head</i>	<i>1,000 Head</i>	<i>1,000 Head</i>	<i>1,000 Head</i>
AR	150	145	20	15	15	15	20	15
CO	360	315	90	70	90	70	160	125
IL	1,420	1,420	980	990	800	800	670	650
IN	1,260	1,220	850	830	680	610	590	610
IA	5,810	5,290	4,880	5,320	4,060	4,500	3,570	3,720
KS	580	530	365	305	295	245	460	495
MI	315	320	235	240	200	175	180	185
MN	2,750	2,710	1,730	1,760	1,450	1,360	1,170	1,090
MO	1,300	1,340	570	560	485	490	420	390
NE	1,140	1,130	805	760	590	630	450	450
NC	3,430	3,380	2,220	1,930	1,890	1,770	1,640	1,640
OH	650	670	405	445	360	400	255	255
OK	910	930	300	320	220	260	520	490
PA	345	320	300	300	220	215	200	195
SD	465	435	285	225	295	240	250	225
TX	315	320	230	200	230	205	280	295
WI	150	120	100	85	70	55	70	60
Oth Sts <sup>1</sup>	1,195	1,132	808	741	708	691	664	643
US <sup>2</sup>	22,545	21,727	15,173	15,096	12,658	12,731	11,569	11,533

<sup>1</sup> Individual State estimates not available for the 33 Other States.

<sup>2</sup> Weight groups may not add to Market Hogs and Pigs due to rounding.

**Farrowings: Number of Sows, Pigs per Litter, and Pig Crop  
by State and United States, December-February 2008-2009**

State	Sows Farrowing <sup>1</sup>			Pigs per Litter <sup>1</sup>		Pig Crop <sup>1 2</sup>		
	2008	2009		2008	2009	2008	2009	
		Number	as % of 2008				Number	as % of 2008
	<i>1,000 Head</i>	<i>1,000 Head</i>	<i>Percent</i>	<i>Number</i>	<i>Number</i>	<i>1,000 Head</i>	<i>1,000 Head</i>	<i>Percent</i>
AR	44	44	100	9.60	9.85	422	433	103
CO	84	74	88	9.05	8.60	760	636	84
IL	240	250	104	9.25	9.50	2,220	2,375	107
IN	150	140	93	9.00	9.30	1,350	1,302	96
IA	510	490	96	9.20	9.60	4,692	4,704	100
KS	86	80	93	9.10	9.10	783	728	93
MI	52	53	102	9.45	9.70	491	514	105
MN	285	280	98	9.25	9.75	2,636	2,730	104
MO	190	190	100	9.20	9.35	1,748	1,777	102
NE	190	180	95	9.50	9.75	1,805	1,755	97
NC	550	520	95	9.20	9.55	5,060	4,966	98
OH	89	86	97	9.15	9.40	814	808	99
OK	180	190	106	9.35	8.90	1,683	1,691	100
PA	43	40	93	9.50	9.75	409	390	95
SD	88	82	93	9.60	9.85	845	808	96
TX	54	45	83	9.00	9.65	486	434	89
WI	26	24	92	8.95	8.80	233	211	91
Oth Sts <sup>3</sup>	210	210	100	9.29	9.37	1,950	1,968	101
US <sup>4</sup>	3,071	2,978	97	9.24	9.48	28,387	28,230	99

<sup>1</sup> December preceding year.

<sup>2</sup> Number of pigs born December-February that were still on hand March 1, or had been sold.

<sup>3</sup> Individual State estimates not available for the 33 Other States.

<sup>4</sup> May not add due to rounding.



**Farrowings: Number of Sows, Pigs per Litter, and Pig Crop  
by State and United States, March-May 2008-2009**

State	Sows Farrowing			Pigs per Litter		Pig Crop <sup>1</sup>		
	2008	2009		2008	2009	2008	2009	
		Number	as % of 2008				Number	as % of 2008
	<i>1,000 Head</i>	<i>1,000 Head</i>	<i>Percent</i>	<i>Number</i>	<i>Number</i>	<i>1,000 Head</i>	<i>1,000 Head</i>	<i>Percent</i>
AR	45	46	102	9.80	9.25	441	426	97
CO	81	72	89	8.85	9.00	717	648	90
IL	230	245	107	9.35	9.50	2,151	2,328	108
IN	145	135	93	9.10	9.40	1,320	1,269	96
IA	520	485	93	9.35	9.65	4,862	4,680	96
KS	80	80	100	9.10	9.40	728	752	103
MI	53	53	100	9.70	9.65	514	511	99
MN	285	280	98	9.50	9.95	2,708	2,786	103
MO	190	185	97	9.40	9.80	1,786	1,813	102
NE	185	185	100	9.60	9.90	1,776	1,832	103
NC	550	530	96	9.35	9.70	5,143	5,141	100
OH	89	86	97	9.40	9.50	837	817	98
OK	185	180	97	9.45	9.00	1,748	1,620	93
PA	41	42	102	9.45	9.75	387	410	106
SD	85	86	101	9.70	10.10	825	869	105
TX	51	47	92	8.60	9.70	439	456	104
WI	26	23	88	9.10	9.10	237	209	88
Oth Sts <sup>2</sup>	211	211	100	9.54	9.41	2,011	1,980	98
US <sup>3</sup>	3,052	2,971	97	9.38	9.61	28,630	28,547	100

<sup>1</sup> Number of pigs born March-May that were still on hand June 1, or had been sold.

<sup>2</sup> Individual State estimates not available for the 33 Other States.

<sup>3</sup> May not add due to rounding.

**Farrowings: Number of Sows, Pigs per Litter, and Pig Crop  
by State and United States, June-August 2007-2009**

State	Sows Farrowing				Pigs per Litter		Pig Crop <sup>1</sup>		
	2007	2008	2009 <sup>2</sup>		2007	2008	2007	2008	
			Number	as % of 2008				Number	as % of 2007
	<i>1,000 Head</i>	<i>1,000 Head</i>	<i>1,000 Head</i>	<i>Percent</i>	<i>Number</i>	<i>Number</i>	<i>1,000 Head</i>	<i>1,000 Head</i>	<i>Percent</i>
AR	46	50	43	86	9.70	9.70	446	485	109
CO	83	76	75	99	9.15	8.90	759	676	89
IL	245	240	245	102	9.15	9.45	2,242	2,268	101
IN	150	145	135	93	9.10	9.25	1,365	1,341	98
IA	480	510	480	94	9.30	9.40	4,464	4,794	107
KS	90	81	84	104	9.00	9.15	810	741	91
MI	55	53	54	102	9.20	9.25	506	490	97
MN	295	285	285	100	9.50	9.80	2,803	2,793	100
MO	195	195	185	95	9.30	9.70	1,814	1,892	104
NE	200	185	185	100	9.50	9.70	1,900	1,795	94
NC	580	560	530	95	9.10	9.65	5,278	5,404	102
OH	86	89	86	97	9.40	9.50	808	846	105
OK	195	195	185	95	9.35	9.35	1,823	1,823	100
PA	48	38	42	111	9.60	9.60	461	365	79
SD	83	82	82	100	9.60	9.80	797	804	101
TX	58	52	49	94	9.05	8.55	525	445	85
WI	26	24	23	96	8.90	9.10	231	218	94
Oth Sts <sup>3</sup>	218	215	206	96	9.49	9.58	2,063	2,060	100
US <sup>4</sup>	3,133	3,075	2,974	97	9.29	9.51	29,095	29,240	100

<sup>1</sup> Number of pigs born June-August that were still on hand September 1, or had been sold.

<sup>2</sup> Intentions.

<sup>3</sup> Individual State estimates not available for the 33 Other States.

<sup>4</sup> May not add due to rounding.

**Farrowings: Number of Sows, Pigs per Litter, and Pig Crop  
by State and United States, September-November 2007-2009**

State	Sows Farrowing				Pigs Per Litter		Pig Crop <sup>1</sup>		
	2007	2008	2009 <sup>2</sup>		2007	2008	2007	2008	
			Number	as % of 2008				Number	as % of 2007
	<i>1,000 Head</i>	<i>1,000 Head</i>	<i>1,000 Head</i>	<i>Percent</i>	<i>Number</i>	<i>Number</i>	<i>1,000 Head</i>	<i>1,000 Head</i>	<i>Percent</i>
AR	44	46	43	93	9.80	9.80	431	451	105
CO	83	71	74	104	9.05	8.80	751	625	83
IL	245	255	245	96	9.25	9.40	2,266	2,397	106
IN	155	140	135	96	9.00	9.20	1,395	1,288	92
IA	540	510	480	94	9.30	9.50	5,022	4,845	96
KS	89	76	84	111	9.15	9.40	814	714	88
MI	53	53	54	102	9.45	9.65	501	511	102
MN	295	285	285	100	9.30	9.85	2,744	2,807	102
MO	195	200	185	93	9.30	9.65	1,814	1,930	106
NE	195	185	185	100	9.55	9.80	1,862	1,813	97
NC	570	520	530	102	9.20	9.55	5,244	4,966	95
OH	86	89	84	94	9.45	9.00	813	801	99
OK	190	185	185	100	9.20	9.20	1,748	1,702	97
PA	51	40	41	103	9.10	9.35	464	374	81
SD	90	84	80	95	9.55	9.80	860	823	96
TX	58	50	46	92	9.35	9.55	542	478	88
WI	26	23	22	96	8.90	8.95	231	206	89
Oth Sts <sup>3</sup>	215	216	204	94	9.37	9.44	2,011	2,039	101
US <sup>4</sup>	3,180	3,028	2,962	98	9.28	9.50	29,513	28,770	97

<sup>1</sup> Number of pigs born September-November that were still on hand December 1, or had been sold.

<sup>2</sup> Intentions.

<sup>3</sup> Individual State estimates not available for the 33 Other States.

<sup>4</sup> May not add due to rounding.

**Monthly Farrowings: Number of Sows, Pigs per Litter, and Pig Crop,  
United States, December-November 2008-2009**

Month	Sows Farrowing <sup>1</sup>		Pigs per Litter		Pig Crop <sup>1</sup>	
	2008	2009	2008	2009	2008	2009
	<i>1,000 Head</i>	<i>1,000 Head</i>	<i>Number</i>	<i>Number</i>	<i>1,000 Head</i>	<i>1,000 Head</i>
Dec <sup>2</sup>	1,017	987	9.22	9.50	9,381	9,380
Jan	1,028	1,003	9.24	9.45	9,501	9,478
Feb	1,026	988	9.26	9.49	9,505	9,372
Mar	1,049	997	9.35	9.56	9,811	9,530
Apr	998	986	9.38	9.61	9,370	9,474
May	1,004	988	9.41	9.66	9,449	9,543
Jun	1,046		9.48		9,917	
Jul	1,020		9.52		9,712	
Aug	1,009		9.53		9,611	
Sep	1,047		9.50		9,950	
Oct	1,005		9.48		9,528	
Nov	976		9.52		9,292	
Total	12,225		9.41		115,027	

<sup>1</sup> Monthly values may not add to quarterly or annual totals due to rounding.

<sup>2</sup> December preceding year.

## Reliability of June 1 Hogs and Pigs Estimates

**Survey Procedures:** A random sample of roughly 9,200 U.S. producers was surveyed to provide data for these estimates. Survey procedures ensured that all hog and pig producers, regardless of size, had a chance to be included in the survey. Large producers were sampled more heavily than small operations. During the first half of June 2009, data were collected from about 7,600 operations, 83 percent of the total sample. The data collected were received by electronic data reporting (EDR), mail, telephone, and face-to-face personal interviews. Regardless of when operations responded, they were asked to report inventories as of June 1, 2009.

**Estimation Procedures:** Hogs and pigs estimates were prepared by the Agricultural Statistics Board after reviewing recommendations and analysis submitted by each field office. National and State survey data were reviewed for reasonableness with each other and with estimates from past years using a balance sheet. The balance sheet begins with the previous inventory estimate, adds the estimates of births and imports, and subtracts the estimates of slaughter, exports, and deaths. This indicated ending inventory level is compared to the Agricultural Statistics Board estimate for reasonableness.

**Revision Policy:** Revisions to previous estimates are made to improve quarter to quarter relationships. Estimates for the previous four quarters are subject to revision when current estimates are made. In December, estimates for all quarters of the current and previous year are reviewed. The reviews are primarily based on hog check-off receipts and slaughter. Estimates will also be reviewed after data from the Department of Agriculture five-year Census of Agriculture are available. No revisions will be made after that date.

**Reliability:** Since all operations raising hogs are not included in the sample, survey estimates are subject to sampling variability. Survey results are also subject to non-sampling errors such as omissions, duplication, and mistakes in reporting, recording, and processing the data. The affects of these errors cannot be measured directly. They are minimized through rigid quality controls in the data collection process and through a careful review of all reported data for consistency and reasonableness.

To assist users in evaluating the reliability of the estimates in this report, the "**Root Mean Square Error**" is shown for selected items in the following table. The "Root Mean Square Error" is a statistical measure based on past performance and is computed using the difference between first and final estimates. The "Root Mean Square Error" for hog inventory estimates over the past 20 quarters is 1.6 percent. This means that chances are 2 out of 3 that the final estimate will not be above or below the current estimate of 66.1 million head by more than 1.6 percent. Chances are 9 out of 10 that the difference will not exceed 2.7 percent.

**Reliability of June 1 Hog Estimates**

Item	Root Mean Square Error	90% Confidence Level		Difference Between First and Latest Estimates			Quarters	
				Average	Smallest	Largest	First Above Latest	First Below Latest
				<i>1,000 Head</i>	<i>1,000 Head</i>	<i>1,000 Head</i>	<i>Number</i>	<i>Number</i>
All Hogs & Pigs	1.6	2.7	1,784	694	20	3,067	5	15
Pig Crop	2.0	3.4	971	359	0	1,644	4	15
Expected Farrowings								
Next Quarter	2.3	4.0	119	44	3	216	3	17
Following Quarter	2.6	4.6	136	54	3	220	5	15

**Information Contacts**

Listed below are the commodity specialists in the Livestock Branch of the National Agricultural Statistics Service to contact for additional information.

Dan Kerestes, Chief, Livestock Branch ..... (202) 720-3570

Livestock Section

Scott Hollis, Head, Livestock Section ..... (202) 690-2424  
 Jim Collom - Dairy Products ..... (202) 690-3236  
 Joe Gaynor - Dairy Products Prices ..... (202) 690-2168  
 Jason Hardegree - Cattle, Cattle on Feed ..... (202) 720-3040  
 Sherry Bertramsen - Livestock Slaughter ..... (515) 284-4340  
 Everett Olbert - Sheep and Goats ..... (202) 720-4751  
 Mike Miller - Milk Production and Milk Cows ..... (202) 720-3278  
 Nick Streff - Hogs and Pigs ..... (202) 720-3106

## ACCESS TO REPORTS!!

---

For your convenience, there are several ways to obtain NASS reports, data products, and services:

### INTERNET ACCESS

All NASS reports are available free of charge. For free access, connect to the Internet and go to the NASS Home Page at: **[www.nass.usda.gov](http://www.nass.usda.gov)**.

### E-MAIL SUBSCRIPTION

All NASS reports are available by subscription free of charge direct to your e-mail address. Starting with the NASS Home Page at **[www.nass.usda.gov](http://www.nass.usda.gov)**, under the right navigation, *Receive reports by Email*, click on **National** or **State**. Follow the instructions on the screen.

-----

### PRINTED REPORTS OR DATA PRODUCTS

**CALL OUR TOLL-FREE ORDER DESK: 800-999-6779 (U.S. and Canada)**  
**Other areas, please call 703-605-6220      FAX: 703-605-6900**  
**(Visa, MasterCard, check, or money order acceptable for payment.)**

-----

### ASSISTANCE

For **assistance** with general agricultural statistics or further information about NASS or its products or services, contact the **Agricultural Statistics Hotline** at **800-727-9540**, 7:30 a.m. to 4:00 p.m. ET, or e-mail: **[nass@nass.usda.gov](mailto:nass@nass.usda.gov)**.

The U.S. Department of Agriculture (USDA) prohibits discrimination in all its programs and activities on the basis of race, color, national origin, age, disability, and where applicable, sex, marital status, familial status, parental status, religion, sexual orientation, genetic information, political beliefs, reprisal, or because all or a part of an individual's income is derived from any public assistance program. (Not all prohibited bases apply to all programs.) Persons with disabilities who require alternative means for communication of program information (Braille, large print, audiotape, etc.) should contact USDA's TARGET Center at (202) 720-2600 (voice and TDD).

To file a complaint of discrimination, write to USDA, Director, Office of Civil Rights, 1400 Independence Avenue, S.W., Washington, D.C. 20250-9410, or call (800) 795-3272 (voice) or (202) 720-6382 (TDD). USDA is an equal opportunity provider and employer.