

Quarterly Hogs and Pigs

Released December 30, 2009, by the National Agricultural Statistics Service (NASS), Agricultural Statistics Board, U.S. Department of Agriculture. For information on *Quarterly Hogs and Pigs* call Nick Streff at 202-720-3106, office hours 7:30 a.m. to 4:00 p.m. ET.

U.S. Hog Inventory down 2 Percent

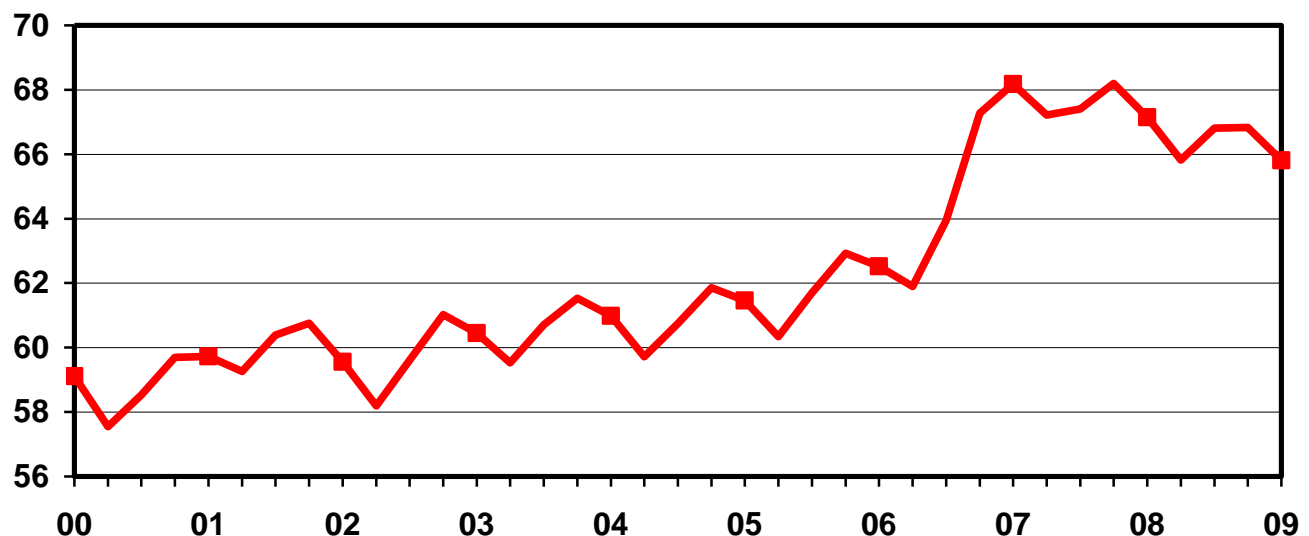
U.S. inventory of all hogs and pigs on December 1, 2009 was 65.8 million head. This was down 2 percent from December 1, 2008 and down 2 percent from September 1, 2009.

Breeding inventory, at 5.85 million head, was down 3 percent from last year and down slightly from the previous quarter. **Market hog inventory**, at 60.0 million head, was down 2 percent from last year and down 2 percent from last quarter.

The September-November 2009 pig crop, at 28.8 million head, was up slightly from 2008 but down 2 percent from 2007. Sows farrowing during this period totaled 2.97 million head, down 2 percent from 2008 and down 6 percent from 2007. The sows farrowed during this quarter represented 51 percent of the breeding herd. The average pigs saved per litter was 9.70 for the September-November 2009 period, compared to 9.50 last year. The litter rate equaled the record for pigs saved per litter set during the June-August 2009 period. Pigs saved per litter by size of operation ranged from 7.40 for operations with 1-99 hogs and pigs to 9.80 for operations with more than 5,000 hogs and pigs.

U.S. Quarterly Hogs and Pigs Inventory December 1

Million Head



U.S. hog producers intend to have 2.95 million sows farrow during the December 2009-February 2010 quarter, down 2 percent from the actual farrowings during the same period in 2009 and down 4 percent from 2008. Intended farrowings for March-May 2010, at 2.94 million sows, are down 3 percent from 2009 and down 4 percent from 2008.

The total number of hogs under contract owned by operations with over 5,000 head, but raised by contractees, accounted for 44 percent of the total U.S. hog inventory, up from 43 percent last year.

Revisions

All inventory and pig crop estimates for March 2008 through September 2009 were reviewed using slaughter, death loss and current import and export data. Based on this review, adjustments of less than one half of one percent were made to the December-February 2009 pig crop and September 2009 total inventory. An adjustment of less than one percent was made to the June 2009 total inventory while an adjustment of less than two percent was made to the March-May 2009 pig crop.

Special Note

The market hogs and pigs weight groups have changed. The market weight group under 60 pounds has been changed to under 50 pounds. The market weight group 60-119 pounds has been changed to 50-119 pounds. The 120-179 pounds and 180 pounds and over weight groups remain the same. The changes align NASS market hogs and pigs weight groups more closely with international trade data and allow for a more uniform analysis of the North American hog inventory.

Estimates have been made for these new weight groups dating back to March of 2008 at the U.S. and State level using slaughter data and current import and export data.

The quarterly estimating States will now include Utah but will exclude Arkansas and Wisconsin. This change was due to increased production in Utah and decreased production in Arkansas and Wisconsin. Data from March 2008 forward will reflect this change to provide the user with comparable data for 2008 and 2009.

This report was approved on December 30, 2009.



Acting Secretary of
Agriculture
Michael T. Scuse



Agricultural Statistics Board
Acting Chairperson
Joseph J. Prusacki

Contents

	Page
Quarterly U.S. Inventory by Class and Weight Group, 2008-2009	1
Quarterly U.S. Sows Farrowed, Pig Crop, and Pigs per Litter, 2008-2010	2
Quarterly U.S. Pigs per Litter by Size of Operations, 2008-2009.....	2
Hogs and Pigs: Inventory by State and U.S., 2008-2009	
December 1	5
March 1	7
June 1	9
September 1	11
Farrowings: Number of Sows, Pigs per Litter, Pig Crop by State and U.S., 2008-2010	
December-November	13
December-February	14
March-May	15
June-August	16
September-November	17
Monthly U.S. Farrowings, December-November 2008-2009	18
Reliability Statement	19
Information Contacts	20

**Hogs and Pigs: Inventory Number by Class, Weight Group,
and Quarter, United States, 2008-2009**

Item	2008	2009	2009 as a % 2008
	<i>1,000 Head</i>	<i>1,000 Head</i>	<i>Percent</i>
March 1 Inventory ¹			
All Hogs and Pigs	67,218	65,819	98
Kept for Breeding	6,200	5,992	97
Market	61,018	59,828	98
Market Hogs and Pigs by Weight Groups			
Under 50 Pounds	20,277	19,809	98
50-119 Pounds	16,350	16,426	100
120-179 Pounds	13,193	12,732	97
180 Pounds and Over	11,199	10,862	97
June 1 Inventory ¹			
All Hogs and Pigs	67,400	66,809	99
Kept for Breeding	6,131	5,968	97
Market	61,269	60,842	99
Market Hogs and Pigs by Weight Groups			
Under 50 Pounds	19,807	19,554	99
50-119 Pounds	17,711	17,838	101
120-179 Pounds	12,892	12,604	98
180 Pounds and Over	10,860	10,847	100
September 1 Inventory ¹			
All Hogs and Pigs	68,196	66,826	98
Kept for Breeding	6,061	5,875	97
Market	62,135	60,952	98
Market Hogs and Pigs by Weight Groups			
Under 50 Pounds	20,643	19,838	96
50-119 Pounds	17,437	17,178	99
120-179 Pounds	12,855	12,684	99
180 Pounds and Over	11,201	11,253	100
December 1 Inventory ¹			
All Hogs and Pigs	67,148	65,807	98
Kept for Breeding	6,062	5,850	97
Market	61,087	59,957	98
Market Hogs and Pigs by Weight Groups			
Under 50 Pounds	19,428	19,085	98
50-119 Pounds	17,396	17,062	98
120-179 Pounds	12,731	12,529	98
180 Pounds and Over	11,533	11,282	98

¹ May not add due to rounding.

**Farrowings: Number of Sows, Pig Crop, and Pigs per Litter,
United States, 2008-2010**

Item	2008	2009	2010	2009 as % of 2008	2010 as % of 2009
	<i>1,000 Head</i>	<i>1,000 Head</i>	<i>1,000 Head</i>	<i>Percent</i>	<i>Percent</i>
Sows Farrowing					
Dec-Feb ^{1 2}	3,071	3,011	2,954	98	98
Mar-May ²	3,052	3,018	2,935	99	97
Dec-May ^{1 3}	6,123	6,029	5,890	98	98
Jun-Aug	3,075	2,965		96	
Sep-Nov	3,028	2,974		98	
Jun-Nov ³	6,103	5,939		97	
Pig Crop					
Dec-Feb ¹	28,388	28,552		101	
Mar-May	28,631	29,012		101	
Dec-May ^{1 3}	57,019	57,564		101	
Jun-Aug	29,240	28,777		98	
Sep-Nov	28,771	28,833		100	
Jun-Nov ³	58,011	57,610		99	
	<i>Number</i>	<i>Number</i>	<i>Number</i>	<i>Percent</i>	<i>Percent</i>
Pigs per Litter					
Dec-Feb ¹	9.24	9.48		103	
Mar-May	9.38	9.61		102	
Dec-May ¹	9.31	9.55		103	
Jun-Aug	9.51	9.70		102	
Sep-Nov	9.50	9.70		102	
Jun-Nov	9.51	9.70		102	

¹ December preceding year.

² Intentions for 2010.

³ May not add due to rounding.

Pigs per Litter: By Size of Operation, United States, 2008-2009

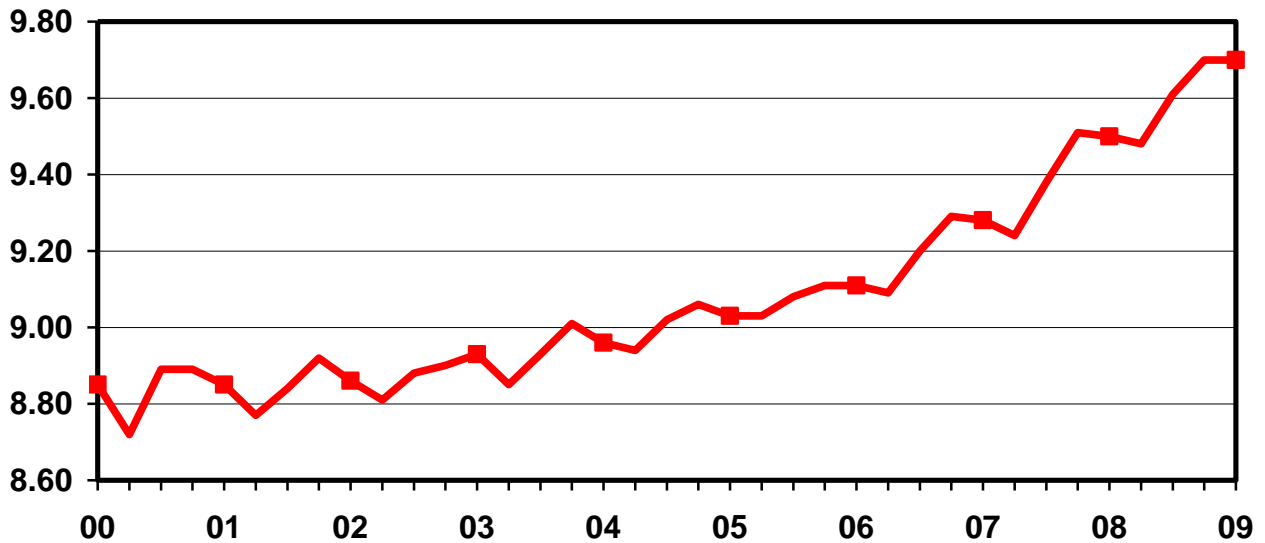
Pig Crop	Pigs per Litter on Operations Having ¹					
	1-99 Head	100-499 Head	500-999 Head	1,000-1,999 Head	2,000-4,999 Head	5,000+ Head
	<i>Number</i>	<i>Number</i>	<i>Number</i>	<i>Number</i>	<i>Number</i>	<i>Number</i>
2008						
Dec-Feb ²	7.50	8.20	8.40	8.80	9.20	9.30
Mar-May	7.70	8.20	8.40	9.00	9.40	9.40
Jun-Aug	7.80	8.30	8.40	9.00	9.50	9.60
Sep-Nov	7.50	8.20	8.30	9.00	9.40	9.60
2009						
Dec-Feb ²	7.30	8.10	8.40	9.00	9.40	9.50
Mar-May	7.40	8.10	8.50	9.10	9.60	9.70
Jun-Aug	7.40	8.20	8.60	9.10	9.60	9.80
Sep-Nov	7.40	8.10	8.50	9.20	9.60	9.80

¹ Pigs per litter rounded to the nearest tenth.

² December preceding year.

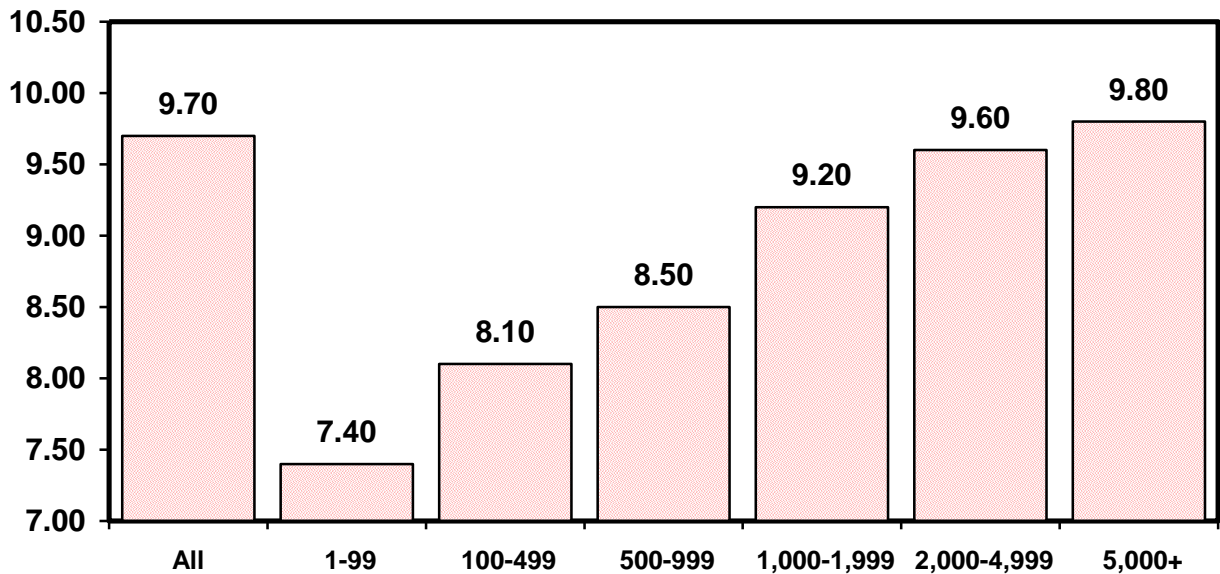
U.S. Quarterly Litter Rate September-November

Number Head



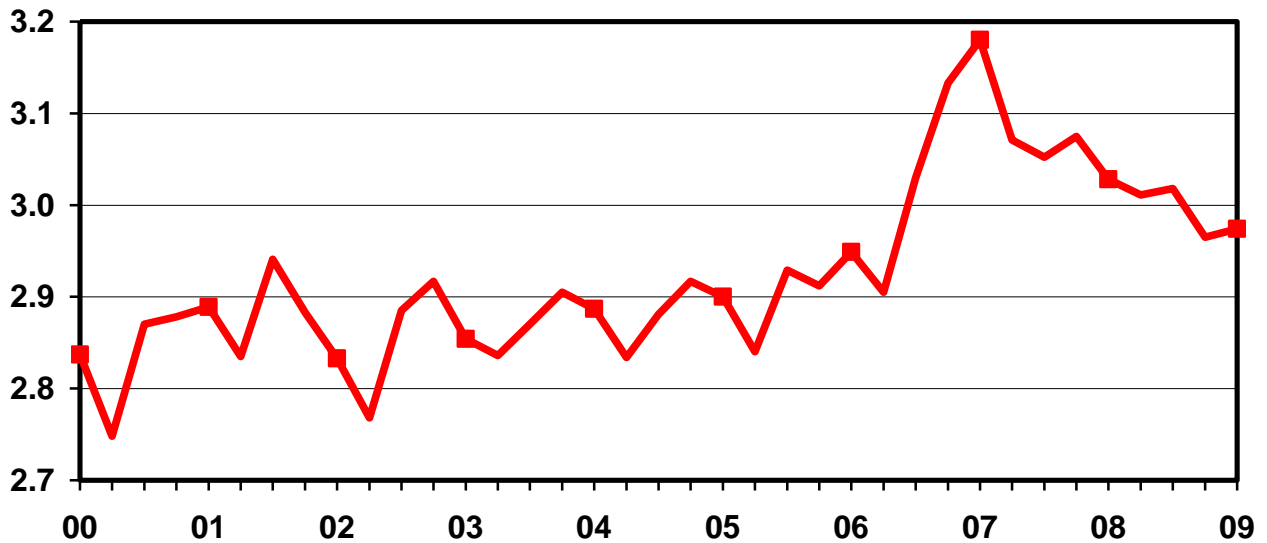
U.S. Pigs per Litter By Size of Operation, September-November 2009

Number Head



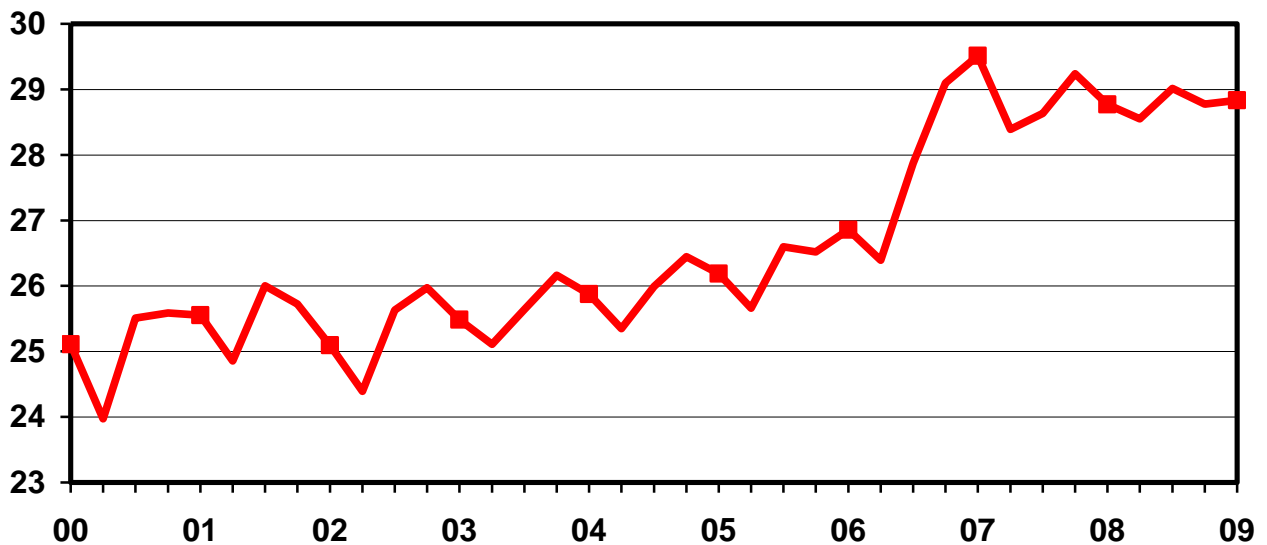
U.S. Quarterly Sows Farrowed September-November

Million Head



U.S. Quarterly Pig Crop September-November

Million Head



**Hogs and Pigs: Breeding, Market, and Total Inventory
by State and United States, December 1, 2008-2009**

State	Breeding			Market			Total		
	2008	2009		2008	2009		2008	2009	
		Number	as % of 2008		Number	as % of 2008		Number	as % of 2008
	<i>1,000 Head</i>	<i>1,000 Head</i>	<i>Percent</i>	<i>1,000 Head</i>	<i>1,000 Head</i>	<i>Percent</i>	<i>1,000 Head</i>	<i>1,000 Head</i>	<i>Percent</i>
AL	17	16	94	158	124	78	175	140	80
AK	0.2	0.3	150	0.7	1.1	157	0.9	1.4	156
AZ	17	20	118	148	147	99	165	167	101
AR	90	65	72	190	135	71	280	200	71
CA	10	7	70	70	93	133	80	100	125
CO	150	150	100	580	570	98	730	720	99
CT	0.6	0.6	100	2.5	2.3	92	3.1	2.9	94
DE	2.5	2.0	80	6.5	5.5	85	9.0	7.5	83
FL	5.0	5.0	100	15.0	15.0	100	20.0	20.0	100
GA	37	32	86	198	178	90	235	210	89
HI	2.8	2.9	104	10.2	10.1	99	13.0	13.0	100
ID	6.0	7.0	117	27.0	29.0	107	33.0	36.0	109
IL	490	480	98	3,860	3,870	100	4,350	4,350	100
IN	280	280	100	3,270	3,370	103	3,550	3,650	103
IA	1,070	1,020	95	18,830	18,280	97	19,900	19,300	97
KS	165	180	109	1,575	1,630	103	1,740	1,810	104
KY	40	35	88	315	315	100	355	350	99
LA	2.0	2.0	100	9.0	8.0	89	11.0	10.0	91
ME	1.0	1.1	110	3.4	3.8	112	4.4	4.9	111
MD	4.0	4.0	100	27.0	26.0	96	31.0	30.0	97
MA	1.5	1.0	67	8.5	10.0	118	10.0	11.0	110
MI	110	110	100	920	970	105	1,030	1,080	105
MN	580	560	97	6,920	6,840	99	7,500	7,400	99
MS	36	35	97	339	330	97	375	365	97
MO	370	360	97	2,780	2,740	99	3,150	3,100	98
MT	22	23	105	153	152	99	175	175	100
NE	380	370	97	2,970	2,780	94	3,350	3,150	94
NV	0.5	0.6	120	3.0	2.3	77	3.5	2.9	83
NH	0.5	0.4	80	2.3	2.0	87	2.8	2.4	86
NJ	1.0	1.0	100	7.0	7.0	100	8.0	8.0	100
NM	0.5	0.4	80	1.5	1.1	73	2.0	1.5	75
NY	13.0	11.0	85	82.0	66.0	80	95.0	77.0	81
NC	980	930	95	8,720	8,770	101	9,700	9,700	100
ND	39	38	97	112	122	109	151	160	106
OH	170	165	97	1,770	1,855	105	1,940	2,020	104
OK	400	410	103	2,000	1,900	95	2,400	2,310	96
OR	4.0	3.0	75	16.0	14.0	88	20.0	17.0	85
PA	90	100	111	1,030	1,080	105	1,120	1,180	105
RI	0.5	0.4	80	1.3	1.3	100	1.8	1.7	94
SC	18	14	78	227	211	93	245	225	92
SD	155	145	94	1,125	1,025	91	1,280	1,170	91
TN	20	17	85	185	168	91	205	185	90
TX	100	60	60	1,020	710	70	1,120	770	69
UT	75	75	100	665	655	98	740	730	99
VT	0.6	0.6	100	2.2	2.4	109	2.8	3.0	107
VA	30	25	83	325	340	105	355	365	103
WA	4.0	5.0	125	21.0	18.0	86	25.0	23.0	92
WV	1.5	1.5	100	5.5	3.5	64	7.0	5.0	71
WI	40	50	125	320	310	97	360	360	100
WY	29	28	97	60	59	98	89	87	98
US ¹	6,062	5,850	97	61,087	59,957	98	67,148	65,807	98

¹ May not add due to rounding.

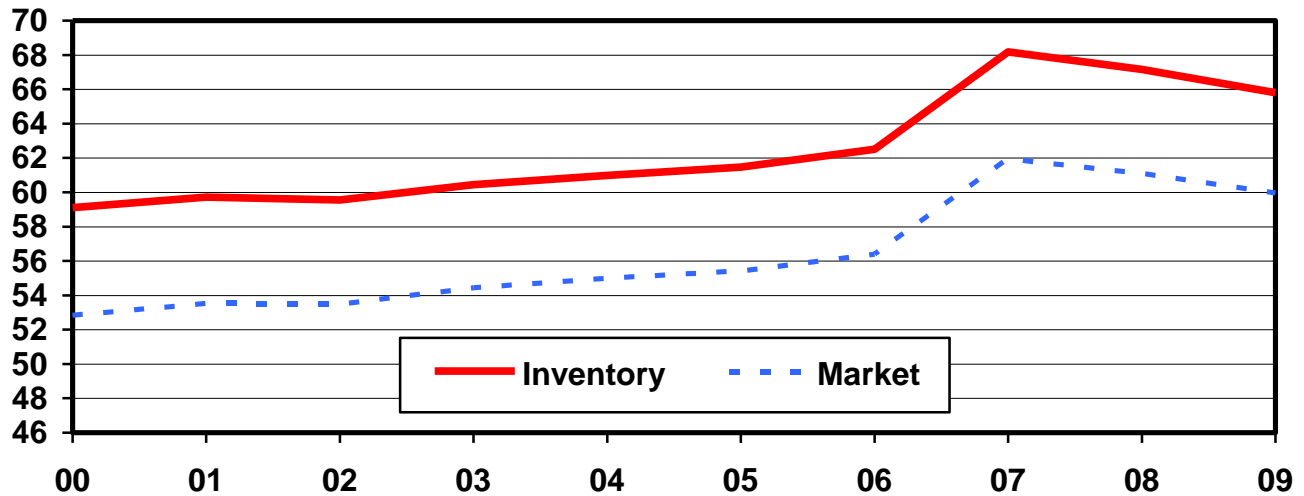
**Market Hogs and Pigs: Inventory Number by Weight Group,
State, and United States, December 1, 2008-2009**

State	Under 50 Lbs.		50-119 Lbs.		120-179 Lbs.		180 Lbs. and Over	
	2008	2009	2008	2009	2008	2009	2008	2009
	<i>1,000 Head</i>	<i>1,000 Head</i>	<i>1,000 Head</i>	<i>1,000 Head</i>	<i>1,000 Head</i>	<i>1,000 Head</i>	<i>1,000 Head</i>	<i>1,000 Head</i>
AL	63	57	44	23	23	23	28	21
AK	0.2	0.3	0.2	0.3	0.2	0.3	0.1	0.2
AZ	50	54	37	31	31	31	30	31
AR	130	85	30	25	15	10	15	15
CA	23	26	17	18	20	19	10	30
CO	285	270	100	115	70	55	125	130
CT	1.1	1.1	0.8	0.6	0.3	0.3	0.3	0.3
DE	2.5	2.5	1.5	1.0	1.5	1.0	1.0	1.0
FL	6.0	6.0	6.0	5.0	2.0	3.0	1.0	1.0
GA	74	74	50	43	40	30	34	31
HI	3.8	3.9	3.3	3.2	1.9	1.7	1.2	1.3
ID	11.0	12.0	8.0	8.0	6.0	7.0	2.0	2.0
IL	1,270	1,230	1,140	1,190	800	760	650	690
IN	1,090	1,100	960	1,000	610	640	610	630
IA	4,730	4,530	5,880	5,800	4,500	4,530	3,720	3,420
KS	475	480	360	335	245	305	495	510
KY	85	85	90	85	70	70	70	75
LA	3.0	3.0	2.0	2.0	2.0	2.0	2.0	1.0
ME	1.2	1.7	1.3	1.3	0.2	0.5	0.7	0.3
MD	8.0	7.0	7.0	6.0	8.0	7.0	4.0	6.0
MA	2.5	3.7	2.4	3.0	1.7	1.7	1.9	1.6
MI	290	335	270	270	175	165	185	200
MN	2,420	2,410	2,050	2,080	1,360	1,300	1,090	1,050
MS	117	120	94	80	64	65	64	65
MO	1,200	1,160	700	655	490	465	390	460
MT	49	55	42	38	33	32	29	27
NE	1,010	930	880	850	630	590	450	410
NV	1.2	0.6	0.8	0.6	0.6	0.2	0.4	0.9
NH	0.4	0.3	0.8	0.5	0.4	0.4	0.7	0.8
NJ	2.0	2.5	2.0	2.0	1.5	1.0	1.5	1.5
NM	0.5	0.2	0.4	0.3	0.4	0.4	0.2	0.2
NY	26.0	25.0	21.0	16.0	17.0	13.0	18.0	12.0
NC	3,020	3,150	2,290	2,200	1,770	1,770	1,640	1,650
ND	44	61	29	24	23	20	16	17
OH	600	650	515	535	400	395	255	275
OK	830	790	420	390	260	240	490	480
OR	4.5	4.0	4.5	4.0	3.5	3.0	3.5	3.0
PA	285	290	335	345	215	230	195	215
RI	0.6	0.6	0.4	0.4	0.2	0.2	0.1	0.1
SC	27	29	71	61	67	61	62	60
SD	390	335	270	275	240	215	225	200
TN	48	44	50	44	35	29	52	51
TX	285	145	235	170	205	165	295	230
UT	235	260	170	135	140	130	120	130
VT	1.0	1.2	0.4	0.4	0.4	0.4	0.4	0.4
VA	90	100	85	90	75	70	75	80
WA	6.0	6.0	7.0	5.0	5.0	4.0	3.0	3.0
WV	1.0	0.5	1.0	0.5	1.0	0.5	2.5	2.0
WI	105	120	100	80	55	55	60	55
WY	25	28	11	15	16	11	8	5
US ¹	19,428	19,085	17,396	17,062	12,731	12,529	11,533	11,282

¹ Weight groups may not add to Market due to rounding.

U.S. Hog Inventory & Market Hogs December 1

Million Head



**Hogs and Pigs: Breeding, Market, and Total Inventory
by State and United States, March 1, 2008-2009**

State	Breeding			Market			Total		
	2008	2009		2008	2009		2008	2009	
		Number	as % of 2008		Number	as % of 2008		Number	as % of 2008
	<i>1,000 Head</i>	<i>1,000 Head</i>	<i>Percent</i>	<i>1,000 Head</i>	<i>1,000 Head</i>	<i>Percent</i>	<i>1,000 Head</i>	<i>1,000 Head</i>	<i>Percent</i>
CO	155	150	97	625	590	94	780	740	95
IL	490	480	98	3,960	3,820	96	4,450	4,300	97
IN	310	270	87	3,340	3,280	98	3,650	3,550	97
IA	1,080	1,040	96	18,020	18,460	102	19,100	19,500	102
KS	170	165	97	1,710	1,655	97	1,880	1,820	97
MI	100	110	110	880	930	106	980	1,040	106
MN	590	580	98	6,910	6,820	99	7,500	7,400	99
MO	380	365	96	2,720	2,585	95	3,100	2,950	95
NE	370	385	104	2,930	2,815	96	3,300	3,200	97
NC	1,010	980	97	9,090	8,420	93	10,100	9,400	93
OH	165	170	103	1,685	1,810	107	1,850	1,980	107
OK	400	400	100	1,950	1,940	99	2,350	2,340	100
PA	100	90	90	1,050	1,020	97	1,150	1,110	97
SD	160	150	94	1,310	1,160	89	1,470	1,310	89
TX	105	95	90	985	995	101	1,090	1,090	100
UT	105	75	71	675	625	93	780	700	90
Oth Sts ¹	510	487	96	3,178	2,903	91	3,688	3,389	92
US ^{2,3}	6,200	5,992	97	61,018	59,828	98	67,218	65,819	98

¹ Individual State estimates not available for the 34 Other States.

² May not add due to rounding.

³ Utah is now a published state. Arkansas and Wisconsin are included in Other States.

**Market Hogs and Pigs: Inventory Number by Weight Group,
State, and United States, March 1, 2008-2009**

State	Under 50 Lbs.		50-119 Lbs.		120-179 Lbs.		180 Lbs. and Over	
	2008	2009	2008	2009	2008	2009	2008	2009
	<i>1,000 Head</i>	<i>1,000 Head</i>	<i>1,000 Head</i>	<i>1,000 Head</i>	<i>1,000 Head</i>	<i>1,000 Head</i>	<i>1,000 Head</i>	<i>1,000 Head</i>
CO	295	290	110	105	80	70	140	125
IL	1,320	1,350	1,020	1,100	900	770	720	600
IN	1,100	1,140	940	940	680	620	620	580
IA	4,990	4,840	5,140	5,560	4,440	4,690	3,450	3,370
KS	525	520	420	320	295	290	470	525
MI	290	315	245	265	170	160	175	190
MN	2,460	2,460	1,880	1,930	1,460	1,390	1,110	1,040
MO	1,140	1,135	625	585	530	465	425	400
NE	990	960	850	820	660	610	430	425
NC	3,280	3,080	2,400	2,160	1,890	1,710	1,520	1,470
OH	580	650	465	500	390	390	250	270
OK	880	810	380	420	220	210	470	500
PA	295	320	325	305	230	200	200	195
SD	445	410	320	290	280	245	265	215
TX	300	280	230	230	210	200	245	285
UT	255	250	165	145	142	120	113	110
Oth Sts ¹	1,132	999	835	751	616	592	596	562
US ^{2 3}	20,277	19,809	16,350	16,426	13,193	12,732	11,199	10,862

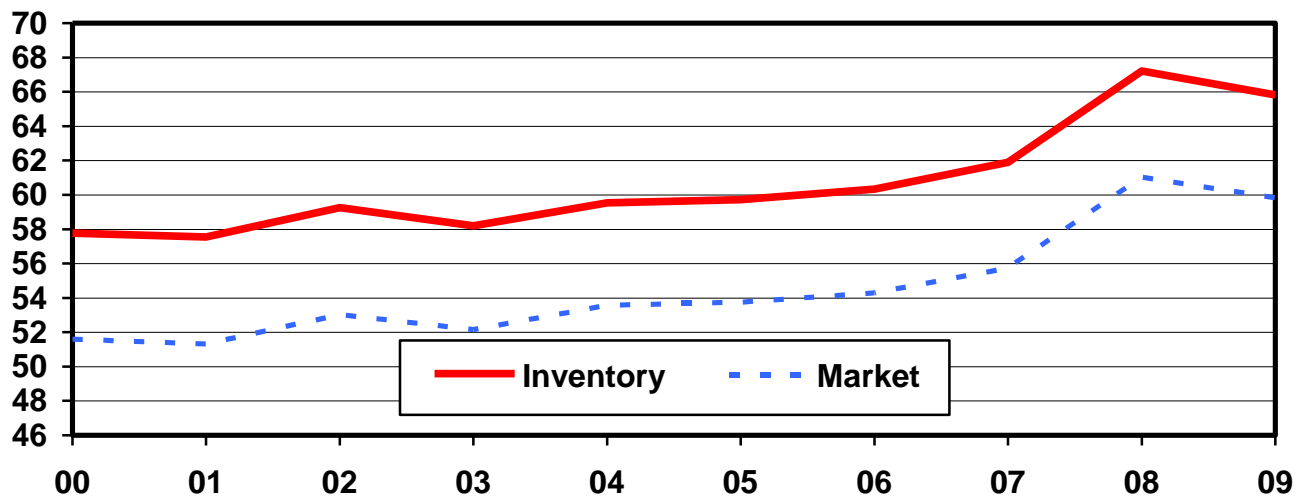
¹ Individual State estimates not available for the 34 Other States.

² Weight groups may not add to Market Hogs and Pigs due to rounding.

³ Utah is now a published state. Arkansas and Wisconsin are included in Other States.

U.S. Hog Inventory & Market Hogs March 1

Million Head



**Hogs and Pigs: Breeding, Market, and Total Inventory
by State and United States, June 1, 2008-2009**

State	Breeding			Market			Total		
	2008	2009		2008	2009		2008	2009	
		Number	as % of 2008		Number	as % of 2008		Number	as % of 2008
	<i>1,000 Head</i>	<i>1,000 Head</i>	<i>Percent</i>	<i>1,000 Head</i>	<i>1,000 Head</i>	<i>Percent</i>	<i>1,000 Head</i>	<i>1,000 Head</i>	<i>Percent</i>
CO	150	150	100	610	590	97	760	740	97
IL	460	480	104	3,890	3,870	99	4,350	4,350	100
IN	290	270	93	3,360	3,330	99	3,650	3,600	99
IA	1,080	1,020	94	18,320	18,780	103	19,400	19,800	102
KS	170	170	100	1,610	1,620	101	1,780	1,790	101
MI	100	110	110	930	950	102	1,030	1,060	103
MN	580	580	100	6,920	6,920	100	7,500	7,500	100
MO	380	345	91	2,720	2,705	99	3,100	3,050	98
NE	380	390	103	3,020	2,910	96	3,400	3,300	97
NC	1,020	990	97	9,080	8,710	96	10,100	9,700	96
OH	165	170	103	1,725	1,840	107	1,890	2,010	106
OK	400	400	100	1,960	1,890	96	2,360	2,290	97
PA	95	90	95	1,085	1,060	98	1,180	1,150	97
SD	150	155	103	1,280	1,135	89	1,430	1,290	90
TX	105	95	90	965	925	96	1,070	1,020	95
UT	90	75	83	680	645	95	770	720	94
Oth Sts ¹	516	478	93	3,114	2,962	95	3,630	3,439	95
US ^{2 3}	6,131	5,968	97	61,269	60,842	99	67,400	66,809	99

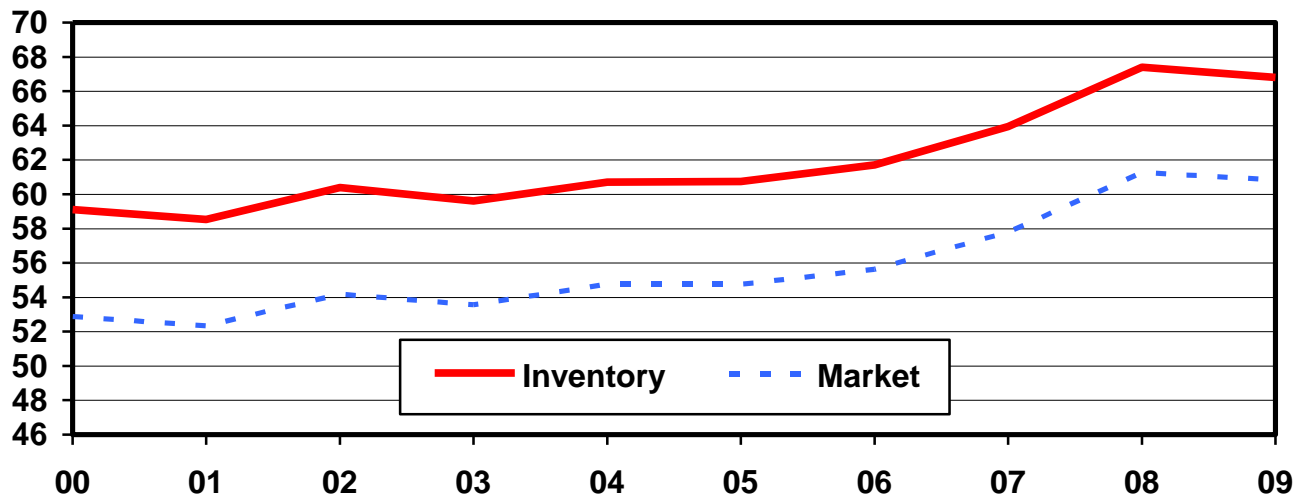
¹ Individual State estimates not available for the 34 Other States.

² May not add due to rounding.

³ Utah is now a published state. Arkansas and Wisconsin are included in Other States.

U.S. Hog Inventory & Market Hogs June 1

Million Head



**Market Hogs and Pigs: Inventory Number by Weight Group,
State, and United States, June 1, 2008-2009**

State	Under 50 Lbs.		50-119 Lbs.		120-179 Lbs.		180 Lbs. and Over	
	2008	2009	2008	2009	2008	2009	2008	2009
	<i>1,000 Head</i>	<i>1,000 Head</i>	<i>1,000 Head</i>	<i>1,000 Head</i>	<i>1,000 Head</i>	<i>1,000 Head</i>	<i>1,000 Head</i>	<i>1,000 Head</i>
CO	275	280	150	125	70	70	115	115
IL	1,250	1,220	1,140	1,220	850	790	650	640
IN	1,050	1,100	1,030	1,040	670	630	610	560
IA	4,850	4,850	5,640	5,980	4,450	4,530	3,380	3,420
KS	480	465	390	380	260	285	480	490
MI	290	325	265	285	185	160	190	180
MN	2,370	2,370	2,050	2,140	1,470	1,380	1,030	1,030
MO	1,155	1,205	685	630	475	455	405	415
NE	1,000	980	930	880	650	630	440	420
NC	3,300	3,090	2,550	2,350	1,760	1,740	1,470	1,530
OH	560	640	505	535	400	395	260	270
OK	880	770	410	400	220	210	450	510
PA	285	320	355	350	235	205	210	185
SD	430	390	355	305	255	225	240	215
TX	280	265	260	255	205	205	220	200
UT	260	250	164	155	137	120	119	120
Oth Sts ¹	1,092	1,034	832	808	600	574	591	547
US ^{2 3}	19,807	19,554	17,711	17,838	12,892	12,604	10,860	10,847

¹ Individual State estimates not available for the 34 Other States.

² Weight groups may not add to Market Hogs and Pigs due to rounding.

³ Utah is now a published state. Arkansas and Wisconsin are included in Other States.

**Hogs and Pigs: Breeding, Market, and Total Inventory
by State and United States, September 1, 2008-2009**

State	Breeding			Market			Total		
	2008	2009		2008	2009		2008	2009	
		Number	as % of 2008		Number	as % of 2008		Number	as % of 2008
	<i>1,000 Head</i>	<i>1,000 Head</i>	<i>Percent</i>	<i>1,000 Head</i>	<i>1,000 Head</i>	<i>Percent</i>	<i>1,000 Head</i>	<i>1,000 Head</i>	<i>Percent</i>
CO	150	150	100	600	580	97	750	730	97
IL	470	470	100	3,930	3,830	97	4,400	4,300	98
IN	280	280	100	3,320	3,320	100	3,600	3,600	100
IA	1,070	1,010	94	18,730	18,690	100	19,800	19,700	99
KS	170	160	94	1,640	1,600	98	1,810	1,760	97
MI	100	110	110	950	950	100	1,050	1,060	101
MN	570	560	98	7,030	6,740	96	7,600	7,300	96
MO	375	350	93	2,775	2,700	97	3,150	3,050	97
NE	375	380	101	2,925	2,970	102	3,300	3,350	102
NC	1,000	980	98	9,300	9,020	97	10,300	10,000	97
OH	165	160	97	1,755	1,890	108	1,920	2,050	107
OK	400	410	103	2,060	1,950	95	2,460	2,360	96
PA	85	90	106	1,035	1,030	100	1,120	1,120	100
SD	150	150	100	1,210	1,130	93	1,360	1,280	94
TX	105	70	67	1,015	940	93	1,120	1,010	90
UT	85	80	94	715	680	95	800	760	95
Oth Sts ¹	511	465	91	3,145	2,932	93	3,656	3,396	93
US ^{2,3}	6,061	5,875	97	62,135	60,952	98	68,196	66,826	98

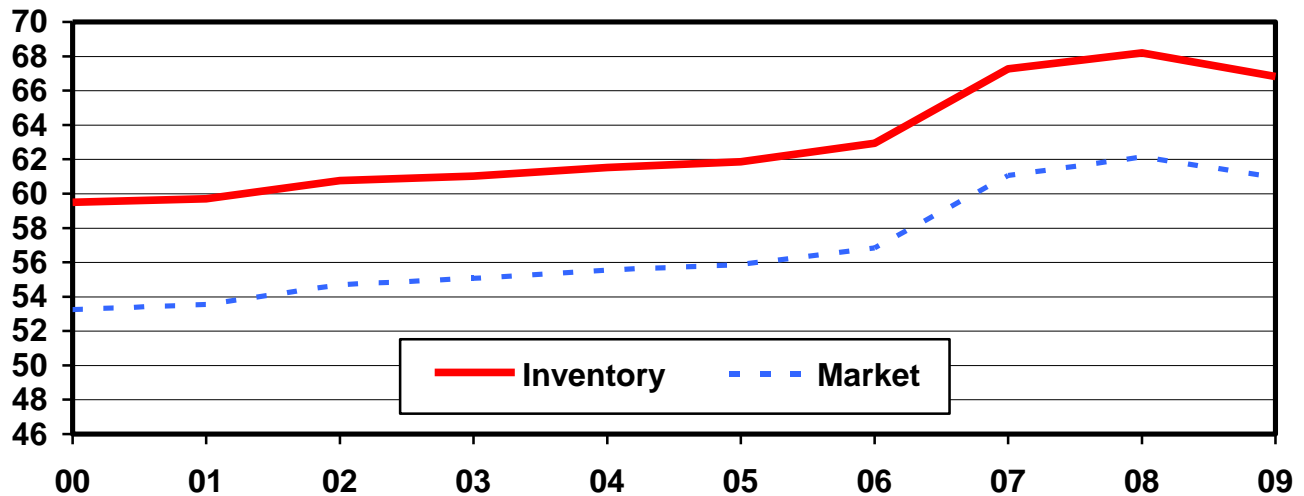
¹ Individual State estimates not available for the 34 Other States.

² May not add due to rounding.

³ Utah is now a published state. Arkansas and Wisconsin are included in Other States.

U.S. Hog Inventory & Market Hogs September 1

Million Head



**Market Hogs and Pigs: Inventory Number by Weight Group,
State, and United States, September 1, 2008-2009**

State	Under 50 Lbs.		50-119 Lbs.		120-179 Lbs.		180 Lbs. and Over	
	2008	2009	2008	2009	2008	2009	2008	2009
	<i>1,000 Head</i>	<i>1,000 Head</i>	<i>1,000 Head</i>	<i>1,000 Head</i>	<i>1,000 Head</i>	<i>1,000 Head</i>	<i>1,000 Head</i>	<i>1,000 Head</i>
CO	280	285	135	120	70	55	115	120
IL	1,290	1,270	1,140	1,150	840	770	660	640
IN	1,090	1,140	1,000	970	620	600	610	610
IA	5,110	4,840	5,680	5,760	4,460	4,600	3,480	3,490
KS	520	505	350	330	275	290	495	475
MI	325	330	270	265	185	160	170	195
MN	2,570	2,420	2,070	2,010	1,400	1,280	990	1,030
MO	1,230	1,150	685	635	495	470	365	445
NE	990	1,000	880	870	610	650	445	450
NC	3,370	3,200	2,380	2,390	1,860	1,790	1,690	1,640
OH	595	675	515	540	400	410	245	265
OK	890	830	410	380	240	250	520	490
PA	290	285	335	310	215	210	195	225
SD	415	370	325	300	240	230	230	230
TX	295	270	280	230	205	200	235	240
UT	270	265	170	155	145	130	130	130
Oth Sts ¹	1,113	1,003	812	763	595	589	626	578
US ^{2 3}	20,643	19,838	17,437	17,178	12,855	12,684	11,201	11,253

¹ Individual State estimates not available for the 34 Other States.

² Weight groups may not add to Market Hogs and Pigs due to rounding.

³ Utah is now a published state. Arkansas and Wisconsin are included in Other States.

**Annual Farrowings: Number of Sows, Pigs per Litter, and Pig Crop
by State and United States, December-November 2008-2009**

State	Sows Farrowing ¹			Pigs per Litter ¹		Pig Crop ¹		
	2008	2009		2008	2009	2008	2009	
		Number	as % of 2008				Number	as % of 2008
	<i>1,000 Head</i>	<i>1,000 Head</i>	<i>Percent</i>	<i>Number</i>	<i>Number</i>	<i>1,000 Head</i>	<i>1,000 Head</i>	<i>Percent</i>
AL	27.0	32.0	119	8.93	8.47	241.0	271.0	112
AK	0.18	0.38	211	8.89	7.11	1.6	2.7	169
AZ	32.0	32.0	100	9.78	9.66	313.0	309.0	99
AR	185	168	91	9.72	9.73	1,799.0	1,634.0	91
CA	21.00	14.00	67	9.33	8.43	196.0	118.0	60
CO	312	289	93	8.90	9.14	2,778.0	2,642.0	95
CT	0.50	0.50	100	8.00	8.20	4.0	4.1	103
DE	6.00	4.00	67	9.33	9.00	56.0	36.0	64
FL	8.00	7.00	88	7.00	7.71	56.0	54.0	96
GA	71.0	67.0	94	9.08	9.30	645.0	623.0	97
HI	2.80	2.60	93	7.14	7.23	20.0	18.8	94
ID	7.80	9.30	119	8.85	8.71	69.0	81.0	117
IL	965	1,005	104	9.36	9.49	9,036.0	9,535.0	106
IN	580	545	94	9.14	9.44	5,299.0	5,143.0	97
IA	2,050	1,970	96	9.36	9.70	19,193.0	19,108.0	100
KS	323	327	101	9.18	9.29	2,966.0	3,037.0	102
KY	73.0	74.0	101	9.18	9.11	670.0	674.0	101
LA	3.30	1.70	52	6.79	8.29	22.4	14.1	63
ME	1.30	1.10	85	7.31	7.27	9.5	8.0	84
MD	8.50	8.00	94	8.00	8.00	68.0	64.0	94
MA	1.80	1.40	78	7.78	8.00	14.0	11.2	80
MI	211	220	104	9.51	9.69	2,007.0	2,131.0	106
MN	1,140	1,130	99	9.60	9.94	10,944.0	11,229.0	103
MS	75.0	76.0	101	9.63	9.68	722.0	736.0	102
MO	775	750	97	9.49	9.76	7,356.0	7,321.0	100
MT	37.0	42.5	115	10.16	10.14	376.0	431.0	115
NE	745	740	99	9.65	9.92	7,189.0	7,344.0	102
NV	0.40	0.96	240	6.50	6.67	2.6	6.4	246
NH	0.40	0.40	100	8.00	8.50	3.2	3.4	106
NJ	1.00	1.20	120	6.90	7.33	6.9	8.8	128
NM	0.40	0.40	100	8.00	8.00	3.2	3.2	100
NY	18.00	14.00	78	9.39	10.00	169.0	140.0	83
NC	2,180	2,130	98	9.44	9.64	20,573.0	20,530.0	100
ND	67.5	74.5	110	9.87	10.24	666.0	763.0	115
OH	356	349	98	9.26	9.48	3,298.0	3,307.0	100
OK	745	755	101	9.34	9.23	6,956.0	6,966.0	100
OR	5.00	4.40	88	9.00	8.64	45.0	38.0	84
PA	162	170	105	9.48	9.85	1,536.0	1,675.0	109
RI	0.70	0.50	71	7.43	7.00	5.2	3.5	67
SC	49.0	30.0	61	9.16	8.53	449.0	256.0	57
SD	339	332	98	9.73	10.02	3,297.0	3,325.0	101
TN	43.0	36.0	84	9.21	9.00	396.0	324.0	82
TX	207	171	83	8.93	9.44	1,848.0	1,614.0	87
UT	163	167	102	9.90	9.85	1,614.0	1,645.0	102
VT	0.60	0.70	117	8.00	8.00	4.8	5.6	117
VA	56.0	52.0	93	9.43	9.38	528.0	488.0	92
WA	5.40	5.90	109	9.07	8.47	49.0	50.0	102
WV	1.40	1.10	79	7.43	6.55	10.4	7.2	69
WI	99	93	94	9.03	9.05	894.0	842.0	94
WY	63.5	62.0	98	9.84	9.56	625.0	593.0	95
US ²	12,225	11,969	98	9.41	9.62	115,030	115,174	100

¹ December preceding year.

² May not add due to rounding.

**Farrowings: Number of Sows, Pigs per Litter, and Pig Crop
by State and United States, December-February 2008-2010**

State	Sows Farrowing ¹				Pigs Per Litter ¹		Pig Crop ^{1 2}		
	2008	2009	2010 ³		2008	2009	2008	2009	
			Number	as % of 2009				Number	as % of 2008
	<i>1,000 Head</i>	<i>1,000 Head</i>	<i>1,000 Head</i>	<i>Percent</i>	<i>Number</i>	<i>Number</i>	<i>1,000 Head</i>	<i>1,000 Head</i>	<i>Percent</i>
CO	84	75	74	99	9.05	8.60	760	645	85
IL	240	250	255	102	9.25	9.50	2,220	2,375	107
IN	150	140	140	100	9.00	9.30	1,350	1,302	96
IA	510	500	500	100	9.20	9.60	4,692	4,800	102
KS	86	81	91	112	9.10	9.10	783	737	94
MI	52	53	60	113	9.45	9.70	491	514	105
MN	285	285	290	102	9.25	9.75	2,636	2,779	105
MO	190	190	190	100	9.20	9.35	1,748	1,777	102
NE	190	185	175	95	9.50	9.75	1,805	1,804	100
NC	550	530	500	94	9.20	9.55	5,060	5,062	100
OH	89	88	87	99	9.15	9.40	814	827	102
OK	180	190	185	97	9.35	8.90	1,683	1,691	100
PA	43	40	48	120	9.50	9.75	409	390	95
SD	88	83	74	89	9.60	9.85	845	818	97
TX	54	46	28	61	9.00	9.65	486	444	91
UT	39	42	41	98	9.70	9.70	378	407	108
Oth Sts ⁴	241	233	216	93	9.25	9.36	2,228	2,180	98
US ^{5 6}	3,071	3,011	2,954	98	9.24	9.48	28,388	28,552	101

¹ December preceding year.

² Number of pigs born December-February that were still on hand March 1, or had been sold.

³ Intentions.

⁴ Individual State estimates not available for the 34 Other States.

⁵ May not add due to rounding.

⁶ Utah is now a published state. Arkansas and Wisconsin are included in Other States.

**Farrowings: Number of Sows, Pigs per Litter, and Pig Crop
by State and United States, March-May 2008-2010**

State	Sows Farrowing				Pigs per Litter		Pig Crop ¹		
	2008	2009	2010 ²		2008	2009	2008	2009	
			Number	as % of 2009				Number	as % of 2008
	<i>1,000 Head</i>	<i>1,000 Head</i>	<i>1,000 Head</i>	<i>Percent</i>	<i>Number</i>	<i>Number</i>	<i>1,000 Head</i>	<i>1,000 Head</i>	<i>Percent</i>
CO	81	72	75	104	8.85	9.00	717	648	90
IL	230	250	260	104	9.35	9.50	2,151	2,375	110
IN	145	135	140	104	9.10	9.40	1,320	1,269	96
IA	520	495	500	101	9.35	9.65	4,862	4,777	98
KS	80	81	90	111	9.10	9.40	728	761	105
MI	53	54	55	102	9.70	9.65	514	521	101
MN	285	285	295	104	9.50	9.95	2,708	2,836	105
MO	190	185	190	103	9.40	9.80	1,786	1,813	102
NE	185	190	180	95	9.60	9.90	1,776	1,881	106
NC	550	540	470	87	9.35	9.70	5,143	5,238	102
OH	89	88	88	100	9.40	9.50	837	836	100
OK	185	185	190	103	9.45	9.00	1,748	1,665	95
PA	41	42	47	112	9.45	9.75	388	410	106
SD	85	86	76	88	9.70	10.10	825	869	105
TX	51	48	28	58	8.60	9.70	439	466	106
UT	41	43	40	93	10.00	9.90	410	426	104
Oth Sts ³	241	239	211	88	9.47	9.28	2,279	2,221	97
US ^{4 5}	3,052	3,018	2,935	97	9.38	9.61	28,631	29,012	101

¹ Number of pigs born March-May that were still on hand June 1, or had been sold.

² Intentions.

³ Individual State estimates not available for the 34 Other States.

⁴ May not add due to rounding.

⁵ Utah is now a published state. Arkansas and Wisconsin are included in Other States.

**Farrowings: Number of Sows, Pigs per Litter, and Pig Crop
by State and United States, June-August 2008-2009**

State	Sows Farrowing			Pigs per Litter		Pig Crop ¹		
	2008	2009		2008	2009	2008	2009	
		Number	as % of 2008				Number	as % of 2008
	<i>1,000 Head</i>	<i>1,000 Head</i>	<i>Percent</i>	<i>Number</i>	<i>Number</i>	<i>1,000 Head</i>	<i>1,000 Head</i>	<i>Percent</i>
CO	76	72	95	8.90	9.50	676	684	101
IL	240	245	102	9.45	9.50	2,268	2,328	103
IN	145	135	93	9.25	9.50	1,341	1,283	96
IA	510	475	93	9.40	9.75	4,794	4,631	97
KS	81	80	99	9.15	9.30	741	744	100
MI	53	57	108	9.25	9.60	490	547	112
MN	285	275	96	9.80	10.00	2,793	2,750	98
MO	195	185	95	9.70	10.00	1,892	1,850	98
NE	185	185	100	9.70	10.05	1,795	1,859	104
NC	560	540	96	9.65	9.70	5,404	5,238	97
OH	89	86	97	9.50	9.60	846	826	98
OK	195	190	97	9.35	9.50	1,823	1,805	99
PA	38	42	111	9.60	10.00	365	420	115
SD	82	83	101	9.80	10.00	804	830	103
TX	52	46	88	8.55	9.00	445	414	93
UT	43	42	98	9.90	10.00	426	420	99
Oth Sts ²	246	227	92	9.50	9.44	2,337	2,148	92
US ^{3 4}	3,075	2,965	96	9.51	9.70	29,240	28,777	98

¹ Number of pigs born June-August that were still on hand September 1, or had been sold.

² Individual State estimates not available for the 34 Other States.

³ May not add due to rounding.

⁴ Utah is now a published state. Arkansas and Wisconsin are included in Other States.

**Farrowings: Number of Sows, Pigs per Litter, and Pig Crop
by State and United States, September-November 2008-2009**

State	Sows Farrowing			Pigs per Litter		Pig Crop ¹		
	2008	2009		2008	2009	2008	2009	
		Number	as % of 2008				Number	as % of 2008
	<i>1,000 Head</i>	<i>1,000 Head</i>	<i>Percent</i>	<i>Number</i>	<i>Number</i>	<i>1,000 Head</i>	<i>1,000 Head</i>	<i>Percent</i>
CO	71	70	99	8.80	9.50	625	665	106
IL	255	260	102	9.40	9.45	2,397	2,457	103
IN	140	135	96	9.20	9.55	1,288	1,289	100
IA	510	500	98	9.50	9.80	4,845	4,900	101
KS	76	85	112	9.40	9.35	714	795	111
MI	53	56	106	9.65	9.80	512	549	107
MN	285	285	100	9.85	10.05	2,807	2,864	102
MO	200	190	95	9.65	9.90	1,930	1,881	97
NE	185	180	97	9.80	10.00	1,813	1,800	99
NC	520	520	100	9.55	9.60	4,966	4,992	101
OH	89	87	98	9.00	9.40	801	818	102
OK	185	190	103	9.20	9.50	1,702	1,805	106
PA	40	46	115	9.35	9.90	374	455	122
SD	84	80	95	9.80	10.10	823	808	98
TX	50	31	62	9.55	9.35	478	290	61
UT	40	40	100	10.00	9.80	400	392	98
Oth Sts ²	245	219	89	9.37	9.47	2,296	2,073	90
US ^{3 4}	3,028	2,974	98	9.50	9.70	28,771	28,833	100

¹ Number of pigs born September-November that were still on hand December 1, or had been sold.

² Individual State estimates not available for the 34 Other States.

³ May not add due to rounding.

⁴ Utah is now a published state. Arkansas and Wisconsin are included in Other States.

**Monthly Farrowings: Number of Sows, Pigs per Litter, and Pig Crop,
United States, December-November 2008-2009**

Month	Sows Farrowing ¹		Pigs per Litter		Pig Crop ¹	
	2008	2009	2008	2009	2008	2009
	<i>1,000 Head</i>	<i>1,000 Head</i>	<i>Number</i>	<i>Number</i>	<i>1,000 Head</i>	<i>1,000 Head</i>
Dec ²	1,017	997	9.22	9.50	9,381	9,475
Jan	1,028	1,013	9.24	9.45	9,502	9,576
Feb	1,026	1,001	9.26	9.49	9,505	9,501
Mar	1,049	1,009	9.35	9.56	9,811	9,650
Apr	998	1,003	9.38	9.61	9,370	9,644
May	1,004	1,006	9.41	9.66	9,450	9,718
Jun	1,046	998	9.48	9.71	9,917	9,693
Jul	1,020	988	9.52	9.70	9,712	9,589
Aug	1,009	980	9.53	9.69	9,611	9,495
Sep	1,047	1,009	9.50	9.71	9,951	9,794
Oct	1,005	987	9.48	9.70	9,529	9,574
Nov	976	978	9.52	9.68	9,292	9,465
Total	12,225	11,969	9.41	9.62	115,030	115,174

¹ Monthly values may not add to quarterly or annual totals due to rounding.

² December preceding year.

Reliability of December 1 Hogs and Pigs Estimates

Survey Procedures: A random sample of roughly 11,700 U.S. producers was surveyed to provide data for these estimates. Survey procedures ensured that all hog and pig producers, regardless of size, had a chance to be included in the survey. Large producers were sampled more heavily than small operations. During the first half of December 2009, data were collected from about 9,500 operations, 81 percent of the total sample. The data collected were received by electronic data reporting (EDR), mail, telephone, and face-to-face personal interviews. Regardless of when operations responded, they were asked to report inventories as of December 1, 2009.

Estimation Procedures: Hogs and pigs estimates were prepared by the Agricultural Statistics Board after reviewing recommendations and analysis submitted by each field office. National and State survey data were reviewed for reasonableness with each other and with estimates from past years using a balance sheet. The balance sheet begins with the previous inventory estimate, adds the estimates of births and imports, and subtracts the estimates of slaughter, exports, and deaths. This indicated ending inventory level is compared to the Agricultural Statistics Board estimate for reasonableness.

Revision Policy: Revisions to previous estimates are made to improve quarter to quarter relationships. Estimates for the previous four quarters are subject to revision when current estimates are made. In December, estimates for all quarters of the current and previous year are reviewed. The reviews are primarily based on hog check-off receipts and slaughter. Estimates will also be reviewed after data from the Department of Agriculture five-year Census of Agriculture are available. No revisions will be made after that date.

Reliability: Since all operations raising hogs are not included in the sample, survey estimates are subject to sampling variability. Survey results are also subject to non-sampling errors such as omissions, duplication, and mistakes in reporting, recording, and processing the data. The affects of these errors cannot be measured directly. They are minimized through rigid quality controls in the data collection process and through a careful review of all reported data for consistency and reasonableness.

To assist users in evaluating the reliability of the estimates in this report, the "**Root Mean Square Error**" is shown for selected items in the following table. The "Root Mean Square Error" is a statistical measure based on past performance and is computed using the difference between first and final estimates. The "Root Mean Square Error" for hog inventory estimates over the past 20 quarters is 1.6 percent. This means that chances are 2 out of 3 that the final estimate will not be above or below the current estimate of 65.8 million head by more than 1.6 percent. Chances are 9 out of 10 that the difference will not exceed 2.7 percent.

Reliability of December 1 Hog Estimates

Item	Root Mean Square Error	90% Confidence Level		Difference Between First and Latest Estimates			Quarters	
				Average	Smallest	Largest	First Above Latest	First Below Latest
				<i>1,000 Head</i>	<i>1,000 Head</i>	<i>1,000 Head</i>	<i>Number</i>	<i>Number</i>
All Hogs & Pigs	1.6	2.7	1,777	722	67	3,067	4	16
Pig Crop	2.0	3.5	1,009	385	5	1,644	4	16
Expected Farrowings								
Next Quarter	2.4	4.1	121	46	3	216	4	16
Following Quarter	2.6	4.5	132	52	3	220	4	16

Information Contacts

Listed below are the commodity specialists in the Livestock Branch of the National Agricultural Statistics Service to contact for additional information.

Dan Kerestes, Chief, Livestock Branch (202) 720-3570

Livestock Section

Scott Hollis, Head, Livestock Section (202) 690-2424
 Jim Collom - Dairy Products (202) 690-3236
 Joe Gaynor - Dairy Products Prices (202) 690-2168
 Jason Hardegree - Cattle, Cattle on Feed (202) 720-3040
 Sherry Bertramsen - Livestock Slaughter (515) 284-4340
 Everett Olbert - Sheep and Goats (202) 720-4751
 Mike Miller - Milk Production and Milk Cows (202) 720-3278
 Nick Streff - Hogs and Pigs (202) 720-3106

ACCESS TO REPORTS!!

For your convenience, there are several ways to obtain NASS reports, data products, and services:

INTERNET ACCESS

All NASS reports are available free of charge. For free access, connect to the Internet and go to the NASS Home Page at: www.nass.usda.gov.

E-MAIL SUBSCRIPTION

All NASS reports are available by subscription free of charge direct to your e-mail address. Starting with the NASS Home Page at www.nass.usda.gov, under the right navigation, *Receive reports by Email*, click on **National** or **State**. Follow the instructions on the screen.

PRINTED REPORTS OR DATA PRODUCTS

CALL OUR TOLL-FREE ORDER DESK: 800-999-6779 (U.S. and Canada)
Other areas, please call 703-605-6220 FAX: 703-605-6880
(Visa, MasterCard, check, or money order acceptable for payment.)

ASSISTANCE

For **assistance** with general agricultural statistics or further information about NASS or its products or services, contact the **Agricultural Statistics Hotline** at **800-727-9540**, 7:30 a.m. to 4:00 p.m. ET, or e-mail: nass@nass.usda.gov.

The U.S. Department of Agriculture (USDA) prohibits discrimination in all its programs and activities on the basis of race, color, national origin, age, disability, and where applicable, sex, marital status, familial status, parental status, religion, sexual orientation, genetic information, political beliefs, reprisal, or because all or a part of an individual's income is derived from any public assistance program. (Not all prohibited bases apply to all programs.) Persons with disabilities who require alternative means for communication of program information (Braille, large print, audiotape, etc.) should contact USDA's TARGET Center at (202) 720-2600 (voice and TDD).

To file a complaint of discrimination, write to USDA, Director, Office of Civil Rights, 1400 Independence Avenue, S.W., Washington, D.C. 20250-9410, or call (800) 795-3272 (voice) or (202) 720-6382 (TDD). USDA is an equal opportunity provider and employer.