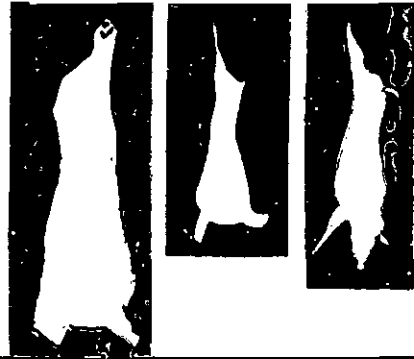


# LIVESTOCK SLAUGHTER



MAY 1964

June 30, 1964

## MAY RED MEAT PRODUCTION 1 PERCENT GREATER THAN A YEAR EARLIER

Commercial production of red meat during May in the 48 States was 2,548 million pounds--up 1 percent from a year earlier, but 6 percent less than the previous month, according to the Crop Reporting Board. Commercial meat production includes slaughter in federally inspected and other commercial plants but excludes farm slaughter.

## JANUARY-MAY RED MEAT OUTPUT UP 7 PERCENT FROM LAST YEAR

There were 13,059 million pounds of red meat produced during the first five months of 1964, an increase of 7 percent from the corresponding period of 1963. Of the January-May total, 7,246 million pounds were beef, up 11 percent from a year earlier; 338 million were veal, down 1 percent; 5,175 million were pork, up 2 percent; and 300 million pounds were lamb and mutton, down 5 percent. Lard production for January-May was 1,040 million pounds, up 2 percent from the same period a year earlier.

During the five-month period, the number of cattle slaughtered was 9 percent more than in the same period of 1963; calves were down 2 percent; hogs, up 1 percent; and sheep and lambs, down 6 percent.

## BEEF PRODUCTION UP 7 PERCENT FROM PREVIOUS YEAR

Beef production during May was 1,509 million pounds--up 7 percent from May 1963 but about the same as April 1964. The number of cattle slaughtered during May was 2,509,000 head, 7 percent greater than a year earlier but about the same as a month earlier. The average live weight of cattle slaughtered in May was 1,036 pounds per head, 7 pounds heavier than May 1963, but 6 pounds lighter than April 1964.

## VEAL PRODUCTION DOWN 2 PERCENT FROM A YEAR EARLIER

There were 64 million pounds of veal produced during May, 2 percent less than a year earlier and 4 percent less than a month earlier. The 485,700 head of calves slaughtered during May was 3 percent below May 1963 and 13 percent below April 1964. Calves slaughtered during May averaged 239 pounds per head live weight, 6 pounds heavier than last year and 25 pounds heavier than last month.

May commercial meat and lard production, 48 States, with comparisons 1/

Month and year	Beef	Veal	Pork <u>2/</u>	Lamb and mutton	Total red meat <u>2/</u>	Poultry <u>3/</u>	Lard <u>4/</u>
	Million pounds	Million pounds	Million pounds	Million pounds	Million pounds	Million pounds	Million pounds
May 1963	1,404	65	986	59	2,514	571	206
April 1964	1,514	67	1,072	60	2,713	541	213
May 1964	1,509	64	920	55	2,548	569	194
Jan.-May 1963 <u>5/</u>	6,501	342	5,064	316	12,223	2,460	1,024
Jan.-May 1964 <u>5/</u>	7,246	338	5,175	300	13,059	2,615	1,040

1/ Excludes farm slaughter. 2/ Excludes lard and rendered pork fat. 3/ Chicken and turkey meat ready-to-cook basis, excludes slaughter on farms for home use and non-farm production. Estimates of monthly poultry meat production based on available indications of marketings developed from information on inventories, number raised, intentions to raise, and market poultry as well as data on chick placements and current monthly marketings. 4/ Includes rendered pork fat. 5/ Accumulated totals based on unrounded data.

May commercial livestock slaughter, 48 States, with comparisons 1/

Species, month, and year	Number slaughtered			Average	Total
	Federally inspected	Other commercial	Total	live weight	live weight
	1,000 head	1,000 head	1,000 head	Pounds	Million pounds
<b>CATTLE</b>					
May 1963	1,874.8	472.8	2,347.6	1,029	2,416
April 1964	2,045.2	460.3	2,505.5	1,042	2,612
May 1964	2,069.7	439.3	2,509.0	1,036	2,598
Jan.-May 1963 <u>2/</u>	8,650.1	2,289.4	10,939.5	1,031	11,281
Jan.-May 1964 <u>2/</u>	9,715.5	2,244.1	11,959.6	1,045	12,501
<b>CALVES</b>					
May 1963	330.0	172.0	502.0	233	117
April 1964	378.6	179.1	557.7	214	120
May 1964	321.4	164.3	485.7	239	116
Jan.-May 1963 <u>2/</u>	1,904.8	915.2	2,820.0	216	609
Jan.-May 1964 <u>2/</u>	1,854.3	897.7	2,752.0	219	603
<b>HOGS</b>					
May 1963	5,910.1	984.2	6,894.3	240	1,656
April 1964	6,480.7	951.3	7,432.0	239	1,779
May 1964	5,476.0	870.7	6,346.7	244	1,546
Jan.-May 1963 <u>2/</u>	30,810.2	4,991.0	35,801.2	237	8,473
Jan.-May 1964 <u>2/</u>	31,230.6	4,766.3	35,996.9	239	8,621
<b>SHEEP AND LAMBS</b>					
May 1963	1,062.1	169.3	1,231.4	98	120
April 1964	1,052.1	134.2	1,186.3	102	122
May 1964	986.1	133.0	1,119.1	98	110
Jan.-May 1963 <u>2/</u>	5,684.5	718.0	6,402.5	100	643
Jan.-May 1964 <u>2/</u>	5,349.2	655.2	6,004.4	101	609

1/ Excludes farm slaughter. 2/ Accumulated totals based on unrounded head and live weight.

COMMERCIAL CATTLE SLAUGHTER 1/

STATE 2/	MAY				JANUARY-MAY			
	NUMBER SLAUGHTERED		TOTAL LIVE WEIGHT		NUMBER SLAUGHTERED		TOTAL LIVE WEIGHT	
	1963	1964	1963	1964	1963	1964	1963	1964
	1,000 HEAD	1,000 HEAD	1,000 POUNDS	1,000 POUNDS	1,000 HEAD	1,000 HEAD	1,000 POUNDS.	1,000 POUNDS
NEW ENG...	17.5	15.7	17,039	16,082	93.3	88.8	91,642	89,998
N.Y.....	37.5	32.0	41,025	35,424	180.5	172.0	197,819	192,738
N.J.....	38.5	31.0	47,124	38,564	179.0	175.5	218,988	217,552
PA.....	76.0	72.5	82,308	79,895	361.5	365.5	394,516	403,031
OHIO.....	101.0	100.0	100,293	100,200	477.5	496.5	475,366	504,737
IND.....	57.5	66.0	58,708	68,640	275.5	308.0	283,679	323,958
ILL.....	101.0	118.0	102,010	126,378	504.0	562.0	532,454	598,543
MICH.....	62.0	59.5	66,526	61,880	296.0	297.5	313,861	315,413
WIS.....	79.5	86.5	87,212	95,064	385.5	424.5	427,176	478,996
MINN.....	124.0	137.0	134,416	150,700	582.0	670.0	626,936	737,637
IOWA.....	284.0	310.0	311,548	338,210	1,301.0	1,452.0	1,418,818	1,605,127
MO.....	102.0	102.0	106,386	105,468	477.5	499.5	496,041	525,812
N.DAK.....	9.7	11.7	10,592	12,706	44.3	55.6	48,413	61,278
S.DAK.....	40.5	44.5	45,279	48,772	188.5	221.0	207,198	245,127
NEBR.....	203.0	238.0	214,774	258,706	944.0	1,120.0	994,914	1,216,685
KANS.....	108.0	123.0	109,512	126,813	513.5	578.0	525,813	603,438
DEL.-MD...	10.5	11.9	11,427	12,921	51.1	54.6	55,978	60,666
VA.....	16.1	15.7	16,164	16,548	74.8	77.7	76,162	81,203
W.VA.....	5.4	4.9	5,373	4,929	26.3	25.2	27,056	25,934
N.C.....	12.8	11.8	12,045	11,198	62.5	61.2	58,369	58,519
S.C.....	7.3	7.7	6,256	6,276	36.3	36.1	31,677	30,616
GA.....	27.5	28.5	22,935	23,826	132.4	137.3	110,535	113,249
FLA.....	28.0	27.5	26,852	25,575	129.5	143.0	121,956	135,838
KY.....	14.4	15.7	13,349	14,648	70.9	77.2	66,614	73,505
TENN.....	36.0	39.0	32,940	35,997	165.5	189.5	154,206	177,697
ALA.....	19.1	17.8	16,751	15,735	89.4	90.3	80,070	81,072
MISS.....	28.0	30.0	23,296	24,660	110.1	124.0	94,164	104,570
ARK.....	11.0	10.9	9,185	8,992	48.1	52.1	40,735	43,689
LA.....	10.4	11.6	8,091	8,955	49.6	49.3	39,900	39,546
OKLA.....	29.5	37.0	26,462	33,189	142.4	175.5	126,818	158,629
TEXAS.....	155.0	183.0	140,120	165,981	659.0	755.0	592,866	677,512
MONT.....	9.6	10.9	9,581	11,042	42.3	51.4	42,961	52,823
IDAHO.....	19.0	20.5	19,855	21,750	96.4	100.4	101,415	105,985
WYO.....	1.7	1.9	1,712	1,925	7.2	8.2	7,285	8,413
COLO.....	112.0	121.0	119,616	127,776	498.5	523.0	523,274	556,137
N.MEX.....	14.4	15.0	13,752	14,340	60.2	72.0	57,320	68,658
ARIZ.....	18.7	19.0	16,475	16,777	86.3	92.9	76,821	83,333
UTAH.....	21.6	23.4	22,507	24,313	100.2	109.3	104,603	114,263
NEV.....	1.7	1.9	1,753	2,014	8.4	9.1	8,625	9,382
WASH.....	40.5	42.5	42,039	44,710	189.0	203.0	195,691	215,699
OREG.....	20.7	20.5	20,969	21,054	105.5	104.9	106,533	107,821
CALIF.....	235.0	232.0	242,050	239,656	1,094.0	1,151.0	1,125,731	1,196,487
48 ST.....	2,347.6		2,416,307		10,939.5		11,280,999	
		2,509.0		2,598,289		11,959.6		12,501,316

1/ INCLUDES SLAUGHTER UNDER FEDERAL INSPECTION AND OTHER COMMERCIAL SLAUGHTER, EXCLUDES FARM SLAUGHTER.

2/ NEW ENGLAND INCLUDES MAINE, NEW HAMPSHIRE, VERMONT, MASSACHUSETTS, RHODE ISLAND AND CONNECTICUT.

COMMERCIAL CALF SLAUGHTER 1/

STATE 2/	MAY				JANUARY-MAY			
	NUMBER SLAUGHTERED		TOTAL LIVE WEIGHT		NUMBER SLAUGHTERED		TOTAL LIVE WEIGHT	
	1963	1964	1963	1964	1963	1964	1963	1964
	1,000 HEAD	1,000 HEAD	1,000 POUNDS	1,000 POUNDS	1,000 HEAD	1,000 HEAD	1,000 POUNDS	1,000 POUNDS
NEW ENG....	24.8	22.9	2,413	2,328	156.3	144.1	14,877	13,562
N.Y.....	63.0	61.5	6,741	8,118	403.5	412.0	40,766	49,082
N.J.....	28.5	27.0	5,700	5,616	132.8	129.2	25,597	25,457
PA.....	45.5	41.0	6,780	5,904	276.0	258.5	35,622	33,225
OHIO.....	11.5	10.4	2,242	2,070	55.3	52.7	10,475	10,113
IND.....	9.2	6.0	2,024	1,170	44.7	42.4	9,780	9,186
ILL.....	22.3	24.6	4,527	3,690	124.8	132.8	19,954	19,113
MICH.....	28.0	17.0	5,096	2,737	142.5	118.0	24,471	19,442
WIS.....	57.5	49.5	7,475	6,435	368.0	324.0	44,690	39,807
MINN.....	13.4	14.5	2,439	3,103	84.1	89.3	14,735	17,313
IOWA.....	24.2	22.4	4,477	4,256	165.7	156.4	29,737	27,321
MO.....	4.4	7.2	1,201	2,045	20.8	29.7	5,608	7,962
N.DAK.....	--	--	--	--	.1	.1	32	35
S.DAK.....	--	--	--	--	--	--	--	--
NEBR.....	.4	.6	170	267	2.6	2.9	1,103	1,258
KANS.....	4.1	4.1	1,833	1,874	21.4	21.3	9,906	9,492
DEL.-MD...	4.5	4.2	743	745	23.1	20.5	3,609	3,422
VA.....	19.3	18.6	4,960	4,892	78.8	80.7	20,721	19,881
W.VA.....	.7	.7	156	142	4.2	3.4	796	681
N.C.....	1.5	1.3	322	250	7.4	6.1	1,598	1,222
S.C.....	7.1	9.1	2,258	2,994	32.8	41.5	11,000	14,335
GA.....	4.5	3.2	1,912	1,514	27.4	17.8	12,603	8,611
FLA.....	7.8	13.6	2,168	4,134	46.0	64.8	13,965	21,101
KY.....	2.4	1.7	521	396	10.7	8.0	2,362	1,878
TENN.....	11.4	15.8	2,964	3,934	52.8	68.3	12,713	17,154
ALA.....	1.7	3.3	745	1,634	10.0	14.7	4,817	7,297
MISS.....	7.3	9.5	3,416	4,617	29.4	34.7	14,248	17,310
ARK.....	.7	2.2	346	763	5.9	8.1	2,565	3,050
LA.....	17.1	19.5	7,661	8,990	76.9	88.9	35,550	40,649
OKLA.....	4.6	4.1	2,364	2,218	22.9	20.6	12,232	11,295
TEXAS.....	47.0	38.5	25,850	21,098	240.5	204.0	133,592	113,006
MONT.....	.1	.1	33	31	.5	.6	163	192
IDAHO.....	.2	.2	55	55	1.5	1.0	427	259
WYO.....	.1	--	25	--	.1	.1	25	28
COLO.....	.3	.4	142	180	1.9	1.9	852	859
N.MEX.....	.1	.1	41	49	.5	.3	222	135
ARIZ.....	.7	.6	305	288	3.6	3.0	1,641	1,380
UTAH.....	.6	.7	220	265	3.1	2.9	1,127	1,081
NEV.....	.1	.2	39	70	.5	1.1	197	394
WASH.....	1.4	1.3	398	403	7.1	7.0	2,079	2,158
OREG.....	1.5	1.6	456	486	8.1	8.3	2,516	2,602
CALIF.....	22.5	26.5	5,648	6,307	125.7	130.3	30,266	31,020
48 ST.....	502.0	485.7	116,866	116,068	2,820.0	2,752.0	609,239	603,368

1/ INCLUDES SLAUGHTER UNDER FEDERAL INSPECTION AND OTHER COMMERCIAL SLAUGHTER, EXCLUDES FARM SLAUGHTER.

2/ NEW ENGLAND INCLUDES MAINE, NEW HAMPSHIRE, VERMONT, MASSACHUSETTS, RHODE ISLAND AND CONNECTICUT.

COMMERCIAL HOG SLAUGHTER 1/

STATE 2/	MAY				JANUARY-MAY			
	NUMBER SLAUGHTERED		TOTAL LIVE WEIGHT		NUMBER SLAUGHTERED		TOTAL LIVE WEIGHT	
	1963	1964	1963	1964	1963	1964	1963	1964
	1,000 HEAD	1,000 HEAD	1,000 POUNDS	1,000 POUNDS	1,000 HEAD	1,000 HEAD	1,000 POUNDS	1,000 POUNDS
NEW ENG...	55.3	44.7	12,840	10,187	272.3	254.0	61,999	58,417
N.Y.....	89.0	79.5	19,758	17,808	509.5	440.0	109,192	98,120
N.J.....	122.0	104.0	25,010	22,256	635.0	573.0	131,390	120,465
PA.....	269.0	248.0	60,525	57,040	1,381.0	1,376.0	308,280	310,048
OHIO.....	383.0	357.0	85,026	79,611	1,936.0	1,992.0	427,850	445,080
IND.....	348.0	342.0	86,652	85,842	1,927.0	2,071.0	471,215	508,865
ILL.....	534.0	444.0	134,568	113,664	2,816.0	2,421.0	697,145	600,658
MICH.....	166.0	162.0	37,848	37,098	845.0	871.0	189,974	198,436
WIS.....	269.0	268.0	64,022	64,588	1,433.0	1,559.0	335,565	365,772
MINN.....	459.0	386.0	117,963	100,360	2,513.0	2,384.0	621,205	596,713
IOWA.....	1,300.0	1,258.0	323,700	317,016	6,752.0	7,175.0	1,650,353	1,761,888
MO.....	327.0	285.0	83,385	71,820	1,706.0	1,643.0	427,600	412,878
N.DAK.....	1.2	1.2	270	287	6.6	6.7	1,463	1,565
S.DAK.....	208.0	190.0	56,160	51,680	1,106.0	1,118.0	282,547	291,041
NEBR.....	380.0	343.0	97,660	90,895	1,954.0	1,939.0	493,618	498,980
KANS.....	253.0	223.0	62,491	56,642	1,268.0	1,243.0	311,201	310,516
DEL.-MD...	56.2	58.7	11,704	12,413	260.9	282.1	54,589	60,250
VA.....	200.0	189.0	44,200	41,580	999.0	1,028.0	217,830	227,398
W.VA.....	10.2	8.0	2,448	1,904	53.4	45.1	12,871	10,718
N.C.....	109.0	109.0	23,762	24,634	558.0	592.0	123,987	134,374
S.C.....	38.5	36.0	8,586	8,568	203.5	198.5	45,315	46,769
GA.....	124.0	136.0	25,792	28,968	735.0	808.0	153,249	173,629
FLA.....	41.0	36.5	8,446	7,811	245.0	225.5	48,058	47,863
KY.....	123.0	124.0	27,183	28,396	636.0	692.0	141,466	156,764
TENN.....	240.0	213.0	55,920	50,907	1,114.0	1,185.0	257,827	281,334
ALA.....	79.5	70.0	17,092	15,680	379.0	383.0	83,547	84,775
MISS.....	72.5	70.5	16,022	16,144	344.5	370.5	75,938	84,246
ARK.....	27.0	26.5	6,156	6,201	132.3	137.0	30,347	32,192
LA.....	14.4	14.5	3,082	3,103	81.3	79.0	17,196	16,722
OKLA.....	57.5	54.0	14,548	13,878	271.0	279.5	67,206	71,470
TEXAS.....	162.0	124.0	37,746	30,256	799.0	737.0	185,871	176,916
MONT.....	25.0	21.8	5,625	4,927	127.7	120.5	28,654	27,229
IDAHO.....	11.0	10.4	2,409	2,278	60.7	55.4	13,135	12,139
WYO.....	3.2	3.0	720	705	15.4	15.4	3,470	3,590
COLO.....	59.5	53.5	13,566	12,305	296.5	287.5	67,924	66,388
N.MEX.....	9.3	8.2	2,120	1,919	44.1	41.9	10,020	9,776
ARIZ.....	12.1	11.1	2,771	2,608	59.9	62.9	13,715	14,638
UTAH.....	23.4	21.8	5,265	4,970	117.4	124.9	26,378	28,196
NEV.....	.5	.3	110	67	2.2	2.0	496	438
WASH.....	61.5	57.5	13,899	12,995	327.0	314.5	72,914	70,976
OREG.....	29.5	28.0	6,490	6,328	177.0	158.0	39,166	35,264
CALIF.....	141.0	126.0	32,430	30,114	701.0	706.0	161,414	167,892
48 ST.....	6,894.3	6,346.7	1,655,970	1,546,453	35,801.2	35,996.9	8,473,180	8,621,388

1/ INCLUDES SLAUGHTER UNDER FEDERAL INSPECTION AND OTHER COMMERCIAL SLAUGHTER, EXCLUDES FARM SLAUGHTER.  
 2/ NEW ENGLAND INCLUDES MAINE, NEW HAMPSHIRE, VERMONT, MASSACHUSETTS, RHODE ISLAND AND CONNECTICUT.

COMMERCIAL SHEEP AND LAMB SLAUGHTER 1/

STATE 2/	MAY				JANUARY-MAY			
	NUMBER SLAUGHTERED		TOTAL LIVE WEIGHT		NUMBER SLAUGHTERED		TOTAL LIVE WEIGHT	
	1963	1964	1963	1964	1963	1964	1963	1964
	1,000 HEAD	1,000 HEAD	1,000 POUNDS	1,000 POUNDS	1,000 HEAD	1,000 HEAD	1,000 POUNDS	1,000 POUNDS
NEW ENG....	.8	.9	75	85	5.8	6.5	469	499
N.Y.....	45.5	41.5	4,095	4,150	248.0	234.5	22,140	23,301
N.J.....	90.0	87.5	8,640	8,312	449.5	443.5	44,780	44,100
PA.....	16.7	13.9	1,420	1,209	117.8	70.7	10,748	6,240
OHIO.....	11.7	9.8	994	853	57.7	52.4	5,071	4,589
IND.....	11.4	6.0	1,197	594	51.1	45.3	5,246	4,720
ILL.....	56.5	50.0	5,650	5,150	314.0	276.0	31,448	28,445
MICH.....	55.0	29.5	5,500	3,009	287.0	174.1	29,344	18,119
WIS.....	1.8	1.8	164	176	10.5	9.9	957	913
MINN.....	36.5	43.5	3,650	4,394	319.0	331.0	32,885	34,154
IOWA.....	90.5	69.5	9,140	6,880	577.5	429.0	59,268	43,636
MO.....	37.0	35.5	3,552	3,372	192.5	219.0	19,180	21,846
N.DAK.....	--	--	--	--	38.8	53.4	4,136	5,522
S.DAK.....	28.5	29.5	3,050	3,216	163.0	164.0	17,606	17,808
NEBR.....	68.5	78.5	7,124	8,164	448.5	475.5	47,284	49,788
KANS.....	27.5	28.0	2,640	2,688	133.0	122.8	13,241	12,295
DEL.-MD....	6.0	5.4	575	502	28.1	25.6	2,571	2,434
VA.....	.3	.2	29	19	.9	.7	85	70
W.VA.....	.4	.4	37	38	2.5	2.6	234	246
N.C.....	.1	.1	10	10	.2	.3	20	30
S.C.....	.2	--	20	--	.9	.2	84	21
GA.....	.1	.1	11	8	.2	.2	17	17
FLA.....	.1	.2	10	15	.1	.5	10	37
KY.....	11.9	7.3	1,178	766	45.5	36.1	4,490	3,731
TENN.....	4.2	6.2	386	595	14.5	18.3	1,319	1,694
ALA.....	.1	.1	10	10	.3	.4	29	39
MISS.....	--	.1	--	10	.2	.2	20	20
ARK.....	--	.1	--	10	.1	.1	9	10
LA.....	.3	.2	24	19	.8	.6	63	53
OKLA.....	.7	.3	72	31	2.1	1.9	208	207
TEXAS.....	196.0	194.0	16,464	17,460	696.0	659.5	60,999	60,193
MONT.....	.4	.2	42	19	3.0	2.1	298	209
IDAHO.....	1.4	1.0	144	101	13.3	4.6	1,471	478
WYO.....	.2	.1	22	12	16.0	1.0	1,665	114
COLO.....	121.0	110.0	12,584	11,110	809.0	794.0	84,979	82,751
N.MEX.....	3.4	3.0	330	324	17.1	15.6	1,728	1,637
ARIZ.....	2.8	1.8	308	203	11.6	7.1	1,208	823
UTAH.....	40.0	46.0	4,000	4,692	185.0	274.5	19,219	28,812
NEV.....	.7	.3	79	30	2.9	1.4	301	142
WASH.....	10.9	10.6	1,134	1,145	56.4	52.5	5,989	5,623
OREG.....	16.3	11.0	1,630	1,089	64.1	54.8	6,555	5,683
CALIF.....	236.0	195.0	24,072	19,695	1,018.0	942.0	106,091	97,806
48 ST.....	1,231.4	1,119.1	120,062	110,165	6,402.5	6,004.4	643,465	608,855

1/ INCLUDES SLAUGHTER UNDER FEDERAL INSPECTION AND OTHER COMMERCIAL SLAUGHTER, EXCLUDES FARM SLAUGHTER.

2/ NEW ENGLAND INCLUDES MAINE, NEW HAMPSHIRE, VERMONT, MASSACHUSETTS, RHODE ISLAND AND CONNECTICUT.

LIVESTOCK SLAUGHTER, AVERAGE LIVE WEIGHT PER HEAD,  
MAY 1963 AND 1964 1/

STATE 2/	CATTLE		CALVES		HOGS		SHEEP AND LAMBS	
	1963	1964	1963	1964	1963	1964	1963	1964
	POUNDS	POUNDS	POUNDS	POUNDS	POUNDS	POUNDS	POUNDS	POUNDS
NEW ENG....	974	1,024	97	102	232	228	94	94
N.Y.....	1,094	1,107	107	132	222	224	90	100
N.J.....	1,224	1,244	200	208	205	214	96	95
PA.....	1,083	1,102	149	144	225	230	85	87
OHIO.....	993	1,002	195	199	222	223	85	87
IND.....	1,021	1,040	220	195	249	251	105	99
ILL.....	1,010	1,071	203	150	252	256	100	103
MICH.....	1,073	1,040	182	161	228	229	100	102
WIS.....	1,097	1,099	130	130	238	241	91	98
MINN.....	1,084	1,100	182	214	257	260	100	101
IOWA.....	1,097	1,091	185	190	249	252	101	99
MO.....	1,043	1,034	273	284	255	252	96	95
N.DAK.....	1,092	1,086	--	--	225	239	--	--
S.DAK.....	1,118	1,096	--	--	270	272	107	109
NEBR.....	1,058	1,087	426	445	257	265	104	104
KANS.....	1,014	1,031	447	457	247	254	96	96
DEL.-MD....	1,088	1,086	165	177	208	211	96	93
VA.....	1,004	1,054	257	263	221	220	98	94
W.VA.....	995	1,006	223	203	240	238	92	95
N.C.....	941	949	215	192	218	226	100	100
S.C.....	857	815	318	329	223	238	98	--
GA.....	834	836	425	473	208	213	114	75
FLA.....	959	930	278	304	206	214	100	75
KY.....	927	933	217	233	221	229	99	105
TENN.....	915	923	260	249	233	239	92	96
ALA.....	877	884	438	495	215	224	101	98
MISS.....	832	822	468	486	221	229	--	97
ARK.....	835	825	494	347	228	234	--	100
LA.....	778	772	448	461	214	214	79	93
OKLA.....	897	897	514	541	253	257	103	104
TEXAS.....	904	907	550	548	233	244	84	90
MONT.....	998	1,013	327	310	225	226	106	95
IDAHO.....	1,045	1,061	274	274	219	219	103	101
WYO.....	1,007	1,013	252	--	225	235	111	120
COLO.....	1,068	1,056	472	450	228	230	104	101
N.MEX.....	955	956	408	490	228	234	97	108
ARIZ.....	881	883	436	480	229	235	110	113
UTAH.....	1,042	1,039	367	379	225	228	100	102
NEV.....	1,031	1,060	388	350	220	222	113	100
WASH.....	1,038	1,052	284	310	226	226	104	108
OREG.....	1,013	1,027	304	304	220	226	100	99
CALIF.....	1,030	1,033	251	238	230	239	102	101
48 ST.....	1,029	1,036	233	239	240	244	98	98

1/ INCLUDES SLAUGHTER UNDER FEDERAL INSPECTION AND OTHER COMMERCIAL SLAUGHTER,  
EXCLUDES FARM SLAUGHTER.

2/ NEW ENGLAND INCLUDES MAINE, NEW HAMPSHIRE, VERMONT, MASSACHUSETTS, RHODE ISLAND  
AND CONNECTICUT.

OFFICIAL BUSINESS

(Continued from page 1)

PRODUCTION OF PORK 7 PERCENT LESS THAN MAY 1963

Pork production during May was 920 million pounds--7 percent less than May 1963 and 14 percent less than April 1964. The hog kill for May was 6,346,700 head, 8 percent less than a year earlier and 15 percent less than a month earlier. The average live weight of hogs slaughtered during the month was 244 pounds per head, 4 pounds heavier than May last year and 5 pounds heavier than last month. Lard rendered per 100 pounds of live weight of hogs was 12.5 pounds this May compared with 12.4 pounds in May 1963 and 12.0 pounds in April 1964.

LAMB AND MUTTON OUTPUT DOWN 7 PERCENT FROM LAST YEAR

There were 55 million pounds of lamb and mutton produced during May, down 7 percent from a year earlier and 8 percent less than a month earlier. The number of sheep and lambs slaughtered during the month was 1,119,100 head, 9 percent less than May 1963 and 6 percent less than April 1964. Sheep and lambs slaughtered during May averaged 98 pounds per head live weight, the same as a year earlier, but 4 pounds lighter than last month.

MAY POULTRY SLAUGHTER SAME AS A YEAR EARLIER

Production of poultry meat during May was 569 million pounds, ready-to-cook basis. This was the same as last year, but 5 percent more than April 1964.

HAWAII COMMERCIAL SLAUGHTER, MAY 1963 and 1964

Species	Number		Average		Total	
	slaughtered		live weight		live weight	
	1963	1964	1963	1964	1963	1964
	1,000 head		Pounds		1,000 pounds	
Cattle	4.4	4.3	984	974	4,330	4,188
Hogs	5.2	5.2	179	182	931	946

\* \* \* \* \*

This report is made possible through the cooperative efforts of the Meat Inspection Division, Agricultural Research Service, and the Statistical Reporting Service.