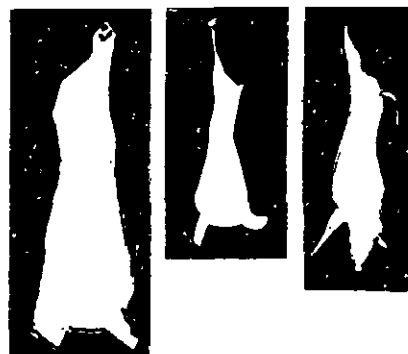


LIVESTOCK SLAUGHTER



JULY 1964

August 31, 1964

JULY RED MEAT PRODUCTION 8 PERCENT GREATER THAN A YEAR EARLIER

Commercial production of red meat during July in the 48 States was 2,533 million pounds, up 8 percent from a year earlier but 2 percent less than previous month, according to the Crop Reporting Board. Commercial meat production includes slaughter in Federally inspected and other commercial plants but excludes farm slaughter.

JANUARY-JULY RED MEAT OUTPUT UP 8 PERCENT FROM LAST YEAR

There were 18,173 million pounds of red meat produced during the first seven months of 1964, an increase of 8 percent from the corresponding period of 1963. Of the January-July total, 10,376 million pounds were beef, up 13 percent from a year earlier; 491 million were veal, up 4 percent; 6,893 million were pork, up 2 percent; and 413 million pounds were lamb and mutton, down 4 percent. Lard production for January-July was 1,395 million pounds, up 2 percent from the same period a year earlier.

During the seven-month period, the number of cattle slaughtered was 12 percent more than in the same period of 1963; calves up 2 percent; hogs up 1 percent; and sheep and lambs down 5 percent.

BEEF PRODUCTION UP 13 PERCENT FROM PREVIOUS YEAR

Beef production during July was 1,543 million pounds, up 13 percent from July 1963 but 3 percent below June 1964. The number of cattle slaughtered during July was 2,655,800 head, 14 percent greater than a year earlier but 1 percent less than a month earlier. The average live weight of cattle slaughtered in July was 1,005 pounds per head, 15 pounds less than July 1963 and 17 pounds below June 1964.

VEAL PRODUCTION UP 14 PERCENT FROM A YEAR EARLIER

There were 81 million pounds of veal produced during July, 14 percent more than a year earlier and 12 percent more than a month earlier. The 589,900 head of calves slaughtered during July was 10 percent above July 1963 and 14 percent more than June 1964. Calves slaughtered during July averaged 246 pounds per head live weight, 12 pounds heavier than last year but 1 pound less than the previous month.

(Continued on page 8)

UNITED STATES DEPARTMENT OF AGRICULTURE
Statistical Reporting Service
MtAn 1-2 (8-64)

Crop Reporting Board
Washington, D. C.

July commercial meat and lard production, 48 States, with comparisons 1/

| Month and year | Beef | Veal | Pork 2/ | Lamb and mutton | Total red meat 2/ | Poultry 3/ | Lard 4/ |
|-------------------|----------------|----------------|----------------|-----------------|-------------------|----------------|----------------|
| | Million pounds | Million pounds | Million pounds | Million pounds | Million pounds | Million pounds | Million pounds |
| July 1963 | 1,370 | 71 | 850 | 64 | 2,355 | 641 | 175 |
| June 1964 | 1,587 | 72 | 867 | 55 | 2,581 | 611 | 184 |
| July 1964 | 1,543 | 81 | 851 | 58 | 2,533 | 635 | 171 |
| Jan.-July 1963 5/ | 9,183 | 474 | 6,738 | 432 | 16,827 | 3,656 | 1,374 |
| Jan.-July 1964 5/ | 10,376 | 491 | 6,893 | 413 | 18,173 | 3,861 | 1,395 |

1/ Excludes farm slaughter. 2/ Excludes lard and rendered pork fat. 3/ Chicken and turkey meat ready-to-cook basis, excludes slaughter on farms for home use and non-farm production. Estimates of monthly poultry meat production based on available indications of marketings developed from information on inventories, number raised, intentions to raise and market poultry as well as data on chick placements and current monthly marketings. 4/ Includes rendered pork fat. 5/ Accumulated totals based on unrounded data.

July commercial livestock slaughter, 48 States, with comparisons 1/

| Species, month, and year | Number slaughtered | | | Average live weight | Total live weight |
|--------------------------|---------------------|------------------|------------|---------------------|-------------------|
| | Federally inspected | Other commercial | Total | | |
| | 1,000 head | 1,000 head | 1,000 head | Pounds | Million pounds |
| CATTLE | | | | | |
| July 1963 | 1,837.5 | 485.8 | 2,323.3 | 1,020 | 2,371 |
| June 1964 | 2,206.8 | 473.5 | 2,680.3 | 1,022 | 2,740 |
| July 1964 | 2,162.4 | 493.4 | 2,655.8 | 1,005 | 2,670 |
| Jan.-July 1963 2/ | 12,239.8 | 3,221.4 | 15,461.2 | 1,029 | 15,914 |
| Jan.-July 1964 2/ | 14,084.7 | 3,211.0 | 17,295.7 | 1,036 | 17,911 |
| CALVES | | | | | |
| July 1963 | 340.6 | 193.5 | 534.1 | 234 | 125 |
| June 1964 | 337.8 | 179.2 | 517.0 | 247 | 128 |
| July 1964 | 384.7 | 205.2 | 589.9 | 246 | 145 |
| Jan.-July 1963 2/ | 2,527.3 | 1,274.1 | 3,801.4 | 221 | 841 |
| Jan.-July 1964 2/ | 2,576.8 | 1,282.1 | 3,858.9 | 227 | 876 |
| HOGS | | | | | |
| July 1963 | 4,994.7 | 896.3 | 5,891.0 | 243 | 1,431 |
| June 1964 | 5,038.1 | 885.5 | 5,923.6 | 247 | 1,466 |
| July 1964 | 4,928.4 | 853.4 | 5,781.8 | 245 | 1,419 |
| Jan.-July 1963 2/ | 40,684.9 | 6,746.3 | 47,431.2 | 238 | 11,300 |
| Jan.-July 1964 2/ | 41,197.1 | 6,505.2 | 47,702.3 | 241 | 11,506 |
| SHEEP AND LAMBS | | | | | |
| July 1963 | 1,200.6 | 183.4 | 1,384.0 | 94 | 131 |
| June 1964 | 1,056.1 | 143.5 | 1,199.6 | 94 | 113 |
| July 1964 | 1,117.5 | 148.0 | 1,265.5 | 94 | 120 |
| Jan.-July 1963 2/ | 7,857.5 | 1,064.9 | 8,922.4 | 99 | 881 |
| Jan.-July 1964 2/ | 7,522.8 | 946.7 | 8,469.5 | 99 | 841 |

1/ Excludes farm slaughter. 2/ Accumulated totals based on unrounded head and live weight.

COMMERCIAL CATTLE SLAUGHTER 1/

| STATE 2/ | JULY | | | | JANUARY-JULY | | | |
|-------------|--------------------|---------------|-------------------|-----------------|--------------------|---------------|-------------------|-----------------|
| | NUMBER SLAUGHTERED | | TOTAL LIVE WEIGHT | | NUMBER SLAUGHTERED | | TOTAL LIVE WEIGHT | |
| | 1963 | 1964 | 1963 | 1964 | 1963 | 1964 | 1963 | 1964 |
| | 1,000 HEAD | 1,000 HEAD | 1,000 POUNDS | 1,000 POUNDS | 1,000 HEAD | 1,000 HEAD | 1,000 POUNDS | 1,000 POUNDS |
| NEW ENG.... | 18.0 | 16.7 | 17,715 | 17,153 | 126.8 | 121.1 | 124,662 | 123,370 |
| N.Y..... | 36.5 | 35.0 | 40,260 | 37,415 | 250.5 | 240.5 | 275,431 | 266,433 |
| N.J..... | 36.0 | 32.5 | 43,092 | 40,722 | 254.0 | 244.5 | 311,259 | 304,812 |
| PA..... | 78.5 | 81.0 | 84,858 | 86,022 | 510.5 | 525.5 | 556,148 | 574,215 |
| OHIO..... | 105.0 | 108.0 | 103,740 | 103,896 | 679.5 | 710.5 | 674,554 | 711,347 |
| IND..... | 60.5 | 72.5 | 60,137 | 73,515 | 390.5 | 452.5 | 398,806 | 472,065 |
| ILL..... | 108.0 | 132.0 | 112,320 | 135,696 | 710.0 | 825.0 | 750,418 | 870,217 |
| MICH..... | 67.5 | 67.0 | 71,482 | 69,144 | 422.0 | 429.0 | 447,236 | 451,831 |
| WIS..... | 80.5 | 86.0 | 86,376 | 91,246 | 537.0 | 600.5 | 589,238 | 666,182 |
| MINN..... | 120.0 | 144.0 | 128,160 | 152,208 | 812.0 | 966.0 | 874,886 | 1,052,941 |
| IOWA..... | 264.0 | 303.0 | 286,440 | 322,98 | 1,832.0 | 2,091.0 | 1,997,890 | 2,291,677 |
| MO..... | 98.0 | 109.0 | 100,450 | 109,109 | 666.0 | 715.5 | 691,063 | 744,061 |
| N.DAK..... | 10.2 | 12.9 | 10,924 | 13,339 | 64.3 | 81.9 | 69,921 | 89,169 |
| S.DAK..... | 41.5 | 46.5 | 45,733 | 50,360 | 271.5 | 319.0 | 299,287 | 351,777 |
| NEBR..... | 192.0 | 229.0 | 199,488 | 239,992 | 1,319.0 | 1,599.0 | 1,386,918 | 1,724,927 |
| KANS..... | 107.0 | 127.0 | 109,247 | 128,016 | 718.5 | 825.0 | 734,628 | 852,654 |
| DEL.-MD... | 10.9 | 11.4 | 11,608 | 11,697 | 71.8 | 78.5 | 78,016 | 85,692 |
| VA..... | 18.7 | 18.5 | 19,336 | 18,814 | 108.5 | 113.8 | 110,873 | 118,251 |
| W.VA..... | 5.8 | 5.6 | 5,643 | 5,449 | 37.2 | 36.4 | 37,733 | 36,843 |
| N.C..... | 14.1 | 15.3 | 12,634 | 13,877 | 87.9 | 90.5 | 81,286 | 85,416 |
| S.C..... | 7.5 | 9.2 | 6,450 | 7,627 | 51.2 | 53.3 | 44,484 | 45,147 |
| GA..... | 29.0 | 33.5 | 23,809 | 27,370 | 186.9 | 200.3 | 155,790 | 164,779 |
| FLA..... | 27.0 | 31.0 | 25,488 | 28,210 | 181.5 | 202.5 | 171,294 | 190,211 |
| KY..... | 15.0 | 17.9 | 13,650 | 16,074 | 98.9 | 112.4 | 92,250 | 105,409 |
| TENN..... | 38.5 | 50.0 | 35,382 | 44,200 | 236.5 | 285.0 | 219,066 | 262,574 |
| ALA..... | 19.3 | 21.0 | 16,714 | 17,934 | 126.2 | 131.2 | 111,956 | 116,578 |
| MISS..... | 29.5 | 37.0 | 25,016 | 30,081 | 167.1 | 196.0 | 141,675 | 162,826 |
| ARK..... | 12.3 | 14.4 | 10,246 | 11,851 | 71.1 | 80.2 | 59,883 | 66,733 |
| LA..... | 8.3 | 11.4 | 6,756 | 8,926 | 65.8 | 71.9 | 52,960 | 57,141 |
| OKLA..... | 29.5 | 44.0 | 26,344 | 38,104 | 200.4 | 258.0 | 178,470 | 230,497 |
| TEXAS..... | 156.0 | 200.0 | 141,492 | 174,200 | 967.0 | 1,143.0 | 869,942 | 1,020,724 |
| MONT..... | 10.6 | 14.9 | 10,579 | 14,587 | 62.4 | 79.3 | 63,059 | 80,410 |
| IDAHO..... | 21.4 | 22.7 | 21,807 | 22,995 | 135.5 | 144.3 | 141,559 | 151,240 |
| WYO..... | 1.9 | 2.3 | 1,976 | 2,245 | 10.8 | 12.5 | 10,968 | 12,682 |
| COLO..... | 101.0 | 119.0 | 108,373 | 125,902 | 699.5 | 763.0 | 740,647 | 810,057 |
| N.MEX..... | 15.4 | 16.4 | 14,522 | 15,465 | 88.8 | 105.1 | 84,276 | 99,587 |
| ARIZ..... | 17.4 | 18.4 | 15,242 | 16,008 | 122.0 | 131.0 | 108,149 | 116,204 |
| UTAH..... | 21.1 | 23.3 | 20,973 | 23,743 | 142.3 | 157.3 | 147,059 | 163,324 |
| NEV..... | 2.2 | 2.1 | 2,213 | 2,148 | 12.3 | 13.0 | 12,546 | 13,402 |
| WASH..... | 39.5 | 46.5 | 40,606 | 47,570 | 269.0 | 294.5 | 278,012 | 310,834 |
| OREG..... | 23.2 | 22.9 | 23,432 | 22,488 | 150.5 | 152.2 | 152,005 | 155,124 |
| CALIF..... | 225.0 | 245.0 | 230,175 | 251,615 | 1,546.0 | 1,644.0 | 1,587,673 | 1,701,806 |
| 48 ST..... | 2,323.3 | 2,655.8 | 2,370,888 | 2,670,011 | 15,461.2 | 17,295.7 | 15,913,976 | 17,911,169 |

1/ INCLUDES SLAUGHTER UNDER FEDERAL INSPECTION AND OTHER COMMERCIAL SLAUGHTER, EXCLUDES FARM SLAUGHTER.

2/ NEW ENGLAND INCLUDES MAINE, NEW HAMPSHIRE, VERMONT, MASSACHUSETTS, RHODE ISLAND AND CONNECTICUT.

COMMERCIAL CALF SLAUGHTER 1/

| STATE 2/ | JULY | | | | JANUARY-JULY | | | |
|-------------|--------------------|---------------|-------------------|-----------------|--------------------|---------------|-------------------|-----------------|
| | NUMBER SLAUGHTERED | | TOTAL LIVE WEIGHT | | NUMBER SLAUGHTERED | | TOTAL LIVE WEIGHT | |
| | 1963 | 1964 | 1963 | 1964 | 1963 | 1964 | 1963 | 1964 |
| | 1,000 HEAD | 1,000 HEAD | 1,000 POUNDS | 1,000 POUNDS | 1,000 HEAD | 1,000 HEAD | 1,000 POUNDS | 1,000 POUNDS |
| NEW ENG.... | 28.7 | 26.3 | 2,840 | 2,620 | 207.6 | 191.6 | 20,116 | 18,403 |
| N.Y..... | 64.5 | 70.0 | 6,772 | 8,960 | 521.5 | 536.0 | 54,760 | 65,602 |
| N.J..... | 32.5 | 34.5 | 6,338 | 7,418 | 193.8 | 196.2 | 37,692 | 40,090 |
| PA..... | 54.5 | 51.5 | 7,466 | 7,210 | 372.0 | 355.0 | 48,981 | 47,095 |
| OHIO..... | 11.9 | 9.6 | 2,380 | 1,862 | 77.7 | 72.1 | 14,892 | 13,945 |
| IND..... | 10.4 | 7.0 | 2,371 | 1,400 | 63.7 | 55.7 | 14,034 | 11,840 |
| ILL..... | 26.5 | 28.5 | 4,876 | 4,389 | 173.8 | 187.8 | 29,015 | 27,610 |
| MICH..... | 29.5 | 19.4 | 5,487 | 3,026 | 197.0 | 152.8 | 34,633 | 24,947 |
| WIS..... | 46.0 | 49.5 | 6,026 | 6,534 | 456.0 | 423.5 | 56,302 | 53,041 |
| MINN..... | 11.4 | 12.9 | 2,314 | 2,915 | 105.9 | 115.3 | 19,067 | 23,254 |
| IOWA..... | 18.7 | 24.0 | 3,553 | 4,560 | 200.5 | 203.6 | 36,349 | 36,289 |
| MO..... | 5.7 | 12.5 | 1,613 | 3,538 | 30.5 | 51.2 | 8,309 | 14,128 |
| N.DAK..... | .1 | -- | 35 | -- | .2 | .1 | 67 | 35 |
| S.DAK..... | .1 | .1 | 30 | 30 | .1 | .1 | 30 | 30 |
| NEBR..... | .7 | .5 | 253 | 212 | 4.6 | 3.9 | 1,863 | 1,676 |
| KANS..... | 4.8 | 5.1 | 1,958 | 2,132 | 29.7 | 30.7 | 13,338 | 13,460 |
| DEL.-MD... | 4.3 | 4.0 | 697 | 708 | 31.4 | 29.0 | 4,968 | 4,949 |
| VA..... | 20.5 | 22.5 | 4,982 | 5,512 | 116.7 | 125.3 | 29,792 | 30,918 |
| W.VA..... | .9 | .8 | 186 | 168 | 5.9 | 5.0 | 1,154 | 1,016 |
| N.C..... | 2.7 | 3.0 | 572 | 663 | 11.9 | 11.0 | 2,570 | 2,280 |
| S.C..... | 8.4 | 9.7 | 2,537 | 3,007 | 48.2 | 60.6 | 15,609 | 20,388 |
| GA..... | 3.6 | 3.9 | 1,462 | 1,607 | 34.5 | 24.8 | 15,486 | 11,598 |
| FLA..... | 11.4 | 20.1 | 3,295 | 5,507 | 65.2 | 101.0 | 19,444 | 31,422 |
| KY..... | 1.9 | 2.5 | 410 | 588 | 14.4 | 12.6 | 3,154 | 2,960 |
| TENN..... | 12.7 | 22.6 | 3,175 | 5,740 | 76.4 | 111.9 | 18,558 | 28,249 |
| ALA..... | 2.9 | 5.6 | 1,154 | 2,503 | 15.5 | 24.5 | 7,029 | 11,686 |
| MISS..... | 7.4 | 10.2 | 3,522 | 4,621 | 43.1 | 55.2 | 20,800 | 26,700 |
| ARK..... | .9 | 2.4 | 441 | 833 | 7.6 | 12.6 | 3,398 | 4,652 |
| LA..... | 20.0 | 26.5 | 8,760 | 11,607 | 114.0 | 137.2 | 51,424 | 61,652 |
| OKLA..... | 6.1 | 4.0 | 3,123 | 2,060 | 33.7 | 29.5 | 17,818 | 15,986 |
| TEXAS..... | 54.0 | 63.0 | 27,972 | 33,327 | 338.0 | 313.0 | 184,706 | 171,081 |
| MONT..... | .1 | .2 | 34 | 58 | .7 | 1.0 | 230 | 305 |
| IDAHO..... | .3 | .2 | 84 | 57 | 2.0 | 1.4 | 568 | 374 |
| WYO..... | -- | -- | -- | -- | .1 | .2 | 25 | 56 |
| COLO..... | .3 | .4 | 122 | 164 | 2.5 | 2.6 | 1,099 | 1,163 |
| N.MEX..... | -- | -- | -- | -- | .6 | .4 | 266 | 176 |
| ARIZ..... | .6 | .5 | 274 | 242 | 4.8 | 3.9 | 2,195 | 1,818 |
| UTAH..... | .6 | .6 | 211 | 199 | 4.2 | 4.2 | 1,508 | 1,535 |
| NEV..... | .2 | .3 | 78 | 110 | .9 | 1.6 | 352 | 573 |
| WASH..... | 1.7 | 1.8 | 454 | 578 | 10.4 | 10.8 | 2,984 | 3,382 |
| OREG..... | 1.7 | 1.7 | 524 | 568 | 11.2 | 11.8 | 3,480 | 3,724 |
| CALIF..... | 24.9 | 32.0 | 6,524 | 7,616 | 172.9 | 192.3 | 42,566 | 45,956 |
| 48 ST..... | 534.1 | 589.9 | 124,905 | 144,849 | 3,801.4 | 3,858.9 | 840,631 | 876,044 |

1/ INCLUDES SLAUGHTER UNDER FEDERAL INSPECTION AND OTHER COMMERCIAL SLAUGHTER, EXCLUDES FARM SLAUGHTER.

2/ NEW ENGLAND INCLUDES MAINE, NEW HAMPSHIRE, VERMONT, MASSACHUSETTS, RHODE ISLAND AND CONNECTICUT.

COMMERCIAL HOG SLAUGHTER 1/

| STATE 2/ | JULY | | | | JANUARY-JULY | | | |
|-------------|--------------------|---------------|-------------------|-----------------|--------------------|---------------|-------------------|-----------------|
| | NUMBER SLAUGHTERED | | TOTAL LIVE WEIGHT | | NUMBER SLAUGHTERED | | TOTAL LIVE WEIGHT | |
| | 1963 | 1964 | 1963 | 1964 | 1963 | 1964 | 1963 | 1964 |
| | 1,000 HEAD | 1,000 HEAD | 1,000 POUNDS | 1,000 POUNDS | 1,000 HEAD | 1,000 HEAD | 1,000 POUNDS | 1,000 POUNDS |
| NEW ENG... | 49.2 | 34.7 | 11,533 | 7,987 | 371.1 | 329.7 | 85,268 | 75,691 |
| N.Y..... | 73.5 | 72.0 | 16,244 | 15,984 | 660.0 | 590.0 | 142,222 | 131,264 |
| N.J..... | 103.0 | 108.0 | 20,806 | 23,004 | 837.0 | 789.0 | 173,184 | 166,473 |
| PA..... | 217.0 | 216.0 | 48,608 | 49,464 | 1,819.0 | 1,838.0 | 405,508 | 415,846 |
| OHIO..... | 330.0 | 357.0 | 72,600 | 80,682 | 2,598.0 | 2,708.0 | 574,818 | 606,537 |
| IND..... | 306.0 | 304.0 | 76,806 | 77,520 | 2,518.0 | 2,690.0 | 620,696 | 667,970 |
| ILL..... | 483.0 | 400.0 | 127,029 | 103,600 | 3,758.0 | 3,228.0 | 939,842 | 811,299 |
| MICH..... | 145.0 | 152.0 | 32,915 | 35,720 | 1,132.0 | 1,192.0 | 255,265 | 273,364 |
| WIS..... | 212.0 | 232.0 | 51,940 | 57,304 | 1,859.0 | 2,029.0 | 440,363 | 482,338 |
| MINN..... | 410.0 | 381.0 | 109,470 | 102,489 | 3,313.0 | 3,128.0 | 837,145 | 798,301 |
| IOWA..... | 1,034.0 | 1,088.0 | 261,602 | 275,264 | 8,835.0 | 9,360.0 | 2,177,352 | 2,319,081 |
| MO..... | 270.0 | 240.0 | 70,470 | 62,400 | 2,249.0 | 2,142.0 | 568,504 | 542,359 |
| N.DAK..... | 1.2 | 1.1 | 290 | 287 | 9.0 | 8.9 | 2,045 | 2,137 |
| S.DAK..... | 188.0 | 171.0 | 52,264 | 49,077 | 1,471.0 | 1,463.0 | 384,548 | 390,578 |
| NEBR..... | 323.0 | 295.0 | 85,918 | 79,650 | 2,607.0 | 2,543.0 | 666,656 | 663,605 |
| KANS..... | 206.0 | 200.0 | 51,088 | 51,600 | 1,680.0 | 1,644.0 | 410,081 | 413,371 |
| DEL.-MD... | 49.5 | 48.4 | 10,341 | 10,283 | 361.5 | 389.1 | 75,629 | 82,969 |
| VA..... | 173.0 | 175.0 | 38,060 | 38,150 | 1,336.0 | 1,387.0 | 291,642 | 306,580 |
| W.VA..... | 8.8 | 7.4 | 2,068 | 1,754 | 70.3 | 60.9 | 16,826 | 14,471 |
| N.C..... | 95.0 | 97.5 | 20,615 | 21,548 | 742.0 | 788.0 | 164,538 | 177,986 |
| S.C..... | 33.0 | 36.0 | 7,491 | 8,388 | 268.5 | 270.5 | 59,974 | 63,437 |
| GA..... | 114.0 | 122.0 | 23,826 | 24,888 | 959.0 | 1,054.0 | 199,515 | 225,053 |
| FLA..... | 35.0 | 34.5 | 7,070 | 7,418 | 311.5 | 296.5 | 61,774 | 62,800 |
| KY..... | 119.0 | 123.0 | 25,942 | 28,044 | 840.5 | 918.0 | 187,158 | 208,395 |
| TENN..... | 210.0 | 207.0 | 48,300 | 49,680 | 1,523.0 | 1,593.0 | 352,494 | 379,254 |
| ALA..... | 70.0 | 67.0 | 14,840 | 14,673 | 514.0 | 520.0 | 112,362 | 114,988 |
| MISS..... | 62.0 | 67.5 | 13,702 | 15,120 | 465.0 | 504.5 | 102,568 | 114,395 |
| ARK..... | 25.5 | 26.5 | 5,712 | 6,068 | 181.9 | 191.5 | 41,578 | 44,756 |
| LA..... | 13.7 | 13.5 | 2,891 | 2,848 | 108.2 | 106.9 | 22,833 | 22,608 |
| OKLA..... | 51.5 | 52.0 | 12,772 | 12,792 | 371.5 | 382.0 | 91,885 | 96,988 |
| TEXAS..... | 145.0 | 119.0 | 33,495 | 28,441 | 1,071.0 | 976.0 | 249,465 | 234,277 |
| MONT..... | 24.5 | 22.4 | 5,488 | 5,040 | 174.2 | 165.6 | 39,202 | 37,445 |
| IDAHO..... | 10.5 | 10.4 | 2,310 | 2,267 | 80.3 | 77.0 | 17,365 | 16,848 |
| WYO..... | 3.0 | 2.9 | 684 | 670 | 21.4 | 21.4 | 4,847 | 4,979 |
| COLO..... | 46.0 | 42.0 | 10,258 | 9,660 | 391.0 | 376.5 | 89,240 | 86,858 |
| N.MEX..... | 8.2 | 8.9 | 1,837 | 2,083 | 60.2 | 59.3 | 13,658 | 13,839 |
| ARIZ..... | 10.5 | 9.9 | 2,384 | 2,277 | 80.3 | 83.2 | 18,346 | 19,328 |
| UTAH..... | 21.0 | 18.4 | 4,746 | 4,195 | 159.2 | 164.1 | 35,846 | 37,113 |
| NEV..... | .4 | .3 | 88 | 65 | 3.1 | 2.7 | 694 | 594 |
| WASH..... | 59.0 | 52.0 | 13,098 | 11,700 | 442.5 | 421.5 | 98,724 | 95,216 |
| OREG..... | 32.0 | 26.5 | 7,104 | 5,962 | 241.0 | 213.5 | 53,534 | 47,780 |
| CALIF..... | 120.0 | 140.0 | 26,760 | 33,040 | 938.0 | 997.0 | 214,499 | 236,870 |
| 48 ST..... | 5,891.0 | 5,781.8 | 1,431,465 | 1,419,086 | 47,431.2 | 47,702.3 | 11,299,693 | 11,506,041 |

1/ INCLUDES SLAUGHTER UNDER FEDERAL INSPECTION AND OTHER COMMERCIAL SLAUGHTER, EXCLUDES FARM SLAUGHTER.

2/ NEW ENGLAND INCLUDES MAINE, NEW HAMPSHIRE, VERMONT, MASSACHUSETTS, RHODE ISLAND AND CONNECTICUT.

COMMERCIAL SHEEP AND LAMB SLAUGHTER 1/

| STATE 2/ | JULY | | | | JANUARY-JULY | | | |
|-------------|--------------------|---------------|-------------------|-----------------|--------------------|---------------|-------------------|-----------------|
| | NUMBER SLAUGHTERED | | TOTAL LIVE WEIGHT | | NUMBER SLAUGHTERED | | TOTAL LIVE WEIGHT | |
| | 1963 | 1964 | 1963 | 1964 | 1963 | 1964 | 1963 | 1964 |
| | 1,000 HEAD | 1,000 HEAD | 1,000 POUNDS | 1,000 POUNDS | 1,000 HEAD | 1,000 HEAD | 1,000 POUNDS | 1,000 POUNDS |
| NEW ENG.... | 1.1 | 1.3 | 95 | 107 | 7.8 | 8.9 | 645 | 699 |
| N.Y..... | 51.0 | 51.0 | 4,590 | 4,794 | 343.0 | 331.0 | 30,690 | 32,463 |
| N.J..... | 99.5 | 98.0 | 9,054 | 8,722 | 638.0 | 644.5 | 61,844 | 62,401 |
| PA..... | 21.4 | 16.3 | 1,776 | 1,320 | 157.3 | 102.8 | 14,062 | 8,887 |
| OHIO..... | 12.6 | 11.0 | 1,071 | 935 | 81.5 | 74.0 | 7,094 | 6,425 |
| IND..... | 14.4 | 7.8 | 1,469 | 749 | 76.7 | 59.5 | 7,835 | 6,051 |
| ILL..... | 64.0 | 76.5 | 5,888 | 7,497 | 422.0 | 406.0 | 41,428 | 41,132 |
| MICH..... | 69.5 | 30.5 | 7,089 | 3,080 | 410.0 | 232.6 | 41,997 | 24,083 |
| WIS..... | 2.2 | 1.9 | 196 | 179 | 14.7 | 13.7 | 1,333 | 1,271 |
| MINN..... | 50.0 | 55.5 | 4,850 | 5,328 | 406.5 | 434.5 | 41,335 | 44,136 |
| IOWA..... | 80.5 | 77.0 | 7,728 | 7,238 | 735.5 | 578.5 | 74,358 | 57,834 |
| MO..... | 38.5 | 39.5 | 3,504 | 3,594 | 264.0 | 299.0 | 25,720 | 29,166 |
| N.DAK..... | -- | .1 | -- | 10 | 38.8 | 53.5 | 4,136 | 5,532 |
| S.DAK..... | 30.0 | 29.5 | 3,060 | 2,950 | 220.5 | 221.0 | 23,581 | 23,700 |
| NEBR..... | 91.0 | 72.0 | 8,918 | 6,984 | 601.5 | 624.0 | 62,340 | 64,498 |
| KANS..... | 25.5 | 27.5 | 2,320 | 2,502 | 181.3 | 177.3 | 17,681 | 17,254 |
| DEL.-MD... | 7.9 | 6.0 | 737 | 547 | 42.0 | 38.9 | 3,885 | 3,653 |
| VA..... | .8 | .4 | 70 | 36 | 2.9 | 1.6 | 265 | 151 |
| W.VA..... | .5 | .6 | 46 | 53 | 3.4 | 3.7 | 318 | 345 |
| N.C..... | .1 | .1 | 10 | 11 | .4 | .5 | 39 | 51 |
| S.C..... | .1 | -- | 12 | -- | 1.5 | .3 | 138 | 29 |
| GA..... | -- | -- | -- | -- | .3 | .2 | 25 | 17 |
| FLA..... | .1 | .1 | 7 | 8 | .2 | .6 | 17 | 45 |
| KY..... | 32.0 | 22.0 | 2,880 | 2,068 | 103.0 | 78.2 | 9,690 | 7,709 |
| TENN..... | 9.4 | 12.8 | 799 | 1,203 | 31.7 | 42.5 | 2,781 | 3,991 |
| ALA..... | .1 | .1 | 10 | 10 | .8 | .9 | 76 | 92 |
| MISS..... | .1 | -- | 8 | -- | .3 | .2 | 28 | 20 |
| ARK..... | .1 | -- | 10 | -- | .2 | .1 | 19 | 10 |
| LA..... | .2 | .2 | 16 | 15 | 1.2 | 1.1 | 95 | 95 |
| OKLA..... | .3 | .1 | 34 | 11 | 2.8 | 2.1 | 283 | 229 |
| TEXAS..... | 185.0 | 192.0 | 15,540 | 16,512 | 1,048.0 | 1,046.5 | 90,233 | 92,695 |
| MONT..... | .6 | .6 | 58 | 56 | 4.2 | 3.1 | 414 | 304 |
| IDAHO..... | 11.9 | 1.4 | 1,202 | 146 | 26.4 | 7.2 | 2,799 | 750 |
| WYO..... | .3 | .2 | 32 | 22 | 16.5 | 1.4 | 1,720 | 157 |
| COLO..... | 123.0 | 87.0 | 11,931 | 8,352 | 1,018.0 | 975.5 | 104,994 | 99,986 |
| N.MEX..... | 3.0 | 3.4 | 306 | 330 | 23.0 | 22.0 | 2,338 | 2,267 |
| ARIZ..... | 1.4 | 1.2 | 136 | 127 | 15.2 | 9.8 | 1,560 | 1,136 |
| UTAH..... | 91.0 | 82.5 | 9,191 | 8,250 | 327.0 | 418.5 | 33,408 | 43,028 |
| NEV..... | .7 | .4 | 70 | 41 | 4.3 | 2.1 | 441 | 212 |
| WASH..... | 20.2 | 28.5 | 1,959 | 2,793 | 89.9 | 95.4 | 9,305 | 9,870 |
| OREG..... | 36.0 | 33.5 | 3,420 | 3,082 | 131.1 | 115.3 | 12,858 | 11,276 |
| CALIF..... | 208.0 | 197.0 | 20,592 | 19,897 | 1,429.0 | 1,341.0 | 146,983 | 137,701 |
| 48 ST..... | 1,384.0 | 1,265.5 | 130,684 | 119,559 | 8,922.4 | 8,469.5 | 880,791 | 841,353 |

1/ INCLUDES SLAUGHTER UNDER FEDERAL INSPECTION AND OTHER COMMERCIAL SLAUGHTER, EXCLUDES FARM SLAUGHTER.

2/ NEW ENGLAND INCLUDES MAINE, NEW HAMPSHIRE, VERMONT, MASSACHUSETTS, RHODE ISLAND AND CONNECTICUT.

LIVESTOCK SLAUGHTER, AVERAGE LIVE WEIGHT PER HEAD,
JULY 1963 AND 1964 1/

| STATE 2/ | CATTLE | | CALVES | | HOGS | | SHEEP AND LAMBS | |
|-------------|--------|--------|--------|--------|--------|--------|-----------------|--------|
| | 1963 | 1964 | 1963 | 1964 | 1963 | 1964 | 1963 | 1964 |
| | POUNDS | POUNDS | POUNDS | POUNDS | POUNDS | POUNDS | POUNDS | POUNDS |
| NEW ENG.... | 984 | 1,027 | 99 | 100 | 234 | 230 | 86 | 82 |
| N.Y..... | 1,103 | 1,069 | 105 | 128 | 221 | 222 | 90 | 94 |
| N.J..... | 1,197 | 1,253 | 195 | 215 | 202 | 213 | 91 | 89 |
| PA..... | 1,081 | 1,062 | 137 | 140 | 224 | 229 | 83 | 81 |
| OHIO..... | 988 | 962 | 200 | 194 | 220 | 226 | 85 | 85 |
| IND..... | 994 | 1,014 | 228 | 200 | 251 | 255 | 102 | 96 |
| ILL..... | 1,040 | 1,028 | 184 | 154 | 263 | 259 | 92 | 98 |
| MICH..... | 1,059 | 1,032 | 186 | 156 | 227 | 235 | 102 | 101 |
| WIS..... | 1,073 | 1,061 | 131 | 132 | 245 | 247 | 89 | 94 |
| MINN..... | 1,068 | 1,057 | 203 | 226 | 267 | 269 | 97 | 96 |
| IOWA..... | 1,085 | 1,066 | 190 | 190 | 253 | 253 | 96 | 94 |
| MO..... | 1,025 | 1,001 | 283 | 283 | 261 | 260 | 91 | 91 |
| N.DAK..... | 1,071 | 1,034 | 350 | -- | 242 | 261 | -- | 100 |
| S.DAK..... | 1,102 | 1,083 | 300 | 300 | 278 | 287 | 102 | 100 |
| NEBR..... | 1,039 | 1,048 | 361 | 423 | 266 | 270 | 98 | 97 |
| KANS..... | 1,021 | 1,008 | 408 | 418 | 248 | 258 | 91 | 91 |
| DEL.-MD... | 1,065 | 1,026 | 162 | 177 | 209 | 212 | 93 | 91 |
| VA..... | 1,034 | 1,017 | 243 | 245 | 220 | 218 | 88 | 91 |
| W.VA..... | 973 | 973 | 207 | 210 | 235 | 237 | 92 | 89 |
| N.C..... | 896 | 907 | 212 | 221 | 217 | 221 | 100 | 110 |
| S.C..... | 860 | 829 | 302 | 310 | 227 | 233 | 122 | -- |
| GA..... | 821 | 817 | 406 | 412 | 209 | 204 | -- | -- |
| FLA..... | 944 | 910 | 289 | 274 | 202 | 215 | 73 | 75 |
| KY..... | 910 | 898 | 216 | 235 | 218 | 228 | 90 | 94 |
| TENN..... | 919 | 884 | 250 | 254 | 230 | 240 | 85 | 94 |
| ALA..... | 866 | 854 | 398 | 447 | 212 | 219 | 96 | 98 |
| MISS..... | 848 | 813 | 476 | 453 | 221 | 224 | 81 | -- |
| ARK..... | 833 | 823 | 490 | 347 | 224 | 229 | 100 | -- |
| LA..... | 814 | 783 | 438 | 438 | 211 | 211 | 80 | 73 |
| OKLA..... | 893 | 866 | 512 | 515 | 248 | 246 | 115 | 111 |
| TEXAS..... | 907 | 871 | 518 | 529 | 231 | 239 | 84 | 86 |
| MONT..... | 998 | 979 | 343 | 290 | 224 | 225 | 97 | 94 |
| IDAHO..... | 1,019 | 1,013 | 280 | 285 | 220 | 218 | 101 | 104 |
| WYO..... | 1,040 | 976 | -- | -- | 228 | 231 | 108 | 109 |
| COLO..... | 1,073 | 1,058 | 408 | 410 | 223 | 230 | 97 | 96 |
| N.MEX..... | 943 | 943 | -- | -- | 224 | 234 | 102 | 97 |
| ARIZ..... | 876 | 870 | 457 | 485 | 227 | 230 | 97 | 106 |
| UTAH..... | 994 | 1,019 | 351 | 332 | 226 | 228 | 101 | 100 |
| NEV..... | 1,006 | 1,023 | 388 | 368 | 220 | 216 | 100 | 103 |
| WASH..... | 1,028 | 1,023 | 267 | 321 | 222 | 225 | 97 | 98 |
| OREG..... | 1,010 | 982 | 308 | 334 | 222 | 225 | 95 | 92 |
| CALIF..... | 1,023 | 1,027 | 262 | 238 | 223 | 236 | 99 | 101 |
| 48 ST..... | 1,020 | 1,005 | 234 | 246 | 243 | 245 | 94 | 94 |

1/ INCLUDES SLAUGHTER UNDER FEDERAL INSPECTION AND OTHER COMMERCIAL SLAUGHTER, EXCLUDES FARM SLAUGHTER.

2/ NEW ENGLAND INCLUDES MAINE, NEW HAMPSHIRE, VERMONT, MASSACHUSETTS, RHODE ISLAND AND CONNECTICUT.

UNITED STATES DEPARTMENT OF AGRICULTURE
 STATISTICAL REPORTING SERVICE
 WASHINGTON, D.C. 20250

POSTAGE AND FEES PAID
 U. S. DEPARTMENT OF AGRICULTURE

OFFICIAL BUSINESS

PRODUCTION OF PORK SAME AS JULY 1963

Pork production during July was 851 million pounds, about the same as July 1963 but 2 percent less than June 1964. The hog kill for July was 5,781,800 head, 2 percent less than a year earlier and a month earlier. The average live weight of hogs slaughtered during the month was 245 pounds per head, 2 pounds heavier than July last year but 2 pounds lighter than last month. Lard rendered per 100 pounds of live weight of hogs was 12.1 pounds this July compared with 12.2 pounds in July 1963 and 12.6 pounds in June 1964.

LAMB AND MUTTON OUTPUT DOWN 9 PERCENT FROM LAST YEAR

There were 58 million pounds of lamb and mutton produced during July, down 9 percent from a year earlier, but 5 percent more than a month earlier. The number of sheep and lambs slaughtered during July was 1,265,500 head, 9 percent less than July 1963, but 5 percent more than June 1964. Sheep and lambs slaughtered during the month averaged 94 pounds per head live weight, the same as a year earlier and the previous month.

JULY POULTRY SLAUGHTER 1 PERCENT LESS THAN A YEAR EARLIER

Production of poultry meat during July was 635 million pounds, ready-to-cook basis. This was 1 percent less than July last year but 4 percent more than June 1964.

HAWAII COMMERCIAL SLAUGHTER, JULY 1963 and 1964

| Species | Number | | Average | | Total | |
|---------|-------------|------|-------------|------|--------------|-------|
| | slaughtered | | live weight | | live weight | |
| | 1963 | 1964 | 1963 | 1964 | 1963 | 1964 |
| | 1,000 head | | Pounds | | 1,000 pounds | |
| Cattle | 4.7 | 4.1 | 962 | 942 | 4,521 | 3,862 |
| Hogs | 5.4 | 5.7 | 176 | 179 | 950 | 1,020 |

This report is made possible through the cooperative efforts of the Meat Inspection Division, Agricultural Research Service, and the Statistical Reporting Service.