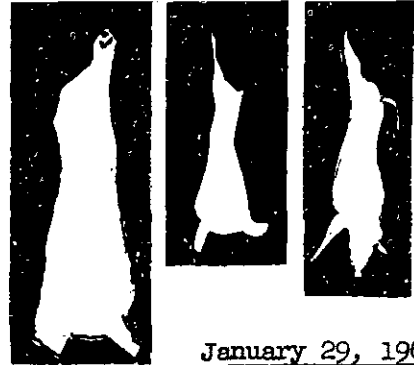


LIVESTOCK SLAUGHTER



DECEMBER 1964

January 29, 1965

DECEMBER RED MEAT PRODUCTION 9 PERCENT GREATER THAN A YEAR EARLIER

Commercial production of red meat during December in the 48 States totaled 2,813 million pounds, up 9 percent from a year earlier and 4 percent above November 1964, according to the Crop Reporting Board. Commercial meat production includes slaughter in Federally inspected and other commercial plants but excludes farm slaughter.

TOTAL RED MEAT OUTPUT DURING 1964 UP 7 PERCENT FROM 1963

Red meat production in 1964 amounted to 31,647 million pounds, 7 percent greater than 1963 production. Of the 1964 volume, 18,018 million pounds were beef, up 12 percent from the previous year; 920 million pounds were veal, up 9 percent; 12,005 million pounds were pork, up 1 percent; and 704 million pounds were lamb and mutton, down 7 percent. Lard production totaled 2,384 million pounds in 1964 compared with 2,373 million pounds in 1963.

The number of cattle slaughtered during 1964 was 30,777,600 head, 13 percent more than the total killed in 1963. The average live weight of slaughter cattle in 1964 was 1,020 pounds, 4 pounds less than the average for 1963. There were 7,227,200 head of calves slaughtered in 1964--6 percent greater than in 1963. The average live weight of calves was 228 pounds, 8 pounds heavier than in 1963. The number of hogs slaughtered, at 82,902,200 head, was 1 percent less than in 1963. The average live weight of hogs during 1964 was 241 pounds compared with 238 pounds in 1963. Sheep and lambs slaughtered in 1964 totaled 14,600,500 head, 8 percent below 1963. The average live weight of sheep and lambs was 99 pounds in 1964, 1 pound heavier than in 1963.

DECEMBER BEEF PRODUCTION UP 18 PERCENT FROM PREVIOUS YEAR

Beef production during December was 1,559 million pounds, up 18 percent from December 1963 and 7 percent above November 1964. The number of cattle slaughtered during December was 2,715,100 head, 21 percent greater than a year earlier and 6 percent more than the previous month. The average live weight of cattle slaughtered in December was 1,020 pounds per head, 15 pounds less than December 1963, but 14 pounds heavier than in November 1964.

VEAL PRODUCTION DURING DECEMBER UP 15 PERCENT FROM A YEAR EARLIER

There were 77 million pounds of veal produced during December, 15 percent more than a year earlier, but 6 percent less than a month earlier. The 660,800 head of calves slaughtered during December was 12 percent above December 1963 and about the same as November 1964. Calves slaughtered during December averaged 212 pounds per head live weight, 7 pounds heavier than the previous December and 12 pounds less than November 1964.

(Continued on page 8)

December commercial meat and lard production, 48 States, with comparisons 1/

Month and year	Beef	Veal	Fork 2/	Lamb and mutton	Total red meat 2/	Poultry 3/	Lard 4/
	Million pounds	Million pounds	Million pounds	Million pounds	Million pounds	Million pounds	Million pounds
December 1963	1,316	67	1,130	60	2,573	636	220
November 1964	1,453	82	1,107	55	2,697	725	209
December 1964	1,559	77	1,118	59	2,813	640	216
Jan.-Dec. 1963 5/	16,049	847	11,863	757	29,516	7,249	2,373
Jan.-Dec. 1964 5/	18,018	920	12,005	704	31,647	7,541	2,384

1/ Excludes farm slaughter. 2/ Excludes lard and rendered pork fat. 3/ Chicken and turkey meat, ready-to-cook basis, excludes slaughter on farms for home use and non-farm production. Estimates of monthly poultry meat production based on available indications of marketings developed from information on inventories, number raised, intentions to raise and market poultry as well as data on chick placements and current monthly marketings. 4/ Includes rendered pork fat. 5/ Accumulated totals based on unrounded data.

December commercial livestock slaughter, 48 States, with comparisons 1/

Species, month and year	Number slaughtered			Average	Total
	Federally inspected	Other commercial	Total	live weight	live weight
	1,000 head	1,000 head	1,000 head	Pounds	Million pounds
CATTLE					
December 1963	1,807.8	427.1	2,234.9	1,035	2,313
November 1964	2,111.4	458.5	2,569.9	1,006	2,586
December 1964	2,253.8	461.3	2,715.1	1,020	2,770
Jan.-Dec. 1963 2/	21,661.7	5,570.0	27,231.7	1,024	27,891
Jan.-Dec. 1964 2/	25,133.0	5,644.6	30,777.6	1,020	31,405
CALVES					
December 1963	400.5	186.9	587.4	205	121
November 1964	442.5	220.4	662.9	224	149
December 1964	449.4	211.4	660.8	212	140
Jan.-Dec. 1963 2/	4,534.9	2,298.0	6,832.9	220	1,503
Jan.-Dec. 1964 2/	4,819.9	2,407.3	7,227.2	228	1,650
HOGS					
December 1963	6,695.4	1,038.0	7,733.4	242	1,873
November 1964	6,545.8	946.2	7,492.0	243	1,824
December 1964	6,647.9	1,034.9	7,682.8	242	1,856
Jan.-Dec. 1963 2/	71,576.6	11,746.9	83,323.5	238	19,827
Jan.-Dec. 1964 2/	71,666.7	11,235.5	82,902.2	241	19,975
SHEEP AND LAMBS					
December 1963	1,105.1	131.8	1,236.9	99	122
November 1964	997.2	129.4	1,126.6	100	113
December 1964	1,053.1	126.7	1,179.8	101	120
Jan.-Dec. 1963 2/	13,955.1	1,866.8	15,821.9	98	1,547
Jan.-Dec. 1964 2/	12,947.3	1,653.2	14,600.5	99	1,441

1/ Excludes farm slaughter.

2/ Accumulated totals based on unrounded head and live weight.

COMMERCIAL CATTLE SLAUGHTER 1/

STATE 2/	DECEMBER				JANUARY-DECEMBER			
	NUMBER SLAUGHTERED		TOTAL LIVE WEIGHT		NUMBER SLAUGHTERED		TOTAL LIVE WEIGHT	
	1963	1964	1963	1964	1963	1964	1963	1964
	1,000 HEAD	1,000 HEAD	1,000 POUNDS	1,000 POUNDS	1,000 HEAD	1,000 HEAD	1,000 POUNDS	1,000 POUNDS
NEW ENG...	20.2	23.1	20,309	24,941	233.1	226.9	228,469	234,805
N.Y.....	36.0	38.0	40,608	41,534	444.0	428.5	490,447	471,176
N.J.....	39.0	38.0	48,711	47,804	446.5	412.5	548,229	514,385
PA.....	73.0	82.5	79,570	88,935	900.5	941.0	977,270	1,016,364
OHIO.....	93.5	106.0	93,968	103,350	1,189.0	1,251.5	1,175,218	1,231,187
IND.....	55.0	70.5	56,595	70,500	694.5	799.0	707,704	816,004
ILL.....	102.0	130.0	105,774	136,760	1,246.0	1,459.0	1,303,550	1,520,241
MICH.....	55.0	63.0	58,685	66,087	740.5	744.5	785,993	779,455
WIS.....	82.5	108.0	90,090	119,016	964.0	1,075.0	1,051,581	1,184,109
MINN.....	128.0	159.0	139,008	166,950	1,453.0	1,696.0	1,563,329	1,816,208
IOWA.....	286.0	334.0	311,740	358,382	3,248.0	3,630.0	3,516,518	3,907,067
MO.....	95.5	103.0	100,084	104,648	1,146.5	1,215.5	1,183,495	1,240,063
N.DAK.....	10.9	14.1	11,957	14,918	123.8	153.9	134,144	164,103
S.DAK.....	44.5	50.5	48,683	54,641	491.0	560.5	526,658	609,935
NEBR.....	216.0	253.0	230,472	268,939	2,341.0	2,802.0	2,449,393	2,973,002
KANS.....	102.0	123.0	102,918	124,845	1,232.0	1,419.0	1,251,354	1,445,987
DEL.-MD...	9.8	10.7	10,597	11,566	124.3	135.4	134,312	146,308
VA.....	14.4	18.0	14,371	18,126	197.0	207.2	198,683	211,609
W.VA.....	4.7	5.1	4,836	5,069	65.6	65.4	65,490	64,795
N.C.....	11.8	14.7	11,045	13,671	163.0	172.7	150,736	160,057
S.C.....	5.7	9.0	4,794	7,353	88.7	101.4	75,923	82,953
GA.....	22.1	32.0	16,995	25,344	326.0	374.3	265,364	301,524
FLA.....	24.3	32.0	22,891	29,056	314.3	363.0	296,376	332,216
KY.....	13.9	18.1	13,427	17,032	175.7	206.4	163,859	190,367
TENN.....	33.5	43.0	31,289	38,356	440.5	537.0	405,041	482,211
ALA.....	16.3	20.6	14,377	17,572	219.5	241.3	191,933	209,069
MISS.....	23.3	36.0	19,222	28,584	320.9	395.0	270,741	322,305
ARK.....	9.2	10.9	7,691	9,091	130.2	146.6	109,544	121,341
LA.....	9.7	11.2	7,585	8,322	114.0	132.2	91,578	102,220
OKLA.....	29.5	41.0	26,550	35,629	360.4	478.0	318,496	419,313
TEXAS.....	128.0	187.0	113,792	164,747	1,723.0	2,154.0	1,533,924	1,914,740
MONT.....	9.7	17.0	10,117	17,323	114.0	160.5	115,892	163,370
IDAHO.....	17.1	25.0	18,109	25,675	227.8	262.9	237,250	271,886
WYO.....	1.2	1.6	1,216	1,646	19.0	26.5	19,177	26,622
COLO.....	82.5	109.0	85,222	111,398	1,171.5	1,322.0	1,225,450	1,377,605
N.MEX.....	12.8	15.6	12,467	14,976	160.7	186.0	154,013	177,643
ARIZ.....	16.5	20.1	14,998	18,512	204.2	227.4	181,028	203,716
UTAH.....	18.8	26.0	19,195	26,650	245.0	280.7	251,647	288,984
NEV.....	1.5	1.6	1,504	1,605	21.2	23.1	21,593	23,696
WASH.....	38.5	43.5	39,655	44,196	475.0	535.5	489,663	555,762
OREG.....	20.0	21.7	20,480	21,874	256.8	271.3	259,284	274,238
CALIF.....	221.0	249.0	231,166	264,687	2,680.0	2,957.0	2,761,135	3,056,384
48 ST.....	2,234.9		2,312,763		27,231.7		27,891,484	
		2,715.1		2,770,310		30,777.6		31,405,025

1/ INCLUDES SLAUGHTER UNDER FEDERAL INSPECTION AND OTHER COMMERCIAL SLAUGHTER, EXCLUDES FARM SLAUGHTER.

2/ NEW ENGLAND INCLUDES MAINE, NEW HAMPSHIRE, VERMONT, MASSACHUSETTS, RHODE ISLAND AND CONNECTICUT.

COMMERCIAL CALF SLAUGHTER 1/

STATE 2/	DECEMBER				JANUARY-DECEMBER			
	NUMBER SLAUGHTERED		TOTAL LIVE WEIGHT		NUMBER SLAUGHTERED		TOTAL LIVE WEIGHT	
	1963	1964	1963	1964	1963	1964	1963	1964
	1,000 HEAD	1,000 HEAD	1,000 POUNDS	1,000 POUNDS	1,000 HEAD	1,000 HEAD	1,000 POUNDS	1,000 POUNDS
NEW ENG...	29.7	28.6	2,939	2,823	363.8	342.2	34,916	33,171
N.Y.....	85.5	88.5	9,918	11,062	970.5	986.5	107,035	123,741
N.J.....	27.0	31.0	5,346	6,789	344.3	365.7	67,912	76,041
PA.....	53.0	58.0	6,360	7,192	667.0	656.5	85,243	85,827
OHIO.....	10.2	8.9	1,897	1,682	134.8	122.0	26,011	23,366
IND.....	8.4	5.7	1,957	1,077	111.7	88.5	25,679	18,300
ILL.....	27.0	32.0	3,645	5,184	311.5	344.3	50,384	55,847
MICH.....	31.0	24.7	5,518	3,606	350.0	269.8	61,889	42,002
WIS.....	86.5	95.5	9,948	10,696	817.5	803.0	99,583	98,455
MINN.....	24.8	30.5	4,315	5,185	196.5	230.3	35,781	43,928
IOWA.....	37.0	42.0	6,253	6,678	347.2	377.1	62,179	64,752
MO.....	6.5	10.3	1,814	2,977	60.9	119.2	17,064	35,393
N.DAK.....	--	.1	--	35	.3	.3	100	107
S.DAK.....	--	--	--	--	.1	.1	30	30
NEBR.....	.6	1.1	251	538	7.8	11.9	3,118	5,387
KANS.....	4.4	4.1	1,751	1,492	53.8	55.3	22,972	22,642
DEL.-MD...	4.2	4.2	686	705	53.8	49.6	8,657	8,500
VA.....	12.0	16.7	3,000	4,375	198.6	221.2	50,547	55,618
W.VA.....	.5	.6	101	118	10.0	8.7	1,938	1,788
N.C.....	1.0	1.4	220	339	21.0	19.6	4,526	4,437
S.C.....	6.5	7.1	2,327	2,556	89.2	107.2	29,653	36,924
GA.....	3.0	2.6	1,317	1,136	53.8	43.9	23,334	19,507
FLA.....	13.1	19.0	3,498	4,769	136.3	209.2	38,659	60,309
KY.....	2.3	2.7	520	602	26.3	24.7	5,861	5,748
TENN.....	12.0	18.2	3,276	4,495	153.2	236.1	41,045	63,395
ALA.....	2.8	4.1	1,240	1,906	33.8	55.2	14,902	25,204
MISS.....	5.3	9.3	2,539	4,427	82.8	116.5	38,860	54,055
ARK.....	.8	1.6	413	645	13.2	22.7	6,128	8,571
LA.....	16.2	19.8	7,209	8,514	208.7	257.8	92,205	113,047
OKLA.....	3.9	3.7	1,966	1,917	62.2	49.4	31,937	26,124
TEXAS.....	42.5	51.0	22,525	27,489	592.5	611.0	318,778	330,976
MONT.....	.1	.2	32	53	1.5	2.1	507	636
IDAHO.....	.3	.3	81	59	3.6	3.0	1,058	735
WYO.....	--	--	--	--	.3	.5	87	143
COLO.....	.4	.3	168	127	4.8	4.6	2,034	2,004
N.MEX.....	.1	.1	47	43	1.2	.8	533	365
ARIZ.....	.5	.6	223	281	7.9	6.5	3,601	3,033
UTAH.....	.6	.6	222	220	7.8	7.2	2,786	2,587
NEV.....	.1	.2	37	78	1.6	2.5	607	889
WASH.....	1.2	2.2	373	748	18.5	22.3	5,575	7,443
OREG.....	1.6	1.8	538	601	20.4	23.9	6,512	7,998
CALIF.....	24.8	31.5	6,200	6,584	292.2	348.3	72,828	80,958
48 ST.....	587.4	660.8	120,670	139,803	6,832.9	7,227.2	1,503,054	1,649,983

1/ INCLUDES SLAUGHTER UNDER FEDERAL INSPECTION AND OTHER COMMERCIAL SLAUGHTER, EXCLUDES FARM SLAUGHTER.

2/ NEW ENGLAND INCLUDES MAINE, NEW HAMPSHIRE, VERMONT, MASSACHUSETTS, RHODE ISLAND AND CONNECTICUT.

COMMERCIAL HOG SLAUGHTER 1/

STATE 2/	DECEMBER				JANUARY-DECEMBER			
	NUMBER SLAUGHTERED		TOTAL LIVE WEIGHT		NUMBER SLAUGHTERED		TOTAL LIVE WEIGHT	
	1963	1964	1963	1964	1963	1964	1963	1964
	1,000 HEAD	1,000 HEAD	1,000 POUNDS	1,000 POUNDS	1,000 HEAD	1,000 HEAD	1,000 POUNDS	1,000 POUNDS
NEW ENG...	61.9	51.9	14,553	11,754	654.2	572.5	150,287	130,644
N.Y.....	98.0	104.0	22,050	23,296	1,111.0	1,044.5	242,117	232,511
N.J.....	120.0	149.0	24,720	30,545	1,394.0	1,410.0	289,920	296,350
PA.....	308.0	288.0	69,916	66,528	3,230.0	3,169.0	721,952	721,218
OHIO.....	410.0	443.0	93,070	99,675	4,535.0	4,768.0	1,007,457	1,070,910
IND.....	428.0	405.0	110,424	102,870	4,580.0	4,617.0	1,138,044	1,142,888
ILL.....	477.0	501.0	116,865	127,755	6,219.0	5,536.0	1,545,639	1,400,382
MICH.....	181.0	179.0	41,268	41,528	1,998.0	2,070.0	451,630	476,438
WIS.....	338.0	328.0	80,444	77,080	3,381.0	3,482.0	798,344	825,702
MINN.....	532.0	594.0	134,596	147,906	5,820.0	5,792.0	1,464,812	1,467,660
IOWA.....	1,580.0	1,625.0	395,000	404,625	15,843.0	16,571.0	3,874,845	4,093,324
MO.....	370.0	325.0	94,350	81,900	3,846.0	3,697.0	968,693	932,739
N.DAK.....	1.5	1.6	362	366	17.0	16.7	3,867	3,954
S.DAK.....	260.0	251.0	68,120	63,754	2,654.0	2,588.0	687,354	681,150
NEBR.....	443.0	405.0	114,737	104,895	4,605.0	4,501.0	1,172,894	1,168,947
KANS.....	293.0	190.0	74,422	46,360	2,989.0	2,584.0	732,438	643,854
DEL.-MD...	54.8	59.3	11,641	12,412	629.9	663.8	132,460	141,033
VA.....	201.0	215.0	45,024	48,805	2,324.0	2,411.0	508,814	536,318
W.VA.....	9.8	9.7	2,303	2,338	119.7	106.0	28,446	25,302
N.C.....	104.0	113.0	23,192	25,312	1,265.5	1,302.0	280,444	292,587
S.C.....	42.5	43.5	9,520	9,962	456.5	466.0	102,458	108,123
GA.....	170.0	161.0	36,040	35,098	1,710.0	1,733.0	357,735	369,643
FLA.....	56.0	57.5	11,480	11,730	544.5	503.5	110,146	107,138
KY.....	135.0	146.0	31,185	33,580	1,532.5	1,626.0	341,783	369,491
TENN.....	233.0	222.0	56,153	53,724	2,658.0	2,648.0	619,623	632,466
ALA.....	81.0	78.5	17,820	17,741	893.5	867.0	194,732	192,091
MISS.....	72.5	71.5	16,022	16,445	815.5	842.0	180,064	191,827
ARK.....	28.5	30.0	6,669	7,110	327.9	333.5	75,448	78,281
LA.....	20.6	19.1	4,202	3,973	193.1	189.9	40,541	40,133
OKLA.....	59.0	62.0	15,517	16,368	663.5	675.5	164,468	173,148
TEXAS.....	165.0	170.0	40,425	41,650	1,829.0	1,717.0	428,852	415,497
MONT.....	24.1	22.5	5,591	5,062	299.5	275.5	67,678	62,104
IDAHO.....	11.4	10.7	2,519	2,375	135.6	131.5	29,315	28,797
WYO.....	3.2	3.1	746	704	36.3	36.6	8,224	8,490
COLO.....	61.0	58.5	14,274	13,455	679.0	638.0	154,677	146,157
N.MEX.....	8.1	9.6	1,847	2,218	104.0	102.9	23,595	23,811
ARIZ.....	13.7	11.7	3,137	2,691	138.7	134.6	31,646	31,098
UTAH.....	25.0	21.9	5,650	4,928	278.3	270.8	62,738	61,060
NEV.....	.3	.2	63	41	4.8	3.9	1,068	859
WASH.....	68.5	56.0	15,412	12,488	772.0	712.5	172,236	159,927
OREG.....	35.0	29.0	7,980	6,467	408.0	363.0	90,488	81,295
CALIF.....	149.0	161.0	33,823	38,318	1,628.0	1,730.0	369,152	409,661
48 ST.....	7,733.4		1,873,132		83,323.5		19,827,124	
		7,682.8		1,855,832		82,902.2		19,975,008

1/ INCLUDES SLAUGHTER UNDER FEDERAL INSPECTION AND OTHER COMMERCIAL SLAUGHTER, EXCLUDES FARM SLAUGHTER.
 2/ NEW ENGLAND INCLUDES MAINE, NEW HAMPSHIRE, VERMONT, MASSACHUSETTS, RHODE ISLAND AND CONNECTICUT.

COMMERCIAL SHEEP AND LAMB SLAUGHTER 1/

STATE 2/	DECEMBER				JANUARY-DECEMBER			
	NUMBER SLAUGHTERED		TOTAL LIVE WEIGHT		NUMBER SLAUGHTERED		TOTAL LIVE WEIGHT	
	1963	1964	1963	1964	1963	1964	1963	1964
	1,000 HEAD	1,000 HEAD	1,000 POUNDS	1,000 POUNDS	1,000 HEAD	1,000 HEAD	1,000 POUNDS	1,000 POUNDS
NEW ENG...	1.5	1.6	133	142	17.4	19.0	1,494	1,584
N.Y.....	56.0	53.0	4,984	5,300	623.0	584.5	55,865	57,262
N.J.....	98.5	98.5	9,456	9,653	1,145.0	1,108.5	108,883	105,704
PA.....	13.7	20.4	1,192	1,897	248.2	202.2	21,780	17,684
OHIO.....	10.0	8.9	880	810	139.1	125.3	12,044	10,961
IND.....	10.4	8.9	1,102	863	135.0	108.6	13,782	10,676
ILL.....	54.5	77.0	5,341	7,854	732.5	773.5	71,112	77,072
MICH.....	59.5	34.5	6,188	3,622	736.0	423.6	76,431	44,073
WIS.....	2.0	1.9	182	186	25.3	23.7	2,274	2,220
MINN.....	89.5	89.5	8,860	9,218	820.0	875.5	81,355	88,213
IOWA.....	94.5	96.0	9,450	9,696	1,181.5	976.0	117,567	96,827
MO.....	39.5	33.5	3,910	3,316	444.5	461.5	42,830	44,833
N.DAK.....	12.4	13.3	1,277	1,396	94.2	111.5	9,667	11,334
S.DAK.....	32.5	30.0	3,315	3,120	387.5	370.5	40,211	38,906
NEBR.....	92.0	80.0	9,476	8,240	1,046.0	1,033.0	107,293	106,223
KANS.....	23.0	20.6	2,254	1,998	294.4	274.0	28,315	26,325
DEL.-MD...	5.2	5.3	499	473	74.7	66.7	6,951	6,142
VA.....	.3	.2	29	20	5.2	2.7	474	254
W.VA.....	.4	.4	36	38	5.8	6.3	532	587
N.C.....	--	.1	--	8	1.0	.8	102	79
S.C.....	--	--	--	--	1.8	.5	167	49
GA.....	--	--	--	--	.5	.3	41	27
FLA.....	.1	.1	6	7	.4	1.2	31	90
KY.....	9.9	20.8	950	2,142	174.2	190.8	16,278	18,655
TENN.....	2.3	4.4	193	427	49.3	74.6	4,259	7,154
ALA.....	--	.1	--	9	1.3	1.5	123	149
MISS.....	--	--	--	--	.5	.3	48	30
ARK.....	--	--	--	--	.2	.1	19	10
LA.....	.1	.1	9	7	2.0	1.6	159	133
OKLA.....	.2	.1	22	11	5.2	2.7	531	291
TEXAS.....	139.0	91.0	12,232	8,372	1,938.0	1,675.5	169,261	148,151
MONT.....	.6	.3	60	33	7.7	6.2	758	614
IDAHO.....	2.4	1.0	278	110	60.0	13.1	6,406	1,374
WYO.....	.2	.3	24	33	17.8	2.8	1,860	308
COLO.....	123.0	148.0	12,423	15,244	1,879.0	1,712.5	188,206	171,512
N.MEX.....	2.8	2.6	297	263	37.4	36.6	3,787	3,701
ARIZ.....	.6	.8	70	82	19.4	13.8	2,024	1,558
UTAH.....	75.5	70.0	7,852	7,420	764.0	794.5	77,735	81,432
NEV.....	.3	.3	32	31	7.0	4.0	714	411
WASH.....	8.9	9.2	917	1,040	161.6	175.7	16,702	18,375
OREG.....	10.6	9.1	1,081	919	217.3	190.8	21,374	18,597
CALIF.....	165.0	148.0	17,160	15,688	2,321.0	2,154.0	237,836	221,441
48 ST.....	1,236.9	1,179.8	122,170	119,688	15,821.9	14,600.5	1,547,281	1,441,021

1/ INCLUDES SLAUGHTER UNDER FEDERAL INSPECTION AND OTHER COMMERCIAL SLAUGHTER, EXCLUDES FARM SLAUGHTER.

2/ NEW ENGLAND INCLUDES MAINE, NEW HAMPSHIRE, VERMONT, MASSACHUSETTS, RHODE ISLAND AND CONNECTICUT.

LIVESTOCK SLAUGHTER, AVERAGE LIVE WEIGHT PER HEAD,
DECEMBER 1963 AND 1964 1/

STATE 2/	CATTLE		CALVES		HOGS		SHEEP AND LAMBS	
	1963	1964	1963	1964	1963	1964	1963	1964
	POUNDS	POUNDS	POUNDS	POUNDS	POUNDS	POUNDS	POUNDS	POUNDS
NEW ENG...	1,005	1,080	99	99	235	226	89	89
N.Y.....	1,128	1,093	116	125	225	224	89	100
N.J.....	1,249	1,258	198	219	206	205	96	98
PA.....	1,090	1,078	120	124	227	231	87	93
OHIO.....	1,005	975	186	189	227	225	88	91
IND.....	1,029	1,000	233	189	258	254	106	97
ILL.....	1,037	1,052	135	162	245	255	98	102
MICH.....	1,067	1,049	178	146	228	232	104	105
WIS.....	1,092	1,102	115	112	238	235	91	98
MINN.....	1,086	1,050	174	170	253	249	99	103
IOWA.....	1,090	1,073	169	159	250	249	100	101
MO.....	1,048	1,016	279	289	255	252	99	99
N.DAK.....	1,097	1,058	--	350	241	229	103	105
S.DAK.....	1,094	1,082	--	--	262	254	102	104
NEBR.....	1,067	1,063	419	489	259	259	103	103
KANS.....	1,009	1,015	398	364	254	244	98	97
DEL.-MD...	1,081	1,081	163	168	212	209	96	89
VA.....	998	1,007	250	262	224	227	96	98
W.VA.....	1,029	994	202	197	235	241	90	95
N.C.....	936	930	220	242	223	224	--	75
S.C.....	841	817	358	360	224	229	--	--
GA.....	769	792	439	437	212	218	--	--
FLA.....	942	908	267	251	205	204	57	67
KY.....	966	941	226	223	231	230	96	103
TENN.....	934	892	273	247	241	242	84	97
ALA.....	882	853	443	465	220	226	--	89
MISS.....	825	794	479	476	221	230	--	--
ARK.....	836	834	516	403	234	237	--	--
LA.....	782	743	445	430	204	208	90	73
OKLA.....	900	869	504	518	263	264	112	107
TEXAS.....	889	881	530	539	245	245	88	92
1 MONT.....	1,043	1,019	317	265	232	225	100	109
IDAHO.....	1,059	1,027	270	197	221	222	116	110
WYO.....	1,013	1,029	--	--	233	227	119	111
COLO.....	1,033	1,022	419	423	234	230	101	103
N.MEX.....	974	960	467	427	228	231	106	101
ARIZ.....	909	921	446	468	229	230	117	103
UTAH.....	1,021	1,025	370	367	226	225	104	106
NEV.....	1,003	1,003	374	388	211	205	107	104
WASH.....	1,030	1,016	311	340	225	223	103	113
OREG.....	1,024	1,008	336	334	228	223	102	101
CALIF.....	1,046	1,063	250	209	227	238	104	106
48 ST.....	1,035	1,020	205	212	242	242	99	101

1/ INCLUDES SLAUGHTER UNDER FEDERAL INSPECTION AND OTHER COMMERCIAL SLAUGHTER,
EXCLUDES FARM SLAUGHTER.

2/ NEW ENGLAND INCLUDES MAINE, NEW HAMPSHIRE, VERMONT, MASSACHUSETTS, RHODE ISLAND
AND CONNECTICUT.

OFFICIAL BUSINESS

(Continued from page 1)

PRODUCTION OF PORK 1 PERCENT LESS THAN DECEMBER 1963

Pork production during December totaled 1,118 million pounds, down 1 percent from December 1963, but 1 percent greater than November 1964. The hog kill during December was 7,682,800 head, 1 percent less than a year earlier, but 3 percent greater than the previous month. The average live weight of hogs slaughtered during the month was 242 pounds, unchanged from December 1963, but 1 pound less than the previous month. Lard rendered per 100 pounds of live weight of hogs during December was 11.7 pounds, the same as December 1963, but 0.3 pounds more than November 1964.

DECEMBER LAMB AND MUTTON OUTPUT DOWN 2 PERCENT FROM PREVIOUS YEAR

There were 59 million pounds of lamb and mutton produced during December, 2 percent less than a year earlier, but 7 percent more than a month earlier. The number of sheep and lambs slaughtered during December was 1,179,800 head, 5 percent less than December 1963, but 5 percent more than November 1964. Sheep and lambs slaughtered during December averaged 101 pounds, 2 pounds heavier than a year earlier and 1 pound more than the previous month.

DECEMBER POULTRY PRODUCTION UP 1 PERCENT

Production of poultry meat during December amounted to 640 million pounds, ready-to-cook basis. This was 1 percent greater than December 1963, but 12 percent less than November 1964.

HAWAII COMMERCIAL SLAUGHTER, DECEMBER 1963 and 1964

Species	Number Slaughtered		Average live weight		Total live weight	
	1963	1964	1963	1964	1963	1964
	1,000 head		Pounds		1,000 pounds	
Cattle	4.1	4.0	1,001	929	4,104	3,716
Hogs	7.1	7.9	173	175	1,228	1,382

This report is made possible through the cooperative efforts of the Meat Inspection Division, Agricultural Research Service, and the Statistical Reporting Service.