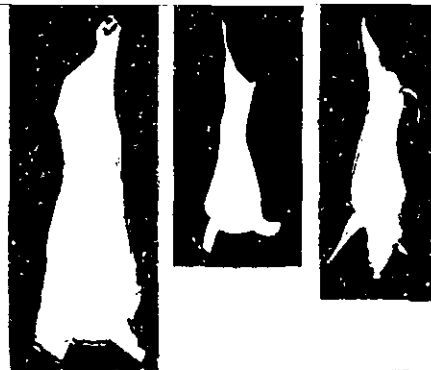


LIVESTOCK SLAUGHTER



DECEMBER 1966

January 30, 1967

DECEMBER RED MEAT PRODUCTION: Commercial production of red meat during December in the 48 States totaled 2,860 million pounds, according to the Crop Reporting Board. This was down slightly from the November total of 2,872 million pounds. Commercial meat production includes slaughter in Federally inspected and other commercial plants, but excludes animals slaughtered on farms or ranches.

TOTAL RED MEAT PRODUCTION DURING 1966: There were 32,095 million pounds of red meat produced during 1966, an increase of 5 percent from 1965. Of the 1966 total, 19,460 million pounds were beef, up 6 percent from a year earlier; 862 million pounds were veal, down 8 percent; 11,135 million pounds were pork, up 4 percent; and 638 million pounds were lamb and mutton, virtually the same as in 1965. Lard production during 1966 was 1,898 million pounds, down 4 percent from 1965.

The number of cattle slaughtered during 1966 was 4 percent greater than in 1965; calves were down 11 percent; hogs up slightly; and sheep and lambs down 2 percent.

BEEF PRODUCTION DURING DECEMBER 1966: Beef production during December was 1,638 million pounds, down less than 1 percent from November 1966. The average live weight of cattle slaughtered during the month was 1,035 pounds, up 14 pounds from November 1966 and 18 pounds more than December 1965. The total commercial cattle kill during December was 2,757,200 head, 2 percent less than November 1966. The December number of cattle slaughtered in Federally inspected plants was 2,256,900 head, 2 percent less than the number slaughtered in December last year.

VEAL PRODUCTION IN DECEMBER 1966: There were 64 million pounds of veal produced during December, 11 percent less than November 1966. Commercial calf slaughter during December totaled 535,600 head, 7 percent less than a month earlier. Federally inspected calf slaughter in December was 366,300 head, 15 percent less than December 1965.

DECEMBER PORK PRODUCTION: Pork production during December totaled 1,107 million pounds, virtually the same as in November 1966. The commercial hog kill during December totaled 7,259,300, 1 percent more than the preceding month. Hogs slaughtered in Federally inspected plants totaled 6,215,200 head, up 24 percent from December last year. Lard rendered per 100 pounds live weight was 10.4 pounds, the same as in November 1966, and compared with 11.1 pounds in December 1965.

(Continued on page 8)

December commercial meat and lard production, 48 States, with comparisons 1/

Month and year	Beef	Veal	Pork 2/	Lamb and mutton	Total red meat 2/	Poultry 3/	Lard 4/
	Million pounds	Million pounds	Million pounds	Million pounds	Million pounds	Million pounds	Million pounds
December 1965	1,585	72	863	51	2,571	695	157
November 1966 5/	1,647	72	1,103	50	2,872	888	182
December 1966 5/	1,638	64	1,107	51	2,860	790	184
Jan.-Dec. 1965 6/	18,325	936	10,736	639	30,636	7,998	1,980
Jan.-Dec. 1966 5/ 6/	19,460	862	11,135	638	32,095	8,811	1,898

1/ Excludes farm slaughter. 2/ Excludes lard and rendered pork fat. 3/ Chicken and turkey meat ready-to-cook basis, excludes slaughter on farms for home use and non-farm production. 4/ Includes rendered pork fat. 5/ Data for 1966 not comparable with previous year due to change in definition to include custom slaughtering in plants for farmers as part of the commercial meat production estimates beginning with January 1966. 6/ Accumulated totals based on unrounded data. 7/ Revised.

December commercial livestock slaughter, 48 States, with comparisons 1/

Species, month and year	Number slaughtered			Average live weight	Total live weight
	Federally inspected	Other commercial	Total		
	head	head	head	Pounds	Million pounds
CATTLE					
December 1965	2,314.3	465.2	2,779.5	1,017	2,828
November 1966 3/	2,284.9	534.8	2,819.7	1,021	2,879
December 1966 3/	2,256.9	500.3	2,757.2	1,035	2,855
Jan.-Dec. 1965 2/	26,613.8	5,733.4	32,347.2	999	32,316
Jan.-Dec. 1966 2/ 3/	27,318.6	6,350.2	33,668.8	1,011	34,031
CALVES					
December 1965	432.6	193.4	626.0	210	131
November 1966 3/	384.3	190.8	575.1	228	131
December 1966 3/	366.3	169.3	535.6	217	116
Jan.-Dec. 1965 2/	5,075.9	2,343.8	7,419.7	227	1,687
Jan.-Dec. 1966 2/ 3/	4,431.6	2,208.1	6,639.7	235	1,562
HOGS					
December 1965	5,009.6	804.5	5,814.1	243	1,411
November 1966 3/	6,200.1	972.6	7,172.7	244	1,754
December 1966 3/	6,215.2	1,044.1	7,259.3	244	1,774
Jan.-Dec. 1965 2/	63,707.7	10,075.8	73,783.5	238	17,583
Jan.-Dec. 1966 2/ 3/	63,728.8	10,269.1	73,997.9	242	17,902
SHEEP AND LAMBS					
December 1965	909.6	97.1	1,006.7	103	104
November 1966 3/	895.5	97.2	992.7	103	103
December 1966 3/	905.0	85.4	990.4	104	103
Jan.-Dec. 1965 2/	11,709.6	1,296.7	13,006.3	100	1,302
Jan.-Dec. 1966 2/ 3/	11,550.6	1,170.2	12,720.8	102	1,302

1/ Excludes farm slaughter. 2/ Accumulated totals based on unrounded data. Data for 1966 not comparable with previous year due to change in definition.

COMMERCIAL CATTLE SLAUGHTER 1/

STATE <u>2/</u>	DECEMBER				JANUARY-DECEMBER			
	NUMBER SLAUGHTERED		TOTAL LIVE WEIGHT		NUMBER SLAUGHTERED		TOTAL LIVE WEIGHT	
	1965	1966 <u>3/</u>	1965	1966 <u>3/</u>	1965	1966 <u>3/</u>	1965	1966 <u>3/</u>
	1,000 HEAD	1,000 HEAD	1,000 POUNDS	1,000 POUNDS	1,000 HEAD	1,000 HEAD	1,000 POUNDS	1,000 POUNDS
NEW ENG..	22.2	15.6	24,106	17,130	234.4	205.3	255,277	222,899
N.Y.....	40.5	32.5	44,145	36,498	444.0	410.5	482,343	453,978
N.J.....	33.5	31.0	42,545	39,556	392.0	347.0	488,294	434,020
PA.....	75.0	73.0	82,500	80,154	901.0	886.0	961,949	955,930
OHIO.....	106.0	98.0	105,364	100,940	1,269.5	1,268.5	1,233,081	1,267,828
IND.....	67.5	55.5	69,592	57,054	855.0	717.5	858,469	732,258
ILL.....	131.0	123.0	132,703	126,936	1,544.0	1,557.0	1,550,466	1,565,484
MICH.....	62.0	57.0	64,232	60,762	715.5	704.0	746,891	741,389
WIS.....	113.0	105.0	121,814	117,495	1,221.0	1,222.0	1,320,294	1,332,047
MINN.....	141.0	166.0	151,293	180,442	1,607.0	1,717.0	1,690,882	1,825,913
IOWA.....	370.0	356.0	393,680	384,836	3,987.0	4,046.0	4,152,633	4,268,302
MO.....	101.0	129.0	102,717	131,838	1,152.0	1,421.5	1,142,020	1,434,705
N.DAK....	13.4	16.2	14,191	17,123	157.2	157.5	163,657	164,296
S.DAK....	53.5	60.5	57,406	65,824	575.0	612.0	614,246	653,119
NEBR.....	267.0	196.0	280,617	318,200	2,879.0	3,442.0	2,960,782	3,589,423
KANS.....	129.0	131.0	131,838	137,943	1,477.0	1,609.0	1,479,584	1,635,705
DEL.-MD..	9.4	9.8	10,301	10,311	128.1	121.8	137,627	129,867
VA.....	18.0	16.4	18,342	16,679	231.0	222.4	232,013	223,112
W.VA.....	5.5	5.4	5,522	5,438	68.7	71.1	67,016	70,007
N.C.....	16.1	14.7	15,247	13,950	186.5	199.6	175,509	185,560
S.C.....	9.3	8.0	7,208	6,552	124.6	120.1	97,680	94,143
GA.....	31.0	29.5	24,211	24,220	409.5	404.5	320,242	325,903
FLA.....	34.5	32.0	31,326	28,832	411.0	411.5	370,116	369,997
KY.....	20.1	22.2	19,015	20,801	235.5	257.3	216,135	238,107
TENN.....	44.5	42.5	39,783	39,440	588.5	585.0	513,271	534,519
ALA.....	18.2	17.5	16,344	15,505	256.1	245.6	223,315	215,730
MISS.....	33.0	30.0	26,004	24,300	455.0	421.0	362,838	339,912
ARK.....	13.8	13.9	11,647	11,801	163.6	178.3	136,124	150,901
LA.....	12.5	11.7	9,988	9,290	158.0	156.0	118,261	121,331
OKLA.....	37.5	39.0	32,588	34,749	482.0	510.0	411,437	446,959
TEXAS....	185.0	182.0	164,465	163,072	2,383.0	2,434.0	2,114,142	2,146,499
MONT.....	22.9	20.4	23,358	21,012	219.6	242.5	223,446	246,893
IDAHO....	25.0	23.8	25,575	24,919	284.3	311.0	290,221	318,975
WYO.....	1.8	2.1	1,818	2,098	24.4	29.0	24,528	29,395
COLO.....	121.0	114.0	123,783	120,042	1,430.0	1,540.0	1,453,528	1,601,766
N.MEX....	21.2	21.6	20,140	20,952	237.5	280.3	225,469	269,513
ARIZ.....	20.3	19.2	19,102	18,528	239.5	243.2	218,898	228,882
UTAH.....	29.0	24.7	29,754	24,576	293.6	321.8	296,797	325,615
NEV.....	1.8	1.9	1,845	1,968	25.7	27.2	25,825	27,530
WASH.....	47.5	43.0	48,972	45,580	564.5	567.5	574,558	587,216
OREG.....	27.0	24.6	26,595	24,674	332.4	324.3	328,713	321,643
CALIF....	248.0	242.0	255,936	252,648	3,004.0	3,121.0	3,057,510	3,203,921
48 STATES	2,779.5		2,827,612		32,347.2		32,316,087	
		2,757.2		2,854,668		33,668.8		34,031,192
HAWAII...	4.4	4.5	4,167	4,284	50.7	56.7	47,962	54,814
U. S.....	2,783.9		2,831,779		32,397.9		32,364,049	
		2,761.7		2,858,952		33,725.5		34,086,006

1/ INCLUDES SLAUGHTER UNDER FEDERAL INSPECTION AND OTHER COMMERCIAL SLAUGHTER, EXCLUDES FARM SLAUGHTER.

2/ NEW ENGLAND INCLUDES MAINE, NEW HAMPSHIRE, VERMONT, MASSACHUSETTS, RHODE ISLAND AND CONNECTICUT. COMMERCIAL SLAUGHTER NOT ESTIMATED IN ALASKA.

3/ DATA FOR 1966 NOT COMPARABLE WITH PREVIOUS YEAR DUE TO CHANGE IN DEFINITION TO INCLUDE CUSTOM SLAUGHTERING IN PLANTS FOR FARMERS AS PART OF THE COMMERCIAL SLAUGHTER ESTIMATES.

COMMERCIAL CALF SLAUGHTER 1/

STATE 2/	DECEMBER				JANUARY-DECEMBER			
	NUMBER SLAUGHTERED		TOTAL LIVE WEIGHT		NUMBER SLAUGHTERED		TOTAL LIVE WEIGHT	
	1965	1966 3/	1965	1966 3/	1965	1966 3/	1965	1966 3/
	1,000 HEAD	1,000 HEAD	1,000 POUNDS	1,000 POUNDS	1,000 HEAD	1,000 HEAD	1,000 POUNDS	1,000 POUNDS
NEW ENG..	27.0	23.3	2,803	2,368	325.0	295.6	31,939	30,566
N.Y.....	86.5	76.0	10,380	8,360	929.0	903.5	113,687	107,316
N.J.....	29.5	26.0	5,841	5,070	410.5	362.0	86,076	72,508
PA.....	57.5	52.0	7,245	6,604	643.0	578.0	84,717	77,572
OHIO.....	10.4	6.7	1,872	1,280	128.1	102.0	24,794	19,410
IND.....	5.1	4.1	1,010	787	81.8	61.1	16,126	12,135
ILL.....	31.0	27.0	5,611	4,347	363.5	310.9	66,073	57,145
MICH.....	26.0	20.1	3,900	2,914	251.7	222.5	37,958	34,541
WIS.....	84.0	72.0	9,492	8,064	859.5	733.5	102,941	87,667
MINN.....	23.9	18.7	3,896	3,123	232.7	190.4	42,433	34,776
IOWA.....	43.5	26.0	6,699	4,160	430.5	331.5	69,716	52,211
MO.....	6.4	4.3	1,818	1,221	90.0	60.6	25,522	16,572
N.DAK....	--	--	--	--	.3	.3	109	123
S.DAK....	--	.3	--	104	.1	3.2	30	1,115
NEBR.....	.8	.9	352	377	13.3	9.7	6,273	4,208
KANS.....	2.7	1.0	1,072	361	38.8	16.5	14,280	6,117
DEL.-MD..	4.0	2.6	647	500	46.4	37.3	8,111	6,833
VA.....	16.0	13.6	4,080	3,563	237.4	197.5	58,242	48,866
W.VA.....	.6	.6	117	120	9.0	11.0	1,880	2,255
N.C.....	1.5	1.2	326	312	28.3	28.1	6,826	7,186
S.C.....	7.1	11.9	2,655	4,736	116.6	131.5	41,345	49,245
GA.....	2.4	4.2	1,049	1,781	43.2	61.1	18,826	26,342
FLA.....	21.6	20.4	6,242	5,630	259.8	260.4	74,640	76,879
KY.....	2.6	2.3	611	508	27.2	27.8	6,268	6,659
TENN.....	20.0	16.3	5,540	4,597	296.4	222.1	82,056	60,921
ALA.....	2.2	3.0	1,036	1,479	54.5	48.4	25,704	23,347
MISS.....	7.2	9.8	3,557	4,743	118.2	136.4	55,102	66,036
ARK.....	1.0	1.8	434	855	18.8	22.3	7,780	10,342
LA.....	21.5	18.3	9,138	8,107	275.2	259.2	121,285	114,457
OKLA.....	2.2	1.6	1,208	800	32.0	26.6	17,391	13,782
TEXAS....	44.0	38.0	23,892	21,128	594.0	584.5	320,025	325,107
MONT.....	.2	.5	70	144	1.8	2.0	570	689
IDAHO....	.2	.1	54	36	2.4	1.7	575	524
WYO.....	--	--	--	--	.5	.3	179	113
COLO.....	.2	.3	88	119	3.6	3.3	1,610	1,397
N.MEX....	.1	.2	43	100	1.1	1.1	488	512
ARIZ.....	.7	.4	344	185	7.5	5.5	3,617	2,600
UTAH.....	.5	.4	154	149	6.8	6.0	2,376	2,041
NEV.....	.1	.2	40	79	2.3	2.4	753	867
WASH.....	2.3	1.5	780	459	25.4	20.6	8,553	6,995
OREG.....	2.0	1.5	716	518	26.5	24.3	8,394	7,823
CALIF....	31.5	26.5	6,646	6,652	387.0	337.0	92,065	86,041
48 STATES	626.0	535.6	131,458	116,440	7,419.7	6,639.7	1,687,335	1,561,841
HAWAII...	--	--	--	--	--	.1	--	29
U. S.....	626.0	535.6	131,458	116,440	7,419.7	6,639.8	1,687,335	1,561,870

1/ INCLUDES SLAUGHTER UNDER FEDERAL INSPECTION AND OTHER COMMERCIAL SLAUGHTER, EXCLUDES FARM SLAUGHTER.

2/ NEW ENGLAND INCLUDES MAINE, NEW HAMPSHIRE, VERMONT, MASSACHUSETTS, RHODE ISLAND AND CONNECTICUT. COMMERCIAL SLAUGHTER NOT ESTIMATED IN ALASKA.

3/ DATA FOR 1966 NOT COMPARABLE WITH PREVIOUS YEAR DUE TO CHANGE IN DEFINITION TO INCLUDE CUSTOM SLAUGHTERING IN PLANTS FOR FARMERS AS PART OF THE COMMERCIAL SLAUGHTER ESTIMATES.

COMMERCIAL HOG SLAUGHTER 1/

STATE 2/	DECEMBER				JANUARY-DECEMBER			
	NUMBER SLAUGHTERED		TOTAL LIVE WEIGHT		NUMBER SLAUGHTERED		TOTAL LIVE WEIGHT	
	1965	1966 3/	1965	1966 3/	1965	1966 3/	1965	1966 3/
	HEAD	HEAD	POUNDS	POUNDS	HEAD	HEAD	POUNDS	POUNDS
NEW ENG..	9.4	21.9	2,270	5,064	300.3	197.5	67,692	46,258
N.Y.....	86.5	105.0	19,462	24,150	981.5	1,020.5	219,329	232,536
N.J.....	123.0	45.0	25,461	8,820	1,501.0	966.5	313,308	197,824
PA.....	250.0	333.0	57,750	75,591	2,910.0	3,228.0	661,201	734,303
OHIO.....	370.0	454.0	84,360	105,328	4,699.0	4,529.0	1,056,525	1,030,291
IND.....	309.0	260.0	77,868	65,780	4,073.0	3,167.0	988,215	786,788
ILL.....	344.0	465.0	88,064	117,645	4,641.0	4,704.0	1,162,068	1,207,427
MICH.....	154.0	179.0	34,958	41,707	1,890.0	1,847.0	429,208	420,921
WIS.....	219.0	293.0	52,560	70,613	2,996.0	2,980.0	701,411	713,032
MINN.....	382.0	527.0	98,556	133,858	5,210.0	5,157.0	1,307,068	1,324,783
IOWA.....	1,289.0	1,692.0	324,828	424,692	15,406.0	16,530.0	3,768,026	4,100,609
MO.....	209.0	246.0	52,250	63,960	3,028.0	2,781.0	741,013	708,273
N.DAK....	1.1	2.7	262	624	17.1	21.5	3,992	5,143
S.DAK....	184.0	245.0	48,208	64,925	2,250.0	2,355.0	579,301	620,012
NEBR.....	255.0	353.0	66,300	93,192	3,444.0	3,417.0	882,882	889,166
KANS.....	148.0	212.0	36,260	52,788	1,971.0	2,070.0	470,197	505,618
DEL.-MD..	51.7	48.4	11,013	10,419	610.1	558.2	129,245	119,038
VA.....	183.0	228.0	40,809	51,528	2,283.0	2,486.0	512,263	557,051
W.VA.....	6.5	9.5	1,618	2,460	92.8	100.5	22,534	24,818
N.C.....	102.0	111.0	22,644	24,975	1,228.5	1,258.0	273,407	281,491
S.C.....	36.0	47.5	8,460	10,498	420.5	483.5	98,082	113,648
GA.....	119.0	147.0	25,347	32,487	1,412.5	1,475.0	303,120	319,833
FLA.....	38.5	43.5	7,970	8,352	436.5	396.5	92,475	84,447
KY.....	120.0	155.0	27,240	37,355	1,462.0	1,535.0	334,326	355,464
TENN.....	184.0	234.0	46,000	57,798	2,354.0	2,455.0	564,400	597,776
ALA.....	56.0	71.5	12,768	16,302	745.5	718.5	167,138	163,638
MISS.....	67.5	82.0	15,795	18,450	806.0	848.0	183,848	194,635
ARK.....	23.3	30.5	5,545	7,381	312.6	306.8	74,155	73,074
LA.....	15.7	20.1	3,281	4,181	175.5	182.4	36,649	38,547
OKLA.....	44.5	59.5	11,837	15,886	567.5	643.5	144,617	165,909
TEXAS....	136.0	171.0	33,456	41,382	1,666.0	1,667.0	399,712	398,209
MONT.....	26.0	30.5	5,980	7,168	311.6	343.8	71,203	79,780
IDAHO....	7.3	10.7	1,664	2,418	109.4	108.0	24,307	24,323
WYO.....	2.4	3.3	571	812	34.7	33.1	8,048	7,721
COLD.....	46.5	52.0	10,928	12,220	521.0	624.5	119,114	145,243
N.MEX....	7.3	8.5	1,723	1,980	96.7	91.3	22,362	21,246
ARIZ.....	10.0	15.2	2,320	3,542	123.3	130.6	28,698	30,602
UTAH.....	8.7	22.0	2,010	4,862	173.4	152.7	38,671	34,217
NEV.....	.2	.2	46	46	2.0	1.8	419	380
WASH.....	43.0	57.5	9,890	13,052	586.5	610.5	132,006	138,266
OREG.....	24.0	24.3	5,304	5,516	341.0	296.7	75,859	67,336
CALIF....	122.0	143.0	27,328	33,748	1,593.0	1,520.0	374,875	342,413
48 STATES	5,814.1	7,259.3	1,410,964	1,773,555	73,783.5	73,997.9	17,582,969	17,902,089
HAWAII...	8.3	7.4	1,461	1,295	68.8	65.3	12,581	11,363
U. S.....	5,822.4	7,266.7	1,412,425	1,774,850	73,852.3	74,063.2	17,595,550	17,913,452

1/ INCLUDES SLAUGHTER UNDER FEDERAL INSPECTION AND OTHER COMMERCIAL SLAUGHTER, EXCLUDES FARM SLAUGHTER.

2/ NEW ENGLAND INCLUDES MAINE, NEW HAMPSHIRE, VERMONT, MASSACHUSETTS, RHODE ISLAND AND CONNECTICUT. COMMERCIAL SLAUGHTER NOT ESTIMATED IN ALASKA.

3/ DATA FOR 1966 NOT COMPARABLE WITH PREVIOUS YEAR DUE TO CHANGE IN DEFINITION TO INCLUDE CUSTOM SLAUGHTERING IN PLANTS FOR FARMERS AS PART OF THE COMMERCIAL SLAUGHTER ESTIMATES.

COMMERCIAL SHEEP AND LAMB SLAUGHTER 1/

STATE <u>2/</u>	DECEMBER				JANUARY-DECEMBER			
	NUMBER SLAUGHTERED		TOTAL LIVE WEIGHT		NUMBER SLAUGHTERED		TOTAL LIVE WEIGHT	
	1965	1966 <u>3/</u>	1965	1966 <u>3/</u>	1965	1966 <u>3/</u>	1965	1966 <u>3/</u>
	1,000 HEAD	1,000 HEAD	1,000 POUNDS	1,000 POUNDS	1,000 HEAD	1,000 HEAD	1,000 POUNDS	1,000 POUNDS
NEW ENG..	1.8	1.6	163	130	20.2	19.0	1,700	1,630
N.Y.....	20.4	17.0	2,020	1,666	264.1	207.0	25,497	20,078
N.J.....	73.0	78.0	7,154	7,566	1,011.5	874.0	96,312	83,460
PA.....	15.1	13.6	1,389	1,224	197.3	179.6	17,632	15,978
OHIO.....	26.0	27.5	2,548	2,612	209.2	303.6	19,551	28,954
IND.....	.7	.8	64	74	37.1	12.5	3,636	1,148
ILL.....	58.5	66.5	5,967	6,783	780.0	726.5	79,099	75,389
MICH.....	31.0	29.5	3,317	3,156	337.4	346.4	35,106	36,954
WIS.....	1.5	1.2	141	124	24.5	15.7	2,373	1,546
MINN.....	81.0	88.5	8,505	9,558	772.5	854.0	79,968	90,394
IOWA.....	80.5	46.0	8,130	4,600	917.5	792.5	91,123	80,190
MO.....	36.0	34.5	3,672	3,588	344.0	383.5	33,928	39,319
N.DAK.....	12.6	16.0	1,336	1,712	72.0	85.8	7,666	9,208
S.DAK.....	34.0	39.5	3,672	4,187	367.0	424.5	39,363	46,052
NEBR.....	62.0	69.5	6,572	7,506	790.5	854.5	82,224	90,475
KANS.....	28.0	18.5	2,772	1,887	375.4	297.5	36,877	29,236
DEL.-MD..	4.0	4.5	376	414	62.8	57.4	5,806	5,329
VA.....	.2	.2	21	20	3.3	3.2	319	306
W.VA.....	.4	.4	38	39	5.2	5.2	493	508
N.C.....	.1	.1	8	10	.9	1.3	84	124
S.C.....	--	--	--	--	.3	.3	28	31
GA.....	--	--	--	--	.1	.2	10	20
FLA.....	--	--	--	--	.9	.6	70	50
KY.....	17.8	15.9	1,833	1,654	204.0	175.9	20,200	18,303
TENN.....	4.2	3.4	403	330	74.4	59.7	6,994	5,619
ALA.....	--	--	--	--	1.2	.8	117	78
MISS.....	--	--	--	--	.1	.4	10	30
ARK.....	--	--	--	--	.1	.2	10	20
LA.....	.1	.1	9	8	1.7	2.7	147	199
OKLA.....	.2	.2	22	24	2.4	3.8	259	419
TEXAS....	47.0	77.0	4,371	7,546	1,231.5	1,322.0	108,931	120,867
MONT.....	.4	.3	38	28	4.5	4.5	448	446
IDAHO....	.8	.9	86	104	11.3	15.1	1,207	1,666
WYO.....	.3	.2	33	21	2.9	2.5	323	270
COLO.....	136.0	118.0	14,416	12,744	1,570.5	1,624.5	158,085	171,937
N.MEX....	2.8	2.5	288	255	37.4	32.7	3,931	3,466
ARIZ.....	1.0	1.1	108	116	14.0	14.8	1,550	1,590
UTAH.....	70.0	61.5	7,630	6,704	860.5	826.0	90,586	88,721
NEV.....	.2	.2	19	21	1.8	2.4	177	242
WASH.....	14.7	15.2	1,690	1,733	205.0	205.5	22,308	22,582
OREG.....	9.4	8.5	968	901	151.3	138.5	15,232	14,373
CALIF....	135.0	132.0	14,310	14,256	2,038.0	1,844.0	212,174	194,563
48 STATES	1,006.7	990.4	104,089	103,301	13,006.3	12,720.8	1,301,554	1,301,770
HAWAII...	.1	.1	10	10	1.2	1.7	127	157
U. S.....	1,006.8	990.5	104,099	103,311	13,007.5	12,722.5	1,301,681	1,301,927

1/ INCLUDES SLAUGHTER UNDER FEDERAL INSPECTION AND OTHER COMMERCIAL SLAUGHTER, EXCLUDES FARM SLAUGHTER.

2/ NEW ENGLAND INCLUDES MAINE, NEW HAMPSHIRE, VERMONT, MASSACHUSETTS, RHODE ISLAND AND CONNECTICUT. COMMERCIAL SLAUGHTER NOT ESTIMATED IN ALASKA.

3/ DATA FOR 1966 NOT COMPARABLE WITH PREVIOUS YEAR DUE TO CHANGE IN DEFINITION TO INCLUDE CUSTOM SLAUGHTERING IN PLANTS FOR FARMERS AS PART OF THE COMMERCIAL SLAUGHTER ESTIMATES.

LIVESTOCK SLAUGHTER, AVERAGE LIVE WEIGHT PER HEAD,
DECEMBER 1965 AND 1966 ^{1/}

STATE ^{2/}	CATTLE		CALVES		HOGS		SHEEP AND LAMBS	
	1965	1966	1965	1966	1965	1966	1965	1966
	POUNDS	POUNDS	POUNDS	POUNDS	POUNDS	POUNDS	POUNDS	POUNDS
NEW ENG..	1,086	1,098	104	102	241	231	91	81
N.Y.....	1,090	1,123	120	110	225	230	99	98
N.J.....	1,270	1,276	198	195	207	196	98	97
PA.....	1,100	1,098	126	127	231	227	92	90
OHIO.....	994	1,030	180	191	228	232	98	95
IND.....	1,031	1,028	198	192	252	253	91	93
ILL.....	1,013	1,032	181	161	256	253	102	102
MICH.....	1,036	1,066	150	145	227	233	107	107
WIS.....	1,078	1,119	113	112	240	241	94	103
MINN.....	1,073	1,087	163	167	258	254	105	108
IOWA.....	1,064	1,081	154	160	252	251	101	100
MD.....	1,017	1,022	284	284	250	260	102	104
N.DAK.....	1,059	1,057	--	--	238	231	106	107
S.DAK.....	1,073	1,088	--	348	262	265	108	106
NEBR.....	1,051	1,075	440	419	260	264	106	108
KANS.....	1,022	1,053	397	361	245	249	99	102
DEL.-MD..	1,096	1,052	162	192	213	215	94	92
VA.....	1,019	1,017	255	262	223	226	107	98
W.VA.....	1,004	1,007	195	200	249	259	95	97
N.C.....	947	949	217	260	222	225	83	100
S.C.....	775	819	374	398	235	221	--	--
GA.....	781	821	437	424	213	221	--	--
FLA.....	908	901	289	276	207	192	--	--
KY.....	946	937	235	221	227	241	103	104
TENN.....	894	928	277	282	250	247	96	97
ALA.....	898	886	471	493	228	228	--	--
MISS.....	788	810	494	484	234	225	--	--
ARK.....	844	849	434	475	238	242	--	--
LA.....	799	794	425	443	209	208	89	85
OKLA.....	869	891	549	500	266	267	111	119
TEXAS....	889	896	543	556	246	242	93	98
MONT.....	1,020	1,030	348	287	230	235	95	94
IDAHO....	1,023	1,047	271	356	228	226	108	115
WYO.....	1,010	999	--	--	238	246	109	105
COLO.....	1,023	1,053	439	398	235	235	106	108
N.MEX....	950	970	431	500	236	233	103	102
ARIZ.....	941	965	491	463	232	233	108	105
UTAH.....	1,026	995	307	372	231	221	109	109
NEV.....	1,025	1,036	400	395	228	231	93	105
WASH.....	1,031	1,060	339	306	230	227	115	114
OREG.....	985	1,003	358	345	221	227	103	106
CALIF....	1,032	1,044	211	251	224	236	106	108
48 STATES	1,017	1,035	210	217	243	244	103	104
HAWAII...	947	952	--	--	176	175	100	100
U. S. ..	1,017	1,035	210	217	243	244	103	104

^{1/} INCLUDES SLAUGHTER UNDER FEDERAL INSPECTION AND OTHER COMMERCIAL SLAUGHTER, EXCLUDES FARM SLAUGHTER.

^{2/} NEW ENGLAND INCLUDES MAINE, NEW HAMPSHIRE, VERMONT, MASSACHUSETTS, RHODE ISLAND AND CONNECTICUT. COMMERCIAL SLAUGHTER NOT ESTIMATED IN ALASKA.

OFFICIAL BUSINESS

(Continued from page 1)

LAMB AND MUTTON PRODUCTION DURING DECEMBER: There were 51 million pounds of lamb and mutton produced in December, 2 percent more than a month earlier. Total commercial slaughter of sheep and lambs was 990,400 head, down slightly from November 1966. Federally inspected sheep and lambs slaughtered in December totaled 905,000 head, 1 percent less than last year.

POULTRY PRODUCTION UP 14 PERCENT FROM DECEMBER 1965: Production of poultry meat during December amounted to 790 million pounds, ready-to-cook basis. This was 11 percent less than November 1966 but 14 percent greater than December 1965.

Beginning with January 1966 the commercial slaughter and meat production estimates include custom slaughtering in plants for farmers. Comparable data for 1965 and earlier years are not available; therefore, comparisons with the previous years are shown only for the number slaughtered in federally inspected plants.

Table 1.--Cattle: Percentages of number slaughtered in Federally inspected establishments, by classes, by weeks, 48 States, 1966 ^{1/}

Week ending	Percentages of total slaughter			
	Cows	Bulls	Heifers	Steers
Dec. 3	24.2	1.4	25.5	48.9
Dec. 10	24.9	1.5	25.0	48.6
Dec. 17	^{2/} 23.7	^{2/} 1.4	^{2/} 24.8	^{2/} 50.1
Dec. 24	21.3	1.4	25.1	52.2
Dec. 31	16.9	.9	26.7	55.5
Jan. 7	23.5	1.2	25.6	49.7
Jan. 14	22.9	1.3	26.4	49.4

^{1/} As reported by Meat Inspectors, MID, C&MS. ^{2/} Revised.

Table 2.--Cattle: Percentages of number slaughtered in Federally inspected establishments, by classes, monthly, 48 States ^{1/}

Month	Percentages of total slaughter				Total number slaughtered 1,000 head
	Cows	Bulls	Heifers	Steers	
Dec. 1965	28.3	1.6	23.1	47.0	2,314
Nov. 1966	24.1	1.4	25.2	49.3	2,285
Dec. 1966	22.4	1.3	25.4	50.9	2,257

^{1/} Based on voluntary reports from Federally inspected slaughtering plants.

This report is made possible through the cooperative efforts of the Consumer and Marketing Service and the Statistical Reporting Service.