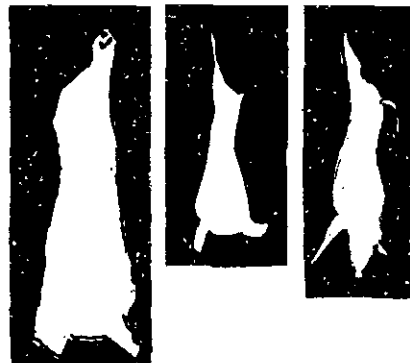


LIVESTOCK SLAUGHTER



OCTOBER 1967

November 30, 1967

OCTOBER RED MEAT OUTPUT HIGHEST OF RECORD: Commercial production of red meat in the 48 States during October totaled 3,010 million pounds according to the Crop Reporting Board. This was 2 percent above the previous high in January 1967 of 2,961 million pounds, 6 percent more than the October 1966 total of 2,829 million pounds, and 7 percent above September 1967. Near record high production of both beef and pork during October combined to push total red meat over 3 billion pounds for the first time. Commercial meat production includes slaughter in federally inspected and other slaughter plants, but excludes animals slaughtered on farms.

BEEF PRODUCTION 4 PERCENT ABOVE OCTOBER 1966: October beef production totaled 1,728 million pounds, up 4 percent from October 1966 and 5 percent above September 1967. The number of cattle slaughtered totaled 2,977,300 head, up 3 percent from October 1966 and 5 percent above September 1967. Average liveweight of cattle slaughtered during the month was 1,008 pounds, 3 pounds heavier than in October 1966 and 4 pounds heavier than in September 1967.

OCTOBER VEAL PRODUCTION 7 PERCENT BELOW 1966: There were 71 million pounds of veal produced during October, 7 percent below a year earlier, but 8 percent above September 1967. The 555,900 head of calves slaughtered was down 5 percent from October 1966. Average liveweight per head, at 230 pounds per head, was 5 pounds lighter than a year earlier.

PORK PRODUCTION UP 12 PERCENT FROM OCTOBER 1966: Pork production during October totaled 1,156 million pounds, up 12 percent from October 1966 and 11 percent above September 1967. The hog kill during October was 7,685,700 head, 11 percent more than a year earlier and 10 percent above September 1967. The average liveweight of hogs slaughtered during October was 241 pounds, 2 pounds heavier than a year earlier and 3 pounds heavier than in September. Lard rendered per 100 pounds of liveweight of hogs was 10.3 pounds, compared with 10.5 in October 1966 and 10.1 in September 1967.

LAMB AND MUTTON PRODUCTION 2 PERCENT UNDER OCTOBER 1966: There were 55 million pounds of lamb and mutton produced during October, 2 percent less than last year but the same as in September 1967. The number of sheep and lambs slaughtered during the month totaled 1,116,500 head, 1 percent fewer than in October 1966, and 3 percent under September 1967. Average liveweight in October was 102 pounds per head, the same as a year earlier, but 4 pounds heavier than in September 1967.

(Continued on page 8)

October commercial meat and lard production, 48 States with comparisons 1/

Month and year	Beef	Veal	Pork <u>2/</u>	Lamb and mutton	Total red meat <u>2/</u>	Poultry <u>3/</u>	Lard <u>4/</u>
	Million pounds	Million pounds	Million pounds	Million pounds	Million pounds	Million pounds	Million pounds
October 1966	1,668	76	1,029	56	2,829	958	175
September 1967	1,648	66	1,046	55	2,815	942	169
October 1967	1,728	71	1,156	55	3,010	1,007	190
Jan.-Oct. 1966 <u>5/</u>	16,201	726	8,930	538	26,395	7,108	1,532
Jan.-Oct. 1967 <u>5/</u>	16,785	631	10,136	536	28,088	7,715	1,686

1/ Excludes animals slaughtered on farms. 2/ Excludes lard and rendered pork fat.
3/ Chicken and turkey meat ready-to-cook basis, excludes slaughter on farms for home use.
4/ Includes rendered pork fat. 5/ Accumulated totals based on unrounded data.

October commercial livestock slaughter, 48 States, with comparisons 1/

Species, month and year	Number slaughtered			Average live weight	Total live weight
	Federally inspected	Other commercial	Total		
	1,000 head	1,000 head	1,000 head	Pounds	Million pounds
<u>CATTLE</u>					
October 1966	2,335.2	545.2	2,880.4	1,005	2,896
September 1967	2,330.5	507.9	2,838.4	1,004	2,850
October 1967	2,432.7	544.6	2,977.3	1,008	3,001
Jan.-Oct. 1966 <u>2/</u>	22,776.8	5,360.1	28,136.9	1,007	28,339
Jan.-Oct. 1967 <u>2/</u>	23,303.4	5,098.9	28,402.3	1,019	28,946
<u>CALVES</u>					
October 1966	388.6	194.7	583.3	235	137
September 1967	348.2	165.0	513.2	232	119
October 1967	383.2	172.7	555.9	230	128
Jan.-Oct. 1966 <u>2/</u>	3,681.0	1,855.8	5,536.8	238	1,315
Jan.-Oct. 1967 <u>2/</u>	3,321.8	1,616.6	4,938.4	231	1,140
<u>HOGS</u>					
October 1966	6,046.7	897.6	6,944.3	239	1,658
September 1967	6,114.5	896.6	7,011.1	238	1,667
October 1967	6,683.5	1,002.2	7,685.7	241	1,849
Jan.-Oct. 1966 <u>2/</u>	51,313.5	8,266.7	59,580.2	241	14,379
Jan.-Oct. 1967 <u>2/</u>	58,359.0	9,156.3	67,515.3	240	16,214
<u>SHEEP AND LAMBS</u>					
October 1966	1,022.3	110.8	1,133.1	102	115
September 1967	1,037.1	117.7	1,154.8	98	113
October 1967	1,006.8	109.7	1,116.5	102	113
Jan.-Oct. 1966 <u>2/</u>	9,752.2	999.3	10,751.5	102	1,097
Jan.-Oct. 1967 <u>2/</u>	9,726.9	1,084.4	10,811.3	101	1,092

1/ Excludes animals slaughtered on farms. 2/ Accumulated totals based on unrounded data.

COMMERCIAL CATTLE SLAUGHTER 1/

STATE	OCTOBER				JANUARY-OCTOBER			
	NUMBER SLAUGHTERED		TOTAL LIVE WEIGHT		NUMBER SLAUGHTERED		TOTAL LIVE WEIGHT	
	1966	1967	1966	1967	1966	1967	1966	1967
2/	1,000 HEAD	1,000 HEAD	1,000 POUNDS	1,000 POUNDS	1,000 HEAD	1,000 HEAD	1,000 POUNDS	1,000 POUNDS
NEW ENG..	18.8	17.1	19,858	18,655	174.0	138.1	188,707	152,008
N.Y.....	33.5	34.5	36,682	38,606	345.0	314.0	380,751	348,669
N.J.....	28.5	26.0	35,938	32,370	287.0	290.5	358,069	367,236
PA.....	75.5	73.0	81,087	77,234	739.5	704.0	797,641	757,882
OHIO.....	112.0	111.0	111,104	110,223	1,103.0	1,070.0	1,097,025	1,071,739
IND.....	57.5	55.5	57,845	55,611	606.5	528.0	618,428	542,803
ILL.....	122.0	133.0	122,000	132,335	1,313.0	1,252.0	1,313,797	1,260,454
MICH.....	60.0	60.5	62,880	62,012	590.0	573.0	618,896	600,325
WISC.....	102.0	108.0	109,548	116,424	1,014.0	983.5	1,101,149	1,096,231
MINN.....	150.0	178.0	158,850	188,858	1,395.0	1,547.0	1,477,771	1,643,444
IOWA.....	337.0	371.0	353,850	388,437	3,356.0	3,503.0	3,527,088	3,703,974
MO.....	125.0	128.0	126,000	130,304	1,168.0	1,272.0	1,173,708	1,303,600
N.DAK.....	16.0	17.0	16,640	18,020	125.3	147.2	130,149	155,487
S.DAK.....	51.0	65.5	53,193	69,102	510.0	598.0	540,116	637,943
NEBR.....	288.0	303.0	298,656	316,029	2,867.0	2,967.0	2,978,552	3,148,179
KANS.....	138.0	124.0	140,484	129,240	1,343.0	1,386.0	1,359,792	1,439,449
DEL.-MD..	10.3	10.8	10,889	11,318	101.3	102.0	108,284	109,585
VA.....	17.5	14.6	17,395	14,454	187.0	151.9	187,338	153,374
W.VA.....	6.2	6.1	5,958	6,027	59.7	52.7	58,766	53,157
N.C.....	17.5	16.6	15,732	15,554	165.8	144.7	153,835	137,481
S.C.....	9.4	7.0	7,370	5,712	102.6	70.6	80,010	57,599
GA.....	36.0	30.0	27,648	24,450	341.5	304.0	274,649	252,889
FLA.....	34.0	34.5	30,396	31,774	345.5	342.0	311,129	314,610
KY.....	23.3	16.3	21,273	14,849	214.6	197.9	198,425	186,068
TENN.....	55.5	56.5	50,450	52,206	492.0	482.0	449,124	450,550
ALA.....	22.8	21.8	20,132	19,358	207.8	202.3	181,923	181,616
MISS.....	39.0	37.0	31,785	30,895	355.0	337.0	285,984	280,718
ARK.....	14.0	16.9	11,592	14,652	155.6	151.6	131,349	130,657
LA.....	13.5	14.5	10,557	11,310	131.6	131.4	102,173	102,645
OKLA.....	45.5	55.0	39,858	49,885	418.0	438.0	365,390	393,656
TEXAS.....	210.0	228.0	184,590	197,676	2,034.0	2,184.0	1,788,670	1,919,566
MONT.....	21.7	21.7	21,765	22,026	200.4	207.6	204,007	209,143
IDAHO....	27.0	30.0	27,405	30,780	260.7	274.1	266,867	282,608
WYO.....	2.3	2.5	2,321	2,548	24.4	25.4	24,792	25,983
COLO.....	133.0	127.0	138,719	129,921	1,298.0	1,319.0	1,346,300	1,375,798
N.MEX....	23.6	25.0	22,703	24,225	240.8	244.1	229,903	234,583
ARIZ.....	19.8	21.4	18,652	20,202	204.8	206.1	192,018	197,642
UTAH.....	26.5	22.7	27,110	22,518	271.6	227.4	275,335	228,239
NEV.....	2.2	2.3	2,196	2,362	23.2	23.1	23,403	23,363
WASH.....	50.0	49.5	51,100	51,034	477.5	463.0	493,085	479,074
OREG.....	29.0	30.5	28,449	30,317	273.2	264.1	270,363	264,351
CALIF....	276.0	274.0	285,108	285,508	2,614.0	2,583.0	2,674,348	2,671,405
48 STATES	2,880.4	2,977.3	2,895,768	3,001,021	28,136.9	28,402.3	28,339,109	28,945,783
HAWAII...	4.6	5.0	4,333	4,960	47.2	49.8	45,805	48,860
U. S.....	2,885.0	2,982.3	2,900,101	3,005,981	28,184.1	28,452.1	28,384,914	28,994,643

1/ INCLUDES SLAUGHTER IN FEDERALLY INSPECTED AND OTHER SLAUGHTER PLANTS. EXCLUDES ANIMALS SLAUGHTERED ON FARMS.

2/ NEW ENGLAND INCLUDES MAINE, NEW HAMPSHIRE, VERMONT, MASSACHUSETTS, RHODE ISLAND AND CONNECTICUT. COMMERCIAL SLAUGHTER NOT ESTIMATED IN ALASKA.

COMMERCIAL CALF SLAUGHTER 1/

STATE 2/	OCTOBER				JANUARY-OCTOBER			
	NUMBER SLAUGHTERED		TOTAL LIVE WEIGHT		NUMBER SLAUGHTERED		TOTAL LIVE WEIGHT	
	1966	1967	1966	1967	1966	1967	1966	1967
	1,000 HEAD	1,000 HEAD	1,000 POUNDS	1,000 POUNDS	1,000 HEAD	1,000 HEAD	1,000 POUNDS	1,000 POUNDS
NEW ENG..	25.1	23.7	2,671	2,539	249.8	228.0	25,907	23,460
N.Y.....	77.5	77.5	8,835	7,905	749.0	696.5	89,772	77,168
N.J.....	31.5	35.5	6,394	7,526	306.5	295.3	61,508	60,965
PA.....	50.0	51.0	6,450	6,885	474.5	457.0	64,324	63,161
OHIO.....	8.5	9.0	1,658	1,701	89.5	89.2	17,089	17,091
IND.....	4.9	4.4	946	862	52.8	46.1	10,516	9,198
ILL.....	28.5	22.8	5,558	3,762	255.9	227.8	47,254	36,262
MICH.....	19.3	17.3	2,914	2,803	182.8	164.3	28,792	24,974
WISC.....	67.5	57.5	7,628	7,015	587.5	508.0	71,019	62,860
MINN.....	18.1	21.1	3,168	3,334	152.8	155.6	28,364	26,483
IOWA.....	26.0	31.5	4,160	4,725	277.0	248.0	43,491	38,876
MO.....	4.8	5.7	1,301	1,630	51.2	42.8	13,974	12,055
N.DAK....	.1	.1	43	40	.3	.3	123	126
S.DAK....	---	---	---	---	.2	.5	73	177
NEBR.....	.9	.7	372	289	7.9	8.4	3,481	3,624
KANS.....	1.3	.8	426	350	14.3	6.5	5,379	2,524
DEL.-MD..	2.8	2.9	565	540	31.7	30.2	5,777	5,747
VA.....	17.1	19.1	4,326	5,042	168.4	161.8	41,443	40,337
W.VA.....	1.0	.6	211	134	9.5	5.8	1,933	1,219
N.C.....	1.7	.9	442	181	24.7	9.3	6,300	2,031
S.C.....	12.2	13.5	4,831	5,440	108.0	117.8	39,869	45,386
GA.....	4.3	4.8	1,703	1,944	53.4	58.9	23,182	25,007
FLA.....	26.0	26.0	7,124	7,826	219.3	212.3	64,817	64,689
KY.....	2.3	.3	529	67	23.6	17.8	5,716	4,027
TENN.....	22.1	17.9	7,072	5,603	186.6	123.8	50,641	35,344
ALA.....	5.1	6.8	2,372	3,216	41.6	46.9	20,015	23,051
MISS.....	12.6	12.5	5,809	5,712	114.8	107.5	55,617	52,655
ARK.....	2.0	2.0	998	1,048	18.9	14.7	8,728	7,548
LA.....	21.7	21.4	9,222	9,459	219.8	190.0	97,720	85,110
OKLA.....	2.2	2.0	1,113	1,026	22.6	20.6	11,720	10,452
TEXAS....	53.0	37.5	29,309	20,288	500.5	353.0	278,495	194,667
MONT.....	.2	.2	69	69	1.3	1.2	483	415
IDAHO....	.2	.1	67	30	1.5	1.0	454	320
WYO.....	.1	.1	33	37	.3	.2	113	59
COLO.....	.3	.2	119	93	2.7	2.3	1,153	978
N.MEX....	.1	.1	50	50	.8	1.1	365	533
ARIZ.....	.5	.4	242	198	4.7	4.4	2,236	2,117
UTAH.....	.5	.5	179	168	5.2	5.1	1,750	1,787
NEV.....	.2	.2	76	78	2.0	2.0	710	747
WASH.....	1.7	1.9	595	650	17.6	15.4	5,996	5,102
OREG.....	2.4	2.2	869	755	20.8	16.0	6,603	5,090
CALIF....	27.0	23.2	6,561	6,589	284.5	245.0	72,317	66,722
48 STATES	583.3	555.9	137,010	127,609	5,536.8	4,938.4	1,315,219	1,140,144
HAWAII...	---	---	---	---	.1	.5	29	109
U. S.....	583.3	555.9	137,010	127,609	5,536.9	4,938.9	1,315,248	1,140,253

1/ INCLUDES SLAUGHTER IN FEDERALLY INSPECTED AND OTHER SLAUGHTER PLANTS. EXCLUDES ANIMALS SLAUGHTERED ON FARMS.

2/ NEW ENGLAND INCLUDES MAINE, NEW HAMPSHIRE, VERMONT, MASSACHUSETTS, RHODE ISLAND AND CONNECTICUT. COMMERCIAL SLAUGHTER NOT ESTIMATED IN ALASKA.

COMMERCIAL HOG SLAUGHTER 1/

STATE 2/	OCTOBER				JANUARY-OCTOBER			
	NUMBER SLAUGHTERED		TOTAL LIVE WEIGHT		NUMBER SLAUGHTERED		TOTAL LIVE WEIGHT	
	1966	1967	1966	1967	1966	1967	1966	1967
	1,000 HEAD	1,000 HEAD	1,000 POUNDS	1,000 POUNDS	1,000 HEAD	1,000 HEAD	1,000 POUNDS	1,000 POUNDS
NEW ENG..	20.4	11.5	4,727	2,813	156.4	119.7	36,727	28,631
N.Y.....	100.0	70.0	22,000	16,100	817.5	900.5	185,454	207,433
N.J.....	48.5	42.5	9,748	8,032	885.0	405.0	182,178	76,172
PA.....	298.0	397.0	68,242	91,310	2,585.0	3,272.0	587,412	735,245
OHIO.....	421.0	440.0	96,409	100,320	3,652.0	3,968.0	828,096	897,791
IND.....	247.0	259.0	61,009	64,750	2,653.0	2,448.0	657,000	608,076
ILL.....	428.0	427.0	108,712	104,615	3,798.0	4,010.0	975,563	1,022,159
MICH.....	169.0	199.0	38,870	46,168	1,506.0	1,846.0	342,953	423,051
WISC.....	276.0	288.0	65,136	68,544	2,386.0	2,506.0	569,577	591,942
MINN.....	506.0	588.0	127,006	146,412	4,084.0	4,780.0	1,050,057	1,194,573
IOWA.....	1,664.0	1,926.0	397,696	471,870	13,151.0	15,988.0	3,252,480	3,953,629
MO.....	263.0	299.0	66,013	74,451	2,272.0	2,454.0	577,260	610,874
N.DAK.....	2.4	2.7	562	643	15.5	19.6	3,747	4,739
S.DAK.....	252.0	267.0	63,756	67,818	1,859.0	1,968.0	489,567	512,641
NEBR.....	341.0	413.0	86,273	105,315	2,702.0	3,154.0	701,492	817,519
KANS.....	205.0	219.0	50,020	53,217	1,640.0	1,999.0	398,766	483,839
DEL.-MD..	47.6	53.3	10,294	11,568	464.2	447.8	98,875	95,501
VA.....	231.0	255.0	52,206	58,395	2,024.0	2,428.0	451,937	541,845
W.VA.....	9.6	10.0	2,275	2,430	81.3	90.3	19,855	21,672
N.C.....	112.0	131.0	25,088	29,082	1,033.0	1,266.0	230,858	280,324
S.C.....	37.5	45.5	9,150	11,420	396.5	429.0	93,828	102,565
GA.....	127.0	149.0	28,067	33,525	1,182.0	1,386.0	255,810	304,819
FLA.....	32.0	42.0	6,880	8,988	308.0	376.5	66,176	81,309
KY.....	137.0	30.0	31,647	7,710	1,241.0	1,171.5	286,646	275,285
TENN.....	222.0	269.0	53,724	64,560	1,987.0	2,510.0	481,712	597,981
ALA.....	63.0	74.0	14,553	16,872	581.5	695.5	132,327	158,008
MISS.....	73.5	85.0	17,126	18,955	683.0	808.5	156,846	177,912
ARK.....	28.5	31.5	6,669	7,623	257.9	295.0	61,151	70,439
LA.....	15.3	18.7	3,274	4,020	145.0	164.9	30,595	35,111
OKLA.....	59.5	65.5	15,113	16,637	521.5	593.0	133,704	148,991
TEXAS.....	151.0	178.0	35,787	42,542	1,329.0	1,574.0	316,899	374,615
MONT.....	30.5	32.5	7,015	7,540	281.8	306.5	65,398	71,011
IDAHO.....	9.3	12.2	2,083	2,708	87.1	109.1	19,620	23,935
WYO.....	3.0	3.2	687	733	27.0	29.0	6,268	6,731
COLO.....	55.0	69.0	12,980	15,939	514.0	551.5	119,159	127,993
N.MEX.....	7.8	9.3	1,802	2,120	74.8	82.0	17,394	18,898
ARIZ.....	11.5	14.5	2,656	3,393	102.4	127.7	24,044	29,640
UTAH.....	19.6	12.3	4,351	2,841	106.9	120.0	24,095	27,202
NEV.....	.1	.2	22	41	1.4	1.9	292	404
WASH.....	60.0	63.0	13,440	14,175	493.5	526.5	112,005	118,871
OREG.....	21.7	23.3	4,882	5,266	250.0	222.3	56,758	50,046
CALIF.....	138.0	160.0	29,808	37,600	1,244.0	1,365.0	278,607	304,778
48 STATES	6,944.3	7,685.7	1,657,758	1,849,061	59,580.2	67,515.3	14,379,188	16,214,200
HAWAII...	5.1	4.7	852	813	53.1	48.6	9,242	8,451
U. S.....	6,949.4	7,690.4	1,658,610	1,849,874	59,633.3	67,563.9	14,388,430	16,222,651

1/ INCLUDES SLAUGHTER IN FEDERALLY INSPECTED AND OTHER SLAUGHTER PLANTS. EXCLUDES ANIMALS SLAUGHTERED ON FARMS.

2/ NEW ENGLAND INCLUDES MAINE, NEW HAMPSHIRE, VERMONT, MASSACHUSETTS, RHODE ISLAND AND CONNECTICUT. COMMERCIAL SLAUGHTER NOT ESTIMATED IN ALASKA.

COMMERCIAL SHEEP AND LAMB SLAUGHTER 1/

STATE 2/	OCTOBER				JANUARY-OCTOBER			
	NUMBER SLAUGHTERED		TOTAL LIVE WEIGHT		NUMBER SLAUGHTERED		TOTAL LIVE WEIGHT	
	1966	1967	1966	1967	1966	1967	1966	1967
	1,000 HEAD	1,000 HEAD	1,000 POUNDS	1,000 POUNDS	1,000 HEAD	1,000 HEAD	1,000 POUNDS	1,000 POUNDS
NEW ENG..	2.3	2.0	195	178	16.1	14.9	1,378	1,277
N.Y.....	18.1	6.6	1,756	634	175.1	133.4	16,951	12,902
N.J.....	75.5	80.5	7,022	7,567	725.5	751.5	69,126	71,634
PA.....	16.4	16.4	1,443	1,361	151.8	157.4	13,504	13,787
OHIO.....	29.5	28.5	2,832	2,679	252.7	232.6	24,147	21,811
IND.....	1.2	1.2	110	115	10.7	10.7	976	980
ILL.....	62.0	62.5	6,634	6,438	596.5	593.5	61,875	61,002
MICH.....	38.0	27.0	4,028	2,754	291.6	313.5	30,967	32,373
WISC.....	1.1	1.4	110	141	13.4	13.4	1,312	1,328
MINN.....	98.5	84.0	10,342	8,736	667.5	597.5	70,546	63,264
IOWA.....	47.5	48.5	4,702	4,704	701.0	426.5	71,086	41,937
MO.....	26.5	28.0	2,650	2,828	319.5	300.4	32,693	30,654
N.DAK....	14.8	16.5	1,598	1,683	56.1	88.1	6,030	9,584
S.DAK....	41.0	38.5	4,305	3,966	348.0	373.5	37,906	39,991
NEBR.....	78.5	91.0	8,321	9,737	715.0	689.0	75,549	72,000
KANS.....	24.4	19.5	2,391	1,892	260.2	206.9	25,469	20,077
DEL.-MD..	5.4	5.3	464	566	45.7	47.4	4,247	4,356
VA.....	.2	.2	19	19	2.8	2.8	268	287
W.VA.....	.5	.5	50	49	4.5	4.9	439	474
N.C.....	.1	.2	9	18	1.1	1.4	104	140
S.C.....	---	---	---	---	.2	.3	20	28
GA.....	.1	---	10	---	.2	.1	20	7
FLA.....	---	---	---	---	.5	.6	38	46
KY.....	19.3	18.2	1,891	1,820	139.4	149.2	14,548	15,767
TENN.....	4.5	3.0	405	258	52.0	36.6	4,881	3,407
ALA.....	---	.1	---	10	.8	.5	78	51
MISS.....	.1	---	10	---	.4	.2	30	17
ARK.....	---	---	---	---	.1	.2	10	16
LA.....	.2	.2	16	17	2.4	2.0	176	156
OKLA.....	.3	.3	32	33	3.3	1.8	360	207
TEXAS....	122.0	133.0	11,224	12,635	1,163.0	1,456.0	105,531	131,016
MONT.....	.4	.6	38	62	3.8	4.2	381	442
IDAHO....	1.9	1.3	215	146	11.0	10.9	1,216	1,185
WYO.....	.2	.5	19	51	1.9	2.6	205	289
COLO.....	130.0	131.0	13,390	13,362	1,407.5	1,332.5	148,610	139,685
N.MEX....	2.6	4.1	273	406	27.9	32.1	2,969	3,425
ARIZ.....	1.1	.9	118	105	12.8	14.5	1,380	1,591
UTAH.....	72.5	63.0	7,975	6,615	701.0	771.0	75,095	81,480
NEV.....	.3	.2	29	20	2.0	1.9	200	191
WASH.....	21.0	21.8	2,394	2,311	173.5	197.0	19,001	20,790
OREG.....	11.1	12.0	1,177	1,284	122.0	130.8	12,608	13,576
CALIF....	164.0	168.0	17,220	18,144	1,571.0	1,707.0	165,220	178,495
48 STATES	1,133.1	1,116.5	115,417	113,344	10,751.5	10,811.3	1,097,150	1,091,725
HAWAII...	---	.1	---	7	1.6	.4	147	39
U. S.....	1,133.1	1,116.6	115,417	113,351	10,753.1	10,811.7	1,097,297	1,091,764

1/ INCLUDES SLAUGHTER IN FEDERALLY INSPECTED AND OTHER SLAUGHTER PLANTS. EXCLUDES ANIMALS SLAUGHTERED ON FARMS.

2/ NEW ENGLAND INCLUDES MAINE, NEW HAMPSHIRE, VERMONT, MASSACHUSETTS, RHODE ISLAND AND CONNECTICUT. COMMERCIAL SLAUGHTER NOT ESTIMATED IN ALASKA.

LIVESTOCK SLAUGHTER, AVERAGE LIVE WEIGHT PER HEAD,
OCTOBER 1966 AND 1967 1/

STATE 2/	CATTLE		CALVES		HOGS		SHEEP AND LAMBS	
	1966	1967	1966	1967	1966	1967	1966	1967
	POUNDS	POUNDS	POUNDS	POUNDS	POUNDS	POUNDS	POUNDS	POUNDS
NEW ENG..	1,056	1,091	106	107	232	245	85	89
N.Y.....	1,095	1,119	114	102	220	230	97	96
N.J.....	1,261	1,245	203	212	201	189	93	94
PA.....	1,074	1,058	129	135	229	230	88	83
OHIO.....	992	993	195	189	229	228	96	94
IND.....	1,006	1,002	193	196	247	250	92	96
ILL.....	1,000	995	195	165	254	245	107	103
MICH.....	1,048	1,025	151	162	230	232	106	102
WISC.....	1,074	1,078	113	122	236	238	100	101
MINN.....	1,059	1,061	175	158	251	249	105	104
IOWA.....	1,050	1,047	160	150	239	245	99	97
MO.....	1,008	1,018	271	286	251	249	100	101
N.DAK....	1,040	1,060	433	400	234	238	108	102
S.DAK....	1,043	1,055	---	---	253	254	105	103
NEBR.....	1,037	1,043	413	413	253	255	106	107
KANS.....	1,018	1,010	328	438	244	243	98	97
DEL.-MD..	1,057	1,048	202	186	216	217	86	107
VA.....	994	990	253	264	226	229	95	95
W.VA.....	961	988	211	224	237	243	100	98
N.C.....	899	937	260	201	224	222	92	88
S.C.....	784	816	396	403	244	251	---	---
GA.....	768	815	396	405	221	225	100	---
FLA.....	894	921	274	301	215	214	---	---
KY.....	913	911	230	224	231	257	98	100
TENN.....	909	924	320	313	242	240	90	86
ALA.....	883	888	465	473	231	228	---	100
MISS.....	815	835	461	457	233	223	96	---
ARK.....	828	867	499	524	234	242	---	---
LA.....	782	780	425	442	214	215	80	83
OKLA.....	876	907	506	513	254	254	107	111
TEXAS....	879	867	553	541	237	239	92	95
MONT.....	1,003	1,015	347	346	230	232	95	103
IDAHO....	1,015	1,026	334	305	224	222	113	112
WYO.....	1,009	1,019	332	366	229	229	97	102
COLO.....	1,043	1,023	397	463	236	231	103	102
N.MEX....	962	969	500	500	231	228	105	99
ARIZ.....	942	944	485	495	231	234	107	117
UTAH.....	1,023	992	358	336	222	231	110	105
NEV.....	998	1,027	378	389	217	206	97	100
WASH.....	1,022	1,031	350	342	224	225	114	106
OREG.....	981	994	362	343	225	226	106	107
CALIF....	1,033	1,042	243	284	216	235	105	108
48 STATES	1,005	1,008	235	230	239	241	102	102
HAWAII...	942	992	---	---	167	173	---	67
U. S.....	1,005	1,008	235	230	239	241	102	102

1/ INCLUDES SLAUGHTER IN FEDERALLY INSPECTED AND OTHER SLAUGHTER PLANTS,
EXCLUDES ANIMALS SLAUGHTERED ON FARMS.

2/ NEW ENGLAND INCLUDES MAINE, NEW HAMPSHIRE, VERMONT, MASSACHUSETTS, RHODE ISLAND
AND CONNECTICUT. COMMERCIAL SLAUGHTER NOT ESTIMATED IN ALASKA.

UNITED STATES DEPARTMENT OF AGRICULTURE
 STATISTICAL REPORTING SERVICE
 WASHINGTON, D. C. 20250

POSTAGE AND FEES PAID
 U. S. DEPARTMENT OF AGRICULTURE

OFFICIAL BUSINESS

(Continued from page 1)

POULTRY PRODUCTION UP 5 PERCENT FROM OCTOBER 1966: Production of poultry meat during October totaled 1,007 million pounds, ready-to-cook basis. This was 5 percent more than in October 1966 and 7 percent more than the September 1967 total.

Table 1.--Cattle: Percentages of number slaughtered in Federally inspected establishments, by classes, by weeks, 48 States, 1967 1/

Week ending	Percentages of total slaughter			
	Cows	Bulls	Heifers	Steers
Oct. 7	21.3	1.4	26.5	50.8
Oct. 14	20.4	1.3	26.9	51.4
Oct. 21	21.2	1.2	27.0	50.6
Oct. 28	21.9	1.4	26.4	50.3
Nov. 4	23.2	1.4	26.0	49.4
Nov. 11	23.5	1.4	27.1	48.0
Nov. 18	24.0	1.5	25.9	48.6

1/ As reported by Meat Inspectors, LSID, C&MS.

Table 2.--Cattle: Percentages of number slaughtered in Federally inspected establishments, by classes, monthly, 48 States 1/

Month	Percentages of total slaughter				Total Number slaughtered (000)
	Cows	Bulls	Heifers	Steers	
Oct. 1966	23.4	1.6	26.4	48.6	2,335
Sept. 1967	20.3	1.5	27.3	50.9	2,330
Oct. 1967	21.3	1.4	26.6	50.7	2,433

1/ Based on voluntary reports from Federally inspected slaughtering plants.

This report is made possible through the cooperative efforts of the Consumer and Marketing Service and the Statistical Reporting Service.