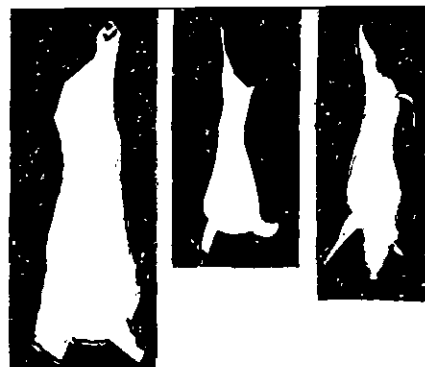


# LIVESTOCK SLAUGHTER



AUGUST 1968

September 30, 1968

AUGUST RED MEAT PRODUCTION UP 1 PERCENT FROM 1967: Commercial production of red meat in the 48 States during August totaled 2,903 million pounds, according to the Crop Reporting Board. This was up 1 percent from the August 1967 total of 2,869 million pounds, and 2 percent above July 1968. Commercial meat production includes slaughter in federally inspected and other slaughter plants, but excludes animals slaughtered on farms.

BEEF PRODUCTION 4 PERCENT ABOVE AUGUST 1967: Beef production during August was 1,799 million pounds, up 4 percent from August 1967 and 1 percent above July 1968. The number of cattle slaughtered during August totaled 3,087,400 head, 3 percent more than a year earlier. Average live weight of cattle slaughtered during the month was 995 pounds, 3 pounds lighter than a year earlier and 11 pounds lighter than in July 1968.

AUGUST VEAL PRODUCTION 12 PERCENT LESS THAN A YEAR EARLIER: There were 60 million pounds of veal produced during August, down 12 percent from a year earlier, but 5 percent above July 1968. The 443,200 head of calves slaughtered during the month was down 12 percent from August 1967.

PORK PRODUCTION DOWN 1 PERCENT FROM AUGUST 1967: Pork production during August totaled 995 million pounds, down 1 percent from August 1967, but 6 percent above July 1968. The hog kill during August was 6,721,300 head, slightly below the year-earlier total. The average live weight of hogs slaughtered during August was 235 pounds, 4 pounds less than a year earlier and 7 pounds less than in July 1968. Lard rendered per 100 pounds of live weight of hogs was 10.1 pounds compared with 10.3 in August 1967 and 10.1 in July 1968.

LAMB AND MUTTON PRODUCTION 9 PERCENT BELOW A YEAR EARLIER: There were 49 million pounds of lamb and mutton produced during August, down 9 percent from a year earlier but 2 percent more than in July 1968. The number of sheep and lambs slaughtered during August was 1,011,200 head, 10 percent fewer than a year earlier.

(Continued on page 8)

UNITED STATES DEPARTMENT OF AGRICULTURE

Statistical Reporting Service

MtAn 1-2 (9-68)

Crop Reporting Board  
Washington, D. C. 20250

Commercial Meat and Lard Production: 48 States, August with comparisons 1/

Kind	August	July	August	: Aug. 1968 as % of :		January-August 5/		
	1967	1968	1968	Aug.	July	1967	1968	:1968 as %
	Million	Million	Million	Percent	Percent	Million	Million	: of 1967
	pounds	pounds	pounds			pounds	pounds	Percent
Beef .....	1,738	1,790	1,799	104	101	13,408	13,720	102
Veal .....	68	57	60	88	105	495	453	92
Pork 2/ .....	1,009	943	995	99	106	7,940	8,258	104
Lamb & Mutton .....	54	48	49	91	102	427	393	92
Total Red Meat	2,869	2,838	2,903	101	102	22,270	22,824	102
Poultry 3/ .....	978	805	880	90	109	5,694	5,517	97
Lard 4/ .....	166	152	159	96	105	1,325	1,318	99

1/ Excludes animals slaughtered on farms. 2/ Excludes lard and rendered pork fat. 3/ Chicken and turkey meat ready-to-cook basis, excludes slaughter on farms. 4/ Includes rendered pork fat. 5/ Accumulated totals based on unrounded data.

Commercial Livestock Slaughter: 48 States, August with comparisons 1/

Species	Unit	August	July	August	: Aug. 1968 as % of :		January-August 2/		
		1967	1968	1968	Aug.	July	1967	1968	:1968 as
					Pct.	Pct.			:% of 1967
<b>CATTLE</b>									
Number									
Fed. Insp. : thou.		2,460.8	2,608.7	2,648.5	108	102	18,549.0	19,443.2	105
Other .....	thou.	537.7	443.0	438.9	82	99	4,033.4	3,701.1	92
Total ...	thou.	2,998.5	3,051.7	3,087.4	103	101	22,582.4	23,144.3	102
Live Weight									
Per Head ...	lb.	998	1,006	995	100	99	1,022	1,017	100
Total ...	mil.lb.	2,993	3,070	3,073	103	100	23,090	23,545	102
<b>CALVES</b>									
Number									
Fed. Insp. : thou.		332.3	287.7	310.9	94	108	2,590.4	2,498.8	96
Other .....	thou.	174.1	127.5	132.3	76	104	1,273.4	1,062.5	83
Total ...	thou.	506.4	415.2	443.2	88	107	3,863.8	3,561.3	92
Live Weight									
Per Head ...	lb.	241	244	242	100	99	231	228	99
Total ...	mil.lb.	122	101	107	88	106	893	812	91
<b>HOGS</b>									
Number									
Fed. Insp. : thou.		5,807.6	5,453.9	5,941.8	102	109	45,586.0	47,841.5	105
Other .....	thou.	924.5	755.6	779.5	84	103	7,239.6	6,915.8	96
Total ...	thou.	6,732.1	6,209.5	6,721.3	100	108	52,825.6	54,757.3	104
Live Weight									
Per Head ...	lb.	239	242	235	98	97	241	239	99
Total ...	mil.lb.	1,608	1,500	1,578	98	105	12,706	13,093	103
<b>SHEEP &amp; LAMBS</b>									
Number									
Fed. Insp. : thou.		1,001.0	927.7	929.7	93	100	7,703.5	7,184.9	93
Other .....	thou.	122.0	81.8	81.5	67	100	858.9	724.1	84
Total ...	thou.	1,123.0	1,009.5	1,011.2	90	100	8,562.4	7,909.0	92
Live Weight									
Per Head ...	lb.	98	99	99	101	100	101	102	101
Total ...	mil.lb.	110	100	100	91	100	867	803	93

1/ Excludes animals slaughtered on farms. 2/ Accumulated totals based on unrounded data.

COMMERCIAL CATTLE SLAUGHTER 1/

STATE 2/	AUGUST				JANUARY-AUGUST			
	NUMBER SLAUGHTERED		TOTAL LIVE WEIGHT		NUMBER SLAUGHTERED		TOTAL LIVE WEIGHT	
	1967	1968	1967	1968	1967	1968	1967	1968
	1,000 HEAD	1,000 HEAD	1,000 POUNDS	1,000 POUNDS	1,000 HEAD	1,000 HEAD	1,000 POUNDS	1,000 POUNDS
NEW ENG..	14.0	14.9	14,918	16,035	108.5	113.0	117,533	123,935
N.Y.....	33.0	33.0	36,168	36,795	248.0	244.0	275,539	276,721
N.J.....	32.0	31.5	39,904	38,241	234.0	213.3	296,436	262,702
PA.....	74.0	68.5	77,996	73,980	561.5	544.0	607,186	591,805
OHIO.....	116.0	105.0	114,376	102,480	846.0	797.5	849,967	802,819
IND.....	57.0	56.5	58,596	55,992	418.5	419.0	431,788	419,047
ILL.....	137.0	129.0	134,671	129,129	990.0	933.0	1,000,667	948,585
MICH.....	63.0	62.5	64,449	65,250	457.0	457.0	480,427	478,157
WISC.....	101.0	108.0	110,292	118,368	759.5	801.0	851,201	899,044
MINN.....	166.0	170.0	170,150	178,160	1,223.0	1,302.0	1,302,016	1,399,039
IDWA.....	368.0	404.0	379,408	409,656	2,778.0	3,058.0	2,949,616	3,204,982
MO.....	129.0	140.0	130,290	137,760	1,020.0	1,043.0	1,049,792	1,067,498
N.DAK.....	17.0	16.9	17,680	17,187	112.0	131.8	118,739	141,911
S.DAK.....	58.5	63.0	60,723	64,260	476.5	472.5	509,461	503,652
NEBR.....	296.0	328.0	306,360	333,904	2,372.0	2,536.0	2,529,638	2,674,578
KANS.....	143.0	130.0	145,002	131,690	1,131.0	1,033.0	1,180,065	1,062,060
DEL.-MD..	10.5	9.9	11,552	10,388	79.3	79.6	85,150	85,096
VA.....	14.7	14.8	14,597	14,770	123.1	115.8	124,706	117,470
W.VA.....	5.5	5.4	5,528	5,297	41.3	42.2	41,915	42,815
N.C.....	14.3	13.5	13,599	12,312	113.5	107.6	108,323	103,073
S.C.....	6.5	7.0	5,486	5,516	57.1	53.8	46,479	44,916
GA.....	33.5	30.5	27,671	25,803	244.0	226.5	203,719	193,918
FLA.....	37.0	35.5	33,855	31,844	275.0	272.5	254,454	253,719
KY.....	23.0	22.2	21,367	20,535	160.1	167.7	151,073	158,199
TENN.....	54.5	55.5	50,522	51,171	371.5	379.0	348,772	358,608
ALA.....	22.0	22.2	19,756	19,314	159.8	180.2	143,950	158,684
MISS.....	38.0	37.5	31,502	30,825	262.0	247.0	218,473	203,080
ARK.....	17.0	18.3	14,705	16,086	117.8	125.7	101,405	110,356
LA.....	14.8	14.6	11,470	11,242	102.8	103.9	80,407	81,854
GKLA.....	45.5	61.0	39,812	56,181	334.5	460.5	299,952	426,997
TEXAS.....	240.0	258.0	206,880	224,202	1,749.0	1,826.0	1,541,593	1,571,781
MONT.....	23.0	16.7	23,092	16,817	164.9	125.7	165,886	127,589
IDAHO.....	30.0	32.5	30,360	33,280	215.2	237.0	222,286	244,609
WYO.....	3.1	3.8	3,131	3,648	20.5	22.4	20,984	22,465
COLOR.....	131.0	133.0	133,751	134,862	1,072.0	1,056.0	1,124,917	1,110,524
N.MEX.....	26.5	28.5	25,520	27,588	195.4	209.7	187,416	201,483
ARIZ.....	21.1	41.5	20,024	41,334	164.5	247.6	158,311	243,937
UTAH.....	23.5	24.9	23,124	24,651	182.6	186.4	183,776	186,722
NEV.....	2.5	2.3	2,442	2,261	18.4	19.0	18,560	18,411
WASH.....	50.5	53.0	51,611	53,689	370.5	397.0	384,491	411,171
OREG.....	30.0	32.5	29,700	31,980	205.1	225.4	205,848	226,438
CALIF.....	276.0	252.0	280,968	258,552	2,049.0	1,932.0	2,117,577	1,984,224
48 STATES	2,998.5	3,087.4	2,993,008	3,073,035	22,582.4	23,144.3	23,090,494	23,544,674
HAWAII...	5.6	5.7	5,555	5,586	40.1	43.1	39,099	42,253
U. S.....	3,004.1	3,093.1	2,998,563	3,078,621	22,622.5	23,187.4	23,129,593	23,586,927

1/ INCLUDES SLAUGHTER IN FEDERALLY INSPECTED AND OTHER SLAUGHTER PLANTS, EXCLUDES ANIMALS SLAUGHTERED ON FARMS.

2/ NEW ENGLAND INCLUDES MAINE, NEW HAMPSHIRE, VERMONT, MASSACHUSETTS, RHODE ISLAND AND CONNECTICUT, COMMERCIAL SLAUGHTER NOT ESTIMATED IN ALASKA.

COMMERCIAL CALF SLAUGHTER 1/

STATE 2/	AUGUST				JANUARY-AUGUST			
	NUMBER SLAUGHTERED		TOTAL LIVE WEIGHT		NUMBER SLAUGHTERED		TOTAL LIVE WEIGHT	
	1967	1968	1967	1968	1967	1968	1967	1968
	1,000 HEAD	1,000 HEAD	1,000 POUNDS	1,000 POUNDS	1,000 HEAD	1,000 HEAD	1,000 POUNDS	1,000 POUNDS
NEW ENG..	23.1	20.0	2,469	2,126	180.1	165.0	18,699	16,793
N.Y.....	73.0	61.5	7,592	6,580	543.5	537.5	61,260	62,308
N.J.....	36.5	37.5	7,848	8,550	224.8	265.5	45,949	58,207
PA.....	51.5	46.5	7,056	5,906	357.5	339.5	49,777	44,550
OHIO.....	8.4	7.2	1,579	1,397	65.9	59.1	12,721	11,167
IND.....	5.2	4.4	1,082	893	36.8	34.7	7,336	6,853
ILL.....	20.3	15.9	3,268	2,751	183.8	133.6	29,150	22,741
MICH.....	17.0	14.2	2,567	2,258	131.6	119.9	19,692	17,796
MISC.....	36.5	30.0	4,818	4,170	404.0	347.5	50,064	44,826
MINN.....	10.5	7.9	1,953	1,596	121.3	100.6	20,958	17,807
IOWA.....	22.0	20.1	3,520	3,116	191.7	203.8	30,431	31,854
MO.....	4.3	4.6	1,161	1,279	33.1	31.3	9,305	8,260
N.DAK.....	---	---	---	---	.2	.2	86	85
S.DAK.....	---	---	---	---	.2	.2	68	68
NEBR.....	.8	.6	331	230	7.0	5.0	3,019	1,927
KANS.....	.5	---	176	---	5.1	3.7	1,958	1,511
DEL.-MD..	2.9	2.0	562	420	22.8	20.0	4,392	3,764
VA.....	17.9	16.7	4,493	4,459	126.7	127.2	31,231	32,954
W.VA.....	.6	.4	127	83	4.5	3.4	942	711
N.C.....	.9	.6	184	109	7.5	5.7	1,687	1,052
S.C.....	12.0	12.7	4,848	4,966	91.7	94.6	34,926	37,679
GA.....	6.2	2.4	2,635	1,001	47.6	35.3	20,365	15,092
FLA.....	27.0	23.0	8,127	6,693	158.7	140.9	48,417	41,558
KY.....	2.4	.3	540	64	15.7	6.2	3,488	1,411
TENN.....	12.3	14.7	3,493	4,278	90.1	79.8	24,985	21,950
ALA.....	5.6	6.2	2,716	2,840	34.5	29.8	17,088	13,343
MISS.....	12.5	11.8	5,862	5,534	83.5	72.7	41,699	35,217
ARK.....	1.6	1.4	608	693	17.2	11.9	5,779	6,161
LA.....	20.5	20.4	9,020	9,302	146.7	145.6	67,233	68,399
CKLA.....	2.3	2.2	1,145	1,124	16.5	14.8	8,334	7,416
TEXAS....	41.0	31.5	22,796	15,939	280.5	218.2	155,234	111,814
MCNT.....	.1	.1	35	34	.8	.8	284	284
IDAHO....	.1	.1	34	31	.8	.8	258	256
WYO.....	---	---	---	---	.1	---	22	---
COLO.....	.3	.1	118	46	1.9	.9	797	420
N.MEX....	.1	.1	49	53	.9	.6	435	300
ARIZ.....	.4	.4	189	192	3.6	3.0	1,729	1,495
UTAH.....	.6	.5	195	178	4.1	3.6	1,439	1,322
NEV.....	.2	.1	79	40	1.6	1.4	593	526
WASH.....	1.8	1.9	598	597	11.7	11.0	3,874	3,582
OREG.....	2.0	1.5	664	507	11.6	10.7	3,547	3,356
CALIF....	25.5	21.7	7,318	7,378	199.9	175.3	53,935	55,625
48 STATES	506.4	443.2	122,055	107,413	3,863.8	3,561.3	893,186	812,440
HAWAII...	---	---	---	---	.5	---	109	---
U. S.....	506.4	443.2	122,055	107,413	3,864.3	3,561.3	893,295	812,440

1/ INCLUDES SLAUGHTER IN FEDERALLY INSPECTED AND OTHER SLAUGHTER PLANTS.  
EXCLUDES ANIMALS SLAUGHTERED ON FARMS.

2/ NEW ENGLAND INCLUDES MAINE, NEW HAMPSHIRE, VERMONT, MASSACHUSETTS, RHODE ISLAND  
AND CONNECTICUT. COMMERCIAL SLAUGHTER NOT ESTIMATED IN ALASKA.

COMMERCIAL HOG SLAUGHTER 1/

STATE 2/	AUGUST				JANUARY-AUGUST			
	NUMBER SLAUGHTERED		TOTAL LIVE WEIGHT		NUMBER SLAUGHTERED		TOTAL LIVE WEIGHT	
	1967	1968	1967	1968	1967	1968	1967	1968
	1,000 HEAD	1,000 HEAD	1,000 POUNDS	1,000 POUNDS	1,000 HEAD	1,000 HEAD	1,000 POUNDS	1,000 POUNDS
NEW ENG..	10.5	9.0	2,650	2,262	98.1	75.4	23,349	18,394
N.Y.....	95.0	80.0	21,375	18,560	747.5	700.5	172,575	162,346
N.J.....	39.5	35.0	7,347	6,510	319.0	330.0	59,966	62,031
PA.....	340.0	340.0	75,140	74,800	2,506.0	2,831.0	561,660	637,005
OHIO.....	401.0	399.0	90,225	87,381	3,116.0	3,155.0	708,413	714,061
IND.....	257.0	230.0	66,820	58,420	1,939.0	1,859.0	479,076	467,179
ILL.....	400.0	408.0	104,800	103,224	3,189.0	3,397.0	817,468	859,972
MICH.....	200.0	190.0	46,200	44,460	1,439.0	1,434.0	330,576	329,657
MISC.....	227.0	236.0	53,118	55,696	1,971.0	1,951.0	465,416	467,793
MINN.....	480.0	523.0	117,120	126,566	3,661.0	3,908.0	918,549	963,913
IOWA.....	1,535.0	1,613.0	380,680	380,668	12,342.0	12,964.0	3,063,802	3,157,927
MO.....	238.0	241.0	57,596	57,358	1,887.0	1,888.0	470,991	465,009
N.DAK.....	1.6	1.9	386	494	13.5	15.0	3,273	3,564
S.DAK.....	200.0	195.0	51,200	50,895	1,492.0	1,487.0	392,867	393,870
NEBR.....	300.0	238.0	78,300	57,596	2,396.0	2,346.0	625,954	599,039
KANS.....	206.0	154.0	48,616	36,344	1,578.0	1,530.0	381,946	366,449
DEL.-MD..	47.2	46.1	10,055	9,966	364.7	388.5	77,607	83,677
VA.....	248.0	247.0	53,568	55,822	1,934.0	2,002.0	429,436	452,993
W.VA.....	8.6	8.0	2,236	2,032	71.9	68.5	18,384	17,543
N.C.....	136.0	130.0	29,512	28,080	1,010.0	1,060.0	224,003	233,920
S.C.....	41.0	50.0	9,348	12,050	339.5	448.0	80,161	111,246
GA.....	135.0	140.0	29,160	30,100	1,107.0	1,190.0	242,434	263,618
FLA.....	38.5	37.5	8,432	8,175	298.0	332.0	65,300	73,731
KY.....	109.0	116.0	26,265	27,376	1,033.5	919.0	242,411	223,233
TENN.....	265.0	238.0	61,745	55,930	1,982.0	2,008.0	472,297	471,351
ALA.....	72.5	79.0	16,385	17,617	555.0	625.5	126,049	141,349
MISS.....	86.0	86.0	18,834	18,748	642.5	685.5	141,299	151,370
ARK.....	31.5	32.5	7,402	7,670	235.5	257.0	56,236	61,182
LA.....	14.5	16.7	3,084	3,590	130.1	138.2	27,662	29,335
OKLA.....	63.0	61.5	15,372	15,129	466.0	480.0	117,173	118,801
TEXAS.....	157.0	167.0	36,267	38,410	1,239.0	1,321.0	295,021	314,673
MCNT.....	31.5	32.5	7,245	7,475	246.0	240.0	57,143	56,028
IDAHO.....	10.7	12.4	2,311	2,703	85.4	92.0	18,697	20,193
WYO.....	2.8	2.8	650	616	23.3	22.9	5,412	5,397
COLO.....	55.5	67.5	12,543	15,255	424.5	542.5	98,830	124,778
N.MEX.....	8.7	8.9	1,984	2,020	64.0	70.9	14,794	16,388
ARIZ.....	12.2	16.0	2,891	3,776	101.0	120.0	23,441	28,243
UTAH.....	11.2	11.6	2,498	2,703	96.8	92.1	21,887	21,268
NEV.....	.1	.2	21	41	1.6	1.5	342	318
WASH.....	54.0	65.5	12,096	14,738	433.0	522.0	97,816	119,026
GREG.....	23.2	23.7	5,127	5,380	177.2	178.3	39,940	40,527
CALIF.....	138.0	132.0	30,912	31,680	1,070.0	1,081.0	236,139	244,828
48 STATES	6,732.1	6,721.3	1,607,520	1,578,316	52,825.6	54,757.3	12,705,795	13,093,225
HAWAII...	4.8	5.4	840	950	39.6	39.3	6,891	6,907
U. S.....	6,736.9	6,726.7	1,608,360	1,579,266	52,865.2	54,796.6	12,712,686	13,100,132

1/ INCLUDES SLAUGHTER IN FEDERALLY INSPECTED AND OTHER SLAUGHTER PLANTS.  
EXCLUDES ANIMALS SLAUGHTERED ON FARMS.  
2/ NEW ENGLAND INCLUDES MAINE, NEW HAMPSHIRE, VERMONT, MASSACHUSETTS, RHODE ISLAND  
AND CONNECTICUT. COMMERCIAL SLAUGHTER NOT ESTIMATED IN ALASKA.

COMMERCIAL SHEEP AND LAMB SLAUGHTER 1/

STATE 2/	AUGUST				JANUARY-AUGUST			
	NUMBER SLAUGHTERED		TOTAL LIVE WEIGHT		NUMBER SLAUGHTERED		TOTAL LIVE WEIGHT	
	1967	1968	1967	1968	1967	1968	1967	1968
	1,000 HEAD	1,000 HEAD	1,000 POUNDS	1,000 POUNDS	1,000 HEAD	1,000 HEAD	1,000 POUNDS	1,000 POUNDS
NEW ENG..	1.2	.9	107	86	11.6	10.5	990	880
N.Y.....	7.8	6.6	788	653	119.3	59.7	11,556	5,500
N.J.....	85.0	85.0	8,188	7,990	581.0	612.0	55,711	59,163
PA.....	19.2	13.6	1,670	1,170	121.7	106.2	10,728	9,180
OHIO.....	30.0	8.6	2,790	731	176.2	100.4	16,534	9,004
IND.....	1.5	1.2	130	102	8.2	8.2	744	707
ILL.....	64.5	58.5	6,321	5,850	480.0	468.0	49,450	49,059
MICH.....	36.0	34.5	3,636	3,484	253.0	246.0	26,303	23,725
MISC.....	1.6	1.1	157	112	10.0	8.3	1,010	843
MINN.....	53.0	50.5	5,406	5,050	448.0	393.0	47,716	41,586
IOWA.....	41.0	49.5	3,936	4,702	330.0	356.0	32,577	35,510
MO.....	33.0	39.0	3,267	3,861	248.0	267.4	25,337	27,169
N.DAK.....	1.6	4.8	160	542	59.0	63.0	6,364	6,822
S.DAK.....	37.5	34.5	3,862	3,515	299.5	291.0	32,439	31,496
NEBR.....	70.5	50.5	7,191	5,151	523.0	495.0	54,463	51,655
KANS.....	13.1	.3	1,258	29	168.8	133.7	16,399	13,074
DEL.-MC..	5.5	4.2	474	365	35.2	33.6	3,195	3,011
VA.....	.3	.3	30	29	2.2	2.2	227	231
W.VA.....	.8	.6	77	57	3.8	3.9	368	376
N.C.....	.2	.2	20	19	1.1	.9	112	85
S.C.....	.1	---	10	---	.3	.1	28	12
GA.....	---	---	---	---	.1	.1	7	10
FLA.....	.1	.2	8	10	.7	.8	54	62
KY.....	18.6	18.7	1,934	1,833	115.4	108.8	12,340	11,222
TENN.....	4.1	2.8	377	252	30.3	26.0	2,849	2,318
ALA.....	---	.1	---	10	.4	.5	41	51
MISS.....	---	---	---	---	.2	.1	17	10
ARK.....	---	---	---	---	.2	.1	16	10
LA.....	.2	.3	15	22	1.7	1.7	131	129
OKLA.....	.2	.3	23	32	1.2	2.6	142	271
TEXAS....	166.0	124.0	14,442	10,912	1,181.0	989.5	105,743	89,694
MONT.....	.7	.5	72	53	2.9	1.9	312	204
IDAHO....	1.6	1.5	171	160	8.2	7.7	892	843
WYO.....	.5	.5	53	52	1.8	2.5	202	268
COLC.....	107.0	96.5	10,486	9,843	1,035.5	933.5	110,221	100,574
N.MEX....	3.5	6.3	421	693	29.0	43.0	3,126	4,735
ARIZ.....	1.2	.2	134	20	12.7	12.8	1,383	1,418
UTAH.....	109.0	110.0	11,554	11,770	609.0	560.0	64,965	60,441
NEV.....	.2	.2	20	20	1.5	1.2	151	121
WASH.....	23.2	23.0	2,377	2,392	156.5	136.5	16,509	14,268
OREG.....	13.0	16.7	1,339	1,670	107.2	109.6	11,086	11,275
CALIF....	166.0	165.0	17,264	17,160	1,387.0	1,311.0	144,857	136,268
48 STATES	1,123.0	1,011.2	110,168	100,406	8,562.4	7,909.0	867,295	803,280
HAWAII...	---	---	---	---	.3	.1	32	10
U. S.....	1,123.0	1,011.2	110,168	100,406	8,562.7	7,909.1	867,327	803,290

1/ INCLUDES SLAUGHTER IN FEDERALLY INSPECTED AND OTHER SLAUGHTER PLANTS. EXCLUDES ANIMALS SLAUGHTERED ON FARMS.

2/ NEW ENGLAND INCLUDES MAINE, NEW HAMPSHIRE, VERMONT, MASSACHUSETTS, RHODE ISLAND AND CONNECTICUT. COMMERCIAL SLAUGHTER NOT ESTIMATED IN ALASKA.

LIVESTOCK SLAUGHTER, AVERAGE LIVE WEIGHT PER HEAD,  
AUGUST 1967 AND 1968 <sup>1/</sup>

STATE <sup>2/</sup>	CATTLE		CALVES		HOGS		SHEEP AND LAMBS	
	1967	1968	1967	1968	1967	1968	1967	1968
	POUNDS	POUNDS	POUNDS	POUNDS	POUNDS	POUNDS	POUNDS	POUNDS
NEW ENG..	1,066	1,076	107	106	243	251	89	96
N.Y.....	1,096	1,115	104	107	225	232	101	99
N.J.....	1,247	1,214	215	228	186	186	92	94
PA.....	1,054	1,080	137	127	221	220	87	86
OHIO.....	986	976	188	194	225	219	93	85
IND.....	1,028	991	208	203	260	254	87	85
ILL.....	983	1,001	161	173	262	253	98	100
MICH.....	1,023	1,044	151	159	231	234	101	101
WISC.....	1,092	1,096	132	139	234	236	98	102
MINN.....	1,025	1,048	186	202	244	242	102	100
IOWA.....	1,031	1,014	160	155	248	236	96	95
MO.....	1,010	984	270	278	242	238	99	99
N.DAK.....	1,040	1,017	---	---	241	260	100	113
S.DAK.....	1,038	1,020	---	---	256	261	103	102
NEBR.....	1,035	1,018	414	383	261	242	102	102
KANS.....	1,014	1,013	351	---	236	236	96	97
DEL.-MD..	1,100	1,049	194	210	213	216	86	87
VA.....	993	998	251	267	216	226	100	96
W.VA.....	1,005	981	212	207	260	254	96	95
N.C.....	951	912	205	181	217	216	100	94
S.C.....	844	788	404	391	228	241	100	---
GA.....	826	846	425	417	216	215	---	---
FLA.....	915	897	301	291	219	218	78	52
KY.....	929	925	225	213	241	236	104	98
TENN.....	927	922	284	291	233	235	92	90
ALA.....	898	870	485	458	226	223	---	100
MISS.....	829	822	469	469	219	218	---	---
ARK.....	865	875	505	495	235	236	---	---
LA.....	775	770	440	456	207	215	76	72
OKLA.....	875	921	498	511	244	246	114	108
TEXAS.....	862	869	556	506	231	230	87	88
MTNT.....	1,004	1,007	350	340	230	230	103	106
IDAHO.....	1,012	1,024	338	313	216	218	107	107
WYO.....	1,010	960	---	---	232	220	106	104
COLC.....	1,021	1,014	395	455	226	226	98	102
N.MEX.....	963	968	488	533	228	227	108	110
ARIZ.....	545	996	473	480	237	236	112	100
UTAH.....	984	990	325	356	223	233	106	107
NEV.....	977	983	395	400	214	205	100	100
WASH.....	1,022	1,013	332	314	224	225	102	104
OREG.....	990	984	332	338	221	227	103	100
CALIF.....	1,018	1,026	287	340	224	240	104	104
48 STATES	998	995	241	242	239	235	98	99
HAWAII...	992	980	---	---	175	176	---	---
U. S.....	996	995	241	242	239	235	98	99

<sup>1/</sup> INCLUDES SLAUGHTER IN FEDERALLY INSPECTED AND OTHER SLAUGHTER PLANTS.  
EXCLUDES ANIMALS SLAUGHTERED ON FARMS.

<sup>2/</sup> NEW ENGLAND INCLUDES MAINE, NEW HAMPSHIRE, VERMONT, MASSACHUSETTS, RHODE ISLAND  
AND CONNECTICUT. COMMERCIAL SLAUGHTER NOT ESTIMATED IN ALASKA.

UNITED STATES DEPARTMENT OF AGRICULTURE  
 STATISTICAL REPORTING SERVICE  
 WASHINGTON, D. C. 20250

POSTAGE AND FEES PAID  
 U. S. DEPARTMENT OF AGRICULTURE

OFFICIAL BUSINESS

(Continued from page 1)

POULTRY PRODUCTION DOWN 10 PERCENT FROM AUGUST 1967: Production of poultry meat during August totaled 880 million pounds, ready-to-cook basis. This was down 10 percent from August 1967 but 9 percent above July 1968.

INCREASE IN FEDERAL INSPECTION SINCE JANUARY 1, 1968

During the period January 1 through August 31, 1968 a total of 117 plants began slaughter under Federal inspection. In August these plants slaughtered 169,000 cattle, 12,000 calves, 96,000 hogs, and 37,000 sheep. Plants withdrawn from Federal inspection since January 1 slaughtered about 47,000 cattle, 600 calves, 50,700 hogs, and 58,000 sheep during the last full month of operation under Federal inspection. Animals slaughtered in plants withdrawn from Federal inspection cannot be used to obtain a net change in slaughter since some animals may be diverted to existing or new plants under Federal inspection. A number of plants under suspension from Federal inspection are not included in the data for plants withdrawn from Federal inspection.

Federally inspected slaughter as a percent of total commercial slaughter in August 1968 compared with August 1967 is as follows: Cattle 85.8 percent and 82.1 percent; Calves, 70.1 and 65.6 percent; hogs, 88.4 and 86.3 percent; sheep and lambs 91.9 and 89.1 percent.

The number of slaughter days during August included 22 weekdays and 5 Saturdays. There were 23 weekdays and 4 Saturdays in August 1967 and 22 weekdays and 4 Saturdays in July 1968.

Table 1.--Cattle: Percentages of number slaughtered in Federally inspected establishments, by classes, by weeks, 48 States, 1968 1/

Week ending	Percentages of total slaughter			
	Cows	Bulls	Heifers	Steers
August 3 .....	19.6	1.8	26.6	52.0
August 10 .....	20.3	1.8	27.1	50.8
August 17 .....	19.7	1.6	27.4	51.3
August 24 .....	20.0	1.7	28.0	50.3
August 31 .....	19.5	1.7	29.0	49.8
September 7 .....	19.3	1.8	27.9	51.0
September 14 .....	19.9	1.8	28.4	49.9

1/ As reported by Meat Inspectors, LSID, C&MS.

Table 2.--Cattle: Percentages of number slaughtered in Federally inspected establishments, by classes, monthly 48 States 1/

Month	Percentages of total slaughter				Total number slaughtered (000)
	Cows	Bulls	Heifers	Steers	
August 1967	20.0	1.5	26.3	52.2	2,461
July 1968	19.5	1.8	26.7	52.0	2,609
August 1968	19.9	1.7	27.8	50.6	2,648

1/ Based on voluntary reports from Federally inspected slaughtering plants.

\*\*\*\*\*

This report is made possible through the cooperative efforts of the Consumer and Marketing Service and the Statistical Reporting Service.