

livestock slaughter



September 1972

Release:
October 30, 1972
3:00 P. M. EST

SEPTEMBER RED MEAT PRODUCTION DOWN 6 PERCENT FROM 1971: Commercial production of red meat in the 48 States totaled 3,033 million pounds in September, down 6 percent from a year earlier, according to the Crop Reporting Board. Commercial meat production includes slaughter in federally inspected and other slaughter plants, but excludes animals slaughtered on farms.

BEEF PRODUCTION ABOUT SAME AS A YEAR EARLIER: Beef production in September was 1,883 million pounds, less than 1 percent change from the 1,889 million pounds in September 1971. Cattle kill totaled 3,045,700 head, down 3 percent from a year earlier. Live weight per head was 1,026 pounds, 18 pounds heavier than last year but the same as last month.

VEAL OUTPUT 24 PERCENT BELOW SEPTEMBER 1971: There were 34 million pounds of veal produced during September, down 24 percent from 1971. The 243,700 calves slaughtered is 23 percent below a year ago. Average live weight was 253 compared with 255 pounds in September 1971.

PORK PRODUCTION DOWN 13 PERCENT FROM A YEAR EARLIER: Pork production totaled 1,072 million pounds, 13 percent below a year ago. Hog kill totaled 6,809,400 head, down 15 percent from September 1971. Live weight per head was 237, up 1 pound from a year earlier. Lard rendered per 100 pounds of live weight was 7.0 pounds, compared with 8.3 in September 1971.

LAMB AND MUTTON DOWN 6 PERCENT FROM SEPTEMBER 1971: There were 44 million pounds of lamb and mutton produced in September, down 6 percent from last year but up 2 percent from last month. Sheep and lamb slaughter totaled 893,400 head, down 7 percent from last year. Average live weight was 100 pounds, the same as a year ago.

POULTRY PRODUCTION ABOUT SAME AS LAST YEAR: Production of poultry meat during September totaled 1,006 million pounds, ready-to-cook basis. This is about the same as last year but 5 percent below a month earlier.

(Continued on page 8)

Commercial Meat and Lard Production: 48 States, September 1972 with comparisons 1/

Kind	Sept. 1971	Aug. 1972	Sept. 1972	Sept. 1972 as % of		January-September 5/		
				Sept. 1971	Aug. 1972	1971	1972	1972 as % of 1971
	Million pounds			Percent		Million pounds		
Beef	1,889	1,985	1,883	100	95	16,319	16,489	101
Veal	45	38	34	76	89	391	323	83
Pork 2/	1,234	1,089	1,072	87	98	10,791	9,948	92
Lamb & Mutton	47	43	44	94	102	407	396	97
Total Red Meat	3,215	3,155	3,033	94	96	27,908	27,156	97
Poultry 3/	1,003	1,055	1,006	100	95	7,543	8,032	106
Lard 4/	156	126	113	72	90	1,458	1,168	80

1/ Excludes animals slaughtered on farms. 2/ Excludes lard and rendered pork fat. 3/ Chicken and turkey meat ready-to-cook basis, excludes slaughter on farms. 4/ Includes rendered pork fat. 5/ Accumulated totals based on unrounded data.

Commercial Livestock Slaughter: 48 States, September 1972 with comparisons 1/

Species	Unit	Sept. 1971	Aug. 1972	Sept. 1972	Sept. 1972 as % of		January-September 2/		
					Sept. 1971	Aug. 1972	1971	1972	1972 as % of 1971
					Percent		Percent		
CATTLE									
Number									
Fed. Insp.	thou.	2,787.7	2,923.2	2,789.3	100	95	23,660.2	24,022.0	102
Other	thou.	352.4	288.3	256.4	73	89	3,122.4	2,707.3	87
Total	thou.	3,140.1	3,211.5	3,045.7	97	95	26,782.6	26,729.3	100
Live Weight									
Per Head	lb.	1,008	1,026	1,026	102	100	1,026	1,034	101
Total	mil. lb.	3,166	3,295	3,125	99	95	27,488	27,627	101
CALVES									
Number									
Fed. Insp.	thou.	238.9	208.3	197.3	83	95	2,104.3	1,798.1	85
Other	thou.	76.8	49.3	46.4	60	94	673.8	501.4	74
Total	thou.	315.7	257.6	243.7	77	95	2,778.1	2,299.5	83
Live Weight									
Per Head	lb.	255	262	253	99	97	251	254	101
Total	mil. lb.	80	67	62	78	93	696	584	84
HOGS									
Number									
Fed. Insp.	thou.	7,378.8	6,510.0	6,419.7	87	99	64,364.0	58,504.8	91
Other	thou.	612.4	436.2	389.7	64	89	5,809.5	4,568.1	79
Total	thou.	7,991.2	6,946.2	6,809.4	85	98	70,173.5	63,072.9	90
Live Weight									
Per Head	lb.	236	235	237	100	101	238	238	100
Total	mil. lb.	1,890	1,634	1,612	85	99	16,695	15,021	90
SHEEP & LAMBS									
Number									
Fed. Insp.	thou.	919.0	839.8	866.5	94	103	7,673.0	7,387.3	96
Other	thou.	39.9	31.5	26.9	67	85	353.5	301.8	85
Total	thou.	958.9	871.3	893.4	93	103	8,026.5	7,689.1	96
Live Weight									
Per Head	lb.	100	101	100	100	99	103	104	101
Total	mil. lb.	95	88	90	95	102	829	803	97

1/ Excludes animals slaughtered on farms. 2/ Accumulated totals based on unrounded data.

COMMERCIAL CATTLE SLAUGHTER 1/

STATE 2/	SEPTEMBER				JANUARY-SEPTEMBER			
	NUMBER SLAUGHTERED		TOTAL LIVE WEIGHT		NUMBER SLAUGHTERED		TOTAL LIVE WEIGHT	
	1971	1972	1971	1972	1971	1972	1971	1972
	1,000 HEAD	1,000 HEAD	1,000 POUNDS	1,000 POUNDS	1,000 HEAD	1,000 HEAD	1,000 POUNDS	1,000 POUNDS
NEW ENG..	15.3	12.6	16,612	13,630	124.9	110.0	136,594	120,224
N.Y.....	27.5	29.0	30,662	32,654	254.0	250.9	288,507	285,545
N.J.....	21.5	19.4	26,445	22,989	228.3	181.0	289,276	229,314
PA.....	58.0	52.5	64,264	60,480	498.0	471.0	563,912	532,694
OHIO.....	100.0	88.5	102,100	91,066	848.0	807.5	872,953	828,225
IND.....	49.0	37.0	48,167	36,815	452.0	340.5	459,931	339,958
ILL.....	127.0	125.0	126,492	125,750	1,051.0	1,110.0	1,072,771	1,141,216
MICH.....	61.0	51.0	65,148	54,009	618.0	469.5	668,137	506,508
WISC.....	98.0	90.5	106,036	100,455	784.5	811.5	866,466	908,594
MINN.....	138.0	123.0	147,660	130,995	1,186.0	1,101.0	1,296,586	1,204,980
IAWA.....	385.0	396.0	395,780	407,484	3,156.0	3,454.0	3,332,290	3,607,361
MO.....	84.0	75.5	82,740	78,294	712.0	693.5	730,501	711,758
N.DAK....	18.5	19.4	19,222	20,001	152.5	150.9	164,907	161,898
S.DAK....	50.5	49.0	53,025	50,470	351.5	390.0	376,581	410,026
NEBR....	382.0	407.0	394,988	421,652	3,340.0	3,482.0	3,573,675	3,716,620
KANS.....	202.0	212.0	210,080	226,628	1,754.0	1,856.0	1,832,963	1,967,561
DEL.-MD..	8.8	8.1	9,176	8,808	77.2	75.7	81,877	81,410
VA.....	11.9	10.4	12,078	10,566	102.4	100.6	104,666	103,493
W.VA.....	5.3	4.8	5,035	5,227	42.2	40.0	43,325	41,785
N.C.....	15.2	12.9	14,516	12,358	121.4	112.1	117,769	108,132
S.C.....	7.1	6.3	5,637	5,210	59.2	53.8	48,458	44,932
GA.....	27.0	22.8	24,408	20,908	218.6	203.7	195,993	183,685
FLA.....	38.0	29.0	37,126	28,623	313.0	282.5	304,144	277,831
KY.....	17.8	15.8	16,518	14,568	163.4	145.2	154,307	139,010
TENN.....	54.5	45.0	52,920	45,675	436.5	391.5	423,973	389,462
ALA.....	8.9	6.9	7,369	6,024	83.3	67.7	71,121	59,064
MISS.....	30.0	25.5	24,900	21,522	228.6	210.0	194,951	179,057
ARK.....	15.6	13.0	14,134	12,012	136.8	119.1	124,952	109,833
LA.....	15.3	14.5	13,785	14,094	122.6	138.5	108,034	131,670
OKLA....	56.0	51.0	53,144	50,286	494.5	457.5	470,666	443,391
TEXAS....	305.0	300.0	268,705	270,600	2,751.0	2,646.0	2,433,401	2,384,447
MONT.....	20.3	17.1	20,483	17,750	150.2	155.7	153,761	162,310
IDAHO....	36.5	36.0	38,836	38,916	304.5	310.5	324,612	334,472
WYD.....	1.9	2.1	1,917	2,152	15.8	16.0	15,920	16,157
COLO....	206.0	213.0	210,326	227,697	1,719.0	1,831.0	1,787,532	1,954,828
N.MEX....	31.0	31.5	28,055	30,902	263.0	298.0	249,039	290,126
ARIZ.....	43.0	47.5	41,796	47,500	394.0	417.5	388,021	424,239
UTAH.....	23.6	22.0	23,860	23,782	202.4	201.5	210,116	221,627
NEV.....	2.1	2.1	2,136	2,148	14.6	19.6	14,770	19,840
WASH....	57.0	53.5	59,565	57,459	442.5	458.0	471,666	494,745
OREG....	31.0	25.5	31,527	27,591	245.2	213.3	251,654	226,545
CALIF....	254.0	242.0	259,080	249,260	2,170.0	2,085.0	2,217,288	2,132,530
48 STATES	3,140.1	3,045.7	3,166,453	3,125,010	26,782.6	26,729.3	27,488,066	27,627,103
HAWAII...	5.7	5.1	5,449	4,901	48.7	48.0	46,664	44,387
U. S.....	3,145.8	3,050.8	3,171,902	3,129,911	26,831.3	26,777.3	27,534,730	27,671,490

1/ INCLUDES SLAUGHTER UNDER FEDERAL INSPECTION AND OTHER COMMERCIAL SLAUGHTER, EXCLUDES FARM SLAUGHTER.

2/ NEW ENGLAND INCLUDES MAINE, NEW HAMPSHIRE, VERMONT, MASSACHUSETTS, RHODE ISLAND AND CONNECTICUT. COMMERCIAL SLAUGHTER NOT ESTIMATED IN ALASKA.

COMMERCIAL CALF SLAUGHTER 1/

STATE 2/	SEPTEMBER				JANUARY-SEPTEMBER			
	NUMBER SLAUGHTERED		TOTAL LIVE WEIGHT		NUMBER SLAUGHTERED		TOTAL LIVE WEIGHT	
	1971	1972	1971	1972	1971	1972	1971	1972
	1,000 HEAD	1,000 HEAD	1,000 POUNDS	1,000 POUNDS	1,000 HEAD	1,000 HEAD	1,000 POUNDS	1,000 POUNDS
NEW ENG..	21.3	18.7	2,409	2,061	175.6	159.1	19,290	16,688
N.Y.....	61.5	55.5	7,072	5,772	542.0	481.0	59,194	52,132
N.J.....	29.0	22.3	8,352	6,066	246.2	207.7	69,446	64,648
PA.....	29.0	21.1	3,828	2,469	241.6	187.4	34,685	26,452
OHIO.....	4.6	3.3	1,007	739	41.4	35.8	8,380	7,403
IND.....	4.4	3.8	950	866	33.0	32.1	6,856	6,910
ILL.....	8.1	6.4	1,604	1,421	105.8	59.1	19,402	12,649
MICH.....	9.9	7.4	1,851	1,406	87.9	71.8	14,897	13,084
WISC.....	22.7	14.4	3,632	2,563	203.3	173.8	30,774	29,644
MINN.....	.6	1.5	128	297	5.3	5.3	1,067	1,050
IOWA.....	15.7	10.9	2,920	2,016	152.2	118.3	27,358	21,476
MO.....	1.6	1.1	461	333	11.3	11.6	3,038	3,352
N.DAK....	---	---	---	---	.1	.1	40	39
S.DAK....	---	---	---	---	.1	.1	40	40
NEBR.....	.4	.3	145	107	2.9	3.1	1,057	1,094
KANS.....	.1	---	35	---	.6	.3	252	115
DEL.-MD..	1.7	1.1	418	270	15.1	12.1	3,443	2,897
VA.....	10.2	6.5	2,968	1,970	89.5	62.2	25,680	17,730
W.VA.....	.2	.2	43	45	1.8	1.4	398	287
N.C.....	1.2	.3	266	84	4.8	7.4	1,184	1,822
S.C.....	11.1	9.4	4,951	4,606	97.6	88.5	44,922	43,813
GA.....	.2	1.3	83	578	9.1	15.3	3,723	6,781
FLA.....	10.1	7.7	3,212	2,580	77.4	72.0	24,502	16,248
KY.....	.3	.2	74	52	1.8	2.1	440	531
TENN.....	11.1	7.9	3,619	2,504	91.7	79.8	30,524	26,290
ALA.....	.4	.3	182	116	2.4	3.0	1,015	1,244
MISS.....	7.4	3.2	4,048	1,658	54.6	35.0	31,373	19,953
ARK.....	.4	.2	215	89	3.4	2.4	1,728	1,187
LA.....	19.4	15.0	10,457	8,505	157.1	132.1	83,027	72,243
OKLA.....	.3	.3	142	136	4.4	3.0	2,071	1,377
TEXAS....	18.8	13.7	10,284	8,138	181.1	126.9	99,608	74,118
MONT.....	---	---	---	---	.1	---	40	---
IDAHO....	---	.1	---	33	.6	.4	215	145
WYO.....	---	---	---	---	.1	.2	30	58
COLO.....	---	---	---	---	.6	---	191	---
N.MEX....	---	---	---	---	---	---	---	---
ARIZ.....	.2	.1	103	50	1.9	1.9	963	938
UTAH.....	.3	.2	118	93	2.4	1.6	971	674
NEV.....	.1	.1	42	40	.9	.9	347	334
WASH.....	.8	.6	266	206	6.8	6.2	2,220	2,021
OREG.....	1.0	.6	389	210	6.5	5.0	2,254	1,783
CALIF....	11.6	8.0	4,188	3,608	117.1	93.5	39,740	34,350
48 STATES	315.7	243.7	80,462	61,687	2,778.1	2,299.5	696,385	583,600
HAWAII...	---	---	---	---	---	---	---	---
U. S.....	315.7	243.7	80,462	61,687	2,778.1	2,299.5	696,385	583,600

1/ INCLUDES SLAUGHTER UNDER FEDERAL INSPECTION AND OTHER COMMERCIAL SLAUGHTER, EXCLUDES FARM SLAUGHTER.

2/ NEW ENGLAND INCLUDES MAINE, NEW HAMPSHIRE, VERMONT, MASSACHUSETTS, RHODE ISLAND AND CONNECTICUT. COMMERCIAL SLAUGHTER NOT ESTIMATED IN ALASKA.

COMMERCIAL HOG SLAUGHTER 1/

STATE 2/	SEPTEMBER				JANUARY-SEPTEMBER			
	NUMBER SLAUGHTERED		TOTAL LIVE WEIGHT		NUMBER SLAUGHTERED		TOTAL LIVE WEIGHT	
	1971	1972	1971	1972	1971	1972	1971	1972
	1,000 HEAD	1,000 HEAD	1,000 POUNDS	1,000 POUNDS	1,000 HEAD	1,000 HEAD	1,000 POUNDS	1,000 POUNDS
NEW ENG..	7.1	5.2	1,759	1,337	61.1	54.7	15,168	13,949
N.Y.....	62.5	65.0	14,188	14,950	710.0	666.0	163,410	153,985
N.J.....	45.0	29.5	8,595	5,812	404.5	297.0	82,292	58,573
PA.....	368.0	323.0	81,696	71,060	3,153.0	3,028.0	706,849	666,262
OHIO.....	394.0	326.0	88,650	73,350	3,448.0	2,990.0	772,672	681,541
IND.....	336.0	302.0	84,000	75,500	3,301.0	2,729.0	848,280	686,309
ILL.....	471.0	523.0	118,221	132,319	4,328.0	4,723.0	1,082,791	1,165,729
MICH.....	332.0	307.0	89,972	74,601	2,735.0	2,896.0	664,340	702,305
WISC.....	317.0	269.0	74,495	63,215	2,827.0	2,489.0	666,985	588,535
MINN.....	540.0	425.0	130,680	103,700	4,410.0	3,743.0	1,079,792	912,155
IOWA.....	2,038.0	1,700.0	480,968	401,200	17,737.0	15,401.0	4,269,430	3,720,449
MO.....	211.0	144.0	50,007	33,120	1,794.0	1,412.0	440,714	344,480
N.DAK....	2.9	2.0	670	446	25.3	20.7	5,742	4,702
S.DAK....	247.0	197.0	61,503	48,462	2,111.0	1,789.0	533,876	440,175
NEBR.....	232.0	222.0	58,000	53,502	2,032.0	1,892.0	504,255	465,575
KANS.....	192.0	180.0	45,888	41,940	1,702.0	1,615.0	415,389	392,975
DEL.-MD..	45.5	39.4	9,698	8,680	404.4	386.7	87,512	84,147
VA.....	281.0	245.0	63,787	56,595	2,521.0	2,325.0	571,451	538,554
W.VA.....	6.7	6.6	1,675	1,828	61.0	56.4	14,993	15,144
N.C.....	174.0	139.0	38,454	30,719	1,564.0	1,353.0	336,781	300,165
S.C.....	44.0	31.0	10,076	7,378	383.0	336.0	88,711	79,740
GA.....	179.0	142.0	39,559	31,098	1,644.0	1,480.0	363,257	324,932
FLA.....	54.5	32.0	11,118	7,040	492.5	386.0	99,483	78,465
KY.....	170.0	152.0	40,800	38,000	1,520.0	1,388.0	363,094	341,727
TENN.....	283.0	240.0	65,656	59,040	2,412.0	2,171.0	571,573	514,820
ALA.....	77.0	62.5	17,633	14,875	655.0	680.0	151,557	161,989
MISS.....	128.0	98.0	27,776	21,756	1,084.0	912.0	237,495	203,408
ARK.....	43.0	30.5	10,019	7,747	394.5	331.0	92,175	82,474
LA.....	18.4	13.9	3,901	3,100	169.3	150.2	35,714	32,947
OKLA.....	98.0	77.0	24,206	19,250	853.0	671.0	213,385	172,459
TEXAS....	181.0	147.0	41,630	36,750	1,659.0	1,443.0	389,275	348,088
MONT.....	34.0	27.0	7,820	6,372	307.0	274.2	71,617	65,285
IDAHO....	13.7	9.7	3,028	2,173	119.5	95.0	26,577	21,227
WYO.....	1.8	1.6	412	370	16.9	15.9	3,857	3,611
COLOR....	98.0	75.5	22,442	17,592	858.5	762.5	198,852	177,121
N.MEX....	11.0	9.0	2,519	2,097	89.8	87.8	20,887	20,452
ARIZ.....	17.5	15.3	4,025	413	163.9	132.9	38,035	27,696
UTAH.....	8.2	6.8	1,755	1,455	71.0	67.9	15,134	14,481
NEV.....	.3	.2	66	42	2.9	3.4	610	734
WASH.....	69.5	58.0	16,194	13,340	625.5	538.0	144,848	124,846
OREG.....	20.6	13.7	4,656	3,137	171.4	145.6	39,221	33,506
CALIF....	138.0	117.0	31,602	26,793	1,151.5	1,135.0	266,495	254,829
48 STATES	7,991.2	6,809.4	1,889,799	1,612,154	70,173.5	63,072.9	16,694,574	15,020,546
HAWAII...	4.1	4.3	742	821	36.1	39.0	6,755	7,305
U. S.....	7,995.3	6,813.7	1,890,541	1,612,975	70,209.6	63,111.9	16,701,329	15,027,851

1/ INCLUDES SLAUGHTER UNDER FEDERAL INSPECTION AND OTHER COMMERCIAL SLAUGHTER, EXCLUDES FARM SLAUGHTER.

2/ NEW ENGLAND INCLUDES MAINE, NEW HAMPSHIRE, VERMONT, MASSACHUSETTS, RHODE ISLAND AND CONNECTICUT. COMMERCIAL SLAUGHTER NOT ESTIMATED IN ALASKA.

COMMERCIAL SHEEP AND LAMB SLAUGHTER 1/

STATE 2/	SEPTEMBER				JANUARY-SEPTEMBER			
	NUMBER SLAUGHTERED		TOTAL LIVE WEIGHT		NUMBER SLAUGHTERED		TOTAL LIVE WEIGHT	
	1971	1972	1971	1972	1971	1972	1971	1972
	1,000 HEAD	1,000 HEAD	1,000 POUNDS	1,000 POUNDS	1,000 HEAD	1,000 HEAD	1,000 POUNDS	1,000 POUNDS
NEW ENG..	1.3	1.1	114	102	8.9	9.4	759	788
N.Y.....	5.5	4.2	539	420	52.9	51.2	4,749	4,931
N.J.....	74.5	48.0	7,078	4,608	603.5	503.0	59,413	50,263
PA.....	10.5	10.0	934	960	98.5	93.3	8,989	8,871
OHIO.....	6.9	5.6	669	532	56.4	51.5	5,431	5,005
IND.....	1.7	1.7	151	156	11.4	15.2	980	1,382
ILL.....	41.0	28.0	4,387	2,884	413.5	324.5	44,769	34,377
MICH.....	32.5	32.5	3,250	3,218	288.0	300.5	28,974	30,796
WISC.....	.6	.5	57	47	2.2	2.3	211	221
MINN.....	21.6	18.6	2,182	1,897	175.7	161.6	18,501	17,095
IOWA.....	46.5	36.5	4,650	3,686	349.0	331.0	36,252	34,558
MO.....	1.7	1.2	167	120	20.6	12.9	2,053	1,282
N.DAK....	.1	.1	10	10	.5	.6	54	61
S.DAK....	30.0	34.5	3,060	3,519	282.0	301.5	29,810	31,585
NEBR.....	110.0	84.5	10,890	8,704	744.5	642.5	77,476	68,111
KANS.....	.4	.5	40	47	3.4	3.6	362	360
DEL.-MD..	4.5	5.2	446	499	34.5	39.3	3,362	3,859
VA.....	.2	.2	19	21	1.3	1.4	127	137
W.VA.....	.3	.2	31	22	2.6	1.9	264	203
N.C.....	.1	---	9	---	.5	.6	49	56
S.C.....	---	---	---	---	.1	.1	5	10
GA.....	---	---	---	---	.1	---	10	---
FLA.....	.1	---	7	---	.6	.6	41	38
KY.....	21.3	22.7	2,236	2,361	163.5	156.7	17,577	16,659
TENN.....	7.3	8.6	694	851	50.6	61.8	4,904	6,176
ALA.....	---	---	---	---	.4	.1	36	11
MISS.....	---	.1	---	8	.1	.2	10	17
ARK.....	---	---	---	---	.2	.1	20	10
LA.....	.3	.3	21	28	3.3	3.1	251	272
OKLA.....	.2	.1	20	11	1.9	1.9	188	193
TEXAS....	120.0	127.0	10,800	11,557	1,247.0	1,142.0	116,850	108,211
MONT.....	.3	.3	30	30	1.5	1.7	150	169
IDAHO....	1.4	1.4	147	150	8.3	9.2	884	999
WYO.....	.3	.3	34	33	1.8	2.3	198	257
COLO.....	185.0	180.0	18,500	18,360	1,246.0	1,414.0	136,393	156,704
N.MEX....	7.1	10.8	731	1,253	68.7	92.2	7,521	10,052
ARIZ.....	.1	.2	11	21	1.1	1.1	119	117
UTAH.....	67.0	61.5	7,035	6,212	472.5	391.5	50,181	42,422
NEV.....	.4	.4	40	39	2.7	2.7	270	273
WASH.....	19.7	19.0	2,068	2,071	159.4	147.1	17,540	16,240
OREG.....	7.5	7.6	795	775	93.8	71.9	9,969	7,584
CALIF....	131.0	140.0	13,624	14,560	1,353.0	1,341.0	143,622	142,951
48 STATES	958.9	893.4	95,476	89,772	8,026.5	7,689.1	829,324	803,306
HAWAII...	---	---	---	---	---	---	---	---
U. S.....	958.9	893.4	95,476	89,772	8,026.5	7,689.1	829,324	803,306

1/ INCLUDES SLAUGHTER UNDER FEDERAL INSPECTION AND OTHER COMMERCIAL SLAUGHTER, EXCLUDES FARM SLAUGHTER.

2/ NEW ENGLAND INCLUDES MAINE, NEW HAMPSHIRE, VERMONT, MASSACHUSETTS, RHODE ISLAND AND CONNECTICUT. COMMERCIAL SLAUGHTER NOT ESTIMATED IN ALASKA.

LIVESTOCK SLAUGHTER, AVERAGE LIVE WEIGHT PER HEAD,
SEPTEMBER 1971 AND 1972 1/

STATE 2/	CATTLE		CALVES		HOGS		SHEEP AND LAMBS	
	1971	1972	1971	1972	1971	1972	1971	1972
	POUNDS	POUNDS	POUNDS	POUNDS	POUNDS	POUNDS	POUNDS	POUNDS
NEW ENG..	1,086	1,082	113	110	248	257	88	93
N.Y.....	1,115	1,126	115	104	227	230	98	100
N.J.....	1,230	1,185	288	272	191	197	95	96
PA.....	1,108	1,152	132	117	222	220	89	96
OHIO.....	1,021	1,029	219	224	225	225	97	95
IND.....	983	995	216	228	250	250	89	92
ILL.....	996	1,006	198	222	251	253	107	103
MICH.....	1,068	1,059	187	190	271	243	100	99
WISC.....	1,082	1,110	160	178	235	235	95	94
MINN.....	1,070	1,065	214	198	242	244	101	102
IDWA.....	1,028	1,029	186	185	236	236	100	101
MO.....	985	1,037	288	303	237	230	98	100
N.DAK....	1,039	1,031	---	---	231	223	100	100
S.DAK....	1,050	1,030	---	---	249	246	102	102
NEBR....	1,034	1,036	362	358	250	241	99	103
KANS.....	1,040	1,069	350	---	239	233	100	94
DEL.-MD..	1,043	1,087	246	245	213	220	99	96
VA.....	1,015	1,016	291	303	227	231	94	105
W.VA.....	950	1,089	216	225	250	277	104	112
N.C.....	955	958	222	279	221	221	90	---
S.C.....	794	827	446	490	229	238	---	---
GA.....	904	917	415	445	221	219	---	---
FLA.....	977	987	318	335	204	220	67	---
KY.....	928	922	248	261	240	250	105	104
TENN.....	971	1,015	326	317	232	246	95	99
ALA.....	828	873	456	387	229	238	---	---
MISS.....	830	844	547	518	217	222	---	80
ARK.....	906	924	538	444	233	254	---	---
LA.....	901	972	539	567	212	223	69	94
OKLA.....	949	986	473	453	247	250	100	108
TEXAS....	881	902	547	594	230	250	90	91
MONT.....	1,009	1,038	---	---	230	236	100	100
IDAHO....	1,064	1,081	---	327	221	224	105	107
WYO.....	1,009	1,025	---	---	229	231	115	111
COLO.....	1,021	1,069	---	---	229	233	100	102
N.MEX....	905	981	---	---	229	233	103	116
ARIZ.....	972	1,000	513	500	230	27	108	107
UTAH.....	1,011	1,081	395	464	214	214	105	101
NEV.....	1,017	1,023	420	400	221	209	100	97
WASH.....	1,045	1,074	332	343	233	230	105	109
OREG.....	1,017	1,082	389	350	226	229	106	102
CALIF....	1,020	1,030	361	451	229	229	104	104
48 STATES	1,008	1,026	255	253	236	237	100	100
HAWAII...	956	961	---	---	181	191	---	---
U. S.....	1,008	1,026	255	253	236	237	100	100

1/ INCLUDES SLAUGHTER UNDER FEDERAL INSPECTION AND OTHER COMMERCIAL SLAUGHTER, EXCLUDES FARM SLAUGHTER.

2/ NEW ENGLAND INCLUDES MAINE, NEW HAMPSHIRE, VERMONT, MASSACHUSETTS, RHODE ISLAND AND CONNECTICUT. COMMERCIAL SLAUGHTER NOT ESTIMATED IN ALASKA.

(Continued from page 1)

INCREASE IN FEDERAL INSPECTION SINCE OCTOBER 1, 1971:

Between October 1, 1971 and September 30, 1972, a total of 562 plants began slaughter under Federal inspection. During September 1972, these plants slaughtered 72,000 cattle, 12,000 calves, 137,000 hogs, and 31,000 sheep and lambs. Plants withdrawn from Federal inspection since October 1, 1971 slaughtered about 26,000 cattle, less than 1,000 calves, 19,000 hogs, and 6,000 sheep and lambs during the last full month of operation under Federal inspection. Animals slaughtered in plants withdrawn from Federal inspection cannot be used to obtain a net change in slaughter since these animals may be diverted to existing or new plants under Federal inspection. Plants under suspension from Federal inspection are not included in the data for plants withdrawn from Federal inspection.

Federally inspected slaughter as a percent of total commercial slaughter in September 1972 compared with September 1971 is as follows: cattle, 91.6 and 88.8 percent; calves, 81.0 and 75.7 percent; hogs, 94.3 and 92.3 percent; sheep and lambs, 97.0 and 95.8 percent.

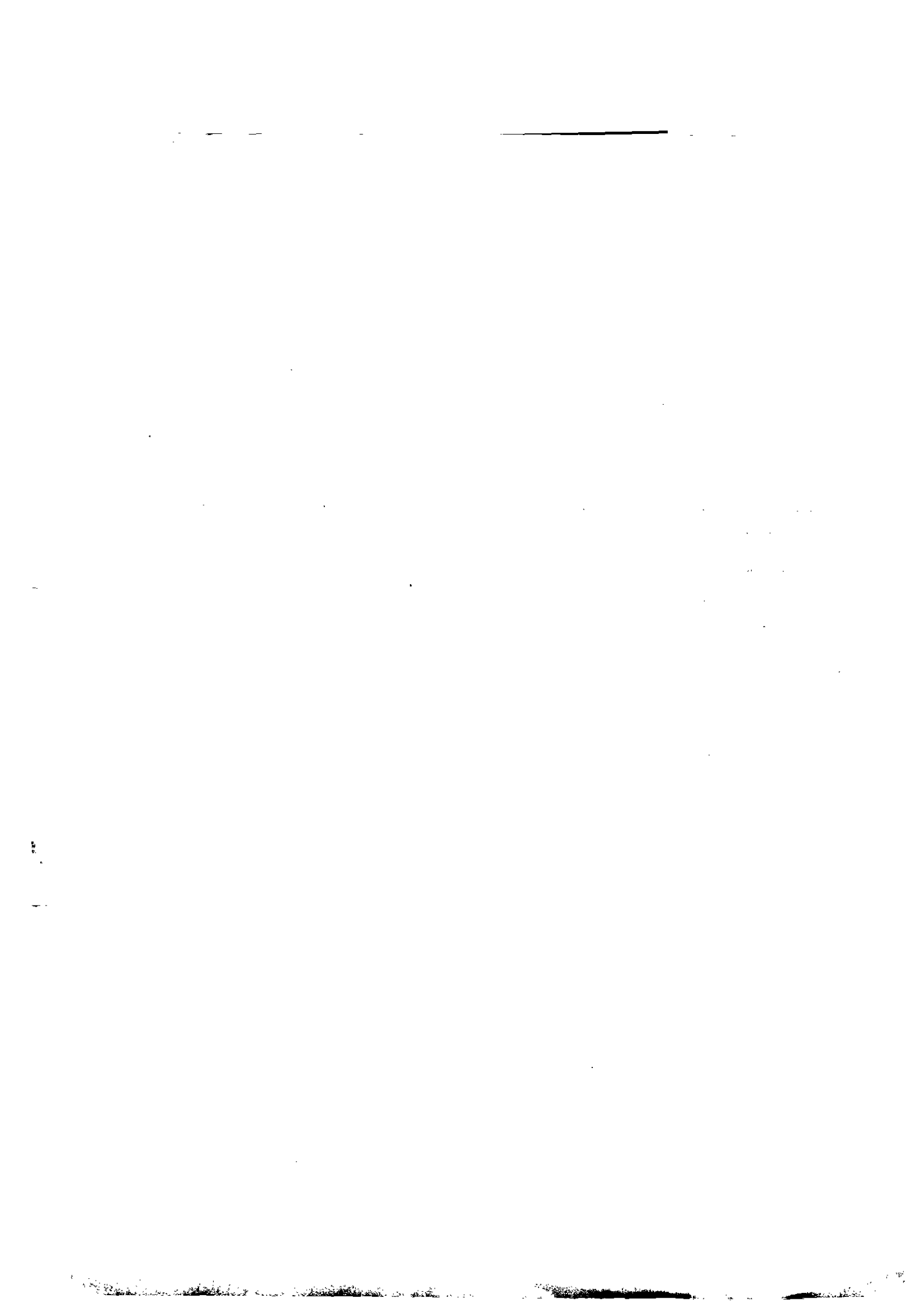
September 1972 included 20 weekdays and 5 Saturdays, 1 less weekday but 1 more Saturday than September 1971.

**Classification of Livestock Slaughtered under Federal Inspection
48 States, September 1972 with comparisons 1/**

Species	Sept. 1971	Aug. 1972	Sept. 1972	Jan.-Sept. 1971-1972		Sept. 1971	Aug. 1972	Sept. 1972	Jan.-Aug. 1971-1972	
	: 1,000 head					: Percent of total				
CATTLE:										
Steers	1,448	1,574	1,486	12,866	13,285	52.0	53.9	53.3	54.4	55.3
Heifers	801	807	833	6,219	6,283	28.7	27.6	29.8	26.3	26.2
Cows	486	482	418	4,151	4,011	17.4	16.5	15.0	17.5	16.7
Bulls & stags	53	60	52	424	443	1.9	2.0	1.9	1.8	1.8
Total	2,788	2,923	2,789	23,660	24,022	100.0	100.0	100.0	100.0	100.0
Canners & Cutters 2/	236	267	263	2,134	2,137	8.5	9.1	9.4	9.0	8.9
HOGS:										
Sows	498	438	411	3,935	3,241	6.8	6.7	6.4	6.1	5.5
Barrows & gilts	6,819	6,007	5,953	59,878	54,731	92.4	92.3	92.7	93.0	93.6
Stags & boars	62	65	56	551	533	.8	1.0	.9	.9	.9
Total	7,379	6,510	6,420	64,364	58,505	100.0	100.0	100.0	100.0	100.0
SHEEP AND LAMBS:										
Lambs & yearlings	845	770	766	7,051	6,884	92.0	91.7	88.5	91.9	93.2
Sheep	74	70	100	622	504	8.0	8.3	11.5	8.1	6.8
Total	919	840	866	7,673	7,388	100.0	100.0	100.0	100.0	100.0

1/ Species totals and cattle classes of steers, heifers, cows, and bulls reported by Meat Inspectors, FOD, APHIS. Canners and cutters and classification of hogs and sheep based on packer reports. 2/ Included in cattle classification.

This report made possible through the cooperative efforts of the Agricultural Marketing Service, Animal and Plant Health Inspection Service and the Statistical Reporting Service.



UNITED STATES DEPARTMENT OF AGRICULTURE
 STATISTICAL REPORTING SERVICE
 CROP REPORTING BOARD
 WASHINGTON, D. C. 20250

November 14, 1972

S E P T E M B E R E R R A T A

The report Livestock Slaughter, September 1972, MtAn 1-3 (10-72) should be corrected as follows:

Page 8 - Classification of Livestock Slaughter Under Federal Inspection

Species	September:	January-September	September:	January-September
	1972	1972	1972	1972
	1,000 head		Percent of Total	
<u>SHEEP AND LAMBS:</u>				
Lambs & yearlings	800	6,918	92.4	93.6
	766	6,884	88.5	93.2
Sheep	66	470	7.6	6.4
	100	504	11.5	6.8
Total	866	7,388	100.0	100.0

