



Livestock Slaughter

Released October 19, 2001, by the National Agricultural Statistics Service (NASS), Agricultural Statistics Board, U.S. Department of Agriculture. For information on "Livestock Slaughter" call Betty Johnston at (515) 284-4340, office hours 8:00 a.m. to 4:30 p.m. CT.

Monthly Record Low for Veal and Lamb Production

Commercial red meat production for the United States totaled 3.66 billion pounds in September, down 5 percent from the 3.86 billion pounds produced in September 2000.

September 2000 contained 21 weekdays (including one holiday) and 5 Saturdays.
September 2001 contained 20 weekdays (including one holiday) and 5 Saturdays.

Beef production, at 2.12 billion pounds, was 7 percent below the previous year, a record September tonnage. Cattle slaughter totaled 2.81 million head, down 7 percent from September 2000. The average live weight was up 9 pounds from the previous year, at 1,240 pounds.

Veal production totaled 15 million pounds, 10 percent below September a year ago. Calf slaughter totaled 78,600 head, down 16 percent from September 2000. The average live weight was 20 pounds above last year, at 313 pounds.

Pork production totaled 1.51 billion pounds, down 3 percent from the previous year. Hog kill totaled 7.81 million head, 4 percent below September 2000. The average live weight was 3 pounds above the previous year, at 262 pounds.

Lamb and mutton production, at 16 million pounds, was down 6 percent from September 2000. Sheep slaughter totaled 243,300 head, 10 percent below last year. The average live weight was 135 pounds, up 5 pounds from September a year ago.

January - September red meat production was 33.6 billion pounds, 3 percent below the previous year. Accumulated beef production was down 4 percent to last year, veal was down 11 percent, pork was virtually unchanged, and lamb and mutton was down 4 percent.

Commercial Red Meat Production: United States ¹

Class	Sep 2000	Aug 2001	Sep 2001	Sep 01 % of		Jan - Sep ²		
				Sep 2000	Aug 2001	2000	2001	01 as % of 00
	<i>Million Pounds</i>	<i>Million Pounds</i>	<i>Million Pounds</i>	<i>Percent</i>	<i>Percent</i>	<i>Million Pounds</i>	<i>Million Pounds</i>	<i>Percent</i>
Beef	2,275	2,424	2,120	93	87	20,265	19,403	96
Veal	17	17	15	90	87	161	144	89
Pork	1,554	1,600	1,513	97	95	13,918	13,897	100
Lamb & Mutton	17	19	16	94	88	172	165	96
Total Red Meat	3,863	4,060	3,664	95	90	34,517	33,608	97

¹ Based on packers' dressed weights and excludes farm slaughter.

² Accumulated totals and percentages based on unrounded data.

Federally Inspected Red Meat Production: United States ¹

Class	Sep 2000	Aug 2001	Sep 2001	Sep 01 % of		Jan - Sep ²		
				Sep 2000	Aug 2001	2000	2001	01 as % of 00
	<i>Million Pounds</i>	<i>Million Pounds</i>	<i>Million Pounds</i>	<i>Percent</i>	<i>Percent</i>	<i>Million Pounds</i>	<i>Million Pounds</i>	<i>Percent</i>
Beef	2,244	2,396	2,090	93	87	19,991	19,142	96
Veal	16	17	14	90	86	152	140	92
Pork	1,533	1,579	1,492	97	95	13,727	13,719	100
Lamb & Mutton	17	18	16	93	87	167	159	96
Total Red Meat	3,810	4,009	3,612	95	90	34,038	33,160	97

¹ Based on packers' dressed weights and excludes farm slaughter.

² Accumulated totals and percentages based on unrounded data.

Livestock Slaughter: Number and Average Weights, United States ¹

Species	Unit	Sep 2000	Aug 2001	Sep 2001	Sep 01 % of		Jan - Sep ²		
					Sep 2000	Aug 2001	2000	2001	01 % of 00
					<i>Percent</i>	<i>Percent</i>			<i>Percent</i>
Cattle No.									
Fed. Insp.	Thou	2,984.1	3,192.8	2,757.6	92	86	27,005.8	26,088.9	97
Other	Thou	50.3	45.9	49.8	99	108	452.6	431.4	95
Comm'l. ³	Thou	3,034.5	3,238.7	2,807.3	93	87	27,458.5	26,520.3	97
Live Wt/Hd									
Fed. Insp.	Lbs	1,233	1,229	1,243	101	101	1,219	1,212	99
Other	Lbs	1,091	1,089	1,082	99	99	1,075	1,078	100
Comm'l.	Lbs	1,231	1,228	1,240	101	101	1,216	1,210	99
Calves No.									
Fed. Insp.	Thou	91.3	92.1	76.6	84	83	813.2	723.2	89
Other	Thou	2.2	2.0	2.0	94	100	37.2	17.2	46
Comm'l. ³	Thou	93.5	94.2	78.6	84	83	850.4	740.4	87
Live Wt/Hd									
Fed. Insp.	Lbs	288	302	308	107	102	310	321	103
Other	Lbs	413	432	413	100	96	429	415	97
Comm'l.	Lbs	293	303	313	107	104	315	322	102
Hogs No.									
Fed. Insp.	Thou	7,991.8	8,246.6	7,686.5	96	93	71,114.8	70,410.4	99
Other	Thou	126.6	127.8	124.0	98	97	1,146.0	1,067.4	93
Comm'l. ³	Thou	8,118.4	8,374.4	7,810.5	96	93	72,260.8	71,477.8	99
Live Wt/Hd									
Fed. Insp.	Lbs	260	258	262	101	102	262	263	101
Other	Lbs	228	226	229	100	101	231	229	99
Comm'l.	Lbs	259	258	262	101	102	261	263	101
Sheep&Lambs No.									
Fed. Insp.	Thou	256.7	258.0	229.7	90	89	2,468.6	2,251.6	91
Other	Thou	12.8	15.2	13.5	106	89	115.4	109.3	95
Comm'l. ³	Thou	269.5	273.2	243.3	90	89	2,584.1	2,361.0	91
Live Wt/Hd									
Fed. Insp.	Lbs	132	139	137	104	99	136	142	105
Other	Lbs	101	107	107	106	100	102	106	104
Comm'l.	Lbs	130	137	135	104	99	134	141	105

¹ Excludes slaughter on farms.

² Accumulated totals and percentages based on unrounded data.

³ Totals may not equal sum of the parts due to rounding.

Commercial Red Meat Production: By State and United States ¹

State	Sep 2000	Aug 2001	Sep 2001	Sep 01 as % of ²	
				Sep 2000	Aug 2001
	<i>Million Pounds</i>	<i>Million Pounds</i>	<i>Million Pounds</i>	<i>Percent</i>	<i>Percent</i>
AL	3.8	3.7	3.9	102	107
AK		0.1			
AZ	30.6	38.2	33.0	108	86
AR	4.6	3.9	5.0	107	129
CA	88.8	101.0	88.8	100	88
CO	185.5	202.9	179.7	97	89
DE-MD	2.8	2.9	2.3	81	80
FL	4.5	5.5	4.9	108	89
GA	24.6	28.3	24.1	98	85
HI	1.1	1.2	0.9	76	73
ID	48.1	59.3	56.0	116	94
IL	228.6	228.6	219.6	96	96
IN	105.6	110.1	99.2	94	90
IA	483.0	505.1	481.1	100	95
KS	538.1	521.1	445.7	83	86
KY	36.9	36.4	34.8	94	96
LA	1.4	1.4	1.4	97	98
MI	29.2	32.5	32.5	111	100
MN	161.7	178.0	170.4	105	96
MS	23.6	26.4	23.7	101	90
MO	65.1	36.9	33.0	51	89
MT	1.9	1.6	1.2	64	77
NE	609.2	653.9	614.1	101	94
NV	0.1	0.1	0.1	142	126
N ENG ³	1.9	1.7	1.6	83	93
NJ	4.6	5.4	4.5	97	83
NM	0.9	0.9	0.9	105	96
NY	4.3	3.9	3.2	74	81
NC	162.4	168.9	157.1	97	93
ND	2.1	2.6	2.3	109	87
OH	26.5	26.0	25.1	95	97
OK	69.4	81.9	75.3	109	92
OR	3.6	4.0	3.4	97	87
PA	98.3	103.2	89.7	91	87
SC	17.2	19.6	17.2	100	88
SD	75.9	86.9	83.3	110	96
TN	19.8	18.1	18.3	93	101
TX	430.9	458.4	372.8	87	81
UT	43.4	49.9	42.6	98	85
VA	60.5	68.4	63.2	104	92
WA	55.3	68.3	48.3	87	71
WV	0.7	0.5	0.6	87	122
WI	105.9	111.7	99.2	94	89
WY	0.5	0.6	0.3	69	57
US	3,862.9	4,059.9	3,664.4	95	90

¹ Includes total beef, veal, pork, lamb, and mutton.

² Percentages based on unrounded data.

³ N ENG includes CT, ME, MA, NH, RI, and VT.

**Commercial Cattle Slaughter: By State and United States,
September 2000 and 2001 ¹**

State	Number Slaughtered		Total Live Weight		Average Live Weight	
	2000	2001	2000	2001	2000	2001
	<i>1,000 Head</i>	<i>1,000 Head</i>	<i>1,000 Pounds</i>	<i>1,000 Pounds</i>	<i>Pounds</i>	<i>Pounds</i>
AL	0.4	0.5	317	379	882	789
AK		0.1		56		1,115
AZ	41.8	44.2	51,319	55,223	1,228	1,251
AR	1.3	1.1	1,389	1,120	1,035	1,013
CA	86.7	84.6	108,181	107,364	1,247	1,269
CO	224.6	215.9	282,393	273,464	1,257	1,266
DE-MD	2.8	2.5	3,437	3,039	1,226	1,229
FL	6.3	7.3	6,995	7,512	1,112	1,036
GA	34.2	34.4	38,955	39,288	1,139	1,142
HI	1.3	0.8	1,262	866	945	1,042
ID	63.6	73.6	78,662	91,475	1,237	1,242
IL	88.7	84.6	107,783	103,400	1,215	1,223
IN	3.1	3.1	3,281	3,326	1,067	1,057
IA	52.7	56.5	65,524	70,448	1,242	1,247
KS	684.0	563.1	835,411	689,864	1,221	1,225
KY	0.9	1.2	822	1,051	871	903
LA	1.9	1.4	1,615	1,291	862	893
MI	31.8	35.3	43,963	48,954	1,383	1,386
MN	52.0	55.3	71,109	74,624	1,368	1,350
MS						
MO	6.6	7.3	8,394	9,239	1,263	1,264
MT	2.3	1.5	2,549	1,649	1,108	1,116
NE	644.4	648.5	812,986	817,974	1,262	1,261
NV	0.1	0.1	84	123	1,044	1,083
N ENG ²	2.0	1.7	2,191	1,847	1,093	1,105
NJ	2.0	2.0	2,326	2,466	1,142	1,227
NM	1.4	1.6	1,381	1,531	966	971
NY	5.4	3.7	5,740	4,270	1,069	1,165
NC	12.3	14.4	13,322	15,302	1,083	1,062
ND	0.8	0.7	891	817	1,161	1,158
OH	12.3	12.8	14,634	14,302	1,186	1,116
OK	2.9	2.7	2,842	2,683	990	979
OR	1.2	1.5	1,605	1,796	1,288	1,219
PA	79.6	73.2	102,281	91,946	1,285	1,256
SC						
SD	20.8	24.3	29,245	33,585	1,404	1,381
TN	2.0	1.0	1,472	877	737	856
TX	580.4	488.5	679,135	583,131	1,170	1,194
UT	55.6	53.1	67,530	66,599	1,214	1,255
VA	1.4	2.1	1,316	2,135	956	1,009
WA	70.1	62.6	89,067	77,993	1,271	1,246
WV	0.9	0.8	884	693	940	896
WI	139.0	124.5	177,980	162,871	1,280	1,308
WY	0.5	0.4	653	478	1,193	1,180
US ³	3,034.5	2,807.3	3,734,196	3,481,256	1,231	1,240

¹ Includes slaughter under Federal inspection and other Commercial slaughter, excludes farm slaughter.

² N ENG includes CT, ME, MA, NH, RI, and VT.

³ States with no data printed are still included in the US total. Data not printed to avoid disclosing individual operations.

**Commercial Calf Slaughter: By State and United States,
September 2000 and 2001 ¹**

State	Number Slaughtered		Total Live Weight		Average Live Weight	
	2000	2001	2000	2001	2000	2001
	<i>1,000 Head</i>	<i>1,000 Head</i>	<i>1,000 Pounds</i>	<i>1,000 Pounds</i>	<i>Pounds</i>	<i>Pounds</i>
AL						
AK						
AZ						
AR						
CA	10.1	8.4	1,541	1,275	152	152
CO						
DE-MD	0.1	0.1	22	20	346	354
FL						
GA						
HI						
ID						
IL	8.9	8.5	3,822	3,628	428	428
IN	9.4	6.5	2,846	2,307	302	355
IA						
KS						
KY						
LA	1.1	0.9	560	467	494	503
MI	3.6	3.2	1,291	1,356	355	422
MN						
MS						
MO	0.2	0.2	53	76	328	432
MT						
NE						
NV						
N ENG ²	2.8	2.0	292	220	105	109
NJ	8.9	8.3	3,925	3,713	440	445
NM						
NY	14.1	10.8	1,138	902	81	84
NC	0.2	0.1	75	51	397	397
ND						
OH	0.1	0.1	16	10	205	182
OK	0.1	0.1	25	33	450	449
OR						
PA	16.5	14.3	5,762	4,978	348	349
SC						
SD						
TN						
TX	2.8	2.1	818	768	289	364
UT						
VA	0.1	0.1	18	19	282	333
WA						
WV						
WI	10.8	10.3	4,529	4,327	418	420
WY						
US ³	93.5	78.6	27,405	24,637	293	313

¹ Includes slaughter under Federal inspection and other Commercial slaughter, excludes farm slaughter.

² N ENG includes CT, ME, MA, NH, RI, and VT.

³ States with no data printed are still included in the US total. Data not printed to avoid disclosing individual operations.

**Commercial Hog Slaughter: By State and United States,
September 2000 and 2001 ¹**

State	Number Slaughtered		Total Live Weight		Average Live Weight	
	2000	2001	2000	2001	2000	2001
	<i>1,000 Head</i>	<i>1,000 Head</i>	<i>1,000 Pounds</i>	<i>1,000 Pounds</i>	<i>Pounds</i>	<i>Pounds</i>
AL	11.2	10.9	5,707	5,751	511	528
AK						
AZ	0.4	0.3	87	79	228	233
AR						
CA	183.3	183.5	39,883	40,762	218	222
CO	1.7	1.6	433	358	256	226
DE-MD	2.9	1.4	746	370	255	258
FL	8.7	8.1	1,688	1,457	194	180
GA	15.4	11.8	4,846	3,079	316	261
HI	2.8	2.5	582	505	208	202
ID						
IL	816.3	776.3	212,232	205,815	260	265
IN	533.9	501.3	135,213	127,300	253	254
IA	2,279.4	2,250.6	594,809	586,961	261	261
KS	37.0	26.8	11,196	8,529	303	318
KY	185.7	173.7	48,464	45,631	261	263
LA	2.0	1.8	428	400	218	225
MI	9.3	8.9	3,212	3,103	346	350
MN	651.3	683.5	167,776	176,548	258	258
MS						
MO	324.9	144.0	81,364		250	
MT	1.6	0.9	408	225	258	250
NE	536.6	559.8	137,826	144,994	257	259
NV						
N ENG ²	2.8	2.3	698	563	249	248
NJ	9.0	8.2	837	803	93	98
NM	0.5	0.5	100	96	213	209
NY	3.9	3.3	957	627	249	190
NC	832.8	777.5	207,835	197,512	250	254
ND	10.2	11.8	2,365	2,703	232	230
OH	101.5	95.5	26,085	24,527	257	257
OK	346.9	357.1	90,838	98,714	262	276
OR	16.0	15.2	4,065	3,792	254	249
PA	207.5	191.4	52,011	47,907	251	250
SC						
SD	324.2	346.1	82,276	88,515	254	256
TN	60.3	55.1	28,207	26,697	468	484
TX	31.0	31.2	9,567	9,383	308	301
UT	5.2	5.1	1,331	960	258	188
VA	317.7	318.4	79,778	82,379	251	259
WA	2.0	1.6	524	418	266	256
WV	0.9	0.9	240	248	253	274
WI	33.6	33.5	14,060	14,445	419	432
WY	0.6	0.4	154	84	262	231
US ³	8,118.4	7,810.5	2,104,149	2,045,377	259	262

¹ Includes slaughter under Federal inspection and other Commercial slaughter, excludes farm slaughter.

² N ENG includes CT, ME, MA, NH, RI, and VT.

³ States with no data printed are still included in the US total. Data not printed to avoid disclosing individual operations.

**Commercial Sheep and Lamb Slaughter: By State and United States,
September 2000 and 2001 ¹**

State	Number Slaughtered		Total Live Weight		Average Live Weight	
	2000	2001	2000	2001	2000	2001
	<i>1,000 Head</i>	<i>1,000 Head</i>	<i>1,000 Pounds</i>	<i>1,000 Pounds</i>	<i>Pounds</i>	<i>Pounds</i>
AL						
AK						
AZ		0.1		12		122
AR						
CA						
CO	93.6	75.7	13,123	11,119	140	147
DE-MD	2.0	2.3	219	258	109	110
FL						
GA	0.4	0.4	34	40	77	102
HI						
ID	0.4	0.5	53	62	122	131
IL						
IN	3.0	2.9	294	302	99	104
IA	40.8	38.4	5,467	5,616	134	146
KS	0.2	0.1	24	16	113	118
KY	1.0	0.7	163	103	169	140
LA	0.2	0.1	18	9	85	71
MI	17.7	15.9	2,225	1,900	126	120
MN	0.2	0.4	31	51	128	130
MS						
MO	0.4	0.6	40	64	91	104
MT	0.4	0.4	55	47	127	124
NE	0.1	0.1	7	11	111	121
NV	0.1	0.2	18	23	127	140
N ENG ²	2.3	2.0	231	202	101	101
NJ	8.5	8.2	867	780	102	95
NM	2.3	2.1	263	236	115	112
NY	1.5	1.3	154	125	101	95
NC	0.1	0.1	7	5	109	103
ND						
OH	1.3	1.9	136	220	102	113
OK		0.1		4		74
OR	0.8	1.0	107	149	135	155
PA	4.7	3.9	383	364	82	95
SC						
SD	1.2	0.7	120	79	100	107
TN	0.3	0.4	25	31	96	71
TX	32.4	34.2	4,228	4,791	131	140
UT	2.7	2.3	378	278	141	121
VA	1.6	1.5	160	146	103	100
WA						
WV						
WI	1.1	0.9	140	124	125	137
WY	0.2	0.1	24	18	136	127
US ³	269.5	243.3	35,113	32,872	130	135

¹ Includes slaughter under Federal inspection and other Commercial slaughter, excludes farm slaughter.

² N ENG includes CT, ME, MA, NH, RI, and VT.

³ States with no data printed are still included in the US total. Data not printed to avoid disclosing individual operations.

**Classification of Livestock Slaughtered Under Federal Inspection:
United States**

Item	Sep 2000	Aug 2001	Sep 2001	Jan - Sep ¹		Sep 2000	Aug 2001	Sep 2001	Jan - Sep ¹	
	1,000 Head	1,000 Head	1,000 Head	2000	2001	Percent of Total	Percent of Total	Percent of Total	2000	2001
Class ²										
Cattle										
Steers	1,492	1,605	1,355	13,658	12,901	50.0	50.3	49.1	50.6	49.5
Heifers	1,004	1,049	931	8,921	8,560	33.7	32.9	33.7	33.0	32.8
All Cows	436	480	422	3,959	4,160	14.6	15.0	15.3	14.6	16.0
Dairy Cows	213	211	190	1,931	1,918	7.1	6.6	6.9	7.1	7.4
Other Cows	223	269	232	2,028	2,242	7.5	8.4	8.4	7.5	8.6
Bulls & Stags	51	59	50	468	468	1.7	1.8	1.8	1.7	1.8
Total ¹	2,984	3,193	2,758	27,006	26,089	100.0	100.0	100.0	100.0	100.0
Hogs										
Barrows & Gilts	7,718	7,963	7,425	68,646	67,928	96.6	96.6	96.6	96.5	96.5
Sows	251	256	238	2,231	2,242	3.1	3.1	3.1	3.1	3.2
Stags & Boars	23	27	24	238	241	0.3	0.3	0.3	0.3	0.3
Total ¹	7,992	8,247	7,686	71,115	70,410	100.0	100.0	100.0	100.0	100.0
Sheep										
Mature Sheep	14	12	10	127	106	5.3	4.8	4.5	5.2	4.7
Lambs & Yrlngs	243	246	219	2,341	2,146	94.7	95.2	95.5	94.8	95.3
Total ¹	257	258	230	2,469	2,252	100.0	100.0	100.0	100.0	100.0
Average Dressed Weight ³										
	<i>Pounds</i>	<i>Pounds</i>	<i>Pounds</i>	<i>Pounds</i>	<i>Pounds</i>					
Cattle	756	754	762	744	737					
Steers ⁴	812	811	819	795	789					
Heifers ⁴	743	739	750	730	725					
All Cows ⁴	575	577	582	580	586					
Bulls & Stags ⁴	882	895	905	900	892					
Calves & Vealers	178	186	190	191	198					
Hogs	193	192	195	194	196					
Barrow Gilts ⁵	189	188	191	190	192					
Sows ⁵	311	317	319	308	316					
Stags & Boars ⁵	235	226	236	226	225					
Sheep	65	69	68	68	71					
Mature Sheep ⁶	66	62	62	62	62					
Lamb & Yrlngs ⁶	65	70	68	68	71					

¹ Total and percentages based on unrounded data.

² Species totals and classification reported by meat inspectors, Inspection Operations, FSIS.

³ Based on packer reports.

⁴ Included in cattle average dressed weight.

⁵ Included in hog average dressed weight.

⁶ Included in sheep average dressed weight.

**Federally Inspected Slaughter: By Region and United States,
September 2001¹**

Standard Federal Regions	Cattle							Calves
	Total ²	Steers	Heifers	Cows			Bulls & Stags	Total
				All	Dairy	Other		
	<i>1,000 Head</i>	<i>1,000 Head</i>	<i>1,000 Head</i>	<i>1,000 Head</i>	<i>1,000 Head</i>	<i>1,000 Head</i>	<i>1,000 Head</i>	<i>1,000 Head</i>
1	1.5	0.3	0.1	0.9	0.8	0.1	0.2	2.0
2	5.5	1.2	0.4	3.4	3.3	0.1	0.5	19.1
3	75.8	39.0	7.1	27.7	20.5	7.2	2.0	14.4
4	68.3	0.7	0.3	57.4	20.2	37.2	9.9	2.1
5	294.2	133.0	44.7	107.9	70.5	37.4	8.6	28.4
6	488.2	266.1	154.5	58.8	11.2	47.6	8.8	1.8
7	1,267.7	668.2	531.3	60.7	2.6	58.1	7.5	0.1
8	291.0	119.1	149.0	18.1	3.8	14.3	4.8	
9	129.1	60.1	7.5	58.4	47.4	11.0	3.2	8.2
10	136.4	67.0	35.9	28.7	9.9	18.8	4.8	0.6
US ²	2,757.6	1,354.6	930.7	422.0	190.3	231.7	50.3	76.6
	Hogs				Sheep			
	Total ²	Barrows & Gilts	Sows	Stags & Boars	Total ²	Mature Sheep	Lambs & Yearlings	
	<i>1,000 Head</i>	<i>1,000 Head</i>	<i>1,000 Head</i>	<i>1,000 Head</i>	<i>1,000 Head</i>	<i>1,000 Head</i>	<i>1,000 Head</i>	<i>1,000 Head</i>
1	1.8	1.8			1.7	0.3	1.4	
2	11.2	11.0	0.2		9.4	1.3	8.1	
3	510.4	508.9	1.5		6.8	0.5	6.3	
4	1,188.8	1,112.9	74.2	1.7	1.7	0.9	0.8	
5	2,041.8	1,956.8	83.5	1.6	31.3	3.3	28.0	
6	389.3	367.7	21.3	0.2	32.9	1.8	31.0	
7	2,971.9	2,910.0	42.0	19.9	38.8		38.8	
8	361.2	345.8	15.5		78.4	1.5	76.9	
9	179.5	179.4	0.1		26.9	0.4	26.5	
10	30.6	30.3	0.2		1.8	0.4	1.4	
US ²	7,686.5	7,424.6	238.4	23.5	229.7	10.4	219.3	

¹ States included in regions are as follows: 1- CT, ME, NH, VT, MA, & RI; 2- NY & NJ; 3- DE-MD, PA, WV, & VA; 4- AL, FL, GA, KY, MS, NC, SC, & TN; 5- IL, IN, MI, MN, OH, & WI; 6- AR, LA, NM, OK, & TX; 7- IA, KS, MO, & NE; 8- CO, MT, ND, SD, UT, & WY; 9- AZ, CA, HI & NV; 10- AK, ID, OR, & WA.

² Totals may not add due to rounding.

**Federally Inspected Slaughter: By Region and United States,
January - September 2001 * ¹**

Standard Federal Regions	Cattle							Calves
	Total ²	Steers	Heifers	Cows			Bulls & Stags	Total
				All	Dairy	Other		
	<i>1,000 Head</i>	<i>1,000 Head</i>	<i>1,000 Head</i>	<i>1,000 Head</i>	<i>1,000 Head</i>	<i>1,000 Head</i>	<i>1,000 Head</i>	<i>1,000 Head</i>
1	13.6	1.8	1.2	9.0	8.5	0.5	1.5	19.1
2	51.8	10.9	3.3	31.8	26.7	5.0	5.9	188.3
3	734.4	357.8	68.4	287.5	213.0	74.5	20.7	127.1
4	665.5	8.9	2.6	561.9	190.9	371.0	92.2	14.4
5	2,722.6	1,147.3	378.9	1,116.2	763.3	352.9	80.2	281.2
6	4,917.9	2,611.6	1,675.3	540.7	100.6	440.1	90.3	13.0
7	11,754.4	6,235.3	4,789.7	666.0	63.7	602.4	63.4	0.5
8	2,708.3	1,262.4	1,210.3	189.9	33.8	156.1	45.6	0.1
9	1,208.6	574.2	95.1	510.3	417.2	93.0	29.1	73.7
10	1,311.8	691.0	335.3	246.4	100.2	146.1	39.1	5.9
US ²	26,088.9	12,901.2	8,560.1	4,159.7	1,917.9	2,241.8	468.0	723.2
	Hogs				Sheep			
	Total ²	Barrows & Gilts	Sows	Stags & Boars	Total ²	Mature Sheep	Lambs & Yearlings	
	<i>1,000 Head</i>	<i>1,000 Head</i>	<i>1,000 Head</i>	<i>1,000 Head</i>	<i>1,000 Head</i>	<i>1,000 Head</i>	<i>1,000 Head</i>	<i>1,000 Head</i>
1	15.1	14.6	0.3	0.1	16.3	3.5	12.8	
2	102.3	99.0	2.8	0.5	101.2	13.6	87.6	
3	4,666.4	4,650.4	15.8	0.2	66.4	4.8	61.6	
4	10,984.9	10,292.1	678.8	14.0	13.7	7.8	5.9	
5	18,770.8	17,874.8	871.5	24.4	305.3	34.1	271.2	
6	3,580.9	3,381.7	193.8	5.4	321.4	19.5	301.9	
7	27,194.1	26,631.3	367.2	195.7	327.3	0.5	326.8	
8	3,145.2	3,036.2	108.9	0.1	824.3	15.8	808.5	
9	1,667.5	1,666.2	0.8	0.5	265.4	5.0	260.3	
10	283.4	281.3	1.9	0.2	10.4	1.4	9.1	
US ²	70,410.4	67,927.5	2,241.8	241.1	2,251.6	106.0	2,145.6	

* Accumulated totals based on unrounded data.

¹ States included in regions are as follows: 1- CT, ME, NH, VT, MA, & RI; 2- NY & NJ; 3- DE-MD, PA, WV, & VA; 4- AL, FL, GA, KY, MS, NC, SC, & TN; 5- IL, IN, MI, MN, OH, & WI; 6- AR, LA, NM, OK, & TX; 7- IA, KS, MO, & NE; 8- CO, MT, ND, SD, UT, & WY; 9- AZ, CA, HI & NV; 10- AK, ID, OR, & WA.

² Totals may not add due to rounding.

**Federally Inspected Slaughter: By State and United States,
September 2001**

State	Cattle						Calves	
	Total ¹	Steers	Heifers	Cows			Bulls & Stags	Total
				All	Dairy	Other		
	<i>1,000 Head</i>	<i>1,000 Head</i>	<i>1,000 Head</i>	<i>1,000 Head</i>	<i>1,000 Head</i>	<i>1,000 Head</i>	<i>1,000 Head</i>	<i>1,000 Head</i>
AL								
AK	0.1							
AZ	44.0	37.0	0.4	6.6	6.6			
AR	0.7	0.2	0.1	0.4	0.1	0.3	0.1	
CA	84.2	22.8	6.9	51.4	40.7	10.7	3.1	8.2
CO	215.3	97.2	117.7	0.4	0.4		0.1	
DE-MD	2.5	1.6	0.6	0.3	0.3			0.1
FL	7.3	0.1		6.6	1.5	5.1	0.4	
GA	33.6			27.9	1.5	26.4	5.6	
HI	0.8	0.2	0.2	0.3		0.3	0.1	
ID	72.5	32.1	14.9	21.7	5.9	15.8	3.8	
IL	81.7	46.4	35.3					8.5
IN	0.4	0.2	0.1					6.5
IA	55.9	35.8	19.9				0.1	
KS	560.6	290.0	270.6					
KY	0.4	0.3	0.1					
LA								
MI	33.5	26.0	1.4	6.0	6.0		0.1	3.1
MN	52.4	8.6	3.2	35.1	13.3	21.8	5.5	
MS								
MO	4.9	0.8	0.5	3.2	0.7	2.5	0.4	0.1
MT	0.4	0.2	0.1				0.1	
NE	646.3	341.6	240.3	57.4	1.9	55.5	7.0	
NV	0.1	0.1						
N ENG ²	1.5	0.3	0.1	0.9	0.8	0.1	0.2	2.0
NJ	2.0	0.7	0.2	0.9	0.8	0.1	0.3	8.3
NM								
NY	3.5	0.5	0.2	2.6	2.6		0.2	10.8
NC	14.0	0.1		11.4	5.8	5.6	2.5	0.1
ND	0.3	0.1	0.1					
OH	4.9	0.3	0.1	4.2	3.7	0.5	0.2	
OK	0.7			0.7	0.4	0.3		
OR	1.3	0.6	0.1	0.3	0.3		0.1	
PA	73.0	37.3	6.4	27.3	20.2	7.1	2.0	14.2
SC								
SD	22.6	1.3	2.3	14.6	2.3	12.3	4.4	
TN	0.6	0.2	0.1	0.3	0.2	0.1		
TX	485.6	265.9	154.4	56.7	9.7	47.0	8.7	1.8
UT	52.3	20.3	28.8	2.9	1.0	1.9	0.3	
VA	0.3	0.1	0.1	0.1	0.1			0.1
WA	62.6	34.3	20.9	6.6	3.6	3.0	0.8	
WV	0.1							
WI	121.3	51.4	4.6	62.5	47.5	15.0	2.8	10.3
WY								
US ³	2,757.6	1,354.6	930.7	422.0	190.3	231.7	50.3	76.6

¹ Totals may not add due to rounding.

² N ENG includes CT, ME, MA, NH, RI, VT

³ States with no data printed are still included in the US total. Data not printed to avoid disclosing individual operations.

**Federally Inspected Slaughter: By State and United States,
September 2001**

State	Hogs				Sheep		
	Total ¹	Barrows & Gilts	Sows	Stags & Boars	Total ¹	Mature Sheep	Lambs & Yearlings
	<i>1,000 Head</i>	<i>1,000 Head</i>	<i>1,000 Head</i>	<i>1,000 Head</i>	<i>1,000 Head</i>	<i>1,000 Head</i>	<i>1,000 Head</i>
AL	10.0		8.4	1.7			
AK							
AZ							
AR							
CA	176.9	176.8					
CO	0.9	0.8			75.6		75.5
DE-MD	1.4	1.4			2.3	0.1	2.2
FL	8.1	7.9	0.2				
GA	5.3	5.2					
HI	2.5	2.5					
ID					0.3		0.3
IL	748.3	702.1	44.9	1.2			
IN	496.8	496.8			2.3	1.5	0.8
IA	2,248.5	2,194.0	34.6	19.9	38.2		38.2
KS	23.9	16.6	7.3				
KY	173.1	167.7	5.4		0.7	0.6	0.1
LA							
MI	7.4	3.6	3.7	0.2	15.6	1.8	13.8
MN	680.8	680.8			0.2		0.2
MS							
MO	141.1	141.1			0.6		0.5
MT	0.2	0.2			0.1		0.1
NE	558.4	558.3					
NV					0.2		0.1
N ENG ²	1.8	1.8			1.7	0.3	1.4
NJ	8.2	8.0	0.2		8.2	0.9	7.3
NM							
NY	3.0	3.0			1.2	0.4	0.9
NC	764.3	759.5	4.8				
ND	11.6	11.6					
OH	81.6	73.2	8.4				
OK	355.4	350.6	4.8				
OR	15.0	14.9	0.1		0.8	0.1	0.7
PA	191.1	190.8	0.3		3.8	0.4	3.4
SC							
SD	344.9	329.5	15.4		0.5		0.5
TN	55.0	0.7	54.3		0.4		0.4
TX	21.7	15.7	5.7	0.2	31.9	1.1	30.8
UT	3.7	3.7			1.8	1.5	0.3
VA	317.9	316.7	1.2		0.7		0.6
WA	1.4	1.4			0.6	0.3	0.3
WV	0.1	0.1					
WI	26.9	0.3	26.4	0.2			
WY							
US ³	7,686.5	7,424.6	238.4	23.5	229.7	10.4	219.3

¹ Totals may not add due to rounding.

² N ENG includes CT, ME, MA, NH, RI, and VT

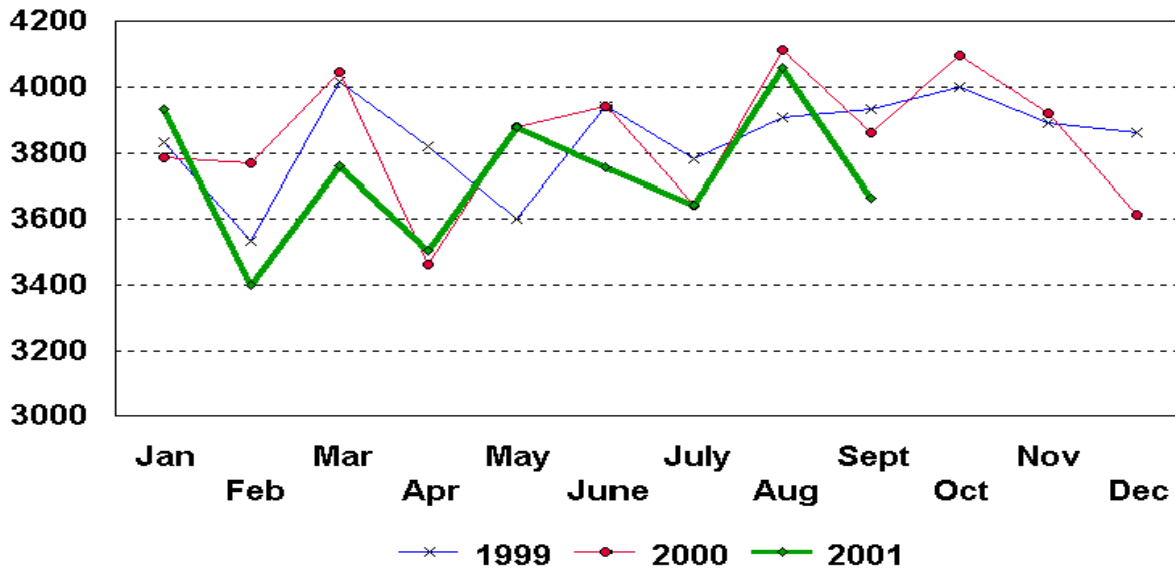
³ States with no data printed are still included in the US total. Data not printed to avoid disclosing individual operations.

Federally Inspected Slaughter: Percent of Total Commercial Slaughter by Species, United States

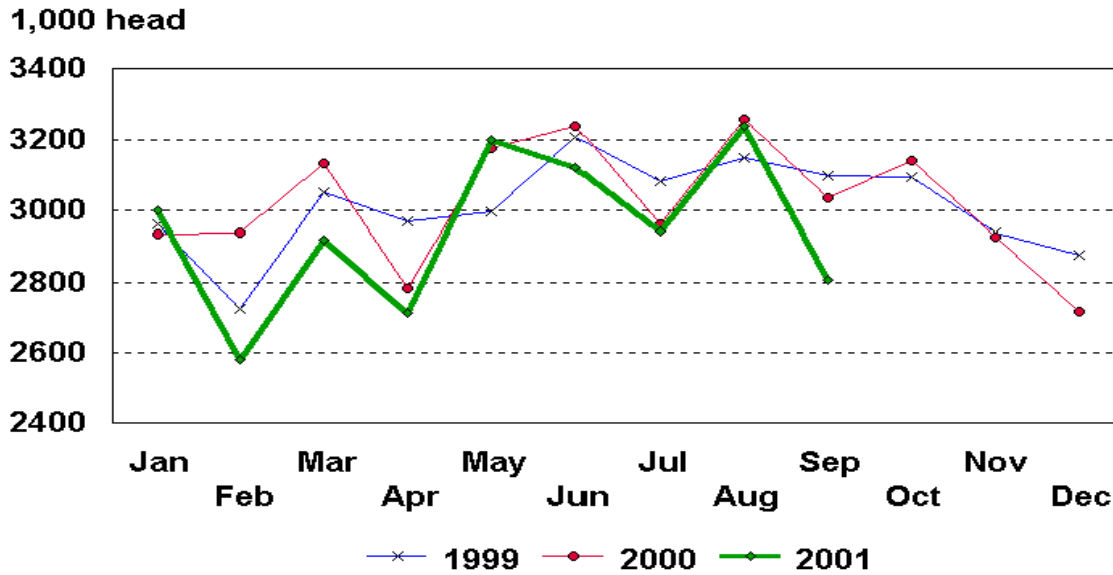
Species	Sep 2000	Aug 2001	Sep 2001	Jan - Sep	
	Percent	Percent	Percent	2000	2001
Cattle	98.3	98.6	98.2	98.4	98.4
Calves	97.7	97.8	97.4	95.6	97.7
Hogs	98.4	98.5	98.4	98.4	98.5
Sheep	95.3	94.4	94.4	95.5	95.4

U.S. Monthly Commercial Red Meat Production

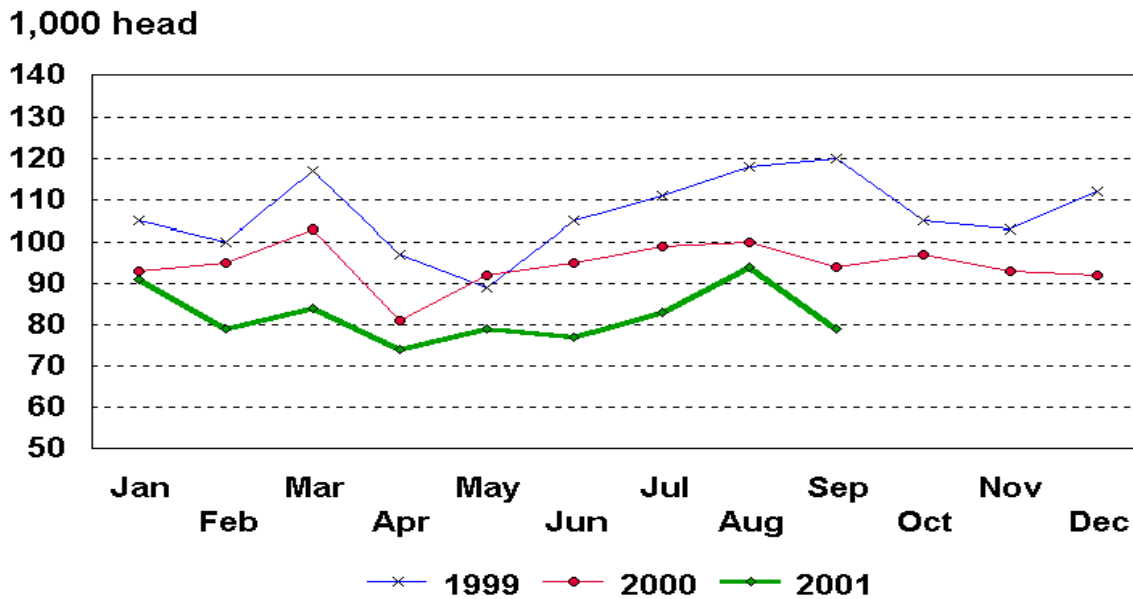
Million Pounds



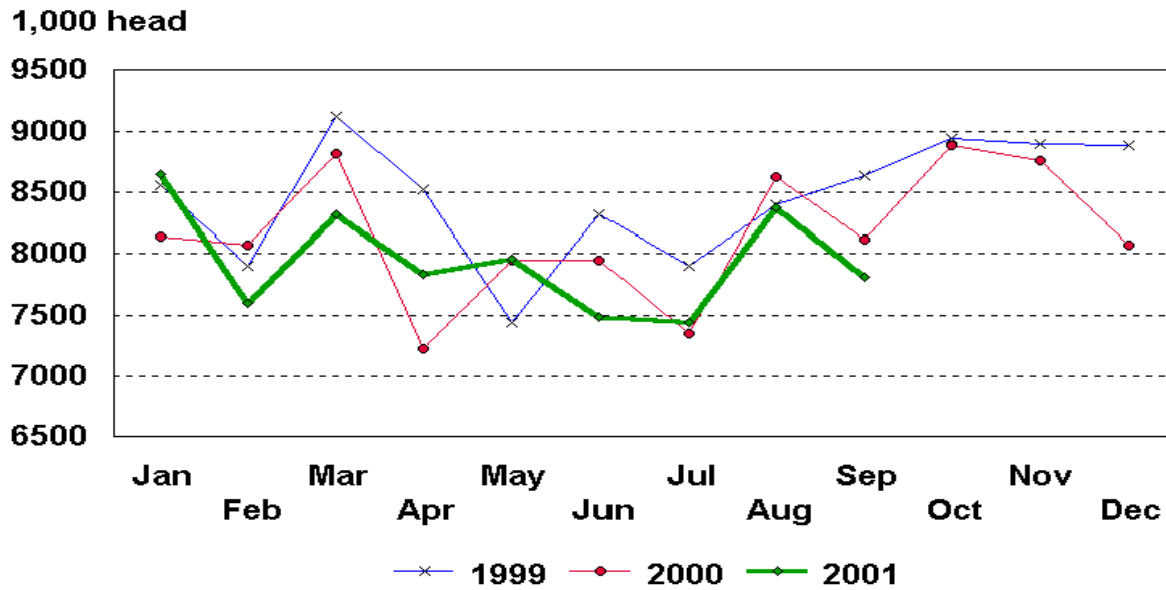
U.S. Monthly Commercial Slaughter Cattle



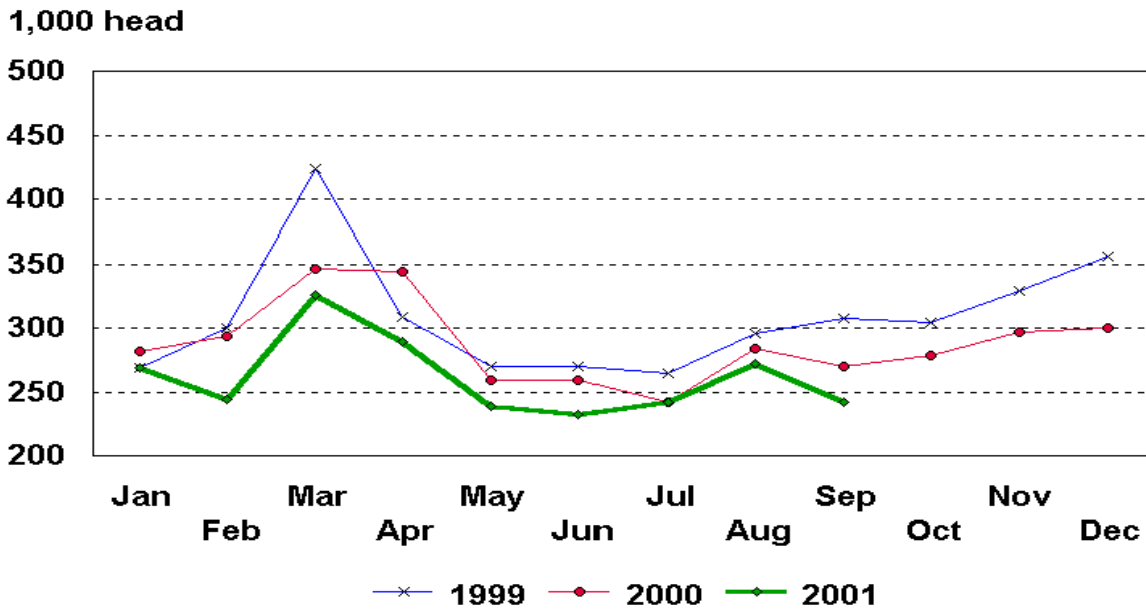
U.S. Monthly Commercial Slaughter Calves



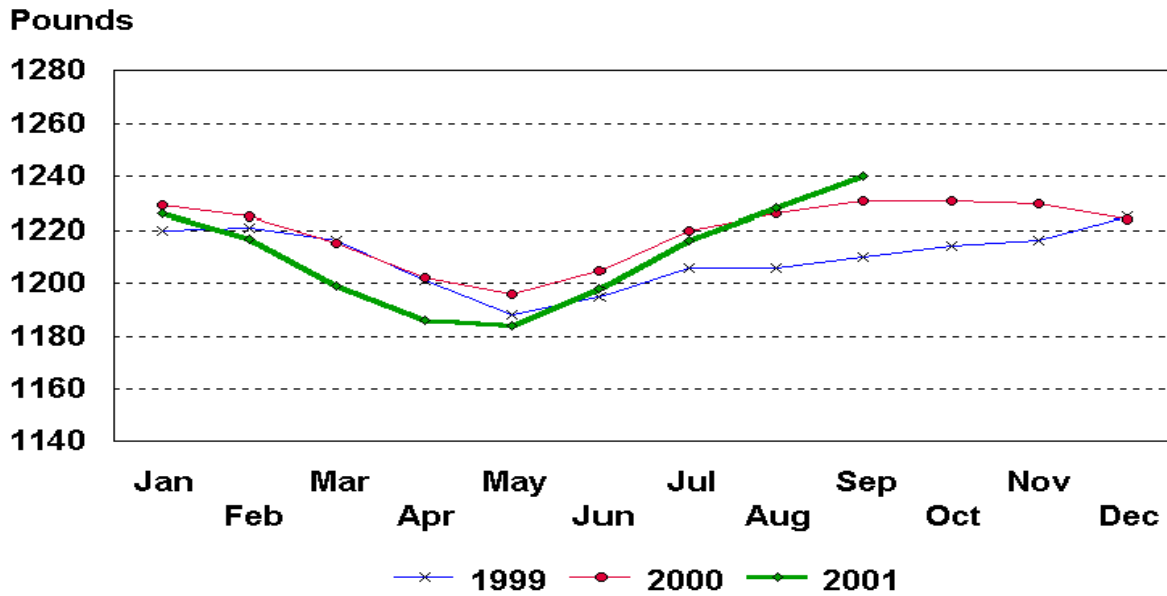
U.S. Monthly Commercial Slaughter Hogs



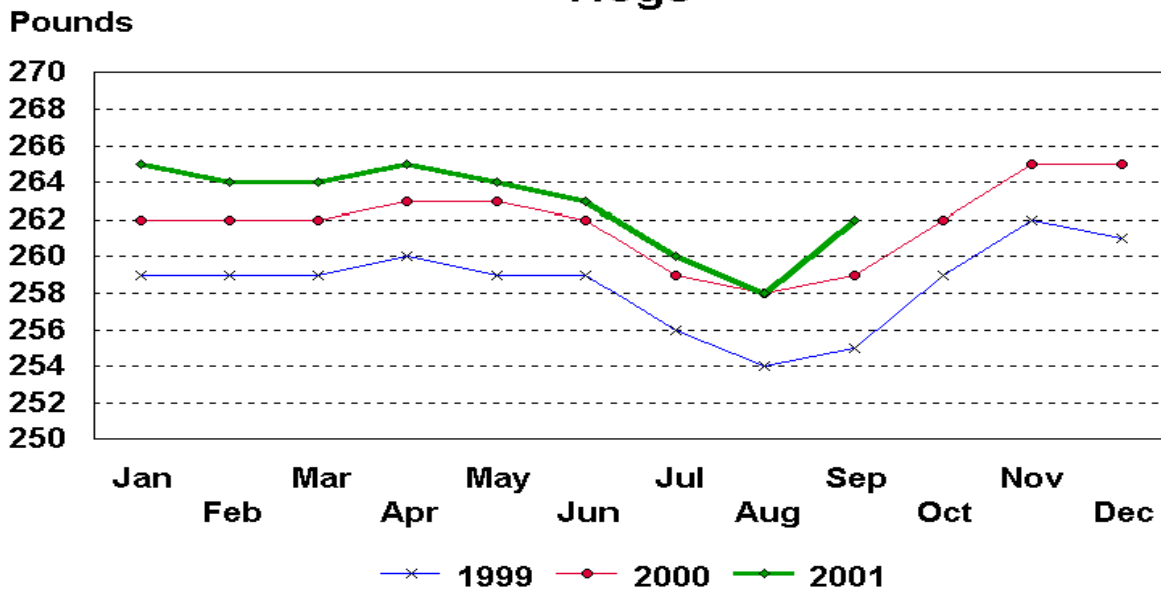
U.S. Monthly Commercial Slaughter Sheep



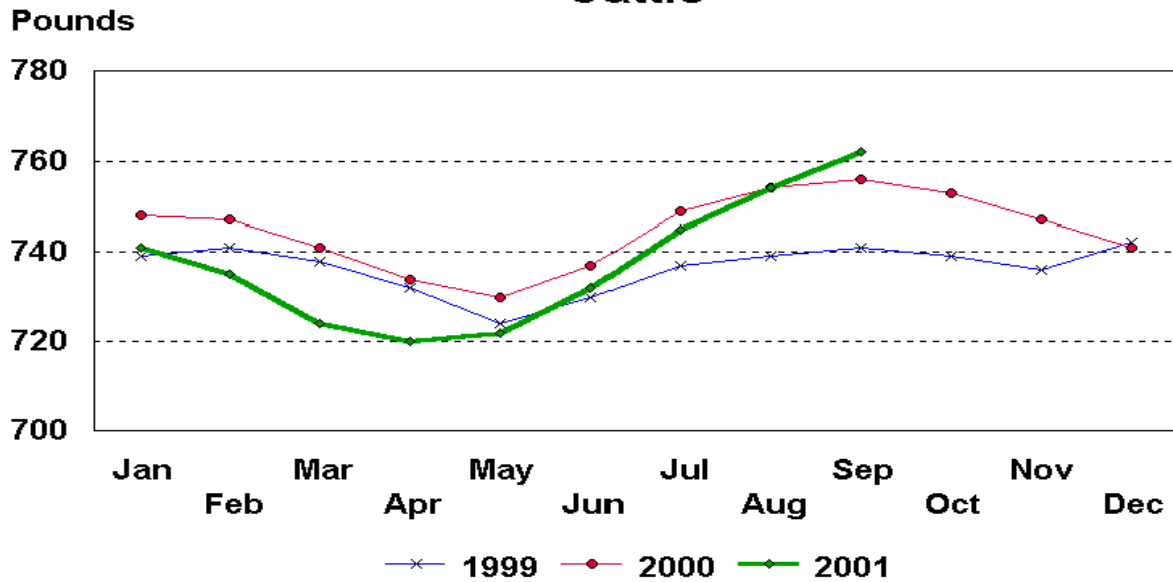
U.S. Monthly Commercial Slaughter Average Live Weight Cattle



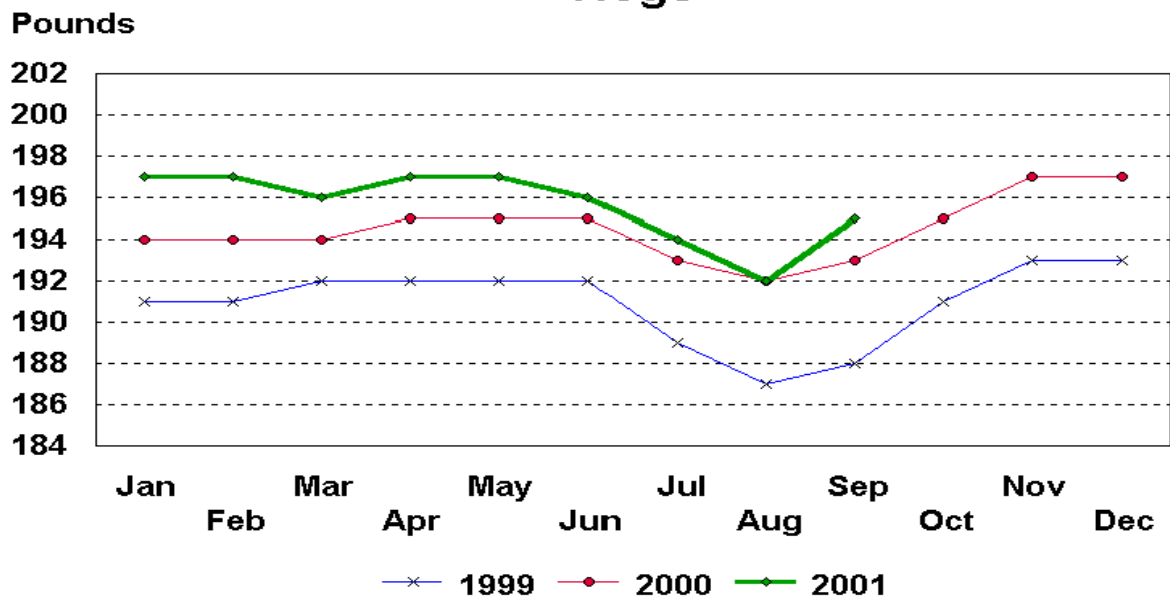
U.S. Monthly Commercial Slaughter Average Live Weight Hogs



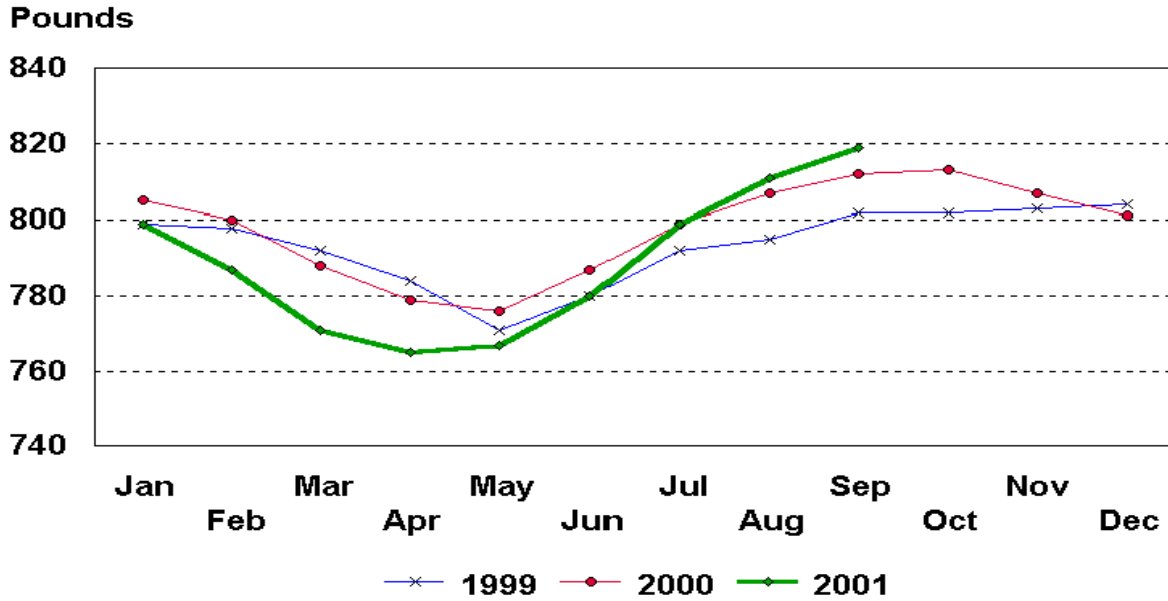
U.S. Monthly Federally Inspected Average Dressed Weight Cattle



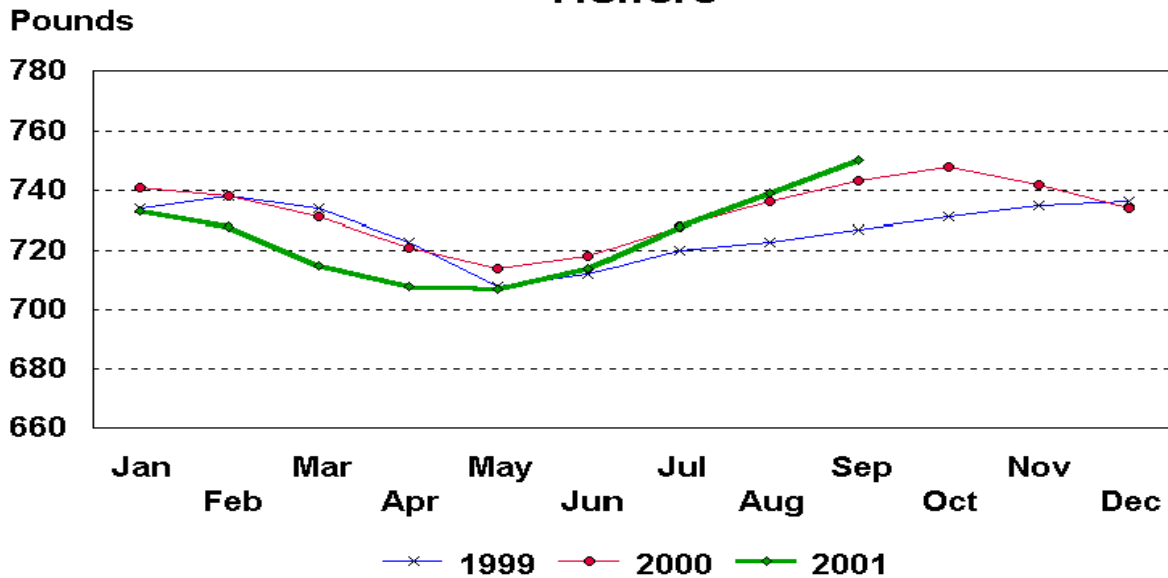
U.S. Monthly Federally Inspected Average Dressed Weight Hogs



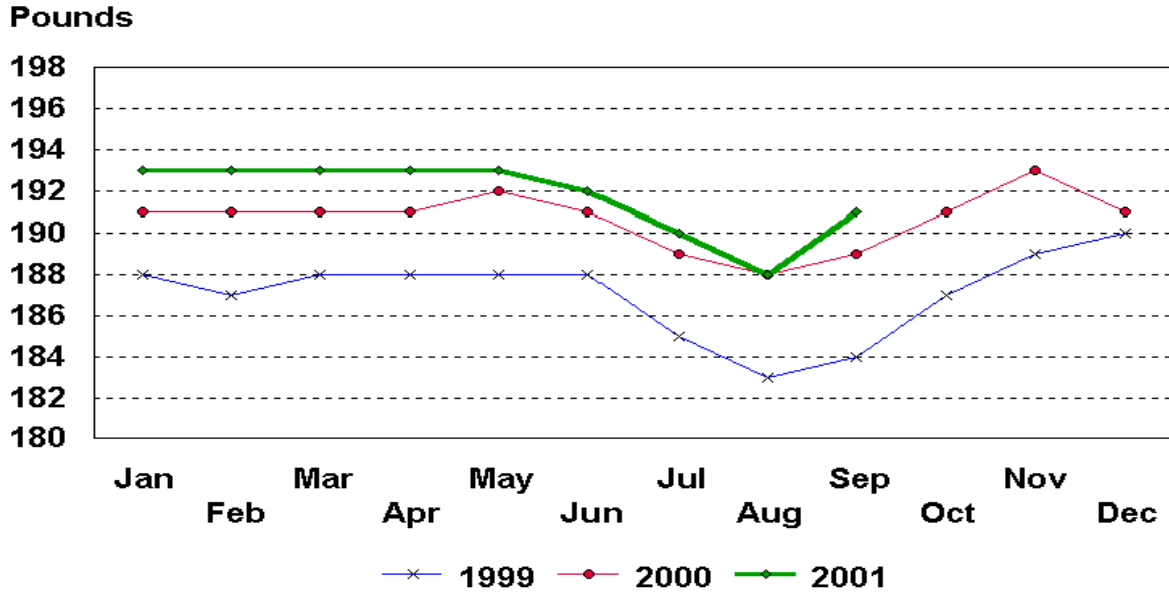
U.S. Monthly Federally Inspected Average Dressed Weight Steers



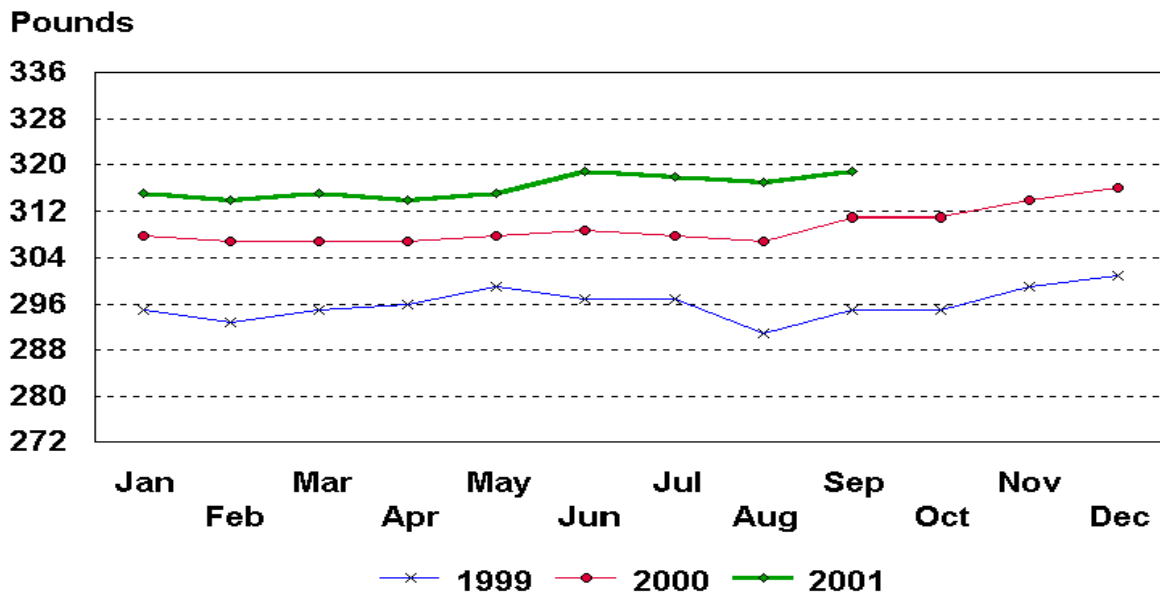
U.S. Monthly Federally Inspected Average Dressed Weight Heifers



U.S. Monthly Federally Inspected Average Dressed Weight Barrows and Gilts



U.S. Monthly Federally Inspected Average Dressed Weight Sows



Livestock Slaughter Estimates

Data Sources: Primary data for the commercial livestock slaughter estimates are obtained from the **Weekly Livestock Slaughter Report** (LS-149), completed by inspectors from the Food Safety and Inspection Service (FSIS), USDA, which provide actual counts of animals slaughtered in Federally Inspected (FI) plants. These counts are combined with data from State-administered Non-Federally Inspected (NFI) slaughter plants to derive total commercial slaughter estimates. Over 95 percent of the total U.S. slaughter for any species is under FI. The LS-149 forms collect number of head slaughtered daily under FI by species and class as well as head kill after condemnation and total live and dressed weights.

Slightly over 900 plants in the U.S. are operated under Federal Inspection and 2,400 plants under State inspection. Slaughter from State-inspected Talmedge-Aiken plants is included in FI totals (see Types of Plants, page 22). To prevent duplication in reporting between NFI and FI plants and assure all FI plants are included, certificates prepared by FSIS identifying operating status are constantly monitored.

Revision Policy: Revisions are generally the result of late or corrected data and are less than one-half of 1 percent. Revisions for the previous month and the year-to-date totals are noted in each monthly release by an (*) or a footnote. Final data are published in the annual summary.

Procedures and Reliability: Individual inspectors may be contacted by telephone if the **Weekly Livestock Slaughter Report** (LS-149) is not received by NASS in time for summarization. This assures that all plants slaughtering a large number of head or several species are accounted for each week.

All head kill data are tabulated on a weekly basis approximately two weeks after the kill week. A computer edit compares each plant's data with the historical data for that plant. The edit provides a missing reports listing for follow-up telephone contact and imputes missing weight data. In addition, data are checked for unusual values for species, class, head kill, and pattern of kill generally, based on each plant's past operating profile.

Usually, if a form is not received by mail, data for plants slaughtering fewer than 50 total head weekly of only one species are imputed. Imputation of live and dressed weight data may also be necessary on partially completed forms for any plant. The imputation is based on the data history of each respective plant and represents the recent operating characteristics until final data are tabulated. Imputed head kill for missing plants usually is less than 1 percent of the U.S. head kill totals. Imputation for live and dressed weight data for cattle is about 15 percent and for hogs about 10 percent. The imputation for calves and sheep is more frequent and variable.

Head kill for FI slaughter before condemnation is for the actual days of the survey month, while head kill after condemnation and live and dressed weight data are for full weeks only. Average live and dressed weight and dressing percentages by State are compared with the previous week as an additional check. Fluctuations are frequently the result of plants permanently or temporarily closing and a shift in the kind of animal reported.

FI data are summarized weekly and accumulated to a monthly total for this release, while NFI data are summarized monthly only. These weekly totals are published by USDA's Agricultural Marketing Service (AMS) in **Livestock, Meat, Wool Market News**, Weekly Summary and Statistics.

Livestock slaughter estimates are based on a census of operating plants, and, therefore, have no sampling error. However, they may be subject to errors such as omissions, duplications and mistakes in reporting, recording and processing the data. These errors are minimized through rigid quality controls in the edit and summarization process, and a careful review of all reported data for consistency and reasonableness.

Generally, no data are published if less than three plants operate for a species in a State or if one plant has 60 percent or more of the total commercial slaughter for a species. These data are included in U.S. totals. A review of the reported data is made annually.

Types of Plants

There are generally **four types** of slaughtering plants.

- (1) **Federally Inspected (FI) Plants:** Plants that transport meat interstate must employ federal inspectors to assure compliance with USDA standards. Any State whose commercial plants operate entirely under federal inspection may still have custom-exempt establishments for which NFI estimates are made.
- (2) **Talmedge-Aiken (TA) Plants:** Slaughter plants in which USDA is responsible for inspection. However, federal inspection is carried out by State employees. These plants are considered to be federally inspected.
- (3) **Non-Federally Inspected (NFI) Plants:** Plants which sell and transport only intrastate. State inspectors assure compliance with individual State standards for these NFI plants. Mobile slaughtering units are excluded and are considered farm slaughter.
- (4) **Custom-Exempt Plants:** Plants that do not sell meat but operate on a custom basis only are custom-exempt. The animals and meat are not inspected, but the facilities must meet health standards. These are considered NFI plants and head kill is included in NFI totals.

Terms and Definitions

Commercial Production: Includes slaughter and meat production in federally inspected and other plants, but excludes animals slaughtered on farms.

Dressed Weight: The weight of a chilled animal carcass. Beef with kidney knob in; veal with hide off; lamb and mutton with pluck out; pork with leaf fat and kidneys out, jowls on and head off.

Dressing Percent: Is usually expressed as a percentage yield of chilled carcass in relation to the weight of the live animal on hoof. For example, a live hog that weighed 200 pounds on hoof and yielded a carcass weighing 140 pounds would have a dressing percentage of 70.

Food and Meat Inspection: Includes examination, checking, or testing of a carcass and/or meat against established government standards and involves checking the facility for cleanliness, health of animals, or parts of animals and quality of the meat produced.

Live Weight: The gross weight of a live animal when received at the slaughter plant.

Plant, Slaughter: An establishment where animals are killed and butchered.

Red Meat: Red meat production is the carcass weight after slaughter including beef, veal, pork, and lamb and mutton. It is derived using the number of head times average dressed weight for FI and NFI separately. FI head kill must be adjusted for condemnations using the factor derived from the FSIS inspection reports.

The FI meat production formula is $(\text{FI head kill}) \times (1 - \text{condemnation factor}) \times (\text{average dressed weight}) = \text{FI red meat production}$. The condemnation factor is the number of animals condemned as a percentage of the total kill. It has been fairly stable for the last five years; running about 1.75 head per 100 head for calves, .5 per 100 for cattle, .35 per 100 for hogs and .25 per 100 for sheep. The NFI meat production formula is $(\text{NFI head kill}) \times (\text{live weight}) \times (\text{FI dressing percentage}) = \text{NFI red meat production}$.

Slaughter: Killing and butchering of animals primarily for food.

Slaughter, Farm: Animals slaughtered on farms primarily for home consumption. Excludes custom slaughter for farmers at commercial establishments, but includes mobile slaughtering on farms. These estimates appear only in the annual slaughter release.

Wholesome Meat Act: Legislation that specifies that all meat produced for sale in the U.S. must be inspected; and further, meat that is transported interstate must be inspected in compliance with federal (USDA) standards.

Index

	Page
Commercial Calf Slaughter, Number, Total, and Average Live weight, by State and U.S.	6
Commercial Cattle Slaughter, Number, Total, and Average Live weight, by State and U.S.	5
Commercial Hog Slaughter, Number, Total and Average Live weight, by State and U.S.	7
Commercial Red Meat Production, by State and U.S.	4
Commercial Sheep and Lamb Slaughter, Number, Total, and Average Live weight, by State and U.S.	8
Data Sources, Revision Policy, and Procedures and Reliability	21
Federally Inspected Classification of Number and Average Dressed Weight, by Species and Class and U.S.	9
Federally Inspected Number by Species and Class, by Regions and U.S.	10
Federally Inspected Number by Species and Class, by State and U.S.	12
Federally Inspected Percent of Total Commercial, by Species, U.S.	14
Livestock Slaughter, Number and Average Weights, by Species and Type of Slaughter, U.S.	3
Red Meat Production, Commercial and FI, by Class, U.S	2
Terms and Definitions	23
Types of Plants	22

The next "Livestock Slaughter" report will be released at 3 p.m. on November 21, 2001.

The United States Department of Agriculture (USDA) prohibits discrimination in all its programs on the basis of race, color, national origin, gender, religion, age, disability, political beliefs, sexual orientation, and marital or family status. (Not all prohibited bases apply to all programs.) Persons with disabilities who require alternative means for communication of program information (braille, large print, audiotape, etc.) should contact the USDA's TARGET Center at 202-720-2600 (voice and TDD).

To file a complaint of discrimination, write USDA, Director, Office of Civil Rights, Room 326-W, Whitten Building, 14th and Independence Avenue, SW, Washington, D.C., 20250-9410, or call 202-720-5964 (voice or TDD). USDA is an equal opportunity provider and employer.

ACCESS TO REPORTS!!

For your convenience, there are several ways to obtain NASS reports, data products, and services:

INTERNET ACCESS

All NASS reports are available free of charge on the worldwide Internet. For access, connect to the Internet and go to the NASS Home Page at: <http://www.usda.gov/nass/>. Select "Today's Reports" or Publications and then Reports by Calendar or Publications and then Search, by Title or Subject.

E-MAIL SUBSCRIPTION

All NASS reports are available by subscription free of charge direct to your e-mail address. Send an e-mail message to: usda-reports@usda.mannlib.cornell.edu. In the body of the message type the word: **list**.

AUTOFAX ACCESS

NASSFax service is available for some reports from your fax machine. Please call 202-720-2000, using the handset attached to your fax. Respond to the voice prompts. Document 0411 is a list of available reports.

PRINTED REPORTS OR DATA PRODUCTS

CALL OUR TOLL-FREE ORDER DESK: 800-999-6779 (U.S. and Canada)
Other areas, please call 703-834-0125 FAX: 703-834-0110
(Visa, MasterCard, check, or money order acceptable for payment.)

ASSISTANCE

For **assistance** with general agricultural statistics or further information about NASS or its products or services, contact the **Agricultural Statistics Hotline** at **800-727-9540**, 7:30 a.m. to 4:00 p.m. ET, or e-mail: nass@nass.usda.gov.