



# Livestock Slaughter

---

Released November 21, 2001, by the National Agricultural Statistics Service (NASS), Agricultural Statistics Board, U.S. Department of Agriculture. For information on "Livestock Slaughter" call Liana Cuffman at (515) 284-4340, office hours 8:00 a.m. to 4:30 p.m. CT.

## Monthly Record Highs for Red Meat Production and Beef and Pork Production

**Commercial red meat production** for the United States totaled 4.26 billion pounds in October, up 4 percent from the 4.10 billion pounds produced in October 2000 and 164 million pounds above the previous record high set in 2000.

October 2000 contained 22 weekdays (including one holiday) and 4 Saturdays.  
October 2001 contained 23 weekdays (including one holiday) and 4 Saturdays.

**Beef production**, at 2.39 billion pounds, was 2 percent above the previous year and 43 million pounds above the previous record high set in 2000. Cattle slaughter totaled 3.16 million head, up 1 percent from October 2000. The average live weight was up 16 pounds from the previous year, at 1,247 pounds.

**Veal production** totaled 18 million pounds, 2 percent below October a year ago. Calf slaughter totaled 93,700 head, down 3 percent from October 2000. The average live weight was 5 pounds above last year, at 317 pounds.

**Pork production** totaled 1.84 billion pounds, up 7 percent from the previous year and also 121 million pounds above the previous record high set in 2000. Hog kill totaled 9.33 million head, 5 percent above October 2000. The average live weight was 5 pounds above the previous year, at 267 pounds.

**Lamb and mutton production**, at 20 million pounds, was up 6 percent from October 2000. Sheep slaughter totaled 288,500 head, 3 percent above last year. The average live weight was 137 pounds, up 3 pounds from October a year ago.

**January - October red meat production** was 37.9 billion pounds, 2 percent below the previous year. Accumulated beef production was down 4 percent from last year, veal was down 10 percent, pork was up 1 percent from last year, and lamb and mutton was down 3 percent.

**Commercial Red Meat Production: United States <sup>1</sup>**

Class	Oct 2000	Sep 2001	Oct 2001	Oct 01 % of		Jan - Oct <sup>2</sup>		
				Oct 2000	Sep 2001	2000	2001	01 as % of 00
	<i>Million Pounds</i>	<i>Million Pounds</i>	<i>Million Pounds</i>	<i>Percent</i>	<i>Percent</i>	<i>Million Pounds</i>	<i>Million Pounds</i>	<i>Percent</i>
Beef	2,345	2,120	2,388	102	113	22,610	21,790	96
Veal	18	15	18	98	120	180	162	90
Pork	1,717	1,513	1,838	107	121	15,636	15,735	101
Lamb & Mutton	18	16	20	106	120	191	185	97
<b>Total Red Meat</b>	<b>4,099</b>	<b>3,664</b>	<b>4,263</b>	<b>104</b>	<b>116</b>	<b>38,616</b>	<b>37,872</b>	<b>98</b>

<sup>1</sup> Based on packers' dressed weights and excludes farm slaughter.

<sup>2</sup> Accumulated totals and percentages based on unrounded data.

**Federally Inspected Red Meat Production: United States <sup>1</sup>**

Class	Oct 2000	Sep 2001	Oct 2001	Oct 01 % of		Jan - Oct <sup>2</sup>		
				Oct 2000	Sep 2001	2000	2001	01 as % of 00
	<i>Million Pounds</i>	<i>Million Pounds</i>	<i>Million Pounds</i>	<i>Percent</i>	<i>Percent</i>	<i>Million Pounds</i>	<i>Million Pounds</i>	<i>Percent</i>
Beef	2,310	2,090	2,353	102	113	22,301	21,494	96
Veal	18	14	17	96	119	170	157	92
Pork	1,694	1,492	1,817	107	122	15,422	15,537	101
Lamb & Mutton	18	16	19	106	121	184	178	97
<b>Total Red Meat</b>	<b>4,039</b>	<b>3,612</b>	<b>4,206</b>	<b>104</b>	<b>116</b>	<b>38,077</b>	<b>37,366</b>	<b>98</b>

<sup>1</sup> Based on packers' dressed weights and excludes farm slaughter.

<sup>2</sup> Accumulated totals and percentages based on unrounded data.

**Livestock Slaughter: Number and Average Weights, United States <sup>1</sup>**

Species	Unit	Oct 2000	Sep 2001	Oct 2001	Oct 01 % of		Jan - Oct <sup>2</sup>		
					Oct 2000	Sep 2001	2000	2001	01 % of 00
					<i>Percent</i>	<i>Percent</i>			<i>Prcnt</i>
Cattle No.									
Fed. Insp.	Thou	3,082.0	2,757.6	3,102.5	101	113	30,087.9	29,191.5	97
Other	Thou	59.4	49.8	58.2	98	117	512.0	489.6	96
Comm'l. <sup>3</sup>	Thou	3,141.4	*2,807.4	3,160.8	101	113	30,599.9	29,681.1	97
Live Wt/Hd									
Fed. Insp.	Lbs	1,234	1,243	1,250	101	101	1,221	1,217	100
Other	Lbs	1,069	1,082	1,080	101	100	1,075	1,078	100
Comm'l.	Lbs	1,231	1,240	1,247	101	101	1,218	1,214	100
Calves No.									
Fed. Insp.	Thou	95.0	76.6	90.7	95	118	908.2	813.9	90
Other	Thou	2.0	2.0	3.0	145	146	39.3	20.2	51
Comm'l. <sup>3</sup>	Thou	97.1	78.6	93.7	97	119	947.5	834.1	88
Live Wt/Hd									
Fed. Insp.	Lbs	309	308	314	102	102	310	320	103
Other	Lbs	411	413	433	106	105	429	418	97
Comm'l.	Lbs	312	313	317	102	101	315	322	102
Hogs No.									
Fed. Insp.	Thou	8,745.7	*7,686.6	9,209.2	105	120	79,860.5	79,619.7	100
Other	Thou	136.3	124.0	120.8	89	97	1,282.4	1,188.1	93
Comm'l. <sup>3</sup>	Thou	8,882.1	7,810.5	9,330.0	105	119	81,142.8	80,807.8	100
Live Wt/Hd									
Fed. Insp.	Lbs	263	262	267	102	102	262	264	101
Other	Lbs	234	229	235	101	103	231	230	99
Comm'l.	Lbs	262	262	267	102	102	261	263	101
Sheep&Lambs No.									
Fed. Insp.	Thou	266.1	*229.8	274.0	103	119	2,734.7	2,525.6	92
Other	Thou	12.8	13.5	14.5	114	107	128.2	123.9	97
Comm'l. <sup>3</sup>	Thou	278.9	243.3	288.5	103	119	2,862.9	2,649.5	93
Live Wt/Hd									
Fed. Insp.	Lbs	135	137	139	103	102	136	142	104
Other	Lbs	107	107	104	98	98	103	106	103
Comm'l.	Lbs	134	135	137	103	102	134	140	104

\* Revised.

<sup>1</sup> Excludes slaughter on farms.

<sup>2</sup> Accumulated totals and percentages based on unrounded data.

<sup>3</sup> Totals may not equal sum of the parts due to rounding.

**Commercial Red Meat Production: By State and United States <sup>1</sup>**

State	Oct 2000	Sep 2001	Oct 2001	Oct 01 as % of <sup>2</sup>	
				Oct 2000	Sep 2001
	<i>Million Pounds</i>	<i>Million Pounds</i>	<i>Million Pounds</i>	<i>Percent</i>	<i>Percent</i>
AL	4.4	3.9	4.4	102	113
AK	0.1		0.1	93	
AZ	30.4	33.0	37.2	122	113
AR	5.5	5.0	6.4	117	128
CA	97.2	88.8	107.0	110	120
CO	185.3	179.7	191.6	103	107
DE-MD	3.5	2.3	3.4	97	148
FL	5.1	4.9	6.7	130	136
GA	29.4	24.1	26.7	91	111
HI	1.2	0.9	1.0	91	122
ID	53.3	56.0	59.3	111	106
IL	253.9	219.6	255.4	101	116
IN	118.4	99.2	127.9	108	129
IA	528.1	481.1	576.9	109	120
KS	552.8	445.7	527.5	95	118
KY	38.7	34.8	42.0	109	121
LA	1.7	1.4	1.8	106	128
MI	31.5	32.5	37.5	119	115
MN	181.9	170.4	207.7	114	122
MS	25.1	23.7	30.8	123	130
MO	70.7	33.0	42.6	60	129
MT	1.8	1.2	1.5	81	124
NE	640.2	614.1	676.7	106	110
NV	0.1	0.1	0.1	113	89
N ENG <sup>3</sup>	2.1	1.6	2.1	97	134
NJ	5.0	4.5	5.4	109	120
NM	1.0	0.9	1.0	99	106
NY	4.5	3.2	4.1	91	130
NC	173.0	157.1	191.0	110	122
ND	2.5	2.3	3.1	121	133
OH	27.6	25.1	27.0	98	107
OK	80.9	75.3	91.3	113	121
OR	4.0	3.4	4.0	100	116
PA	108.3	89.7	109.7	101	122
SC	20.3	17.2	22.1	109	128
SD	91.3	83.3	95.9	105	115
TN	19.9	18.3	23.6	119	129
TX	409.3	372.8	414.1	101	111
UT	44.2	42.6	48.9	111	115
VA	69.7	63.2	78.9	113	125
WA	57.8	48.3	51.3	89	106
WV	1.4	0.6	1.2	91	211
WI	116.1	99.2	116.1	100	117
WY	0.2	0.3	0.2	98	67
US	4,099.2	3,664.4	4,263.3	104	116

<sup>1</sup> Includes total beef, veal, pork, lamb, and mutton.

<sup>2</sup> Percentages based on unrounded data.

<sup>3</sup> N ENG includes CT, ME, MA, NH, RI, and VT.

**Commercial Cattle Slaughter: By State and United States,  
October 2000 and 2001 <sup>1</sup>**

State	Number Slaughtered		Total Live Weight		Average Live Weight	
	2000	2001	2000	2001	2000	2001
	<i>1,000 Head</i>	<i>1,000 Head</i>	<i>1,000 Pounds</i>	<i>1,000 Pounds</i>	<i>Pounds</i>	<i>Pounds</i>
AL	0.8	0.7	634	536	801	789
AK		0.1		138		1,141
AZ	41.6	49.4	51,226	62,197	1,233	1,259
AR	1.6	1.3	1,604	1,235	995	951
CA	93.5	99.3	116,224	126,942	1,244	1,279
CO	224.7	228.4	281,147	291,542	1,251	1,276
DE-MD	3.2	3.3	3,939	4,040	1,220	1,221
FL	6.8	9.2	7,382	9,995	1,092	1,081
GA	41.0	38.1	46,702	43,560	1,138	1,143
HI	1.3	1.1	1,262	1,101	958	1,028
ID	72.3	79.1	87,844	98,196	1,216	1,242
IL	95.4	89.9	117,037	111,208	1,227	1,237
IN	4.1	3.7	4,330	3,847	1,055	1,051
IA	61.2	61.7	76,687	78,271	1,254	1,269
KS	704.5	657.9	861,435	816,830	1,223	1,242
KY	1.5	1.6	1,278	1,411	846	885
LA	2.3	1.6	1,940	1,446	861	913
MI	34.4	39.3	48,112	55,141	1,397	1,403
MN	59.0	65.9	81,504	89,808	1,380	1,362
MS						
MO	8.2	9.6	10,072	12,002	1,234	1,250
MT	2.3	1.8	2,543	2,098	1,106	1,134
NE	669.9	698.4	848,651	893,664	1,267	1,280
NV	0.1	0.1	86	109	1,044	1,064
N ENG <sup>2</sup>	2.4	2.3	2,560	2,436	1,081	1,070
NJ	2.1	2.4	2,237	2,817	1,062	1,161
NM	1.6	1.9	1,537	1,620	946	869
NY	6.0	5.0	6,383	5,622	1,059	1,114
NC	13.6	18.5	14,222	19,571	1,048	1,057
ND	1.1	1.0	1,215	1,149	1,146	1,131
OH	11.6	12.7	13,606	13,496	1,174	1,065
OK	3.5	3.6	3,589	3,569	1,015	1,002
OR	1.4	1.5	1,806	1,812	1,278	1,185
PA	87.9	91.2	113,745	116,490	1,294	1,278
SC						
SD	24.8	29.7	34,408	41,053	1,390	1,385
TN	2.6	1.6	2,174	1,340	845	862
TX	554.7	553.2	642,075	652,147	1,158	1,179
UT	56.8	61.0	68,968	76,681	1,213	1,257
VA	1.4	3.0	1,374	3,237	952	1,063
WA	73.7	67.0	93,484	83,434	1,268	1,245
WV	2.2	2.0	2,012	1,683	904	844
WI	150.2	146.8	194,668	192,298	1,296	1,310
WY	0.3	0.3	315	322	1,225	1,237
US <sup>3</sup>	3,141.4	3,160.8	3,867,204	3,942,113	1,231	1,247

<sup>1</sup> Includes slaughter under Federal inspection and other Commercial slaughter, excludes farm slaughter.

<sup>2</sup> N ENG includes CT, ME, MA, NH, RI, and VT.

<sup>3</sup> States with no data printed are still included in the US total. Data not printed to avoid disclosing individual operations.

**Commercial Calf Slaughter: By State and United States,  
October 2000 and 2001 <sup>1</sup>**

State	Number Slaughtered		Total Live Weight		Average Live Weight	
	2000	2001	2000	2001	2000	2001
	<i>1,000 Head</i>	<i>1,000 Head</i>	<i>1,000 Pounds</i>	<i>1,000 Pounds</i>	<i>Pounds</i>	<i>Pounds</i>
AL						
AK						
AZ						
AR						
CA	10.1	10.1	1,578	1,816	156	179
CO						
DE-MD	0.1	0.1	21	25	345	338
FL						
GA						
HI						
ID						
IL	10.3	9.1	4,422	3,965	431	435
IN	9.2	6.4	2,947	2,289	319	359
IA						
KS						
KY						
LA	1.0	1.5	480	749	489	499
MI	3.4	3.9	1,188	1,718	346	442
MN						
MS						
MO	0.2	0.2	57	93	334	440
MT						
NE						
NV						
N ENG <sup>2</sup>	2.5	2.4	251	276	102	116
NJ	10.2	10.8	4,484	4,823	438	448
NM						
NY	12.2	13.7	993	1,150	81	84
NC	0.2	0.2	86	64	400	400
ND						
OH	0.1	0.1	26	17	254	233
OK		0.2		74		410
OR						
PA	17.5	16.1	6,463	5,746	368	358
SC						
SD						
TN						
TX	3.0	2.1	940	732	314	351
UT						
VA	0.1	0.1	18	28	274	313
WA						
WV						
WI	13.2	12.6	5,571	5,325	422	422
WY						
US <sup>3</sup>	97.1	93.7	30,252	29,722	312	317

<sup>1</sup> Includes slaughter under Federal inspection and other Commercial slaughter, excludes farm slaughter.

<sup>2</sup> N ENG includes CT, ME, MA, NH, RI, and VT.

<sup>3</sup> States with no data printed are still included in the US total. Data not printed to avoid disclosing individual operations.

**Commercial Hog Slaughter: By State and United States,  
October 2000 and 2001 <sup>1</sup>**

State	Number Slaughtered		Total Live Weight		Average Live Weight	
	2000	2001	2000	2001	2000	2001
	<i>1,000 Head</i>	<i>1,000 Head</i>	<i>1,000 Pounds</i>	<i>1,000 Pounds</i>	<i>Pounds</i>	<i>Pounds</i>
AL	12.0	12.3	6,159	6,511	513	528
AK						
AZ	0.7	0.4	165	90	239	246
AR						
CA	205.0	219.1	45,606	49,952	223	228
CO	1.6	1.5	406	332	258	222
DE-MD	4.8	4.2	1,191	1,029	250	244
FL	11.5	11.3	2,216	2,167	193	192
GA	17.8	15.0	5,726	3,796	322	253
HI	3.0	2.8	618	595	208	212
ID						
IL	905.8	920.7	240,032	247,017	265	268
IN	590.2	636.8	152,013	165,697	258	260
IA	2,453.8	2,663.8	648,957	710,659	264	267
KS	35.2	30.4	11,057	10,042	314	330
KY	192.5	210.0	50,685	55,052	263	262
LA	2.7	2.6	582	561	218	213
MI	9.1	9.8	3,272	4,191	360	429
MN	722.7	821.5	188,189	216,847	260	264
MS						
MO	344.5	182.5	87,591		254	
MT	1.3	1.0	339	263	261	251
NE	587.6	642.9	153,378	170,973	261	266
NV						
N ENG <sup>2</sup>	3.0	2.8	765	711	253	253
NJ	8.9	9.5	851	938	95	99
NM	0.6	0.4	134	79	214	214
NY	3.6	3.4	898	744	246	216
NC	886.8	932.3	221,651	240,708	250	258
ND	11.7	15.2	2,738	3,523	233	232
OH	109.2	106.4	28,460	27,671	261	260
OK	392.3	422.4	105,795	119,596	270	283
OR	17.9	19.1	4,594	4,632	257	243
PA	221.6	220.0	56,642	56,087	256	255
SC						
SD	390.2	391.3	99,894	101,198	256	259
TN	59.8	71.0	27,945	34,050	467	480
TX	37.3	34.4	11,697	10,723	314	312
UT	5.2	6.0	1,274	1,103	245	185
VA	363.7	397.4	92,019	102,702	253	258
WA	1.7	1.8	464	491	268	269
WV	0.9	1.1	263	303	282	268
WI	35.1	36.8	15,030	16,186	428	440
WY	0.3	0.2	74	54	280	257
US <sup>3</sup>	8,882.1	9,330.0	2,331,502	2,487,615	262	267

<sup>1</sup> Includes slaughter under Federal inspection and other Commercial slaughter, excludes farm slaughter.

<sup>2</sup> N ENG includes CT, ME, MA, NH, RI, and VT.

<sup>3</sup> States with no data printed are still included in the US total. Data not printed to avoid disclosing individual operations.

**Commercial Sheep and Lamb Slaughter: By State and United States,  
October 2000 and 2001<sup>1</sup>**

State	Number Slaughtered		Total Live Weight		Average Live Weight	
	2000	2001	2000	2001	2000	2001
	<i>1,000 Head</i>	<i>1,000 Head</i>	<i>1,000 Pounds</i>	<i>1,000 Pounds</i>	<i>Pounds</i>	<i>Pounds</i>
AL						
AK						
AZ	0.1	0.1	11	13	123	130
AR						
CA						
CO	91.8	86.3	13,388	12,899	146	149
DE-MD	2.2	2.5	250	282	112	114
FL						
GA	0.4	0.4	34	35	81	95
HI						
ID	0.4	0.5	50	56	121	119
IL						
IN	3.1	2.8	307	282	98	99
IA	43.7	48.9	6,132	7,170	140	147
KS	0.2	0.3	19	33	106	132
KY	0.9	0.8	148	117	171	144
LA	0.2	0.2	15	13	78	79
MI	19.1	19.4	2,398	2,349	126	121
MN	0.4	0.3	46	35	118	118
MS						
MO	0.5	0.7	44	82	88	114
MT	0.4	0.4	48	46	125	127
NE	0.1	0.1	8	7	114	107
NV	0.2	0.1	26	16	119	138
N ENG <sup>2</sup>	2.5	2.7	259	287	103	106
NJ	8.6	9.1	852	861	99	95
NM	2.5	2.6	283	293	112	112
NY	1.7	1.7	169	152	100	92
NC						
ND						
OH	0.8	1.4	84	160	102	113
OK	0.1	0.1	13	10	141	112
OR	0.9	1.1	123	198	135	176
PA	5.0	4.6	410	479	82	105
SC						
SD	1.2	1.1	116	123	100	109
TN	0.5	0.5	36	37	78	75
TX	36.9	43.5	4,924	6,079	134	140
UT	2.6	3.1	355	423	135	136
VA	1.4	1.6	155	159	110	100
WA						
WV						
WI	1.2	1.4	152	197	126	137
WY		0.1		8		140
US <sup>3</sup>	278.9	288.5	37,349	39,630	134	137

<sup>1</sup> Includes slaughter under Federal inspection and other Commercial slaughter, excludes farm slaughter.

<sup>2</sup> N ENG includes CT, ME, MA, NH, RI, and VT.

<sup>3</sup> States with no data printed are still included in the US total. Data not printed to avoid disclosing individual operations.



**Classification of Livestock Slaughtered Under Federal Inspection:  
United States**

Item	Oct 2000	Sep 2001	Oct 2001	Jan - Oct <sup>1</sup>		Oct 2000	Sep 2001	Oct 2001	Jan - Oct <sup>1</sup>	
				2000	2001				2000	2001
	<i>1,000 Head</i>	<i>1,000 Head</i>	<i>1,000 Head</i>	<i>1,000 Head</i>	<i>1,000 Head</i>	<i>Percent of Total</i>	<i>Percent of Total</i>	<i>Percent of Total</i>	<i>Percent of Total</i>	<i>Percent of Total</i>
Class <sup>2</sup>										
Cattle										
Steers	1,452	1,355	1,494	15,110	14,395	47.1	49.1	48.2	50.2	49.3
Heifers	1,079	931	1,017	10,001	9,577	35.0	33.8	32.8	33.2	32.8
All Cows	498	422	534	4,456	4,694	16.2	15.3	17.2	14.8	16.1
Dairy Cows	233	190	229	2,164	2,147	7.6	6.9	7.4	7.2	7.4
Other Cows	265	232	305	2,292	2,547	8.6	8.4	9.8	7.6	8.7
Bulls & Stags	53	50	58	521	526	1.7	1.8	1.9	1.7	1.8
Total <sup>1</sup>	3,082	2,758	3,103	30,088	29,192	100.0	100.0	100.0	100.0	100.0
Hogs										
Barrows & Gilts	8,449	7,425	8,903	77,095	76,830	96.6	96.6	96.7	96.5	96.5
Sows	271	238	275	2,501	2,517	3.1	3.1	3.0	3.1	3.2
Stags & Boars	27	24	31	264	272	0.3	0.3	0.3	0.3	0.3
Total <sup>1</sup>	8,746	*7,687	9,209	79,860	79,620	100.0	100.0	100.0	100.0	100.0
Sheep										
Mature Sheep	14	10	13	141	119	5.2	4.5	4.7	5.2	4.7
Lambs & Yrlngs	252	219	261	2,594	2,407	94.8	95.5	95.3	94.8	95.3
Total <sup>1</sup>	266	230	274	2,735	2,526	100.0	100.0	100.0	100.0	100.0
Average Dressed Weight <sup>3</sup>										
	<i>Pounds</i>	<i>Pounds</i>	<i>Pounds</i>	<i>Pounds</i>	<i>Pounds</i>					
Cattle										
Steers <sup>4</sup>	753	762	762	745	740					
Heifers <sup>4</sup>	813	819	826	797	793					
All Cows <sup>4</sup>	748	750	757	732	728					
Bulls & Stags <sup>4</sup>	574	582	576	579	584					
Bulls & Stags <sup>4</sup>	866	905	891	896	892					
Calves & Vealers	190	190	192	191	197					
Hogs										
Barrow Gilts <sup>5</sup>	195	195	198	194	196					
Sows <sup>5</sup>	191	191	194	190	192					
Sows <sup>5</sup>	311	319	318	308	316					
Stags & Boars <sup>5</sup>	227	236	226	227	225					
Sheep										
Mature Sheep <sup>6</sup>	67	68	69	68	71					
Mature Sheep <sup>6</sup>	65	62	65	63	62					
Lamb & Yrlngs <sup>6</sup>	67	68	69	68	71					

\* Revised.

<sup>1</sup> Total and percentages based on unrounded data.

<sup>2</sup> Species totals and classification reported by meat inspectors, Inspection Operations, FSIS.

<sup>3</sup> Based on packer reports.

<sup>4</sup> Included in cattle average dressed weight.

<sup>5</sup> Included in hog average dressed weight.

<sup>6</sup> Included in sheep average dressed weight.

**Federally Inspected Slaughter: By Region and United States,  
October 2001 <sup>1</sup>**

Standard Federal Regions	Cattle							Calves
	Total <sup>2</sup>	Steers	Heifers	Cows			Bulls & Stags	Total
				All	Dairy	Other		
	<i>1,000 Head</i>	<i>1,000 Head</i>	<i>1,000 Head</i>	<i>1,000 Head</i>	<i>1,000 Head</i>	<i>1,000 Head</i>	<i>1,000 Head</i>	<i>1,000 Head</i>
1	1.8	0.5	0.2	0.8	0.8	0.1	0.2	2.4
2	7.2	1.8	0.6	4.2	3.3	0.8	0.7	24.5
3	94.7	44.5	9.4	37.5	27.2	10.3	3.2	16.2
4	79.7	1.1	0.4	66.5	23.1	43.4	11.7	2.9
5	335.9	143.8	47.7	134.6	88.6	46.1	9.7	31.9
6	553.0	271.8	189.9	80.1	11.4	68.7	11.3	1.8
7	1,418.4	767.2	566.7	76.7	2.3	74.4	7.8	0.1
8	316.2	127.0	160.2	23.5	4.2	19.3	5.5	
9	149.2	66.4	6.3	73.3	56.9	16.4	3.2	9.9
10	146.3	70.0	35.2	36.0	10.8	25.2	5.1	1.1
US <sup>2</sup>	3,102.5	1,494.1	1,016.7	533.4	228.6	304.8	58.4	90.7
	Hogs				Sheep			
	Total <sup>2</sup>	Barrows & Gilts	Sows	Stags & Boars	Total <sup>2</sup>	Mature Sheep	Lambs & Yearlings	
	<i>1,000 Head</i>	<i>1,000 Head</i>	<i>1,000 Head</i>	<i>1,000 Head</i>	<i>1,000 Head</i>	<i>1,000 Head</i>	<i>1,000 Head</i>	
1	2.0	2.0			2.4	0.8	1.6	
2	12.6	12.4	0.2		10.6	1.3	9.3	
3	620.6	618.8	1.8		7.9	0.7	7.2	
4	1,454.0	1,359.7	92.6	1.7	1.9	1.0	0.9	
5	2,486.5	2,392.3	92.4	1.7	38.4	3.7	34.7	
6	460.2	433.4	26.4	0.4	41.8	2.2	39.6	
7	3,510.2	3,433.7	49.2	27.3	49.5	0.1	49.4	
8	410.3	398.0	12.3		90.0	2.1	87.9	
9	215.9	215.8	0.1		29.6	0.7	28.9	
10	36.9	36.6	0.2		1.9	0.4	1.5	
US <sup>2</sup>	9,209.2	8,902.7	275.2	31.3	274.0	12.9	261.0	

<sup>1</sup> States included in regions are as follows: 1- CT, ME, NH, VT, MA, & RI; 2- NY & NJ; 3- DE-MD, PA, WV, & VA; 4- AL, FL, GA, KY, MS, NC, SC, & TN; 5- IL, IN, MI, MN, OH, & WI; 6- AR, LA, NM, OK, & TX; 7- IA, KS, MO, & NE; 8- CO, MT, ND, SD, UT, & WY; 9- AZ, CA, HI & NV; 10- AK, ID, OR, & WA.

<sup>2</sup> Totals may not add due to rounding.

**Federally Inspected Slaughter: By Region and United States,  
January - October 2001 \* <sup>1</sup>**

Standard Federal Regions	Cattle							Calves
	Total <sup>2</sup>	Steers	Heifers	Cows			Bulls & Stags	Total
				All	Dairy	Other		
	<i>1,000 Head</i>	<i>1,000 Head</i>	<i>1,000 Head</i>	<i>1,000 Head</i>	<i>1,000 Head</i>	<i>1,000 Head</i>	<i>1,000 Head</i>	<i>1,000 Head</i>
1	15.4	2.3	1.5	9.8	9.3	0.5	1.8	21.4
2	59.0	12.7	3.9	35.9	30.1	5.8	6.6	212.8
3	829.1	402.3	77.8	325.0	240.2	84.9	24.0	143.3
4	745.3	10.0	3.0	628.4	214.0	414.4	103.9	17.3
5	3,058.5	1,291.1	426.6	1,250.9	851.9	399.0	90.0	313.1
6	5,471.0	2,883.3	1,865.2	620.9	112.0	508.9	101.6	14.8
7	13,172.8	7,002.5	5,356.4	742.7	66.0	676.7	71.1	0.6
8	3,024.5	1,389.4	1,370.5	213.5	38.0	175.5	51.1	0.1
9	1,357.8	640.6	101.3	583.6	474.1	109.5	32.3	83.5
10	1,458.1	761.0	370.5	282.4	111.0	171.4	44.2	7.0
US <sup>2</sup>	29,191.5	14,395.3	9,576.7	4,693.1	2,146.5	2,546.6	526.4	813.9
	Hogs				Sheep			
	Total <sup>2</sup>	Barrows & Gilts	Sows	Stags & Boars	Total <sup>2</sup>	Mature Sheep	Lambs & Yearlings	
	<i>1,000 Head</i>	<i>1,000 Head</i>	<i>1,000 Head</i>	<i>1,000 Head</i>	<i>1,000 Head</i>	<i>1,000 Head</i>	<i>1,000 Head</i>	
1	17.1	16.6	0.4	0.1	18.6	4.2	14.4	
2	114.9	111.3	3.0	0.5	111.8	15.0	96.8	
3	5,287.0	5,269.2	17.6	0.2	74.3	5.5	68.8	
4	12,438.9	11,651.8	771.4	15.7	15.6	8.9	6.8	
5	21,257.3	20,267.2	964.0	26.2	343.8	37.8	306.0	
6	4,041.1	3,815.1	220.1	5.8	363.2	21.7	341.5	
7	30,704.4	30,065.0	416.3	223.0	376.8	0.5	376.2	
8	3,555.5	3,434.2	121.2	0.1	914.3	17.9	896.4	
9	1,883.4	1,882.0	0.8	0.5	295.0	5.7	289.2	
10	320.2	317.9	2.1	0.2	12.3	1.8	10.6	
US <sup>2</sup>	79,619.7	76,830.3	2,517.0	272.4	2,525.6	119.0	2,406.7	

\* Accumulated totals based on unrounded data.

<sup>1</sup> States included in regions are as follows: 1- CT, ME, NH, VT, MA, & RI; 2- NY & NJ; 3- DE-MD, PA, WV, & VA; 4- AL, FL, GA, KY, MS, NC, SC, & TN; 5- IL, IN, MI, MN, OH, & WI; 6- AR, LA, NM, OK, & TX; 7- IA, KS, MO, & NE; 8- CO, MT, ND, SD, UT, & WY; 9- AZ, CA, HI & NV; 10- AK, ID, OR, & WA.

<sup>2</sup> Totals may not add due to rounding.

**Federally Inspected Slaughter: By State and United States,  
October 2001**

State	Cattle						Calves	
	Total <sup>1</sup>	Steers	Heifers	Cows			Bulls & Stags	Total
				All	Dairy	Other		
	<i>1,000 Head</i>	<i>1,000 Head</i>	<i>1,000 Head</i>	<i>1,000 Head</i>	<i>1,000 Head</i>	<i>1,000 Head</i>	<i>1,000 Head</i>	<i>1,000 Head</i>
AL								
AK	0.1							
AZ	49.2	40.0	0.8	8.4	8.4			
AR	0.9	0.3	0.1	0.4		0.4	0.1	
CA	98.8	26.1	5.3	64.3	48.4	15.9	3.1	9.9
CO	227.6	99.7	127.3	0.6	0.5	0.1	0.1	
DE-MD	3.3	2.1	0.9	0.3	0.3			0.1
FL	9.2	0.2	0.1	8.5	1.7	6.8	0.5	
GA	37.2	0.1		30.8	1.7	29.1	6.3	
HI	1.1	0.2	0.2	0.6	0.1	0.5	0.1	
ID	77.9	34.9	12.7	26.5	6.2	20.3	3.9	
IL	86.3	49.1	37.1					9.1
IN	0.5	0.3	0.1					6.4
IA	61.1	34.7	26.2				0.2	
KS	654.6	374.9	279.7					
KY	0.7	0.5	0.2	0.1		0.1		
LA								
MI	37.4	28.5	1.7	7.1	7.1		0.1	3.8
MN	62.7	9.7	3.5	43.6	17.1	26.5	5.8	
MS								
MO	6.5	1.3	0.6	4.0	0.5	3.5	0.5	0.1
MT	0.6	0.3	0.2	0.1		0.1	0.1	
NE	696.2	356.3	260.2	72.6	1.8	70.8	7.1	
NV	0.1	0.1						
N ENG <sup>2</sup>	1.8	0.5	0.2	0.9	0.8	0.1	0.2	2.4
NJ	2.4	0.9	0.3	0.9	0.7	0.2	0.3	10.8
NM								
NY	4.8	0.9	0.3	3.2	2.6	0.6	0.3	13.7
NC	17.6	0.1		14.2	7.0	7.2	3.3	0.1
ND	0.4	0.2	0.1					
OH	6.5	0.4	0.1	5.8	4.8	1.0	0.2	
OK	0.9	0.1		0.8	0.4	0.4		
OR	1.3	0.7	0.1	0.3	0.3		0.2	
PA	90.9	42.3	8.5	37.1	26.8	10.3	3.1	16.0
SC								
SD	27.6	1.8	2.6	18.4	2.3	16.1	4.9	
TN	0.9	0.3	0.1	0.4	0.2	0.2	0.1	
TX	549.9	271.4	189.8	77.6	9.7	67.9	11.1	1.8
UT	59.9	25.0	30.1	4.5	1.4	3.1	0.4	
VA	0.4	0.1	0.1	0.2	0.1	0.1	0.1	0.1
WA	67.0	34.4	22.4	9.1	4.2	4.9	1.0	
WV	0.1	0.1						
WI	142.5	55.8	5.1	78.1	59.5	18.6	3.5	12.6
WY								
US <sup>3</sup>	3,102.5	1,494.1	1,016.7	533.4	228.6	304.8	58.4	90.7

<sup>1</sup> Totals may not add due to rounding.

<sup>2</sup> N ENG includes CT, ME, MA, NH, RI, VT

<sup>3</sup> States with no data printed are still included in the US total. Data not printed to avoid disclosing individual operations.

**Federally Inspected Slaughter: By State and United States,  
October 2001**

State	Hogs				Sheep		
	Total <sup>1</sup>	Barrows & Gilts	Sows	Stags & Boars	Total <sup>1</sup>	Mature Sheep	Lambs & Yearlings
	<i>1,000 Head</i>	<i>1,000 Head</i>	<i>1,000 Head</i>	<i>1,000 Head</i>	<i>1,000 Head</i>	<i>1,000 Head</i>	<i>1,000 Head</i>
AL	11.3		9.6	1.7			
AK							
AZ							
AR							
CA	212.9	212.9					
CO	0.8	0.8	0.1		86.2		86.2
DE-MD	4.2	4.2			2.5	0.1	2.4
FL	11.3	11.0	0.2				
GA	6.7	6.7					
HI	2.8	2.8					
ID					0.3	0.1	0.3
IL	898.4	849.5	47.5	1.5			
IN	632.9	632.9			2.4	1.6	0.8
IA	2,662.8	2,594.9	40.6	27.3	48.7		48.7
KS	26.8	18.4	8.4				
KY	209.4	203.5	5.9		0.8	0.7	
LA							
MI	8.3	3.5	4.8		19.1	2.1	17.0
MN	818.7	818.6			0.2		0.2
MS							
MO	179.1	179.0	0.1		0.7		0.7
MT	0.3	0.3			0.1		0.1
NE	641.5	641.5	0.1				
NV					0.1		0.1
N ENG <sup>2</sup>	2.0	2.0			2.4	0.8	1.6
NJ	9.4	9.2	0.2		9.0	0.8	8.2
NM							
NY	3.1	3.1			1.6	0.5	1.1
NC	917.6	911.7	5.9				
ND	14.8	14.8					
OH	97.3	87.7	9.6				
OK	420.0	413.6	6.4				
OR	18.9	18.7	0.1		1.0	0.1	0.8
PA	219.5	219.2	0.3		4.5	0.5	4.0
SC							
SD	389.9	377.7	12.2		0.8		0.8
TN	70.7	1.1	69.7		0.5		0.4
TX	24.5	18.0	6.2	0.4	40.7	1.3	39.4
UT	4.4	4.4			2.4	2.0	0.4
VA	396.8	395.3	1.5		0.9		0.8
WA	1.6	1.6			0.6	0.2	0.4
WV	0.1	0.1					
WI	30.9	0.2	30.6	0.2			
WY							
US <sup>3</sup>	9,209.2	8,902.7	275.2	31.3	274.0	12.9	261.0

<sup>1</sup> Totals may not add due to rounding.

<sup>2</sup> N ENG includes CT, ME, MA, NH, RI, VT

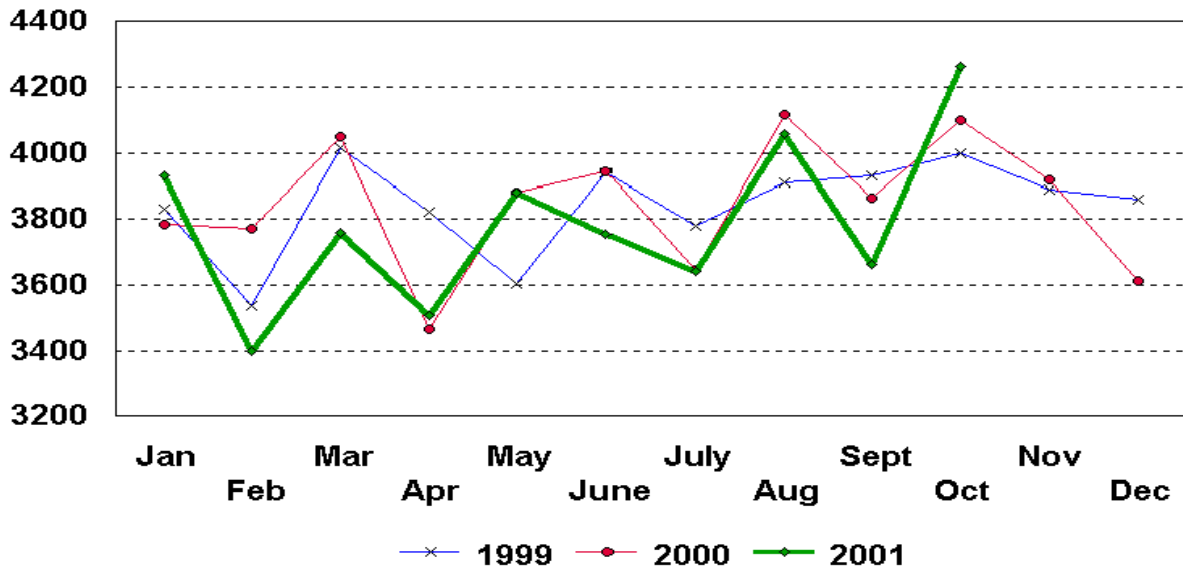
<sup>3</sup> States with no data printed are still included in the US total. Data not printed to avoid disclosing individual operations.

**Federally Inspected Slaughter: Percent of Total Commercial Slaughter by Species, United States**

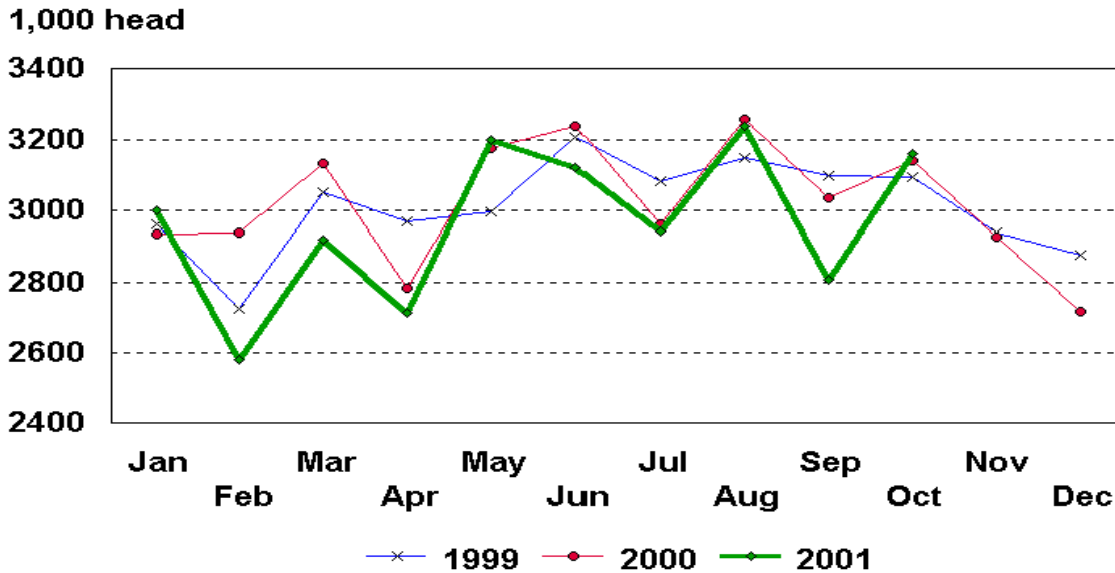
Species	Oct 2000	Sep 2001	Oct 2001	Jan - Oct	
				2000	2001
	<i>Percent</i>	<i>Percent</i>	<i>Percent</i>	<i>Percent</i>	<i>Percent</i>
Cattle	98.1	98.2	98.2	98.3	98.4
Calves	97.9	97.4	96.8	95.9	97.6
Hogs	98.5	98.4	98.7	98.4	98.5
Sheep	95.4	94.4	95.0	95.5	95.3

## U.S. Monthly Commercial Red Meat Production

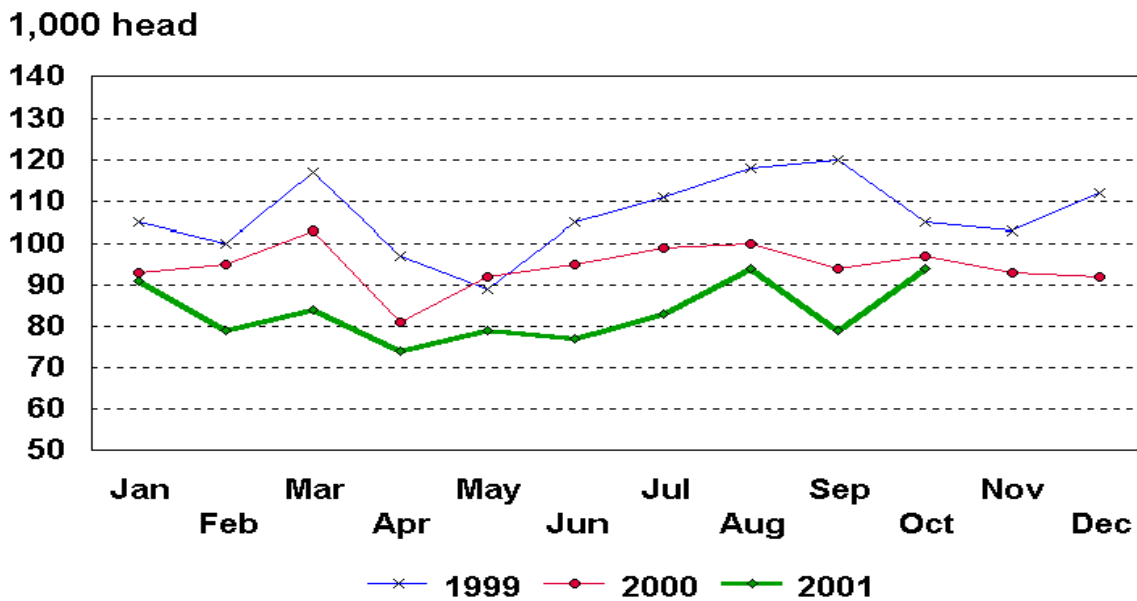
Million Pounds



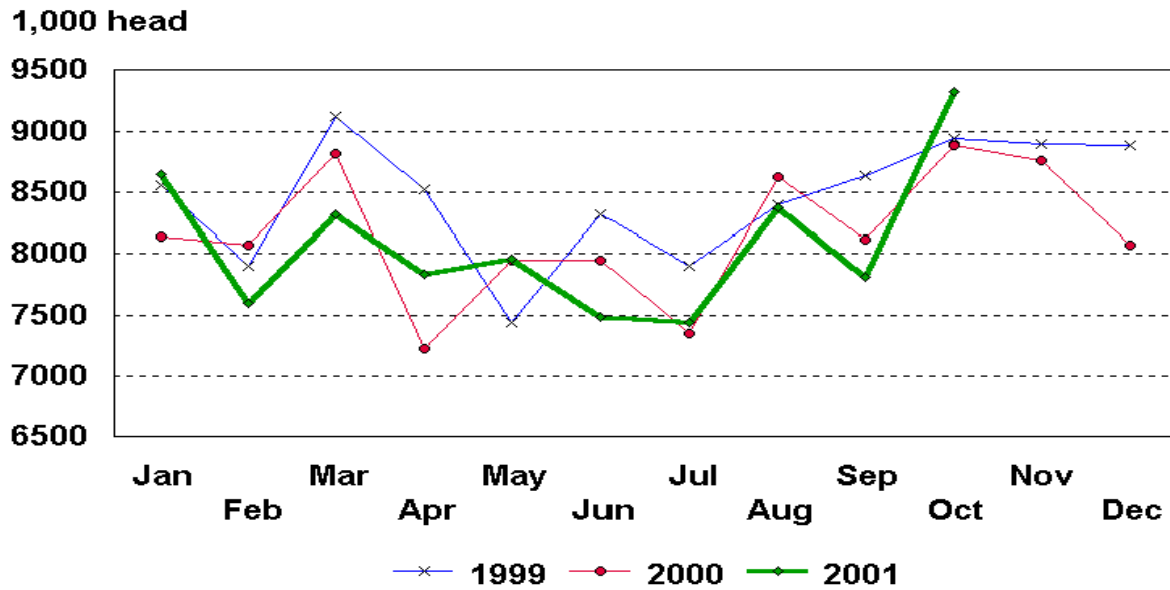
# U.S. Monthly Commercial Slaughter Cattle



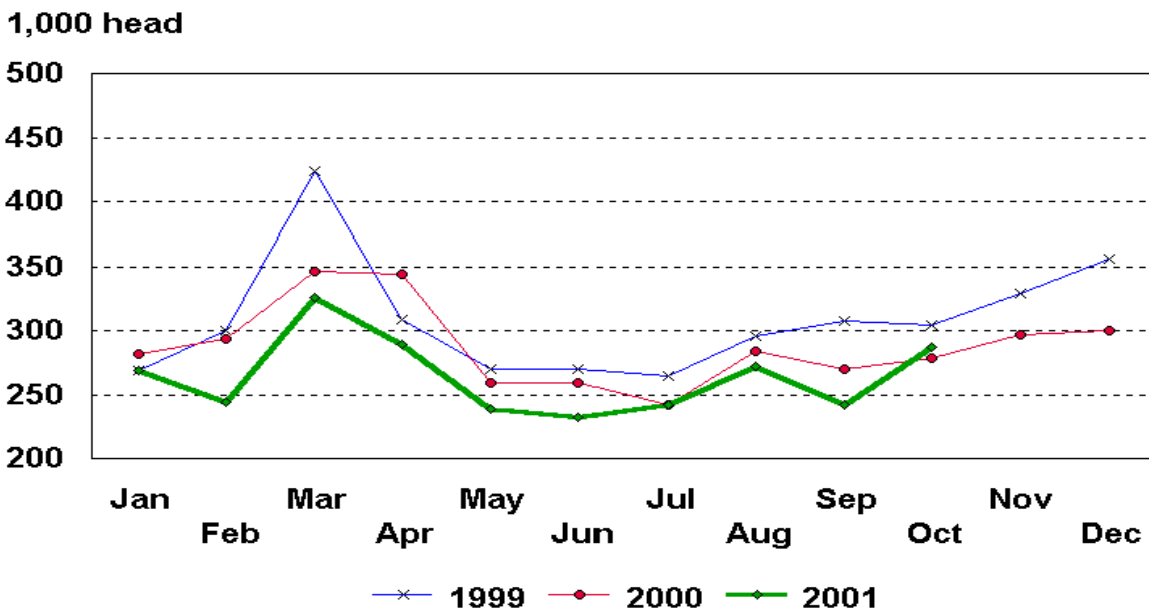
# U.S. Monthly Commercial Slaughter Calves



# U.S. Monthly Commercial Slaughter Hogs

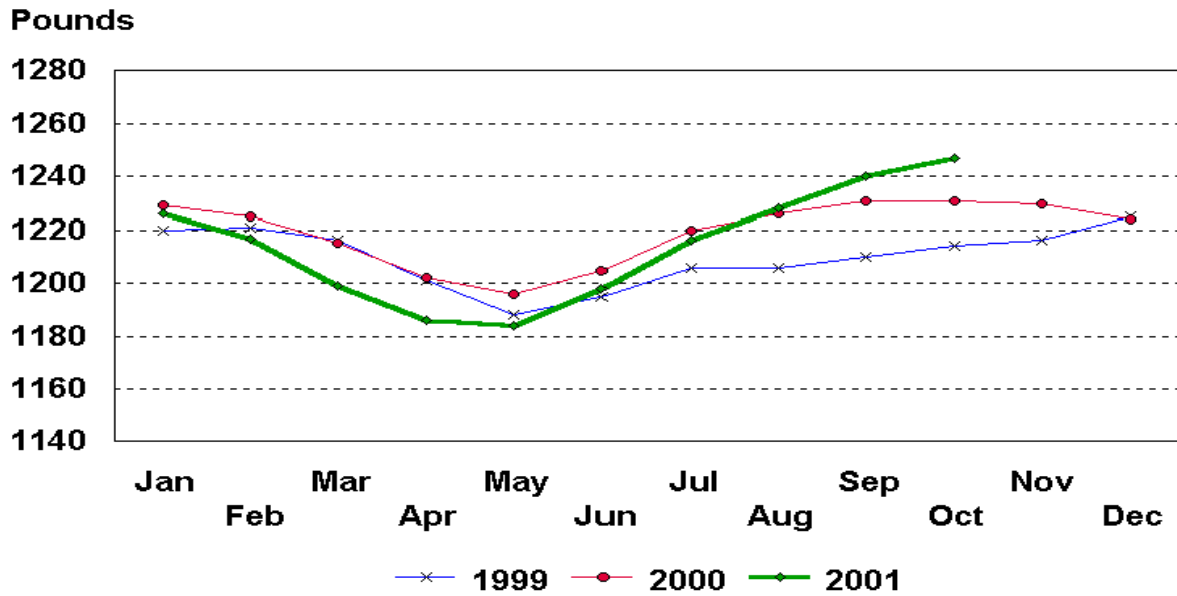


# U.S. Monthly Commercial Slaughter Sheep

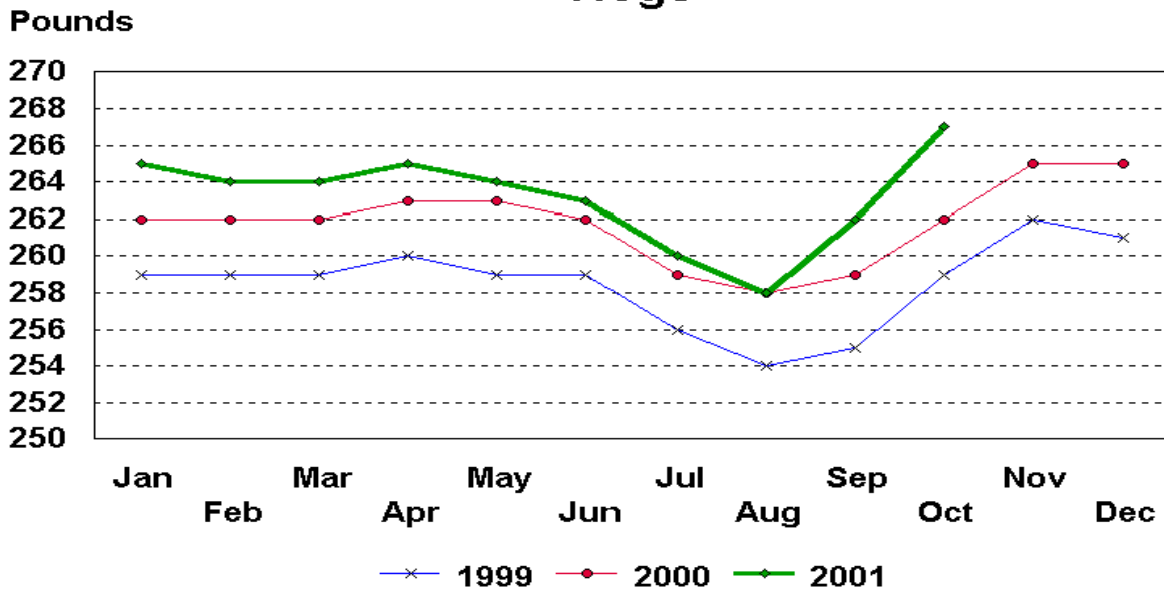




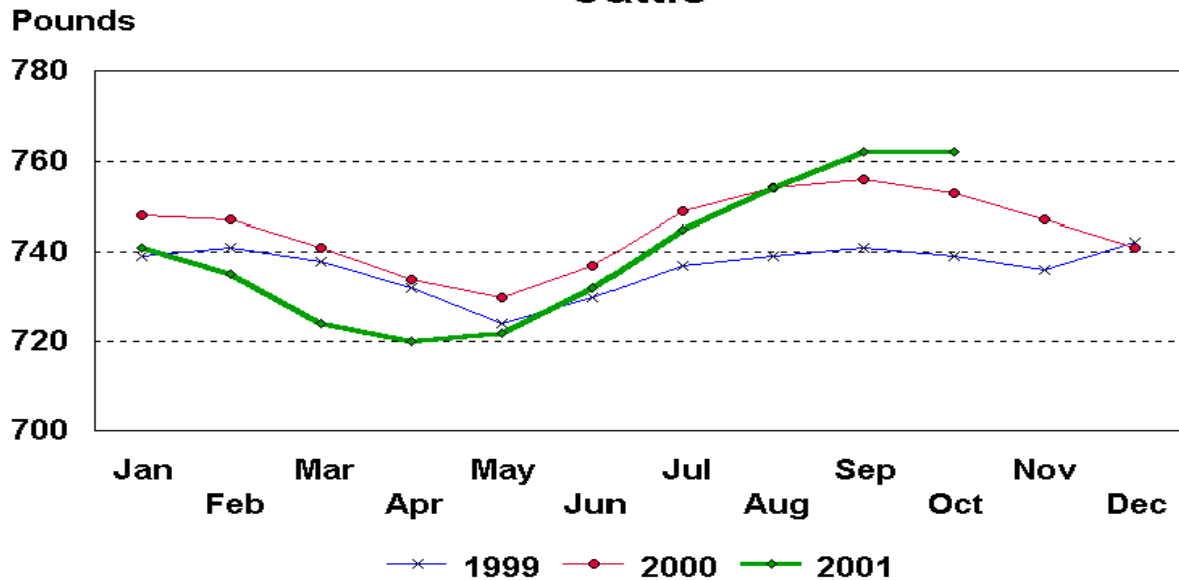
# U.S. Monthly Commercial Slaughter Average Live Weight Cattle



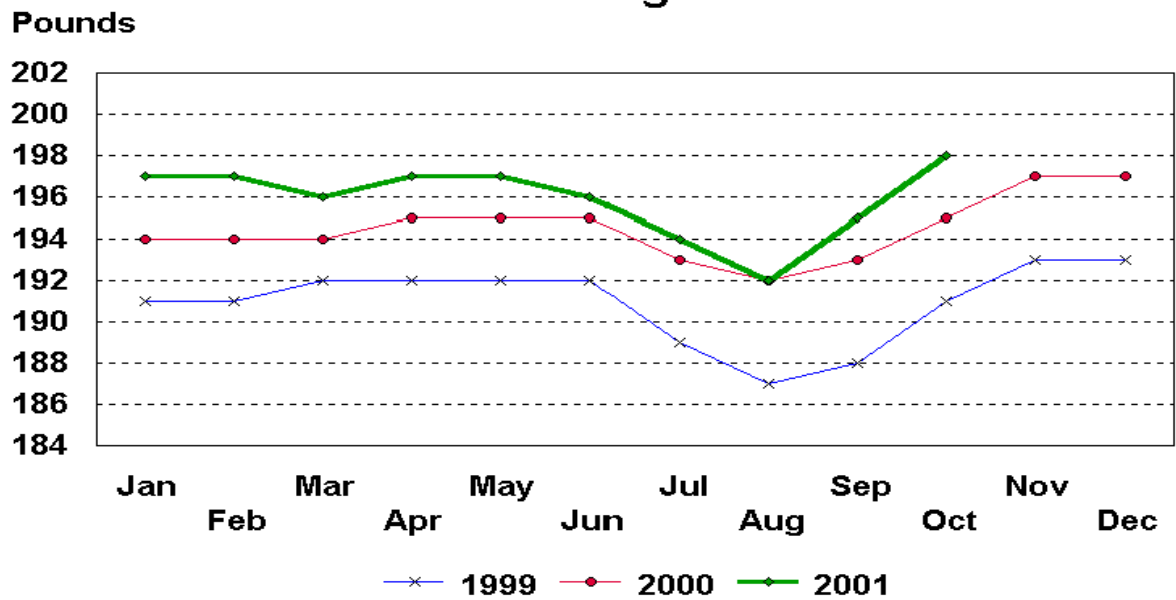
# U.S. Monthly Commercial Slaughter Average Live Weight Hogs



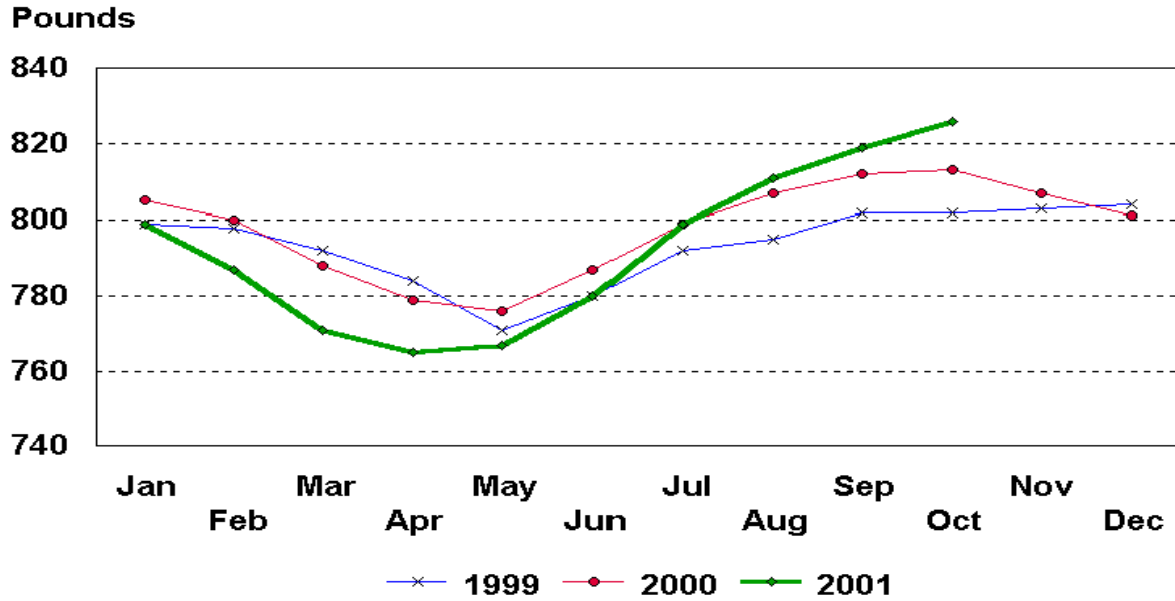
## U.S. Monthly Federally Inspected Average Dressed Weight Cattle



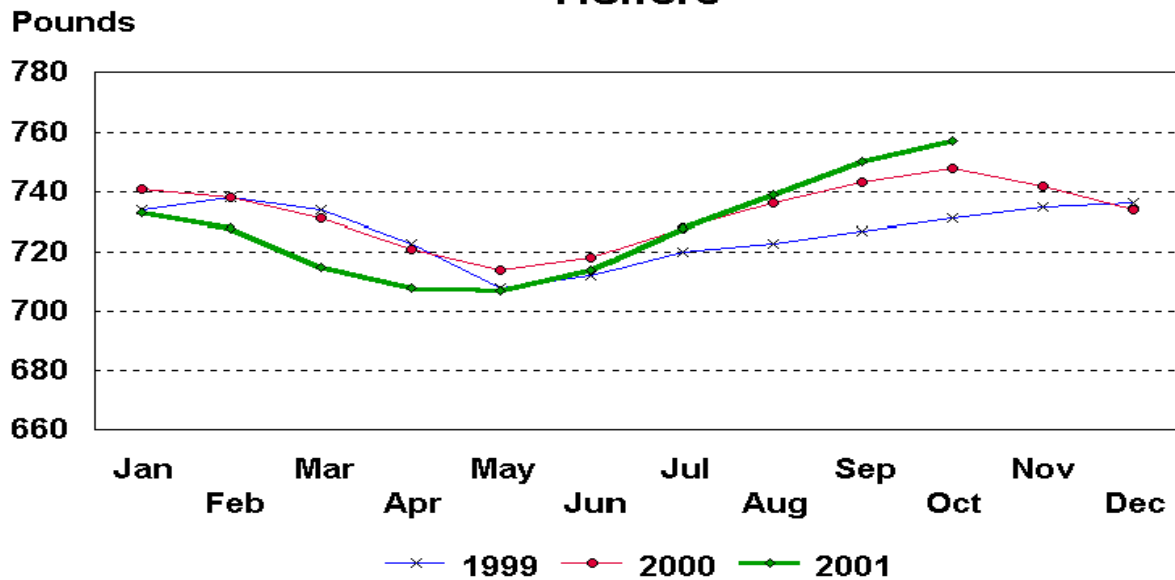
## U.S. Monthly Federally Inspected Average Dressed Weight Hogs



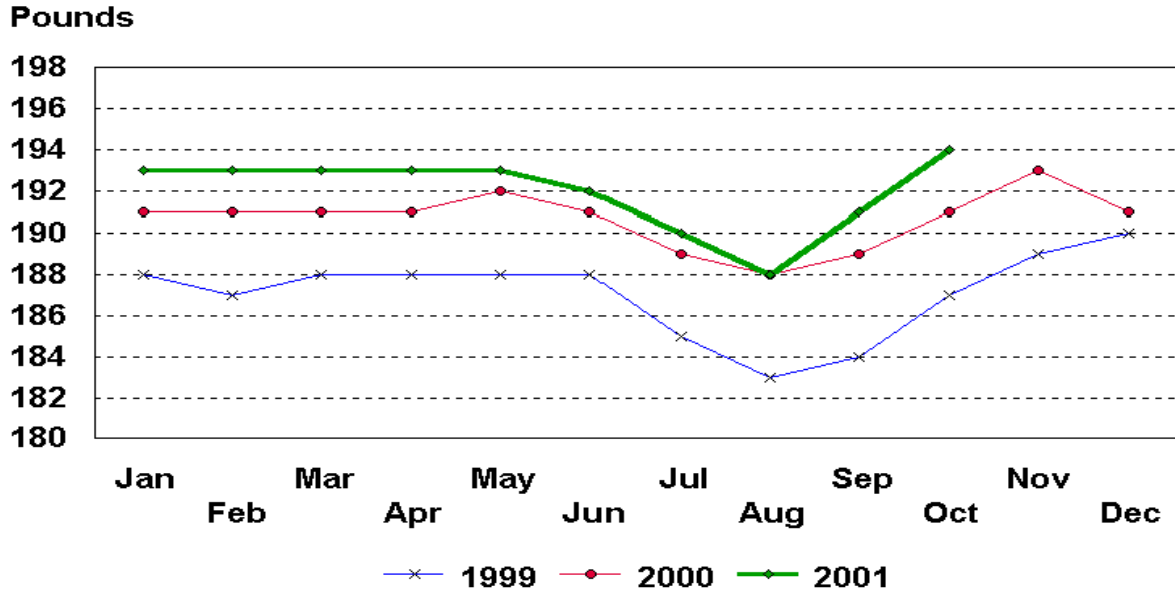
## U.S. Monthly Federally Inspected Average Dressed Weight Steers



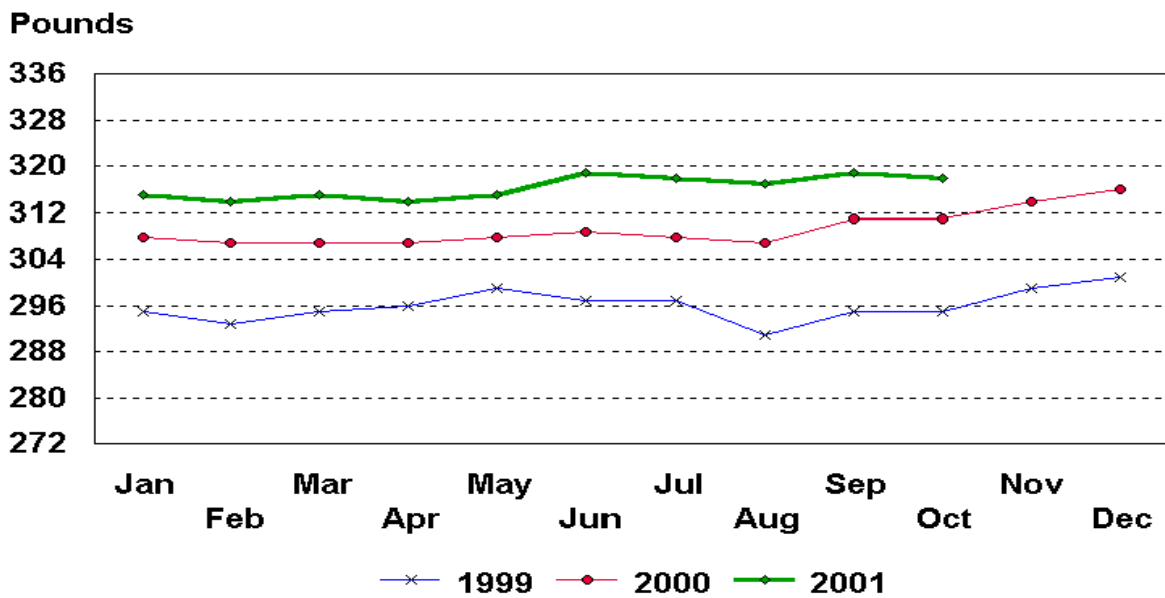
## U.S. Monthly Federally Inspected Average Dressed Weight Heifers



## U.S. Monthly Federally Inspected Average Dressed Weight Barrows and Gilts



## U.S. Monthly Federally Inspected Average Dressed Weight Sows



## Livestock Slaughter Estimates

**Data Sources:** Primary data for the commercial livestock slaughter estimates are obtained from the **Weekly Livestock Slaughter Report** (LS-149), completed by inspectors from the Food Safety and Inspection Service (FSIS), USDA, which provide actual counts of animals slaughtered in Federally Inspected (FI) plants. These counts are combined with data from State-administered Non-Federally Inspected (NFI) slaughter plants to derive total commercial slaughter estimates. Over 95 percent of the total U.S. slaughter for any species is under FI. The LS-149 forms collect number of head slaughtered daily under FI by species and class as well as head kill after condemnation and total live and dressed weights.

Slightly over 900 plants in the U.S. are operated under Federal Inspection and 2,400 plants under State inspection. Slaughter from State-inspected Talmedge-Aiken plants is included in FI totals (see Types of Plants, page 22). To prevent duplication in reporting between NFI and FI plants and assure all FI plants are included, certificates prepared by FSIS identifying operating status are constantly monitored.

**Revision Policy:** Revisions are generally the result of late or corrected data and are less than one-half of 1 percent. Revisions for the previous month and the year-to-date totals are noted in each monthly release by an (\*) or a footnote. Final data are published in the annual summary.

**Procedures and Reliability:** Individual inspectors may be contacted by telephone if the **Weekly Livestock Slaughter Report** (LS-149) is not received by NASS in time for summarization. This assures that all plants slaughtering a large number of head or several species are accounted for each week.

All head kill data are tabulated on a weekly basis approximately two weeks after the kill week. A computer edit compares each plant's data with the historical data for that plant. The edit provides a missing reports listing for follow-up telephone contact and imputes missing weight data. In addition, data are checked for unusual values for species, class, head kill, and pattern of kill generally, based on each plant's past operating profile.

Usually, if a form is not received by mail, data for plants slaughtering fewer than 50 total head weekly of only one species are imputed. Imputation of live and dressed weight data may also be necessary on partially completed forms for any plant. The imputation is based on the data history of each respective plant and represents the recent operating characteristics until final data are tabulated. Imputed head kill for missing plants usually is less than 1 percent of the U.S. head kill totals. Imputation for live and dressed weight data for cattle is about 15 percent and for hogs about 10 percent. The imputation for calves and sheep is more frequent and variable.

Head kill for FI slaughter before condemnation is for the actual days of the survey month, while head kill after condemnation and live and dressed weight data are for full weeks only. Average live and dressed weight and dressing percentages by State are compared with the previous week as an additional check. Fluctuations are frequently the result of plants permanently or temporarily closing and a shift in the kind of animal reported.

FI data are summarized weekly and accumulated to a monthly total for this release, while NFI data are summarized monthly only. These weekly totals are published by USDA's Agricultural Marketing Service (AMS) in **Livestock, Meat, Wool Market News**, Weekly Summary and Statistics.

Livestock slaughter estimates are based on a census of operating plants, and, therefore, have no sampling error. However, they may be subject to errors such as omissions, duplications and mistakes in reporting, recording and processing the data. These errors are minimized through rigid quality controls in the edit and summarization process, and a careful review of all reported data for consistency and reasonableness.

Generally, no data are published if less than three plants operate for a species in a State or if one plant has 60 percent or more of the total commercial slaughter for a species. These data are included in U.S. totals. A review of the reported data is made annually.

### **Types of Plants**

There are generally **four types** of slaughtering plants.

- (1) **Federally Inspected (FI) Plants:** Plants that transport meat interstate must employ federal inspectors to assure compliance with USDA standards. Any State whose commercial plants operate entirely under federal inspection may still have custom-exempt establishments for which NFI estimates are made.
- (2) **Talmedge-Aiken (TA) Plants:** Slaughter plants in which USDA is responsible for inspection. However, federal inspection is carried out by State employees. These plants are considered to be federally inspected.
- (3) **Non-Federally Inspected (NFI) Plants:** Plants which sell and transport only intrastate. State inspectors assure compliance with individual State standards for these NFI plants. Mobile slaughtering units are excluded and are considered farm slaughter.
- (4) **Custom-Exempt Plants:** Plants that do not sell meat but operate on a custom basis only are custom-exempt. The animals and meat are not inspected, but the facilities must meet health standards. These are considered NFI plants and head kill is included in NFI totals.

## Terms and Definitions

**Commercial Production:** Includes slaughter and meat production in federally inspected and other plants, but excludes animals slaughtered on farms.

**Dressed Weight:** The weight of a chilled animal carcass. Beef with kidney knob in; veal with hide off; lamb and mutton with pluck out; pork with leaf fat and kidneys out, jowls on and head off.

**Dressing Percent:** Is usually expressed as a percentage yield of chilled carcass in relation to the weight of the live animal on hoof. For example, a live hog that weighed 200 pounds on hoof and yielded a carcass weighing 140 pounds would have a dressing percentage of 70.

**Food and Meat Inspection:** Includes examination, checking, or testing of a carcass and/or meat against established government standards and involves checking the facility for cleanliness, health of animals, or parts of animals and quality of the meat produced.

**Live Weight:** The gross weight of a live animal when received at the slaughter plant.

**Plant, Slaughter:** An establishment where animals are killed and butchered.

**Red Meat:** Red meat production is the carcass weight after slaughter including beef, veal, pork, and lamb and mutton. It is derived using the number of head times average dressed weight for FI and NFI separately. FI head kill must be adjusted for condemnations using the factor derived from the FSIS inspection reports.

The FI meat production formula is  $(\text{FI head kill}) \times (1 - \text{condemnation factor}) \times (\text{average dressed weight}) = \text{FI red meat production}$ . The condemnation factor is the number of animals condemned as a percentage of the total kill. It has been fairly stable for the last five years; running about 1.75 head per 100 head for calves, .5 per 100 for cattle, .35 per 100 for hogs and .25 per 100 for sheep. The NFI meat production formula is  $(\text{NFI head kill}) \times (\text{live weight}) \times (\text{FI dressing percentage}) = \text{NFI red meat production}$ .

**Slaughter:** Killing and butchering of animals primarily for food.

**Slaughter, Farm:** Animals slaughtered on farms primarily for home consumption. Excludes custom slaughter for farmers at commercial establishments, but includes mobile slaughtering on farms. These estimates appear only in the annual slaughter release.

**Wholesome Meat Act:** Legislation that specifies that all meat produced for sale in the U.S. must be inspected; and further, meat that is transported interstate must be inspected in compliance with federal (USDA) standards.

## Index

	<b>Page</b>
Commercial Calf Slaughter, Number, Total, and Average Live weight, by State and U.S. ....	6
Commercial Cattle Slaughter, Number, Total, and Average Live weight, by State and U.S. ....	5
Commercial Hog Slaughter, Number, Total and Average Live weight, by State and U.S. ....	7
Commercial Red Meat Production, by State and U.S. ....	4
Commercial Sheep and Lamb Slaughter, Number, Total, and Average Live weight, by State and U.S. ....	8
Data Sources, Revision Policy, and Procedures and Reliability ....	21
Federally Inspected Classification of Number and Average Dressed Weight, by Species and Class and U.S. ....	9
Federally Inspected Number by Species and Class, by Regions and U.S. ....	10
Federally Inspected Number by Species and Class, by State and U.S. ....	12
Federally Inspected Percent of Total Commercial, by Species, U.S. ....	14
Livestock Slaughter, Number and Average Weights, by Species and Type of Slaughter, U.S. ....	3
Red Meat Production, Commercial and FI, by Class, U.S ....	2
Terms and Definitions ....	23
Types of Plants ....	22



The next "Livestock Slaughter" report will be released at 3 p.m. on December 21, 2001.

The United States Department of Agriculture (USDA) prohibits discrimination in all its programs on the basis of race, color, national origin, gender, religion, age, disability, political beliefs, sexual orientation, and marital or family status. (Not all prohibited bases apply to all programs.) Persons with disabilities who require alternative means for communication of program information (braille, large print, audiotape, etc.) should contact the USDA's TARGET Center at 202-720-2600 (voice and TDD).

To file a complaint of discrimination, write USDA, Director, Office of Civil Rights, Room 326-W, Whitten Building, 14th and Independence Avenue, SW, Washington, D.C., 20250-9410, or call 202-720-5964 (voice or TDD). USDA is an equal opportunity provider and employer.

---

## ACCESS TO REPORTS!!

---

For your convenience, there are several ways to obtain NASS reports, data products, and services:

### INTERNET ACCESS

All NASS reports are available free of charge on the worldwide Internet. For access, connect to the Internet and go to the NASS Home Page at: <http://www.usda.gov/nass/>. Select "Today's Reports" or Publications and then Reports by Calendar or Publications and then Search, by Title or Subject.

### E-MAIL SUBSCRIPTION

All NASS reports are available by subscription free of charge direct to your e-mail address. Send an e-mail message to: [usda-reports@usda.mannlib.cornell.edu](mailto:usda-reports@usda.mannlib.cornell.edu). In the body of the message type the word: **list**.

### AUTOFAX ACCESS

NASSFax service is available for some reports from your fax machine. Please call 202-720-2000, using the handset attached to your fax. Respond to the voice prompts. Document 0411 is a list of available reports.

-----

### PRINTED REPORTS OR DATA PRODUCTS

CALL OUR TOLL-FREE ORDER DESK: 800-999-6779 (U.S. and Canada)  
Other areas, please call 703-834-0125 FAX: 703-834-0110  
(Visa, MasterCard, check, or money order acceptable for payment.)

-----

### ASSISTANCE

For **assistance** with general agricultural statistics or further information about NASS or its products or services, contact the **Agricultural Statistics Hotline** at **800-727-9540**, 7:30 a.m. to 4:00 p.m. ET, or e-mail: [nass@nass.usda.gov](mailto:nass@nass.usda.gov).