



Livestock Slaughter

Released January 24, 2003, by the National Agricultural Statistics Service (NASS), Agricultural Statistics Board, U.S. Department of Agriculture. For information on "Livestock Slaughter" call Liana Cuffman at (515) 284-4340, office hours 8:00 a.m. to 4:30 p.m. CT.

Red Meat Production Up 1 Percent from Last Year

Commercial red meat production for the United States totaled 3.86 billion pounds in December, up 1 percent from the 3.81 billion pounds produced in December 2001.

December 2001 contained 21 weekdays (including one holiday) and 5 Saturdays.
December 2002 contained 22 weekdays (including one holiday) and 4 Saturdays.

Beef production, at 2.11 billion pounds, was slightly below the previous year. Cattle slaughter totaled 2.77 million head, down slightly from December 2001. The average live weight was 1,265 pounds, up 9 pounds from December a year ago.

Veal production totaled 18.0 million pounds, 15 percent above December a year ago. Calf slaughter totaled 98,300 head, up 16 percent from December 2001. The average live weight was 305 pounds, down 4 pounds from December a year ago.

Pork production totaled 1.72 billion pounds, up 3 percent from the previous year. Hog kill totaled 8.66 million head, 3 percent above December 2001. The average live weight was 268 pounds, unchanged from December a year ago.

Lamb and mutton production, at 18.5 million pounds, was down 3 percent from December 2001. Sheep slaughter totaled 278,500 head, slightly below last year. The average live weight was 133 pounds, down 5 pounds from December a year ago.

January - December red meat production was 47.2 billion pounds, 3 percent above the previous year. Accumulated beef production was up 4 percent from last year, veal was up 1 percent, pork was up 3 percent, and lamb and mutton production was down 3 percent.

Commercial Red Meat Production: United States ¹

Class	Dec 2001	Nov 2002	Dec 2002	Dec 02 % of		Jan - Dec ²		
				Dec 2001	Nov 2002	2001	2002	02 as % of 01
	<i>Million Pounds</i>	<i>Million Pounds</i>	<i>Million Pounds</i>	<i>Percent</i>	<i>Percent</i>	<i>Million Pounds</i>	<i>Million Pounds</i>	<i>Percent</i>
Beef	2,110	2,164	2,107	100	97	26,108	27,090	104
Veal	15.7	16.9	18.0	115	107	194.3	195.6	101
Pork	1,668	1,709	1,715	103	100	19,139	19,665	103
Lamb & Mutton	19.2	17.8	18.5	97	104	223.8	217.7	97
Total Red Meat	3,814	3,907	3,859	101	99	45,664	47,168	103

¹ Based on packers' dressed weights and excludes farm slaughter.

² Accumulated totals and percentages based on unrounded data.

Federally Inspected Red Meat Production: United States ¹

Class	Dec 2001	Nov 2002	Dec 2002	Dec 02 % of		Jan - Dec ²		
				Dec 2001	Nov 2002	2001	2002	02 as % of 01
	<i>Million Pounds</i>	<i>Million Pounds</i>	<i>Million Pounds</i>	<i>Percent</i>	<i>Percent</i>	<i>Million Pounds</i>	<i>Million Pounds</i>	<i>Percent</i>
Beef	2,078	2,134	2,075	100	97	25,743	26,714	104
Veal	15.2	16.3	17.4	115	107	187.8	189.5	101
Pork	1,648	1,691	1,694	103	100	18,899	19,437	103
Lamb & Mutton	18.4	*17.1	17.8	96	104	215.6	208.7	97
Total Red Meat	3,759	3,859	3,804	101	99	45,045	46,549	103

* Revised.

¹ Based on packers' dressed weights and excludes farm slaughter.

² Accumulated totals and percentages based on unrounded data.

Livestock Slaughter: Number and Average Weights, United States ¹

Species	Unit	Dec 2001	Nov 2002	Dec 2002	Dec 02 % of		Jan - Dec ²		
					Dec 2001	Nov 2002	2001	2002	02 % of 01
					<i>Percent</i>	<i>Percent</i>			<i>Prct</i>
Cattle No.									
Fed. Insp.	Thou	2,725.7	2,812.4	2,718.8	100	97	34,770.7	35,120.2	101
Other	Thou	53.6	48.9	53.2	99	109	599.0	610.8	102
Comm'l. ³	Thou	2,779.3	2,861.3	2,772.0	100	97	35,369.7	35,731.0	101
Live Wt/Hd									
Fed. Insp.	Lbs	1,259	1,264	1,268	101	100	1,224	1,253	102
Other	Lbs	1,087	1,069	1,089	100	102	1,082	1,092	101
Comm'l.	Lbs	1,256	1,260	1,265	101	100	1,221	1,251	102
Calves No.									
Fed. Insp.	Thou	82.1	88.4	95.8	117	108	980.7	1,019.2	104
Other	Thou	2.4	2.7	2.4	100	90	26.0	25.1	97
Comm'l. ³	Thou	84.6	91.1	98.3	116	108	1,006.7	1,044.3	104
Live Wt/Hd									
Fed. Insp.	Lbs	305	306	303	99	99	318	310	97
Other	Lbs	391	388	403	103	104	412	406	98
Comm'l.	Lbs	309	308	305	99	99	320	311	97
Hogs No.									
Fed. Insp.	Thou	8,297.9	8,547.8	8,534.1	103	100	96,528.0	98,914.7	102
Other	Thou	121.2	107.7	124.3	103	115	1,433.8	1,346.9	94
Comm'l. ³	Thou	8,419.1	8,655.5	8,658.4	103	100	97,961.9	100,261.6	102
Live Wt/Hd									
Fed. Insp.	Lbs	268	268	268	100	100	265	265	100
Other	Lbs	235	229	230	98	100	231	232	100
Comm'l.	Lbs	268	268	268	100	100	264	265	100
Sheep&Lambs No.									
Fed. Insp.	Thou	266.0	*255.4	262.3	99	103	3,065.0	3,092.3	101
Other	Thou	13.6	15.9	16.2	119	102	157.2	183.9	117
Comm'l. ³	Thou	279.6	271.3	278.5	100	103	3,222.1	3,276.1	102
Live Wt/Hd									
Fed. Insp.	Lbs	140	134	136	97	101	142	135	95
Other	Lbs	106	100	97	91	97	106	101	96
Comm'l.	Lbs	138	132	133	96	101	140	133	95

* Revised.

¹ Excludes slaughter on farms.

² Accumulated totals and percentages based on unrounded data.

³ Totals may not equal sum of the parts due to rounding.

Commercial Red Meat Production: By State and United States ¹

State	Dec 2001	Nov 2002	Dec 2002	Dec 02 as % of ²	
				Dec 2001	Nov 2002
	<i>Million Pounds</i>	<i>Million Pounds</i>	<i>Million Pounds</i>	<i>Percent</i>	<i>Percent</i>
AL	3.9	3.5	3.4	87	97
AK					
AZ	36.4	36.1	36.3	100	101
AR	6.3	6.4	6.6	105	102
CA	97.6	109.5	120.6	123	110
CO	157.8	153.4	160.9	102	105
DE-MD	2.9	3.0	3.0	103	99
FL	5.8	5.7	5.8	99	102
GA	21.4	16.8	19.2	90	114
HI	1.0	1.0	1.0	94	100
ID	51.9	53.6	50.3	97	94
IL	211.1	233.2	220.1	104	94
IN	117.0	117.5	119.6	102	102
IA	531.9	541.6	528.1	99	98
KS	488.4	458.5	454.0	93	99
KY	40.1	41.8	39.8	99	95
LA	1.4	1.5	1.3	89	87
MI	32.7	32.8	34.1	104	104
MN	185.1	201.0	202.2	109	101
MS	24.9	25.2	25.5	102	101
MO	38.6	37.7	39.8	103	106
MT	1.6	1.5	1.6	102	112
NE	591.9	630.3	597.6	101	95
NV	0.1	0.1	0.1	107	93
N ENG ³	1.7	1.8	1.9	110	103
NJ	5.3	5.2	5.8	109	111
NM	0.9	0.9	0.8	96	88
NY	3.4	3.7	4.0	115	107
NC	167.1	178.0	183.7	110	103
ND	3.0	2.7	3.0	100	109
OH	25.2	26.4	27.6	110	104
OK	83.9	86.9	86.7	103	100
OR	3.4	3.4	3.4	101	101
PA	102.9	109.2	110.9	108	102
SC	19.6	20.4	20.9	107	102
SD	86.8	74.8	73.6	85	98
TN	20.2	20.7	20.5	101	99
TX	372.0	387.2	369.6	99	95
UT	39.8	40.6	39.8	100	98
VA	68.5	70.6	69.0	101	98
WA	53.0	53.0	51.7	98	98
WV	0.8	1.0	0.9	113	94
WI	105.8	108.7	113.7	108	105
WY	0.4	0.4	0.5	125	122
US	3,813.6	3,907.3	3,858.7	101	99

¹ Includes total beef, veal, pork, lamb, and mutton.

² Percentages based on unrounded data.

³ N ENG includes CT, ME, MA, NH, RI, and VT.

**Commercial Cattle Slaughter: By State and United States,
December 2001 and 2002 ¹**

State	Number Slaughtered		Total Live Weight		Average Live Weight	
	2001	2002	2001	2002	2001	2002
	<i>1,000 Head</i>	<i>1,000 Head</i>	<i>1,000 Pounds</i>	<i>1,000 Pounds</i>	<i>Pounds</i>	<i>Pounds</i>
AL	0.5	0.5	383	392	828	850
AK						
AZ	47.7	47.1	61,871	63,017	1,297	1,339
AR	1.2	1.2	1,002	1,024	847	825
CA	82.8	111.3	107,910	143,135	1,303	1,286
CO	186.6	187.5	237,089	244,091	1,271	1,302
DE-MD	3.0	3.1	3,696	3,920	1,223	1,264
FL	8.1	8.4	8,609	8,985	1,069	1,068
GA	29.9	27.0	34,231	32,247	1,145	1,193
HI	1.0	0.8	960	858	991	1,028
ID	69.6	66.9	85,090	84,004	1,223	1,256
IL	76.2	71.2	95,756	90,131	1,257	1,265
IN	3.5	3.6	3,625	3,810	1,048	1,052
IA	56.9	52.8	73,413	68,326	1,291	1,294
KS	604.4	560.5	753,563	703,721	1,247	1,256
KY	1.6	1.8	1,324	1,518	844	863
LA	1.4	1.1	1,208	887	867	826
MI	34.7	37.6	48,941	52,100	1,409	1,386
MN	58.9	71.8	80,385	97,413	1,364	1,357
MS						
MO	8.8	8.2	10,908	10,372	1,245	1,265
MT	1.9	2.0	2,247	2,322	1,168	1,152
NE	594.5	592.9	770,729	778,820	1,296	1,314
NV	0.1	0.1	75	86	997	1,035
N ENG ²	1.8	2.0	1,897	2,104	1,059	1,068
NJ	2.3	2.5	2,616	2,928	1,150	1,187
NM	1.5	1.6	1,521	1,489	982	908
NY	4.2	4.6	4,517	4,844	1,084	1,062
NC	15.4	18.5	16,422	19,003	1,063	1,030
ND	1.3	1.3	1,422	1,464	1,111	1,148
OH	11.8	10.8	13,463	12,276	1,139	1,133
OK	3.4	3.4	3,233	3,393	940	986
OR	1.3	1.1	1,548	1,396	1,208	1,220
PA	74.7	85.8	95,575	108,691	1,279	1,266
SC						
SD	27.2	16.1	37,506	20,404	1,379	1,267
TN	1.4	1.4	1,155	1,239	846	879
TX	490.1	489.8	581,042	582,969	1,186	1,190
UT	50.5	49.2	62,343	62,024	1,234	1,262
VA	1.3	1.0	1,202	1,011	911	998
WA	68.5	66.8	86,246	84,696	1,260	1,268
WV	1.2	1.3	1,077	1,241	870	921
WI	135.6	143.7	179,710	189,619	1,325	1,320
WY	0.6	0.7	648	827	1,117	1,176
US ³	2,779.3	2,772.0	3,489,696	3,506,477	1,256	1,265

¹ Includes slaughter under Federal inspection and other Commercial slaughter, excludes farm slaughter.

² N ENG includes CT, ME, MA, NH, RI, and VT.

³ States with no data printed are still included in the US total. Data not printed to avoid disclosing individual operations.

**Commercial Calf Slaughter: By State and United States,
December 2001 and 2002 ¹**

State	Number Slaughtered		Total Live Weight		Average Live Weight	
	2001	2002	2001	2002	2001	2002
	<i>1,000 Head</i>	<i>1,000 Head</i>	<i>1,000 Pounds</i>	<i>1,000 Pounds</i>	<i>Pounds</i>	<i>Pounds</i>
AL						
AK						
AZ						
AR						
CA	8.7	11.9	1,556	1,634	180	137
CO						
DE-MD	0.1	0.1	41	34	325	309
FL						
GA						
HI						
ID						
IL	9.1	9.0	3,943	4,055	435	451
IN	7.4	0.8	2,369	97	319	125
IA						
KS						
KY						
LA	0.8	0.9	372	449	485	485
MI	3.0	1.7	1,266	772	429	443
MN						
MS						
MO	0.2	0.1	73	31	426	360
MT						
NE						
NV						
N ENG ²	2.2	2.8	257	317	115	114
NJ	9.6	10.9	4,300	5,050	447	464
NM						
NY	13.5	15.9	1,215	1,589	90	100
NC	0.2	0.1	64	54	400	388
ND						
OH	0.1	4.6	13	1,895	195	414
OK	0.1	0.1	50	62	441	470
OR						
PA	13.2	18.1	4,703	5,921	356	328
SC						
SD						
TN						
TX	2.0	3.2	717	1,126	358	352
UT						
VA						
WA						
WV						
WI	10.3	13.1	4,419	5,936	429	452
WY						
US ³	84.6	98.3	26,144	29,971	309	305

¹ Includes slaughter under Federal inspection and other Commercial slaughter, excludes farm slaughter.

² N ENG includes CT, ME, MA, NH, RI, and VT.

³ States with no data printed are still included in the US total. Data not printed to avoid disclosing individual operations.

**Commercial Hog Slaughter: By State and United States,
December 2001 and 2002 ¹**

State	Number Slaughtered		Total Live Weight		Average Live Weight	
	2001	2002	2001	2002	2001	2002
	<i>1,000 Head</i>	<i>1,000 Head</i>	<i>1,000 Pounds</i>	<i>1,000 Pounds</i>	<i>Pounds</i>	<i>Pounds</i>
AL	11.0	9.3	5,800	4,869	526	526
AK						
AZ	0.5	0.1	114	22	228	243
AR						
CA	230.9	228.2	53,122	54,428	230	238
CO	1.0	1.1	234	256	224	227
DE-MD	1.6	1.9	422	527	265	280
FL	12.2	9.1	1,997	1,559	164	171
GA	14.1	15.0	3,665	3,681	260	245
HI	3.2	3.1	648	652	203	210
ID						
IL	735.7	797.5	198,936	216,302	270	271
IN	570.7	595.0	150,229	155,644	263	262
IA	2,426.1	2,432.3	654,502	651,875	270	268
KS	28.5	26.2	9,354	8,780	329	335
KY	198.3	196.0	52,675	52,240	266	266
LA	3.2	3.0	555	555	174	183
MI	9.3	10.5	3,528	3,874	380	369
MN	734.5	774.8	193,588	204,828	264	264
MS						
MO	168.8	176.4	43,752		259	
MT	1.3	1.3	318	306	255	244
NE	600.7	610.4	160,982	163,255	268	267
NV						
N ENG ²	2.7	2.7	657	708	244	267
NJ	12.9	11.4	1,221	995	95	87
NM	0.1	0.1	28	25	212	211
NY	3.0	3.4	536	599	180	177
NC	829.2	895.7	211,458	230,910	255	258
ND	13.4	14.0	3,171	3,205	236	229
OH	96.5	104.6	25,295	27,899	262	267
OK	387.3	399.5	110,135	113,740	284	285
OR	15.9	15.8	4,035	4,156	254	262
PA	251.4	258.8	63,872	64,636	254	250
SC						
SD	347.2	333.1	92,201	86,945	266	261
TN	60.0	62.1	29,250	29,628	488	477
TX	34.6	41.0	11,162	11,930	322	291
UT	5.8	5.3	1,052	1,025	180	192
VA	349.3	350.0	90,368	91,245	259	261
WA	1.8	1.7	448	441	255	252
WV	0.9	0.9	260	256	280	274
WI	28.9	32.6	12,794	13,719	442	421
WY	0.2	0.3	56	70	271	237
US ³	8,419.1	8,658.4	2,255,194	2,316,548	268	268

¹ Includes slaughter under Federal inspection and other Commercial slaughter, excludes farm slaughter.

² N ENG includes CT, ME, MA, NH, RI, and VT.

³ States with no data printed are still included in the US total. Data not printed to avoid disclosing individual operations.

**Commercial Sheep and Lamb Slaughter: By State and United States,
December 2001 and 2002 ¹**

State	Number Slaughtered		Total Live Weight		Average Live Weight	
	2001	2002	2001	2002	2001	2002
	<i>1,000 Head</i>	<i>1,000 Head</i>	<i>1,000 Pounds</i>	<i>1,000 Pounds</i>	<i>Pounds</i>	<i>Pounds</i>
AL						
AK						
AZ		0.1		6		95
AR						
CA						
CO	98.6	93.7	15,246	13,677	155	146
DE-MD	3.2	3.0	354	331	110	111
FL	0.3	0.3	29	18	89	69
GA	0.4	0.8	48	86	112	111
HI						
ID	0.4	0.3	42	42	111	120
IL	15.9	12.2	2,121	1,618	133	133
IN	3.8	4.0	390	455	102	113
IA	40.5	39.9	5,900	5,914	146	148
KS	0.1	0.1	12	10	123	119
KY	0.9	0.9	130	110	152	122
LA	0.1	0.1	10	8	72	79
MI	16.1	17.0	1,948	2,038	121	120
MN	0.3	0.3	28	30	112	108
MS						
MO	0.7	0.6	75	64	103	104
MT	0.5	0.4	57	50	127	124
NE	0.1	0.1	6	9	111	128
NV	0.1	0.1	13	10	130	131
N ENG ²	2.5	2.6	270	258	106	101
NJ	10.9	10.0	1,040	983	96	98
NM	2.4	2.5	270	273	112	110
NY	1.8	3.4	146	302	80	89
NC	0.1	0.1	9	6	113	96
ND						
OH	1.4	1.0	171	105	121	102
OK		0.1		4		80
OR	0.9	1.1	125	119	142	111
PA	5.2	7.2	562	775	107	107
SC						
SD	1.4	1.2	149	146	107	120
TN	0.5	0.5	36	42	77	78
TX	37.7	29.4	5,162	3,482	137	118
UT	2.6	3.1	318	382	123	124
VA	0.8	0.8	85	80	105	97
WA	0.7	0.9	85	105	115	119
WV						
WI	1.0	1.1	140	153	140	134
WY	0.2	0.1	23	15	145	134
US ³	279.6	278.5	38,643	37,117	138	133

¹ Includes slaughter under Federal inspection and other Commercial slaughter, excludes farm slaughter.

² N ENG includes CT, ME, MA, NH, RI, and VT.

³ States with no data printed are still included in the US total. Data not printed to avoid disclosing individual operations.

**Classification of Livestock Slaughtered Under Federal Inspection:
United States**

Item	Dec 2001	Nov 2002	Dec 2002	Jan - Dec ¹		Dec 2001	Nov 2002	Dec 2002	Jan - Dec ¹	
				2001	2002				2001	2002
	<i>1,000 Head</i>	<i>1,000 Head</i>	<i>1,000 Head</i>	<i>1,000 Head</i>	<i>1,000 Head</i>	<i>Percent of Total</i>	<i>Percent of Total</i>	<i>Percent of Total</i>	<i>Percent of Total</i>	<i>Percent of Total</i>
Class ²										
Cattle										
Steers	1,351	1,313	1,291	17,097	17,522	49.6	46.7	47.5	49.2	49.9
Heifers	866	945	889	11,379	11,342	31.8	33.6	32.7	32.7	32.3
All Cows	464	508	496	5,674	5,658	17.0	18.0	18.2	16.3	16.1
Dairy Cows	212	231	234	2,582	2,607	7.8	8.2	8.6	7.4	7.4
Other Cows	252	277	262	3,092	3,051	9.2	9.8	9.6	8.9	8.7
Bulls & Stags	45	46	42	620	598	1.6	1.6	1.5	1.8	1.7
Total ¹	2,726	2,812	2,719	34,771	35,120	100.0	100.0	100.0	100.0	100.0
Hogs										
Barrows & Gilts	8,037	8,267	8,254	93,201	95,459	96.9	96.7	96.7	96.6	96.5
Sows	239	258	260	3,009	3,185	2.9	3.0	3.0	3.1	3.2
Stags & Boars	22	22	21	318	271	0.3	0.3	0.2	0.3	0.3
Total ¹	8,298	8,548	8,534	96,528	98,915	100.0	100.0	100.0	100.0	100.0
Sheep										
Mature Sheep	13	13	13	144	148	4.9	4.9	5.1	4.7	4.8
Lambs & Yrlngs	253	243	249	2,921	2,944	95.1	95.1	94.9	95.3	95.2
Total ¹	266	255	262	3,065	3,092	100.0	100.0	100.0	100.0	100.0
Average Dressed Weight ³										
	<i>Pounds</i>	<i>Pounds</i>	<i>Pounds</i>	<i>Pounds</i>	<i>Pounds</i>					
Cattle	766	763	768	744	765					
Steers ⁴	825	831	835	798	823					
Heifers ⁴	764	762	764	734	753					
All Cows ⁴	588	578	585	584	590					
Bulls & Stags ⁴	899	879	892	893	912					
Calves & Vealers	187	188	188	196	190					
Hogs	199	199	199	197	197					
Barrow Gilts ⁵	196	195	196	193	193					
Sows ⁵	318	317	314	316	317					
Stags & Boars ⁵	234	235	239	226	235					
Sheep	70	67	68	70	68					
Mature Sheep ⁶	62	63	62	62	63					
Lamb & Yrlngs ⁶	70	67	68	71	68					

¹ Total and percentages based on unrounded data.

² Species totals and classification reported by meat inspectors, Inspection Operations, FSIS.

³ Based on packer reports.

⁴ Included in cattle average dressed weight.

⁵ Included in hog average dressed weight.

⁶ Included in sheep average dressed weight.

**Federally Inspected Slaughter: By Region and United States,
December 2002¹**

Standard Federal Regions	Cattle							Calves
	Total ²	Steers	Heifers	Cows			Bulls & Stags	Total
				All	Dairy	Other		
	<i>1,000 Head</i>	<i>1,000 Head</i>	<i>1,000 Head</i>	<i>1,000 Head</i>	<i>1,000 Head</i>	<i>1,000 Head</i>	<i>1,000 Head</i>	<i>1,000 Head</i>
1	1.6	0.4	0.2	0.8	0.8		0.2	2.8
2	6.8	1.8	0.5	4.1	3.4	0.7	0.4	26.7
3	88.8	39.7	7.6	39.3	28.9	10.4	2.2	18.2
4	65.9	1.1	0.2	56.1	20.6	35.5	8.5	3.6
5	318.6	125.6	41.3	143.6	93.4	50.2	8.1	29.0
6	490.1	245.2	171.7	63.5	10.2	53.3	9.7	2.9
7	1,204.9	635.8	496.7	67.5	1.8	65.7	4.8	0.1
8	250.5	110.9	120.8	16.8	3.7	13.1	2.0	
9	158.2	72.0	11.1	72.2	62.5	9.8	2.8	11.4
10	133.5	58.8	38.9	32.7	9.2	23.5	3.1	1.3
US ²	2,718.8	1,291.2	889.1	496.6	234.4	262.2	41.9	95.8
	Hogs				Sheep			
	Total ²	Barrows & Gilts	Sows	Stags & Boars	Total ²	Mature Sheep	Lambs & Yearlings	
	<i>1,000 Head</i>	<i>1,000 Head</i>	<i>1,000 Head</i>	<i>1,000 Head</i>	<i>1,000 Head</i>	<i>1,000 Head</i>	<i>1,000 Head</i>	
1	2.1	2.1			2.4	0.4	2.0	
2	14.5	14.3	0.1	0.1	12.5	1.8	10.7	
3	609.2	607.2	2.0		10.4	0.5	9.8	
4	1,354.0	1,271.8	81.2	1.0	2.4	1.1	1.3	
5	2,271.2	2,177.5	90.9	2.8	30.7	4.8	25.9	
6	448.0	418.2	28.1	1.7	26.9	2.2	24.7	
7	3,236.1	3,173.2	48.0	15.0	40.3	0.1	40.2	
8	349.5	340.5	9.1		97.3	1.7	95.6	
9	219.7	219.6	0.1		37.7	0.5	37.2	
10	29.6	29.4	0.2		1.8	0.4	1.4	
US ²	8,534.1	8,253.8	259.6	20.7	262.3	13.5	248.8	

¹ States included in regions are as follows: 1- CT, ME, NH, VT, MA, & RI; 2- NY & NJ; 3- DE-MD, PA, WV, & VA; 4- AL, FL, GA, KY, MS, NC, SC, & TN; 5- IL, IN, MI, MN, OH, & WI; 6- AR, LA, NM, OK, & TX; 7- IA, KS, MO, & NE; 8- CO, MT, ND, SD, UT, & WY; 9- AZ, CA, HI & NV; 10- AK, ID, OR, & WA.

² Totals may not add due to rounding.

**Federally Inspected Slaughter: By Region and United States,
January - December 2002 * ¹**

Standard Federal Regions	Cattle							Calves
	Total ²	Steers	Heifers	Cows			Bulls & Stags	Total
				All	Dairy	Other		
	<i>1,000 Head</i>	<i>1,000 Head</i>	<i>1,000 Head</i>	<i>1,000 Head</i>	<i>1,000 Head</i>	<i>1,000 Head</i>	<i>1,000 Head</i>	<i>1,000 Head</i>
1	17.7	3.7	1.9	10.0	9.6	0.4	2.1	27.0
2	76.9	18.5	5.0	48.1	39.4	8.7	5.3	285.0
3	1,078.9	511.0	96.9	439.9	323.4	116.4	31.2	192.0
4	814.2	12.8	3.3	676.1	252.8	423.3	122.0	27.8
5	3,786.3	1,611.2	521.7	1,543.9	1,005.4	538.5	109.5	342.7
6	6,467.9	3,311.4	2,270.0	759.3	120.1	639.2	127.3	17.3
7	15,929.1	8,731.4	6,299.1	820.5	23.8	796.7	78.1	0.6
8	3,401.2	1,591.4	1,586.6	193.9	44.8	149.1	29.3	0.1
9	1,872.0	918.9	111.5	804.7	661.0	143.7	36.9	117.1
10	1,676.0	812.3	445.9	361.6	126.7	234.9	56.1	9.7
US ²	35,120.2	17,522.5	11,342.0	5,657.8	2,606.9	3,050.9	597.9	1,019.2
	Hogs				Sheep			
	Total ²	Barrows & Gilts	Sows	Stags & Boars	Total ²	Mature Sheep	Lambs & Yearlings	
	<i>1,000 Head</i>	<i>1,000 Head</i>	<i>1,000 Head</i>	<i>1,000 Head</i>	<i>1,000 Head</i>	<i>1,000 Head</i>	<i>1,000 Head</i>	
1	21.7	21.3	0.3	0.1	24.5	5.0	19.5	
2	139.6	137.0	2.1	0.5	138.1	18.2	119.9	
3	6,762.5	6,741.9	20.2	0.3	112.3	7.8	104.5	
4	15,524.7	14,584.7	922.1	17.9	26.1	11.6	14.5	
5	26,271.8	25,037.1	1,204.1	30.5	415.8	43.9	371.9	
6	5,017.8	4,733.6	277.6	6.6	303.4	28.4	275.1	
7	37,918.5	37,126.5	578.1	213.9	477.4	1.0	476.4	
8	4,512.5	4,335.4	177.0	0.1	1,188.0	21.3	1,166.7	
9	2,377.1	2,375.3	1.0	0.8	386.0	7.1	378.9	
10	368.6	365.8	2.5	0.4	20.7	3.7	17.0	
US ²	98,914.7	95,458.7	3,184.9	271.1	3,092.3	148.0	2,944.2	

* Accumulated totals based on unrounded data.

¹ States included in regions are as follows: 1- CT, ME, NH, VT, MA, & RI; 2- NY & NJ; 3- DE-MD, PA, WV, & VA; 4- AL, FL, GA, KY, MS, NC, SC, & TN; 5- IL, IN, MI, MN, OH, & WI; 6- AR, LA, NM, OK, & TX; 7- IA, KS, MO, & NE; 8- CO, MT, ND, SD, UT, & WY; 9- AZ, CA, HI & NV; 10- AK, ID, OR, & WA.

² Totals may not add due to rounding.

**Federally Inspected Slaughter: By State and United States,
December 2002**

State	Cattle							Calves
	Total ¹	Steers	Heifers	Cows			Bulls & Stags	Total
				All	Dairy	Other		
	<i>1,000 Head</i>	<i>1,000 Head</i>	<i>1,000 Head</i>	<i>1,000 Head</i>	<i>1,000 Head</i>	<i>1,000 Head</i>	<i>1,000 Head</i>	<i>1,000 Head</i>
AL								
AK								
AZ	46.6	32.8	1.3	12.6	12.6			
AR	0.7	0.2	0.1	0.3		0.3	0.1	
CA	110.6	38.9	9.7	59.3	49.9	9.4	2.8	11.4
CO	186.8	91.7	94.4	0.6	0.5	0.1	0.1	
DE-MD	3.1	2.0	0.7	0.3	0.3			0.1
FL	8.4	0.2		7.7	1.3	6.4	0.5	
GA	26.0	0.1		22.4	0.4	22.0	3.6	
HI	0.8	0.2	0.2	0.3		0.3	0.1	
ID	65.8	25.7	14.2	23.4	5.5	17.9	2.4	
IL	68.3	38.2	30.0					9.0
IN	0.4	0.2	0.1					0.8
IA	51.1	26.1	24.9				0.1	
KS	557.8	309.5	248.0	0.3		0.3		
KY	0.6	0.5	0.1					
LA								
MI	35.7	23.4	2.4	9.8	9.8		0.1	1.7
MN	68.9	8.3	4.8	49.9	20.7	29.2	5.9	
MS								
MO	5.2	1.1	0.5	3.2	0.6	2.6	0.4	
MT	0.5	0.2	0.2	0.1		0.1	0.1	
NE	590.7	299.1	223.3	64.0	1.2	62.8	4.3	
NV	0.1	0.1						
N ENG ²	1.6	0.4	0.2	0.8	0.8		0.2	2.8
NJ	2.5	1.1	0.2	0.9	0.8	0.1	0.2	10.9
NM	1.3			1.3	1.3			
NY	4.3	0.6	0.3	3.1	2.5	0.6	0.2	15.8
NC	17.7	0.1		14.4	7.6	6.8	3.2	0.1
ND	0.3	0.2	0.1	0.1		0.1		
OH	5.8	0.4	0.2	5.1	4.5	0.6	0.1	
OK								
OR	0.9	0.5	0.2	0.1	0.1		0.1	
PA	85.5	37.6	6.8	38.9	28.6	10.3	2.1	18.0
SC								
SD	14.8	0.1	0.1	13.0	2.3	10.7	1.6	
TN	0.8	0.2		0.4	0.2	0.2	0.1	
TX	487.3	244.9	171.6	61.2	8.6	52.6	9.6	2.9
UT	48.1	18.8	26.0	3.0	0.8	2.2	0.3	
VA	0.1	0.1						
WA	66.7	32.6	24.5	9.2	3.6	5.6	0.5	
WV	0.1							
WI	139.6	55.0	3.7	78.8	58.4	20.4	2.0	13.1
WY								
US ³	2,718.8	1,291.2	889.1	496.6	234.4	262.2	41.9	95.8

¹ Totals may not add due to rounding.

² N ENG includes CT, ME, MA, NH, RI, and VT.

³ States with no data printed are still included in the US total. Data not printed to avoid disclosing individual operations.

**Federally Inspected Slaughter: By State and United States,
December 2002**

State	Hogs				Sheep		
	Total ¹	Barrows & Gilts	Sows	Stags & Boars	Total ¹	Mature Sheep	Lambs & Yearlings
	<i>1,000 Head</i>	<i>1,000 Head</i>	<i>1,000 Head</i>	<i>1,000 Head</i>	<i>1,000 Head</i>	<i>1,000 Head</i>	<i>1,000 Head</i>
AL	8.3		7.3	1.0			
AK							
AZ							
AR							
CA	216.5	216.4	0.1				
CO	0.7	0.6	0.1		93.7		93.6
DE-MD	1.8	1.8			3.0		2.9
FL	9.1	9.0	0.1		0.3		0.2
GA	6.7	6.7					
HI	3.1	3.1					
ID					0.2		0.1
IL	776.2	727.3	47.0	1.9	10.4		10.3
IN	591.0	591.0			3.4	2.4	1.0
IA	2,430.0	2,374.5	40.6	15.0	39.7		39.6
KS	23.8	16.4	7.4				
KY	195.0	188.6	6.5		0.9	0.8	0.1
LA							
MI	8.8	3.3	5.5		16.7	2.3	14.4
MN	772.2	772.1			0.2		0.1
MS							
MO	173.2	173.2			0.6		0.6
MT	0.2	0.1			0.1		0.1
NE	609.1	609.1					
NV					0.1		
N ENG ²	2.1	2.1			2.4	0.4	2.0
NJ	11.4	11.2	0.1	0.1	10.0	1.1	8.9
NM					0.9	0.7	0.2
NY	3.1	3.1			2.5	0.7	1.7
NC	882.4	877.3	5.1				
ND	13.2	13.2					
OH	96.5	83.8	12.1	0.7			
OK	397.9	392.5	5.4				
OR	15.7	15.5	0.1		0.9	0.1	0.8
PA	258.3	258.0	0.3		7.2	0.5	6.7
SC							
SD	332.0	323.0	9.0		1.1		1.1
TN	61.8	1.0	60.8		0.5		0.5
TX	34.0	24.0	8.2	1.7	25.9	1.5	24.4
UT	3.5	3.5			2.4	1.7	0.7
VA	349.0	347.3	1.7		0.2		0.2
WA	1.6	1.5					
WV	0.1	0.1					
WI	26.6	0.1	26.3	0.3	0.1		0.1
WY							
US ³	8,534.1	8,253.8	259.6	20.7	262.3	13.5	248.8

¹ Totals may not add due to rounding.

² N ENG includes CT, ME, MA, NH, RI, and VT.

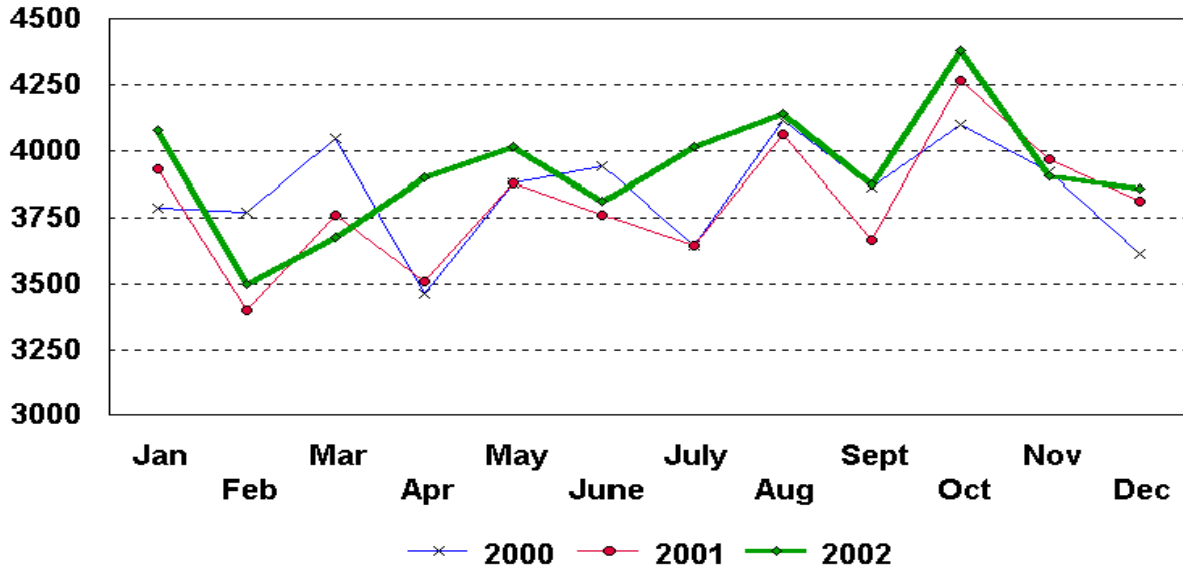
³ States with no data printed are still included in the US total. Data not printed to avoid disclosing individual operations.

Federally Inspected Slaughter: Percent of Total Commercial Slaughter by Species, United States

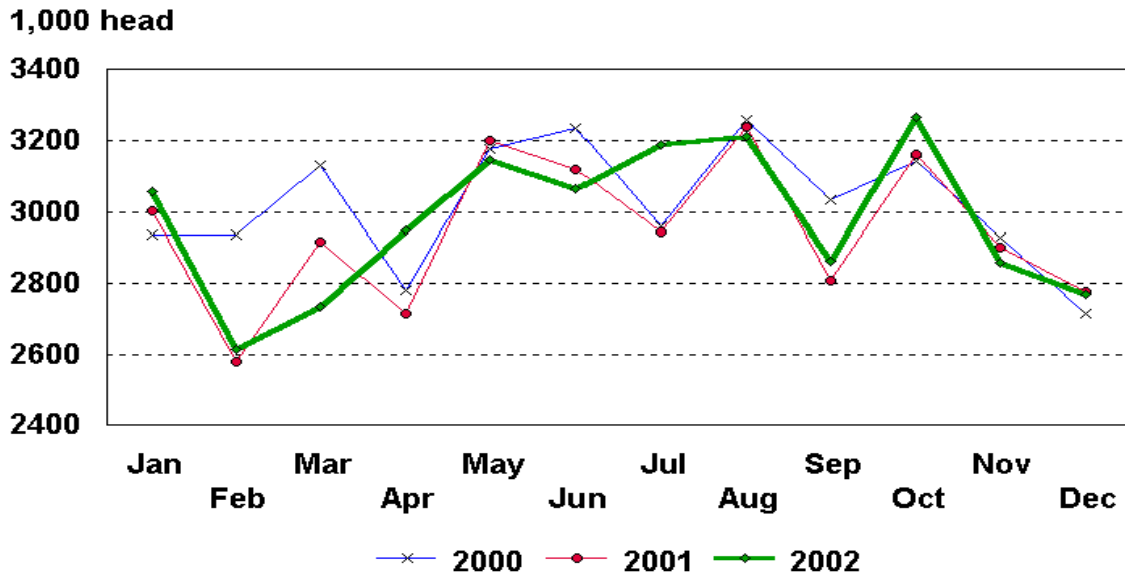
Species	Dec 2001	Nov 2002	Dec 2002	Jan - Dec	
	2001	2002	2002	2001	2002
	<i>Percent</i>	<i>Percent</i>	<i>Percent</i>	<i>Percent</i>	<i>Percent</i>
Cattle	98.1	98.3	98.1	98.3	98.3
Calves	97.1	97.1	97.5	97.4	97.6
Hogs	98.6	98.8	98.6	98.5	98.7
Sheep	95.2	94.1	94.2	95.1	94.4

U.S. Monthly Commercial Red Meat Production

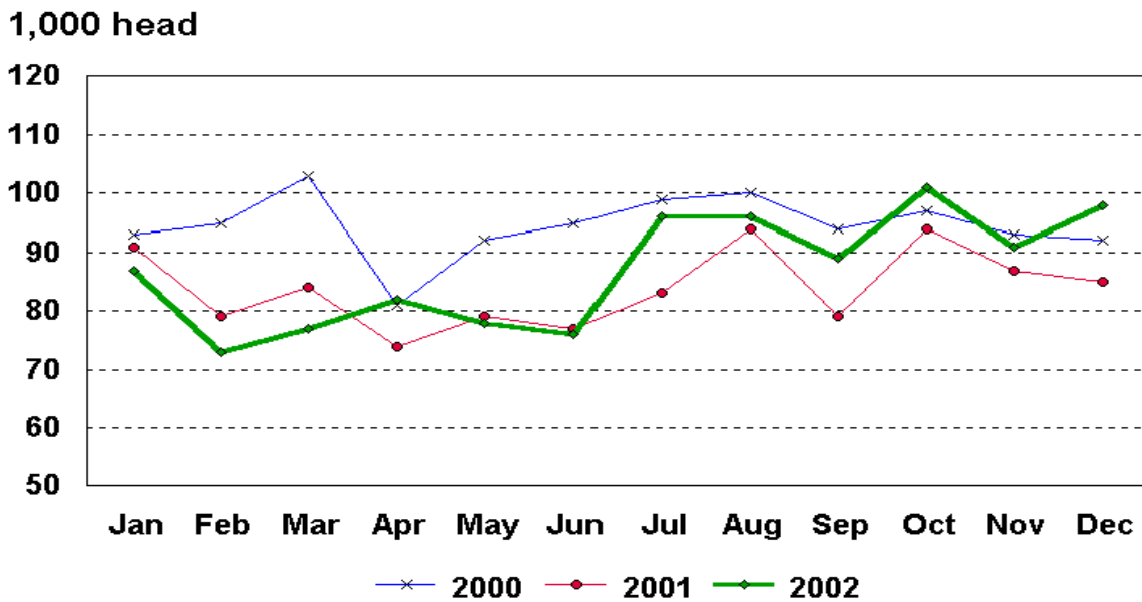
Million Pounds



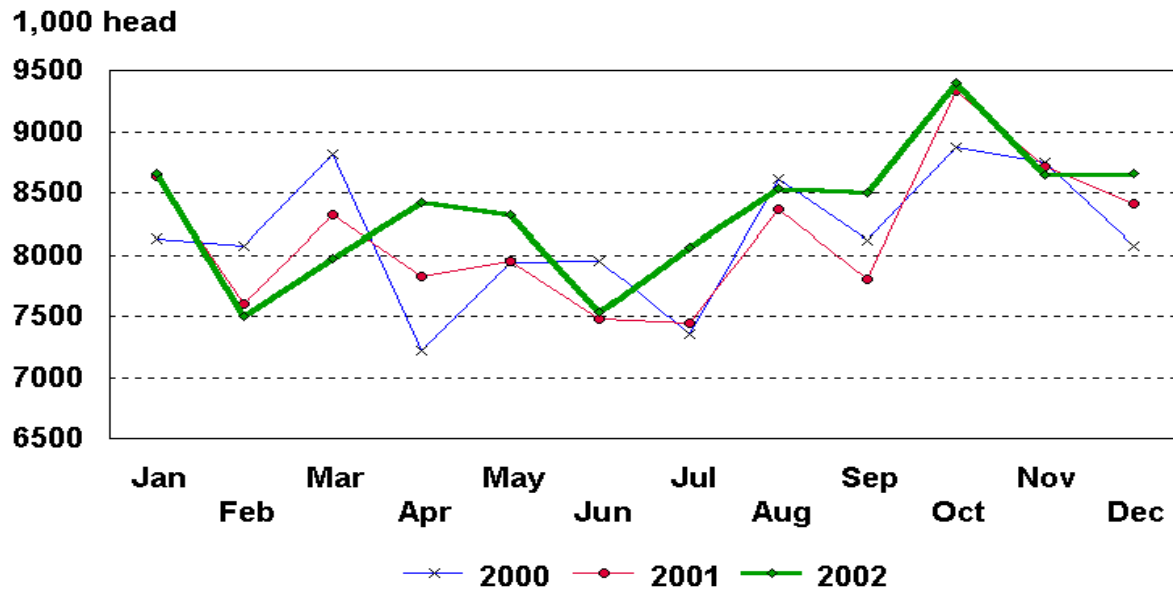
U.S. Monthly Commercial Slaughter Cattle



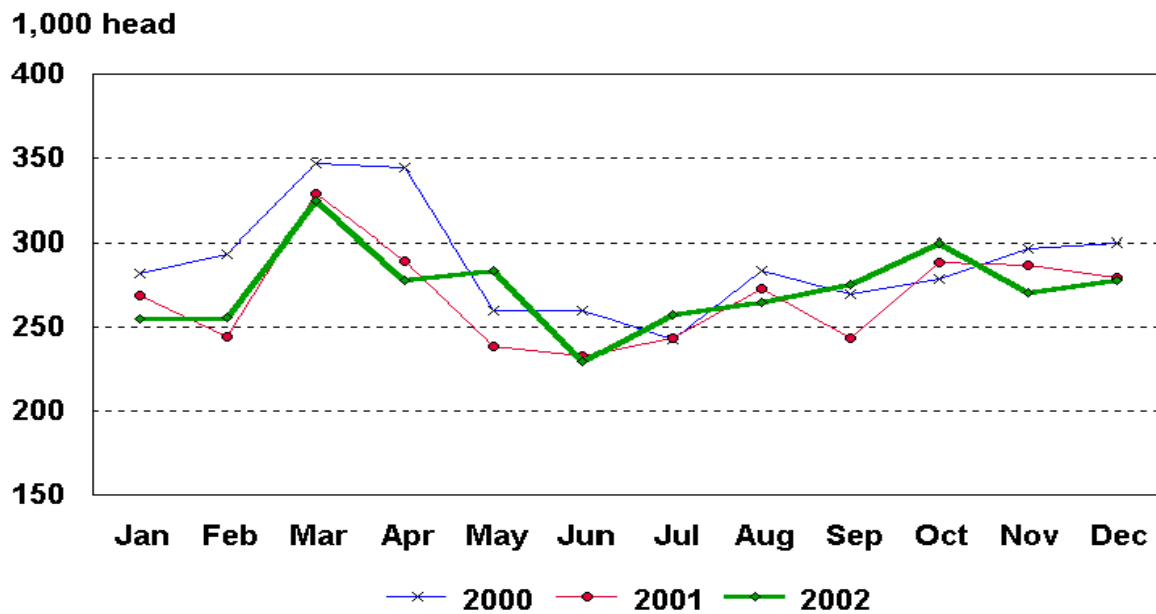
U.S. Monthly Commercial Slaughter Calves



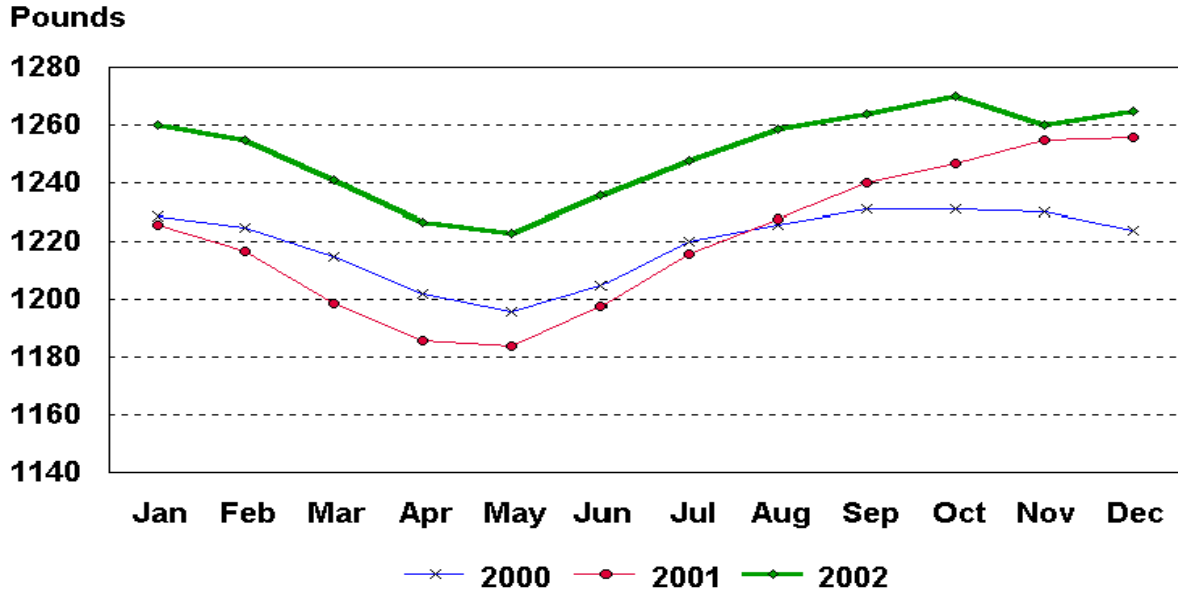
U.S. Monthly Commercial Slaughter Hogs



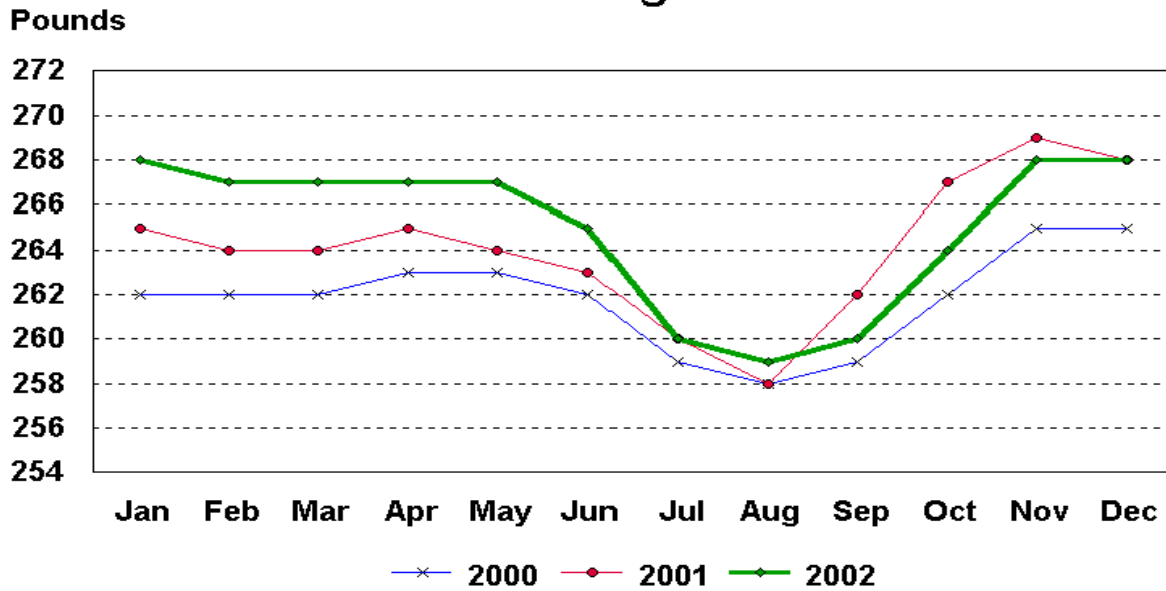
U.S. Monthly Commercial Slaughter Sheep



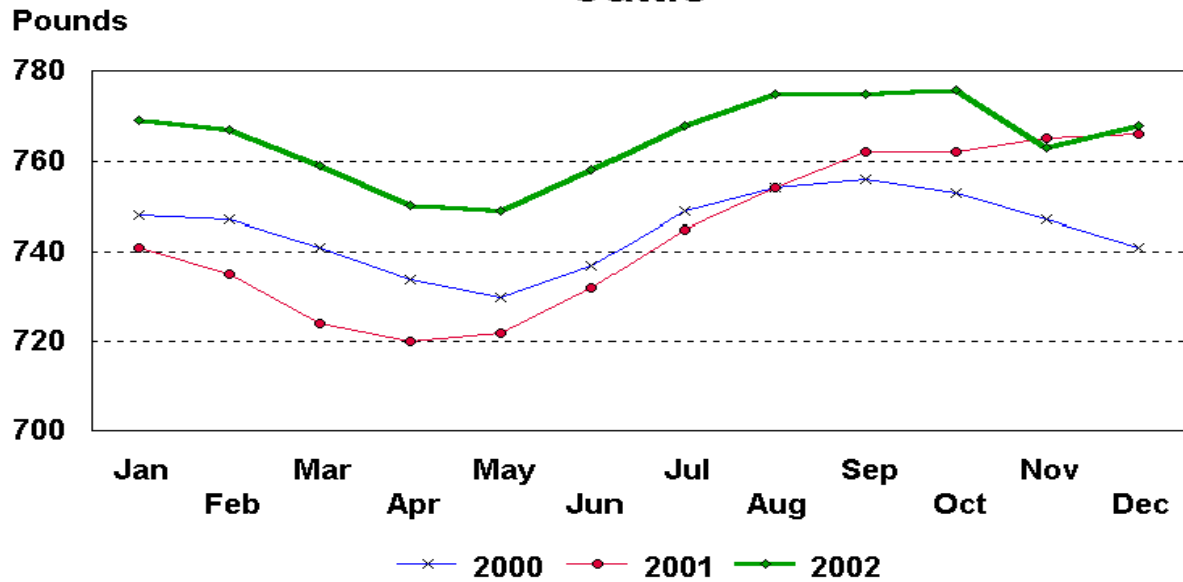
U.S. Monthly Commercial Slaughter Average Live Weight Cattle



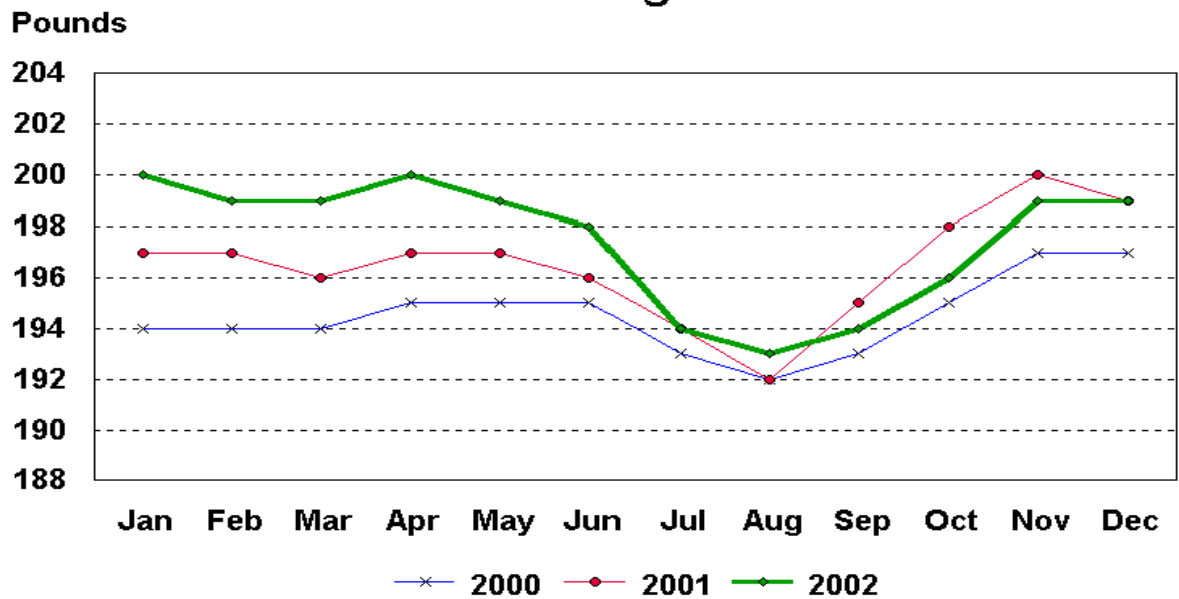
U.S. Monthly Commercial Slaughter Average Live Weight Hogs



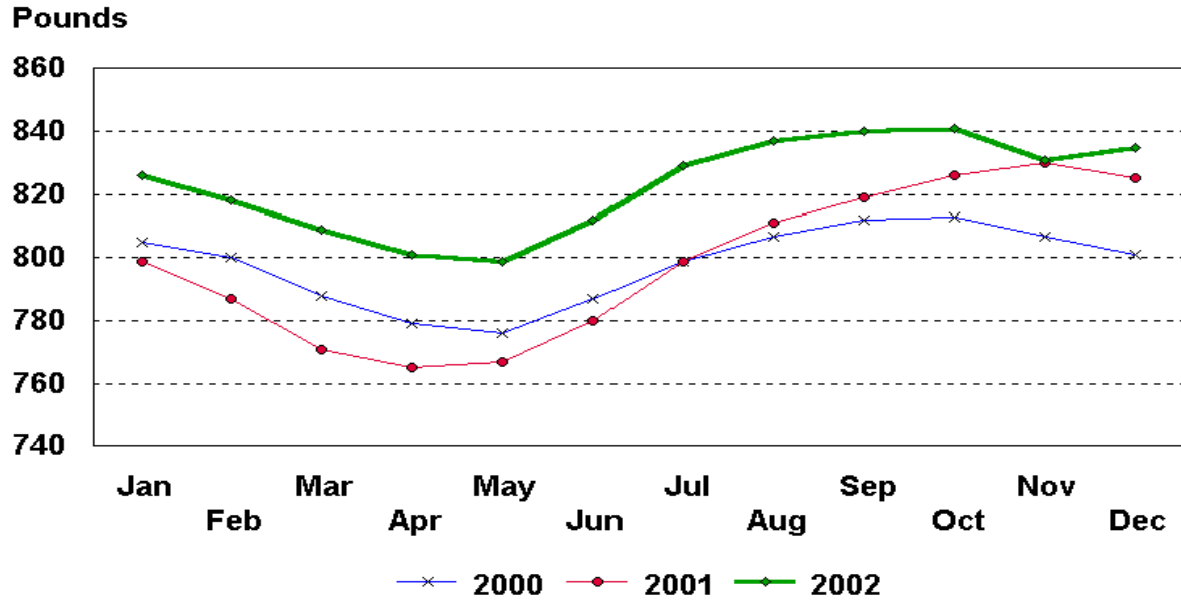
U.S. Monthly Federally Inspected Average Dressed Weight Cattle



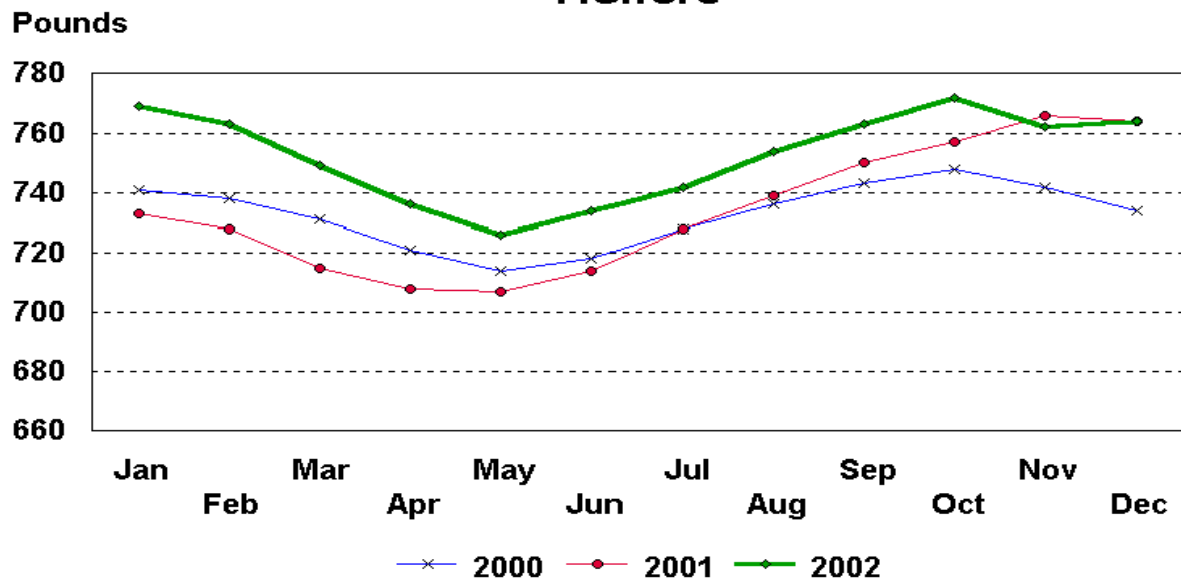
U.S. Monthly Federally Inspected Average Dressed Weight Hogs



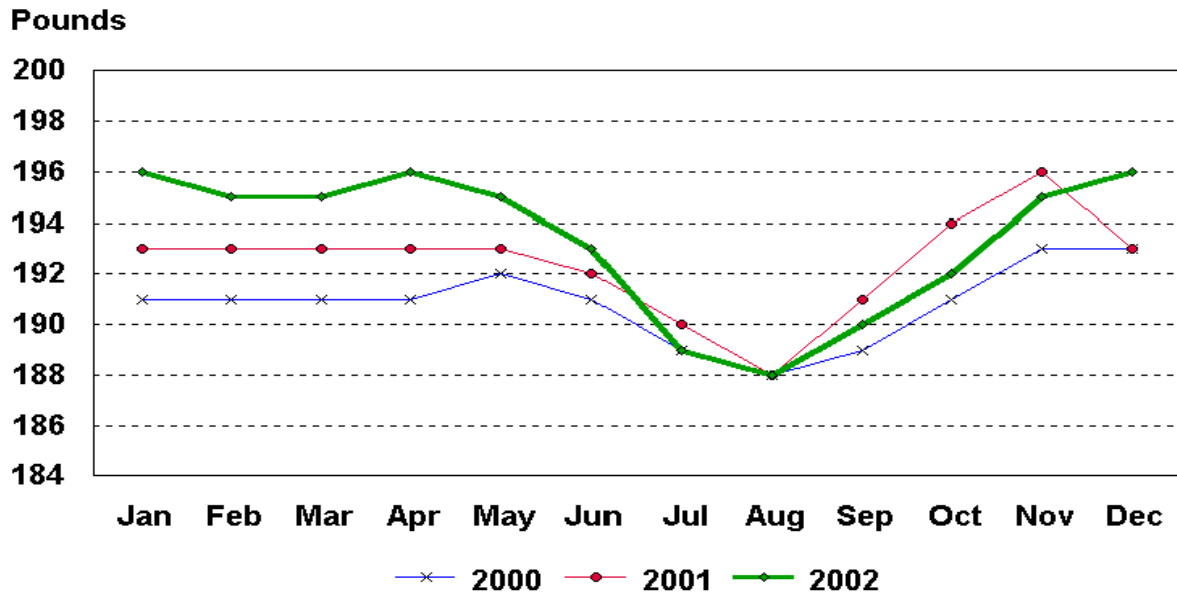
U.S. Monthly Federally Inspected Average Dressed Weight Steers



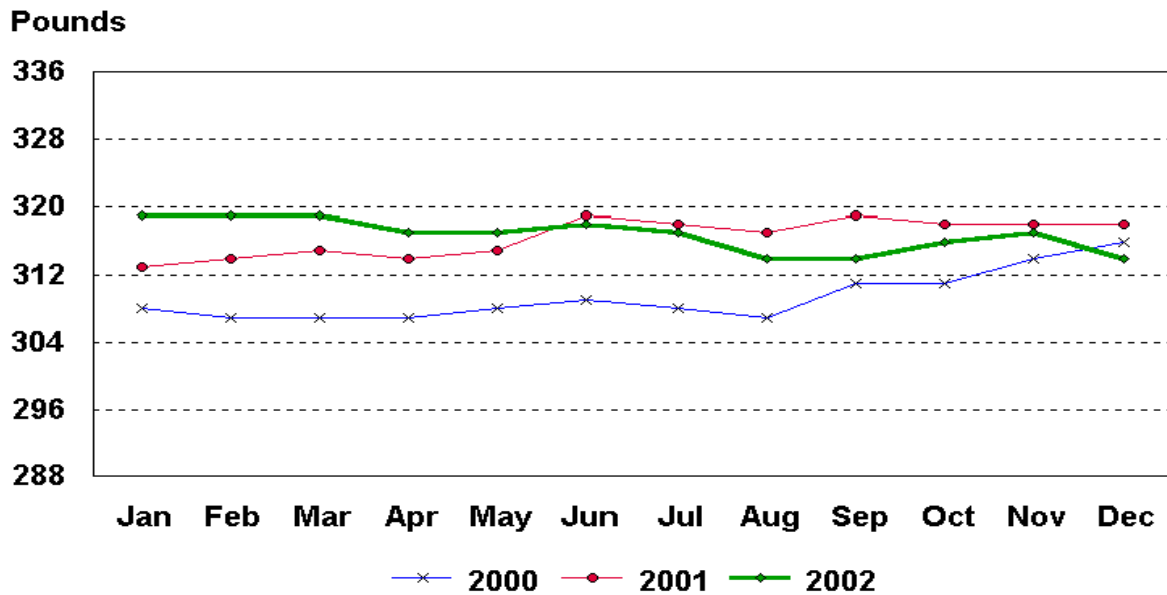
U.S. Monthly Federally Inspected Average Dressed Weight Heifers



U.S. Monthly Federally Inspected Average Dressed Weight Barrows and Gilts



U.S. Monthly Federally Inspected Average Dressed Weight Sows



Livestock Slaughter Estimates

Data Sources: Primary data for the commercial livestock slaughter estimates are obtained from the **Weekly Livestock Slaughter Report** (LS-149) questionnaires completed by inspectors from the Food Safety and Inspection Service (FSIS), USDA, which provide actual counts of animals slaughtered in Federally Inspected (FI) plants. These counts are combined with data from State-administered Non-Federally Inspected (NFI) slaughter plants to derive total commercial slaughter estimates. Over 95 percent of the total U.S. slaughter for any species is under FI. The LS-149 forms collect number of head slaughtered daily under FI by species and class as well as head kill after condemnation and total live and dressed weights.

Slightly under 900 plants in the U.S. are operated under Federal Inspection and over 2,300 plants under State inspection. Slaughter from State-inspected Talmedge-Aiken plants is included in FI totals (see Types of Plants, page 98). To prevent duplication in reporting between NFI and FI plants and assure all FI plants are included, certificates prepared by FSIS identifying operating status are constantly monitored.

Revision Policy: Revisions are generally the result of late or corrected data and are less than one-half of 1 percent. Revisions for the previous month and the year-to-date totals are noted in each monthly release by an (*) or a footnote. Final data are published in the annual summary.

Procedures and Reliability: Individual inspectors may be contacted by telephone if the **Weekly Livestock Slaughter Report** questionnaire is not received by NASS in time for summarization. This assures that all plants slaughtering a large number of head or several species are accounted for each week.

All head kill data are tabulated on a weekly basis approximately two weeks after the kill week. A computer edit compares each plant's data with the historical data for that plant. The edit provides a missing reports listing for follow-up telephone contact and imputes missing weight data. In addition, data are checked for unusual values for species, class, head kill, and pattern of kill generally, based on each plant's past operating profile.

Usually, if no form is received by mail, data for plants slaughtering fewer than 50 total head weekly of only one species are imputed. Imputation of live and dressed weight data may also be necessary on partially completed forms for any plant. The imputation is also based on the data history of each respective plant and represents the recent operating characteristics until final data are tabulated. Imputed head kill for missing plants usually is less than 1 percent of the U.S. head kill totals. Imputation for live and dressed weight data for cattle is about 10 percent and for hogs about 3 percent. The imputation for calves and sheep is more frequent and variable.

Head kill for FI slaughter before condemnation is for the actual days of the survey month, while head kill after condemnation and live and dressed weight data are for full weeks only. Average live and dressed weight and dressing percentages by State are compared with the

previous week as an additional check. Fluctuations are frequently the result of plants permanently or temporarily closing and a shift in the kind of animal reported.

FI data are summarized weekly and accumulated to a monthly total for this release, while NFI data are summarized monthly only. These weekly totals are published by USDA's Agricultural Marketing Service (AMS) in **Livestock, Meat, Wool Market News**, Weekly Summary, and Statistics.

Livestock slaughter estimates are based on a census of operating plants, and, therefore, have no sampling error. However, they may be subject to errors such as omissions, duplications and mistakes in reporting, recording and processing the data. These errors are minimized through rigid quality controls in the edit and summarization process, and a careful review of all reported data for consistency and reasonableness.

Generally, no data are published if less than three plants operate for a species in a State or if one plant has 60 percent or more of the total commercial slaughter for a species. These data are included in U.S. totals. A review of the reported data is made annually.

Types of Plants

There are generally **four types** of slaughtering plants.

- (1) **Federally Inspected (FI) Plants:** Plants that transport meat interstate must employ federal inspectors to assure compliance with USDA standards. Any State whose commercial plants operate entirely under federal inspection may still have custom-exempt establishments for which NFI estimates are made.
- (2) **Talmedge-Aiken (TA) Plants:** Slaughter plants in which USDA is responsible for inspection. However, federal inspection is carried out by State employees. These plants are considered to be federally inspected.
- (3) **Non-Federally Inspected (NFI) Plants:** Plants which sell and transport only intrastate. State inspectors assure compliance with individual State standards for these NFI plants. Mobile slaughtering units are excluded and are considered farm slaughter.
- (4) **Custom-Exempt Plants:** Plants that do not sell meat but operate on a custom basis only are custom-exempt. The animals and meat are not inspected, but the facilities must meet health standards. These are considered NFI plants and head kill is included in NFI totals.

Terms and Definitions

Commercial Production: Includes slaughter and meat production in federally inspected and other plants, but excludes animals slaughtered on farms.

Dressed Weight: The weight of a chilled animal carcass. Beef with kidney knob in; veal with hide off; lamb and mutton with pluck out; pork with leaf fat and kidneys out, jowls on and head off.

Dressing Percent: Is usually expressed as a percentage yield of chilled carcass in relation to the weight of the live animal on hoof. For example, a live hog that weighed 200 pounds on hoof and yielded a carcass weighing 140 pounds would have a dressing percentage of 70.

Food and Meat Inspection: Includes examination, checking, or testing of a carcass and/or meat against established government standards and involves checking the facility for cleanliness, health of animals, or parts of animals and quality of the meat produced.

Live Weight: The gross weight of a live animal when received at the slaughter plant.

Plant, Slaughter: An establishment where animals are killed and butchered.

Red Meat: Red meat production is the carcass weight after slaughter including beef, veal, pork, and lamb and mutton. It is derived using the number of head times average dressed weight for FI and NFI separately. FI head kill must be adjusted for condemnations using the factor derived from the FSIS inspection reports.

The FI meat production formula is $(\text{FI head kill}) \times (1 - \text{condemnation factor}) \times (\text{average dressed weight}) = \text{FI red meat production}$. The condemnation factor is the number of animals condemned as a percentage of the total kill. It has been fairly stable for the last five years; running about 1.90 head per 100 head for calves, .5 per 100 for cattle, .40 per 100 for hogs and .20 per 100 for sheep. The NFI meat production formula is $(\text{NFI head kill}) \times (\text{live weight}) \times (\text{FI dressing percentage}) = \text{NFI red meat production}$.

Slaughter: Killing and butchering of animals primarily for food.

Slaughter, Farm: Animals slaughtered on farms primarily for home consumption. Excludes custom slaughter for farmers at commercial establishments, but includes mobile slaughtering on farms. These estimates appear only in the annual slaughter release.

Wholesome Meat Act: Legislation that specifies that all meat produced for sale in the U.S. must be inspected; and further, meat that is transported interstate must be inspected in compliance with federal (USDA) standards.

Index

	Page
Commercial Calf Slaughter, Number, Total, and Average Live weight, by State and U.S.	6
Commercial Cattle Slaughter, Number, Total, and Average Live weight, by State and U.S.	5
Commercial Hog Slaughter, Number, Total and Average Live weight, by State and U.S.	7
Commercial Red Meat Production, by State and U.S.	4
Commercial Sheep and Lamb Slaughter, Number, Total, and Average Live weight, by State and U.S.	8
Data Sources, Revision Policy, and Procedures and Reliability	21
Federally Inspected Classification of Number and Average Dressed Weight, by Species and Class and U.S.	9
Federally Inspected Number by Species and Class, by Regions and U.S.	10
Federally Inspected Number by Species and Class, by State and U.S.	12
Federally Inspected Percent of Total Commercial, by Species, U.S.	14
Livestock Slaughter, Number and Average Weights, by Species and Type of Slaughter, U.S.	3
Red Meat Production, Commercial and FI, by Class, U.S	2
Terms and Definitions	23
Types of Plants	22

The next "Livestock Slaughter" report will be released at 8:30 a.m. on February 21, 2003.

The United States Department of Agriculture (USDA) prohibits discrimination in all its programs on the basis of race, color, national origin, gender, religion, age, disability, political beliefs, sexual orientation, and marital or family status. (Not all prohibited bases apply to all programs.) Persons with disabilities who require alternative means for communication of program information (braille, large print, audiotape, etc.) should contact the USDA's TARGET Center at 202-720-2600 (voice and TDD).

To file a complaint of discrimination, write USDA, Director, Office of Civil Rights, Room 326-W, Whitten Building, 1400 Independence Avenue, SW, Washington, D.C., 20250-9410, or call 202-720-5964 (voice or TDD). USDA is an equal opportunity provider and employer.

ACCESS TO REPORTS!!

For your convenience, there are several ways to obtain NASS reports, data products, and services:

INTERNET ACCESS

All NASS reports are available free of charge on the worldwide Internet. For access, connect to the Internet and go to the NASS Home Page at: <http://www.usda.gov/nass/>. Select "Today's Reports" or Publications and then Reports Calendar or Publications and then Search, by Title or Subject.

E-MAIL SUBSCRIPTION

All NASS reports are available by subscription free of charge direct to your e-mail address. Starting with the NASS Home Page at <http://www.usda.gov/nass/>, click on **Publications**, then click on the **Subscribe by E-mail** button which takes you to the page describing e-mail delivery of reports. Finally, click on **Go to the Subscription Page** and follow the instructions.

AUTOFAX ACCESS

NASSFax service is available for some reports from your fax machine. Please call 202-720-2000, using the handset attached to your fax. Respond to the voice prompts. Document 0411 is a list of available reports.

PRINTED REPORTS OR DATA PRODUCTS

CALL OUR TOLL-FREE ORDER DESK: 800-999-6779 (U.S. and Canada)
Other areas, please call 703-605-6220 FAX: 703-605-6900
(Visa, MasterCard, check, or money order acceptable for payment.)

ASSISTANCE

For **assistance** with general agricultural statistics or further information about NASS or its products or services, contact the **Agricultural Statistics Hotline** at **800-727-9540**, 7:30 a.m. to 4:00 p.m. ET, or e-mail: nass@nass.usda.gov.

Competing in the 21st Century

Agricultural Outlook Forum 2003



February 20-21, 2003

Crystal Gateway

Marriott Hotel

Arlington, Virginia

- ◆ 2003 Commodity Prospects
- ◆ Emerging Export Competitors
- ◆ Farming under New Programs
- ◆ Coping with Regulations
- ◆ Shifting consumer Preferences
- ◆ Ensuring Food Safety
- ◆ Impact of El Nino

Sharpen your strategic focus at USDA's 79th annual Agricultural Outlook Forum. Note experts, industry leaders and producers will discuss many facets of competing in domestic and world markets.

The program will examine growing competition from Central and Eastern Europe, Brazil and Asia, as well as progress in WTO negotiations.

Focus sessions will highlight many challenges producers face in the competitive arena, ranging from the growing complexity and cost of regulation, to dealing with food safety and changing eating habits.

As always, leading analysts will be on hand to debate planting, trade and price prospects for farm commodities for the year ahead. Attendees will receive new 10-year commodity projections from USDA.

Networking opportunities abound at the Forum, which attracted 1,400 attendees last February. Register now for the best value. See full details at www.usda.gov/oce.

www.usda.gov/oce agforum@oce.usda.gov (877) 891-2208 toll free