



Livestock Slaughter

Released March 21, 2003, by the National Agricultural Statistics Service (NASS), Agricultural Statistics Board, U.S. Department of Agriculture. For information on "Livestock Slaughter" call Liana Cuffman at (515) 284-4340, office hours 8:00 a.m. to 4:30 p.m. CT.

Total Red Meat Production Drops From January

Commercial red meat production for the United States totaled 3.50 billion pounds in February, virtually unchanged from the 3.50 billion pounds produced in February 2002.

February 2002 contained 20 weekdays (including one holiday) and 4 Saturdays.
February 2003 contained 20 weekdays (including one holiday) and 4 Saturdays.

Beef production, at 1.94 billion pounds, was 2 percent below the previous year. Cattle slaughter totaled 2.57 million head, down 2 percent from February 2002. The average live weight was 1,261 pounds, up 6 pounds from February a year ago.

Veal production totaled 15.8 million pounds, 10 percent above February a year ago. Calf slaughter totaled 83,100 head, up 14 percent from February 2002. The average live weight was 316 pounds, down 10 pounds from February a year ago.

Pork production totaled 1.52 billion pounds, up 3 percent from the previous year. Hog kill totaled 7.68 million head, 2 percent above February 2002. The average live weight was 267 pounds, unchanged from February a year ago.

Lamb and mutton production, at 15.0 million pounds, was down 16 percent from February 2002. Sheep slaughter totaled 224,200 head, 14 percent below last year. The average live weight was 133 pounds, down 4 pounds from February a year ago.

January - February red meat production was 7.57 billion pounds, virtually unchanged from 2002. Accumulated beef production was down 2 percent from last year, veal was up 8 percent, pork was up 2 percent, and lamb and mutton production was down 13 percent.

Commercial Red Meat Production: United States ¹

Class	Feb 2002	Jan 2003	Feb 2003	Feb 03 % of		Jan - Feb ²		
				Feb 2002	Jan 2003	2002	2003	03 as % of 02
	<i>Million Pounds</i>	<i>Million Pounds</i>	<i>Million Pounds</i>	<i>Percent</i>	<i>Percent</i>	<i>Million Pounds</i>	<i>Million Pounds</i>	<i>Percent</i>
Beef	1,987	2,292	1,944	98	85	4,319	4,237	98
Veal	14.3	*17.8	15.8	110	89	31.3	33.7	108
Pork	1,482	1,749	1,521	103	87	3,199	3,271	102
Lamb & Mutton	17.8	15.9	15.0	84	94	35.5	30.9	87
Total Red Meat	3,502	4,076	3,497	100	86	7,585	7,572	100

* Revised.

¹ Based on packers' dressed weights and excludes farm slaughter.

² Accumulated totals and percentages based on unrounded data.

Federally Inspected Red Meat Production: United States ¹

Class	Feb 2002	Jan 2003	Feb 2003	Feb 03 % of		Jan - Feb ²		
				Feb 2002	Jan 2003	2002	2003	03 as % of 02
	<i>Million Pounds</i>	<i>Million Pounds</i>	<i>Million Pounds</i>	<i>Percent</i>	<i>Percent</i>	<i>Million Pounds</i>	<i>Million Pounds</i>	<i>Percent</i>
Beef	1,956	2,258	1,913	98	85	4,252	4,171	98
Veal	13.9	17.3	15.4	111	89	30.3	32.7	108
Pork	1,465	1,731	1,504	103	87	3,163	3,235	102
Lamb & Mutton	17.0	15.4	14.3	84	93	34.1	29.7	87
Total Red Meat	3,452	4,022	3,447	100	86	7,479	7,469	100

¹ Based on packers' dressed weights and excludes farm slaughter.

² Accumulated totals and percentages based on unrounded data.

Livestock Slaughter: Number and Average Weights, United States ¹

Species	Unit	Feb 2002	Jan 2003	Feb 2003	Feb 03 % of		Jan - Feb ²		03 % of 02
					Feb 2002	Jan 2003	2002	2003	
					<i>Percent</i>	<i>Percent</i>			<i>Prcent</i>
Cattle No.									
Fed. Insp.	Thou	2,564.1	2,950.2	2,519.1	98	85	5,563.0	5,469.3	98
Other	Thou	51.4	56.7	50.7	99	89	109.6	107.4	98
Comm'l. ³	Thou	2,615.6	3,007.0	2,569.8	98	85	5,672.6	5,576.7	98
Live Wt/Hd									
Fed. Insp.	Lbs	1,259	1,272	1,264	100	99	1,261	1,268	101
Other	Lbs	1,090	1,089	1,092	100	100	1,090	1,091	100
Comm'l.	Lbs	1,255	1,268	1,261	100	99	1,258	1,265	101
Calves No.									
Fed. Insp.	Thou	71.2	*91.5	81.3	114	89	156.9	172.8	110
Other	Thou	2.0	2.2	1.9	94	85	4.0	4.0	101
Comm'l. ³	Thou	73.2	*93.7	83.1	114	89	160.9	176.8	110
Live Wt/Hd									
Fed. Insp.	Lbs	324	313	315	97	101	323	316	98
Other	Lbs	396	420	417	105	99	406	419	103
Comm'l.	Lbs	326	*318	316	97	100	324	317	98
Hogs No.									
Fed. Insp.	Thou	7,399.7	8,681.8	7,579.9	102	87	15,951.4	16,261.8	102
Other	Thou	101.5	105.7	100.4	99	95	210.4	206.1	98
Comm'l. ³	Thou	7,501.2	8,787.5	7,680.3	102	87	16,161.9	16,467.8	102
Live Wt/Hd									
Fed. Insp.	Lbs	267	268	267	100	100	268	268	100
Other	Lbs	237	234	237	100	101	236	236	100
Comm'l.	Lbs	267	268	267	100	100	267	267	100
Sheep&Lambs No.									
Fed. Insp.	Thou	244.3	227.2	211.0	86	93	488.2	438.1	90
Other	Thou	15.2	11.6	13.2	87	114	27.7	24.8	89
Comm'l. ³	Thou	259.4	238.8	224.2	86	94	515.9	463.0	90
Live Wt/Hd									
Fed. Insp.	Lbs	139	135	135	97	100	140	135	96
Other	Lbs	100	103	102	101	99	100	102	102
Comm'l.	Lbs	137	133	133	97	100	138	133	96

* Revised.

¹ Excludes slaughter on farms.

² Accumulated totals and percentages based on unrounded data.

³ Totals may not equal sum of the parts due to rounding.

Commercial Red Meat Production: By State and United States ¹

State	Feb 2002	Jan 2003	Feb 2003	Feb 03 as % of ²	
				Feb 2002	Jan 2003
	<i>Million Pounds</i>	<i>Million Pounds</i>	<i>Million Pounds</i>	<i>Percent</i>	<i>Percent</i>
AL	4.2	3.8	3.4	83	90
AK					
AZ	35.1	37.3	35.8	102	96
AR	4.4	6.0	3.9	89	66
CA	94.9	123.7	106.5	112	86
CO	174.7	174.7	155.3	89	89
DE-MD	2.9	3.0	2.5	87	83
FL	4.6	5.8	5.1	111	87
GA	21.6	23.8	19.2	89	81
HI	0.9	0.9	0.9	100	99
ID	44.4	55.5	45.8	103	83
IL	198.5	214.8	188.4	95	88
IN	110.3	121.9	109.9	100	90
IA	466.8	551.2	485.4	104	88
KS	448.4	498.3	429.1	96	86
KY	32.7	41.5	33.2	101	80
LA	1.5	1.3	1.4	96	107
MI	33.4	34.9	29.8	89	85
MN	171.6	207.4	180.5	105	87
MS	23.3	27.6	22.1	95	80
MO	33.3	39.4	33.0	99	84
MT	1.4	1.4	1.3	98	94
NE	557.5	646.3	538.5	97	83
NV	0.1	0.1	0.1	136	90
N ENG ³	1.2	1.7	1.3	104	76
NJ	4.7	5.2	4.2	88	81
NM	0.8	1.2	1.0	120	84
NY	3.0	3.7	3.3	109	87
NC	160.8	199.7	168.0	104	84
ND	3.0	3.2	2.7	88	83
OH	23.1	27.7	24.7	107	89
OK	69.6	85.4	72.8	105	85
OR	3.4	3.6	3.4	102	97
PA	93.2	110.3	94.0	101	85
SC	19.8	21.7	18.5	94	85
SD	68.4	89.9	76.4	112	85
TN	15.8	20.8	16.2	102	78
TX	320.4	398.2	335.5	105	84
UT	39.7	43.5	38.7	97	89
VA	58.8	65.8	59.0	100	90
WA	45.0	52.6	41.2	91	78
WV	0.5	0.8	0.4	91	59
WI	103.7	119.4	103.6	100	87
WY	0.4	0.7	0.5	105	69
US	3,502.1	4,075.5	3,496.5	100	86

¹ Includes total beef, veal, pork, lamb, and mutton.

² Percentages based on unrounded data.

³ N ENG includes CT, ME, MA, NH, RI, and VT.

**Commercial Cattle Slaughter: By State and United States,
February 2002 and 2003¹**

State	Number Slaughtered		Total Live Weight		Average Live Weight	
	2002	2003	2002	2003	2002	2003
	<i>1,000 Head</i>	<i>1,000 Head</i>	<i>1,000 Pounds</i>	<i>1,000 Pounds</i>	<i>Pounds</i>	<i>Pounds</i>
AL	0.6	0.6	522	511	879	828
AK						
AZ	45.3	45.8	59,360	61,296	1,309	1,340
AR	1.4	1.3	1,199	1,103	842	864
CA	90.2	102.8	116,816	131,465	1,295	1,279
CO	203.6	184.9	265,194	240,962	1,302	1,303
DE-MD	3.0	2.6	3,685	3,312	1,223	1,255
FL	6.9	7.1	7,456	7,970	1,078	1,118
GA	30.4	27.9	37,827	33,474	1,243	1,199
HI	0.9	0.9	889	966	1,014	1,026
ID	58.0	59.4	71,337	75,728	1,230	1,276
IL	69.2	68.2	86,948	86,349	1,257	1,267
IN	3.0	3.1	3,210	3,282	1,060	1,051
IA	54.0	53.1	69,700	68,433	1,290	1,288
KS	572.9	537.2	694,171	663,572	1,212	1,235
KY	1.5	1.4	1,228	1,282	844	890
LA	1.2	1.4	1,134	1,184	913	870
MI	35.8	33.1	50,751	46,115	1,417	1,394
MN	54.0	59.7	77,546	84,490	1,435	1,415
MS						
MO	7.9	7.9	9,926	10,018	1,250	1,272
MT	1.7	1.6	1,954	1,882	1,147	1,146
NE	561.5	539.6	737,814	711,282	1,314	1,318
NV	0.1	0.1	53	88	972	1,081
N ENG ²	1.5	1.5	1,585	1,593	1,092	1,083
NJ	2.1	2.1	2,351	2,475	1,140	1,184
NM	1.6	2.0	1,464	1,904	935	930
NY	3.6	4.0	4,044	4,340	1,122	1,091
NC	14.4	15.8	15,545	16,565	1,083	1,048
ND	1.3	1.1	1,439	1,278	1,144	1,137
OH	11.0	10.6	12,559	11,891	1,143	1,125
OK	3.3	2.3	3,284	2,233	992	967
OR	1.1	1.2	1,384	1,349	1,228	1,133
PA	75.2	79.2	96,689	101,701	1,286	1,284
SC						
SD						
TN	1.2	1.4	1,023	1,229	862	902
TX	429.1	446.1	502,416	525,729	1,171	1,178
UT	50.6	49.2	62,323	60,864	1,232	1,237
VA	1.4	1.1	1,308	1,122	950	1,046
WA	60.9	55.0	72,917	67,777	1,198	1,233
WV	0.7	0.6	635	591	923	947
WI	127.5	131.0	172,196	172,165	1,351	1,315
WY	0.6	0.6	710	691	1,175	1,223
US ³	2,615.6	2,569.8	3,282,512	3,240,026	1,255	1,261

¹ Includes slaughter under Federal inspection and other Commercial slaughter, excludes farm slaughter.

² N ENG includes CT, ME, MA, NH, RI, and VT.

³ States with no data printed are still included in the US total. Data not printed to avoid disclosing individual operations.

**Commercial Calf Slaughter: By State and United States,
February 2002 and 2003¹**

State	Number Slaughtered		Total Live Weight		Average Live Weight	
	2002	2003	2002	2003	2002	2003
	<i>1,000 Head</i>	<i>1,000 Head</i>	<i>1,000 Pounds</i>	<i>1,000 Pounds</i>	<i>Pounds</i>	<i>Pounds</i>
AL						
AK						
AZ						
AR						
CA	8.8	11.9	1,502	1,548	171	131
CO						
DE-MD	0.1	0.1	25	29	354	387
FL						
GA						
HI						
ID						
IL	8.0	9.0	3,530	4,075	439	454
IN	4.2	0.9	1,309	115	313	126
IA						
KS						
KY						
LA	0.8	0.6	367	320	473	510
MI	3.1	1.6	1,345	713	438	438
MN						
MS						
MO	0.1	0.1	49	43	380	386
MT						
NE						
NV						
N ENG ²	1.5	2.1	184	261	127	122
NJ	9.3	7.6	4,164	3,487	448	457
NM						
NY	10.9	12.4	992	1,178	91	95
NC	0.1	0.1	53	40	400	398
ND						
OH	0.1	4.9	15	2,007	210	413
OK	0.1	0.1	43	53	451	443
OR						
PA	11.9	14.2	4,648	5,127	389	361
SC						
SD						
TN						
TX	1.4	1.9	774	1,057	537	545
UT						
VA						
WA						
WV						
WI	10.1	12.3	4,317	5,491	428	447
WY						
US ³	73.2	83.1	23,889	26,289	326	316

¹ Includes slaughter under Federal inspection and other Commercial slaughter, excludes farm slaughter.

² N ENG includes CT, ME, MA, NH, RI, and VT.

³ States with no data printed are still included in the US total. Data not printed to avoid disclosing individual operations.

**Commercial Hog Slaughter: By State and United States,
February 2002 and 2003 ¹**

State	Number Slaughtered		Total Live Weight		Average Live Weight	
	2002	2003	2002	2003	2002	2003
	<i>1,000 Head</i>	<i>1,000 Head</i>	<i>1,000 Pounds</i>	<i>1,000 Pounds</i>	<i>Pounds</i>	<i>Pounds</i>
AL	11.4	9.4	5,994	4,865	524	515
AK						
AZ	0.3	0.1	65	32	231	255
AR						
CA	176.4	179.8	39,658	42,729	225	238
CO	1.0	1.1	234	287	234	266
DE-MD	1.6	1.5	481	422	293	285
FL	5.3	7.7	1,009	1,420	191	184
GA	11.8	10.9	3,099	2,818	263	258
HI	2.5	2.2	521	462	208	211
ID						
IL	693.5	644.9	189,135	176,448	273	274
IN	544.9	545.0	142,365	142,614	261	262
IA	2,124.7	2,227.8	568,387	593,176	268	266
KS	23.4	29.6	7,966	9,304	341	315
KY	161.2	161.9	42,667	43,357	265	268
LA	2.8	2.7	657	588	233	221
MI	8.7	9.1	3,252	3,459	373	378
MN	670.1	694.7	176,040	182,671	263	263
MS						
MO	146.6	147.7				
MT	1.1	1.2	262	277	230	237
NE	526.9	538.1	139,919	143,594	266	267
NV						
N ENG ²	1.5	1.6	358	391	242	252
NJ	8.5	6.1	832	594	98	97
NM	0.1	0.1	31	25	213	207
NY	2.3	2.0	435	396	191	196
NC	791.9	827.1	203,515	211,256	257	255
ND	14.0	12.7	3,258	2,905	233	228
OH	87.9	90.5	23,110	24,011	263	265
OK	324.1	342.1	91,167	95,535	281	279
OR	15.9	15.9	4,044	4,118	255	259
PA	197.1	195.8	49,557	48,717	251	249
SC						
SD	315.0	352.8	82,378	93,490	261	265
TN	47.5	48.3	22,920	23,290	482	482
TX	32.7	37.0	8,914	10,745	273	290
UT	4.8	3.1	875	664	181	211
VA	297.8	299.1	77,351	77,594	260	259
WA	1.5	1.4	377	357	255	253
WV	0.6	0.6	169	140	277	248
WI	33.1	33.0	14,888	14,764	450	448
WY	0.3	0.4	75	89	256	255
US ³	7,501.2	7,680.3	2,000,262	2,047,380	267	267

¹ Includes slaughter under Federal inspection and other Commercial slaughter, excludes farm slaughter.

² N ENG includes CT, ME, MA, NH, RI, and VT.

³ States with no data printed are still included in the US total. Data not printed to avoid disclosing individual operations.

**Commercial Sheep and Lamb Slaughter: By State and United States,
February 2002 and 2003¹**

State	Number Slaughtered		Total Live Weight		Average Live Weight	
	2002	2003	2002	2003	2002	2003
	<i>1,000 Head</i>	<i>1,000 Head</i>	<i>1,000 Pounds</i>	<i>1,000 Pounds</i>	<i>Pounds</i>	<i>Pounds</i>
AL						
AK						
AZ		0.1		9		117
AR	0.1	0.1	7	6	117	114
CA						
CO						
DE-MD	2.7	2.4	307	281	113	116
FL						
GA	0.6	0.7	63	61	112	93
HI						
ID	0.3	0.3	35	38	113	115
IL	17.2	14.3	2,516	2,057	146	144
IN	2.5	1.9	245	206	98	107
IA	33.8	33.5	4,838	4,965	143	148
KS	0.1	0.2	15	19	127	97
KY	0.8	0.6	114	87	149	148
LA	0.4	0.3	46	31	123	106
MI	15.4	14.2	1,862	1,724	121	122
MN	0.2	0.1	21	16	126	112
MS						
MO	0.5	0.5	48	55	104	104
MT	0.3	0.3	38	35	127	123
NE	0.1	0.1	8	8	114	122
NV	0.1	0.1	11	11	128	129
N ENG ²	1.5	1.3	171	139	112	109
NJ	9.1	7.4	903	760	99	103
NM	2.7	2.5	298	267	111	107
NY	2.3	3.0	200	247	88	84
NC						
ND	0.3	0.1	39	10	126	178
OH	1.1	0.7	126	84	118	115
OK	0.1	0.1	16	7	124	102
OR	0.8	0.8	113	103	146	135
PA	4.6	6.4	499	696	109	108
SC						
SD	1.2	0.8	142	98	121	120
TN	0.4	0.3	34	26	89	77
TX	33.5	33.5	4,462	4,411	133	132
UT	2.5	2.7	310	330	123	124
VA						
WA	1.0	1.0	110	107	107	112
WV						
WI	0.8	0.7	111	101	141	134
WY	0.1	0.1	15	12	155	138
US ³	259.4	224.2	35,592	29,872	137	133

¹ Includes slaughter under Federal inspection and other Commercial slaughter, excludes farm slaughter.

² N ENG includes CT, ME, MA, NH, RI, and VT.

³ States with no data printed are still included in the US total. Data not printed to avoid disclosing individual operations.

**Classification of Livestock Slaughtered Under Federal Inspection:
United States**

Item	Feb 2002	Jan 2003	Feb 2003	Jan - Feb ¹		Feb 2002	Jan 2003	Feb 2003	Jan - Feb ¹	
	<i>1,000 Head</i>	<i>1,000 Head</i>	<i>1,000 Head</i>	<i>1,000 Head</i>	<i>1,000 Head</i>	<i>Percent of Total</i>	<i>Percent of Total</i>	<i>Percent of Total</i>	<i>Percent of Total</i>	<i>Percent of Total</i>
Class ²										
Cattle										
Steers	1,232	1,385	1,196	2,655	2,581	48.1	46.9	47.5	47.7	47.2
Heifers	876	968	832	1,878	1,800	34.2	32.8	33.0	33.8	32.9
All Cows	411	547	447	934	993	16.1	18.5	17.8	16.8	18.2
Dairy Cows	199	268	223	446	491	7.8	9.1	8.9	8.0	9.0
Other Cows	212	279	224	488	502	8.3	9.4	8.9	8.8	9.2
Bulls & Stags	45	51	44	96	95	1.7	1.7	1.7	1.7	1.7
Total ¹	2,564	2,950	2,519	5,563	5,469	100.0	100.0	100.0	100.0	100.0
Hogs										
Barrows & Gilts	7,155	8,395	7,334	15,420	15,728	96.7	96.7	96.7	96.7	96.7
Sows	225	265	227	486	492	3.0	3.1	3.0	3.0	3.0
Stags & Boars	20	22	19	45	41	0.3	0.3	0.3	0.3	0.3
Total ¹	7,400	8,682	7,580	15,951	16,262	100.0	100.0	100.0	100.0	100.0
Sheep										
Mature Sheep	11	10	11	22	21	4.7	4.5	5.2	4.4	4.8
Lambs & Yrlngs	233	217	200	467	417	95.3	95.5	94.8	95.6	95.2
Total ¹	244	227	211	488	438	100.0	100.0	100.0	100.0	100.0
Average Dressed Weight ³										
	<i>Pounds</i>	<i>Pounds</i>	<i>Pounds</i>	<i>Pounds</i>	<i>Pounds</i>					
Cattle										
Steers ⁴	767	769	764	768	766					
Heifers ⁴	818	832	820	822	826					
All Cows ⁴	763	769	759	766	764					
Bulls & Stags ⁴	606	597	603	604	600					
	922	922	935	918	929					
Calves & Vealers	200	191	195	198	193					
Hogs										
Barrow Gilts ⁵	199	200	199	199	200					
Sows ⁵	195	197	196	195	196					
Stags & Boars ⁵	319	313	314	319	314					
	223	235	232	225	234					
Sheep										
Mature Sheep ⁶	70	68	68	70	68					
Lamb & Yrlngs ⁶	65	62	65	64	64					
	70	68	68	70	68					

¹ Total and percentages based on unrounded data.

² Species totals and classification reported by meat inspectors, Inspection Operations, FSIS.

³ Based on packer reports.

⁴ Included in cattle average dressed weight.

⁵ Included in hog average dressed weight.

⁶ Included in sheep average dressed weight.

**Federally Inspected Slaughter: By Region and United States,
February 2003 ¹**

Standard Federal Regions	Cattle							Calves
	Total ²	Steers	Heifers	Cows			Bulls & Stags	Total
				All	Dairy	Other		
	<i>1,000 Head</i>	<i>1,000 Head</i>	<i>1,000 Head</i>	<i>1,000 Head</i>	<i>1,000 Head</i>	<i>1,000 Head</i>	<i>1,000 Head</i>	<i>1,000 Head</i>
1	1.3	0.3	0.2	0.8	0.7		0.1	2.1
2	5.9	1.4	0.3	3.8	3.1	0.6	0.4	20.0
3	81.7	34.6	4.8	40.3	30.1	10.2	2.0	14.3
4	62.9	4.0	0.3	50.4	16.8	33.6	8.2	2.0
5	286.8	108.0	33.3	136.8	86.3	50.6	8.7	28.5
6	446.3	224.7	158.9	52.7	10.8	41.9	10.1	1.6
7	1,127.9	593.4	470.1	58.1	1.5	56.6	6.2	
8	244.2	103.1	126.0	13.0	3.8	9.2	2.1	
9	148.3	74.3	6.6	65.1	58.6	6.5	2.4	11.5
10	113.7	52.7	31.6	25.9	11.8	14.2	3.5	1.1
US ²	2,519.1	1,196.4	832.0	447.0	223.4	223.5	43.7	81.3
	Hogs				Sheep			
	Total ²	Barrows & Gilts	Sows	Stags & Boars	Total ²	Mature Sheep	Lambs & Yearlings	
	<i>1,000 Head</i>	<i>1,000 Head</i>	<i>1,000 Head</i>	<i>1,000 Head</i>	<i>1,000 Head</i>	<i>1,000 Head</i>	<i>1,000 Head</i>	<i>1,000 Head</i>
1	1.3	1.3			1.2	0.3	0.9	
2	7.9	7.8	0.1		8.4	2.0	6.3	
3	495.6	494.1	1.5		8.9	0.4	8.5	
4	1,214.1	1,145.9	66.9	1.3	1.9	0.8	1.1	
5	1,978.5	1,889.4	86.5	2.6	28.7	2.9	25.8	
6	377.3	359.4	16.8	1.0	32.0	1.9	30.1	
7	2,934.1	2,873.6	46.3	14.2	33.9		33.9	
8	367.2	358.3	8.8	0.1	52.2	1.9	50.3	
9	175.7	175.6	0.1		42.2	0.3	41.9	
10	28.3	28.1	0.1		1.6	0.2	1.4	
US ²	7,579.9	7,333.5	227.1	19.3	211.0	10.9	200.1	

¹ States included in regions are as follows: 1- CT, ME, NH, VT, MA, & RI; 2- NY & NJ; 3- DE-MD, PA, WV, & VA; 4- AL, FL, GA, KY, MS, NC, SC, & TN; 5- IL, IN, MI, MN, OH, & WI; 6- AR, LA, NM, OK, & TX; 7- IA, KS, MO, & NE; 8- CO, MT, ND, SD, UT, & WY; 9- AZ, CA, HI & NV; 10- AK, ID, OR, & WA.

² Totals may not add due to rounding.

**Federally Inspected Slaughter: By Region and United States,
January - February 2003 * ¹**

Standard Federal Regions	Cattle							Calves
	Total ²	Steers	Heifers	Cows			Bulls & Stags	Total
				All	Dairy	Other		
	<i>1,000 Head</i>	<i>1,000 Head</i>	<i>1,000 Head</i>	<i>1,000 Head</i>	<i>1,000 Head</i>	<i>1,000 Head</i>	<i>1,000 Head</i>	<i>1,000 Head</i>
1	3.0	0.6	0.4	1.7	1.6	0.1	0.3	4.8
2	12.8	3.1	0.7	8.2	6.7	1.5	0.8	42.2
3	180.2	75.3	11.4	89.0	66.2	22.8	4.3	31.8
4	140.1	5.4	0.6	116.0	39.8	76.2	18.2	5.0
5	624.9	234.7	76.6	295.5	190.1	105.4	18.1	58.8
6	976.5	485.3	344.2	123.9	24.1	99.7	23.2	3.9
7	2,442.5	1,278.5	1,022.3	129.0	3.7	125.3	12.7	0.1
8	518.0	231.5	252.4	29.9	7.5	22.4	4.2	
9	315.3	149.4	17.3	143.1	127.6	15.5	5.5	23.8
10	255.9	117.6	73.7	57.1	23.7	33.4	7.5	2.3
US ²	5,469.3	2,581.5	1,799.5	993.3	491.0	502.3	95.0	172.8
	Hogs				Sheep			
	Total ²	Barrows & Gilts	Sows	Stags & Boars	Total ²	Mature Sheep	Lambs & Yearlings	
	<i>1,000 Head</i>	<i>1,000 Head</i>	<i>1,000 Head</i>	<i>1,000 Head</i>	<i>1,000 Head</i>	<i>1,000 Head</i>	<i>1,000 Head</i>	<i>1,000 Head</i>
1	2.9	2.8			2.4	0.6	1.8	
2	19.8	19.4	0.3	0.1	17.4	3.3	14.1	
3	1,053.5	1,050.3	3.2	0.1	17.7	0.9	16.8	
4	2,661.8	2,508.8	150.5	2.5	3.6	1.6	2.1	
5	4,197.9	4,015.6	176.9	5.4	58.3	5.6	52.7	
6	816.9	773.1	40.7	3.1	66.4	4.2	62.2	
7	6,267.2	6,140.3	97.0	29.9	67.0	0.1	66.9	
8	795.8	772.6	23.0	0.1	116.9	3.6	113.3	
9	387.9	387.7	0.1	0.1	85.1	0.6	84.5	
10	58.2	57.8	0.4		3.2	0.6	2.6	
US ²	16,261.8	15,728.4	492.1	41.2	438.1	21.0	417.2	

* Accumulated totals based on unrounded data.

¹ States included in regions are as follows: 1- CT, ME, NH, VT, MA, & RI; 2- NY & NJ; 3- DE-MD, PA, WV, & VA; 4- AL, FL, GA, KY, MS, NC, SC, & TN; 5- IL, IN, MI, MN, OH, & WI; 6- AR, LA, NM, OK, & TX; 7- IA, KS, MO, & NE; 8- CO, MT, ND, SD, UT, & WY; 9- AZ, CA, HI & NV; 10- AK, ID, OR, & WA.

² Totals may not add due to rounding.

**Federally Inspected Slaughter: By State and United States,
February 2003**

State	Cattle							Calves
	Total ¹	Steers	Heifers	Cows			Bulls & Stags	Total
				All	Dairy	Other		
	<i>1,000 Head</i>	<i>1,000 Head</i>	<i>1,000 Head</i>	<i>1,000 Head</i>	<i>1,000 Head</i>	<i>1,000 Head</i>	<i>1,000 Head</i>	<i>1,000 Head</i>
AL								
AK								
AZ	45.2	33.7	0.4	11.1	11.1			
AR	0.7	0.2	0.1	0.4	0.1	0.3		
CA	102.1	40.3	5.9	53.5	47.5	6.0	2.3	11.5
CO	184.3	82.7	101.1	0.4	0.4			
DE-MD	2.6	1.8	0.5	0.3	0.3			0.1
FL	7.1	0.3		6.2	1.6	4.6	0.6	
GA	26.9	0.1		22.9	0.4	22.5	4.0	
HI	0.9	0.2	0.2	0.4		0.4	0.1	
ID	57.8	24.4	12.1	18.3	7.0	11.3	2.9	
IL	65.3	38.7	26.6					9.0
IN	0.3	0.2	0.1					0.9
IA	51.4	25.7	25.6				0.1	
KS	533.9	298.6	233.9	1.4		1.4		
KY	0.6	0.4	0.1	0.1		0.1		
LA								
MI	31.0	19.3	1.6	10.0	10.0		0.1	1.5
MN	57.8	7.6	2.3	41.2	15.1	26.1	6.6	
MS								
MO	4.9	0.9	0.5	3.2	0.6	2.6	0.4	
MT	0.3	0.1	0.1	0.1		0.1		
NE	537.6	268.3	210.0	53.5	0.8	52.7	5.8	
NV	0.1							
N ENG ²	1.3	0.3	0.2	0.7	0.7		0.1	2.1
NJ	2.1	0.9	0.1	0.8	0.8		0.2	7.6
NM	1.8			1.8	1.8			
NY	3.8	0.4	0.2	3.0	2.4	0.6	0.2	12.4
NC	15.1	0.1	0.1	12.4	6.2	6.2	2.6	0.1
ND								
OH	5.0	0.5	0.2	4.2	3.9	0.3	0.1	4.8
OK	0.6			0.6	0.3	0.3		
OR	0.9	0.4	0.4				0.1	
PA	78.8	32.7	4.2	39.9	29.8	10.1	2.0	14.2
SC								
SD								
TN	0.9	0.2	0.1	0.5	0.2	0.3	0.1	
TX	443.2	224.4	158.7	50.0	8.6	41.4	10.0	1.6
UT	48.5	20.2	24.7	3.2	1.3	1.9	0.4	
VA	0.3	0.1	0.1	0.2	0.1	0.1		
WA	54.9	27.9	19.1	7.4	4.6	2.8	0.5	
WV								
WI	127.4	41.7	2.4	81.3	57.1	24.2	1.9	12.3
WY								
US ³	2,519.1	1,196.4	832.0	446.9	223.4	223.5	43.7	81.3

¹ Totals may not add due to rounding.

² N ENG includes CT, ME, MA, NH, RI, and VT.

³ States with no data printed are still included in the US total. Data not printed to avoid disclosing individual operations.

**Federally Inspected Slaughter: By State and United States,
February 2003**

State	Hogs				Sheep		
	Total ¹	Barrows & Gilts	Sows	Stags & Boars	Total ¹	Mature Sheep	Lambs & Yearlings
	<i>1,000 Head</i>	<i>1,000 Head</i>	<i>1,000 Head</i>	<i>1,000 Head</i>	<i>1,000 Head</i>	<i>1,000 Head</i>	<i>1,000 Head</i>
AL	8.5		7.2	1.3			
AK							
AZ							
AR							
CA	173.4	173.3					
CO	0.6	0.5	0.1				
DE-MD	1.5	1.4			2.4		2.4
FL	7.7	7.6	0.2				
GA							
HI	2.2	2.2					
ID					0.1		0.1
IL	627.1	581.7	43.9	1.5	13.1		13.1
IN	541.2	541.2			1.5	0.8	0.6
IA	2,225.9	2,171.3	40.3	14.2	33.3		33.3
KS							
KY	161.3	155.0	6.2		0.6	0.5	0.1
LA							
MI	7.3	2.9	4.4		13.9	2.0	11.9
MN	692.5	692.5			0.1		0.1
MS							
MO					0.5		0.5
MT	0.2	0.2			0.1		0.1
NE	536.8	536.8	0.1				
NV					0.1		0.1
N ENG ²	1.3	1.3			1.2	0.3	0.9
NJ	6.1	6.0	0.1		7.4	1.6	5.8
NM					0.6	0.5	0.1
NY	1.8	1.8			1.0	0.5	0.5
NC	817.4	812.8	4.7				
ND	12.4	12.4					
OH	81.9	71.1	10.1	0.7			
OK	340.6	336.8	3.8				
OR	15.7	15.6	0.1		0.7		0.7
PA	195.3	195.0	0.3		6.4	0.4	6.0
SC							
SD	352.0	343.3	8.7		0.7		0.7
TN	48.1	0.7	47.3		0.3		0.3
TX	27.6	21.2	5.4	1.0	31.4	1.4	29.9
UT	2.0	1.9		0.1	2.4	1.8	0.5
VA	298.8	297.6	1.2				
WA	1.3	1.3			0.8	0.2	0.6
WV							
WI	28.4	0.1	28.0	0.3			
WY							
US ³	7,579.9	7,333.5	227.1	19.3	211.0	10.9	200.1

¹ Totals may not add due to rounding.

² N ENG includes CT, ME, MA, NH, RI, and VT.

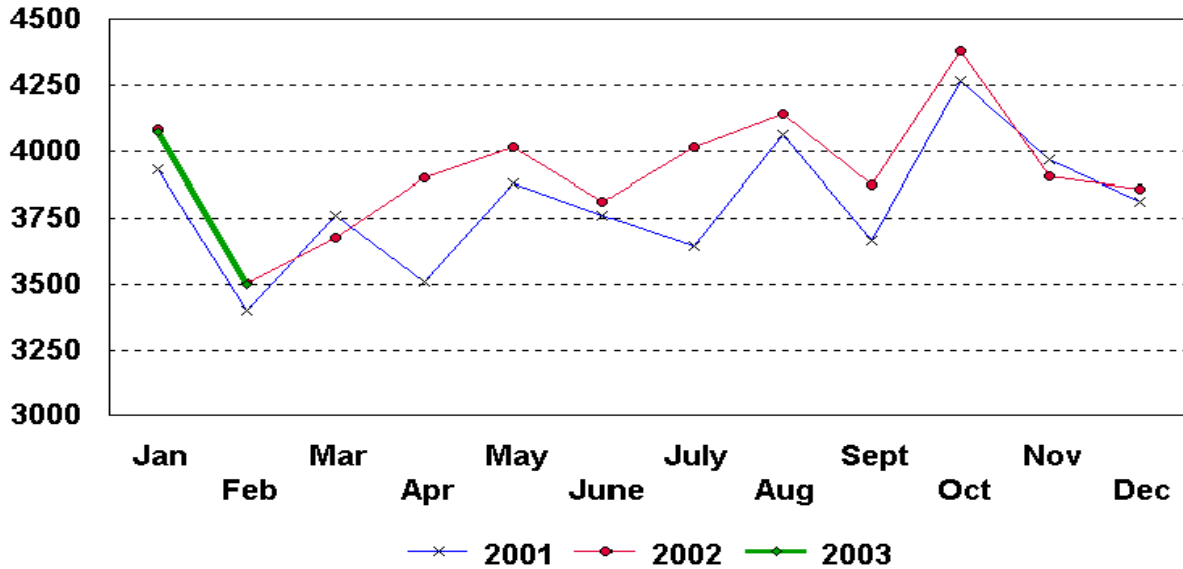
³ States with no data printed are still included in the US total. Data not printed to avoid disclosing individual operations.

Federally Inspected Slaughter: Percent of Total Commercial Slaughter by Species, United States

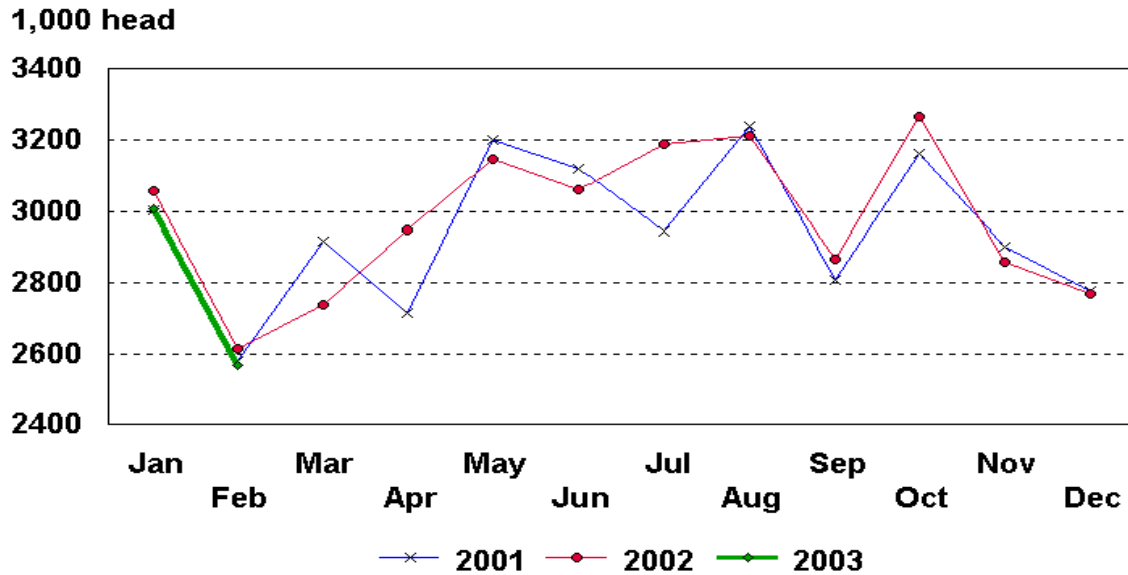
Species	Feb 2002	Jan 2003	Feb 2003	Jan - Feb	
	Percent	Percent	Percent	2002	2003
Cattle	98.0	98.1	98.0	98.1	98.1
Calves	97.3	97.7	97.8	97.5	97.7
Hogs	98.6	98.8	98.7	98.7	98.7
Sheep	94.2	95.1	94.1	94.6	94.6

U.S. Monthly Commercial Red Meat Production

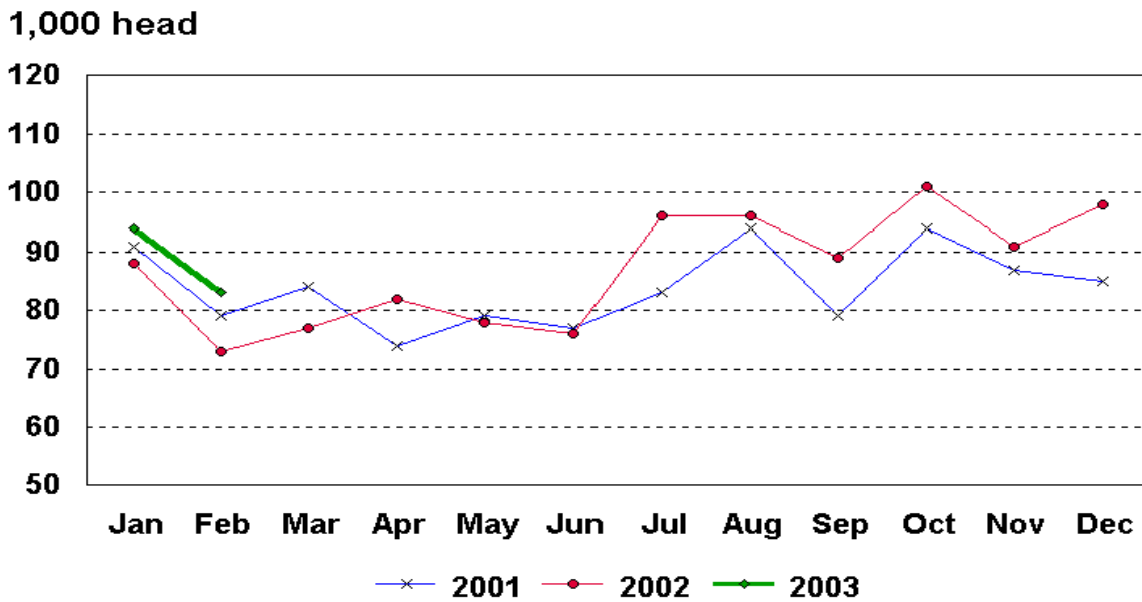
Million Pounds



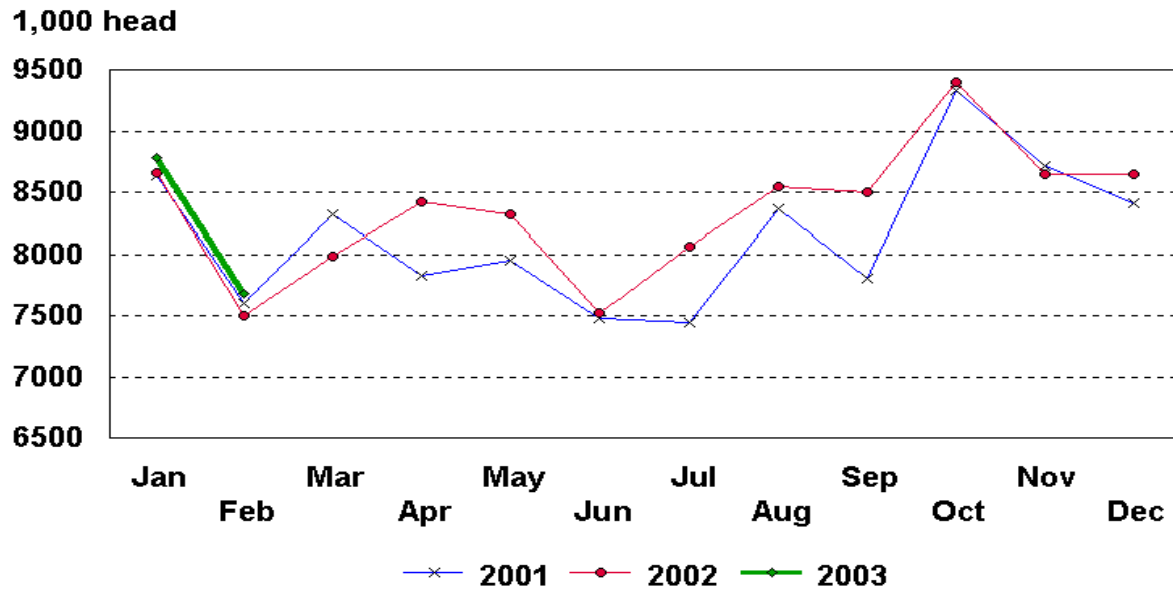
U.S. Monthly Commercial Slaughter Cattle



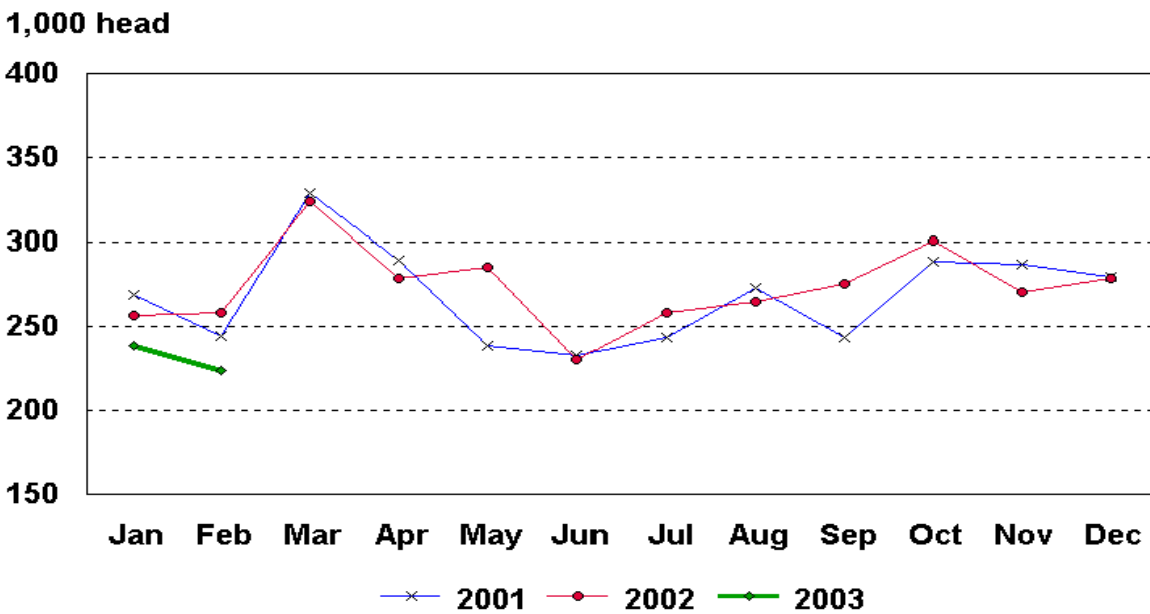
U.S. Monthly Commercial Slaughter Calves



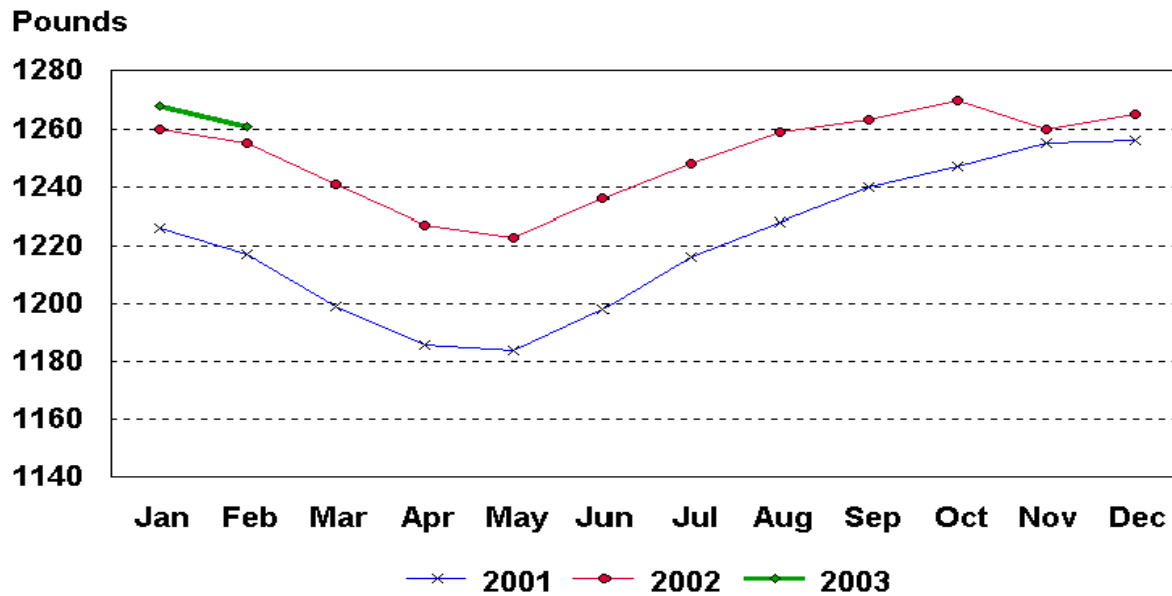
U.S. Monthly Commercial Slaughter Hogs



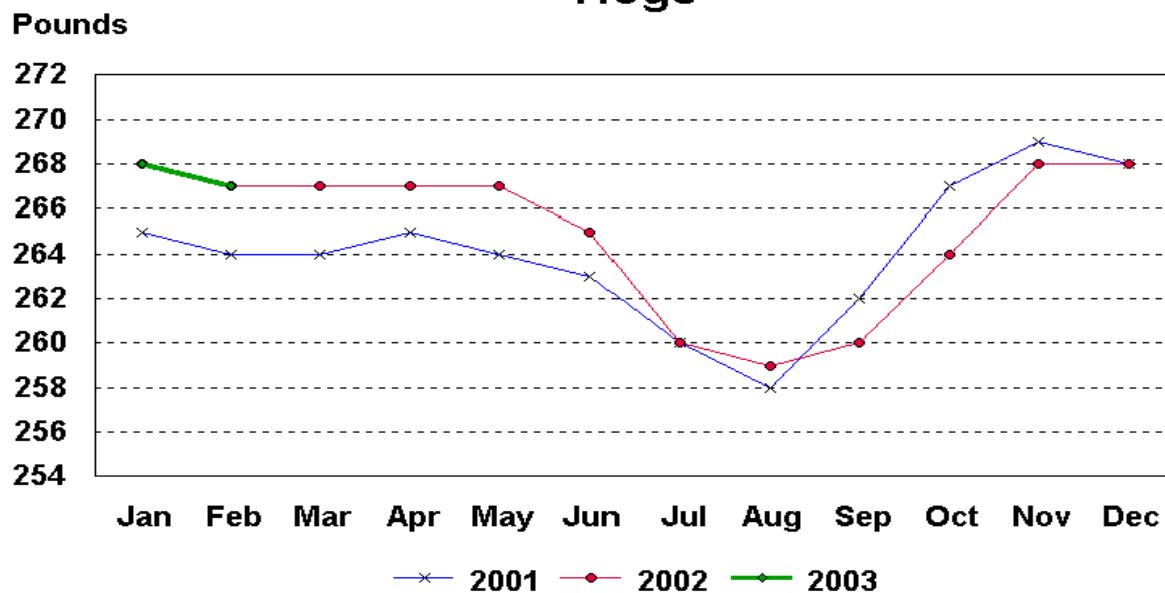
U.S. Monthly Commercial Slaughter Sheep



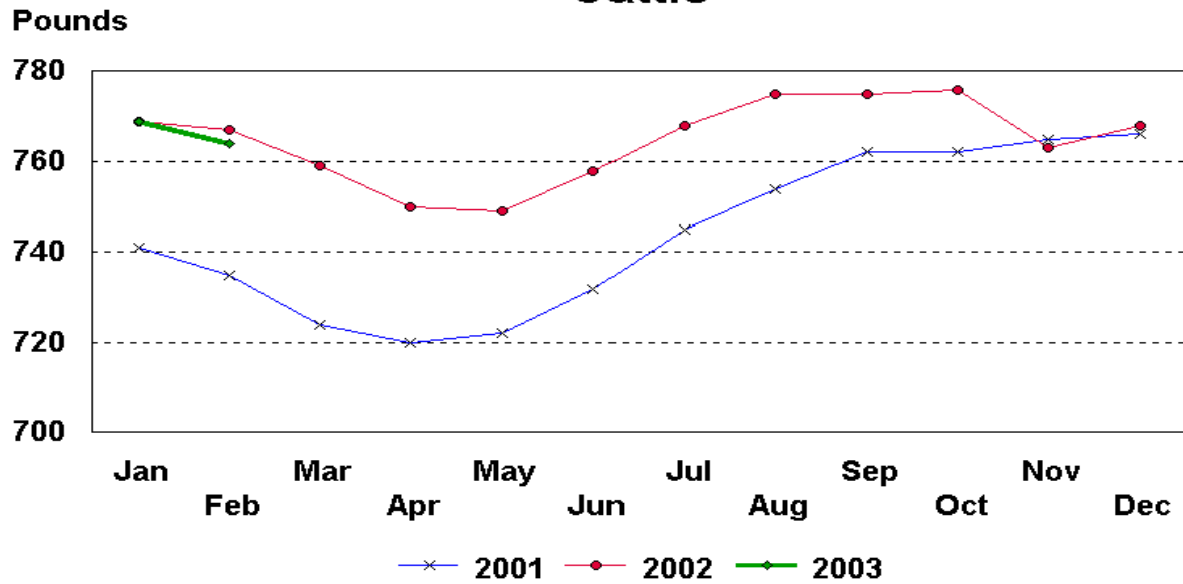
U.S. Monthly Commercial Slaughter Average Live Weight Cattle



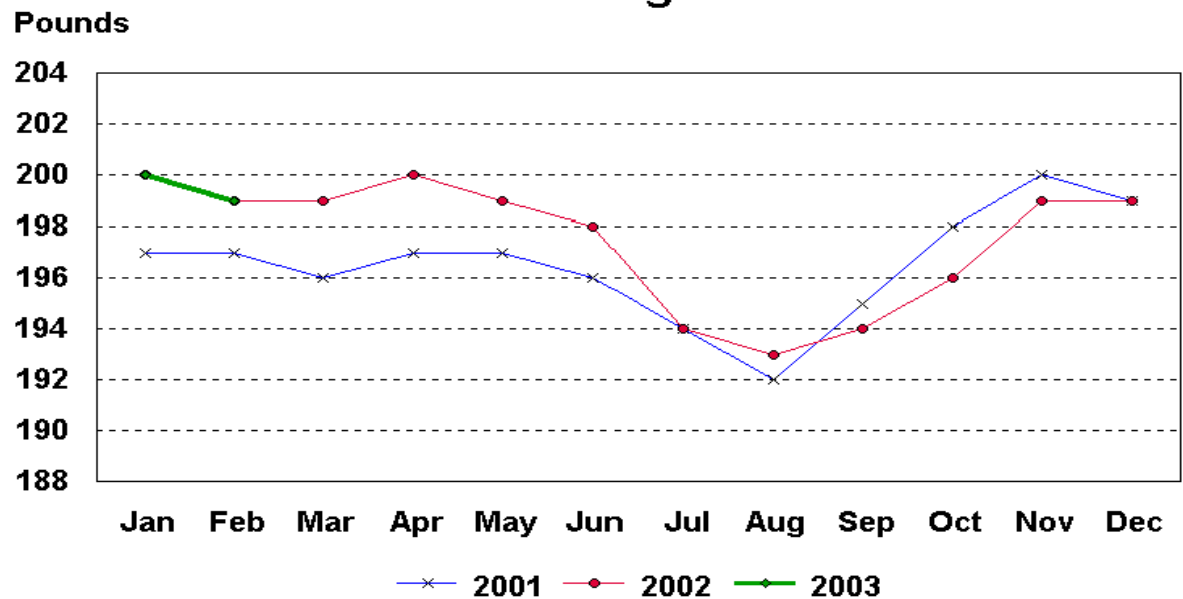
U.S. Monthly Commercial Slaughter Average Live Weight Hogs



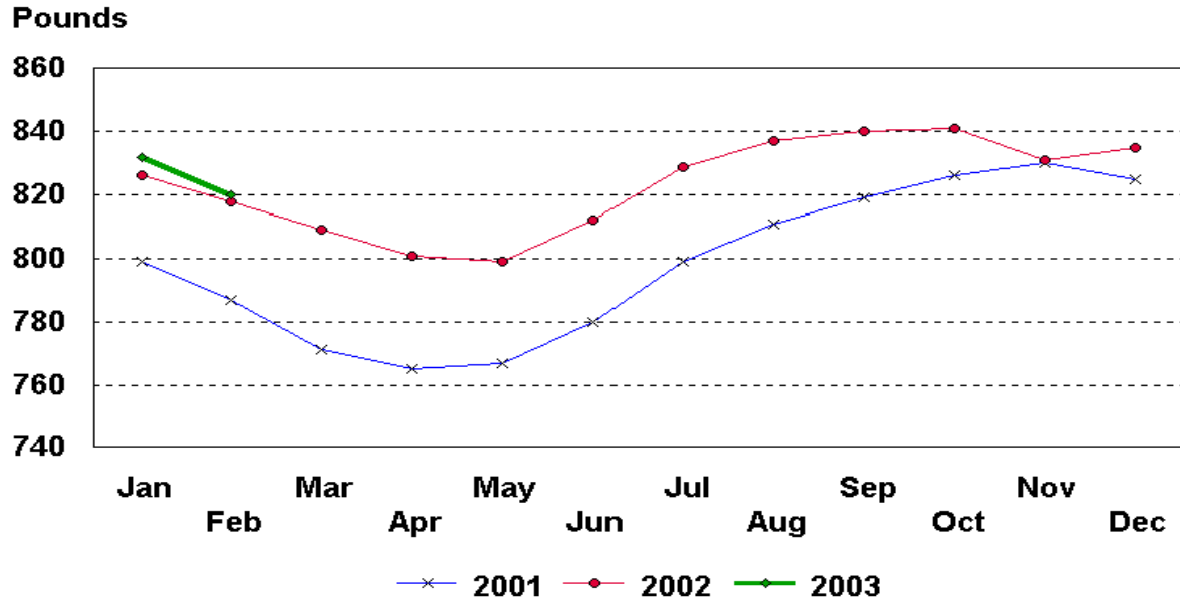
U.S. Monthly Federally Inspected Average Dressed Weight Cattle



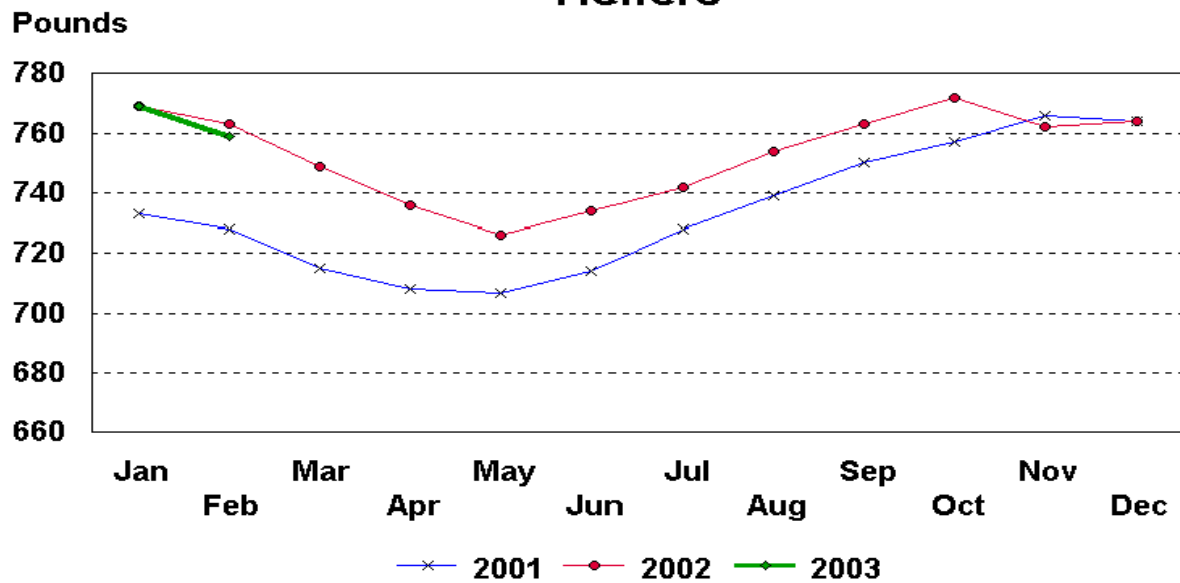
U.S. Monthly Federally Inspected Average Dressed Weight Hogs



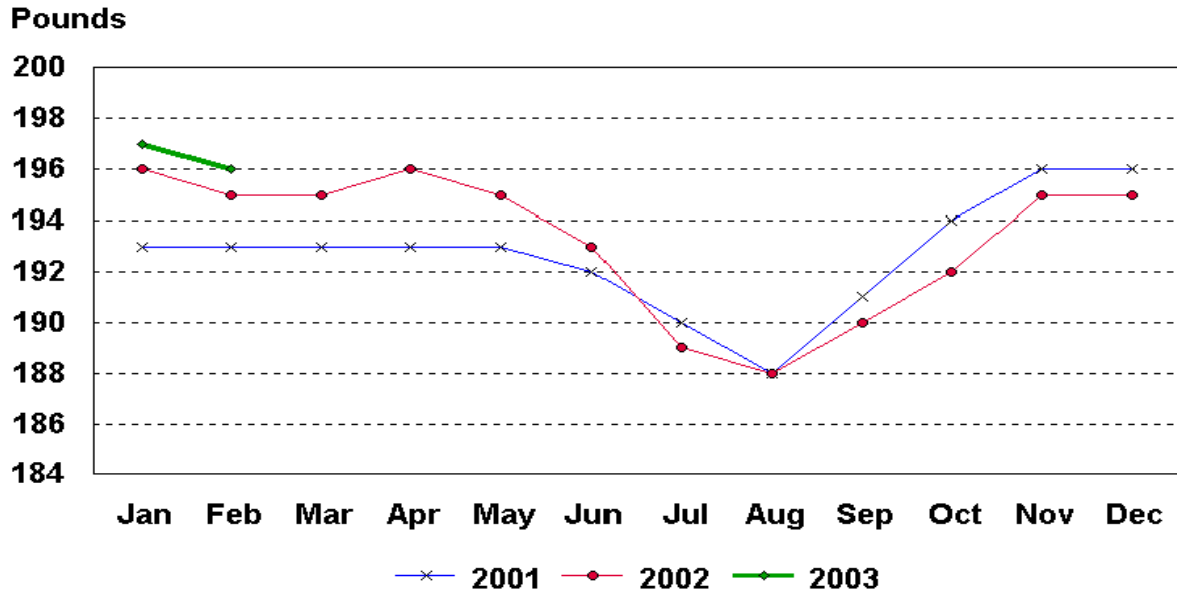
U.S. Monthly Federally Inspected Average Dressed Weight Steers



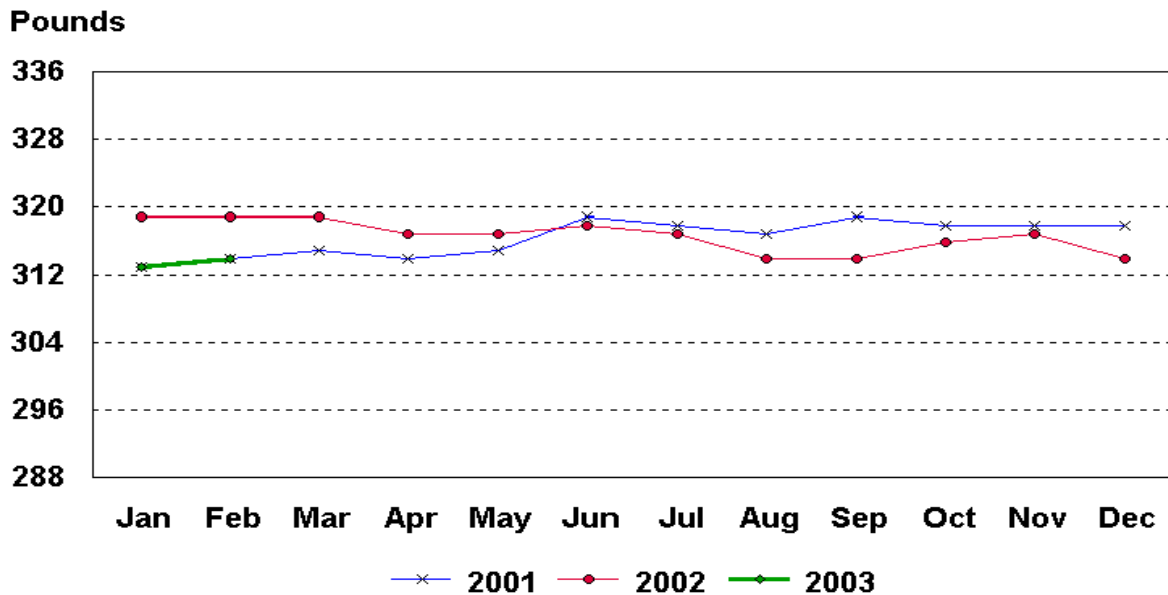
U.S. Monthly Federally Inspected Average Dressed Weight Heifers



U.S. Monthly Federally Inspected Average Dressed Weight Barrows and Gilts



U.S. Monthly Federally Inspected Average Dressed Weight Sows



Livestock Slaughter Estimates

Data Sources: Primary data for the commercial livestock slaughter estimates are obtained from the **Weekly Livestock Slaughter Report** (LS-149) questionnaires completed by inspectors from the Food Safety and Inspection Service (FSIS), USDA, which provide actual counts of animals slaughtered in Federally Inspected (FI) plants. These counts are combined with data from State-administered Non-Federally Inspected (NFI) slaughter plants to derive total commercial slaughter estimates. Over 95 percent of the total U.S. slaughter for any species is under FI. The LS-149 forms collect number of head slaughtered daily under FI by species and class as well as head kill after condemnation and total live and dressed weights.

Slightly under 900 plants in the U.S. are operated under Federal Inspection and over 2,300 plants under State inspection. Slaughter from State-inspected Talmedge-Aiken plants is included in FI totals (see Types of Plants, page 98). To prevent duplication in reporting between NFI and FI plants and assure all FI plants are included, certificates prepared by FSIS identifying operating status are constantly monitored.

Revision Policy: Revisions are generally the result of late or corrected data and are less than one-half of 1 percent. Revisions for the previous month and the year-to-date totals are noted in each monthly release by an (*) or a footnote. Final data are published in the annual summary.

Procedures and Reliability: Individual inspectors may be contacted by telephone if the **Weekly Livestock Slaughter Report** questionnaire is not received by NASS in time for summarization. This assures that all plants slaughtering a large number of head or several species are accounted for each week.

All head kill data are tabulated on a weekly basis approximately two weeks after the kill week. A computer edit compares each plant's data with the historical data for that plant. The edit provides a missing reports listing for follow-up telephone contact and imputes missing weight data. In addition, data are checked for unusual values for species, class, head kill, and pattern of kill generally, based on each plant's past operating profile.

Usually, if no form is received by mail, data for plants slaughtering fewer than 50 total head weekly of only one species are imputed. Imputation of live and dressed weight data may also be necessary on partially completed forms for any plant. The imputation is also based on the data history of each respective plant and represents the recent operating characteristics until final data are tabulated. Imputed head kill for missing plants usually is less than 1 percent of the U.S. head kill totals. Imputation for live and dressed weight data for cattle is about 10 percent and for hogs about 3 percent. The imputation for calves and sheep is more frequent and variable.

Head kill for FI slaughter before condemnation is for the actual days of the survey month, while head kill after condemnation and live and dressed weight data are for full weeks only. Average live and dressed weight and dressing percentages by State are compared with the previous week as an additional check. Fluctuations are frequently the result of plants permanently or temporarily closing and a shift in the kind of animal reported.

FI data are summarized weekly and accumulated to a monthly total for this release, while NFI data are summarized monthly only. These weekly totals are published by USDA's Agricultural Marketing Service (AMS) in **Livestock, Meat, Wool Market News, Weekly Summary, and Statistics**.

Livestock slaughter estimates are based on a census of operating plants, and, therefore, have no sampling error. However, they may be subject to errors such as omissions, duplications and mistakes in reporting, recording and processing the data. These errors are minimized through rigid quality controls in the edit and summarization process, and a careful review of all reported data for consistency and reasonableness.

Generally, no data are published if less than three plants operate for a species in a State or if one plant has 60 percent or more of the total commercial slaughter for a species. These data are included in U.S. totals. A review of the reported data is made annually.

Types of Plants

There are generally **four types** of slaughtering plants.

- (1) **Federally Inspected (FI) Plants:** Plants that transport meat interstate must employ federal inspectors to assure compliance with USDA standards. Any State whose commercial plants operate entirely under federal inspection may still have custom-exempt establishments for which NFI estimates are made.
- (2) **Talmedge-Aiken (TA) Plants:** Slaughter plants in which USDA is responsible for inspection. However, federal inspection is carried out by State employees. These plants are considered to be federally inspected.
- (3) **Non-Federally Inspected (NFI) Plants:** Plants which sell and transport only intrastate. State inspectors assure compliance with individual State standards for these NFI plants. Mobile slaughtering units are excluded and are considered farm slaughter.
- (4) **Custom-Exempt Plants:** Plants that do not sell meat but operate on a custom basis only are custom-exempt. The animals and meat are not inspected, but the facilities must meet health standards. These are considered NFI plants and head kill is included in NFI totals.

Terms and Definitions

Commercial Production: Includes slaughter and meat production in federally inspected and other plants, but excludes animals slaughtered on farms.

Dressed Weight: The weight of a chilled animal carcass. Beef with kidney knob in; veal with hide off; lamb and mutton with pluck out; pork with leaf fat and kidneys out, jowls on and head off.

Dressing Percent: Is usually expressed as a percentage yield of chilled carcass in relation to the weight of the live animal on hoof. For example, a live hog that weighed 200 pounds on hoof and yielded a carcass weighing 140 pounds would have a dressing percentage of 70.

Food and Meat Inspection: Includes examination, checking, or testing of a carcass and/or meat against established government standards and involves checking the facility for cleanliness, health of animals, or parts of animals and quality of the meat produced.

Live Weight: The gross weight of a live animal when received at the slaughter plant.

Plant, Slaughter: An establishment where animals are killed and butchered.

Red Meat: Red meat production is the carcass weight after slaughter including beef, veal, pork, and lamb and mutton. It is derived using the number of head times average dressed weight for FI and NFI separately. FI head kill must be adjusted for condemnations using the factor derived from the FSIS inspection reports.

The FI meat production formula is $(\text{FI head kill}) \times (1 - \text{condemnation factor}) \times (\text{average dressed weight}) = \text{FI red meat production}$. The condemnation factor is the number of animals condemned as a percentage of the total kill. It has been fairly stable for the last five years; running about 1.90 head per 100 head for calves, .5 per 100 for cattle, .40 per 100 for hogs and .20 per 100 for sheep. The NFI meat production formula is $(\text{NFI head kill}) \times (\text{live weight}) \times (\text{FI dressing percentage}) = \text{NFI red meat production}$.

Slaughter: Killing and butchering of animals primarily for food.

Slaughter, Farm: Animals slaughtered on farms primarily for home consumption. Excludes custom slaughter for farmers at commercial establishments, but includes mobile slaughtering on farms. These estimates appear only in the annual slaughter release.

Wholesome Meat Act: Legislation that specifies that all meat produced for sale in the U.S. must be inspected; and further, meat that is transported interstate must be inspected in compliance with federal (USDA) standards.

Index

	Page
Commercial Calf Slaughter, Number, Total, and Average Live weight, by State and U.S.	6
Commercial Cattle Slaughter, Number, Total, and Average Live weight, by State and U.S.	5
Commercial Hog Slaughter, Number, Total and Average Live weight, by State and U.S.	7
Commercial Red Meat Production, by State and U.S.	4
Commercial Sheep and Lamb Slaughter, Number, Total, and Average Live weight, by State and U.S.	8
Data Sources, Revision Policy, and Procedures and Reliability	21
Federally Inspected Classification of Number and Average Dressed Weight, by Species and Class and U.S.	9
Federally Inspected Number by Species and Class, by Regions and U.S.	10
Federally Inspected Number by Species and Class, by State and U.S.	12
Federally Inspected Percent of Total Commercial, by Species, U.S.	14
Livestock Slaughter, Number and Average Weights, by Species and Type of Slaughter, U.S.	3
Red Meat Production, Commercial and FI, by Class, U.S	2
Terms and Definitions	23
Types of Plants	22

The next "Livestock Slaughter" report will be released at 8:30 a.m. on April 17, 2003.

The United States Department of Agriculture (USDA) prohibits discrimination in all its programs on the basis of race, color, national origin, gender, religion, age, disability, political beliefs, sexual orientation, and marital or family status. (Not all prohibited bases apply to all programs.) Persons with disabilities who require alternative means for communication of program information (braille, large print, audiotape, etc.) should contact the USDA's TARGET Center at 202-720-2600 (voice and TDD).

To file a complaint of discrimination, write USDA, Director, Office of Civil Rights, Room 326-W, Whitten Building, 1400 Independence Avenue, SW, Washington, D.C., 20250-9410, or call 202-720-5964 (voice or TDD). USDA is an equal opportunity provider and employer.

ACCESS TO REPORTS!!

For your convenience, there are several ways to obtain NASS reports, data products, and services:

INTERNET ACCESS

All NASS reports are available free of charge on the worldwide Internet. For access, connect to the Internet and go to the NASS Home Page at: <http://www.usda.gov/nass/>. Select "Today's Reports" or Publications and then Reports Calendar or Publications and then Search, by Title or Subject.

E-MAIL SUBSCRIPTION

All NASS reports are available by subscription free of charge direct to your e-mail address. Starting with the NASS Home Page at <http://www.usda.gov/nass/>, click on **Publications**, then click on the **Subscribe by E-mail** button which takes you to the page describing e-mail delivery of reports. Finally, click on **Go to the Subscription Page** and follow the instructions.

AUTOFAX ACCESS

NASSFax service is available for some reports from your fax machine. Please call 202-720-2000, using the handset attached to your fax. Respond to the voice prompts. Document 0411 is a list of available reports.

PRINTED REPORTS OR DATA PRODUCTS

CALL OUR TOLL-FREE ORDER DESK: 800-999-6779 (U.S. and Canada)
Other areas, please call 703-605-6220 FAX: 703-605-6900
(Visa, MasterCard, check, or money order acceptable for payment.)

ASSISTANCE

For **assistance** with general agricultural statistics or further information about NASS or its products or services, contact the **Agricultural Statistics Hotline** at **800-727-9540**, 7:30 a.m. to 4:00 p.m. ET, or e-mail: nass@nass.usda.gov.
