



# Livestock Slaughter

---

Released May 23, 2003, by the National Agricultural Statistics Service (NASS), Agricultural Statistics Board, U.S. Department of Agriculture. For information on "Livestock Slaughter" call Liana Cuffman at (515) 284-4340, office hours 8:00 a.m. to 4:30 p.m. CT.

## Beef Production Rose from March

**Commercial red meat production** for the United States totaled 3.85 billion pounds in April, down 1 percent from the 3.90 billion pounds produced in April 2002.

April 2002 contained 22 weekdays and 4 Saturdays.

April 2003 contained 22 weekdays and 4 Saturdays.

**Beef production**, at 2.15 billion pounds, was 2 percent below the previous year. Cattle slaughter totaled 2.97 million head, up 1 percent from April 2002. The average live weight was 1,209 pounds, down 18 pounds from April a year ago.

**Veal production** totaled 16.0 million pounds, 1 percent below April a year ago. Calf slaughter totaled 79,300 head, down 3 percent from April 2002. The average live weight was 336 pounds, up 9 pounds from April a year ago.

**Pork production** totaled 1.66 billion pounds, down 1 percent from the previous year. Hog kill totaled 8.33 million head, 1 percent below April 2002. The average live weight was 268 pounds, up 1 pound from April a year ago.

**Lamb and mutton production**, at 19.4 million pounds, was up 2 percent from April 2002. Sheep slaughter totaled 295,600 head, 6 percent above last year. The average live weight was 132 pounds, down 5 pounds from April a year ago.

**January to April red meat production** was 15.12 billion pounds, virtually unchanged from 2002. Accumulated beef production was down 2 percent from last year, veal was up 6 percent, pork was up 1 percent, and lamb and mutton was down 11 percent.

**Commercial Red Meat Production: United States <sup>1</sup>**

Class	Apr 2002	Mar 2003	Apr 2003	Apr 03 % of		Jan - Apr <sup>2</sup>		
				Apr 2002	Mar 2003	2002	2003	03 as % of 02
	<i>Million Pounds</i>	<i>Million Pounds</i>	<i>Million Pounds</i>	<i>Percent</i>	<i>Percent</i>	<i>Million Pounds</i>	<i>Million Pounds</i>	<i>Percent</i>
Beef	2,195	*2,051	2,153	98	105	8,572	8,441	98
Veal	16.1	16.5	16.0	99	97	62.4	66.2	106
Pork	1,672	1,619	1,657	99	102	6,453	6,547	101
Lamb & Mutton	19.1	18.2	19.4	102	107	76.8	68.6	89
Total Red Meat	3,902	*3,705	3,846	99	104	15,164	15,123	100

\* Revised.

<sup>1</sup> Based on packers' dressed weights and excludes farm slaughter.

<sup>2</sup> Accumulated totals and percentages based on unrounded data.

**Federally Inspected Red Meat Production: United States <sup>1</sup>**

Class	Apr 2002	Mar 2003	Apr 2003	Apr 03 % of		Jan - Apr <sup>2</sup>		
				Apr 2002	Mar 2003	2002	2003	03 as % of 02
	<i>Million Pounds</i>	<i>Million Pounds</i>	<i>Million Pounds</i>	<i>Percent</i>	<i>Percent</i>	<i>Million Pounds</i>	<i>Million Pounds</i>	<i>Percent</i>
Beef	2,164	*2,020	2,123	98	105	8,444	8,314	98
Veal	15.6	16.0	15.5	99	97	60.5	64.2	106
Pork	1,654	1,602	1,640	99	102	6,380	6,477	102
Lamb & Mutton	18.4	17.6	18.6	101	106	74.0	65.9	89
Total Red Meat	3,852	*3,655	3,797	99	104	14,959	14,921	100

\* Revised.

<sup>1</sup> Based on packers' dressed weights and excludes farm slaughter.

<sup>2</sup> Accumulated totals and percentages based on unrounded data.

**Livestock Slaughter: Number and Average Weights, United States <sup>1</sup>**

Species	Unit	Apr 2002	Mar 2003	Apr 2003	Apr 03 % of		Jan - Apr <sup>2</sup>		03 % of 02
					Apr 2002	Mar 2003	2002	2003	
					<i>Percent</i>	<i>Percent</i>			<i>Prcent</i>
Cattle No.									
Fed. Insp.	Thou	2,899.1	*2,724.5	2,917.5	101	107	11,149.8	11,111.4	100
Other	Thou	49.7	50.3	48.6	98	97	209.2	206.4	99
Comm'l. <sup>3</sup>	Thou	2,948.7	*2,774.8	2,966.2	101	107	11,359.0	11,317.7	100
Live Wt/Hd									
Fed. Insp.	Lbs	1,230	1,236	1,211	98	98	1,248	1,245	100
Other	Lbs	1,079	1,107	1,095	101	99	1,087	1,096	101
Comm'l.	Lbs	1,227	1,234	1,209	99	98	1,246	1,243	100
Calves No.									
Fed. Insp.	Thou	80.1	83.0	77.2	96	93	312.6	333.0	107
Other	Thou	2.0	2.0	2.1	102	102	7.9	8.1	103
Comm'l. <sup>3</sup>	Thou	82.1	85.1	79.3	97	93	320.5	341.2	106
Live Wt/Hd									
Fed. Insp.	Lbs	325	318	335	103	105	323	320	99
Other	Lbs	428	415	421	99	101	417	419	100
Comm'l.	Lbs	327	323	336	103	104	325	323	100
Hogs No.									
Fed. Insp.	Thou	8,320.9	8,051.8	8,230.2	99	102	32,151.4	32,543.7	101
Other	Thou	104.4	100.4	103.3	99	103	422.3	409.8	97
Comm'l. <sup>3</sup>	Thou	8,425.3	8,152.1	8,333.5	99	102	32,573.6	32,953.4	101
Live Wt/Hd									
Fed. Insp.	Lbs	268	268	268	100	100	268	268	100
Other	Lbs	235	242	233	99	96	237	237	100
Comm'l.	Lbs	267	268	268	100	100	267	267	100
Sheep&Lambs No.									
Fed. Insp.	Thou	263.3	251.6	279.6	106	111	1,062.2	969.4	91
Other	Thou	15.5	12.6	15.9	102	127	56.9	53.3	94
Comm'l. <sup>3</sup>	Thou	278.9	264.1	295.6	106	112	1,119.1	1,022.7	91
Live Wt/Hd									
Fed. Insp.	Lbs	140	139	133	95	95	140	136	97
Other	Lbs	100	108	106	106	98	100	105	104
Comm'l.	Lbs	137	138	132	96	95	138	134	97

\* Revised.

<sup>1</sup> Excludes slaughter on farms.

<sup>2</sup> Accumulated totals and percentages based on unrounded data.

<sup>3</sup> Totals may not equal sum of the parts due to rounding.

**Commercial Red Meat Production: By State and United States <sup>1</sup>**

State	Apr 2002	Mar 2003	Apr 2003	Apr 03 as % of <sup>2</sup>	
				Apr 2002	Mar 2003
	<i>Million Pounds</i>	<i>Million Pounds</i>	<i>Million Pounds</i>	<i>Percent</i>	<i>Percent</i>
AL	4.4	3.6	3.6	81	100
AK					
AZ	36.1	33.2	39.0	108	117
AR	5.3	6.2	4.7	88	76
CA	112.2	115.1	119.5	107	104
CO	176.7	*158.0	154.5	87	98
DE-MD	3.0	2.7	2.6	86	98
FL	5.9	5.6	6.0	101	107
GA	22.8	20.7	23.6	104	114
HI	1.0	0.9	0.9	95	106
ID	49.0	47.5	47.3	97	100
IL	214.8	201.6	209.6	98	104
IN	119.7	116.2	120.6	101	104
IA	528.4	519.2	523.9	99	101
KS	474.5	446.4	454.6	96	102
KY	36.8	36.0	34.8	94	97
LA	1.3	1.3	1.3	100	99
MI	35.4	32.7	34.1	96	104
MN	185.2	191.0	189.1	102	99
MS	24.0	24.0	26.3	110	110
MO	39.9	35.2	39.0	98	111
MT	1.2	1.3	1.3	106	97
NE	611.0	560.3	599.0	98	107
NV	0.1	0.1	0.1	100	112
N ENG <sup>3</sup>	1.4	1.4	1.5	101	105
NJ	5.0	4.5	4.6	91	103
NM	0.9	1.2	1.0	120	89
NY	3.6	3.5	3.7	103	108
NC	181.1	172.5	183.3	101	106
ND	2.9	2.7	2.5	86	95
OH	25.3	26.5	26.1	103	98
OK	83.1	78.5	86.4	104	110
OR	3.8	3.7	3.7	96	100
PA	101.4	105.4	110.6	109	105
SC	21.7	19.8	21.3	98	107
SD	76.4	80.4	76.7	100	95
TN	17.8	19.6	18.9	106	97
TX	405.0	369.2	401.0	99	109
UT	42.4	40.1	41.4	98	103
VA	79.2	61.9	62.1	78	100
WA	47.3	45.3	52.2	110	115
WV	0.5	0.5	0.5	106	88
WI	113.8	109.3	111.9	98	102
WY	0.4	0.4	0.5	114	114
US	3,901.8	*3,705.1	3,845.5	99	104

\* Revised.

<sup>1</sup> Includes total beef, veal, pork, lamb, and mutton.

<sup>2</sup> Percentages based on unrounded data.

<sup>3</sup> N ENG includes CT, ME, MA, NH, RI, and VT.

**Commercial Cattle Slaughter: By State and United States,  
April 2002 and 2003 <sup>1</sup>**

State	Number Slaughtered		Total Live Weight		Average Live Weight	
	2002	2003	2002	2003	2002	2003
	<i>1,000 Head</i>	<i>1,000 Head</i>	<i>1,000 Pounds</i>	<i>1,000 Pounds</i>	<i>Pounds</i>	<i>Pounds</i>
AL	0.7	0.7	616	601	833	898
AK	0.1	0.1	69	88	1,064	1,261
AZ	46.5	49.2	60,872	66,051	1,308	1,341
AR	1.3	1.2	1,154	1,007	884	852
CA	106.5	114.5	137,316	146,645	1,290	1,281
CO	213.6	200.0	266,325	237,508	1,247	1,188
DE-MD	3.2	2.9	4,107	3,704	1,275	1,259
FL	8.6	8.6	9,561	9,559	1,116	1,105
GA	32.2	34.3	40,010	41,846	1,243	1,220
HI	0.9	1.0	1,007	1,003	1,066	1,034
ID	65.9	63.0	80,047	77,788	1,214	1,234
IL	77.9	83.0	95,213	101,401	1,222	1,221
IN	2.8	3.3	2,977	3,448	1,046	1,053
IA	58.0	57.3	72,821	70,351	1,255	1,228
KS	618.1	607.5	733,413	709,377	1,187	1,168
KY	1.4	1.6	1,280	1,400	890	891
LA	1.3	1.1	1,083	1,027	861	909
MI	38.4	39.3	53,261	53,081	1,388	1,352
MN	57.1	60.0	79,788	82,025	1,396	1,367
MS <sup>2</sup>						
MO	8.3	8.3	10,397	10,625	1,254	1,287
MT	1.5	1.5	1,731	1,798	1,177	1,162
NE	640.6	650.1	810,160	798,058	1,265	1,228
NV	0.1	0.1	97	98	1,017	1,013
N ENG <sup>3</sup>	1.5	1.5	1,688	1,594	1,091	1,100
NJ	2.3	2.4	2,627	2,569	1,157	1,092
NM	1.6	2.1	1,486	1,972	904	919
NY	4.3	4.4	4,931	4,941	1,148	1,126
NC	15.7	17.7	16,712	18,843	1,066	1,063
ND	1.2	1.2	1,380	1,366	1,128	1,140
OH	10.9	11.1	12,420	12,352	1,138	1,115
OK	3.7	2.9	3,977	2,998	1,064	1,043
OR	1.5	1.2	1,855	1,324	1,247	1,080
PA	85.8	93.2	109,258	119,278	1,273	1,280
SC						
SD						
TN	1.2	1.3	1,035	1,172	900	908
TX	545.8	542.1	635,202	632,706	1,164	1,167
UT	55.3	55.1	66,637	65,178	1,205	1,183
VA	0.9	0.9	780	883	844	990
WA	64.4	71.5	77,212	85,589	1,198	1,197
WV	0.6	0.6	580	627	949	976
WI	138.3	140.9	183,607	182,127	1,328	1,292
WY	0.6	0.6	637	721	1,135	1,171
US <sup>4</sup>	2,948.7	2,966.2	3,618,825	3,586,198	1,227	1,209

<sup>1</sup> Includes slaughter under Federal inspection and other Commercial slaughter, excludes farm slaughter.

<sup>2</sup> Data not printed to avoid disclosing individual operations.

<sup>3</sup> N ENG includes CT, ME, MA, NH, RI, and VT.

<sup>4</sup> Accumulated totals and percentages based on unrounded data. States with no data printed are still included in the US total.

**Commercial Calf Slaughter: By State and United States,  
April 2002 and 2003 <sup>1</sup>**

State	Number Slaughtered		Total Live Weight		Average Live Weight	
	2002	2003	2002	2003	2002	2003
	<i>1,000 Head</i>	<i>1,000 Head</i>	<i>1,000 Pounds</i>	<i>1,000 Pounds</i>	<i>Pounds</i>	<i>Pounds</i>
AL						
AK						
AZ						
AR						
CA	9.7	10.5	1,472	1,780	152	169
CO						
DE-MD	0.1	0.1	42	33	344	349
FL						
GA						
HI						
ID						
IL	8.8	8.7	3,869	3,967	441	456
IN	2.1	0.5	742	62	347	127
IA						
KS						
KY						
LA	0.8	0.8	402	398	503	487
MI	4.9	2.0	2,191	883	443	443
MN						
MS <sup>2</sup>						
MO						
MT						
NE						
NV						
N ENG <sup>3</sup>	2.0	2.2	241	294	120	134
NJ	9.9	8.4	4,507	3,801	456	452
NM						
NY	13.2	10.8	1,161	1,060	88	99
NC	0.1	0.1	47	39	385	407
ND						
OH	0.1	5.3	12	2,150	230	409
OK	0.1	0.1	47	48	417	426
OR						
PA	14.0	14.6	5,306	5,586	379	381
SC						
SD						
TN	0.1	0.1	35	56	426	513
TX	1.1	1.5	590	822	562	557
UT						
VA						
WA						
WV						
WI	13.0	11.3	5,687	5,100	439	453
WY						
US <sup>4</sup>	82.1	79.3	26,876	26,677	327	336

<sup>1</sup> Includes slaughter under Federal inspection and other Commercial slaughter, excludes farm slaughter.

<sup>2</sup> Data not printed to avoid disclosing individual operations.

<sup>3</sup> N ENG includes CT, ME, MA, NH, RI, and VT.

<sup>4</sup> Accumulated totals and percentages based on unrounded data. States with no data printed are still included in the US total.

**Commercial Hog Slaughter: By State and United States,  
April 2002 and 2003 <sup>1</sup>**

State	Number Slaughtered		Total Live Weight		Average Live Weight	
	2002	2003	2002	2003	2002	2003
	<i>1,000 Head</i>	<i>1,000 Head</i>	<i>1,000 Pounds</i>	<i>1,000 Pounds</i>	<i>Pounds</i>	<i>Pounds</i>
AL	11.8	9.7	6,248	4,978	528	515
AK	0.2	0.1	32	24	169	173
AZ	0.8	0.9	182	242	238	264
AR						
CA	195.5	198.4	45,694	47,824	234	241
CO	0.9	1.0	212	274	224	268
DE-MD	1.3	1.1	353	288	277	271
FL	7.2	8.8	1,340	1,561	185	178
GA	12.6	13.2	3,262	3,262	260	247
HI	2.7	2.3	559	492	210	213
ID						
IL	741.0	695.3	203,629	192,520	275	277
IN	592.5	599.3	155,413	157,272	262	262
IA	2,419.3	2,405.2	648,048	642,640	268	267
KS	27.4	21.0	8,693	7,087	318	337
KY	180.8	171.1	48,145	45,460	266	266
LA	2.0	2.3	424	483	215	209
MI	9.0	9.4	3,346	3,543	372	377
MN	728.6	738.5	191,956	195,695	263	265
MS <sup>2</sup>						
MO	175.4	173.2				
MT	0.9	1.1	211	266	233	243
NE	574.2	568.4	152,066	151,468	265	266
NV						
N ENG <sup>3</sup>	1.7	1.6	468	420	279	263
NJ	7.5	7.4	739	714	99	97
NM	0.1	0.1	32	31	213	212
NY	2.5	2.3	493	455	201	198
NC	888.8	905.0	228,931	230,289	258	254
ND	13.7	11.3	3,175	2,604	233	230
OH	98.9	95.7	26,335	25,736	266	269
OK	387.9	401.7	108,250	113,598	279	283
OR	16.9	17.4	4,321	4,526	256	260
PA	208.8	228.3	51,306	57,130	246	250
SC						
SD	352.1	356.6	92,125	93,600	262	263
TN	53.7	56.9	25,860	27,435	482	482
TX	37.7	35.4	10,367	10,326	275	291
UT	4.8	3.6	904	795	189	220
VA	398.7	315.5	104,696	81,834	263	259
WA	1.8	1.7	464	425	253	254
WV	0.6	0.6	145	164	245	282
WI	40.9	40.9	18,188	18,775	444	459
WY	0.3	0.4	79	95	259	255
US <sup>4</sup>	8,425.3	8,333.5	2,253,148	2,231,821	267	268

<sup>1</sup> Includes slaughter under Federal inspection and other Commercial slaughter, excludes farm slaughter.

<sup>2</sup> Data not printed to avoid disclosing individual operations.

<sup>3</sup> N ENG includes CT, ME, MA, NH, RI, and VT.

<sup>4</sup> Accumulated totals and percentages based on unrounded data. States with no data printed are still included in the US total.

**Commercial Sheep and Lamb Slaughter: By State and United States,  
April 2002 and 2003 <sup>1</sup>**

State	Number Slaughtered		Total Live Weight		Average Live Weight	
	2002	2003	2002	2003	2002	2003
	<i>1,000 Head</i>	<i>1,000 Head</i>	<i>1,000 Pounds</i>	<i>1,000 Pounds</i>	<i>Pounds</i>	<i>Pounds</i>
AL						
AK						
AZ	0.1	0.3	11	33	96	130
AR						
CA						
CO						
DE-MD	3.4	2.9	397	325	117	112
FL						
GA	0.5	0.5	61	54	118	99
HI						
ID	0.3	0.3	35	33	116	115
IL	20.0	21.3	2,703	2,640	135	124
IN	3.0	4.3	329	436	108	100
IA	35.5	37.4	5,331	5,809	150	155
KS	0.1	0.2	14	16	120	97
KY	0.8	0.9	109	129	142	139
LA	0.2	0.1	17	14	103	100
MI	15.2	16.5	1,851	1,963	122	119
MN	0.2	0.1	23	15	114	115
MS <sup>2</sup>						
MO	0.4	0.7	39	68	105	103
MT	0.2	0.3	20	40	123	140
NE	0.1	0.1	8	8	113	113
NV	0.1	0.1	17	12	132	106
N ENG <sup>3</sup>	2.3	4.0	232	378	100	94
NJ	9.8	12.3	910	1,060	93	86
NM	2.9	2.2	324	236	111	105
NY	4.2	9.2	362	681	86	74
NC						
ND						
OH	1.1	2.2	120	241	107	110
OK	0.1	0.1	19	10	134	135
OR	0.8	1.4	102	187	131	136
PA	6.0	10.6	589	1,102	99	104
SC						
SD	1.4	1.4	158	186	115	130
TN	0.4	0.5	30	41	82	84
TX	27.7	36.6	3,502	4,470	126	122
UT	2.7	3.0	328	380	122	127
VA						
WA	0.5	0.9	60	102	111	120
WV						
WI	1.0	0.9	137	116	136	136
WY	0.1	0.1	14	14	144	142
US <sup>4</sup>	278.9	295.6	38,343	38,868	137	132

<sup>1</sup> Includes slaughter under Federal inspection and other Commercial slaughter, excludes farm slaughter.

<sup>2</sup> Data not printed to avoid disclosing individual operations.

<sup>3</sup> N ENG includes CT, ME, MA, NH, RI, and VT.

<sup>4</sup> Accumulated totals and percentages based on unrounded data. States with no data printed are still included in the US total.



**Classification of Livestock Slaughtered Under Federal Inspection:  
United States**

Item	Apr 2002	Mar 2003	Apr 2003	Jan - Apr <sup>1</sup>		Apr 2002	Mar 2003	Apr 2003	Jan - Apr <sup>1</sup>	
	1,000 Head	1,000 Head	1,000 Head	1,000 Head	1,000 Head	Percent of Total	Percent of Total	Percent of Total	Percent of Total	Percent of Total
<b>Class<sup>2</sup></b>										
<b>Cattle</b>										
Steers	1,452	*1,308	1,497	5,413	5,387	50.1	48.0	51.3	48.5	48.5
Heifers	948	*874	877	3,730	3,550	32.7	32.1	30.1	33.5	32.0
All Cows	447	494	492	1,811	1,980	15.5	18.2	16.9	16.3	17.8
Dairy Cows	207	250	239	856	980	7.2	9.2	8.2	7.7	8.8
Other Cows	240	244	253	955	1,000	8.3	9.0	8.7	8.6	9.0
Bulls & Stags	52	48	51	195	195	1.8	1.8	1.8	1.8	1.8
<b>Total<sup>1</sup></b>	<b>2,899</b>	<b>*2,725</b>	<b>2,918</b>	<b>11,150</b>	<b>11,111</b>	<b>100.0</b>	<b>100.0</b>	<b>100.0</b>	<b>100.0</b>	<b>100.0</b>
<b>Hogs</b>										
Barrows & Gilts	8,040	7,766	7,947	31,066	31,442	96.6	96.5	96.6	96.6	96.6
Sows	257	264	262	993	1,018	3.1	3.3	3.2	3.1	3.1
Stags & Boars	24	22	21	92	84	0.3	0.3	0.3	0.3	0.3
<b>Total<sup>1</sup></b>	<b>8,321</b>	<b>8,052</b>	<b>8,230</b>	<b>32,151</b>	<b>32,544</b>	<b>100.0</b>	<b>100.0</b>	<b>100.0</b>	<b>100.0</b>	<b>100.0</b>
<b>Sheep</b>										
Mature Sheep	12	10	12	44	43	4.4	3.9	4.3	4.2	4.4
Lambs & Yrlngs	252	242	268	1,018	926	95.6	96.1	95.7	95.8	95.6
<b>Total<sup>1</sup></b>	<b>263</b>	<b>252</b>	<b>280</b>	<b>1,062</b>	<b>969</b>	<b>100.0</b>	<b>100.0</b>	<b>100.0</b>	<b>100.0</b>	<b>100.0</b>
<b>Average Dressed Weight<sup>3</sup></b>										
	<i>Pounds</i>	<i>Pounds</i>	<i>Pounds</i>	<i>Pounds</i>	<i>Pounds</i>					
<b>Cattle</b>										
Steers <sup>4</sup>	750	745	731	761	752					
Heifers <sup>4</sup>	801	798	781	813	806					
All Cows <sup>4</sup>	736	738	710	753	744					
Bulls & Stags <sup>4</sup>	599	598	598	603	599					
	924	924	919	920	925					
Calves & Vealers	199	195	205	198	196					
<b>Hogs</b>										
Barrow Gilts <sup>5</sup>	200	200	200	199	200					
Sows <sup>5</sup>	196	196	196	195	196					
Stags & Boars <sup>5</sup>	317	313	315	318	314					
	228	236	241	226	236					
<b>Sheep</b>										
Mature Sheep <sup>6</sup>	70	70	67	70	68					
Lamb & Yrlngs <sup>6</sup>	64	62	65	64	64					
	70	70	67	70	68					

\* Revised.

<sup>1</sup> Total and percentages based on unrounded data.

<sup>2</sup> Species totals and classification reported by meat inspectors, Inspection Operations, FSIS.

<sup>3</sup> Based on packer reports.

<sup>4</sup> Included in cattle average dressed weight.

<sup>5</sup> Included in hog average dressed weight.

<sup>6</sup> Included in sheep average dressed weight.

**Federally Inspected Slaughter: By Region and United States,  
April 2003 <sup>1</sup>**

Standard Federal Regions	Cattle							Calves
	Total <sup>2</sup>	Steers	Heifers	Cows			Bulls & Stags	Total
				All	Dairy	Other		
	<i>1,000 Head</i>	<i>1,000 Head</i>	<i>1,000 Head</i>	<i>1,000 Head</i>	<i>1,000 Head</i>	<i>1,000 Head</i>	<i>1,000 Head</i>	<i>1,000 Head</i>
1	1.3	0.2	0.2	0.8	0.7		0.2	2.2
2	6.6	1.6	0.3	4.2	3.2	0.9	0.5	19.1
3	96.2	42.5	7.5	42.8	32.1	10.8	3.4	14.7
4	74.0	1.3	0.4	61.4	20.0	41.4	10.9	1.4
5	319.7	129.4	38.3	142.8	95.2	47.6	9.3	27.5
6	542.0	285.3	179.4	65.3	10.4	54.9	12.0	1.2
7	1,313.9	752.0	491.6	65.1	1.4	63.6	5.2	
8	266.0	134.6	114.7	14.8	4.1	10.7	1.9	
9	163.8	84.7	8.0	67.0	58.5	8.5	4.2	10.2
10	134.1	65.2	36.7	28.4	13.7	14.7	3.7	0.8
US <sup>2</sup>	2,917.5	1,496.8	877.0	492.5	239.3	253.2	51.2	77.2
	Hogs				Sheep			
	Total <sup>2</sup>	Barrows & Gilts	Sows	Stags & Boars	Total <sup>2</sup>	Mature Sheep	Lambs & Yearlings	
	<i>1,000 Head</i>	<i>1,000 Head</i>	<i>1,000 Head</i>	<i>1,000 Head</i>	<i>1,000 Head</i>	<i>1,000 Head</i>	<i>1,000 Head</i>	
1	1.3	1.3			3.7	0.5	3.2	
2	9.5	9.2	0.2	0.1	20.6	1.6	19.0	
3	544.4	543.0	1.5		13.6	1.0	12.6	
4	1,341.7	1,264.5	75.9	1.3	2.4	1.1	1.3	
5	2,140.9	2,027.1	110.4	3.5	38.2	2.9	35.3	
6	437.1	414.9	21.5	0.7	34.7	1.7	33.0	
7	3,159.1	3,099.7	43.6	15.9	38.0		37.9	
8	369.5	361.0	8.5		75.4	2.2	73.2	
9	194.9	194.8	0.1		50.9	0.6	50.3	
10	31.8	31.6	0.2		2.1	0.4	1.7	
US <sup>2</sup>	8,230.2	7,947.0	261.8	21.4	279.6	12.1	267.5	

<sup>1</sup> States included in regions are as follows: 1- CT, ME, NH, VT, MA, & RI; 2- NY & NJ; 3- DE-MD, PA, WV, & VA; 4- AL, FL, GA, KY, MS, NC, SC, & TN; 5- IL, IN, MI, MN, OH, & WI; 6- AR, LA, NM, OK, & TX; 7- IA, KS, MO, & NE; 8- CO, MT, ND, SD, UT, & WY; 9- AZ, CA, HI & NV; 10- AK, ID, OR, & WA.

<sup>2</sup> Totals may not add due to rounding.

**Federally Inspected Slaughter: By Region and United States,  
January - April 2003 \* <sup>1</sup>**

Standard Federal Regions	Cattle							Calves
	Total <sup>2</sup>	Steers	Heifers	Cows			Bulls & Stags	Total
				All	Dairy	Other		
	<i>1,000 Head</i>	<i>1,000 Head</i>	<i>1,000 Head</i>	<i>1,000 Head</i>	<i>1,000 Head</i>	<i>1,000 Head</i>	<i>1,000 Head</i>	<i>1,000 Head</i>
1	5.7	1.1	0.7	3.3	3.2	0.1	0.7	9.2
2	25.9	6.2	1.3	16.6	13.3	3.2	1.8	82.0
3	366.7	154.4	25.6	176.6	131.6	44.9	10.1	62.1
4	283.6	8.1	1.3	235.3	80.7	154.6	38.9	8.5
5	1,256.2	482.9	152.7	584.0	379.2	204.8	36.6	115.2
6	2,013.2	1,028.4	686.2	251.6	47.1	204.5	46.9	6.7
7	4,975.9	2,685.2	2,007.4	259.9	7.4	252.5	23.5	0.1
8	1,041.2	480.9	493.2	59.0	15.6	43.3	8.1	
9	631.0	302.9	33.4	281.7	250.8	30.9	13.0	45.0
10	511.9	236.6	148.5	111.8	50.9	60.9	15.0	4.2
US <sup>2</sup>	11,111.4	5,386.7	3,550.4	1,979.6	979.8	999.8	194.7	333.0
	Hogs				Sheep			
	Total <sup>2</sup>	Barrows & Gilts	Sows	Stags & Boars	Total <sup>2</sup>	Mature Sheep	Lambs & Yearlings	
	<i>1,000 Head</i>	<i>1,000 Head</i>	<i>1,000 Head</i>	<i>1,000 Head</i>	<i>1,000 Head</i>	<i>1,000 Head</i>	<i>1,000 Head</i>	<i>1,000 Head</i>
1	5.7	5.6	0.1		7.3	1.5	5.9	
2	38.8	37.9	0.7	0.2	46.3	6.0	40.3	
3	2,137.0	2,130.5	6.4	0.1	39.4	2.5	36.9	
4	5,277.3	4,969.0	303.0	5.3	7.8	3.4	4.4	
5	8,444.3	8,042.6	389.4	12.3	126.9	11.2	115.8	
6	1,660.6	1,569.0	86.7	4.9	134.0	7.6	126.4	
7	12,535.5	12,283.9	190.4	61.2	144.2	0.1	144.1	
8	1,552.0	1,511.8	40.0	0.1	263.3	7.8	255.5	
9	772.5	772.1	0.3	0.1	193.5	1.6	191.9	
10	119.9	119.1	0.7	0.1	6.5	1.2	5.3	
US <sup>2</sup>	32,543.7	31,441.7	1,017.7	84.3	969.4	42.9	926.5	

\* Accumulated totals based on unrounded data.

<sup>1</sup> States included in regions are as follows: 1- CT, ME, NH, VT, MA, & RI; 2- NY & NJ; 3- DE-MD, PA, WV, & VA; 4- AL, FL, GA, KY, MS, NC, SC, & TN; 5- IL, IN, MI, MN, OH, & WI; 6- AR, LA, NM, OK, & TX; 7- IA, KS, MO, & NE; 8- CO, MT, ND, SD, UT, & WY; 9- AZ, CA, HI & NV; 10- AK, ID, OR, & WA.

<sup>2</sup> Totals may not add due to rounding.

**Federally Inspected Slaughter: By State and United States,  
April 2003**

State	Cattle						Calves	
	Total <sup>1</sup>	Steers	Heifers	Cows			Bulls & Stags	Total
				All	Dairy	Other		
	<i>1,000 Head</i>	<i>1,000 Head</i>	<i>1,000 Head</i>	<i>1,000 Head</i>	<i>1,000 Head</i>	<i>1,000 Head</i>	<i>1,000 Head</i>	<i>1,000 Head</i>
AL								
AK	0.1							
AZ	48.7	37.0	0.6	11.1	11.1			
AR	0.6	0.2	0.1	0.3		0.3	0.1	
CA	114.1	47.3	7.2	55.5	47.4	8.1	4.1	10.2
CO	199.4	111.1	87.6	0.5	0.5		0.1	
DE-MD	2.9	2.1	0.6	0.2	0.2			0.1
FL	8.6	0.4		7.7	1.1	6.6	0.5	
GA	33.3	0.1		28.7	0.5	28.2	4.5	
HI	1.0	0.3	0.2	0.5	0.1	0.4	0.1	
ID	61.5	26.3	12.0	20.3	8.3	12.0	3.0	
IL	80.6	50.5	30.1					8.7
IN	0.2	0.1	0.1					0.5
IA	56.1	33.9	22.1				0.1	
KS	604.1	348.4	253.7	2.1		2.1		
KY	0.7	0.4	0.2	0.1	0.1			
LA								
MI	37.2	23.7	1.8	11.5	11.5		0.1	1.9
MN	58.0	7.5	3.3	40.9	16.2	24.7	6.4	
MS								
MO	5.6	0.9	0.4	3.8	0.7	3.1	0.5	
MT	0.4	0.1	0.1	0.1		0.1	0.1	
NE	648.0	368.9	215.3	59.1	0.7	58.4	4.7	
NV	0.1	0.1						
N ENG <sup>2</sup>	1.3	0.2	0.2	0.7	0.7		0.2	2.2
NJ	2.3	1.1	0.1	0.8	0.7	0.1	0.2	8.4
NM	1.7			1.7	1.7			
NY	4.2	0.4	0.2	3.3	2.5	0.8	0.3	10.7
NC	17.2	0.1	0.1	13.2	6.9	6.3	3.8	0.1
ND				0.1				
OH	5.9	0.4	0.2	5.2	4.9	0.3	0.1	5.2
OK	0.7	0.1		0.6	0.3	0.3		
OR	1.0	0.3	0.4	0.1	0.1		0.2	
PA	92.9	40.3	6.8	42.5	31.8	10.7	3.3	14.6
SC								
SD								
TN	0.9	0.3	0.1	0.5	0.2	0.3	0.1	0.1
TX	539.0	285.1	179.2	62.7	8.3	54.4	11.9	1.2
UT	54.4	23.1	26.8	3.9	1.5	2.4	0.5	
VA	0.3	0.1	0.1	0.1		0.1		
WA	71.5	38.6	24.3	8.0	5.3	2.7	0.6	
WV	0.1							
WI	137.9	47.2	2.9	85.2	62.6	22.6	2.7	11.2
WY								
US <sup>3</sup>	2,917.5	1,496.8	877.0	492.5	239.3	253.2	51.2	77.2

<sup>1</sup> Totals may not add due to rounding.

<sup>2</sup> N ENG includes CT, ME, MA, NH, RI, and VT.

<sup>3</sup> States with no data printed are still included in the US total. Data not printed to avoid disclosing individual operations.

**Federally Inspected Slaughter: By State and United States,  
April 2003**

State	Hogs				Sheep		
	Total <sup>1</sup>	Barrows & Gilts	Sows	Stags & Boars	Total <sup>1</sup>	Mature Sheep	Lambs & Yearlings
	<i>1,000 Head</i>	<i>1,000 Head</i>	<i>1,000 Head</i>	<i>1,000 Head</i>	<i>1,000 Head</i>	<i>1,000 Head</i>	<i>1,000 Head</i>
AL	8.7		7.5	1.2			
AK	0.1	0.1					
AZ							
AR							
CA	192.2	192.1	0.1				
CO	0.6	0.5	0.1				
DE-MD	1.1	1.0			2.9	0.1	2.8
FL	8.8	8.6	0.2				
GA							
HI	2.3	2.3					
ID					0.1		0.1
IL	676.8	617.3	57.2	2.2	18.6		18.6
IN	595.0	595.0			3.1	1.0	2.1
IA	2,403.2	2,349.8	37.6	15.8	37.3		37.3
KS							
KY	170.6	165.0	5.6		0.9	0.7	0.2
LA							
MI	7.7	3.0	4.7		16.3	1.8	14.5
MN	736.3	736.3			0.1		0.1
MS							
MO					0.6		0.6
MT	0.2	0.2			0.1	0.1	0.1
NE	567.2	567.2					
NV					0.1		0.1
N ENG <sup>2</sup>	1.3	1.3			3.7	0.5	3.2
NJ	7.4	7.2	0.2		12.3	1.0	11.3
NM					0.3	0.3	
NY	2.1	2.1			8.3	0.6	7.7
NC	893.3	888.0	5.2				
ND	11.0	10.9					
OH	87.7	75.3	11.4	0.9			
OK	398.2	392.8	5.4				
OR	17.2	17.1	0.1		1.3	0.1	1.2
PA	227.9	227.6	0.3		10.5	0.8	9.7
SC							
SD	355.6	347.4	8.2		1.3		1.3
TN	56.7	0.8	55.9		0.5		0.4
TX	27.6	20.5	6.4	0.7	34.4	1.4	33.0
UT	2.1	2.0	0.1		2.6	2.1	0.5
VA	315.4	314.3	1.2				
WA	1.6	1.6			0.8	0.3	0.4
WV							
WI	37.5	0.1	37.0	0.3	0.1		0.1
WY							
US <sup>3</sup>	8,230.2	7,947.0	261.8	21.4	279.6	12.1	267.5

<sup>1</sup> Totals may not add due to rounding.

<sup>2</sup> N ENG includes CT, ME, MA, NH, RI, and VT.

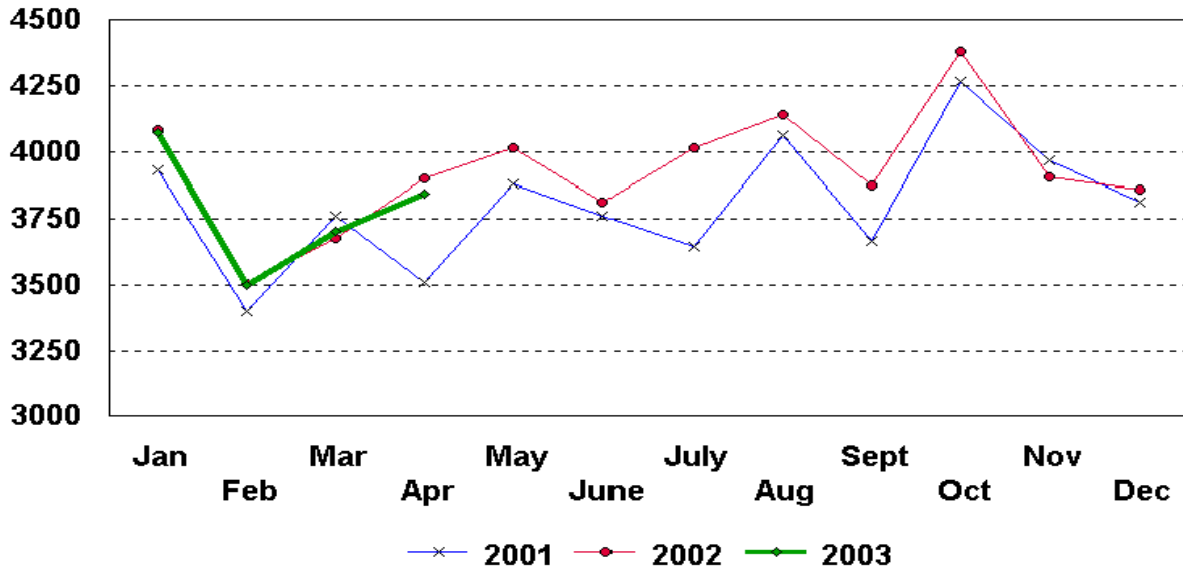
<sup>3</sup> States with no data printed are still included in the US total. Data not printed to avoid disclosing individual operations.

**Federally Inspected Slaughter: Percent of Total Commercial Slaughter by Species, United States**

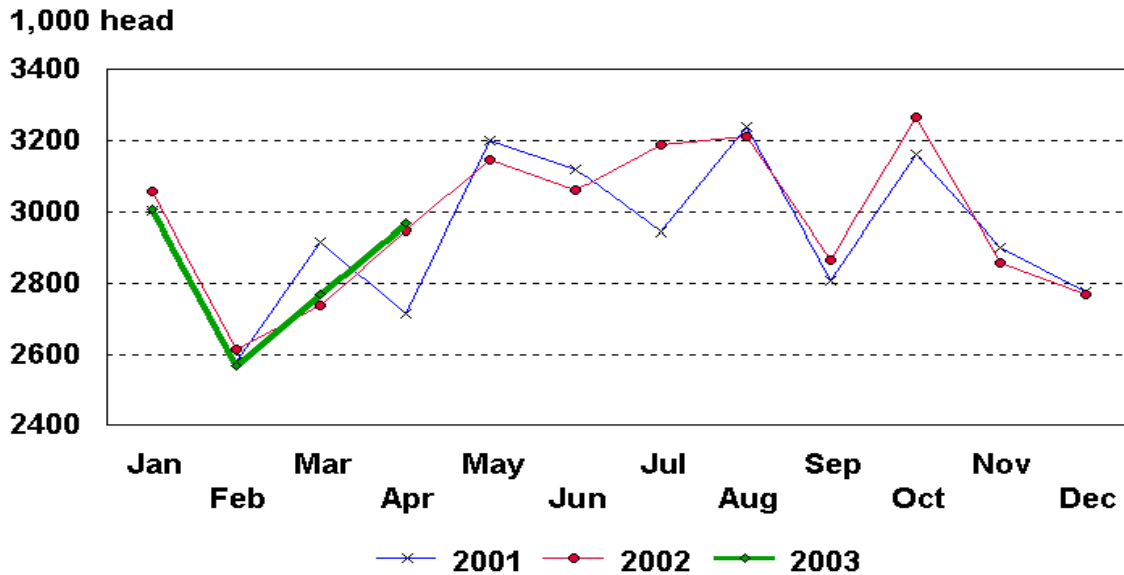
Species	Apr 2002	Mar 2003	Apr 2003	Jan - Apr	
				2002	2003
	<i>Percent</i>	<i>Percent</i>	<i>Percent</i>	<i>Percent</i>	<i>Percent</i>
Cattle	98.3	98.2	98.4	98.2	98.2
Calves	97.5	97.6	97.4	97.5	97.6
Hogs	98.8	98.8	98.8	98.7	98.8
Sheep	94.4	95.2	94.6	94.9	94.8

## U.S. Monthly Commercial Red Meat Production

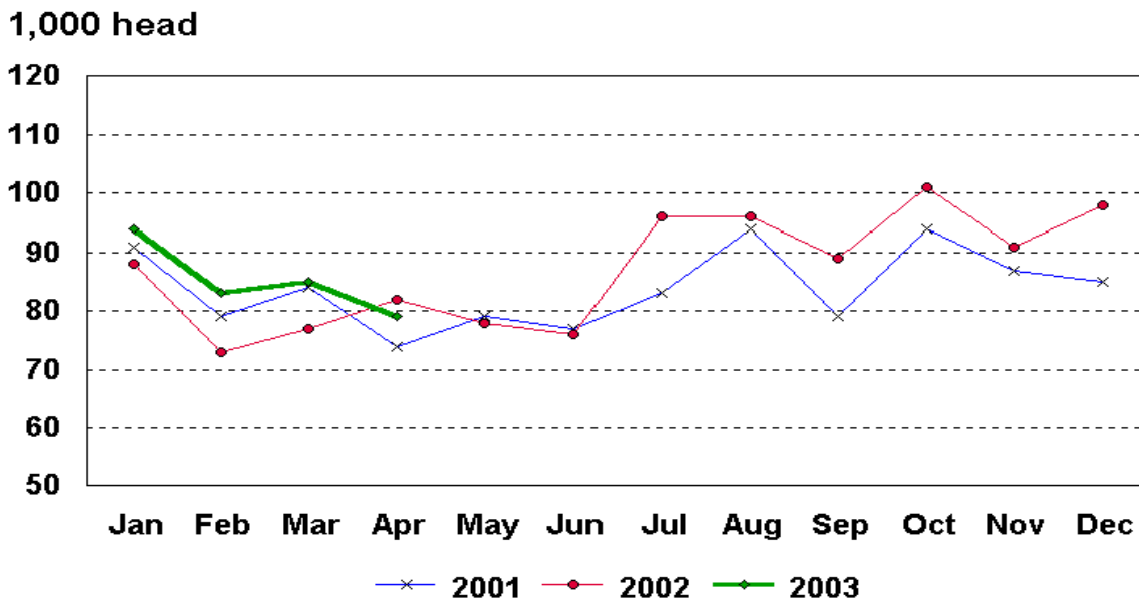
Million Pounds



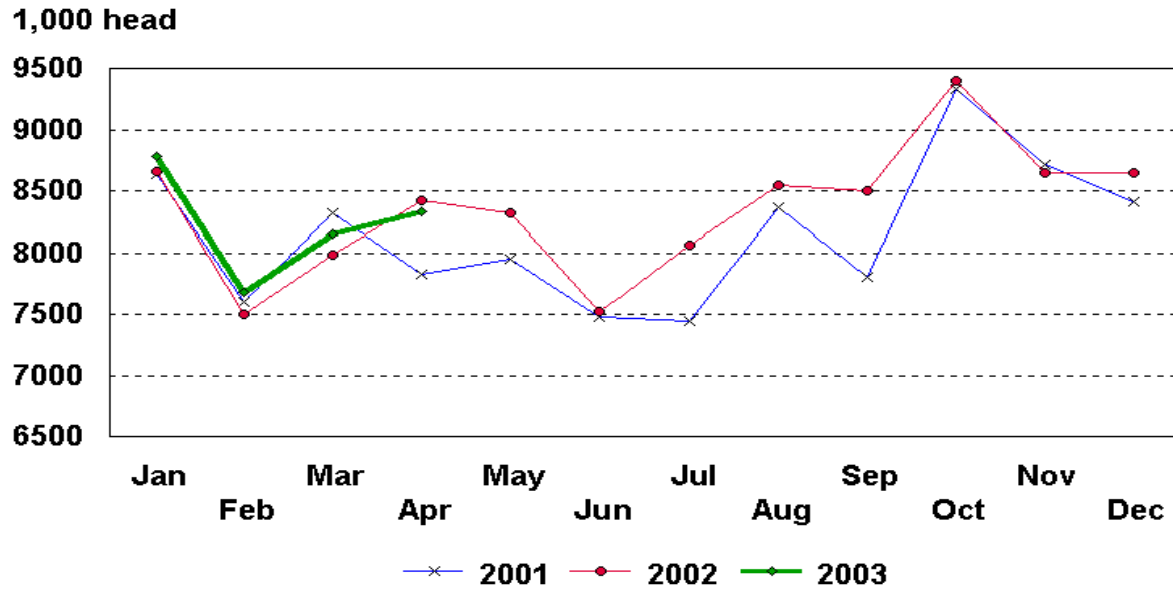
# U.S. Monthly Commercial Slaughter Cattle



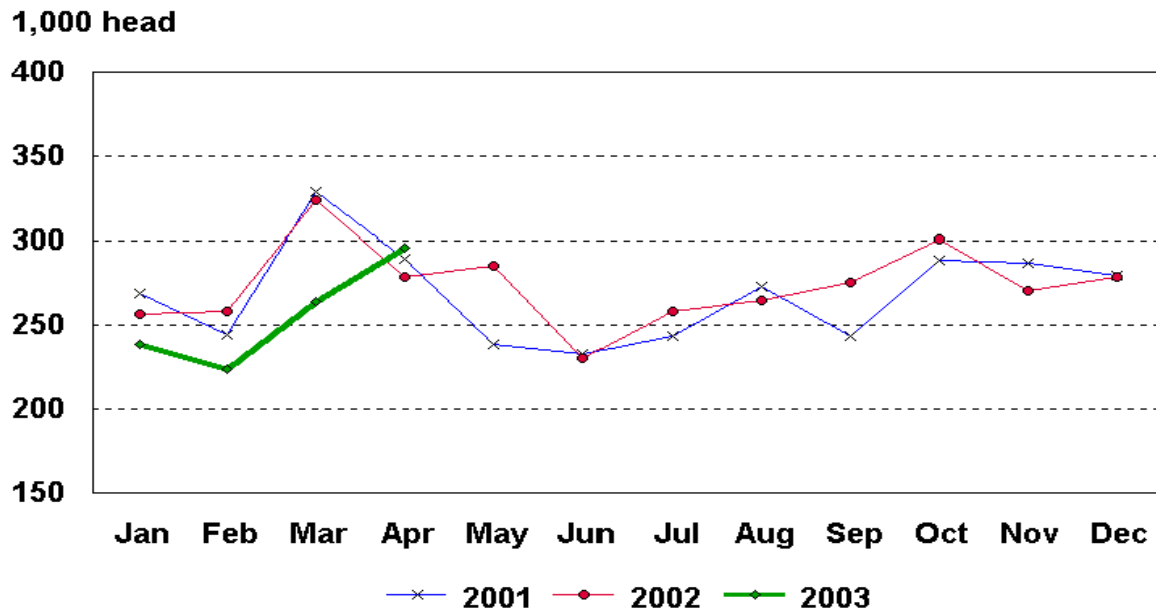
# U.S. Monthly Commercial Slaughter Calves



# U.S. Monthly Commercial Slaughter Hogs

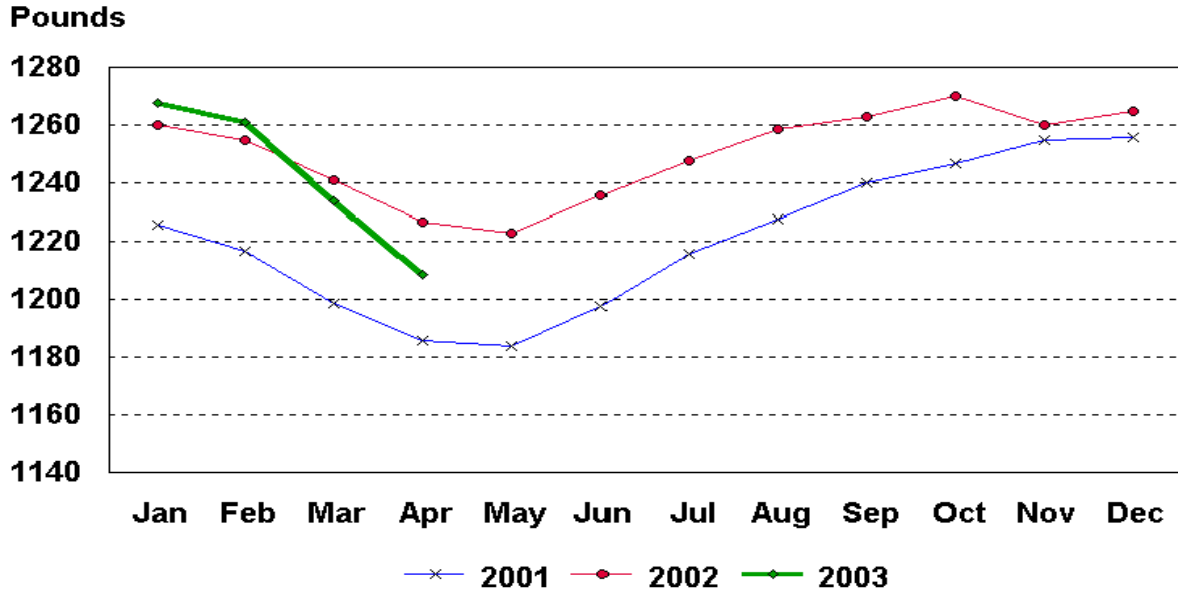


# U.S. Monthly Commercial Slaughter Sheep

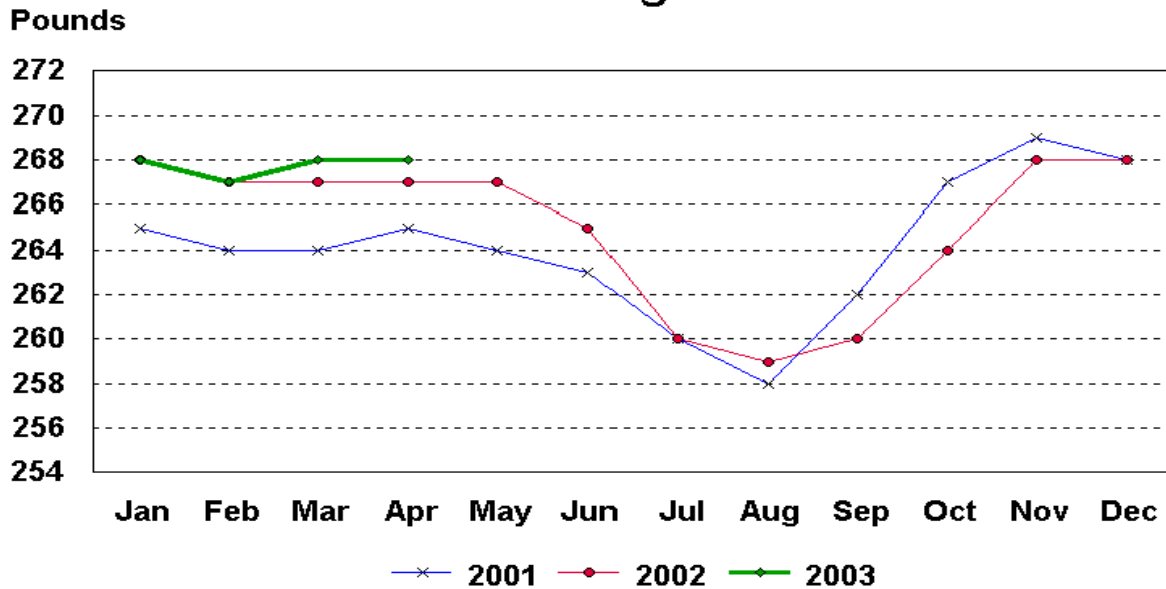




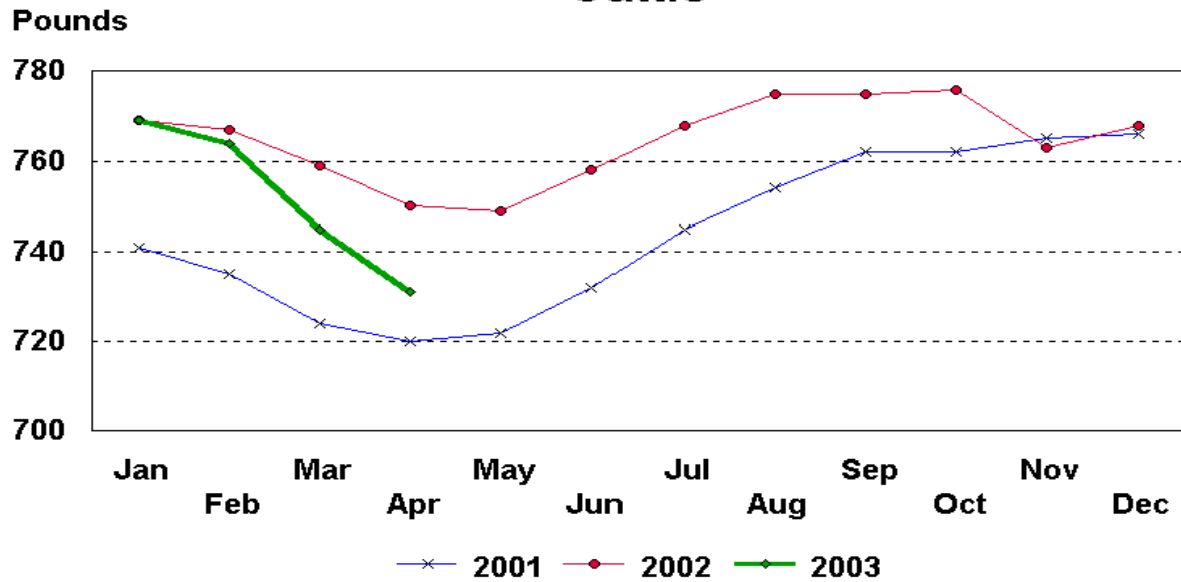
# U.S. Monthly Commercial Slaughter Average Live Weight Cattle



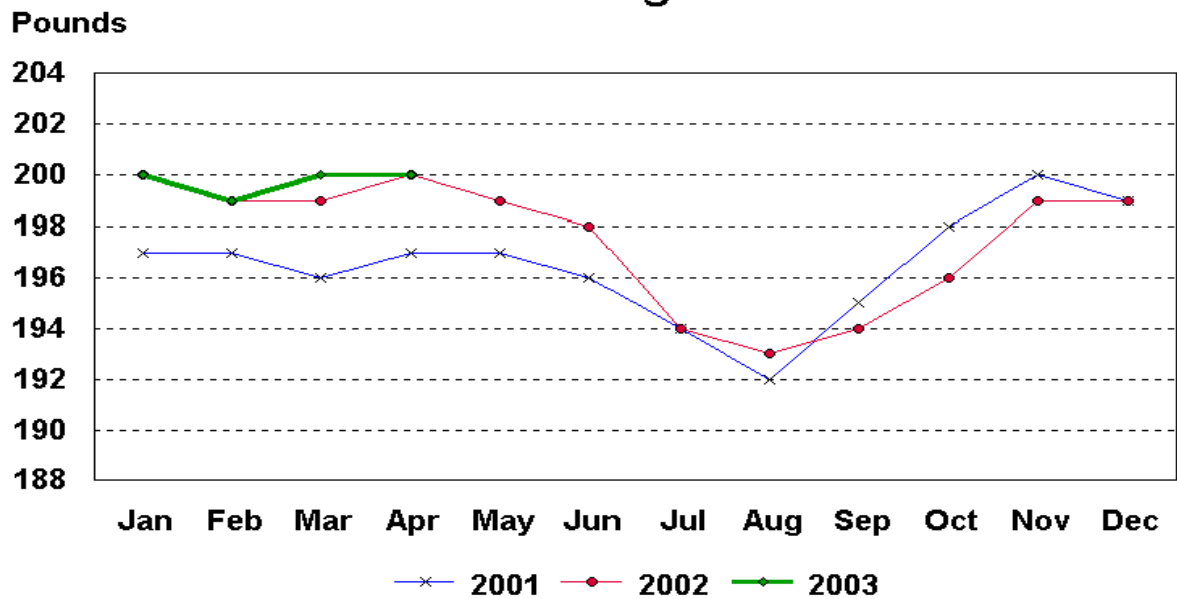
# U.S. Monthly Commercial Slaughter Average Live Weight Hogs



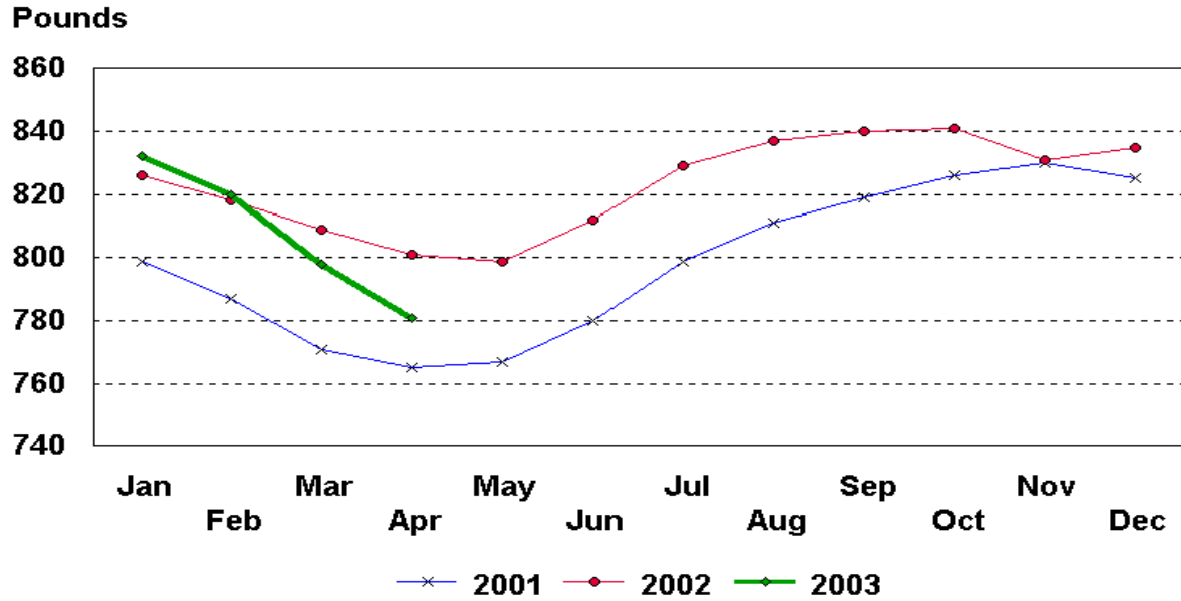
## U.S. Monthly Federally Inspected Average Dressed Weight Cattle



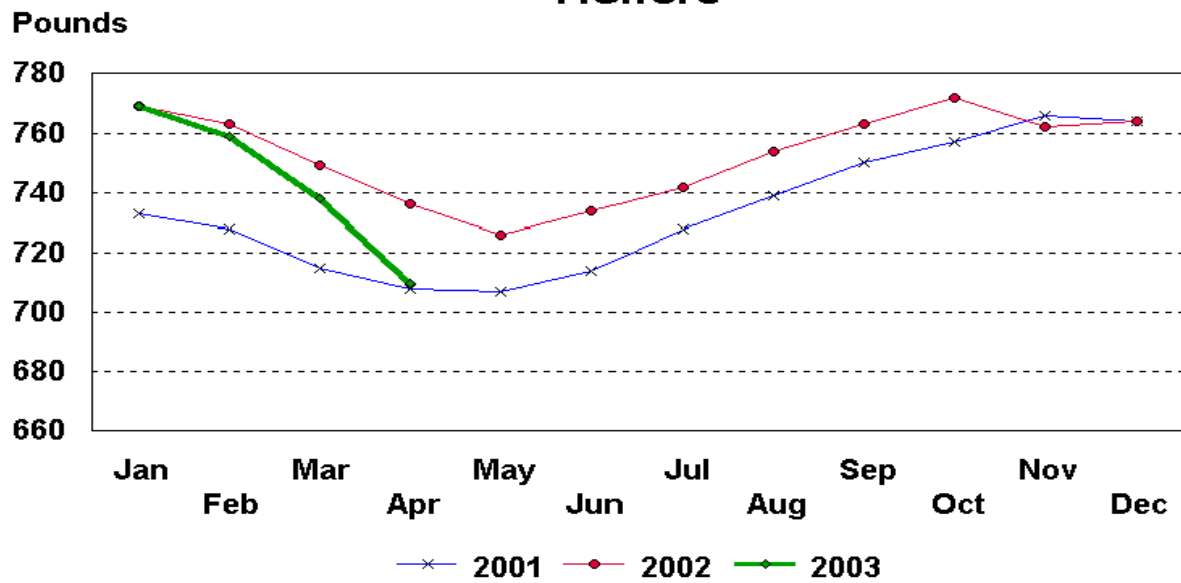
## U.S. Monthly Federally Inspected Average Dressed Weight Hogs



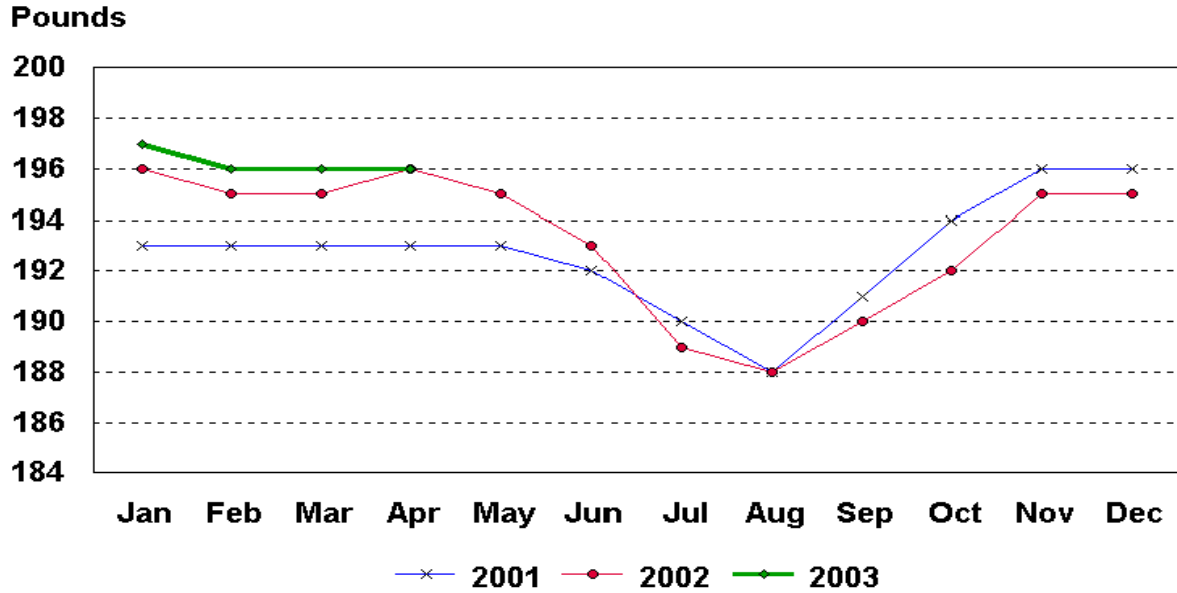
## U.S. Monthly Federally Inspected Average Dressed Weight Steers



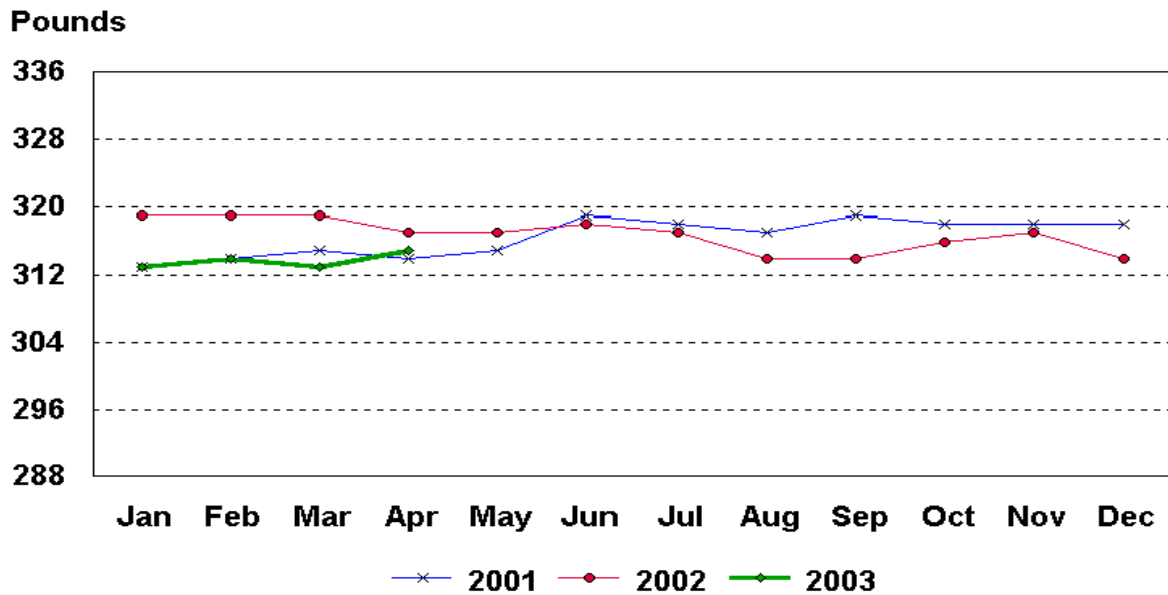
## U.S. Monthly Federally Inspected Average Dressed Weight Heifers



## U.S. Monthly Federally Inspected Average Dressed Weight Barrows and Gilts



## U.S. Monthly Federally Inspected Average Dressed Weight Sows



## Livestock Slaughter Estimates

**Data Sources:** Primary data for the commercial livestock slaughter estimates are obtained from the **Weekly Livestock Slaughter Report** (LS-149) questionnaires completed by inspectors from the Food Safety and Inspection Service (FSIS), USDA, which provide actual counts of animals slaughtered in Federally Inspected (FI) plants. These counts are combined with data from State-administered Non-Federally Inspected (NFI) slaughter plants to derive total commercial slaughter estimates. Over 95 percent of the total U.S. slaughter for any species is under FI. The LS-149 forms collect number of head slaughtered daily under FI by species and class as well as head kill after condemnation and total live and dressed weights.

Slightly under 900 plants in the U.S. are operated under Federal Inspection and over 2,300 plants under State inspection. Slaughter from State-inspected Talmedge-Aiken plants is included in FI totals (see Types of Plants, page 98). To prevent duplication in reporting between NFI and FI plants and assure all FI plants are included, certificates prepared by FSIS identifying operating status are constantly monitored.

**Revision Policy:** Revisions are generally the result of late or corrected data and are less than one-half of 1 percent. Revisions for the previous month and the year-to-date totals are noted in each monthly release by an (\*) or a footnote. Final data are published in the annual summary.

**Procedures and Reliability:** Individual inspectors may be contacted by telephone if the **Weekly Livestock Slaughter Report** questionnaire is not received by NASS in time for summarization. This assures that all plants slaughtering a large number of head or several species are accounted for each week.

All head kill data are tabulated on a weekly basis approximately two weeks after the kill week. A computer edit compares each plant's data with the historical data for that plant. The edit provides a missing reports listing for follow-up telephone contact and imputes missing weight data. In addition, data are checked for unusual values for species, class, head kill, and pattern of kill generally, based on each plant's past operating profile.

Usually, if no form is received by mail, data for plants slaughtering fewer than 50 total head weekly of only one species are imputed. Imputation of live and dressed weight data may also be necessary on partially completed forms for any plant. The imputation is also based on the data history of each respective plant and represents the recent operating characteristics until final data are tabulated. Imputed head kill for missing plants usually is less than 1 percent of the U.S. head kill totals. Imputation for live and dressed weight data for cattle is about 10 percent and for hogs about 3 percent. The imputation for calves and sheep is more frequent and variable.

Head kill for FI slaughter before condemnation is for the actual days of the survey month, while head kill after condemnation and live and dressed weight data are for full weeks only. Average live and dressed weight and dressing percentages by State are compared with the previous week as an additional check. Fluctuations are frequently the result of plants permanently or temporarily closing and a shift in the kind of animal reported.

FI data are summarized weekly and accumulated to a monthly total for this release, while NFI data are summarized monthly only. These weekly totals are published by USDA's Agricultural Marketing Service (AMS) in **Livestock, Meat, Wool Market News**, Weekly Summary, and Statistics.

Livestock slaughter estimates are based on a census of operating plants, and, therefore, have no sampling error. However, they may be subject to errors such as omissions, duplications and mistakes in reporting, recording and processing the data. These errors are minimized through rigid quality controls in the edit and summarization process, and a careful review of all reported data for consistency and reasonableness.

Generally, no data are published if less than three plants operate for a species in a State or if one plant has 60 percent or more of the total commercial slaughter for a species. These data are included in U.S. totals. A review of the reported data is made annually.

### **Types of Plants**

There are generally **four types** of slaughtering plants.

- (1) **Federally Inspected (FI) Plants:** Plants that transport meat interstate must employ federal inspectors to assure compliance with USDA standards. Any State whose commercial plants operate entirely under federal inspection may still have custom-exempt establishments for which NFI estimates are made.
- (2) **Talmedge-Aiken (TA) Plants:** Slaughter plants in which USDA is responsible for inspection. However, federal inspection is carried out by State employees. These plants are considered to be federally inspected.
- (3) **Non-Federally Inspected (NFI) Plants:** Plants which sell and transport only intrastate. State inspectors assure compliance with individual State standards for these NFI plants. Mobile slaughtering units are excluded and are considered farm slaughter.
- (4) **Custom-Exempt Plants:** Plants that do not sell meat but operate on a custom basis only are custom-exempt. The animals and meat are not inspected, but the facilities must meet health standards. These are considered NFI plants and head kill is included in NFI totals.

## Terms and Definitions

**Commercial Production:** Includes slaughter and meat production in federally inspected and other plants, but excludes animals slaughtered on farms.

**Dressed Weight:** The weight of a chilled animal carcass. Beef with kidney knob in; veal with hide off; lamb and mutton with pluck out; pork with leaf fat and kidneys out, jowls on and head off.

**Dressing Percent:** Is usually expressed as a percentage yield of chilled carcass in relation to the weight of the live animal on hoof. For example, a live hog that weighed 200 pounds on hoof and yielded a carcass weighing 140 pounds would have a dressing percentage of 70.

**Food and Meat Inspection:** Includes examination, checking, or testing of a carcass and/or meat against established government standards and involves checking the facility for cleanliness, health of animals, or parts of animals and quality of the meat produced.

**Live Weight:** The gross weight of a live animal when received at the slaughter plant.

**Plant, Slaughter:** An establishment where animals are killed and butchered.

**Red Meat:** Red meat production is the carcass weight after slaughter including beef, veal, pork, and lamb and mutton. It is derived using the number of head times average dressed weight for FI and NFI separately. FI head kill must be adjusted for condemnations using the factor derived from the FSIS inspection reports.

The FI meat production formula is  $(\text{FI head kill}) \times (1 - \text{condemnation factor}) \times (\text{average dressed weight}) = \text{FI red meat production}$ . The condemnation factor is the number of animals condemned as a percentage of the total kill. It has been fairly stable for the last five years; running about 1.90 head per 100 head for calves, .5 per 100 for cattle, .40 per 100 for hogs and .20 per 100 for sheep. The NFI meat production formula is  $(\text{NFI head kill}) \times (\text{live weight}) \times (\text{FI dressing percentage}) = \text{NFI red meat production}$ .

**Slaughter:** Killing and butchering of animals primarily for food.

**Slaughter, Farm:** Animals slaughtered on farms primarily for home consumption. Excludes custom slaughter for farmers at commercial establishments, but includes mobile slaughtering on farms. These estimates appear only in the annual slaughter release.

**Wholesome Meat Act:** Legislation that specifies that all meat produced for sale in the U.S. must be inspected; and further, meat that is transported interstate must be inspected in compliance with federal (USDA) standards.

## Index

	Page
Commercial Calf Slaughter, Number, Total, and Average Live weight, by State and U.S. ....	6
Commercial Cattle Slaughter, Number, Total, and Average Live weight, by State and U.S. ....	5
Commercial Hog Slaughter, Number, Total and Average Live weight, by State and U.S. ....	7
Commercial Red Meat Production, by State and U.S. ....	4
Commercial Sheep and Lamb Slaughter, Number, Total, and Average Live weight, by State and U.S. ....	8
Data Sources, Revision Policy, and Procedures and Reliability ....	21
Federally Inspected Classification of Number and Average Dressed Weight, by Species and Class and U.S. ....	9
Federally Inspected Number by Species and Class, by Regions and U.S. ....	10
Federally Inspected Number by Species and Class, by State and U.S. ....	12
Federally Inspected Percent of Total Commercial, by Species, U.S. ....	14
Livestock Slaughter, Number and Average Weights, by Species and Type of Slaughter, U.S. ....	3
Red Meat Production, Commercial and FI, by Class, U.S ....	2
Terms and Definitions ....	23
Types of Plants ....	22



The next "Livestock Slaughter" report will be released at 8:30 a.m. on June 20, 2003.

The United States Department of Agriculture (USDA) prohibits discrimination in all its programs on the basis of race, color, national origin, gender, religion, age, disability, political beliefs, sexual orientation, and marital or family status. (Not all prohibited bases apply to all programs.) Persons with disabilities who require alternative means for communication of program information (braille, large print, audiotape, etc.) should contact the USDA's TARGET Center at 202-720-2600 (voice and TDD).

To file a complaint of discrimination, write USDA, Director, Office of Civil Rights, Room 326-W, Whitten Building, 1400 Independence Avenue, SW, Washington, D.C., 20250-9410, or call 202-720-5964 (voice or TDD). USDA is an equal opportunity provider and employer.

## **ACCESS TO REPORTS!!**

---

For your convenience, there are several ways to obtain NASS reports, data products, and services:

### **INTERNET ACCESS**

All NASS reports are available free of charge on the worldwide Internet. For access, connect to the Internet and go to the NASS Home Page at: <http://www.usda.gov/nass/>. Select "Today's Reports" or Publications and then Reports Calendar or Publications and then Search, by Title or Subject.

### **E-MAIL SUBSCRIPTION**

All NASS reports are available by subscription free of charge direct to your e-mail address. Starting with the NASS Home Page at <http://www.usda.gov/nass/>, click on **Publications**, then click on the **Subscribe by E-mail** button which takes you to the page describing e-mail delivery of reports. Finally, click on **Go to the Subscription Page** and follow the instructions.

### **AUTOFAX ACCESS**

NASSFax service is available for some reports from your fax machine. Please call 202-720-2000, using the handset attached to your fax. Respond to the voice prompts. Document 0411 is a list of available reports.

-----

### **PRINTED REPORTS OR DATA PRODUCTS**

**CALL OUR TOLL-FREE ORDER DESK: 800-999-6779 (U.S. and Canada)**  
**Other areas, please call 703-605-6220      FAX: 703-605-6900**  
**(Visa, MasterCard, check, or money order acceptable for payment.)**

-----

### **ASSISTANCE**

For **assistance** with general agricultural statistics or further information about NASS or its products or services, contact the **Agricultural Statistics Hotline** at **800-727-9540**, 7:30 a.m. to 4:00 p.m. ET, or e-mail: [nass@nass.usda.gov](mailto:nass@nass.usda.gov).

---