



Livestock Slaughter

Released June 20, 2003, by the National Agricultural Statistics Service (NASS), Agricultural Statistics Board, U.S. Department of Agriculture. For information on "Livestock Slaughter" call Liana Cuffman at (515) 284-4340, office hours 8:00 a.m. to 4:30 p.m. CT.

Monthly Record High for Beef Production

Commercial red meat production for the United States totaled 3.94 billion pounds in May, down 2 percent from the 4.02 billion pounds produced in May 2002.

May 2002 contained 23 weekdays (including one holiday) and 4 Saturdays.
May 2003 contained 22 weekdays (including one holiday) and 5 Saturdays.

Beef production, at 2.36 billion pounds, was 1 percent above the previous year and a monthly record high for May. Cattle slaughter totaled 3.25 million head, up 3 percent from May 2002. The average live weight was 1,208 pounds, down 15 pounds from May a year ago.

Veal production totaled 15.8 million pounds, 2 percent above May a year ago. Calf slaughter totaled 76,300 head, down 2 percent from May 2002. The average live weight was 343 pounds, up 13 pounds from May a year ago.

Pork production totaled 1.55 billion pounds, down 6 percent from the previous year. Hog kill totaled 7.81 million head, 6 percent below May 2002. The average live weight was 267 pounds, unchanged from May a year ago.

Lamb and mutton production, at 15.2 million pounds, was down 22 percent from May 2002. Sheep slaughter totaled 221,900 head, 22 percent below last year. The average live weight was 137 pounds, unchanged from May a year ago.

January to May red meat production was 19.07 billion pounds, down 1 percent from 2002. Accumulated beef production was down 1 percent from last year, veal was up 5 percent, pork was unchanged from last year, and lamb and mutton production was down 13 percent.

Commercial Red Meat Production: United States ¹

Class	May 2002	Apr 2003	May 2003	May 03 % of		Jan - May ²		
				May 2002	Apr 2003	2002	2003	03 as % of 02
	<i>Million Pounds</i>	<i>Million Pounds</i>	<i>Million Pounds</i>	<i>Percent</i>	<i>Percent</i>	<i>Million Pounds</i>	<i>Million Pounds</i>	<i>Percent</i>
Beef	2,336	2,153	2,363	101	110	10,908	10,803	99
Veal	15.5	16.0	15.8	102	98	77.9	82.0	105
Pork	1,646	1,657	1,550	94	94	8,099	8,097	100
Lamb & Mutton	19.5	19.4	15.2	78	78	96.3	83.7	87
Total Red Meat	4,017	3,846	3,943	98	103	19,181	19,066	99

¹ Based on packers' dressed weights and excludes farm slaughter.

² Accumulated totals and percentages based on unrounded data.

Federally Inspected Red Meat Production: United States ¹

Class	May 2002	Apr 2003	May 2003	May 03 % of		Jan - May ²		
				May 2002	Apr 2003	2002	2003	03 as % of 02
	<i>Million Pounds</i>	<i>Million Pounds</i>	<i>Million Pounds</i>	<i>Percent</i>	<i>Percent</i>	<i>Million Pounds</i>	<i>Million Pounds</i>	<i>Percent</i>
Beef	2,306	2,123	2,334	101	110	10,750	10,648	99
Veal	15.0	15.5	15.3	102	99	75.5	79.5	105
Pork	1,628	1,640	1,532	94	93	8,008	8,009	100
Lamb & Mutton	18.6	18.6	14.5	78	78	92.7	80.4	87
Total Red Meat	3,968	3,797	3,896	98	103	18,927	18,817	99

¹ Based on packers' dressed weights and excludes farm slaughter.

² Accumulated totals and percentages based on unrounded data.

Livestock Slaughter: Number and Average Weights, United States ¹

Species	Unit	May 2002	Apr 2003	May 2003	May 03 % of		Jan - May ²		
					May 2002	Apr 2003	2002	2003	03 % of 02
					<i>Percent</i>	<i>Percent</i>			<i>Prct</i>
Cattle No.									
Fed. Insp.	Thou	3,097.9	*2,917.6	3,201.1	103	110	14,247.7	14,312.6	100
Other	Thou	48.7	48.6	47.2	97	97	257.9	253.6	98
Comm'l. ³	Thou	3,146.6	*2,966.3	3,248.4	103	110	14,505.6	14,566.2	100
Live Wt/Hd									
Fed. Insp.	Lbs	1,225	1,211	1,210	99	100	1,243	1,237	100
Other	Lbs	1,074	1,095	1,094	102	100	1,085	1,095	101
Comm'l.	Lbs	1,223	1,209	1,208	99	100	1,241	1,235	100
Calves No.									
Fed. Insp.	Thou	76.1	77.2	74.4	98	96	388.7	407.4	105
Other	Thou	1.9	2.1	1.9	103	93	9.7	10.1	103
Comm'l. ³	Thou	78.0	79.3	76.3	98	96	398.4	417.5	105
Live Wt/Hd									
Fed. Insp.	Lbs	329	335	341	104	102	324	324	100
Other	Lbs	411	421	418	102	99	416	418	101
Comm'l.	Lbs	330	336	343	104	102	326	327	100
Hogs No.									
Fed. Insp.	Thou	8,215.2	8,230.2	7,705.1	94	94	40,366.6	40,248.7	100
Other	Thou	107.8	103.3	104.3	97	101	530.1	514.1	97
Comm'l. ³	Thou	8,323.1	8,333.5	7,809.4	94	94	40,896.7	40,762.8	100
Live Wt/Hd									
Fed. Insp.	Lbs	267	268	268	100	100	268	268	100
Other	Lbs	230	233	228	99	98	235	235	100
Comm'l.	Lbs	267	268	267	100	100	267	267	100
Sheep&Lambs No.									
Fed. Insp.	Thou	267.3	279.6	208.6	78	75	1,329.5	1,178.0	89
Other	Thou	18.5	15.9	13.3	72	83	75.4	66.6	88
Comm'l. ³	Thou	285.7	295.6	221.9	78	75	1,404.8	1,244.5	89
Live Wt/Hd									
Fed. Insp.	Lbs	139	133	139	100	104	140	136	97
Other	Lbs	96	*98	107	111	109	99	103	104
Comm'l.	Lbs	137	*131	137	100	105	138	134	98

* Revised.

¹ Excludes slaughter on farms.

² Accumulated totals and percentages based on unrounded data.

³ Totals may not equal sum of the parts due to rounding.

Commercial Red Meat Production: By State and United States ¹

State	May 2002	Apr 2003	May 2003	May 03 as % of ²	
				May 2002	Apr 2003
	<i>Million Pounds</i>	<i>Million Pounds</i>	<i>Million Pounds</i>	<i>Percent</i>	<i>Percent</i>
AL	4.3	3.6	3.3	77	93
AK					
AZ	39.4	39.0	38.9	99	100
AR	5.6	4.7	5.1	91	108
CA	118.9	119.5	122.6	103	103
CO	183.7	154.5	187.8	102	122
DE-MD	3.0	2.6	2.7	90	102
FL	6.0	6.0	5.6	93	93
GA	22.8	23.6	23.8	104	101
HI	1.0	0.9	0.9	93	100
ID	50.9	47.3	51.7	102	109
IL	218.5	209.6	208.2	95	99
IN	118.6	120.6	109.5	92	91
IA	523.6	*523.8	492.7	94	94
KS	509.8	454.6	503.9	99	111
KY	35.4	34.8	32.7	92	94
LA	1.3	1.3	1.1	89	90
MI	36.7	34.1	34.0	93	100
MN	189.5	189.1	183.2	97	97
MS	24.0	26.3	23.1	96	88
MO	35.9	39.0	36.6	102	94
MT	1.1	1.3	1.1	104	89
NE	637.6	599.0	639.4	100	107
NV	0.1	0.1	0.1	97	128
N ENG ³	1.6	1.5	1.5	92	101
NJ	5.1	4.6	4.7	93	103
NM	0.9	1.0	1.0	115	96
NY	3.4	3.7	3.5	103	94
NC	175.1	183.3	168.0	96	92
ND	3.0	2.5	2.6	87	103
OH	25.2	26.1	26.8	106	103
OK	76.3	86.4	79.9	105	92
OR	3.7	3.7	3.4	94	93
PA	105.2	110.6	102.5	97	93
SC	21.2	21.3	20.7	98	97
SD	77.3	76.7	80.4	104	105
TN	18.4	18.9	16.0	87	85
TX	453.8	401.0	455.4	100	114
UT	44.5	41.4	38.6	87	93
VA	70.0	62.1	58.6	84	94
WA	52.5	52.2	58.4	111	112
WV	0.4	0.5	0.3	79	65
WI	112.1	*112.0	112.3	100	100
WY	0.4	0.5	0.4	113	90
US	4,017.3	3,845.5	3,943.1	98	103

* Revised.

¹ Includes total beef, veal, pork, lamb, and mutton.

² Percentages based on unrounded data.

³ N ENG includes CT, ME, MA, NH, RI, and VT.

**Commercial Cattle Slaughter: By State and United States,
May 2002 and 2003 ¹**

State	Number Slaughtered		Total Live Weight		Average Live Weight	
	2002	2003	2002	2003	2002	2003
	<i>1,000 Head</i>	<i>1,000 Head</i>	<i>1,000 Pounds</i>	<i>1,000 Pounds</i>	<i>Pounds</i>	<i>Pounds</i>
AL	0.6	0.7	464	596	834	824
AK						
AZ	50.7	49.5	66,180	66,293	1,305	1,338
AR	1.4	1.2	1,220	1,037	878	852
CA	110.9	118.6	145,538	153,078	1,312	1,291
CO	228.1	247.8	278,419	293,696	1,221	1,185
DE-MD	3.2	3.1	4,039	3,905	1,276	1,262
FL	8.4	8.3	9,422	9,067	1,120	1,088
GA	31.8	35.3	39,828	42,858	1,254	1,215
HI	1.0	0.9	991	956	1,019	1,030
ID	68.1	68.6	82,659	85,213	1,213	1,243
IL	75.2	96.5	91,172	116,223	1,213	1,204
IN	3.0	2.6	3,165	2,705	1,053	1,058
IA	59.6	63.8	74,125	77,284	1,244	1,211
KS	666.3	668.7	795,706	789,017	1,194	1,180
KY	1.3	1.3	1,106	1,170	869	909
LA	1.4	1.2	1,154	1,043	815	885
MI	39.4	39.2	55,250	52,659	1,402	1,344
MN	62.0	63.3	84,333	85,562	1,361	1,352
MS ²						
MO	7.7	7.6	9,769	9,817	1,268	1,285
MT	1.4	1.4	1,564	1,630	1,157	1,157
NE	683.6	720.4	854,481	877,034	1,250	1,217
NV	0.1	0.1	116	122	977	1,007
N ENG ³	1.6	1.6	1,764	1,726	1,091	1,071
NJ	2.4	2.3	2,748	2,598	1,160	1,151
NM	1.7	2.1	1,513	1,906	904	926
NY	4.1	4.3	4,654	4,861	1,136	1,133
NC	16.1	17.8	17,399	19,320	1,078	1,085
ND	1.2	1.1	1,379	1,259	1,167	1,131
OH	11.5	11.7	12,844	13,413	1,121	1,142
OK	3.6	2.5	3,694	2,590	1,013	1,031
OR	1.4	1.2	1,796	1,341	1,245	1,095
PA	89.6	86.0	114,463	108,202	1,278	1,258
SC						
SD						
TN	1.2	1.1	1,045	977	890	892
TX	613.4	618.6	714,559	724,664	1,165	1,172
UT	59.2	52.0	69,871	60,618	1,181	1,165
VA	0.9	0.9	916	911	981	1,008
WA	71.0	79.0	85,849	95,376	1,209	1,208
WV	0.5	0.4	496	433	1,031	982
WI	133.9	137.8	178,735	178,932	1,335	1,298
WY	0.5	0.6	593	664	1,171	1,160
US ⁴	3,146.6	3,248.4	3,847,942	3,922,833	1,223	1,208

¹ Includes slaughter under Federal inspection and other Commercial slaughter, excludes farm slaughter.

² Data not printed to avoid disclosing individual operations.

³ N ENG includes CT, ME, MA, NH, RI, and VT.

⁴ Accumulated totals and percentages based on unrounded data. States with no data printed are still included in the US total.

**Commercial Calf Slaughter: By State and United States,
May 2002 and 2003 ¹**

State	Number Slaughtered		Total Live Weight		Average Live Weight	
	2002	2003	2002	2003	2002	2003
	<i>1,000 Head</i>	<i>1,000 Head</i>	<i>1,000 Pounds</i>	<i>1,000 Pounds</i>	<i>Pounds</i>	<i>Pounds</i>
AL						
AK						
AZ						
AR						
CA	10.1	10.8	1,436	1,990	143	185
CO						
DE-MD	0.1	0.1	44	30	337	333
FL						
GA						
HI						
ID						
IL	8.3	7.7	3,594	3,210	432	419
IN	2.4	0.4	809	47	343	118
IA						
KS						
KY						
LA	0.7	0.7	358	370	507	504
MI	3.7	2.1	1,653	917	447	442
MN						
MS ²						
MO						
MT						
NE						
NV						
N ENG ³	1.6	1.8	224	254	139	139
NJ	9.5	8.7	4,264	3,947	450	453
NM						
NY	11.4	8.6	1,043	912	92	106
NC	0.1	0.1	55	53	379	459
ND						
OH	0.1	5.3	18	2,141	282	405
OK	0.1	0.1	36	36	397	412
OR						
PA	13.8	14.0	5,262	5,263	382	377
SC						
SD						
TN	0.1	0.1	51	57	518	543
TX	0.8	1.5	412	883	542	583
UT						
VA						
WA						
WV						
WI	13.2	11.9	5,967	5,439	452	456
WY						
US ⁴	78.0	76.3	25,745	26,130	330	343

¹ Includes slaughter under Federal inspection and other Commercial slaughter, excludes farm slaughter.

² Data not printed to avoid disclosing individual operations.

³ N ENG includes CT, ME, MA, NH, RI, and VT.

⁴ Accumulated totals and percentages based on unrounded data. States with no data printed are still included in the US total.

**Commercial Hog Slaughter: By State and United States,
May 2002 and 2003 ¹**

State	Number Slaughtered		Total Live Weight		Average Live Weight	
	2002	2003	2002	2003	2002	2003
	<i>1,000 Head</i>	<i>1,000 Head</i>	<i>1,000 Pounds</i>	<i>1,000 Pounds</i>	<i>Pounds</i>	<i>Pounds</i>
AL	11.8	9.0	6,270	4,596	533	513
AK		0.1		12		224
AZ	0.6	0.6	138	154	238	260
AR						
CA	203.9	199.5	48,757	47,974	239	240
CO	1.1	0.9	244	251	217	269
DE-MD	1.2	1.1	304	303	254	267
FL	8.7	7.4	1,671	1,304	192	177
GA	13.3	11.9	3,351	2,874	253	241
HI	2.8	2.5	600	526	216	213
ID						
IL	772.8	643.0	212,241	178,620	275	278
IN	589.0	549.2	153,663	142,784	261	260
IA	2,389.0	2,225.5	640,563	597,052	268	268
KS	15.5	22.3	5,416	8,125	350	364
KY	175.3	161.2	46,301	42,850	264	266
LA	2.1	1.7	441	350	205	202
MI	10.0	9.5	3,721	3,614	371	379
MN	737.7	706.2	193,794	185,166	263	262
MS ²						
MO	160.7	165.0				
MT	0.9	1.0	213	239	241	245
NE	567.3	521.7	150,068	138,507	265	265
NV						
N ENG ³	2.3	2.0	647	513	283	259
NJ	8.8	8.3	826	824	94	100
NM	0.1	0.1	21	28	212	214
NY	2.7	2.6	513	599	193	230
NC	868.4	825.5	220,007	209,581	253	254
ND	14.0	12.5	3,177	2,855	226	229
OH	97.3	96.2	25,861	25,934	266	270
OK	357.7	371.5	99,466	104,810	278	282
OR	16.0	16.0	4,135	4,146	258	259
PA	217.1	219.3	52,260	54,482	241	248
SC						
SD	359.4	374.4	93,882	98,183	261	262
TN	55.5	48.2	26,692	23,222	481	481
TX	33.8	30.6	9,833	8,268	291	270
UT	5.4	3.9	953	850	176	216
VA	353.8	298.3	92,158	77,126	260	259
WA	1.6	1.6	404	395	252	254
WV	0.6	0.5	138	119	242	221
WI	42.2	45.1	18,680	20,664	442	458
WY	0.2	0.3	60	71	261	256
US ⁴	8,323.1	7,809.4	2,218,700	2,088,018	267	267

¹ Includes slaughter under Federal inspection and other Commercial slaughter, excludes farm slaughter.

² Data not printed to avoid disclosing individual operations.

³ N ENG includes CT, ME, MA, NH, RI, and VT.

⁴ Accumulated totals and percentages based on unrounded data. States with no data printed are still included in the US total.

**Commercial Sheep and Lamb Slaughter: By State and United States,
May 2002 and 2003 ¹**

State	Number Slaughtered		Total Live Weight		Average Live Weight	
	2002	2003	2002	2003	2002	2003
	<i>1,000 Head</i>	<i>1,000 Head</i>	<i>1,000 Pounds</i>	<i>1,000 Pounds</i>	<i>Pounds</i>	<i>Pounds</i>
AL						
AK						
AZ	0.1	0.2	10	22	123	145
AR						
CA						
CO						
DE-MD	4.2	2.3	467	266	111	117
FL						
GA	0.7	0.5	72	49	103	90
HI						
ID	0.3	0.3	39	37	118	115
IL	19.6	14.8	2,586	2,165	132	147
IN	3.7	2.8	405	297	108	107
IA	38.0	25.1	5,640	4,038	148	161
KS	0.1	0.2	14	14	117	86
KY	1.0	1.0	139	133	140	137
LA	0.2	0.2	14	13	91	83
MI	16.8	14.5	1,984	1,728	118	119
MN	0.1	0.2	18	20	121	123
MS ²						
MO	0.6	0.5	65	47	105	104
MT	0.1	0.2	13	21	124	129
NE	0.1	0.1	9	9	114	122
NV	0.2	0.1	22	14	125	99
N ENG ³	2.3	1.6	245	175	105	107
NJ	11.3	9.8	1,024	927	90	94
NM	2.9	2.0	322	207	112	103
NY	3.2	2.5	250	222	78	89
NC						
ND						
OH	2.0	1.3	194	146	100	114
OK	0.1	0.1	17	13	137	117
OR	0.9	1.1	128	148	140	135
PA	6.1	6.5	596	682	98	105
SC						
SD	1.0	1.1	112	131	107	119
TN	0.4	0.5	29	42	74	79
TX	30.0	27.6	3,789	3,548	126	129
UT	2.7	2.6	345	313	127	121
VA						
WA	0.9	0.7	103	86	116	121
WV						
WI	1.0	1.0	130	132	136	131
WY	0.1	0.1	10	12	129	133
US ⁴	285.7	221.9	39,199	30,432	137	137

¹ Includes slaughter under Federal inspection and other Commercial slaughter, excludes farm slaughter.

² Data not printed to avoid disclosing individual operations.

³ N ENG includes CT, ME, MA, NH, RI, and VT.

⁴ Accumulated totals and percentages based on unrounded data. States with no data printed are still included in the US total.

**Classification of Livestock Slaughtered Under Federal Inspection:
United States**

Item	May 2002	Apr 2003	May 2003	Jan - May ¹		May 2002	Apr 2003	May 2003	Jan - May ¹	
				2002	2003				2002	2003
	<i>1,000 Head</i>	<i>1,000 Head</i>	<i>1,000 Head</i>	<i>1,000 Head</i>	<i>1,000 Head</i>	<i>Percent of Total</i>	<i>Percent of Total</i>	<i>Percent of Total</i>	<i>Percent of Total</i>	<i>Percent of Total</i>
Class ²										
Cattle										
Steers	1,615	1,497	1,664	7,028	7,051	52.1	51.3	52.0	49.3	49.3
Heifers	973	877	997	4,703	4,547	31.4	30.1	31.1	33.0	31.8
All Cows	457	492	485	2,268	2,465	14.7	16.9	15.1	15.9	17.2
Dairy Cows	202	239	222	1,058	1,202	6.5	8.2	6.9	7.4	8.4
Other Cows	255	253	263	1,210	1,263	8.2	8.7	8.2	8.5	8.8
Bulls & Stags	53	51	55	248	250	1.7	1.8	1.7	1.7	1.7
Total ¹	3,098	2,918	3,201	14,248	14,313	100.0	100.0	100.0	100.0	100.0
Hogs										
Barrows & Gilts	7,920	7,947	7,418	38,986	38,860	96.4	96.6	96.3	96.6	96.5
Sows	271	262	266	1,264	1,284	3.3	3.2	3.5	3.1	3.2
Stags & Boars	24	21	21	116	105	0.3	0.3	0.3	0.3	0.3
Total ¹	8,215	8,230	7,705	40,367	40,249	100.0	100.0	100.0	100.0	100.0
Sheep										
Mature Sheep	14	12	11	58	54	5.2	4.3	5.3	4.4	4.6
Lambs & Yrlngs	253	268	198	1,271	1,124	94.8	95.7	94.7	95.6	95.4
Total ¹	267	280	209	1,329	1,178	100.0	100.0	100.0	100.0	100.0
Average Dressed Weight ³										
	<i>Pounds</i>	<i>Pounds</i>	<i>Pounds</i>	<i>Pounds</i>	<i>Pounds</i>					
Cattle	749	731	733	758	748					
Steers ⁴	799	781	781	810	801					
Heifers ⁴	726	710	708	748	736					
All Cows ⁴	595	598	594	602	598					
Bulls & Stags ⁴	931	919	925	922	925					
Calves & Vealers	202	205	210	199	199					
Hogs	199	200	200	199	200					
Barrow Gilts ⁵	195	196	195	195	196					
Sows ⁵	317	315	315	318	314					
Stags & Boars ⁵	238	241	245	228	238					
Sheep	69	67	69	70	68					
Mature Sheep ⁶	64	65	64	64	64					
Lamb & Yrlngs ⁶	70	67	70	70	69					

¹ Total and percentages based on unrounded data.

² Species totals and classification reported by meat inspectors, Inspection Operations, FSIS.

³ Based on packer reports.

⁴ Included in cattle average dressed weight.

⁵ Included in hog average dressed weight.

⁶ Included in sheep average dressed weight.

**Federally Inspected Slaughter: By Region and United States,
May 2003¹**

Standard Federal Regions	Cattle							Calves
	Total ²	Steers	Heifers	Cows			Bulls & Stags	Total
				All	Dairy	Other		
	<i>1,000 Head</i>	<i>1,000 Head</i>	<i>1,000 Head</i>	<i>1,000 Head</i>	<i>1,000 Head</i>	<i>1,000 Head</i>	<i>1,000 Head</i>	<i>1,000 Head</i>
1	1.4	0.3	0.2	0.8	0.7		0.2	1.8
2	6.3	1.6	0.3	4.0	3.2	0.8	0.5	17.3
3	89.1	38.0	7.8	39.2	29.4	9.9	4.1	14.1
4	74.9	1.2	0.3	62.0	19.6	42.5	11.4	1.5
5	332.8	143.5	48.5	131.0	85.6	45.4	9.9	27.1
6	618.6	309.4	220.5	75.3	9.5	65.8	13.4	1.2
7	1,451.6	844.2	538.2	63.5	1.2	62.4	5.6	
8	311.2	163.5	130.9	14.6	3.8	10.8	2.2	
9	168.2	87.1	9.4	67.1	56.4	10.7	4.5	10.4
10	147.0	75.6	40.7	27.3	12.4	15.0	3.3	0.8
US ²	3,201.1	1,664.4	996.8	484.8	221.6	263.2	55.1	74.4
	Hogs				Sheep			
	Total ²	Barrows & Gilts	Sows	Stags & Boars	Total ²	Mature Sheep	Lambs & Yearlings	
	<i>1,000 Head</i>	<i>1,000 Head</i>	<i>1,000 Head</i>	<i>1,000 Head</i>	<i>1,000 Head</i>	<i>1,000 Head</i>	<i>1,000 Head</i>	
1	1.7	1.6			1.6	0.5	1.0	
2	10.7	10.3	0.2	0.1	11.4	1.3	10.0	
3	518.1	516.5	1.5		9.0	0.7	8.3	
4	1,222.6	1,152.7	68.2	1.8	2.3	1.0	1.3	
5	2,007.4	1,892.3	111.7	3.4	30.6	3.3	27.3	
6	404.9	386.5	18.1	0.3	25.2	1.4	23.7	
7	2,926.3	2,855.9	55.4	15.1	25.6		25.5	
8	389.0	378.2	10.7		62.3	1.9	60.3	
9	195.0	194.9	0.1		39.2	0.5	38.7	
10	29.4	29.2	0.2		1.7	0.4	1.4	
US ²	7,705.1	7,418.2	266.1	20.8	208.6	11.1	197.6	

¹ States included in regions are as follows: 1- CT, ME, NH, VT, MA, & RI; 2- NY & NJ; 3- DE-MD, PA, WV, & VA; 4- AL, FL, GA, KY, MS, NC, SC, & TN; 5- IL, IN, MI, MN, OH, & WI; 6- AR, LA, NM, OK, & TX; 7- IA, KS, MO, & NE; 8- CO, MT, ND, SD, UT, & WY; 9- AZ, CA, HI & NV; 10- AK, ID, OR, & WA.

² Totals may not add due to rounding.

**Federally Inspected Slaughter: By Region and United States,
January - May 2003 * ¹**

Standard Federal Regions	Cattle							Calves
	Total ²	Steers	Heifers	Cows			Bulls & Stags	Total
				All	Dairy	Other		
	<i>1,000 Head</i>	<i>1,000 Head</i>	<i>1,000 Head</i>	<i>1,000 Head</i>	<i>1,000 Head</i>	<i>1,000 Head</i>	<i>1,000 Head</i>	<i>1,000 Head</i>
1	7.1	1.3	0.9	4.1	3.9	0.2	0.9	11.0
2	32.2	7.7	1.7	20.5	16.5	4.0	2.3	99.3
3	455.9	192.5	33.4	215.8	161.0	54.8	14.2	76.1
4	358.5	9.2	1.6	297.3	100.2	197.1	50.3	10.0
5	1,589.1	626.3	201.2	715.0	464.9	250.1	46.5	142.3
6	2,631.8	1,337.9	906.7	326.9	56.6	270.3	60.3	8.0
7	6,427.5	3,529.4	2,545.6	323.4	8.6	314.9	29.1	0.2
8	1,352.4	644.4	624.1	73.6	19.4	54.2	10.3	
9	799.3	390.1	42.8	348.8	307.2	41.6	17.6	55.5
10	658.9	312.2	189.2	139.1	63.3	75.8	18.3	5.0
US ²	14,312.6	7,051.1	4,547.2	2,464.5	1,201.5	1,263.0	249.8	407.4
	Hogs				Sheep			
	Total ²	Barrows & Gilts	Sows	Stags & Boars	Total ²	Mature Sheep	Lambs & Yearlings	
	<i>1,000 Head</i>	<i>1,000 Head</i>	<i>1,000 Head</i>	<i>1,000 Head</i>	<i>1,000 Head</i>	<i>1,000 Head</i>	<i>1,000 Head</i>	
1	7.4	7.3	0.1	0.1	8.9	2.0	6.9	
2	49.5	48.2	0.9	0.3	57.7	7.3	50.3	
3	2,655.1	2,647.0	7.9	0.1	48.4	3.2	45.2	
4	6,500.0	6,121.7	371.1	7.1	10.1	4.4	5.6	
5	10,451.7	9,935.0	501.1	15.7	157.5	14.4	143.1	
6	2,065.5	1,955.5	104.8	5.2	159.2	9.1	150.1	
7	15,461.8	15,139.8	245.8	76.2	169.8	0.1	169.7	
8	1,941.0	1,890.1	50.8	0.1	325.5	9.7	315.9	
9	967.5	967.1	0.3	0.1	232.7	2.1	230.6	
10	149.2	148.2	0.9	0.1	8.3	1.6	6.7	
US ²	40,248.7	38,859.9	1,283.7	105.1	1,178.0	54.0	1,124.0	

* Accumulated totals based on unrounded data.

¹ States included in regions are as follows: 1- CT, ME, NH, VT, MA, & RI; 2- NY & NJ; 3- DE-MD, PA, WV, & VA; 4- AL, FL, GA, KY, MS, NC, SC, & TN; 5- IL, IN, MI, MN, OH, & WI; 6- AR, LA, NM, OK, & TX; 7- IA, KS, MO, & NE; 8- CO, MT, ND, SD, UT, & WY; 9- AZ, CA, HI & NV; 10- AK, ID, OR, & WA.

² Totals may not add due to rounding.

**Federally Inspected Slaughter: By State and United States,
May 2003**

State	Cattle							Calves
	Total ¹	Steers	Heifers	Cows			Bulls & Stags	Total
				All	Dairy	Other		
	<i>1,000 Head</i>	<i>1,000 Head</i>	<i>1,000 Head</i>	<i>1,000 Head</i>	<i>1,000 Head</i>	<i>1,000 Head</i>	<i>1,000 Head</i>	<i>1,000 Head</i>
AL								
AK								
AZ	49.0	36.6	0.5	11.9	11.9			
AR	0.6	0.2	0.1	0.3		0.3	0.1	
CA	118.2	50.2	8.8	54.8	44.5	10.3	4.4	10.4
CO	247.3	137.4	109.2	0.5	0.5		0.1	
DE-MD	3.1	2.1	0.6	0.3	0.3			0.1
FL	8.3	0.3		7.4	1.2	6.2	0.6	
GA	34.5	0.1		30.6	0.3	30.3	3.8	
HI	0.9	0.3	0.2	0.4		0.4	0.1	
ID	67.1	30.8	14.1	19.5	7.5	12.0	2.6	
IL	94.2	58.4	35.8					7.7
IN	0.1	0.1						0.4
IA	62.6	39.4	22.9				0.2	
KS	665.5	375.9	288.1	1.4		1.4		
KY	0.6	0.4	0.1	0.1	0.1			
LA								
MI	37.1	24.6	5.6	6.8	6.8		0.1	2.0
MN	61.2	9.7	3.7	41.1	16.5	24.6	6.6	
MS								
MO	5.2	0.8	0.5	3.5	0.6	2.9	0.4	
MT	0.4	0.1	0.1	0.1		0.1	0.1	
NE	718.3	428.1	226.7	58.5	0.5	58.0	4.9	
NV	0.1	0.1						
N ENG ²	1.4	0.3	0.2	0.7	0.7		0.2	1.8
NJ	2.3	1.1	0.1	0.8	0.8		0.2	8.7
NM	1.6			1.6	1.6			
NY	4.1	0.5	0.2	3.1	2.3	0.8	0.3	8.5
NC	17.3	0.1	0.1	12.4	6.7	5.7	4.8	0.1
ND								
OH	5.7	0.4	0.2	4.9	4.2	0.7	0.1	5.2
OK	0.7	0.1		0.6	0.3	0.3		
OR	1.0	0.4	0.4	0.1	0.1		0.2	
PA	85.7	35.8	7.1	38.8	29.0	9.8	4.0	14.0
SC								
SD								
TN	0.7	0.2	0.1	0.4	0.2	0.2	0.1	0.1
TX	615.6	309.2	220.4	72.7	7.6	65.1	13.3	1.2
UT	51.2	25.8	21.5	3.6	1.7	1.9	0.4	
VA	0.3	0.1	0.1	0.1		0.1		
WA	78.9	44.4	26.2	7.7	4.8	2.9	0.5	
WV								
WI	134.5	50.2	3.2	78.1	58.0	20.1	3.0	11.9
WY								
US ³	3,201.1	1,664.4	996.8	484.8	221.6	263.2	55.1	74.4

¹ Totals may not add due to rounding.

² N ENG includes CT, ME, MA, NH, RI, and VT.

³ States with no data printed are still included in the US total. Data not printed to avoid disclosing individual operations.

**Federally Inspected Slaughter: By State and United States,
May 2003**

State	Hogs				Sheep		
	Total ¹	Barrows & Gilts	Sows	Stags & Boars	Total ¹	Mature Sheep	Lambs & Yearlings
	<i>1,000 Head</i>	<i>1,000 Head</i>	<i>1,000 Head</i>	<i>1,000 Head</i>	<i>1,000 Head</i>	<i>1,000 Head</i>	<i>1,000 Head</i>
AL	8.2		6.5	1.7			
AK	0.1						
AZ							
AR							
CA	192.4	192.3					
CO	0.5	0.5	0.1				
DE-MD	1.1	1.1			2.3	0.1	2.2
FL	7.4	7.3	0.1				
GA							
HI	2.5	2.4					
ID					0.1		0.1
IL	622.6	565.3	55.3	2.0	14.0	0.1	13.9
IN	545.8	545.8			2.2	1.3	0.9
IA	2,223.6	2,160.6	47.9	15.1	25.0		25.0
KS							
KY	160.7	154.9	5.9		1.0	0.7	0.3
LA							
MI	7.9	3.0	4.9		14.2	1.8	12.4
MN	704.2	704.2			0.1		0.1
MS							
MO					0.4		0.4
MT	0.1	0.1					
NE	520.5	520.5					
NV					0.1		0.1
N ENG ²	1.7	1.6			1.6	0.5	1.0
NJ	8.2	7.9	0.2	0.1	9.8	0.8	9.1
NM					0.1	0.1	
NY	2.4	2.4			1.5	0.5	1.0
NC	812.3	806.2	6.0	0.1			
ND	12.2	12.2					
OH	87.1	74.0	12.3	0.8			
OK	369.7	366.0	3.7				
OR	15.9	15.7	0.1		1.0		1.0
PA	219.0	218.7	0.2		6.5	0.6	5.9
SC							
SD	373.7	363.3	10.5		1.0		1.0
TN	48.1	0.8	47.3		0.5		0.5
TX	23.2	19.1	3.8	0.3	24.9	1.3	23.6
UT	2.4	2.2	0.2		2.3	1.9	0.4
VA	298.0	296.7	1.3				
WA	1.4	1.4			0.6	0.3	0.3
WV							
WI	39.8	0.1	39.2	0.5	0.1		0.1
WY							
US ³	7,705.1	7,418.2	266.1	20.8	208.6	11.1	197.6

¹ Totals may not add due to rounding.

² N ENG includes CT, ME, MA, NH, RI, and VT.

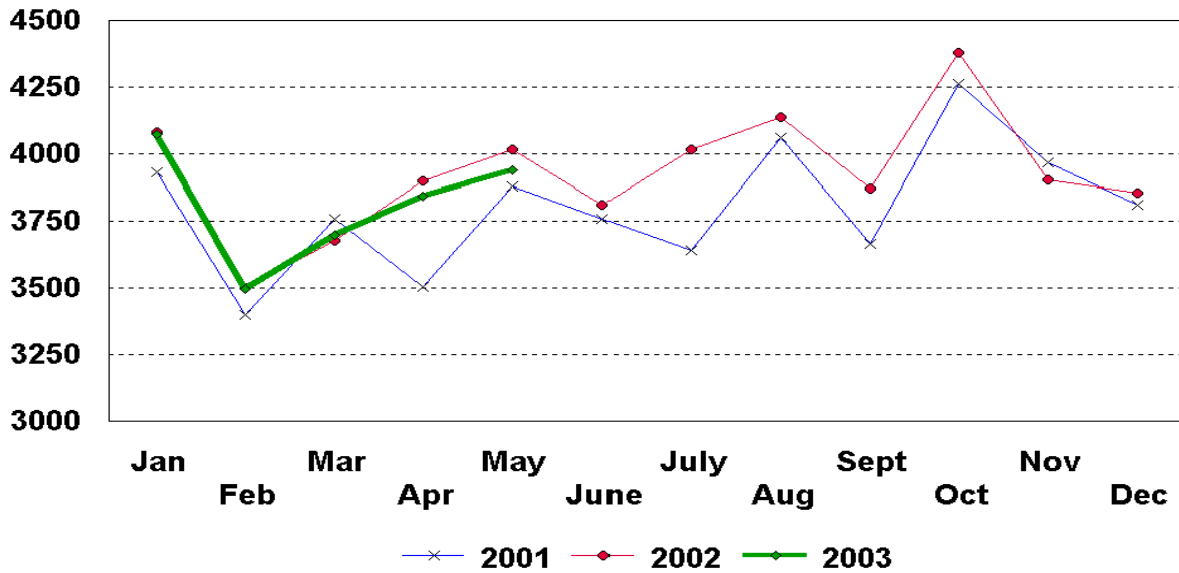
³ States with no data printed are still included in the US total. Data not printed to avoid disclosing individual operations.

Federally Inspected Slaughter: Percent of Total Commercial Slaughter by Species, United States

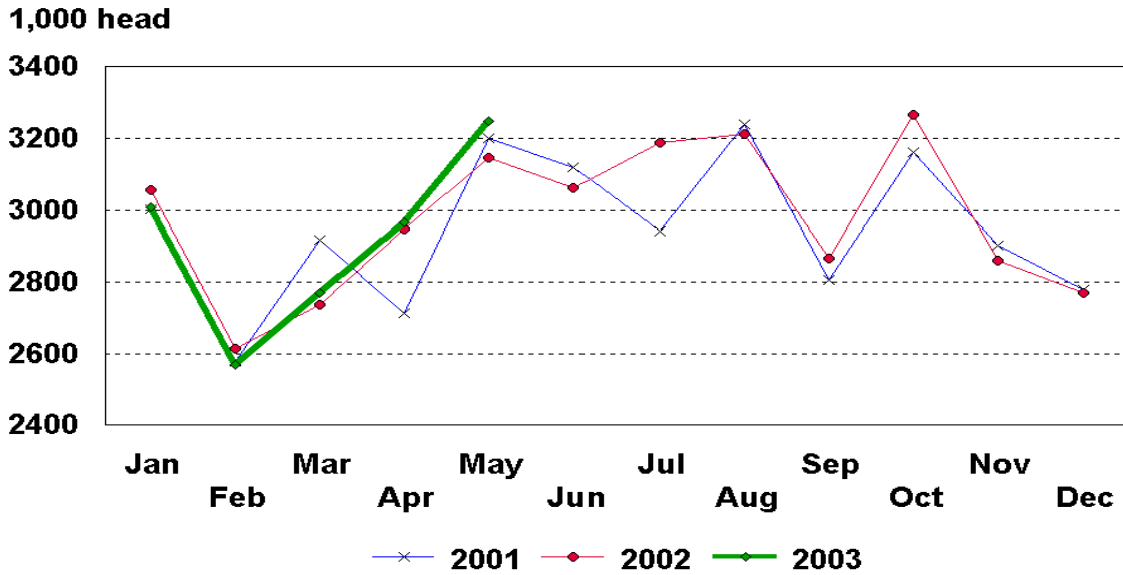
Species	May 2002	Apr 2003	May 2003	Jan - May	
				2002	2003
	<i>Percent</i>	<i>Percent</i>	<i>Percent</i>	<i>Percent</i>	<i>Percent</i>
Cattle	98.5	98.4	98.5	98.2	98.3
Calves	97.6	97.4	97.5	97.6	97.6
Hogs	98.7	98.8	98.7	98.7	98.7
Sheep	93.5	94.6	94.0	94.6	94.7

U.S. Monthly Commercial Red Meat Production

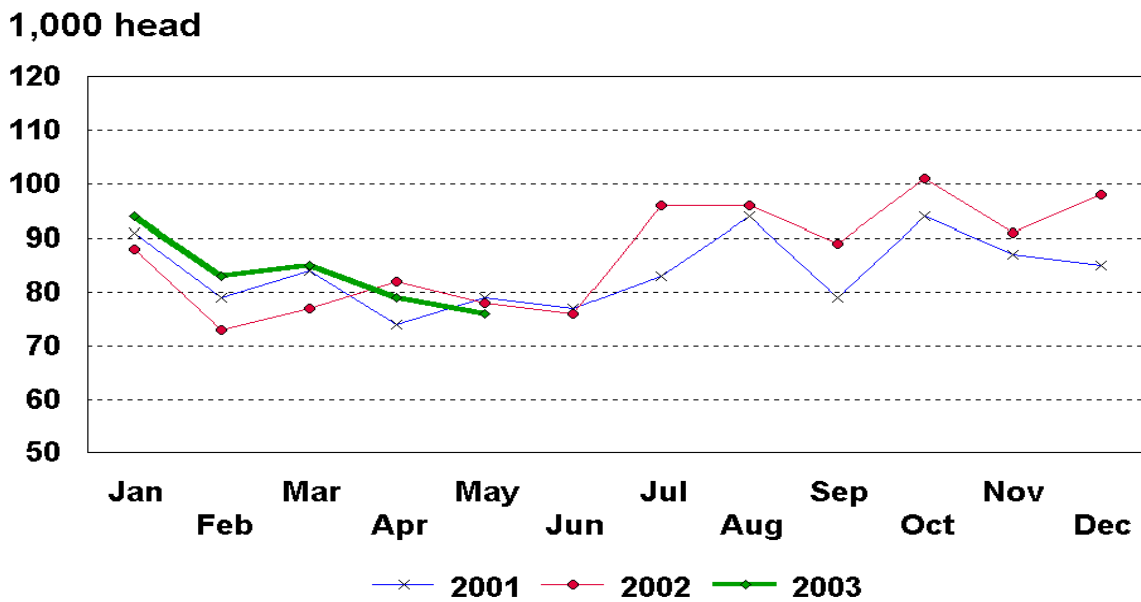
Million Pounds



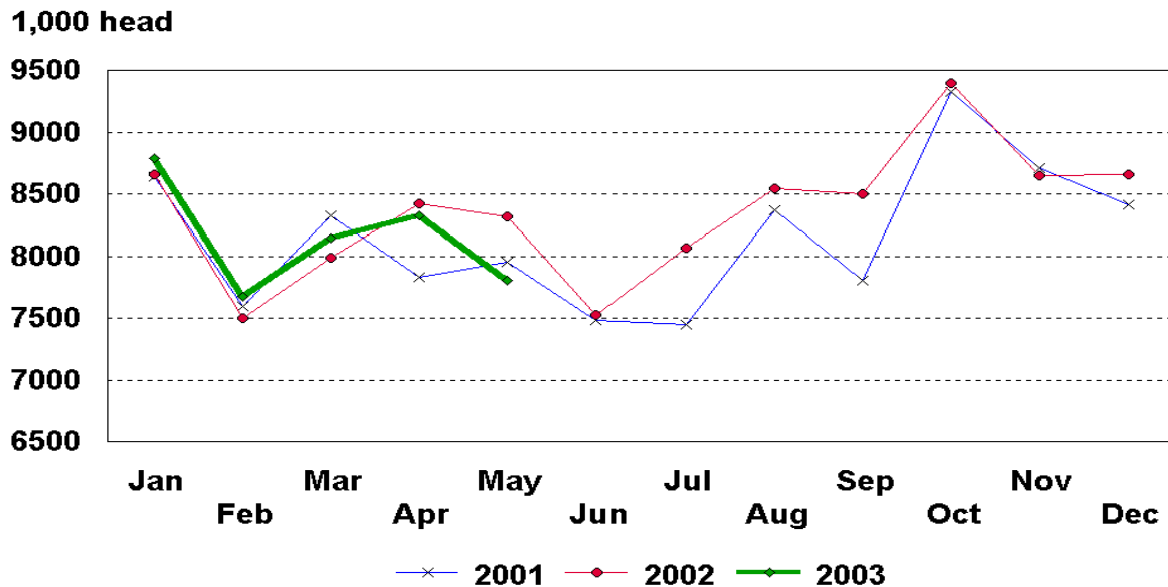
U.S. Monthly Commercial Slaughter Cattle



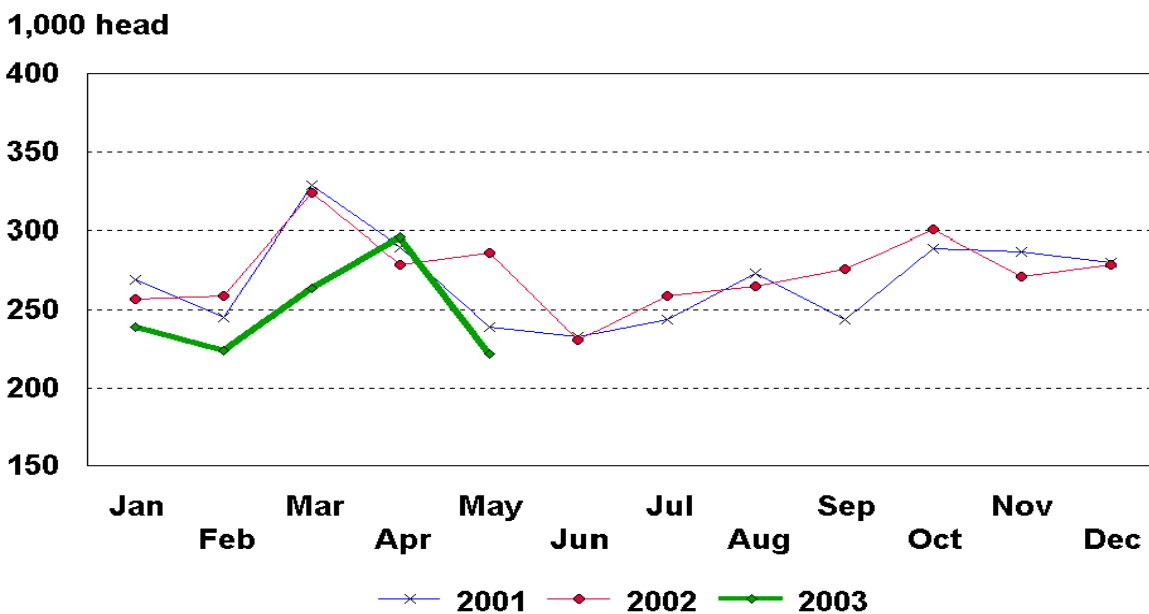
U.S. Monthly Commercial Slaughter Calves



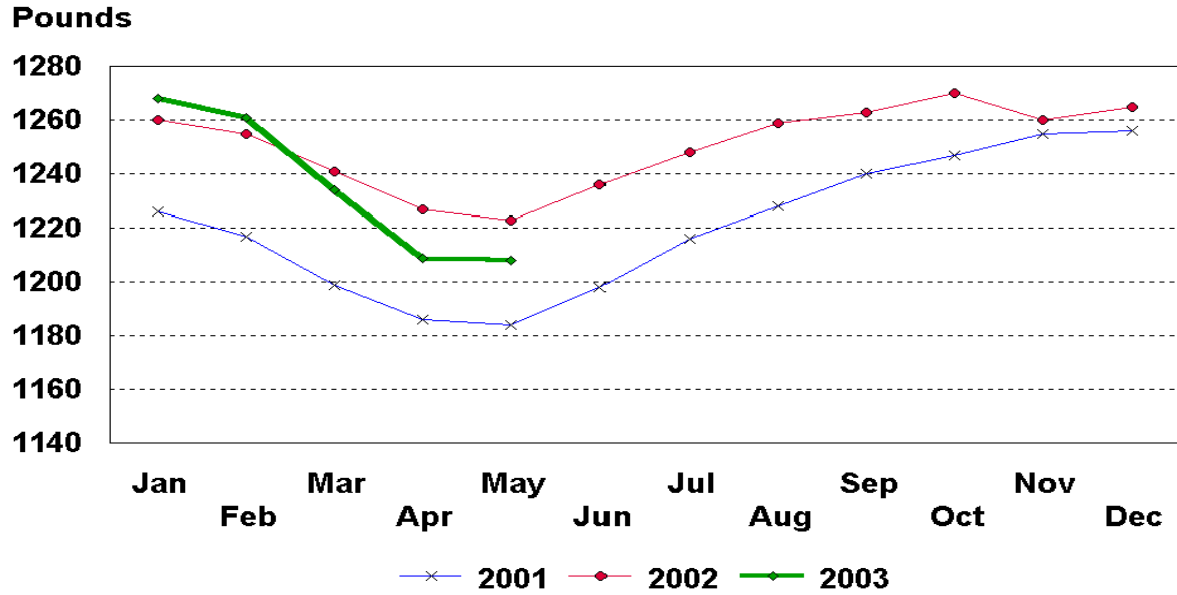
U.S. Monthly Commercial Slaughter Hogs



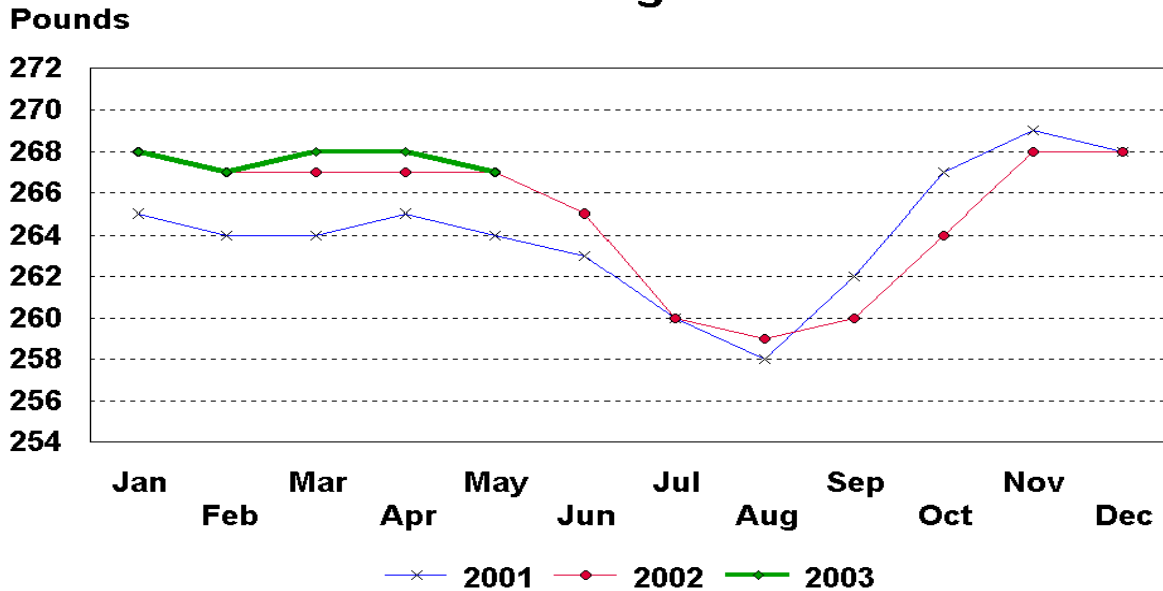
U.S. Monthly Commercial Slaughter Sheep



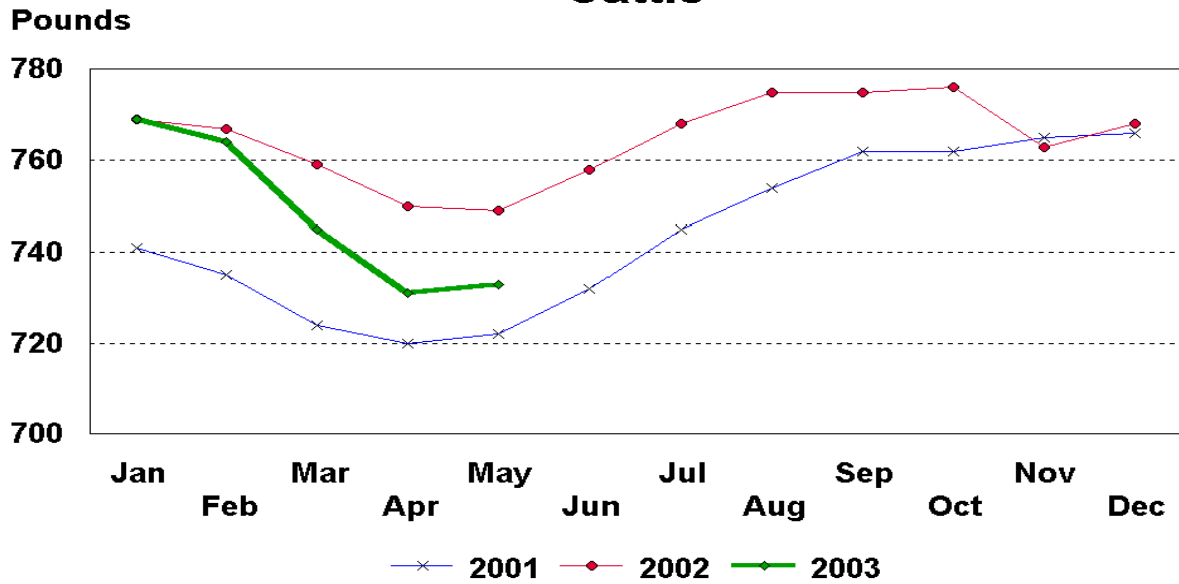
U.S. Monthly Commercial Slaughter Average Live Weight Cattle



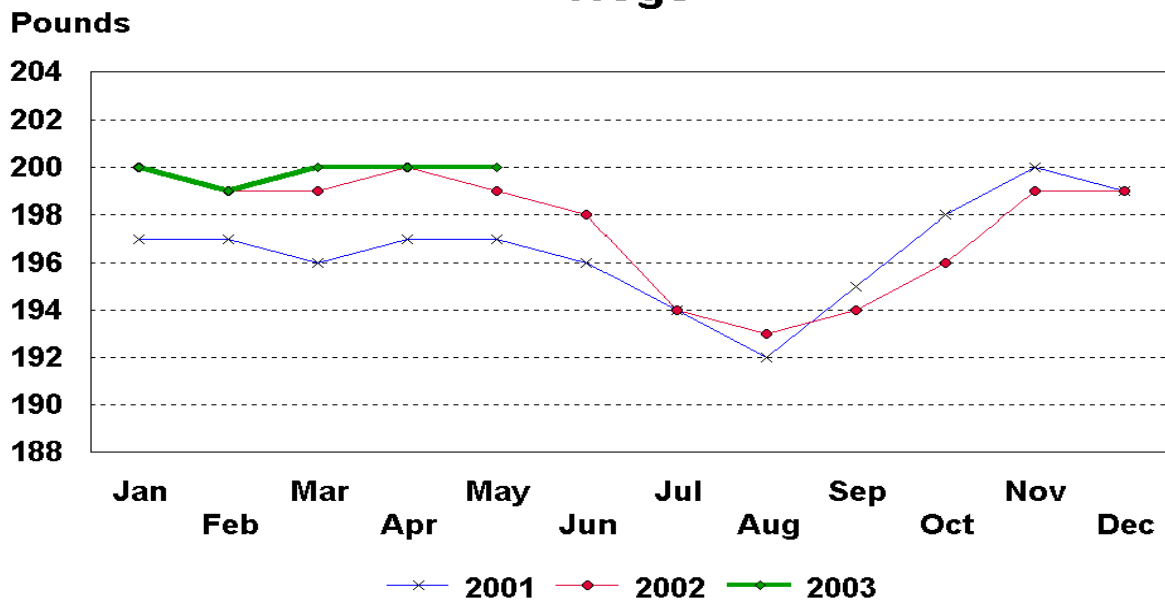
U.S. Monthly Commercial Slaughter Average Live Weight Hogs



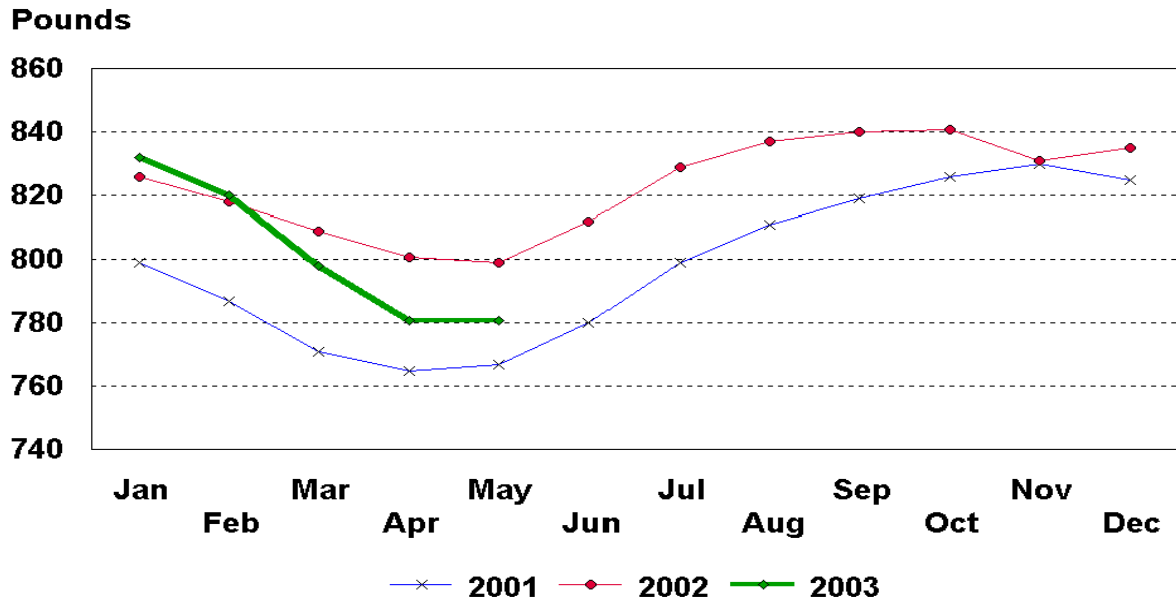
U.S. Monthly Federally Inspected Average Dressed Weight Cattle



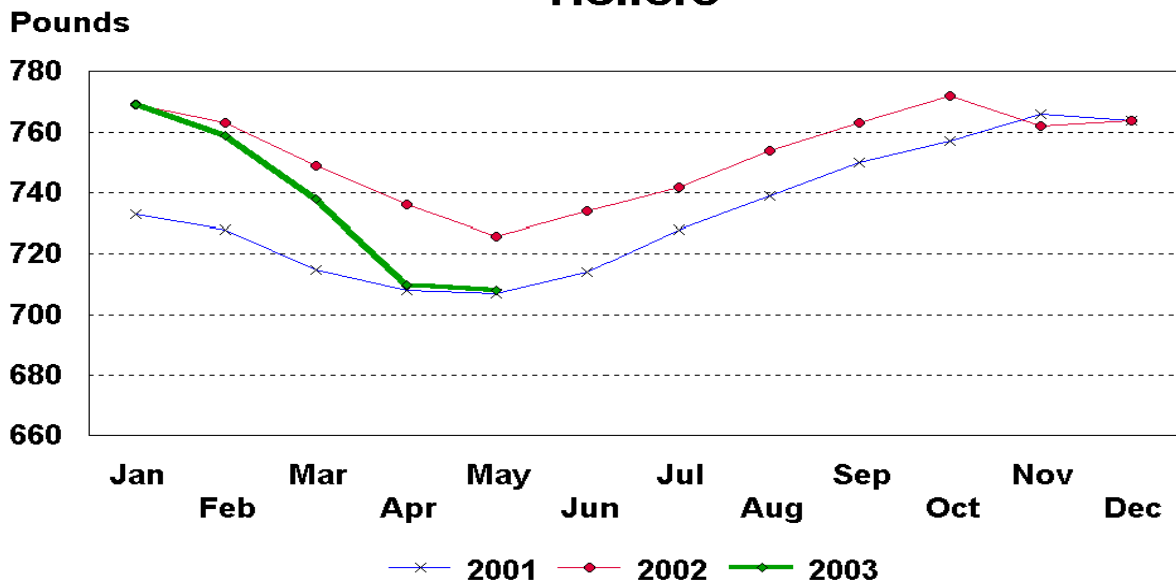
U.S. Monthly Federally Inspected Average Dressed Weight Hogs



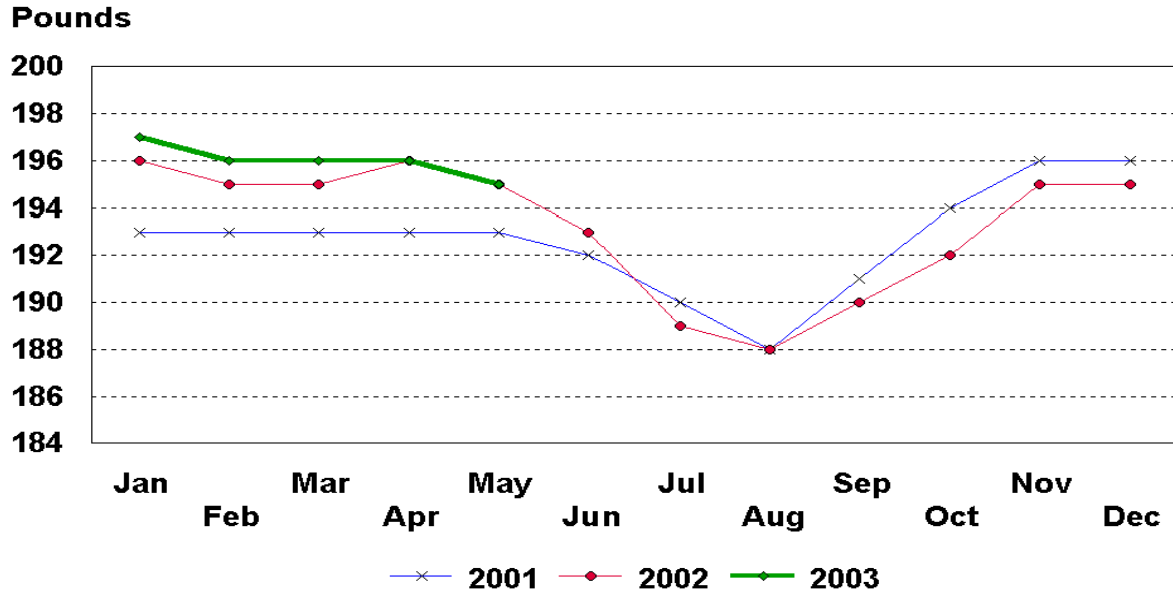
U.S. Monthly Federally Inspected Average Dressed Weight Steers



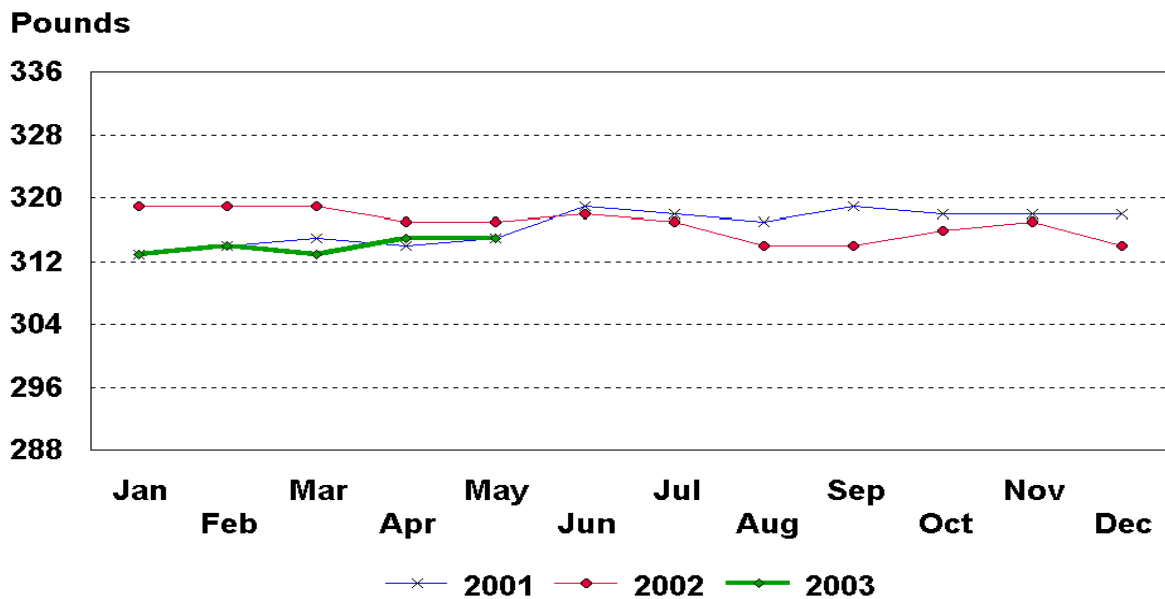
U.S. Monthly Federally Inspected Average Dressed Weight Heifers



U.S. Monthly Federally Inspected Average Dressed Weight Barrows and Gilts



U.S. Monthly Federally Inspected Average Dressed Weight Sows



Livestock Slaughter Estimates

Data Sources: Primary data for the commercial livestock slaughter estimates are obtained from the **Weekly Livestock Slaughter Report** (LS-149) questionnaires completed by inspectors from the Food Safety and Inspection Service (FSIS), USDA, which provide actual counts of animals slaughtered in Federally Inspected (FI) plants. These counts are combined with data from State-administered Non-Federally Inspected (NFI) slaughter plants to derive total commercial slaughter estimates. Over 95 percent of the total U.S. slaughter for any species is under FI. The LS-149 forms collect number of head slaughtered daily under FI by species and class as well as head kill after condemnation and total live and dressed weights.

Slightly under 900 plants in the U.S. are operated under Federal Inspection and over 2,300 plants under State inspection. Slaughter from State-inspected Talmedge-Aiken plants is included in FI totals (see Types of Plants, page 98). To prevent duplication in reporting between NFI and FI plants and assure all FI plants are included, certificates prepared by FSIS identifying operating status are constantly monitored.

Revision Policy: Revisions are generally the result of late or corrected data and are less than one-half of 1 percent. Revisions for the previous month and the year-to-date totals are noted in each monthly release by an (*) or a footnote. Final data are published in the annual summary.

Procedures and Reliability: Individual inspectors may be contacted by telephone if the **Weekly Livestock Slaughter Report** questionnaire is not received by NASS in time for summarization. This assures that all plants slaughtering a large number of head or several species are accounted for each week.

All head kill data are tabulated on a weekly basis approximately two weeks after the kill week. A computer edit compares each plant's data with the historical data for that plant. The edit provides a missing reports listing for follow-up telephone contact and imputes missing weight data. In addition, data are checked for unusual values for species, class, head kill, and pattern of kill generally, based on each plant's past operating profile.

Usually, if no form is received by mail, data for plants slaughtering fewer than 50 total head weekly of only one species are imputed. Imputation of live and dressed weight data may also be necessary on partially completed forms for any plant. The imputation is also based on the data history of each respective plant and represents the recent operating characteristics until final data are tabulated. Imputed head kill for missing plants usually is less than 1 percent of the U.S. head kill totals. Imputation for live and dressed weight data for cattle is about 10 percent and for hogs about 3 percent. The imputation for calves and sheep is more frequent and variable.

Head kill for FI slaughter before condemnation is for the actual days of the survey month, while head kill after condemnation and live and dressed weight data are for full weeks only. Average live and dressed weight and dressing percentages by State are compared with the

previous week as an additional check. Fluctuations are frequently the result of plants permanently or temporarily closing and a shift in the kind of animal reported.

FI data are summarized weekly and accumulated to a monthly total for this release, while NFI data are summarized monthly only. These weekly totals are published by USDA's Agricultural Marketing Service (AMS) in **Livestock, Meat, Wool Market News**, Weekly Summary, and Statistics.

Livestock slaughter estimates are based on a census of operating plants, and, therefore, have no sampling error. However, they may be subject to errors such as omissions, duplications and mistakes in reporting, recording and processing the data. These errors are minimized through rigid quality controls in the edit and summarization process, and a careful review of all reported data for consistency and reasonableness.

Generally, no data are published if less than three plants operate for a species in a State or if one plant has 60 percent or more of the total commercial slaughter for a species. These data are included in U.S. totals. A review of the reported data is made annually.

Types of Plants

There are generally **four types** of slaughtering plants.

- (1) **Federally Inspected (FI) Plants:** Plants that transport meat interstate must employ federal inspectors to assure compliance with USDA standards. Any State whose commercial plants operate entirely under federal inspection may still have custom-exempt establishments for which NFI estimates are made.
- (2) **Talmedge-Aiken (TA) Plants:** Slaughter plants in which USDA is responsible for inspection. However, federal inspection is carried out by State employees. These plants are considered to be federally inspected.
- (3) **Non-Federally Inspected (NFI) Plants:** Plants which sell and transport only intrastate. State inspectors assure compliance with individual State standards for these NFI plants. Mobile slaughtering units are excluded and are considered farm slaughter.
- (4) **Custom-Exempt Plants:** Plants that do not sell meat but operate on a custom basis only are custom-exempt. The animals and meat are not inspected, but the facilities must meet health standards. These are considered NFI plants and head kill is included in NFI totals.

Terms and Definitions

Commercial Production: Includes slaughter and meat production in federally inspected and other plants, but excludes animals slaughtered on farms.

Dressed Weight: The weight of a chilled animal carcass. Beef with kidney knob in; veal with hide off; lamb and mutton with pluck out; pork with leaf fat and kidneys out, jowls on and head off.

Dressing Percent: Is usually expressed as a percentage yield of chilled carcass in relation to the weight of the live animal on hoof. For example, a live hog that weighed 200 pounds on hoof and yielded a carcass weighing 140 pounds would have a dressing percentage of 70.

Food and Meat Inspection: Includes examination, checking, or testing of a carcass and/or meat against established government standards and involves checking the facility for cleanliness, health of animals, or parts of animals and quality of the meat produced.

Live Weight: The gross weight of a live animal when received at the slaughter plant.

Plant, Slaughter: An establishment where animals are killed and butchered.

Red Meat: Red meat production is the carcass weight after slaughter including beef, veal, pork, and lamb and mutton. It is derived using the number of head times average dressed weight for FI and NFI separately. FI head kill must be adjusted for condemnations using the factor derived from the FSIS inspection reports.

The FI meat production formula is $(\text{FI head kill}) \times (1 - \text{condemnation factor}) \times (\text{average dressed weight}) = \text{FI red meat production}$. The condemnation factor is the number of animals condemned as a percentage of the total kill. It has been fairly stable for the last five years; running about 1.90 head per 100 head for calves, .5 per 100 for cattle, .40 per 100 for hogs and .20 per 100 for sheep. The NFI meat production formula is $(\text{NFI head kill}) \times (\text{live weight}) \times (\text{FI dressing percentage}) = \text{NFI red meat production}$.

Slaughter: Killing and butchering of animals primarily for food.

Slaughter, Farm: Animals slaughtered on farms primarily for home consumption. Excludes custom slaughter for farmers at commercial establishments, but includes mobile slaughtering on farms. These estimates appear only in the annual slaughter release.

Wholesome Meat Act: Legislation that specifies that all meat produced for sale in the U.S. must be inspected; and further, meat that is transported interstate must be inspected in compliance with federal (USDA) standards.

Index

	Page
Commercial Calf Slaughter, Number, Total, and Average Live weight, by State and U.S.	6
Commercial Cattle Slaughter, Number, Total, and Average Live weight, by State and U.S.	5
Commercial Hog Slaughter, Number, Total and Average Live weight, by State and U.S.	7
Commercial Red Meat Production, by State and U.S.	4
Commercial Sheep and Lamb Slaughter, Number, Total, and Average Live weight, by State and U.S.	8
Data Sources, Revision Policy, and Procedures and Reliability	21
Federally Inspected Classification of Number and Average Dressed Weight, by Species and Class and U.S.	9
Federally Inspected Number by Species and Class, by Regions and U.S.	10
Federally Inspected Number by Species and Class, by State and U.S.	12
Federally Inspected Percent of Total Commercial, by Species, U.S.	14
Livestock Slaughter, Number and Average Weights, by Species and Type of Slaughter, U.S.	3
Red Meat Production, Commercial and FI, by Class, U.S	2
Terms and Definitions	23
Types of Plants	22

The next "Livestock Slaughter" report will be released at 8:30 a.m. on July 18, 2003.

The United States Department of Agriculture (USDA) prohibits discrimination in all its programs on the basis of race, color, national origin, gender, religion, age, disability, political beliefs, sexual orientation, and marital or family status. (Not all prohibited bases apply to all programs.) Persons with disabilities who require alternative means for communication of program information (braille, large print, audiotape, etc.) should contact the USDA's TARGET Center at 202-720-2600 (voice and TDD).

To file a complaint of discrimination, write USDA, Director, Office of Civil Rights, Room 326-W, Whitten Building, 1400 Independence Avenue, SW, Washington, D.C., 20250-9410, or call 202-720-5964 (voice or TDD). USDA is an equal opportunity provider and employer.

ACCESS TO REPORTS!!

For your convenience, there are several ways to obtain NASS reports, data products, and services:

INTERNET ACCESS

All NASS reports are available free of charge on the worldwide Internet. For access, connect to the Internet and go to the NASS Home Page at: <http://www.usda.gov/nass/>. Select "Today's Reports" or Publications and then Reports Calendar or Publications and then Search, by Title or Subject.

E-MAIL SUBSCRIPTION

All NASS reports are available by subscription free of charge direct to your e-mail address. Starting with the NASS Home Page at <http://www.usda.gov/nass/>, click on **Publications**, then click on the **Subscribe by E-mail** button which takes you to the page describing e-mail delivery of reports. Finally, click on **Go to the Subscription Page** and follow the instructions.

AUTOFAX ACCESS

NASSFax service is available for some reports from your fax machine. Please call 202-720-2000, using the handset attached to your fax. Respond to the voice prompts. Document 0411 is a list of available reports.

PRINTED REPORTS OR DATA PRODUCTS

CALL OUR TOLL-FREE ORDER DESK: 800-999-6779 (U.S. and Canada)
Other areas, please call 703-605-6220 FAX: 703-605-6900
(Visa, MasterCard, check, or money order acceptable for payment.)

ASSISTANCE

For **assistance** with general agricultural statistics or further information about NASS or its products or services, contact the **Agricultural Statistics Hotline** at **800-727-9540**, 7:30 a.m. to 4:00 p.m. ET, or e-mail: nass@nass.usda.gov.
