



Livestock Slaughter

Released May 21, 2004, by the National Agricultural Statistics Service (NASS), Agricultural Statistics Board, U.S. Department of Agriculture. For information on *Livestock Slaughter* call Faye Propsom at (515) 284-4340, office hours 8:00 a.m. to 4:30 p.m. CT.

Pork Production at Record Monthly High for April

Commercial red meat production for the United States totaled 3.71 billion pounds in April, down 3 percent from the 3.85 billion pounds produced in April 2003.

Beef production, at 1.96 billion pounds, was 9 percent below the previous year. Cattle slaughter totaled 2.70 million head, down 9 percent from April 2003. The average live weight was down 9 pounds from the previous year, at 1,200 pounds.

Veal production totaled 13.9 million pounds, 13 percent below April a year ago. Calf slaughter totaled 70,700 head, down 11 percent from April 2003. The average live weight was 7 pounds below last year, at 329 pounds.

Pork production totaled 1.73 billion pounds, up 4 percent from the previous year, and set a record monthly high. Hog kill totaled 8.65 million head, 4 percent above April 2003. The average live weight was unchanged the previous year, at 268 pounds.

Lamb and mutton production, at 17.4 million pounds, was down 11 percent from April 2003. Sheep slaughter totaled 256,000 head, 14 percent below last year. The average live weight was 136 pounds, up 5 pounds from April a year ago.

January to April 2004 commercial red meat production was 14.8 billion pounds, down 2 percent from 2003. Accumulated beef production was down 8 percent from last year, veal was down 12 percent, pork was up 5 percent from last year, and lamb and mutton production was up 2 percent.

April 2003 contained 22 weekdays (including no holidays) and 4 Saturdays.

April 2004 contained 22 weekdays (including no holidays) and 4 Saturdays.

Commercial Red Meat Production: United States ¹

Class	Apr 2003	Mar 2004	Apr 2004	Apr 04 % of		Jan - Apr ²		
				Apr 2003	Mar 2004	2003	2004	04 as % of 03
	<i>Million Pounds</i>	<i>Million Pounds</i>	<i>Million Pounds</i>	<i>Percent</i>	<i>Percent</i>	<i>Million Pounds</i>	<i>Million Pounds</i>	<i>Percent</i>
Beef	2,151	*2,107	1,957	91	93	8,433	7,791	92
Veal	16.0	*14.1	13.9	87	99	66.1	58.5	88
Pork	1,659	1,801	1,725	104	96	6,558	6,856	105
Lamb & Mutton	19.5	22.1	17.4	89	79	68.7	69.8	102
Total Red Meat	3,846	*3,944	3,713	97	94	15,125	14,775	98

* Revised.

¹ Based on packers' dressed weights and excludes farm slaughter.

² Accumulated totals and percentages based on unrounded data.

Federally Inspected Red Meat Production: United States ¹

Class	Apr 2003	Mar 2004	Apr 2004	Apr 04 % of		Jan - Apr ²		
				Apr 2003	Mar 2004	2003	2004	04 as % of 03
	<i>Million Pounds</i>	<i>Million Pounds</i>	<i>Million Pounds</i>	<i>Percent</i>	<i>Percent</i>	<i>Million Pounds</i>	<i>Million Pounds</i>	<i>Percent</i>
Beef	2,121	*2,076	1,929	91	93	8,307	7,673	92
Veal	15.5	*13.6	13.5	87	99	64.1	56.9	89
Pork	1,642	1,785	1,711	104	96	6,488	6,796	105
Lamb & Mutton	18.6	21.5	16.5	89	77	65.9	66.9	102
Total Red Meat	3,797	*3,895	3,669	97	94	14,925	14,593	98

* Revised.

¹ Based on packers' dressed weights and excludes farm slaughter.

² Accumulated totals and percentages based on unrounded data.

Livestock Slaughter: Number and Average Weights, United States ¹

Species	Unit	Apr 2003	Mar 2004	Apr 2004	Apr 04 % of		Jan - Apr ²		
					Apr 2003	Mar 2004	2003	2004	04 % of 03
					<i>Percent</i>	<i>Percent</i>	<i>Prct</i>		
Cattle No.									
Fed. Insp.	Thou	2,917.6	*2,818.1	2,653.5	91	94	11,111.5	10,379.0	93
Other	Thou	48.5	50.4	44.9	93	89	205.6	191.8	93
Comm'l. ³	Thou	2,966.1	*2,868.5	2,698.5	91	94	11,317.0	10,570.8	93
Live Wt/Hd									
Fed. Insp.	Lbs	1,211	1,219	1,201	99	99	1,245	1,226	98
Other	Lbs	1,093	1,098	1,105	101	101	1,094	1,102	101
Comm'l.	Lbs	1,209	1,217	1,200	99	99	1,243	1,224	99
Calves No.									
Fed. Insp.	Thou	77.2	*74.7	69.2	90	93	333.0	291.4	88
Other	Thou	1.9	1.7	1.5	82	89	7.8	6.3	81
Comm'l. ³	Thou	79.1	*76.4	70.7	89	93	340.8	297.8	87
Live Wt/Hd									
Fed. Insp.	Lbs	335	306	327	95	103	320	323	101
Other	Lbs	431	423	418	97	99	427	421	99
Comm'l.	Lbs	336	*307	329	98	107	323	327	101
Hogs No.									
Fed. Insp.	Thou	8,237.8	*8,941.6	8,566.9	104	96	32,586.5	34,016.5	104
Other	Thou	104.1	96.7	85.4	82	88	409.1	349.6	85
Comm'l. ³	Thou	8,341.9	*9,038.4	8,652.3	104	96	32,995.7	34,366.1	104
Live Wt/Hd									
Fed. Insp.	Lbs	268	268	268	100	100	268	268	100
Other	Lbs	233	233	236	101	101	235	235	100
Comm'l.	Lbs	268	268	268	100	100	268	268	100
Sheep&Lambs No.									
Fed. Insp.	Thou	279.6	*294.7	238.2	85	81	969.4	939.2	97
Other	Thou	17.7	12.0	17.8	101	149	56.1	55.7	99
Comm'l. ³	Thou	297.3	*306.7	256.0	86	83	1,025.5	994.9	97
Live Wt/Hd									
Fed. Insp.	Lbs	133	145	138	104	95	136	142	104
Other	Lbs	104	108	103	99	96	105	105	100
Comm'l.	Lbs	131	144	136	103	94	134	140	105

* Revised.

¹ Excludes slaughter on farms.

² Accumulated totals and percentages based on unrounded data.

³ Totals may not equal sum of the parts due to rounding.

Commercial Red Meat Production: By State and United States ¹

State	Apr 2003	Mar 2004	Apr 2004	Apr 04 as % of ²	
				Apr 2003	Mar 2004
	<i>Million Pounds</i>	<i>Million Pounds</i>	<i>Million Pounds</i>	<i>Percent</i>	<i>Percent</i>
AL	3.6	3.1	2.9	80	91
AK	0.1				
AZ	38.9	31.6	29.0	74	92
AR	4.7	5.4	4.9	104	90
CA	119.6	122.9	115.6	97	94
CO	154.4	170.8	151.8	98	89
DE-MD	2.6	3.0	2.5	95	81
FL	6.0	4.9	4.8	80	97
GA	23.6	11.0	10.3	43	93
HI	0.9	0.9	0.8	89	92
ID	47.1	*43.2	34.5	73	80
IL	209.6	237.2	215.1	103	91
IN	120.6	128.2	122.8	102	96
IA	523.8	579.9	553.9	106	96
KS	454.2	492.9	441.5	97	90
KY	34.8	42.7	41.9	120	98
LA	1.3	1.2	1.0	79	80
MI	34.1	*32.8	33.9	99	103
MN	189.1	*202.0	178.5	94	88
MS	26.0	24.4	24.1	93	99
MO	39.0	37.9	39.0	100	103
MT	1.3	1.2	1.2	94	102
NE	598.3	555.3	546.8	91	98
NV	0.1	0.1	0.1	97	85
N ENG ³	1.5	1.0	1.0	71	99
NJ	4.6	4.3	4.0	87	93
NM	1.0	0.8	0.6	62	81
NY	3.7	3.6	3.1	84	87
NC	185.3	*192.5	183.7	99	95
ND	2.4	2.9	2.7	112	92
OH	26.1	27.7	26.0	100	94
OK	86.5	93.5	93.5	108	100
OR	3.7	3.7	3.5	95	93
PA	110.6	105.7	100.7	91	95
SC	21.3	21.7	21.3	100	98
SD	76.8	77.7	74.7	97	96
TN	18.9	22.4	16.6	88	74
TX	400.5	406.9	377.6	94	93
UT	41.4	33.0	34.3	83	104
VA	62.2	69.8	69.7	112	100
WA	52.2	36.6	39.8	76	109
WV	0.5	0.5	0.4	78	75
WI	112.5	*106.6	102.8	91	96
WY	0.5	0.5	0.5	96	101
US	3,845.8	*3,944.3	3,713.3	97	94

* Revised.

¹ Includes total beef, veal, pork, lamb, and mutton.

² Percentages based on unrounded data.

³ N ENG includes CT, ME, MA, NH, RI, and VT.

**Commercial Cattle Slaughter: By State and United States,
April 2003 and 2004 ¹**

State	Number Slaughtered		Total Live Weight		Average Live Weight	
	2003	2004	2003	2004	2003	2004
	<i>1,000 Head</i>	<i>1,000 Head</i>	<i>1,000 Pounds</i>	<i>1,000 Pounds</i>	<i>Pounds</i>	<i>Pounds</i>
AL						
AK						
AZ	49.2	37.2	66,051	48,572	1,341	1,305
AR	1.2	1.1	1,007	1,049	852	921
CA	114.6	104.1	146,784	134,966	1,280	1,296
CO	200.0	196.4	237,508	229,435	1,188	1,168
DE-MD	2.9	2.8	3,704	3,549	1,259	1,261
FL	8.6	7.1	9,559	7,666	1,105	1,080
GA	34.3	13.4	41,846	16,360	1,220	1,218
HI	1.0	0.8	1,003	860	1,034	1,081
ID	62.8	43.9	77,424	55,204	1,233	1,256
IL						
IN						
IA						
KS	607.5	593.0	709,408	687,560	1,168	1,160
KY	1.6	1.4	1,400	1,183	891	862
LA	1.1	1.1	1,027	938	909	848
MI	39.3	38.9	53,081	51,922	1,352	1,334
MN	60.0	53.0	81,980	74,088	1,367	1,399
MS	0.3	0.1	268	92	983	811
MO						
MT	1.5	1.5	1,826	1,733	1,180	1,170
NE	649.7	576.5	797,578	706,011	1,228	1,225
NV	0.1	0.1	98	111	1,013	1,074
N ENG ²	1.4	1.0	1,591	1,011	1,101	1,024
NJ	2.4	1.8	2,569	2,091	1,092	1,173
NM	2.1	1.2	1,972	1,108	919	923
NY	4.4	3.5	4,941	4,048	1,126	1,146
NC	17.7	18.9	18,863	19,506	1,063	1,034
ND						
OH	11.1	8.7	12,352	9,892	1,115	1,131
OK	3.0	2.4	3,088	2,676	1,046	1,118
OR	1.2	1.3	1,324	1,434	1,080	1,080
PA	93.2	78.4	119,287	91,890	1,280	1,173
SC						
SD						
TN	1.3	1.1	1,172	1,012	908	932
TX	542.1	517.8	632,675	598,320	1,167	1,155
UT	55.1	46.5	65,178	53,475	1,183	1,150
VA	1.0	1.1	954	1,148	934	1,024
WA	71.5	55.0	85,588	64,470	1,197	1,172
WV	0.6	0.5	627	505	976	931
WI	141.4	120.9	182,721	161,640	1,292	1,337
WY	0.6	0.6	721	702	1,171	1,176
US ³	2,966.1	2,698.5	3,586,024	3,238,123	1,209	1,200

¹ Includes slaughter under Federal inspection and other Commercial slaughter, excludes farm slaughter.

² N ENG includes CT, ME, MA, NH, RI, and VT.

³ States with no data printed are still included in the US total, data not printed to avoid disclosing individual operations. Accumulated totals and percentages based on unrounded data.

**Commercial Calf Slaughter: By State and United States,
April 2003 and 2004 ¹**

State	Number Slaughtered		Total Live Weight		Average Live Weight	
	2003	2004	2003	2004	2003	2004
	<i>1,000 Head</i>	<i>1,000 Head</i>	<i>1,000 Pounds</i>	<i>1,000 Pounds</i>	<i>Pounds</i>	<i>Pounds</i>
AL						
AK						
AZ						
AR						
CA	10.4	7.3	1,724	1,035	166	142
CO						
DE-MD	0.1	0.1	33	21	349	325
FL						
GA						
HI						
ID						
IL	8.7	7.1	3,967	3,431	456	485
IN	0.5	0.3	62	34	127	131
IA						
KS						
KY						
LA	0.8	0.5	398	239	487	497
MI	2.0	1.8	883	781	443	427
MN						
MS						
MO						
MT						
NE						
NV						
N ENG ²	2.2	0.7	294	148	134	226
NJ	8.4	8.0	3,801	3,033	452	379
NM						
NY	10.8	10.9	1,060	913	99	84
NC	0.1	0.1	39	59	407	501
ND						
OH	5.3	5.9	2,150	2,486	409	424
OK	0.1	0.1	48	51	426	422
OR						
PA	14.6	16.1	5,586	5,727	381	356
SC						
SD						
TN	0.1	0.1	56	60	513	604
TX	1.5	1.1	822	673	557	607
UT						
VA						
WA						
WV						
WI	11.3	9.3	5,098	4,180	453	451
WY						
US ³	79.1	70.7	26,617	23,295	336	329

¹ Includes slaughter under Federal inspection and other Commercial slaughter, excludes farm slaughter.

² N ENG includes CT, ME, MA, NH, RI, and VT.

³ States with no data printed are still included in the US total, data not printed to avoid disclosing individual operations. Accumulated totals and percentages based on unrounded data.

**Commercial Hog Slaughter: By State and United States,
April 2003 and 2004 ¹**

State	Number Slaughtered		Total Live Weight		Average Live Weight	
	2003	2004	2003	2004	2003	2004
	<i>1,000 Head</i>	<i>1,000 Head</i>	<i>1,000 Pounds</i>	<i>1,000 Pounds</i>	<i>Pounds</i>	<i>Pounds</i>
AL	9.7	9.2	4,978	4,274	515	465
AK						
AZ	0.9	1.2	242	247	264	203
AR						
CA	198.4	212.3	47,850	52,129	241	246
CO	1.0	0.9	274	224	268	247
DE-MD	1.1	1.0	288	261	271	260
FL	8.8	7.9	1,561	1,381	178	174
GA	13.2	11.5	3,262	2,779	247	241
HI	2.3	2.3	492	459	213	196
ID						
IL	695.3	769.0	192,520	214,158	277	278
IN	599.3	610.0	157,272	159,527	262	262
IA	2,405.0	2,534.6	642,588	681,476	267	269
KS	21.1	17.8	7,090	6,845	337	384
KY	171.1	208.1	45,460	55,039	266	264
LA	2.3	1.7	476	332	209	200
MI	9.4	9.4	3,543	3,738	377	397
MN	738.5	713.1	195,690	188,283	265	264
MS						
MO	173.2	175.7				
MT	1.0	0.9	239	225	240	238
NE	568.4	580.8	151,468	154,532	266	266
NV						
N ENG ²	1.6	1.4	421	320	264	226
NJ	7.4	7.8	714	823	97	105
NM	0.1	0.1	31	14	212	210
NY	2.3	2.1	455	470	198	227
NC	913.2	907.1	233,357	231,013	256	255
ND	11.3	13.8	2,583	3,125	229	227
OH	95.7	99.1	25,736	26,719	269	270
OK	401.8	432.9	113,636	121,138	283	280
OR	17.4	17.2	4,526	4,237	260	246
PA	228.3	232.0	57,130	56,762	250	245
SC						
SD	356.7	351.2	93,634	91,406	263	260
TN	56.9	49.6	27,435	23,690	482	478
TX	34.8	33.0	10,047	8,712	289	264
UT	3.6	4.4	795	965	220	220
VA	315.6	356.1	81,857	91,298	259	256
WA	1.7	1.8	424	446	254	254
WV	0.6	0.5	164	119	282	243
WI	42.9	48.9	19,310	22,648	450	463
WY	0.4	0.2	95	62	255	266
US ³	8,341.9	8,652.3	2,234,847	2,315,187	268	268

¹ Includes slaughter under Federal inspection and other Commercial slaughter, excludes farm slaughter.

² N ENG includes CT, ME, MA, NH, RI, and VT.

³ States with no data printed are still included in the US total, data not printed to avoid disclosing individual operations. Accumulated totals and percentages based on unrounded data.

**Commercial Sheep and Lamb Slaughter: By State and United States,
April 2003 and 2004 ¹**

State	Number Slaughtered		Total Live Weight		Average Live Weight	
	2003	2004	2003	2004	2003	2004
	<i>1,000 Head</i>	<i>1,000 Head</i>	<i>1,000 Pounds</i>	<i>1,000 Pounds</i>	<i>Pounds</i>	<i>Pounds</i>
AL						
AK						
AZ	0.3	0.2	33	27	130	112
AR						
CA						
CO	71.4	82.1	11,009	13,153	154	160
DE-MD	2.9	2.6	325	297	112	113
FL	0.4	0.3	31	18	82	71
GA	0.5	0.6	54	63	99	106
HI						
ID	0.3	0.3	33	34	114	114
IL	21.3	19.5	2,640	2,409	124	123
IN	4.3	3.4	436	348	100	101
IA	37.4	31.3	5,675	4,873	152	156
KS	0.2	0.2	16	20	97	109
KY	0.9	1.0	129	119	139	123
LA	0.1	0.1	14	8	100	79
MI	16.5	15.9	1,963	1,888	119	119
MN	0.2	0.2	21	23	117	122
MS						
MO	0.7	0.5	68	53	103	98
MT	0.3	0.2	41	22	144	127
NE	0.1	0.1	8	10	113	125
NV	0.1	0.1	12	7	106	82
N ENG ²	4.0	3.8	378	329	94	87
NJ	12.3	12.7	1,060	974	86	77
NM	2.2	1.9	236	194	105	102
NY	9.2	6.6	681	474	74	72
NC		0.3		30		88
ND						
OH	2.2	1.5	241	157	110	106
OK	0.1	0.1	10	15	135	111
OR	1.4	1.6	187	209	136	128
PA	10.6	8.2	1,102	862	104	106
SC						
SD	1.5	0.7	193	82	130	118
TN	0.5	0.4	41	44	84	101
TX	36.6	28.2	4,515	3,668	123	130
UT	3.0	3.0	380	380	127	126
VA	0.6	1.0	57	97	101	99
WA	0.9	0.4	102	54	120	145
WV						
WI	1.2	0.9	165	131	137	139
WY	0.1	0.1	14	14	142	128
US ³	297.3	256.0	39,015	34,711	131	136

¹ Includes slaughter under Federal inspection and other Commercial slaughter, excludes farm slaughter.

² N ENG includes CT, ME, MA, NH, RI, and VT.

³ States with no data printed are still included in the US total, data not printed to avoid disclosing individual operations. Accumulated totals and percentages based on unrounded data.

**Classification of Livestock Slaughtered Under Federal Inspection:
United States**

Item	Apr 2003	Mar 2004	Apr 2004	Jan - Apr ¹		Apr 2003	Mar 2004	Apr 2004	Jan - Apr ¹	
				2003	2004				2003	2004
	<i>1,000 Head</i>	<i>1,000 Head</i>	<i>1,000 Head</i>	<i>1,000 Head</i>	<i>1,000 Head</i>	<i>Percent of Total</i>	<i>Percent of Total</i>	<i>Percent of Total</i>	<i>Percent of Total</i>	<i>Percent of Total</i>
Class ²										
Cattle										
Steers	1,497	1,383	1,366	5,384	5,093	51.3	49.1	51.5	48.5	49.1
Heifers	877	*950	836	3,550	3,424	30.1	33.7	31.5	32.0	33.0
All Cows	492	*440	405	1,982	1,694	16.9	15.6	15.2	17.8	16.3
Dairy Cows	239	*219	179	982	822	8.2	7.8	6.7	8.8	7.9
Other Cows	253	*221	226	1,000	872	8.7	7.8	8.5	9.0	8.4
Bulls & Stags	51	45	47	195	167	1.8	1.6	1.8	1.8	1.6
Total ¹	2,918	*2,818	2,654	11,111	10,379	100.0	100.0	100.0	100.0	100.0
Hogs										
Barrows & Gilts	7,952	8,615	8,262	31,475	32,827	96.5	96.3	96.4	96.6	96.5
Sows	265	*302	283	1,032	1,101	3.2	3.4	3.3	3.2	3.2
Stags & Boars	21	25	22	79	88	0.3	0.3	0.3	0.2	0.3
Total ¹	8,238	8,942	8,567	32,587	34,016	100.0	100.0	100.0	100.0	100.0
Sheep										
Mature Sheep	12	12	13	43	45	4.3	4.0	5.6	4.4	4.8
Lambs & Yrlngs	268	283	225	926	894	95.7	96.0	94.4	95.6	95.2
Total ¹	280	295	238	969	939	100.0	100.0	100.0	100.0	100.0
Average Dressed Weight ³										
	<i>Pounds</i>	<i>Pounds</i>	<i>Pounds</i>	<i>Pounds</i>	<i>Pounds</i>					
Cattle	731	741	731	752	743					
Steers ⁴	781	784	772	807	790					
Heifers ⁴	710	725	712	744	729					
All Cows ⁴	598	*623	613	599	617					
Bulls & Stags ⁴	919	894	902	925	897					
Calves & Vealers	205	190	198	196	198					
Hogs	200	200	201	200	201					
Barrow Gilts ⁵	196	196	197	196	197					
Sows ⁵	315	313	311	314	314					
Stags & Boars ⁵	241	210	223	239	217					
Sheep	67	73	69	68	71					
Mature Sheep ⁶	65	68	67	64	67					
Lamb & Yrlngs ⁶	67	73	70	68	71					

* Revised.

¹ Total and percentages based on unrounded data.

² Species totals and classification reported by meat inspectors, Inspection Operations, FSIS.

³ Based on packer reports.

⁴ Included in cattle average dressed weight.

⁵ Included in hog average dressed weight.

⁶ Included in sheep average dressed weight.

**Federally Inspected Slaughter: By Region and United States,
April 2004 ¹**

Standard Federal Regions	Cattle							Calves
	Total ²	Steers	Heifers	Cows			Bulls & Stags	Total
				All	Dairy	Other		
	<i>1,000 Head</i>	<i>1,000 Head</i>	<i>1,000 Head</i>	<i>1,000 Head</i>	<i>1,000 Head</i>	<i>1,000 Head</i>	<i>1,000 Head</i>	<i>1,000 Head</i>
1	0.8	0.3	0.2	0.2	0.2		0.2	0.6
2	5.1	1.3	0.3	3.1	2.9	0.2	0.4	18.8
3	81.1	31.8	7.8	37.8	30.5	7.3	3.7	16.2
4	52.9	1.1	0.3	43.4	9.1	34.4	8.0	1.0
5	276.8	123.4	33.2	113.8	66.0	47.7	6.5	24.1
6	517.4	278.9	174.0	52.8	9.7	43.1	11.7	0.9
7	1,227.3	664.0	487.9	67.6	2.4	65.2	7.8	
8	252.4	146.0	92.2	12.3	3.6	8.8	1.8	
9	141.2	79.7	7.3	50.3	42.9	7.4	4.0	7.1
10	98.5	39.4	32.5	23.5	11.4	12.1	3.1	0.4
US ²	2,653.5	1,365.7	835.8	404.8	178.7	226.1	47.2	69.2
	Hogs				Sheep			
	Total ²	Barrows & Gilts	Sows	Stags & Boars	Total ²	Mature Sheep	Lambs & Yearlings	
	<i>1,000 Head</i>	<i>1,000 Head</i>	<i>1,000 Head</i>	<i>1,000 Head</i>	<i>1,000 Head</i>	<i>1,000 Head</i>	<i>1,000 Head</i>	
1	1.2	1.1			3.4	0.4	3.0	
2	9.7	9.4	0.2	0.1	18.4	1.4	17.0	
3	588.5	587.0	1.5		11.0	1.3	9.7	
4	1,367.8	1,292.7	74.1	1.0	2.6	1.3	1.3	
5	2,220.2	2,084.9	132.7	2.6	35.8	5.4	30.4	
6	467.0	447.7	19.2	0.1	24.6	1.0	23.6	
7	3,302.3	3,233.9	49.9	18.5	31.9	0.1	31.8	
8	367.2	362.4	4.7		85.1	1.9	83.2	
9	208.8	208.7	0.1		23.7	0.5	23.2	
10	34.5	34.4	0.1		1.8	0.2	1.6	
US ²	8,566.9	8,262.0	282.5	22.4	238.2	13.4	224.8	

¹ States included in regions are as follows: 1- CT, ME, NH, VT, MA, & RI; 2- NY & NJ; 3- DE-MD, PA, WV, & VA; 4- AL, FL, GA, KY, MS, NC, SC, & TN; 5- IL, IN, MI, MN, OH, & WI; 6- AR, LA, NM, OK, & TX; 7- IA, KS, MO, & NE; 8- CO, MT, ND, SD, UT, & WY; 9- AZ, CA, HI & NV; 10- AK, ID, OR, & WA.

² Totals may not add due to rounding.

**Federally Inspected Slaughter: By Region and United States,
January - April 2004 * ¹**

Standard Federal Regions	Cattle							Calves
	Total ²	Steers	Heifers	Cows			Bulls & Stags	Total
				All	Dairy	Other		
	<i>1,000 Head</i>	<i>1,000 Head</i>	<i>1,000 Head</i>	<i>1,000 Head</i>	<i>1,000 Head</i>	<i>1,000 Head</i>	<i>1,000 Head</i>	<i>1,000 Head</i>
1	3.9	1.2	0.8	1.3	1.2	0.1	0.6	4.3
2	21.7	5.6	1.2	13.5	12.8	0.7	1.4	79.7
3	316.1	118.2	29.2	157.5	124.7	32.7	11.3	58.5
4	208.3	5.0	1.6	173.2	64.3	108.9	28.4	5.0
5	1,098.2	445.4	147.1	481.4	284.4	197.0	24.4	103.3
6	2,024.5	1,057.0	690.3	232.0	44.0	188.0	45.2	5.0
7	4,752.5	2,490.9	1,976.7	257.8	11.3	246.6	27.1	0.1
8	975.4	505.3	416.0	47.5	16.5	31.0	6.5	
9	576.9	301.4	32.0	231.7	209.9	21.7	11.9	33.3
10	401.4	163.4	129.1	98.5	53.0	45.5	10.4	2.2
US ²	10,379.0	5,093.5	3,424.1	1,694.4	822.1	872.3	167.0	291.4
	Hogs				Sheep			
	Total ²	Barrows & Gilts	Sows	Stags & Boars	Total ²	Mature Sheep	Lambs & Yearlings	
	<i>1,000 Head</i>	<i>1,000 Head</i>	<i>1,000 Head</i>	<i>1,000 Head</i>	<i>1,000 Head</i>	<i>1,000 Head</i>	<i>1,000 Head</i>	
1	4.5	4.3	0.1		7.3	1.3	6.0	
2	40.5	39.4	0.7	0.4	48.6	5.3	43.3	
3	2,252.4	2,246.0	6.4	0.1	35.6	3.4	32.3	
4	5,443.0	5,107.6	330.4	5.0	9.7	4.2	5.6	
5	8,941.8	8,452.3	479.9	9.7	132.4	16.0	116.4	
6	1,793.0	1,710.7	82.1	0.2	108.5	5.1	103.5	
7	13,011.8	12,759.9	179.3	72.6	138.0	0.1	137.9	
8	1,570.1	1,548.9	21.1	0.1	338.6	7.7	330.9	
9	824.3	823.7	0.4	0.2	115.1	1.6	113.4	
10	135.0	134.6	0.3	0.1	5.4	0.4	4.9	
US ²	34,016.5	32,827.4	1,100.8	88.4	939.2	45.1	894.1	

* Accumulated totals based on unrounded data.

¹ States included in regions are as follows: 1- CT, ME, NH, VT, MA, & RI; 2- NY & NJ; 3- DE-MD, PA, WV, & VA; 4- AL, FL, GA, KY, MS, NC, SC, & TN; 5- IL, IN, MI, MN, OH, & WI; 6- AR, LA, NM, OK, & TX; 7- IA, KS, MO, & NE; 8- CO, MT, ND, SD, UT, & WY; 9- AZ, CA, HI & NV; 10- AK, ID, OR, & WA.

² Totals may not add due to rounding.

**Federally Inspected Slaughter: By State and United States,
April 2004**

State	Cattle							Calves
	Total ¹	Steers	Heifers	Cows			Bulls & Stags	Total
				All	Dairy	Other		
	<i>1,000 Head</i>	<i>1,000 Head</i>	<i>1,000 Head</i>	<i>1,000 Head</i>	<i>1,000 Head</i>	<i>1,000 Head</i>	<i>1,000 Head</i>	<i>1,000 Head</i>
AL								
AK								
AZ	36.8	30.2	0.1	6.5	6.5			
AR	0.6	0.1	0.1	0.3		0.3	0.1	
CA	103.6	49.2	6.9	43.5	36.4	7.1	3.9	7.1
CO	195.8	122.4	72.8	0.6	0.3	0.3	0.1	
DE-MD	2.8	1.9	0.6	0.3	0.2	0.1		0.1
FL	7.1	0.3		6.4	0.7	5.7	0.3	
GA	12.8	0.1		11.1	1.1	10.0	1.6	
HI	0.8	0.2	0.2	0.2		0.2	0.1	
ID	42.4	14.4	7.6	17.8	7.7	10.1	2.6	
IL								7.1
IN								0.3
IA								
KS	590.0	331.6	257.6	0.8		0.8		
KY	0.7	0.3	0.2	0.1		0.1		
LA								
MI	36.8	25.9	0.8	10.0	4.3	5.7	0.1	1.7
MN	50.9	7.9	3.6	35.2	11.5	23.7	4.2	
MS								
MO								
MT	0.4	0.2	0.1	0.1		0.1	0.1	
NE	574.7	298.1	213.3	55.9	2.1	53.8	7.3	
NV	0.1	0.1						
N ENG ²	0.8	0.3	0.2	0.2	0.2		0.2	0.6
NJ	1.8	0.8	0.1	0.6	0.5	0.1	0.2	8.0
NM	0.9			0.9	0.9			
NY	3.3	0.5	0.2	2.5	2.4	0.1	0.2	10.8
NC	18.4	0.1	0.1	14.1	7.1	7.0	4.1	0.1
ND								
OH	3.6	0.3	0.2	3.0	1.7	1.3	0.1	5.8
OK	0.1	0.1						
OR	1.0	0.2	0.1	0.6	0.5	0.1	0.2	
PA	78.1	29.8	7.2	37.4	30.3	7.1	3.7	16.1
SC								
SD								
TN	0.8	0.2	0.1	0.5	0.1	0.4	0.1	0.1
TX	515.7	278.7	173.9	51.6	8.8	42.8	11.6	0.8
UT	45.8	23.1	19.2	3.0	1.5	1.5	0.4	
VA	0.2							
WA	55.0	24.8	24.8	5.1	3.2	1.9	0.3	
WV								
WI	117.4	47.1	2.6	65.5	48.5	17.0	2.1	9.2
WY								
US ³	2,653.5	1,365.7	835.8	404.8	178.7	226.1	47.2	69.2

¹ Totals may not add due to rounding.

² N ENG includes CT, ME, MA, NH, RI, and VT.

³ States with no data printed are still included in the US total. Data not printed to avoid disclosing individual operations.

**Federally Inspected Slaughter: By State and United States,
April 2004**

State	Hogs				Sheep		
	Total ¹	Barrows & Gilts	Sows	Stags & Boars	Total ¹	Mature Sheep	Lambs & Yearlings
	<i>1,000 Head</i>	<i>1,000 Head</i>	<i>1,000 Head</i>	<i>1,000 Head</i>	<i>1,000 Head</i>	<i>1,000 Head</i>	<i>1,000 Head</i>
AL	8.3		7.3	0.9			
AK							
AZ							
AR							
CA	206.1	206.0	0.1				
CO	0.5	0.4	0.1		82.0		82.0
DE-MD	1.0	1.0			2.6	0.3	2.3
FL	7.9	7.8	0.1		0.3		0.3
GA	5.5	5.2	0.2				
HI	2.3	2.3					
ID					0.1		0.1
IL	755.7	682.6	71.6	1.5	17.4	2.0	15.4
IN	606.9	606.9			2.6	1.0	1.6
IA	2,532.5	2,474.4	40.0	18.1	31.2		31.2
KS	15.8	5.5	9.9	0.4	0.1		0.1
KY	207.8	201.6	6.1		1.0	0.8	0.2
LA							
MI	7.7	2.9	4.8		15.6	2.4	13.2
MN	711.2	711.2			0.1		0.1
MS							
MO	174.4	174.3			0.5		0.5
MT	0.1	0.1					
NE	579.7	579.7					
NV					0.1		0.1
N ENG ²	1.2	1.1			3.4	0.4	3.0
NJ	7.8	7.5	0.2	0.1	12.7	1.0	11.6
NM							
NY	1.9	1.8			5.7	0.3	5.4
NC	898.4	892.6	5.7		0.3		0.3
ND	13.5	13.5					
OH	93.6	80.8	11.7	1.0			
OK	430.1	425.8	4.3				
OR	17.1	17.0	0.1		1.6	0.1	1.4
PA	231.6	231.3	0.3		8.1	1.0	7.1
SC							
SD	350.3	346.1	4.3		0.5		0.5
TN	49.4	0.8	48.7		0.4	0.2	0.3
TX	25.4	20.8	4.6		24.6	1.0	23.6
UT	2.7	2.3	0.3		2.5	1.9	0.6
VA	355.9	354.7	1.2				
WA	1.6	1.6			0.1	0.1	0.1
WV							
WI	45.1	0.4	44.7		0.1		0.1
WY							
US ³	8,566.9	8,262.0	282.5	22.4	238.2	13.4	224.8

¹ Totals may not add due to rounding.

² N ENG includes CT, ME, MA, NH, RI, and VT.

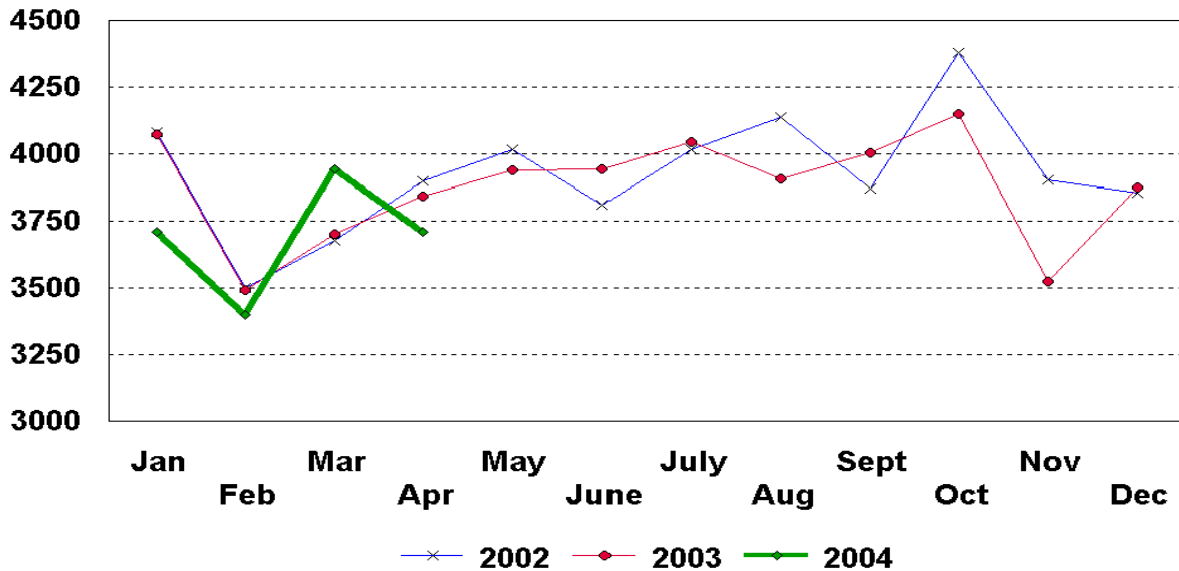
³ States with no data printed are still included in the US total. Data not printed to avoid disclosing individual operations.

Federally Inspected Slaughter: Percent of Total Commercial Slaughter by Species, United States

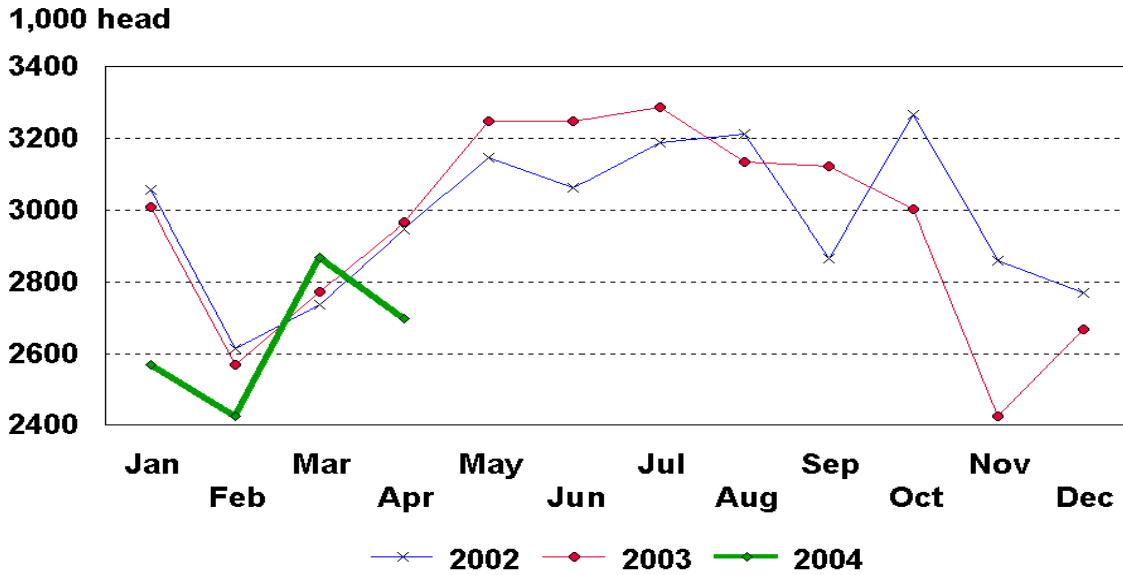
Species	Apr 2003	Mar 2004	Apr 2004	Jan - Apr	
				2003	2004
	<i>Percent</i>	<i>Percent</i>	<i>Percent</i>	<i>Percent</i>	<i>Percent</i>
Cattle	98.4	98.2	98.3	98.2	98.2
Calves	97.6	97.7	97.8	97.7	97.9
Hogs	98.8	98.9	99.0	98.8	99.0
Sheep	94.1	96.1	93.0	94.5	94.4

U.S. Monthly Commercial Red Meat Production

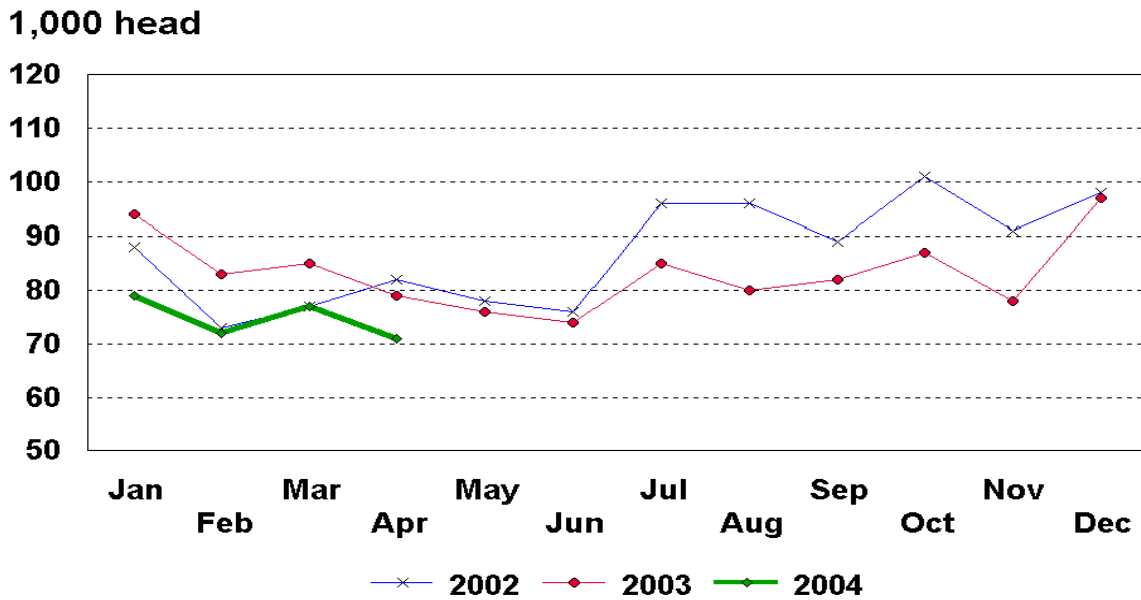
Million Pounds



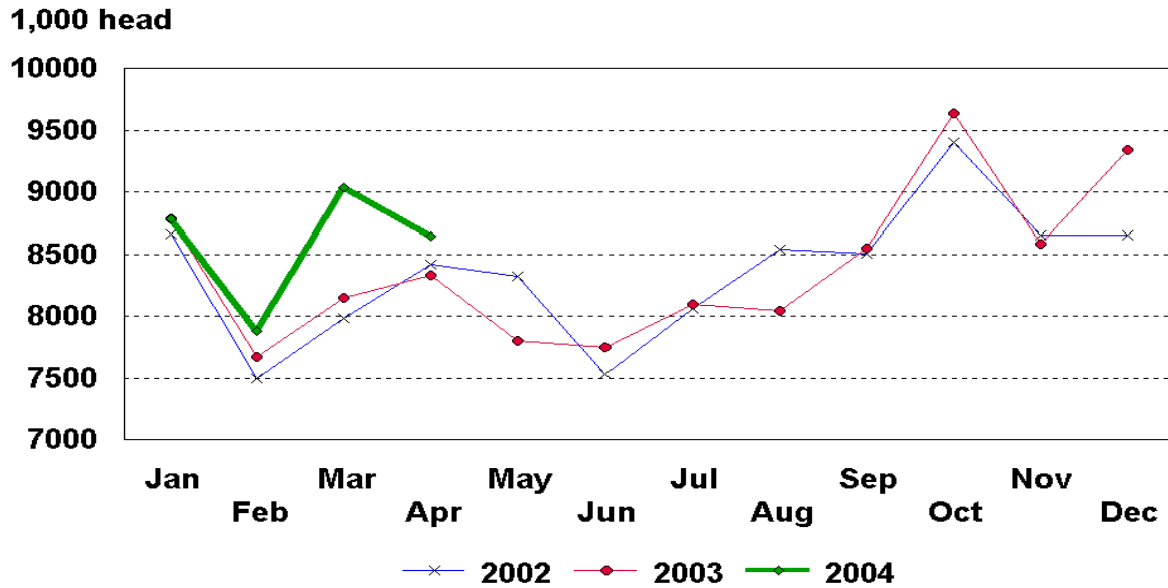
U.S. Monthly Commercial Slaughter Cattle



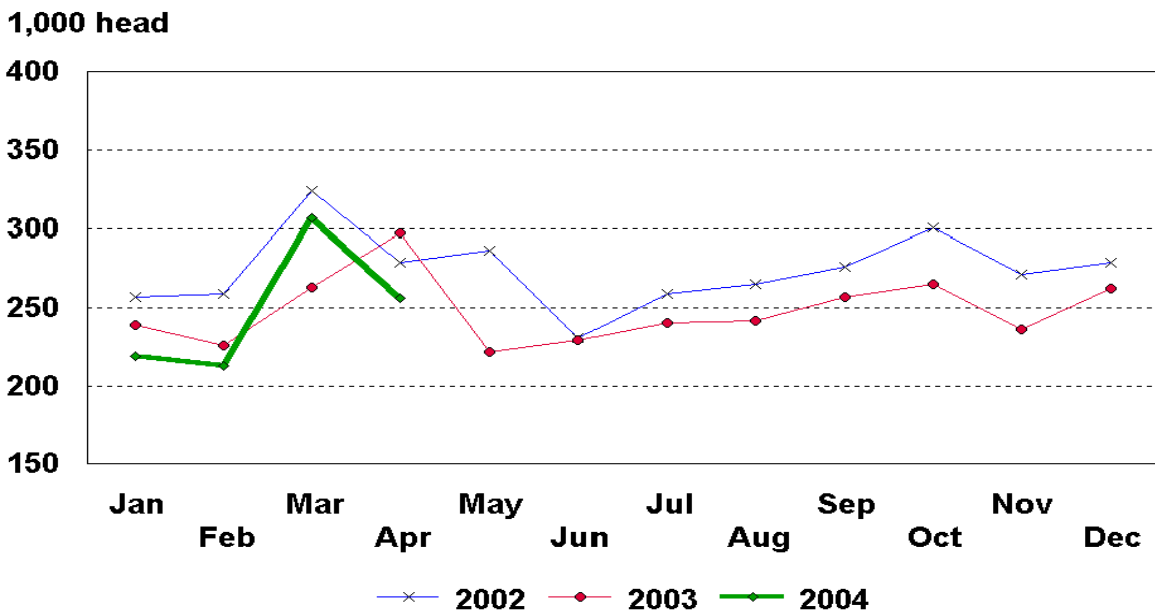
U.S. Monthly Commercial Slaughter Calves



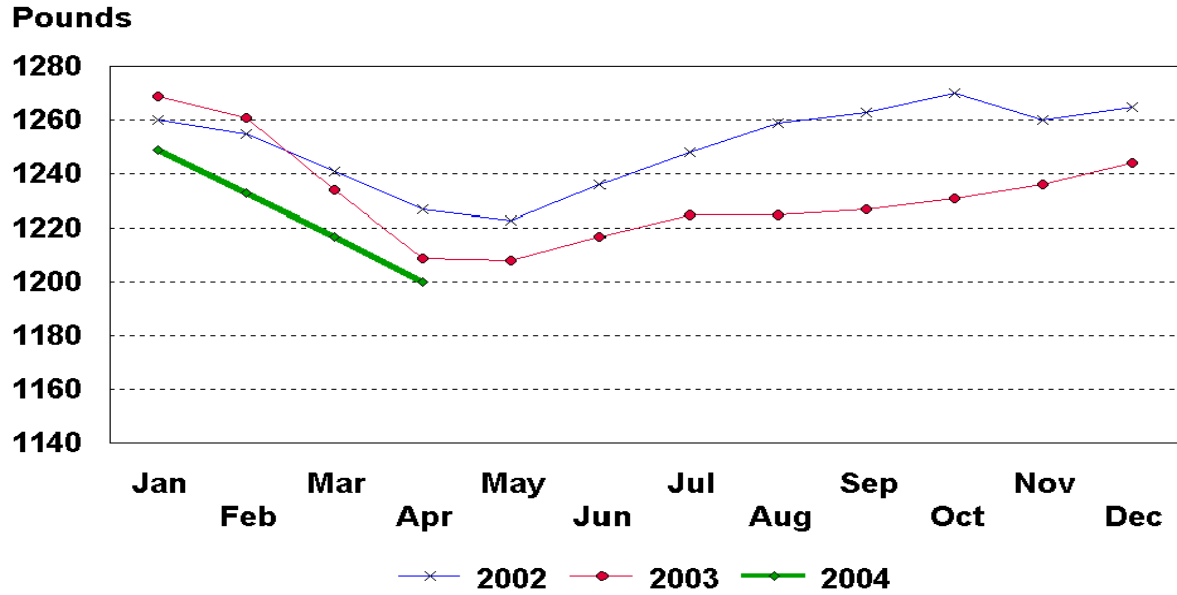
U.S. Monthly Commercial Slaughter Hogs



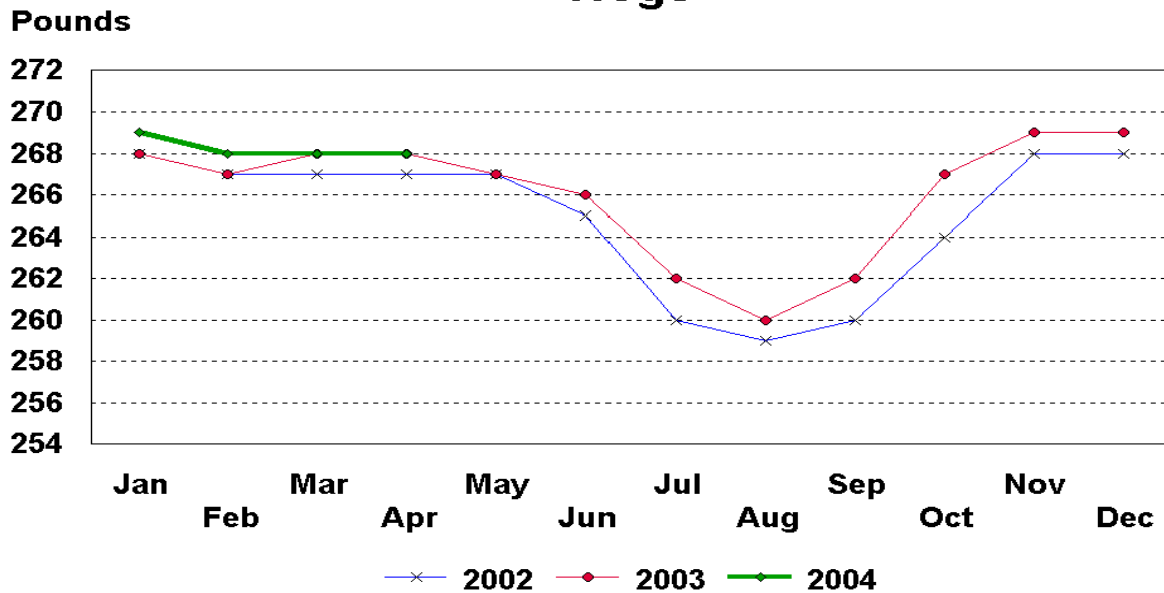
U.S. Monthly Commercial Slaughter Sheep



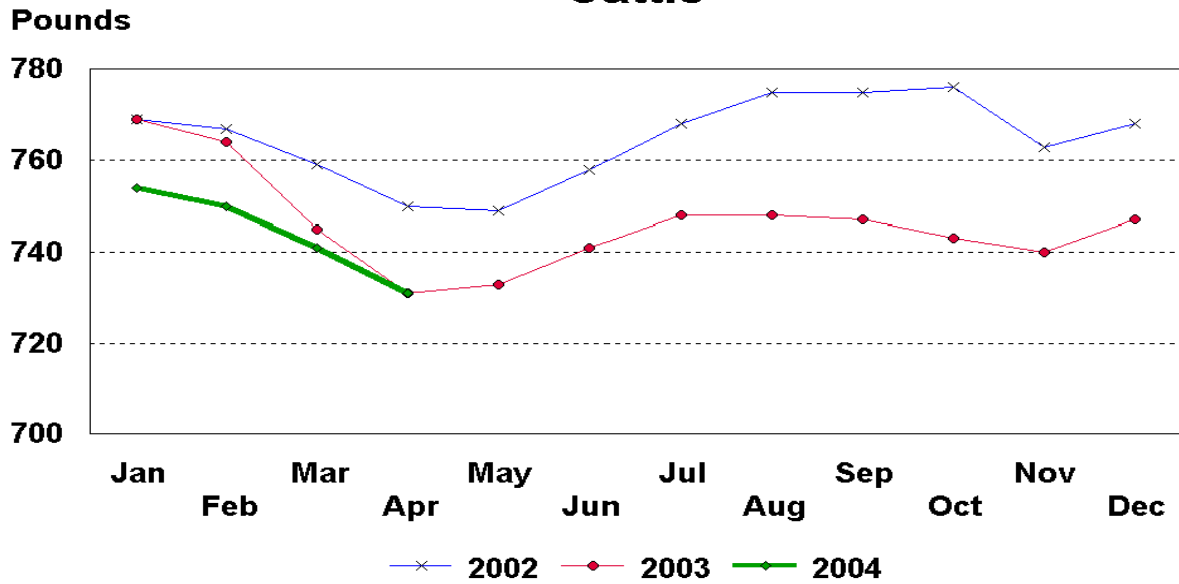
U.S. Monthly Commercial Slaughter Average Live Weight Cattle



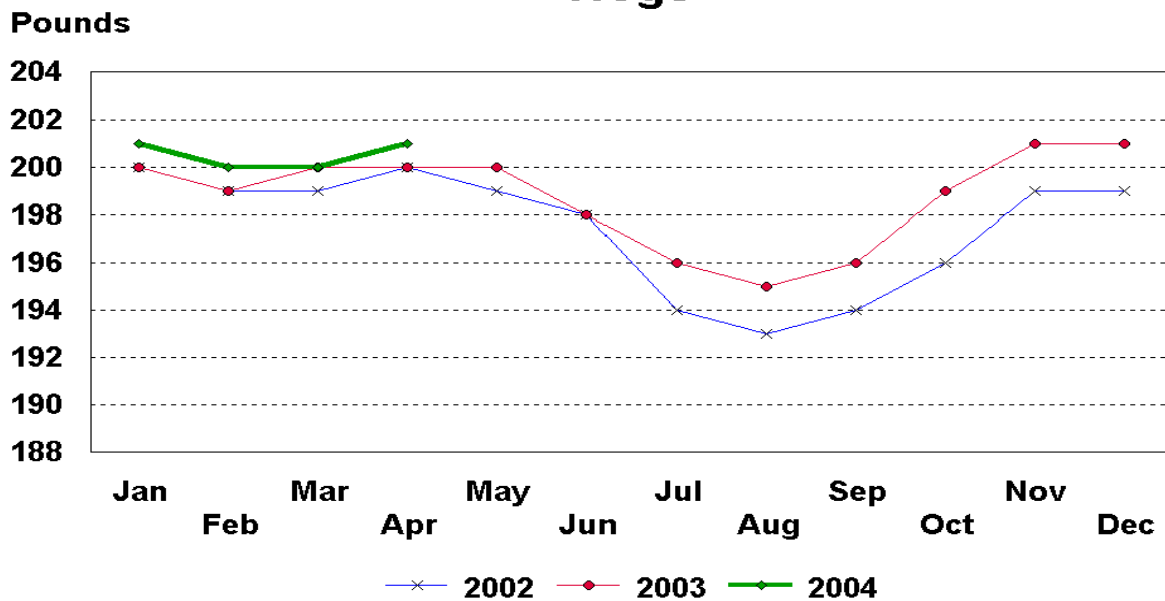
U.S. Monthly Commercial Slaughter Average Live Weight Hogs



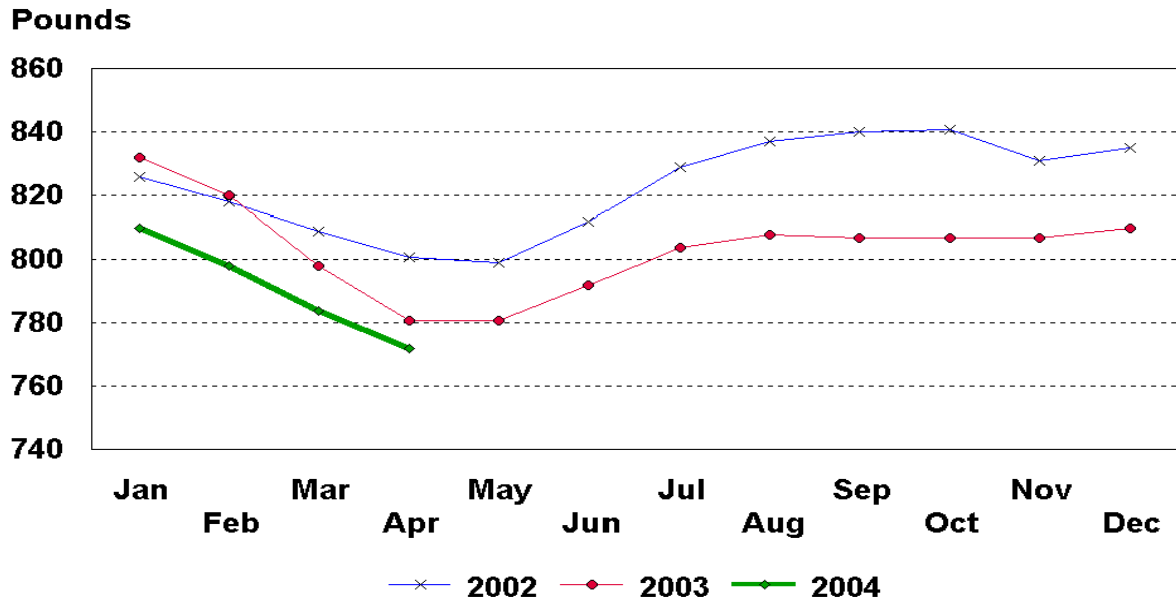
U.S. Monthly Federally Inspected Average Dressed Weight Cattle



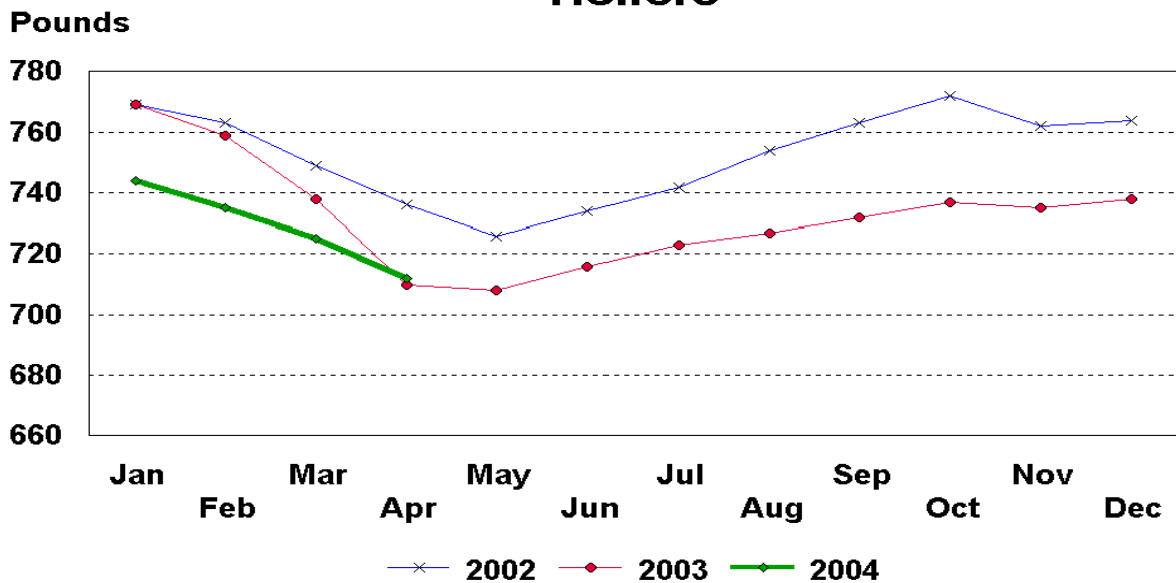
U.S. Monthly Federally Inspected Average Dressed Weight Hogs



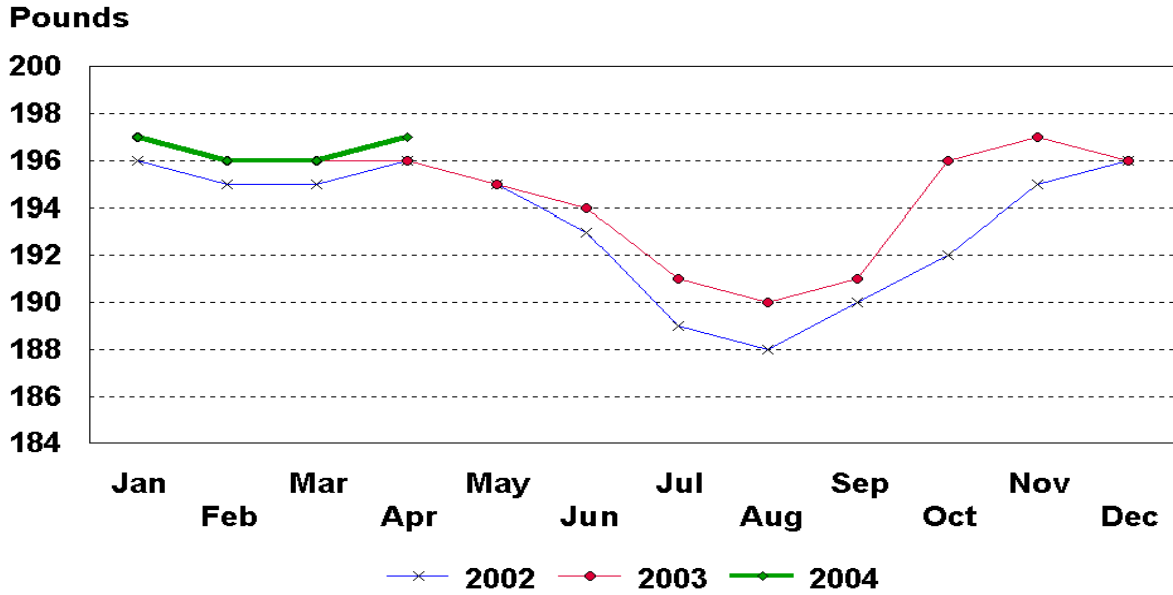
U.S. Monthly Federally Inspected Average Dressed Weight Steers



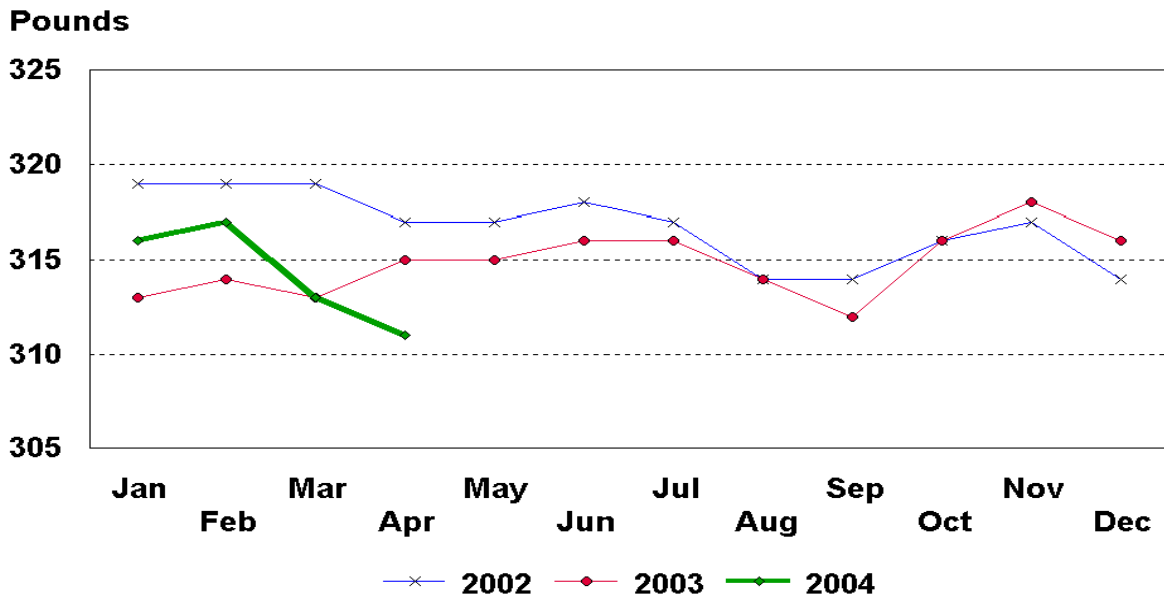
U.S. Monthly Federally Inspected Average Dressed Weight Heifers



U.S. Monthly Federally Inspected Average Dressed Weight Barrows and Gilts



U.S. Monthly Federally Inspected Average Dressed Weight Sows



Livestock Slaughter Estimates

Data Sources: Primary data for the commercial livestock slaughter estimates are obtained from the **Weekly Livestock Slaughter Report** (LS-149) questionnaires completed by inspectors from the Food Safety and Inspection Service (FSIS), USDA, which provide actual counts of animals slaughtered in Federally Inspected (FI) plants. These counts are combined with data from State-administered Non-Federally Inspected (NFI) slaughter plants to derive total commercial slaughter estimates. Over 95 percent of the total U.S. slaughter for any species is under FI. Number of head slaughtered daily under FI are recorded on the LS-149 forms by species and class. Head kill excluding animals condemned and total live and dressed weights are also given.

There are 850 plants in the U.S. operating under Federal Inspection and over 2,200 plants under State inspection. Slaughter from State-inspected Talmedge-Aiken plants is included in FI totals (see Types of Plants, page 22). To prevent duplication in reporting between NFI and FI plants and assure all FI plants are included, certificates prepared by FSIS identifying operating status are constantly monitored.

Revision Policy: Revisions are generally the result of late or corrected data and are less than one-half of 1 percent. Revisions for the previous month and the year-to-date totals are noted in each monthly release by an (*) or a footnote. Final data are published in the annual summary.

Procedures and Reliability: Individual inspectors may be contacted by telephone if the LS-149 is not received by NASS in time for summarization. This assures that all plants slaughtering a large number of head or several species are accounted for each week.

All head kill data are tabulated on a weekly basis approximately two weeks after the kill week. A computer edit compares each plant's data with the historical data for that plant. The edit provides a missing reports listing for follow-up telephone contact and imputes missing weight data. In addition, data are checked for unusual values for species, class, head kill, and pattern of kill, generally based on each plant's past operating profile.

If no form is received by mail or other means, data for plants slaughtering fewer than 50 total head weekly of only one species are imputed. Imputation of live and dressed weights may also be necessary on partially completed forms for any plant. The imputation is also based on the history of each respective plant and represents the recent operating characteristics until final data are tabulated. Imputed head kill for missing plants usually is less than 1 percent of the U.S. head kill totals. Imputation for live and dressed weight data for cattle is usually less than 10 percent and for hogs about 7 percent. The imputation for calves and sheep is more frequent and variable.

Head kill for FI slaughter before condemnation is for the actual days of the survey month, while head kill after condemnation and live and dressed weight data are for full weeks only. Average live and dressed weights and dressing percentages by State are compared with the

previous week as an additional check. Fluctuations are frequently the result of plants permanently or temporarily closing and a shift in the species reported.

FI data are summarized weekly and accumulated to a monthly total for this release, while NFI data are summarized monthly only. These weekly totals are published by USDA's Agricultural Marketing Service (AMS) in **Livestock, Meat, Wool Market News**, Weekly Summary, and Statistics.

Livestock slaughter estimates are based on a census of operating plants and therefore, have no sampling error. However, they may be subject to errors such as omissions, duplications and mistakes in reporting, recording and processing the data. These errors are minimized through rigid quality controls in the edit and summarization process, and a careful review of all reported data for consistency and reasonableness.

No data are published, unless permission is granted, if less than three plants slaughter a species in a State or if one plant has 60 percent or more of the total commercial slaughter for a species. If not published, these data are included in U.S. totals. A review of the data is made annually to determine publishibility.

Types of Plants

There are generally **four types** of slaughtering plants.

- (1) **Federally Inspected (FI) Plants:** Plants that transport meat interstate must employ federal inspectors to assure compliance with USDA standards. Any State whose commercial plants operate entirely under federal inspection may still have custom-exempt establishments for which NFI estimates are made.
- (2) **Talmedge-Aiken (TA) Plants:** Slaughter plants in which USDA is responsible for inspection. However, federal inspection is carried out by State employees. These plants are considered to be federally inspected.
- (3) **Non-Federally Inspected (NFI) Plants:** Plants which sell and transport only intrastate. State inspectors assure compliance with individual State standards for these NFI plants. Mobile slaughtering units are excluded and are considered farm slaughter.
- (4) **Custom-Exempt Plants:** Plants that do not sell meat but operate on a custom basis only are custom-exempt. The animals and meat are not inspected, but the facilities must meet health standards. These are considered NFI plants and head kill is included in NFI totals.

Terms and Definitions

Commercial Production: Includes slaughter and meat production in federally inspected and other plants, but excludes animals slaughtered on farms.

Dressed Weight: The weight of a chilled animal carcass. Beef with kidney knob in; veal with hide off; lamb and mutton with pluck out; pork with leaf fat and kidneys out, jowls on and head off.

Dressing Percent: Usually expressed as a percentage yield of chilled carcass in relation to the weight of the live animal on hoof. For example, a live hog that weighed 200 pounds on hoof and yielded a carcass weighing 140 pounds would have a dressing percentage of 70.

Food and Meat Inspection: Includes examination, checking, or testing of a carcass and/or meat against established government standards and involves checking the facility for cleanliness, health of animals, or parts of animals and quality of the meat produced.

Live Weight: The gross weight of a live animal when received at the slaughter plant.

Plant, Slaughter: An establishment where animals are killed and butchered.

Red Meat: Red meat production is the carcass weight after slaughter including beef, veal, pork, and lamb and mutton. It is derived using the number of head times average dressed weight for FI and NFI separately. FI head kill must be adjusted for condemnations using the factor derived from the FSIS inspection reports.

The FI meat production formula is $(\text{FI head kill}) \times (1 - \text{condemnation factor}) \times (\text{average dressed weight}) = \text{FI red meat production}$. The condemnation factor is the number of animals condemned as a percentage of the total kill. It has been fairly stable for the last five years; running about 1.90 head per 100 head for calves, .5 per 100 for cattle, .40 per 100 for hogs and .20 per 100 for sheep. The NFI meat production formula is $(\text{NFI head kill}) \times (\text{live weight}) \times (\text{FI dressing percentage}) = \text{NFI red meat production}$.

Slaughter: Killing and butchering of animals primarily for food.

Slaughter, Farm: Animals slaughtered on farms primarily for home consumption. Excludes custom slaughter for farmers at commercial establishments, but includes mobile slaughtering on farms. These estimates appear only in the annual slaughter release.

Wholesome Meat Act: Legislation that specifies that all meat produced for sale in the U.S. must be inspected. Meat that is transported interstate must be inspected in compliance with Federal (USDA) Standards.

Index

	Page
Commercial Calf Slaughter, Number, Total, and Average Live weight, by State and U.S.	6
Commercial Cattle Slaughter, Number, Total, and Average Live weight, by State and U.S.	5
Commercial Hog Slaughter, Number, Total and Average Live weight, by State and U.S.	7
Commercial Red Meat Production, by State and U.S.	4
Commercial Sheep and Lamb Slaughter, Number, Total, and Average Live weight, by State and U.S.	8
Data Sources, Revision Policy, and Procedures and Reliability	21
Federally Inspected Classification of Number and Average Dressed Weight, by Species and Class and U.S.	9
Federally Inspected Number by Species and Class, by Regions and U.S.	10
Federally Inspected Number by Species and Class, by State and U.S.	12
Federally Inspected Percent of Total Commercial, by Species, U.S.	14
Livestock Slaughter, Number and Average Weights, by Species and Type of Slaughter, U.S.	3
Red Meat Production, Commercial and FI, by Class, U.S	2
Terms and Definitions	23
Types of Plants	22

ACCESS TO REPORTS!!

For your convenience, there are several ways to obtain NASS reports, data products, and services:

INTERNET ACCESS

All NASS reports are available free of charge on the worldwide Internet. For access, connect to the Internet and go to the NASS Home Page at: <http://www.usda.gov/nass/>. Select "Today's Reports" or Publications and then Reports Calendar or Publications and then Search, by Title or Subject.

E-MAIL SUBSCRIPTION

All NASS reports are available by subscription free of charge direct to your e-mail address. Starting with the NASS Home Page at <http://www.usda.gov/nass/>, click on **Publications**, then click on the **Subscribe by E-mail** button which takes you to the page describing e-mail delivery of reports. Finally, click on **Go to the Subscription Page** and follow the instructions.

PRINTED REPORTS OR DATA PRODUCTS

CALL OUR TOLL-FREE ORDER DESK: 800-999-6779 (U.S. and Canada)
Other areas, please call 703-605-6220 FAX: 703-605-6900
(Visa, MasterCard, check, or money order acceptable for payment.)

ASSISTANCE

For **assistance** with general agricultural statistics or further information about NASS or its products or services, contact the **Agricultural Statistics Hotline** at **800-727-9540**, 7:30 a.m. to 4:00 p.m. ET, or e-mail: nass@nass.usda.gov.

The United States Department of Agriculture (USDA) prohibits discrimination in all its programs on the basis of race, color, national origin, gender, religion, age, disability, political beliefs, sexual orientation, and marital or family status. (Not all prohibited bases apply to all programs.) Persons with disabilities who require alternative means for communication of program information (braille, large print, audiotape, etc.) should contact the USDA's TARGET Center at 202-720-2600 (voice and TDD).

To file a complaint of discrimination, write USDA, Director, Office of Civil Rights, Room 326-W, Whitten Building, 1400 Independence Avenue, SW, Washington, D.C., 20250-9410, or call 202-720-5964 (voice or TDD). USDA is an equal opportunity provider and employer.