



Livestock Slaughter

Released December 23, 2004, by the National Agricultural Statistics Service (NASS), Agricultural Statistics Board, U.S. Department of Agriculture. For information on *Livestock Slaughter* call Faye Propsom at (515) 284-4340, office hours 8:00 a.m. to 4:30 p.m. CT.

Pork Production At Record Monthly High for November

Commercial red meat production for the United States totaled 3.77 billion pounds in November, up 7 percent from the 3.53 billion pounds produced in November 2003.

Beef production, at 1.94 billion pounds, was 9 percent above the previous year. Cattle slaughter totaled 2.54 million head, up 4 percent from November 2003. The average live weight was up 35 pounds from the previous year, at 1,271 pounds.

Veal production totaled 13.8 million pounds, 9 percent below November a year ago. Calf slaughter totaled 68,000 head, down 13 percent from November 2003. The average live weight was 14 pounds above last year, at 336 pounds.

Pork production totaled 1.80 billion pounds, a new monthly record, and was up 5 percent from the previous year. Hog kill totaled 8.96 million head, 4 percent above November 2003. The average live weight was 1 pound above the previous year, at 270 pounds.

Lamb and mutton production, at 16.5 million pounds, was up 1 percent from November 2003. Sheep slaughter totaled 242,100 head, 3 percent above last year. The average live weight was 136 pounds, down 2 pounds from November a year ago.

January to November 2004 commercial red meat production was 41.5 billion pounds, down 3 percent from 2003. Accumulated beef production was down 7 percent from last year, veal was down 12 percent, pork was up 3 percent from last year, and lamb and mutton production was down 3 percent.

November 2003 contained 20 weekdays (including two holidays) and 5 Saturdays.
November 2004 contained 22 weekdays (including two holidays) and 4 Saturdays.

Commercial Red Meat Production: United States ¹

Class	Nov 2003	Oct 2004	Nov 2004	Nov 04 % of		Jan - Nov ²		
				Nov 2003	Oct 2004	2003	2004	04 as % of 03
	<i>Million Pounds</i>	<i>Million Pounds</i>	<i>Million Pounds</i>	<i>Percent</i>	<i>Percent</i>	<i>Million Pounds</i>	<i>Million Pounds</i>	<i>Percent</i>
Beef	1,783	2,114	1,943	109	92	24,261	22,506	93
Veal	15.2	12.4	13.8	91	111	172.7	152.2	88
Pork	1,718	1,779	1,797	105	101	18,077	18,650	103
Lamb & Mutton	16.3	16.3	16.5	101	101	181.7	176.8	97
Total Red Meat	3,533	3,921	3,771	107	96	42,692	41,485	97

¹ Based on packers' dressed weights and excludes farm slaughter.

² Accumulated totals and percentages based on unrounded data.

Federally Inspected Red Meat Production: United States ¹

Class	Nov 2003	Oct 2004	Nov 2004	Nov 04 % of		Jan - Nov ²		
				Nov 2003	Oct 2004	2003	2004	04 as % of 03
	<i>Million Pounds</i>	<i>Million Pounds</i>	<i>Million Pounds</i>	<i>Percent</i>	<i>Percent</i>	<i>Million Pounds</i>	<i>Million Pounds</i>	<i>Percent</i>
Beef	1,755	*2,081	1,913	109	92	23,933	22,183	93
Veal	14.7	11.9	13.3	90	112	167.0	147.6	88
Pork	1,703	1,764	1,782	105	101	17,887	18,483	103
Lamb & Mutton	15.6	15.5	15.8	101	101	173.5	168.9	97
Total Red Meat	3,488	3,872	3,724	107	96	42,160	40,982	97

* Revised.

¹ Based on packers' dressed weights and excludes farm slaughter.

² Accumulated totals and percentages based on unrounded data.

Livestock Slaughter: Number and Average Weights, United States ¹

Species	Unit	Nov 2003	Oct 2004	Nov 2004	Nov 04 % of		Jan - Nov ²		
					Nov 2003	Oct 2004	2003	2004	04 % of 03
					<i>Percent</i>	<i>Percent</i>			<i>Prcnt</i>
Cattle No.									
Fed. Insp.	Thou	2,387.0	*2,693.0	2,491.6	104	93	32,280.9	29,515.8	91
Other	Thou	46.5	52.7	49.4	106	94	537.1	516.3	96
Comm'l. ³	Thou	2,433.5	2,745.7	2,541.0	104	93	32,818.1	30,032.0	92
Live Wt/Hd									
Fed. Insp.	Lbs	1,240	1,270	1,274	103	100	1,232	1,240	101
Other	Lbs	1,077	1,113	1,089	101	98	1,092	1,108	101
Comm'l.	Lbs	1,236	1,267	1,271	103	100	1,230	1,238	101
Calves No.									
Fed. Insp.	Thou	76.2	*60.6	66.1	87	109	881.0	750.1	85
Other	Thou	1.9	2.0	1.9	99	96	22.4	18.6	83
Comm'l. ³	Thou	78.1	62.5	68.0	87	109	903.4	768.7	85
Live Wt/Hd									
Fed. Insp.	Lbs	317	329	335	106	102	315	329	104
Other	Lbs	413	422	416	101	99	425	416	98
Comm'l.	Lbs	322	330	336	104	102	317	330	104
Hogs No.									
Fed. Insp.	Thou	8,506.1	*8,881.8	8,873.1	104	100	90,444.4	93,202.0	103
Other	Thou	91.4	88.6	90.5	99	102	1,125.3	994.7	88
Comm'l. ³	Thou	8,597.4	*8,970.4	8,963.6	104	100	91,569.7	94,196.6	103
Live Wt/Hd									
Fed. Insp.	Lbs	270	267	270	100	101	266	266	100
Other	Lbs	236	235	233	99	99	232	232	100
Comm'l.	Lbs	269	267	270	100	101	266	266	100
Sheep&Lambs No.									
Fed. Insp.	Thou	222.8	228.3	228.2	102	100	2,559.2	2,447.6	96
Other	Thou	13.4	13.0	14.0	105	107	157.6	147.6	94
Comm'l. ³	Thou	236.1	241.4	242.1	103	100	2,716.8	2,595.2	96
Live Wt/Hd									
Fed. Insp.	Lbs	139	135	138	99	102	135	138	102
Other	Lbs	105	117	111	106	95	105	108	102
Comm'l.	Lbs	138	*135	136	99	101	133	136	102

* Revised.

¹ Excludes slaughter on farms.

² Accumulated totals and percentages based on unrounded data.

³ Totals may not equal sum of the parts due to rounding.

Commercial Red Meat Production: By State and United States ¹

State	Nov 2003	Oct 2004	Nov 2004	Nov 04 as % of ²	
				Nov 2003	Oct 2004
	<i>Million Pounds</i>	<i>Million Pounds</i>	<i>Million Pounds</i>	<i>Percent</i>	<i>Percent</i>
AL	3.3	2.9	2.8	83	96
AK	0.1	0.1	0.1	167	162
AZ	28.9	*26.4	27.8	96	105
AR	5.6	4.9	5.8	103	119
CA	109.9	117.7	121.7	111	103
CO	125.3	168.9	149.2	119	88
DE-MD	2.5	2.7	3.0	121	110
FL	5.1	4.7	4.7	92	101
GA	15.7	15.9	15.2	97	96
HI	0.8	0.8	0.8	104	99
ID	42.2	40.6	38.7	92	95
IL	202.2	230.8	233.1	115	101
IN	121.6	123.5	127.6	105	103
IA	568.0	564.7	561.4	99	99
KS	387.4	489.5	426.7	110	87
KY	46.2	41.2	42.6	92	103
LA	1.2	1.1	1.1	97	101
MI	28.5	31.9	31.4	110	99
MN	191.8	194.3	198.3	103	102
MS	24.3	*29.7	27.1	111	91
MO	37.8	43.0	37.6	100	87
MT	1.1	1.4	1.3	112	93
NE	493.5	605.5	564.0	114	93
NV	0.1	0.1	0.1	117	88
N ENG ³	1.7	*1.3	1.4	80	102
NJ	4.3	4.0	4.3	101	108
NM	1.0	0.7	0.6	62	85
NY	3.6	3.2	3.1	86	97
NC	189.1	190.0	202.0	107	106
ND	2.5	3.0	2.6	107	89
OH	26.5	26.7	27.7	105	104
OK	83.8	89.1	86.4	103	97
OR	3.2	3.4	3.6	111	105
PA	97.1	93.1	92.7	96	100
SC	19.4	21.0	20.9	108	100
SD	80.9	94.2	92.6	114	98
TN	19.1	18.3	19.5	102	106
TX	326.5	386.5	353.4	108	91
UT	27.8	33.3	32.0	115	96
VA	66.1	66.1	68.8	104	104
WA	44.6	43.6	41.5	93	95
WV	0.8	1.0	0.9	110	94
WI	91.1	*100.1	94.2	103	94
WY	0.5	0.3	0.6	122	189
US	3,532.7	*3,921.3	3,771.0	107	96

* Revised.

¹ Includes total beef, veal, pork, lamb, and mutton.

² Percentages based on unrounded data.

³ N ENG includes CT, ME, MA, NH, RI, and VT.

**Commercial Cattle Slaughter: By State and United States,
November 2003 and 2004 ¹**

State	Number Slaughtered		Total Live Weight		Average Live Weight	
	2003	2004	2003	2004	2003	2004
	<i>1,000 Head</i>	<i>1,000 Head</i>	<i>1,000 Pounds</i>	<i>1,000 Pounds</i>	<i>Pounds</i>	<i>Pounds</i>
AL						
AK	0.1	0.1	89	135	1,044	1,099
AZ	37.4	35.7	50,332	47,785	1,345	1,340
AR	1.2	0.9	1,101	859	899	958
CA	103.6	111.5	132,891	149,666	1,283	1,343
CO	155.3	175.1	191,862	224,816	1,236	1,284
DE-MD	2.7	3.4	3,467	4,112	1,262	1,224
FL	7.7	6.9	8,348	7,499	1,084	1,094
GA	22.3	21.1	26,869	24,628	1,203	1,164
HI	0.8	0.9	840	878	1,054	1,005
ID	56.6	50.9	70,677	63,854	1,249	1,256
IL						
IN						
IA						
KS	494.0	530.3	604,623	671,778	1,224	1,267
KY	2.9	1.2	2,711	1,072	938	878
LA	1.1	1.0	1,006	958	884	936
MI	32.9	34.8	43,354	47,184	1,318	1,355
MN	65.4	63.2	87,057	87,305	1,332	1,381
MS	0.2	4.1	143	4,341	799	1,051
MO						
MT	1.3	1.5	1,527	1,705	1,133	1,132
NE	495.0	542.8	629,688	721,581	1,272	1,329
NV	0.1	0.1	92	109	1,016	1,001
N ENG ²	2.1	1.5	2,126	1,516	1,020	981
NJ	2.3	2.2	2,608	2,702	1,141	1,241
NM	2.1	0.9	1,872	900	900	962
NY	4.4	3.8	4,562	4,105	1,046	1,077
NC	16.9	19.0	18,081	19,025	1,071	1,003
ND						
OH	11.7	10.6	13,717	11,894	1,170	1,120
OK	2.5	2.1	2,469	2,218	991	1,039
OR	1.3	1.6	1,433	1,835	1,114	1,150
PA	78.0	65.5	99,570	77,604	1,276	1,184
SC						
SD						
TN	1.4	1.3	1,249	1,218	906	905
TX	438.9	471.8	519,090	565,083	1,183	1,198
UT	36.4	41.8	43,602	50,645	1,197	1,213
VA	1.3	1.1	1,274	1,098	969	972
WA	58.6	53.6	73,052	67,406	1,247	1,258
WV	1.3	1.3	1,200	1,249	930	947
WI	118.5	112.6	151,050	150,580	1,275	1,337
WY	0.6	0.7	662	802	1,165	1,175
US ³	2,433.5	2,541.0	3,008,512	3,228,842	1,236	1,271

¹ Includes slaughter under Federal inspection and other Commercial slaughter, excludes farm slaughter.

² N ENG includes CT, ME, MA, NH, RI, and VT.

³ States with no data printed are still included in the US total, data not printed to avoid disclosing individual operations. Accumulated totals and percentages based on unrounded data.

**Commercial Calf Slaughter: By State and United States,
November 2003 and 2004 ¹**

State	Number Slaughtered		Total Live Weight		Average Live Weight	
	2003	2004	2003	2004	2003	2004
	<i>1,000 Head</i>	<i>1,000 Head</i>	<i>1,000 Pounds</i>	<i>1,000 Pounds</i>	<i>Pounds</i>	<i>Pounds</i>
AL						
AK						
AZ						
AR						
CA	8.7	8.5	1,739	1,203	200	142
CO						
DE-MD	0.1	0.1	20	30	282	256
FL						
GA						
HI						
ID						
IL	7.0	7.7	3,047	3,489	437	453
IN	0.7	0.6	84	76	126	127
IA						
KS						
KY						
LA	0.9	0.8	417	380	483	478
MI	1.9	2.0	856	852	448	428
MN						
MS						
MO						
MT						
NE						
NV						
N ENG ²	1.9	0.5	222	93	117	173
NJ	9.5	6.8	3,346	2,944	353	434
NM						
NY	10.7	9.2	1,276	776	119	84
NC	0.1	0.1	74	60	514	495
ND						
OH	5.9	6.7	2,470	2,681	416	402
OK	0.1	0.1	38	24	479	447
OR						
PA	14.7	14.3	5,138	5,534	350	386
SC						
SD						
TN	0.1	0.1	46	57	457	450
TX	2.0	1.1	1,082	633	528	585
UT						
VA						
WA						
WV						
WI	10.6	8.0	4,622	3,657	437	455
WY						
US ³	78.1	68.0	25,110	22,843	322	336

¹ Includes slaughter under Federal inspection and other Commercial slaughter, excludes farm slaughter.

² N ENG includes CT, ME, MA, NH, RI, and VT.

³ States with no data printed are still included in the US total, data not printed to avoid disclosing individual operations. Accumulated totals and percentages based on unrounded data.

**Commercial Hog Slaughter: By State and United States,
November 2003 and 2004 ¹**

State	Number Slaughtered		Total Live Weight		Average Live Weight	
	2003	2004	2003	2004	2003	2004
	<i>1,000 Head</i>	<i>1,000 Head</i>	<i>1,000 Pounds</i>	<i>1,000 Pounds</i>	<i>Pounds</i>	<i>Pounds</i>
AL	9.3	9.2	4,749	4,327	510	470
AK						
AZ	0.2	0.4	49	42	260	118
AR						
CA	194.2	209.8	47,084	52,291	242	249
CO	1.0	0.9	272	242	279	259
DE-MD	1.6	1.9	430	504	271	262
FL	8.8	8.2	1,537	1,421	175	174
GA	11.8	13.5	2,851	3,255	241	241
HI	2.2	2.3	457	472	206	205
ID						
IL	717.7	796.2	199,465	221,044	278	278
IN	598.9	629.3	158,916	167,372	265	266
IA	2,562.4	2,580.3	690,052	698,156	269	271
KS	26.9	13.3	8,796	6,108	328	459
KY	227.8	208.7	60,065	56,122	264	269
LA	2.1	2.3	398	419	192	181
MI	9.5	11.0	3,732	4,411	392	400
MN	742.3	771.2	197,421	205,214	266	266
MS						
MO	171.7	171.4				
MT	1.2	1.3	300	325	248	250
NE	569.1	597.0	153,138	160,664	269	269
NV						
N ENG ²	2.0	2.0	522	481	262	239
NJ	7.9	9.7	766	982	97	101
NM	0.3	0.2	63	69	213	317
NY	2.6	2.8	591	626	226	225
NC	929.5	986.1	239,685	255,701	258	259
ND	13.0	13.5	3,026	3,208	233	237
OH	90.2	98.5	24,850	27,386	275	278
OK	398.3	405.5	110,841	113,705	278	280
OR	14.7	17.6	3,809	4,059	259	231
PA	219.5	237.9	56,022	58,813	255	247
SC						
SD	377.3	444.4	99,042	115,247	263	259
TN	57.3	58.0	27,822	27,900	485	481
TX	32.6	35.3	10,021	9,493	308	269
UT	4.4	2.2	980	500	222	232
VA	335.3	348.6	86,769	90,347	259	259
WA	1.6	1.8	409	461	261	257
WV	1.0	0.9	246	259	253	279
WI	32.8	38.9	14,444	17,873	440	459
WY	0.3	0.3	82	94	287	273
US ³	8,597.4	8,963.6	2,316,151	2,416,669	269	270

¹ Includes slaughter under Federal inspection and other Commercial slaughter, excludes farm slaughter.

² N ENG includes CT, ME, MA, NH, RI, and VT.

³ States with no data printed are still included in the US total, data not printed to avoid disclosing individual operations. Accumulated totals and percentages based on unrounded data.

**Commercial Sheep and Lamb Slaughter: By State and United States,
November 2003 and 2004 ¹**

State	Number Slaughtered		Total Live Weight		Average Live Weight	
	2003	2004	2003	2004	2003	2004
	<i>1,000 Head</i>	<i>1,000 Head</i>	<i>1,000 Pounds</i>	<i>1,000 Pounds</i>	<i>Pounds</i>	<i>Pounds</i>
AL						
AK						
AZ	0.1	0.1	8	9	95	64
AR						
CA						
CO	62.2	91.6	9,329	14,112	150	154
DE-MD	2.3	3.2	261	310	113	98
FL	0.1	0.2	11	10	86	62
GA	0.5	0.6	55	61	115	111
HI						
ID	0.4	0.4	41	44	114	115
IL	14.4	17.5	1,984	2,374	138	135
IN	2.1	2.4	227	268	109	110
IA	34.3	29.9	5,191	4,366	151	146
KS	0.3	0.3	31	27	103	107
KY	0.9	0.9	111	103	121	120
LA	0.1	0.1	8	8	70	81
MI	15.3	15.8	1,870	1,872	122	119
MN	0.2	0.2	21	29	114	124
MS						
MO	0.4	0.4	43	42	104	108
MT	0.3	0.3	38	43	127	124
NE	0.1	0.1	8	11	117	125
NV	0.1	0.2	11	18	100	107
N ENG ²	2.1	2.1	210	200	102	95
NJ	9.5	10.7	890	883	94	83
NM	1.5	1.5	157	306	102	200
NY	2.7	3.1	264	248	98	81
NC	0.7	0.5	67	39	103	86
ND						
OH	1.3	1.2	146	124	114	105
OK	0.1	0.1	9	9	121	118
OR	1.0	1.4	144	150	138	105
PA	6.3	5.1	684	460	109	90
SC						
SD	1.1	1.1	130	134	120	121
TN	0.6	0.6	42	47	70	81
TX	27.0	19.5	3,581	2,362	132	121
UT	2.6	2.6	353	339	135	130
VA	0.8	0.4	77	50	101	122
WA	0.2	0.3	33	39	141	148
WV		0.1		5		94
WI	1.0	0.8	139	113	133	134
WY	0.2	0.1	21	16	135	131
US ³	236.1	242.1	32,538	32,934	138	136

¹ Includes slaughter under Federal inspection and other Commercial slaughter, excludes farm slaughter.

² N ENG includes CT, ME, MA, NH, RI, and VT.

³ States with no data printed are still included in the US total, data not printed to avoid disclosing individual operations. Accumulated totals and percentages based on unrounded data.

**Classification of Livestock Slaughtered Under Federal Inspection:
United States**

Item	Nov	Oct	Nov	Jan - Nov ¹		Nov	Oct	Nov	Jan - Nov ¹	
	2003	2004	2004	2003	2004	2003	2004	2004	2003	2004
	<i>1,000 Head</i>	<i>1,000 Head</i>	<i>1,000 Head</i>	<i>1,000 Head</i>	<i>1,000 Head</i>	<i>Percent of Total</i>	<i>Percent of Total</i>	<i>Percent of Total</i>	<i>Percent of Total</i>	<i>Percent of Total</i>
Class ²										
Cattle										
Steers	1,100	1,304	1,206	15,922	14,903	46.1	48.4	48.4	49.3	50.5
Heifers	736	909	804	10,279	9,495	30.8	33.8	32.3	31.8	32.2
All Cows	499	432	440	5,499	4,607	20.9	16.0	17.7	17.0	15.7
Dairy Cows	231	197	192	2,615	2,140	9.7	7.3	7.7	8.1	7.3
Other Cows	268	235	248	2,884	2,467	11.2	8.7	10.0	8.9	8.4
Bulls & Stags	52	48	41	580	510	2.2	1.8	1.6	1.8	1.7
Total ¹	2,387	2,693	2,492	32,281	29,516	100.0	100.0	100.0	100.0	100.0
Hogs										
Barrows & Gilts	8,243	8,598	8,579	87,289	89,973	96.9	96.8	96.7	96.5	96.5
Sows	245	264	270	2,934	2,995	2.9	3.0	3.0	3.2	3.2
Stags & Boars	18	20	25	221	234	0.2	0.2	0.3	0.2	0.3
Total ¹	8,506	8,882	8,873	90,444	93,202	100.0	100.0	100.0	100.0	100.0
Sheep										
Mature Sheep	11	12	12	132	137	5.1	5.3	5.1	5.1	5.6
Lambs & Yrlngs	211	216	217	2,428	2,311	94.9	94.7	94.9	94.9	94.4
Total ¹	223	228	228	2,559	2,448	100.0	100.0	100.0	100.0	100.0
Average Dressed Weight ³										
	<i>Pounds</i>	<i>Pounds</i>	<i>Pounds</i>	<i>Pounds</i>	<i>Pounds</i>					
Cattle										
Steers ⁴	739	777	772	746	756					
Heifers ⁴	807	834	832	802	805					
All Cows ⁴	735	765	764	732	738					
Bulls & Stags ⁴	583	610	610	589	613					
	873	878	871	906	895					
Calves & Vealers	196	202	206	193	201					
Hogs										
Barrow Gilts ⁵	201	199	202	199	199					
Sows ⁵	197	196	198	194	195					
Stags & Boars ⁵	318	313	314	315	313					
	243	218	207	241	220					
Sheep										
Mature Sheep ⁶	70	68	69	68	69					
Lamb & Yrlngs ⁶	68	64	65	66	66					
	70	68	69	68	69					

¹ Total and percentages based on unrounded data.

² Species totals and classification reported by meat inspectors, Inspection Operations, FSIS.

³ Based on packer reports.

⁴ Included in cattle average dressed weight.

⁵ Included in hog average dressed weight.

⁶ Included in sheep average dressed weight.

**Federally Inspected Slaughter: By Region and United States,
November 2004¹**

Standard Federal Regions	Cattle							Calves
	Total ²	Steers	Heifers	Cows			Bulls & Stags	Total
				All	Dairy	Other		
	<i>1,000 Head</i>	<i>1,000 Head</i>	<i>1,000 Head</i>	<i>1,000 Head</i>	<i>1,000 Head</i>	<i>1,000 Head</i>	<i>1,000 Head</i>	<i>1,000 Head</i>
1	1.1	0.5	0.2	0.2	0.1		0.2	0.5
2	5.8	1.7	0.4	3.2	3.0	0.2	0.4	16.0
3	67.7	24.1	5.7	35.5	28.8	6.7	2.3	14.4
4	63.9	1.0	0.3	54.1	11.1	43.0	8.5	0.9
5	287.0	111.1	43.3	125.5	64.2	61.3	7.2	24.8
6	468.6	235.4	166.7	57.7	11.6	46.1	8.9	0.8
7	1,119.7	597.3	461.2	55.5	2.8	52.7	5.7	
8	226.7	121.8	89.2	13.9	3.3	10.6	1.8	
9	146.9	69.1	6.4	68.1	57.3	10.8	3.2	8.2
10	104.2	44.4	30.9	26.5	9.6	16.9	2.4	0.4
US ²	2,491.6	1,206.4	804.3	440.2	191.9	248.3	40.7	66.1
	Hogs				Sheep			
	Total ²	Barrows & Gilts	Sows	Stags & Boars	Total ²	Mature Sheep	Lambs & Yearlings	
	<i>1,000 Head</i>	<i>1,000 Head</i>	<i>1,000 Head</i>	<i>1,000 Head</i>	<i>1,000 Head</i>	<i>1,000 Head</i>	<i>1,000 Head</i>	
1	1.4	1.4			1.8	0.4	1.5	
2	12.2	12.0	0.2	0.1	12.7	1.3	11.3	
3	587.0	585.3	1.7	0.1	8.5	0.3	8.2	
4	1,458.1	1,371.9	84.5	1.7	2.7	1.2	1.6	
5	2,311.5	2,205.2	104.3	2.0	34.0	4.8	29.1	
6	449.8	422.7	27.0	0.2	16.6	0.8	15.8	
7	3,355.6	3,286.6	48.5	20.5	30.4	0.3	30.1	
8	458.8	455.5	3.3		94.6	1.7	92.9	
9	205.8	205.7	0.1		25.3	0.7	24.6	
10	32.7	32.7	0.1		1.6	0.1	1.5	
US ²	8,873.1	8,578.9	269.5	24.6	228.2	11.6	216.6	

¹ States included in regions are as follows: 1- CT, ME, NH, VT, MA, & RI; 2- NY & NJ; 3- DE-MD, PA, WV, & VA; 4- AL, FL, GA, KY, MS, NC, SC, & TN; 5- IL, IN, MI, MN, OH, & WI; 6- AR, LA, NM, OK, & TX; 7- IA, KS, MO, & NE; 8- CO, MT, ND, SD, UT, & WY; 9- AZ, CA, HI & NV; 10- AK, ID, OR, & WA.

² Totals may not add due to rounding.

**Federally Inspected Slaughter: By Region and United States,
January - November 2004 * ¹**

Standard Federal Regions	Cattle							Calves
	Total ²	Steers	Heifers	Cows			Bulls & Stags	Total
				All	Dairy	Other		
	<i>1,000 Head</i>	<i>1,000 Head</i>	<i>1,000 Head</i>	<i>1,000 Head</i>	<i>1,000 Head</i>	<i>1,000 Head</i>	<i>1,000 Head</i>	<i>1,000 Head</i>
1	12.0	4.0	2.2	3.8	3.2	0.6	2.0	11.7
2	59.1	16.2	3.3	35.7	33.8	1.9	4.0	192.8
3	827.8	325.2	74.0	398.4	321.2	77.2	30.2	155.5
4	637.4	11.6	3.6	530.6	135.9	394.7	91.5	11.6
5	3,124.3	1,306.1	422.9	1,314.4	781.7	532.7	81.0	275.5
6	5,692.0	2,960.0	1,944.2	659.3	118.5	540.8	128.4	10.0
7	13,589.8	7,454.2	5,423.9	630.8	29.8	601.1	80.9	0.3
8	2,841.3	1,500.3	1,187.6	132.4	41.5	90.8	21.0	
9	1,613.8	838.7	84.3	651.2	559.2	92.0	39.6	88.3
10	1,118.3	487.0	349.4	250.4	115.3	135.1	31.5	4.5
US ²	29,515.8	14,903.3	9,495.5	4,607.0	2,140.1	2,466.9	510.0	750.1
	Hogs				Sheep			
	Total ²	Barrows & Gilts	Sows	Stags & Boars	Total ²	Mature Sheep	Lambs & Yearlings	
	<i>1,000 Head</i>	<i>1,000 Head</i>	<i>1,000 Head</i>	<i>1,000 Head</i>	<i>1,000 Head</i>	<i>1,000 Head</i>	<i>1,000 Head</i>	
1	16.4	16.1	0.2	0.1	19.5	4.0	15.5	
2	129.0	126.4	1.8	0.8	129.2	14.6	114.5	
3	6,132.4	6,115.7	16.3	0.4	98.9	8.7	90.2	
4	14,929.4	14,067.5	847.3	14.6	28.9	12.9	16.0	
5	24,551.7	23,218.6	1,308.0	25.2	362.7	54.9	307.8	
6	4,914.3	4,678.5	234.9	0.9	248.8	13.2	235.6	
7	35,528.5	34,815.6	522.0	191.0	366.5	1.1	365.4	
8	4,390.2	4,327.1	62.7	0.4	893.3	19.9	873.4	
9	2,251.5	2,250.3	0.9	0.3	282.3	5.5	276.8	
10	358.5	357.5	0.8	0.2	17.5	1.7	15.8	
US ²	93,202.0	89,973.4	2,994.8	233.8	2,447.6	136.6	2,311.0	

* Accumulated totals based on unrounded data.

¹ States included in regions are as follows: 1- CT, ME, NH, VT, MA, & RI; 2- NY & NJ; 3- DE-MD, PA, WV, & VA; 4- AL, FL, GA, KY, MS, NC, SC, & TN; 5- IL, IN, MI, MN, OH, & WI; 6- AR, LA, NM, OK, & TX; 7- IA, KS, MO, & NE; 8- CO, MT, ND, SD, UT, & WY; 9- AZ, CA, HI & NV; 10- AK, ID, OR, & WA.

² Totals may not add due to rounding.

**Federally Inspected Slaughter: By State and United States,
November 2004**

State	Cattle						Bulls & Stags	Calves Total
	Total ¹	Steers	Heifers	Cows				
				All	Dairy	Other		
	<i>1,000 Head</i>	<i>1,000 Head</i>	<i>1,000 Head</i>	<i>1,000 Head</i>	<i>1,000 Head</i>	<i>1,000 Head</i>	<i>1,000 Head</i>	<i>1,000 Head</i>
AL								
AK	0.1							
AZ	35.0	25.9	0.5	8.6	8.6			
AR	0.4	0.1		0.2		0.2		
CA	110.9	42.9	5.6	59.2	48.7	10.5	3.2	8.2
CO	174.5	102.7	71.0	0.7	0.5	0.2		
DE-MD	3.4	2.2	0.8	0.3	0.3			0.1
FL	6.9	0.1	0.1	6.3	0.3	6.0	0.4	
GA	20.7	0.1		18.6	3.2	15.4	2.0	
HI	0.9	0.3	0.2	0.3		0.3	0.1	
ID	49.3	15.9	11.6	19.9	5.2	14.7	2.0	
IL								7.7
IN								0.6
IA								
KS	527.6	304.2	222.7	0.8		0.8		
KY	0.5	0.4	0.1	0.1		0.1		
LA								
MI	32.9	20.4	0.4	12.1	5.2	6.9	0.1	1.9
MN	61.0	7.2	4.6	44.9	8.2	36.7	4.4	
MS								
MO								
MT	0.5	0.2	0.1	0.1		0.1	0.1	
NE	541.1	266.8	217.1	51.8	2.3	49.5	5.5	
NV	0.1	0.1						
N ENG ²	1.1	0.5	0.2	0.1	0.1		0.2	0.5
NJ	2.2	1.0	0.1	0.9	0.8	0.1	0.2	6.8
NM	0.5			0.5	0.5			
NY	3.6	0.7	0.4	2.4	2.3	0.1	0.2	9.2
NC	18.5	0.1	0.1	14.3	6.9	7.4	4.0	0.1
ND								
OH	3.3	0.3	0.2	2.8	1.5	1.3	0.1	6.6
OK								
OR	1.2	0.2	0.1	0.7	0.6	0.1	0.1	
PA	64.0	21.8	4.9	35.1	28.5	6.6	2.3	14.3
SC								
SD								
TN	1.0	0.3	0.1	0.6	0.2	0.4	0.1	0.1
TX	467.7	235.3	166.6	57.0	11.1	45.9	8.9	0.8
UT	40.7	18.6	17.8	3.9	1.4	2.5	0.4	
VA	0.2	0.1						
WA	53.5	28.3	19.1	5.9	3.8	2.1	0.3	
WV	0.1	0.1						
WI	110.0	38.6	2.9	65.8	49.4	16.4	2.6	8.0
WY								
US ³	2,491.6	1,206.4	804.3	440.2	191.9	248.3	40.7	66.1

¹ Totals may not add due to rounding.

² N ENG includes CT, ME, MA, NH, RI, and VT.

³ States with no data printed are still included in the US total. Data not printed to avoid disclosing individual operations.

**Federally Inspected Slaughter: By State and United States,
November 2004**

State	Hogs				Sheep		
	Total ¹	Barrows & Gilts	Sows	Stags & Boars	Total ¹	Mature Sheep	Lambs & Yearlings
	<i>1,000 Head</i>	<i>1,000 Head</i>	<i>1,000 Head</i>	<i>1,000 Head</i>	<i>1,000 Head</i>	<i>1,000 Head</i>	<i>1,000 Head</i>
AL	8.4	0.1	7.2	1.2			
AK							
AZ							
AR							
CA	203.4	203.4					
CO	0.5	0.5			91.5		91.5
DE-MD	1.9	1.9			3.2	0.1	3.1
FL	8.2	8.1	0.1	0.1	0.2		0.2
GA	7.0	6.8	0.2				
HI	2.3	2.3					
ID					0.2		0.2
IL	780.0	729.3	49.8	0.9	16.4	1.3	15.0
IN	626.7	626.7			1.8	1.3	0.5
IA	2,578.5	2,519.7	38.3	20.5	29.8	0.2	29.6
KS	10.8	0.7	10.1		0.2		0.1
KY	208.1	200.6	7.5		0.8	0.6	0.2
LA							
MI	9.4	3.4	6.0		15.5	2.2	13.3
MN	768.8	768.8		0.1	0.1		0.1
MS							
MO	170.4	170.3			0.4		0.4
MT	0.2	0.1			0.1		0.1
NE	596.0	596.0					
NV					0.2		0.1
N ENG ²	1.4	1.4			1.8	0.4	1.5
NJ	9.7	9.5	0.1	0.1	10.7	0.9	9.8
NM							
NY	2.6	2.5			2.0	0.4	1.5
NC	977.0	967.1	9.5	0.4	0.4		0.4
ND	13.0	13.0					
OH	90.8	76.7	13.1	1.1			
OK	403.9	398.7	5.2				
OR	17.3	17.3			1.3	0.1	1.2
PA	236.8	236.4	0.3	0.1	5.0	0.2	4.8
SC							
SD	443.3	440.3	2.9		0.9		0.9
TN	57.8	0.7	57.1		0.6	0.2	0.4
TX	29.8	22.6	7.2		16.5	0.8	15.7
UT	1.9	1.6	0.3		2.1	1.7	0.4
VA	348.2	346.9	1.4				
WA	1.6	1.6			0.1		0.1
WV	0.1	0.1					
WI	35.8	0.4	35.4		0.2		0.2
WY							
US ³	8,873.1	8,578.9	269.5	24.6	228.2	11.6	216.6

¹ Totals may not add due to rounding.

² N ENG includes CT, ME, MA, NH, RI, and VT.

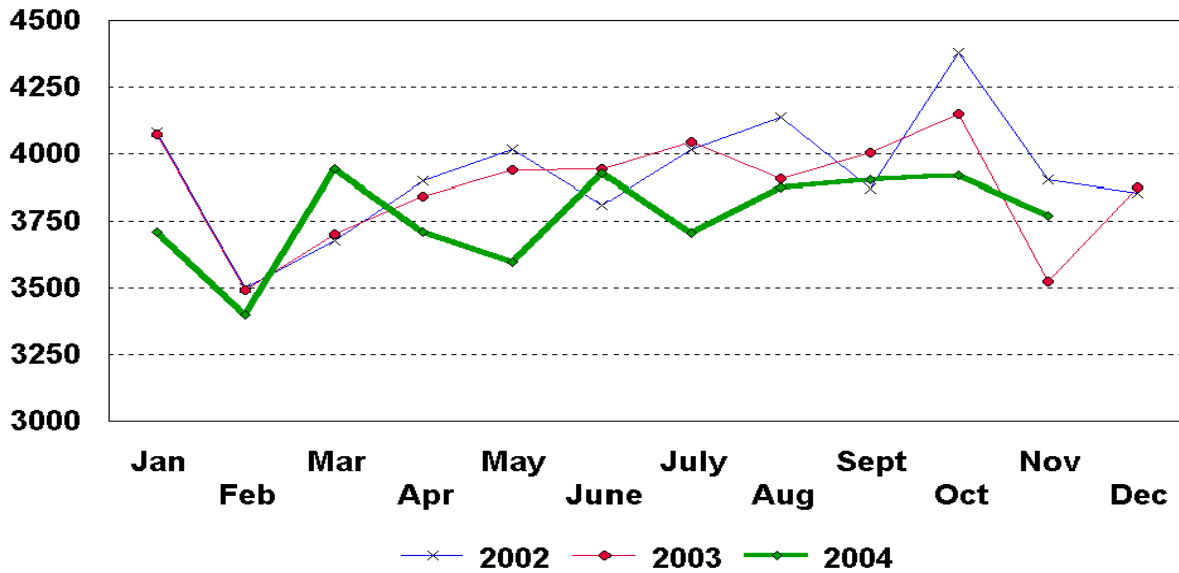
³ States with no data printed are still included in the US total. Data not printed to avoid disclosing individual operations.

Federally Inspected Slaughter: Percent of Total Commercial Slaughter by Species, United States

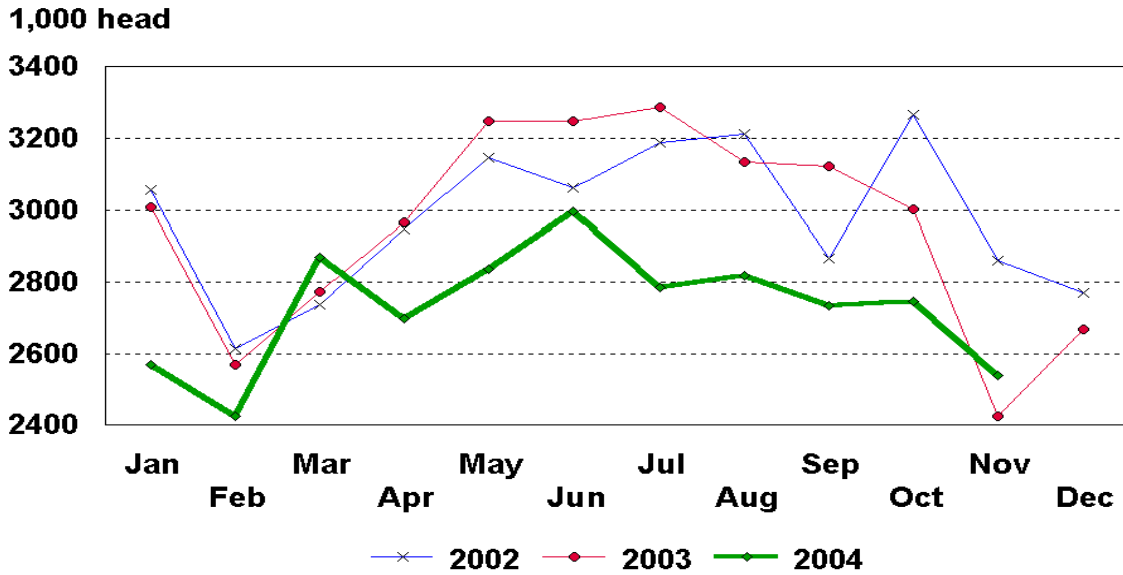
Species	Nov 2003	Oct 2004	Nov 2004	Jan - Nov	
				2003	2004
	<i>Percent</i>	<i>Percent</i>	<i>Percent</i>	<i>Percent</i>	<i>Percent</i>
Cattle	98.1	98.1	98.1	98.4	98.3
Calves	97.5	96.8	97.2	97.5	97.6
Hogs	98.9	99.0	99.0	98.8	98.9
Sheep	94.3	94.6	94.2	94.2	94.3

U.S. Monthly Commercial Red Meat Production

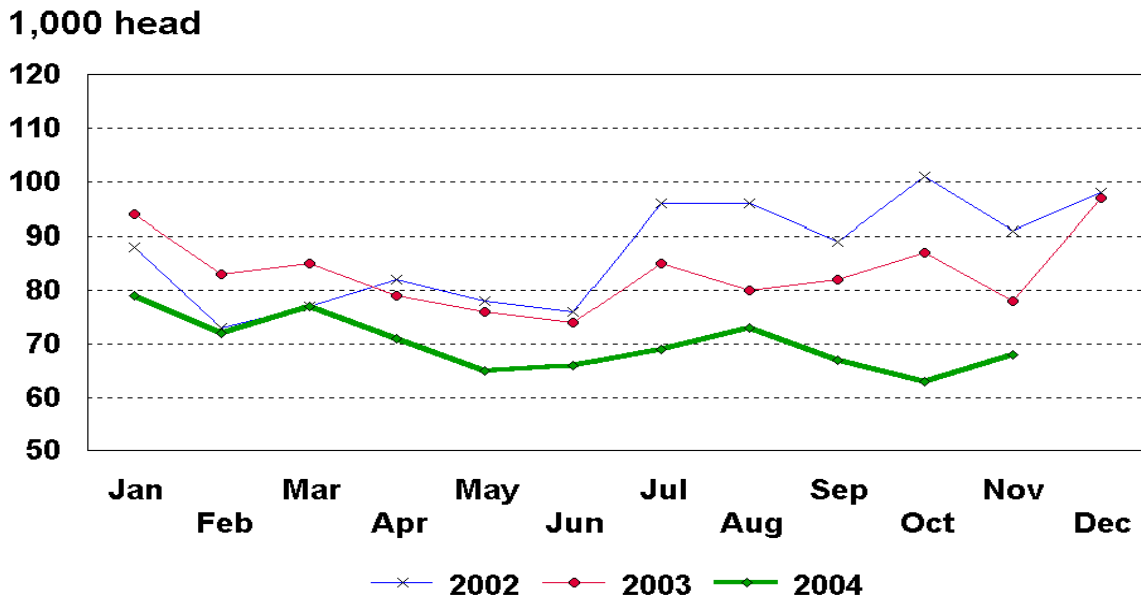
Million Pounds



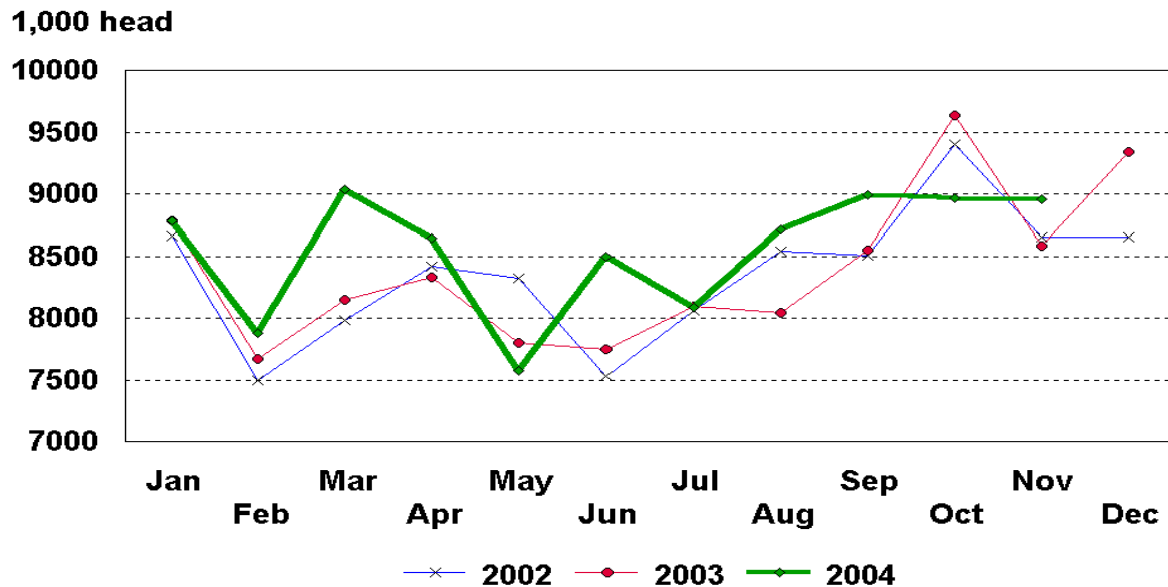
U.S. Monthly Commercial Slaughter Cattle



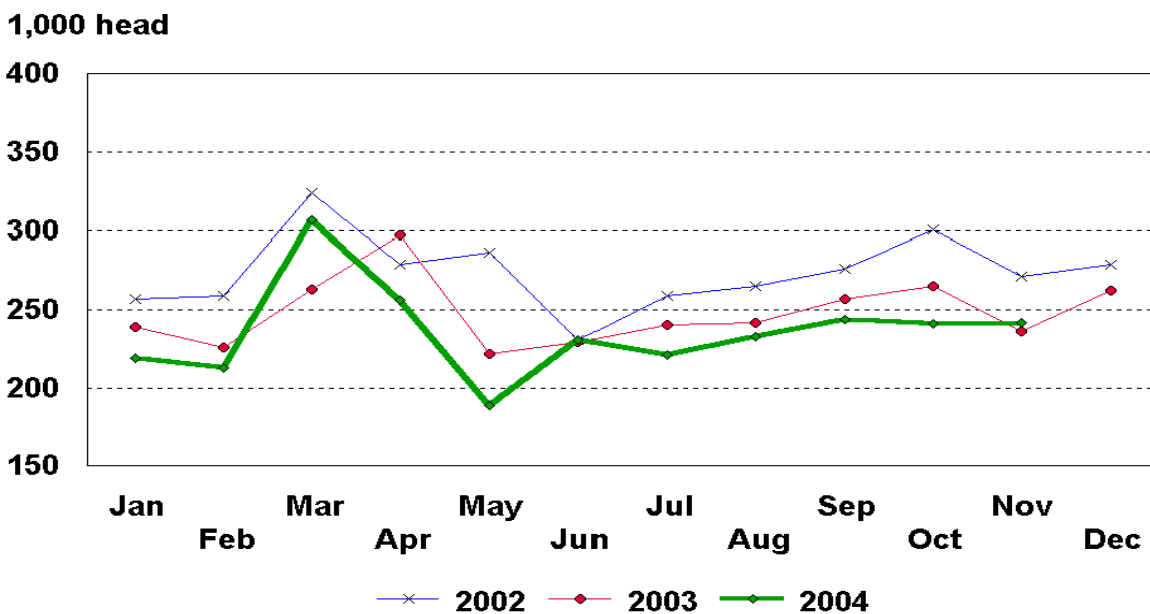
U.S. Monthly Commercial Slaughter Calves



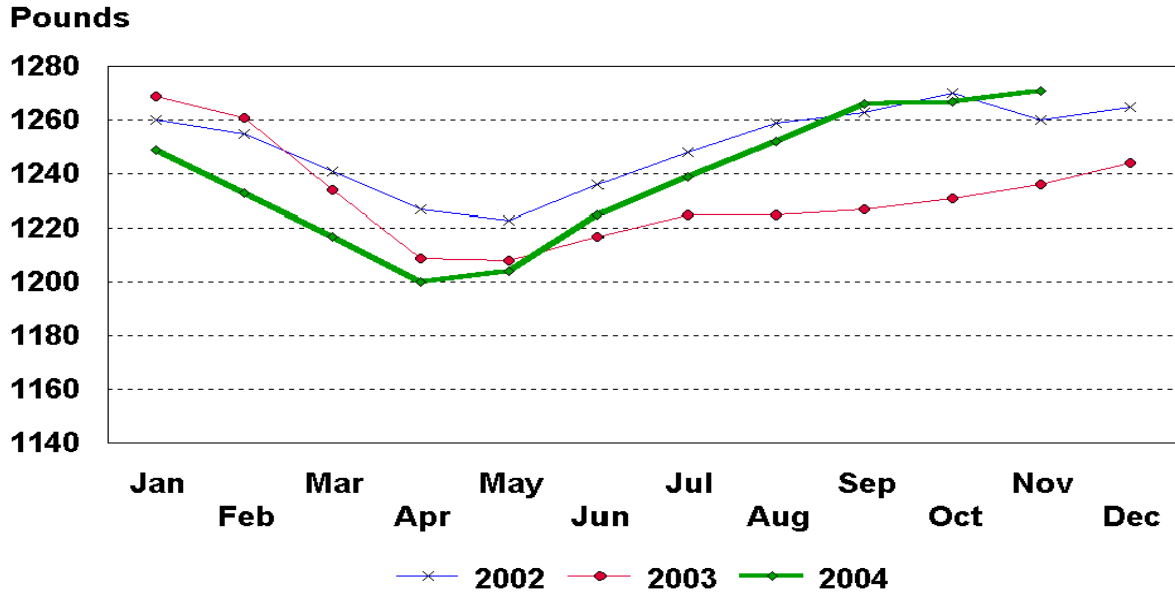
U.S. Monthly Commercial Slaughter Hogs



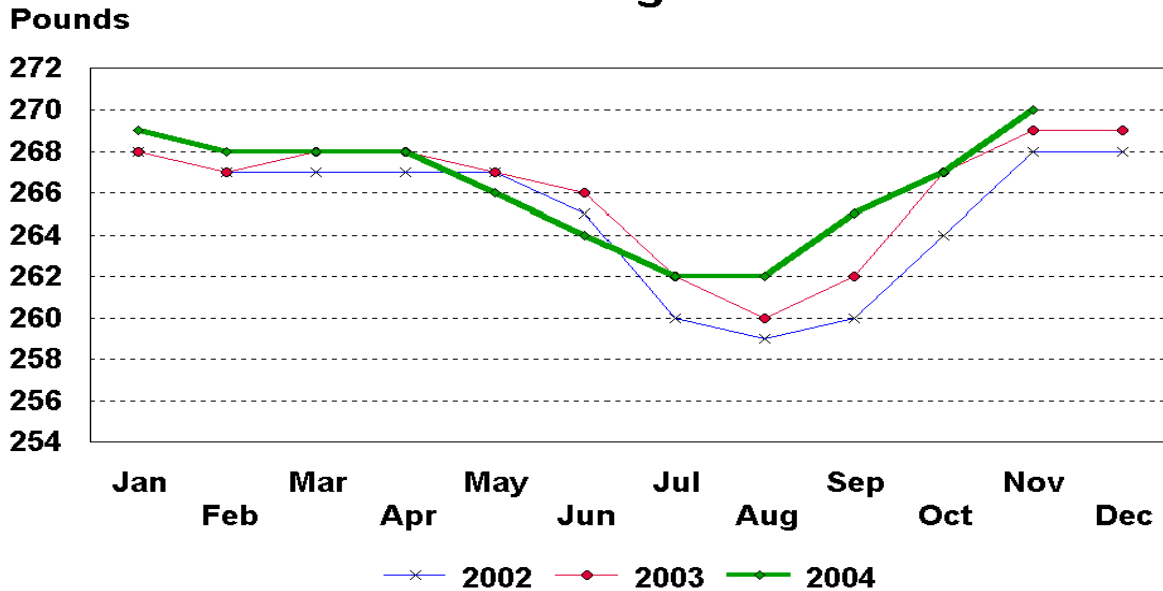
U.S. Monthly Commercial Slaughter Sheep



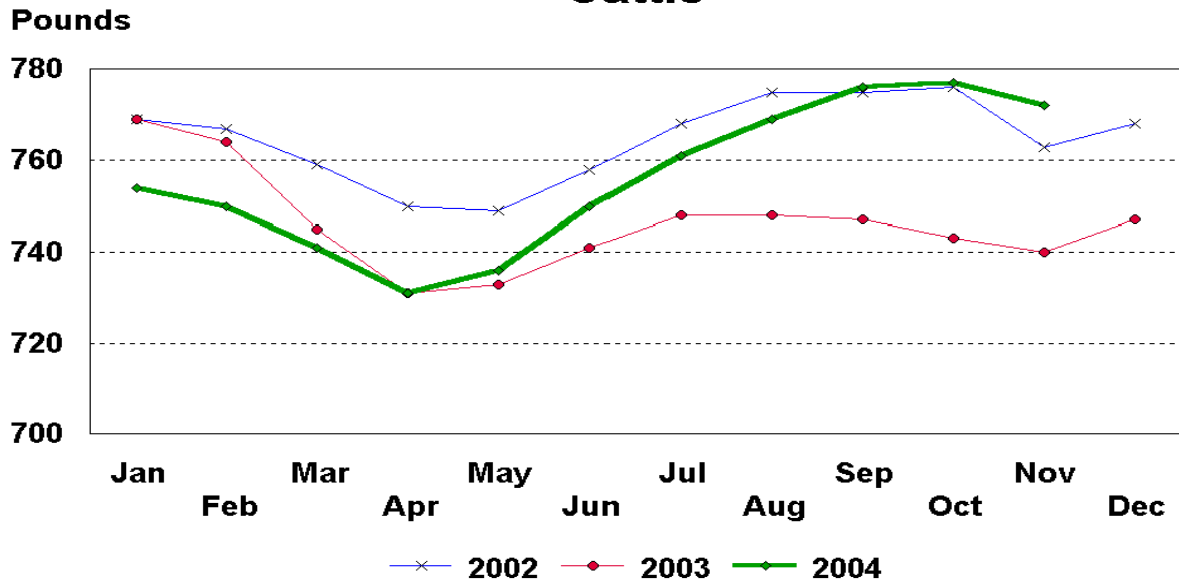
U.S. Monthly Commercial Slaughter Average Live Weight Cattle



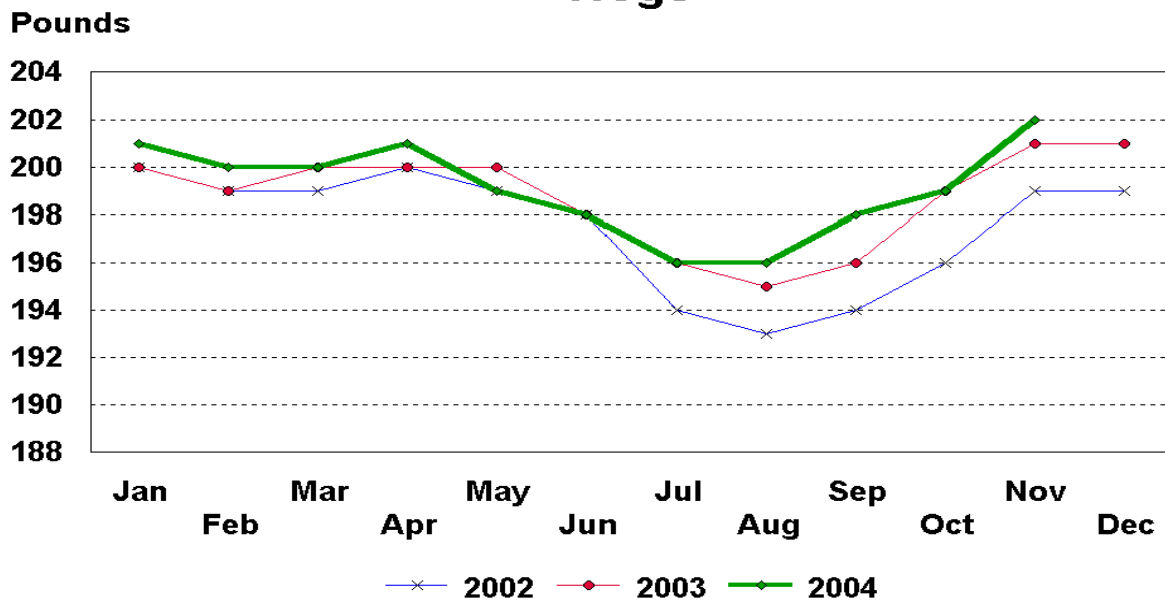
U.S. Monthly Commercial Slaughter Average Live Weight Hogs



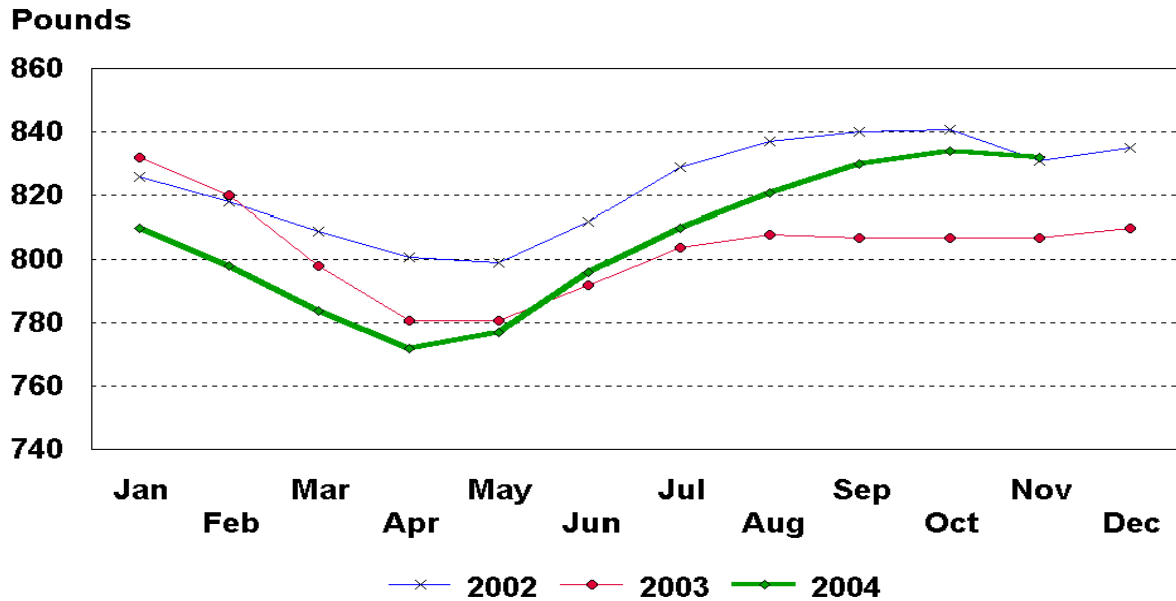
U.S. Monthly Federally Inspected Average Dressed Weight Cattle



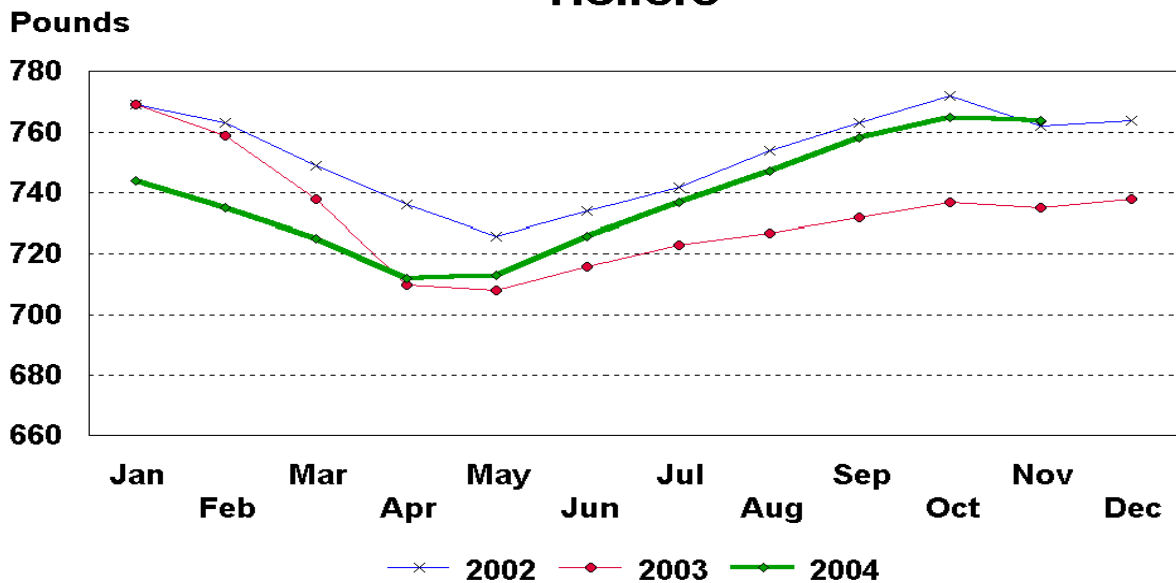
U.S. Monthly Federally Inspected Average Dressed Weight Hogs



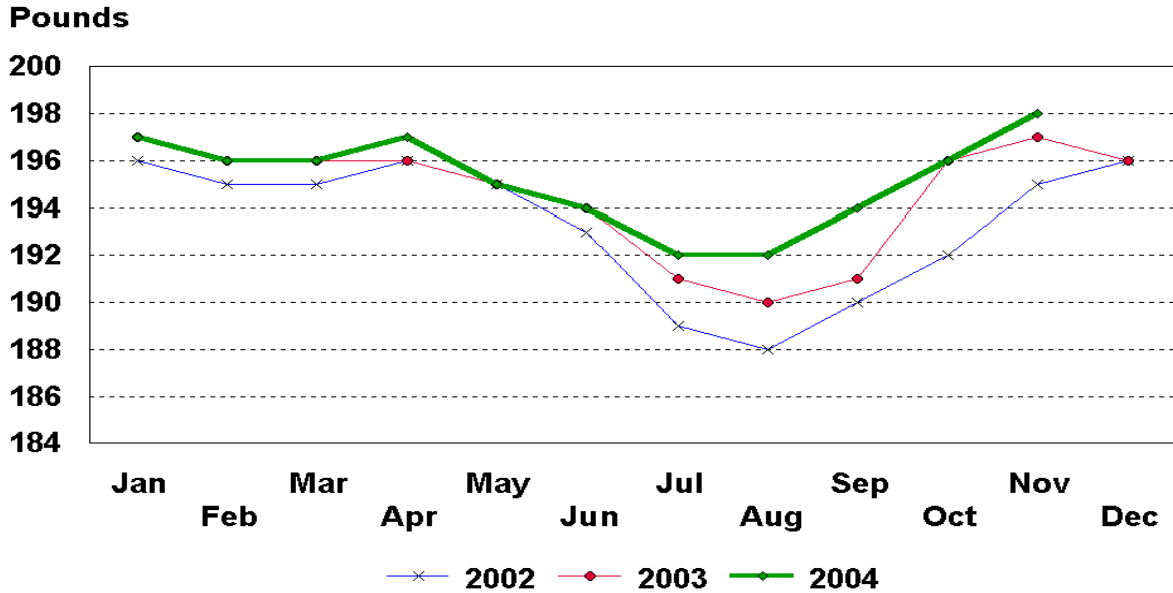
U.S. Monthly Federally Inspected Average Dressed Weight Steers



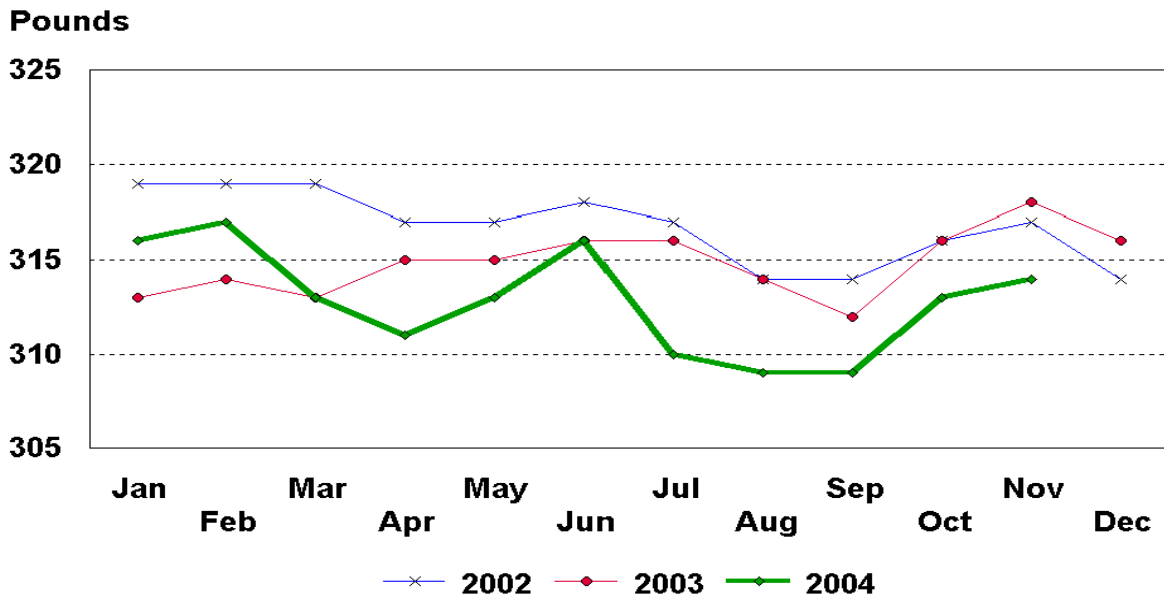
U.S. Monthly Federally Inspected Average Dressed Weight Heifers



U.S. Monthly Federally Inspected Average Dressed Weight Barrows and Gilts



U.S. Monthly Federally Inspected Average Dressed Weight Sows



Livestock Slaughter Estimates

Data Sources: Primary data for the commercial livestock slaughter estimates are obtained from the **Weekly Livestock Slaughter Report** (LS-149) questionnaires completed by inspectors from the Food Safety and Inspection Service (FSIS), USDA, which provide actual counts of animals slaughtered in Federally Inspected (FI) plants. These counts are combined with data from State-administered Non-Federally Inspected (NFI) slaughter plants to derive total commercial slaughter estimates. Over 95 percent of the total U.S. slaughter for any species is under FI. Number of head slaughtered daily under FI are recorded on the LS-149 forms by species and class. Head kill excluding animals condemned and total live and dressed weights are also given.

There are 850 plants in the U.S. operating under Federal Inspection and over 2,200 plants under State inspection. Slaughter from State-inspected Talmedge-Aiken plants is included in FI totals (see Types of Plants, page 22). To prevent duplication in reporting between NFI and FI plants and assure all FI plants are included, certificates prepared by FSIS identifying operating status are constantly monitored.

Revision Policy: Revisions are generally the result of late or corrected data and are less than one-half of 1 percent. Revisions for the previous month and the year-to-date totals are noted in each monthly release by an (*) or a footnote. Final data are published in the annual summary.

Procedures and Reliability: Individual inspectors may be contacted by telephone if the LS-149 is not received by NASS in time for summarization. This assures that all plants slaughtering a large number of head or several species are accounted for each week.

All head kill data are tabulated on a weekly basis approximately two weeks after the kill week. A computer edit compares each plant's data with the historical data for that plant. The edit provides a missing reports listing for follow-up telephone contact and imputes missing weight data. In addition, data are checked for unusual values for species, class, head kill, and pattern of kill, generally based on each plant's past operating profile.

If no form is received by mail or other means, data for plants slaughtering fewer than 50 total head weekly of only one species are imputed. Imputation of live and dressed weights may also be necessary on partially completed forms for any plant. The imputation is also based on the history of each respective plant and represents the recent operating characteristics until final data are tabulated. Imputed head kill for missing plants usually is less than 1 percent of the U.S. head kill totals. Imputation for live and dressed weight data for cattle is usually less than 10 percent and for hogs about 7 percent. The imputation for calves and sheep is more frequent and variable.

Head kill for FI slaughter before condemnation is for the actual days of the survey month, while head kill after condemnation and live and dressed weight data are for full weeks only. Average live and dressed weights and dressing percentages by State are compared with the

previous week as an additional check. Fluctuations are frequently the result of plants permanently or temporarily closing and a shift in the species reported.

FI data are summarized weekly and accumulated to a monthly total for this release, while NFI data are summarized monthly only. These weekly totals are published by USDA's Agricultural Marketing Service (AMS) in **Livestock, Meat, Wool Market News**, Weekly Summary, and Statistics.

Livestock slaughter estimates are based on a census of operating plants and therefore, have no sampling error. However, they may be subject to errors such as omissions, duplications and mistakes in reporting, recording and processing the data. These errors are minimized through rigid quality controls in the edit and summarization process, and a careful review of all reported data for consistency and reasonableness.

No data are published, unless permission is granted, if less than three plants slaughter a species in a State or if one plant has 60 percent or more of the total commercial slaughter for a species. If not published, these data are included in U.S. totals. A review of the data is made annually to determine publishibility.

Types of Plants

There are generally **four types** of slaughtering plants.

- (1) **Federally Inspected (FI) Plants:** Plants that transport meat interstate must employ federal inspectors to assure compliance with USDA standards. Any State whose commercial plants operate entirely under federal inspection may still have custom-exempt establishments for which NFI estimates are made.
- (2) **Talmedge-Aiken (TA) Plants:** Slaughter plants in which USDA is responsible for inspection. However, federal inspection is carried out by State employees. These plants are considered to be federally inspected.
- (3) **Non-Federally Inspected (NFI) Plants:** Plants which sell and transport only intrastate. State inspectors assure compliance with individual State standards for these NFI plants. Mobile slaughtering units are excluded and are considered farm slaughter.
- (4) **Custom-Exempt Plants:** Plants that do not sell meat but operate on a custom basis only are custom-exempt. The animals and meat are not inspected, but the facilities must meet health standards. These are considered NFI plants and head kill is included in NFI totals.

Terms and Definitions

Commercial Production: Includes slaughter and meat production in federally inspected and other plants, but excludes animals slaughtered on farms.

Dressed Weight: The weight of a chilled animal carcass. Beef with kidney knob in; veal with hide off; lamb and mutton with pluck out; pork with leaf fat and kidneys out, jowls on and head off.

Dressing Percent: Usually expressed as a percentage yield of chilled carcass in relation to the weight of the live animal on hoof. For example, a live hog that weighed 200 pounds on hoof and yielded a carcass weighing 140 pounds would have a dressing percentage of 70.

Food and Meat Inspection: Includes examination, checking, or testing of a carcass and/or meat against established government standards and involves checking the facility for cleanliness, health of animals, or parts of animals and quality of the meat produced.

Live Weight: The gross weight of a live animal when received at the slaughter plant.

Plant, Slaughter: An establishment where animals are killed and butchered.

Red Meat: Red meat production is the carcass weight after slaughter including beef, veal, pork, and lamb and mutton. It is derived using the number of head times average dressed weight for FI and NFI separately. FI head kill must be adjusted for condemnations using the factor derived from the FSIS inspection reports.

The FI meat production formula is $(\text{FI head kill}) \times (1 - \text{condemnation factor}) \times (\text{average dressed weight}) = \text{FI red meat production}$. The condemnation factor is the number of animals condemned as a percentage of the total kill. It has been fairly stable for the last five years; running about 1.90 head per 100 head for calves, .5 per 100 for cattle, .40 per 100 for hogs and .20 per 100 for sheep. The NFI meat production formula is $(\text{NFI head kill}) \times (\text{live weight}) \times (\text{FI dressing percentage}) = \text{NFI red meat production}$.

Slaughter: Killing and butchering of animals primarily for food.

Slaughter, Farm: Animals slaughtered on farms primarily for home consumption. Excludes custom slaughter for farmers at commercial establishments, but includes mobile slaughtering on farms. These estimates appear only in the annual slaughter release.

Wholesome Meat Act: Legislation that specifies that all meat produced for sale in the U.S. must be inspected. Meat that is transported interstate must be inspected in compliance with Federal (USDA) Standards.

Index

	Page
Commercial Calf Slaughter, Number, Total, and Average Live weight, by State and U.S.	6
Commercial Cattle Slaughter, Number, Total, and Average Live weight, by State and U.S.	5
Commercial Hog Slaughter, Number, Total and Average Live weight, by State and U.S.	7
Commercial Red Meat Production, by State and U.S.	4
Commercial Sheep and Lamb Slaughter, Number, Total, and Average Live weight, by State and U.S.	8
Data Sources, Revision Policy, and Procedures and Reliability	21
Federally Inspected Classification of Number and Average Dressed Weight, by Species and Class and U.S.	9
Federally Inspected Number by Species and Class, by Regions and U.S.	10
Federally Inspected Number by Species and Class, by State and U.S.	12
Federally Inspected Percent of Total Commercial, by Species, U.S.	14
Livestock Slaughter, Number and Average Weights, by Species and Type of Slaughter, U.S.	3
Red Meat Production, Commercial and FI, by Class, U.S	2
Terms and Definitions	23
Types of Plants	22

ACCESS TO REPORTS!!

For your convenience, there are several ways to obtain NASS reports, data products, and services:

INTERNET ACCESS

All NASS reports are available free of charge on the worldwide Internet. For access, connect to the Internet and go to the NASS Home Page at: www.usda.gov/nass/. Select "Today's Reports" or Publications and then Reports Calendar or Publications and then Search, by Title or Subject.

E-MAIL SUBSCRIPTION

All NASS reports are available by subscription free of charge direct to your e-mail address. Starting with the NASS Home Page at www.usda.gov/nass/, click on **Publications**, then click on the **Subscribe by E-mail** button which takes you to the page describing e-mail delivery of reports. Finally, click on **Go to the Subscription Page** and follow the instructions.

PRINTED REPORTS OR DATA PRODUCTS

CALL OUR TOLL-FREE ORDER DESK: 800-999-6779 (U.S. and Canada)
Other areas, please call 703-605-6220 FAX: 703-605-6900
(Visa, MasterCard, check, or money order acceptable for payment.)

ASSISTANCE

For **assistance** with general agricultural statistics or further information about NASS or its products or services, contact the **Agricultural Statistics Hotline** at **800-727-9540**, 7:30 a.m. to 4:00 p.m. ET, or e-mail: nass@nass.usda.gov.

The United States Department of Agriculture (USDA) prohibits discrimination in all its programs on the basis of race, color, national origin, gender, religion, age, disability, political beliefs, sexual orientation, and marital or family status. (Not all prohibited bases apply to all programs.) Persons with disabilities who require alternative means for communication of program information (braille, large print, audiotape, etc.) should contact the USDA's TARGET Center at 202-720-2600 (voice and TDD).

To file a complaint of discrimination, write USDA, Director, Office of Civil Rights, Room 326-W, Whitten Building, 1400 Independence Avenue, SW, Washington, D.C., 20250-9410, or call 202-720-5964 (voice or TDD). USDA is an equal opportunity provider and employer.