



Livestock Slaughter

Released June 24, 2005, by the National Agricultural Statistics Service (NASS), Agricultural Statistics Board, U.S. Department of Agriculture. For information on *Livestock Slaughter* call Katy Bell at (515) 284-4340, office hours 8:00 a.m. to 4:30 p.m. CT.

Red Meat Production Up From Previous Month and Year

Commercial red meat production for the United States totaled 3.71 billion pounds in May, up 3 percent from the 3.60 billion pounds produced in May 2004.

Beef production, at 2.07 billion pounds, was slightly above the previous year. Cattle slaughter totaled 2.79 million head, down 2 percent from May 2004. The average live weight was up 20 pounds from the previous year, at 1,224 pounds.

Veal production totaled 13.2 million pounds, 4 percent below May a year ago. Calf slaughter totaled 58,500 head, down 10 percent from May 2004. The average live weight was 22 pounds above last year, at 376 pounds.

Pork production totaled 1.61 billion pounds, up 7 percent from the previous year. Hog kill totaled 8.03 million head, 6 percent above May 2004. The average live weight was 4 pounds above the previous year, at 270 pounds.

Lamb and mutton production, at 14.8 million pounds, was up 14 percent from May 2004. Sheep slaughter totaled 208,000 head, 10 percent above last year. The average live weight was 143 pounds, up 5 pounds from May a year ago.

January to May 2005 commercial red meat production was 18.3 billion pounds, down slightly from 2004. Accumulated beef production was down 2 percent from last year, veal was down 10 percent, pork was up 1 percent from last year, and lamb and mutton production was down 4 percent.

May 2004 contained 21 weekdays (including one holiday) and 5 Saturdays.

May 2005 contained 22 weekdays (including one holiday) and 4 Saturdays.

Commercial Red Meat Production: United States ¹

Class	May 2004	Apr 2005	May 2005	May 05 % of		Jan - May ²		
				May 2004	Apr 2005	2004	2005	05 as % of 04
	<i>Million Pounds</i>	<i>Million Pounds</i>	<i>Million Pounds</i>	<i>Percent</i>	<i>Percent</i>	<i>Million Pounds</i>	<i>Million Pounds</i>	<i>Percent</i>
Beef	2,070	*1,889	2,075	100	110	9,864	9,691	98
Veal	13.7	13.0	13.2	96	102	72.2	64.9	90
Pork	1,500	1,704	1,611	107	95	8,356	8,451	101
Lamb & Mutton	13.1	15.5	14.8	114	95	83.0	79.4	96
Total Red Meat	3,597	3,622	3,714	103	103	18,375	18,286	100

* Revised.

¹ Based on packers' dressed weights and excludes farm slaughter.

² Accumulated totals and percentages based on unrounded data.

Federally Inspected Red Meat Production: United States ¹

Class	May 2004	Apr 2005	May 2005	May 05 % of		Jan - May ²		
				May 2004	Apr 2005	2004	2005	05 as % of 04
	<i>Million Pounds</i>	<i>Million Pounds</i>	<i>Million Pounds</i>	<i>Percent</i>	<i>Percent</i>	<i>Million Pounds</i>	<i>Million Pounds</i>	<i>Percent</i>
Beef	2,043	*1,862	2,049	100	110	9,716	9,547	98
Veal	13.4	12.6	12.9	97	102	70.2	63.2	90
Pork	1,486	1,691	1,596	107	94	8,282	8,382	101
Lamb & Mutton	12.3	14.9	14.3	116	96	79.2	76.3	96
Total Red Meat	3,555	*3,580	3,672	103	103	18,147	18,068	100

* Revised.

¹ Based on packers' dressed weights and excludes farm slaughter.

² Accumulated totals and percentages based on unrounded data.

Livestock Slaughter: Number and Average Weights, United States ¹

Species	Unit	May 2004	Apr 2005	May 2005	May 05 % of		Jan - May ²		
					May 2004	Apr 2005	2004	2005	05 % of 04
					<i>Percent</i>	<i>Percent</i>			<i>Prcnt</i>
Cattle No.									
Fed. Insp.	Thou	2,792.1	2,516.5	2,750.8	99	109	13,171.2	12,715.6	97
Other	Thou	44.0	43.6	41.3	94	95	239.7	229.0	96
Comm'l. ³	Thou	2,836.1	2,560.1	2,792.1	98	109	13,410.9	12,944.6	97
Live Wt/Hd									
Fed. Insp.	Lbs	1,206	*1,221	1,225	102	100	1,221	1,242	102
Other	Lbs	1,098	1,117	1,121	102	100	1,100	1,111	101
Comm'l.	Lbs	1,204	*1,219	1,224	102	100	1,220	1,239	102
Calves No.									
Fed. Insp.	Thou	63.2	60.1	57.3	91	95	354.6	310.4	88
Other	Thou	1.5	1.4	1.2	78	83	7.8	7.1	91
Comm'l. ³	Thou	64.7	61.6	58.5	90	95	362.4	317.5	88
Live Wt/Hd									
Fed. Insp.	Lbs	354	351	375	106	107	330	341	104
Other	Lbs	390	400	390	100	97	413	398	96
Comm'l.	Lbs	354	353	376	106	107	332	342	103
Hogs No.									
Fed. Insp.	Thou	7,494.4	8,368.7	7,938.8	106	95	41,510.8	41,595.9	100
Other	Thou	84.2	75.1	91.4	109	122	437.8	407.3	93
Comm'l. ³	Thou	7,578.6	8,443.8	8,030.2	106	95	41,948.6	42,003.2	100
Live Wt/Hd									
Fed. Insp.	Lbs	266	271	270	101	100	268	271	101
Other	Lbs	227	230	235	103	102	233	235	101
Comm'l.	Lbs	266	271	270	101	100	268	270	101
Sheep&Lambs No.									
Fed. Insp.	Thou	175.4	*208.2	198.4	113	95	1,114.7	1,073.9	96
Other	Thou	13.2	12.7	9.6	72	75	69.7	58.9	84
Comm'l. ³	Thou	188.7	*220.9	208.0	110	94	1,184.4	1,132.7	96
Live Wt/Hd									
Fed. Insp.	Lbs	141	145	143	102	98	142	142	100
Other	Lbs	116	103	109	94	106	111	106	95
Comm'l.	Lbs	138	141	143	103	101	140	140	100

* Revised.

¹ Excludes slaughter on farms.

² Accumulated totals and percentages based on unrounded data.

³ Totals may not equal sum of the parts due to rounding.

Commercial Red Meat Production: By State and United States ¹

State	May 2004	Apr 2005	May 2005	May 05 as % of ²	
				May 2004	Apr 2005
	<i>Million Pounds</i>	<i>Million Pounds</i>	<i>Million Pounds</i>	<i>Percent</i>	<i>Percent</i>
AL	2.7	2.6	2.4	88	91
AK		0.1			
AZ	28.9	27.5	28.7	99	104
AR	4.7	3.9	4.2	90	109
CA	109.8	114.9	117.8	107	103
CO	169.2	130.2	157.7	93	121
DE-MD	2.5	3.0	3.1	126	103
FL	4.2	4.9	4.9	117	100
GA	11.2	12.1	13.1	118	109
HI	0.9	0.8	0.8	90	96
ID	36.2	30.1	32.3	89	107
IL	202.2	212.8	209.1	103	98
IN	105.7	117.0	108.0	102	92
IA	478.4	534.0	507.2	106	95
KS	468.0	469.2	489.9	105	104
KY	38.2	35.8	34.6	91	97
LA	1.0	1.0	0.8	83	81
MI	30.8	30.4	31.6	103	104
MN	173.0	181.3	177.9	103	98
MS	22.4	22.7	23.0	103	101
MO	33.4	40.4	37.9	114	94
MT	1.0	1.0	1.0	107	101
NE	563.8	*535.3	600.8	107	112
NV	0.1	0.1	0.1	112	173
N ENG ³	1.2	0.8	0.9	76	108
NJ	4.1	4.1	4.1	100	100
NM	0.6	0.6	0.5	94	88
NY	2.6	3.0	2.9	111	96
NC	162.7	193.7	171.0	105	88
ND	2.7	2.8	2.7	103	98
OH	25.5	23.9	23.0	90	96
OK	81.8	93.3	85.0	104	91
OR	3.3	3.4	3.5	106	104
PA	93.0	89.3	94.9	102	106
SC	19.6	19.1	19.8	101	104
SD	62.4	76.2	76.4	122	100
TN	12.4	12.6	15.9	129	127
TX	399.4	364.9	395.2	99	108
UT	34.3	28.1	34.2	100	122
VA	58.4	60.9	56.0	96	92
WA	42.8	39.6	43.9	103	111
WV	0.3	0.4	0.3	89	74
WI	101.2	93.2	96.4	95	104
WY	0.5	0.5	0.5	101	100
US	3,596.9	*3,621.5	3,714.4	103	103

* Revised.

¹ Includes total beef, veal, pork, lamb, and mutton.

² Percentages based on unrounded data.

³ N ENG includes CT, ME, MA, NH, RI, and VT.

**Commercial Cattle Slaughter: By State and United States,
May 2004 and 2005 ¹**

State	Number Slaughtered		Total Live Weight		Average Live Weight	
	2004	2005	2004	2005	2004	2005
	<i>1,000 Head</i>	<i>1,000 Head</i>	<i>1,000 Pounds</i>	<i>1,000 Pounds</i>	<i>Pounds</i>	<i>Pounds</i>
AL	0.6	0.5	539	414	919	875
AK						
AZ						
AR	1.0	0.8	908	734	905	936
CA	102.6	107.3	133,543	142,234	1,301	1,325
CO	219.3	198.0	261,099	239,742	1,191	1,211
DE-MD	2.8	3.6	3,605	4,666	1,279	1,295
FL						
GA	15.0	20.2	17,987	20,124	1,199	995
HI	0.9	0.8	930	825	1,068	1,098
ID	47.9	40.9	59,371	52,056	1,239	1,271
IL						
IN						
IA						
KS	624.1	643.7	733,824	769,604	1,176	1,196
KY	1.2	1.2	1,042	1,142	862	934
LA	1.2	1.0	966	815	812	852
MI	35.1	35.6	46,884	47,890	1,336	1,345
MN	55.0	48.9	74,233	67,893	1,351	1,388
MS						
MO						
MT	1.2	1.3	1,406	1,484	1,169	1,175
NE	618.4	634.2	755,368	790,027	1,221	1,246
NV						
N ENG ²	1.3	1.0	1,377	1,045	1,058	1,033
NJ	1.9	2.1	2,254	2,734	1,201	1,293
NM	1.0	0.9	952	951	969	1,004
NY	3.1	2.9	3,618	3,505	1,150	1,193
NC	16.6	15.9	17,637	16,258	1,064	1,024
ND						
OH	9.2	7.4	10,472	8,518	1,142	1,150
OK	2.8	2.6	3,051	2,757	1,079	1,078
OR	1.3	1.5	1,556	1,808	1,163	1,230
PA	72.8	70.7	85,085	86,584	1,168	1,224
SC						
SD						
TN	1.0	1.2	973	1,148	940	975
TX	548.6	533.5	637,952	630,603	1,163	1,182
UT	47.5	46.7	53,865	53,645	1,134	1,150
VA	0.9	1.0	930	1,117	1,038	1,090
WA	57.9	58.4	68,884	70,761	1,190	1,211
WV	0.4	0.4	407	383	1,027	978
WI	118.2	109.4	157,962	148,266	1,337	1,356
WY	0.6	0.6	701	722	1,158	1,185
US ³	2,836.1	2,792.1	3,415,402	3,416,695	1,204	1,224

¹ Includes slaughter under Federal inspection and other Commercial slaughter, excludes farm slaughter.

² N ENG includes CT, ME, MA, NH, RI, and VT.

³ States with no data printed are still included in the US total, data not printed to avoid disclosing individual operations. Accumulated totals and percentages based on unrounded data.

**Commercial Calf Slaughter: By State and United States,
May 2004 and 2005 ¹**

State	Number Slaughtered		Total Live Weight		Average Live Weight	
	2004	2005	2004	2005	2004	2005
	<i>1,000 Head</i>	<i>1,000 Head</i>	<i>1,000 Pounds</i>	<i>1,000 Pounds</i>	<i>Pounds</i>	<i>Pounds</i>
AL						
AK						
AZ						
AR						
CA	6.7	6.8	1,004	1,167	149	171
CO						
DE-MD	0.1	0.1	19	30	297	293
FL						
GA	0.2	0.1	99	59	472	537
HI						
ID						
IL	6.7	6.7	3,140	3,059	472	459
IN	0.3	0.1	35	16	132	126
IA						
KS						
KY						
LA	0.5	0.4	224	201	472	499
MI	2.1	2.2	865	945	417	431
MN						
MS						
MO						
MT						
NE						
NV						
N ENG ²	1.1	0.4	263	60	242	147
NJ	7.4	6.5	3,144	2,799	427	428
NM						
NY	6.5	6.0	545	1,022	84	171
NC						
ND						
OH	7.5	4.4	2,865	1,757	381	398
OK	0.1	0.1	28	28	353	424
OR						
PA	13.1	12.5	5,124	5,222	390	416
SC						
SD						
TN	0.1	0.1	45	66	478	602
TX	0.8	0.6	470	401	572	625
UT						
VA						
WA						
WV						
WI	10.4	10.5	4,724	4,883	456	464
WY						
US ³	64.7	58.5	22,911	21,980	354	376

¹ Includes slaughter under Federal inspection and other Commercial slaughter, excludes farm slaughter.

² N ENG includes CT, ME, MA, NH, RI, and VT.

³ States with no data printed are still included in the US total, data not printed to avoid disclosing individual operations. Accumulated totals and percentages based on unrounded data.

**Commercial Hog Slaughter: By State and United States,
May 2004 and 2005 ¹**

State	Number Slaughtered		Total Live Weight		Average Live Weight	
	2004	2005	2004	2005	2004	2005
	<i>1,000 Head</i>	<i>1,000 Head</i>	<i>1,000 Pounds</i>	<i>1,000 Pounds</i>	<i>Pounds</i>	<i>Pounds</i>
AL	8.5	8.1	4,017	3,788	470	466
AK	0.1	0.1	19	25	179	182
AZ	0.6	0.5	112	99	178	194
AR	12.0	12.2	6,804	6,114	565	502
CA	183.9	206.6	45,181	49,674	246	240
CO	0.8	0.9	201	243	238	268
DE-MD	1.2	1.3	276	275	233	216
FL	6.8	7.6	1,188	1,466	174	193
GA	12.1	11.4	2,900	2,633	240	232
HI	2.3	2.0	474	437	203	224
ID	13.0	13.4	4,254	4,364	326	327
IL	676.9	731.6	188,121	204,278	278	279
IN	525.5	530.6	137,326	140,842	261	265
IA	2,129.4	2,293.6	569,747	624,792	268	272
KS						
KY	191.3	169.4	50,188	45,275	262	267
LA	1.7	1.4	354	264	206	186
MI	9.2	9.3	3,539	3,353	385	361
MN	683.4	722.7	179,538	190,775	263	264
MS						
MO						
MT	0.8	0.8	194	204	243	244
NE	504.8	557.7	133,193	149,857	264	269
NV						
N ENG ²	1.3	1.4	283	283	213	200
NJ	8.4	8.8	853	892	101	101
NM	0.1	0.1	30	21	272	271
NY	2.3	2.5	520	560	229	227
NC	818.9	841.2	204,941	216,279	250	257
ND	12.9	13.3	3,073	3,085	239	232
OH	94.6	88.4	25,306	24,134	268	273
OK	382.6	392.4	105,943	110,996	277	283
OR	16.5	16.1	3,906	3,997	237	248
PA	215.9	224.4	52,413	55,049	243	245
SC						
SD	291.3	361.0	75,420	95,036	259	263
TN	36.1	47.1	17,554	22,838	486	485
TX	26.6	42.2	6,351	10,580	239	251
UT	3.3	3.8	741	898	222	239
VA	303.3	285.1	76,552	73,253	252	257
WA	1.8	1.9	460	475	256	257
WV	0.4	0.4	93	100	245	271
WI	49.1	43.7	22,733	20,247	463	463
WY	0.2	0.2	53	50	253	253
US ³	7,578.6	8,030.2	2,016,047	2,167,449	266	270

¹ Includes slaughter under Federal inspection and other Commercial slaughter, excludes farm slaughter.

² N ENG includes CT, ME, MA, NH, RI, and VT.

³ States with no data printed are still included in the US total, data not printed to avoid disclosing individual operations. Accumulated totals and percentages based on unrounded data.

**Commercial Sheep and Lamb Slaughter: By State and United States,
May 2004 and 2005 ¹**

State	Number Slaughtered		Total Live Weight		Average Live Weight	
	2004	2005	2004	2005	2004	2005
	<i>1,000 Head</i>	<i>1,000 Head</i>	<i>1,000 Pounds</i>	<i>1,000 Pounds</i>	<i>Pounds</i>	<i>Pounds</i>
AL						
AK						
AZ	0.1	0.1	10	9	115	115
AR						
CA						
CO	58.5	80.3	9,346	12,998	160	162
DE-MD	2.3	3.0	242	300	107	101
FL	0.2	0.2	13	11	64	59
GA						
HI						
ID	0.3	0.2	32	30	119	124
IL	14.2	15.5	1,970	2,148	139	139
IN	2.7	2.2	291	229	108	106
IA	18.7	25.9	2,941	4,109	157	159
KS	0.2	0.2	22	19	109	110
KY	1.0	1.4	122	187	126	138
LA	0.1	0.1	9	11	94	97
MI	13.3	14.4	1,600	1,907	120	132
MN	0.1	0.2	19	24	133	131
MS						
MO	0.5	0.4	45	35	97	85
MT	0.1	0.1	14	16	121	126
NE	0.1	0.1	14	12	127	111
NV	0.2	0.2	15	17	96	91
N ENG ²	1.6	1.5	159	139	102	95
NJ	9.9	9.9	840	782	85	79
NM	1.8	1.4	217	177	124	124
NY	2.3	2.1	185	150	80	73
NC	0.3	0.4	27	33	83	81
ND						
OH	1.0	0.7	114	77	112	116
OK	0.1	0.1	10	6	131	114
OR	1.3	1.4	137	210	104	150
PA	5.1	4.9	525	467	102	95
SC						
SD	0.5	1.1	70	135	129	121
TN	0.5	0.7	52	58	97	80
TX	18.8	0.3	2,617	31	139	110
UT	2.4	2.4	319	308	134	131
VA	0.9	1.1	92	123	97	111
WA	0.6	0.2	82	36	133	155
WV						
WI	0.6	0.5	86	70	136	133
WY	0.1	0.1	13	11	139	145
US ³	188.7	208.0	26,098	29,639	138	143

¹ Includes slaughter under Federal inspection and other Commercial slaughter, excludes farm slaughter.

² N ENG includes CT, ME, MA, NH, RI, and VT.

³ States with no data printed are still included in the US total, data not printed to avoid disclosing individual operations. Accumulated totals and percentages based on unrounded data.

**Classification of Livestock Slaughtered Under Federal Inspection:
United States**

Item	May 2004	Apr 2005	May 2005	Jan - May ¹		May 2004	Apr 2005	May 2005	Jan - May ¹	
	1,000 Head	1,000 Head	1,000 Head	1,000 Head	1,000 Head	Percent of Total	Percent of Total	Percent of Total	Percent of Total	Percent of Total
Class ²										
Cattle										
Steers	1,473	1,336	1,493	6,567	6,551	52.8	53.1	54.3	49.9	51.5
Heifers	879	772	841	4,303	4,003	31.5	30.7	30.6	32.7	31.5
All Cows	393	366	373	2,087	1,952	14.1	14.6	13.5	15.9	15.4
Dairy Cows	166	173	164	986	937	6.0	6.9	5.9	7.5	7.4
Other Cows	227	193	209	1,101	1,015	8.1	7.7	7.6	8.4	8.0
Bulls & Stags	47	43	43	214	210	1.7	1.7	1.6	1.6	1.7
Total ¹	2,792	2,517	2,751	13,171	12,716	100.0	100.0	100.0	100.0	100.0
Hogs										
Barrows & Gilts	7,220	8,095	7,661	40,048	40,204	96.3	96.7	96.5	96.5	96.7
Sows	255	248	254	1,356	1,275	3.4	3.0	3.2	3.3	3.1
Stags & Boars	19	26	24	108	116	0.3	0.3	0.3	0.3	0.3
Total ¹	7,494	8,369	7,939	41,511	41,596	100.0	100.0	100.0	100.0	100.0
Sheep										
Mature Sheep	14	11	13	59	54	8.0	5.4	6.4	5.3	5.0
Lambs & Yrlngs	161	197	186	1,056	1,020	92.0	94.6	93.6	94.7	95.0
Total ¹	175	208	198	1,115	1,074	100.0	100.0	100.0	100.0	100.0
Average Dressed Weight ³										
	<i>Pounds</i>	<i>Pounds</i>	<i>Pounds</i>	<i>Pounds</i>	<i>Pounds</i>					
Cattle	736	744	749	741	755					
Steers ⁴	777	784	791	787	799					
Heifers ⁴	713	723	721	725	737					
All Cows ⁴	609	623	622	615	628					
Bulls & Stags ⁴	901	911	917	898	914					
Calves & Vealers	216	214	230	202	208					
Hogs	199	203	202	200	202					
Barrow Gilts ⁵	195	200	198	196	199					
Sows ⁵	313	310	311	314	310					
Stags & Boars ⁵	220	210	214	217	211					
Sheep	70	73	72	71	71					
Mature Sheep ⁶	66	70	71	67	69					
Lamb & Yrlngs ⁶	71	73	72	71	71					

¹ Total and percentages based on unrounded data.

² Species totals and classification reported by meat inspectors, Inspection Operations, FSIS.

³ Based on packer reports.

⁴ Included in cattle average dressed weight.

⁵ Included in hog average dressed weight.

⁶ Included in sheep average dressed weight.

**Federally Inspected Slaughter: By Region and United States,
May 2005¹**

Standard Federal Regions	Cattle							Calves
	Total ²	Steers	Heifers	Cows			Bulls & Stags	Total
				All	Dairy	Other		
	<i>1,000 Head</i>	<i>1,000 Head</i>	<i>1,000 Head</i>	<i>1,000 Head</i>	<i>1,000 Head</i>	<i>1,000 Head</i>	<i>1,000 Head</i>	<i>1,000 Head</i>
1	0.8	0.3	0.2	0.2	0.1	0.1	0.2	0.4
2	4.9	1.5	0.3	2.8	2.5	0.3	0.3	12.5
3	73.7	32.6						12.7
4	54.7	1.1	0.3	45.8	9.0	36.8	7.5	
5	258.5	117.1	34.0	100.2	52.8	47.5	7.2	23.7
6	533.9	286.6	176.1	61.5	10.0	51.5	9.6	0.6
7	1,328.2	783.1	491.7	46.0	3.1	42.9	7.4	
8	252.2	141.3						
9	144.2	80.3	5.4	54.7	47.5	7.2	3.8	6.5
10	99.6	49.4	28.6	19.3	9.5	9.8	2.3	
US ²	2,750.8	1,493.2	841.1	373.1	163.6	209.5	43.4	57.3
	Hogs				Sheep			
	Total ²	Barrows & Gilts	Sows	Stags & Boars	Total ²	Mature Sheep	Lambs & Yearlings	
	<i>1,000 Head</i>	<i>1,000 Head</i>	<i>1,000 Head</i>	<i>1,000 Head</i>	<i>1,000 Head</i>	<i>1,000 Head</i>	<i>1,000 Head</i>	
1	1.2	1.1						
2	11.1	10.8	0.2	0.1	11.1	1.5	9.7	
3	509.8	508.4	1.3	0.1	8.9	0.4	8.5	
4	1,251.5	1,181.0	69.1	1.4	3.0	1.4	1.7	
5	2,095.9	1,983.0	110.2	2.8	30.1	6.2	23.9	
6	430.3	411.1	19.2		0.1		0.1	
7	3,031.2	2,962.0			26.3	0.4	25.9	
8	375.9	371.6	4.3		83.3	1.7	81.6	
9	201.5	201.4						
10	30.4	30.3	0.1		1.5	0.1	1.4	
US ²	7,938.8	7,660.7	254.3	23.7	198.4	12.7	185.8	

¹ States included in regions are as follows: 1- CT, ME, NH, VT, MA, & RI; 2- NY & NJ; 3- DE-MD, PA, WV, & VA; 4- AL, FL, GA, KY, MS, NC, SC, & TN; 5- IL, IN, MI, MN, OH, & WI; 6- AR, LA, NM, OK, & TX; 7- IA, KS, MO, & NE; 8- CO, MT, ND, SD, UT, & WY; 9- AZ, CA, HI & NV; 10- AK, ID, OR, & WA.

² Totals may not add due to rounding.

**Federally Inspected Slaughter: By Region and United States,
January - May 2005 * ¹**

Standard Federal Regions	Cattle							Calves
	Total ²	Steers	Heifers	Cows			Bulls & Stags	Total
				All	Dairy	Other		
	<i>1,000 Head</i>	<i>1,000 Head</i>	<i>1,000 Head</i>	<i>1,000 Head</i>	<i>1,000 Head</i>	<i>1,000 Head</i>	<i>1,000 Head</i>	<i>1,000 Head</i>
1	4.2	1.4	0.9	1.1	0.8	0.3	0.8	2.3
2	25.5	7.7	1.5	14.7	13.9	0.8	1.6	73.6
3	344.2	139.8						69.0
4	275.9	5.7	1.7	230.9	52.4	178.5	37.6	
5	1,331.3	553.0	163.9	578.4	307.7	270.8	35.9	116.8
6	2,453.6	1,330.8	814.3	258.0	62.1	195.9	50.5	4.0
7	5,993.5	3,369.3	2,342.3	245.5	17.7	227.9	36.4	0.1
8	1,102.3	551.7						
9	729.6	384.3	32.1	299.1	274.6	24.5	14.1	40.0
10	455.4	207.2	135.6	99.8	55.9	43.9	12.8	
US ²	12,715.6	6,550.9	4,002.6	1,951.9	936.7	1,015.2	210.2	310.4
	Hogs				Sheep			
	Total ²	Barrows & Gilts	Sows	Stags & Boars	Total ²	Mature Sheep	Lambs & Yearlings	
	<i>1,000 Head</i>	<i>1,000 Head</i>	<i>1,000 Head</i>	<i>1,000 Head</i>	<i>1,000 Head</i>	<i>1,000 Head</i>	<i>1,000 Head</i>	
1	5.0	4.8	0.1	0.1				
2	56.7	55.6	0.8	0.3	62.1	6.8	55.3	
3	2,638.1	2,630.8	7.1	0.2	44.3	2.7	41.6	
4	6,726.8	6,361.2	357.6	8.0	13.8	5.5	8.3	
5	10,891.6	10,346.8	532.9	11.8	157.8	24.5	133.3	
6	2,217.5	2,118.5	98.7	0.3	18.1	0.7	17.4	
7	15,979.8	15,632.6			171.4	1.1	170.3	
8	1,923.6	1,898.2	25.3		448.9	9.0	439.9	
9	1,013.9	1,013.5						
10	142.9	142.4	0.4	0.1	7.3	0.4	6.9	
US ²	41,595.9	40,204.5	1,275.1	116.2	1,073.9	54.1	1,019.8	

* Accumulated totals based on unrounded data.

¹ States included in regions are as follows: 1- CT, ME, NH, VT, MA, & RI; 2- NY & NJ; 3- DE-MD, PA, WV, & VA; 4- AL, FL, GA, KY, MS, NC, SC, & TN; 5- IL, IN, MI, MN, OH, & WI; 6- AR, LA, NM, OK, & TX; 7- IA, KS, MO, & NE; 8- CO, MT, ND, SD, UT, & WY; 9- AZ, CA, HI & NV; 10- AK, ID, OR, & WA.

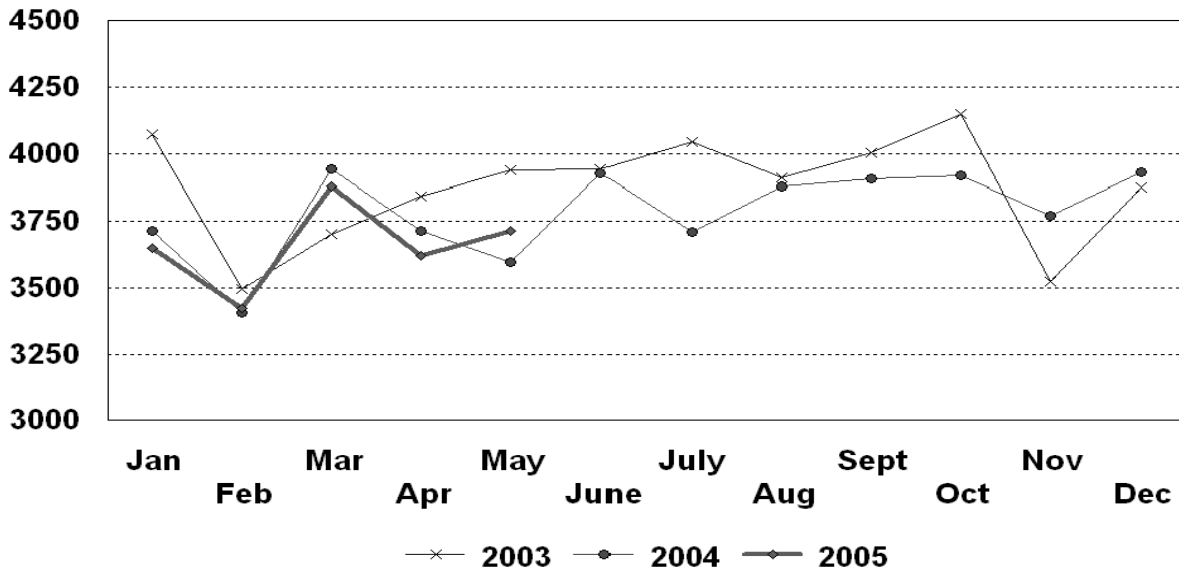
² Totals may not add due to rounding.

Federally Inspected Slaughter: Percent of Total Commercial Slaughter by Species, United States

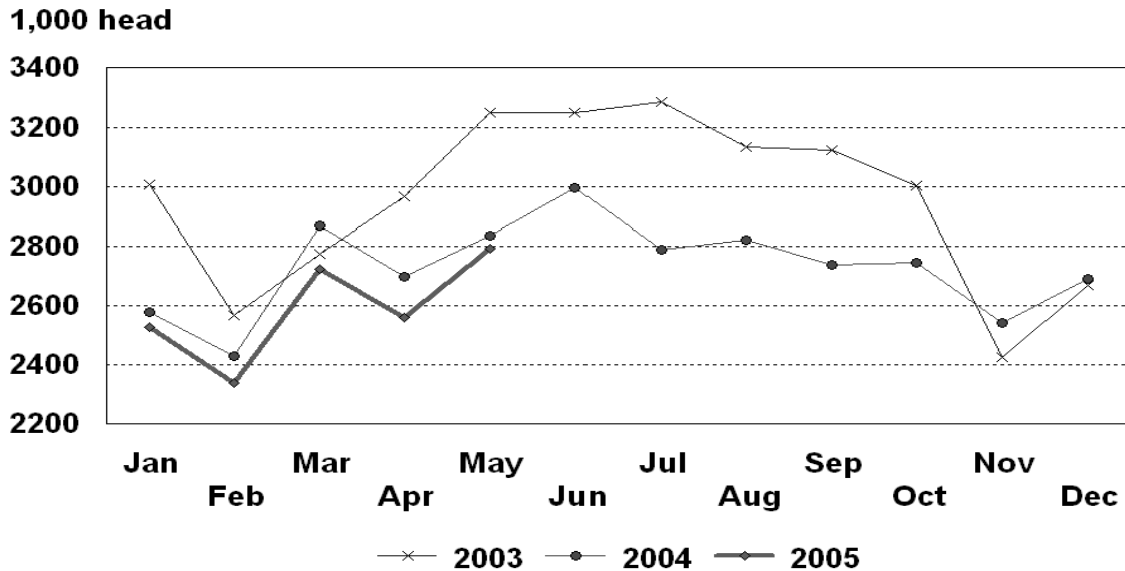
Species	May 2004	Apr 2005	May 2005	Jan - May	
				2004	2005
	<i>Percent</i>	<i>Percent</i>	<i>Percent</i>	<i>Percent</i>	<i>Percent</i>
Cattle	98.4	98.3	98.5	98.2	98.2
Calves	97.6	97.7	98.0	97.8	97.8
Hogs	98.9	99.1	98.9	99.0	99.0
Sheep	93.0	94.2	95.4	94.1	94.8

U.S. Monthly Commercial Red Meat Production

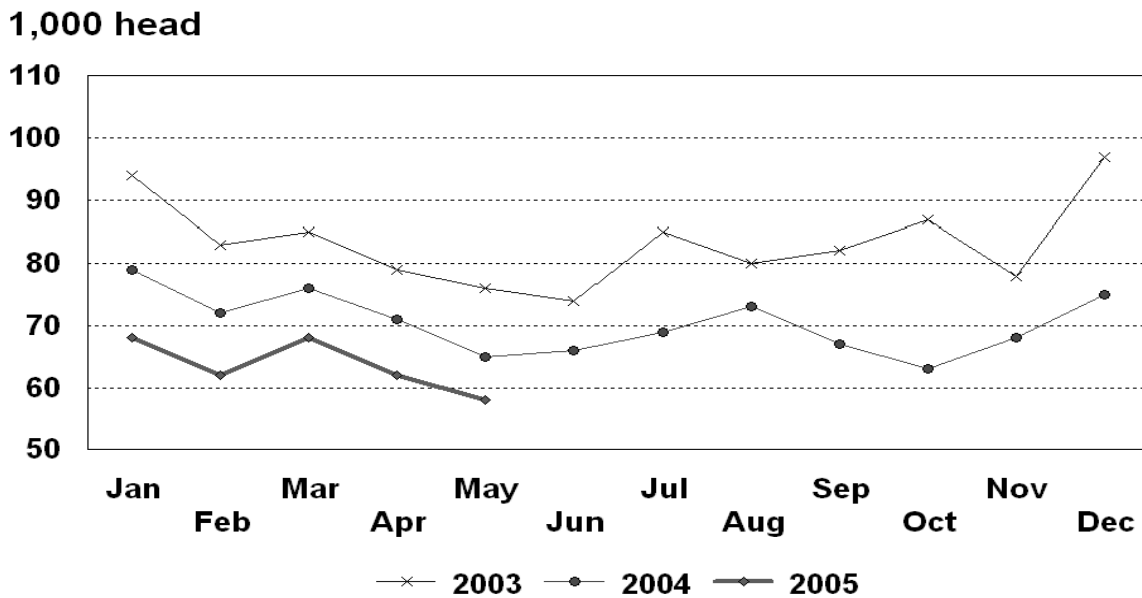
Million Pounds



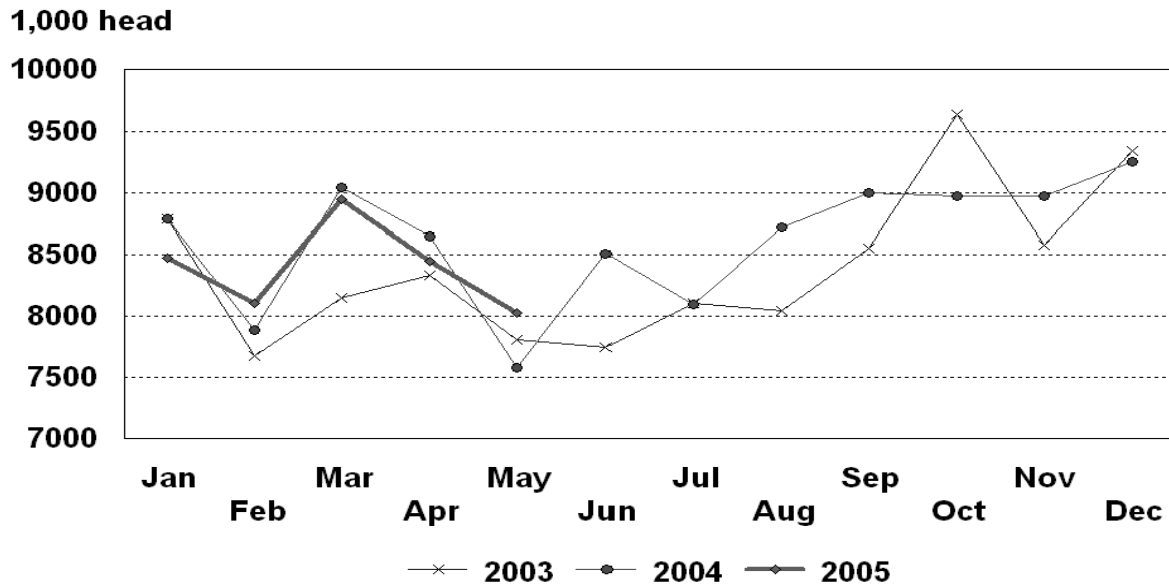
U.S. Monthly Commercial Slaughter Cattle



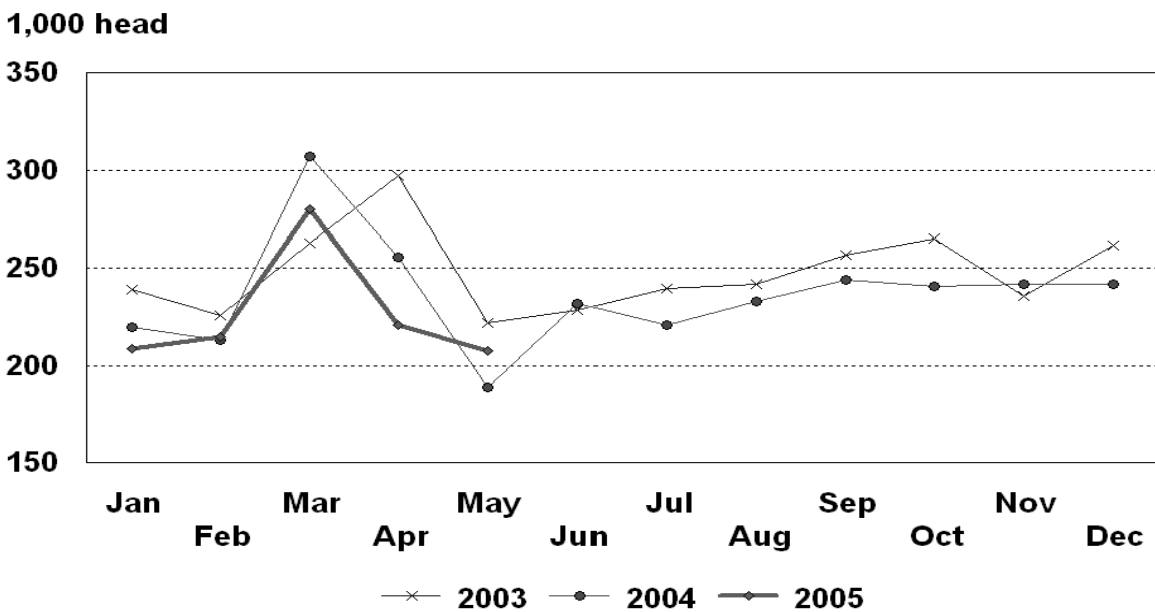
U.S. Monthly Commercial Slaughter Calves



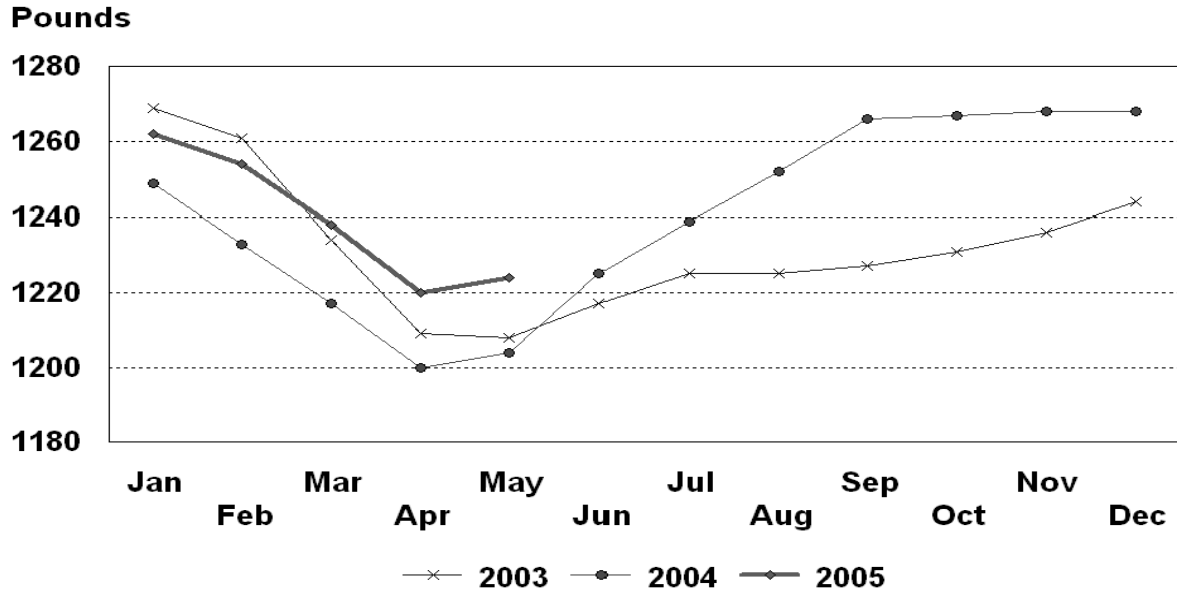
U.S. Monthly Commercial Slaughter Hogs



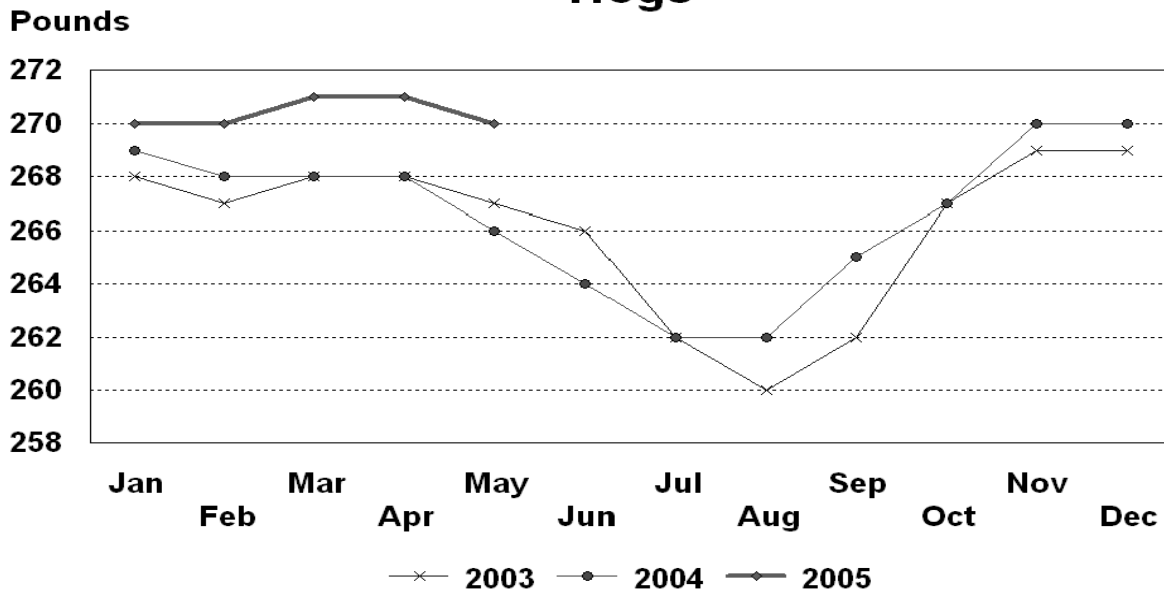
U.S. Monthly Commercial Slaughter Sheep



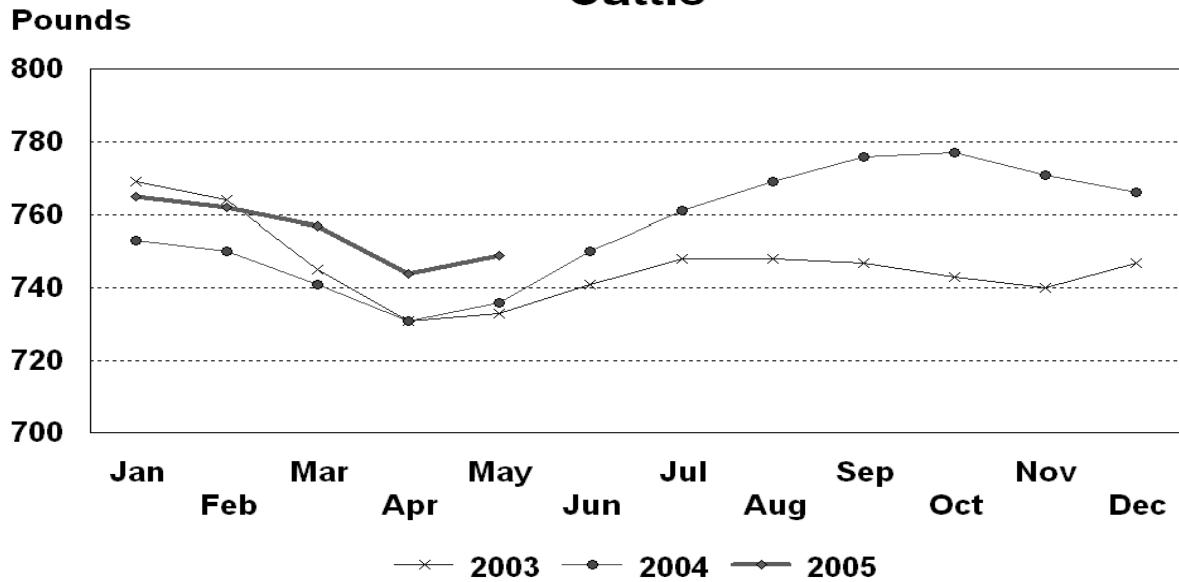
U.S. Monthly Commercial Slaughter Average Live Weight Cattle



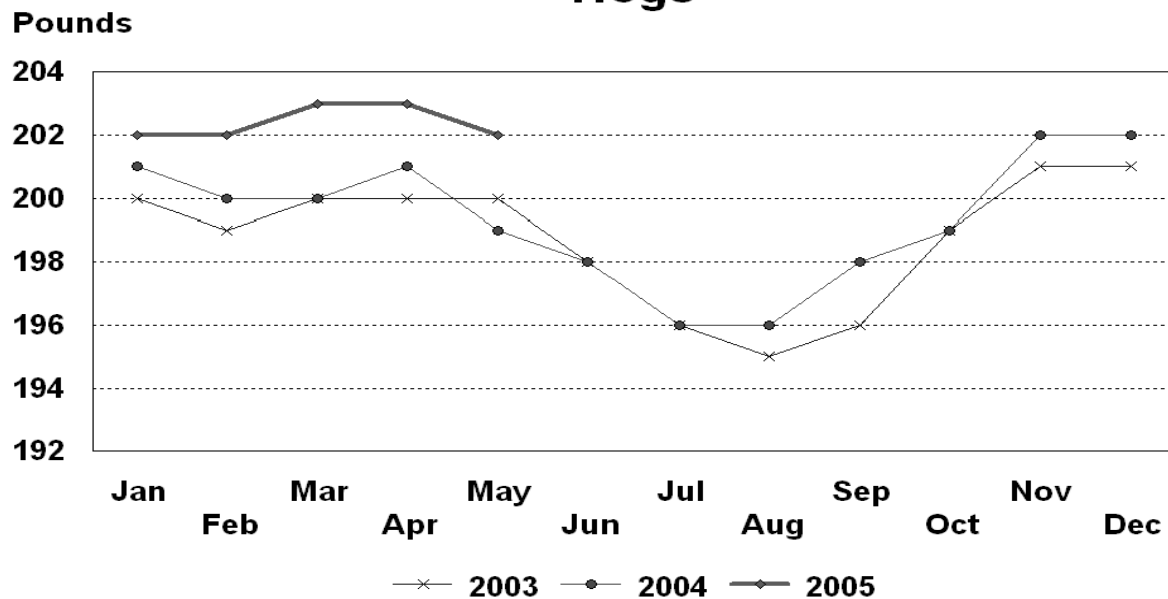
U.S. Monthly Commercial Slaughter Average Live Weight Hogs



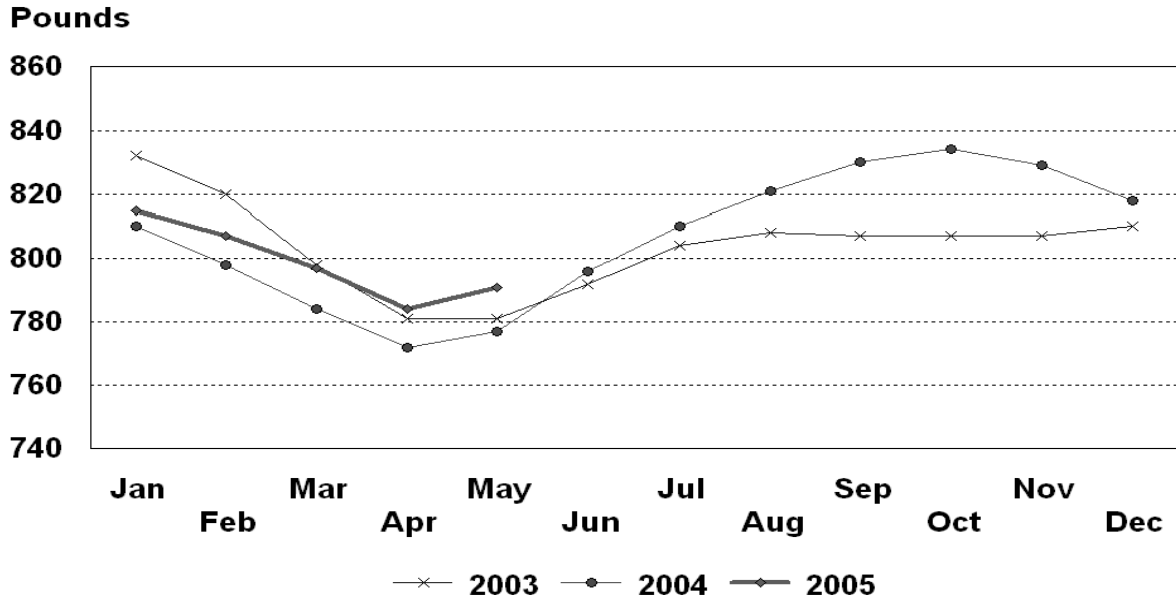
U.S. Monthly Federally Inspected Average Dressed Weight Cattle



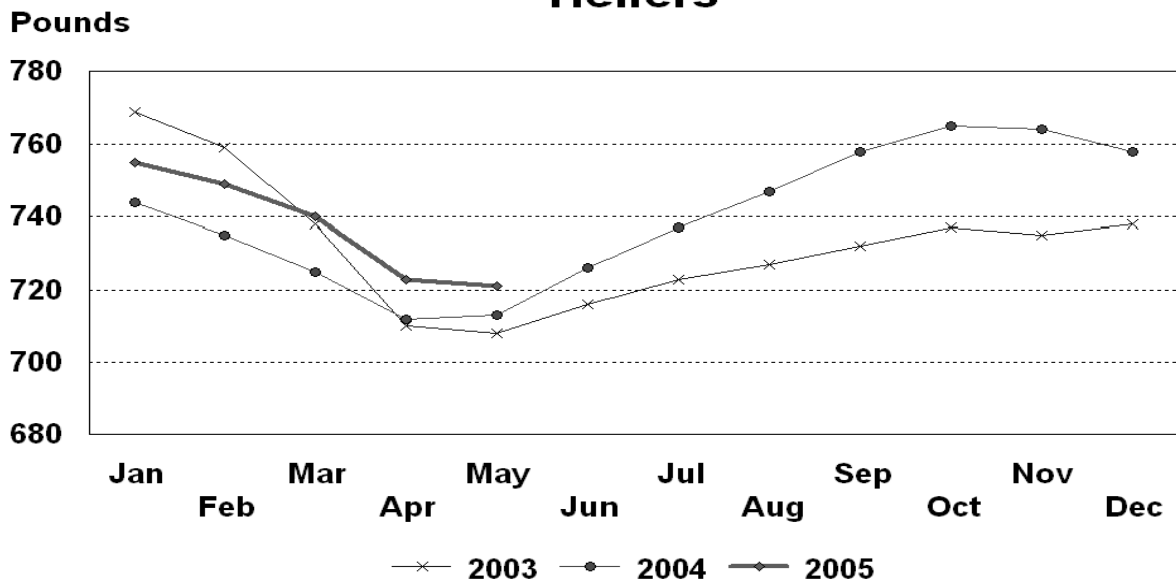
U.S. Monthly Federally Inspected Average Dressed Weight Hogs



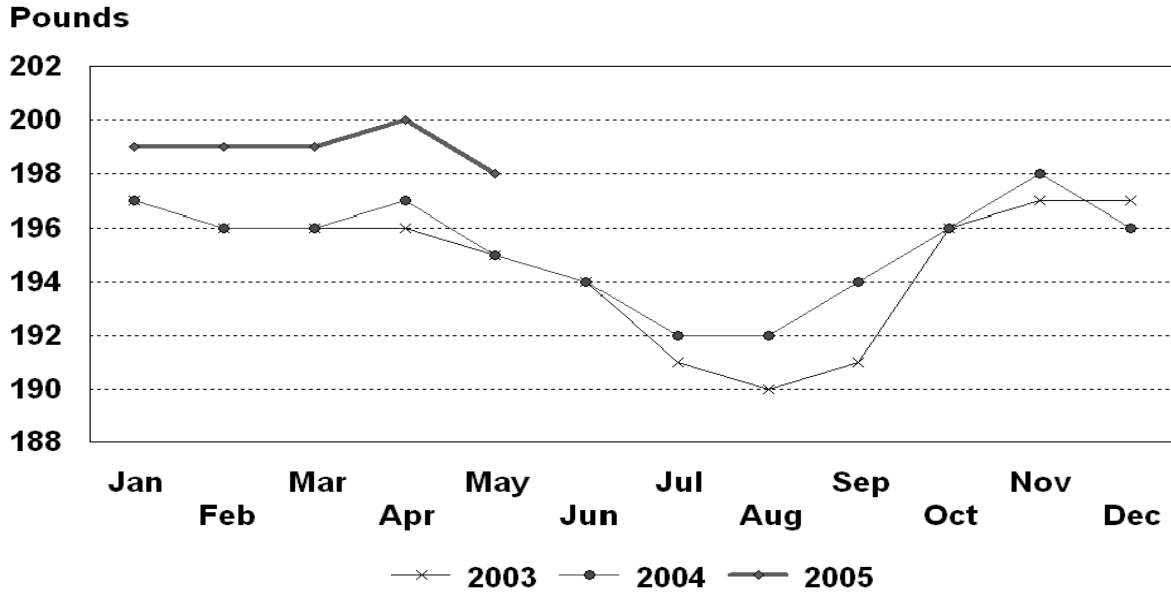
U.S. Monthly Federally Inspected Average Dressed Weight Steers



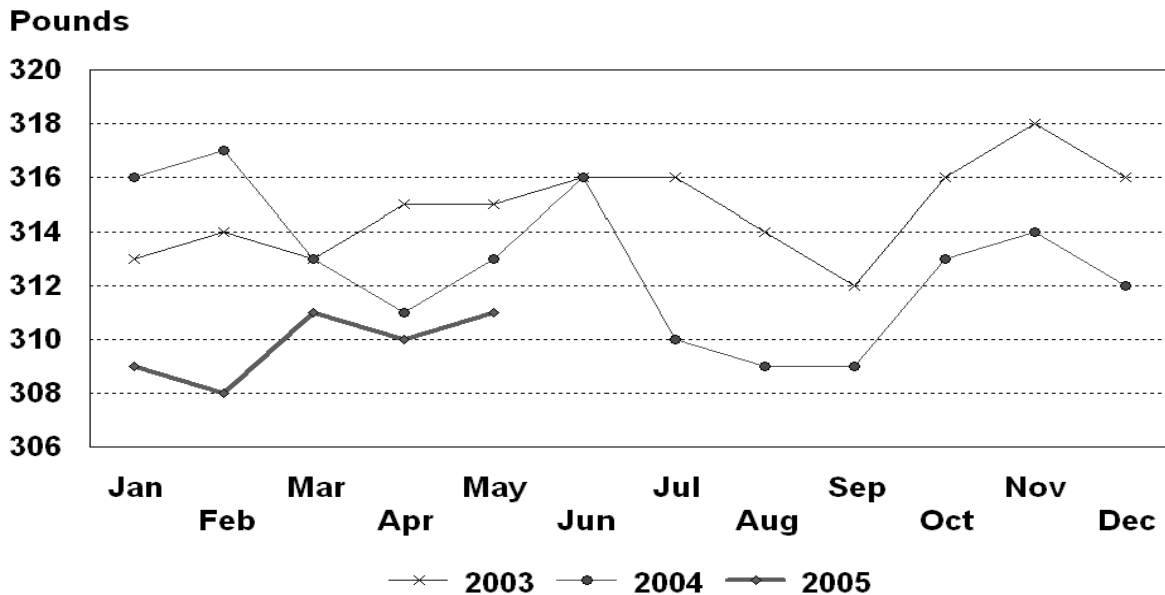
U.S. Monthly Federally Inspected Average Dressed Weight Heifers



U.S. Monthly Federally Inspected Average Dressed Weight Barrows and Gilts



U.S. Monthly Federally Inspected Average Dressed Weight Sows



Livestock Slaughter Estimates

Data Sources: Primary data for the commercial livestock slaughter estimates are obtained from the **Weekly Livestock Slaughter Report** (LS-149) questionnaires completed by inspectors from the Food Safety and Inspection Service (FSIS), USDA, which provide actual counts of animals slaughtered in Federally Inspected (FI) plants. These counts are combined with data from State-administered Non-Federally Inspected (NFI) slaughter plants to derive total commercial slaughter estimates. Over 95 percent of the total U.S. slaughter for any species is under FI. Number of head slaughtered daily under FI are recorded on the LS-149 forms by species and class. Head kill excluding animals condemned and total live and dressed weights are also given.

There are 850 plants in the U.S. operating under Federal Inspection and over 2,200 plants under State inspection. Slaughter from State-inspected Talmedge-Aiken plants is included in FI totals (see Types of Plants, page 20). To prevent duplication in reporting between NFI and FI plants and assure all FI plants are included, certificates prepared by FSIS identifying operating status are constantly monitored.

Revision Policy: Revisions are generally the result of late or corrected data and are less than one-half of 1 percent. Revisions for the previous month and the year-to-date totals are noted in each monthly release by an (*) or a footnote. Final data are published in the annual summary.

Procedures and Reliability: Individual inspectors may be contacted by telephone if the LS-149 is not received by NASS in time for summarization. This assures that all plants slaughtering a large number of head or several species are accounted for each week.

All head kill data are tabulated on a weekly basis approximately two weeks after the kill week. A computer edit compares each plant's data with the historical data for that plant. The edit provides a missing reports listing for follow-up telephone contact and imputes missing weight data. In addition, data are checked for unusual values for species, class, head kill, and pattern of kill, generally based on each plant's past operating profile.

If no form is received by mail or other means, data for plants slaughtering fewer than 50 total head weekly of only one species are imputed. Imputation of live and dressed weights may also be necessary on partially completed forms for any plant. The imputation is also based on the history of each respective plant and represents the recent operating characteristics until final data are tabulated. Imputed head kill for missing plants usually is less than 1 percent of the U.S. head kill totals. Imputation for live and dressed weight data for cattle is usually less than 10 percent and for hogs about 7 percent. The imputation for calves and sheep is more frequent and variable.

Head kill for FI slaughter before condemnation is for the actual days of the survey month, while head kill after condemnation and live and dressed weight data are for full weeks only. Average live and dressed weights and dressing percentages by State are compared with the

previous week as an additional check. Fluctuations are frequently the result of plants permanently or temporarily closing and a shift in the species reported.

FI data are summarized weekly and accumulated to a monthly total for this release, while NFI data are summarized monthly only. These weekly totals are published by USDA's Agricultural Marketing Service (AMS) in **Livestock, Meat, Wool Market News**, Weekly Summary, and Statistics.

Livestock slaughter estimates are based on a census of operating plants and therefore, have no sampling error. However, they may be subject to errors such as omissions, duplications and mistakes in reporting, recording and processing the data. These errors are minimized through rigid quality controls in the edit and summarization process, and a careful review of all reported data for consistency and reasonableness.

No data are published, unless permission is granted, if less than three plants slaughter a species in a State or if one plant has 70 percent or more of the total commercial slaughter for a species. If not published, these data are included in U.S. totals. A review of the data is made annually to determine publishibility.

Types of Plants

There are generally **four types** of slaughtering plants.

- (1) **Federally Inspected (FI) Plants:** Plants that transport meat interstate must employ federal inspectors to assure compliance with USDA standards. Any State whose commercial plants operate entirely under federal inspection may still have custom-exempt establishments for which NFI estimates are made.
- (2) **Talmedge-Aiken (TA) Plants:** Slaughter plants in which USDA is responsible for inspection. However, federal inspection is carried out by State employees. These plants are considered to be federally inspected.
- (3) **Non-Federally Inspected (NFI) Plants:** Plants which sell and transport only intrastate. State inspectors assure compliance with individual State standards for these NFI plants. Mobile slaughtering units are excluded and are considered farm slaughter.
- (4) **Custom-Exempt Plants:** Plants that do not sell meat but operate on a custom basis only are custom-exempt. The animals and meat are not inspected, but the facilities must meet health standards. These are considered NFI plants and head kill is included in NFI totals.

Terms and Definitions

Commercial Production: Includes slaughter and meat production in federally inspected and other plants, but excludes animals slaughtered on farms.

Dressed Weight: The weight of a chilled animal carcass. Beef with kidney knob in; veal with hide off; lamb and mutton with pluck out; pork with leaf fat and kidneys out, jowls on and head off.

Dressing Percent: Usually expressed as a percentage yield of chilled carcass in relation to the weight of the live animal on hoof. For example, a live hog that weighed 200 pounds on hoof and yielded a carcass weighing 140 pounds would have a dressing percentage of 70.

Food and Meat Inspection: Includes examination, checking, or testing of a carcass and/or meat against established government standards and involves checking the facility for cleanliness, health of animals, or parts of animals and quality of the meat produced.

Live Weight: The gross weight of a live animal when received at the slaughter plant.

Plant, Slaughter: An establishment where animals are killed and butchered.

Red Meat: Red meat production is the carcass weight after slaughter including beef, veal, pork, and lamb and mutton. It is derived using the number of head times average dressed weight for FI and NFI separately. FI head kill must be adjusted for condemnations using the factor derived from the FSIS inspection reports.

The FI meat production formula is $(\text{FI head kill}) \times (1 - \text{condemnation factor}) \times (\text{average dressed weight}) = \text{FI red meat production}$. The condemnation factor is the number of animals condemned as a percentage of the total kill. It has been fairly stable for the last five years; running about 1.90 head per 100 head for calves, .5 per 100 for cattle, .40 per 100 for hogs and .20 per 100 for sheep. The NFI meat production formula is $(\text{NFI head kill}) \times (\text{live weight}) \times (\text{FI dressing percentage}) = \text{NFI red meat production}$.

Slaughter: Killing and butchering of animals primarily for food.

Slaughter, Farm: Animals slaughtered on farms primarily for home consumption. Excludes custom slaughter for farmers at commercial establishments, but includes mobile slaughtering on farms. These estimates appear only in the annual slaughter release.

Wholesome Meat Act: Legislation that specifies that all meat produced for sale in the U.S. must be inspected. Meat that is transported interstate must be inspected in compliance with Federal (USDA) Standards.

Index

	Page
Commercial Calf Slaughter, Number, Total, and Average Live weight, by State and U.S.	6
Commercial Cattle Slaughter, Number, Total, and Average Live weight, by State and U.S.	5
Commercial Hog Slaughter, Number, Total and Average Live weight, by State and U.S.	7
Commercial Red Meat Production, by State and U.S.	4
Commercial Sheep and Lamb Slaughter, Number, Total, and Average Live weight, by State and U.S.	8
Data Sources, Revision Policy, and Procedures and Reliability	19
Federally Inspected Classification of Number and Average Dressed Weight, by Species and Class and U.S.	9
Federally Inspected Number by Species and Class, by Regions and U.S.	10
Federally Inspected Percent of Total Commercial, by Species, U.S.	12
Livestock Slaughter, Number and Average Weights, by Species and Type of Slaughter, U.S.	3
Red Meat Production, Commercial and FI, by Class, U.S.	2
Terms and Definitions	21
Types of Plants	20

ACCESS TO REPORTS!!

For your convenience, there are several ways to obtain NASS reports, data products, and services:

INTERNET ACCESS

All NASS reports are available free of charge on the worldwide Internet. For access, connect to the Internet and go to the NASS Home Page at: www.usda.gov/nass/. Select "Today's Reports" or Publications and then Reports Calendar or Publications and then Search, by Title or Subject.

E-MAIL SUBSCRIPTION

All NASS reports are available by subscription free of charge direct to your e-mail address. Starting with the NASS Home Page at www.usda.gov/nass/, click on **Publications**, then click on the **Subscribe by E-mail** button which takes you to the page describing e-mail delivery of reports. Finally, click on **Go to the Subscription Page** and follow the instructions.

PRINTED REPORTS OR DATA PRODUCTS

CALL OUR TOLL-FREE ORDER DESK: 800-999-6779 (U.S. and Canada)
Other areas, please call 703-605-6220 FAX: 703-605-6900
(Visa, MasterCard, check, or money order acceptable for payment.)

ASSISTANCE

For **assistance** with general agricultural statistics or further information about NASS or its products or services, contact the **Agricultural Statistics Hotline** at **800-727-9540**, 7:30 a.m. to 4:00 p.m. ET, or e-mail: nass@nass.usda.gov.

The U.S. Department of Agriculture (USDA) prohibits discrimination in all its programs and activities on the basis of race, color, national origin, sex, religion, age, disability, political beliefs, sexual orientation, and marital or family status. (Not all prohibited bases apply to all programs.) Persons with disabilities who require alternative means for communication of program information (Braille, large print, audiotape, etc.) should contact USDA's TARGET Center at 202-720-2600 (voice and TDD).

To file a complaint of discrimination, write USDA, Director, Office of Civil Rights, Room 326-W, Whitten Building, 14th and Independence Avenue, SW, Washington, DC 20250-9410 or call 202-720-5964 (voice and TDD). USDA is an equal opportunity provider and employer.