



NASS

FACT FINDERS FOR AGRICULTURE
UNITED STATES DEPARTMENT OF AGRICULTURE

Washington, D.C.

Livestock Slaughter

Released February 24, 2006, by the National Agricultural Statistics Service (NASS), Agricultural Statistics Board, U.S. Department of Agriculture. For information on *Livestock Slaughter* call Katy Paulsen at (515) 284-4340, office hours 8:00 a.m. to 4:30 p.m. CT.

Pork Production at Record High for January

Commercial red meat production for the United States totaled 3.89 billion pounds in January, up 7 percent from the 3.65 billion pounds produced in January 2005.

Beef production, at 2.04 billion pounds, was 7 percent above the previous year. Cattle slaughter totaled 2.64 million head, up 5 percent from January 2005. The average live weight was up 19 pounds from the previous year, at 1,281 pounds.

Veal production totaled 12.5 million pounds, 6 percent below January a year ago. Calf slaughter totaled 55,700 head, down 18 percent from January 2005. The average live weight was 39 pounds above last year, at 368 pounds.

Pork production totaled 1.82 billion pounds, up 7 percent from the previous year. Hog kill totaled 8.92 million head, 5 percent above January 2005. The average live weight was 3 pounds above the previous year, at 273 pounds.

Lamb and mutton production, at 16.2 million pounds, was up 12 percent from January 2005. Sheep slaughter totaled 223,700 head, 7 percent above last year. The average live weight was 144 pounds, up 6 pounds from January a year ago.

January 2005 contained 21 weekdays (including one holiday) and 5 Saturdays.

January 2006 contained 22 weekdays (including two holidays) and 4 Saturdays.

Commercial Red Meat Production: United States ¹

Class	Jan 2005	Dec 2005	Jan 2006	Jan 06 % of		Jan ²		
				Jan 2005	Dec 2005	2005	2006	06 as % of 05
	<i>Million Pounds</i>	<i>Million Pounds</i>	<i>Million Pounds</i>	<i>Percent</i>	<i>Percent</i>	<i>Million Pounds</i>	<i>Million Pounds</i>	<i>Percent</i>
Beef	1,915	2,057	2,044	107	99	1,915	2,044	107
Veal	13.3	13.5	12.5	94	93	13.3	12.5	94
Pork	1,705	1,866	1,817	107	97	1,705	1,817	107
Lamb & Mutton	14.4	16.5	16.2	112	98	14.4	16.2	112
Total Red Meat	3,648	3,953	3,890	107	98	3,648	3,890	107

¹ Based on packers' dressed weights and excludes farm slaughter.

² Accumulated totals and percentages based on unrounded data.

Federally Inspected Red Meat Production: United States ¹

Class	Jan 2005	Dec 2005	Jan 2006	Jan 06 % of		Jan ²		
				Jan 2005	Dec 2005	2005	2006	06 as % of 05
	<i>Million Pounds</i>	<i>Million Pounds</i>	<i>Million Pounds</i>	<i>Percent</i>	<i>Percent</i>	<i>Million Pounds</i>	<i>Million Pounds</i>	<i>Percent</i>
Beef	1,884	2,027	2,012	107	99	1,884	2,012	107
Veal	13.0	13.1	12.2	94	93	13.0	12.2	94
Pork	1,692	1,850	1,803	107	97	1,692	1,803	107
Lamb & Mutton	13.7	15.9	15.4	112	97	13.7	15.4	112
Total Red Meat	3,602	3,906	3,843	107	98	3,602	3,843	107

¹ Based on packers' dressed weights and excludes farm slaughter.

² Accumulated totals and percentages based on unrounded data.

Livestock Slaughter: Number and Average Weights, United States ¹

Species	Unit	Jan 2005	Dec 2005	Jan 2006	Jan 06 % of		Jan ²		
					Jan 2005	Dec 2005	2005	2006	06 % of 05
					<i>Percent</i>	<i>Percent</i>			<i>Prct</i>
Cattle No.									
Fed. Insp.	Thou	2,476.9	2,619.4	2,591.3	105	99	2,476.9	2,591.3	105
Other	Thou	50.9	46.5	50.4	99	108	50.9	50.4	99
Comm'l. ³	Thou	2,527.8	2,665.9	2,641.7	105	99	2,527.8	2,641.7	105
Live Wt/Hd									
Fed. Insp.	Lbs	1,265	1,283	1,285	102	100	1,265	1,285	102
Other	Lbs	1,112	1,134	1,124	101	99	1,112	1,124	101
Comm'l.	Lbs	1,262	1,281	1,281	102	100	1,262	1,281	102
Calves No.									
Fed. Insp.	Thou	66.3	58.7	54.5	82	93	66.3	54.5	82
Other	Thou	1.7	1.4	1.2	71	87	1.7	1.2	71
Comm'l. ³	Thou	68.0	60.1	55.7	82	93	68.0	55.7	82
Live Wt/Hd									
Fed. Insp.	Lbs	326	367	368	113	100	326	368	113
Other	Lbs	384	430	415	108	96	384	415	108
Comm'l.	Lbs	329	370	368	112	99	329	368	112
Hogs No.									
Fed. Insp.	Thou	8,402.1	9,137.6	8,834.1	105	97	8,402.1	8,834.1	105
Other	Thou	77.9	95.6	81.6	105	85	77.9	81.6	105
Comm'l. ³	Thou	8,480.0	9,233.3	8,915.7	105	97	8,480.0	8,915.7	105
Live Wt/Hd									
Fed. Insp.	Lbs	270	272	273	101	100	270	273	101
Other	Lbs	238	227	237	100	104	238	237	100
Comm'l.	Lbs	270	272	273	101	100	270	273	101
Sheep&Lambs No.									
Fed. Insp.	Thou	194.8	218.9	209.1	107	96	194.8	209.1	107
Other	Thou	13.7	12.2	14.6	107	120	13.7	14.6	107
Comm'l. ³	Thou	208.5	231.0	223.7	107	97	208.5	223.7	107
Live Wt/Hd									
Fed. Insp.	Lbs	140	145	146	104	101	140	146	104
Other	Lbs	101	107	109	108	101	101	109	108
Comm'l.	Lbs	138	143	144	104	101	138	144	104

¹ Excludes slaughter on farms.

² Accumulated totals and percentages based on unrounded data.

³ Totals may not equal sum of the parts due to rounding.

Commercial Red Meat Production: By State and United States ¹

State	Jan 2005	Dec 2005	Jan 2006	Jan 06 as % of ²	
				Jan 2005	Dec 2005
	<i>Million Pounds</i>	<i>Million Pounds</i>	<i>Million Pounds</i>	<i>Percent</i>	<i>Percent</i>
AL	2.6	2.5	2.7	103	104
AK		0.1	0.1	124	96
AZ	28.3	34.1	33.1	117	97
AR	4.7	6.0	4.6	99	77
CA	125.1	134.6	129.7	104	96
CO	136.6	142.1	148.9	109	105
DE-MD	3.1	3.3	3.3	105	100
FL	4.4	4.4	4.9	112	112
GA	12.6	10.6	10.7	85	101
HI	0.7	0.9	0.7	107	86
ID	22.5	19.6	23.5	104	120
IL	213.1	238.2	226.4	106	95
IN	118.1	125.7	129.2	109	103
IA	513.6	585.4	577.7	112	99
KS	436.9	465.7	469.4	107	101
KY	40.3	42.3	45.5	113	108
LA	1.0	0.9	0.6	58	65
MI	32.6	35.7	33.4	103	94
MN	194.4	206.2	206.9	106	100
MS	25.9	24.2	27.6	107	114
MO	41.8	41.8	50.3	120	120
MT	1.2	1.4	1.4	121	101
NE	562.9	582.5	571.6	102	98
NV	0.1	0.1	0.1	110	125
N ENG ³	1.0	1.2	1.0	106	87
NJ	4.2	4.3	4.3	102	99
NM	0.5	0.5	0.5	95	101
NY	2.8	3.7	3.5	125	94
NC	190.5	206.8	202.3	106	98
ND	2.8	2.8	3.0	107	108
OH	25.5	25.1	23.9	94	95
OK	89.5	95.6	91.6	102	96
OR	3.0	3.8	4.0	132	104
PA	90.1	106.0	99.2	110	94
SC	20.2	20.8	20.9	103	100
SD	77.8	97.0	91.1	117	94
TN	18.1	22.5	19.0	105	84
TX	351.0	388.6	378.2	108	97
UT	36.7	42.3	40.3	110	95
VA	61.2	47.0	36.3	59	77
WA	45.0	64.7	60.8	135	94
WV	0.6	0.7	0.6	100	79
WI	104.2	110.3	107.0	103	97
WY	0.6	0.5	0.6	100	118
US	3,648.0	3,952.7	3,890.4	107	98

¹ Includes total beef, veal, pork, lamb, and mutton.

² Percentages based on unrounded data.

³ N ENG includes CT, ME, MA, NH, RI, and VT.

**Commercial Cattle Slaughter: By State and United States,
January 2005 and 2006 ¹**

State	Number Slaughtered		Total Live Weight		Average Live Weight	
	2005	2006	2005	2006	2005	2006
	<i>1,000 Head</i>	<i>1,000 Head</i>	<i>1,000 Pounds</i>	<i>1,000 Pounds</i>	<i>Pounds</i>	<i>Pounds</i>
AL	0.3	0.3	264	287	811	856
AK	0.1	0.1	63	75	1,158	1,155
AZ						
AR	1.1	0.8	1,045	751	926	952
CA	120.0	120.0	158,022	166,357	1,317	1,387
CO	160.0	168.8	207,550	224,976	1,298	1,333
DE-MD	3.4	3.5	4,389	4,663	1,295	1,324
FL						
GA	21.9	18.8	19,455	15,870	888	844
HI	0.7	0.8	724	814	1,067	1,017
ID	28.7	27.5	37,243	34,875	1,296	1,269
IL						
IN	3.5	3.4	3,615	3,562	1,047	1,043
IA						
KS	551.6	575.5	688,384	729,785	1,248	1,268
KY	1.7	1.7	1,459	1,523	884	908
LA	1.1	0.6	948	465	901	793
MI	36.0	37.5	49,591	51,714	1,376	1,379
MN	62.3	63.4	88,588	89,135	1,421	1,406
MS		0.1		85		893
MO	7.7	8.1	9,740	10,494	1,261	1,297
MT	1.4	1.7	1,558	1,987	1,147	1,142
NE	555.2	555.6	727,874	728,631	1,311	1,311
NV	0.1	0.1	92	104	1,120	1,193
N ENG ²	1.2	1.3	1,207	1,254	996	999
NJ	2.3	2.3	2,830	2,800	1,211	1,218
NM	0.9	0.9	900	938	1,002	1,009
NY	3.4	2.9	3,836	3,322	1,120	1,150
NC	17.9	17.7	17,328	17,936	969	1,013
ND	1.0	1.1	1,221	1,374	1,175	1,227
OH	9.5	8.6	10,880	9,646	1,140	1,120
OK	2.2	2.7	2,377	2,867	1,072	1,049
OR	1.4	1.8	1,771	2,289	1,241	1,256
PA	64.1	67.9	77,709	85,459	1,212	1,259
SC		12.7		14,486		1,138
SD						
TN	1.3	1.5	1,258	1,373	978	925
TX	473.6	496.1	564,288	603,826	1,191	1,217
UT	48.1	51.3	57,710	63,369	1,200	1,234
VA	1.3	1.0	1,338	1,061	1,024	1,112
WA	59.0	76.2	73,727	99,288	1,249	1,304
WV	0.9	0.9	868	863	942	1,006
WI	124.5	126.1	167,265	172,985	1,343	1,372
WY	0.8	0.8	904	888	1,173	1,183
US ³	2,527.8	2,641.7	3,189,651	3,385,304	1,262	1,281

¹ Includes slaughter under Federal inspection and other Commercial slaughter, excludes farm slaughter.

² N ENG includes CT, ME, MA, NH, RI, and VT.

³ States with no data printed are still included in the US total, data not printed to avoid disclosing individual operations. Accumulated totals and percentages based on unrounded data.

**Commercial Calf Slaughter: By State and United States,
January 2005 and 2006 ¹**

State	Number Slaughtered		Total Live Weight		Average Live Weight	
	2005	2006	2005	2006	2005	2006
	<i>1,000 Head</i>	<i>1,000 Head</i>	<i>1,000 Pounds</i>	<i>1,000 Pounds</i>	<i>Pounds</i>	<i>Pounds</i>
AL						
AK						
AZ						
AR						
CA	8.9	6.5	1,218	1,090	136	167
CO						
DE-MD	0.1	0.1	25	35	299	322
FL						
GA	0.2	0.1	98	49	486	441
HI						
ID						
IL	7.0	4.2	2,884	1,833	414	435
IN	0.7	0.2	86	27	127	126
IA						
KS						
KY	0.1	0.1	29	29	469	463
LA	0.6	0.3	295	162	475	494
MI	1.7	1.9	729	706	424	374
MN						
MS						
MO						
MT						
NE						
NV						
N ENG ²	0.5	0.3	83	74	171	281
NJ	5.9	6.7	2,565	2,901	438	432
NM						
NY	9.1	8.8	765	1,991	84	226
NC						
ND						
OH	4.6	0.8	1,844	326	399	397
OK		0.1		30		462
OR						
PA	14.8	13.4	5,575	5,688	376	424
SC						
SD						
TN	0.1	0.1	72	40	519	537
TX	1.1	0.8	641	498	571	594
UT						
VA						
WA						
WV						
WI	11.4	10.3	5,167	4,660	452	452
WY						
US ³	68.0	55.7	22,342	20,463	329	368

¹ Includes slaughter under Federal inspection and other Commercial slaughter, excludes farm slaughter.

² N ENG includes CT, ME, MA, NH, RI, and VT.

³ States with no data printed are still included in the US total, data not printed to avoid disclosing individual operations. Accumulated totals and percentages based on unrounded data.

**Commercial Hog Slaughter: By State and United States,
January 2005 and 2006 ¹**

State	Number Slaughtered		Total Live Weight		Average Live Weight	
	2005	2006	2005	2006	2005	2006
	<i>1,000 Head</i>	<i>1,000 Head</i>	<i>1,000 Pounds</i>	<i>1,000 Pounds</i>	<i>Pounds</i>	<i>Pounds</i>
AL	9.0	9.7	4,292	4,480	475	462
AK	0.1	0.1	9	17	179	306
AZ	0.4	0.3	50	50	134	174
AR	13.0	12.9	6,561	6,710	504	520
CA	207.7	216.9	50,395	51,131	243	236
CO	1.0	1.0	262	269	275	266
DE-MD	1.8	1.9	482	489	264	264
FL	6.5	5.1	969	677	149	132
GA	9.3	10.5	2,297	2,490	246	238
HI	2.0	1.8	402	394	197	216
ID	12.8	13.0	4,193	4,254	326	328
IL	760.8	800.8	210,976	225,591	277	282
IN	574.3	620.8	153,724	167,702	268	270
IA	2,426.0	2,607.6	660,595	718,749	272	276
KS		20.3		7,938		392
KY	197.2	218.3	52,511	59,328	266	272
LA	1.7	1.3	325	280	190	212
MI	10.2	9.8	3,895	3,619	384	368
MN	750.2	806.7	198,914	215,152	265	267
MS						
MO						
MT	1.2	1.1	282	266	240	246
NE	578.5	612.7	156,271	167,374	270	273
NV						
N ENG ²	1.2	1.3	251	276	212	216
NJ	9.8	10.7	1,033	1,041	105	97
NM	0.2	0.1	54	33	267	260
NY	2.2	2.2	497	494	222	220
NC	935.8	988.6	241,675	256,928	258	260
ND	13.7	13.7	3,219	3,382	236	247
OH	93.9	94.2	25,740	25,881	274	275
OK	415.6	410.2	117,233	118,679	282	289
OR	14.8	17.6	3,309	4,289	223	243
PA	230.8	245.6	55,786	60,823	242	248
SC						
SD	360.8	420.7	94,254	112,757	261	268
TN	53.7	57.0	26,028	27,205	485	477
TX	28.3	32.1	6,954	7,609	246	237
UT	3.3	3.3	766	783	229	239
VA	313.6	182.5	80,021	47,361	255	259
WA	1.7	2.1	432	541	253	252
WV	0.6	0.5	154	143	259	272
WI	41.4	39.2	18,320	17,556	443	448
WY	0.3	0.3	86	93	250	273
US ³	8,480.0	8,915.7	2,288,913	2,435,864	270	273

¹ Includes slaughter under Federal inspection and other Commercial slaughter, excludes farm slaughter.

² N ENG includes CT, ME, MA, NH, RI, and VT.

³ States with no data printed are still included in the US total, data not printed to avoid disclosing individual operations. Accumulated totals and percentages based on unrounded data.

**Commercial Sheep and Lamb Slaughter: By State and United States,
January 2005 and 2006 ¹**

State	Number Slaughtered		Total Live Weight		Average Live Weight	
	2005	2006	2005	2006	2005	2006
	<i>1,000 Head</i>	<i>1,000 Head</i>	<i>1,000 Pounds</i>	<i>1,000 Pounds</i>	<i>Pounds</i>	<i>Pounds</i>
AL						
AK						
AZ	0.1	0.1	13	7	135	83
AR						
CA						
CO	74.7	82.3	11,436	13,152	153	160
DE-MD	3.1	3.2	330	330	105	103
FL	0.2	0.1	11	9	75	80
GA	0.5	0.3	58	36	112	106
HI						
ID	0.3	0.3	36	39	108	126
IL	15.3	17.6	2,180	2,615	142	148
IN	1.6	1.6	162	172	104	106
IA	32.3	30.9	5,105	4,884	158	158
KS	0.3	0.2	24	24	91	105
KY	0.8	0.9	103	116	124	123
LA	0.1	0.1	9	7	85	89
MI	15.1	14.4	2,034	1,958	135	136
MN	0.2	0.2	22	24	120	135
MS						
MO	0.4	0.5	39	43	91	94
MT	0.2	0.2	30	30	128	124
NE	0.1	2.5	12	364	113	144
NV	0.1	0.1	8	7	99	112
N ENG ²	1.4	1.9	143	186	99	98
NJ	10.5	8.1	886	709	84	87
NM	1.3	0.7	161	85	125	125
NY	3.6	3.4	260	298	73	87
NC	0.7	0.5	54	46	81	84
ND						
OH	0.9	1.0	94	110	105	110
OK						
OR	1.2	1.6	141	220	122	139
PA	4.2	4.0	403	389	95	97
SC						
SD	0.6	0.9	79	118	123	131
TN	0.7	1.0	56	74	75	75
TX	12.2	12.8	1,446	1,726	118	135
UT	2.5	2.7	340	375	134	141
VA	0.5	1.1	41	104	91	99
WA	0.2	0.2	29	23	141	134
WV						
WI	0.7	0.9	98	120	136	139
WY	0.1	0.1	18	14	129	133
US ³	208.5	223.7	28,760	32,236	138	144

¹ Includes slaughter under Federal inspection and other Commercial slaughter, excludes farm slaughter.

² N ENG includes CT, ME, MA, NH, RI, and VT.

³ States with no data printed are still included in the US total, data not printed to avoid disclosing individual operations. Accumulated totals and percentages based on unrounded data.

**Classification of Livestock Slaughtered Under Federal Inspection:
United States**

Item	Jan	Dec	Jan	Jan ¹		Jan	Dec	Jan	Jan ¹	
	2005	2005	2006	2005	2006	2005	2005	2006	2005	2006
	<i>1,000 Head</i>	<i>1,000 Head</i>	<i>1,000 Head</i>	<i>1,000 Head</i>	<i>1,000 Head</i>	<i>Percent of Total</i>	<i>Percent of Total</i>	<i>Percent of Total</i>	<i>Percent of Total</i>	<i>Percent of Total</i>
Class ²										
Cattle										
Steers	1,226	1,351	1,321	1,226	1,321	49.5	51.6	51.0	49.5	51.0
Heifers	767	801	779	767	779	31.0	30.6	30.1	31.0	30.1
All Cows	442	430	449	442	449	17.8	16.4	17.3	17.8	17.3
Dairy Cows	217	200	202	217	202	8.7	7.6	7.8	8.7	7.8
Other Cows	225	230	247	225	247	9.1	8.8	9.5	9.1	9.5
Bulls & Stags	43	37	43	43	43	1.7	1.4	1.7	1.7	1.7
Total ¹	2,477	2,619	2,591	2,477	2,591	100.0	100.0	100.0	100.0	100.0
Hogs										
Barrows & Gilts	8,125	8,847	8,551	8,125	8,551	96.7	96.8	96.8	96.7	96.8
Sows	256	266	258	256	258	3.0	2.9	2.9	3.0	2.9
Stags & Boars	21	24	25	21	25	0.3	0.3	0.3	0.3	0.3
Total ¹	8,402	9,138	8,834	8,402	8,834	100.0	100.0	100.0	100.0	100.0
Sheep										
Mature Sheep	10	11	9	10	9	5.2	4.8	4.4	5.2	4.4
Lambs & Yrlngs	185	208	200	185	200	94.8	95.2	95.6	94.8	95.6
Total ¹	195	219	209	195	209	100.0	100.0	100.0	100.0	100.0
Average Dressed Weight ³										
	<i>Pounds</i>	<i>Pounds</i>	<i>Pounds</i>	<i>Pounds</i>	<i>Pounds</i>					
Cattle										
Steers ⁴	765	778	780	765	780					
Heifers ⁴	815	829	830	815	830					
All Cows ⁴	755	769	769	755	769					
Bulls & Stags ⁴	624	622	635	624	635					
Calves & Vealers	916	901	923	916	923					
Hogs										
Barrow Gilts ⁵	199	227	226	199	226					
Sows ⁵	202	203	204	202	204					
Stags & Boars ⁵	199	200	201	199	201					
	308	312	309	308	309					
	210	216	217	210	217					
Sheep										
Mature Sheep ⁶	70	73	74	70	74					
Lamb & Yrlngs ⁶	67	68	68	67	68					
	71	73	74	71	74					

¹ Total and percentages based on unrounded data.

² Species totals and classification reported by meat inspectors, Inspection Operations, FSIS.

³ Based on packer reports.

⁴ Included in cattle average dressed weight.

⁵ Included in hog average dressed weight.

⁶ Included in sheep average dressed weight.

**Federally Inspected Slaughter: By Region and United States,
January 2006 ¹**

Standard Federal Regions	Cattle							Calves
	Total ²	Steers	Heifers	Cows			Bulls & Stags	Total
				All	Dairy	Other		
	<i>1,000 Head</i>	<i>1,000 Head</i>	<i>1,000 Head</i>	<i>1,000 Head</i>	<i>1,000 Head</i>	<i>1,000 Head</i>	<i>1,000 Head</i>	<i>1,000 Head</i>
1	1.0	0.4	0.2					0.2
2	5.0	1.8	0.4	2.6	2.5	0.1	0.3	15.5
3	69.9	28.3	5.5	34.2	27.4	6.8	2.0	13.6
4	58.1	1.1	0.3	49.3	12.7	36.5	7.4	
5	288.7	113.7	32.6	135.0	65.9	69.1	7.5	17.3
6	494.8	261.6	149.0	73.0	12.4	60.5	11.2	0.6
7	1,178.4	661.2	453.2	55.2	1.5	53.7	8.8	
8	229.9	116.3	97.8					
9	161.1	77.0	5.7	75.3	66.6	8.7	3.1	6.3
10	104.4	59.5	34.5	9.9	7.2	2.7	0.5	
US ²	2,591.3	1,320.8	779.2	448.4	201.5	246.9	42.8	54.5
	Hogs				Sheep			
	Total ²	Barrows & Gilts	Sows	Stags & Boars	Total ²	Mature Sheep	Lambs & Yearlings	
	<i>1,000 Head</i>	<i>1,000 Head</i>	<i>1,000 Head</i>	<i>1,000 Head</i>	<i>1,000 Head</i>	<i>1,000 Head</i>	<i>1,000 Head</i>	
1	1.0	1.0						
2	12.8	12.5	0.2	0.1	9.4	1.0	8.4	
3	428.2	427.1	1.0		8.1	0.3	7.7	
4	1,472.2	1,386.9	83.1	2.3	2.8	1.0	1.8	
5	2,340.5	2,237.1	100.2	3.2	31.4	3.5	27.8	
6	448.9	428.0	20.8	0.1	10.9	0.3	10.6	
7	3,451.0	3,382.4			33.8	0.6	33.2	
8	435.5	431.9	3.6		85.2	1.8	83.4	
9	212.4	212.3						
10	31.5	31.4	0.1		1.7	0.1	1.6	
US ²	8,834.1	8,550.7	258.3	25.1	209.1	9.2	199.9	

¹ States included in regions are as follows: 1- CT, ME, NH, VT, MA, & RI; 2- NY & NJ; 3- DE-MD, PA, WV, & VA; 4- AL, FL, GA, KY, MS, NC, SC, & TN; 5- IL, IN, MI, MN, OH, & WI; 6- AR, LA, NM, OK, & TX; 7- IA, KS, MO, & NE; 8- CO, MT, ND, SD, UT, & WY; 9- AZ, CA, HI & NV; 10- AK, ID, OR, & WA.

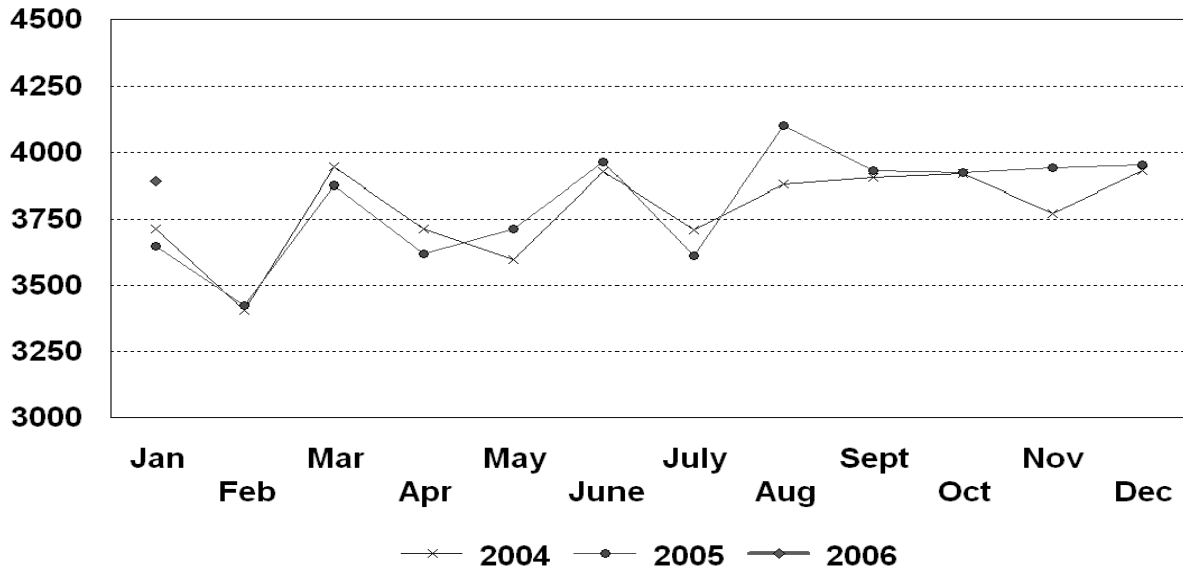
² Totals may not add due to rounding.

Federally Inspected Slaughter: Percent of Total Commercial Slaughter by Species, United States

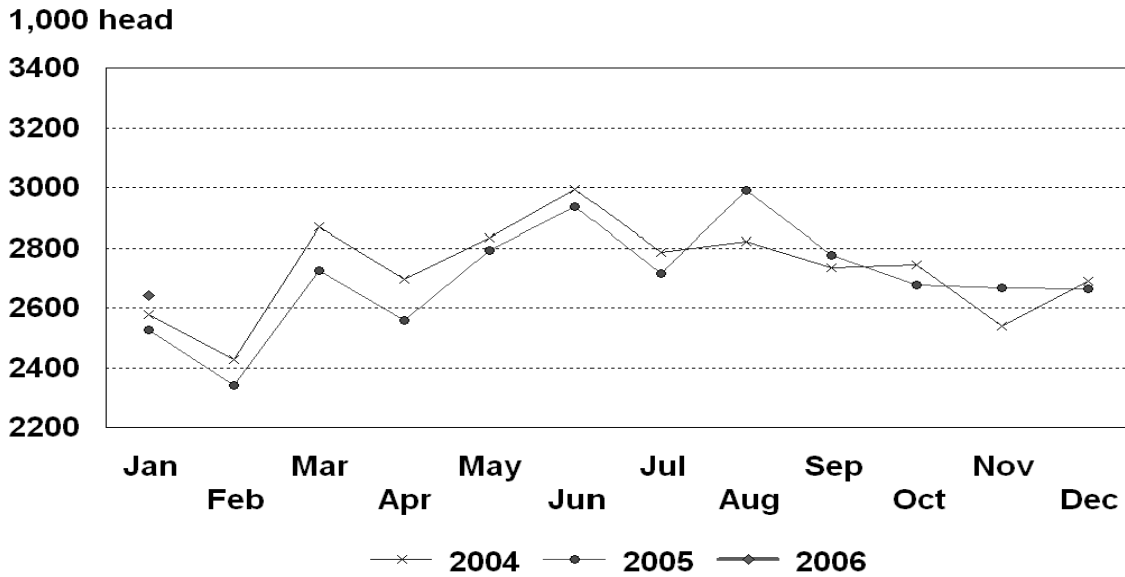
Species	Jan 2005	Dec 2005	Jan 2006	January	
				2005	2006
	<i>Percent</i>	<i>Percent</i>	<i>Percent</i>	<i>Percent</i>	<i>Percent</i>
Cattle	98.0	98.3	98.1	98.0	98.1
Calves	97.5	97.7	97.9	97.5	97.9
Hogs	99.1	99.0	99.1	99.1	99.1
Sheep	93.4	94.7	93.5	93.4	93.5

U.S. Monthly Commercial Red Meat Production

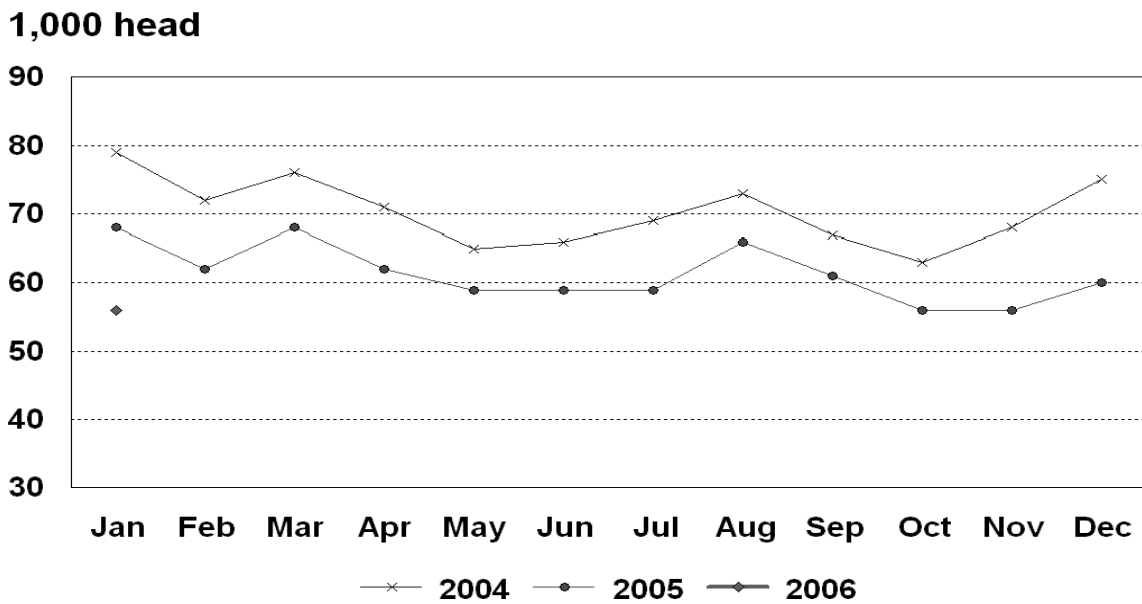
Million Pounds



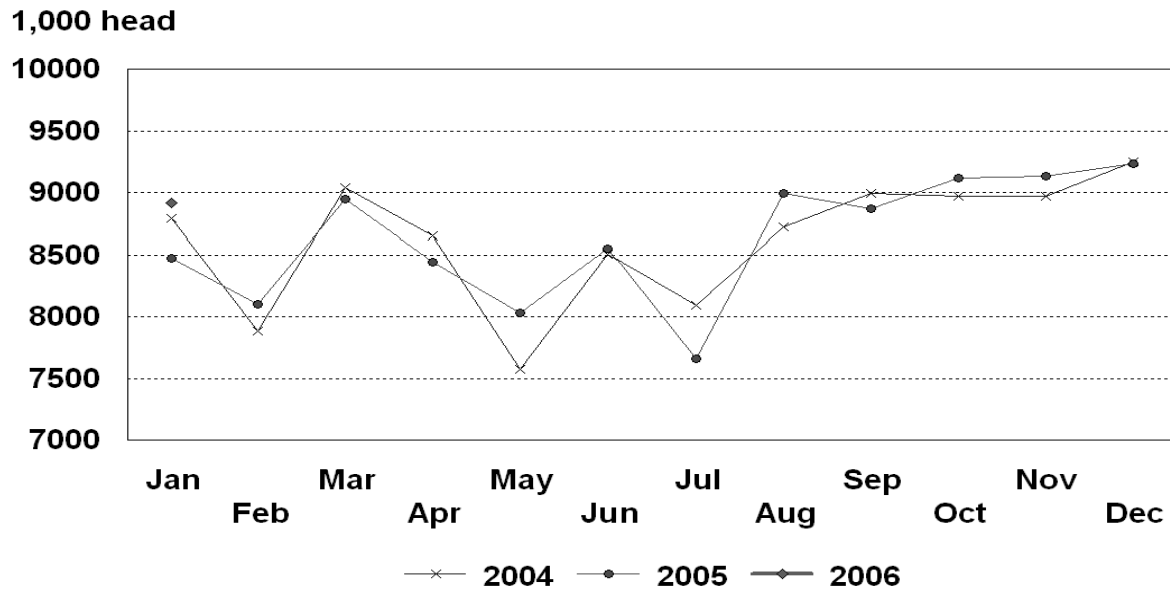
U.S. Monthly Commercial Slaughter Cattle



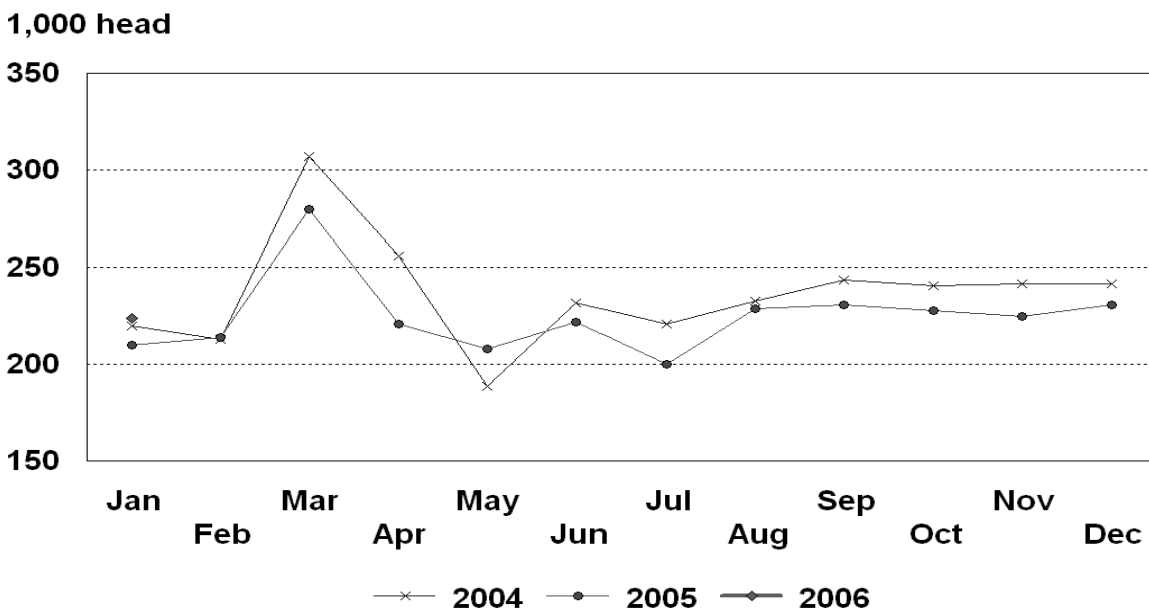
U.S. Monthly Commercial Slaughter Calves



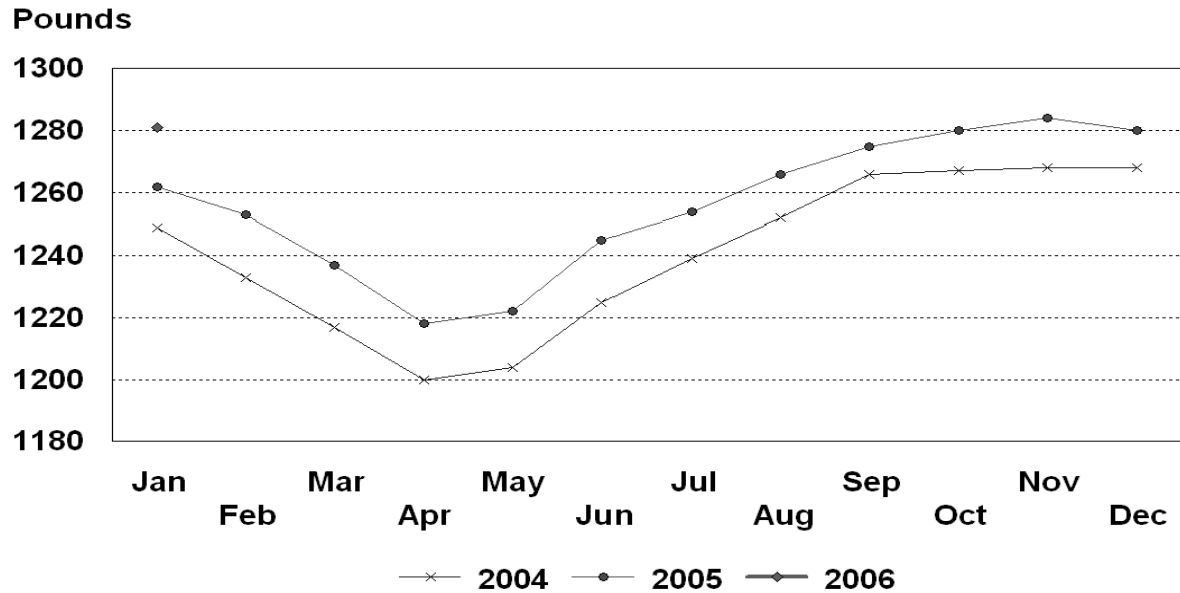
U.S. Monthly Commercial Slaughter Hogs



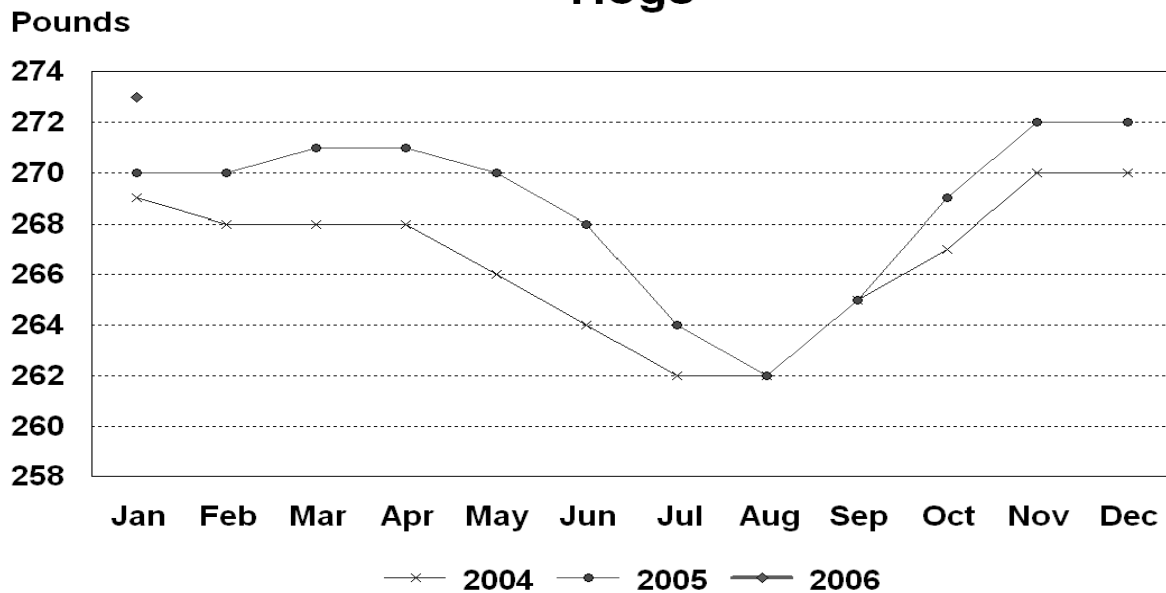
U.S. Monthly Commercial Slaughter Sheep



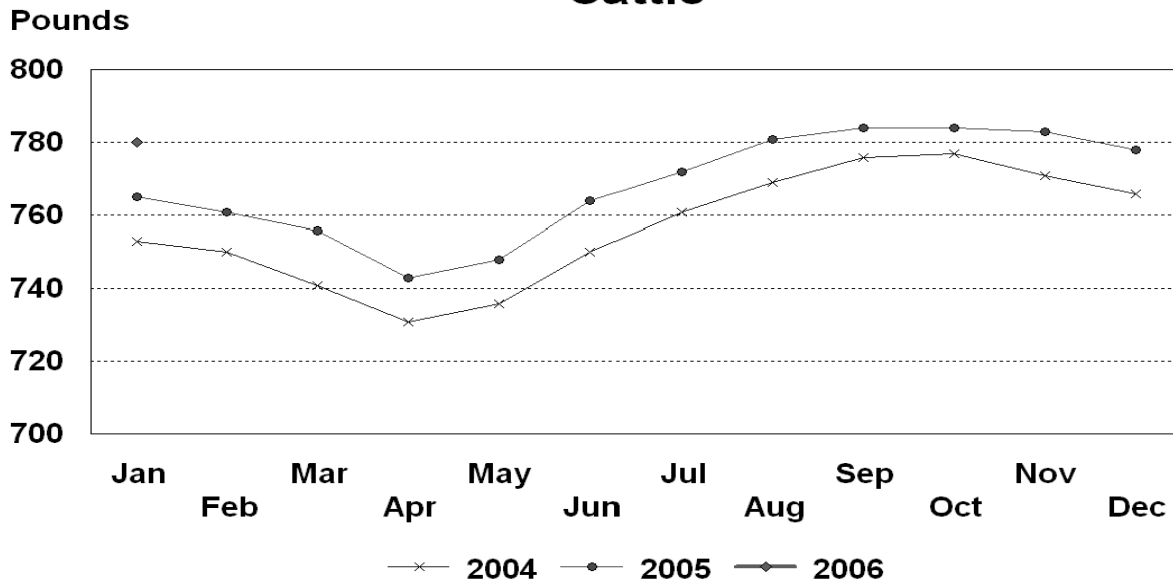
U.S. Monthly Commercial Slaughter Average Live Weight Cattle



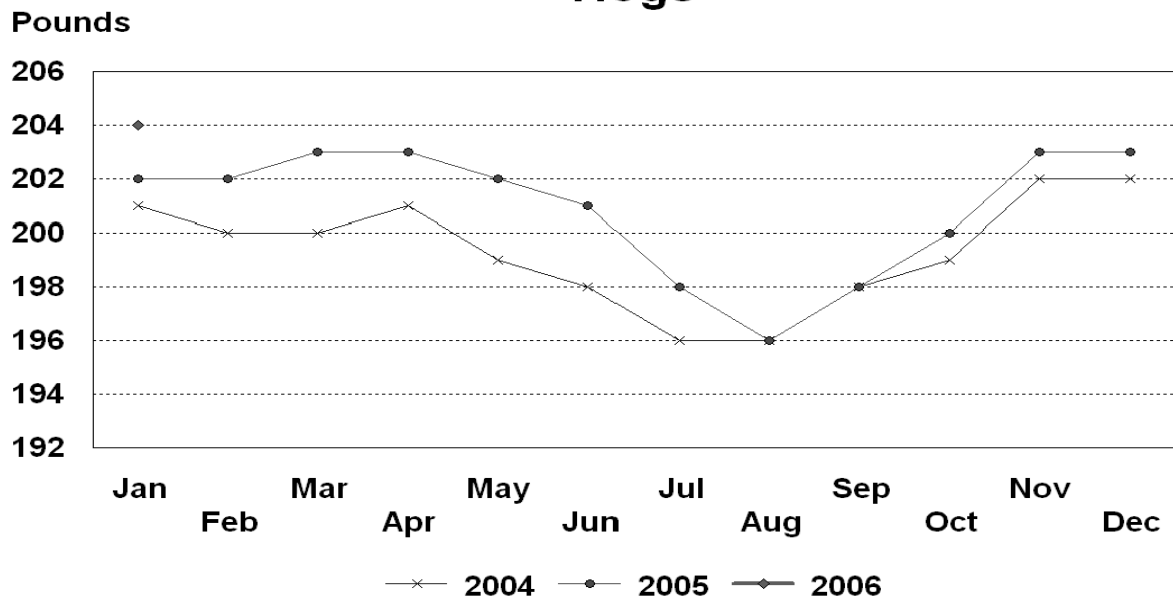
U.S. Monthly Commercial Slaughter Average Live Weight Hogs



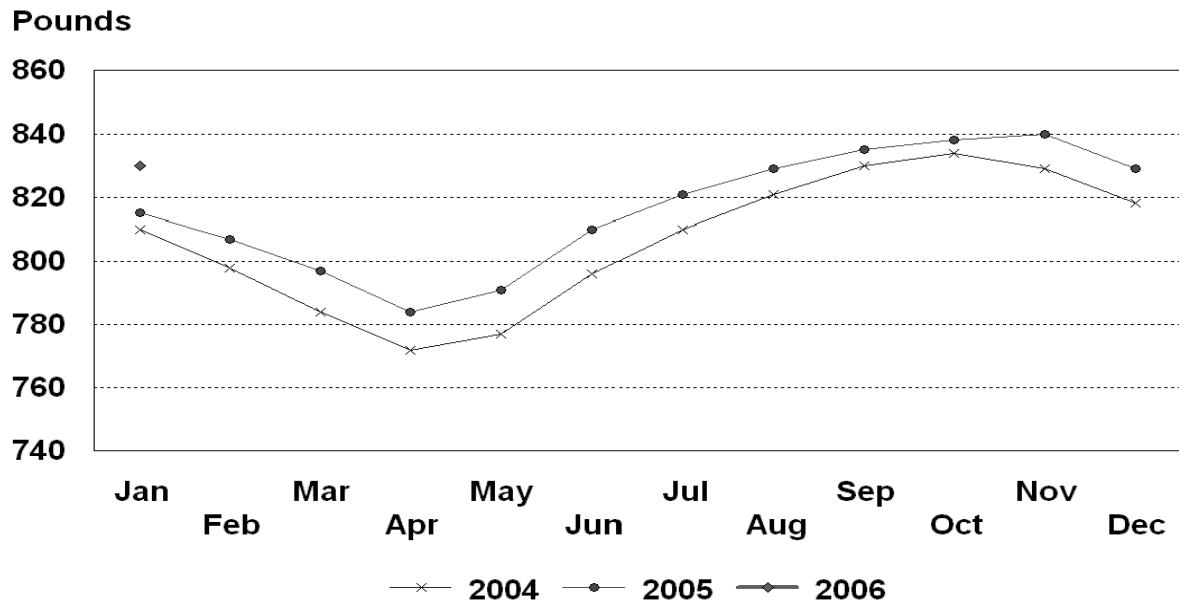
U.S. Monthly Federally Inspected Average Dressed Weight Cattle



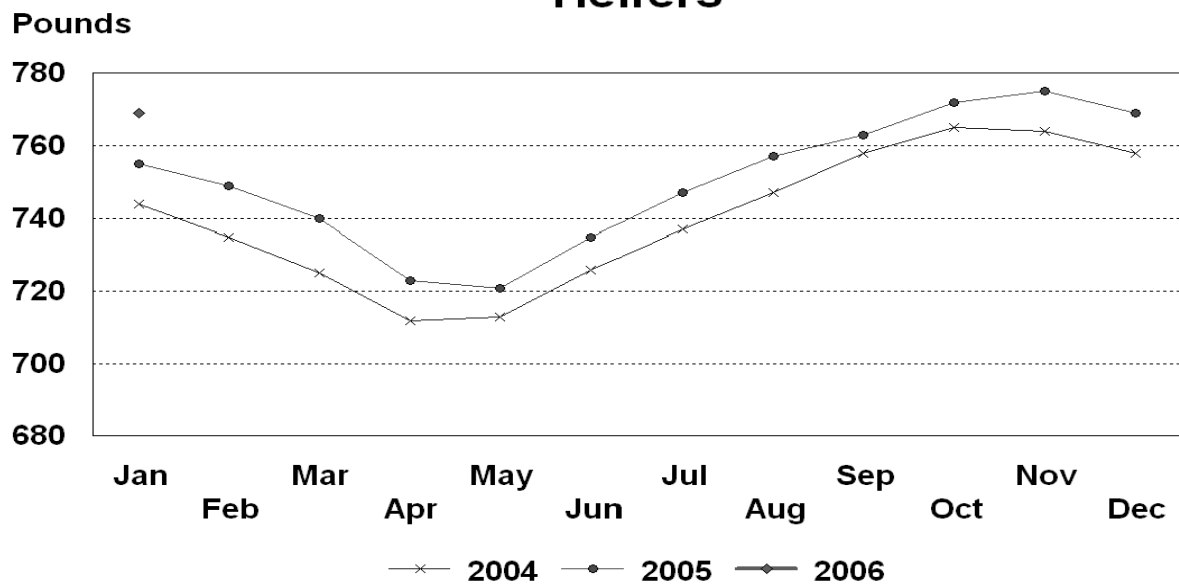
U.S. Monthly Federally Inspected Average Dressed Weight Hogs



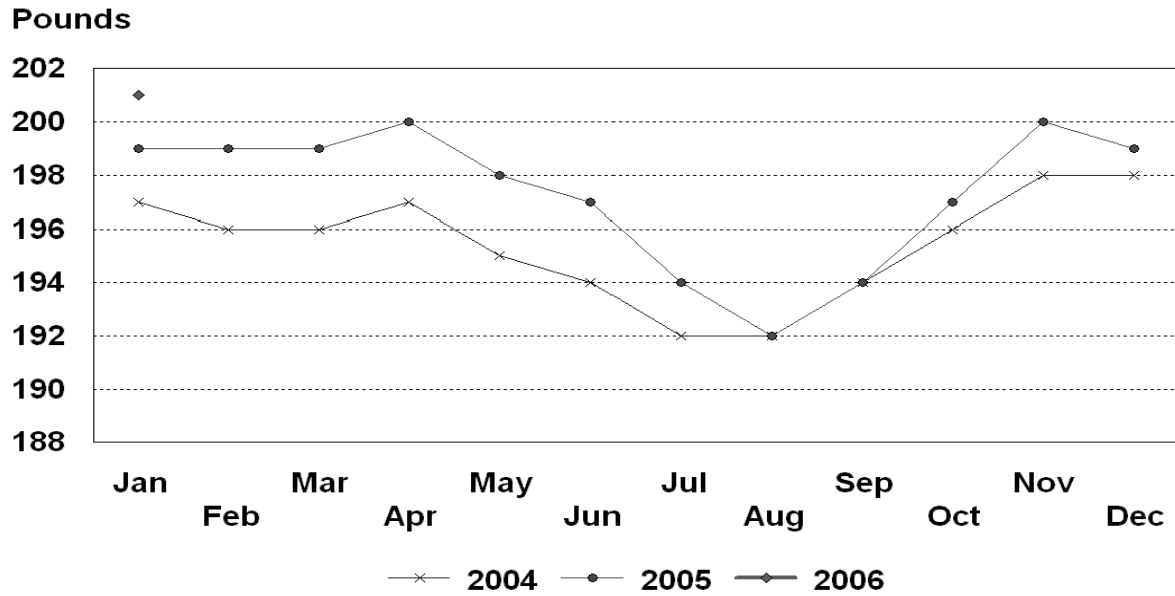
U.S. Monthly Federally Inspected Average Dressed Weight Steers



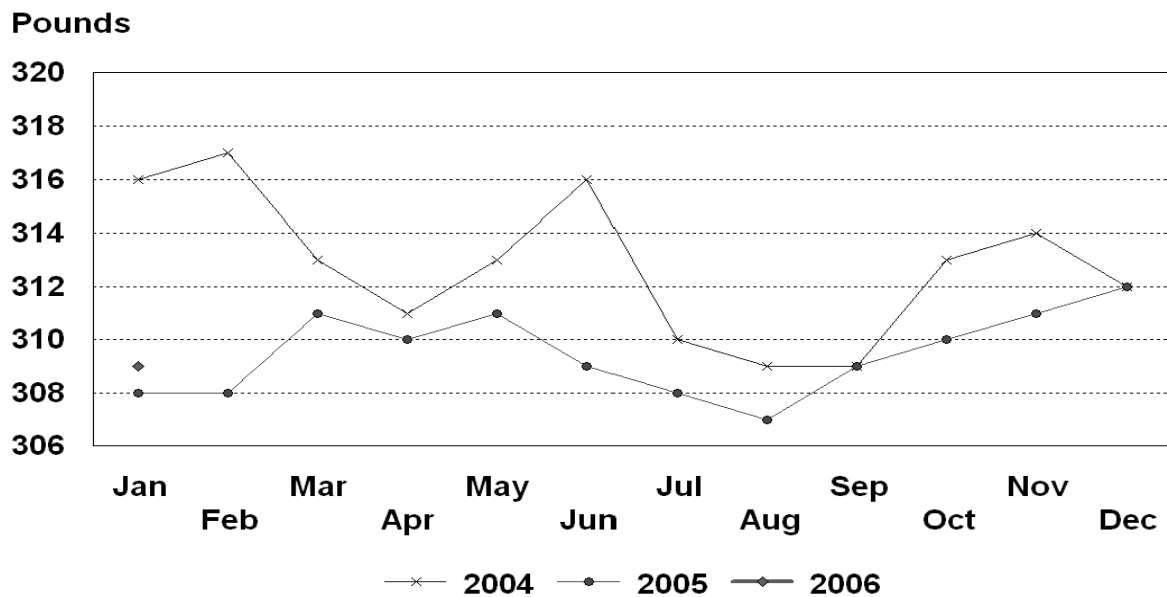
U.S. Monthly Federally Inspected Average Dressed Weight Heifers



U.S. Monthly Federally Inspected Average Dressed Weight Barrows and Gilts



U.S. Monthly Federally Inspected Average Dressed Weight Sows



Livestock Slaughter Estimates

Data Sources: Primary data for the commercial livestock slaughter estimates are obtained from the **Weekly Livestock Slaughter Report** (LS-149) questionnaires completed by inspectors from the Food Safety and Inspection Service (FSIS), USDA, which provide actual counts of animals slaughtered in Federally Inspected (FI) plants. These counts are combined with data from State-administered Non-Federally Inspected (NFI) slaughter plants to derive total commercial slaughter estimates. Over 95 percent of the total U.S. slaughter for any species is under FI. Number of head slaughtered daily under FI are recorded on the LS-149 forms by species and class. Head kill excluding animals condemned and total live and dressed weights are also given.

There are 850 plants in the U.S. operating under Federal Inspection and over 2,200 plants under State inspection. Slaughter from State-inspected Talmedge-Aiken plants is included in FI totals (see Types of Plants, page 20). To prevent duplication in reporting between NFI and FI plants and assure all FI plants are included, certificates prepared by FSIS identifying operating status are constantly monitored.

Revision Policy: Revisions are generally the result of late or corrected data and are less than one-half of 1 percent. Revisions for the previous month and the year-to-date totals are noted in each monthly release by an (*) or a footnote. Final data are published in the annual summary.

Procedures and Reliability: Individual inspectors may be contacted by telephone if the LS-149 is not received by NASS in time for summarization. This assures that all plants slaughtering a large number of head or several species are accounted for each week.

All head kill data are tabulated on a weekly basis approximately two weeks after the kill week. A computer edit compares each plant's data with the historical data for that plant. The edit provides a missing reports listing for follow-up telephone contact and imputes missing weight data. In addition, data are checked for unusual values for species, class, head kill, and pattern of kill, generally based on each plant's past operating profile.

If no form is received by mail or other means, data for plants slaughtering fewer than 50 total head weekly of only one species are imputed. Imputation of live and dressed weights may also be necessary on partially completed forms for any plant. The imputation is also based on the history of each respective plant and represents the recent operating characteristics until final data are tabulated. Imputed head kill for missing plants usually is less than 1 percent of the U.S. head kill totals. Imputation for live and dressed weight data for cattle is usually less than 10 percent and for hogs about 7 percent. The imputation for calves and sheep is more frequent and variable.

Head kill for FI slaughter before condemnation is for the actual days of the survey month, while head kill after condemnation and live and dressed weight data are for full weeks only.

Average live and dressed weights and dressing percentages by State are compared with the previous week as an additional check. Fluctuations are frequently the result of plants permanently or temporarily closing and a shift in the species reported.

FI data are summarized weekly and accumulated to a monthly total for this release, while NFI data are summarized monthly only. These weekly totals are published by USDA's Agricultural Marketing Service (AMS) in **Livestock, Meat, Wool Market News**, Weekly Summary, and Statistics.

Livestock slaughter estimates are based on a census of operating plants and therefore, have no sampling error. However, they may be subject to errors such as omissions, duplications and mistakes in reporting, recording and processing the data. These errors are minimized through rigid quality controls in the edit and summarization process, and a careful review of all reported data for consistency and reasonableness.

No data are published when an individual plant's data could be divulged. If not published, these data are included in US totals. A review of the data is made annually to determine the publishable data.

Types of Plants

There are generally **four types** of slaughtering plants.

- (1) **Federally Inspected (FI) Plants:** Plants that transport meat interstate must employ federal inspectors to assure compliance with USDA standards. Any State whose commercial plants operate entirely under federal inspection may still have custom-exempt establishments for which NFI estimates are made.
- (2) **Talmedge-Aiken (TA) Plants:** Slaughter plants in which USDA is responsible for inspection. However, federal inspection is carried out by State employees. These plants are considered to be federally inspected.
- (3) **Non-Federally Inspected (NFI) Plants:** Plants which sell and transport only intrastate. State inspectors assure compliance with individual State standards for these NFI plants. Mobile slaughtering units are excluded and are considered farm slaughter.
- (4) **Custom-Exempt Plants:** Plants that do not sell meat but operate on a custom basis only are custom-exempt. The animals and meat are not inspected, but the facilities must meet health standards. These are considered NFI plants and head kill is included in NFI totals.

Terms and Definitions

Commercial Production: Includes slaughter and meat production in federally inspected and other plants, but excludes animals slaughtered on farms.

Dressed Weight: The weight of a chilled animal carcass. Beef with kidney knob in; veal with hide off; lamb and mutton with pluck out; pork with leaf fat and kidneys out, jowls on and head off.

Dressing Percent: Usually expressed as a percentage yield of chilled carcass in relation to the weight of the live animal on hoof. For example, a live hog that weighed 200 pounds on hoof and yielded a carcass weighing 140 pounds would have a dressing percentage of 70.

Food and Meat Inspection: Includes examination, checking, or testing of a carcass and/or meat against established government standards and involves checking the facility for cleanliness, health of animals, or parts of animals and quality of the meat produced.

Live Weight: The gross weight of a live animal when received at the slaughter plant.

Plant, Slaughter: An establishment where animals are killed and butchered.

Red Meat: Red meat production is the carcass weight after slaughter including beef, veal, pork, and lamb and mutton. It is derived using the number of head times average dressed weight for FI and NFI separately. FI head kill must be adjusted for condemnations using the factor derived from the FSIS inspection reports.

The FI meat production formula is (FI head kill) X (1 - condemnation factor) X (average dressed weight) = FI red meat production. The condemnation factor is the number of animals condemned as a percentage of the total kill. It has been fairly stable for the last five years; running about 1.90 head per 100 head for calves, .5 per 100 for cattle, .40 per 100 for hogs and .20 per 100 for sheep. The NFI meat production formula is (NFI head kill) X (live weight) X (FI dressing percentage) = NFI red meat production.

Slaughter: Killing and butchering of animals primarily for food.

Slaughter, Farm: Animals slaughtered on farms primarily for home consumption. Excludes custom slaughter for farmers at commercial establishments, but includes mobile slaughtering on farms. These estimates appear only in the annual slaughter release.

Wholesome Meat Act: Legislation that specifies that all meat produced for sale in the U.S. must be inspected. Meat that is transported interstate must be inspected in compliance with Federal (USDA) Standards.

Index

	Page
Commercial Calf Slaughter, Number, Total, and Average Live weight, by State and U.S.	6
Commercial Cattle Slaughter, Number, Total, and Average Live weight, by State and U.S.	5
Commercial Hog Slaughter, Number, Total and Average Live weight, by State and U.S.	7
Commercial Red Meat Production, by State and U.S.	4
Commercial Sheep and Lamb Slaughter, Number, Total, and Average Live weight, by State and U.S.	8
Data Sources, Revision Policy, and Procedures and Reliability	18
Federally Inspected Classification of Number and Average Dressed Weight, by Species and Class and U.S.	9
Federally Inspected Number by Species and Class, by Regions and U.S.	10
Federally Inspected Percent of Total Commercial, by Species, U.S.	11
Livestock Slaughter, Number and Average Weights, by Species and Type of Slaughter, U.S.	3
Red Meat Production, Commercial and FI, by Class, U.S.	2
Terms and Definitions	20
Types of Plants	19

ACCESS TO REPORTS!!

For your convenience, there are several ways to obtain NASS reports, data products, and services:

INTERNET ACCESS

All NASS reports are available free of charge on the worldwide Internet. For access, connect to the Internet and go to the NASS Home Page at: www.nass.usda.gov.

E-MAIL SUBSCRIPTION

All NASS reports are available by subscription free of charge direct to your e-mail address. Starting with the NASS Home Page at www.nass.usda.gov, under the right navigation, *Receive reports by Email*, click on **National** or **State**. Follow the instructions on the screen.

PRINTED REPORTS OR DATA PRODUCTS

CALL OUR TOLL-FREE ORDER DESK: 800-999-6779 (U.S. and Canada)
Other areas, please call 703-605-6220 FAX: 703-605-6900
(Visa, MasterCard, check, or money order acceptable for payment.)

ASSISTANCE

For **assistance** with general agricultural statistics or further information about NASS or its products or services, contact the **Agricultural Statistics Hotline** at **800-727-9540**, 7:30 a.m. to 4:00 p.m. ET, or e-mail: nass@nass.usda.gov.

The U.S. Department of Agriculture (USDA) prohibits discrimination in all its programs and activities on the basis of race, color, national origin, age, disability, and where applicable, sex, marital status, familial status, parental status, religion, sexual orientation, genetic information, political beliefs, reprisal, or because all or part of an individual's income is derived from any public assistance program. (Not all prohibited bases apply to all programs.) Persons with disabilities who require alternative means for communication of program information (Braille, large print, audiotape, etc.) should contact USDA's TARGET Center at (202) 720-2600 (voice and TDD).

To file a complaint of discrimination, write to USDA, Director, Office of Civil Rights, 1400 Independence Avenue, S.W., Washington, D.C. 20250-9410, or call (800) 795-3272 (voice) or (202) 720-6382 (TDD). USDA is an equal opportunity provider and employer.