

---

Released January 25, 2008, by the National Agricultural Statistics Service (NASS), Agricultural Statistics Board, U.S. Department of Agriculture. For information on *Livestock Slaughter* call Benita Hodge at (515) 284-4340, office hours 7:00 a.m. to 4:00 p.m. CT.

## Pork and Total Red Meat Production at Record High for December

**Commercial red meat production** for the United States totaled 4.06 billion pounds in December, up 5 percent from the 3.87 billion pounds produced in December 2006.

**Beef production**, at 2.06 billion pounds, was slightly above the previous year. Cattle slaughter totaled 2.65 million head, up 1 percent from December 2006. The average live weight was up 2 pounds from the previous year, at 1,302 pounds.

**Veal production** totaled 10.4 million pounds, 21 percent below December a year ago. Calf slaughter totaled 61,000 head, down 11 percent from December 2006. The average live weight was down 35 pounds from last year, at 289 pounds.

**Pork production** totaled 1.97 billion pounds, up 10 percent from the previous year. Hog kill totaled 9.69 million head, up 9 percent from December 2006. The average live weight was up 1 pound from the previous year, at 272 pounds.

**Lamb and mutton production**, at 15.4 million pounds, was down 1 percent from December 2006. Sheep slaughter totaled 229,100 head, 1 percent above last year. The average live weight was 135 pounds, down 1 pound from December a year ago.

**January to December 2007 commercial red meat production** was 48.7 billion pounds, up 2 percent from 2006. Accumulated beef production was up 1 percent from last year, veal was down 6 percent, pork was up 4 percent from last year, and lamb and mutton production was down 1 percent.

**December 2006** contained 21 weekdays (including one holiday) and 5 Saturdays.

**December 2007** contained 21 weekdays (including one holiday) and 5 Saturdays.



## Contents

	<b>Page</b>
Red Meat Production, Commercial and FI, by Type, U.S. ....	1
Livestock Slaughter, Number and Average Weights, by Species and Type of Slaughter, U.S. ....	2
Commercial Red Meat Production, by State and U.S. ....	3
Commercial Cattle Slaughter, Number, Total and Average Live Weight, by State and U.S. ....	4
Commercial Calf Slaughter, Number, Total and Average Live Weight, by State and U.S. ....	5
Commercial Hog Slaughter, Number, Total and Average Live Weight, by State and U.S. ....	6
Commercial Sheep and Lamb Slaughter, Number, Total and Average Live Weight, by State and U.S. ....	7
Federally Inspected Classification of Number and Average Dressed Weight, by Species and Class and U.S. ....	8
Federally Inspected Slaughter by Species and Class, by Region and U.S. ....	9
Federally Inspected Percent of Total Commercial, by Species, U.S. ....	11
Reliability Statement.....	18
Types of Plants.....	19
Terms and Definitions.....	20
Information Contacts.....	20



**Commercial Red Meat Production: United States <sup>1</sup>**

Type	Dec 2006	Nov 2007	Dec 2007	Dec 07 % of		Jan - Dec <sup>2</sup>		
				Dec 2006	Nov 2007	2006	2007	07 as % of 06
	<i>Million Pounds</i>	<i>Million Pounds</i>	<i>Million Pounds</i>	<i>Percent</i>	<i>Percent</i>	<i>Million Pounds</i>	<i>Million Pounds</i>	<i>Percent</i>
Beef	2,049.5	2,229.1	2,059.4	100	92	26,151.8	26,415.4	101
Veal	13.1	10.1	10.4	79	104	146.6	137.3	94
Pork	1,796.4	2,045.4	1,972.9	110	96	21,053.8	21,941.6	104
Lamb & Mutton	15.4	16.1	15.4	99	95	185.2	183.0	99
Total Red Meat <sup>3</sup>	3,874.5	4,300.6	4,058.1	105	94	47,537.3	48,677.3	102

<sup>1</sup> Based on packers' dressed weights and excludes farm slaughter.

<sup>2</sup> Accumulated totals and percentages based on unrounded data.

<sup>3</sup> Totals may not equal sum of the parts due to rounding.

**Federally Inspected Red Meat Production: United States <sup>1</sup>**

Type	Dec 2006	Nov 2007	Dec 2007	Dec 07 % of		Jan - Dec <sup>2</sup>		
				Dec 2006	Nov 2007	2006	2007	07 as % of 06
	<i>Million Pounds</i>	<i>Million Pounds</i>	<i>Million Pounds</i>	<i>Percent</i>	<i>Percent</i>	<i>Million Pounds</i>	<i>Million Pounds</i>	<i>Percent</i>
Beef	2,019.4	2,201.5	2,030.8	101	92	25,791.8	26,068.0	101
Veal	12.9	9.7	10.2	79	105	143.8	134.3	93
Pork	1,780.5	2,030.7	1,957.4	110	96	20,877.2	21,768.0	104
Lamb & Mutton	14.7	15.4	14.5	99	94	177.3	174.7	99
Total Red Meat <sup>3</sup>	3,827.5	4,257.4	4,012.9	105	94	46,990.0	48,145.0	102

<sup>1</sup> Based on packers' dressed weights and excludes farm slaughter.

<sup>2</sup> Accumulated totals and percentages based on unrounded data.

<sup>3</sup> Totals may not equal sum of the parts due to rounding.

**Livestock Slaughter: Number and Average Weights, United States <sup>1</sup>**

Species	Unit	Dec 2006	Nov 2007	Dec 2007	Dec 07 % of		Jan - Dec <sup>2</sup>		
					Dec 2006	Nov 2007	2006	2007	07 % of 06
					<i>Percent</i>	<i>Percent</i>			<i>Prct</i>
Cattle No.									
Fed. Insp.	Thou	2,566.3	2,787.3	2,600.3	101	93	33,145.0	33,720.2	102
Other	Thou	46.2	43.9	45.1	98	103	553.3	539.1	97
Comm'l. <sup>3</sup>	Thou	2,612.5	2,831.2	2,645.3	101	93	33,698.3	34,259.3	102
Live Wt/Hd									
Fed. Insp.	Lbs	1,303	1,307	1,305	100	100	1,277	1,275	100
Other	Lbs	1,158	1,114	1,134	98	102	1,141	1,137	100
Comm'l.	Lbs	1,300	1,304	1,302	100	100	1,275	1,273	100
Calves No.									
Fed. Insp.	Thou	67.2	57.5	59.9	89	104	698.7	744.8	107
Other	Thou	1.1	1.4	1.1	100	84	12.6	13.4	106
Comm'l. <sup>3</sup>	Thou	68.4	58.9	61.0	89	104	711.3	758.2	107
Live Wt/Hd									
Fed. Insp.	Lbs	322	287	287	89	100	344	304	88
Other	Lbs	398	430	405	102	94	406	395	97
Comm'l.	Lbs	324	291	289	89	99	345	305	89
Hogs No.									
Fed. Insp.	Thou	8,787.6	9,964.4	9,600.6	109	96	103,688.5	108,138.2	104
Other	Thou	95.2	86.3	90.7	95	105	1,048.1	1,033.8	99
Comm'l. <sup>3</sup>	Thou	8,882.8	10,050.7	9,691.3	109	96	104,736.6	109,172.0	104
Live Wt/Hd									
Fed. Insp.	Lbs	271	273	272	100	100	269	269	100
Other	Lbs	229	236	236	103	100	232	233	100
Comm'l.	Lbs	271	272	272	100	100	269	269	100
Sheep&Lambs No.									
Fed. Insp.	Thou	211.7	222.5	212.2	100	95	2,547.0	2,528.4	99
Other	Thou	15.3	14.2	16.9	111	119	151.4	163.6	108
Comm'l. <sup>3</sup>	Thou	226.9	236.7	229.1	101	97	2,698.5	2,692.0	100
Live Wt/Hd									
Fed. Insp.	Lbs	138	138	137	99	99	138	138	100
Other	Lbs	102	105	101	99	96	105	103	98
Comm'l.	Lbs	136	136	135	99	99	137	136	99
Goats No.									
Fed. Insp.	Thou	60.8	*55.8	61.9	102	111	584.1	639.0	109
Other	Thou	16.3	15.2	17.0	105	112	165.1	189.0	114
Comm'l. <sup>3</sup>	Thou	77.1	*71.0	78.9	102	111	749.3	828.0	111
Live Wt/Hd									
Fed. Insp.	Lbs	63	62	62	98	100	62	61	99
Other	Lbs	67	52	64	96	123	61	60	97
Comm'l.	Lbs	64	60	62	98	104	62	61	98
Bison No.									
Fed. Insp.	Thou	3.8	4.2	3.6	95	85	42.5	50.0	118
Other	Thou	1.5	1.5	1.6	107	104	15.9	17.4	109
Comm'l. <sup>3</sup>	Thou	5.3	5.8	5.2	98	90	58.4	67.3	115

\* Revised.

<sup>1</sup> Excludes slaughter on farms.

<sup>2</sup> Accumulated totals and percentages based on unrounded data.

<sup>3</sup> Totals may not equal sum of the parts due to rounding.

**Commercial Red Meat Production: By State and United States <sup>1</sup>**

State	Dec 2006	Nov 2007	Dec 2007	Dec 07 as % of <sup>2</sup>	
				Dec 2006	Nov 2007
	<i>Million Pounds</i>	<i>Million Pounds</i>	<i>Million Pounds</i>	<i>Percent</i>	<i>Percent</i>
AL	2.1	2.1	2.0	95	93
AK	0.1	0.1			
AZ	32.1	34.1	31.5	98	92
AR	5.6	5.6	5.7	101	101
CA	141.5	140.6	142.9	101	102
CO	123.8	165.5	147.8	119	89
DE-MD	3.3	3.1	2.9	87	95
FL	6.6	8.2	7.2	109	88
GA	13.6	13.5	12.5	92	93
HI	0.8	0.8	0.8	96	98
ID	3.8	18.9	17.9	473	95
IL	228.3	268.1	254.1	111	95
IN	125.8	147.0	142.4	113	97
IA	556.5	625.7	591.8	106	95
KS	492.3	505.6	456.3	93	90
KY	42.8	51.8	50.8	119	98
LA	0.7	0.6	0.5	74	87
MI	39.1	42.1	40.0	102	95
MN	200.3	217.8	208.0	104	95
MS	21.6	1.2	1.2	6	101
MO	112.4	*139.6	139.1	124	100
MT	2.1	1.4	1.5	73	107
NE	558.3	626.3	579.5	104	93
NV	0.1	0.1	0.1	88	131
N ENG <sup>3</sup>	1.2	1.3	1.0	87	79
NJ	5.1	3.7	4.1	80	111
NM	0.6	0.3	0.3	54	98
NY	3.1	2.9	2.7	88	94
NC	192.5	217.0	204.1	106	94
ND	2.5	2.1	2.3	91	110
OH	24.6	24.0	25.2	103	105
OK	81.1	89.4	91.4	113	102
OR	4.1	4.7	4.5	109	96
PA	107.5	108.5	108.3	101	100
SC	20.6	22.1	21.1	102	95
SD	81.0	101.6	95.6	118	94
TN	18.7	22.3	20.0	107	90
TX	357.7	404.7	372.0	104	92
UT	33.2	43.4	38.0	114	87
VA	34.9	43.9	45.7	131	104
WA	68.0	72.5	67.6	99	93
WV	0.7	0.8	0.7	108	91
WI	123.6	115.4	116.3	94	101
WY	0.5	0.4	0.5	94	108
US	3,874.5	4,300.6	4,058.1	105	94

\* Revised.

<sup>1</sup> Includes total beef, veal, pork, lamb, and mutton.

<sup>2</sup> Percentages based on unrounded data.

<sup>3</sup> N ENG includes CT, ME, MA, NH, RI, and VT.

**Commercial Cattle Slaughter: By State and United States,  
December 2006 and 2007 <sup>1</sup>**

State	Number Slaughtered		Total Live Weight		Average Live Weight	
	2006	2007	2006	2007	2006	2007
	<i>1,000 Head</i>	<i>1,000 Head</i>	<i>1,000 Pounds</i>	<i>1,000 Pounds</i>	<i>Pounds</i>	<i>Pounds</i>
AL	0.3	0.3	256	247	848	945
AK	0.1	0.1	69	60	1,082	1,147
AZ		39.4		55,377		1,410
AR	0.9	0.9	846	884	992	1,016
CA	137.4	128.4	181,716	165,401	1,345	1,312
CO	139.2	171.8	185,105	227,502	1,331	1,325
DE-MD	3.6	3.1	4,786	4,082	1,325	1,312
FL						
GA	24.6	22.1	22,510	20,890	919	946
HI	0.8	0.8	819	823	1,041	1,006
ID		23.8		29,359		1,250
IL						
IN	3.2	3.2	3,404	3,396	1,059	1,053
IA						
KS	590.6	553.1	766,704	719,681	1,298	1,301
KY	1.4	1.7	1,345	1,606	948	929
LA	0.7	0.5	627	396	866	770
MI	44.1	45.7	60,350	62,729	1,376	1,383
MN	67.7	64.7	93,359	88,492	1,389	1,378
MS	0.1		62		723	
MO	7.6	7.9	9,180	9,450	1,221	1,202
MT	2.5	1.9	3,052	2,156	1,205	1,163
NE	522.6	545.4	706,762	733,827	1,355	1,348
NV	0.1	0.1	115	100	1,024	1,078
N ENG <sup>2</sup>	1.2	1.1	1,276	1,135	1,027	1,029
NJ	2.3	2.4	2,854	2,899	1,235	1,202
NM	1.1	0.4	1,022	377	979	1,046
NY	2.4	2.0	2,617	2,401	1,124	1,197
NC	16.9	16.6	19,642	19,046	1,170	1,152
ND	1.0	1.1	1,211	1,314	1,179	1,172
OH	8.8	9.2	10,367	10,876	1,195	1,193
OK	2.1	1.9	2,316	2,099	1,119	1,080
OR	2.1	2.5	2,514	2,897	1,215	1,186
PA	72.0	73.4	90,838	92,423	1,269	1,270
SC	11.3	12.2	12,473	12,892	1,106	1,065
SD						
TN	1.4	2.1	1,280	1,795	909	864
TX	469.0	476.8	570,510	595,414	1,220	1,252
UT	40.9	46.7	53,163	60,676	1,302	1,303
VA	0.8	1.2	855	1,246	1,061	1,002
WA	83.5	84.8	111,029	110,447	1,334	1,307
WV	1.1	1.1	1,127	1,177	1,060	1,036
WI	150.4	142.6	201,498	190,406	1,353	1,348
WY	0.6	0.6	731	699	1,157	1,161
US <sup>3</sup>	2,612.5	2,645.3	3,385,204	3,430,848	1,300	1,302

<sup>1</sup> Includes slaughter under Federal inspection and other Commercial slaughter, excludes farm slaughter.

<sup>2</sup> N ENG includes CT, ME, MA, NH, RI, and VT.

<sup>3</sup> States with no data printed are still included in the US total, data not printed to avoid disclosing individual operations. Accumulated totals and percentages based on unrounded data.



**Commercial Calf Slaughter: By State and United States,  
December 2006 and 2007 <sup>1</sup>**

State	Number Slaughtered		Total Live Weight		Average Live Weight	
	2006	2007	2006	2007	2006	2007
	<i>1,000 Head</i>	<i>1,000 Head</i>	<i>1,000 Pounds</i>	<i>1,000 Pounds</i>	<i>Pounds</i>	<i>Pounds</i>
AL						
AK						
AZ						
AR						
CA	10.1	10.7	1,402	1,353	140	128
CO						
DE-MD	0.2	0.2	63	45	344	272
FL						
GA	0.1	0.1	38	27	451	418
HI						
ID						
IL	3.6	3.2	1,574	1,325	439	418
IN	0.5		58		128	
IA						
KS						
KY		0.1		26		515
LA	0.3	0.2	151	93	505	503
MI	2.4	1.6	1,066	641	442	406
MN						
MS						
MO		0.1		26		368
MT						
NE						
NV						
N ENG <sup>2</sup>	0.3	0.2	55	38	214	229
NJ	8.7	5.5	3,888	2,276	446	413
NM						
NY	13.2	14.0	1,892	1,489	148	111
NC	0.1	0.2	49	81	496	522
ND						
OH	0.1	0.1	19	24	354	350
OK	0.1		32		461	
OR						
PA	16.3	13.4	6,178	5,379	380	401
SC						
SD						
TN	0.1	0.1	44	28	414	420
TX	0.8	0.9	465	531	578	579
UT						
VA	0.1	0.1	22	30	352	357
WA						
WV						
WI	10.6		4,786		454	
WY						
US <sup>3</sup>	68.4	61.0	21,944	17,391	324	289

<sup>1</sup> Includes slaughter under Federal inspection and other Commercial slaughter, excludes farm slaughter.

<sup>2</sup> N ENG includes CT, ME, MA, NH, RI, and VT.

<sup>3</sup> States with no data printed are still included in the US total, data not printed to avoid disclosing individual operations. Accumulated totals and percentages based on unrounded data.

**Commercial Hog Slaughter: By State and United States,  
December 2006 and 2007 <sup>1</sup>**

State	Number Slaughtered		Total Live Weight		Average Live Weight	
	2006	2007	2006	2007	2006	2007
	<i>1,000 Head</i>	<i>1,000 Head</i>	<i>1,000 Pounds</i>	<i>1,000 Pounds</i>	<i>Pounds</i>	<i>Pounds</i>
AL	7.3	7.6	3,342	3,335	461	436
AK	0.1	0.1	16	12	166	245
AZ	0.3	0.2	44	29	163	129
AR	17.1	17.6	7,759	7,968	455	454
CA	219.7	252.2	51,805	61,533	236	244
CO	0.7	0.5	178	123	257	249
DE-MD	1.7	1.6	427	420	251	262
FL	13.0	6.8	1,610	1,014	124	150
GA	14.2	12.6	3,041	2,828	215	224
HI	2.2	2.0	480	443	221	220
ID	13.2	12.5	3,385	3,238	256	259
IL	778.4	926.0	217,292	258,524	279	279
IN	615.7	693.2	163,335	184,842	265	267
IA	2,510.5	2,684.4	683,091	731,242	272	273
KS		10.3		4,514		441
KY	209.8	243.3	55,871	65,817	267	271
LA	2.2	2.0	342	318	156	158
MI	10.0	10.9	3,731	4,172	374	386
MN	756.7	813.4	200,285	214,632	265	264
MS						
MO		632.1		177,286		281
MT	1.7	1.3	438	330	256	253
NE	601.4	651.1	162,627	176,308	271	271
NV						
N ENG <sup>2</sup>	2.0	1.6	384	318	192	197
NJ	11.6	11.5	1,047	986	90	86
NM	0.1	0.1	24	19	269	248
NY	2.7	2.6	460	425	172	163
NC	935.5	972.9	242,900	257,756	260	265
ND	11.4	9.2	2,811	2,377	247	257
OH	93.9	95.0	25,774	26,492	275	280
OK	378.7	427.6	105,539	119,311	279	279
OR	15.7	15.0	3,638	3,786	232	254
PA	269.7	273.7	67,346	69,429	250	254
SC						
SD	363.5	441.8	96,330	114,252	265	259
TN	55.5	59.9	26,722	28,092	482	470
TX	34.5	41.6	8,887	11,271	258	271
UT	5.3	5.6	1,089	968	207	173
VA	175.7	226.3	45,564	59,629	260	264
WA	2.0	2.4	408	456	207	192
WV	0.6	0.7	140	175	253	263
WI	42.4	39.8	18,724	17,284	450	443
WY	0.4	0.3	97	77	276	260
US <sup>3</sup>	8,882.8	9,691.3	2,402,254	2,633,077	271	272

<sup>1</sup> Includes slaughter under Federal inspection and other Commercial slaughter, excludes farm slaughter.

<sup>2</sup> N ENG includes CT, ME, MA, NH, RI, and VT.

<sup>3</sup> States with no data printed are still included in the US total, data not printed to avoid disclosing individual operations. Accumulated totals and percentages based on unrounded data.

**Commercial Sheep and Lamb Slaughter: By State and United States,  
December 2006 and 2007 <sup>1</sup>**

State	Number Slaughtered		Total Live Weight		Average Live Weight	
	2006	2007	2006	2007	2006	2007
	<i>1,000 Head</i>	<i>1,000 Head</i>	<i>1,000 Pounds</i>	<i>1,000 Pounds</i>	<i>Pounds</i>	<i>Pounds</i>
AL						
AK						
AZ	0.1		10		94	
AR						
CA						
CO	85.3	82.5	13,154	12,574	154	153
DE-MD	3.2	3.0	327	307	101	101
FL	0.3	0.1	18	6	68	78
GA	0.4	0.5	37	55	98	100
HI						
ID	0.3	0.3	41	35	135	135
IL	14.3		1,813		127	
IN	3.0	2.9	331	311	109	106
IA	34.9	32.9	5,262	4,982	151	151
KS	0.3	0.2	32	20	117	105
KY	1.0	1.0	115	125	117	124
LA	0.2	0.3	10	17	69	68
MI	16.0	17.2	2,126	2,227	133	130
MN	0.4	0.3	42	37	119	121
MS						
MO	0.5	0.4	68	55	129	123
MT	0.4	0.4	48	40	108	113
NE	0.1		9		125	
NV		0.1		8		121
N ENG <sup>2</sup>	2.9	2.1	241	189	82	92
NJ	12.7	12.3	1,021	1,053	80	85
NM	0.8	1.0	98	147	128	147
NY	5.0	5.0	397	395	79	78
NC	0.6	1.0	50	74	79	75
ND	0.1		7		124	
OH	1.3	1.2	136	122	107	105
OK	0.1	0.1	5	7	101	102
OR	1.9	2.1	252	274	135	134
PA	4.7	4.5	444	435	95	97
SC						
SD	1.6	0.9	211	118	129	130
TN	1.5	1.4	99	107	68	74
TX	1.1	2.9	107	269	97	93
UT	2.7	2.7	369	364	136	135
VA	0.9	1.6	86	151	101	96
WA	0.4	0.9	44	123	104	141
WV						
WI	1.1	1.2	149	169	136	137
WY	0.1	0.1	17	18	130	137
US <sup>3</sup>	226.9	229.1	30,762	30,826	136	135

<sup>1</sup> Includes slaughter under Federal inspection and other Commercial slaughter, excludes farm slaughter.

<sup>2</sup> N ENG includes CT, ME, MA, NH, RI, and VT.

<sup>3</sup> States with no data printed are still included in the US total, data not printed to avoid disclosing individual operations. Accumulated totals and percentages based on unrounded data.

**Classification of Livestock Slaughtered Under Federal Inspection:  
United States**

Item	Dec 2006	Nov 2007	Dec 2007	Jan - Dec <sup>1</sup>		Dec 2006	Nov 2007	Dec 2007	Jan - Dec <sup>1</sup>	
				2006	2007				2006	2007
	<i>1,000 Head</i>	<i>1,000 Head</i>	<i>1,000 Head</i>	<i>1,000 Head</i>	<i>1,000 Head</i>	<i>Percent of Total</i>	<i>Percent of Total</i>	<i>Percent of Total</i>	<i>Percent of Total</i>	<i>Percent of Total</i>
Class <sup>2</sup>										
Cattle										
Steers	1,280	1,340	1,279	17,478	17,286	49.9	48.1	49.2	52.7	51.3
Heifers	770	873	798	9,819	10,206	30.0	31.3	30.7	29.6	30.3
All Cows	477	527	483	5,336	5,675	18.6	18.9	18.6	16.1	16.8
Dairy Cows	212	217	205	2,354	2,497	8.2	7.8	7.9	7.1	7.4
Other Cows	265	310	278	2,983	3,178	10.3	11.1	10.7	9.0	9.4
Bulls	39	47	41	511	554	1.5	1.7	1.6	1.5	1.6
Total <sup>1</sup>	2,566	2,787	2,600	33,145	33,720	100.0	100.0	100.0	100.0	100.0
Calves & Vealers	67	58	60	699	745	100.0	100.0	100.0	100.0	100.0
Hogs										
Barrow & Gilts	8,484	9,634	9,301	100,113	104,352	96.5	96.7	96.9	96.6	96.5
Sows	266	290	264	3,227	3,309	3.0	2.9	2.8	3.1	3.1
Boars	37	41	36	348	477	0.4	0.4	0.4	0.3	0.4
Total <sup>1</sup>	8,788	9,964	9,601	103,688	108,138	100.0	100.0	100.0	100.0	100.0
Sheep										
Mature Sheep	11	10	11	118	116	5.0	4.3	5.2	4.6	4.6
Lambs & Yrlngs	201	213	201	2,429	2,413	95.0	95.7	94.8	95.4	95.4
Total <sup>1</sup>	212	*223	212	2,547	2,528	100.0	100.0	100.0	100.0	100.0
Average Dressed Weight										
	<i>Pounds</i>	<i>Pounds</i>	<i>Pounds</i>	<i>Pounds</i>	<i>Pounds</i>					
Cattle	790	793	784	781	776					
Steers <sup>3</sup>	849	858	844	833	830					
Heifers <sup>3</sup>	790	801	784	767	764					
All Cows <sup>3</sup>	619	603	613	622	617					
Bulls <sup>3</sup>	897	865	871	914	893					
Calves & Vealers	193	171	172	207	182					
Hogs	203	204	204	202	202					
Barrow Gilts <sup>4</sup>	199	201	201	198	198					
Sows <sup>4</sup>	309	307	304	309	308					
Boars <sup>4</sup>	215	214	214	227	213					
Sheep	69	69	69	70	69					
Mature Sheep <sup>5</sup>	64	66	67	67	67					
Lamb & Yrlngs <sup>5</sup>	70	69	69	70	69					

\* Revised.

<sup>1</sup> Total and percentages based on unrounded data.

<sup>2</sup> Species totals and classification reported by meat inspectors, Inspection Operations, FSIS.

<sup>3</sup> Included in cattle average dressed weight.

<sup>4</sup> Included in hog average dressed weight.

<sup>5</sup> Included in sheep average dressed weight.

**Federally Inspected Slaughter: By Region and United States,  
December 2007<sup>1</sup>**

Standard Federal Regions	Cattle							Calves
	Total <sup>2</sup>	Steers	Heifers	Cows			Bulls	Total
				All	Dairy	Other		
	<i>1,000 Head</i>	<i>1,000 Head</i>	<i>1,000 Head</i>	<i>1,000 Head</i>	<i>1,000 Head</i>	<i>1,000 Head</i>	<i>1,000 Head</i>	<i>1,000 Head</i>
1	0.8	0.5	0.1					0.2
2	4.3	1.6	0.3	2.0	1.6	0.4	0.5	19.5
3	75.9	33.6	6.1	34.4	27.1	7.3	1.9	13.7
4	64.5	1.1	0.4	55.1	10.4	44.6	7.9	
5	320.7	133.0	42.2	138.6	71.1	67.5	6.9	14.2
6	475.0	241.8	150.0	73.2	12.7	60.5	10.0	0.7
7	1,149.3	623.6	454.8	64.1	1.0	63.0	6.7	
8	232.1	110.2	102.8					
9	167.7	85.3	10.1	69.9	62.4	7.5	2.5	10.4
10	110.0	47.8	30.9	28.1	13.1	15.0	3.2	
US <sup>2</sup>	2,600.3	1,278.5	797.6	482.9	204.7	278.3	41.2	59.9
	Hogs				Sheep			
	Total <sup>2</sup>	Barrows & Gilts	Sows	Boars	Total <sup>2</sup>	Mature Sheep	Lambs & Yearlings	
	<i>1,000 Head</i>	<i>1,000 Head</i>	<i>1,000 Head</i>	<i>1,000 Head</i>	<i>1,000 Head</i>	<i>1,000 Head</i>	<i>1,000 Head</i>	<i>1,000 Head</i>
1	1.3	1.2						
2	13.9	13.7	0.1	0.1	15.0	2.1		13.0
3	500.4	487.6	1.7	11.2	9.0	0.3		8.7
4	1,362.0	1,281.5	78.7	1.8	4.0	1.1		2.8
5	2,547.0	2,438.4	105.5	3.1	33.7	3.5		30.2
6	479.1	450.5	26.6	2.0	1.3	0.7		0.6
7	3,970.8	3,902.3			33.4	0.3		33.1
8	453.8	453.6	0.2		85.3	1.4		83.9
9	243.4	243.3						
10	28.8	28.7	0.1		2.4	0.2		2.1
US <sup>2</sup>	9,600.6	9,300.8	264.2	35.5	212.2	10.9		201.3

<sup>1</sup> States included in regions are as follows: 1- CT, ME, NH, VT, MA, & RI; 2- NY & NJ; 3- DE-MD, PA, WV, & VA; 4- AL, FL, GA, KY, MS, NC, SC, & TN; 5- IL, IN, MI, MN, OH, & WI; 6- AR, LA, NM, OK, & TX; 7- IA, KS, MO, & NE; 8- CO, MT, ND, SD, UT, & WY; 9- AZ, CA, HI & NV; 10- AK, ID, OR, & WA.

<sup>2</sup> Regions with no data printed are still included in the US and Region total, data not printed to avoid disclosing individual operations. Totals may not add due to rounding.

**Federally Inspected Slaughter: By Region and United States,  
January - December 2007<sup>1</sup>**

Standard Federal Regions	Cattle							Calves
	Total <sup>2</sup>	Steers	Heifers	Cows			Bulls	Total
				All	Dairy	Other		
	<i>1,000 Head</i>	<i>1,000 Head</i>	<i>1,000 Head</i>	<i>1,000 Head</i>	<i>1,000 Head</i>	<i>1,000 Head</i>	<i>1,000 Head</i>	<i>1,000 Head</i>
1	11.0	5.5	1.7					1.7
2	55.3	20.3	3.4	27.7	24.2	3.5	3.9	237.2
3	979.2	445.3	78.3	424.9	335.8	89.2	30.7	174.2
4	837.3	13.2	4.3	714.8	134.9	580.0	105.0	
5	3,935.5	1,742.1	468.3	1,631.3	870.3	760.9	93.9	181.9
6	6,097.7	3,155.9	2,004.6	815.7	173.3	642.4	121.5	14.8
7	15,424.8	8,702.0	5,896.4	727.1	14.7	712.4	99.3	0.4
8	2,938.6	1,486.6	1,248.5					
9	2,104.5	1,063.0	128.7	870.3	748.1	122.3	42.6	119.6
10	1,336.1	652.2	371.4	280.2	135.1	145.1	32.3	
US <sup>2</sup>	33,720.2	17,286.1	10,205.6	5,674.6	2,496.9	3,177.8	553.9	744.8
	Hogs				Sheep			
	Total <sup>2</sup>	Barrows & Gilts	Sows	Boars	Total <sup>2</sup>	Mature Sheep	Lambs & Yearlings	
	<i>1,000 Head</i>	<i>1,000 Head</i>	<i>1,000 Head</i>	<i>1,000 Head</i>	<i>1,000 Head</i>	<i>1,000 Head</i>	<i>1,000 Head</i>	
1	14.1	13.8	0.2	0.1				
2	138.5	135.5	1.7	1.3	154.0	16.5	137.5	
3	5,356.2	5,188.2	14.2	153.8	99.8	4.6	95.2	
4	16,080.0	15,179.0	882.3	18.8	36.7	11.6	25.0	
5	28,708.7	27,260.6	1,405.3	42.9	368.1	39.1	329.0	
6	5,483.1	5,205.7	270.0	7.4	12.5	6.3	6.2	
7	44,424.7	43,459.8			399.5	3.9	395.5	
8	4,967.4	4,946.0	21.2	0.1	1,085.6	20.5	1,065.1	
9	2,592.2	2,591.1						
10	373.4	372.2	1.0	0.2	29.0	2.2	26.8	
US <sup>2</sup>	108,138.2	104,351.7	3,309.2	477.3	2,528.4	115.6	2,412.8	

<sup>1</sup> States included in regions are as follows: 1- CT, ME, NH, VT, MA, & RI; 2- NY & NJ; 3- DE-MD, PA, WV, & VA; 4- AL, FL, GA, KY, MS, NC, SC, & TN; 5- IL, IN, MI, MN, OH, & WI; 6- AR, LA, NM, OK, & TX; 7- IA, KS, MO, & NE; 8- CO, MT, ND, SD, UT, & WY; 9- AZ, CA, HI & NV; 10- AK, ID, OR, & WA.

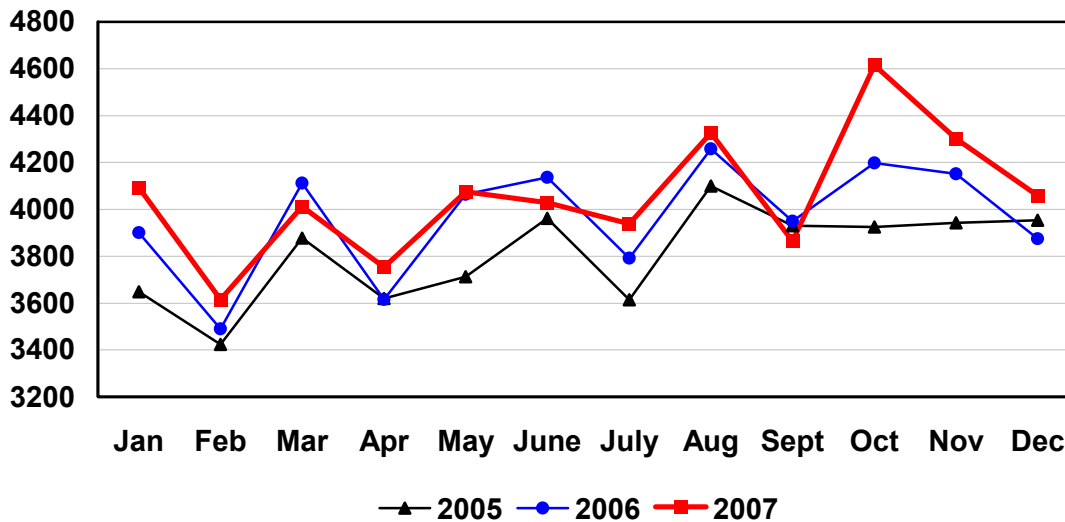
<sup>2</sup> Regions with no data printed are still included in the US and Region total, data not printed to avoid disclosing individual operations. Totals may not add due to rounding.

**Federally Inspected Slaughter: Percent of Total Commercial Slaughter by Species, United States**

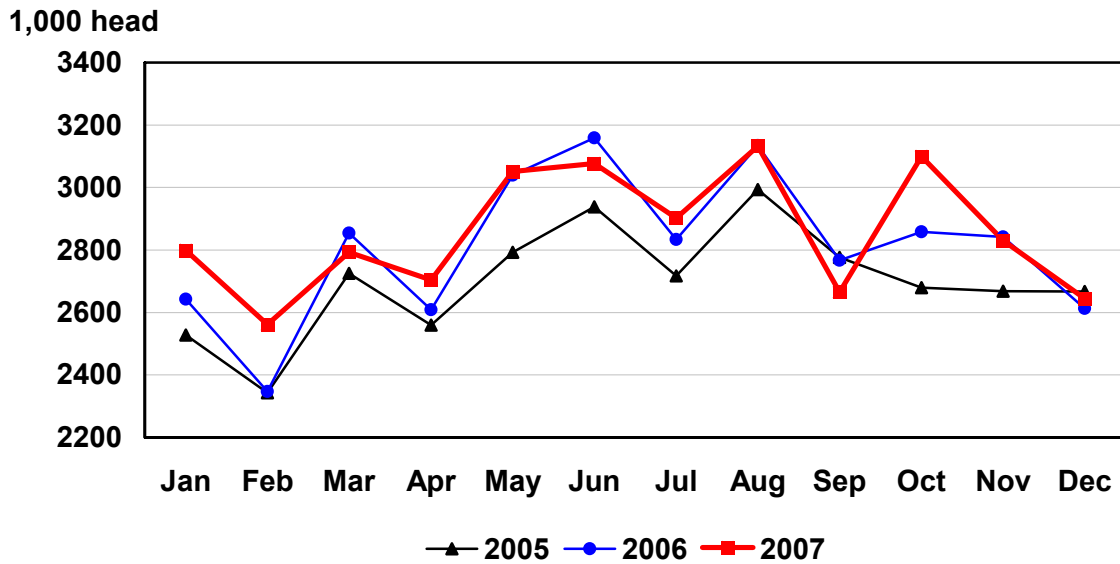
Species	Dec 2006	Nov 2007	Dec 2007	Jan - Dec	
				2006	2007
	<i>Percent</i>	<i>Percent</i>	<i>Percent</i>	<i>Percent</i>	<i>Percent</i>
Cattle	98.2	98.4	98.3	98.4	98.4
Calves	98.3	97.7	98.1	98.2	98.2
Hogs	98.9	99.1	99.1	99.0	99.1
Sheep	93.3	94.0	92.6	94.4	93.9

## U.S. Monthly Commercial Red Meat Production

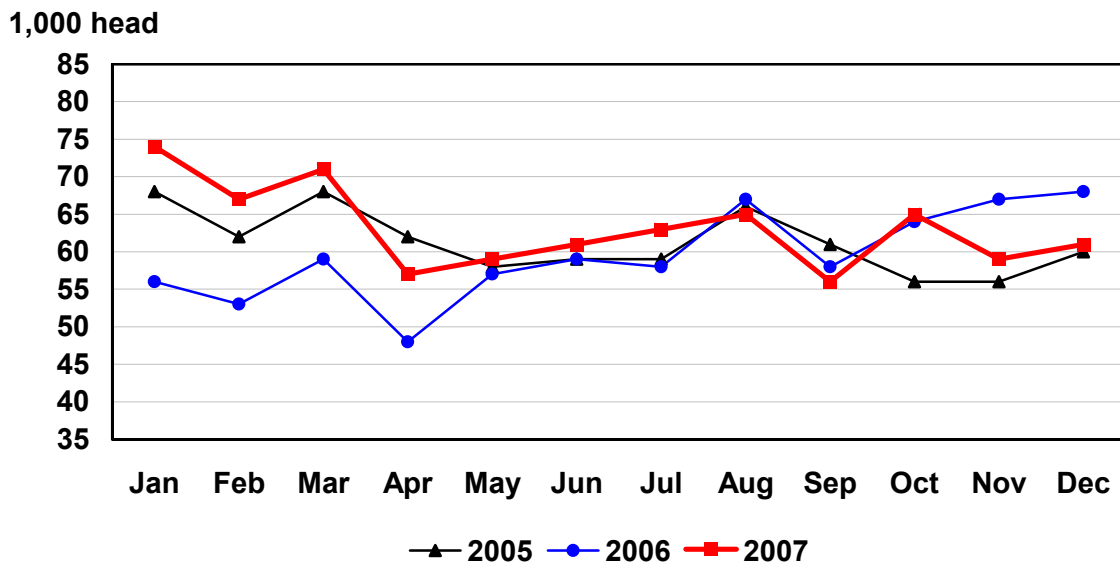
Million Pounds



# U.S. Monthly Commercial Slaughter Cattle

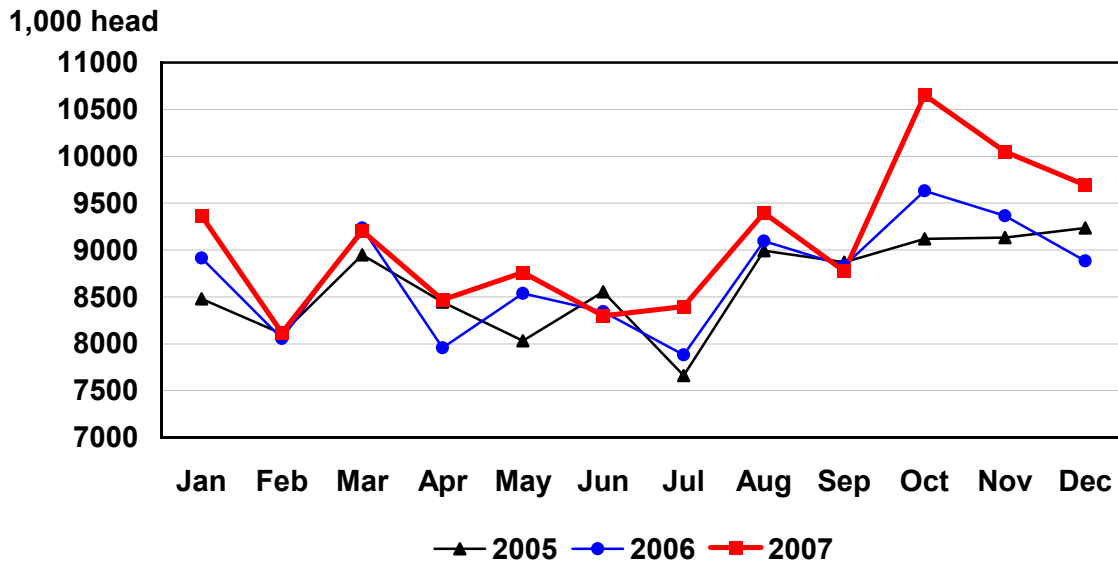


# U.S. Monthly Commercial Slaughter Calves

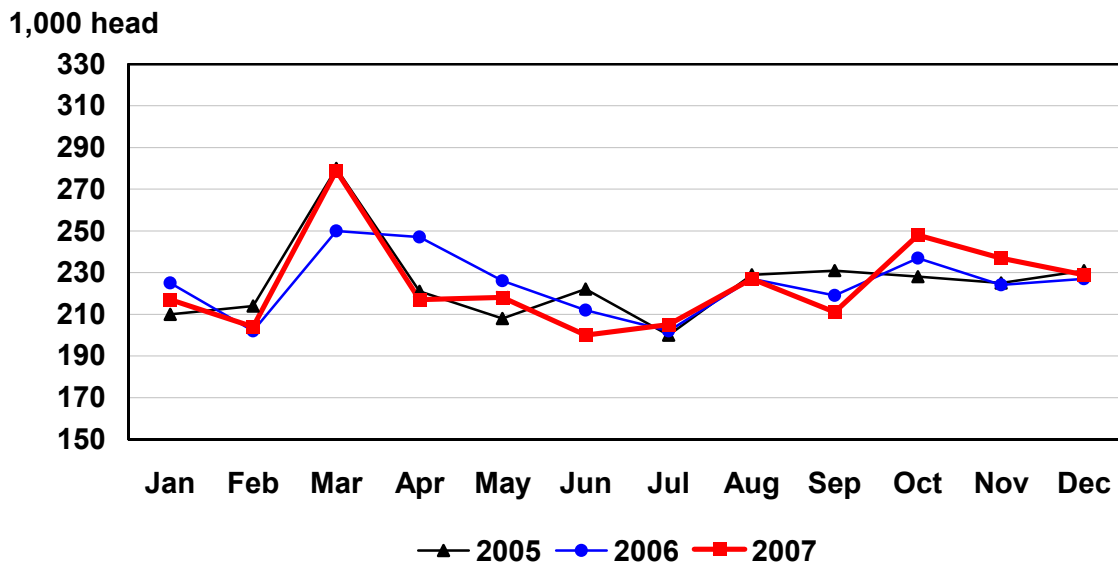




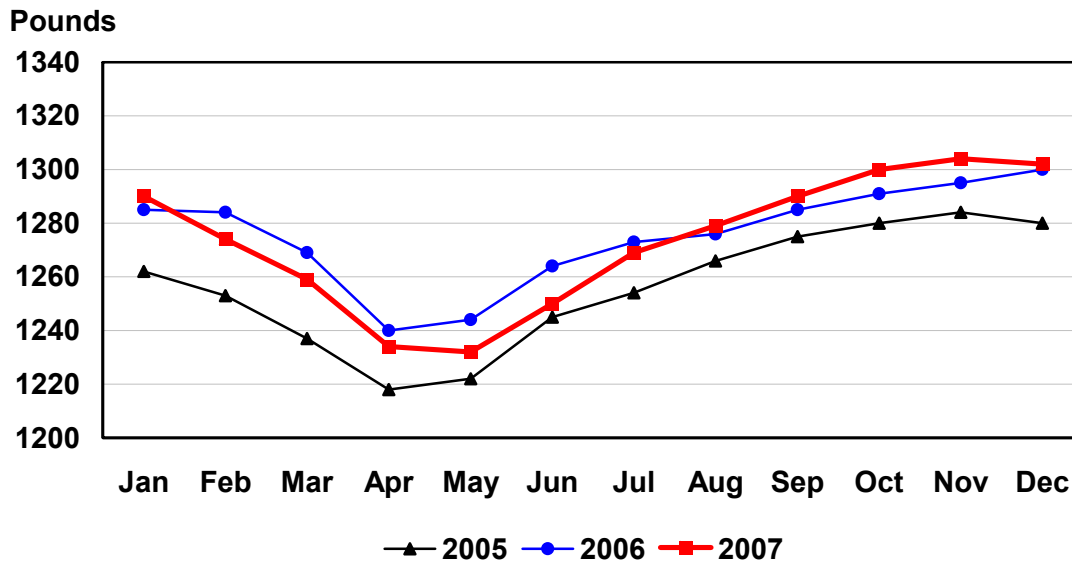
# U.S. Monthly Commercial Slaughter Hogs



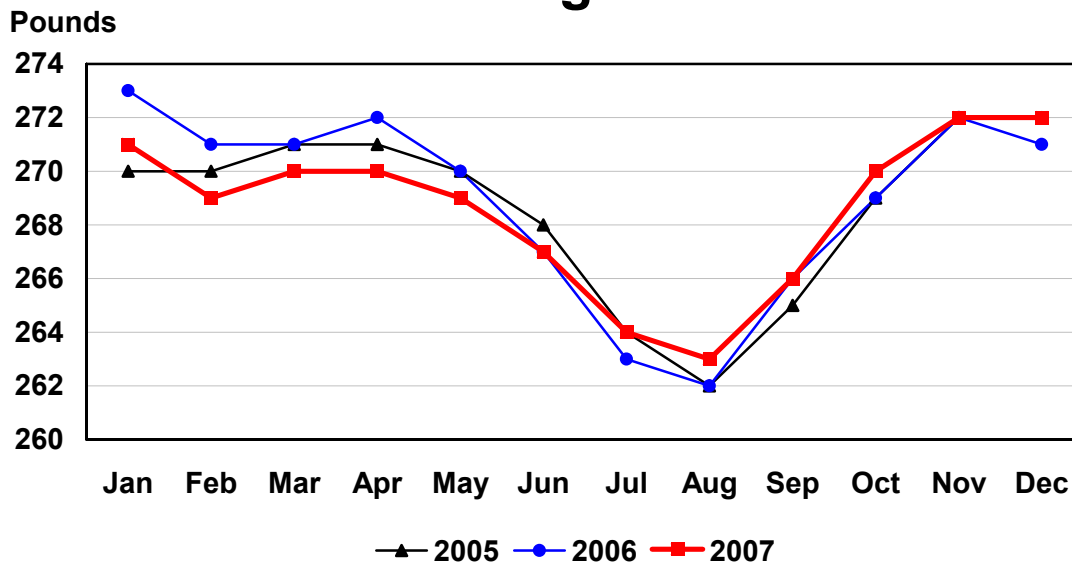
# U.S. Monthly Commercial Slaughter Sheep



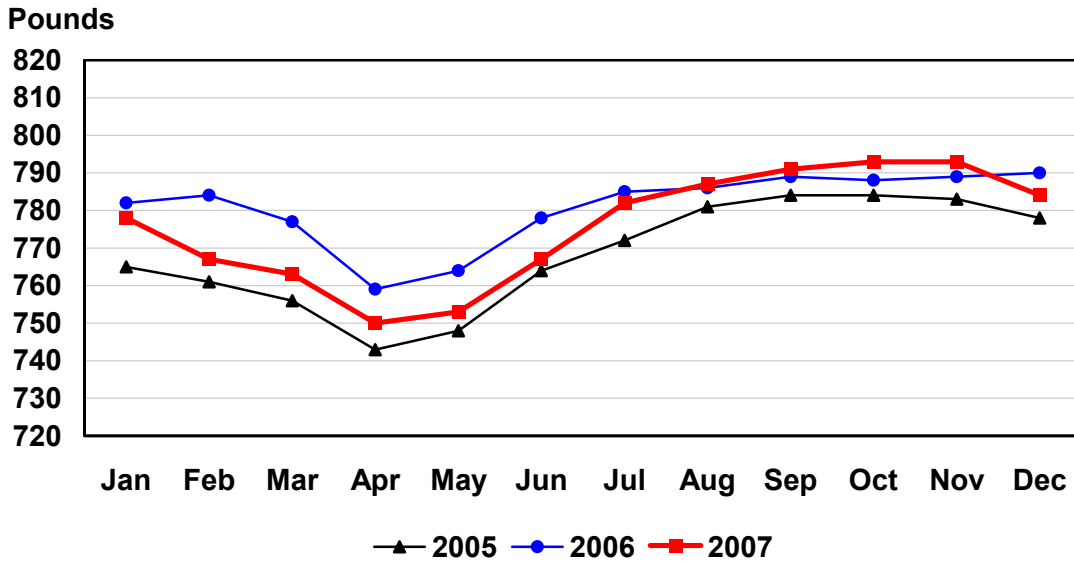
# U.S. Monthly Commercial Slaughter Average Live Weight Cattle



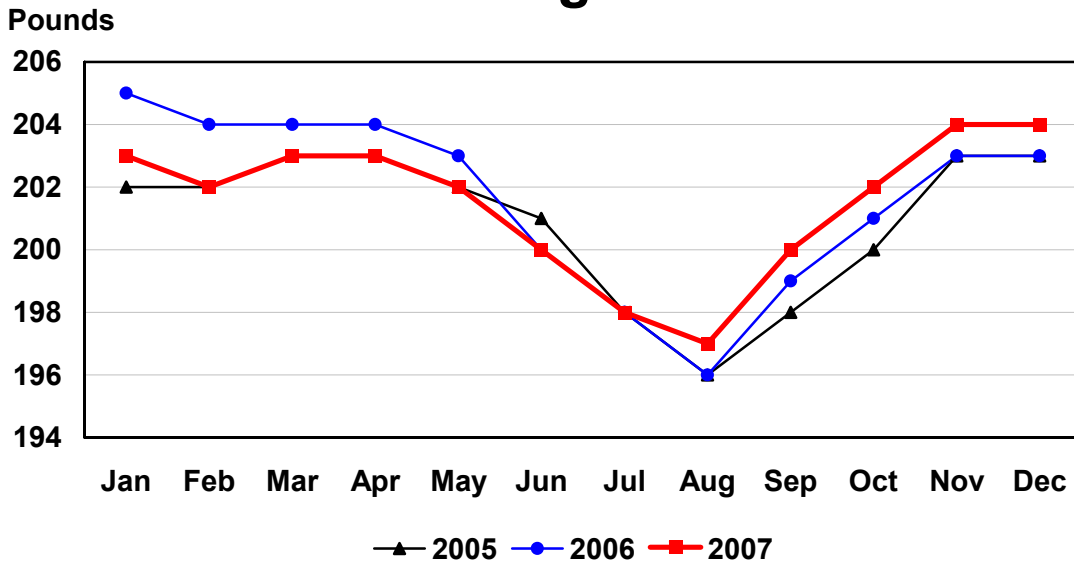
# U.S. Monthly Commercial Slaughter Average Live Weight Hogs



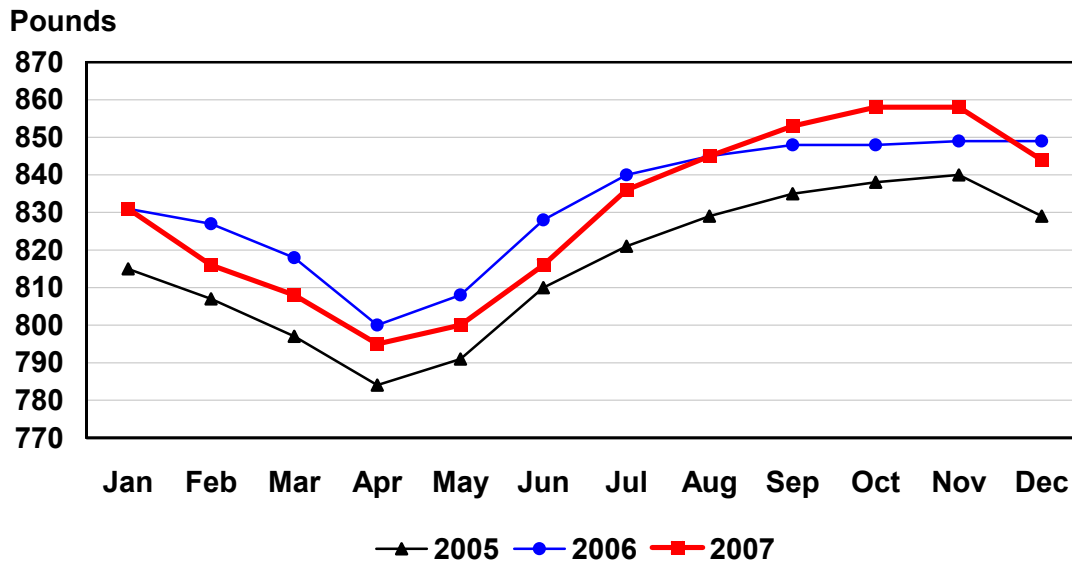
# U.S. Monthly Federally Inspected Average Dressed Weight Cattle



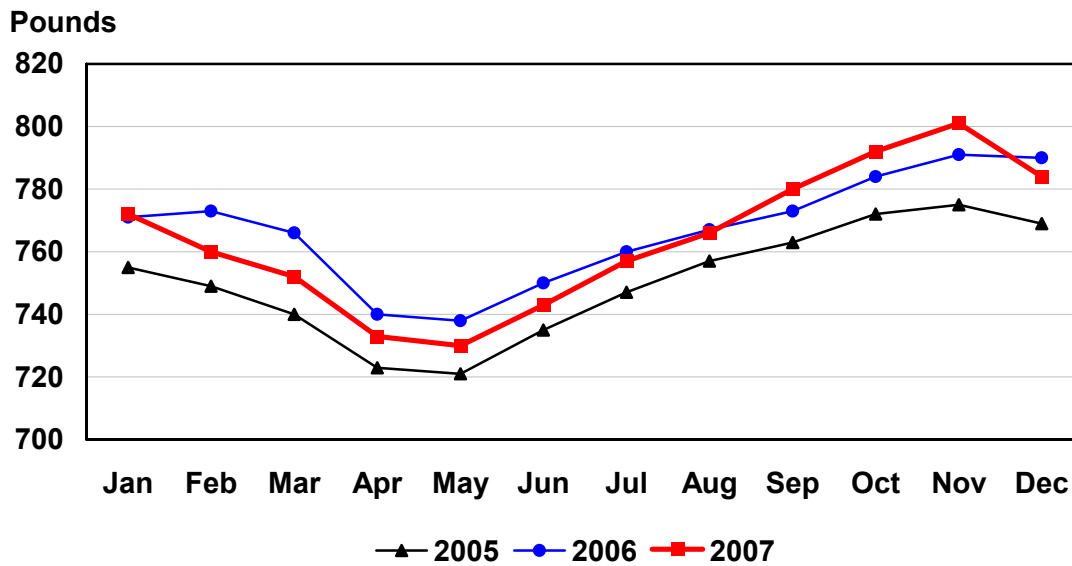
# U.S. Monthly Federally Inspected Average Dressed Weight Hogs



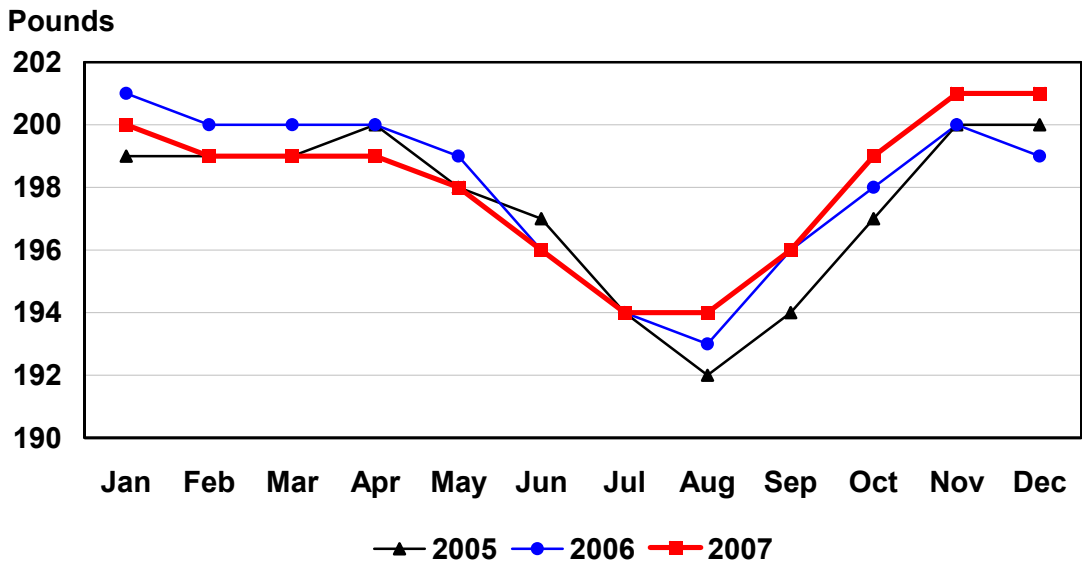
# U.S. Monthly Federally Inspected Average Dressed Weight Steers



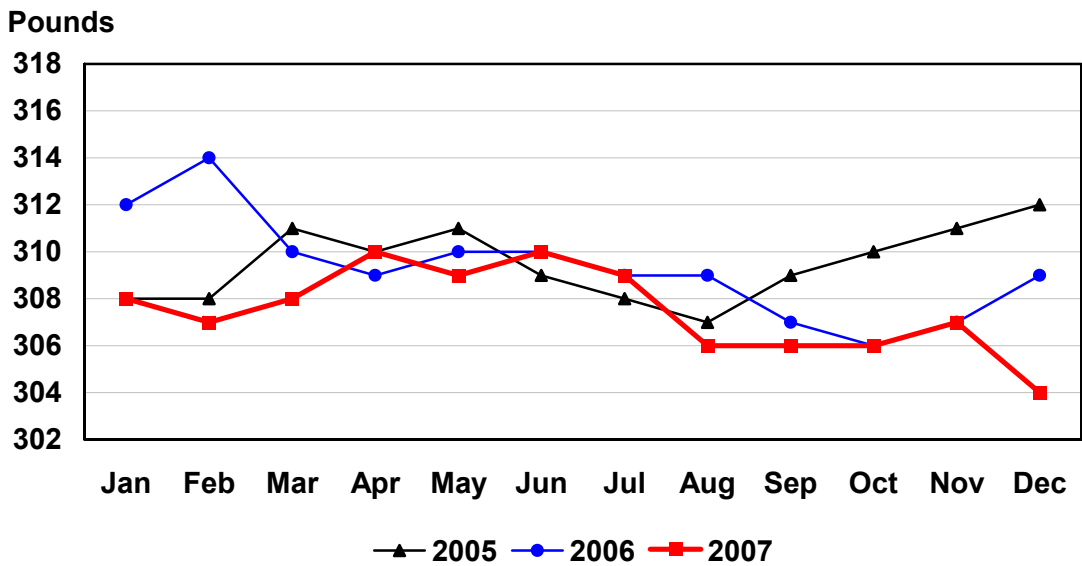
# U.S. Monthly Federally Inspected Average Dressed Weight Heifers



## U.S. Monthly Federally Inspected Average Dressed Weight Barrows and Gilts



## U.S. Monthly Federally Inspected Average Dressed Weight Sows



## Reliability of Livestock Slaughter Estimates

**Data Sources:** Primary data for the commercial livestock slaughter estimates are obtained from electronic reports completed by inspectors from the Food Safety and Inspection Service (FSIS), USDA, which provide daily counts of animals slaughtered in Federally Inspected (FI) plants, in addition to total live and dressed weights. These counts are combined with data from State-administered Non-Federally Inspected (NFI) slaughter plants to derive total commercial slaughter estimates. More than 95 percent of the total U.S. slaughter for any species is under Federal Inspection.

There are nearly 800 livestock slaughter plants in the U.S. operating under Federal Inspection and over 2,000 Non-Federally Inspected (State-inspected or custom-exempt) slaughter plants. Slaughter from State-inspected Talmedge-Aiken plants is included in FI totals (see Types of Plants, page 20). To prevent duplication in reporting between FI and NFI plants and assure all FI plants are included, certificates prepared by FSIS identifying operating status are constantly monitored

**Revision Policy:** Number of head slaughtered, live weights, and dressed weights are subject to revision the following month after the monthly release. Annual totals are published in the slaughter summary each March which includes any revisions made to current and previous year's published data. Revisions are generally the result of late reports received from slaughter plants and are usually less than one-half of one percent. No revisions will be made to the previous year's data after the publication of the annual summary in March.

**Procedures and Reliability:** The livestock slaughter data is obtained electronically on a daily basis and summarized approximately two weeks after the week of slaughter. An edit compares each plant's data with the historical data for that plant. Data are checked for unusual values for head kill, patterns of kill, average weights, and dressing percent, based on each plant's past operating profile. In addition, the edit provides a listing of missing reports for follow-up contact with FSIS. Average live and dressed weights and dressing percentages by State are compared with the previous weeks as an additional check. Fluctuations are frequently the result of plants permanently or temporarily closing and a shift in the species reported.

The FSIS District Veterinary Medical Specialists (DVMS) are contacted by e-mail or telephone for missing or potentially erroneous slaughter data. This assures that plants slaughtering a large number of head or several species are accounted for each week. Any corrections FSIS makes to the slaughter data are included in the summary.

Imputation may be necessary for incomplete reports. The imputation of live and dressed weights is based on the current week reported data of plants of similar size and location. Imputation for live and dressed weight data for cattle and hogs is less than 10 percent and 7 percent, respectively. The imputation for calves and sheep is more frequent and variable. If no data is received electronically or by other means, for plants slaughtering fewer than 50 total head weekly of only one species, data are imputed. The imputation of head for any plant is based on the historical data for that particular plant. The imputation of head slaughtered is rare but when necessary, the imputed head kill for missing plants usually is less than 1 percent of the U.S. head kill totals.

FI data are summarized weekly and accumulated to a monthly total for this release. These weekly totals are published by USDA's Agricultural Marketing Service (AMS) in **Livestock, Meat, Wool Market News**, Weekly Summary, and Statistics and are also available on the NASS website. NFI data are summarized monthly only.

Livestock slaughter estimates are based on a census of operating plants and therefore, have no sampling error. However, they may be subject to errors such as omissions, duplications and mistakes in reporting, recording and processing the data. These errors are minimized through rigid quality controls in the edit and summarization process, and a careful review of all reported data for consistency and reasonableness.

No data are published when an individual plant's data could be divulged. If not published, these data are still included in US and region totals. A review of the data is made annually to determine the publishable data.

### **Types of Livestock Slaughter Plants**

There are generally **four types** of slaughtering plants.

- (1) **Federally Inspected (FI) Plants:** Plants that transport meat interstate must employ federal inspectors to assure compliance with USDA standards. Any State whose commercial plants operate entirely under federal inspection may still have custom-exempt establishments for which NFI estimates are made.
- (2) **Talmedge-Aiken (TA) Plants:** Slaughter plants in which USDA is responsible for inspection. However, federal inspection is carried out by State employees. These plants are considered to be federally inspected.
- (3) **Non-Federally Inspected (NFI) Plants:** Plants which sell and transport only intrastate. State inspectors assure compliance with individual State standards for these NFI plants. Mobile slaughtering units are excluded and are considered farm slaughter.
- (4) **Custom-Exempt Plants:** Plants that do not sell meat but operate on a custom basis only are custom-exempt. The animals and meat are not inspected, but the facilities must meet health standards. These are considered NFI plants and head kill is included in NFI totals.

## Terms and Definitions Used for Livestock Slaughter Estimates

**Commercial Production:** Includes slaughter and meat production in federally inspected and other plants, but excludes animals slaughtered on farms.

**Dressed Weight:** The weight of a chilled animal carcass. Beef with kidney knob in; veal with hide off; lamb and mutton with pluck out; pork with leaf fat and kidneys out, jowls on and head off.

**Dressing Percent:** Usually expressed as a percentage yield of chilled carcass in relation to the weight of the live animal on hoof. For example, a live hog that weighed 200 pounds on hoof and yielded a carcass weighing 140 pounds would have a dressing percentage of 70.

**Food and Meat Inspection:** Includes examination, checking, or testing of a carcass and/or meat against established government standards and involves checking the facility for cleanliness, health of animals, or parts of animals and quality of the meat produced.

**Live Weight:** The gross weight of a live animal when received at the slaughter plant.

**Plant, Slaughter:** An establishment where animals are killed and butchered.

**Red Meat:** Red meat production is the carcass weight after slaughter excluding condemnation and is comprised of beef, veal, pork, and lamb and mutton. The FI red meat production is equal to the total carcass weight after slaughter. The NFI meat production formula is (NFI head kill) X (live weight) X (FI dressing percentage) = NFI red meat production.

**Slaughter:** Killing and butchering of animals primarily for food.

**Slaughter, Farm:** Animals slaughtered on farms primarily for home consumption. Excludes custom slaughter for farmers at commercial establishments, but includes mobile slaughtering on farms. These estimates appear only in the annual slaughter release.

**Wholesome Meat Act:** Legislation that specifies that all meat produced for sale in the U.S. must be inspected. Meat that is transported interstate must be inspected in compliance with Federal (USDA) Standards.

## Information Contacts

Listed below are the commodity specialists in the Livestock Branch of the National Agricultural Statistics Service to contact for additional information.

Dan Kerestes, Chief, Livestock Branch.....	(202) 720-3570
Shawn Clark, Head, Livestock Section.....	(202) 720-3570
Bruce Boess – Hogs and Pigs.....	(202) 720-3106
Jim Collom – Dairy Products.....	(202) 690-3236
Joe Gaynor – Dairy Products Prices.....	(202) 690-2168
Jason Hardegee – Milk Production and Milk Cows.....	(202) 720-3278
Benita Hodge – Livestock Slaughter.....	(515) 284-4340
Scott Hollis – Sheep & Lambs, Goats.....	(202) 720-4751
Mike Miller – Cattle, Cattle on Feed.....	(202) 720-3040



## ACCESS TO REPORTS!!

---

For your convenience, there are several ways to obtain NASS reports, data products, and services:

### INTERNET ACCESS

All NASS reports are available free of charge on the worldwide Internet. For access, connect to the Internet and go to the NASS Home Page at: [www.nass.usda.gov](http://www.nass.usda.gov).

### E-MAIL SUBSCRIPTION

All NASS reports are available by subscription free of charge direct to your e-mail address. Starting with the NASS Home Page at [www.nass.usda.gov](http://www.nass.usda.gov), under the right navigation, *Receive reports by Email*, click on **National** or **State**. Follow the instructions on the screen.

-----

### PRINTED REPORTS OR DATA PRODUCTS

**CALL OUR TOLL-FREE ORDER DESK: 800-999-6779 (U.S. and Canada)**  
**Other areas, please call 703-605-6220      FAX: 703-605-6900**  
**(Visa, MasterCard, check, or money order acceptable for payment.)**

-----

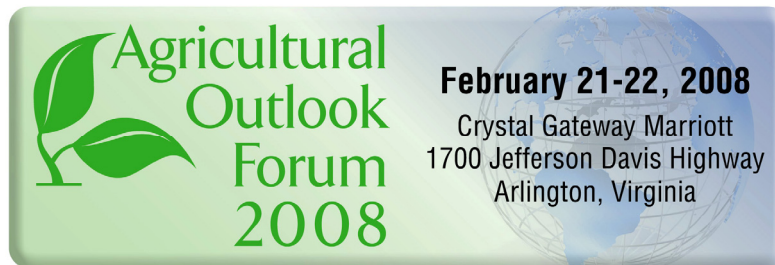
### ASSISTANCE

For **assistance** with general agricultural statistics or further information about NASS or its products or services, contact the **Agricultural Statistics Hotline** at **800-727-9540**, 7:30 a.m. to 4:00 p.m. ET, or e-mail: [nass@nass.usda.gov](mailto:nass@nass.usda.gov).

The U.S. Department of Agriculture (USDA) prohibits discrimination in all its programs and activities on the basis of race, color, national origin, age, disability, and where applicable, sex, marital status, familial status, parental status, religion, sexual orientation, genetic information, political beliefs, reprisal, or because all or part of an individual's income is derived from any public assistance program. (Not all prohibited bases apply to all programs.) Persons with disabilities who require alternative means for communication of program information (Braille, large print, audiotape, etc.) should contact USDA's TARGET Center at (202) 720-2600 (voice and TDD).

To file a complaint of discrimination, write to USDA, Director, Office of Civil Rights, 1400 Independence Avenue, S.W., Washington, D.C. 20250-9410, or call (800) 795-3272 (voice) or (202) 720-6382 (TDD). USDA is an equal opportunity provider and employer.

# Energizing Rural America in the Global Marketplace



Please join us for USDA's 84<sup>th</sup> annual Forum as the Secretary of Agriculture and government, farm, and industry leaders discuss the future of American agriculture.

- ❖ More than 100 experts are scheduled to speak.
- ❖ Topical sessions include luncheon and dinner speakers.
- ❖ Extensive networking opportunities.

Forecasts • Trends • Policies

**Register at: [www.usda.gov/oce/forum](http://www.usda.gov/oce/forum)** for \$300