



# Livestock Slaughter

---

Released February 22, 2008, by the National Agricultural Statistics Service (NASS), Agricultural Statistics Board, U.S. Department of Agriculture. For information on *Livestock Slaughter* call Benita Hodge at (515) 284-4340, office hours 7:00 a.m. to 4:00 p.m. CT.

## Pork and Total Red Meat Production Set Record Highs for January

**Commercial red meat production** for the United States totaled 4.42 billion pounds in January, up 8 percent from the 4.09 billion pounds produced in January 2007.

**Beef production**, at 2.23 billion pounds, was 3 percent above the previous year. Cattle slaughter totaled 2.90 million head, up 4 percent from January 2007. The average live weight was up 1 pound from the previous year, at 1,291 pounds.

**Veal production** totaled 11.3 million pounds, 21 percent below January a year ago. Calf slaughter totaled 71,500 head, 4 percent below January 2007. The average live weight was down 55 pounds from last year, at 269 pounds.

**Pork production** totaled 2.16 billion pounds, 14 percent above the previous year. Hog kill totaled 10.6 million head, 13 percent above January 2007. The average live weight was up 2 pounds from the previous year, at 273 pounds.

**Lamb and mutton production**, at 14.8 million pounds, was 2 percent below January 2007. Sheep slaughter totaled 213,400 head, 2 percent below last year. The average live weight was 139 pounds, unchanged from January a year ago.

**January 2007** contained 23 weekdays (including two holidays) and 4 Saturdays.

**January 2008** contained 23 weekdays (including two holidays) and 4 Saturdays.



## Contents

	<b>Page</b>
Red Meat Production, Commercial and FI, by Class, U.S.....	1
Livestock Slaughter, Number and Average Weights, by Species and Type of Slaughter, U.S.....	2
Commercial Red Meat Production, by State and U.S.....	3
Commercial Cattle Slaughter, Number, Total and Average Live Weight, by State and U.S.....	4
Commercial Calf Slaughter, Number, Total and Average Live Weight, by State and U.S.....	5
Commercial Hog Slaughter, Number, Total and Average Live Weight, by State and U.S.....	6
Commercial Sheep and Lamb Slaughter, Number, Total and Average Live Weight, by State and U.S. ....	7
Federally Inspected Classification of Number and Average Dressed Weight, by Species and Class and U.S.....	8
Federally Inspected Slaughter by Species and Class, by Region and U.S. ....	9
Federally Inspected Percent of Total Commercial, by Species, U.S. ....	10
Reliability Statement.....	17
Types of Plants.....	18
Terms and Definitions.....	19
Information Contacts.....	19



**Commercial Red Meat Production: United States <sup>1</sup>**

Type	Jan 2007	Dec 2007	Jan 2008	Jan 08 % of		Jan <sup>2</sup>		
				Jan 2007	Dec 2007	2007	2008	08 as % of 07
	<i>Million Pounds</i>	<i>Million Pounds</i>	<i>Million Pounds</i>	<i>Percent</i>	<i>Percent</i>	<i>Million Pounds</i>	<i>Million Pounds</i>	<i>Percent</i>
Beef	2,164.6	*2,061.4	2,232.0	103	108	2,164.6	2,232.0	103
Veal	14.3	10.4	11.3	79	108	14.3	11.3	79
Pork	1,898.4	*1,972.7	2,157.8	114	109	1,898.4	2,157.8	114
Lamb & Mutton	15.1	15.4	14.8	98	96	15.1	14.8	98
Total Red Meat <sup>3</sup>	4,092.5	*4,059.9	4,415.9	108	109	4,092.5	4,415.9	108

\* Revised.

<sup>1</sup> Based on packers' dressed weights and excludes farm slaughter.

<sup>2</sup> Accumulated totals and percentages based on unrounded data.

<sup>3</sup> Totals may not equal sum of the parts due to rounding.

**Federally Inspected Red Meat Production: United States <sup>1</sup>**

Type	Jan 2007	Dec 2007	Jan 2008	Jan 08 % of		Jan <sup>2</sup>		
				Jan 2007	Dec 2007	2007	2008	08 as % of 07
	<i>Million Pounds</i>	<i>Million Pounds</i>	<i>Million Pounds</i>	<i>Percent</i>	<i>Percent</i>	<i>Million Pounds</i>	<i>Million Pounds</i>	<i>Percent</i>
Beef	2,131.7	*2,032.7	2,199.4	103	108	2,131.7	2,199.4	103
Veal	14.0	10.2	11.0	78	108	14.0	11.0	78
Pork	1,884.3	1,957.4	2,143.4	114	110	1,884.3	2,143.4	114
Lamb & Mutton	14.5	14.5	14.2	98	98	14.5	14.2	98
Total Red Meat <sup>3</sup>	4,044.6	*4,014.8	4,368.0	108	109	4,044.6	4,368.0	108

\* Revised.

<sup>1</sup> Based on packers' dressed weights and excludes farm slaughter.

<sup>2</sup> Accumulated totals and percentages based on unrounded data.

<sup>3</sup> Totals may not equal sum of the parts due to rounding.

**Livestock Slaughter: Number and Average Weights, United States <sup>1</sup>**

Species	Unit	Jan 2007	Dec 2007	Jan 2008	Jan 08 % of		Jan <sup>2</sup>		
					Jan 2007	Dec 2007	2007	2008	08 % of 07
					<i>Percent</i>	<i>Percent</i>			<i>Prct</i>
Cattle No.									
Fed. Insp.	Thou	2,748.0	*2,602.5	2,847.6	104	109	2,748.0	2,847.6	104
Other	Thou	50.7	*45.4	51.0	101	112	50.7	51.0	101
Comm'l. <sup>3</sup>	Thou	2,798.7	*2,647.9	2,898.6	104	109	2,798.7	2,898.6	104
Live Wt/Hd									
Fed. Insp.	Lbs	1,292	1,305	1,294	100	99	1,292	1,294	100
Other	Lbs	1,147	*1,132	1,141	99	101	1,147	1,141	99
Comm'l.	Lbs	1,290	1,302	1,291	100	99	1,290	1,291	100
Calves No.									
Fed. Insp.	Thou	73.3	59.9	70.4	96	118	73.3	70.4	96
Other	Thou	1.0	1.1	1.1	106	95	1.0	1.1	106
Comm'l. <sup>3</sup>	Thou	74.3	61.0	71.5	96	117	74.3	71.5	96
Live Wt/Hd									
Fed. Insp.	Lbs	323	287	267	83	93	323	267	83
Other	Lbs	388	*386	416	107	108	388	416	107
Comm'l.	Lbs	324	*288	269	83	93	324	269	83
Hogs No.									
Fed. Insp.	Thou	9,281.4	9,600.6	10,474.0	113	109	9,281.4	10,474.0	113
Other	Thou	84.0	*89.3	83.1	99	93	84.0	83.1	99
Comm'l. <sup>3</sup>	Thou	9,365.5	*9,689.9	10,557.1	113	109	9,365.5	10,557.1	113
Live Wt/Hd									
Fed. Insp.	Lbs	271	272	273	101	100	271	273	101
Other	Lbs	232	236	239	103	102	232	239	103
Comm'l.	Lbs	271	272	273	101	100	271	273	101
Sheep&Lambs No.									
Fed. Insp.	Thou	204.2	212.2	201.6	99	95	204.2	201.6	99
Other	Thou	12.5	*16.8	11.8	94	70	12.5	11.8	94
Comm'l. <sup>3</sup>	Thou	216.7	*229.0	213.4	98	93	216.7	213.4	98
Live Wt/Hd									
Fed. Insp.	Lbs	141	137	141	100	103	141	141	100
Other	Lbs	107	*104	102	95	98	107	102	95
Comm'l.	Lbs	139	135	139	100	103	139	139	100
Goats No.									
Fed. Insp.	Thou	45.8	61.9	49.1	107	79	45.8	49.1	107
Other	Thou	13.1	*17.2	12.4	94	72	13.1	12.4	94
Comm'l. <sup>3</sup>	Thou	58.9	*79.1	61.5	104	78	58.9	61.5	104
Live Wt/Hd									
Fed. Insp.	Lbs	63	62	63	100	101	63	63	100
Other	Lbs	70	*61	50	71	81	70	50	71
Comm'l.	Lbs	64	62	60	93	97	64	60	93
Bison No.									
Fed. Insp.	Thou	4.1	3.6	4.8	117	132	4.1	4.8	117
Other	Thou	1.8	*1.5	1.8	100	115	1.8	1.8	100
Comm'l. <sup>3</sup>	Thou	5.9	5.2	6.5	112	127	5.9	6.5	112

\* Revised.

<sup>1</sup> Excludes slaughter on farms.

<sup>2</sup> Accumulated totals and percentages based on unrounded data.

<sup>3</sup> Totals may not equal sum of the parts due to rounding.

**Commercial Red Meat Production: By State and United States <sup>1</sup>**

State	Jan 2007	Dec 2007	Jan 2008	Jan 08 as % of <sup>2</sup>	
				Jan 2007	Dec 2007
	<i>Million Pounds</i>	<i>Million Pounds</i>	<i>Million Pounds</i>	<i>Percent</i>	<i>Percent</i>
AL	2.8	2.0	2.3	82	118
AK	0.1				
AZ	33.5	31.5	34.0	102	108
AR	4.4	5.7	5.5	124	96
CA	148.4	142.9	148.4	100	104
CO	147.7	147.8	175.5	119	119
DE-MD	3.8	2.9	3.4	89	115
FL	6.7	7.2	8.2	122	114
GA	15.8	12.5	14.2	90	113
HI	0.8	0.8	0.9	111	117
ID	4.2	*17.8	16.3	386	91
IL	239.4	254.1	274.4	115	108
IN	138.5	142.4	158.6	114	111
IA	584.0	591.8	655.1	112	111
KS	502.2	456.3	484.1	96	106
KY	46.2	50.8	55.0	119	108
LA	0.7	0.5	0.6	84	107
MI	41.7	40.0	42.5	102	106
MN	222.8	208.0	232.4	104	112
MS	26.4	1.2	1.4	5	115
MO	122.5	139.1	157.9	129	114
MT	1.4	*1.6	1.4	100	85
NE	604.2	*581.5	618.1	102	106
NV	0.1	0.1	0.1	103	132
N ENG <sup>3</sup>	1.1	1.0	1.1	102	113
NJ	5.0	4.1	4.2	84	101
NM	0.6	0.3	0.4	69	131
NY	3.2	2.7	3.0	92	111
NC	205.6	204.1	221.7	108	109
ND	3.0	2.3	2.7	89	116
OH	25.7	25.2	26.4	103	105
OK	87.2	91.4	98.5	113	108
OR	4.5	*4.6	5.1	114	110
PA	110.0	108.3	113.6	103	105
SC	21.4	21.1	23.5	110	111
SD	81.9	95.6	105.8	129	111
TN	18.1	20.0	20.7	114	103
TX	354.6	372.0	403.8	114	109
UT	34.5	38.0	42.5	123	112
VA	37.0	45.7	48.9	132	107
WA	69.6	67.6	76.3	110	113
WV	0.6	0.7	0.7	107	90
WI	130.0	*116.1	126.5	97	109
WY	0.6	0.5	0.6	88	115
US	4,092.5	*4,059.9	4,415.9	108	109

\* Revised.

<sup>1</sup> Includes total beef, veal, pork, lamb, and mutton.

<sup>2</sup> Percentages based on unrounded data.

<sup>3</sup> N ENG includes CT, ME, MA, NH, RI, and VT.

**Commercial Cattle Slaughter: By State and United States,  
January 2007 and 2008<sup>1</sup>**

State	Number Slaughtered		Total Live Weight		Average Live Weight	
	2007	2008	2007	2008	2007	2008
	<i>1,000 Head</i>	<i>1,000 Head</i>	<i>1,000 Pounds</i>	<i>1,000 Pounds</i>	<i>Pounds</i>	<i>Pounds</i>
AL	0.3	0.4	254	356	862	857
AK	0.1		79		1,117	
AZ	41.6	43.1	57,628	60,173	1,388	1,403
AR	1.1	1.0	1,135	1,067	1,025	1,049
CA	144.1	142.2	191,955	182,388	1,357	1,308
CO	171.8	208.3	225,480	272,887	1,313	1,311
DE-MD	4.1	3.7	5,483	4,847	1,345	1,314
FL						
GA	29.8		27,196		920	
HI	0.9	1.0	970	1,198	1,079	1,142
ID	2.5	20.9	2,551	25,320	1,084	1,233
IL						
IN	4.0	4.0	4,156	4,237	1,050	1,054
IA						
KS	624.7	596.6	788,842	758,815	1,263	1,272
KY	1.7	2.0	1,554	1,925	941	942
LA	0.8	0.6	653	463	845	770
MI	46.7	49.0	64,620	67,668	1,391	1,393
MN	75.9	71.9	105,725	99,949	1,402	1,401
MS	0.1	0.1	110	66	814	739
MO	7.4	8.9	9,063	10,551	1,235	1,198
MT	1.7	1.7	1,993	2,022	1,201	1,202
NE	581.1	583.0	779,533	779,707	1,344	1,339
NV	0.1	0.1	128	135	982	1,106
N ENG <sup>2</sup>	1.2	1.2	1,300	1,342	1,043	1,081
NJ	2.6	2.4	3,081	2,960	1,214	1,239
NM	1.0	0.5	971	495	1,016	1,067
NY	2.5	2.4	2,792	2,867	1,155	1,193
NC	18.7	19.7	22,143	22,780	1,186	1,158
ND	1.3	1.1	1,492	1,425	1,184	1,266
OH	10.6	10.2	12,347	12,006	1,181	1,191
OK	2.3	2.4	2,503	2,691	1,110	1,127
OR	2.3	3.1	2,641	3,627	1,193	1,205
PA	80.6	84.5	101,707	107,431	1,272	1,282
SC	13.0	13.8	14,881	15,104	1,151	1,105
SD						
TN	1.7	2.6	1,538	2,276	898	888
TX	472.4	526.7	569,240	651,874	1,208	1,241
UT	43.4	53.0	55,629	67,955	1,285	1,286
VA	0.9	1.2	932	1,261	1,068	1,046
WA	85.6	96.1	113,426	124,108	1,330	1,297
WV	0.9	1.0	933	1,056	1,052	1,021
WI	154.7	150.6	210,330	202,959	1,374	1,361
WY	0.8	0.7	906	819	1,165	1,144
US <sup>3</sup>	2,798.7	2,898.6	3,596,488	3,728,434	1,290	1,291

<sup>1</sup> Includes slaughter under Federal inspection and other Commercial slaughter, excludes farm slaughter.

<sup>2</sup> N ENG includes CT, ME, MA, NH, RI, and VT.

<sup>3</sup> States with no data printed are still included in the US total, data not printed to avoid disclosing individual operations. Accumulated totals and percentages based on unrounded data.



**Commercial Calf Slaughter: By State and United States,  
January 2007 and 2008 <sup>1</sup>**

State	Number Slaughtered		Total Live Weight		Average Live Weight	
	2007	2008	2007	2008	2007	2008
	<i>1,000 Head</i>	<i>1,000 Head</i>	<i>1,000 Pounds</i>	<i>1,000 Pounds</i>	<i>Pounds</i>	<i>Pounds</i>
AL						
AK						
AZ						
AR						
CA	11.8	15.0	1,663	1,755	142	118
CO						
DE-MD	0.2	0.2	66	50	381	241
FL						
GA	0.1	0.1	33	33	446	433
HI						
ID						
IL	4.0	2.6	1,731	1,092	434	415
IN						
IA						
KS						
KY	0.1		30		475	
LA	0.3	0.3	140	136	518	514
MI	2.9	1.8	1,239	658	431	377
MN						
MS						
MO		0.1		24		379
MT						
NE						
NV						
N ENG <sup>2</sup>	0.2	0.3	46	84	271	303
NJ	8.9	6.1	3,927	2,510	444	410
NM	1.0		76		80	
NY	14.2	17.8	2,168	1,763	158	103
NC	0.1	0.1	47	65	515	518
ND						
OH	0.1	0.1	25	19	350	348
OK						
OR						
PA	15.6	14.0	6,039	5,454	387	389
SC						
SD						
TN	0.1	0.1	47	34	454	423
TX	1.4	1.5	883	920	622	600
UT						
VA	0.1		21		292	
WA						
WV						
WI						
WY						
US <sup>3</sup>	74.3	71.5	23,857	18,985	324	269

<sup>1</sup> Includes slaughter under Federal inspection and other Commercial slaughter, excludes farm slaughter.

<sup>2</sup> N ENG includes CT, ME, MA, NH, RI, and VT.

<sup>3</sup> States with no data printed are still included in the US total, data not printed to avoid disclosing individual operations. Accumulated totals and percentages based on unrounded data.

**Commercial Hog Slaughter: By State and United States,  
January 2007 and 2008<sup>1</sup>**

State	Number Slaughtered		Total Live Weight		Average Live Weight	
	2007	2008	2007	2008	2007	2008
	<i>1,000 Head</i>	<i>1,000 Head</i>	<i>1,000 Pounds</i>	<i>1,000 Pounds</i>	<i>Pounds</i>	<i>Pounds</i>
AL	10.3	8.4	4,702	3,828	460	455
AK		0.1		15		241
AZ	0.3	0.3	39	44	154	154
AR	12.9	16.6	5,751	7,450	445	449
CA	221.0	232.4	53,051	56,304	241	243
CO	0.8	0.8	200	192	257	245
DE-MD	1.7	1.5	454	408	264	265
FL	7.1	7.7	1,064	1,103	151	144
GA	13.2	11.1	2,870	2,435	217	219
HI	1.7	1.5	375	331	217	226
ID	14.6	15.0	3,708	3,895	255	261
IL	823.1	1,015.2	230,959	284,711	281	281
IN	676.2	763.3	179,392	204,909	265	269
IA	2,635.6	2,973.9	715,621	808,883	272	272
KS	15.1		6,473		430	
KY	225.9		60,065		266	
LA	1.4	1.4	271	295	187	205
MI	9.8	10.2	3,793	3,926	387	385
MN	840.3	907.7	221,048	238,740	263	264
MS		6.7		1,922		287
MO	559.4	721.8	154,997	201,375	277	279
MT	1.1	1.0	277	258	250	248
NE	623.2	720.1	169,159	195,065	272	271
NV						
N ENG <sup>2</sup>	1.4	1.4	300	303	216	220
NJ	8.2	9.9	853	996	105	100
NM	0.1	0.1	13	34	243	261
NY	2.4	2.2	453	411	188	186
NC	988.3	1,044.9	257,748	278,150	261	266
ND	13.2	10.7	3,259	2,766	246	260
OH	95.9	98.9	25,895	27,160	270	275
OK	413.8	457.8	113,397	127,911	274	280
OR	17.2	16.0	4,033	4,131	236	259
PA	246.6	251.4	62,337	64,672	253	258
SC						
SD	360.6	490.8	96,122	126,600	267	258
TN	53.1	60.8	25,594	28,771	483	474
TX	31.0	34.3	8,236	8,739	266	255
UT	4.9	5.9	913	975	187	166
VA	186.3	240.7	48,379	63,803	260	265
WA	2.0	2.6	419	513	214	196
WV	0.7	0.6	160	159	237	270
WI	44.6	49.5	19,719	22,061	451	453
WY	0.4	0.3	106	86	266	273
US <sup>3</sup>	9,365.5	10,557.1	2,535,127	2,875,461	271	273

<sup>1</sup> Includes slaughter under Federal inspection and other Commercial slaughter, excludes farm slaughter.

<sup>2</sup> N ENG includes CT, ME, MA, NH, RI, and VT.

<sup>3</sup> States with no data printed are still included in the US total, data not printed to avoid disclosing individual operations. Accumulated totals and percentages based on unrounded data.

**Commercial Sheep and Lamb Slaughter: By State and United States,  
January 2007 and 2008<sup>1</sup>**

State	Number Slaughtered		Total Live Weight		Average Live Weight	
	2007	2008	2007	2008	2007	2008
	<i>1,000 Head</i>	<i>1,000 Head</i>	<i>1,000 Pounds</i>	<i>1,000 Pounds</i>	<i>Pounds</i>	<i>Pounds</i>
AL						
AK						
AZ		0.1		6		108
AR		0.1		7		124
CA						
CO	86.9	84.5	13,332	12,982	153	154
DE-MD	2.7	2.7	280	275	102	100
FL	0.1	0.1	5	7	62	63
GA	0.4	0.6	52	69	135	116
HI						
ID	0.3	0.3	40	37	134	127
IL						
IN	1.8	1.9	197	206	109	110
IA	33.4	31.8	5,078	4,906	152	155
KS	0.1	0.2	12	23	118	95
KY	0.9	0.8	108	100	123	123
LA	0.1	0.2	9	16	67	83
MI	15.9	17.3	2,172	2,299	137	134
MN	0.2	0.4	23	45	119	120
MS						
MO	0.4	0.4	48	43	123	115
MT	0.2	0.3	26	32	106	103
NE		0.1		16		134
NV	0.1		8		129	
N ENG <sup>2</sup>	2.2	2.1	238	191	109	93
NJ	8.8	9.1	700	785	80	86
NM	1.0	1.3	130	186	137	148
NY	2.4	2.4	200	196	84	82
NC	0.5	0.6	40	46	85	82
ND	0.1	0.1	9	9	110	85
OH	0.9	0.8	98	86	108	105
OK		0.1		11		97
OR	1.8	1.6	232	228	129	139
PA	3.7	3.6	370	368	99	102
SC						
SD	1.4	0.7	190	86	132	126
TN	1.0	1.1	80	81	79	77
TX	1.3	2.9	105	239	79	83
UT	2.9	2.6	398	356	138	136
VA	0.7	1.1	70	108	101	98
WA	0.3	0.7	33	96	121	140
WV						
WI	0.9	0.8	120	100	133	130
WY	0.2	0.1	21	17	136	132
US <sup>3</sup>	216.7	213.4	30,197	29,649	139	139

<sup>1</sup> Includes slaughter under Federal inspection and other Commercial slaughter, excludes farm slaughter.

<sup>2</sup> N ENG includes CT, ME, MA, NH, RI, and VT.

<sup>3</sup> States with no data printed are still included in the US total, data not printed to avoid disclosing individual operations. Accumulated totals and percentages based on unrounded data.

**Classification of Livestock Slaughtered Under Federal Inspection:  
United States**

Item	Jan 2007	Dec 2007	Jan 2008	Jan <sup>1</sup>		Jan 2007	Dec 2007	Jan 2008	Jan <sup>1</sup>	
				2007	2008				2007	2008
	<i>1,000 Head</i>	<i>1,000 Head</i>	<i>1,000 Head</i>	<i>1,000 Head</i>	<i>1,000 Head</i>	<i>Percent of Total</i>	<i>Percent of Total</i>	<i>Percent of Total</i>	<i>Percent of Total</i>	<i>Percent of Total</i>
Class <sup>2</sup>										
Cattle										
Steers	1,385	1,279	1,391	1,385	1,391	50.4	49.2	48.8	50.4	48.8
Heifers	819	*799	867	819	867	29.8	30.7	30.5	29.8	30.5
All Cows	502	483	545	502	545	18.3	18.6	19.1	18.3	19.1
Dairy Cows	228	205	236	228	236	8.3	7.9	8.3	8.3	8.3
Other Cows	275	278	309	275	309	10.0	10.7	10.9	10.0	10.9
Bulls	42	41	45	42	45	1.5	1.6	1.6	1.5	1.6
Total <sup>1</sup>	2,748	*2,602	2,848	2,748	2,848	100.0	100.0	100.0	100.0	100.0
Calves & Vealers	73	60	70	73	70	100.0	100.0	100.0	100.0	100.0
Hogs										
Barrow & Gilts	8,954	9,301	10,128	8,954	10,128	96.5	96.9	96.7	96.5	96.7
Sows	286	264	304	286	304	3.1	2.8	2.9	3.1	2.9
Boars	41	36	42	41	42	0.4	0.4	0.4	0.4	0.4
Total <sup>1</sup>	9,281	9,601	10,474	9,281	10,474	100.0	100.0	100.0	100.0	100.0
Sheep										
Mature Sheep	9	11	9	9	9	4.4	5.2	4.5	4.4	4.5
Lambs & Yrlngs	195	201	193	195	193	95.6	94.8	95.5	95.6	95.5
Total <sup>1</sup>	204	212	202	204	202	100.0	100.0	100.0	100.0	100.0
Average Dressed Weight										
	<i>Pounds</i>	<i>Pounds</i>	<i>Pounds</i>	<i>Pounds</i>	<i>Pounds</i>					
Cattle	779	784	775	779	775					
Steers <sup>3</sup>	831	844	832	831	832					
Heifers <sup>3</sup>	772	784	773	772	773					
All Cows <sup>3</sup>	630	613	624	630	624					
Bulls <sup>3</sup>	909	871	878	909	878					
Calves & Vealers	194	172	159	194	159					
Hogs	203	204	205	203	205					
Barrow Gilts <sup>4</sup>	200	201	202	200	202					
Sows <sup>4</sup>	308	304	306	308	306					
Boars <sup>4</sup>	214	214	213	214	213					
Sheep	71	69	70	71	70					
Mature Sheep <sup>5</sup>	65	67	67	65	67					
Lamb & Yrlngs <sup>5</sup>	71	69	71	71	71					

\* Revised.

<sup>1</sup> Total and percentages based on unrounded data.

<sup>2</sup> Species totals and classification reported by meat inspectors, Inspection Operations, FSIS.

<sup>3</sup> Included in cattle average dressed weight.

<sup>4</sup> Included in hog average dressed weight.

<sup>5</sup> Included in sheep average dressed weight.

**Federally Inspected Slaughter: By Region and United States,  
January 2008<sup>1</sup>**

Standard Federal Regions	Cattle							Calves
	Total <sup>2</sup>	Steers	Heifers	Cows			Bulls	Total
				All	Dairy	Other		
	<i>1,000 Head</i>	<i>1,000 Head</i>	<i>1,000 Head</i>	<i>1,000 Head</i>	<i>1,000 Head</i>	<i>1,000 Head</i>	<i>1,000 Head</i>	<i>1,000 Head</i>
1	1.0	0.5	0.2					0.3
2	4.7	1.8	0.3	2.2	2.0	0.3	0.3	23.9
3	86.9	36.0	7.9	41.0	32.5	8.5	2.0	14.3
4	74.8	1.5	0.5	63.8	13.4	50.4	9.1	0.3
5	339.9	134.7	42.4	155.6	78.4	77.2	7.2	14.4
6	525.2	266.5	162.6	84.4	15.1	69.3	11.7	1.3
7	1,235.3	677.1	480.1	71.0	1.6	69.4	7.1	0.1
8	275.5	134.9	120.3					
9	185.6	90.5	11.7	80.6	74.2	6.3	2.9	14.8
10	118.7	47.2	41.1	27.5	12.2	15.3	2.9	
US <sup>2</sup>	2,847.6	1,390.6	867.2	544.8	235.7	309.2	45.0	70.4
				Hogs			Sheep	
	Total <sup>2</sup>	Barrows & Gilts	Sows	Boars	Total <sup>2</sup>	Mature Sheep	Lambs & Yearlings	
	<i>1,000 Head</i>	<i>1,000 Head</i>	<i>1,000 Head</i>	<i>1,000 Head</i>	<i>1,000 Head</i>	<i>1,000 Head</i>	<i>1,000 Head</i>	<i>1,000 Head</i>
1	1.1	1.0			1.9	0.1		1.8
2	11.9	11.6	0.2	0.1	10.9	1.0		9.9
3	491.8	475.8	2.2	13.8	7.3	0.2		7.1
4	1,463.0	1,377.9	83.0	2.2	2.8	0.9		1.9
5	2,809.4	2,677.2	128.1	4.1	30.9	3.1		27.8
6	504.1	476.8	25.7	1.6				
7	4,427.1	4,342.3	64.2	20.7	32.2	0.3		31.9
8	504.4	504.0	0.4		87.2	1.5		85.7
9	228.6	228.5						
10	32.6	32.5	0.1		1.9	0.1		1.7
US <sup>2</sup>	10,474.0	10,127.6	303.9	42.5	201.6	9.1		192.6

<sup>1</sup> States included in regions are as follows: 1- CT, ME, NH, VT, MA, & RI; 2- NY & NJ; 3- DE-MD, PA, WV, & VA; 4- AL, FL, GA, KY, MS, NC, SC, & TN; 5- IL, IN, MI, MN, OH, & WI; 6- AR, LA, NM, OK, & TX; 7- IA, KS, MO, & NE; 8- CO, MT, ND, SD, UT, & WY; 9- AZ, CA, HI & NV; 10- AK, ID, OR, & WA.

<sup>2</sup> Regions with no data printed are still included in the US and Region total, data not printed to avoid disclosing individual operations. Totals may not add due to rounding.

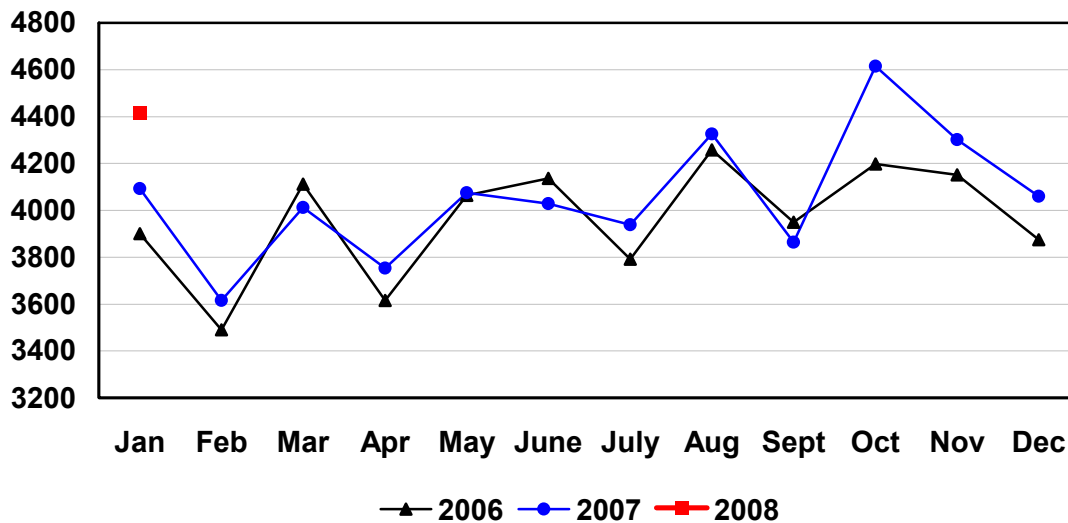
**Federally Inspected Slaughter: Percent of Total Commercial Slaughter by Species, United States**

Species	Jan 2007	Dec 2007	Jan 2008	Jan - Jan	
				2007	2008
	<i>Percent</i>	<i>Percent</i>	<i>Percent</i>	<i>Percent</i>	<i>Percent</i>
Cattle	98.2	98.3	98.2	98.2	98.2
Calves	98.6	98.1	98.5	98.6	98.5
Hogs	99.1	99.1	99.2	99.1	99.2
Sheep	94.2	*92.7	94.5	94.2	94.5

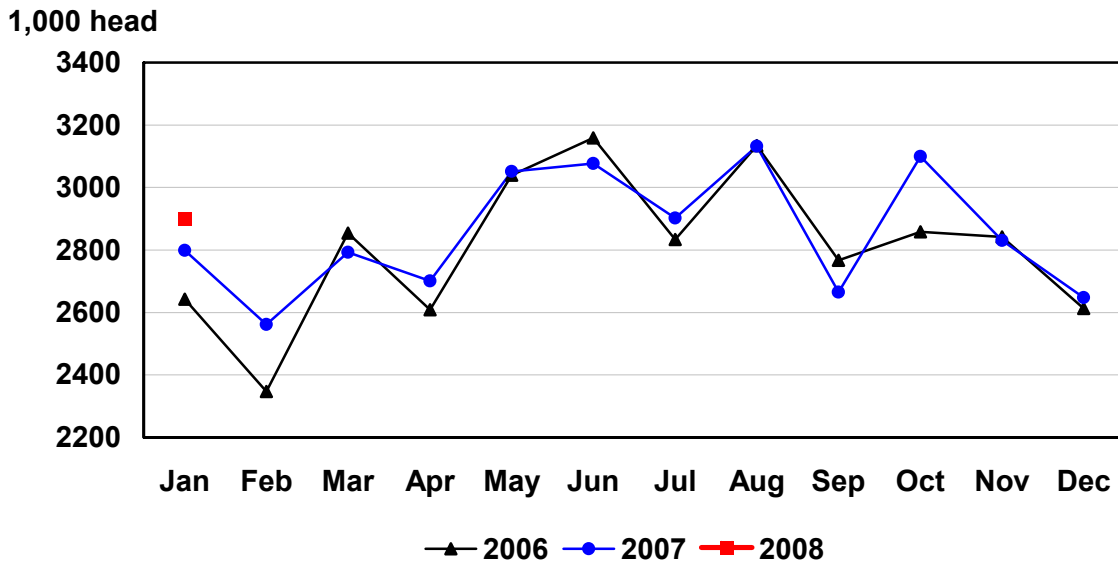
\* Revised.

## U.S. Monthly Commercial Red Meat Production

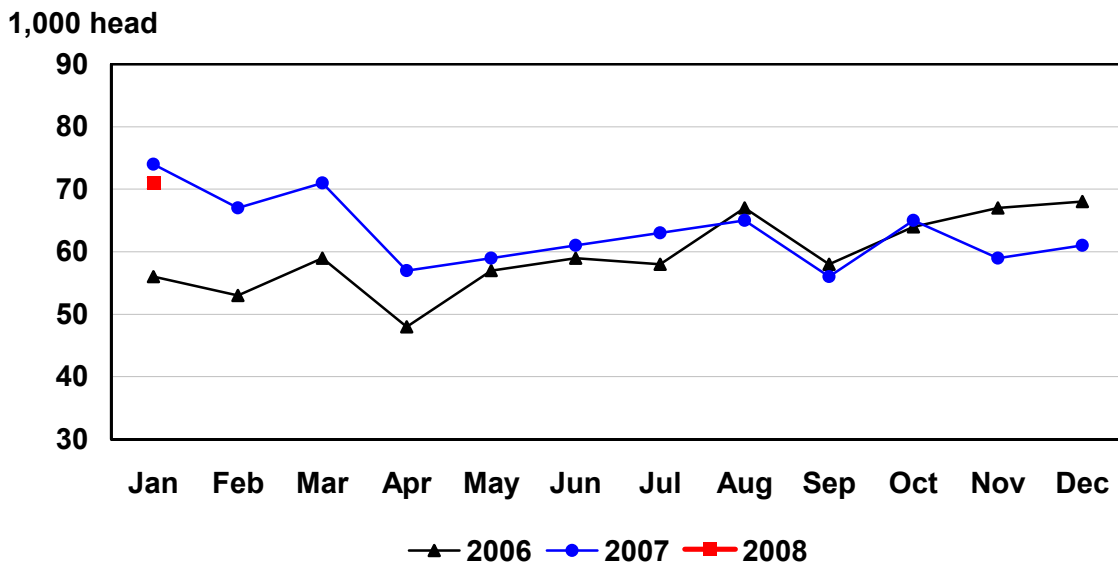
Million Pounds



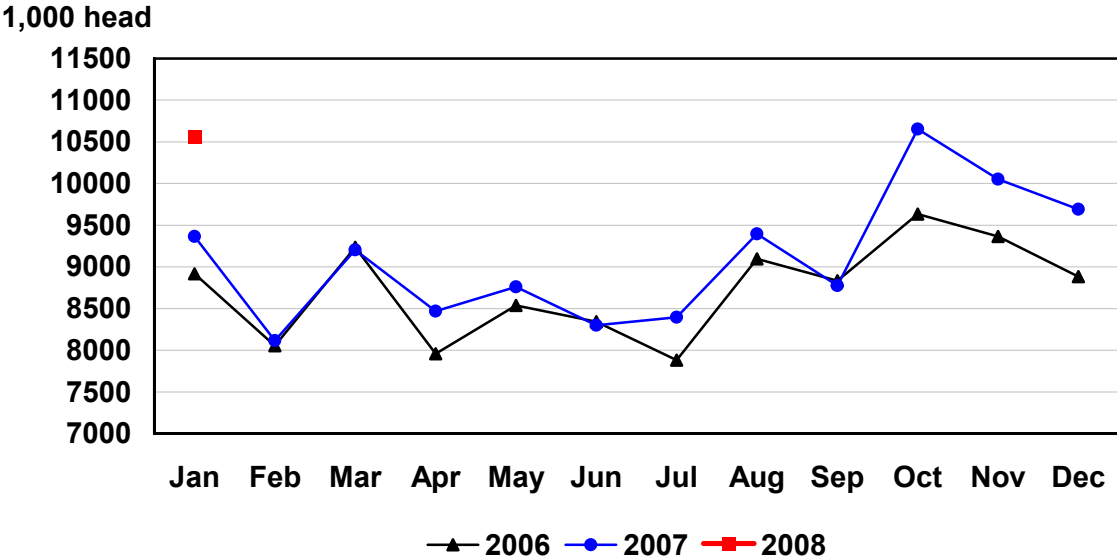
# U.S. Monthly Commercial Slaughter Cattle



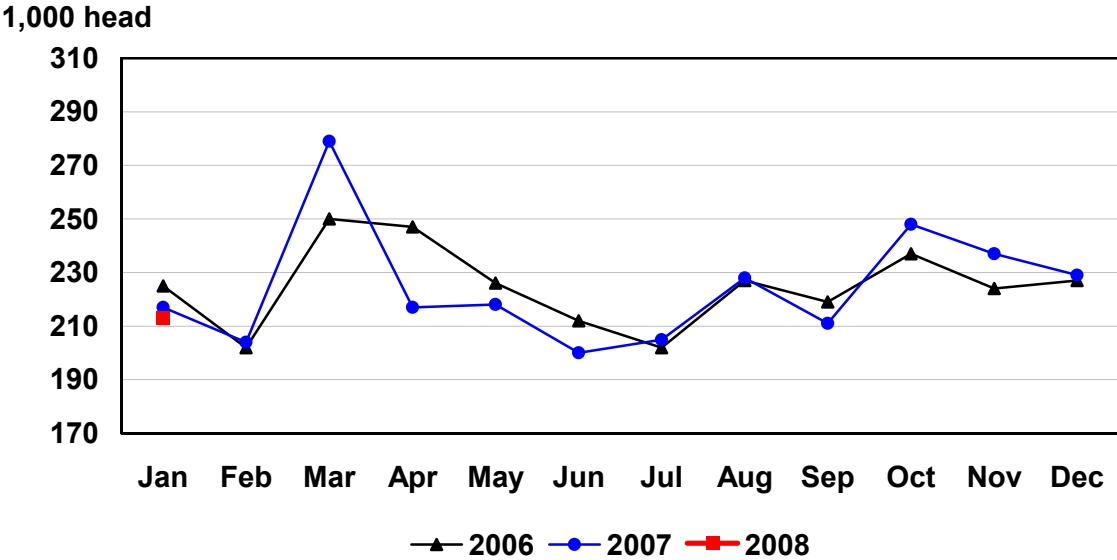
# U.S. Monthly Commercial Slaughter Calves



# U.S. Monthly Commercial Slaughter Hogs

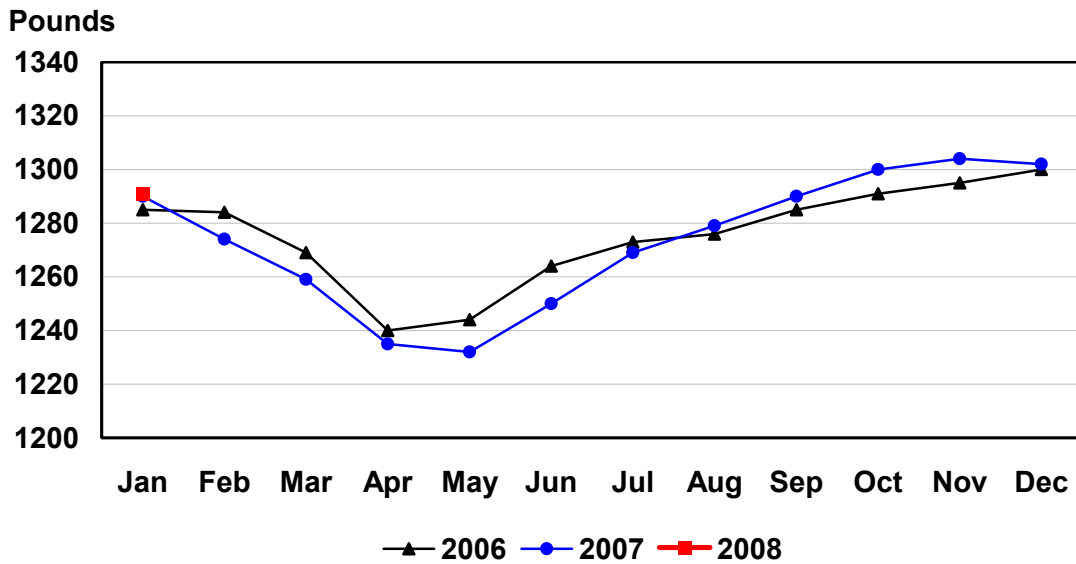


# U.S. Monthly Commercial Slaughter Sheep

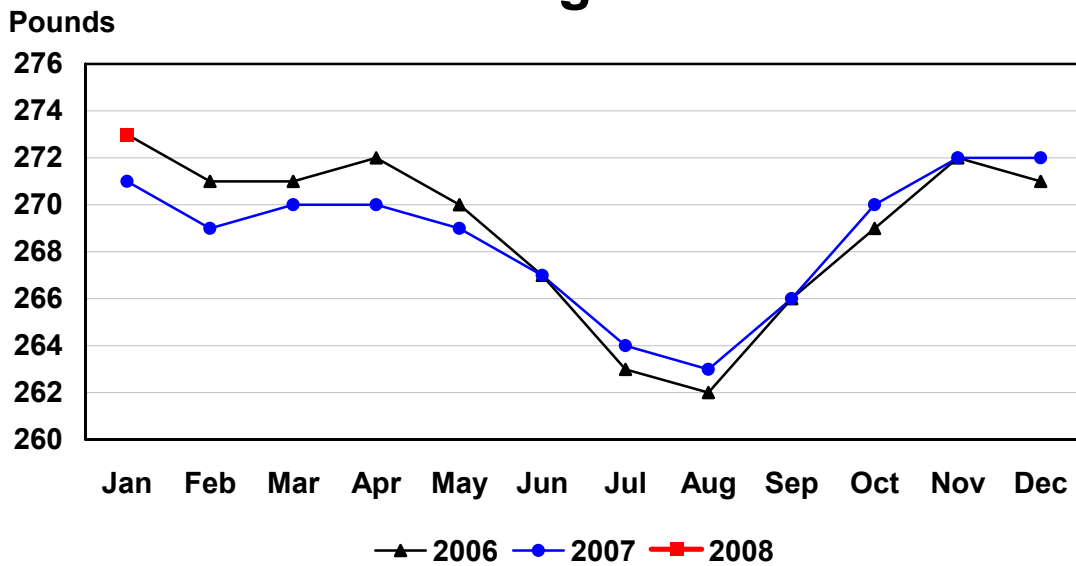




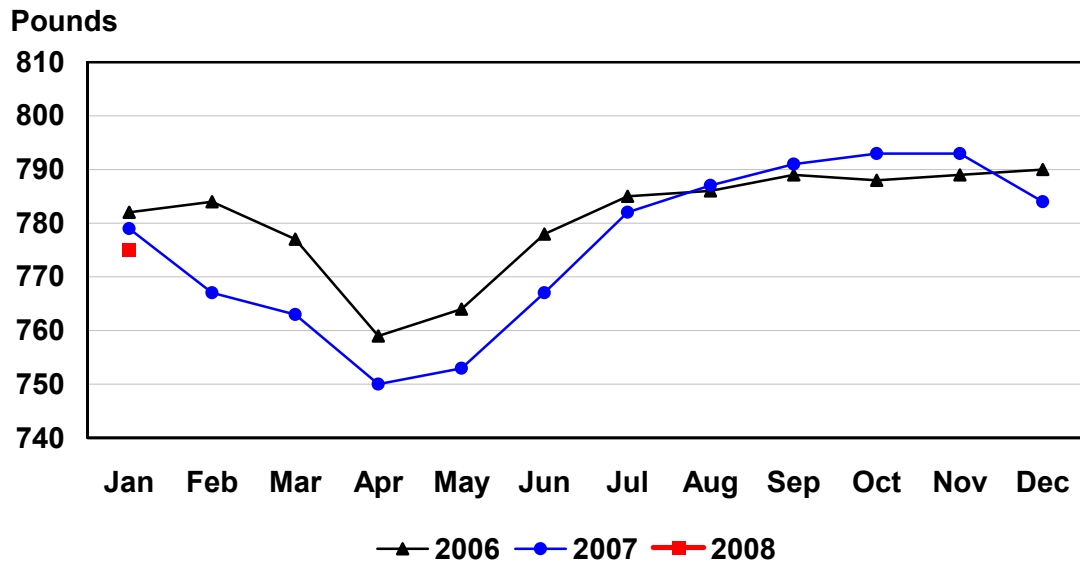
# U.S. Monthly Commercial Slaughter Average Live Weight Cattle



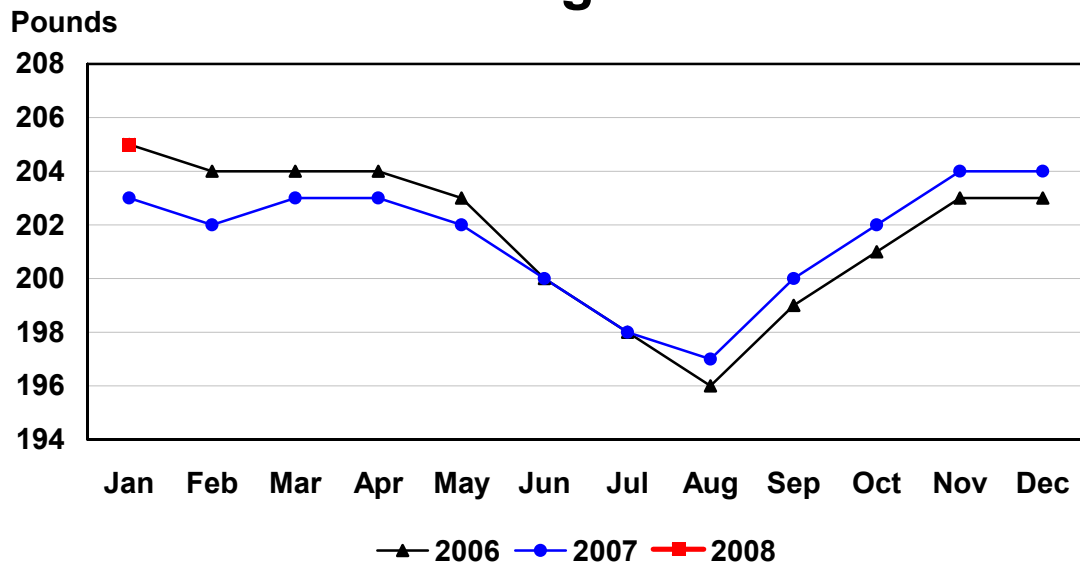
# U.S. Monthly Commercial Slaughter Average Live Weight Hogs



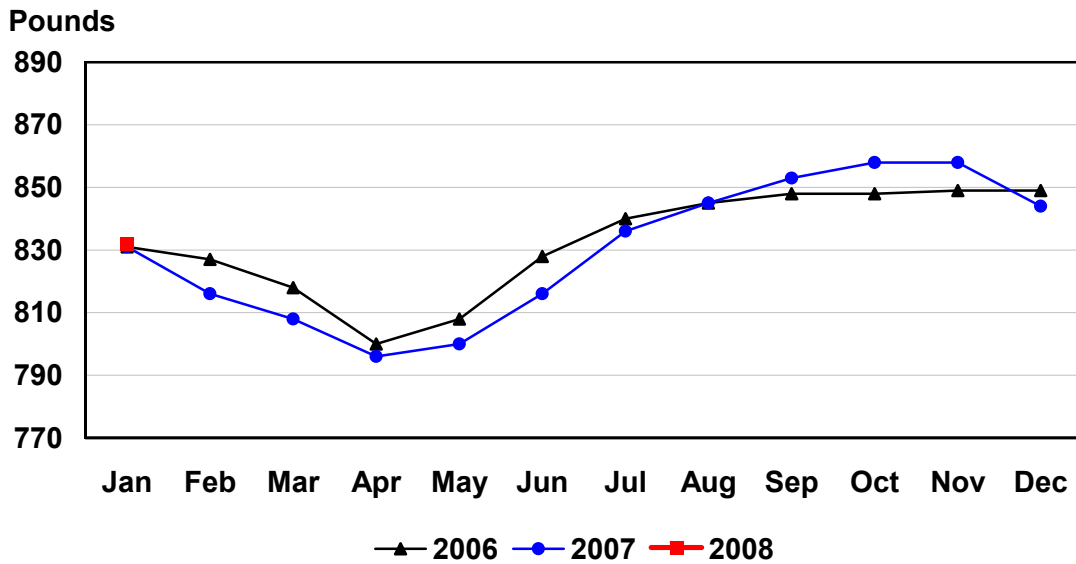
# U.S. Monthly Federally Inspected Average Dressed Weight Cattle



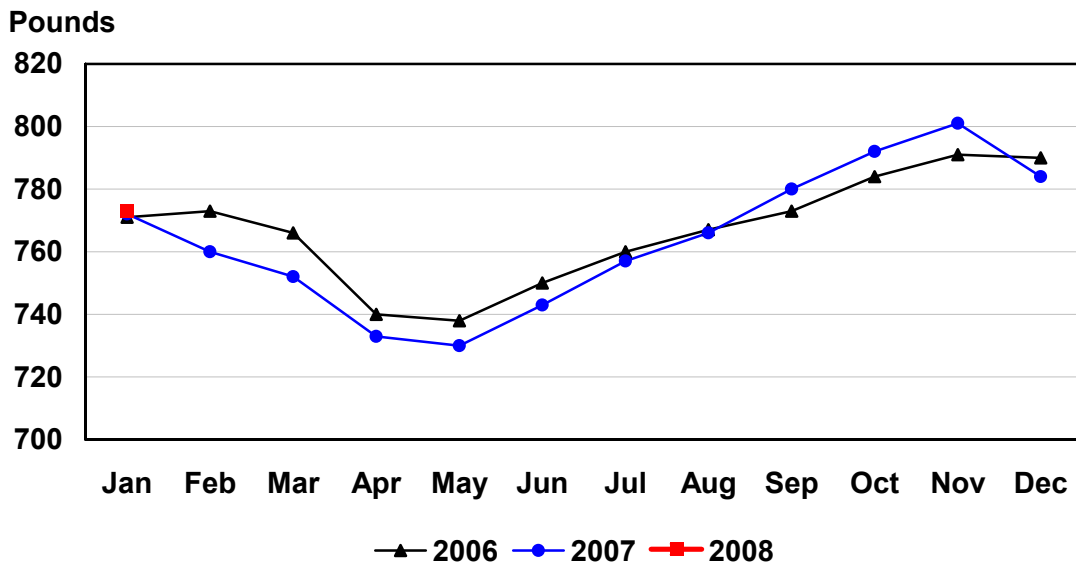
# U.S. Monthly Federally Inspected Average Dressed Weight Hogs



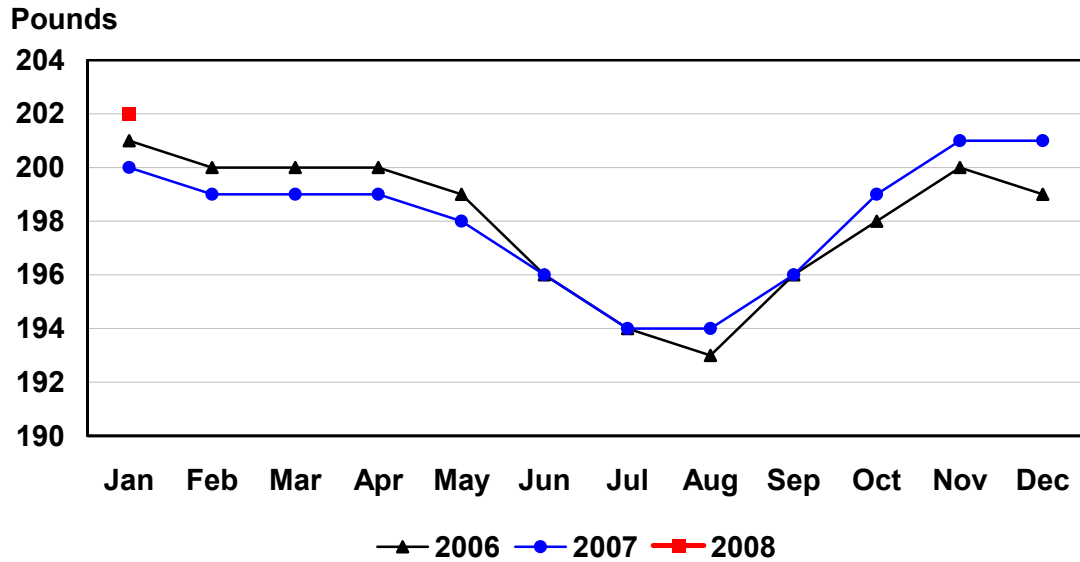
## U.S. Monthly Federally Inspected Average Dressed Weight Steers



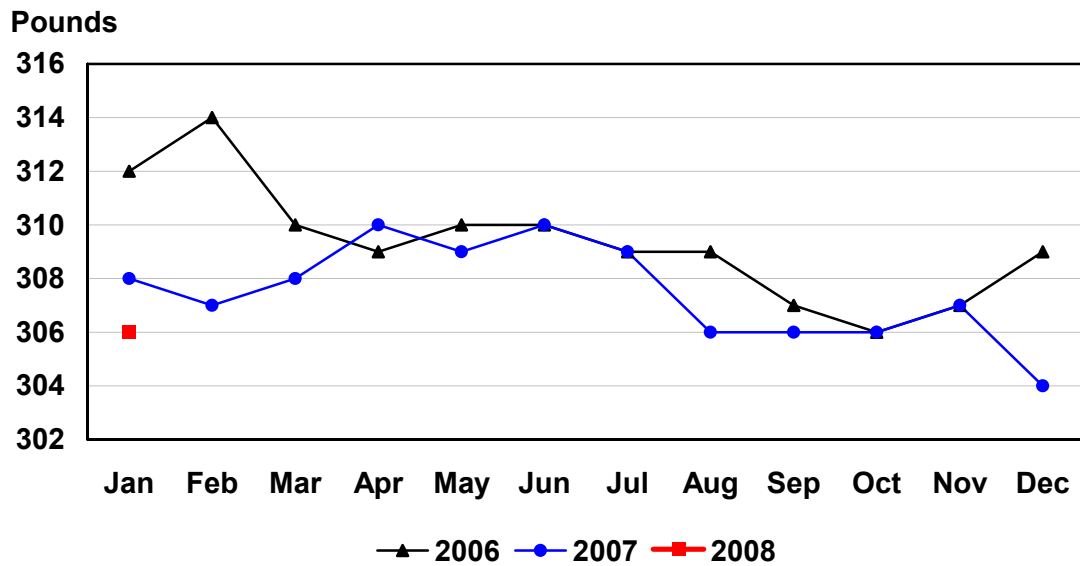
## U.S. Monthly Federally Inspected Average Dressed Weight Heifers



## U.S. Monthly Federally Inspected Average Dressed Weight Barrows and Gilts



## U.S. Monthly Federally Inspected Average Dressed Weight Sows



## Reliability of Livestock Slaughter Estimates

**Data Sources:** Primary data for the commercial livestock slaughter estimates are obtained from electronic reports completed by inspectors from the Food Safety and Inspection Service (FSIS), USDA, which provide daily counts of animals slaughtered in Federally Inspected (FI) plants, in addition to total live and dressed weights. These counts are combined with data from State-administered Non-Federally Inspected (NFI) slaughter plants to derive total commercial slaughter estimates. More than 95 percent of the total U.S. slaughter for any species is under Federal Inspection.

There are nearly 800 livestock slaughter plants in the U.S. operating under Federal Inspection and over 2,000 Non-Federally Inspected (State-inspected or custom-exempt) slaughter plants. Slaughter from State-inspected Talmedge-Aiken plants is included in FI totals (see Types of Plants, page 20). To prevent duplication in reporting between FI and NFI plants and assure all FI plants are included, certificates prepared by FSIS identifying operating status are constantly monitored

**Revision Policy:** Number of head slaughtered, live weights, and dressed weights are subject to revision the following month after the monthly release. Annual totals are published in the slaughter summary each March which includes any revisions made to current and previous year's published data. Revisions are generally the result of late reports received from slaughter plants and are usually less than one-half of one percent. No revisions will be made to the previous year's data after the publication of the annual summary in March.

**Procedures and Reliability:** The livestock slaughter data is obtained electronically on a daily basis and summarized approximately two weeks after the week of slaughter. An edit compares each plant's data with the historical data for that plant. Data are checked for unusual values for head kill, patterns of kill, average weights, and dressing percent, based on each plant's past operating profile. In addition, the edit provides a listing of missing reports for follow-up contact with FSIS. Average live and dressed weights and dressing percentages by State are compared with the previous weeks as an additional check. Fluctuations are frequently the result of plants permanently or temporarily closing and a shift in the species reported.

The FSIS District Veterinary Medical Specialists (DVMS) are contacted by e-mail or telephone for missing or potentially erroneous slaughter data. This assures that plants slaughtering a large number of head or several species are accounted for each week. Any corrections FSIS makes to the slaughter data are included in the summary.

Imputation may be necessary for incomplete reports. The imputation of live and dressed weights is based on the current week reported data of plants of similar size and location. Imputation for live and dressed weight data for cattle and hogs is less than 10 percent and 7 percent, respectively. The imputation for calves and sheep is more frequent and variable. If no data is received electronically or by other means, for plants slaughtering fewer than 50 total head weekly of only one species, data are imputed. The imputation of head for any plant is based on the historical data for that particular plant. The imputation of head slaughtered is rare but when necessary, the imputed head kill for missing plants usually is less than 1 percent of the U.S. head kill totals.

FI data are summarized weekly and accumulated to a monthly total for this release. These weekly totals are published by USDA's Agricultural Marketing Service (AMS) in **Livestock, Meat, Wool Market News**, Weekly Summary, and Statistics and are also available on the NASS website. NFI data are summarized monthly only.

Livestock slaughter estimates are based on a census of operating plants and therefore, have no sampling error. However, they may be subject to errors such as omissions, duplications and mistakes in reporting, recording and processing the data. These errors are minimized through rigid quality controls in the edit and summarization process, and a careful review of all reported data for consistency and reasonableness.

No data are published when an individual plant's data could be divulged. If not published, these data are still included in US and region totals. A review of the data is made annually to determine the publishable data.

### **Types of Livestock Slaughter Plants**

There are generally **four types** of slaughtering plants.

- (1) **Federally Inspected (FI) Plants:** Plants that transport meat interstate must employ federal inspectors to assure compliance with USDA standards. Any State whose commercial plants operate entirely under federal inspection may still have custom-exempt establishments for which NFI estimates are made.
- (2) **Talmedge-Aiken (TA) Plants:** Slaughter plants in which USDA is responsible for inspection. However, federal inspection is carried out by State employees. These plants are considered to be federally inspected.
- (3) **Non-Federally Inspected (NFI) Plants:** Plants which sell and transport only intrastate. State inspectors assure compliance with individual State standards for these NFI plants. Mobile slaughtering units are excluded and are considered farm slaughter.
- (4) **Custom-Exempt Plants:** Plants that do not sell meat but operate on a custom basis only are custom-exempt. The animals and meat are not inspected, but the facilities must meet health standards. These are considered NFI plants and head kill is included in NFI totals.

## Terms and Definitions Used for Livestock Slaughter Estimates

**Commercial Production:** Includes slaughter and meat production in federally inspected and other plants, but excludes animals slaughtered on farms.

**Dressed Weight:** The weight of a chilled animal carcass. Beef with kidney knob in; veal with hide off; lamb and mutton with pluck out; pork with leaf fat and kidneys out, jowls on and head off.

**Dressing Percent:** Usually expressed as a percentage yield of chilled carcass in relation to the weight of the live animal on hoof. For example, a live hog that weighed 200 pounds on hoof and yielded a carcass weighing 140 pounds would have a dressing percentage of 70.

**Food and Meat Inspection:** Includes examination, checking, or testing of a carcass and/or meat against established government standards and involves checking the facility for cleanliness, health of animals, or parts of animals and quality of the meat produced.

**Live Weight:** The gross weight of a live animal when received at the slaughter plant.

**Plant, Slaughter:** An establishment where animals are killed and butchered.

**Red Meat:** Red meat production is the carcass weight after slaughter excluding condemnation and is comprised of beef, veal, pork, and lamb and mutton. The FI red meat production is equal to the total carcass weight after slaughter. The NFI meat production formula is (NFI head kill) X (live weight) X (FI dressing percentage) = NFI red meat production.

**Slaughter:** Killing and butchering of animals primarily for food.

**Slaughter, Farm:** Animals slaughtered on farms primarily for home consumption. Excludes custom slaughter for farmers at commercial establishments, but includes mobile slaughtering on farms. These estimates appear only in the annual slaughter release.

**Wholesome Meat Act:** Legislation that specifies that all meat produced for sale in the U.S. must be inspected. Meat that is transported interstate must be inspected in compliance with Federal (USDA) Standards.

### Information Contacts

Listed below are the commodity specialists in the Livestock Branch of the National Agricultural Statistics Service to contact for additional information.

Dan Kerestes, Chief, Livestock Branch.....	(202) 720-3570
Shawn Clark, Head, Livestock Section .....	(202) 720-3570
Bruce Boess – Hogs and Pigs .....	(202) 720-3106
Jim Collom – Dairy Products.....	(202) 690-3236
Joe Gaynor – Dairy Products Prices.....	(202) 690-2168
Jason Hardegree – Milk Production and Milk Cows.....	(202) 720-3278
Benita Hodge – Livestock Slaughter .....	(515) 284-4340
Scott Hollis – Sheep and Goats.....	(202) 720-4751
Mike Miller – Cattle, Cattle on Feed.....	(202) 720-3040

## ACCESS TO REPORTS!!

---

For your convenience, there are several ways to obtain NASS reports, data products, and services:

### INTERNET ACCESS

All NASS reports are available free of charge on the worldwide Internet. For access, connect to the Internet and go to the NASS Home Page at: [www.nass.usda.gov](http://www.nass.usda.gov).

### E-MAIL SUBSCRIPTION

All NASS reports are available by subscription free of charge direct to your e-mail address. Starting with the NASS Home Page at [www.nass.usda.gov](http://www.nass.usda.gov), under the right navigation, *Receive reports by Email*, click on **National** or **State**. Follow the instructions on the screen.

-----

### PRINTED REPORTS OR DATA PRODUCTS

**CALL OUR TOLL-FREE ORDER DESK: 800-999-6779 (U.S. and Canada)**  
**Other areas, please call 703-605-6220      FAX: 703-605-6900**  
**(Visa, MasterCard, check, or money order acceptable for payment.)**

-----

### ASSISTANCE

For **assistance** with general agricultural statistics or further information about NASS or its products or services, contact the **Agricultural Statistics Hotline** at **800-727-9540**, 7:30 a.m. to 4:00 p.m. ET, or e-mail: [nass@nass.usda.gov](mailto:nass@nass.usda.gov).

The U.S. Department of Agriculture (USDA) prohibits discrimination in all its programs and activities on the basis of race, color, national origin, age, disability, and where applicable, sex, marital status, familial status, parental status, religion, sexual orientation, genetic information, political beliefs, reprisal, or because all or part of an individual's income is derived from any public assistance program. (Not all prohibited bases apply to all programs.) Persons with disabilities who require alternative means for communication of program information (Braille, large print, audiotape, etc.) should contact USDA's TARGET Center at (202) 720-2600 (voice and TDD).

To file a complaint of discrimination, write to USDA, Director, Office of Civil Rights, 1400 Independence Avenue, S.W., Washington, D.C. 20250-9410, or call (800) 795-3272 (voice) or (202) 720-6382 (TDD). USDA is an equal opportunity provider and employer.