

---

Released March 20, 2008, by the National Agricultural Statistics Service (NASS), Agricultural Statistics Board, U.S. Department of Agriculture. For information on *Livestock Slaughter* call Benita Hodge at (515) 284-4340, office hours 7:00 a.m. to 4:00 p.m. CT.

## Total Red Meat Production Down from Previous Month

**Commercial red meat production** for the United States totaled 3.97 billion pounds in February, up 10 percent from the 3.62 billion pounds produced in February 2007.

**Beef production**, at 2.04 billion pounds, was 4 percent above the previous year. Cattle slaughter totaled 2.64 million head, up 3 percent from February 2007. The average live weight was up 11 pounds from the previous year, at 1,285 pounds.

**Veal production** totaled 11.0 million pounds, 9 percent below February a year ago. Calf slaughter totaled 69,100 head, up 4 percent from February 2007. The average live weight was down 36 pounds from last year, at 272 pounds.

**Pork production** totaled 1.90 billion pounds, up 16 percent from the previous year. Hog kill totaled 9.38 million head, up 16 percent from February 2007. The average live weight was up 2 pounds from the previous year, at 271 pounds.

**Lamb and mutton production**, at 15.0 million pounds, was up 4 percent from February 2007. Sheep slaughter totaled 211,400 head, 3 percent above last year. The average live weight was 143 pounds, up 3 pounds from February a year ago.

**January to February 2008 commercial red meat production** was 8.38 billion pounds, up 9 percent from 2007. Accumulated beef production was up 4 percent from last year, veal was down 16 percent, pork was up 15 percent from last year, and lamb and mutton production was up 1 percent.

**February 2007** contained 20 weekdays (including one holiday) and 4 Saturdays.

**February 2008** contained 21 weekdays (including one holiday) and 4 Saturdays.



## Contents

	<b>Page</b>
Red Meat Production, Commercial and FI, by Type, U.S.....	1
Livestock Slaughter, Number and Average Weights, by Species and Type of Slaughter, U.S.....	2
Commercial Red Meat Production, by State and U.S.....	3
Commercial Cattle Slaughter, Number, Total and Average Live Weight, by State and U.S.....	4
Commercial Calf Slaughter, Number, Total and Average Live Weight, by State and U.S.....	5
Commercial Hog Slaughter, Number, Total and Average Live Weight, by State and U.S.....	6
Commercial Sheep and Lamb Slaughter, Number, Total and Average Live Weight, by State and U.S. ....	7
Federally Inspected Classification of Number and Average Dressed Weight, by Species and Class and U.S.....	8
Federally Inspected Slaughter by Species and Class, by Region and U.S. ....	9
Federally Inspected Percent of Total Commercial, by Species, U.S. ....	11
Reliability Statement.....	18
Types of Plants.....	19
Terms and Definitions.....	20
Information Contacts.....	20



**Commercial Red Meat Production: United States <sup>1</sup>**

Type	Feb 2007	Jan 2008	Feb 2008	Feb 08 % of		Jan - Feb <sup>2</sup>		
				Feb 2007	Jan 2008	2007	2008	08 as % of 07
	<i>Million Pounds</i>	<i>Million Pounds</i>	<i>Million Pounds</i>	<i>Percent</i>	<i>Percent</i>	<i>Million Pounds</i>	<i>Million Pounds</i>	<i>Percent</i>
Beef	1,952.5	2,232.0	2,039.0	104	91	4,118.4	4,271.0	104
Veal	12.1	11.3	11.0	91	98	26.4	22.3	84
Pork	1,636.3	2,157.8	1,902.6	116	88	3,534.8	4,060.5	115
Lamb & Mutton	14.4	14.8	15.0	104	102	29.5	29.8	101
Total Red Meat <sup>3</sup>	3,615.4	4,415.9	3,967.6	110	90	7,709.1	8,383.5	109

<sup>1</sup> Based on packers' dressed weights and excludes farm slaughter.

<sup>2</sup> Accumulated totals and percentages based on unrounded data.

<sup>3</sup> Totals may not equal sum of the parts due to rounding.

**Federally Inspected Red Meat Production: United States <sup>1</sup>**

Type	Feb 2007	Jan 2008	Feb 2008	Feb 08 % of		Jan - Feb <sup>2</sup>		
				Feb 2007	Jan 2008	2007	2008	08 as % of 07
	<i>Million Pounds</i>	<i>Million Pounds</i>	<i>Million Pounds</i>	<i>Percent</i>	<i>Percent</i>	<i>Million Pounds</i>	<i>Million Pounds</i>	<i>Percent</i>
Beef	1,924.2	2,199.4	2,009.7	104	91	4,055.9	4,209.1	104
Veal	11.9	11.0	10.8	90	98	25.9	21.8	84
Pork	1,623.2	2,143.4	1,888.3	116	88	3,507.5	4,031.7	115
Lamb & Mutton	13.9	14.2	14.5	104	102	28.4	28.7	101
Total Red Meat <sup>3</sup>	3,573.2	4,368.0	3,923.3	110	90	7,617.7	8,291.3	109

<sup>1</sup> Based on packers' dressed weights and excludes farm slaughter.

<sup>2</sup> Accumulated totals and percentages based on unrounded data.

<sup>3</sup> Totals may not equal sum of the parts due to rounding.

**Livestock Slaughter: Number and Average Weights, United States <sup>1</sup>**

Species	Unit	Feb 2007	Jan 2008	Feb 2008	Feb 08 % of		Jan - Feb <sup>2</sup>		
					Feb 2007	Jan 2008	2007	2008	08 % of 07
					<i>Percent</i>	<i>Percent</i>			<i>Prct</i>
Cattle No.									
Fed. Insp.	Thou	2,517.6	*2,847.4	2,598.0	103	91	5,265.6	5,445.4	103
Other	Thou	43.6	51.0	45.2	104	89	95.8	96.2	100
Comm'l. <sup>3</sup>	Thou	2,561.2	*2,898.4	2,643.2	103	91	5,361.4	5,541.7	103
Live Wt/Hd									
Fed. Insp.	Lbs	1,276	1,294	1,287	101	99	1,284	1,291	100
Other	Lbs	1,152	1,141	1,148	100	101	1,155	1,144	99
Comm'l.	Lbs	1,274	1,291	1,285	101	99	1,282	1,288	100
Calves No.									
Fed. Insp.	Thou	65.6	70.4	67.9	104	96	138.8	138.3	100
Other	Thou	1.1	1.1	1.2	102	107	2.2	2.3	103
Comm'l. <sup>3</sup>	Thou	66.7	71.5	69.1	104	97	141.0	140.5	100
Live Wt/Hd									
Fed. Insp.	Lbs	306	267	270	88	101	315	269	85
Other	Lbs	403	416	389	97	94	395	402	102
Comm'l.	Lbs	308	269	272	88	101	316	271	86
Hogs No.									
Fed. Insp.	Thou	8,039.8	*10,474.1	9,297.4	116	89	17,321.2	19,771.5	114
Other	Thou	77.5	83.1	80.7	104	97	161.1	163.8	102
Comm'l. <sup>3</sup>	Thou	8,117.3	10,557.1	9,378.1	116	89	17,482.3	19,935.2	114
Live Wt/Hd									
Fed. Insp.	Lbs	270	273	271	100	99	271	272	101
Other	Lbs	234	239	245	105	102	234	242	103
Comm'l.	Lbs	269	273	271	100	99	270	272	101
Sheep&Lambs No.									
Fed. Insp.	Thou	194.3	201.6	201.4	104	100	398.5	403.1	101
Other	Thou	10.4	11.8	9.9	95	84	21.0	21.7	103
Comm'l. <sup>3</sup>	Thou	204.7	213.4	211.4	103	99	419.5	424.8	101
Live Wt/Hd									
Fed. Insp.	Lbs	143	141	144	101	102	142	143	101
Other	Lbs	96	102	108	112	106	102	105	102
Comm'l.	Lbs	140	139	143	102	103	140	141	101
Goats No.									
Fed. Insp.	Thou	40.8	49.1	44.9	110	91	86.5	94.0	109
Other	Thou	14.0	12.4	15.1	108	122	26.1	27.5	105
Comm'l. <sup>3</sup>	Thou	54.7	61.5	60.0	110	98	112.6	121.4	108
Live Wt/Hd									
Fed. Insp.	Lbs	63	63	61	98	98	63	62	99
Other	Lbs	56	50	67	120	134	60	59	98
Comm'l.	Lbs	61	60	63	103	105	62	61	99
Bison No.									
Fed. Insp.	Thou	3.3	4.8	4.9	149	102	7.5	9.7	129
Other	Thou	1.7	1.8	1.5	89	86	3.5	3.3	94
Comm'l. <sup>3</sup>	Thou	5.0	6.5	6.4	128	98	11.0	13.0	118

\* Revised.

<sup>1</sup> Excludes slaughter on farms.

<sup>2</sup> Accumulated totals and percentages based on unrounded data.

<sup>3</sup> Totals may not equal sum of the parts due to rounding.

**Commercial Red Meat Production: By State and United States <sup>1</sup>**

State	Feb 2007	Jan 2008	Feb 2008	Feb 08 as % of <sup>2</sup>	
				Feb 2007	Jan 2008
	<i>Million Pounds</i>	<i>Million Pounds</i>	<i>Million Pounds</i>	<i>Percent</i>	<i>Percent</i>
AL	2.2	2.3	2.0	90	84
AK					
AZ	31.1	34.0	35.4	114	104
AR	4.2	5.5	5.2	122	95
CA	131.7	148.4	134.4	102	91
CO	141.5	175.5	171.4	121	98
DE-MD	3.1	3.4	3.0	94	88
FL	6.2	8.2	6.7	109	82
GA	13.3	14.2	12.5	94	88
HI	0.7	0.9	0.8	109	86
ID	7.7	16.3	18.2	235	112
IL	203.4	274.4	245.0	120	89
IN	114.6	158.6	134.9	118	85
IA	486.7	655.1	571.6	117	87
KS	453.0	484.1	406.9	90	84
KY	38.2	55.0	45.0	118	82
LA	0.8	0.6	0.6	81	109
MI	36.8	42.5	41.5	113	98
MN	188.1	232.4	203.2	108	87
MS	22.2	1.4	1.3	6	94
MO	108.8	157.9	141.5	130	90
MT	1.5	1.4	1.3	87	92
NE	537.0	618.1	568.0	106	92
NV	0.1	0.1	0.1	152	106
N ENG <sup>3</sup>	0.8	1.1	0.9	105	77
NJ	4.3	4.2	3.9	91	93
NM	0.5	0.4	0.4	82	109
NY	2.4	3.0	2.5	105	83
NC	181.0	221.7	212.8	118	96
ND	2.5	2.7	2.3	92	86
OH	21.5	26.4	24.6	114	93
OK	80.5	98.5	89.8	112	91
OR	4.2	5.1	4.4	106	87
PA	96.9	113.6	102.0	105	90
SC	19.5	23.5	21.9	113	93
SD	70.5	105.8	84.1	119	79
TN	16.0	20.7	16.8	104	81
TX	331.9	*403.7	383.1	115	95
UT	34.2	42.5	43.5	127	102
VA	34.8	48.9	44.4	128	91
WA	70.7	76.3	66.0	93	86
WV	0.4	0.7	0.5	105	71
WI	109.3	126.5	113.0	103	89
WY	0.6	0.6	0.5	90	92
US	3,615.4	4,415.9	3,967.6	110	90

\* Revised.

<sup>1</sup> Includes total beef, veal, pork, lamb, and mutton.

<sup>2</sup> Percentages based on unrounded data.

<sup>3</sup> N ENG includes CT, ME, MA, NH, RI, and VT.

**Commercial Cattle Slaughter: By State and United States,  
February 2007 and 2008 <sup>1</sup>**

State	Number Slaughtered		Total Live Weight		Average Live Weight	
	2007	2008	2007	2008	2007	2008
	<i>1,000 Head</i>	<i>1,000 Head</i>	<i>1,000 Pounds</i>	<i>1,000 Pounds</i>	<i>Pounds</i>	<i>Pounds</i>
AL	0.3	0.5	343	439	1,086	937
AK						
AZ	38.5	44.9	53,598	63,151	1,398	1,413
AR	0.8	0.9	851	964	1,041	1,030
CA	126.5	128.8	168,380	163,119	1,356	1,288
CO	165.3	201.8	215,134	262,218	1,302	1,300
DE-MD	3.4	3.2	4,572	4,226	1,341	1,315
FL						
GA	25.2		23,132		926	
HI	0.8	0.8	867	943	1,094	1,131
ID	8.1	23.3	10,682	29,032	1,341	1,272
IL						
IN	2.6	3.0	2,755	3,199	1,048	1,052
IA						
KS	576.7	500.7	713,198	630,132	1,237	1,259
KY	1.5	1.6	1,400	1,510	943	951
LA	0.7	0.5	669	438	944	819
MI	42.2	47.2	57,972	65,581	1,381	1,396
MN	61.9	63.4	86,226	90,513	1,403	1,439
MS	0.1	0.1	140	85	1,015	880
MO	6.9	7.6	8,352	9,082	1,228	1,203
MT	1.8	1.6	2,162	1,927	1,205	1,204
NE	529.6	540.9	698,733	719,116	1,322	1,332
NV	0.1	0.1	85	148	1,052	1,124
N ENG <sup>2</sup>	0.9	0.9	957	1,041	1,074	1,113
NJ	2.0	2.5	2,524	3,003	1,246	1,225
NM	0.9	0.5	810	497	983	1,073
NY	1.8	2.0	2,019	2,424	1,139	1,212
NC	15.4	17.9	18,201	20,654	1,185	1,160
ND	0.9	1.2	1,100	1,418	1,207	1,228
OH	8.3	9.3	9,739	10,959	1,178	1,190
OK	1.9	2.2	2,059	2,486	1,092	1,118
OR	2.3	2.7	2,685	3,135	1,213	1,228
PA	69.3	73.6	86,714	93,535	1,259	1,281
SC	11.9	12.9	13,797	14,353	1,166	1,121
SD						
TN	1.8	2.3	1,640	2,033	929	920
TX	451.5	499.1	534,437	611,638	1,187	1,229
UT	43.0	54.6	55,482	70,022	1,294	1,285
VA	1.2	1.1	1,332	1,111	1,068	1,057
WA	86.2	83.3	114,550	107,576	1,333	1,298
WV	0.6	0.7	624	701	1,099	1,018
WI	131.1	132.4	177,530	178,317	1,369	1,362
WY	0.7	0.6	800	709	1,202	1,219
US <sup>3</sup>	2,561.2	2,643.2	3,249,960	3,383,319	1,274	1,285

<sup>1</sup> Includes slaughter under Federal inspection and other Commercial slaughter, excludes farm slaughter.

<sup>2</sup> N ENG includes CT, ME, MA, NH, RI, and VT.

<sup>3</sup> States with no data printed are still included in the US total, data not printed to avoid disclosing individual operations. Accumulated totals and percentages based on unrounded data.



**Commercial Calf Slaughter: By State and United States,  
February 2007 and 2008 <sup>1</sup>**

State	Number Slaughtered		Total Live Weight		Average Live Weight	
	2007	2008	2007	2008	2007	2008
	<i>1,000 Head</i>	<i>1,000 Head</i>	<i>1,000 Pounds</i>	<i>1,000 Pounds</i>	<i>Pounds</i>	<i>Pounds</i>
AL						
AK						
AZ						
AR						
CA	9.7	15.6	1,297	1,769	134	115
CO						
DE-MD	0.2	0.2	53	43	336	268
FL		0.1		20		390
GA	0.1	0.1	43	40	402	450
HI						
ID						
IL	3.7	2.6	1,560	1,092	427	428
IN						
IA		0.1		22		331
KS						
KY						
LA	0.3	0.3	180	147	525	506
MI	2.0	1.6	868	630	425	399
MN						
MS						
MO						
MT						
NE						
NV						
N ENG <sup>2</sup>	0.1	0.2	27	67	245	333
NJ	7.6	5.5	3,333	2,289	440	413
NM	1.5	0.7	133	63	87	87
NY	13.0	14.2	1,553	1,406	123	103
NC	0.1	0.1	52	57	546	486
ND						
OH	0.1	0.1	23	27	350	350
OK						
OR						
PA	15.0	13.9	5,618	5,558	376	401
SC						
SD						
TN	0.1	0.1	48	31	455	397
TX	1.7	1.8	1,067	883	613	492
UT						
VA						
WA						
WV						
WI						
WY						
US <sup>3</sup>	66.7	69.1	20,375	18,577	308	272

<sup>1</sup> Includes slaughter under Federal inspection and other Commercial slaughter, excludes farm slaughter.

<sup>2</sup> N ENG includes CT, ME, MA, NH, RI, and VT.

<sup>3</sup> States with no data printed are still included in the US total, data not printed to avoid disclosing individual operations. Accumulated totals and percentages based on unrounded data.

**Commercial Hog Slaughter: By State and United States,  
February 2007 and 2008 <sup>1</sup>**

State	Number Slaughtered		Total Live Weight		Average Live Weight	
	2007	2008	2007	2008	2007	2008
	<i>1,000 Head</i>	<i>1,000 Head</i>	<i>1,000 Pounds</i>	<i>1,000 Pounds</i>	<i>Pounds</i>	<i>Pounds</i>
AL	7.5	6.9	3,433	3,020	457	437
AK	0.1	0.1	14	16	225	252
AZ	0.2	0.1	34	27	187	229
AR	12.7	15.3	5,722	7,078	453	462
CA	204.1	208.9	48,164	51,048	236	245
CO	0.8	0.7	189	177	245	245
DE-MD	1.4	1.5	384	403	272	268
FL	6.7	7.5	1,055	1,009	159	136
GA	11.3	9.9	2,408	2,237	214	225
HI	1.5	1.5	338	339	219	225
ID	12.0	13.0	3,038	3,373	254	261
IL	711.7	890.9	198,613	248,591	279	279
IN	564.5	660.1	148,746	174,902	264	265
IA	2,198.4	2,606.6	594,082	703,378	270	270
KS	14.1		6,341		451	
KY	186.9		49,582		266	
LA	1.6	1.5	340	354	211	229
MI	8.9	9.2	3,375	3,620	383	393
MN	714.4	789.7	187,882	205,844	263	261
MS		5.8		1,785		306
MO	499.9	652.8	137,667	180,128	276	276
MT	1.1	1.0	245	240	225	243
NE	552.6	645.2	149,139	173,193	270	269
NV						
N ENG <sup>2</sup>	1.1	1.1	229	235	212	217
NJ	9.7	8.0	976	804	101	100
NM	0.1	0.1	23	33	319	258
NY	2.0	2.0	354	371	182	188
NC	882.2	1,016.7	227,823	267,550	259	264
ND	11.0	8.4	2,768	2,181	251	259
OH	80.9	91.9	22,097	25,290	274	276
OK	380.7	417.4	104,744	116,502	275	279
OR	16.0	13.9	3,699	3,590	232	260
PA	225.1	231.8	56,498	59,100	252	255
SC						
SD	321.0	386.4	83,753	98,838	261	256
TN	47.4	48.9	22,407	23,268	473	476
TX	33.9	36.7	8,133	9,677	240	264
UT	3.2	3.3	570	593	178	181
VA	173.3	218.1	45,176	57,495	261	264
WA	1.9	2.3	398	418	206	184
WV	0.5	0.5	139	158	291	307
WI	39.5	46.3	17,486	20,565	451	450
WY	0.4	0.4	106	101	266	274
US <sup>3</sup>	8,117.3	9,378.1	2,183,764	2,534,773	269	271

<sup>1</sup> Includes slaughter under Federal inspection and other Commercial slaughter, excludes farm slaughter.

<sup>2</sup> N ENG includes CT, ME, MA, NH, RI, and VT.

<sup>3</sup> States with no data printed are still included in the US total, data not printed to avoid disclosing individual operations. Accumulated totals and percentages based on unrounded data.

**Commercial Sheep and Lamb Slaughter: By State and United States,  
February 2007 and 2008<sup>1</sup>**

State	Number Slaughtered		Total Live Weight		Average Live Weight	
	2007	2008	2007	2008	2007	2008
	<i>1,000 Head</i>	<i>1,000 Head</i>	<i>1,000 Pounds</i>	<i>1,000 Pounds</i>	<i>Pounds</i>	<i>Pounds</i>
AL						
AK						
AZ		0.1		8		104
AR						
CA						
CO	87.7	90.2	13,473	14,014	154	156
DE-MD	2.2	2.4	220	243	101	102
FL	0.2	0.1	9	6	56	59
GA	0.3	0.3	41	26	120	94
HI						
ID	0.3	0.3	34	35	123	126
IL						
IN	1.3	1.7	146	187	112	112
IA	32.7	32.7	5,001	5,117	153	157
KS	0.2	0.1	19	13	108	107
KY	0.7	0.7	85	94	126	126
LA	0.3	0.3	35	31	101	90
MI	12.6	15.9	1,684	2,159	135	136
MN	0.2	0.9	22	118	118	132
MS						
MO	0.3	0.3	38	36	121	117
MT	0.3	0.2	31	25	111	113
NE		0.1		16		143
NV	0.1		6		127	
N ENG <sup>2</sup>	1.8	1.3	194	141	111	108
NJ	7.1	8.4	575	717	80	85
NM	0.9	1.4	117	201	131	143
NY	2.6	2.1	209	175	80	82
NC	0.4	0.5	31	46	85	84
ND						
OH	0.7	0.7	77	77	111	106
OK		0.1		6		101
OR	1.5	2.0	196	283	131	139
PA	3.0	3.5	285	356	96	101
SC						
SD	1.0	0.2	137	17	131	114
TN	0.9	0.9	71	73	79	78
TX	2.9	2.8	179	292	61	105
UT	2.6	2.6	358	366	137	140
VA	0.8	0.9	76	92	100	99
WA	0.4	0.6	59	79	145	139
WV						
WI	0.5	0.8	70	102	136	134
WY	0.1	0.1	15	15	150	145
US <sup>3</sup>	204.7	211.4	28,708	30,111	140	143

<sup>1</sup> Includes slaughter under Federal inspection and other Commercial slaughter, excludes farm slaughter.

<sup>2</sup> N ENG includes CT, ME, MA, NH, RI, and VT.

<sup>3</sup> States with no data printed are still included in the US total, data not printed to avoid disclosing individual operations. Accumulated totals and percentages based on unrounded data.

**Classification of Livestock Slaughtered Under Federal Inspection:  
United States**

Item	Feb 2007	Jan 2008	Feb 2008	Jan - Feb <sup>1</sup>		Feb 2007	Jan 2008	Feb 2008	Jan - Feb <sup>1</sup>	
				2007	2008				2007	2008
	<i>1,000 Head</i>	<i>1,000 Head</i>	<i>1,000 Head</i>	<i>1,000 Head</i>	<i>1,000 Head</i>	<i>Percent of Total</i>	<i>Percent of Total</i>	<i>Percent of Total</i>	<i>Percent of Total</i>	<i>Percent of Total</i>
Class <sup>2</sup>										
Cattle										
Steers	1,236	1,391	1,274	2,621	2,665	49.1	48.8	49.1	49.8	48.9
Heifers	803	867	818	1,622	1,685	31.9	30.5	31.5	30.8	31.0
All Cows	444	545	465	946	1,010	17.6	19.1	17.9	18.0	18.5
Dairy Cows	202	236	214	430	450	8.0	8.3	8.2	8.2	8.3
Other Cows	242	309	251	517	560	9.6	10.9	9.7	9.8	10.3
Bulls	35	45	40	77	85	1.4	1.6	1.5	1.5	1.6
Total <sup>1</sup>	2,518	*2,847	2,598	5,266	5,445	100.0	100.0	100.0	100.0	100.0
Calves & Vealers	66	70	68	139	138	100.0	100.0	100.0	100.0	100.0
Hogs										
Barrow & Gilts	7,757	10,128	8,992	16,712	19,119	96.5	96.7	96.7	96.5	96.7
Sows	248	304	270	533	574	3.1	2.9	2.9	3.1	2.9
Boars	35	42	35	76	78	0.4	0.4	0.4	0.4	0.4
Total <sup>1</sup>	8,040	10,474	9,297	17,321	19,771	100.0	100.0	100.0	100.0	100.0
Sheep										
Mature Sheep	8	9	8	17	18	4.0	4.5	4.2	4.2	4.3
Lambs & Yrlngs	187	193	193	382	386	96.0	95.5	95.8	95.8	95.7
Total <sup>1</sup>	194	202	201	399	403	100.0	100.0	100.0	100.0	100.0
Average Dressed Weight										
	<i>Pounds</i>	<i>Pounds</i>	<i>Pounds</i>	<i>Pounds</i>	<i>Pounds</i>					
Cattle	767	775	776	773	776					
Steers <sup>3</sup>	816	832	827	824	830					
Heifers <sup>3</sup>	760	773	773	766	773					
All Cows <sup>3</sup>	631	624	631	631	627					
Bulls <sup>3</sup>	905	878	885	907	882					
Calves & Vealers	183	159	160	188	159					
Hogs										
Barrow Gilts <sup>4</sup>	199	202	200	199	201					
Sows <sup>4</sup>	307	306	308	308	307					
Boars <sup>4</sup>	206	213	212	211	212					
Sheep										
Mature Sheep <sup>5</sup>	72	70	72	71	71					
Lamb & Yrlngs <sup>5</sup>	66	67	67	65	67					
Lamb & Yrlngs <sup>5</sup>	72	71	72	72	71					

\* Revised.

<sup>1</sup> Total and percentages based on unrounded data.

<sup>2</sup> Species totals and classification reported by food inspectors, Inspection Operations, FSIS.

<sup>3</sup> Included in cattle average dressed weight.

<sup>4</sup> Included in hog average dressed weight.

<sup>5</sup> Included in sheep average dressed weight.

**Federally Inspected Slaughter: By Region and United States,  
February 2008<sup>1</sup>**

Standard Federal Regions	Cattle							Calves
	Total <sup>2</sup>	Steers	Heifers	Cows			Bulls	Total
				All	Dairy	Other		
	<i>1,000 Head</i>	<i>1,000 Head</i>	<i>1,000 Head</i>	<i>1,000 Head</i>	<i>1,000 Head</i>	<i>1,000 Head</i>	<i>1,000 Head</i>	<i>1,000 Head</i>
1	0.8	0.3	0.2					0.2
2	4.4	1.6	0.3	2.2	1.8	0.4	0.3	19.7
3	75.6	30.3	9.6	34.2	27.2	7.0	1.5	14.1
4	65.3	1.4	0.4	55.0	12.7	42.4	8.5	0.3
5	309.6	136.7	40.3	126.0	67.0	59.0	6.6	14.3
6	498.4	264.6	153.1	70.3	16.2	54.1	10.4	2.3
7	1,092.4	576.6	448.2	61.0	1.6	59.3	6.6	
8	269.6	133.9	116.7					
9	174.0	88.2	11.6	72.2	66.5	5.7	2.0	15.4
10	107.9	40.8	37.9	26.6	14.7	11.9	2.7	
US <sup>2</sup>	2,598.0	1,274.3	818.3	465.1	214.3	250.8	40.3	67.9
	Hogs				Sheep			
	Total <sup>2</sup>	Barrows & Gilts	Sows	Boars	Total <sup>2</sup>	Mature Sheep	Lambs & Yearlings	
	<i>1,000 Head</i>	<i>1,000 Head</i>	<i>1,000 Head</i>	<i>1,000 Head</i>	<i>1,000 Head</i>	<i>1,000 Head</i>	<i>1,000 Head</i>	<i>1,000 Head</i>
1	0.9	0.8			1.3	0.1		1.2
2	9.8	9.6	0.1	0.1	9.9	1.0		8.9
3	449.9	436.8	2.3	10.8	6.7	0.2		6.5
4	1,372.6	1,304.5	66.4	1.8	2.5	0.8		1.8
5	2,456.1	2,338.5	114.4	3.2	27.9	2.7		25.2
6	460.9	436.5	23.1	1.2				
7	3,918.6	3,837.0	63.2	18.3	33.0	0.2		32.7
8	396.6	396.0	0.6		92.4	1.6		90.7
9	203.9	203.9						
10	28.1	28.0	0.1		2.1	0.1		2.0
US <sup>2</sup>	9,297.4	8,991.6	270.3	35.5	201.4	8.4		193.0

<sup>1</sup> States included in regions are as follows: 1- CT, ME, NH, VT, MA, & RI; 2- NY & NJ; 3- DE-MD, PA, WV, & VA; 4- AL, FL, GA, KY, MS, NC, SC, & TN; 5- IL, IN, MI, MN, OH, & WI; 6- AR, LA, NM, OK, & TX; 7- IA, KS, MO, & NE; 8- CO, MT, ND, SD, UT, & WY; 9- AZ, CA, HI & NV; 10- AK, ID, OR, & WA.

<sup>2</sup> Regions with no data printed are still included in the US and Region total, data not printed to avoid disclosing individual operations. Totals may not add due to rounding.

**Federally Inspected Slaughter: By Region and United States,  
January - February 2008<sup>1</sup>**

Standard Federal Regions	Cattle							Calves
	Total <sup>2</sup>	Steers	Heifers	Cows			Bulls	Total
				All	Dairy	Other		
	<i>1,000 Head</i>	<i>1,000 Head</i>	<i>1,000 Head</i>	<i>1,000 Head</i>	<i>1,000 Head</i>	<i>1,000 Head</i>	<i>1,000 Head</i>	<i>1,000 Head</i>
1	1.8	0.8	0.4					0.5
2	9.1	3.4	0.6	4.4	3.8	0.7	0.7	43.7
3	162.5	66.3	17.5	75.2	59.7	15.6	3.5	28.4
4	140.2	2.9	0.9	118.8	26.1	92.8	17.6	0.6
5	649.5	271.4	82.6	281.7	145.4	136.2	13.8	28.7
6	1,023.4	531.1	315.7	154.5	31.3	123.2	22.1	3.6
7	2,327.7	1,253.7	928.3	132.0	3.3	128.7	13.7	0.1
8	545.1	268.8	237.0					
9	359.6	178.7	23.3	152.8	140.8	12.0	4.8	30.2
10	226.7	88.0	79.0	54.1	26.9	27.2	5.6	
US <sup>2</sup>	5,445.4	2,664.9	1,685.5	1,009.7	450.0	559.8	85.3	138.3
	Hogs				Sheep			
	Total <sup>2</sup>	Barrows & Gilts	Sows	Boars	Total <sup>2</sup>	Mature Sheep	Lambs & Yearlings	
	<i>1,000 Head</i>	<i>1,000 Head</i>	<i>1,000 Head</i>	<i>1,000 Head</i>	<i>1,000 Head</i>	<i>1,000 Head</i>	<i>1,000 Head</i>	
1	1.9	1.9			3.2	0.2	3.0	
2	21.8	21.3	0.3	0.2	20.8	2.0	18.8	
3	941.7	912.6	4.5	24.5	14.1	0.5	13.6	
4	2,835.6	2,682.3	149.4	4.0	5.4	1.6	3.7	
5	5,265.6	5,015.8	242.5	7.4	58.8	5.8	53.0	
6	965.0	913.4	48.8	2.8				
7	8,345.7	8,179.3	127.4	39.0	65.2	0.5	64.7	
8	901.0	900.0	1.0		179.6	3.2	176.4	
9	432.6	432.4						
10	60.7	60.4	0.2		4.0	0.3	3.7	
US <sup>2</sup>	19,771.5	19,119.3	574.2	78.0	403.1	17.5	385.6	

<sup>1</sup> States included in regions are as follows: 1- CT, ME, NH, VT, MA, & RI; 2- NY & NJ; 3- DE-MD, PA, WV, & VA; 4- AL, FL, GA, KY, MS, NC, SC, & TN; 5- IL, IN, MI, MN, OH, & WI; 6- AR, LA, NM, OK, & TX; 7- IA, KS, MO, & NE; 8- CO, MT, ND, SD, UT, & WY; 9- AZ, CA, HI & NV; 10- AK, ID, OR, & WA.

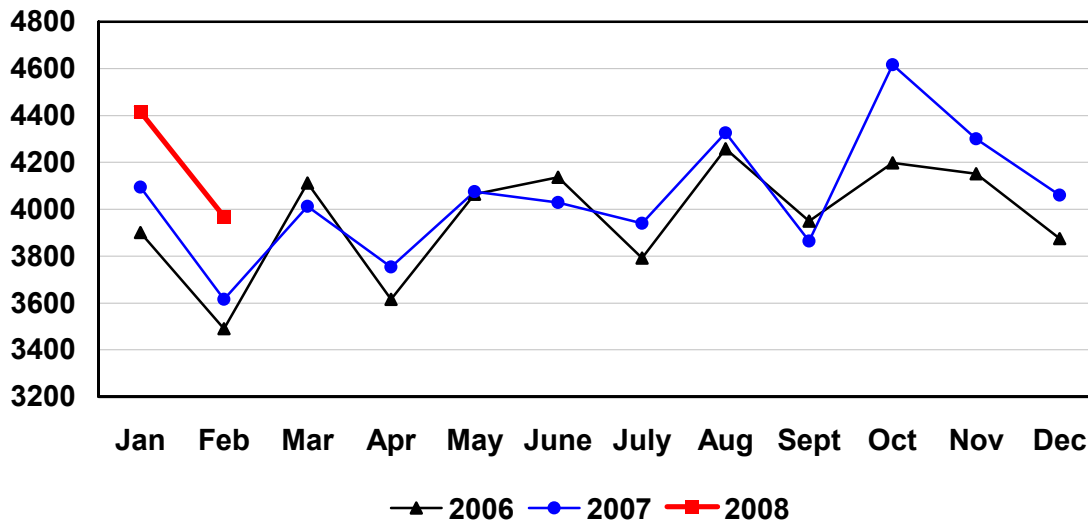
<sup>2</sup> Regions with no data printed are still included in the US and Region total, data not printed to avoid disclosing individual operations. Totals may not add due to rounding.

**Federally Inspected Slaughter: Percent of Total Commercial Slaughter by Species, United States**

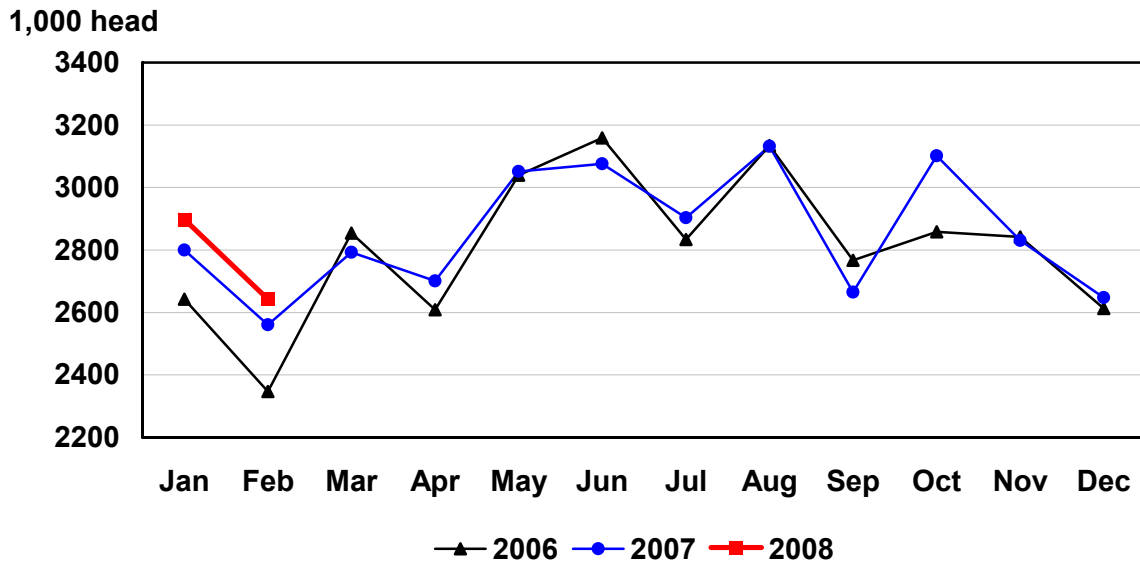
Species	Feb 2007	Jan 2008	Feb 2008	Jan - Feb	
				2007	2008
	<i>Percent</i>	<i>Percent</i>	<i>Percent</i>	<i>Percent</i>	<i>Percent</i>
Cattle	98.3	98.2	98.3	98.2	98.3
Calves	98.3	98.5	98.3	98.4	98.4
Hogs	99.0	99.2	99.1	99.1	99.2
Sheep	94.9	94.5	95.3	95.0	94.9

## U.S. Monthly Commercial Red Meat Production

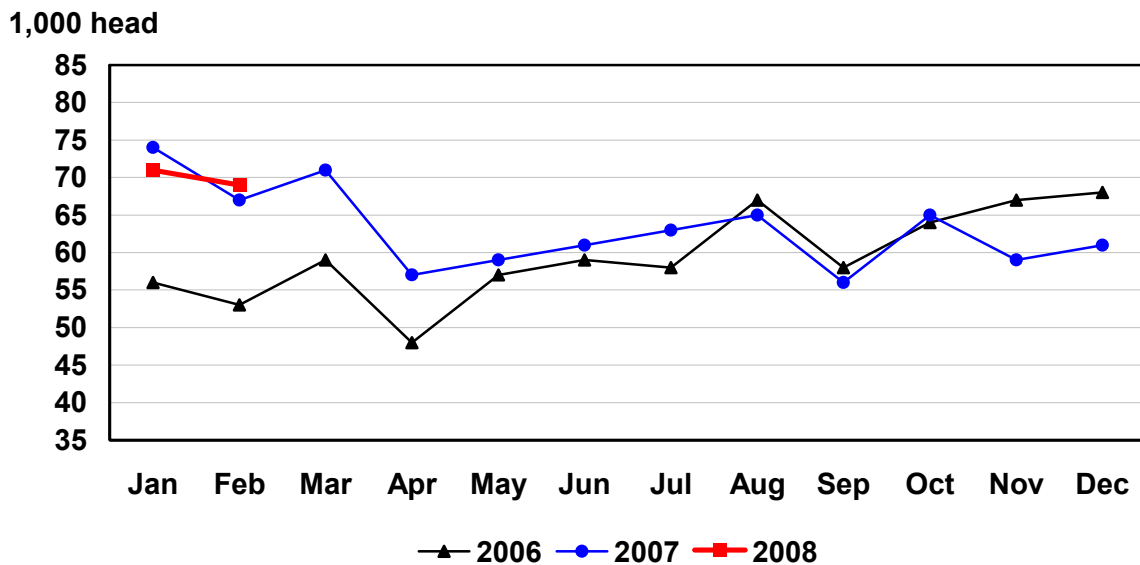
Million Pounds



# U.S. Monthly Commercial Slaughter Cattle

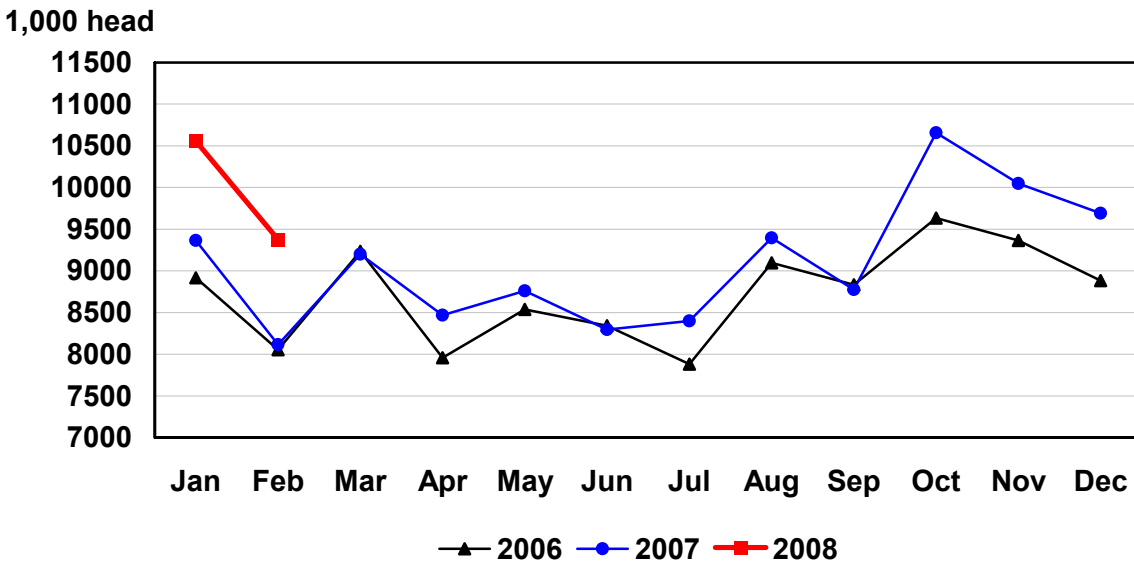


# U.S. Monthly Commercial Slaughter Calves

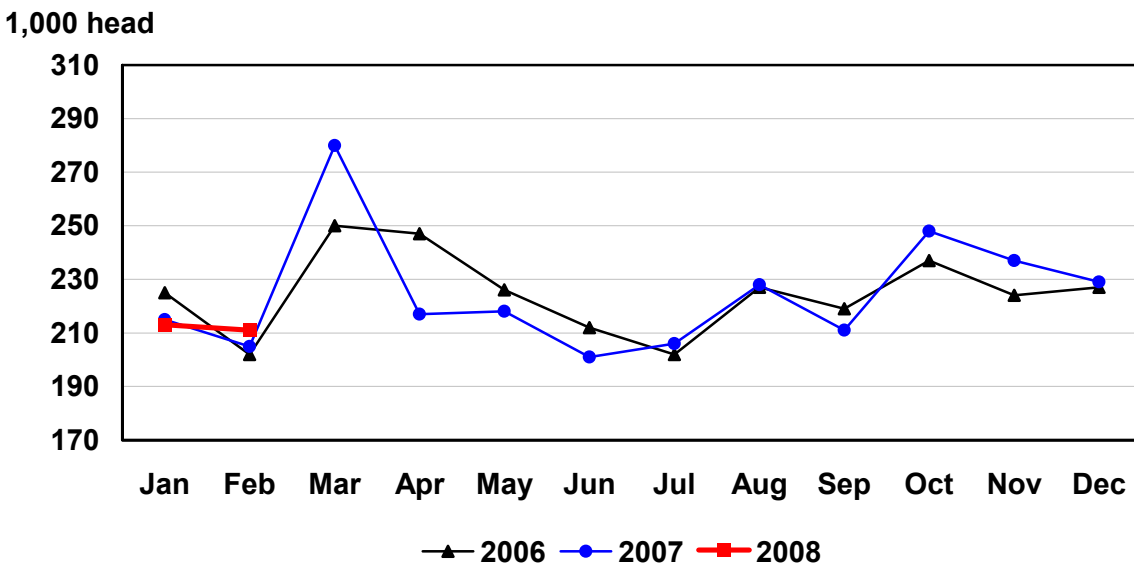




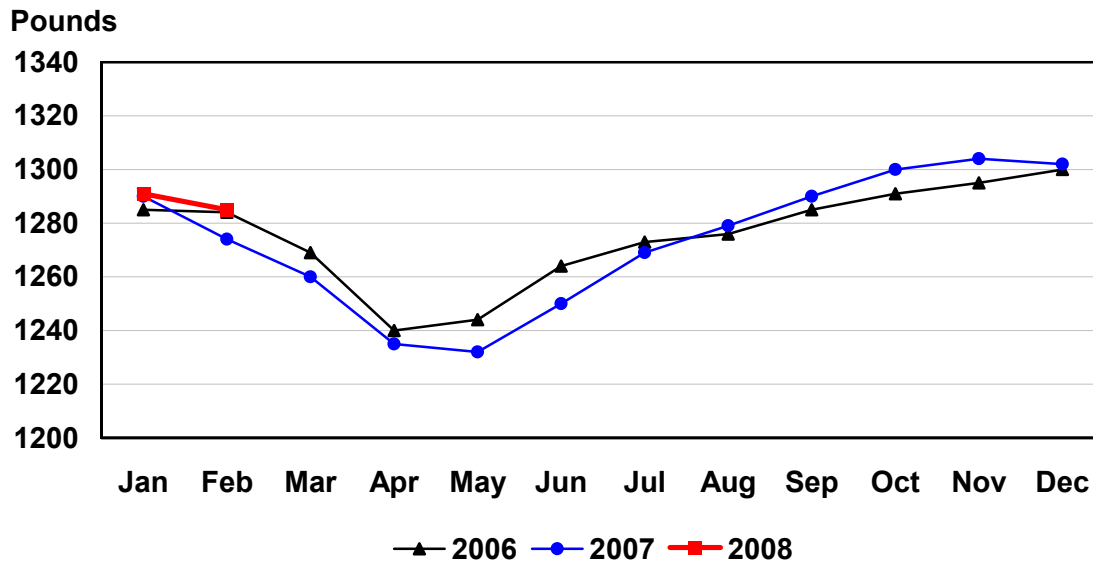
# U.S. Monthly Commercial Slaughter Hogs



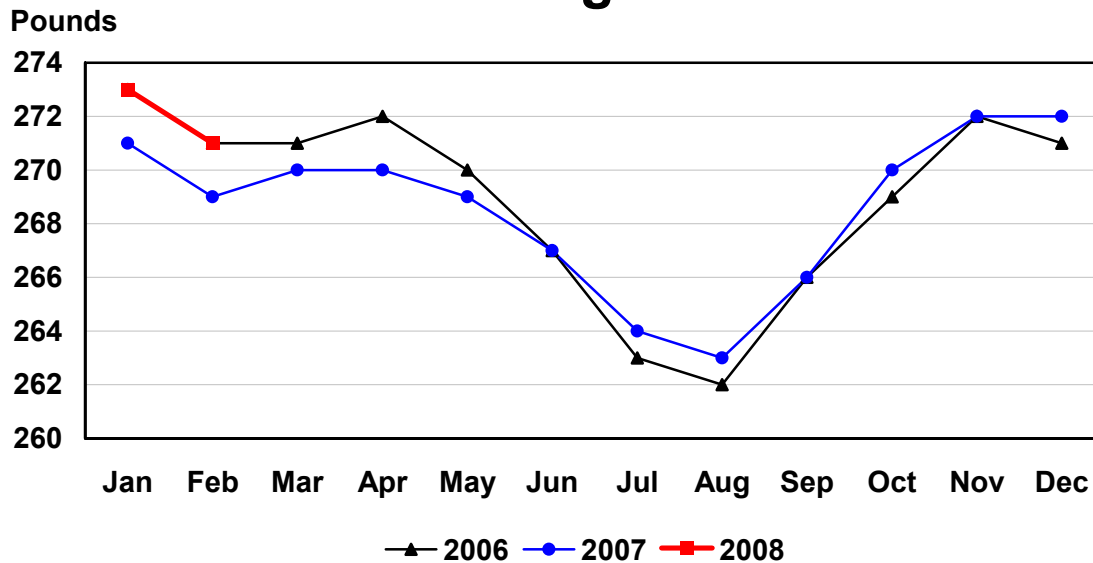
# U.S. Monthly Commercial Slaughter Sheep



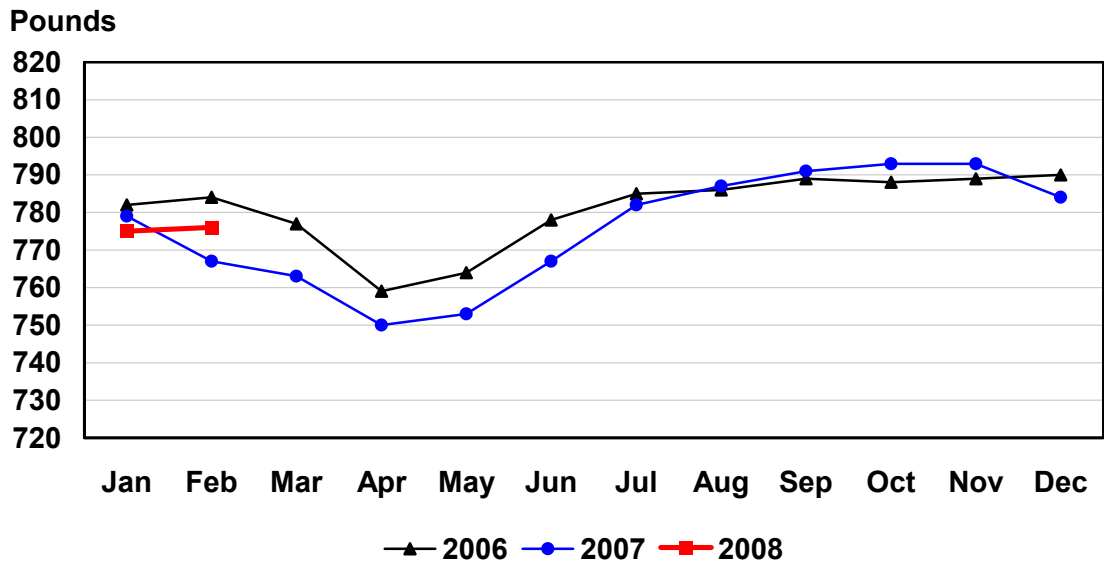
# U.S. Monthly Commercial Slaughter Average Live Weight Cattle



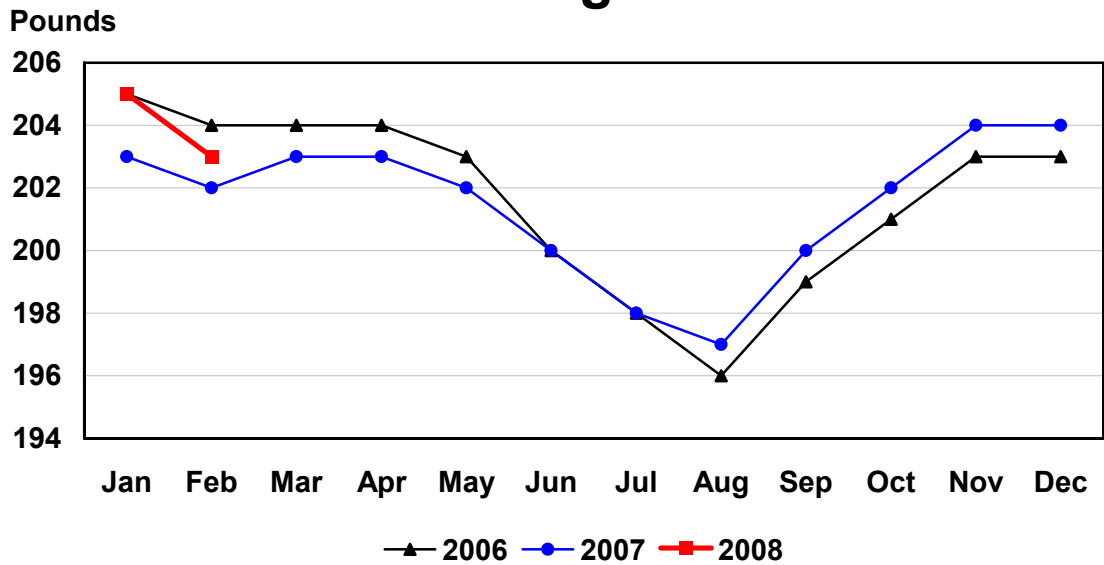
# U.S. Monthly Commercial Slaughter Average Live Weight Hogs



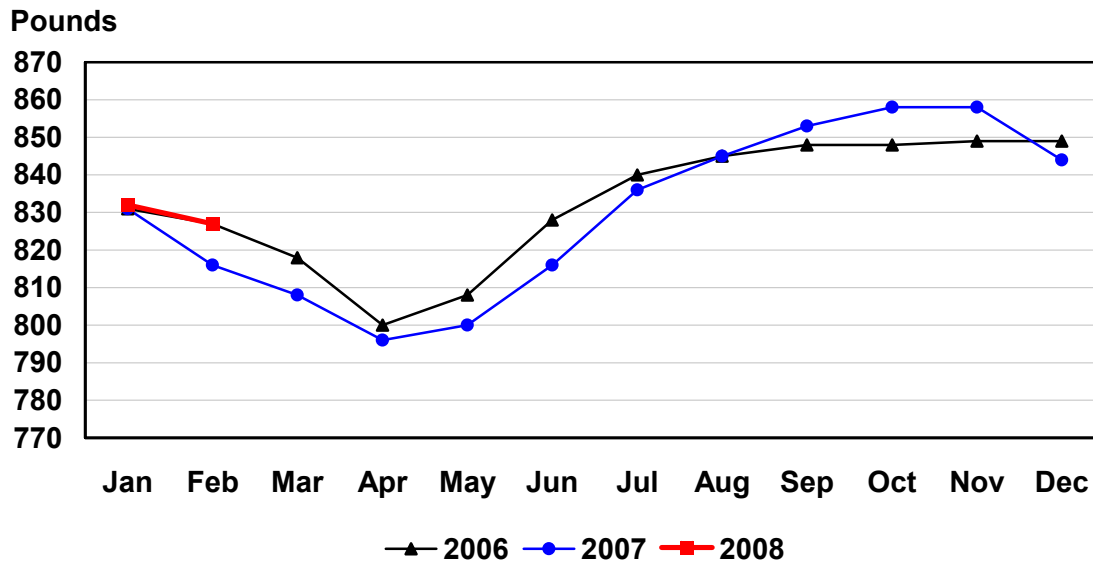
# U.S. Monthly Federally Inspected Average Dressed Weight Cattle



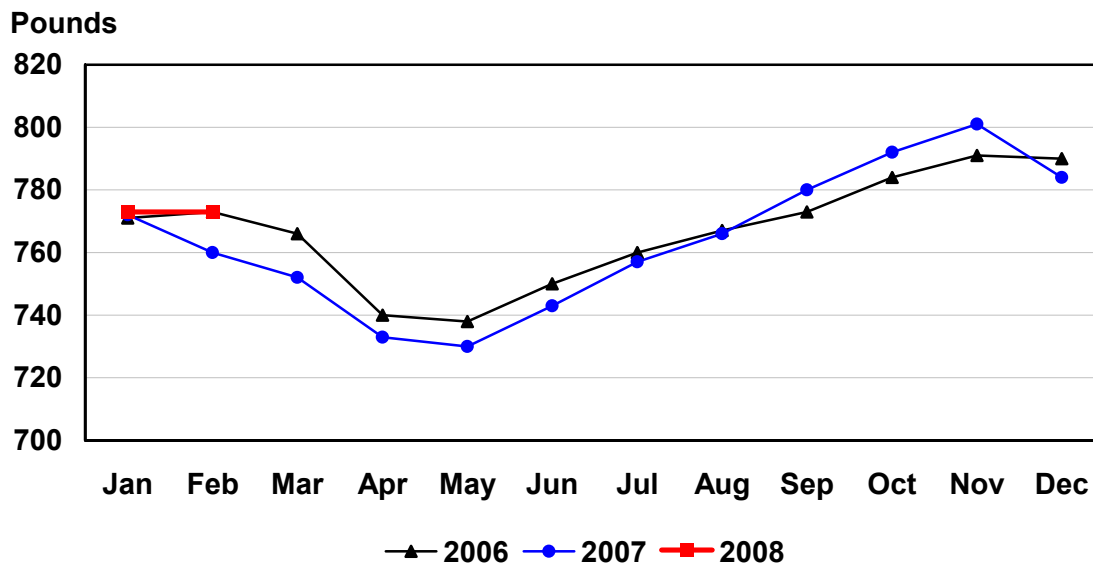
# U.S. Monthly Federally Inspected Average Dressed Weight Hogs



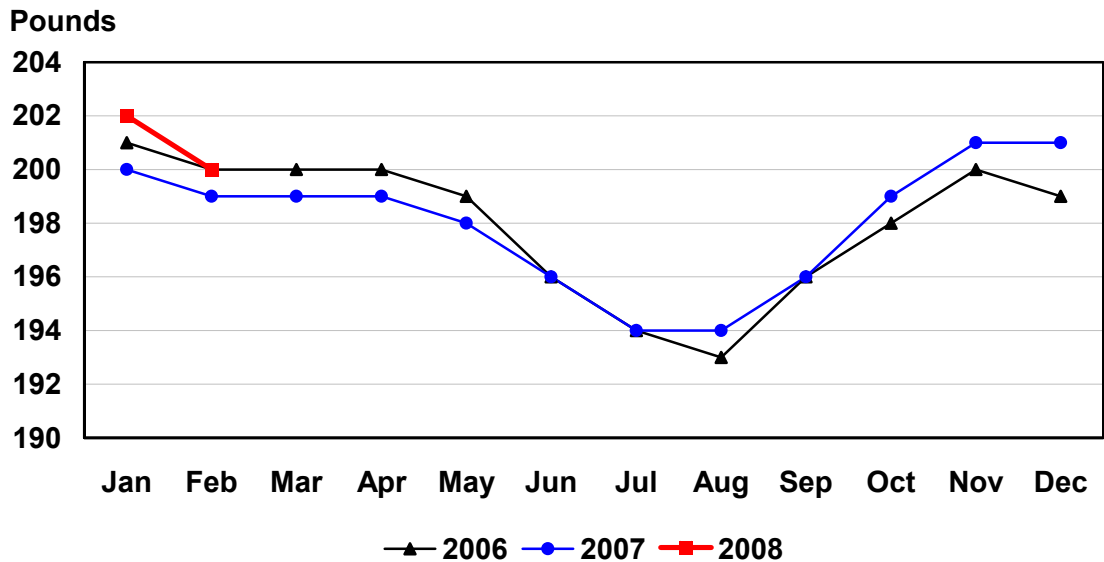
# U.S. Monthly Federally Inspected Average Dressed Weight Steers



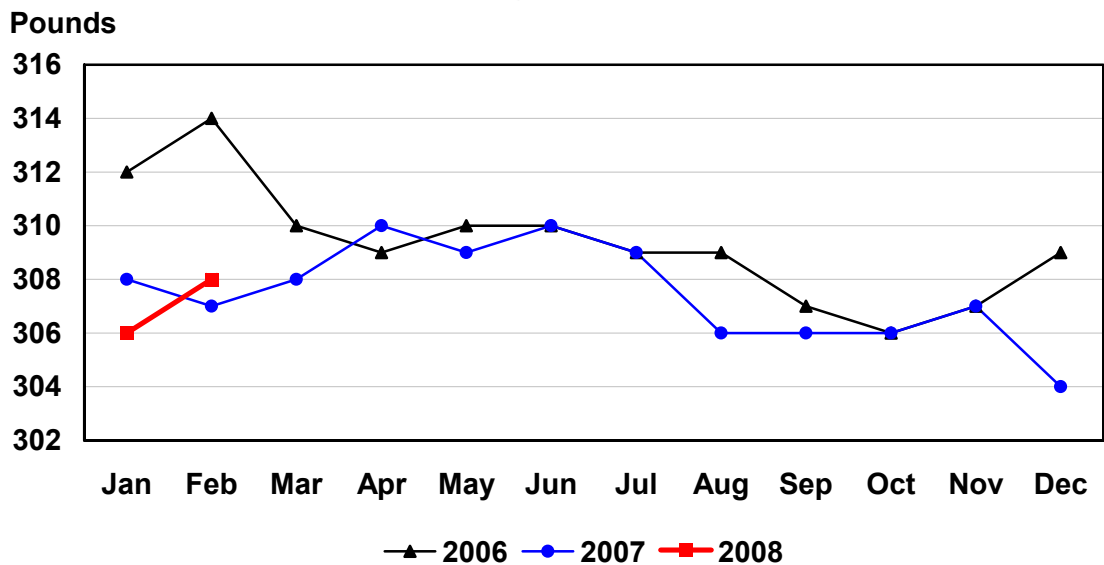
# U.S. Monthly Federally Inspected Average Dressed Weight Heifers



## U.S. Monthly Federally Inspected Average Dressed Weight Barrows and Gilts



## U.S. Monthly Federally Inspected Average Dressed Weight Sows



## Reliability of Livestock Slaughter Estimates

**Data Sources:** Primary data for the commercial livestock slaughter estimates are obtained from electronic reports completed by inspectors from the Food Safety and Inspection Service (FSIS), USDA, which provide daily counts of animals slaughtered in Federally Inspected (FI) plants, in addition to total live and dressed weights. These counts are combined with data from State-administered Non-Federally Inspected (NFI) slaughter plants to derive total commercial slaughter estimates. More than 95 percent of the total U.S. slaughter for any species is under Federal Inspection.

There are nearly 800 livestock slaughter plants in the U.S. operating under Federal Inspection and over 2,000 Non-Federally Inspected (State-inspected or custom-exempt) slaughter plants. Slaughter from State-inspected Talmadge-Aiken plants is included in FI totals (see Types of Plants, page 20). To prevent duplication in reporting between FI and NFI plants and assure all FI plants are included, certificates prepared by FSIS identifying operating status are constantly monitored

**Revision Policy:** Number of head slaughtered, live weights, and dressed weights are subject to revision the following month after the monthly release. Annual totals are published in the slaughter summary each March which includes any revisions made to current and previous year's published data. Revisions are generally the result of late reports received from slaughter plants and are usually less than one-half of one percent. No revisions will be made to the previous year's data after the publication of the annual summary in March.

**Procedures and Reliability:** The livestock slaughter data is obtained electronically on a daily basis and summarized approximately two weeks after the week of slaughter. An edit compares each plant's data with the historical data for that plant. Data are checked for unusual values for head kill, patterns of kill, average weights, and dressing percent, based on each plant's past operating profile. In addition, the edit provides a listing of missing reports for follow-up contact with FSIS. Average live and dressed weights and dressing percentages by State are compared with the previous weeks as an additional check. Fluctuations are frequently the result of plants permanently or temporarily closing and a shift in the species reported.

The FSIS District Veterinary Medical Specialists (DVMS) are contacted by e-mail or telephone for missing or potentially erroneous slaughter data. This assures that plants slaughtering a large number of head or several species are accounted for each week. Any corrections FSIS makes to the slaughter data are included in the summary.

Imputation may be necessary for incomplete reports. The imputation of live and dressed weights is based on the current week reported data of plants of similar size and location. Imputation for live and dressed weight data for cattle and hogs is less than 10 percent and 7 percent, respectively. The imputation for calves and sheep is more frequent and variable. If no data is received electronically or by other means, for plants slaughtering fewer than 50 total head weekly of only one species, data are imputed. The imputation of head for any plant is based on the historical data for that particular plant. The imputation of head slaughtered is rare but when necessary, the imputed head kill for missing plants usually is less than 1 percent of the U.S. head kill totals.

FI data are summarized weekly and accumulated to a monthly total for this release. These weekly totals are published by USDA's Agricultural Marketing Service (AMS) in **Livestock, Meat, Wool Market News**, Weekly Summary, and Statistics and are also available on the NASS website. NFI data are summarized monthly only.

Livestock slaughter estimates are based on a census of operating plants and therefore, have no sampling error. However, they may be subject to errors such as omissions, duplications and mistakes in reporting, recording and processing the data. These errors are minimized through rigid quality controls in the edit and summarization process, and a careful review of all reported data for consistency and reasonableness.

No data are published when an individual plant's data could be divulged. If not published, these data are still included in US and region totals. A review of the data is made annually to determine the publishable data.

### **Types of Livestock Slaughter Plants**

There are generally **four types** of slaughtering plants.

- (1) **Federally Inspected (FI) Plants:** Plants that transport meat interstate must employ federal inspectors to assure compliance with USDA standards. Any State whose commercial plants operate entirely under federal inspection may still have custom-exempt establishments for which NFI estimates are made.
- (2) **Talmedge-Aiken (TA) Plants:** Slaughter plants in which USDA is responsible for inspection. However, federal inspection is carried out by State employees. These plants are considered to be federally inspected.
- (3) **Non-Federally Inspected (NFI) Plants:** Plants which sell and transport only intrastate. State inspectors assure compliance with individual State standards for these NFI plants. Mobile slaughtering units are excluded and are considered farm slaughter.
- (4) **Custom-Exempt Plants:** Plants that do not sell meat but operate on a custom basis only are custom-exempt. The animals and meat are not inspected, but the facilities must meet health standards. These are considered NFI plants and head kill is included in NFI totals.

## Terms and Definitions Used for Livestock Slaughter Estimates

**Average Live Weight:** Excludes post-mortem condemnations

**Commercial Production:** Includes slaughter and meat production in federally inspected and other plants, but excludes animals slaughtered on farms.

**Dressed Weight:** The weight of a chilled animal carcass. Beef with kidney knob in; veal with hide off; lamb and mutton with pluck out; pork with leaf fat and kidneys out, jowls on and head off.

**Dressing Percent:** Usually expressed as a percentage yield of chilled carcass in relation to the weight of the live animal on hoof. For example, a live hog that weighed 200 pounds on hoof and yielded a carcass weighing 140 pounds would have a dressing percentage of 70.

**Food and Meat Inspection:** Includes examination, checking, or testing of a carcass and/or meat against established government standards and involves checking the facility for cleanliness, health of animals, or parts of animals and quality of the meat produced.

**Number of Head:** Includes post-mortem condemnations.

**Plant, Slaughter:** An establishment where animals are killed and butchered.

**Red Meat:** Red meat production is the carcass weight after slaughter excluding condemnation and is comprised of beef, veal, pork, and lamb and mutton. The FI red meat production is equal to the total carcass weight after slaughter. The NFI meat production formula is (NFI head kill) X (live weight) X (FI dressing percentage) = NFI red meat production.

**Slaughter:** Killing and butchering of animals primarily for food.

**Slaughter, Farm:** Animals slaughtered on farms primarily for home consumption. Excludes custom slaughter for farmers at commercial establishments, but includes mobile slaughtering on farms. These estimates appear only in the annual slaughter release.

**Total Live Weight:** Excludes post-mortem condemnations.

**Wholesome Meat Act:** Legislation that specifies that all meat produced for sale in the U.S. must be inspected. Meat that is transported interstate must be inspected in compliance with Federal (USDA) Standards.

### Information Contacts

Listed below are the commodity specialists in the Livestock Branch of the National Agricultural Statistics Service to contact for additional information.

Dan Kerestes, Chief, Livestock Branch .....	(202) 720-3570
Scott Hollis, Head, Livestock Section.....	(202) 690-2424
Bruce Boess – Hogs and Pigs .....	(202) 720-3106
Jim Collom – Dairy Products .....	(202) 690-3236
Joe Gaynor – Dairy Products Prices.....	(202) 690-2168
Jason Hardegree – Milk Production and Milk Cows .....	(202) 720-3278
Benita Hodge – Livestock Slaughter.....	(515) 284-4340
Scott Hollis – Sheep and Goats.....	(202) 690-2424
Mike Miller – Cattle, Cattle on Feed.....	(202) 720-3040



## ACCESS TO REPORTS!!

---

For your convenience, there are several ways to obtain NASS reports, data products, and services:

### INTERNET ACCESS

All NASS reports are available free of charge on the worldwide Internet. For access, connect to the Internet and go to the NASS Home Page at: [www.nass.usda.gov](http://www.nass.usda.gov).

### E-MAIL SUBSCRIPTION

All NASS reports are available by subscription free of charge direct to your e-mail address. Starting with the NASS Home Page at [www.nass.usda.gov](http://www.nass.usda.gov), under the right navigation, *Receive reports by Email*, click on **National** or **State**. Follow the instructions on the screen.

-----

### PRINTED REPORTS OR DATA PRODUCTS

**CALL OUR TOLL-FREE ORDER DESK: 800-999-6779 (U.S. and Canada)**  
**Other areas, please call 703-605-6220      FAX: 703-605-6900**  
**(Visa, MasterCard, check, or money order acceptable for payment.)**

-----

### ASSISTANCE

For **assistance** with general agricultural statistics or further information about NASS or its products or services, contact the **Agricultural Statistics Hotline** at **800-727-9540**, 7:30 a.m. to 4:00 p.m. ET, or e-mail: [nass@nass.usda.gov](mailto:nass@nass.usda.gov).

The U.S. Department of Agriculture (USDA) prohibits discrimination in all its programs and activities on the basis of race, color, national origin, age, disability, and where applicable, sex, marital status, familial status, parental status, religion, sexual orientation, genetic information, political beliefs, reprisal, or because all or part of an individual's income is derived from any public assistance program. (Not all prohibited bases apply to all programs.) Persons with disabilities who require alternative means for communication of program information (Braille, large print, audiotape, etc.) should contact USDA's TARGET Center at (202) 720-2600 (voice and TDD).

To file a complaint of discrimination, write to USDA, Director, Office of Civil Rights, 1400 Independence Avenue, S.W., Washington, D.C. 20250-9410, or call (800) 795-3272 (voice) or (202) 720-6382 (TDD). USDA is an equal opportunity provider and employer.