

Livestock Slaughter

Released July 25, 2008, by the National Agricultural Statistics Service (NASS), Agricultural Statistics Board, U.S. Department of Agriculture. For information on *Livestock Slaughter* call Benita Hodge at (515) 284-4340, office hours 7:00 a.m. to 4:00 p.m. CT.

Pork Production Stays above Previous Year in June

Commercial red meat production for the United States totaled 4.05 billion pounds in June, up 1 percent from the 4.03 billion pounds produced in June 2007.

Beef production, at 2.26 billion pounds, was 4 percent below the previous year. Cattle slaughter totaled 2.96 million head, down 4 percent from June 2007. The average live weight was up 11 pounds from the previous year, at 1,261 pounds.

Veal production totaled 11.7 million pounds, 5 percent above June a year ago. Calf slaughter totaled 75,400 head, up 23 percent from June 2007. The average live weight was down 41 pounds from last year, at 266 pounds.

Pork production totaled 1.76 billion pounds, up 7 percent from the previous year. Hog kill totaled 8.88 million head, up 7 percent from June 2007. The average live weight was down 1 pound from the previous year, at 266 pounds.

Lamb and mutton production, at 13.1 million pounds, was down 4 percent from June 2007. Sheep slaughter totaled 192,400 head, 4 percent below last year. The average live weight was 137 pounds, unchanged from June a year ago.

January to June 2008 commercial red meat production was 25.0 billion pounds, up 6 percent from 2007. Accumulated beef production was up 3 percent from last year, veal was down 9 percent, pork was up 10 percent from last year, and lamb and mutton production was down 4 percent.

June 2007 contained 21 weekdays (including no holidays) and 5 Saturdays.

June 2008 contained 21 weekdays (including no holidays) and 4 Saturdays.

Contents

	Page
Red Meat Production, Commercial and FI, by Type, U.S.	1
Livestock Slaughter, Number and Average Weights, by Species and Type of Slaughter, U.S.	2
Commercial Red Meat Production, by State and U.S.	3
Commercial Cattle Slaughter, Number, Total and Average Live Weight, by State and U.S.	4
Commercial Calf Slaughter, Number, Total and Average Live Weight, by State and U.S.	5
Commercial Hog Slaughter, Number, Total and Average Live Weight, by State and U.S.	6
Commercial Sheep and Lamb Slaughter, Number, Total and Average Live Weight, by State and U.S.	7
Federally Inspected Classification of Number and Average Dressed Weight, by Species and Class and U.S.	8
Federally Inspected Slaughter by Species and Class, by Region and U.S.	9
Federally Inspected Percent of Total Commercial, by Species, U.S.	11
Reliability Statement.....	18
Types of Plants.....	19
Terms and Definitions	20
Information Contacts	20

Commercial Red Meat Production: United States ¹

Type	Jun 2007	May 2008	Jun 2008	Jun 08 % of		Jan - Jun ²		
				Jun 2007	May 2008	2007	2008	08 as % of 07
	<i>Million Pounds</i>	<i>Million Pounds</i>	<i>Million Pounds</i>	<i>Percent</i>	<i>Percent</i>	<i>Million Pounds</i>	<i>Million Pounds</i>	<i>Percent</i>
Beef	2,348.5	*2,380.2	2,262.6	96	95	12,885.5	13,268.6	103
Veal	11.2	11.5	11.7	105	102	75.3	68.7	91
Pork	1,654.1	1,815.6	1,762.1	107	97	10,524.1	11,616.4	110
Lamb & Mutton	13.7	15.0	13.1	96	88	93.3	89.3	96
Total Red Meat ³	4,027.5	4,222.3	4,049.6	101	96	23,578.3	25,043.0	106

* Revised.

¹ Based on packers' dressed weights and excludes farm slaughter.

² Accumulated totals and percentages based on unrounded data.

³ Totals may not equal sum of the parts due to rounding.

Federally Inspected Red Meat Production: United States ¹

Type	Jun 2007	May 2008	Jun 2008	Jun 08 % of		Jan - Jun ²		
				Jun 2007	May 2008	2007	2008	08 as % of 07
	<i>Million Pounds</i>	<i>Million Pounds</i>	<i>Million Pounds</i>	<i>Percent</i>	<i>Percent</i>	<i>Million Pounds</i>	<i>Million Pounds</i>	<i>Percent</i>
Beef	2,321.8	*2,351.2	2,234.2	96	95	12,711.6	13,090.4	103
Veal	11.0	11.2	11.5	105	102	73.9	67.2	91
Pork	1,641.2	*1,801.7	1,747.9	107	97	10,442.5	11,530.1	110
Lamb & Mutton	13.1	14.4	12.5	95	87	89.7	85.6	95
Total Red Meat ³	3,987.1	4,178.5	4,006.2	100	96	23,317.6	24,773.4	106

* Revised.

¹ Based on packers' dressed weights and excludes farm slaughter.

² Accumulated totals and percentages based on unrounded data.

³ Totals may not equal sum of the parts due to rounding.

Livestock Slaughter: Number and Average Weights, United States ¹

Species	Unit	Jun 2007	May 2008	Jun 2008	Jun 08 % of		Jan - Jun ²		08 % of 07
					Jun 2007	May 2008	2007	2008	
					<i>Percent</i>	<i>Percent</i>			<i>Prent</i>
Cattle No.									
Fed. Insp.	Thou	3,035.0	3,095.0	2,911.6	96	94	16,716.1	17,049.3	102
Other	Thou	41.5	44.7	43.9	106	98	267.6	275.1	103
Comm'l. ³	Thou	3,076.5	3,139.7	2,955.5	96	94	16,983.7	17,324.4	102
Live Wt/Hd									
Fed. Insp.	Lbs	1,251	1,253	1,263	101	101	1,258	1,272	101
Other	Lbs	1,128	1,143	1,136	101	99	1,144	1,145	100
Comm'l.	Lbs	1,250	1,251	1,261	101	101	1,256	1,270	101
Calves No.									
Fed. Insp.	Thou	60.3	70.0	74.2	123	106	382.6	424.6	111
Other	Thou	0.9	1.1	1.2	122	106	6.2	6.7	108
Comm'l. ³	Thou	61.3	71.1	75.4	123	106	388.9	431.3	111
Live Wt/Hd									
Fed. Insp.	Lbs	306	*274	265	86	97	324	270	83
Other	Lbs	359	398	377	105	95	399	399	100
Comm'l.	Lbs	307	275	266	87	97	325	272	84
Hogs No.									
Fed. Insp.	Thou	8,217.9	*8,980.4	8,800.5	107	98	51,727.1	57,042.2	110
Other	Thou	79.3	82.4	84.3	106	102	482.4	496.9	103
Comm'l. ³	Thou	8,297.2	*9,062.8	8,884.7	107	98	52,209.5	57,539.1	110
Live Wt/Hd									
Fed. Insp.	Lbs	267	268	266	100	99	270	270	100
Other	Lbs	226	235	233	103	99	234	240	103
Comm'l.	Lbs	267	268	266	100	99	269	270	100
Sheep&Lambs No.									
Fed. Insp.	Thou	188.3	*195.1	180.7	96	93	1,261.7	1,205.4	96
Other	Thou	12.3	11.6	11.7	95	101	73.0	70.9	97
Comm'l. ³	Thou	200.6	*206.7	192.4	96	93	1,334.7	1,276.3	96
Live Wt/Hd									
Fed. Insp.	Lbs	139	148	139	100	94	142	142	100
Other	Lbs	100	106	107	107	101	101	105	104
Comm'l.	Lbs	137	146	137	100	94	140	140	101
Goats No.									
Fed. Insp.	Thou	53.2	*52.6	53.5	101	102	298.1	311.1	104
Other	Thou	16.8	16.4	16.2	96	99	90.7	91.4	101
Comm'l. ³	Thou	70.1	*69.0	69.8	100	101	388.8	402.5	104
Live Wt/Hd									
Fed. Insp.	Lbs	61	62	61	100	100	61	62	101
Other	Lbs	52	59	58	113	99	60	64	106
Comm'l.	Lbs	59	61	61	103	99	61	62	102
Bison No.									
Fed. Insp.	Thou	4.3	4.7	4.8	111	102	25.1	28.9	115
Other	Thou	1.3	1.1	1.3	99	112	9.2	8.3	90
Comm'l. ³	Thou	5.6	5.8	6.1	108	104	34.3	37.2	109

* Revised.

¹ Excludes slaughter on farms.

² Accumulated totals and percentages based on unrounded data.

³ Totals may not equal sum of the parts due to rounding.

Commercial Red Meat Production: By State and United States ¹

State	Jun 2007	May 2008	Jun 2008	Jun 08 as % of ²	
				Jun 2007	May 2008
	<i>Million Pounds</i>	<i>Million Pounds</i>	<i>Million Pounds</i>	<i>Percent</i>	<i>Percent</i>
AL	2.3	2.0	2.1	93	104
AK					
AZ	35.8	36.6	34.0	95	93
AR	4.8	5.0	5.8	123	117
CA	142.2	138.6	135.6	95	98
CO	172.4	197.3	196.1	114	99
DE-MD	3.2	3.0	2.9	91	96
FL	7.1	8.9	8.2	116	92
GA	13.0	12.4	12.5	96	100
HI	0.9	0.9	0.9	103	97
ID	16.6	18.3	20.3	122	111
IL	215.4	241.3	238.3	111	99
IN	118.0	127.9	126.2	107	99
IA	492.8	*564.9	527.3	107	93
KS	573.4	488.5	436.2	76	89
KY	43.5	44.2	42.2	97	96
LA	0.5	0.5	0.5	102	95
MI	45.1	42.8	44.5	99	104
MN	191.4	206.5	205.5	107	99
MS	1.1	1.1	1.2	110	110
MO	119.8	128.0	126.0	105	98
MT	1.2	0.8	0.9	82	114
NE	632.6	631.4	620.5	98	98
NV	0.1	0.1	0.1	139	70
N ENG ³	1.1	1.1	1.1	100	100
NJ	4.3	3.8	3.5	80	92
NM	0.4	0.4	0.4	117	119
NY	2.5	2.8	3.0	121	108
NC	173.8	200.2	186.1	107	93
ND	2.5	2.4	2.0	81	84
OH	22.6	25.6	26.2	116	102
OK	84.4	91.2	88.1	104	97
OR	4.6	4.7	4.8	103	101
PA	103.1	111.3	105.2	102	95
SC	20.7	21.1	20.1	97	95
SD	74.9	75.3	80.3	107	107
TN	14.5	16.1	15.9	110	99
TX	410.1	490.1	457.5	112	93
UT	41.0	41.1	44.4	108	108
VA	38.6	41.4	36.7	95	89
WA	72.6	66.8	64.9	89	97
WV	0.3	0.3	0.3	96	83
WI	122.1	124.9	120.7	99	97
WY	0.4	0.5	0.5	113	98
US	4,027.5	4,222.3	4,049.6	101	96

* Revised.

¹ Includes total beef, veal, pork, lamb, and mutton.

² Percentages based on unrounded data.

³ N ENG includes CT, ME, MA, NH, RI, and VT.

**Commercial Cattle Slaughter: By State and United States,
June 2007 and 2008¹**

State	Number Slaughtered		Total Live Weight		Average Live Weight	
	2007	2008	2007	2008	2007	2008
	<i>1,000 Head</i>	<i>1,000 Head</i>	<i>1,000 Pounds</i>	<i>1,000 Pounds</i>	<i>Pounds</i>	<i>Pounds</i>
AL	0.5	0.6	453	567	973	987
AK						
AZ	44.4	42.4	60,428	58,703	1,365	1,387
AR	0.9	0.8	856	732	985	962
CA	138.8	128.9	176,782	164,653	1,295	1,294
CO	210.0	236.0	262,524	302,612	1,251	1,283
DE-MD	3.6	3.3	4,786	4,255	1,314	1,304
FL						
GA	25.4		22,332		885	
HI	0.9	0.9	1,014	1,066	1,069	1,177
ID	21.2	28.2	25,924	34,504	1,236	1,238
IL						
IN	2.9	3.0	3,038	3,205	1,048	1,056
IA						
KS	723.1	537.9	892,945	676,950	1,235	1,259
KY	1.3	1.2	1,197	1,128	951	939
LA	0.6	0.6	475	455	781	789
MI	52.8	51.3	70,856	69,425	1,348	1,360
MN	60.7	69.4	82,424	94,739	1,365	1,372
MS	0.1	0.1	69	63	807	723
MO	7.0	7.2	8,405	8,423	1,208	1,178
MT	1.4	1.2	1,747	1,363	1,249	1,185
NE	657.1	633.4	834,203	810,642	1,271	1,281
NV	0.1	0.1	108	143	1,092	1,159
N ENG ²	1.1	1.1	1,192	1,214	1,101	1,112
NJ	2.3	2.1	2,822	2,326	1,222	1,100
NM	0.7	0.4	585	457	930	1,076
NY	2.0	2.2	2,318	2,654	1,148	1,203
NC	18.3	19.0	21,366	22,282	1,172	1,176
ND	1.1	1.0	1,259	1,261	1,170	1,227
OH	9.8	9.9	11,479	11,694	1,178	1,194
OK	1.8	2.4	2,042	2,702	1,105	1,116
OR	2.7	3.3	3,123	3,913	1,198	1,241
PA	79.1	81.0	97,084	100,673	1,235	1,253
SC	13.0	13.7	14,884	15,096	1,148	1,107
SD						
TN	2.0	2.2	1,700	1,822	887	849
TX	542.2	603.5	651,899	731,843	1,206	1,216
UT	52.4	56.1	65,345	70,588	1,249	1,261
VA	1.2	0.7	1,247	710	1,022	1,007
WA	91.1	84.0	117,154	105,355	1,290	1,262
WV	0.4	0.3	432	349	1,195	1,133
WI	143.0	138.0	189,911	183,737	1,341	1,344
WY	0.5	0.6	635	728	1,171	1,198
US ³	3,076.5	2,955.5	3,833,514	3,716,859	1,250	1,261

¹ Includes slaughter under Federal inspection and other Commercial slaughter, excludes farm slaughter.

² N ENG includes CT, ME, MA, NH, RI, and VT.

³ States with no data printed are still included in the US total, data not printed to avoid disclosing individual operations. Accumulated totals and percentages based on unrounded data.

**Commercial Calf Slaughter: By State and United States,
June 2007 and 2008 ¹**

State	Number Slaughtered		Total Live Weight		Average Live Weight	
	2007	2008	2007	2008	2007	2008
	<i>1,000 Head</i>	<i>1,000 Head</i>	<i>1,000 Pounds</i>	<i>1,000 Pounds</i>	<i>Pounds</i>	<i>Pounds</i>
AL						
AK						
AZ						
AR						
CA	10.1	15.1	1,255	1,748	125	117
CO						
DE-MD	0.1	0.2	39	49	275	263
FL						
GA	0.1	0.1	56	42	437	457
HI						
ID						
IL	3.1	5.5	1,270	1,295	410	236
IN						
IA						
KS						
KY	0.1		37		497	
LA	0.2	0.3	71	171	467	500
MI	1.8	1.6	753	685	420	431
MN						
MS						
MO						
MT						
NE						
NV						
N ENG ²	0.1	0.1	37	34	261	275
NJ	6.7	4.7	2,947	1,984	438	421
NM		1.4		124		87
NY	11.0	17.2	1,413	1,962	133	118
NC	0.1	0.1	51	62	468	455
ND						
OH	0.1	4.6	27	1,982	354	428
OK						
OR						
PA	14.5	10.7	5,454	4,303	378	403
SC						
SD						
TN	0.1	0.1	29	37	440	473
TX	1.5	1.1	618	482	407	455
UT						
VA	0.1		20		325	
WA						
WV						
WI						
WY						
US ³	61.3	75.4	18,664	19,833	307	266

¹ Includes slaughter under Federal inspection and other Commercial slaughter, excludes farm slaughter.

² N ENG includes CT, ME, MA, NH, RI, and VT.

³ States with no data printed are still included in the US total, data not printed to avoid disclosing individual operations. Accumulated totals and percentages based on unrounded data.

**Commercial Hog Slaughter: By State and United States,
June 2007 and 2008¹**

State	Number Slaughtered		Total Live Weight		Average Live Weight	
	2007	2008	2007	2008	2007	2008
	<i>1,000 Head</i>	<i>1,000 Head</i>	<i>1,000 Pounds</i>	<i>1,000 Pounds</i>	<i>Pounds</i>	<i>Pounds</i>
AL	7.5	7.5	3,450	3,261	458	438
AK						
AZ	0.2	0.1	40	36	211	260
AR	14.3	17.9	6,519	8,244	456	461
CA	210.9	213.0	50,244	50,163	238	236
CO	0.6	0.6	159	159	252	256
DE-MD	1.3	1.3	262	290	202	218
FL	6.5	7.8	958	915	148	117
GA	11.2	9.9	2,437	2,321	217	235
HI	1.9	1.7	395	361	207	217
ID	13.7	11.3	3,453	2,823	252	250
IL	722.2	835.2	201,553	229,021	279	274
IN	591.2	632.9	153,592	164,029	260	259
IA	2,241.5	2,444.7	600,380	650,554	268	266
KS	18.8		8,736		466	
KY	216.5		56,734		263	
LA	1.1	1.0	215	192	194	186
MI	10.4	11.1	3,643	4,090	351	368
MN	750.3	786.7	193,875	203,657	259	259
MS		5.6		1,688		300
MO	558.3	597.7	151,856	160,647	272	269
MT	0.9	0.7	218	172	242	248
NE	560.0	593.1	149,874	156,758	268	265
NV						
N ENG ²	1.7	1.7	315	342	189	206
NJ	9.6	8.9	946	861	99	97
NM	0.1	0.1	12	22	234	257
NY	2.5	2.8	408	513	161	186
NC	847.6	925.4	216,336	232,521	255	251
ND	10.9	7.9	2,687	1,976	248	250
OH	83.2	93.2	22,367	25,439	269	274
OK	410.4	417.1	109,732	114,563	267	275
OR	16.5	14.3	3,814	3,503	232	248
PA	223.4	233.8	55,770	58,234	250	249
SC						
SD	351.4	372.7	89,112	94,825	254	255
TN	42.0	46.2	20,107	22,105	479	479
TX	30.7	35.3	6,810	8,357	222	237
UT	5.0	6.6	1,026	1,231	203	187
VA	194.4	184.3	50,305	47,891	259	260
WA	2.1	2.8	416	510	198	182
WV	0.5	0.5	116	120	245	235
WI	49.6	58.0	22,516	26,313	459	462
WY	0.2	0.2	64	66	260	267
US ³	8,297.2	8,884.7	2,210,482	2,358,949	267	266

¹ Includes slaughter under Federal inspection and other Commercial slaughter, excludes farm slaughter.

² N ENG includes CT, ME, MA, NH, RI, and VT.

³ States with no data printed are still included in the US total, data not printed to avoid disclosing individual operations. Accumulated totals and percentages based on unrounded data.

**Commercial Sheep and Lamb Slaughter: By State and United States,
June 2007 and 2008¹**

State	Number Slaughtered		Total Live Weight		Average Live Weight	
	2007	2008	2007	2008	2007	2008
	<i>1,000 Head</i>	<i>1,000 Head</i>	<i>1,000 Pounds</i>	<i>1,000 Pounds</i>	<i>Pounds</i>	<i>Pounds</i>
AL						
AK						
AZ						
AR		0.1		6		111
CA						
CO	79.9	68.7	12,332	10,790	155	157
DE-MD	2.8	3.1	276	294	99	93
FL	0.2	0.2	10	13	66	54
GA	0.3	0.3	38	27	124	89
HI						
ID	0.3	0.7	41	82	121	118
IL						
IN	2.0	2.1	216	227	108	109
IA	24.1	20.3	3,687	2,847	153	140
KS	0.2	0.2	22	22	114	110
KY	1.0	1.1	136	141	134	128
LA	0.2	0.3	17	16	84	63
MI	15.5	15.2	1,967	1,912	128	126
MN	0.3	1.1	31	122	125	116
MS						
MO	0.4	0.4	51	50	119	114
MT	0.2	0.2	17	18	105	111
NE		0.1		11		145
NV	0.1	0.1	8	10	125	132
N ENG ²	2.1	1.9	224	191	105	101
NJ	9.9	11.3	812	985	82	88
NM	0.8	1.5	109	167	139	143
NY	2.9	2.5	238	222	82	87
NC	0.5	0.7	43	48	79	70
ND		0.1		6		106
OH	1.3	1.1	138	115	109	104
OK	0.1	0.1	8	13	109	97
OR	2.3	2.1	303	284	131	134
PA	4.7	4.2	456	416	96	100
SC						
SD	1.2	0.3	146	39	123	124
TN	0.8	1.1	68	77	82	70
TX	3.0	2.8	187	251	62	91
UT	2.6	2.3	371	325	143	140
VA	0.8	1.1	81	101	99	95
WA	0.7	0.5	105	98	142	181
WV		0.3		44		138
WI	0.8	1.0	109	138	131	142
WY		0.1		15		148
US ³	200.6	192.4	27,412	26,279	137	137

¹ Includes slaughter under Federal inspection and other Commercial slaughter, excludes farm slaughter.

² N ENG includes CT, ME, MA, NH, RI, and VT.

³ States with no data printed are still included in the US total, data not printed to avoid disclosing individual operations. Accumulated totals and percentages based on unrounded data.

**Classification of Livestock Slaughtered Under Federal Inspection:
United States**

Item	Jun 2007	May 2008	Jun 2008	Jan - Jun ¹		Jun 2007	May 2008	Jun 2008	Jan - Jun ¹	
	<i>1,000 Head</i>	<i>1,000 Head</i>	<i>1,000 Head</i>	<i>1,000 Head</i>	<i>1,000 Head</i>	<i>Percent of Total</i>	<i>Percent of Total</i>	<i>Percent of Total</i>	<i>Percent of Total</i>	<i>Percent of Total</i>
Class ²										
Cattle										
Steers	1,621	1,654	1,553	8,623	8,693	53.4	53.4	53.3	51.6	51.0
Heifers	927	878	820	5,016	5,087	30.5	28.4	28.2	30.0	29.8
All Cows	438	510	485	2,810	2,979	14.4	16.5	16.7	16.8	17.5
Dairy Cows	174	195	181	1,239	1,260	5.7	6.3	6.2	7.4	7.4
Other Cows	265	315	304	1,572	1,720	8.7	10.2	10.5	9.4	10.1
Bulls	49	53	53	267	290	1.6	1.7	1.8	1.6	1.7
Total ¹	3,035	3,095	2,912	16,716	17,049	100.0	100.0	100.0	100.0	100.0
Calves & Vealers	60	70	74	383	425	100.0	100.0	100.0	100.0	100.0
Hogs										
Barrow & Gilts	7,912	8,646	8,458	49,857	55,024	96.3	96.3	96.1	96.4	96.5
Sows	266	295	305	1,628	1,783	3.2	3.3	3.5	3.1	3.1
Boars	40	39	37	243	235	0.5	0.4	0.4	0.5	0.4
Total ¹	8,218	8,980	8,800	51,727	57,042	100.0	100.0	100.0	100.0	100.0
Sheep										
Mature Sheep	9	11	11	55	60	4.8	5.9	5.9	4.4	5.0
Lambs & Yrlngs	179	*184	170	1,206	1,146	95.2	94.1	94.1	95.6	95.0
Total ¹	188	195	181	1,262	1,205	100.0	100.0	100.0	100.0	100.0
Average Dressed Weight										
	<i>Pounds</i>	<i>Pounds</i>	<i>Pounds</i>	<i>Pounds</i>	<i>Pounds</i>					
Cattle	767	762	770	763	770					
Steers ³	816	814	826	811	823					
Heifers ³	743	744	751	748	760					
All Cows ³	617	609	603	626	619					
Bulls ³	917	902	905	910	894					
Calves & Vealers	183	162	157	195	160					
Hogs	200	201	199	202	202					
Barrow Gilts ⁴	196	197	195	199	199					
Sows ⁴	310	310	310	309	308					
Boars ⁴	216	209	208	213	211					
Sheep	70	74	70	71	71					
Mature Sheep ⁵	69	66	68	67	67					
Lamb & Yrlngs ⁵	70	75	70	71	71					

* Revised.

¹ Total and percentages based on unrounded data.

² Species totals and classification reported by food inspectors, Inspection Operations, FSIS.

³ Included in cattle average dressed weight.

⁴ Included in hog average dressed weight.

⁵ Included in sheep average dressed weight.

**Federally Inspected Slaughter: By Region and United States,
June 2008¹**

Standard Federal Regions	Cattle							Calves
	Total ²	Steers	Heifers	Cows			Bulls	Total
				All	Dairy	Other		
	<i>1,000 Head</i>	<i>1,000 Head</i>	<i>1,000 Head</i>	<i>1,000 Head</i>	<i>1,000 Head</i>	<i>1,000 Head</i>	<i>1,000 Head</i>	<i>1,000 Head</i>
1	0.9	0.4	0.2					0.1
2	4.2	1.2	0.3	2.4	1.9	0.5	0.4	21.9
3	83.7	37.3	8.1	35.9	28.5	7.4	2.5	10.9
4	71.2	1.0	0.4	60.6	10.1	50.5	9.2	0.3
5	339.5	158.7	43.3	127.4	63.0	64.4	10.1	22.7
6	601.8	319.5	183.9	86.6	11.3	75.3	11.8	2.3
7	1,220.7	706.1	445.0	60.6	1.3	59.3	9.0	0.1
8	303.9	184.0	102.3					
9	171.6	94.8	11.6	62.0	47.4	14.7	3.1	14.9
10	114.1	50.0	25.0	34.4	12.5	21.8	4.7	
US ²	2,911.6	1,553.1	820.0	485.3	180.9	304.4	53.2	74.2
	Hogs				Sheep			
	Total ²	Barrows & Gilts	Sows	Boars	Total ²	Mature Sheep	Lambs & Yearlings	
	<i>1,000 Head</i>	<i>1,000 Head</i>	<i>1,000 Head</i>	<i>1,000 Head</i>	<i>1,000 Head</i>	<i>1,000 Head</i>	<i>1,000 Head</i>	
1	1.4	1.3			1.7	0.1	1.6	
2	11.5	11.2	0.1	0.1	13.2	1.4	11.8	
3	418.1	404.6	2.5	11.0	8.5	0.5	8.0	
4	1,256.3	1,189.7	65.1	1.6	3.5	1.2	2.3	
5	2,383.6	2,242.8	137.1	3.7	28.7	3.3	25.4	
6	462.3	435.8	25.8	0.6				
7	3,647.0	3,553.4	73.5	20.1	20.6	0.5	20.1	
8	385.1	384.3	0.8		70.7	1.4	69.2	
9	207.9	207.8						
10	27.3	27.2	0.1		2.5	0.1	2.4	
US ²	8,800.5	8,458.1	305.1	37.3	180.7	10.6	170.1	

¹ States included in regions are as follows: 1- CT, ME, NH, VT, MA, & RI; 2- NY & NJ; 3- DE-MD, PA, WV, & VA; 4- AL, FL, GA, KY, MS, NC, SC, & TN; 5- IL, IN, MI, MN, OH, & WI; 6- AR, LA, NM, OK, & TX; 7- IA, KS, MO, & NE; 8- CO, MT, ND, SD, UT, & WY; 9- AZ, CA, HI & NV; 10- AK, ID, OR, & WA.

² Regions with no data printed are still included in the US and Region total, data not printed to avoid disclosing individual operations. Totals may not add due to rounding.

**Federally Inspected Slaughter: By Region and United States,
January - June 2008 ¹**

Standard Federal Regions	Cattle							Calves
	Total ²	Steers	Heifers	Cows			Bulls	Total
				All	Dairy	Other		
	<i>1,000 Head</i>	<i>1,000 Head</i>	<i>1,000 Head</i>	<i>1,000 Head</i>	<i>1,000 Head</i>	<i>1,000 Head</i>	<i>1,000 Head</i>	<i>1,000 Head</i>
1	5.2	2.3	1.0					1.2
2	27.3	9.2	1.8	14.2	11.9	2.3	2.1	129.5
3	501.3	210.5	49.9	228.3	181.5	46.9	12.6	78.7
4	421.6	7.7	2.6	355.9	69.7	286.2	55.3	1.9
5	2,011.8	881.0	254.3	824.9	421.4	403.5	51.7	103.1
6	3,415.5	1,826.5	1,043.7	476.2	86.2	390.0	69.1	13.6
7	7,238.9	4,050.2	2,758.8	383.2	8.6	374.6	46.7	0.4
8	1,700.2	877.7	708.0					
9	1,059.8	553.7	72.3	416.9	365.2	51.7	16.8	89.6
10	667.7	274.4	194.3	175.5	80.2	95.3	23.6	
US ²	17,049.3	8,693.1	5,086.6	2,979.2	1,259.7	1,719.5	290.3	424.6
	Hogs				Sheep			
	Total ²	Barrows & Gilts	Sows	Boars	Total ²	Mature Sheep	Lambs & Yearlings	
	<i>1,000 Head</i>	<i>1,000 Head</i>	<i>1,000 Head</i>	<i>1,000 Head</i>	<i>1,000 Head</i>	<i>1,000 Head</i>	<i>1,000 Head</i>	
1	6.2	5.9			11.6	0.6	11.0	
2	64.4	62.8	0.9	0.7	83.8	8.2	75.6	
3	2,744.0	2,657.1	14.9	72.0	50.5	2.3	48.2	
4	8,192.5	7,762.6	419.0	10.9	18.2	6.1	12.1	
5	15,102.2	14,302.3	778.9	20.9	182.8	19.1	163.7	
6	2,877.0	2,727.7	142.4	6.9				
7	24,108.0	23,563.5	421.7	122.8	165.2	2.4	162.8	
8	2,503.0	2,498.9	4.0	0.1	515.4	9.6	505.7	
9	1,269.4	1,268.7						
10	175.5	174.8	0.6	0.1	12.7	0.8	11.9	
US ²	57,042.2	55,024.3	1,783.3	234.6	1,205.4	59.9	1,145.5	

¹ States included in regions are as follows: 1- CT, ME, NH, VT, MA, & RI; 2- NY & NJ; 3- DE-MD, PA, WV, & VA; 4- AL, FL, GA, KY, MS, NC, SC, & TN; 5- IL, IN, MI, MN, OH, & WI; 6- AR, LA, NM, OK, & TX; 7- IA, KS, MO, & NE; 8- CO, MT, ND, SD, UT, & WY; 9- AZ, CA, HI & NV; 10- AK, ID, OR, & WA.

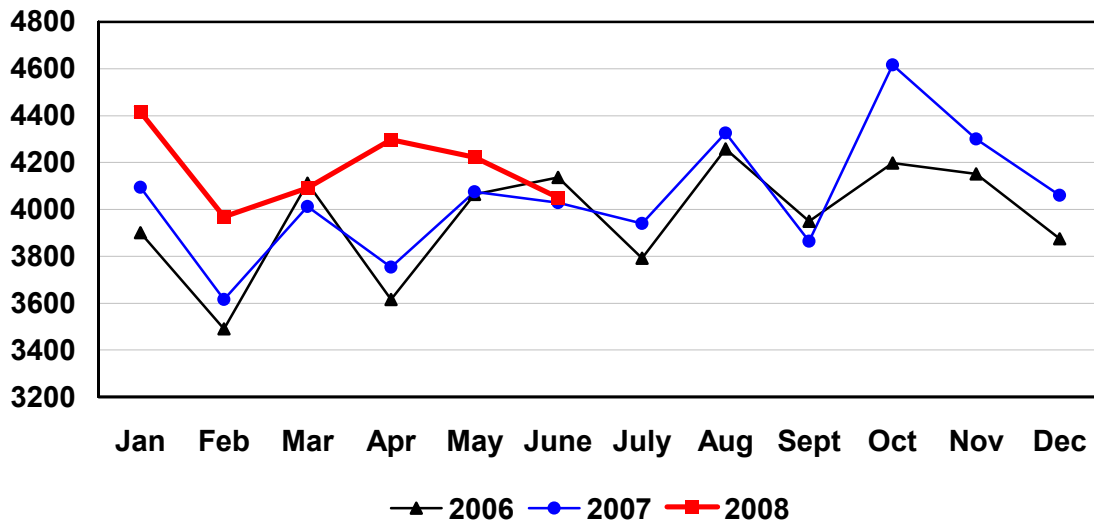
² Regions with no data printed are still included in the US and Region total, data not printed to avoid disclosing individual operations. Totals may not add due to rounding.

Federally Inspected Slaughter: Percent of Total Commercial Slaughter by Species, United States

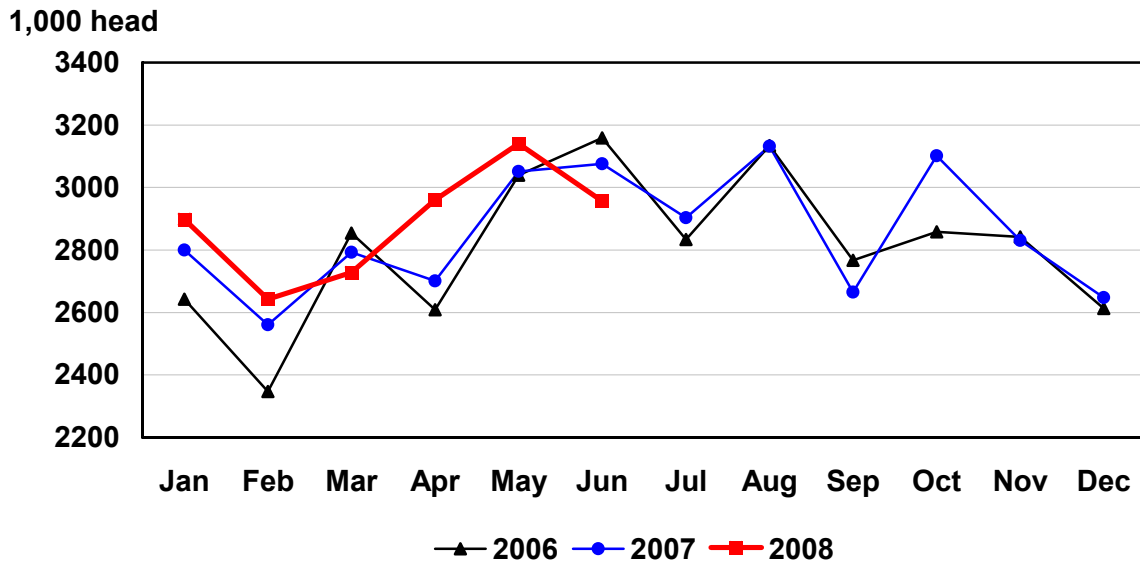
Species	Jun 2007	May 2008	Jun 2008	Jan - Jun	
				2007	2008
	<i>Percent</i>	<i>Percent</i>	<i>Percent</i>	<i>Percent</i>	<i>Percent</i>
Cattle	98.7	98.6	98.5	98.4	98.4
Calves	98.5	98.5	98.5	98.4	98.4
Hogs	99.0	99.1	99.1	99.1	99.1
Sheep	93.9	94.4	93.9	94.5	94.4

U.S. Monthly Commercial Red Meat Production

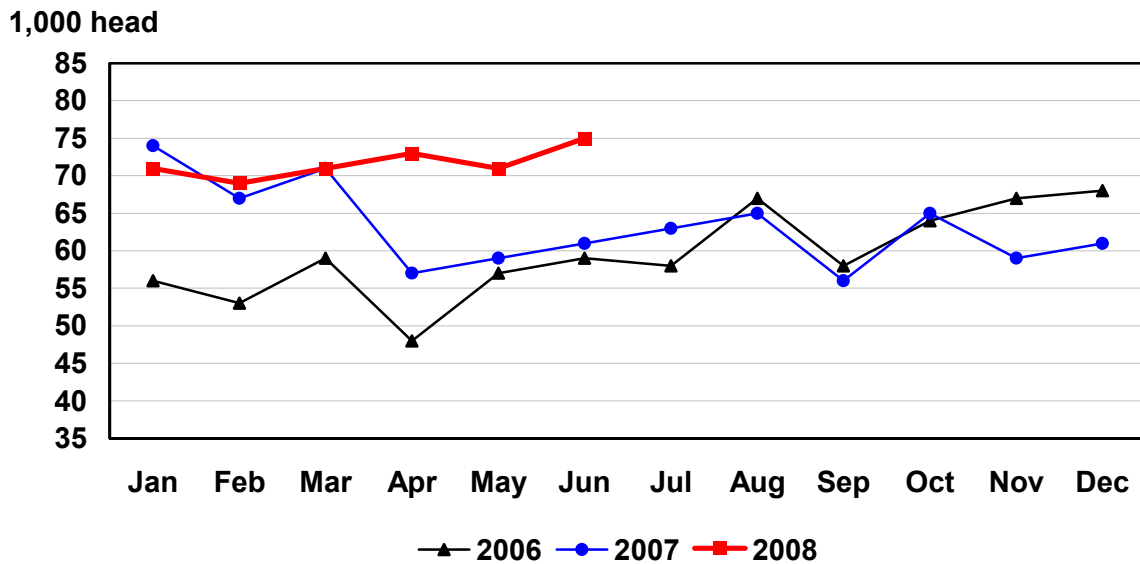
Million Pounds



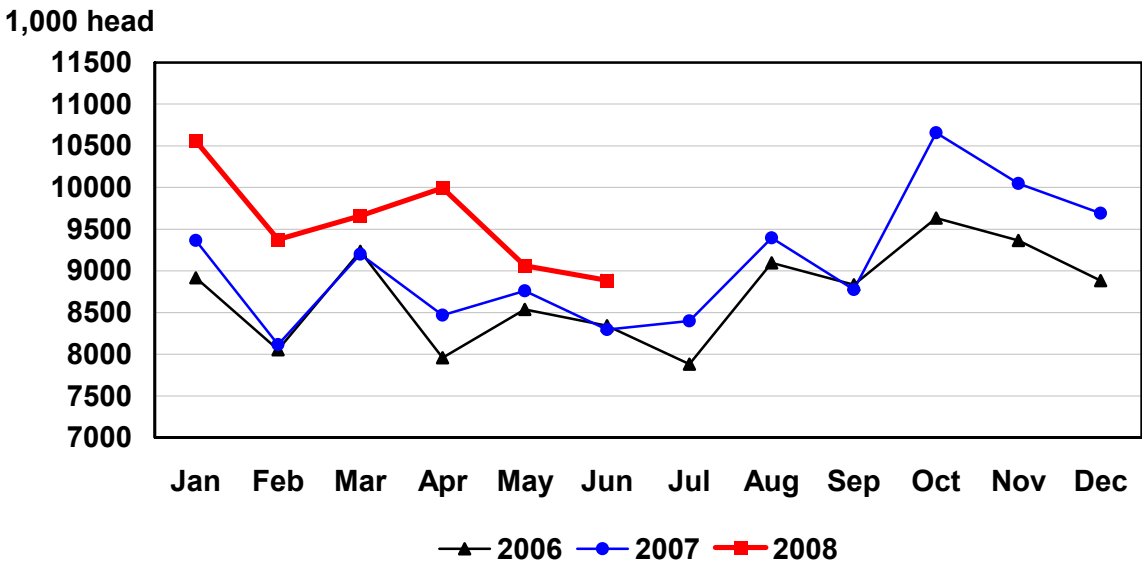
U.S. Monthly Commercial Slaughter Cattle



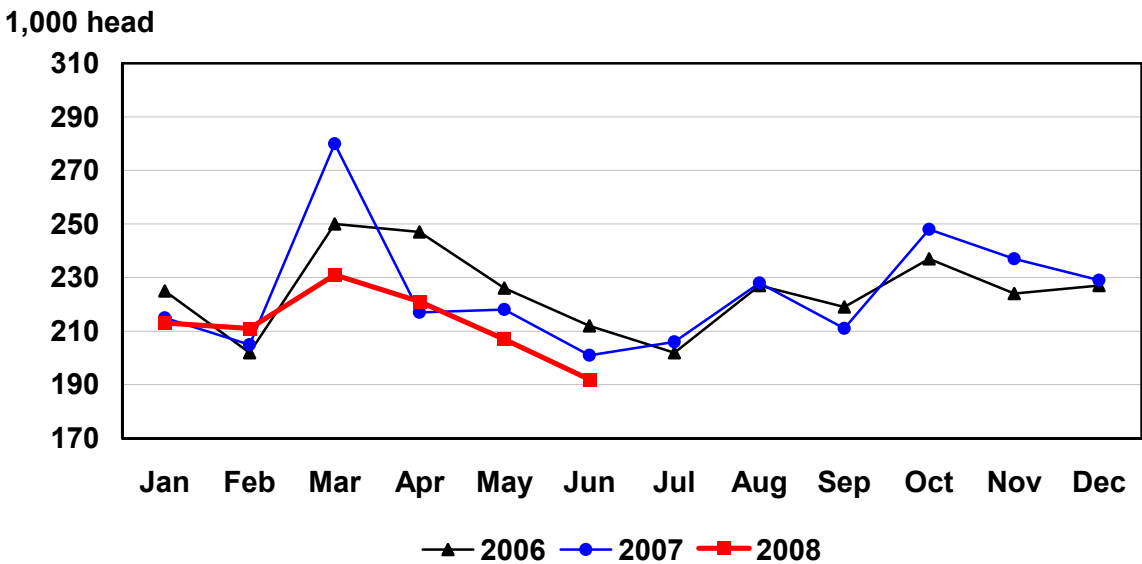
U.S. Monthly Commercial Slaughter Calves



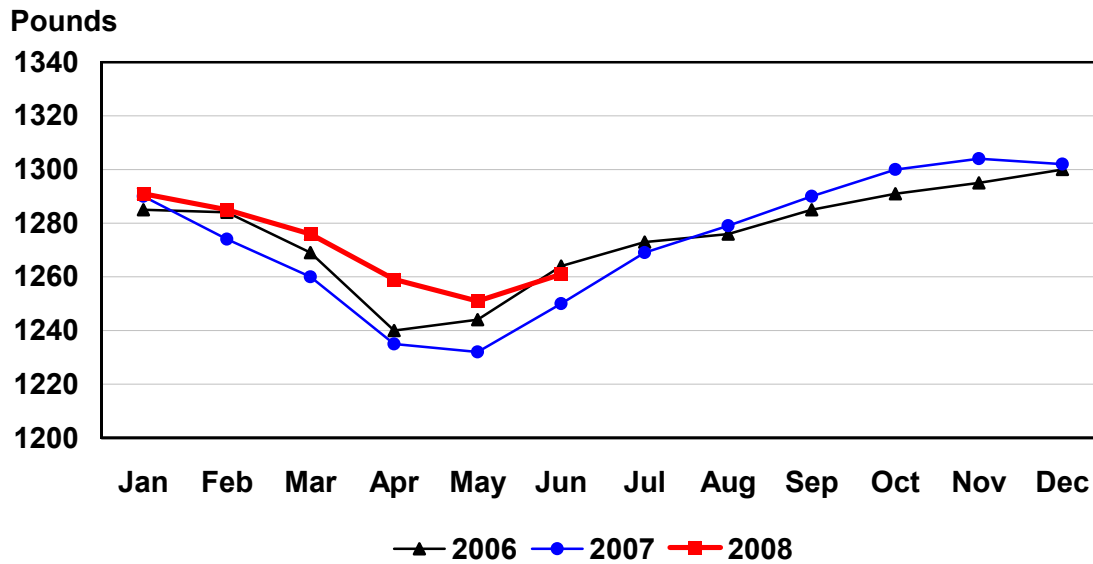
U.S. Monthly Commercial Slaughter Hogs



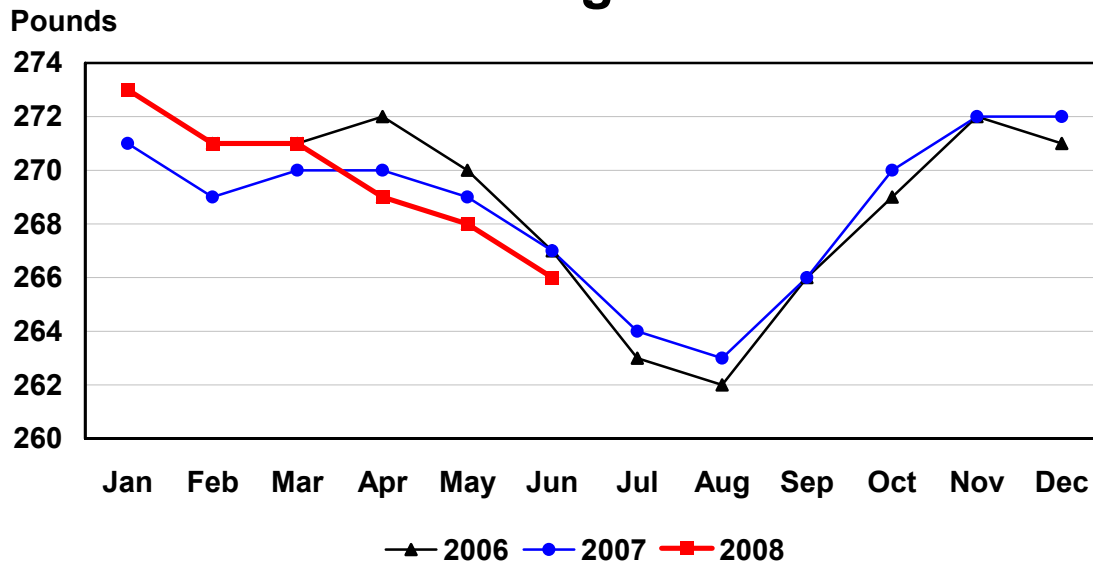
U.S. Monthly Commercial Slaughter Sheep



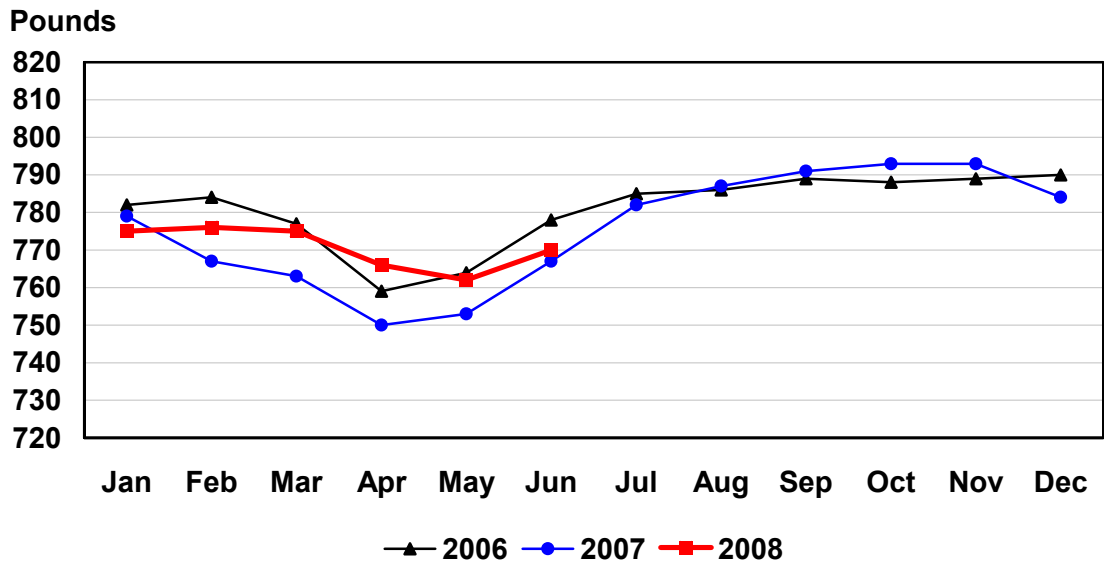
U.S. Monthly Commercial Slaughter Average Live Weight Cattle



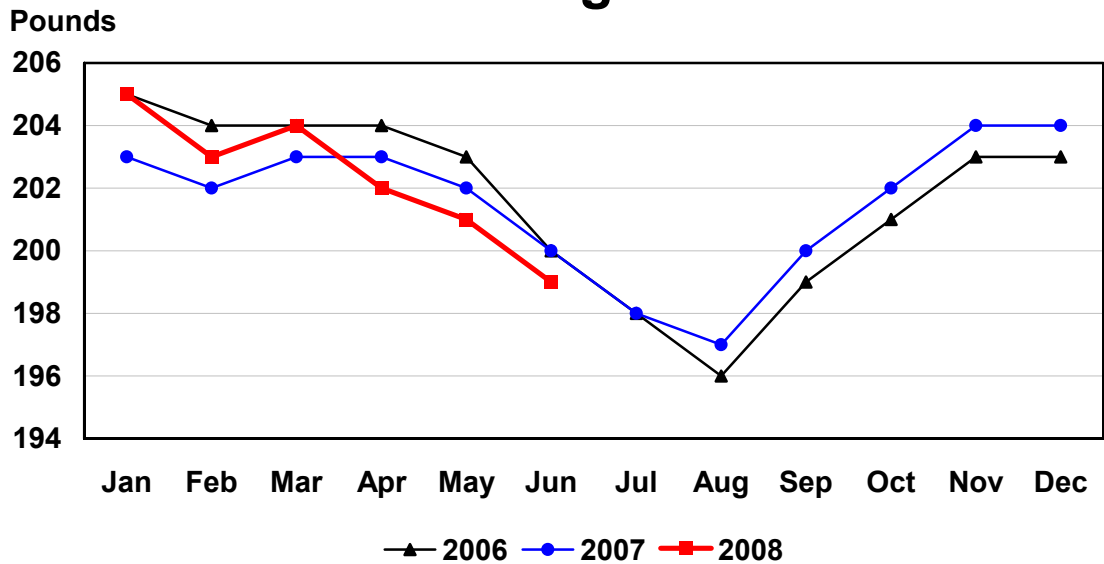
U.S. Monthly Commercial Slaughter Average Live Weight Hogs



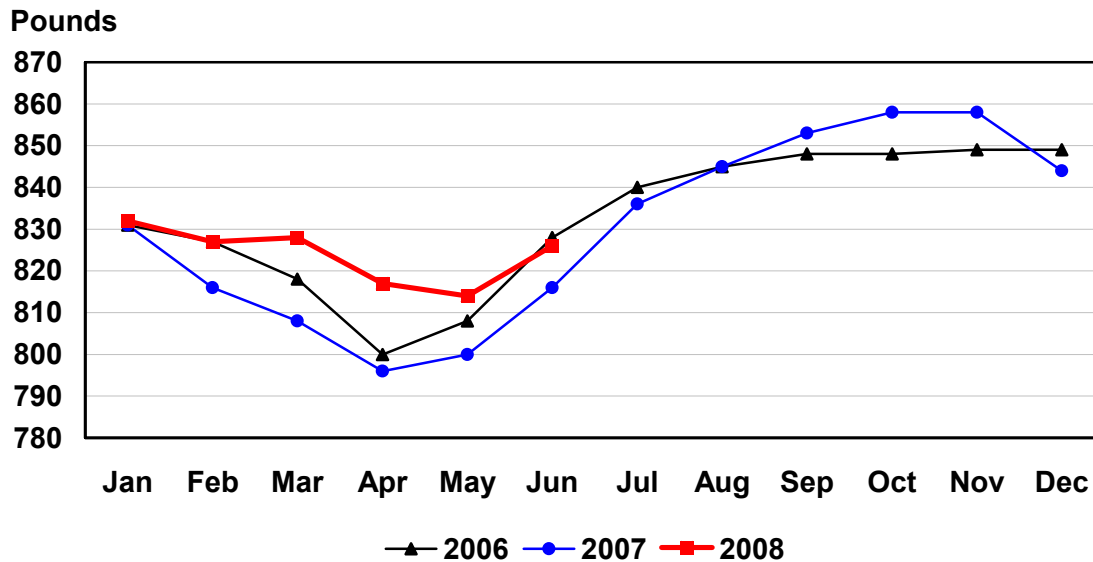
U.S. Monthly Federally Inspected Average Dressed Weight Cattle



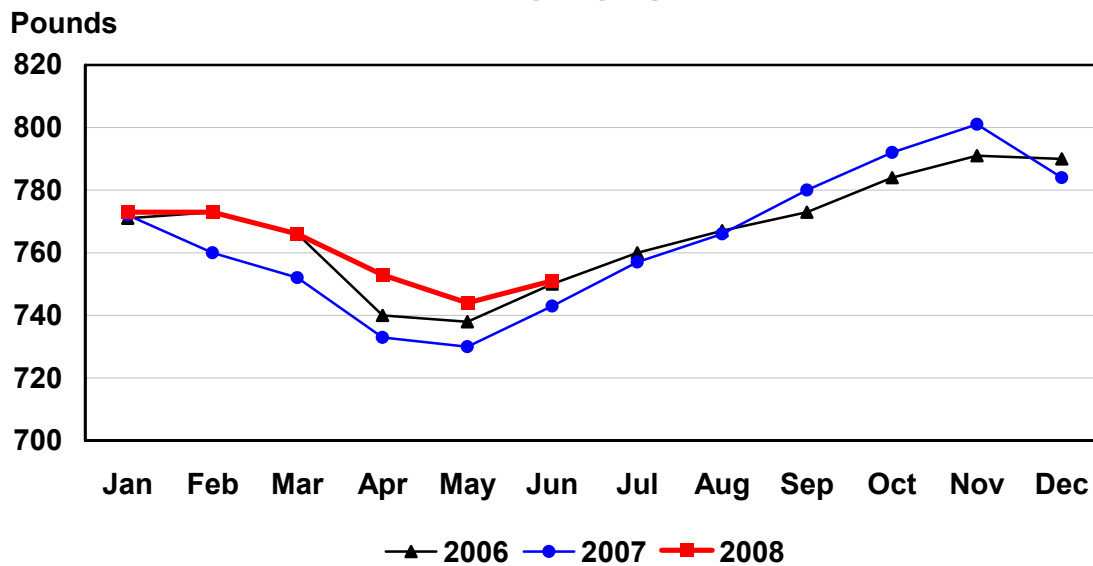
U.S. Monthly Federally Inspected Average Dressed Weight Hogs



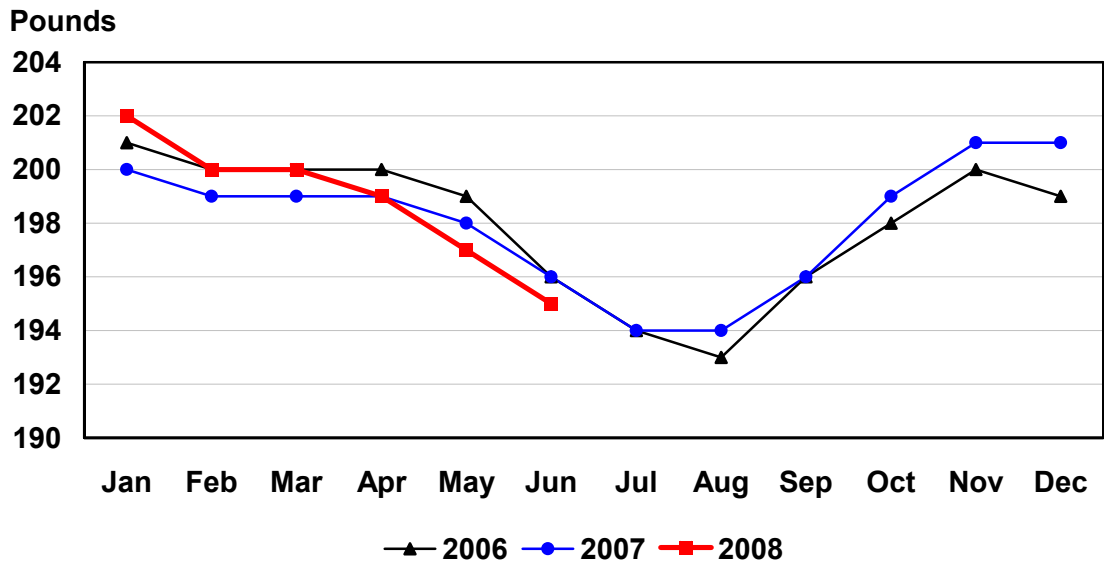
U.S. Monthly Federally Inspected Average Dressed Weight Steers



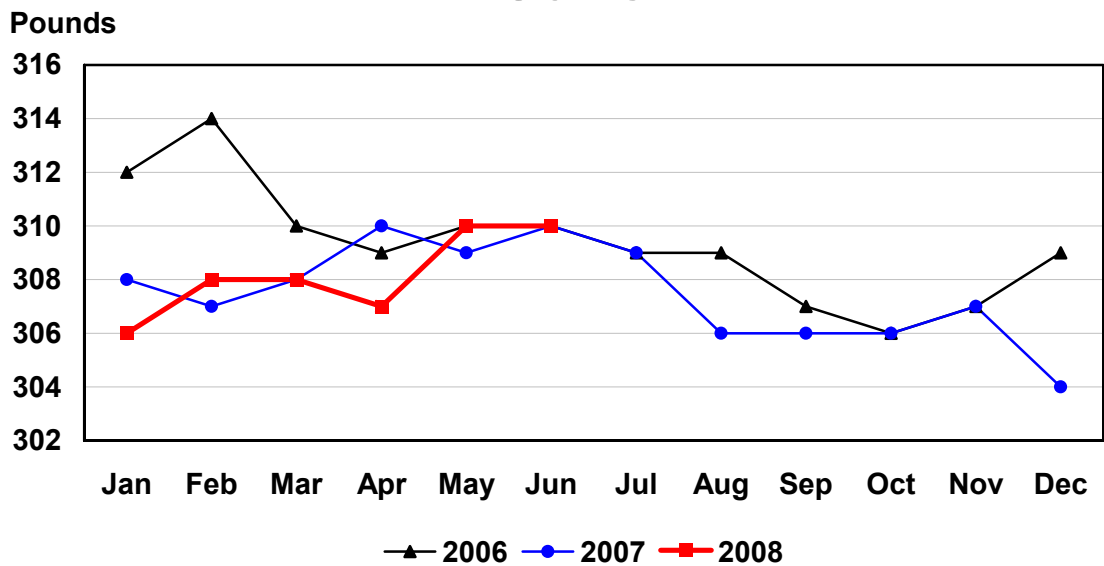
U.S. Monthly Federally Inspected Average Dressed Weight Heifers



U.S. Monthly Federally Inspected Average Dressed Weight Barrows and Gilts



U.S. Monthly Federally Inspected Average Dressed Weight Sows



Reliability of Livestock Slaughter Estimates

Data Sources: Primary data for the commercial livestock slaughter estimates are obtained from electronic reports completed by inspectors from the Food Safety and Inspection Service (FSIS), USDA, which provide daily counts of animals slaughtered in Federally Inspected (FI) plants, in addition to total live and dressed weights. These counts are combined with data from State-administered Non-Federally Inspected (NFI) slaughter plants to derive total commercial slaughter estimates. More than 95 percent of the total U.S. slaughter for any species is under Federal Inspection.

There are nearly 800 livestock slaughter plants in the U.S. operating under Federal Inspection and over 2,000 Non-Federally Inspected (State-inspected or custom-exempt) slaughter plants. Slaughter from State-inspected Talmedge-Aiken plants is included in FI totals (see Types of Plants, page 20). To prevent duplication in reporting between FI and NFI plants and assure all FI plants are included, certificates prepared by FSIS identifying operating status are constantly monitored

Revision Policy: Number of head slaughtered, live weights, and dressed weights are subject to revision the following month after the monthly release. Annual totals are published in the slaughter summary each March which includes any revisions made to current and previous year's published data. Revisions are generally the result of late reports received from slaughter plants and are usually less than one-half of one percent. No revisions will be made to the previous year's data after the publication of the annual summary in March.

Procedures and Reliability: The livestock slaughter data is obtained electronically on a daily basis and summarized approximately two weeks after the week of slaughter. An edit compares each plant's data with the historical data for that plant. Data are checked for unusual values for head kill, patterns of kill, average weights, and dressing percent, based on each plant's past operating profile. In addition, the edit provides a listing of missing reports for follow-up contact with FSIS. Average live and dressed weights and dressing percentages by State are compared with the previous weeks as an additional check. Fluctuations are frequently the result of plants permanently or temporarily closing and a shift in the species reported.

The FSIS District Veterinary Medical Specialists (DVMS) are contacted by e-mail or telephone for missing or potentially erroneous slaughter data. This assures that plants slaughtering a large number of head or several species are accounted for each week. Any corrections FSIS makes to the slaughter data are included in the summary.

Imputation may be necessary for incomplete reports. The imputation of live and dressed weights is based on the current week reported data of plants of similar size and location. Imputation for live and dressed weight data for cattle and hogs is less than 10 percent and 7 percent, respectively. The imputation for calves and sheep is more frequent and variable. If no data is received electronically or by other means, for plants slaughtering fewer than 50 total head weekly of only one species, data are imputed. The imputation of head for any plant is based on the historical data for that particular plant. The imputation of head slaughtered is rare but when necessary, the imputed head kill for missing plants usually is less than 1 percent of the U.S. head kill totals.

FI data are summarized weekly and accumulated to a monthly total for this release. These weekly totals are published by USDA's Agricultural Marketing Service (AMS) in **Livestock, Meat, Wool Market News**, Weekly Summary, and Statistics and are also available on the NASS website. NFI data are summarized monthly only.

Livestock slaughter estimates are based on a census of operating plants and therefore, have no sampling error. However, they may be subject to errors such as omissions, duplications and mistakes in reporting, recording and processing the data. These errors are minimized through rigid quality controls in the edit and summarization process, and a careful review of all reported data for consistency and reasonableness.

No data are published when an individual plant's data could be divulged. If not published, these data are still included in US and region totals. A review of the data is made annually to determine the publishable data.

Types of Livestock Slaughter Plants

There are generally **four types** of slaughtering plants.

- (1) **Federally Inspected (FI) Plants:** Plants that transport meat interstate must employ federal inspectors to assure compliance with USDA standards. Any State whose commercial plants operate entirely under federal inspection may still have custom-exempt establishments for which NFI estimates are made.
- (2) **Talmedge-Aiken (TA) Plants:** Slaughter plants in which USDA is responsible for inspection. However, federal inspection is carried out by State employees. These plants are considered to be federally inspected.
- (3) **Non-Federally Inspected (NFI) Plants:** Plants which sell and transport only intrastate. State inspectors assure compliance with individual State standards for these NFI plants. Mobile slaughtering units are excluded and are considered farm slaughter.
- (4) **Custom-Exempt Plants:** Plants that do not sell meat but operate on a custom basis only are custom-exempt. The animals and meat are not inspected, but the facilities must meet health standards. These are considered NFI plants and head kill is included in NFI totals.

Terms and Definitions Used for Livestock Slaughter Estimates

Average Live Weight: Excludes post-mortem condemnations

Commercial Production: Includes slaughter and meat production in federally inspected and other plants, but excludes animals slaughtered on farms.

Dressed Weight: The weight of a chilled animal carcass. Beef with kidney knob in; veal with hide off; lamb and mutton with pluck out; pork with leaf fat and kidneys out, jowls on and head off.

Dressing Percent: Usually expressed as a percentage yield of chilled carcass in relation to the weight of the live animal on hoof. For example, a live hog that weighed 200 pounds on hoof and yielded a carcass weighing 140 pounds would have a dressing percentage of 70.

Food and Meat Inspection: Includes examination, checking, or testing of a carcass and/or meat against established government standards and involves checking the facility for cleanliness, health of animals, or parts of animals and quality of the meat produced.

Number of Head: Includes post-mortem condemnations.

Plant, Slaughter: An establishment where animals are killed and butchered.

Red Meat: Red meat production is the carcass weight after slaughter excluding condemnation and is comprised of beef, veal, pork, and lamb and mutton. The FI red meat production is equal to the total carcass weight after slaughter. The NFI meat production formula is (NFI head kill) X (live weight) X (FI dressing percentage) = NFI red meat production.

Slaughter: Killing and butchering of animals primarily for food.

Slaughter, Farm: Animals slaughtered on farms primarily for home consumption. Excludes custom slaughter for farmers at commercial establishments, but includes mobile slaughtering on farms. These estimates appear only in the annual slaughter release.

Total Live Weight: Excludes post-mortem condemnations.

Wholesome Meat Act: Legislation that specifies that all meat produced for sale in the U.S. must be inspected. Meat that is transported interstate must be inspected in compliance with Federal (USDA) Standards.

Information Contacts

Listed below are the commodity specialists in the Livestock Branch of the National Agricultural Statistics Service to contact for additional information.

Dan Kerestes, Chief, Livestock Branch.....	(202) 720-3570
Scott Hollis, Head, Livestock Section.....	(202) 690-2424
Jim Collom – Dairy Products.....	(202) 690-3236
Joe Gaynor – Dairy Products Prices.....	(202) 690-2168
Jason Hardegree – Cattle, Cattle on Feed.....	(202) 720-3040
Benita Hodge – Livestock Slaughter.....	(515) 284-4340
Mike Miller – Milk Production and Milk Cows.....	(202) 720-3278
Everett Olbert – Sheep and Goats.....	(202) 720-4751
Nicholas Streff – Hogs and Pigs.....	(202) 720-3106

ACCESS TO REPORTS!!

For your convenience, there are several ways to obtain NASS reports, data products, and services:

INTERNET ACCESS

All NASS reports are available free of charge on the worldwide Internet. For access, connect to the Internet and go to the NASS Home Page at: www.nass.usda.gov.

E-MAIL SUBSCRIPTION

All NASS reports are available by subscription free of charge direct to your e-mail address. Starting with the NASS Home Page at www.nass.usda.gov, under the right navigation, *Receive reports by Email*, click on **National** or **State**. Follow the instructions on the screen.

PRINTED REPORTS OR DATA PRODUCTS

CALL OUR TOLL-FREE ORDER DESK: 800-999-6779 (U.S. and Canada)
Other areas, please call 703-605-6220 FAX: 703-605-6900
(Visa, MasterCard, check, or money order acceptable for payment.)

ASSISTANCE

For **assistance** with general agricultural statistics or further information about NASS or its products or services, contact the **Agricultural Statistics Hotline** at **800-727-9540**, 7:30 a.m. to 4:00 p.m. ET, or e-mail: nass@nass.usda.gov.

The U.S. Department of Agriculture (USDA) prohibits discrimination in all its programs and activities on the basis of race, color, national origin, age, disability, and where applicable, sex, marital status, familial status, parental status, religion, sexual orientation, genetic information, political beliefs, reprisal, or because all or part of an individual's income is derived from any public assistance program. (Not all prohibited bases apply to all programs.) Persons with disabilities who require alternative means for communication of program information (Braille, large print, audiotope, etc.) should contact USDA's TARGET Center at (202) 720-2600 (voice and TDD).

To file a complaint of discrimination, write to USDA, Director, Office of Civil Rights, 1400 Independence Avenue, S.W., Washington, D.C. 20250-9410, or call (800) 795-3272 (voice) or (202) 720-6382 (TDD). USDA is an equal opportunity provider and employer.